

Westside Purple Line Extension Section 1 Project



Westside Purple Line Extension Section 1 Project

QUARTERLY PROJECT STATUS REPORT

THE PREPARATION OF THIS DOCUMENT HAS BEEN FINANCED IN PART THROUGH A GRANT FROM THE U. S. DEPARTMENT OF TRANSPORTATION, FEDERAL TRANSIT ADMINISTRATION (FTA).

June 2019

TABLE OF CONTENTS

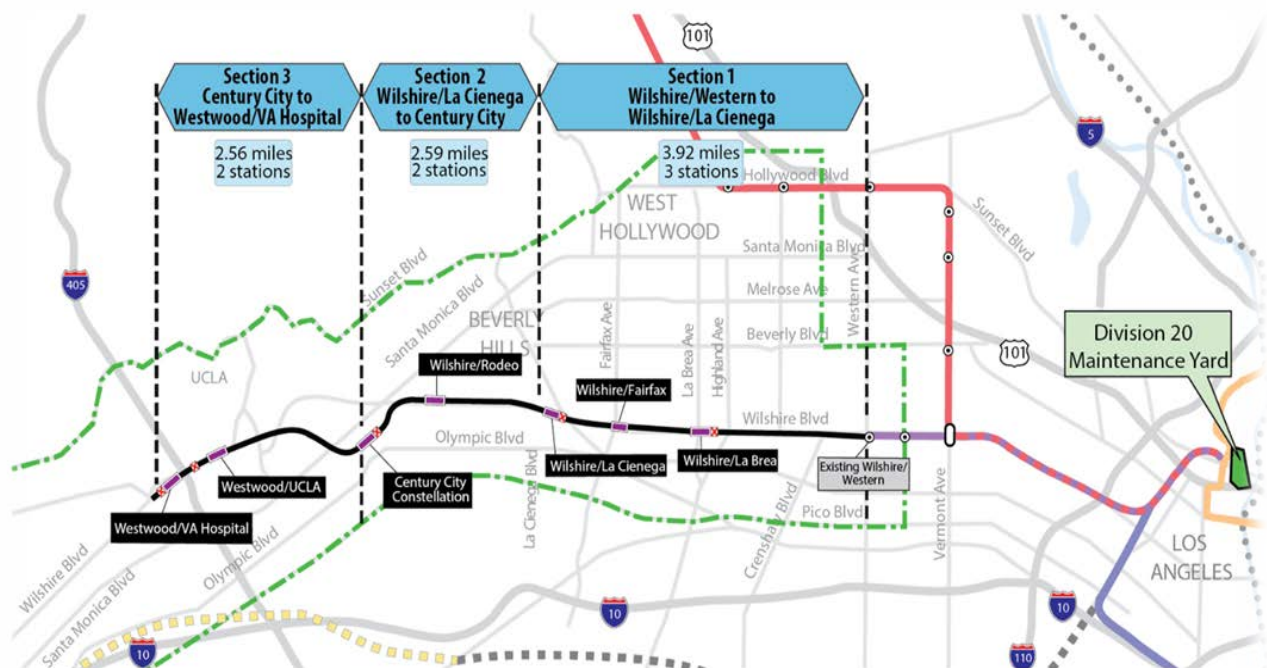
Project Overview.....	1
Executive Summary	6
Project Status	9
Project Schedule.....	9
Project Summary Schedule.....	9
Progress Summary	10
Planned vs. Actual Progress	10
Key Milestones Six-Month Look Ahead.....	11
Major Equipment Delivery	12
Critical Path	13
Project Schedule Contingency Drawdown.....	14
Risk Management Narrative	15
Project Cost.....	16
Project Cost Status & Analysis.....	16
Cost Contingency Drawdown & Analysis	17
Summary of Contract Modifications.....	18
Disadvantaged Business Enterprise (DBE)	19
Project Labor Agreement	20
Financial/Grant	21
Project Staffing	22
Real Estate.....	24
Quality Assurance Report.....	25
Environmental	26
Construction and Community Relations	27
Creative Services	27
Safety and Security.....	28
Appendices.....	29
Chronology of Events	29

PROJECT OVERVIEW

Project Background

Section 1 of the Westside Purple Line Extension Project is the first of three sections to be designed and constructed as part of the Los Angeles County Metropolitan Transportation Authority (LACMTA) Measure R Program. The program was approved by Los Angeles County voters in November 2008 and provides a half-cent sales tax to finance new transportation projects. In April 2012, the three sections of the Project were environmentally cleared and adopted by LACMTA Board of Directors.

Section 1 will extend the existing Purple Line by 3.92 miles beginning at the Wilshire/Western Station. From this station, the twin tunnel alignment will travel westerly within the existing Wilshire Boulevard right-of-way. Stations will be located at the intersections of Wilshire/La Brea, Wilshire/Fairfax, and Wilshire/La Cienega. All three of the station boxes will be located within the Wilshire Boulevard right-of-way with station portals extending to off-street entrances. Two of the stations, Wilshire/La Brea and Wilshire/Fairfax are within the jurisdiction of the City of Los Angeles. The Wilshire/La Cienega Station is within the City of Beverly Hills jurisdiction.



The Wilshire/La Brea Station box will be located under the center of Wilshire Boulevard in between Detroit Street and Orange Drive. A double crossover will be located east of the station box. The station entrance will be on the northwest corner of Wilshire Boulevard and La Brea Avenue.

The Wilshire/Fairfax Station box will be located under the center of Wilshire Boulevard west of Fairfax Avenue to west of Ogden Drive. The station entrance will be on the southeast corner of Wilshire Boulevard and Orange Grove Avenue.

The Wilshire/La Cienega Station box will be located under the center of Wilshire Boulevard immediately east of La Cienega Boulevard. A double crossover will be located east of the station box. The station entrance will be on the northeast corner of Wilshire Boulevard and La Cienega Boulevard. Since the station will be the terminus station for Section 1, tail tracks will be located west of the station box.

Major Procurements

Contract C1034 – Wilshire/Fairfax Exploratory Shaft

Metro constructed an exploratory shaft to observe ground conditions prior to the award of Contract C1045. The location of the exploratory shaft was adjacent to the future Wilshire/Fairfax Station. The construction of the shaft included furnishing and installing monitoring instruments, ventilation, and record and report instrumentation data during the excavation of the shaft. After construction of the shaft, the shaft was maintained for an observation period. Afterwards, the shaft was dismantled, and the site backfilled in a condition acceptable to the property owner. The contract was substantially completed on October 31, 2014.

Contract C1048 – Wilshire/La Brea Advanced Utility Relocations

The work scope of this contract included the relocation of existing LADWP power, water utilities and a sewer line within the construction limits of the Wilshire/La Brea Station. The contractor was responsible for working in streets, procuring materials, and coordinating with the utility owner. The contractor constructed the new facilities in accordance with the utility plans and specifications, provided traffic control, restored streets, and supported utility crews installing cabling and during cut-over of the existing utilities. The contract was substantially completed on October 27, 2014.

Contract C1055 – Wilshire/Fairfax Advanced Utility Relocations

The work scope of this contract included the relocation of existing LADWP power and water utilities within the construction limits of the Wilshire/Fairfax Station. The contractor was responsible for working in streets, procuring materials, and coordinating with the utility owner. The contractor constructed the new facilities in accordance with utility plans and specifications, provided traffic control, restored streets, and supported utility crews installing cabling and during cut-over of the existing utilities. The contract was substantially completed on October 7, 2015.

Contract C1056 – Wilshire/La Cienega Advanced Utility Relocations

The work scope of this contract included the relocation of existing City of Beverly Hills water, storm drain and sewer utilities within the construction limits of the Wilshire/La

Cienega Station. The contractor was responsible for working in streets, procuring materials, and coordinating with the utility owner. The contractor constructed the new facilities in accordance with utility plans and specifications, provided traffic control, restored streets, and supported utility crews during cut-over of the existing utilities. The contract was substantially completed on August 5, 2016.

Contract C1045 – Tunnels, Stations, Trackwork, Systems and Systems Integration Testing

The procurement of this contract utilizes a two-step approach with the submittal of qualification statements through a Request for Qualification (RFQ) process, prequalification of qualified proposers followed by the release of a Request for Proposals (RFP) soliciting technical and price proposals with an option at Metro’s discretion for Best and Final Offers (BAFO).

The Design/Build contract provides for final design and construction of the infrastructure along the 3.92-mile alignment. Contract scope includes demolition and removal of structures and clearing sites to facilitate construction operations. The structures to be constructed include twin bored tunnels, complete with cross-passages and walkways, including all mechanical, electrical and finish work. A retrieval shaft will be constructed to the west of the existing Wilshire/Western Station for extraction of the tunnel boring machines. Three underground stations are to be constructed, two with double-crossovers, and the terminus station to include tail tracks. Each station has a single entrance plaza with stairs, escalators and elevators which meet ADA requirements. The scope of work includes all architectural finishes, mechanical, electrical, systems and equipment including train control, traction power, communications, trackwork and the system tie-in to the existing Metro Purple Line, testing and commissioning.

Contract C1078 – Division 20 Maintenance-of-Way and Non-Revenue Vehicle Building Location 64

The Design/Build contract provided for the final design and construction of a new Maintenance-Of-Way (MOW) stores and Non-Revenue Vehicle (NRV) building at the south end of the existing Division 20 Yard (Location 64). The displacement of the former MOW stores building and NRV facility are due to the future turn-back facility site in the yard. The contract was substantially completed on May 1, 2019.

Metro Furnished Equipment

Metro has procured a contract to provide 34 Heavy Rail Vehicles (HRV) necessary to operate the extension to the Purple Line. An additional contract will be procured for the Universal Fare System (UFS). The scope of the HRV contract includes design, manufacturing, testing and delivery of the vehicles. The scope of the UFS contract will include design, fabrication and installation of equipment at the three stations and system testing.

Program Management

The Westside Purple Line Extension Section 1 Project is being managed under the direction of an Integrated Project Management Office (IPMO). WSP provides engineering and design support services, while the Westside Extension Support Team (WEST) provides construction management support services. An overview of staffing is provided under the Staffing section of this report. The on-site program management team is also supported by Metro Headquarters resources to include, but not limited to, engineering, risk management, environmental, quality management, operations and creative services departments.

Project Schedule and Budget: The Revenue Service Date (RSD) is planned for 2023.

The Original Budget of \$3.2 billion reflects the Board approved Life of Project Budget, July 24, 2014, plus Finance Charges of \$0.4 billion. The Current Budget and Current Forecast remains the same this period at \$3.2 billion. A detailed Life of Project Budget forecast is included under the Budget and Cost Forecast Section of this report.

Funding has been secured from a variety of sources to include:

- Federal Section 5309 New Starts
- Federal Section 5339 Alternative Analysis
- Measure R – TIFIA Loan (Transportation Infrastructure Finance & Innovation Act)
- Measure R 35%
- State STIP RIP
- CMAQ (Congestion Mitigation & Air Quality)
- State Capital Project Loans
- City of Los Angeles

Construction and Community Relations: The Construction and Community Relations team is tasked with promoting the Project and performing public outreach within the community to keep stakeholders informed of construction activities occurring along the Project alignment. To facilitate the communication, community leadership councils have been formed which represent geographic-based constituent groups along the Project.

The Project is also engaged in social media outreach and various marketing and advertising efforts designed keep the public informed and excited about the Project. These efforts are aimed at promoting businesses that are affected by construction. An overview of monthly activities is presented in the Construction and Community Relations section of this report.

Start Up: The commencement of pre-revenue operations will be determined by Metro. Generally, all systems integration testing will have been completed and passed. All testing will be required to include and pass a “stress test” of maximum operational service levels to be acceptable. Pre-Revenue Operations include train runs, especially those involving multiple trains, on the integrated and fully operational extension; rehearsal of expected revenue operations scenarios; as well as abnormal and emergency scenarios in which random combinations of system interactions are tested; equipment “burned-in”; and training of Metro personnel who will eventually operate and maintain the extension and for emergency services personnel. Activities occurring during Pre-Revenue Operations are carried out by a designated Metro Project Rail Activation Group.

EXECUTIVE SUMMARY

In June, the Project achieved 50.5% completion based on earned value measurements for design and construction. The critical path of the project remains with Wilshire/La Cienega Station excavation and structural concrete activities. Excavation at the Wilshire/La Cienega Station is anticipated to complete in August 2019. The C1045 Design/Build Contract is on schedule to complete by the June 15, 2023, contract completion date, and the forecast Revenue Service Date (RSD) for the Project remains targeted for 2023.

Design Status

The C1045 Contractor, Skanska, Traylor and Shea (STS), and their final design team, Parsons Transportation Group (PTG), completed final design in June 2017.

The Engineering Management Services (EMS) team continues to provide design support services during construction to the C1045 design/build contract.

Construction Status

On June 11, 2019, TBM #1 (Soyeon) completed Reach One (1) tunnel alignment mining and broke through at the Wilshire/Western TBM retrieval site. On June 27, 2019, TBM #2 (Elsie) arrived at the Wilshire/Western TBM retrieval site completing its Reach One (1) tunnel drive.

Disassembly of both TBMs is on-going at the Wilshire/Western TBM retrieval site. Transport of the TBMs and related mining equipment to the Wilshire/La Brea Station site is scheduled to begin on July 8, 2019. Preparations for Reach One (1) cross passage work is scheduled to begin in October 2019. The Reach Two (2) tunnel drive, which runs from Wilshire/La Brea Station to Wilshire/Fairfax Station, is also scheduled to start in October 2019.

At Wilshire/La Brea Station, HDPE installation for exterior walls above the concourse slab has commenced with follow-on rebar placement scheduled to begin in July 2019. Shoring for exterior walls in the high bay area is also scheduled to commence in July 2019. Preparation for TBM arrivals and relaunch has commenced.

Invert concrete placement at Wilshire/Fairfax Station commenced on June 11, 2019 and is scheduled to complete in early September 2019.

Excavation and the installation of Level D struts continues at Wilshire/La Cienega Station. Daily maintenance of dewatering wells is on-going. The bottom of excavation is anticipated to be reached in August 2019. Maintenance of surface aesthetics per the COBH MOA is ongoing.

The design/build contractor for the Division 20 Maintenance-of-Way and Non-Revenue Vehicle Building Location 64 Contract (C1078) achieved substantial completion on May 1, 2019. Final punch list items continue to be worked on by the contractor. *The process of moving Metro staff into the new building is anticipated to complete in July 2019.*

Cost and Schedule Summary

For the C1045 Design/Build contract, Metro has received the June 2019 schedule update, which reports the substantial completion date finishing 12 calendar days after the June 15, 2023 contractual date. With the current mitigation efforts that have been implemented for excavation at the Wilshire/La Cienega Station, it is anticipated that the contractual completion date will be achieved.

The critical path of the project remains Wilshire/La Cienega Station excavation and structural concrete activities, followed by traction power installation at Wilshire/La Cienega Station, testing and pre-revenue operations. A summary graphic of the critical path is found on Page 13.

Long range schedule planning for the second half of the project through substantial completion of the C1045 has been ongoing. The immediate goal is to incorporate the current construction approach into the monthly schedule update for the following remaining components of work:

- *Phasing between TBM mining, cross passages, tunnel concrete, tunnel/cross passage MEP and track (rail); and follow-on milestones for systems (wayside) access.*
- *Scope of work/sequence associated with station concrete.*
- *Detail MEP schedule for all three stations, including permanent power and systems integrated testing.*
- *Detail appendage schedule for all three stations.*
- *Early systems/tie-in at Wilshire/Western Station.*

Potential schedule impacts are being identified and assessed as this long-range plan continues to be refined.

C1045 Design-Build Contract Schedule Metrics

	Original Contract Date/Duration	Time Extension (CD)	Current Contract Schedule	Forecast (Metro PMS)	Variance CD (Trending)
NTP	01/12/2015				
Substantial Completion	06/9/23	6	06/27/23	06/15/23	-12 days

Project costs continue to track within budget and projected contingency limits. To date, the Current Budget and Current Forecast remains the same this period at \$3.2 billion. There are no claims on the Project. Detailed cost and budget information is provided on Page 16.

Key Management Concerns

No concerns to report at this time.

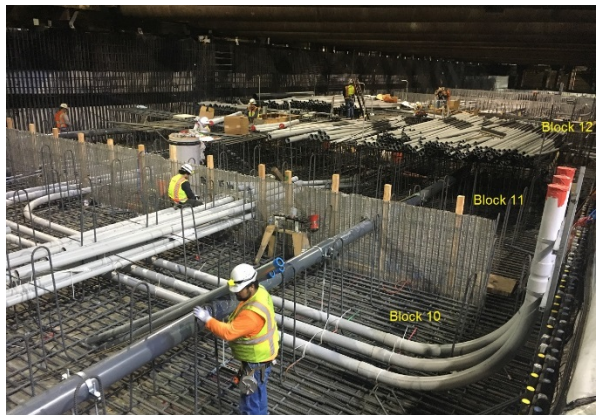
Project Construction Photos



Gantry Crane at Wilshire/Western



Wilshire/La Brea Station Looking West



Conduit Installation at Wilshire/Fairfax Station



Wilshire/La Cienega Station Excavation



TBM Shield at Wilshire/Western

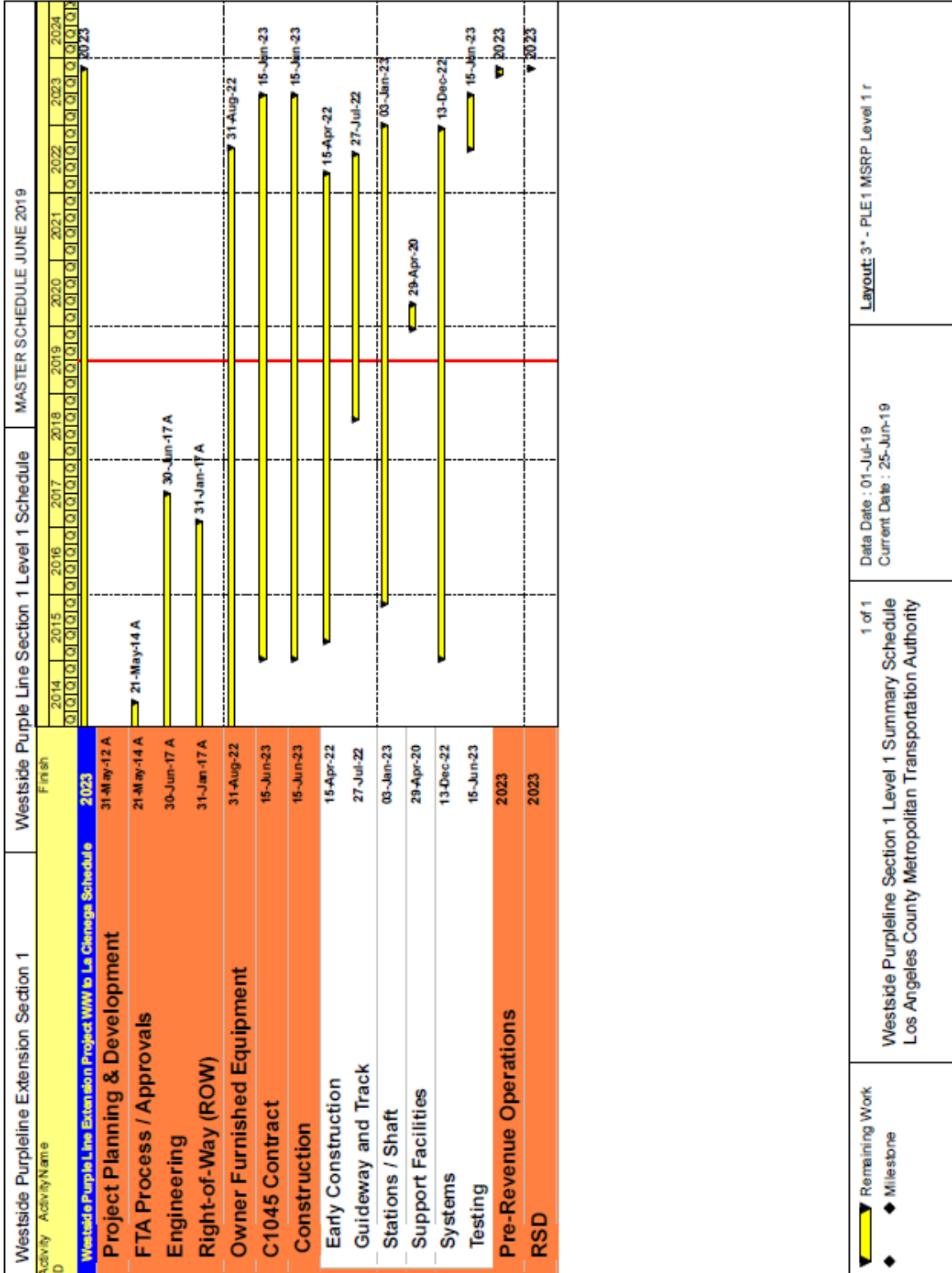


Reach 1 Tunnel at Wilshire/Western

PROJECT STATUS

PROJECT SCHEDULE

Project Summary Schedule

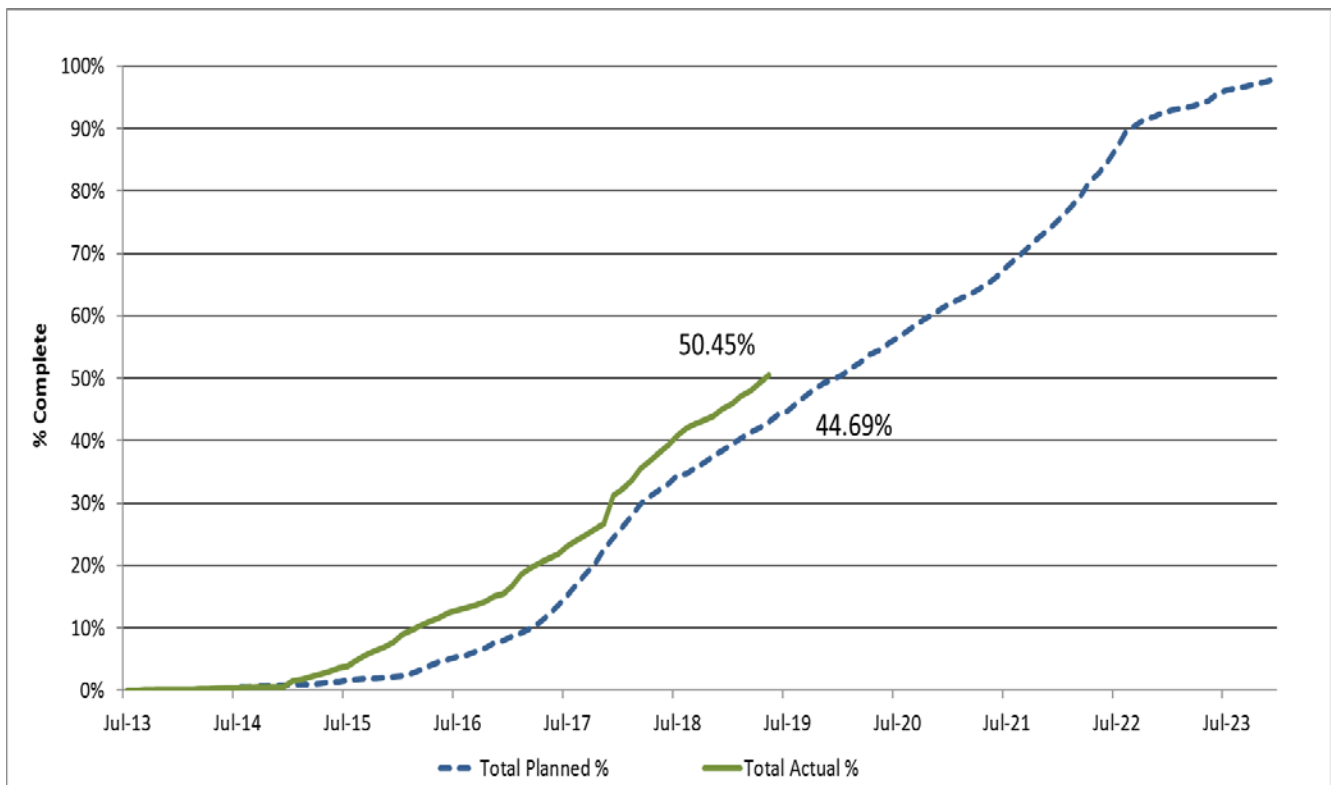


Progress Summary

	Status	Change from Last Period	Comment
Forecast Revenue Service	2023		
TIFIA Revenue Service	10/31/2024	None	
FFGA Revenue Service	10/31/2024	None	
Final Design Progress:			
Contract C1045	100.0%	0%	
Contract C1078	100.0%	0.9%	
Construction Contracts Progress:			
Contract C1048	100.0%	0.0%	Completed on Schedule
Contract C1045	46.9%	1.3%	
Contract C1055	100.0%	0.0%	Completed on Schedule
Contract C1056	100.0%	0.0%	Completed on Schedule
Contract C1078	97.0%	0.7%	Punchlist/Close-out Remain








Note: Physical completion assessment reflects work completed and work in progress.

Planned vs. Actual Progress



Key Milestone Six-Month Look Ahead

	Milestone Date	Jun-19	Jul-19	Aug-19	Sep-19	Oct-19	Nov-19
TBM #1 (Soyeon) Reaches Wilshire/Western Retrieval Shaft	6/11/19 A	⬡					
Wilshire/Fairfax Invert Concrete Placement Commences	6/11/19 A	⬡					
TBM #2 (Elsie) Reaches Wilshire/Western Retrieval Shaft	6/27/19 A	⬡					
Begin Transfer of TBMs from Wilshire/Western to Wilshire/La Brea	07/08/19		⬡				
Reach Bottom of Excavation at Wilshire/La Cienega Station	08/13/19			⬡			
Complete Installation of Geotechnical Instrumentation	08/20/19			⬡			
Begin Work on Roof Concrete Activities at Wilshire/La Brea Station	08/27/19			⬡			
Wilshire/La Brea Rebar Placement on Concourse Exterior Walls Begins	09/06/19				⬡		
Complete Invert Concrete Placement at Wilshire/Fairfax Station	09/09/19				⬡		
TBM #2 (Elsie) Begins Reach #2 Tunnel Drive	10/04/19					⬡	
TBM #1 (Soyeon) Begins Reach #2 Tunnel Drive	10/18/19					⬡	
Commence Reach 1 Cross Passage Work	11/01/19						⬡

 MTA Staff
  MTA Board Action
  FTA (Federal Transit Administration)
  Utility Company
 Other Agencies
  Contractors
  Design Consultant
  D/B Contractor
 "A" following date is actual and completed * New

Major Equipment Delivery

MAJOR EQUIPMENT DELIVERY

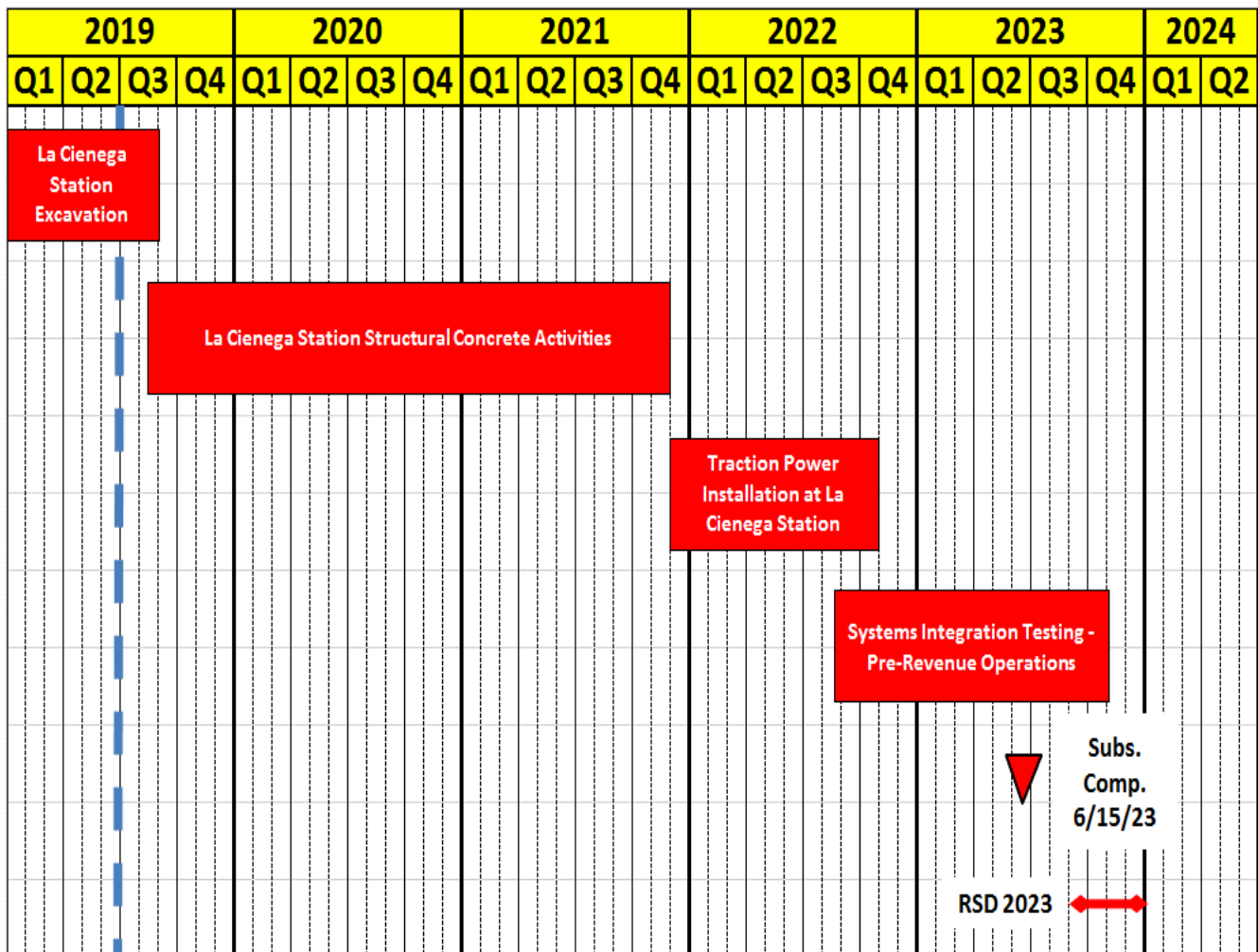
	Submittal	Procurement	Delivery	Installation
C1045 DESIGN/BUILD*				
Tunnel Boring Machine	1/29/16A	8/14/2017A	12/15/17A	7/13/18A
Emergency Ventilation Fans	11/30/18A	4/1/19A	7/19/20	7/20/20
Station Elevators	4/27/18A	4/27/18A	9/6/20	10/21/21
Station Escalators	4/27/18A	9/27/19	11/5/20	10/21/21
Track - Running Rail	9/27/19	11/6/19	7/3/20	4/6/21
Traction Power Equipment	9/25/19	12/9/19	3/31/20	4/13/21
Automatic Train Control	4/1/16A	7/1/16A	12/20/16A	11/24/21
SCADA RTU System	2/2/17A	1/16/18A	5/18/18A	7/16/21
Radio System	2/2/17A	12/9/19	2/4/20	9/7/21
Heavy Rail Vehicles***	7/16/15A	5/1/19A	8/31/22	1/9/23
Universal Fare System***	TBD	TBD	TBD	1/6/22

* Dates derived from STS's June 2019 Updated Schedule.

** Forecast release date by STS to UFS contractor access at stations.

*** Metro supplied equipment

Project Critical Path



For the month of June 2019, the critical path of the project remains with the activities associated with the Wilshire/La Cienega Station excavation and structural concrete placement.

Excavation at the Wilshire/La Cienega Station is anticipated to complete in August 2019.

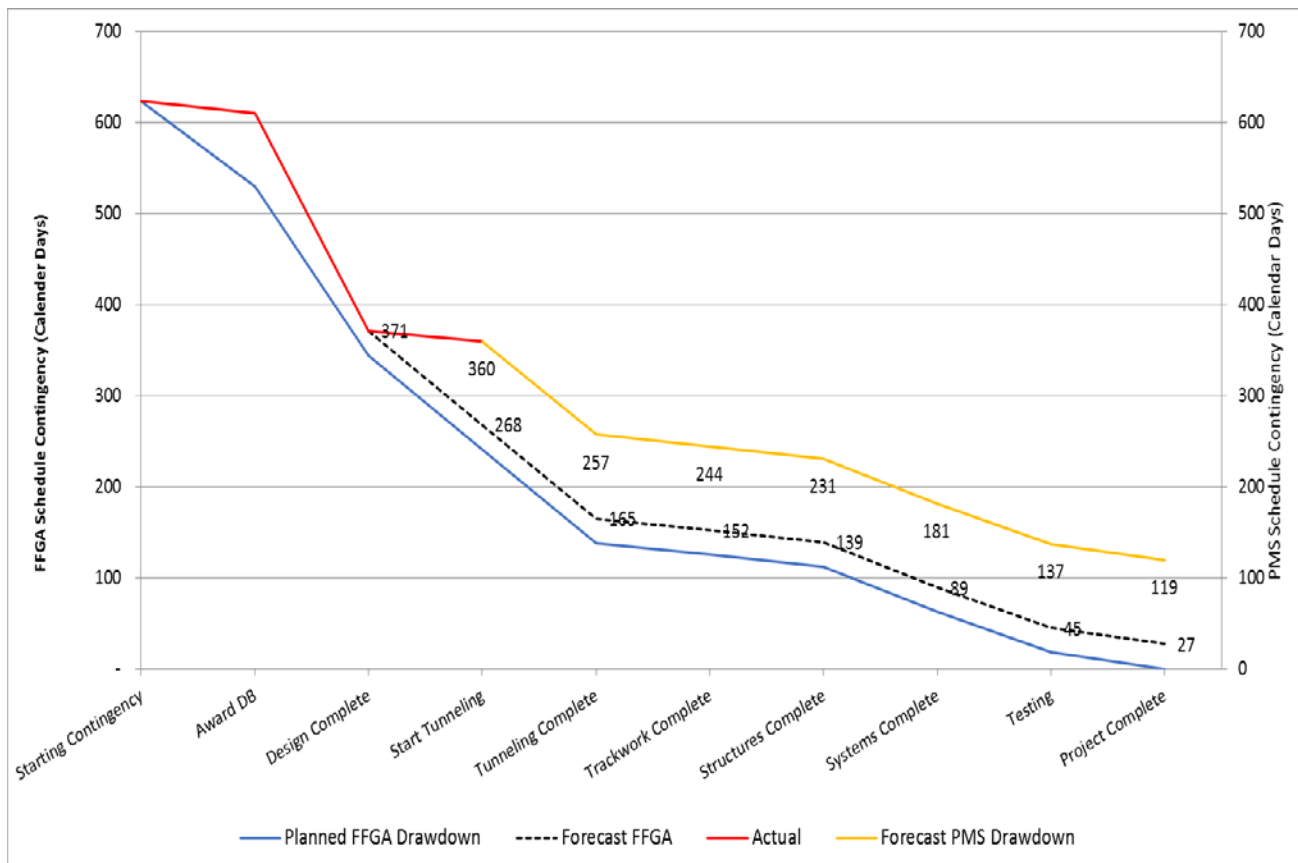
The Revenue Service Date remains in 2023.

Project Schedule Contingency Drawdown Analysis

The project schedule contingency drawdown model provides a dual-axis perspective based upon the FFGA RSD of October 2024 and Metro’s Project Master Schedule (PMS) forecast of fall 2023.

The introduction of the PMS model axis reflects a proportional distribution of available float relative to the FFGA model. Based on an October 15, 2018 actual start of TBM mining, schedule contingency appears to maintain a noticeable buffer from the FFGA model.

With regards to the FFGA RSD, schedule float of twelve (12) months has been maintained.



Risk Management Narrative

Summary of Risks

The WPLE Section 1 Project Risk Register has been updated through April 2019. Within this quarterly reporting period one (1) new risk was identified and two (2) risks were closed, leaving a total of forty (40) risks to be managed in the next reporting period.

Of the forty (40) risks, four (4) are scored as high, nine (9) as medium and twenty-seven (27) as low.

The next WPLE Section 1 Project Risk Register quarterly update is scheduled for July 2019.

Top Five (5) Risks

The table below shows the top five (5) project risks.

Top Risks

Risk ID	Risk Description	Risk Score	Action Items
633.0	Cost of ROW acquisition exceeds the FFGA SCC Line Item.	15	1. Metro's Life of Project Budget includes contingency that covers the increase. The Risk Score will remain as "high" until the \$3.15 billion Life of Project Budget is reconciled with the \$2.82 billion FFGA Budget. 2. FTA has approved the property sale. Escrow on the Gale property has closed. Proceeds from the sale have been reflected in FIS (Financial Information System). 3. Three parcels are in the condemnation phase. 2 settlement proposals have been approved by the MTA Board. Reconciliation remains on going.
675.0	DBE Participation Goal for Construction. Currently targeted at 17%.	13	1. DB Contractor making good faith efforts to meet DBE goals.
676.0	Subcontractor ability to get the required resources to perform work.	13	1. Actively manage schedule and resource needs.
677.0	Resource (Labor) shortage (Direct and Indirect).	13	1. Actively manage schedule and resource needs.
668.1	Gas may travel into adjacent properties or utilities and result in incident.	9	1. Metro has strict safety requirements in place, which are part of the safety requirements for contractors. Metro will further supplement existing safety requirements based on Geotechnical/Environmental investigations. 2. The Gas Task Force has been reassembled. MOD 72 has been issued to conduct additional gas testing and assessment along Reach 3. 3. Pilot well drilling is underway. Testing is anticipated by end of May with the final report expected in July/August.

PROJECT COST

Project Cost Analysis – 865518

DOLLARS IN THOUSANDS

SCC CODE	DESCRIPTION	ORIGINAL BUDGET	CURRENT BUDGET		COMMITMENTS		EXPENDITURES		CURRENT FORECAST		CURRENT BUDGET / FORECAST VARIANCE
			PERIOD	TO DATE	PERIOD	TO DATE	PERIOD	TO DATE	PERIOD	TO DATE	
10	GUIDEWAY & TRACK ELEMENTS	388,294	-	388,294	-	386,598	14,904	207,592	2,540	390,478	2,184
20	STATIONS, STOPS, TERMINALS, INTERMODAL	440,621	-	440,621	16,855	485,365	21,606	195,486	33,260	522,582	81,961
30	SUPPORT FACILITIES: YARDS, SHOPS, ADMIN. BLDGS	43,323	-	43,323	436	42,578	538	42,180	-	43,352	29
40	SITWORK & SPECIAL CONDITIONS	751,566	-	754,491	-	785,937	8,358	573,670	643	815,089	60,599
50	SYSTEMS	113,574	-	113,574	-	101,033	793	28,846	3,361	118,561	4,986
CONSTRUCTION SUBTOTAL (10-50)		1,737,378	-	1,740,303	17,290	1,801,511	46,199	1,047,774	39,805	1,890,062	149,759
60	ROW, LAND, EXISTING IMPROVEMENTS	175,634	-	175,634	-	202,980	530	183,108	-	202,980	27,346
70	VEHICLES	160,196	-	160,196	-	98,118	-	16,061	-	108,302	(51,893)
80	PROFESSIONAL SERVICES	412,710	-	414,785	2,204	379,444	7,347	342,753	612	511,117	96,332
SUBTOTAL (10-80)		2,485,918	-	2,490,918	19,494	2,482,053	54,076	1,589,696	40,417	2,712,461	221,543
90	UNALLOCATED CONTINGENCY	248,592	-	248,592	-	-	-	-	(40,417)	71,454	(177,138)
100	FINANCE CHARGES	375,470	-	375,470	-	-	-	-	-	331,065	(44,405)
TOTAL PROJECTS 465518 & 865518 (10-100)		3,109,980	-	3,114,980	19,494	2,482,053	54,076	1,589,696	-	3,114,980	-
ENVIRONMENTAL/PLANNING - 405518		8,505	-	8,505	-	8,505	-	8,505	-	8,505	-
ENVIRONMENTAL/PLANNING - 465518		30,865	-	30,865	-	30,865	-	30,852	-	30,865	-
TOTAL PROJECTS 405518 & 465518 (ENV / PLAN'G)		39,370	-	39,370	-	39,370	-	39,357	-	39,370	-
TOTAL PROJECTS 405518, 465518 & 865518		3,149,350	-	3,154,350	19,494	2,521,422	54,076	1,629,053	-	3,154,350	-

Original Budget

The Original Budget of \$3.2 billion reflects the Board approved Life of Project Budget, July 24, 2014, plus Finance Charges of \$0.4 billion.

Current Budget

The Current Budget remains the same this period at \$3.2 billion.

Current Forecast

The Current Forecast remains the same this period at \$3.2 billion. However, the Guideway & Trackwork Elements increased by \$2.5 million, the Stations, Stops, Terminals, Intermodal category increased by \$33.3 million, the Sitework and Special Conditions increased by \$0.6 million, the Systems increased by \$3.4 million, and the Professional Services increased by \$0.6 million for anticipated future changes associated with the Design/Build Contract C1045. The \$40.4 million was transferred from the Unallocated Contingency.

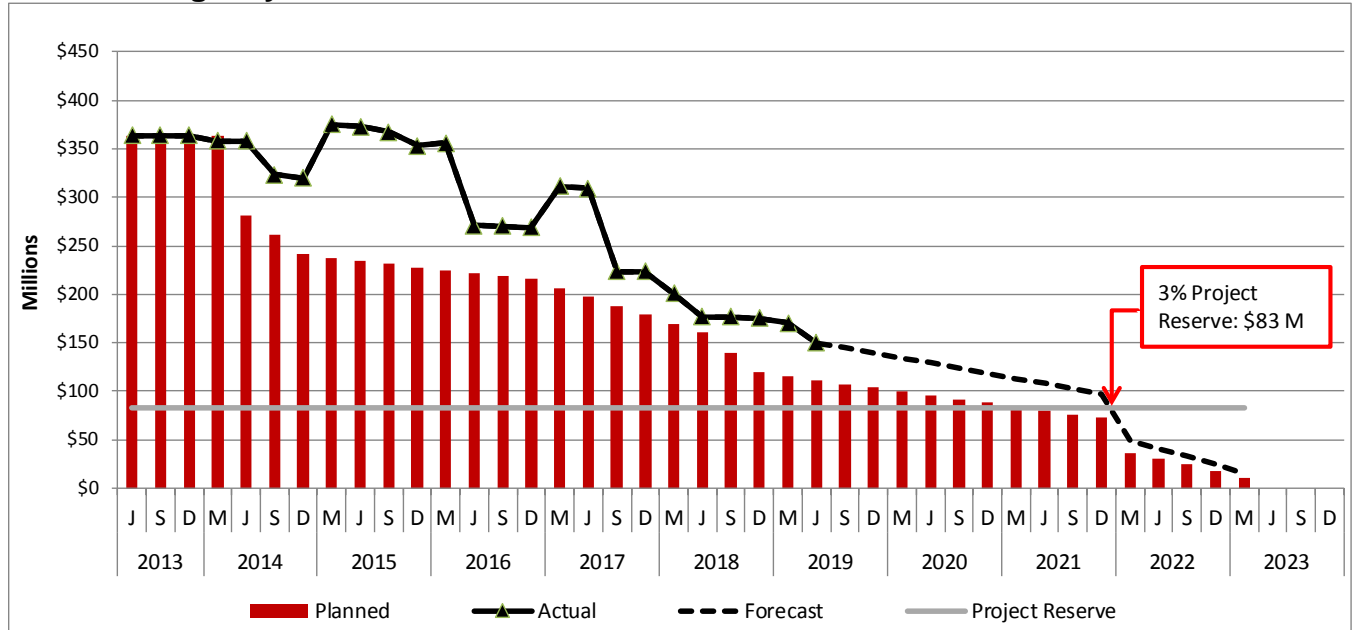
Commitments

The Commitments increased by \$19.5 million primarily due to executed Contract Modifications for the Design/Build Contracts C1045 & C1078. The \$2.5 billion in Commitments to date represent 79.9% of the Current Budget.

Expenditures

The Expenditures increased by \$54.1 million primarily for costs associated with the Design/Build Contracts C1045 & C1078, Third Party Private Utilities, Real Estate Acquisitions, Vehicle Consultants, Engineering Management Support Services, Construction Management Support Services, and Metro Project Administration. The \$1.6 billion in Expenditures to date represent 51.6% of the Current Budget.

Cost Contingency Drawdown



Cost Contingency Drawdown Analysis

The Original Budget of \$3.2 billion (plus Finance Charges of \$0.4 billion) includes a project cost contingency of \$320.6 million or 10.2% of the total project. The project cost contingency of \$320.6 million is based upon the Life of Project (LOP) Budget that was approved by the Board in July 2014. The LOP Budget also included an allocated contingency amount of \$72.0 million. The allocated contingency is an amount to cover anticipated but unknown contract modifications issued by Metro where applicable to specific contracts within each Standard Cost Category (SCC).

Included in the project cost contingency drawdown is a 3% project reserve threshold. Metro’s Board is to be notified when it becomes necessary to drawdown contingency below the project reserve threshold to cover project costs. This was adopted by the Metro Board of Directors in September 2012.

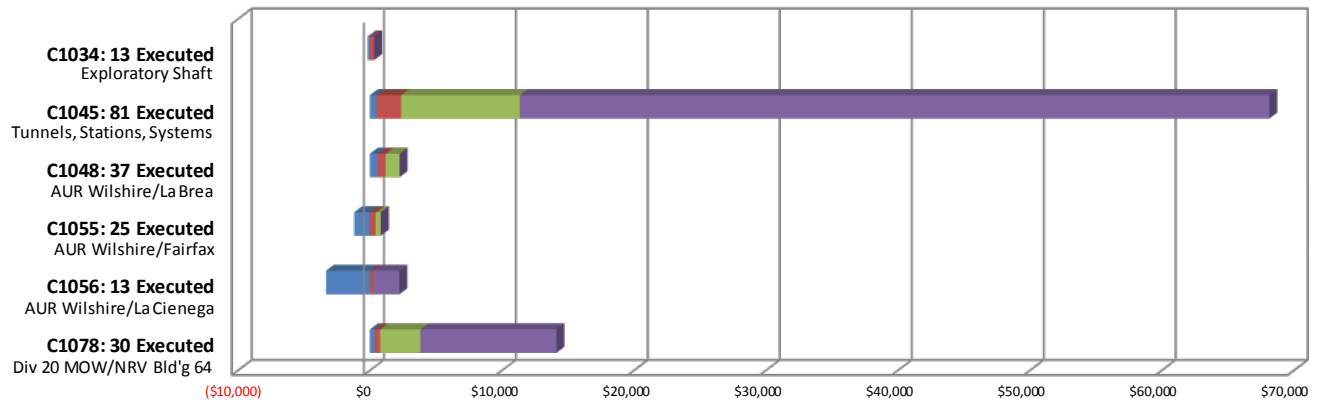
The project cost contingency drawdown curve is based on a 2023 Revenue Service date.

The allocated contingency decreased this period by \$18.0 million due to executed Contract Modifications for the Design/Build Contracts C1045 & C1078.

PROJECT COST CONTINGENCY					
DOLLARS IN THOUSANDS					
	Original Contingency (Budget)	Previous Period	Current Period	To-Date	Remaining Contingency (Forecast)
Unallocated Contingency	248,592	(136,721)	(40,417)	(177,138)	71,454
Allocated Contingency	71,963	(15,670)	22,376	6,705	78,669
Total Contingency	320,555	(152,391)	(18,041)	(170,432)	150,123

Summary of Contract Modifications

Contract Modifications (MODs) by Cost Level
 Dollars in Thousands



	C1034	C1045	C1048	C1055	C1056	C1078	Total
	13 Executed	81 Executed	37 Executed	25 Executed	13 Executed	30 Executed	
Under \$100K	(164)	495	574	(1,179)	(3,325)	353	(3,246)
\$100K to \$250K	321	1,864	617	436	245	424	3,906
\$250K to \$1M	-	8,994	1,051	391	-	3,041	13,477
Over \$1M	-	56,796	-	-	1,983	10,309	69,089
Total Contract MODs	157	68,149	2,242	(352)	(1,097)	14,126	83,226
Contract Award Amount	6,487	1,636,419	6,181	14,430	20,250	52,830	1,736,597
% of Contract MODs	2.4%	4.2%	36.3%	-2.4%	-5.4%	26.7%	4.8%

Percent of Contract MODs equals the Total Contract MODs divided by the Contract Award Amount.

Thirteen Contract MODs with a total value of \$0.2 million have been executed since the award of Contract C1034 – Exploratory Shaft Construction by Innovative Construction Solutions (ICS). The contract has been completed and is closed out.

Eighty-one Contract MODs with a total value of \$68.1 million have been executed since the award of Contract C1045 – Tunnels, Stations, Trackwork, Systems and Systems Integration Testing by Skanska - Traylor - Shea, a Joint Venture.

Thirty-seven Contract MODs with a total value of \$2.2 million have been executed since the award of Contract C1048 – Advanced Utility Relocations at Wilshire/La Brea by Metro Builders & Engineering Group, LTD. The contract has been completed and is closed out.

Twenty-five Contract MODs with a total value of (\$0.4) million have been executed since the award of Contract C1055 – Advanced Utility Relocations at Wilshire/Fairfax by W. A. Rasic Construction Company, Inc. The contract has been completed and is closed out.

Thirteen Contract MODs with a total value of (\$1.1) million have been executed since the award of Contract C1056 – Advanced Utility Relocations at Wilshire/La Cienega by Steve Bubalo Construction Co. The contract has been completed and is closed out.

Thirty Contract MODs with a total value of \$14.1 million have been executed since the award of Contract C1078 – Division 20 Maintenance-of-Way and Non-Revenue Vehicle Building Location 64.

DISADVANTAGED BUSINESS ENTERPRISE (DBE)

(Reported Data as of May 2019)

DBE Goal – Design The percentage of funds apportioned to Design Contracts	20.25%
Current DBE Commitment Design Total DBE Committed Dollars divided by Total Contract Value for Design	\$13.4 M 20.25%
Current DBE Participation Total amount paid to date to DBEs divided by the amount paid to date to Prime:	\$12.5 20.4%

Sixteen (16) Design DBE sub-consultants have been identified to date.

DBE Goal – Construction The percentage of funds apportioned to Construction Contracts	17.00%
Current DBE Commitment Construction Contract commitment divided by current contract value for Construction	\$108.1M 6.86%
Current DBE Participation Total amount paid to date to DBEs divided by the amount paid to date to Prime:	\$115.0M 14.37%

One hundred-nineteen (119) Construction DBE sub-contractors have been identified to date.

PROJECT LABOR AGREEMENTS (PLA)

As of May 2019:

Targeted Worker Goal Construction work to be performed by residents from Economically Disadvantaged Areas in the United States	40.00%
Targeted Worker Current Attainment	63.41%
Apprentice Worker Goal Construction work to be performed by Apprentices	20.00%
Apprentice Worker Current Attainment	17.92%
Disadvantaged Worker Goal Construction work to be performed by disadvantaged workers	10.00%
Disadvantaged Worker Current Attainment	10.68%

FINANCIAL/GRANT

Status of Funds by Source

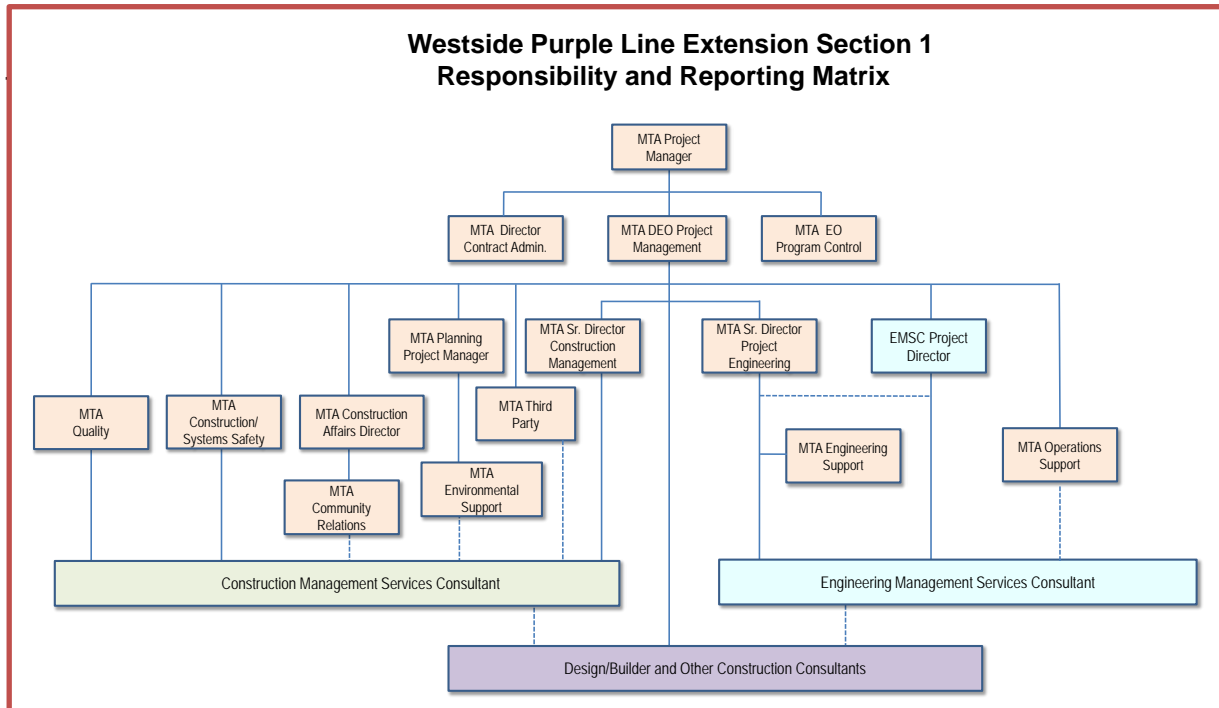
SOURCE	(A)	(B)	(C)	(D)	(D/B)	(E)	(E/B)	(F)	(F/B)
	ORIGINAL BUDGET	TOTAL FUNDS ANTICIPATED	TOTAL FUNDS AVAILABLE	COMMITMENTS \$	%	EXPENDITURES \$	%	BILLED TO FUNDING SOURCE \$	%
FEDERAL - SECTION 5309 NEW STARTS	\$1,250.000	\$1,250.000	\$465.000	\$1,250.000	100%	\$465.000	37%	\$462.994	37%
FEDERAL CMAQ	\$12.171	\$12.171	\$12.171	\$12.171	100%	\$12.171	100%	\$12.171	100%
FEDERAL SECTION 5339 - ALTERNATIVES ANALYSIS	\$0.512	\$0.512	\$0.512	\$0.512	100%	\$0.512	100%	\$0.512	100%
MEASURE R - TIFIA LOAN	\$856.000	\$856.000	\$490.766	\$490.766	57%	\$490.766	57%	\$454.330	53%
MEASURE R 35%	\$869.178	\$874.178	\$700.000	\$680.487	78%	\$573.098	66%	\$502.863	58%
STATE STIP RIP	\$2.568	\$2.568	\$2.568	\$2.568	100%	\$2.568	100%	\$2.568	100%
STATE CAPITAL PROJECT LOANS - OTHERS *	\$83.648	\$83.648	\$83.648	\$83.648	100%	\$83.648	100%	\$52.686	63%
CITY OF LOS ANGELES	\$75.273	\$75.273	\$1.290	\$1.290	2%	\$1.290	2%	\$1.290	2%
TOTAL	\$3,149.350	\$3,154.350	\$1,755.955	\$2,521.442	79.9%	\$1,629.053	51.6%	\$1,489.414	47.2%

EXPENDITURES ARE CUMULATIVE THROUGH JUNE 30, 2019
 ORIGINAL BUDGET BASED ON JULY 2014 BOARD APPROVED LOP BUDGET

* OTHERS INCLUDE TDA ADMINISTRATION (\$4.1M), LTF GENERAL REVENUES (\$1.8M), AND LEASE REVENUES (\$37.8M)

PROJECT ORGANIZATION AND STAFFING

The design-build contract is being managed by a joint team of Metro and consultant personnel jointly located at the Integrated Project Management Office (IPMO).



The overall FY19 Total Staffing Plan averages 108.3 FTEs per month.

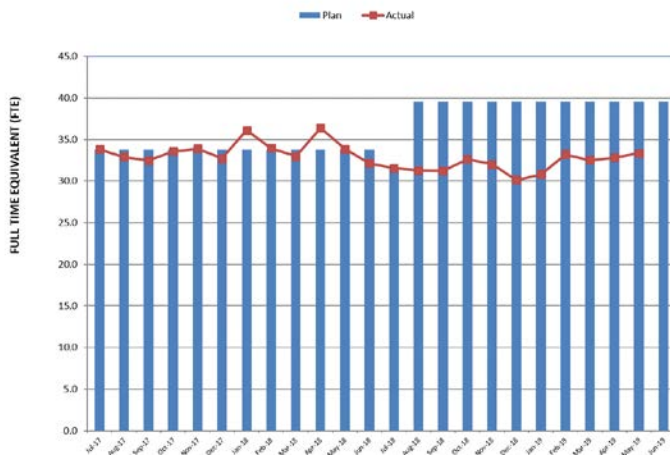
For May 2019, there were a total of 33.3 FTEs for MTA's Project Administration Staff and 73.7 FTEs for Consulting Staff. The total project staffing for May 2019 was 107.0* FTEs.

Total Project Staffing – Metro and Consultants



*Actuals include 3.5 FTEs related to Project Management Support Services (PMSS).

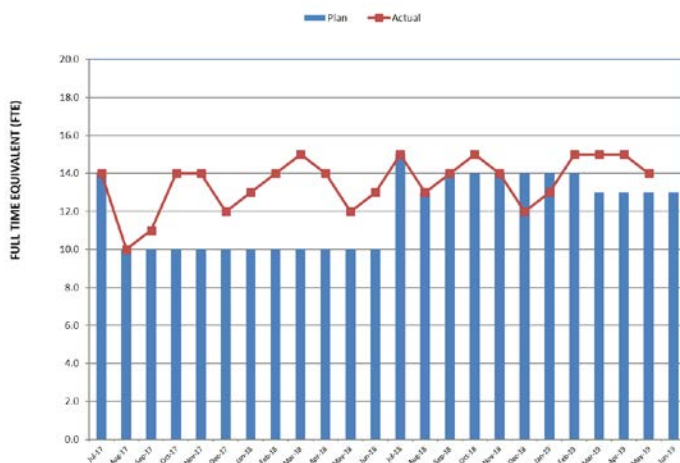
Metro Staff



CM Support Services Staff (Consultant)



Engineering Services Staff (Consultant)



All above data through May 2019

Staffing by Group

The opposing graphs represent planned vs. actual staffing levels by group.

Metro staffing includes full time staff located in the IPMO as well as part-time support located at Gateway Headquarters.

Staffing plans are developed for each fiscal year based on project needs.

REAL ESTATE

Purple Line Extension Section 1 - Real Estate Status Summary								
Description	Number of Parcels	Certified	Appraisals Completed	Offers Made	Agreements/ Settlements Signed	Relocations		Parcels Available
						Required	Completed	
Full Takes	9	9	9	9	9	109	109	9
Part Takes	6	6	6	6	6	0	0	6
TCE	4	4	4	4	3	0	0	4
Total Parcels	19	19	19	19	18	109	109	19

Metro has possession of all the parcels by either acquisition, possession and use agreements or stipulations. The C1045 contractor has possession of all properties along the alignment needed to construct the Project.

There remains one parcel at the Wilshire/Fairfax Station location in the condemnation phase. A Mandatory Settlement Conference has been held, and a tentative settlement is being considered by both parties.

QUALITY ASSURANCE

C1045 – Tunnels, Stations, Trackwork, Systems and Systems Integration Testing

- Reviewed daily inspection reports from the Contractor/Field Technician and CMSSC oversight inspection personnel. Inspections show that the work is predominately compliant.
- Reviewed and provided comments on quality related submittals construction work plan, project specifications, product data and quality manuals.
- Engaged in oversight for the excavation and installation of structural steel members for the Wilshire/La Cienega Station SOE.
- Engaged in Wilshire/Fairfax Station oversight for HDPE and invert base slab.
- *Engaged in Wilshire/La Brea Station in reshoring of previously cast concourse deck.*
- *Processed 30 surveillances, 19 Quality Action Requests and 21 Nonconformance Reports and 1 Corrective Action Request.*

C1078 – Division 20 MOW and NRV Building Location 64

- Contractor in the process of submitting remaining project deliverables such as rebar mill certifications, concrete test data and daily inspection reports.
- *Closeout and completion of punch list items in progress.*
- Processed 2 surveillances, 11 Quality Action Requests (all closed), 17 Nonconformance Reports and 1 Corrective Action Request.

ENVIRONMENTAL

- Ongoing review of noise and vibration levels, including groundborne impacts attributed to TBM operations and additional targeted mitigation measures at Wilshire/La Cienega Station yards.
- Conducted field environmental monitoring and spot inspections for construction noise, vibration, stormwater BMPs, dust and cultural resources for contracts C1045/C1078 and third party work activities.
- Cogstone is continuing laboratory preparation of the backlog of recovered fossil specimens.
- Continuing to evaluate noise impacts during late night ventilation and excavation activities.
- *Cogstone is continuing laboratory preparation of the backlog of recovered fossil specimens.*
- *Reviewed Reach 2 soil conditions (tar-sands) and TBM performance on Reach 1 to prepare for anticipated soil profiles, manifest demand, trucking operations, and landfill capacity.*

CONSTRUCTION AND COMMUNITY RELATIONS

Construction Relations

- *Produced and distributed two construction work notice for construction activities.*
- Produced and distributed weekly construction lookahead emails to construction stakeholders and monthly look ahead for the City of Beverly Hills.
- Held meetings and made Project Presentations at the following: Mid-City West Community Council, Wilshire Center Koreatown Neighborhood Council, Wilshire Center Koreatown Business Improvement District, Elected Officials Briefing, Beverly Hills City Hall, Elected Officials Deputies, Construction Community Meetings and various stakeholders.
- *Held Project Halfway Event to mark halfway construction milestone.*
- Continued additional business mitigations including: alternative parking options, business signage, street signs and print ads at no cost to the businesses.
- Updated website, Facebook, Twitter as needed. Published monthly PLE (Purple Line Extension) newsletter to email list.
- Continued with the “Eat, Shop, Play Spotlight” campaign to advertise and promote businesses that participate in ESP Wilshire and Beverly Hills.

CREATIVE SERVICES

Community Relations

- Continued design development for Wilshire Customer Center artwork relocation to Wilshire/Western Station.
- Continued eight artists’ design development and coordination for eight locations within the stations.
- *Artwork fabrication for the Division 20 Maintenance-of-Way and Non-Revenue Vehicle Building Location 64 Contract (C1078) is 40% complete.*
- *Three artist led community engagements and one SEGD activity at the Project Halfway Event on June 2, 2019.*
- *Continued planning for two artist led community engagement events in July and August 2019 in conjunction with the artist designs for the stations.*

SAFETY & SECURITY

- *There were no recordable injuries during the month of June 2019.*
- *Metro Construction Safety hosted Monthly All Hands Safety Meeting for all Westside-Purple Line Extension Contractors on June 28, 2019.*
- *June 2019 Contractor Work Hours (Design & Construction): 73,402*
- *Contractor - Project to Date Work Hours (Design & Construction) (through 6/30/2019): 3,093,874*
- *Total Project to Date Work Hours (Contractor & the IPO Staff) (through 6/30/2019): 3,685,972*
- Project to Date Recordable Injury Rate: 1.5 (Twenty-one Recordable Injuries) (each rate is per 200,000 work hours) (National Rate: 2.8)
- Project to Date Total Days Away (DART) Injury Rate: 0.8 (130 Days Away From Work Injuries) (National Rate: 1.5)
- Project to Date Total Days Away (DART) Injury Rate: 33.9 (723 Days Away From Work) (No National Rate Published)
- National Rates for Heavy and Civil Construction (NAICS Code 237) are for Calendar Year 2017, published by USBLS in November 2018.

APPENDIX CHRONOLOGY OF EVENTS

June 2007	Began Alternatives Analysis study
January 2009	Board approval of Alternatives Analysis study and next phase
February 2009	Began Draft Environmental Impact Statement / Report (EIS / EIR)
October 2010	Board approval of Draft EIS / EIR and selection of locally preferred alternative
January 2011	FTA approval to enter Preliminary Engineering
May 2011	Began Preliminary Engineering
April 2012	Board certification of Final EIS / EIR and adoption of project
July 2012	Completion of Exploratory Shaft final design
August 2012	FTA Record of Decision
September 2012	Began Real Estate Acquisition
November 2012	Began Final Design - C1048 - Advanced Utility Relocations contract – Wilshire/La Brea
November 2012	Began Final Design - C1055 - Advanced Utility Relocations contract – Wilshire/Fairfax
November 2012	Issued RFQ for C1045 Design / Build contract
December 2012	Began Final Design - C1056 - Advanced Utility Relocations contract – Wilshire/La Cienega
January 2013	Began C1034 Exploratory Shaft construction
February 2013	Received RFQ responses for C1045 Design / Build contract
June 2013	Issued RFP for C1045 Tunnels, Stations, Trackwork, Systems and Systems Integration Testing
June 2013	Beginning of C1055 AUR Wilshire/Fairfax Bid Period
July 2013	Submitted draft FFGA application
July 2013	Completed Final Design - C1048 - Advanced Utility Relocations contract – Wilshire/La Brea

July 2013	Submitted TIFIA loan application
August 2013	Began C1048 Advanced Utility Relocations contract – Wilshire/La Brea
August 2013	NTP for Construction Management Support Services Contract
January 2014	Submitted application to FTA requesting an FFGA
January 2014	Received RFP Proposals for Contract C1045
February 2014	Beginning of C1056 AUR Wilshire/La Cienega Bid Period
May 2014	FTA awarded FFGA
May 2014	Received TIFIA Loan
June 2014	Began C1055 Advanced Utility Relocations at Wilshire/Fairfax
July 2014	Metro Board approved staff recommendation to award Contract C1045 and approved Life-of-Project Budget
September 2014	Issued Invitation to Bid for Contract C1078
October 2014	Issued C1056 Contract Award
November 2014	Issued C1045 Contract Award
January 2015	Issued C1045 Contract Notice to Proceed
January 2015	Issued C1056 Contract Notice to Proceed
February 2015	Received Contract C1078 Bids
August 2015	Issued C1078 Contract Award
September 2015	Issued C1078 Contract Notice to Proceed
October 2015	Contract C1055 achieved Substantial Completion
December 2015	Began piling operations for Wilshire/La Brea Station
June 2016	Began deck beam and decking operations for Wilshire/La Brea Station
August 2016	Began piling operations for Wilshire/Fairfax Station
August 2016	Contract C1056 achieved Substantial Completion
February 2017	Began deck beam and decking operations for Wilshire/Fairfax Station

March 2017	Began piling operations for Wilshire/La Cienega Station
June 2017	Decking operations for Wilshire/Fairfax Station are complete
September 2017	Began utility relocation work at the Wilshire/Western site
October 2017	Began street decking for Wilshire/La Cienega Station
November 2017	Began concreting activities for Wilshire/La Brea Station
December 2017	Structural steel erection commenced at the Division 20 Maintenance-of-Way and Non-Revenue Vehicle Building Location 64
January 2018	Decking operations for Wilshire/La Cienega Station are complete
February 2018	Began invert slab concrete placement at the Wilshire/La Brea Station
April 2018	Wilshire/Fairfax Station excavation cleared the Paleo Zone (Elevation 105')
June 2018	Concrete wall pours needed to support TBM assembly at Wilshire/La Brea Station have been completed
July 2018	Began delivery of TBM components to the Wilshire/La Brea Station site
October 2018	The Reach One (1) mining operation commenced with the launch of TBM #1 from Wilshire/La Brea Station.
November 2018	TBM #2 was launched from Wilshire/La Brea Station.
December 2018	The bottom of excavation was reached at the Wilshire/Western TBM Retrieval site.
January 2019	The temporary concrete slab at the Wilshire/Western TBM Retrieval site was placed.
February 2019	Reached the bottom of excavation at Wilshire/Fairfax Station.
March 2019	Completed mud mad placement at Wilshire/Fairfax Station.
April 2019	HDPE protection slab placement commenced at Wilshire/Fairfax Station.
May 2019	Substantial Completion for the C1078 Contract (Division 20 MOW/NRV Building Location 64) was achieved on May 1, 2019.
June 2019	<i>Both TBM #1 (Soyeon) and TBM #2 (Elsie) completed the Reach One (1) tunnel alignment mining.</i>