

Westside Purple Line Extension Section 3 Project



Metro®

Westside Purple Line Extension Section 3 Project

MONTHLY PROJECT STATUS REPORT

October 2019

TABLE OF CONTENTS

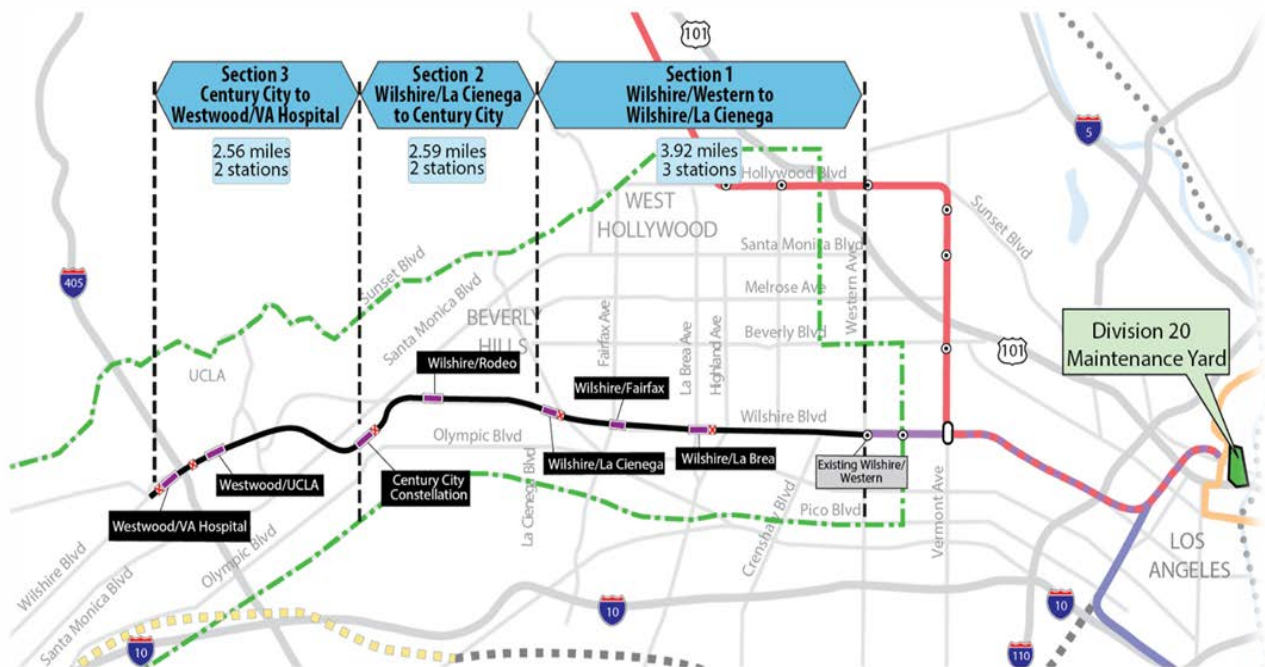
Project Overview.....	1
Executive Summary	5
Project Update	9
Project Schedule	9
Project Summary Schedule	9
Progress Summary.....	10
Planned vs. Actual Progress.....	10
Key Milestones Six-Month Look Ahead	11
Major Equipment Delivery	12
Critical Path	13
Project Schedule Contingency Drawdown	14
Project Cost.....	15
Project Cost Analysis.....	15
Cost Contingency Drawdown and Analysis	16
Risk Management.....	17
Summary of Contract Modifications.....	18
Disadvantaged Business Enterprise (DBE)	19
Project Labor Agreements	19
Financial/Grant.....	20
Project Staffing.....	21
Real Estate	23
Quality Assurance	24
Environmental	25
Construction and Community Relations	26
Creative Services	26
Safety and Security.....	27
Appendix	28
Chronology of Events	27

PROJECT OVERVIEW

Project Background

The Westside Purple Line Extension Section 3 Project (Project) is the third of three sections to be designed and constructed as part of the Los Angeles County Metropolitan Transportation Authority's (Metro) Measure R and Measure M Programs. The Measure R and Measure M Programs were approved by Los Angeles County voters in November 2008 and in November 2016, respectively, and provide in total a one-cent sales tax to finance new transportation projects. In April 2012, the three sections of the Project were environmentally cleared and adopted by Metro Board of Directors.

Section 3 will extend to Westwood from the future Century City Constellation Station that is part of the Westside Purple Line Extension Section 2 Project and currently under construction. The Project is located entirely underground, primarily following Wilshire Boulevard, and includes the design and construction of approximately 2.56 miles of double-track heavy rail, two new stations as well as the purchase of 16 heavy rail vehicles. The Westwood/UCLA Station is within the jurisdiction of the City of Los Angeles, and the Westwood/Veterans Administration (VA) Hospital Station is within the jurisdiction of the unincorporated area of Los Angeles County. The Project also includes train controls, signals, traffic controls, communications, traction power supply and distribution, fare collection systems and equipment, acquisition of right-of-way, and utility relocations.



The Westwood/UCLA Station box will be under Wilshire Boulevard beginning west of Westwood Boulevard and extending to the east of Veteran Avenue. The station will have three entrances, two full entrances on the northside of Wilshire Boulevard and one-half entrance on the southside of Wilshire Boulevard. The two full entrances will be located at Wilshire Boulevard and Gayley Avenue, and at Wilshire and Westwood Boulevards. The half entrance will be located at Wilshire and Westwood Boulevards.

The Westwood/VA Hospital Station box will be under the VA south campus, beginning west of the I-405 Freeway and extending west of Bonsall Avenue. The station will be equipped with double crossovers, one at each end of the station. The station entrance will be south of Wilshire Boulevard and east of Bonsall Avenue.

Major Procurements

Contract C1151 – Tunnels: The procurement of this design/build contract utilized a competitive negotiated procurement process to select a contractor that was determined to have met all the requirements set forth in the Request for Proposals (RFP) with a technically acceptable, “Lowest Evaluated Price” selection process. In June 2018, the Board authorized to award the C1151 Tunnels contract, subject to the FTA approval of the Letter of No Prejudice (LONP). The contract was awarded to Frontier-Kemper/Tutor Perini, JV (FKTP) on November 30, 2018 after receiving the LONP from the FTA. Notice to Proceed (NTP) was issued on January 15, 2019.

The design/build contract provides for final design and construction of the twin bored tunnels, complete with cross-passages, along the 2.56-mile alignment. Contract scope includes demolition and removal of structures and clearing sites to facilitate construction operations. A tunnel boring machine (TBM) launch shaft will be constructed at the westerly end of the Westwood/VA Hospital Station. Upon substantial completion, FKTP will turn over all temporary lighting and ventilation to the follow-on contractor (Contract C1152).

Contract C1152 – Stations, Trackwork, Systems and Systems Integration Testing: The procurement of this design/build contract utilized a two-step approach with the submittal of qualification statements through a Request for Qualification (RFQ) process, prequalification of qualified proposers followed by the release of a Request for Proposals (RFP) soliciting technical and price proposals on a Best Value selection process with an option at Metro’s discretion for Best and Final Offers (BAFO). In February 2019, the Board authorized the CEO to award the C1152 Stations, Trackwork, Systems, and Systems Integration Testing contract to Tutor Perini/O&G, JV (TPOG), subject to the FTA approval of a Full Funding Grant Agreement (FFGA). After the February Board action, FTA issued an LONP on April 18, 2019 that allows contract award to occur prior to receipt of an FFGA. The Board approved award of the C1152 contract at the May 2019 Board Meeting, and the Contract was awarded on May 28, 2019. Notice to Proceed was issued on July 15, 2019 with a commencement date of July 16, 2019.

The Design/Build contract provides for final design and construction of the infrastructure along the 2.56-mile alignment. Contract scope includes demolition and removal of structures and clearing sites to facilitate construction operations. The twin bored tunnels will be complete with walkways including all mechanical, electrical and finished work. Two underground stations are to be constructed, with the Westwood/VA Hospital Station having two double crossovers, one at each end of the station. Each station will be equipped with stairs, escalators, and elevators which meet ADA requirements. The scope of work also includes all architectural finishes, mechanical and electrical systems and equipment including train control, traction power, communications, trackwork, system tie-in at the future Century City Constellation Station, testing and commissioning.

Contract C1153 – Advanced Utility Relocations: The work scope of this firm fixed price contract included the relocation of existing LADWP power and water utilities within the construction limits of the Westwood/UCLA Station. Metro issued Notice of Intent (NOI) to award to Steve Bubalo Construction Company (SBCC) on October 2, 2017 and NTP on January 2, 2018. SBCC was responsible for working in streets, procuring materials, and coordinating with the utility owner. SBCC constructed new facilities in accordance with the utility plans and specifications, provided traffic control, restored streets, and supported utility crews installing cabling and during cut-over of the existing utilities. SBCC achieved contract substantial completion on June 30, 2019.

Metro Furnished Equipment

Metro has procured a contract to provide 16 Heavy Rail Vehicles (HRV) necessary to operate the extension of the Purple Line. The scope of the HRV contract includes design, manufacturing, testing and delivery of the vehicles. An additional contract will be procured for the Universal Fare System (UFS). The scope of the UFS contract will include design, fabrication and installation of equipment at the two new stations and system testing.

Program Management

The Westside Purple Line Extension Section 3 Project is being managed under the direction of an Integrated Project Management Office (IPMO). WSP Global (WSP) provides engineering and design support services, while MPPC Partners, a Joint Venture provides construction management support services. The on-site program management team is also supported by Metro headquarters' resources and includes, but not limited to, engineering, risk management, environmental, quality management, operations, and creative services departments.

Project Schedule and Budget: The Revenue Service Date (RSD) is planned for 2027. In June 2018, the Board authorized to establish the Life of Project (LOP) Budget for the Tunnels portion of the Project. In February 2019, the Board amended the LOP Budget to include the Stations portion of the Project. The LOP Budget for the Westside Purple Line Extension Section 3 Project is \$3.2 billion excluding Finance Charges of \$387.4 million. A

detailed LOP Budget forecast is included under the Budget and Cost Forecast section of this report.

Funding is projected from a variety of sources to include:

- Federal - Section 5309 New Starts
- Federal - CMAQ (Congestion Mitigation & Air Quality)
- Federal - Surface Transportation Block Grant Program
- Measure R 35%
- Measure M 35%
- State STIP RIP
- State Capital Projects Loans
- Local Agency Contributions

Start Up: The commencement of pre-revenue operations will be determined by Metro. Generally, all systems integration testing will have been completed and passed. All testing will be required to include and pass a “stress test” of maximum operational service levels to be acceptable. Pre-Revenue Operations include train runs, especially those involving multiple trains on the integrated and fully operational extension; rehearsal of expected revenue operations scenarios; abnormal and emergency scenarios in which random combinations of system interactions are tested and equipment “burned-in”; and training of emergency services as well as Metro personnel who will operate and maintain the extension. Activities occurring during Pre-Revenue Operations are carried out by a designated Metro Project Rail Activation Group.

EXECUTIVE SUMMARY

In October 2019, the Project achieved approximately 5% completion to-date based on earned value measurements for the overall project. The current focus of the Project is closing out Contract C1153 - Advanced Utility Relocations (AUR), advancing third party utility relocations, and continuing the final design for Contract C1151 (Tunnels) and Contract C1152 (Stations, Trackwork, Systems and Systems Integration Testing).

Contract C1153 achieved substantial completion on June 30, 2019. Contract C1151 has a substantial completion date of November 2022 and demobilize by February 2023. Contract C1152 has a substantial completion date of June 2026 and demobilize by December 2026 in support of Revenue Service in 2027.

The following is an overview of current design and construction activities.

Design Status

- The Engineering Management Services team continues to provide engineering services during construction, real estate support services, supporting Metro in reviewing the C1151 Tunnels and C1152 Stations final design submittals, responding to RFIs, and assisting in the preparation of change notices.
- C1151 – Tunnels Contract:
The design work has been identified into distinct design unit packages:
 - DU 1.1 – Tunnels and Cross Passages
 - DU 1.3 – Westfield Mall Compensation Grouting Access Shaft(s)
 - DU 2.1 – VA Hospital West End Wall
 - DU 2.2 – VA Hospital East End Wall
 - DU 2.3 – UCLA East and West End Walls
 - DU 3.1 – Tail Track Exit Shaft
 - *DU 3.2A – SCE Power Connection within County of LA*
 - *DU 3.2B – SCE Power Connection within City of LA*
 - DU 3.3 – Tail Track Exit Shaft Staging Area
 - *DU 3.3B – Temporary Water and Sewer for Tail Track Exit Shaft Staging Area*

Note: DU 1.2 – Sepulveda Ground Improvement Access Shaft has been suspended due to change in design approach; Contractor to submit Construction Work Plan.

Design unit package will be submitted and evaluated at each of the following phases: 60%, 85%, 100%, Approved for Construction (AFC), and Issued for Construction (IFC).

- 85% design is on-going for DU 1.3
- 95% design is on-going for DU 2.2
- 100% design is on-going for DUs 1.1, 2.1, 2.3, 3.1 (resubmittal), and 3.3 (resubmittal).
- AFC design submittal is on-going for DUs 3.2B, and 3.3B

Deliverables submitted during this reporting period are as follows:

- DU 2.1, 85%
- DU 2.3, 85%
- DU 3.2A, AFC & IFC
- DU 3.3B, 100%

- C1152 – Stations Contract:

Final design for the various design packages is on-going. *Design progress are being discussed and presented at recurring task force meetings for various DUs/APUS and at third party coordination meetings.*

The design work has been identified into distinct design unit packages:

- DU 40: VA Station Temporary Works
 - APDU 41, APDU 42, APDU 43, APDU 44
- DU 50: UCLA Station Temporary Works
 - APDU 51, APDU 52, APDU 53, APDU 54
- DU 60: VA Station
 - APDU 61, DU 60
- DU 70: UCLA Station
- DU 80: Tunnels/Cross Passages, Track & Systems
 - DU 81, DU 82
- DU 90: Tail Track Exit Shaft and Western VA Staging Area

Design unit packages will be submitted and evaluated at each of the following phases:

- DUs - 60%, 85%, 100%, Approved for Construction (AFC), and Issued for Construction (IFC)
- APDUs - OTS, 100%, Approved for Construction (AFC), and Issued for Construction (IFC)

Construction Status

- C1153 – Advanced Utility Relocations:
Substantial completion occurred on June 30, 2019 and the contract is 100% complete. The City of Los Angeles' Bureau of Contract Administration signed-off on all punch list items on July 31, 2019. SBCC completed all punchlist items and submitted 100% billing for all remaining items. SBCC to submit request for Certificate of Final Acceptance and release of retention.
- C1151 – Tunnels Contract:
FKTP continued construction of the SCE duct bank within LA County jurisdiction along Federal Avenue and Wilshire Boulevard. Geotechnical drilling and pre-construction surveys continued along the tunnel alignment.
- C1152 – Stations Contract:
On site meeting between VA Hospital staff, TPOG, & Metro to map and identify redundant mission critical utilities for designing the utility supports needed for the Westwood/VA Hospital Station.

TPOG performed exterior and interior basement level surveys (LiDAR) of 10900 and 10921 Wilshire Boulevard buildings for designing the portal access site for the Westwood/UCLA Station.
- Third Party Utility Relocations:
Joint trench conduit and vault relocations at the Westwood/UCLA Station are in progress. Conduit installation is approximately 70% complete. Most of the vaults have been delivered; the last vault is anticipated to be delivered in November 2019. Vault installation started on September 28, 2019.

Southern California Gas (SCG) relocation at the Westwood/UCLA Station is approximately 55% complete.

LADWP continued pulling and splicing cables and is approximately 52% complete.

Cost and Schedule Summary

The Critical Path (CP) of the Project includes third party utility relocations, C1151's Contractor required utility relocations, followed by both stations' support of excavation, street decking, station structural box excavations, and structural concrete for the stations. Next it flows into installation of the interior finishes and electrical equipment, followed by systems, testing and pre-revenue operations. A summary graphic of the critical path is found on Page 16.

C1151 Tunnels

	Original Contract Dates	Time Extension	Current Contract	Forecast	Variance CDs
Notice to Proceed	01/15/19A	0	01/15/19A		0
Substantial Completion	11/15/22	0	11/15/22	11/15/22	0

C1152 Stations, Trackwork, Systems, and Testing

	Original Contract Dates	Time Extension	Current Contract	Forecast	Variance CDs
Notice to Proceed	7/16/19A	0	7/16/19A		0
Substantial Completion	6/09/26	0	6/09/26	6/09/26	0

C1153 Advanced Utility Relocations

	Original Contract Dates	Time Extension	Current Contract	Forecast	Variance CDs
Notice to Proceed	01/02/18A	0	01/02/18A		0
Substantial Completion	05/07/19	57	06/30/19A		0

Project costs continue to track within budget and projected contingency limits. The Current Budget and Current Forecast remain the same this period at \$3.6 billion. Detailed cost and budget information is provided on Page 18.

Key Management Concerns

No concerns to report at this time.

Project Construction Photos



SCE Duct Bank Trench Excavation Along Wilshire Blvd.



Install Grade Rings and Grout Neck Joints at Electrical Vault VLT-500



Install Manhole 500 for Conduit Line B



Telecom Joint Trench Excavation and Potholing Wilshire Blvd. and Westwood Blvd.

Progress Summary


	Status	Change from Last Period	Comment
Forecast Revenue Service	2027		
FFGA Revenue Service	N/A	N/A	Pending approval of FFGA
Final Design Progress:			
Contract C1151	84%	2%	
Contract C1152	13%	6%	
Construction Contracts Progress:			
Contract C1151	11%	0%	
Contract C1152	0%	0%	
Contract C1153	100%	0%	Substantial Completion occurred on 6/30/19

Planned vs. Actual Progress

To be provided upon C1152 baseline schedule approval.

Key Milestones Six-Month Look Ahead

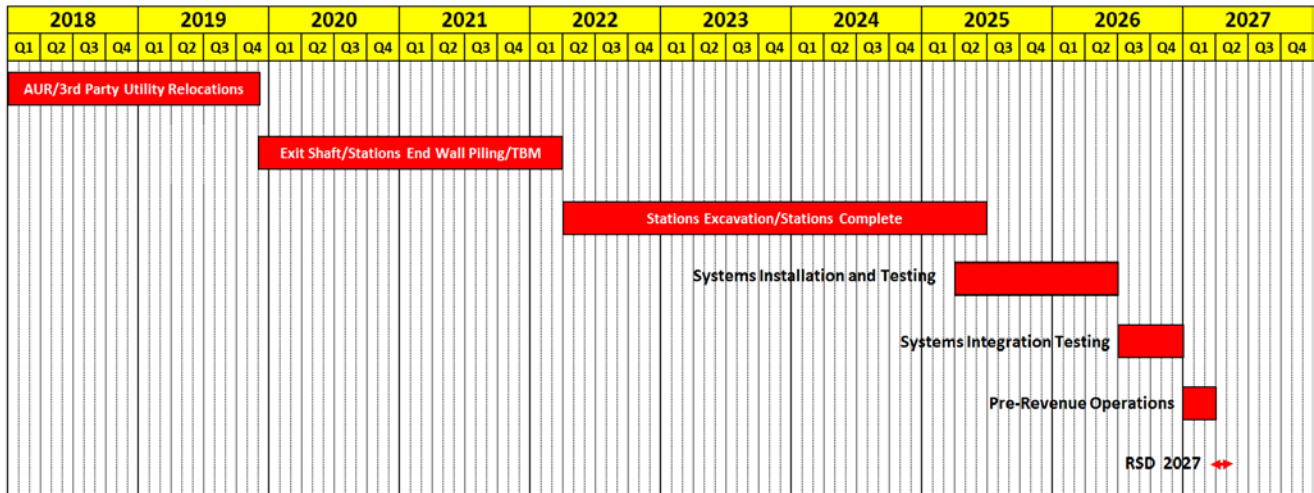
	Milestone Date	Oct-19	Nov-19	Dec-19	Jan-20	Feb-20	Mar-20
C1151 Tunnels Contract - Completed Pre-construction Survey and Crack Monitoring Building	10/18/19A	⬡					
C1152 Station Contract - Submitted Baseline Schedule (UCLA Station Draft Presentation)	10/31/19A	⬡					
C1152 Station Contract - Submit Baseline Schedule (VA Station and Systems Draft Presentation)	11/14/19 & 11/21/19		⬡				
C1151 Tunnels Contract - Submit 100% Design for DU 2.2 VA East Endwall	11/01/19		⬡				
C1151 Tunnels Contract - Submit 100% Design for DU 2.1 VA West Endwall	11/05/19		⬡				
C1151 Tunnels Contract - Submit 85% Design for DU 1.2 Sepulveda Access Shaft	11/28/19		⬡				
C1151 Tunnels Contract - Submit 100% Design for DU 1.1 Tunnels and Cross Passages	11/28/19		⬡				
C1151 Tunnels Contract - Submit 100% Design for DU 2.3 UCLA Endwall	12/11/19			⬡			
Contract C1152 DU60, 60% Design (Structural, Electrical, Fire Protection & Landscape)	12/19/19			⬡			
Contract C1151 VA Tail Track Exit Shaft Staging Area Available (NTP + 260 CDs)	12/02/20			◆			
Contract C1151 Caltrans Staging Area Available (NTP + 370 CDs)	01/20/20				◆		
Contract C1152 UCLA Lot 36 Staging Area (NTP +200 CDs)	01/31/20				◆		
Contract C1152 Submit APDU 41, 100% Wilshire Blvd MOT / SCE Power Connection / VA Sewer / LADPW Water	01/10/20				⬡		
Contract C1152 Submit APDU 44, 100% VA Station SOE in Caltrans R/W	03/16/20						⬡
Contract C1152 Submit APDU 42, 100% VA Station SOE on VA Property	03/23/20						⬡
Contract C1152 Submit DU60, 60% Design (Architecture, Civil, Mechanical, SCE Electrical Connection & Plumbing)	03/23/20						⬡
Contract C1152 Submit DU81, 60% Design Elements	03/26/20						⬡

◆ MTA Staff  MTA Board Action  FTA (Federal Transit Administration)  Other Agencies  Contractor  D/B Contractor

Major Equipment Delivery

To be provided pending submittals from Contracts C1151 and C1152.

Project Critical Path



Project Schedule Contingency Drawdown Analysis

To be provided upon receipt of the FFGA.

PROJECT COST

Project Cost Analysis – 865523

DOLLARS IN THOUSANDS

SCC CODE	DESCRIPTION	ORIGINAL BUDGET	CURRENT BUDGET		COMMITMENTS		EXPENDITURES		CURRENT FORECAST		CURRENT BUDGET/ FORECAST VARIANCE
			PERIOD	TO DATE	PERIOD	TO DATE	PERIOD	TO DATE	PERIOD	TO DATE	
10	GUIDEWAYS & TRACK ELEMENTS	490,712	0	490,712	0	407,391	4	34,961	0	450,008	-40,704
20	STATIONS, STOPS, TERMINALS, INTERMODAL	624,995	0	624,995	0	591,735	0	262	0	662,637	37,642
30	SUPPORT FACILITIES: YARDS, SHOPS, ADMIN, BLDGS	0	0	0	0	0	0	0	0	0	0
40	SITWORK & SPECIAL CONDITIONS	497,805	0	497,805	2,619	651,843	34,621	190,099	0	744,999	247,194
50	SYSTEMS	130,778	0	130,778	0	57,041	0	0	0	81,835	-48,943
	CONSTRUCTION SUBTOTAL (10-50)	1,744,291	0	1,744,291	2,619	1,708,010	34,624	225,322	0	1,939,479	195,189
60	ROW, LAND, EXISTING IMPROVEMENTS	467,874	0	467,874	35	127,806	191	2,256	0	466,874	-1,000
70	VEHICLES	38,092	0	38,092	0	0	0	0	0	43,806	5,714
80	PROFESSIONAL SERVICES	508,093	0	508,093	850	204,066	8,049	94,169	0	509,373	1,280
	SUBTOTAL (10-80)	2,758,350	0	2,758,350	3,504	2,039,882	42,864	321,747	0	2,959,532	201,182
90	UNALLOCATED CONTINGENCY	464,142	0	464,142	0	0	0	0	0	262,960	-201,182
100	FINANCE CHARGES	387,375	0	387,375	0	0	0	0	0	387,375	0
	TOTAL PROJECTS 865523 (FFGA & Non-FFGA)	3,609,867	0	3,609,867	3,504	2,039,882	42,864	321,747	0	3,609,867	0
	ENVIRONMENTAL/PLANNING - 465518 & 465523	1,131	0	1,131	0	897	2	865	0	1,131	0
	TOTAL PROJECTS 465518 & 465523 (ENV/PLAN'G)	1,131	0	1,131	0	897	2	865	0	1,131	0
	TOTAL PROJECTS 465518, 465523 & 865523	3,610,998	0	3,610,998	3,504	2,040,779	42,867	322,612	0	3,610,998	0

Original Budget, Current Budget and Current Forecast

The Original Budget, Current Budget and Current Forecast of \$3.6 billion reflects the Board approved Life of Project (LOP) Budget on February 28, 2019, plus Finance Charges of \$0.4 billion.

Commitments

The Commitments increased by \$3.5 million primarily due to Tunnels Contract C1151 change order, Quality Assurance task orders for Tunnels and Stations, and ROW real estate appraisal service purchase orders. The \$2 billion in Commitments to date represent 56.5% of the Current Budget.

Expenditures

The Expenditures increased by \$43 million due to costs associated with the Tunnels Contract C1151, Stations Contract C1152, AUR Contract C1153, Third Party Private Utility Agencies, Metro Project Administration, Engineering Management Services, Program Management Support Services, Master Cooperative Agreement with the City of Los Angeles, ROW parcel title report fees, and loss of rent reimbursement to Westwood Medical Plaza. The \$322.6 million in Expenditures to date represent 8.9% of the Current Budget.

Cost Contingency Drawdown

To be provided upon receipt of the FFGA.

Cost Contingency Drawdown Analysis

To be provided upon receipt of the FFGA.

Risk Management

Summary of Risks

The Risk Register is updated on a quarterly basis. *The Risk Register was updated on October 21, 2019. Within the reporting period two (2) new risks were identified and four (4) risks were closed, leaving a total of sixty-six (66) risks to be managed in the next reporting period.*

Of the sixty-six (66) risks, one (1) is scored as high, thirty-seven (37) as medium, and twenty-eight (28) as low.

The next WPLE Section 3 Project Risk Register quarterly update is scheduled for January 2020.

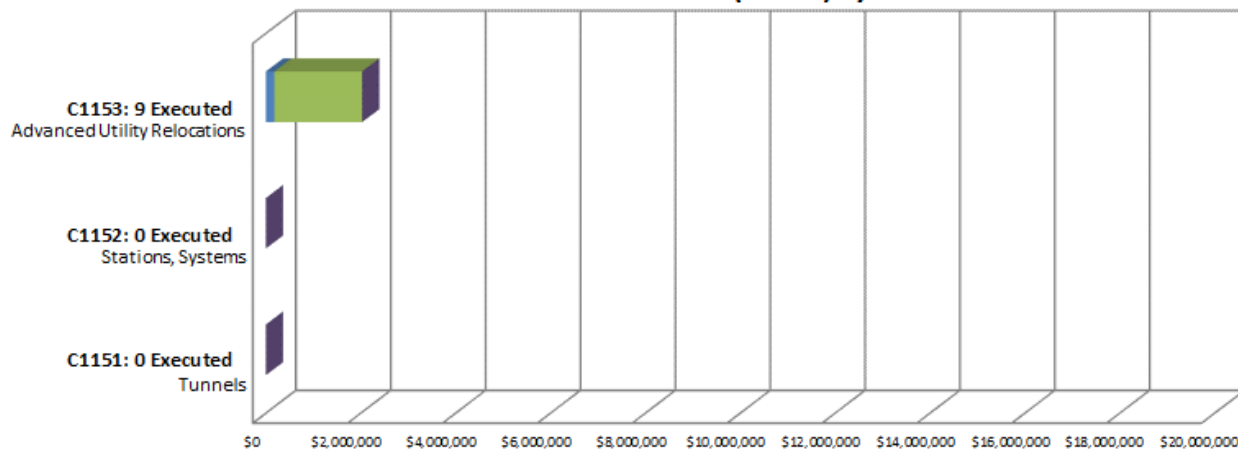
Top Five Risks

The table below shows the top five (5) project risks.

Risk ID	Risk Description	Risk Score	Action Items
701.3	Tariffs potentially impact D/B contractors.	10.5	1. Monitor the market trend and assess the potential impact. 2. Review contract condition for any escalation clause to allow cost increase.
287.3	Delays due to obtaining lane closures and peak hour exemptions.	9.0	1. Identify temporary bus stop re-locations. Meet with City to identify relocation of stops outside work areas. 2. Metro to review bus routes and stop locations. 3. Submit the Peak Hour Exemption Request
657.3	Replacement parking and related activities at VA hospital may impact cost and schedule. Additional parking spaces above and beyond the in-kind parking spaces replacement will be funded by local fund. No cost risk impact on FFGA budget.	9.0	1. Include in ROW budget - Complete 2. Identify local funding source to meet the additional parking spaces requirement. - closed 3. Close coordination with VA on the bus shuttle service and temporary parking area during the design and construction of the replacement parking structure.
653.3	Delay of contract turnover from tunnels to stations.	8.0	1. Review scope, ROW, procurement methodology, NEPA action, LONP to identify schedule risks. - closed 2. Received LONP and 130c documents. - closed 3. Review schedule interface between tunnels and stations contracts. 4. Setup regular collaboration meeting.
203.4	Dewatering cost increase due to the dewatering volume & treatment requirement exceeds GBR baseline estimate.	7.5	1. Evaluate the analysis from PE document

Summary of Contract Modifications

Contract Modifications (MODs) by Cost Level



	C1151 0 Executed	C1152 0 Executed	C1153 9 Executed	Total
■ Under \$100K	\$ -	\$ -	\$ 176,269	\$ 176,269
■ \$100K to \$250K	\$ -	\$ -	\$ -	\$ -
■ \$250K to \$1M	\$ -	\$ -	\$ 1,855,558	\$ 1,855,558
■ Over \$1M	\$ -	\$ -	\$ -	\$ -
Total Contract MODs	\$ -	\$ -	\$ 2,031,827	\$ 2,031,827
Contract Award Amount	\$ 410,002,000	\$ 1,363,620,000	\$ 11,439,000	\$ 1,785,061,000
% of Contract MODs	0.0%	0.0%	17.8%	0.1%

Percent of Contract MODs equals the Total Contract MODs divided by the Contract Award Amount.

Nine (9) Contract Modifications (MODs) with a total value of \$2.03 million have been executed since the award of C1153 Contract for Advanced Utility Relocations.

DISADVANTAGED BUSINESS ENTERPRISE (DBE)

Contract C1151

As of October 2019

DBE Goal – Design The percentage of funds apportioned to Design Contracts	11.19%
Current DBE Commitment Design Total DBE Committed Dollars divided by Total Contract Value for Design	\$4.3M 24.90%
Current DBE Participation Total amount paid to date to DBEs divided by the amount paid to date to Prime	\$2.1M 20.10%

Four (4) Design DBE sub-consultants have been identified to date.

DBE Goal – Construction The percentage of funds apportioned to Construction Contracts	17.10%
Current DBE Commitment Construction Contract commitment divided by current contract value for Construction	\$39.4M 10.05%
Current DBE Participation Total amount paid to date to DBEs divided by the amount paid to date to Prime:	\$4.7M 5.86%

Sixteen (16) Construction DBE sub-contractors have been identified to date.

Contract C1152

As of October 2019

DBE Goal – Design The percentage of funds apportioned to Design Contracts	19.25%
Current DBE Commitment Design Total DBE Committed Dollars divided by Total Contract Value for Design	\$13.9M 22.66%
Current DBE Participation Total amount paid to date to DBEs divided by the amount paid to date to Prime	\$0.2M 4.14%

Fifteen (15) Design DBE subcontractors have been identified for Design.

DBE Goal – Construction The percentage of funds apportioned to Construction Contracts	21.00%
Current DBE Commitment Construction Contract commitment divided by current contract value for Construction	\$24.8M 1.90%
Current DBE Participation Total amount paid to date to DBEs divided by the amount paid to date to Prime:	\$0.0 0.00%

Two (2) Construction DBE sub-contractors have been identified to date.

PROJECT LABOR AGREEMENTS (PLA)

The Contractor has committed to comply with PLA requirements for the Project. Project Staff will monitor and report the contractor's progress toward meeting the goals of the PLA once construction begins.

FINANCIAL/GRANT

Status of Funds by Source

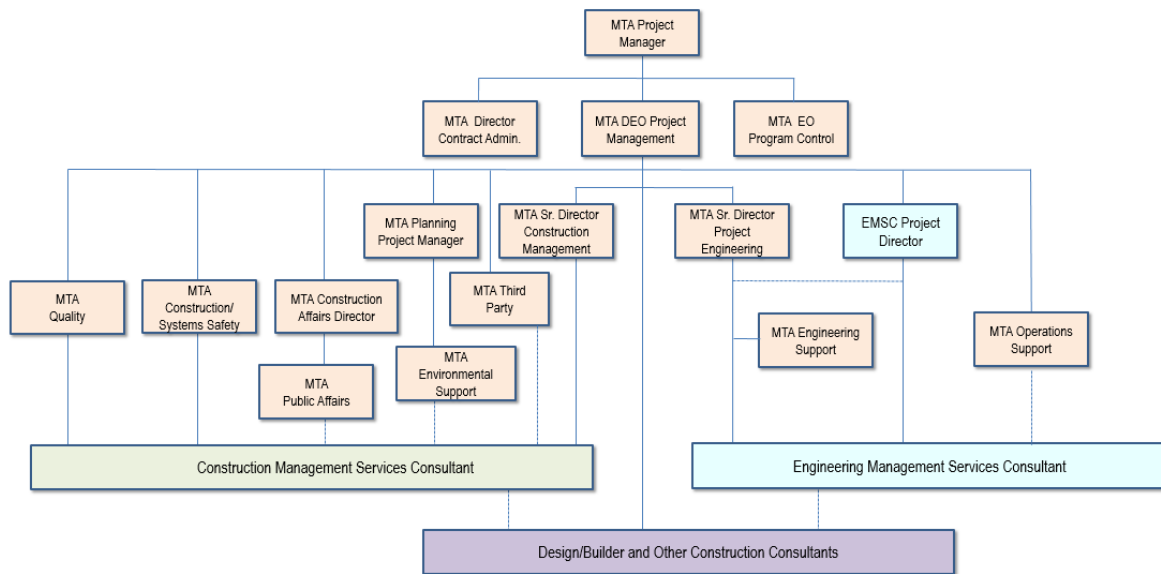
SOURCE	(A)	(B)	(C)	(D)	(D/B)	(E)	(E/B)	(F)	(F/B)
	ORIGINAL BUDGET	TOTAL FUNDS ANTICIPATED	TOTAL FUNDS AVAILABLE	\$ COMMITMENTS	%	\$ EXPENDITURES	%	\$ BILLED TO FUNDING SOURCE	%
FEDERAL - SECTION 5309 NEW STARTS	\$1,300.000	\$1,300.000	\$0.000	\$0.000	0%	\$0.000	0%	\$0.000	0%
FEDERAL RSTP	\$93.048	\$93.048	\$0.000	\$0.000	0%	\$0.000	0%	\$0.000	0%
FEDERAL CMAQ	\$45.000	\$45.000	\$0.000	\$0.000	0%	\$0.000	0%	\$0.000	0%
LOCAL AGENCY	\$96.391	\$96.391	\$0.000	\$0.000	0%	\$0.000	0%	\$0.000	0%
TCRP	\$10.001	\$10.001	\$10.001	\$10.001	100%	\$10.001	100%	\$10.001	100%
MEASURE R 35%	\$844.063	\$844.063	\$349.595	\$844.063	100%	\$128.097	15%	\$40.351	5%
MEASURE M 35%	\$1,190.661	\$1,190.661	\$359.129	\$1,186.715	100%	\$184.514	15%	\$82.471	7%
STATE RIP	\$31.834	\$31.834	\$0.000	\$0.000	0%	\$0.000	0%	\$0.000	0%
TOTAL	\$3,610.998	\$3,610.998	\$718.725	\$2,040.779	56.5%	\$322.612	8.9%	\$132.823	3.7%

Original Budget based on 2019 Board approved LOP Budget, plus Finance Charges of \$387.4 million.

PROJECT ORGANIZATION AND STAFFING

The design-build contract is being managed by a joint team of Metro and consultant personnel jointly located at the Integrated Project Management Office (IPMO).

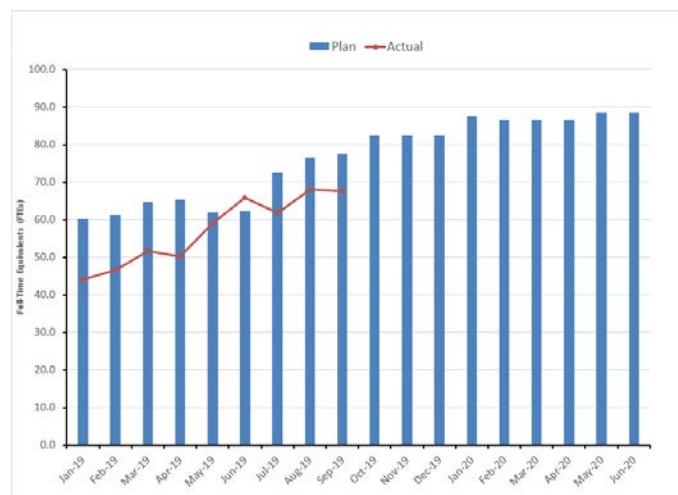
**Westside Purple Line Extension Section 3
 Responsibility and Reporting Matrix**



The overall FY20 Total Project Staffing Plan averages 83.3 FTEs per month.

For September 2019, there were a total of 24 FTEs for MTA's Project Administration Staff and 43.6 FTEs for Consulting Staff. The total project staffing for September 2019 was 67.6 FTEs.*

Total Project Staffing – Metro and Consultants

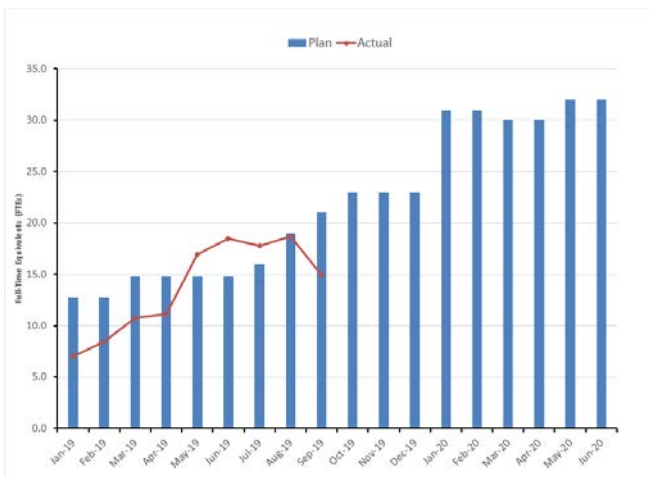


* Actuals include 4.7 FTEs related to Program Management Support Services (PMSS).

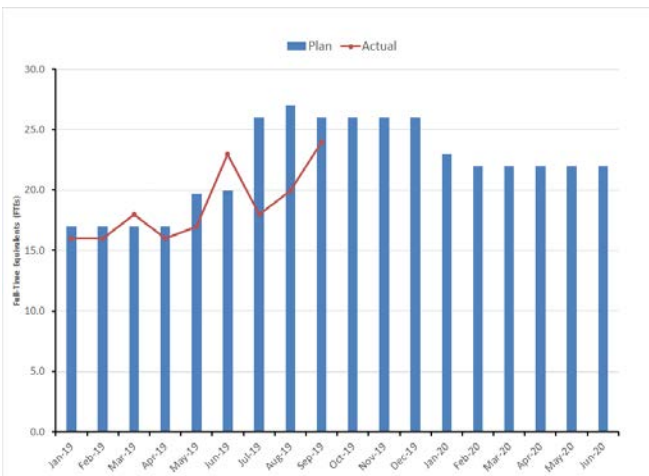
Metro Staff



CM Support Services Staff (Consultant)



Engineering Services Staff (Consultant)



Staffing by Group

The opposing graphs represent planned vs. actual staffing levels by group.

Metro staffing includes full time staff located in the IPMO as well as part-time support located at Gateway Headquarters.

Staffing plans are developed for each fiscal year based on project needs.

REAL ESTATE

Real Estate Status Summary									
Description	Number of Parcels	Certified	Appraisals Completed	Offers Made	Agreements Signed	Condemnation Filed	Relocations		Parcels Available
							Required	Completed	
Full Takes	0	0	0	0	0	0	0	0	0
Part Takes	2	2	0	0	0	0	0	0	0
TCE	5	4	0	0	0	0	0	0	0
SSE	75	75	1	1	0	0	0	0	0
Permanent Easements	1	1	1	1	0	0	0	0	0
Total Parcels	83	82	2	2	0	0	0	0	0

Property appraisals are underway.

QUALITY ASSURANCE

- Attended weekly project staff meetings for C1151 Tunnels, C1152 Stations, and weekly progress meetings with FKTP & TPOG.
- Reviewed Daily Inspection Reports by Metro inspectors (CMSS) for completeness and correctness.
- *Reviewed remaining substantial completion punch list items submitted by SBCC for C1153 AUR:*
 - June 2019 QC reports
 - Video Detection Service (VDS) as-builts
- *Completed audit of C1151 Tunnels contract with minor findings; subsequently issued Quality Action Request (QAR)*
- Reviewed and provided dispositions on various submittals for Contracts C1151 Tunnels and C1152 Stations.

ENVIRONMENTAL

- *Conducted field environmental monitoring and inspections for construction noise, stormwater, fugitive dust BMPs for FKTP, joint trench, and SoCal Gas activities.*
- *Participated in tunnels contract coordination meetings with FKTP. Evaluated progress and schedules for environmental compliance and sustainability efforts.*
- *Participated in coordination meetings with TPOG for sustainability and environmental compliance.*
- *Completed 2019 MMRP Quarterly Reporting for Q3.*
- *Participated in meetings for UCLA Real Estate ROE and MOA agreements.*

CONSTRUCTION AND COMMUNITY RELATIONS

- Attended the following meetings: Construction Management, Advanced Utility Relocations, Joint Trenching, Tunnels Contract, Stations Contract, Construction Relations, LADOT, UCLA Coordination, End-Wall Piling Planning, Bus Operations Coordination, Real Estate, VA Campus Coordination, SCE Coordination, LADWP Coordination, and SCG Coordination.
- *Participated in the VA Stand Down, assisted with Metro TAP card applications and distributed Metro PLE bags to 200 Veterans.*
- *Produced and distributed four (4) construction work notices for advanced utility relocations and SCE work.*
- Extensive coordination with major stakeholder groups, homeowners' associations, neighborhood councils and city council districts.
- Updated Facebook/Twitter and Metro.net as needed.

CREATIVE SERVICES

- *Planning for reinterpretation of VA Mural and coordination with LA County.*
- Continued research regarding construction fence artwork.
- *Outreach to artist community regarding upcoming opportunities.*

SAFETY & SECURITY

Contract C1151 Tunnels

- *Metro Safety staff attended weekly Tool Box Meetings, Progress Meetings, readiness reviews, and other project meetings to evaluate Contractors Safety Program compliance with contract requirements.*
- *Metro/FKTP project safety staff conducted schedule, safety/security and over-the-shoulder review meetings.*
- *Metro Safety hosted the Monthly Safety Meeting for all Westside-Purple Line Extension Contractors on October 31, 2019.*
- *Safety staff worked regularly with Program Management and Construction Relations staff to monitor issues related to public concerns regarding noise, traffic and public/construction interfaces as well as public interactions with the construction crews.*
- *Metro project safety staff conducted project Safety Orientation for new Metro/Consultants and IPMO project staff.*
- *Metro project safety staff conducted right-of-way (ROW) and safety / security walks, safety / security reviews and coordination with FKTP staff for oversight and support of all project field work activities.*
- *FKTP reported 12,656 actual work hours with no Recordable Injury for October 2019.*
- *FKTP Project to Date hours are 77,768 with no Recordable Injuries and no Lost Time Injuries.*
- *FKTP has a Recordable Injury Rate of 0. The Bureau of Labor Statistics reports that the National Average Recordable Injury Rate is 2.5 for heavy civil construction projects.*

Contract C1152 Stations, Trackwork, Systems, and Testing

- *Metro Safety staff attended weekly Tool Box Meetings, Progress Meetings, readiness reviews, and other project meetings to evaluate Contractors Safety Program compliance with contract requirements.*
- *Metro/TPOG project safety staff conducted schedule, safety/security and over-the-shoulder review meetings.*
- *Metro Safety hosted the Monthly Safety Meeting for all Westside-Purple Line Extension Contractors on October 23, 2019.*
- *Metro project safety staff conducted project Safety Orientation for new Metro/Consultants and IPMO project staff.*
- *TPOG reported 18,300 actual work hours with no Recordable Injury for October 2019.*
- *TPOG Project to Date hours are 44,066 with no Recordable Injuries and no Lost Time Injuries.*
- *TPOG has a Recordable Injury Rate of 0. The Bureau of Labor Statistics reports that the National Average Recordable Injury Rate is 2.5 for heavy civil construction projects*

APPENDIX CHRONOLOGY OF EVENTS

January 2011	FTA approval to enter Preliminary Engineering
August 2012	FTA Record of Decision
April 2017	Issued RFQ for C1151 Tunnels Design/Build Contract
May 2017	Issued IFB for C1153 AUR Contract
September 2017	Issued RFQ for C1152 Stations, Trackwork, Systems & Testing Design/Build Contract
January 2018	Issued NTP for C1153 AUR Contract
April 2018	C1153 Contractor commenced work
August 2018	FTA approval to enter New Starts Engineering Phase
September 2018	Received FTA approval for Letter of No Prejudice for C1151 Tunnels Contract
November 2018	Issued Contract Award for C1151 Tunnels Contract
December 2018	FTA completed environmental review of 23 CFR §771.130 (c)
January 2019	Issued NTP for C1151 Tunnels Contract
April 2019	Received FTA's Letter of No Prejudice for C1152 Stations Contract
May 2019	Issued Contract Award for C1152 Stations Contract
June 2019	C1153 AUR Contract achieved Substantial Completion
July 2019	Issued NTP for C1152 Stations Contract
September 2019	FKTP began SCE Ductbank Construction