



**Metro**

Metropolitan Transportation Authority

One Gateway Plaza  
Los Angeles, CA 90012-2952

213.922.2000 Tel  
metro.net

March 21, 2022

**TO:** Distribution

**FROM:**  Mat Antonelli  
Project Manager

**SUBJECT:** Regional Connector Transit Project  
February 2022 Monthly Project Status Report

Enclosed is the Monthly Project Status Report for the Regional Connector Transit Project. This report contains the Los Angeles County Metropolitan Transportation Authority's (LACMTA) representation of the Regional Connector Transit Project status for the period ending February 25, 2022.

If you have any questions regarding this report or its supporting information, please contact Dan Estrada, Deputy Executive Officer of Program Control at (213) 893-7130.

Enclosure

Los Angeles County  
Metropolitan Transportation Authority

# Regional Connector Transit Project

MONTHLY PROJECT STATUS REPORT

February 2022



# **REGIONAL CONNECTOR TRANSIT PROJECT**

## **MONTHLY PROJECT STATUS REPORT**

THE PREPARATION OF THIS DOCUMENT HAS BEEN FINANCED IN PART THROUGH A GRANT FROM THE U. S. DEPARTMENT OF TRANSPORTATION, FEDERAL TRANSIT ADMINISTRATION (FTA).

**February 2022**

## TABLE OF CONTENTS

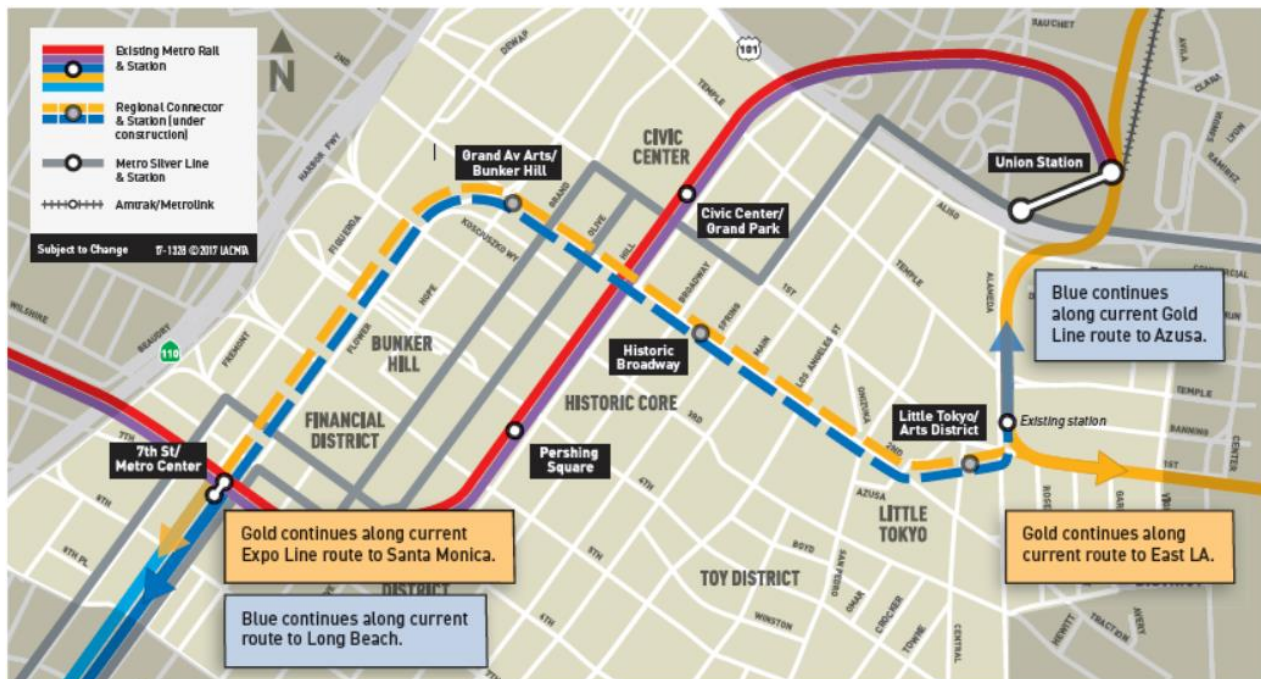
<b>Project Overview .....</b>	<b>1</b>
<b>Executive Summary .....</b>	<b>5</b>
<b>Project Update .....</b>	<b>10</b>
Project Schedule .....	10
Progress Summary.....	11
Planned vs. Actual Progress.....	11
Key Milestones Six-Month Look Ahead .....	12
Major Equipment Delivery.....	12
Project Cost.....	13
Project Cost Analysis.....	13
Cost Contingency Drawdown and Analysis .....	15
Summary of Contract Modifications.....	16
<b>Disadvantaged Business Enterprise (DBE) .....</b>	<b>17</b>
<b>Project Labor Agreement .....</b>	<b>17</b>
<b>Financial/Grant .....</b>	<b>18</b>
<b>Project Staffing.....</b>	<b>19</b>
<b>Real Estate .....</b>	<b>21</b>
<b>Quality Assurance.....</b>	<b>22</b>
<b>Environmental .....</b>	<b>23</b>
<b>Construction and Community Relations.....</b>	<b>24</b>
<b>Creative Services .....</b>	<b>25</b>
<b>Safety and Security .....</b>	<b>26</b>
<b>Appendix.....</b>	<b>27</b>
Chronology of Events	

## PROJECT OVERVIEW

### Project Background

The Regional Connector Transit Project (Project) will link the terminus of the Blue and Expo Lines at 7th/Metro Center to the Gold Line at a new underground Little Tokyo/Arts District Station through a new 1.9-mile underground alignment in downtown Los Angeles. The alignment includes two other underground stations: Grand Av Arts/Bunker Hill; Historic Broadway.

From the existing 7th Street/Metro Center Station, the Project alignment will extend north under Flower Street to 2nd Street. It will then proceed east underneath 2nd Street to just west of Central Avenue where the alignment will veer northeast under privately held property to the new Little Tokyo/Arts District Station at 1st and Central. The alignment continues briefly eastward through a Wye Junction (Wye) constructed beneath the 1st and Alameda intersection. To the north of the Wye at Temple and Alameda, and to the east of the Wye at 1st and Vignes, trains will connect with the Gold Line by rising to the surface through two new transition portals heading north to Pasadena, and east to East Los Angeles.



Upon completion, the Project will in effect facilitate regional light rail service along a 49-mile north-south route – Azusa to Long Beach, and a 23-mile east-west route – East LA to Santa Monica.

Passenger forecasts in 2035, as a result of the improved service, indicate 90,000 daily transit trips will occur through the 1.9-mile downtown trunk, including 17,000 new riders.

The above Project configuration is based on years of planning and environmental work that is reflected in the following milestones:

- Metro Board approval of Alternative Analysis – January 2009
- Initiation of Draft EIS/EIR – February 2009
- Initiation of Preliminary Engineering (PE) – January 2011
- Metro Board certification of Final EIS/EIR – April 2012
- FTA issuance of Record of Decision – June 2012
- PE and Advanced PE complete – March 2013
- FTA award of Full Funding Grant Agreement – February 2014.

### **Major Procurements**

Utility Relocation: Advanced Utility Relocation Contract C0981R was awarded to Pulice Construction, Inc. in January 2014, and the Notice to Proceed (NTP) issued on February 18, 2014. Contract C0981R was terminated for convenience on April 14, 2015, and remaining AUR work was transferred to the C0980 Design/Build (D/B) Contractor.

Guideway & Systems Contract: The Board authorized to solicit a major D/B contract, C0980, in August 2011. A contract was awarded on April 24, 2014, to Regional Connector Constructors (RCC), a joint venture of Skanska USA Civil West California District, Inc. and Traylor Brothers, Inc. in the amount of \$927,226,995. NTP was issued July 7, 2014. The final engineering and design for the joint venture was performed by Mott McDonald.

Vehicles: Metro procured four (4) Light Rail Vehicles (LRVs) for the Project. The vehicles were built and delivered by Kinkisharyo International, LLC under Option 2 of Contract P3010. Delivery and acceptance of four LRVs occurred late 2020.

Rail Operations Center (ROC): The existing functional operations at the ROC are being expanded to accommodate the central control functions associated with five new rail lines to include Regional Connector. The Project is contributing \$4.4M towards this expansion (representing a \$400k forecast increase in May 2021). The ROC expansion is scheduled to be complete in Spring 2022.

Fare Collection: Procurement of Universal Fare System and Ticket Vending Machine equipment was completed in January 2018 with award to Cubic Corporation. Metro is coordinating with RCC for installation and testing schedules, which are now expected to begin in *April 2022*.

## **Program Management**

The RCC contract is being managed by a team of Metro and consultant personnel jointly located at the Integrated Project Management Office (IPMO). The consultant component is comprised of The Connector Partnership, a joint venture between AECOM, Inc. and WSP (CPJV) which provides engineering and design support services while Arcadis, Inc., provides construction management support services. An overview of management staffing of these consultants is provided under the Staffing Section of this report. The on-site program management team is also supported by Metro Headquarters resources to include, but not limited to, engineering, risk management, environmental, quality management, operations, and creative services departments.

Project Schedule and Budget: The Revenue Service Date (RSD) is planned for Fall 2022.

In January 2017, the Metro Board revised the Life of Project (LOP) Budget for Regional Connector Transit Project 860228 to \$1.756 billion. The LOP budget for Concurrent Non-FFGA activities related to Project 861228 was increased to \$59.4 million in January 2021. Financing costs are estimated at \$14M. Cost forecasts remain consistent with budgets. A detailed FFGA budget forecast is included under the Project Cost Section of this report.

Funding has been secured from a variety of sources, detailed in the Financial/Grant Section on Page 18, to include:

- Federal American Rescue Plan Act
- Federal New Starts Grant
- Federal Congestion Management Air Quality and RIP Programs
- State Proposition 1A/1B and Capital Project Loan proceeds
- City of Los Angeles
- Lease revenues.

Construction and Community Relations: The Construction and Community Relations Team is tasked with promoting the Project and performing public outreach within the communities to keep stakeholders informed of construction activities occurring along the Project alignment. To facilitate the communication, community leadership councils have been formed which represent geographic-based constituent groups along the alignment.

The Project is also engaged in social media outreach and various marketing and advertising efforts designed to keep the public informed and supportive of the Project. These efforts are aimed at promoting businesses that are affected by construction. An overview of monthly activities is presented in the Construction and Community Relations Section on Page 24.

System Integration: The Project's integration of three separate lines, each possessing distinct system technologies, presents significant challenges for both the Project and Metro at-large. Extensive planning has been required to define logistics of the systems' cut overs that will be required. The Project continues to coordinate the completed systems interface design, with active installation of devices and systems, as well as testing as Metro maintains revenue service on the three operating lines. *Final testing and cut-overs are planned to be completed in April 2022.*

Rail Activation: The Project and Metro Operations recognize the extensive planning required in preparation for rail activation of the new regional light rail service the Project will enable through downtown Los Angeles. The training of 400+ operators and supervisors across the regions has surfaced as a key component to rail activation. This training will require dedicated time during rail activation to ensure safety.

Planning efforts have outlined a sequence of dependent testing, training, simulation, and safety certification. Detailed *weekly* reviews of each element leading to start-up continues. Interface between Project Management, Operations and Fire Life Safety representatives will intensify to ensure an integrated and timely approach is realized.



## EXECUTIVE SUMMARY

As of February 1, 2022, the Project achieved 90.4% completion based on earned value measurements for design and construction. The focus of the Project is to continue with systems, mechanical and electrical installations and testing, station finishes, and planning and installation of artwork at stations while the last of structural concrete and trackwork are active over the next several months. The following is an overview of current design and construction activities.

### Design Status

Miscellaneous design changes to approved design packages continue to be managed as Engineering Change Instructions (ECI). ECIs enable required changes to be promptly addressed while the balance of the scope is built.

### Construction Status

1st Street Cut & Cover Tunnel & U-Channel: Completed OCS *Installation and guideway lighting in the U-Channel*. Continued *wayside signage, handrail, and train control* installation. *Started communications* installation.

Wye Structure: Completed OCS *installation*. Continued installation of the diamond special track, curved rail installation at Alameda Left Track, and installation of Disconnect Switches at the Wye Disconnect Room.

Alameda Street Cut & Cover Tunnel & U-Channel: Completed *storm drains and guideway lighting installations*. Continued emergency walkway handrail, *train control, communication installations* and #10 double crossover track. Started OCS *installation*.

Little Tokyo/Arts District Station: In the station box, completed *special concrete platform paving*. Continued metal ceiling panels, fire protection installation, mechanical/electrical/plumbing installations, and elevator installations at PL1 and PL2. *Started edge light installation*. In the lower ancillary, continued hollow metal door installations, and mechanical/ electrical/plumbing installations. In the mid-vent ancillary, continued the CMU walls. In the upper ancillary, continued hollow metal door installations, and mechanical/electrical/ plumbing installations. Continued the installation of Train Control and Communications racks and equipment in the TC&C Room. In the Plaza area, completed installation of *radio tower foundation* at east plaza area. *Continued the canopy glazing* installation.

Reach 1 Tunnels Section (Little Tokyo/Arts District Station to Crossover Cavern): At Cross Passage #1, *completed door installations, started communications installation*. At Cross Passage #2, continued door installations, *started communications installation*. In the tunnels, continued walkway handrail and wayside signage installation.

Crossover Cavern: Continued the switch machine remedial work at the #8 Double Crossover.

Historic Broadway Station: At the platform level, *completed special concrete paving, and porcelain enamel art panel* installation. Continued the mechanical/electrical/plumbing installations, metal ceiling panel installation, *edge light housing installation* and PL #3 and #4 elevator installations. At the concourse level, continued metal ceiling panels, and the mechanical/electrical/plumbing installations. At the Concourse level, continued mechanical/electrical/plumbing installations, metal ceiling panels, and Train Control & Communications racks and equipment in the TC&C Room. At the Ancillary level, *completed the CMU walls, traction power equipment installation. Continued* mechanical/electrical/plumbing installations. *Started the installation of hollow metal doors.* At the Roof Level, *completed the East Tunnel Vent Plenum walls. Continued* station entrance area backfill and Emergency Exit #3 roof level walls. In the station box area, continued Emergency Exit #2 structure, utility relocations and street restoration.

Reach 2 Tunnel Section (Historic Broadway Station to Grand Av Arts/Bunker Hill Station): At Cross Passage #3, continued door installations. *Started the communications installation.* In the tunnels, continued wayside sign installations, and emergency walkway handrail installation.

Grand Av Arts/Bunker Hill Station: At the platform level, *completed special concrete paving, porcelain enamel art panels, and edge light housing* installation. Continued the metal panel ceiling, mechanical/electrical/plumbing, hollow metal doors and the PL7 | PL8 elevator installation. At the concourse level, continued the installation of *PL 1-3 elevators*, metal ceiling panels, hollow metal doors and mechanical/electrical/plumbing. Started installation of PL 4-6 elevators. At the lower and upper ancillary levels, continued the installation of mechanical/electrical/plumbing, hollow metal doors, and the Emergency Ventilation Fans. At the roof level, continued the installation of hollow metal doors, and mechanical/electrical/plumbing. At the upper roof level, continued the installation of mechanical/electrical/plumbing. *Started hollow metal door installation.* At the Plaza, *continued* the installation of metal panel ceiling installation, and mechanical/electrical/plumbing. At the Upper Plaza, continued the installation of steel shoes (barrier glazing) and canopy steel installation. At Northbound Flower Street, Hope Street and 2nd Place, continued street restoration.

Reach 3 Tunnel Section (Grand Av Arts/Bunker Hill Station to Flower): *Completed* installation of the wayside signs.

Flower Cut & Cover Tunnel: In the TC&C Room and Mechanical Room, *completed* the hollow metal doors.

### **Schedule Summary**

Milestone 1.1 was not achieved as planned.

A redefined Substantial Completion 1.1 is now targeted for April 8, 2022. It will facilitate access to Metro Operations for the initiation of Rail Activation and Start-up. This milestone will deliver the guideway throughout the alignment, station platforms, along with final cutovers at 7th/Metro, Union, and Aliso Pico Stations.

The critical path to this milestone is traced with the completion of installations and testing of trackwork, OCS, train control, and communications along the Alameda and First Street legs of the Project. Enacting the final three cutovers at 7th/Metro, Union and Aliso Pico Stations *in early April* will turn over the railroad to Operations.

Milestone 1.2 will be redefined to include the balance of all stations and surface-level civil work related to the restoration of streets and landscaping. June 1, 2022 is the target for this milestone. The elevators at Grand Arts/Bunker Hill Station will trace the critical path for this milestone through the building of the last car sets, installation of final communication devices, integrated systems testing, and state certification of the elevator set.

### **Costs Summary**

Project costs continue to track narrowly within budget. To date, the design and construction changes related to base scope represent *11.0%* of the contract value. There is one notice of intent to claim by RCC. The notice relates to Historic Broadway Station SOE stability issues. Detailed cost and budget information begins on Page 13.

### **Coronavirus Impacts**

It remains unclear as to what extent the Coronavirus (COVID-19) has impacted construction operations. RCC has notified Metro of work inefficiencies and impacts to material supply chains, especially related to stainless steel, special trackwork, conduit deliveries, and electrical equipment. These reports highlight direct schedule impacts of equipment and materials – leading to subsequent delays with testing for a net unmitigated impact of 214 days. Metro continues to review the situation while working with RCC to mitigate the situation on as many fronts practical.

There has been a total of 129 positive cases through *February 2022*; all cases have been closed with sufficient negative testing. RCC continues to follow local, state, and federal regulations related to COVID-19 to maintain operations.

### **Key Management Concerns**

Item 1: Rail Activation for integrating three transit lines is complex. *And more so when those lines are in-service. All technical challenges are more difficult when the logistics of maintaining service are required while changes are put into play. Through collaboration among stakeholders, successful planning, and execution of cut-overs at all three stations have progressed safely.*

Status/Action: *Twelve (12) weekend bus bridges have been successfully completed as of the data date. Continued planning and incorporation of lessons-learned are underway for the remaining scheduled weekend outages now planned in March and April 2022.*

Item 2: RCC has indicated that COVID-19 has impacted performance on the Project through the late delivery of several MCC units, as well as elements where stainless steel is prominent (i.e., dampers and attenuators). RCC has updated their list of materials/commodities adversely impacted by COVID-19.

Status/Action: RCC has initiated mitigation measures in anticipation of delayed equipment deliveries. Metro continues to monitor the situation to determine the extent of actual or likely impact to schedule; MCC units now all installed.

RCC has made a formal request for a time extension due to COVID-19. The Project is awaiting Metro Program Management direction on the path-forward to reconcile.

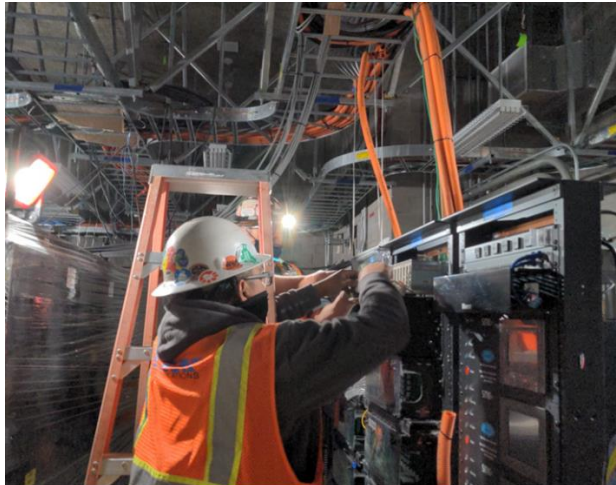
Project Construction Photos



OCS on 1st St Leg



Trackwork on Alameda Leg



CTS SIT at Little Tokyo/Arts Districts Station



Communication rack installation at Grand Av/Arts District Station



Porcelain enamel steel art panels at Platform Level at Historic Broadway Station

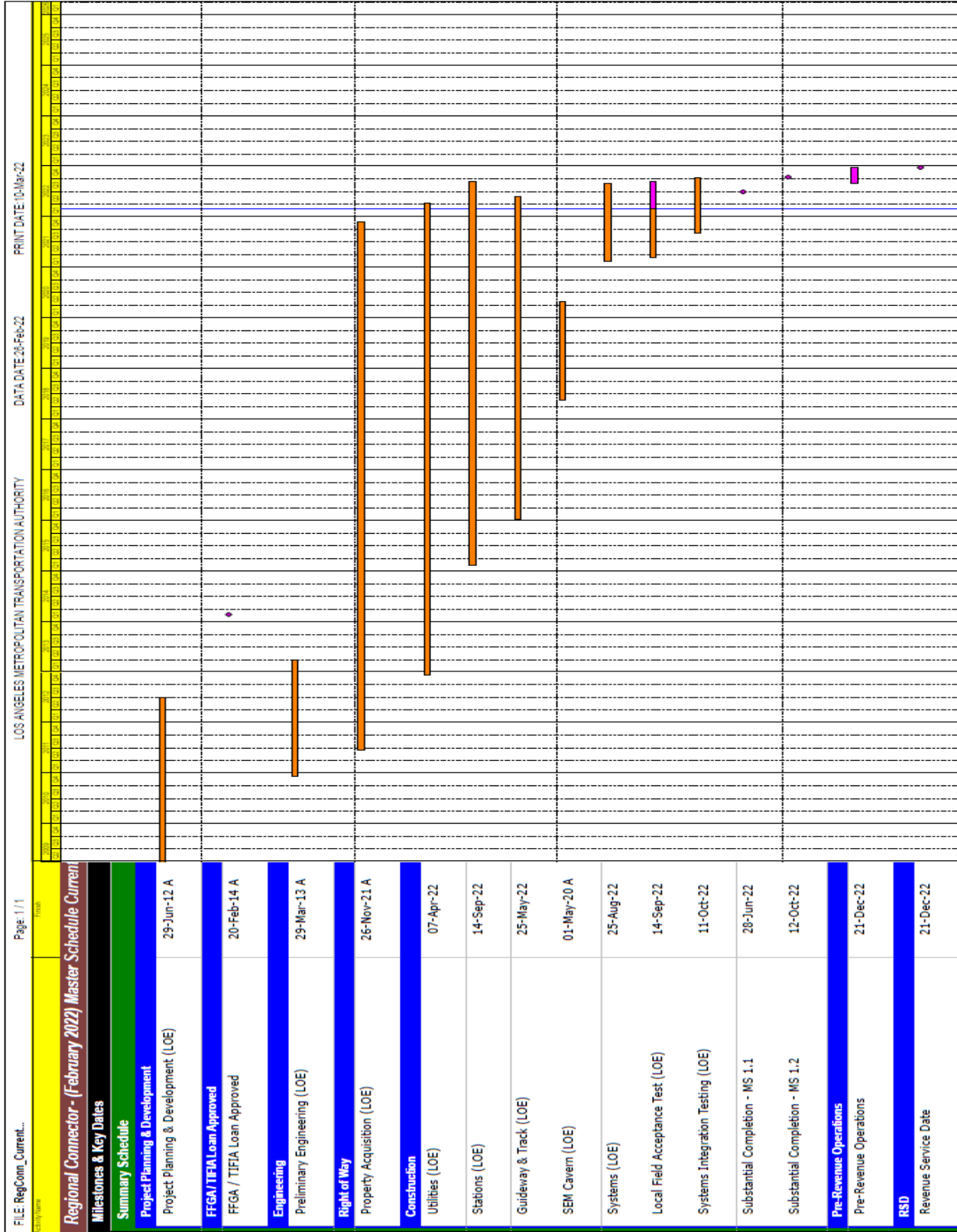


Canopy installation at Grand Av Arts/Bunker Hill Station

# PROJECT UPDATE

## PROJECT SCHEDULE

### Project Summary Schedule (Unmitigated)











**Progress Summary**

	Status	Change from Last Month	Comment
Forecast Revenue Service	Fall 2022	None	
Proposed FFGA Revenue Service	11/26/2023	None	
<b>Final Design Progress:</b>			
Contract C0980	100%	NA	
<b>Construction Contracts Progress:</b>			
Contract C0981R & C0980	89.7%	0.8%	

**Note:** Construction Progress excludes General Requirements, Construction and Design Mobilization, Final Design and Provisional Sum costs (Schedule C). Progress values include executed modifications and change orders.

**Key Milestone Six-Month Look Ahead**

	Milestone Date	Feb-22	Mar-22	Apr-22	May-22	Jun-22	Jul-22
Complete East Vent Plenum at Historic Broadway Station	02/07/22 A	⬡					
Complete #5 Turnouts and Diamond Track	03/01/22		⬡				
Complete Plaza Drains & Catch Basins at Little Tokyo / Art District Station	03/24/22		⬡				
Complete Train Control Installation	03/30/22			⬡			
Complete Backfill at Historic Broadway Station	04/07/22			⬡			
Complete OCR - Alameda   1st Street to Wye	04/20/22			⬡			
Complete Plaza Concrete Paving at Little Tokyo / Art District Station	05/16/22				⬡		
Complete Elevators at Historic Broadway Station	05/20/22				⬡		
Complete Plaza Concrete Paving at Historic Broadway Station	05/26/22				⬡		
Mangrove Site Restoration	06/01/22					⬡	
Complete Elevators at Grand Ave / Bunker Hill Station	06/06/22					⬡	
Complete Plaza Architectural Finishes at Grand Ave / Bunker Hill Station	07/19/22						⬡

 MTA Staff     
  MTA Board Action     
  FTA (Federal Transit Administration)     
  Utility Company  
 Other Agencies     
  Contractors     
  Design Consultant     
  C0980 D/B Contractor  
 \* New Date

**Major Equipment Delivery**

Metro Supplied Equipment

Equipment	Initial Procurement	Scheduled Delivery	Scheduled Installation
LRT Vehicles	(NTP) 08/20/2012 A	Option 2 12/31/2020 A	N/A
Ticket Vending Machines	~ 01/30/2018 A	07/08/19 A (warehoused)	12/23/2021 ~04/19/2022



## PROJECT COST

### Project Cost Analysis – 860228

REGIONAL CONNECTOR TRANSIT CORRIDOR PROJECT (860228)  
COST REPORT  
DOLLARS IN THOUSANDS

SCC CODE		FFGA BUDGET	ORIGINAL BUDGET	CURRENT BUDGET		COMMITMENTS		EXPENDITURES		CURRENT FORECAST		BUDGET/ FORECAST VARIANCE
				PERIOD	TO DATE	PERIOD	TO DATE	PERIOD	TO DATE	PERIOD	TO DATE	
10	GUIDEWAYS & TRACK ELEMENTS	280,622	204,691	0	272,628	-1,662	274,435	436	267,371	0	273,227	599
20	STATIONS, STOPS, TERMINALS, INTERMODAL	354,268	219,477	0	239,321	0	238,059	3,476	194,445	60	238,881	-440
30	SUPPORT FACILITIES: YARDS, SHOPS, ADMIN, BLDGS	0	0	0	0	0	0	0	0	0	0	0
40	SITWORK & SPECIAL CONDITIONS	141,785	422,453	0	627,885	605	604,593	3,154	575,560	-697	653,914	26,029
50	SYSTEMS	69,667	73,848	0	76,452	310	70,002	3,148	52,020	7	75,481	-971
	CONSTRUCTION SUBTOTAL (10-50)	846,343	920,468	0	1,216,286	-747	1,187,089	10,213	1,089,395	-630	1,241,503	25,217
60	ROW, LAND, EXISTING IMPROVEMENTS	115,889	74,208	0	59,946	0	57,858	0	57,845	0	60,196	250
70	VEHICLES	16,275	16,275	0	16,275	0	16,275	1,141	14,719	0	16,275	0
80	PROFESSIONAL SERVICES	261,455	257,973	0	404,158	1	377,445	1,237	357,821	280	405,804	1,646
	SUBTOTAL (10-80)	1,239,963	1,268,925	0	1,696,666	-746	1,638,667	12,590	1,519,780	-350	1,723,778	27,113
90	UNALLOCATED CONTINGENCY*	135,399	126,892	0	32,675	0	0	0	0	350	23,057	-9,618
100	FINANCE CHARGES	27,571	7,115	0	14,301	0	0	0	0	0	14,301	0
	TOTAL PROJECTS (10-100)	1,402,932	1,402,932	0	1,743,642	-746	1,638,667	12,590	1,519,780	0	1,761,137	17,495
	ENVIRONMENTAL/PLANNING - 400228		6,075	0	6,075	0	6,075	0	6,075	0	6,075	0
	ENVIRONMENTAL/PLANNING - 460228		18,125	0	20,425	0	20,425	0	18,988	0	20,425	0
	TOTAL PROJECTS (EVN/PLAN'G)		24,200	0	26,500	0	26,500	0	25,063	0	26,500	0
	TOTAL	1,402,932	1,427,132	0	1,770,142	-746	1,665,167	12,590	1,544,843	0	1,787,637	17,495

NOTE: EXPENDITURES ARE CUMULATIVE THROUGH FEB 2022.

METRO AND TRIBUNE AGREED ON REIMBURSEMENT OF ~\$1.6 MILLION RELATED TO 2ND/BROADWAY OVERBUILD.

\*PENDING FOR BOARD APPROVAL.

#### Original Budget:

The Original Budget of \$1.427 billion reflects the April 2014 Board approved LOP Budget, plus finance costs of \$7.1 million.

#### Current Budget:

In January 2017, the Metro Board revised the LOP Budget for Project 860228 to \$1.756 billion to reflect then current and present Project scope. Finance costs, estimated at \$14.3 million, are also reflected leading to a total of \$1.770 billion.

#### Commitments:

Overall commitments *decreased* by \$0.75 million this month to \$1.67 billion which represents 94.1% of the Current Budget.

#### Expenditures:

Expenditures are cumulative through *February* 2022 and increased by \$12.6 million this month for costs across the Project. One billion five hundred *forty-five* million (\$1.54 billion) in expenditures to date represent 87.3% of the Current Budget.

#### Current Forecast:

The total current forecast is \$17.5 million more than the total current budget. The Project plans to go to the Board in Spring 2022 to request additional funding to address specific request of FTA to increase Project Contingency in-line with *the pending FFGA amendment*.

**Project Cost Analysis – 861228**

CONCURRENT NON-FFGA ACTIVITIES (861228)  
PROJECT COST STATUS BY FTA SCC  
DOLLARS IN THOUSANDS

SCC CODE		ORIGINAL BUDGET	CURRENT BUDGET		COMMITMENTS		EXPENDITURES		CURRENT FORECAST		BUDGET/ FORECAST VARIANCE
			PERIOD	TO DATE	PERIOD	TO DATE	PERIOD	TO DATE	PERIOD	TO DATE	
10	GUIDEWAYS & TRACK ELEMENTS	0	0	0	0	0	0	0	0	0	0
20	STATIONS, STOPS, TERMINALS, INTERMODAL	0	0	0	0	0	0	0	0	0	0
30	SUPPORT FACILITIES: YARDS, SHOPS, ADMIN, BLDGS	10,480	0	0	0	0	0	0	0	0	0
40	SITework & SPECIAL CONDITIONS	0	0	13,548	0	13,548	489	11,936	0	13,548	0
50	SYSTEMS	0	0	5,950	0	5,014	0	3,621	0	5,950	0
	CONSTRUCTION SUBTOTAL (10-50)	10,480	0	19,498	0	18,562	489	15,557	0	19,498	0
60	ROW, LAND, EXISTING IMPROVEMENTS	27,748	0	38,377	0	38,377	0	37,475	0	38,377	0
70	VEHICLES	0	0	0	0	0	0	0	0	0	0
80	PROFESSIONAL SERVICES	650	0	1,150	0	758	0	428	0	1,150	0
	SUBTOTAL (10-80)	38,878	0	59,025	0	57,697	489	53,460	0	59,025	0
90	UNALLOCATED CONTINGENCY	1,113	0	365	0	0	0	0	0	365	0
100	FINANCE CHARGES	0	0	0	0	0	0	0	0	0	0
	TOTAL PROJECTS (10-100)	39,991	0	59,389	0	57,697	489	53,460	0	59,389	0
	861228 TOTAL	39,991	0	59,389	0	57,697	489	53,460	0	59,389	0

NOTE: EXPENDITURES ARE CUMULATIVE THROUGH FEB 2022.

**Original Budget:**

The Original Budget reflects the Board approved LOP Budget established April 24, 2014.

**Current Budget:**

In January 2021, the Metro Board approved budget increase of \$12.9 million for the Early Completion Incentive Agreement increasing the Project 861228 LOP budget to \$59.4 million, to reflect the current Project scope.

**Commitments:**

Commitments unchanged this month at \$57.7 million which represents 97% of the Current budget.

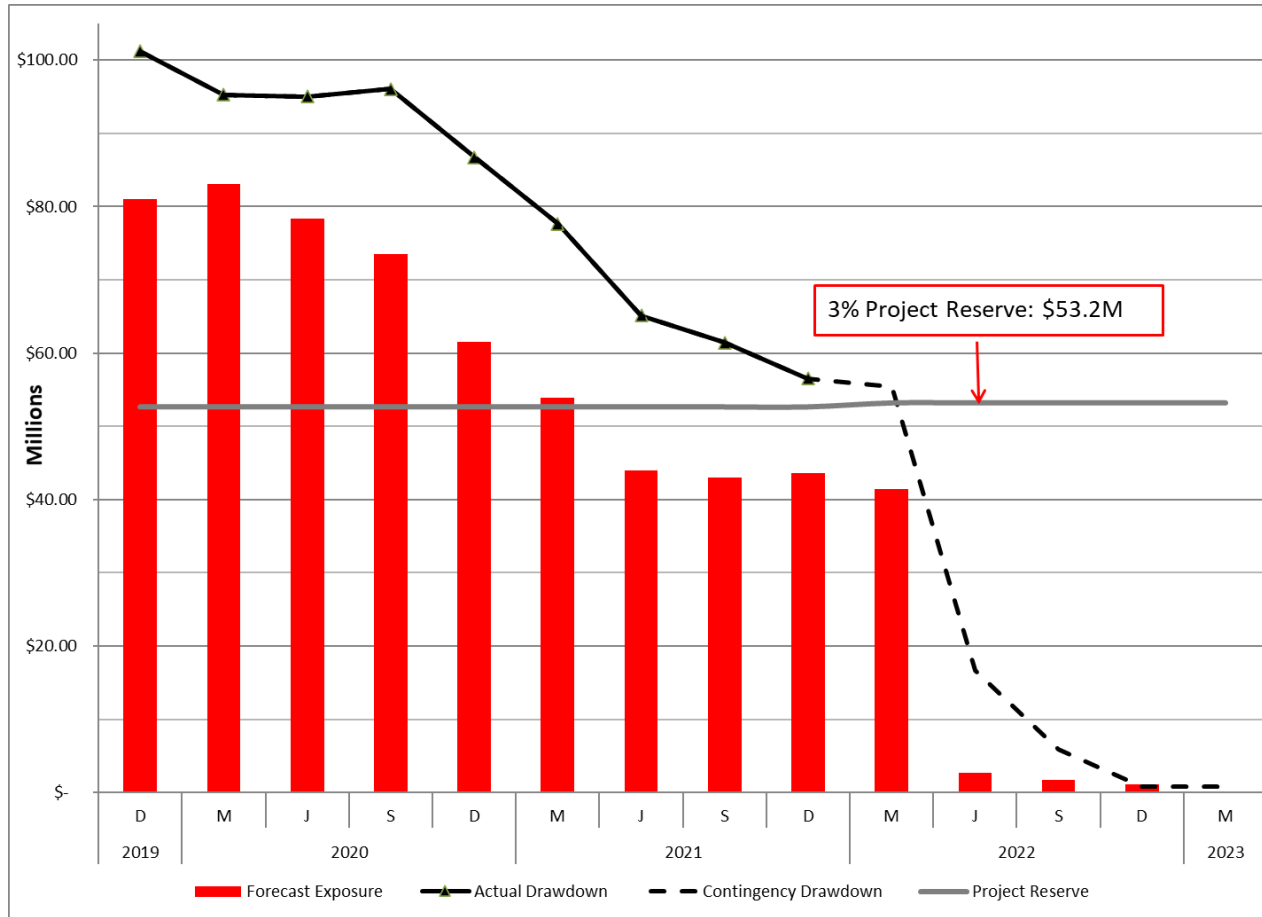
**Expenditures:**

Expenditures are cumulative through *February 2022* and increased by \$0.5 million this month related to RCC. Fifty-three million *five hundred thousand* (\$53.5) in expenditures to date represent *90.0%* of the Current Budget.

**Current Forecast:**

The total current forecast remains equal to the total current budget.

### Cost Contingency Drawdown



### Cost Contingency Drawdown Analysis

The Cost Contingency Drawdown curve reflects cost commitments and forecast exposure, thereby providing a depiction of overall contingency status. Basing the drawdown on exposures rather than executed contract modifications eliminates the administrative processing time involved to finalize contract modifications from the drawdown projections. Planned expenditures per quarter have also been updated to reflect the current schedule and risks. The Project is expected to reach the 3% Project Reserve (Total Contingency) threshold in Spring 2022. The curve includes \$17.5 million pending Board approval.

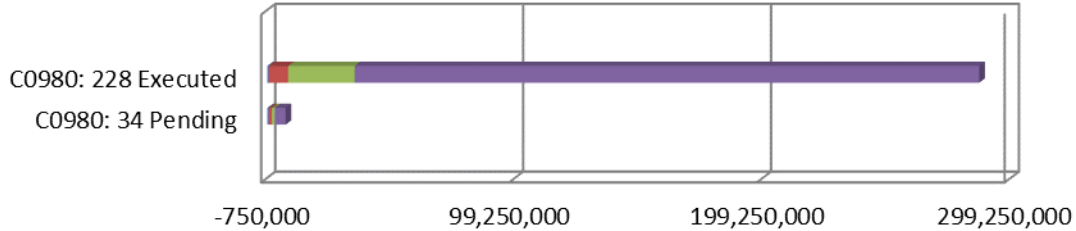
In *February* there was a \$0.6 million contingency drawdown into executed modifications. The remaining unallocated contingency is \$23.1 million.

PROJECT COST CONTINGENCY						
DOLLARS IN THOUSANDS						
	Original Contingency	LOP Contingency	Previous Period	Current Period	To-Date	Remaining Contingency (Forecast)
Unallocated Contingency *	124,919	89,946	(49,788)	350	(66,888)	23,057
Allocated Contingency	86,345	92,809	(41,807)	(900)	(42,707)	50,101
<b>Total Contingency</b>	<b>211,263</b>	<b>182,754</b>	<b>(91,596)</b>	<b>(550)</b>	<b>(109,596)</b>	<b>73,159</b>

\*Add'l \$17.5M is included in the unallocated contingency, pending Board approval.

**Summary of Contract Modifications**

**Contract Modifications (MODs) by Cost Level**



	C0980		Total
	228 Executed	34 Pending	
■ Under \$100K	600,399	543,342	1,143,741
■ \$100K to \$250K	7,815,819	1,307,000	9,122,819
■ \$250K to \$1M	26,866,244	1,195,000	28,061,244
■ Over \$1M	251,980,830	4,350,000	256,330,830
<b>Total Contract MODs</b>	<b>287,263,292</b>	<b>7,395,342</b>	<b>294,658,634</b>
<b>Contract Award Amount</b>	<b>927,226,995</b>	<b>927,226,995</b>	
<b>% of Contract MODs</b>	<b>31.0%</b>	<b>0.8%</b>	

Note:

1. Percent of Contract MODs equals the Total Contract MODs divided by the Contract Award Amount.
2. Pending Mods are under negotiation.

Two hundred and twenty-eight (228) changes with a total value of \$287.3 million have been executed since NTP of Contract C0980. An additional 34 changes, with a total estimated value of \$7.4 million, are pending. Twenty-four million and fifty thousands of the \$287.4 million executed modifications are funded from Eastside Access Project and Non-FFGA Project, \$5.03M and \$19.02M, respectively.

## DISADVANTAGED BUSINESS ENTERPRISE (DBE)

As of *January 2022*:

<b>DBE Commitment – Design</b> The percentage of funds apportioned to Design Contracts	22.63%
<b>Current DBE Commitment Design</b> Total DBE Committed Dollars divided by Total Contract Value for Design	\$16.8M (22.63%)
<b>Current DBE Participation</b> Total amount paid to date to DBEs divided by the amount paid to date to Prime	24.57%

Fourteen (14) Design DBE sub-consultants have been identified to date.

<b>DBE Commitment – Construction</b> The percentage of funds apportioned to Construction Contracts	18%
<b>Current DBE Commitment Construction</b> Contract commitment divided by current contract value for Construction	\$204.1M (18%)
<b>Current DBE Participation</b> Total amount paid to date to DBEs divided by the amount paid to date to Prime	20.03%

Construction DBE sub-contractors that have been identified increased to one hundred twenty-six (126).

## PROJECT LABOR AGREEMENTS (PLA)

As of *January 2022*:

<b>Targeted Worker Goal</b> Construction work to be performed by residents from Economically Disadvantaged Area in the United States	40.00%
<b>Targeted Worker Current Attainment</b>	62.01%
<b>Apprentice Worker Goal</b> Construction work to be performed by Apprentices	20.00%
<b>Apprentice Worker Current Attainment</b>	20.25%
<b>Disadvantaged Worker Goal</b> Construction work to be performed by Disadvantaged Workers who are residents of the United States	10.00%
<b>Disadvantaged Worker Current Attainment</b>	11.35%

## FINANCIAL/GRANT

### Status of Funds by Source

February 2022

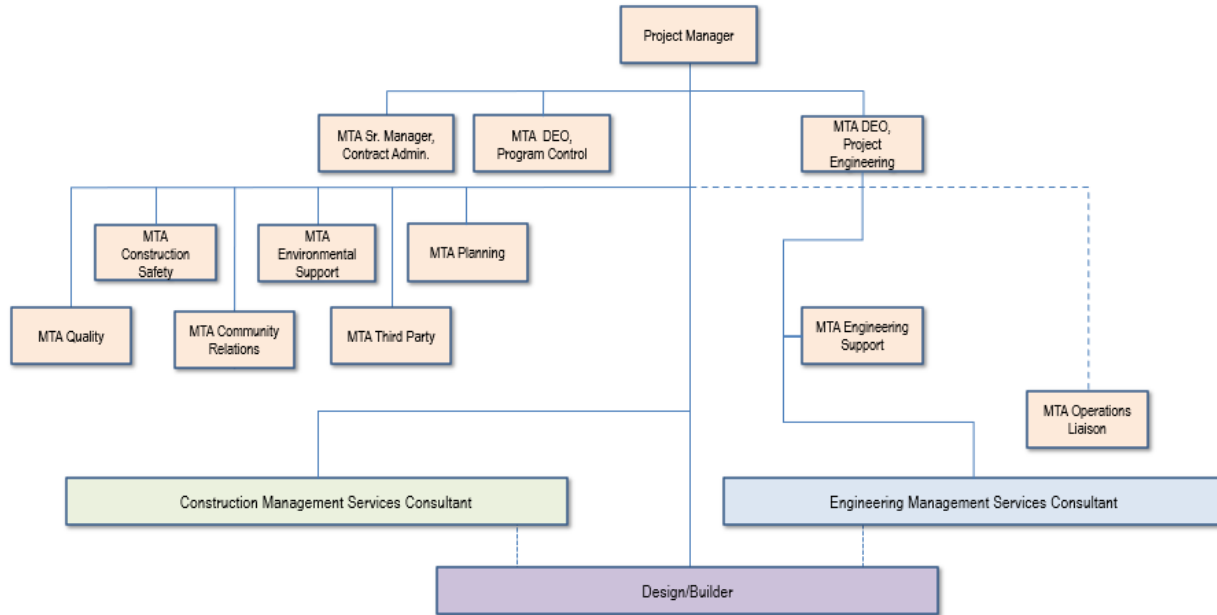
SOURCE	ORIGINAL BUDGET	TOTAL FUNDS	TOTAL FUNDS	COMMITMENTS		EXPENDITURES		BILLED TO FUNDING SOURCE	
		ANTICIPATED	AVAILABLE	\$	%	\$	%	\$	%
FEDERAL - CMAQ	\$64.00	\$228.01	\$64.00	\$167.62	74%	\$64.00	28%	\$50.98	22%
FEDERAL - SECTION 5309 NEW STARTS	\$669.90	\$669.90	\$669.90	\$669.90	100%	\$658.19	98%	\$629.24	94%
FEDERAL - SECTION 5309 NEW STARTS - AMERICAN RESCUE PLAN ACT		\$ 59.23	\$0.00	\$5.00	8%		0%	\$0.00	0
FEDERAL - RIP	\$0.00	\$1.41	\$1.41	\$1.41	100%	\$1.41	100%	\$1.41	100%
MEASURE R - TIFIA LOAN****	\$160.00	\$141.89	\$141.89	\$141.89	100%	\$141.89	100%	\$141.89	100%
MEASURE R BONDS****	\$0.00	\$9.35	\$9.35	\$9.35	100%	\$9.35	100%	\$9.35	100%
STATE PROPOSITION 1A HSRB *	\$114.87	\$114.87	\$114.87	\$114.87	100%	\$114.87	100%	\$114.87	100%
STATE PROPOSITION 1B PTMISEA **	\$149.50	\$135.16	\$135.16	\$135.16	100%	\$135.16	100%	\$135.16	100%
STATE STIP RIP	\$2.59	\$19.55	\$15.90	\$19.55	100%	\$19.55	100%	\$10.69	55%
STATE CAPITAL PROJECT LOANS - OTHERS ***	\$132.47	\$220.66	\$236.38	\$224.14	102%	\$224.14	102%	\$224.14	102%
MEASURE R	\$27.57	\$0.00	\$0.00	\$0.00	0%	\$0.00	0%	\$0.00	0%
CITY OF LOS ANGELES	\$41.98	\$41.98	\$41.98	\$41.98	100%	\$41.98	100%	\$41.98	100%
ROW LEASE REVENUES	\$64.25	\$19.85	\$19.85	\$19.85	100%	\$19.85	100%	\$19.47	98%
GENERAL FUND - METRO	\$0.00	\$93.97	\$79.80	\$114.45	122%	\$114.45	122%	\$114.45	122%
<b>TOTAL</b>	<b>\$1,427.13</b>	<b>\$1,755.84</b>	<b>\$1,530.50</b>	<b>\$1,665.17</b>	<b>95%</b>	<b>\$1,544.85</b>	<b>88%</b>	<b>\$1,493.64</b>	<b>85%</b>

NOTES:

1. EXPENDITURES ARE CUMULATIVE THROUGH FEBRUARY 28, 2022
  2. METRO AND TRIBUNE AGREED ON REIMBURSEMENT OF \$1.6 MILLION RELATED TO 2ND/BOARDWAY OVERBUILD.
  3. ORIGINAL BUDGET BASED ON FUNDING PLAN INCLUDED IN THE APPROVED FULL FUNDING GRANT AGREEMENT
  4. LACMTA RESERVES THE ABILITY TO UPDATE COSTS AND CHANGE FUND SOURCES AS REQUIRED.
- \* STATE PROPOSITION 1A HIGH SPEED RAIL BONDS  
 \*\* STATE PROPOSITION 1B PUBLIC TRANSPORTATION MODERNIZATION, IMPROVEMENT AND SERVICE ENHANCEMENT ACCOUNT  
 \*\*\* OTHERS INCLUDE TDA ADMINISTRATION, AND NB PROPOSITION A ADMINISTRATION (FOR A TOTAL OF \$.255M)  
 \*\*\*\* OTHERS INCLUDE TDA ADMINISTRATION, AND NB PROPOSITION A ADMINISTRATION (FOR A TOTAL OF \$.255M)  
 \*\*\*\*\* TIFIA LOAN CLOSED ON AUGUST 27, 2020. BALANCE OF ORIGINAL TIFIA BUDGET WILL BE MEASURE R BONDS.

## PROJECT ORGANIZATION AND STAFFING

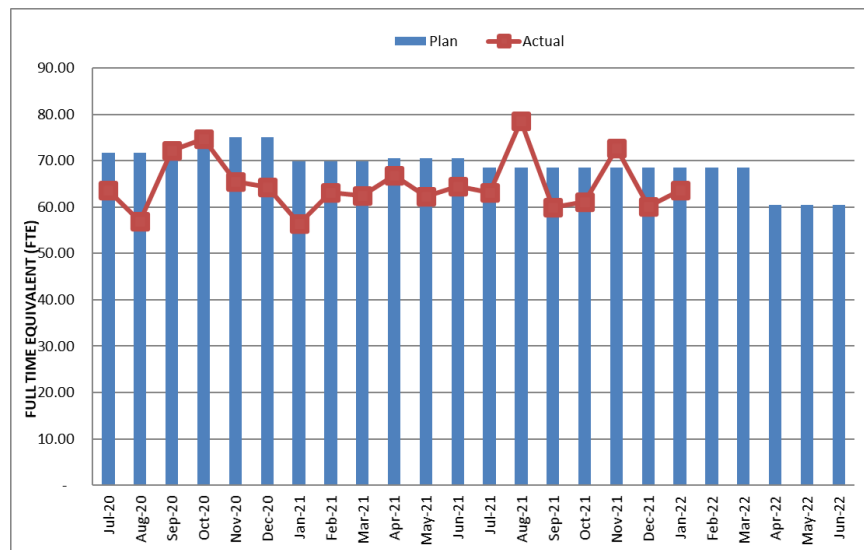
The D/B contract is being managed by a joint team of Metro and consultant personnel located at the Integrated Project Management Office (IPMO).



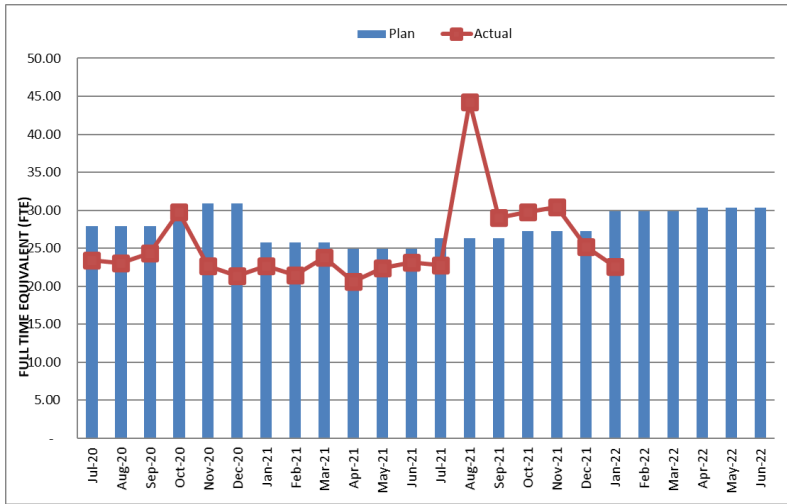
Updated: 03/2021

The overall FY22 Total Project Staffing plan averages 66.5 FTEs per month. The total actual project staffing for *January 2022* was 63.6; 22.24 FTEs for Metro’s Project Administration staff and 41.1 FTEs for consulting staff. Consulting staff FTEs are based on monthly invoice billable hours. Review of staffing plans is on-going to ensure staffing needs are appropriately managed. Metro August actuals FTEs doubled the forecast number due to Bus Bridge closure, Operations training, and incorrect charging. Corrections will be adjusted.

### Total Project Staffing – Metro and Consultants



### Metro Staff



### Staffing by Group

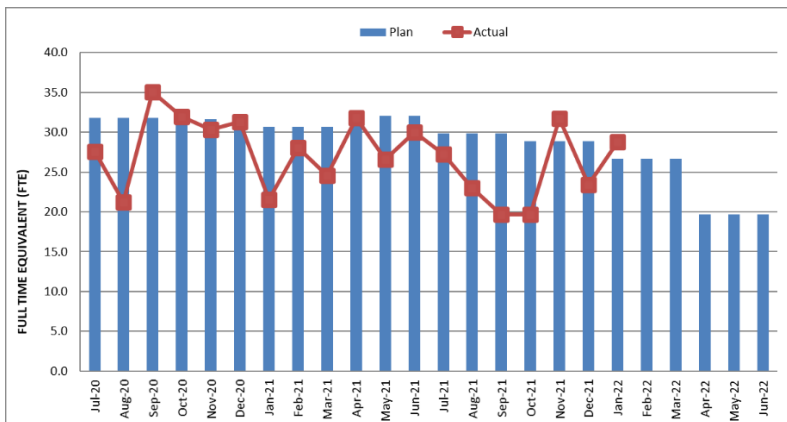
The opposing graphs represent planned vs. actual staffing levels by group.

Metro staffing includes full-time staff located in the IPMO as well as part-time support located at Gateway Headquarters.

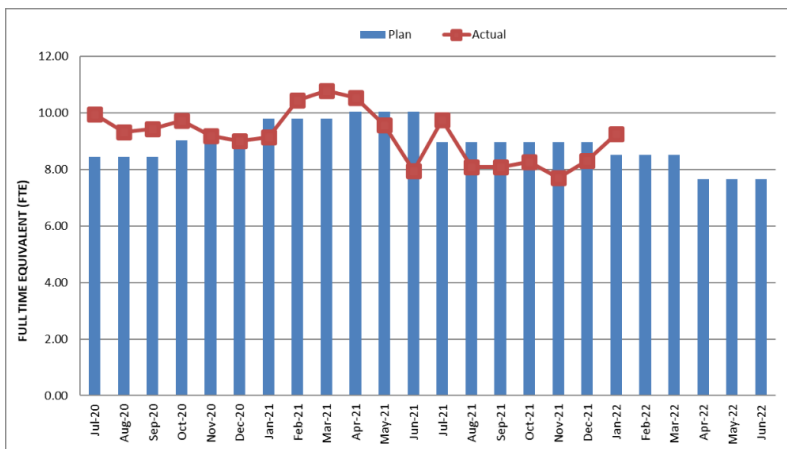
*The spike in charges was an anomaly that is being attended to.*

Staffing plans are developed for each fiscal year based on Project needs.

### CM Support Services Staff (Consultant)



### Engineering Services Staff (Consultant)



All above data through December 2021



## REAL ESTATE

### Open Real Estate Matters – Seven Parcels Remaining

#### City of Los Angeles (Mangrove Parcels)

- No further action required on this parcel until June 2022.

#### Department of Water and Power ‘Duco Yard’ – DWP (RC-473)

- The Purchase Agreement has been reviewed and accepted by Metro. The Chief Administrative Officer has approved the agreement; now pending LADWP Board approval. City Council approved the agreement in early May. The agreement has been signed, pending original to open escrow. Once escrow is opened LADWP will provide the executed deeds. Coordinating with LADWP on finalizing deed for execution.
- The Purchase and Sale Agreement with original signatures was received *and the Grant Deed has been fully executed by LACMAT Real Estate processing agreement and payment.*

#### 2nd and Hope

- City of Los Angeles Parcel - The City agreed to the transfer based on the City's and LACMTA's Memorandum of Agreement. The City finalized conveyance documents and is coordinating council action to approve. City approved the motion, LACMTA Real Estate coordinating with City of LA BOE on next steps to transfer property. The Project has approved the purchase price, Real Estate coordinating with City on transaction process. The City confirmed the property is subject to the Surplus Land Act. City staff is working on Council motion to declare property as exempt surplus property. Once the motion/declaration is approved, the City can proceed with transfer. *The City has received all City approvals and has forwarded the exempt surplus property request to Housing and Community Development for concurrence of the transfer.*
- The Public Works Committee to approve the exempt surplus property status in February, items will then go back to City Council by end of February for final approval.
- The GTK Way draft appraisal received, in review. Once reviewed, an offer of just compensation will be made to the City. *Appraisal received and will be presented to the City.*

## QUALITY ASSURANCE

Metro QA performed the following activities during the month of *February 2022*:

- Performed oversight verification of RCC's design and construction activities
- Reviewed and provided comments on RCC's Quality related submittals
- Attended daily meeting/briefing, CMSS personnel
- Reviewed test results for Portland Cement Concrete, Soils Testing, Asphalt Testing and Non-Destructive Testing of Welding
- Attended CQWP and "Readiness Review" meetings with RCC
- Attended Bi-Weekly Quality Review Meetings with RCC Quality Management
- *There were no surveillances nor non-conformance reports initiated by Metro during the period*
- *Metro accepted the disposition approved by the EOR, for NCR 0130 and it was closed on February 7, 2022.*
- *Audit #13 was initiated by Metro in February 2022 for water leaks project-wide.*
- *There is a total of six (6) Metro issued NCRs still pending resolution.*

As of *February 2022*, there have been a total of 135 NCRs issued; *seven (7)* remain open.

## ENVIRONMENTAL

Project holds bi-weekly coordination meeting between Metro and Contractor.

Stormwater Pollution Prevention Plan (SWPPP) inspections of active Project work areas are conducted weekly by RCC. Metro performs additional inspections and shares observations with RCC for corrective action. Metro receives copies of communication sent between field sites and QSP-designee related to observed deficiencies and corrective actions. Change of Information to extend construction end date in SMARTS under Water Board review.

Dewatering no longer required at Flower. Permit deactivation in process. Flowmeter at Broadway moved to track level from surface.

Noise and vibration spot checks continue to be conducted weekly at multiple sensitive locations and at locations of new activities along the alignment. RCC conducted weekly monitoring at active construction sites or when work and/or equipment changed. In addition, noise and vibration monitoring was conducted continuously and data was gathered in an online system. RCC also provided a weekly compliance report.

There have been inquiries relevant to environmental compliance from stakeholders adjacent to the future Grand Av Arts/Bunker Hill Station; however, Metro/RCC's Community Relations continue to be responsive and actively address community concerns in coordination with Area Leads, Resident Engineers, and field staff with respect to each construction site.

No historic period features were encountered in *February 2022*.

## CONSTRUCTION AND COMMUNITY RELATIONS

### Construction Relations

- Responded and addressed Project related inquiries from the public received via the hotline, and email. The Little Tokyo Community Office remains closed due to the COVID-19 pandemic.
- Distributed 12 construction notices to the public on various social media outlets. These notices were related to activities throughout the alignment to include concrete placement, utility work, geotechnical instrumentation maintenance, civil improvements activities, and soil backfill. Rail integration: ongoing service interruption and new service route for the L Line bus bridge shuttle.
- Coordinated and provided updates on construction activities with *over 120* stakeholders throughout the alignment.
- Presented virtually at *eight* community organization *and* homeowner organizations on planned activities and the status of the project: *LTCC, ADLTNC, and Go Little Tokyo Marketing & Advertisement Committee, The Promenade Homeowners Association, The Emerson, and Bunker Hill Tower, Skye at Bunker Hill, and 255 Grand Towers.*
- Continued briefings with: LA City Council District 14, and the Mayor's Office.

### Eat, Shop, Play – Construction Impact Business Mitigation Program Highlights

Promoted *four* businesses near the Project's alignment on social media posts, and e-newsletters: Library Store, *Prime Pizza, Kagura, and Leola Lace.*

## CREATIVE SERVICES

### Art Program

- *Reviewed RFIs and submittals for glass, mosaic, and porcelain enamel steel artworks.*
- *Led artist procurements for rotating lightbox and station entry glass artworks.*
- *Provided review of porcelain enamel steel installation with RCC.*
- *Provided review of art glass panels with RCC.*
- *Reviewed glass mosaic, porcelain enamel steel artwork and art glass submittals.*
- *Reviewed Atomic Cafe Interpretive Graphic Display Mitigation submittals.*
- *Continued assessment of Project operating impacts to signage systemwide.*



Art Glass Panel Review

## SAFETY & SECURITY

### C0980 Regional Connector

- In response to the COVID-19 pandemic, Project Safety Management continued to monitor compliance by RCC and IPMO staff with Federal, State, and City requirements for 'Essential Workers' on 'Critical Infrastructure' projects.
- Monitored RCC's pre-employment drug/alcohol testing and new employee safety orientation to ensure compliance with contract specifications.
- Conducted Project Safety Orientation for new Metro/Consultants and IPMO project staff. Training sessions included Safety Orientation, Underground Safety, and Self Rescuer Training.
- Participated in work plan reviews, daily crew safety meetings, and the RCC 'Safety Stand Down' sessions.
- Monitored construction field activities daily to ensure compliance with contract specifications. Participated with RCC staff in field safety inspection walks of multiple project worksites, laydown areas, and storage yards.
- Monitored Third Party contractor's work activities to ensure safety compliance.

### Project Safety Record

- RCC reported no Recordable Injuries in the month of *February 2022*.
- RCC reported 149,328 work hours for *January 2022*. RCC's total Contract to Date work hours through *January 2022* are 5,900,000 with a total of 23 Recordable Injuries and no Lost Workday (Days Away) case injuries. The C0980 Contract Recordable Injury Rate is 0.78. The Bureau of Labor Statistics reports that the National Average Recordable Injury Rate is 2.4 for heavy civil construction projects.
- Total Contractors' Project to Date Work Hours, including both the C0980 and the completed C0981 AUR contract, through *January 2022* is 6,011,059 hours with 24 recordable injuries. The Total Project Contractor Recordable Injury Rate is 0.80.
- Total Aggregate Project work hours for Contractors, Metro, and Support Services Consultants, through *January 2022* is 7,034,536 with 25 Recordable Injuries and no Lost Workday (Days Away) injury cases. The Total Project Aggregate Safety Rate is 0.71.\*

---

\* Using RIR method of calculating.

## APPENDIX CHRONOLOGY OF EVENTS

June 2007	Began Alternatives Analysis study
January 2009	Board approval of Alternatives Analysis study and next phase
February 2009	Began Draft Environmental Impact Statement / Report (EIS / EIR)
October 2010	Board approval of Draft EIS / EIR and selection of locally preferred alternative
January 2011	FTA approval to Enter into Preliminary Engineering
January 2011	Began Preliminary Engineering
August 2011	Board authorized to solicit major D/B contract C0980
October 2011	Issued RFQs for D/B contract C0980
December 2011	Began Real Estate Acquisition
March 2012	Completed PE and began Advanced PE
April 2012	Board certification of Final EIS / EIR and adoption of project
April 2012	Began Final Design - Advanced Utility Relocations (AUR)
June 2012	FTA Record of Decision
August 2012	Issued RFQs for D/B contract C0980
January 2013	Issued RFPs for D/Build contract C0980
March 2013	Completed Final Design - Advanced Utilities Relocation (AUR)
May 2013	NTP for Construction Management Services contract MC070
June 2013	Beginning of AUR contract C0981R Bid Period
July 2013	Submitted TIFIA loan application
July 2013	Submitted first draft FFGA application to FTA for review

September 2013	Received proposals for D/B Contract C0980
September 2013	Submitted second draft FFGA application to FTA, incorporating FTA comments
October 2013	Submitted Application to FTA Requesting an FFGA
November 2013	Started Emergency Generator Replacement Tank at 2nd Street and Historic Broadway Station (LA Times Building)
December 2013	Issued "Notice of Intent to Award" letter to contract C0981R contractor Pulice Construction Inc.
January 2014	Awarded AUR contract C0981R to Pulice Construction Inc.
February 2014	Issued Notice to Proceed for AUR Contract C0981R
February 2014	FTA issued Full Funding Grant Agreement to Metro
March 2014	Issued Amendment # 11 for D/B Contract C0980
March 2014	Started Survey for AUR Contract C0981R
April 2014	Metro Board approved the award of D/B Contract C0980 and established a LOP Budget
May 2014	Awarded D/B Contract C0980 to Regional Connector Constructors, Joint Venture
June 2014	Obtained possession of the Mangrove property from the City of Los Angeles
July 2014	Issued Notice to Proceed for D/B contract C0980
August 2014	C0980 D/B Contractor (RCC) began Final Design
September 2014	Metro performed the ground-breaking ceremony for C0980 D/B Contract
October 2014	EN077 Contractor, Arcadis, removed the underground storage tank at LA Times Parking Lot
November 2014	C0981R AUR Contractor completed DWP power work at 1st St. and Alameda
December 2014	Metro completed Field Vibration Testing for existing Expo and Gold Lines
January 2015	Demolish Buildings at 1st/Central Station
February 2015	Metro approved the Baseline Schedule for C0980 D/B Contract



March 2015	RCC started Historic Broadway Station Site Move-In
April 2015	Metro terminated C0981R Contract for convenience
May 2015	RCC started pile installation at Mangrove Launch Pit
June 2015	RCC started decking for shoofly bridge (Pile Cap & Grade Beam)
July 2015	DWP Water started installing 36" Water Valve at Alameda St.
August 2015	RCC completed DWP Power work at Flower & 5th Street
September 2015	RCC started Phase 2 DWP Power Relocation work at Broadway (Behind K Rail).
October 2015	RCC started pile installation at 1st/Central Station
November 2015	RCC completed Central Ave Full Closure (Pile & Decking)
December 2015	Metro Board approved the increase (\$131.8M) of the Project LOP Budget to \$1,589.9 million.
January 2016	RCC began implementation of Bus Bridge # 1 (Shoofly Tie-In Work at Little Tokyo).
February 2016	RCC began implementation of full closure at 2nd/Broadway intersection.
March 2016	RCC completed Bus Bridge # 1 (Shoofly Tie-In at Little Tokyo) work.
March 2016	Excavation of 1st/Central Station was initiated.
April 2016	TBM (Tunnel Boring Machine) was delivered to the temporary storage site.
May 2016	Closed 1st Street between Alameda and Central Streets. Opened northbound 1st East of Alameda Street.
June 2016	RCC completed excavation at 1st/Central Station Box
June 2016	RCC began pile installation on west side of Flower Street between 4th and 5th Street
July 2016	RCC initiated pile installation at Historic Broadway Station (West Hammer Head)
July 2016	RCC Initiated CIP invert at 1st/Central Station Box
August 2016	RCC completed 36" waterline replacement at 1st/Alameda

September 2016	RCC completed temporary decking at 1st/Alameda intersection (Wye)
October 2016	Metro performed TBM lowering ceremony
October 2016	RCC completed CIP invert at 1st/Central Station Box
November 2016	RCC completed CIP invert at Mangrove Launch Pit and Wye
December 2016	RCC completed Phase 1, 2nd Street Decking in front of LA Times Bldg.
January 2017	Metro Board approved a LOP Budget increase
February 2017	RCC initiated TBM mining (1st – Left)
March 2017	RCC completed TBM mining under JVP (first 500 ft.)
March 2017	RCC completed temporary decking on Flower St. (between 4th and 5th)
April 2017	RCC completed sub-invert at TBM retrieval pit
April 2017	RCC completed CIP invert at Grand Av Arts/Bunker Hill Station Box
May 2017	RCC completed temporary decking at Historic Broadway Station
May 2017	RCC completed water relocation work along Flower Street
June 2017	RCC completed mining and broke through at Grand Av Arts/Bunker Hill Station
June 2017	Five-month full closure of 6th Street approved by LADOT, Caltrans and LADWP
July 2017	RCC completed TBM mining of the first tunnel
August 2017	RCC extracted TBM shields from the Retrieval Shaft
September 2017	RCC began TBM mining of the second tunnel (right)
October 2017	RCC completed TBM mining under JVP (first 500 ft.)
October 2017	RCC completed temporary decking on Flower St. (between 5th and 6th, deck beam 16 to deck beam 58)
November 2017	Completed five-month full closure of 6th Street

November 2017	Initiated underpinning related to the Historic Broadway Station
December 2017	RCC completed mining and broke through at Grand Av Arts/Bunker Hill Station (Right Tunnel)
January 2018	RCC completed TBM mining of the second tunnel (right)
February 2018	RCC began excavation of cross passages
February 2018	RCC began SEM canopy pipe installation
March 2018	RCC began tunnel invert concrete
March 2018	RCC completed infrastructure for power relocation work at 6th/Flower
April 2018	RCC completed entrance structure excavation of Historic Broadway Station
May 2018	RCC began SEM excavation
June 2018	LADWP Power completed cable pulling at 6th/Flower
June 2018	Completed underpinning related to the Historic Broadway Station
July 2018	RCC completed station box excavation of Historic Broadway Station
August 2018	Completed entrance structure invert of Historic Broadway Station
September 2018	Completed temporary decking of Flower Street
October 2018	RCC started the CN 106.2 Final Design of the Revised Cable Transmission System for the Gold Line
October 2018	Metro completed approval of floating slab test results
October 2018	RCC completed SEM left drift excavation
October 2018	RCC completed Trainway Feeder duct bank at Flower St & 7th St
November 2018	RCC completed Little Tokyo / Arts District Station Box Excavation
November 2018	RCC completed Grand Av Arts/Bunker Hill Station East Platform Level Exterior Walls
December 2018	RCC completed SEM right drift excavation

December 2018	RCC completed the Historic Broadway Station west invert
December 2018	RCC started tunnel walkways between the future Little Tokyo/Arts District Station to Historic Broadway Station
December 2018	RCC started the future Little Tokyo/Arts District Station east invert
December 2018	RCC completed Grand Av Arts/Bunker Hill Station mezzanine concrete
January 2019	RCC completed Grand Av Arts/Bunker Hill Station invert concrete
January 2019	RCC completed SEM center top drift excavation.
January 2019	RCC started Little Tokyo/Arts District Station west cable pit and sump pit
February 2019	RCC completed SEM excavation
February 2019	RCC completed platform level exterior walls at Grand Av Arts/Bunker Hill Station
February 2019	RCC started fire protection in tunnels
March 2019	RCC completed Little Tokyo/Arts District Station invert concrete
March 2019	RCC completed Bored Tunnels walkway concrete
April 2019	RCC completed Grand Av Arts/Bunker Hill Station east concourse deck concrete
April 2019	RCC completed 1st Street Cut & Cover / U-Channel Level 1 excavation
May 2019	RCC completed North Flower Cut & Cover tunnel invert concrete
May 2019	RCC completed Wye Cut & Cover tunnel invert concrete
June 2019	RCC completed Right Tunnel floating slab curb
July 2019	RCC completed Left Tunnel floating slab curb
July 2019	RCC completed SEM Cavern concrete invert
August 2019	RCC completed 7th Street / Metro Center Wall Demolition
August 2019	RCC completed the Historic Broadway Station West Concourse Deck

September 2019	RCC completed Historic Broadway Station east invert
September 2019	RCC completed South Flower Cut & Cover tunnel excavation
October 2019	RCC completed Wye Tunnel Cut & Cover walls
October 2019	RCC completed Grand Av Arts/Bunker Hill Station concourse walls
November 2019	RCC completed Wye Tunnel Cut & Cover Roof Deck
November 2019	RCC completed SEM Cavern Exterior Walls
December 2019	RCC completed Little Tokyo/Arts District Station plenum deck concrete
January 2020	RCC completed SEM Cavern Interior Walls
January 2020	RCC completed 1st Street Tunnel Cut & Cover Roof Deck
February 2020	RCC completed Wye Cut & Cover Tunnel Pin Pile Removal
February 2020	RCC completed Grand Av Arts/Bunker Hill Station platform walls
March 2020	RCC completed Grand Av Arts/Bunker Hill Station lower ancillary level walls
March 2020	RCC completed SEM plenum deck
April 2020	RCC completed Historic Broadway Station west concourse exterior walls
April 2020	RCC completed Historic Broadway Station concourse deck
May 2020	RCC completed SEM Cavern Arch Walls
May 2020	RCC completed Grand Av Arts/Bunker Hill Station upper ancillary level walls
May 2020	RCC completed South Flower Cut & Cover invert
June 2020	RCC completed fabrication pre-cast floating slabs
June 2020	RCC completed North Flower Cut & Cover roof deck
July 2020	RCC completed Historic Broadway Station entrance concourse level walls

July 2020	RCC completed installation pre-cast floating slabs
August 2020	RCC completed Wye backfill, deck removal and paving
September 2020	RCC completed Grand Av Arts/Bunker Hill Station upper roof deck
September 2020	RCC completed Little Tokyo/Arts District Station ancillary walls
September 2020	TIFIA loan paid off and account closed
October 2020	RCC completed Gold Line Communications Relocation Cutover
October 2020	RCC completed Flower Cut & Cover Tunnel roof deck
November 2020	RCC completed Little Tokyo/Arts District Station ancillary roof deck
November 2020	RCC completed Grand Av Arts/Bunker Hill Station ES1/ES2 walls
December 2020	RCC completed delivery of rail stockpile to Flower Cut & Cover
December 2020	RCC completed demolition of the Little Tokyo/Arts District Station
January 2021	RCC completed Historic Broadway Station box roof deck
January 2021	RCC completed Alameda MSE Wall demolition
February 2021	RCC completed Flower Tunnel Wet Standpipe
February 2021	RCC completed Flower Tunnel Emergency Walkways
March 2021	RCC completed Historic Broadway Station Entrance Roof Deck
April 2021	RCC completed Little Tokyo/Arts District Station West Tunnel Vent excavation
May 2021	RCC completed Grand Av Arts/Bunker Hill Station Upper Plaza Deck
June 2021	RCC completed Little Tokyo/Arts District Station East Tunnel Vent structure
June 2021	Regional Connector received \$59.23M American Rescue Plan Act of 2021
July 2021	RCC completed Historic Broadway Station East Tunnel Vent Shaft Excavation
July 2021	Completed deck removal on Flower Street.

August 2021	RCC completed Little Tokyo/Arts District Station Track Installation
August 2021	RCC completed Grand Av Arts/Bunker Hill Station PS3 stair structure.
September 2021	RCC completed Flower Street emergency exit stair structure.
September 2021	RCC completed Train Control Installation from 7th/Metro Center Station to Historic Broadway Station.
September 2021	RCC completed Platform Edge Paver Installation Grand Av Arts/Bunker Hill Station.
October 2021	RCC completed West Vent Plenum at Historic Broadway Station.
October 2021	RCC completed roof deck at the Wye Fan Plant.
November 2021	RCC completed track installation at 1 <sup>st</sup> Street Guideway.
November 2021	RCC completed MSE Walls at Alameda Guideway.
December 2021	RCC completed LVT Track Installation at Alameda Guideway.
December 2021	RCC completed Vent Shaft at Wye Fan Plant.
<i>January 2022</i>	<i>RCC completed OCR 7<sup>th</sup>/Metro Center to Wye.</i>
<i>February 2022</i>	<i>RCC completed East Vent Plenum at Historic Broadway Station.</i>