



Metro

Metropolitan Transportation Authority

One Gateway Plaza
Los Angeles, CA 90012-2952

213.922.2000 Tel
metro.net

August 22, 2022

TO: Distribution

FROM: Mat Antonelli 
Project Manager

SUBJECT: Regional Connector Transit Project
July 2022 Monthly Project Status Report

Enclosed is the Monthly Project Status Report for the Regional Connector Transit Project. This report contains the Los Angeles County Metropolitan Transportation Authority's (LACMTA) representation of the Regional Connector Transit Project status for the period ending July 29, 2022.

If you have any questions regarding this report or its supporting information, please contact Dan Estrada, Deputy Executive Officer of Program Control at (213) 893-7130.

Enclosure

Los Angeles County
Metropolitan Transportation Authority

Regional Connector Transit Project

MONTHLY PROJECT STATUS REPORT

July 2022



Metro

REGIONAL CONNECTOR TRANSIT PROJECT

MONTHLY PROJECT STATUS REPORT

THE PREPARATION OF THIS DOCUMENT HAS BEEN FINANCED IN PART THROUGH A GRANT FROM THE U. S. DEPARTMENT OF TRANSPORTATION, FEDERAL TRANSIT ADMINISTRATION (FTA).

July 2022

TABLE OF CONTENTS

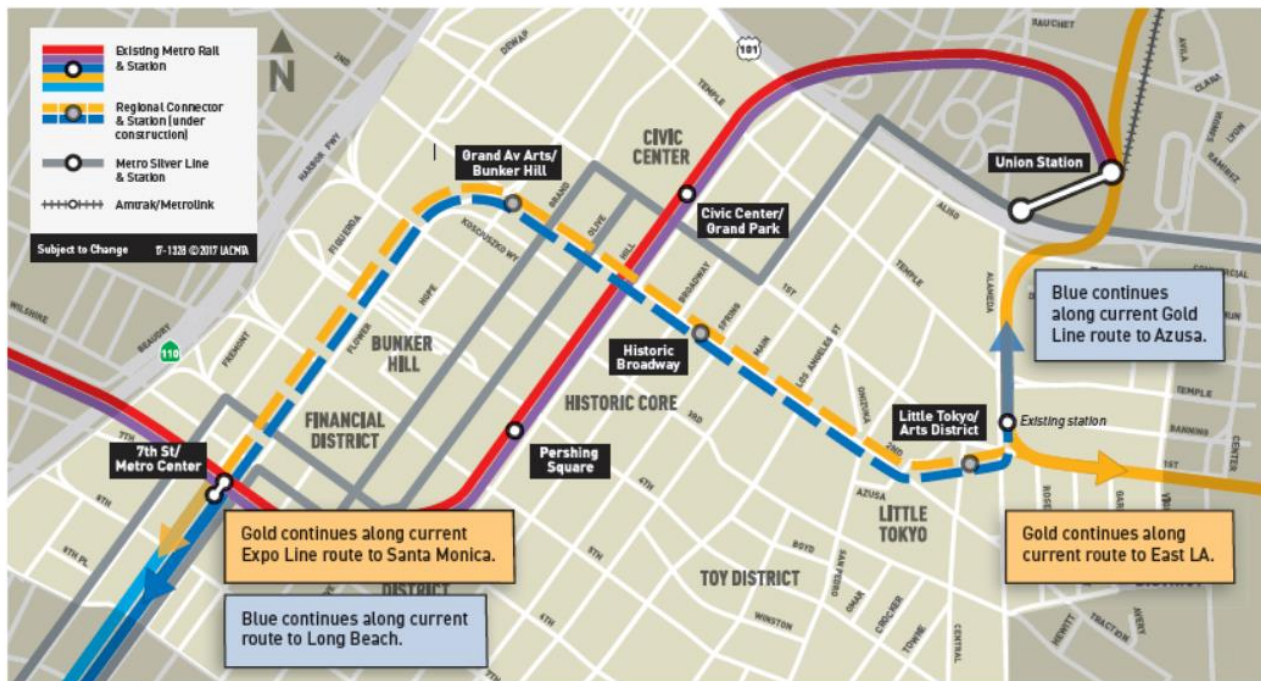
Project Overview	1
Executive Summary	5
Project Update	10
Project Schedule	10
Progress Summary.....	11
Planned vs. Actual Progress.....	11
Key Milestones Six-Month Look Ahead	12
Major Equipment Delivery.....	12
Project Cost.....	13
Project Cost Analysis.....	13
Cost Contingency Drawdown and Analysis	15
Summary of Contract Modifications.....	16
Disadvantaged Business Enterprise (DBE)	17
Project Labor Agreement	17
Financial/Grant	18
Project Staffing.....	19
Real Estate	21
Quality Assurance.....	22
Environmental	23
Construction and Community Relations.....	24
Creative Services	25
Safety and Security	26
Appendix.....	27
Chronology of Events	

PROJECT OVERVIEW

Project Background

The Regional Connector Transit Project (Project) will link the terminus of the Blue and Expo Lines at 7th/Metro Center to the Gold Line at a new underground Little Tokyo/Arts District Station through a new 1.9-mile underground alignment in downtown Los Angeles. The alignment includes two other underground stations: Grand Av Arts/Bunker Hill; Historic Broadway.

From the existing 7th Street/Metro Center Station, the Project alignment will extend north under Flower Street to 2nd Street. It will then proceed east underneath 2nd Street to just west of Central Avenue where the alignment will veer northeast under privately held property to the new Little Tokyo/Arts District Station at 1st and Central. The alignment continues briefly eastward through a Wye Junction (Wye) constructed beneath the 1st and Alameda intersection. To the north of the Wye at Temple and Alameda, and to the east of the Wye at 1st and Vignes, trains will connect with the Gold Line by rising to the surface through two new transition portals heading north to Pasadena, and east to East Los Angeles.



Upon completion, the Project will in effect facilitate regional light rail service along a 49-mile north-south route – Azusa to Long Beach, and a 23-mile east-west route – East LA to Santa Monica.

Passenger forecasts in 2035, as a result of the improved service, indicate 90,000 daily transit trips will occur through the 1.9-mile downtown trunk, including 17,000 new riders.

The above Project configuration is based on years of planning and environmental work that is reflected in the following milestones:

- Metro Board approval of Alternative Analysis – January 2009
- Initiation of Draft EIS/EIR – February 2009
- Initiation of Preliminary Engineering (PE) – January 2011
- Metro Board certification of Final EIS/EIR – April 2012
- FTA issuance of Record of Decision – June 2012
- PE and Advanced PE complete – March 2013
- FTA award of Full Funding Grant Agreement – February 2014.

Major Procurements

Utility Relocation: Advanced Utility Relocation Contract C0981R was awarded to Pulice Construction, Inc. in January 2014, and the Notice to Proceed (NTP) issued on February 18, 2014. Contract C0981R was terminated for convenience on April 14, 2015, and remaining AUR work was transferred to the C0980 Design/Build (D/B) Contractor.

Guideway & Systems Contract: The Board authorized to solicit a major D/B contract, C0980, in August 2011. A contract was awarded on April 24, 2014, to Regional Connector Constructors (RCC), a joint venture of Skanska USA Civil West California District, Inc. and Traylor Brothers, Inc. in the amount of \$927,226,995. NTP was issued July 7, 2014. The final engineering and design for the joint venture was performed by Mott McDonald.

Vehicles: Metro procured four (4) Light Rail Vehicles (LRVs) for the Project. The vehicles were built and delivered by Kinkisharyo International, LLC under Option 2 of Contract P3010. Delivery and acceptance of four LRVs occurred late 2020.

Rail Operations Center (ROC): The existing functional operations at the ROC are being expanded to accommodate the central control functions associated with five new rail lines to include Regional Connector. The Project is contributing \$4.4M towards this expansion (representing a \$400k forecast increase in May 2021). The ROC expansion is scheduled to be ready for Regional Connector in *Fall 2022*.

Fare Collection: Procurement of Universal Fare System and Ticket Vending Machine (TVM) equipment was completed in January 2018 with award to Cubic Corporation. All equipment has been manufactured and is in storage locally awaiting access to stations for installation and testing. Metro, together with Cubic, are coordinating with RCC for installation windows to initiate TVM's at all stations, which are now expected to begin in July 2022.

Program Management

The RCC contract is being managed by a team of Metro and consultant personnel jointly located at the Integrated Project Management Office (IPMO). The consultant component is comprised of The Connector Partnership, a joint venture between AECOM, Inc. and WSP (CPJV) which provides engineering and design support services while Arcadis, Inc., provides construction management support services. An overview of management staffing of these consultants is provided under the Staffing Section of this report. The on-site program management team is also supported by Metro Headquarters resources to include, but not limited to, engineering, risk management, environmental, quality management, operations, and creative services departments.

Project Schedule and Budget: The Revenue Service Date (RSD) is planned for Fall 2022.

In January 2017, the Metro Board revised the Life of Project (LOP) Budget for Regional Connector Transit Project 860228 to \$1.756 billion. The LOP budget for Concurrent Non-FFGA activities related to Project 861228 was increased to \$59.4 million in January 2021. Financing costs are estimated at \$14M. A detailed FFGA budget forecast is included under the Project Cost Section of this report.

Funding has been secured from a variety of sources, detailed in the Financial/Grant Section on Page 18, to include:

- Federal American Rescue Plan Act
- Federal New Starts Grant
- Federal Congestion Management Air Quality and RIP Programs
- State Proposition 1A/1B and Capital Project Loan proceeds
- City of Los Angeles
- Lease revenues.

Construction and Community Relations: The Construction and Community Relations Team is tasked with promoting the Project and performing public outreach within the communities to keep stakeholders informed of construction activities occurring along the Project alignment. To facilitate the communication, community leadership councils have been formed which represent geographic-based constituent groups along the alignment.

The Project is also engaged in social media outreach and various marketing and advertising efforts designed to keep the public informed and supportive of the Project. These efforts are aimed at promoting businesses that are affected by construction. An overview of monthly activities is presented in the Construction and Community Relations Section on Page 24.

System Integration: The Project's integration of three separate lines, each possessing distinct system technologies, presents significant challenges for both the Project and Metro at-large. Extensive planning has been required to define logistics of the systems' cut overs that will be required. The Project has completed the systems interface design, installation of devices and systems, as well as testing as Metro maintained revenue service on the three operating lines. All cut-overs have been successfully completed thus marking passage of a major risk that was actively managed for many months.

Rail Activation: The Project and Metro Operations recognize the extensive planning required in preparation for rail activation of the new regional light rail service the Project will enable through downtown Los Angeles. The training of 400+ operators and supervisors across the region has surfaced as a key component to rail activation. This training will require dedicated time during rail activation to ensure safety.

Planning efforts outlined a sequence of dependent testing, training, simulation, and safety certification. *These activities have started with broad testing of systems designed to safely run trains and begin training of operators and first responders and emergency services. Continuing* reviews of each element leading to start-up continues. Interface between Project Management, Operations, Fire Life Safety, Safety and Security, and Communications representatives are intensifying to ensure an integrated and timely approach is realized.

EXECUTIVE SUMMARY

As of *July 31, 2022*, the Project achieved *96.1%* completion based on earned value measurements for design and construction. The focus of the Project is to continue with systems installations and testing, station finishes, architectural concrete, and installation of artwork at stations while street and station restorations proceed at the surface. The following is an overview of current activities.

Design Status

While design has been completed, efforts directed toward final RFIs continue to ensure consistent and appropriate handling of field questions and issues.

Construction Status

1st Street Cut & Cover Tunnel & U-Channel: Continued communication *device* installation.

Wye Structure: Completed electrical wiring and terminations for Emergency Ventilation Fans at the Wye Fan Plant. *Continued the communications installation at the Wye Disconnect Room and Wye Fan Plant.*

Alameda Street Cut & Cover Tunnel & U-Channel: Continued *final* communication *device* installations. *Completed steel picket fence installation.*

Little Tokyo/Arts District Station: In the station box, *continued* metal ceiling panels, granite stairs, mechanical/electrical/ plumbing installations, elevator installations at PL1 and PL2, cladding, and communications installation. In the lower ancillary, continued emergency exit handrail installations, hollow metal door installations, and mechanical/ electrical/plumbing installations. In the upper ancillary, *completed hollow metal door installations. Continued* emergency exit handrail installations, and mechanical/electrical/plumbing installations. Continued the installation of Communications cable terminations in the TC&C Room. In the Plaza area, completed *pedestrian light pole bases and poles, portal structural steel and hollow metal doors.* Continued drainage pipe and catch *basins*, colored concrete paving, and concrete planter *installations. Started, mechanical/electrical/plumbing, granite paving, cladding, and communication* installations.

Reach 1 Tunnels Section (Little Tokyo/Arts District Station to Crossover Cavern): Continued communications installations.

Historic Broadway Station: At the platform level, completed *granite paving*, and mechanical/electrical/plumbing installations. *Continued* cladding, communications, and PL #3 and #4 elevator installations. At the concourse level, *continued special colored concrete paving*, hollow metal doors, metal ceiling panels, the mechanical/electrical/plumbing installations, and communications cable terminations in the TC&C Room.

Started *elevator enclosure glazing* installation. At the Ancillary level, *completed hollow metal doors, special concrete paving, and roll-up door*. Continued mechanical/electrical/plumbing and *porcelain tile* installations. At the plaza level, completed station backfill, *and canopy structural steel* installation. Continued metal stud framing, utility relocations and street restoration. *Started canopy outrigger installation*.

Reach 2 Tunnel Section (Historic Broadway Station to Grand Av Arts/Bunker Hill Station):
Continued communications installations.

Grand Av Arts/Bunker Hill Station: At the platform level, completed *fire hose cabinets* installations. Continued communications, mechanical/electrical/plumbing, cladding and the PL7 | PL8 elevator installation. At the concourse level, completed *special concrete paving, hollow metal doors* installation. Continued the installation of PL 1-6 elevators, *porcelain tile, mechanical/electrical/plumbing, and communications* installation. At the lower and upper ancillary levels, completed *roll-up doors*. At the upper roof level, *continued metal grate installations*. At the Plaza, *completed portal structural steel*. Continued *metal cladding installation, mechanical/electrical/plumbing, and special concrete paving*. Started *portal metal stud framing*. At the Upper Plaza, continued the installation of steel shoes (barrier glazing), metal cladding and glazing installation at PL 1-6 elevator hoistways. At Northbound Flower Street, Hope Street and 2nd Place, continued street restoration.

Flower Cut & Cover Tunnel: Continued communications installations. *Started sliding door installations*.

Schedule Summary

The Project did not achieve Milestone 1.1 as planned. An assortment of delays preventing the safe turnover of the guideway throughout the alignment dictated that the milestone be deferred. *Substantial Completion 1.1 was completed June 27, 2022. It acknowledged completion of the guideway, station platforms, traction power, and train control systems throughout the alignment.*

The milestone facilitates Metro Operations to proceed with its SIT-2 testing and Rail Activation. Operation-led testing, training, and rail activation are gaining momentum with growing involvement of Metro Operations from other Departments as well.

Redefinition of Substantial Completion Milestone 1.2 *now includes the balance of SIT-1 testing. These tests will demonstrate the safe functionality of the control systems for full turnover of the Project to Metro Operations.*

A third milestone (1.3) will capture the balance of station finishes and street level restorations that are separate from operational testing, training, and safety certification.

The Project continues to target a Revenue Service Date in late Fall 2022.

Costs Summary

Project costs continue to track narrowly within budget. To date, the design and construction changes related to base scope represent 9.0% of the contract value. There is one notice of intent to claim by RCC. The notice relates to Historic Broadway Station SOE stability issues. Detailed cost and budget information begins on Page 13.

Coronavirus Impacts

It remains unclear as to what extent the Coronavirus (COVID-19) has impacted the Project. RCC has notified Metro of work inefficiencies through a formal Request for Change (RFC), *however*, delivery of supporting evidence and analysis has not been made. While RCC asserts impacts to material supply chains, especially related to stainless steel, special trackwork, conduit deliveries, and electrical equipment have occurred leading to subsequent delays to installations and with testing for a net unmitigated impact of 214 days. Metro continues to review the situation while working with RCC to mitigate the situation on as many fronts as practical.

RCC continues to follow local, state, and federal regulations related to COVID-19 to maintain operations.

Key Management Concerns

Item 1: Rail Activation for integrating three transit lines is complex. All technical challenges are more difficult when the logistics of maintaining service are required while changes are put into play. Through collaboration among stakeholders, successful planning, and execution of cut-overs at all three stations have progressed safely.

Status/Action: Cut-overs at all three (3) locations have been installed, tested, and set to final operational parameters.

Item 2: *RCC has not been able to keep pace with the systems testing requirements due to several recurring issues including: technical trouble shooting of existing systems; troubleshooting integration of new and existing systems interfaces; insufficient joint-venture and or subcontractor resources; limited track allocation access; limited Metro operational resources resulting from emergencies elsewhere in the network; etc. The stacking of tests has mounted as productivity has declined. The probability of holding to interim progress targets is likewise declining.*

Status/Action: RCC have re-sequenced all remaining activities with status reviewed weekly together with Metro. Priorities are assigned with correlated planning and communication with Metro Operations. These communications look to maintain a coordinated three-part focus (Project, Operations, and RCC) on work needed to effectively progress. A fresh perspective on milestones is expected after monitoring this action plan.

Project Construction Photos



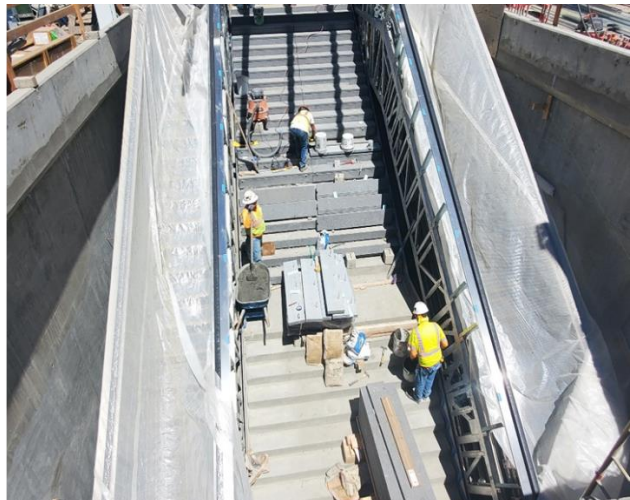
Curb and gutter at 1st Street corner



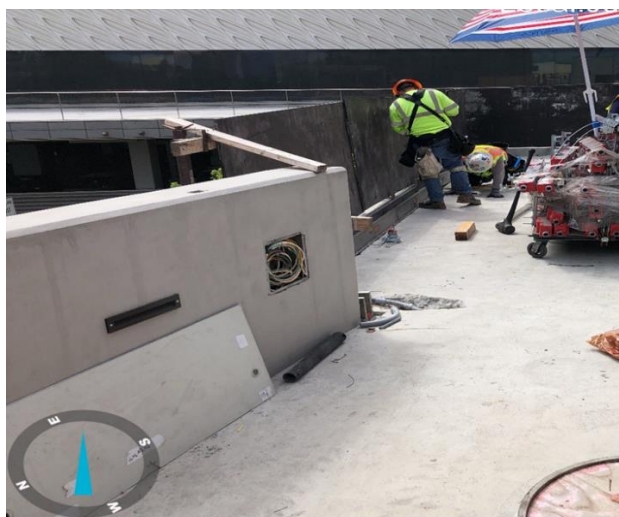
Station artwork in Little Tokyo/Arts District Station



2nd & Spring Street curb and gutter concrete placement



Installation of granite pavers at PS1 staircase at Historic Broadway Station



Stainless Steel Shoe Installation at Pedestrian Bridge at Grand Av Arts/Bunker Hill Station

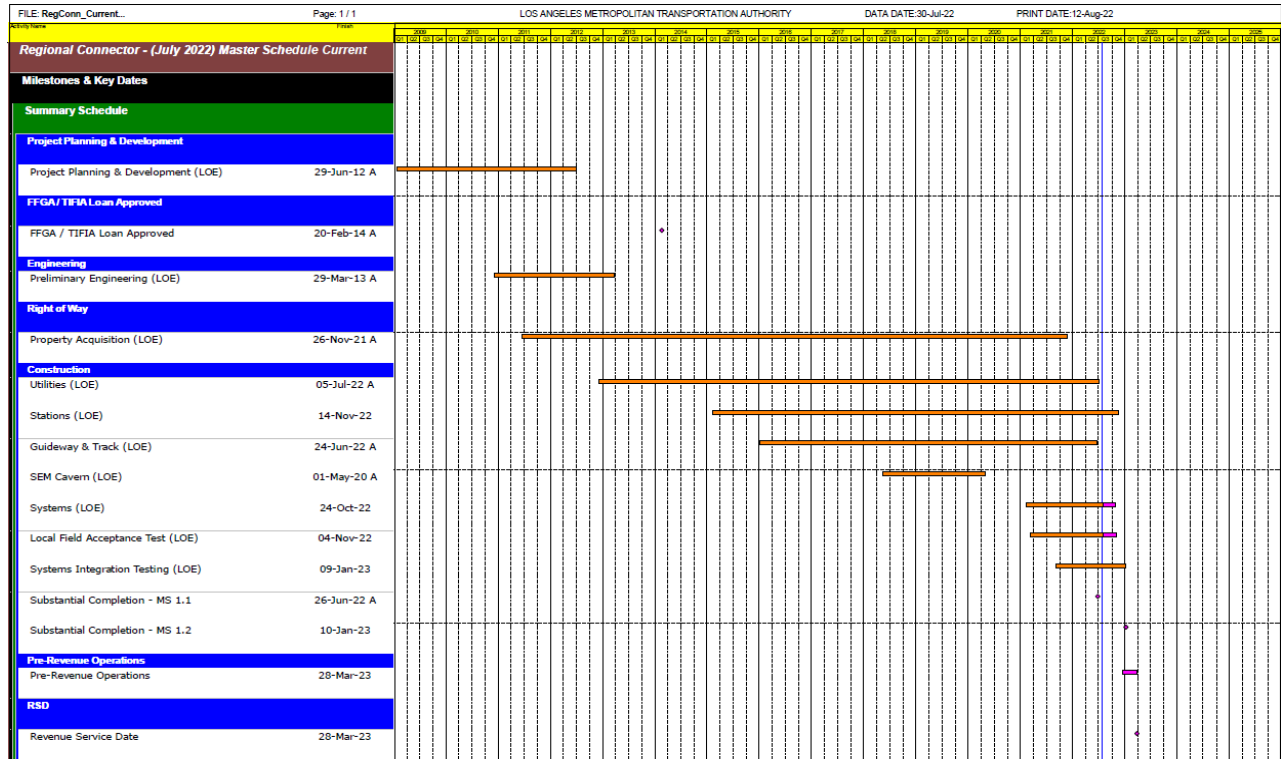


Formwork and rebar at Upper Plaza Pavilion at Grand Av Arts/Bunker Hill Station

PROJECT UPDATE

PROJECT SCHEDULE

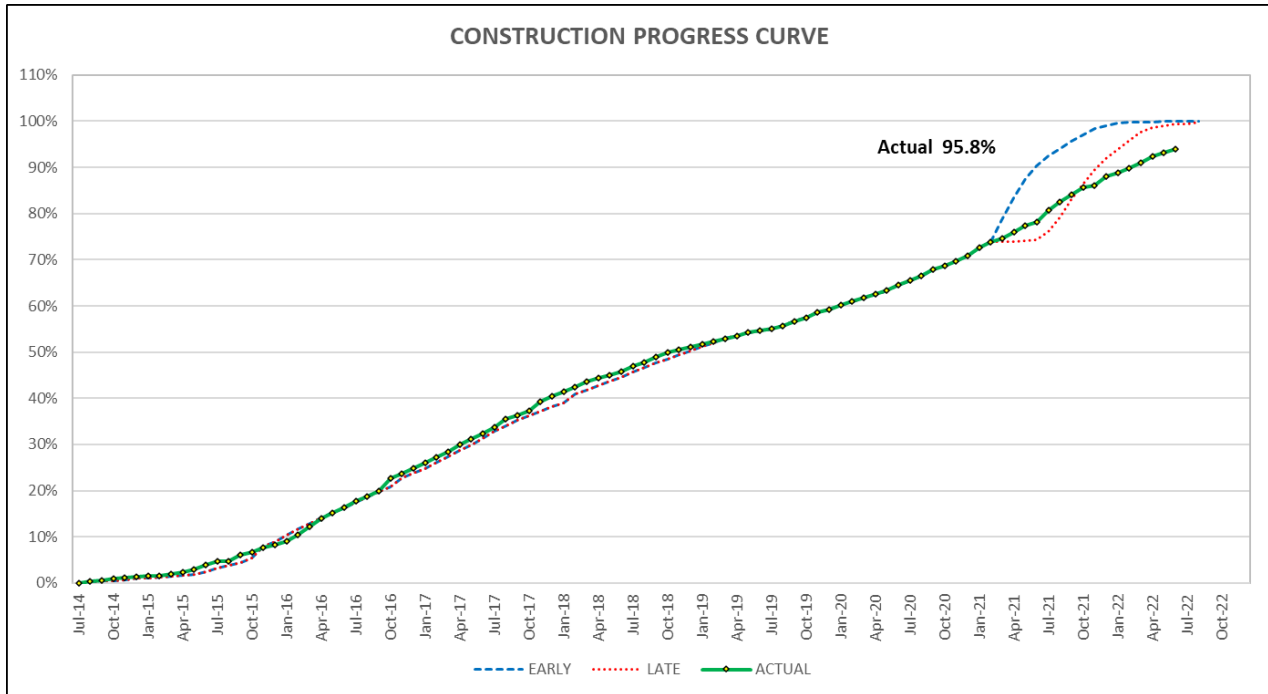
Project Summary Schedule (Unmitigated)



Progress Summary








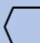
	Status	Change from Last Month	Comment
Forecast Revenue Service	Fall 2022	None	
Proposed FFGA Revenue Service	11/26/2023	None	
Final Design Progress:			
Contract C0980	100%	NA	
Construction Contracts Progress:			
Contract C0981R & C0980	95.8%	0.8%	

Note: Construction Progress excludes General Requirements, Construction and Design Mobilization, Final Design and Provisional Sum costs (Schedule C). Progress values include executed modifications and change orders.



Key Milestone Six-Month Look Ahead

	Milestone Date	Jul-22	Aug-22	Sep-22	Oct-22	Nov-22	Dec-22
Complete Plaza Canopy Steel at Historic Broadway Station	7/29/2022 A	⬡					
Complete Emergency Ventillation Fans at Wye Fan Plant	08/12/22		⬡				
Complete Plaza Concrete Paving at Little Tokyo / Art District Station	08/18/22		⬡				
Complete Plaza Concrete Paving at Historic Broadway Station	08/22/22		⬡				
Complete Escalators at Grand Ave / Bunker Hill Station	09/12/22			⬡			
Complete Stainless Steel Enclosures at Little Tokyo / Art District Station	09/12/22			⬡			
Complete Elevators at Grand Ave / Bunker Hill Station	10/13/22				⬡		
Complete Emergency Management Panel at Historic Broadway Station	10/24/22				⬡		
Complete Plaza Architectural Finishes at Grand Ave / Bunker Hill Station	10/28/22				⬡		
Complete Plaza Architectural Finishes at Little Tokyo / Art District Station	11/10/22					⬡	
Complete Fare Collection System Installation	12/15/22						⬡
Complete Systems Integration Testing - Phase 1	12/16/22						⬡

 MTA Staff	 MTA Board Action	 FTA (Federal Transit Administration)	 Utility Company
 Other Agencies	 Contractors	 Design Consultant	 C0980 D/B Contractor

Major Equipment Delivery

Metro Supplied Equipment

Equipment	Initial Procurement	Scheduled Delivery	Scheduled Installation
LRT Vehicles	(NTP) 08/20/2012 A	Option 2 12/31/2020 A	N/A
Ticket Vending Machines	~ 01/30/2018 A	07/08/19 A (warehoused)	08/2022 01/2023

PROJECT COST

Project Cost Analysis – 860228

REGIONAL CONNECTOR TRANSIT CORRIDOR PROJECT (860228)
COST REPORT
DOLLARS IN THOUSANDS

SCC CODE		FFGA BUDGET	ORIGINAL BUDGET	CURRENT BUDGET		COMMITMENTS		EXPENDITURES		CURRENT FORECAST		BUDGET/ FORECAST VARIANCE
				PERIOD	TO DATE	PERIOD	TO DATE	PERIOD	TO DATE	PERIOD	TO DATE	
10	GUIDEWAYS & TRACK ELEMENTS	280,622	204,691	0	272,628	0	274,435	1,057	271,960	34	273,004	376
20	STATIONS, STOPS, TERMINALS, INTERMODAL	354,268	219,477	0	239,321	0	238,085	8,487	214,510	0	238,780	-541
30	SUPPORT FACILITIES: YARDS, SHOPS, ADMIN, BLDGS	0	0	0	0	0	0	0	0	0	0	0
40	SITWORK & SPECIAL CONDITIONS	141,785	422,453	0	627,885	35	605,410	2,550	584,168	-3,254	651,490	23,606
50	SYSTEMS	69,667	73,848	0	76,452	0	70,056	2,444	61,696	50	75,021	-1,431
	CONSTRUCTION SUBTOTAL (10-50)	846,343	920,468	0	1,216,286	35	1,187,986	14,538	1,132,334	-3,170	1,238,296	22,009
60	ROW, LAND, EXISTING IMPROVEMENTS	115,889	74,208	0	59,946	0	57,862	0	57,840	0	61,397	1,451
70	VEHICLES	16,275	16,275	0	16,275	0	16,275	0	15,185	0	16,275	0
80	PROFESSIONAL SERVICES	261,455	257,973	0	404,158	9,869	388,727	1,747	367,837	-1,176	405,881	1,723
	SUBTOTAL (10-80)	1,239,963	1,268,925	0	1,696,666	9,904	1,650,851	16,285	1,573,196	-4,346	1,721,849	25,183
90	UNALLOCATED CONTINGENCY	135,399	126,892	0	32,675	0	0	0	0	-13,149	7,492	-25,183
100	FINANCE CHARGES	27,571	7,115	0	14,301	0	0	0	0	0	14,301	0
	TOTAL PROJECTS (10-100)	1,402,932	1,402,932	0	1,743,642	9,904	1,650,851	16,285	1,573,196	-17,495	1,743,642	0
	ENVIRONMENTAL/PLANNING - 400228		6,075	0	6,075	0	6,075	0	6,075	0	6,075	0
	ENVIRONMENTAL/PLANNING - 460228		18,125	0	20,425	0	20,425	0	18,988	0	20,425	0
	TOTAL PROJECTS (EVN/PLAN'G)		24,200	0	26,500	0	26,500	0	25,063	0	26,500	0
	TOTAL	1,402,932	1,427,132	0	1,770,142	9,904	1,677,350	16,285	1,598,259	-17,495	1,770,142	0

NOTE: EXPENDITURES ARE CUMULATIVE THROUGH JUL 2022.

METRO AND TRIBUNE AGREED ON REIMBURSEMENT OF ~\$1.6 MILLION RELATED TO 2ND/BROADWAY OVERBUILD.

Original Budget:

The Original Budget of \$1.427 billion reflects the April 2014 Board approved LOP Budget, plus finance costs of \$7.1 million.

Current Budget:

In January 2017, the Metro Board revised the LOP Budget for Project 860228 to \$1.756 billion to reflect *the* current and present Project scope. Finance costs, estimated at \$14.3 million, are also reflected leading to a total of \$1.770 billion.

Commitments:

Overall commitments increased by \$9.9 million this month to \$1.687 billion which represents 94.8% of the Current Budget.

Expenditures:

Expenditures are cumulative through *July* 2022 and increased by \$16.3 million this month for costs across the Project. One billion five hundred *ninety* million (\$1.59 billion) in expenditures to date represent 90.3% of the Current Budget.

Current Forecast:

The total current forecast *remains equal* to the total current budget at \$1,770 million. in

Project Cost Analysis – 861228

CONCURRENT NON-FFGA ACTIVITIES (861228)
PROJECT COST STATUS BY FTA SCC
DOLLARS IN THOUSANDS

SCC CODE		ORIGINAL BUDGET	CURRENT BUDGET		COMMITMENTS		EXPENDITURES		CURRENT FORECAST		BUDGET/ FORECAST VARIANCE
			PERIOD	TO DATE	PERIOD	TO DATE	PERIOD	TO DATE	PERIOD	TO DATE	
10	GUIDEWAYS & TRACK ELEMENTS	0	0	0	0	0	0	0	0	0	0
20	STATIONS, STOPS, TERMINALS, INTERMODAL	0	0	0	0	0	0	0	0	0	0
30	SUPPORT FACILITIES: YARDS, SHOPS, ADMIN, BLDGS	10,480	0	0	0	0	0	0	0	0	0
40	SITework & SPECIAL CONDITIONS	0	0	13,548	0	13,548	374	13,548	0	13,548	0
50	SYSTEMS	0	0	5,950	0	5,216	64	3,685	0	5,950	0
	CONSTRUCTION SUBTOTAL (10-50)	10,480	0	19,498	0	18,764	438	17,232	0	19,498	0
60	ROW, LAND, EXISTING IMPROVEMENTS	27,748	0	38,377	0	38,377	0	37,475	0	38,377	0
70	VEHICLES	0	0	0	0	0	0	0	0	0	0
80	PROFESSIONAL SERVICES	650	0	1,150	0	758	0	437	0	1,150	0
	SUBTOTAL (10-80)	38,878	0	59,025	0	57,899	438	55,144	0	59,025	0
90	UNALLOCATED CONTINGENCY	1,113	0	365	0	0	0	0	0	365	0
100	FINANCE CHARGES	0	0	0	0	0	0	0	0	0	0
	TOTAL PROJECTS (10-100)	39,991	0	59,389	0	57,899	438	55,144	0	59,389	0
	861228 TOTAL	39,991	0	59,389	0	57,899	438	55,144	0	59,389	0

NOTE: EXPENDITURES ARE CUMULATIVE THROUGH JUL 2022.

Original Budget:

The Original Budget reflects the Board approved LOP Budget established April 24, 2014.

Current Budget:

In January 2021, the Metro Board approved a budget increase of \$12.9 million for the Early Completion Incentive Agreement increasing the Project 861228 LOP budget to \$59.4 million, to reflect the current Project scope.

Commitments:

Commitments unchanged this month at \$57.9 million which represents 97% of the Current budget.

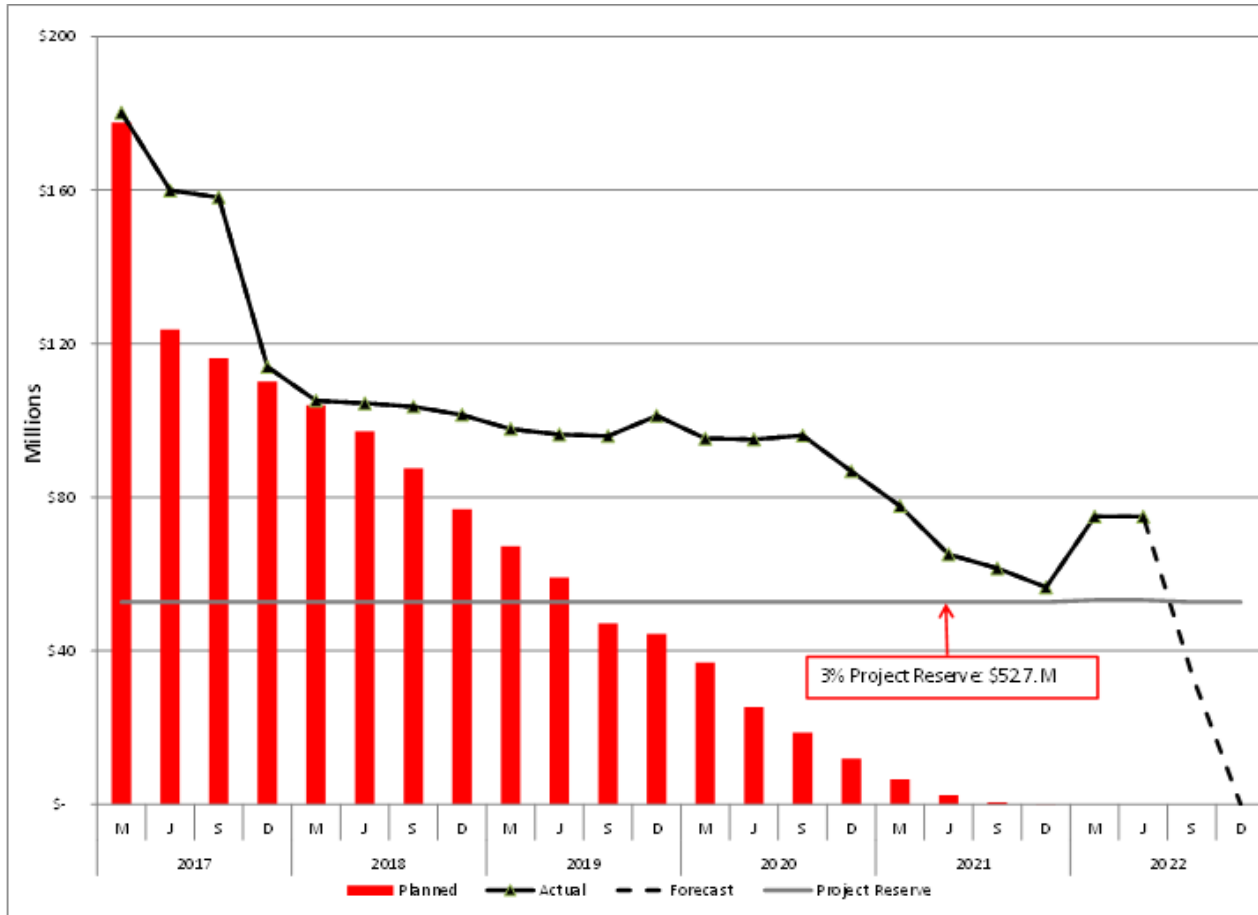
Expenditures:

Expenditures are cumulative through July 2022 and increased by \$0.4 million this month related to RCC. Fifty-five million (\$55.1) in expenditures to date represent 93.0% of the Current Budget.

Current Forecast:

The total current forecast remains equal to the total current budget.

Cost Contingency Drawdown



Cost Contingency Drawdown Analysis

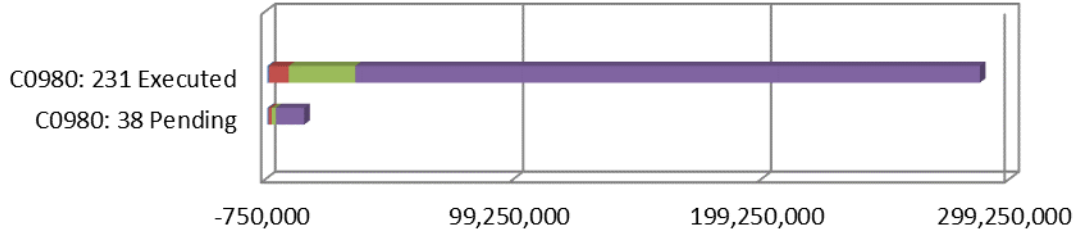
The Cost Contingency Drawdown curve reflects cost commitments and forecast exposure, thereby providing a depiction of overall contingency status. Basing the drawdown on exposures rather than executed contract modifications eliminates the administrative processing time involved to finalize contract modifications from the drawdown projections. Planned expenditures per quarter have also been updated to reflect the current schedule and risks. The Project is expected to reach the 3% Project Reserve (Total Contingency) threshold in Summer 2022.

In July there was a \$19.8million contingency drawdown into executed modifications related to professional services and RCC. It also includes a \$17.5 million pending Board approval removed from this month's forecast. The remaining unallocated contingency is \$7.5million.

PROJECT COST CONTINGENCY						
DOLLARS IN THOUSANDS						
	Original Contingency	LOP Contingency	Previous Period	Current Period	To-Date	Remaining Contingency (Forecast)
Unallocated Contingency	124,919	89,946	(51,854)	(13,149)	(82,454)	7,492
Allocated Contingency	86,345	92,809	(38,719)	(6,601)	(45,320)	47,489
Total Contingency	211,263	182,754	(90,573)	(19,750)	(127,773)	54,981

Summary of Contract Modifications

Contract Modifications (MODs) by Cost Level



	C0980		Total
	231 Executed	38 Pending	
■ Under \$100K	656,942	522,528	1,179,470
■ \$100K to \$250K	8,017,819	1,264,256	9,282,075
■ \$250K to \$1M	26,866,244	1,695,000	28,561,244
■ Over \$1M	251,980,830	11,413,433	263,394,263
Total Contract MODs	287,521,835	14,895,217	302,417,052
Contract Award Amount	927,226,995	927,226,995	
% of Contract MODs	31.0%	1.6%	

Note:

1. Percent of Contract MODs equals the Total Contract MODs divided by the Contract Award Amount.
2. Pending Mods are under negotiation.

Two hundred and thirty-one (231) changes with a total value of \$287.5 million have been executed since NTP of Contract C0980. An additional 38 changes, with a total estimated value of \$14.9 million, are pending. *One pending change in amount of \$6 million is funded from another project.* Of the \$287.5 million in executed modifications, \$24.25M are funded from Eastside Access Project and Non-FFGA Project, \$5.03M and \$19.22M, respectively.

DISADVANTAGED BUSINESS ENTERPRISE (DBE)

As of *June 2022*:

DBE Commitment – Design The percentage of funds apportioned to Design Contracts	22.63%
Current DBE Commitment Design Total DBE Committed Dollars divided by Total Contract Value for Design	\$16.8M (22.63%)
Current DBE Participation Total amount paid to date to DBEs divided by the amount paid to date to Prime	24.64%

Fourteen (14) Design DBE sub-consultants have been identified to date.

DBE Commitment – Construction The percentage of funds apportioned to Construction Contracts	18%
Current DBE Commitment Construction Contract commitment divided by current contract value for Construction	\$204.1M (18%)
Current DBE Participation Total amount paid to date to DBEs divided by the amount paid to date to Prime	20.75%

Construction DBE sub-contractors that have been identified increased to one hundred twenty-nine (129).

PROJECT LABOR AGREEMENTS (PLA)

As of *June 2022*:

Targeted Worker Goal Construction work to be performed by residents from Economically Disadvantaged Area in the United States	40.00%
Targeted Worker Current Attainment	62.40%
Apprentice Worker Goal Construction work to be performed by Apprentices	20.00%
Apprentice Worker Current Attainment	20.31%
Disadvantaged Worker Goal Construction work to be performed by Disadvantaged Workers who are residents of the United States	10.00%
Disadvantaged Worker Current Attainment	10.97%

FINANCIAL/GRANT

Status of Funds by Source

July 2022

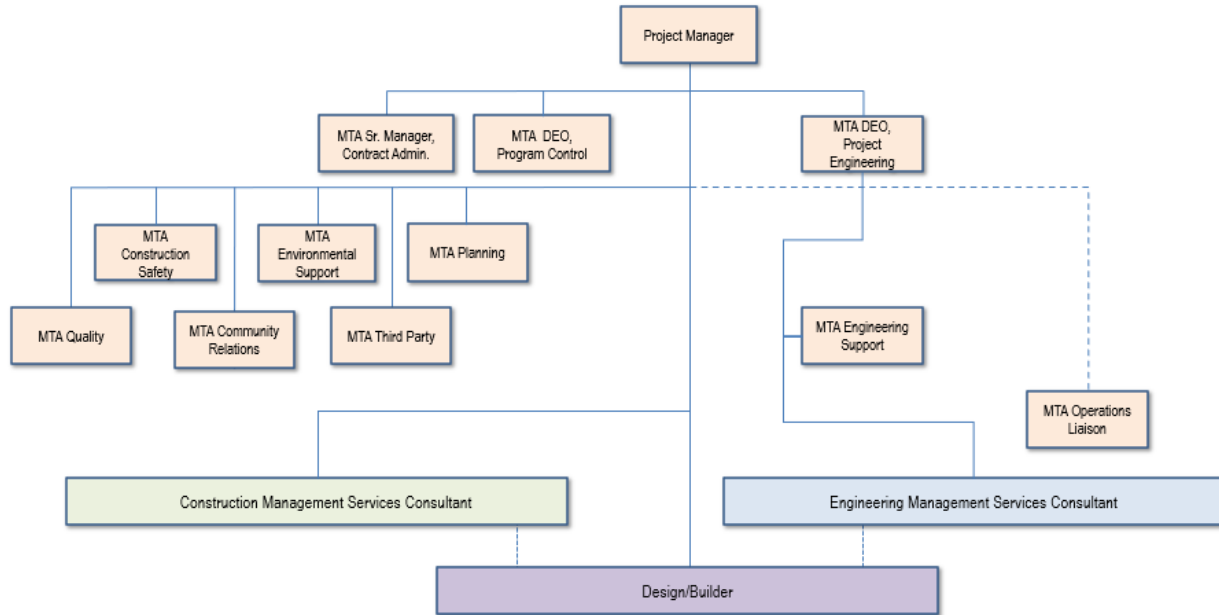
SOURCE	ORIGINAL BUDGET	TOTAL FUNDS ANTICIPATED	TOTAL FUNDS AVAILABLE	COMMITMENTS		EXPENDITURES		BILLED TO FUNDING SOURCE	
				\$	%	\$	%	\$	%
FEDERAL - CMAQ	\$64.00	\$228.01	\$64.00	\$133.09	58%	\$64.00	28%	\$64.00	28%
FEDERAL - SECTION 5309 NEW STARTS	\$669.90	\$669.90	\$669.90	\$661.30	99%	\$661.30	99%	\$661.30	99%
FEDERAL - SECTION 5309 NEW STARTS - AMERICAN RESCUE PLAN ACT		\$ 59.23	\$0.00	\$35.95	61%	\$35.95	61%	\$0.00	0
FEDERAL - RIP	\$0.00	\$1.41	\$1.41	\$1.41	100%	\$1.41	100%	\$1.41	100%
MEASURE R - TIFIA LOAN****	\$160.00	\$141.89	\$141.89	\$141.89	100%	\$141.89	100%	\$141.89	100%
MEASURE R BONDS****	\$0.00	\$18.11	\$18.11	\$18.11	100%	\$18.11	100%	\$18.11	100%
STATE PROPOSITION 1A HSRB *	\$114.87	\$114.87	\$114.87	\$114.87	100%	\$114.87	100%	\$114.87	100%
STATE PROPOSITION 1B PTMISEA **	\$149.50	\$135.16	\$135.16	\$135.16	100%	\$135.16	100%	\$135.16	100%
STATE STIP RIP	\$2.59	\$19.55	\$15.90	\$19.55	100%	\$19.55	100%	\$10.69	55%
STATE CAPITAL PROJECT LOANS - OTHERS ***	\$132.47	\$220.66	\$236.38	\$224.14	102%	\$224.14	102%	\$224.14	102%
MEASURE R	\$27.57	\$0.00	\$0.00	\$0.00	0%	\$0.00	0%	\$0.00	0%
CITY OF LOS ANGELES	\$41.98	\$41.98	\$41.98	\$41.98	100%	\$41.98	100%	\$41.98	100%
ROW LEASE REVENUES	\$64.25	\$19.85	\$19.85	\$19.85	100%	\$19.85	100%	\$19.47	98%
GENERAL FUND - METRO	\$0.00	\$85.21	\$79.80	\$120.04	141%	\$120.04	141%	\$120.04	141%
TOTAL	\$1,427.13	\$1,755.84	\$1,539.26	\$1,667.35	95%	\$1,598.26	91%	\$1,553.07	88%

NOTES:

1. EXPENDITURES ARE CUMULATIVE THROUGH JULY 2022.
 2. METRO AND TRIBUNE AGREED ON REIMBURSEMENT OF \$1.6 MILLION RELATED TO 2ND/BOARDWAY OVERBUILD.
 3. ORIGINAL BUDGET BASED ON FUNDING PLAN INCLUDED IN THE APPROVED FULL FUNDING GRANT AGREEMENT
 4. LACMTA RESERVES THE ABILITY TO UPDATE COSTS AND CHANGE FUND SOURCES AS REQUIRED.
- * STATE PROPOSITION 1A HIGH SPEED RAIL BONDS
 ** STATE PROPOSITION 1B PUBLIC TRANSPORTATION MODERNIZATION, IMPROVEMENT AND SERVICE ENHANCEMENT ACCOUNT
 *** OTHERS INCLUDE TDA ADMINISTRATION, AND NB PROPOSITION A ADMINISTRATION (FOR A TOTAL OF \$.255M)
 **** OTHERS INCLUDE TDA ADMINISTRATION, AND NB PROPOSITION A ADMINISTRATION (FOR A TOTAL OF \$.255M)
 ***** TIFIA LOAN CLOSED ON AUGUST 27, 2020. BALANCE OF ORIGINAL TIFIA BUDGET WILL BE MEASURE R BONDS.

PROJECT ORGANIZATION AND STAFFING

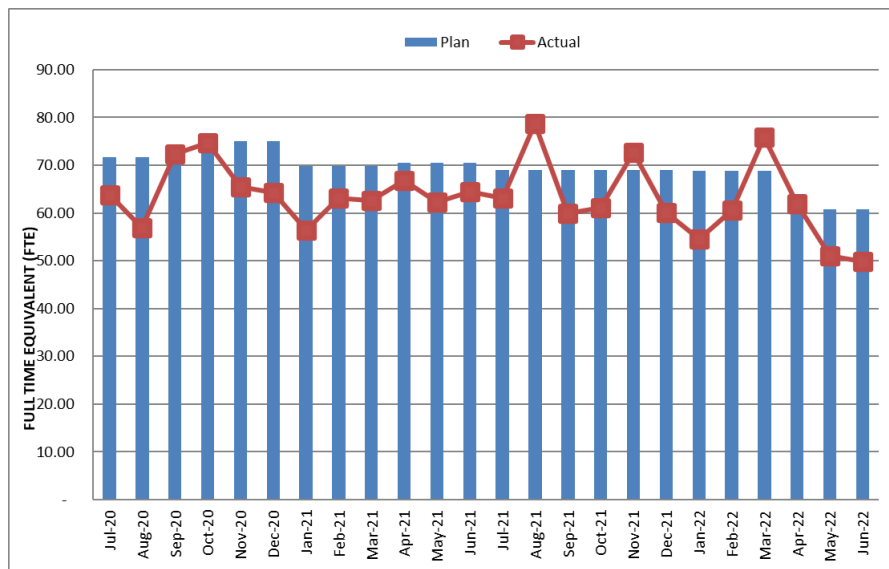
The D/B contract is being managed by a joint team of Metro and consultant personnel located at the Integrated Project Management Office (IPMO).



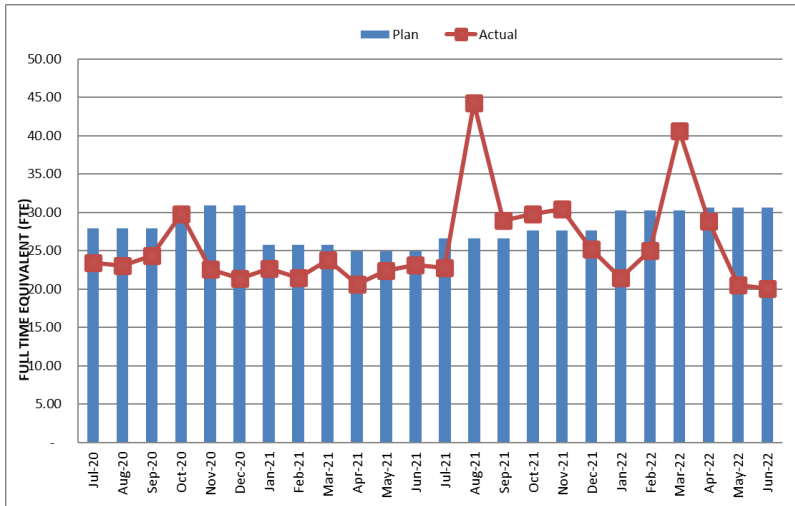
Updated: 03/2021

The overall FY22 Total Project Staffing plan averages 66.9 FTEs per month. The total actual project staffing for *June 2022* was 49.94; 20.06 FTEs for Metro's Project Administration staff and 29.9 FTEs for consulting staff. Consulting staff FTEs are based on monthly invoice billable hours. Review of staffing plans is on-going to ensure staffing needs are appropriately managed. Metro August and March actual FTEs doubled the forecast number due to Bus Bridge closure, Operations training, and incorrect charging. Corrections will be adjusted.

Total Project Staffing – Metro and Consultants



Metro Staff



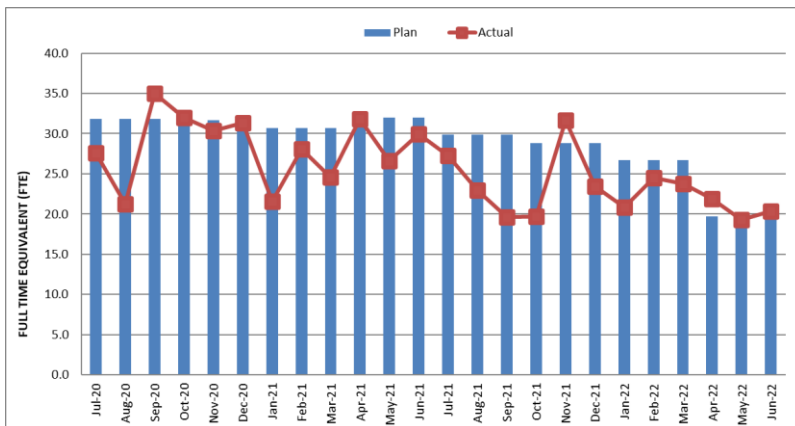
Staffing by Group

The opposing graphs represent planned vs. actual staffing levels by group.

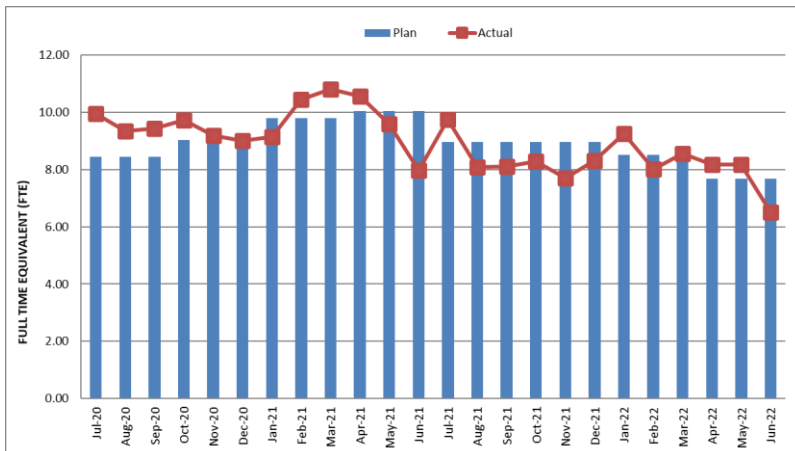
Metro staffing includes full-time staff located in the IPMO as well as part-time support located at Gateway Headquarters.

Staffing plans are developed for each fiscal year based on Project needs.

CM Support Services Staff (Consultant)



Engineering Services Staff (Consultant)



All above data through June 2022

REAL ESTATE

Open Real Estate Matters – Six Parcels Remaining

Department of Water and Power 'Duco Yard' – DWP (RC-473)

- The Purchase Agreement has been reviewed and accepted by Metro. The Chief Administrative Officer has approved the agreement; now pending LADWP Board approval. City Council approved the agreement in early May. The agreement has been signed, pending original to open escrow. Once escrow is opened LADWP will provide the executed deeds. Coordinating with LADWP on finalizing deed for execution. All documents have been received; this deed is currently in escrow.
- The Purchase and Sale Agreement with original signatures was received and the Grant Deed has been fully executed by LACMAT Real Estate processing agreement and payment. Pending acknowledgements for notarized signatures on Grant Deed before processing payment.

2nd and Hope

- City of Los Angeles Parcel - The City agreed to the transfer based on the City's and LACMTA's Memorandum of Agreement. The City finalized conveyance documents and is coordinating council action to approve. City approved the motion, LACMTA Real Estate coordinating with City of LA BOE on next steps to transfer property. The Project has approved the purchase price, Real Estate coordinating with City on transaction process. The City confirmed the property is subject to the Surplus Land Act. City staff is working on Council motion to declare property as exempt surplus property. Once the motion/declaration is approved, the City can proceed with transfer. The City has received all City approvals and has forwarded the exempt surplus property request to Housing and Community Development for concurrence of the transfer.
- The Public Works Committee to approve the exempt surplus property status in February, items will then go back to City Council by end of February for final approval. All City approvals received, pending approval from HCD that the sale meets Surplus Land Act requirements. All approvals have been received; purchase agreement from the City is pending.
- The GTK Way draft appraisal received, in review. Once reviewed, an offer of just compensation will be made to the City. Appraisal received and will be presented to the City. Offer presented to the City who is conducting an internal valuation to submit counteroffer. A settlement has been reached; purchase agreement from the City is pending.

QUALITY ASSURANCE

Metro QA performed the following activities during the month of *July 2022*:

- Performed oversight verification of RCC's design and construction activities
- Reviewed and provided comments on RCC's Quality related submittals
- Attended daily meeting/briefing, CMSS personnel
- Reviewed test results for Portland Cement Concrete, Soils Testing, Asphalt Testing and Non-Destructive Testing of Welding
- Attended CQWP and "Readiness Review" meetings with RCC
- Attended Bi-Weekly Quality Review Meetings and weekly SIT with RCC Quality Management
- *One Non-Conformance Report (C0980-2022-NCR-09) was initiated by Metro during the period, due to inadequate communication regarding work requests.*

As of *July 2022*, there have been a total of 139 NCRs issued by RCC; seven (7) of which remain open.

RCC and Metro consolidated the open items list in July 2022. There are 333 items that remain open.

ENVIRONMENTAL

The Project continues to hold bi-weekly coordination meeting between Metro and RCC.

Stormwater Pollution Prevention Plan (SWPPP) inspections of active Project work areas are conducted weekly by RCC. Metro performs additional inspections and shares observations with RCC for corrective action. Metro receives copies of communication sent between field sites and QSP-designee related to observed deficiencies and corrective actions. Change of Information to extend construction end date in SMARTS to December 31, 2022, *was accepted in SMARTS*.

Flowmeters at Hope, Central and Broadway are now at track level. Documentation for final sewer permits is with Metro for preparation, *to reflect documents received* from RCC. Permits for storm drain connections are awaiting documentation from RCC for Metro preparation.

Noise and vibration spot checks continue to be conducted weekly at multiple sensitive locations and at locations of new activities along the alignment.

There have been inquiries relevant to environmental compliance from stakeholders adjacent to the future Grand Av Arts/Bunker Hill Station; however, Metro/RCC's Community Relations continue to be responsive and actively address community concerns in coordination with Area Leads, Resident Engineers, and field staff with respect to each construction site.

No historic period features were encountered in *July 2022*.

Due to the original lapsing before the completion of construction, a new Memorandum of Agreement (MOA) between the FTA and the California State Historic Preservation Officer (SHPO) to meet the requirements of the National Historic Preservation Act is required. FTA are working to initiate a new MOA with SHPO, Native American tribes, and consulting parties regarding a new MOA. *The new MOA is anticipated to be in-place by October 2022.*

It is anticipated that the stipulations of the new MOA will be drawn from the original MOA less all work already completed under the original stipulations. Given the risk of advancing with ground-disturbing construction without an active MOU, the FTA and Metro are working to identify and defer all work that may have a detrimental impact on the discovery of significant historic and cultural resources under the project alignment until the new MOA is in-place. Activities identified thus far include street restorations, utility connections, and final paving. Those deferred activities will likely be undertaken early next year - after the initiation of revenue service.

CONSTRUCTION AND COMMUNITY RELATIONS

Construction Relations

- Responded and addressed Project related inquiries from the public received via the hotline, and email. The Little Tokyo Community Office remains closed due to the COVID-19 pandemic.
- Distributed twelve (12) construction notices to the public on various social media outlets. These notices were related to activities throughout the alignment to include concrete placement, utility work, geotechnical instrumentation maintenance, and civil improvements activities.
- Coordinated construction activities with over forty-*four* (44) stakeholders throughout the alignment.
- Presented virtually at four community meetings addressing planned activities, and the status of the project.
- *Hosted a project wide-community meeting via Zoom and Facebook Live to present updates on the status of construction, planned activities, and answer questions. An update on businesses promoted through social media, a construction mitigation, was also provided.*
- Continued briefings with: LA City Council District 14, and the Mayor's Office.

Eat, Shop, Play – Construction Impact Business Mitigation Program Highlights

Promoted *two* businesses and a Little Tokyo community festivals near the Project's alignment on social media posts, and e-newsletter: The Library Store, *Monkey Pants*, and the Nisei Week Festival.

CREATIVE SERVICES

Art Program

- Reviewed RFIs and submittals for glass, mosaic, and porcelain enamel steel artworks.
- *Led the assessment and selection of salvaged bricks for installation below the Little Tokyo/Arts District Station Interpretive Graphic Display Mitigation Measure.*
- Provided Quality Assurance review of glass mosaic installations with Metro project team in coordination with the RCC.
- *Developed artwork related public communications materials.*
- Continued assessment of Project operating impacts to signage systemwide.

SAFETY & SECURITY

C0980 Regional Connector

- In response to the COVID-19 pandemic, Project Safety Management continued to monitor compliance by RCC and IPMO staff with Federal, State, and City requirements for 'Essential Workers' on 'Critical Infrastructure' projects.
- Monitored RCC's pre-employment drug/alcohol testing and new employee safety orientation to ensure compliance with contract specifications.
- Conducted Project Safety Orientation for new Metro/Consultants and IPMO project staff. Training sessions included Safety Orientation, Underground Safety, and Self Rescuer Training.
- Participated in work plan reviews, daily crew safety meetings, and the RCC 'Safety Stand Down' sessions.
- Monitored construction field activities daily to ensure compliance with contract specifications. Participated with RCC staff in field safety inspection walks of multiple project worksites, laydown areas, and storage yards.
- Monitored Third Party contractor's work activities to ensure safety compliance.
- *Working with the Project to plan drills for First Responders and Emergency Services. Drills are expected to begin in early September with five distinct scenarios to be carried-out.*

Project Safety Record

- RCC reported no Recordable Injuries in the month of *July 2022*.
- RCC reported 66,190 work hours for *June 2022*. RCC's total Contract to Date work hours through *June 2022* are 6,235,105 with a total of twenty-four (24) Recordable Injuries and no Lost Workday (Days Away) case injuries. The C0980 Contract Recordable Injury Rate is 0.77. The Bureau of Labor Statistics reports that the National Average Recordable Injury Rate is 2.4 for heavy civil construction projects.
- Total Contractors' Project to Date Work Hours, including both the C0980 and the completed C0981 AUR contract, through *June 2022* is 6,346,164 hours with twenty-five (25) recordable injuries. The Total Project Contractor Recordable Injury Rate is 0.79.
- Total Aggregate Project work hours for Contractors, Metro, and Support Services Consultants, through *June 2022* is 7,417,605 with 27 Recordable Injuries and no Lost Workday (Days Away) injury cases. The Total Project Aggregate Safety Rate is 0.73.*

* Using RIR method of calculating.

APPENDIX CHRONOLOGY OF EVENTS

June 2007	Began Alternatives Analysis study
January 2009	Board approval of Alternatives Analysis study and next phase
February 2009	Began Draft Environmental Impact Statement / Report (EIS / EIR)
October 2010	Board approval of Draft EIS / EIR and selection of locally preferred alternative
January 2011	FTA approval to Enter into Preliminary Engineering
January 2011	Began Preliminary Engineering
August 2011	Board authorized to solicit major D/B contract C0980
October 2011	Issued RFQs for D/B contract C0980
December 2011	Began Real Estate Acquisition
March 2012	Completed PE and began Advanced PE
April 2012	Board certification of Final EIS / EIR and adoption of project
April 2012	Began Final Design - Advanced Utility Relocations (AUR)
June 2012	FTA Record of Decision
August 2012	Issued RFQs for D/B contract C0980
January 2013	Issued RFPs for D/Build contract C0980
March 2013	Completed Final Design - Advanced Utilities Relocation (AUR)
May 2013	NTP for Construction Management Services contract MC070
June 2013	Beginning of AUR contract C0981R Bid Period
July 2013	Submitted TIFIA loan application
July 2013	Submitted first draft FFGA application to FTA for review

September 2013	Received proposals for D/B Contract C0980
September 2013	Submitted second draft FFGA application to FTA, incorporating FTA comments
October 2013	Submitted Application to FTA Requesting an FFGA
November 2013	Started Emergency Generator Replacement Tank at 2nd Street and Historic Broadway Station (LA Times Building)
December 2013	Issued "Notice of Intent to Award" letter to contract C0981R contractor Pulice Construction Inc.
January 2014	Awarded AUR contract C0981R to Pulice Construction Inc.
February 2014	Issued Notice to Proceed for AUR Contract C0981R
February 2014	FTA issued Full Funding Grant Agreement to Metro
March 2014	Issued Amendment # 11 for D/B Contract C0980
March 2014	Started Survey for AUR Contract C0981R
April 2014	Metro Board approved the award of D/B Contract C0980 and established a LOP Budget
May 2014	Awarded D/B Contract C0980 to Regional Connector Constructors, Joint Venture
June 2014	Obtained possession of the Mangrove property from the City of Los Angeles
July 2014	Issued Notice to Proceed for D/B contract C0980
August 2014	C0980 D/B Contractor (RCC) began Final Design
September 2014	Metro performed the ground-breaking ceremony for C0980 D/B Contract
October 2014	EN077 Contractor, Arcadis, removed the underground storage tank at LA Times Parking Lot
November 2014	C0981R AUR Contractor completed DWP power work at 1st St. and Alameda
December 2014	Metro completed Field Vibration Testing for existing Expo and Gold Lines
January 2015	Demolish Buildings at 1st/Central Station
February 2015	Metro approved the Baseline Schedule for C0980 D/B Contract

March 2015	RCC started Historic Broadway Station Site Move-In
April 2015	Metro terminated C0981R Contract for convenience
May 2015	RCC started pile installation at Mangrove Launch Pit
June 2015	RCC started decking for shoofly bridge (Pile Cap & Grade Beam)
July 2015	DWP Water started installing 36" Water Valve at Alameda St.
August 2015	RCC completed DWP Power work at Flower & 5th Street
September 2015	RCC started Phase 2 DWP Power Relocation work at Broadway (Behind K Rail).
October 2015	RCC started pile installation at 1st/Central Station
November 2015	RCC completed Central Ave Full Closure (Pile & Decking)
December 2015	Metro Board approved the increase (\$131.8M) of the Project LOP Budget to \$1,589.9 million.
January 2016	RCC began implementation of Bus Bridge # 1 (Shoofly Tie-In Work at Little Tokyo).
February 2016	RCC began implementation of full closure at 2nd/Broadway intersection.
March 2016	RCC completed Bus Bridge # 1 (Shoofly Tie-In at Little Tokyo) work.
March 2016	Excavation of 1st/Central Station was initiated.
April 2016	TBM (Tunnel Boring Machine) was delivered to the temporary storage site.
May 2016	Closed 1st Street between Alameda and Central Streets. Opened northbound 1st East of Alameda Street.
June 2016	RCC completed excavation at 1st/Central Station Box
June 2016	RCC began pile installation on west side of Flower Street between 4th and 5th Street
July 2016	RCC initiated pile installation at Historic Broadway Station (West Hammer Head)
July 2016	RCC Initiated CIP invert at 1st/Central Station Box
August 2016	RCC completed 36" waterline replacement at 1st/Alameda

September 2016	RCC completed temporary decking at 1st/Alameda intersection (Wye)
October 2016	Metro performed TBM lowering ceremony
October 2016	RCC completed CIP invert at 1st/Central Station Box
November 2016	RCC completed CIP invert at Mangrove Launch Pit and Wye
December 2016	RCC completed Phase 1, 2nd Street Decking in front of LA Times Bldg.
January 2017	Metro Board approved a LOP Budget increase
February 2017	RCC initiated TBM mining (1st – Left)
March 2017	RCC completed TBM mining under JVP (first 500 ft.)
March 2017	RCC completed temporary decking on Flower St. (between 4th and 5th)
April 2017	RCC completed sub-invert at TBM retrieval pit
April 2017	RCC completed CIP invert at Grand Av Arts/Bunker Hill Station Box
May 2017	RCC completed temporary decking at Historic Broadway Station
May 2017	RCC completed water relocation work along Flower Street
June 2017	RCC completed mining and broke through at Grand Av Arts/Bunker Hill Station
June 2017	Five-month full closure of 6th Street approved by LADOT, Caltrans and LADWP
July 2017	RCC completed TBM mining of the first tunnel
August 2017	RCC extracted TBM shields from the Retrieval Shaft
September 2017	RCC began TBM mining of the second tunnel (right)
October 2017	RCC completed TBM mining under JVP (first 500 ft.)
October 2017	RCC completed temporary decking on Flower St. (between 5th and 6th, deck beam 16 to deck beam 58)
November 2017	Completed five-month full closure of 6th Street

November 2017	Initiated underpinning related to the Historic Broadway Station
December 2017	RCC completed mining and broke through at Grand Av Arts/Bunker Hill Station (Right Tunnel)
January 2018	RCC completed TBM mining of the second tunnel (right)
February 2018	RCC began excavation of cross passages
February 2018	RCC began SEM canopy pipe installation
March 2018	RCC began tunnel invert concrete
March 2018	RCC completed infrastructure for power relocation work at 6th/Flower
April 2018	RCC completed entrance structure excavation of Historic Broadway Station
May 2018	RCC began SEM excavation
June 2018	LADWP Power completed cable pulling at 6th/Flower
June 2018	Completed underpinning related to the Historic Broadway Station
July 2018	RCC completed station box excavation of Historic Broadway Station
August 2018	Completed entrance structure invert of Historic Broadway Station
September 2018	Completed temporary decking of Flower Street
October 2018	RCC started the CN 106.2 Final Design of the Revised Cable Transmission System for the Gold Line
October 2018	Metro completed approval of floating slab test results
October 2018	RCC completed SEM left drift excavation
October 2018	RCC completed Trainway Feeder duct bank at Flower St & 7th St
November 2018	RCC completed Little Tokyo / Arts District Station Box Excavation
November 2018	RCC completed Grand Av Arts/Bunker Hill Station East Platform Level Exterior Walls
December 2018	RCC completed SEM right drift excavation

December 2018	RCC completed the Historic Broadway Station west invert
December 2018	RCC started tunnel walkways between the future Little Tokyo/Arts District Station to Historic Broadway Station
December 2018	RCC started the future Little Tokyo/Arts District Station east invert
December 2018	RCC completed Grand Av Arts/Bunker Hill Station mezzanine concrete
January 2019	RCC completed Grand Av Arts/Bunker Hill Station invert concrete
January 2019	RCC completed SEM center top drift excavation.
January 2019	RCC started Little Tokyo/Arts District Station west cable pit and sump pit
February 2019	RCC completed SEM excavation
February 2019	RCC completed platform level exterior walls at Grand Av Arts/Bunker Hill Station
February 2019	RCC started fire protection in tunnels
March 2019	RCC completed Little Tokyo/Arts District Station invert concrete
March 2019	RCC completed Bored Tunnels walkway concrete
April 2019	RCC completed Grand Av Arts/Bunker Hill Station east concourse deck concrete
April 2019	RCC completed 1st Street Cut & Cover / U-Channel Level 1 excavation
May 2019	RCC completed North Flower Cut & Cover tunnel invert concrete
May 2019	RCC completed Wye Cut & Cover tunnel invert concrete
June 2019	RCC completed Right Tunnel floating slab curb
July 2019	RCC completed Left Tunnel floating slab curb
July 2019	RCC completed SEM Cavern concrete invert
August 2019	RCC completed 7th Street / Metro Center Wall Demolition
August 2019	RCC completed the Historic Broadway Station West Concourse Deck

September 2019	RCC completed Historic Broadway Station east invert
September 2019	RCC completed South Flower Cut & Cover tunnel excavation
October 2019	RCC completed Wye Tunnel Cut & Cover walls
October 2019	RCC completed Grand Av Arts/Bunker Hill Station concourse walls
November 2019	RCC completed Wye Tunnel Cut & Cover Roof Deck
November 2019	RCC completed SEM Cavern Exterior Walls
December 2019	RCC completed Little Tokyo/Arts District Station plenum deck concrete
January 2020	RCC completed SEM Cavern Interior Walls
January 2020	RCC completed 1st Street Tunnel Cut & Cover Roof Deck
February 2020	RCC completed Wye Cut & Cover Tunnel Pin Pile Removal
February 2020	RCC completed Grand Av Arts/Bunker Hill Station platform walls
March 2020	RCC completed Grand Av Arts/Bunker Hill Station lower ancillary level walls
March 2020	RCC completed SEM plenum deck
April 2020	RCC completed Historic Broadway Station west concourse exterior walls
April 2020	RCC completed Historic Broadway Station concourse deck
May 2020	RCC completed SEM Cavern Arch Walls
May 2020	RCC completed Grand Av Arts/Bunker Hill Station upper ancillary level walls
May 2020	RCC completed South Flower Cut & Cover invert
June 2020	RCC completed fabrication pre-cast floating slabs
June 2020	RCC completed North Flower Cut & Cover roof deck
July 2020	RCC completed Historic Broadway Station entrance concourse level walls

July 2020	RCC completed installation pre-cast floating slabs
August 2020	RCC completed Wye backfill, deck removal and paving
September 2020	RCC completed Grand Av Arts/Bunker Hill Station upper roof deck
September 2020	RCC completed Little Tokyo/Arts District Station ancillary walls
September 2020	TIFIA loan paid off and account closed
October 2020	RCC completed Gold Line Communications Relocation Cutover
October 2020	RCC completed Flower Cut & Cover Tunnel roof deck
November 2020	RCC completed Little Tokyo/Arts District Station ancillary roof deck
November 2020	RCC completed Grand Av Arts/Bunker Hill Station ES1/ES2 walls
December 2020	RCC completed delivery of rail stockpile to Flower Cut & Cover
December 2020	RCC completed demolition of the Little Tokyo/Arts District Station
January 2021	RCC completed Historic Broadway Station box roof deck
January 2021	RCC completed Alameda MSE Wall demolition
February 2021	RCC completed Flower Tunnel Wet Standpipe
February 2021	RCC completed Flower Tunnel Emergency Walkways
March 2021	RCC completed Historic Broadway Station Entrance Roof Deck
April 2021	RCC completed Little Tokyo/Arts District Station West Tunnel Vent excavation
May 2021	RCC completed Grand Av Arts/Bunker Hill Station Upper Plaza Deck
June 2021	RCC completed Little Tokyo/Arts District Station East Tunnel Vent structure
June 2021	Regional Connector received \$59.23M American Rescue Plan Act of 2021
July 2021	RCC completed Historic Broadway Station East Tunnel Vent Shaft Excavation
July 2021	Completed deck removal on Flower Street.

August 2021	RCC completed Little Tokyo/Arts District Station Track Installation
August 2021	RCC completed Grand Av Arts/Bunker Hill Station PS3 stair structure.
September 2021	RCC completed Flower Street emergency exit stair structure.
September 2021	RCC completed Train Control Installation from 7th/Metro Center Station to Historic Broadway Station.
September 2021	RCC completed Platform Edge Paver Installation Grand Av Arts/Bunker Hill Station.
October 2021	RCC completed West Vent Plenum at Historic Broadway Station.
October 2021	RCC completed roof deck at the Wye Fan Plant.
November 2021	RCC completed track installation at 1 st Street Guideway.
November 2021	RCC completed MSE Walls at Alameda Guideway.
December 2021	RCC completed LVT Track Installation at Alameda Guideway.
December 2021	RCC completed Vent Shaft at Wye Fan Plant.
January 2022	RCC completed OCR 7 th /Metro Center to Wye.
February 2022	RCC completed East Vent Plenum at Historic Broadway Station.
March 2022	RCC completed Train Control Installation.
April 2022	RCC completed OCR Installation.
May 2022	RCC completed Track Installation.
June 2022	RCC completed Stainless Steel Elevator Enclosure at Historic Broadway Station.
July 2022	<i>RCC completed Canopy Column Steel at Historic Broadway Station.</i>