

Metro Orange Line Extension

April 2009



TABLE OF CONTENTS

	Page No.
Project Overview.....	1-2
Management Issues.....	2
Project Status	
• Project Scope.....	3
• Schedule	
○ Key Milestones Six-Month Look Ahead	4
○ Summary Schedule.....	5
○ Schedule Narrative	6
• Project Cost Status and Analysis.....	7
• Financial/Grant Status.....	8
• Staffing.....	9-10
• Real Estate.....	11
• Environmental.....	12
• Community Relations.....	12
• Quality Assurance.....	13
• Safety.....	13
• Art Development.....	13
• Third Party.....	14
Chronology of Events.....	15-16
Alignment Illustrations.....	17-20
Appendices.....	21-23

PROJECT OVERVIEW

The Metro Orange Line (MOL) Extension Project is a four-mile extension of the Metro Orange Line extending from the Canoga park-and-ride lot to the Chatsworth Metrolink Station. The Project includes: busway, new station platforms at the Canoga park-and-ride lot, new stations at Sherman Way (with park-and-ride), Roscoe Boulevard, Nordhoff Street, and the Chatsworth Metrolink Station (with park-and-ride); grade-separation structure over active railroad tracks and Lassen Street (Lassen/RR Overcrossing) providing direct access into the Chatsworth Metrolink Station; Los Angeles River and Santa Susana Wash bridge crossings; and satellite bus parking facility. The project also includes street improvements, bicycle/pedestrian path, systems equipment and landscaping similar to the MOL.

Iteris, Inc., Metro's engineering consultant, has substantially completed preliminary engineering. Project staff received Metro Board approval in January 2009 to commence selected final design for schedule critical components of the project. Early completion of the final design of the new parking lot north of the Chatsworth Metrolink Station (North Parking Lot - Contract C0941) will allow a portion of the existing parking lot south of the Chatsworth Metrolink Station to be closed and construction of the Lassen/RR Overcrossing to commence sooner than originally planned. Iteris, Inc. completed the final design for inclusion in the Contract C0941 solicitation documents and the Contract was advertised on March 13, 2009. Seven bids were received on April 13 and are under evaluation. Qwest Communications completed concrete encasement protection of their existing fiber optic line and added access vaults in advance of the north parking lot construction (Contract C0941).

Early completion of the final design of the Lassen/RR Overcrossing (Contract C0944) will allow construction of the bridge to commence sooner than if this work were included in a major design-build contract. Iteris, Inc. continues developing the final design and submitted the second design review package in April 2009 of the Lassen Street improvements including the at-grade rail crossing. First design review submittal for the bridge structure is scheduled in early May 2009. Final design documents will be included in the design-bid-build solicitation documents for Contract C0944 with advertisement planned this summer.

In addition to the two design-bid-build solicitation packages, Iteris, Inc. continues to develop technical documents for inclusion in the design-build Contract C0943 which includes the majority of the project work, including busway, stations, two bridges, approaches for the Lassen/RR Overcrossing, bikeway, parking lots, landscaping and systems. It is anticipated the solicitation package will be available for advertisement in June 2009. Consideration will also be given to adding Contract C0944 work as an option in the design-build Contract C0943.

Metro continues to coordinate with SCRRA (Metrolink) and has issued a Work Order to Metrolink for track and signal facility design and relocation services, and design review of the Lassen/RR Overcrossing. Removal of interfering signal equipment, realignment of the existing railroad track, modifications of the rail signals and at-grade rail crossing safety enhancements at Lassen Street are required to be substantially completed prior to Metro's award of the Lassen/RR Overcrossing (Contract C0944).

PROJECT OVERVIEW

Metro has initiated discussions with LADWP and the affected utility companies for relocating interfering power, fiber optic and communication lines which are required to be completed prior to starting construction of Contract C0944 Lassen/RR Overcrossing on the north side of Lassen St.

Metro's Real Estate Department has issued courtesy letters to lease holders with 90 day lease terms, and termination letters to lease holders with 180 days lease terms that their lease will be terminated and the right of way completely cleared of all improvements.

MANAGEMENT ISSUES

Concern No. 1: Agreement with SCRRA (Metrolink) and completion of advance rail modification work.

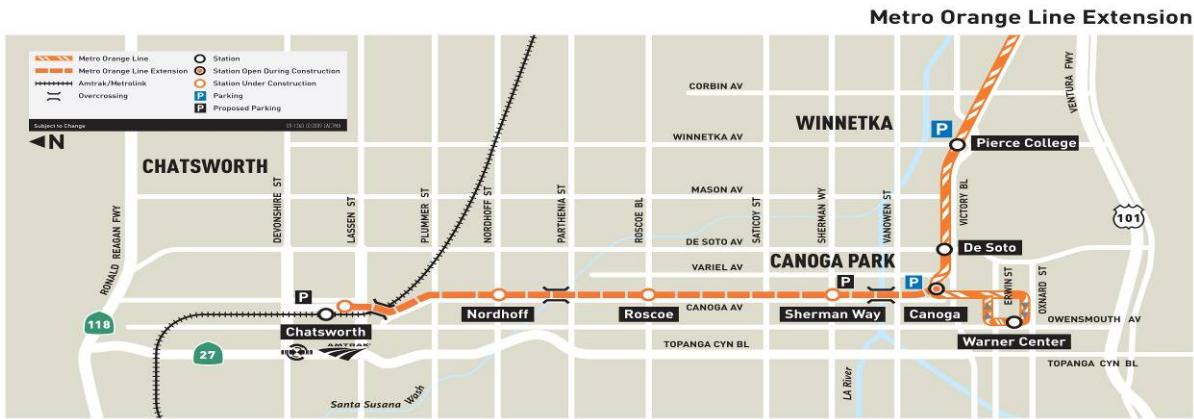
Status/Action Metrolink must substantially complete signal modification and track realignment work prior to Metro's award of Contract C0944 Lassen/RR Overcrossing. Metro has issued a Work Order to Metrolink to initiate this work on January 27, 2009 and a draft Construction and Maintenance Agreement on February 20, 2009. SCRRA has advised that new rail signal control equipment with a long delivery lead time will be required to replace existing equipment which interferes with the proposed bridge column. First concern is that SCRRA has not yet provided a list of long delivery lead items so that these can be placed on order, and delays in procuring the equipment and completing the rail signal relocation work could delay the start of Lassen/RR Overcrossing. Second concern is that SCRRA is suggesting additional scope as part of the Project to improve the at-grade rail crossing at Lassen Street. Metro will identify betterments after SCRRA provides clear scope of work. Additionally, SCRRA provided a different version of draft agreement on April 20, 2009 and another concern is the amount of time required to execute agreement.

Concern No. 2: Agreement with LADWP and Time Warner and completion of advance relocation of power, fiber optic and communication lines at Lassen Street.

Status/Action The relocation of power lines at Lassen Street is required prior to the C0944 Lassen/RR Overcrossing contractor commencing construction of the bridge. LADWP has provided two options, one for underground and another for overhead relocation. The underground option is preferred, however, the concern is that LADWP has significantly increased the scope of work and costs for the underground relocation and estimated one year to design and complete the relocation work. Metro will work with LADWP to identify underground conduit/vault construction work that can be done by Metro's contractor to reduce potential delays to the start of Lassen/RR Overcrossing construction.

PROJECT SCOPE

C0943: Metro Orange Line Extension (MOL Ext) is a design-build contract to construct the majority of the Project scope of work. This contract will include design and construction of busway, new stations at Sherman Way (with park-and-ride), Roscoe Boulevard, Nordhoff Street, and Chatsworth Metrolink Station (with park-and-ride). The existing MOL Canoga park-and-ride lot will be modified with new station platforms. In addition, the contractor will design and construct approaches to the Lassen/RR Overcrossing, a bridge over the Los Angeles River, a smaller bridge over the Santa Susana Wash, street improvements, bicycle/pedestrian path, satellite bus parking facility, landscaping, systems equipment, and system integration and testing.



C0941: North Parking Lot (Chatsworth Station) is a construction contract for a new parking lot to be constructed north of the existing Chatsworth Metrolink Station. Completion of this lot is required before the south parking lot is modified to ensure that parking is continuously available for Metrolink patrons during construction of the MOL Extension.





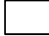

C0944: Lassen/RR Overcrossing is a construction contract for a grade separation that carries the busway over active railroad tracks and Lassen Street, and descends into the north terminus of the alignment at the Chatsworth Metrolink Station site. Scope of work includes construction of a 500' long 3-span bridge (excluding approaches), improvements along Lassen Street with a new traffic signal at Old Depot Plaza Road, and improvements to the Lassen Street at-grade crossing of the railroad tracks.

Contract Work Order – Advance SCRR (Metrolink) Rail Signal Modification & Track Realignment is to be substantially completed by Metrolink in advance of Metro’s award of construction Contract C0944 Lassen/RR Overcrossing.

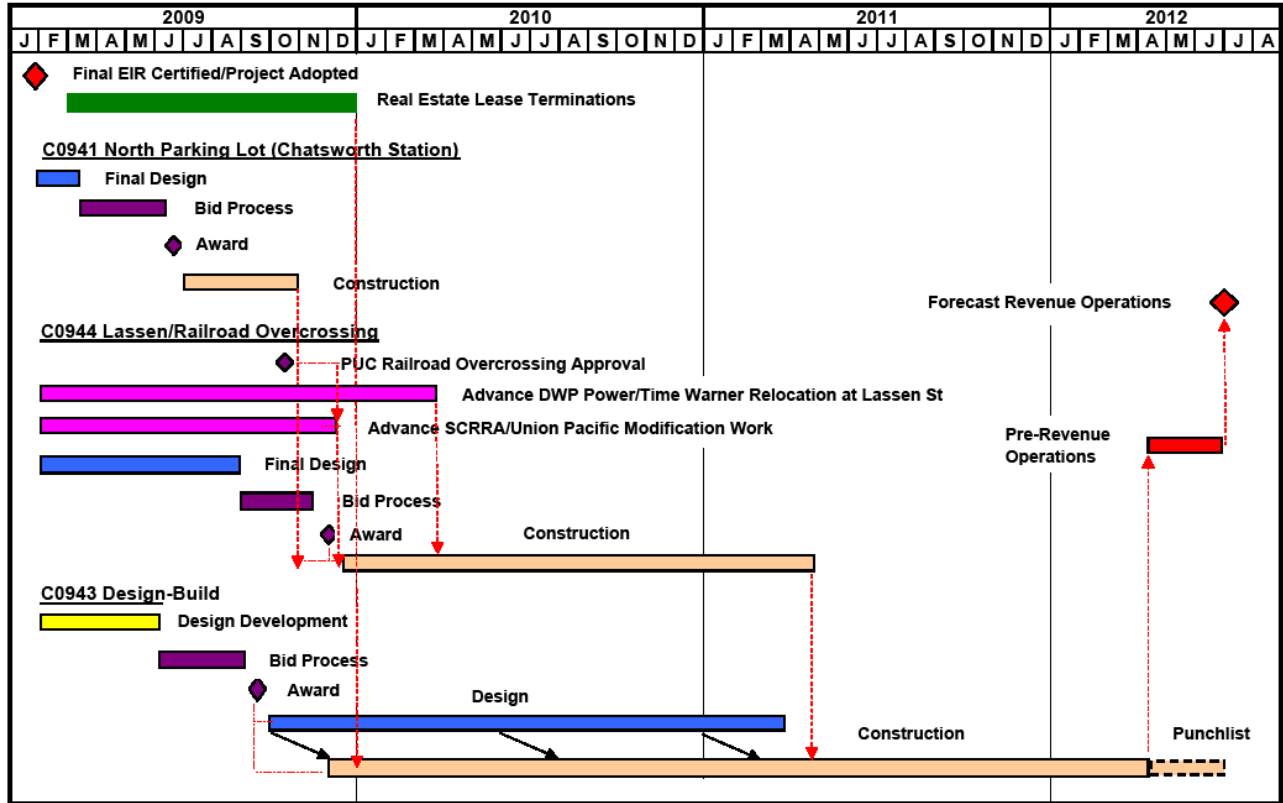
Contract Work Order - Advance Relocation of power, fiber optic and communication lines on Lassen Street is to be completed by LADWP and the affected utility companies prior to Contract C0944 Lassen/RR Overcrossing contractor commencing construction over Lassen St.

KEY MILESTONE SCHEDULE SIX-MONTH LOOK AHEAD

	Milestone Date	Apr-09	May-09	Jun-09	Jul-09	Aug-09	Sep-09
(Forecast) C0941: Award	5/14/09		◆				
(Forecast) C0941: Issue NTP Construction	5/29/09		◆				
(Forecast) C0943: Advertise	6/1/09			◆			
(Forecast) C0944: Advertise	8/11/09					◆	
(Forecast) C0943: Award	9/3/09						◆
(Forecast) C0943: NTP	9/18/09						◆

	Metro Staff		Metro Engineering Consultant		Metro Board Action
	Other Agencies		Contractor		New Date

SUMMARY SCHEDULE



SCHEDULE NARRATIVE

With the Metro Board adoption of the MOL Extension Project in January 2009, the Board directed staff to accelerate the completion of the project. To accomplish this directive, staff has taken action to complete design for the critical component of the project, which includes the grade separated bridge over active railroad tracks and Lassen Street. This is in lieu of the design-build contractor starting final design eight months later and having to work out significant issues with SCRRA (Metrolink), Union Pacific (UP), California Public Utilities Commission (CPUC), City of Los Angeles and utility companies, such as third party coordination, the safety work rules, design approvals, relocation of interfering utilities and permits.

Instead of only one design-build contract as originally planned, the scope of work has been broken out into two design-bid-build contracts, one design-build contract and advance railroad/utility relocation work orders to accelerate the project. The three construction contracts are described in the Project Scope section of this Report and are listed below:

Contract C0941 North Parking Lot (Chatsworth Station) – design-bid-build;
Contract C0943 Metro Orange Line – design-build; and
Contract C0944 Lassen/RR Overcrossing – design-bid-build.

Consideration will also be given to adding Contract C0944 work as an option in the design-build Contract C0943.

Completing the North Parking Lot (Chatsworth Station) will allow the south parking lot to be used as the staging area for the Overcrossing contractor to construct the bridge and complete the Lassen Street improvements.

The project critical path starts with completing the negotiations and executing an agreement with SCRRA (Metrolink) to complete early advance work, such as removal of interfering signal equipment, realigning existing railroad track, and at-grade rail crossing safety enhancements at Lassen Street, in advance of the award of the Lassen/RR Overcrossing construction contract. Also critical is the concurrent DWP and Time Warner power and communication relocation work at Lassen Street in advance of the award of the Lassen/RR Overcrossing construction contract.

The critical path continues with the actual construction of the overcrossing bridge structure leading to the turnover of the structure to the design-builder to complete the remaining scope of work. The critical path switches to the design-builder completing the bridge approaches and installing the fiber optic cable transmission system (FOCT) followed by systems equipment to be installed at all the stations. This and local field acceptance testing (LFAT) will mark the end of construction and the beginning of final systems integration. The critical path concludes with systemwide acceptance testing, pre-revenue operations, and the start of revenue operation.

PROJECT COST STATUS

**COST REPORT BY ELEMENT
UNITS IN MILLIONS**

ELEM- MENT	DESCRIPTION	ORIGINAL BUDGET	CURRENT BUDGET		COMMITMENTS		EXPENDITURES		CURRENT FORECAST		FORECAST VARIANCE
			PERIOD	TO DATE	PERIOD	TO DATE	PERIOD	TO DATE	PERIOD	TO DATE	
C	CONSTRUCTION	137.3	-	137.3	-	0.3	-	-	-	137.3	-
R	RIGHT-OF-WAY	8.0	-	8.0	-	-	-	-	-	8.0	-
V	VEHICLES / BUSES	9.9	-	9.9	-	-	-	-	-	9.9	-
P	PROFESSIONAL SERVICES	38.7	-	38.7	4.4	7.2	-	-	-	38.7	-
PC	PROJECT CONTINGENCY	21.7	-	21.7	-	-	-	-	-	21.7	-
PR	PROJECT REVENUE	-	-	-	-	-	-	-	-	-	-
TOTAL		215.6	-	215.6	4.4	7.5	-	-	-	215.6	-

NOTE: EXPENDITURES ARE CUMULATIVE THROUGH MARCH 2009.

PROJECT COST ANALYSIS

Original Budget and Current Budget:

The Life of Project Budget for the Metro Orange Line Extension Project was adopted in January 2009 for a value of \$215.6 million.

Current Forecast:

The total project forecast remains the same at \$215.6 million.

Commitments:

The commitments increased \$4.4 million this period due to execution of Contract MC069 for construction management support services with Stantec Consulting Inc. and for third party scope of work with the Los Angeles City Department of Water & Power. The \$7.5 million in commitments to date represents 4% of the Original Budget.

Expenditures:

Expenditures are cumulative through March 2009. The expenditures to date are less than \$100,000.

FINANCIAL/GRANT STATUS

Project 800119 – Metro Orange Line Extension

APRIL 2009

STATUS OF FUNDS BY SOURCE

\$ in millions

SOURCE	(A)	(B)	(C)	(D)	(D/B)	(E)	(E/B)	(F)	(F/B)
	ORIGINAL BUDGET (1)	TOTAL FUNDS ANTICIPATED (2)	TOTAL FUNDS AVAILABLE	COMMITMENTS \$	%	EXPENDITURES \$	%	BILLED to FUNDING SOURCE \$	%
PROP 1B FUNDS-PTMISEA*	68.0	30.3		7.5	4%		0%		0%
PROP 1B FUNDS-SLTPP**	73.8	73.8			0%		0%		0%
PROP C 25%	73.8	111.5			0%		0%		0%
TOTAL	215.6	215.6	0.0	7.5	4%	0.0	0%	0.0	0%

(1) Based on January 2009 Metro Board adoption of Life of Project Budget.

(2) Based on March 2009 Capital Programming Revised Financial Plan.

* PTMISEA: Public Transportation Modernization and Improvement Surface Enhancement Account

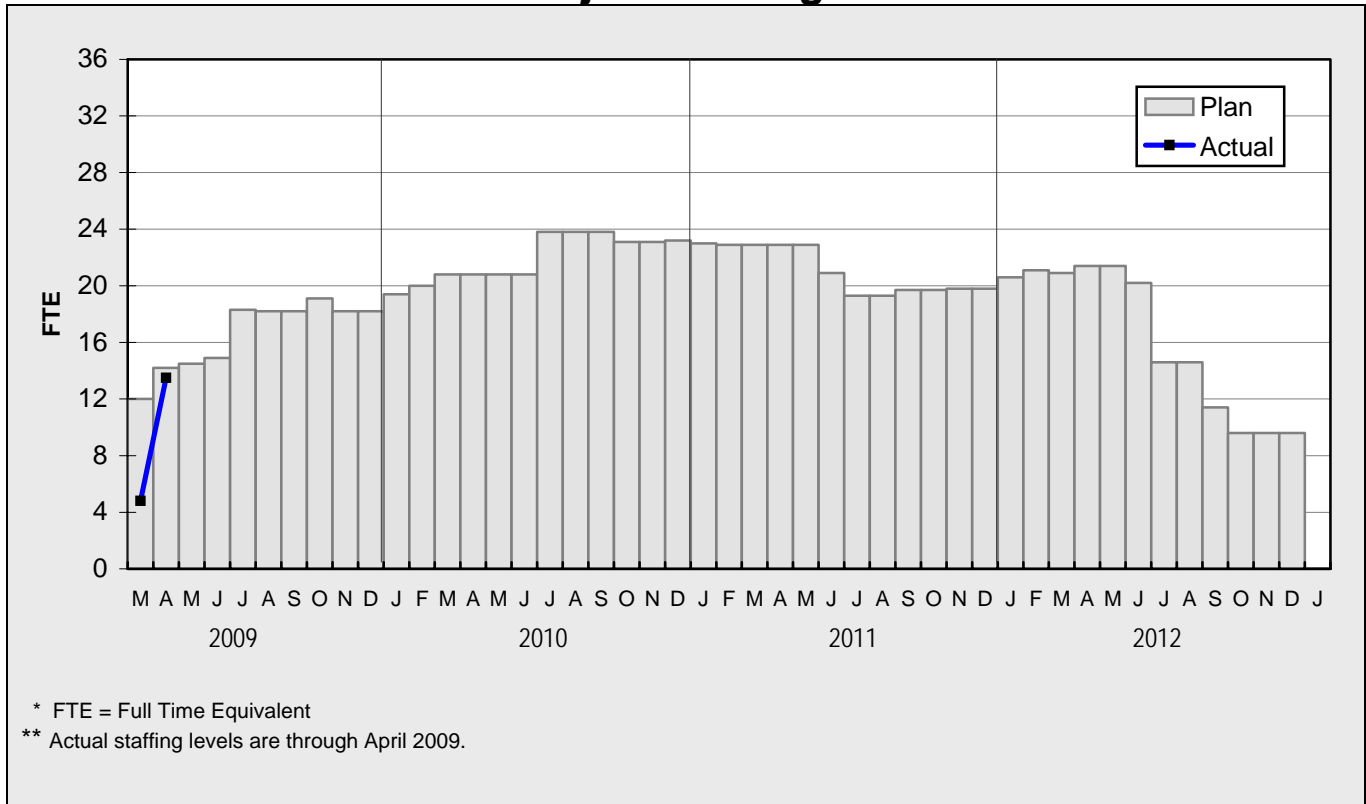
** SLTPP: State - Local Transportation Partnership Program

NOTE: Expenditures are cumulative through March 2009.

STATUS OF FUNDS ANTICIPATED

STATE PROP 1B – PTMISEA: Funds anticipated will be lower than originally budgeted due to on-going State Budget deficit. Proposition C 25% Highway Fund will replace the remaining unfunded balance. Metro submitted a State application for \$8.6M in September 2008. The State approved the \$8.6M application in March 2009. However, the State has not yet released the funds.

**STAFFING STATUS
Total Project Staffing - FTES**

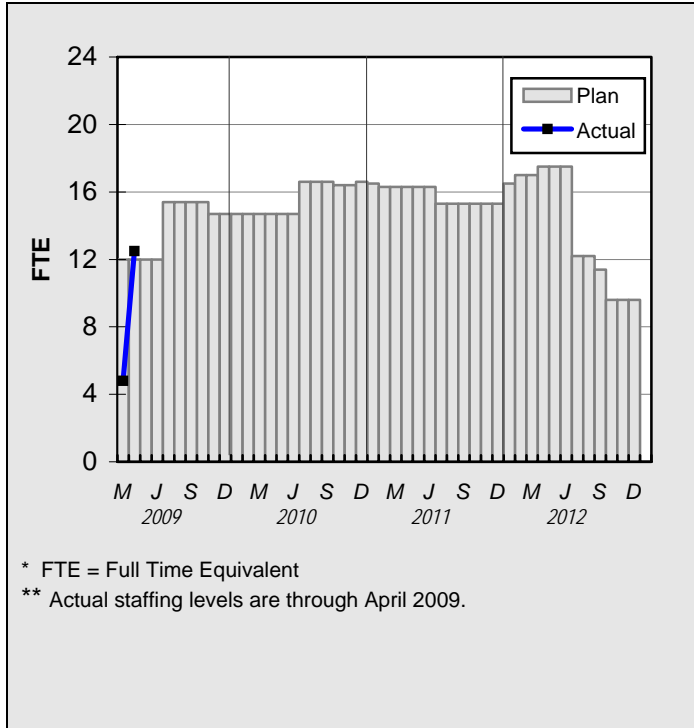


Total Project Staffing

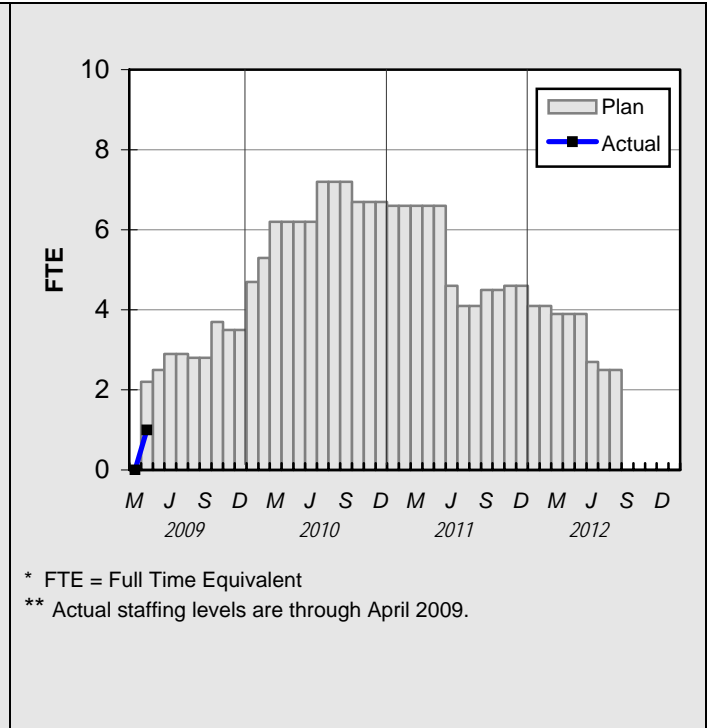
The overall FY10 Total Project Staffing plan averages 14.0 FTE's per month. For April 2009, there was a total of 13.5 FTE's. Next month, Design Consultant services will be included.

STAFFING STATUS

AGENCY STAFFING



**CONSTRUCTION MANAGEMENT
SUPPORT SERVICES CONSULTANT**



REAL ESTATE STATUS

- The number of leases along the MOL Extension Project is 86. The total leases include 25 signboard leases and 61 ground leases.
- All of the tenants, except four (4) have received a Courtesy Letter informing them that their lease would be terminated for the MOL Extension Project.
- Termination notices were sent to six (6) tenants who were required to receive 180 day termination notices. Termination Notices were issued to: (1) Green Light, (2) Green Scene, Inc., (3) Northpark Industrial, LP, (4) Chatsworth Storage, (5) Dale Plaine, Inc. and (6) Steve Port & Miranda Properties, LLC.
- The following three (3) tenants who will be permitted to remain on the right of way with amended leases which allow them to co-exist with the busway: (1) Jacobi Building Supply, (2) National Ready Mix, and (3) Portland Cement.
- Letters were sent to 13 pre-acquisition tenants introducing Paragon Partners who will serve as the Relocation consultant. Paragon will commence interviews with these tenants to determine their business needs, relocation preferences, and eligibility for relocation benefits under state law.
- Discussions are underway with the Chatsworth Mobile Home Park owners for the construction of a privacy fence along the UPRR right of way, and dedication of easements for the bikeway, and traffic signal.

REAL ESTATE STATUS – LEASES

	Total Number	Received Courtesy Letters	Received Termination Notice	Unlawful Detainer Action	Relocation Completed	Available for Demolition	Available for Construction
Leases	86	82	6	0	0	0	0

ENVIRONMENTAL STATUS

- Status to be reported once a construction contract has commenced.

COMMUNITY RELATIONS STATUS

- Developed and disseminated construction notice regarding project-in-place fiber optic facilities at north parking lot at Chatsworth Station.
- Presented signage plan to Chatsworth Design Review Board for new MOL Extension station.
- Developed Metro Orange Line Extension website.
- Held Project briefing for elected officials staff.

QUALITY ASSURANCE STATUS

- Status to be reported once a construction contract has commenced.

QUALITY ACTION REQUEST STATUS

Project #	QAR #	Description	Due Date	Status	Comments
C0941					
C0943					
C0944					

SAFETY STATUS

- Status to be reported once a construction contract has commenced.

Contractor	Project To Date										
	Work-Hours	Cases			Days Lost			Incident Rates			
		Total Cases	Total Lost Time	Retricted Duty	Current	Carry Over	Total	Total Cases	Total Lost Time	Retricted Duty	Days Lost
C0941	0	0.0	0.0	0.0	0.0	0.0	0.0	0.0	0.0	0.0	0.0
C0943	0	0.0	0.0	0.0	0.0	0.0	0.0	0.0	0.0	0.0	0.0
C0944	0	0.0	0.0	0.0	0.0	0.0	0.0	0.0	0.0	0.0	0.0
Subtotals	0	0.0	0.0	0.0	0.0	0.0	0.0	0.0	0.0	0.0	0.0
Metro Cons. Mgm	0	0.0	0.0	0.0	0.0	0.0	0.0	0.0	0.0	0.0	0.0
Totals	0	0.0	0.0	0.0	0.0	0.0	0.0	0.0	0.0	0.0	0.0

ART DEVELOPMENT STATUS

- Status to be reported once a construction contract has commenced.

THIRD PARTY AGREEMENT STATUS

Third Party	Type of Agreement	Forecast Execution Date	Required Need Date	Status/ Comments
City of Los Angeles	Amendment	12/02	N/A	Executed December 2002. Special Permitting Process (SPP) was drafted by City in April 2009 and is projected to be executed by June 2009.
Los Angeles County	Master	Completed	N/A	Executed April 2003.
LADWP (Water/Power)	Amendment	6/09	6/09	Work Orders for critical work issued under current MCA. Authorization of new Work Order Agreements going to Metro Board in June 2009.
The Gas Company	Amendment	Completed	N/A	Executed May 2005.
AT&T Long Distance	Amendment	Completed	N/A	Executed May 2005. (Formerly PacBell)
TCG Los Angeles, Inc.	Agreement	Completed	N/A	Executed May 2005.
AT&T California	Amendment	Completed	N/A	Executed May 2005.
Qwest	Agreement	Completed	N/A	Agreement executed March 2009.
L.A. County Department of Public Works/L.A. County Flood Control District	Agreement	Completed	N/A	Agreement executed 1991 between SCRTD and LA County Flood Control District.
MCI Worldcom	Amendment	Completed	N/A	Executed May 2005.
Verizon Wireless (Verizon Business (MCI))	Amendment	Completed	N/A	Executed May 2005. (MCI)
SCRRA (Metrolink)	Agreement	6/09	6/09	Work Order authorized in January 2009 to accelerate Project. Authorization of new Work Order Agreements going to Metro Board in May 2009.
UPRR	Agreement	Completed	N/A	Executed June 1989. Work Order Authorized in January 2009.
Level 3 Communications	Agreement	Completed	N/A	Executed May 2005.
Time Warner Cable	Agreement	6/09	6/09	Authorization of new Work Order Agreements going to Metro Board in June 2009.
MWD	Agreement	Completed	N/A	Cooperative Agreement for Long Beach-LA Rail System December 1986. A May 2003 letter from Metro concurs that no additional MWD amendment is required. Both agencies will review submittals upon request without charge, unless protection, relocation and/or adjustments are required.

CHRONOLOGY OF EVENTS

1990	Metro purchased abandoned railroad right-of-way.
April 1, 2003	Regionally Significant Transportation Investment Study (RSTIS) completed and approved by Metro Board.
September 28, 2006	Metro Board authorized the Chief Executive Officer to begin environmental clearance and Preliminary Engineering for a northern extension of the Metro Orange Line along the Metro-owned Canoga Avenue rail right-of-way to the Chatsworth Metrolink Station.
November 7, 2006	Metro issues RFP No. PS43701952 for Northern/Canoga Extension of the Metro Orange Line to solicit Contractor to environmentally clear and complete the Preliminary Engineering with Options for Design Development (Phase 3) and Engineering Support Services During Construction (Phase 4).
March 22, 2007	Metro Board approves Item No. 35 for staff to negotiate and execute a professional services contract with Iteris Inc. to environmentally clear and complete the preliminary engineering phase.
April 25, 2007	Limited Notice to Proceed issued to Iteris Inc authorizing Phase A - DEIR, Phase B – FEIR, Phase 1 Conceptual Engineering and Phase 2 Preliminary Engineering (18 month duration).
June 26, 2008	Metro Board selects Locally Preferred Alternative and receives Draft Environmental Impact Report.
July 17, 2008	Limited Notice to Proceed Issued to Iteris for PE bridge element only Scope of Work.
August 12, 2008	Commence Preliminary Engineering. Full Notice to Proceed Issued to Iteris.
January 22, 2009	Metro Board Certifies Final EIR, Adopts Project, approves Design-Build contracting approach, and approves engineering services by Iteris, Inc.
January 23, 2009	Issue Limited Notice to Proceed to Iteris Inc. Authorizing Design Development (Phase 3), Selected Final Design and Engineering Support Services During Construction (Phase 4).

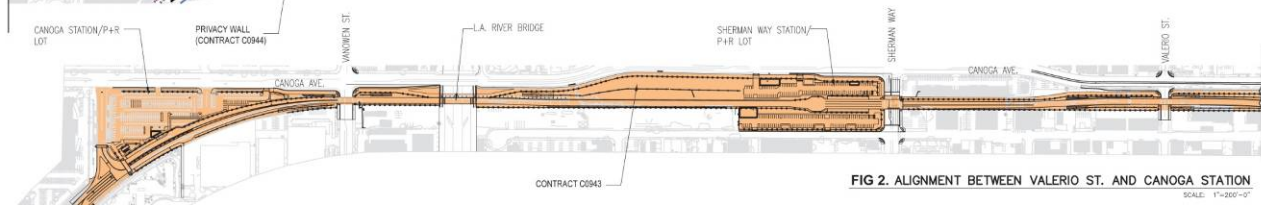
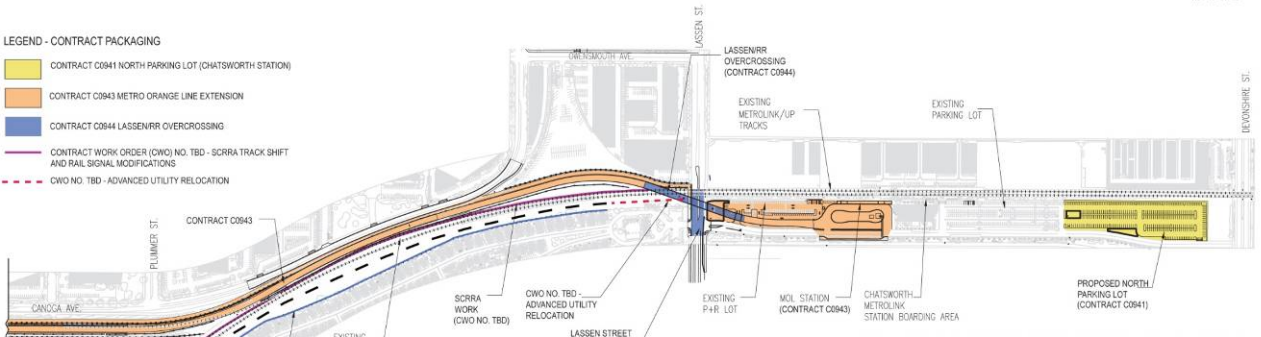
CHRONOLOGY OF EVENTS

March 13, 2009	Metro advertised Contract C0941 North Parking Lot (Chatsworth Station).
March 25, 2009	Submitted application to CPUC for MOL Extension grade separated two lane crossing above and across the railroad tracks near Lassen Street in Chatsworth.
April 6, 2009	First commencement of work at North Parking Lot (Chatsworth Station) was advance utility protection by third party utility company Qwest.
April 10, 2009	Executed Contract Work Order 1.00 to Stantec consulting, Inc for Construction Management Support Services for the MOL Extension. Metro Board awarded Contract MC069 to Stantec Consulting, Inc on February 25, 2009.
April 13, 2009	Metro received seven bids for Contract C0941 North Parking Lot (Chatsworth Station).

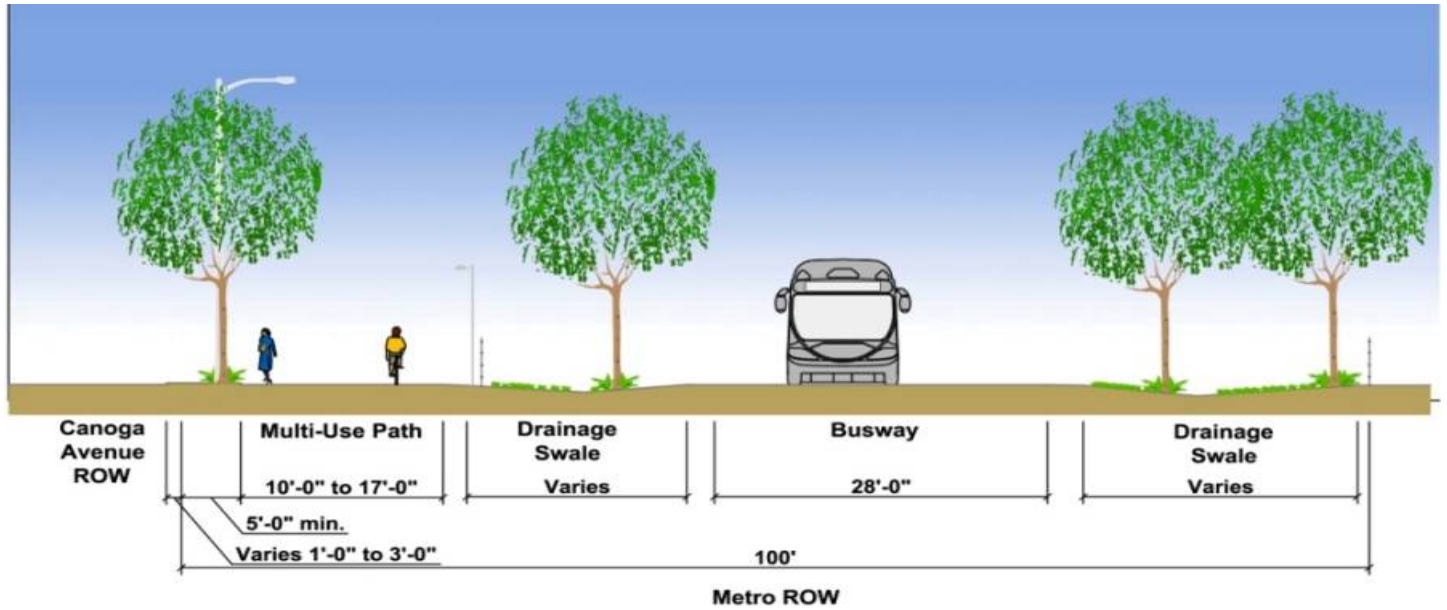
ALIGNMENT ILLUSTRATIONS



- LEGEND - CONTRACT PACKAGING**
- CONTRACT C0941 NORTH PARKING LOT (CHATSWORTH STATION)
 - CONTRACT C0943 METRO ORANGE LINE EXTENSION
 - CONTRACT C0944 LASSEN/RR OVERCROSSING
 - CONTRACT WORK ORDER (CWO) NO. TBD - SCRRRA TRACK SHIFT AND RAIL SIGNAL MODIFICATIONS
 - CWO NO. TBD - ADVANCED UTILITY RELOCATION

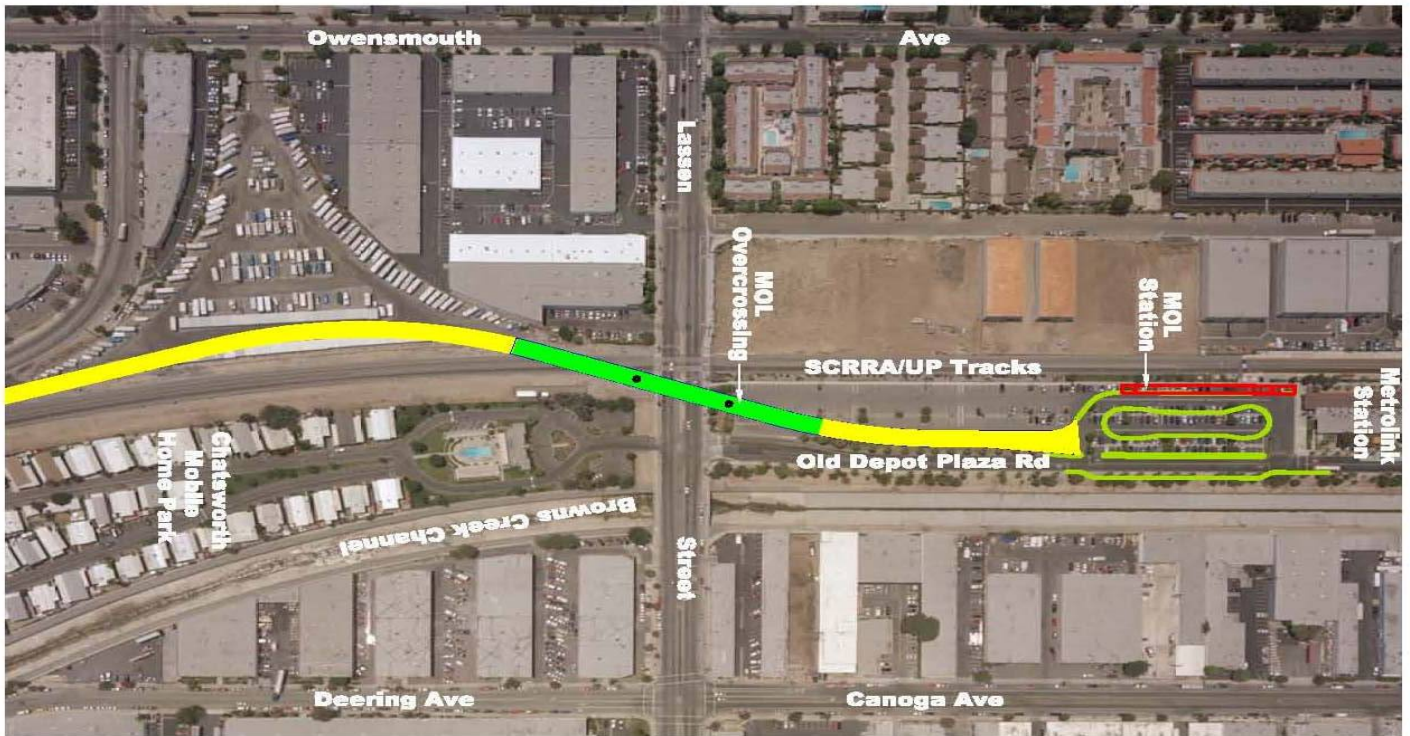


ALIGNMENT ILLUSTRATIONS (Cont'd)



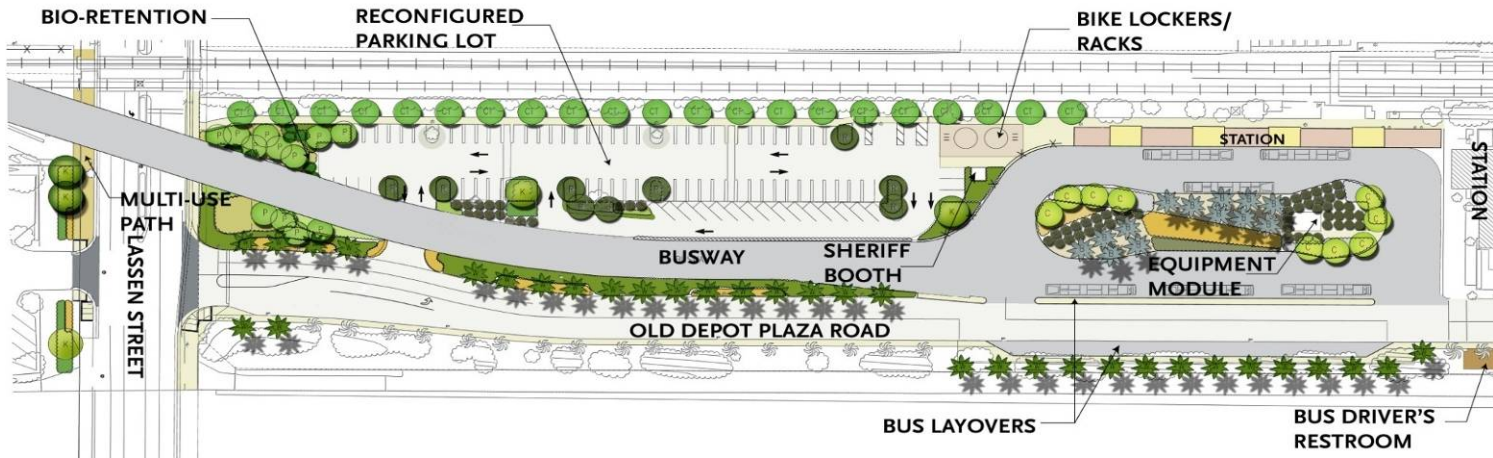
Duplicating features of operating Metro Orange Line.

ALIGNMENT ILLUSTRATIONS (Cont'd)



Lassen Railroad overcrossing location.

ALIGNMENT ILLUSTRATIONS (Cont'd)



Chatsworth Station



APPENDIX COST AND BUDGET TERMINOLOGY

COMMITMENTS: The total of actual contract awards, executed change orders or amendments, approved work orders of Master Cooperative Agreements, offers accepted for purchase of real estate, and other Metro actions which have been spent or result in the obligation of specific expenditures at a future time.

CONSTRUCTION: Costs associated with Guideways, Stations, Support Facilities, Sitework/Special Conditions and Systems.

CONTINGENCY: A fund established at the beginning of a project to provide for anticipated but unknown additional costs that may arise during the course of the project.

CURRENT BUDGET: The Original Budget plus all budget amendments approved by formal Metro action. Also referred to as Approved Budget.

CURRENT FORECAST: Evaluation of costs to go combined with actual expenditures.

EXPENDITURES: The total dollar amount of funds expended by Metro for contractor or consultant invoices, third party invoices, staff salaries, real estate and other expenses that is reported in Metro's Financial Information System (FIS).

ORIGINAL BUDGET: The Original Project Budget as established by Metro Board of Directors at the time it authorizes Construction Project Management Division to commence full design and construction of the project (Project Adoption).

PROFESSIONAL SERVICES: Costs associated with General Engineering, Project Management Assistance, Construction Management Support services, Legal Counsel, Agency (Metro Staff) costs, and other Specialty Consultants.

RIGHT-OF-WAY: Includes purchase cost of parcels, easements, right-of-entry permits, escrow fees, and tenant relocation.

VEHICLES: Costs associated with the purchase of buses for project.

**APPENDIX
LIST OF ACRONYMS**

CADD	Computer Aided Drafting and Design
CALTRANS	California Department of Transportation
CD	Calendar Day
CDFG	California Department of Fish and Game
CM	Construction Manager
CMAC	Congestion Mitigation Air Quality
CN	Change Notice
CO	Change Order
COE	Corps of Engineers
CPM	Critical Path Method
CPUC	California Public Utilities Commission
CR	Camera Ready
CTC	California Transportation Commission
CUD	Contract Unit Description
D-B	Design-Build
D-B-B	Design-Bid-Build
DD	Design Development
DEIR	Draft Environmental Impact Report
DWP	Department of Water and Power
EIR	Environmental Impact Report
EIS	Environmental Impact Statement
FD	Final Design
FEIR	Final Environmental Impact Report
FIS	Financial Information System
FOCT	Fiber Optics Cable Transmission System
FTE	Full Time Equivalent
GDSR	Geotechnical Design Summary Report
IFB	Invitation for Bid
IPO	Integrated Project Office
JV	Joint Venture
LA	Los Angeles
LABOE	Los Angeles Bureau of Engineering
LACFCD	Los Angeles County Flood Control District
LADOT	Los Angeles Department of Transportation
LADPW	Los Angeles Department of Public Works
LADWP	Los Angeles Department of Water and Power
LFAT	Local Field Acceptance Test
LNTP	Limited Notice To Proceed
LONP	Letter Of No Prejudice
LRTP	Long Range Transportation Plan
METRO	Los Angeles County Metropolitan Transportation Authority
MIS	Major Investment Study

**APPENDIX
LIST OF ACRONYMS (Continued)**

MOL	Metro Orange Line
MOL EXT	Metro Orange Line Extension
MPSR	Monthly Project Status Report
N/A	Not Applicable
NTE	Not to Exceed
NTP	Notice To Proceed
OCIP	Owner-Controlled Insurance Program
P6	Primavera Project Planner® (scheduling software)
PC	Project Control
PE	Preliminary Engineering
PIP	Project Implementation Plan
PM	Project Manager
PMA	Project Management Assistance
PMP	Project Management Plan
P&P	Policies & Procedures
PR	Project Report
PSR	Project Study Report
PUC	Public Utilities Commission
QA	Quality Assurance
QAR	Quality Assurance Report
QC	Quality Control
QPSR	Quarterly Project Status Report
RFC	Request For Change
RFP	Request For Proposal
ROD	Revenue Operations Date
ROM	Rough Order of Magnitude
ROW	Right-Of-Way
RR	Railroad
RWQCB	Regional Water Quality Control Board
SCE	Southern California Edison
SCRRA	Southern California Regional Rail Authority (Metrolink)
SFV	San Fernando Valley
SIT	System Integration Testing
SOV	Schedule Of Value
SOW	Statement Of Work
SP	Special Provision
TBD	To Be Determined
UFS	Universal Fare System
VE	Value Engineering
WBS	Work Breakdown Structure
WP	Work Package