

July 2009

# Metro Orange Line Extension



## **TABLE OF CONTENTS**

	Page No.
Project Overview.....	1-2
Management Issues.....	2
Project Status	
• Project Scope.....	3
• Schedule	
○ Key Milestones Six-Month Look Ahead .....	4
○ Summary Schedule.....	5
○ Schedule Narrative .....	6
• Project Cost Status and Analysis.....	7
• Financial/Grant Status.....	8
• Staffing.....	9-10
• Real Estate.....	11
• Environmental.....	12
• Community Relations.....	12
• Quality Assurance.....	13
• Safety.....	13
• Art Development.....	13
• Third Party.....	14-15
• Contract C0941 Status.....	16
Chronology of Events.....	17-19
Alignment Illustrations.....	20-23
Construction Photographs.....	24
Appendices.....	25-27

## **PROJECT OVERVIEW**

*The Metro Orange Line (MOL) Extension Project is a four-mile extension of the Metro Orange Line extending from the Canoga park-and-ride lot to the Chatsworth Metrolink Station. The Project includes: busway, new station platforms at the Canoga park-and-ride lot, new stations at Sherman Way (with park-and-ride), Roscoe Boulevard, Nordhoff Street, and the Chatsworth Metrolink Station (with park-and-ride); grade-separation structure over active railroad tracks and Lassen Street (Lassen/RR Overcrossing) providing direct access into the Chatsworth Metrolink Station; Los Angeles River and Santa Susana Wash bridge crossings; and satellite bus parking facility. The project also includes street improvements, bicycle/pedestrian path, systems equipment and landscaping similar to the MOL.*

With the MTA Board adoption of the MOL Extension Project in January 2009, the Board directed staff to accelerate the completion of the Project to summer 2012.

A key design milestone by Iteris, Inc is nearing completion with their substantial completion in late July 2009 of the final design of the Lassen/RR Overcrossing and Lassen street improvements. Iteris, Inc. is addressing final review comments for both Overcrossing and Lassen Street improvements from the affected agencies and plans to obtain approval from Metrolink and the City of Los Angeles in August. With this accomplishment and the extension granted for the bid opening in response to bidders request, MTA will add the final design of the Lassen/RR Overcrossing and Lassen street into the Contract C0943 Design-Build Invitation for Bid (IFB) documents to realize construction efficiencies. With the planned amendment incorporating the final design planned in August, MTA has rescheduled the Contract C0943 bid opening to September 24, 2009. MTA also plans to add in the Contract C0943 IFB documents, the underground conduit work required to relocate overhead power lines in Lassen Street upon receipt of design from LADWP (Power).

Construction continues on Contract C0941 North Parking Lot (Chatsworth Station) with forecast to complete on schedule in late October 2009. Metrolink patrons will then use this north parking lot while Metro closes the Metrolink Station south parking lot for use as a staging area for the design-build contractor to construct the overcrossing and new Chatsworth BRT station, and complete the Lassen Street improvements.

MTA continues to coordinate with Metrolink, CPUC and City of Los Angeles for the improvements and enhancements for the at-grade rail crossing on Lassen Street. MTA has issued Work Orders to Metrolink for track and signal facility design services, design review of the Lassen/RR Overcrossing and other planned improvements adjacent to active tracks, and procurement of long lead item signal equipment. Removal of the interfering signal equipment and realignment of the existing railroad track are required to be substantially completed prior to construction of a critical overcrossing column.

MTA has issued Work Orders to, and continues discussions with, Los Angeles Department of Water and Power (LADWP) and the affected utility companies for relocating interfering power, fiber optic and communication lines which are required to be completed prior to construction of a critical overcrossing column. LADWP continues underground conduit/vault final design of the underground relocation of power lines on Lassen Street.

## **PROJECT OVERVIEW**

MTA continues with the real estate actions required for the Project including lease terminations, right of entry/easement acquisitions in the Union Pacific property, and agreement with the Chatsworth Mobile Home Park for the privacy fence and easements.

Other departments within MTA will be securing equipment required to be used on the MOL Extension. The equipment includes universal fare collection (UFS) and articulated vehicle procurement. An item will be going to the MTA Board later this year for approval to procure UFS equipment for the project via an existing consultant. In addition, staff is reviewing a proposed timeline to procure additional required buses prior to revenue operations in summer 2012.

To date, the expenditures are \$1.7 million or 0.8% of the \$216.5 million Original Budget. The \$19.6 million in commitments to date represent 9.1% of the Original Budget.

## **MANAGEMENT ISSUES**

**Concern No. 1:** Agreement with Metrolink and completion of advance rail modification work.

**Status/Action** Metrolink work, which includes signal modification, track realignment and at-grade Lassen Street crossing is to be completed by Metrolink prior to construction of the critical components of the overcrossing. Metrolink ordered the new rail signal and other equipment with a long delivery lead time on July 27, 2009. Once an agreement for the construction of the relocated facilities is reached, this will allow Metrolink to replace existing equipment which interferes with the overcrossing columns by February 2010.

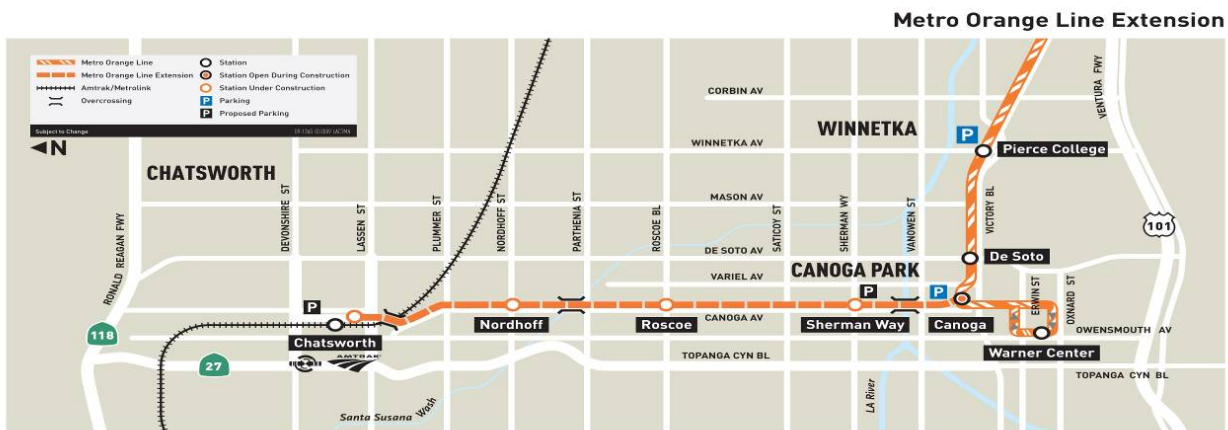
MTA and Metrolink continued this month to finalize the Work Order Agreement for all Metrolink work. Still under discussion are the final scope, cost, schedule and potential betterments.

**Concern No. 2:** Agreement with LADWP and Time Warner and completion of advance relocation of power, fiber optic and communication lines at Lassen Street.

**Status/Action** LADWP continues the underground conduit/vault final design with anticipated completion in late August 2009. MTA will incorporate this design, by amendment, into the Contract C0943 scope of work. Actual construction of the conduit work will commence after contractor's notice to proceed. LADWP will then relocate the overhead wires and remove interfering poles prior to the construction of portions of overcrossing by the C0943 contractor.

**PROJECT SCOPE**

**C0943: Metro Orange Line Extension (MOL Ext)** is a design-build contract to construct the majority of the Project scope of work. This contract will include design and construction of busway, new stations at Sherman Way (with park-and-ride), Roscoe Boulevard, Nordhoff Street, and Chatsworth Metrolink Station (with park-and-ride). The existing MOL Canoga park-and-ride lot will be modified with new station platforms. In addition, the contractor will design and construct approaches to the Lassen/RR Overcrossing, a bridge over the Los Angeles River, a smaller bridge over the Santa Susana Wash, street improvements, bicycle/pedestrian path, satellite bus parking facility, landscaping, systems equipment, and system integration and testing. In August 2009, the Lassen/RR Overcrossing (500' long 3-span bridge over active railroad tracks/Lassen Street) and Lassen Street Improvements will be added to this Contract.







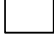
**C0941: North Parking Lot (Chatsworth Station)** is a construction contract for a new parking lot to be constructed north of the existing Chatsworth Metrolink Station. Completion of this lot is required before the south parking lot is modified to ensure that parking is continuously available for Metrolink patrons during construction of the MOL Extension.

**Work Order – Advance SCRR (Metrolink) Rail Signal Modifications, Track Realignment, and At-Grade Lassen Crossing Enhancements** is to be substantially completed by Metrolink in advance of the Design-Build Contractor commencing construction of a critical overcrossing column.

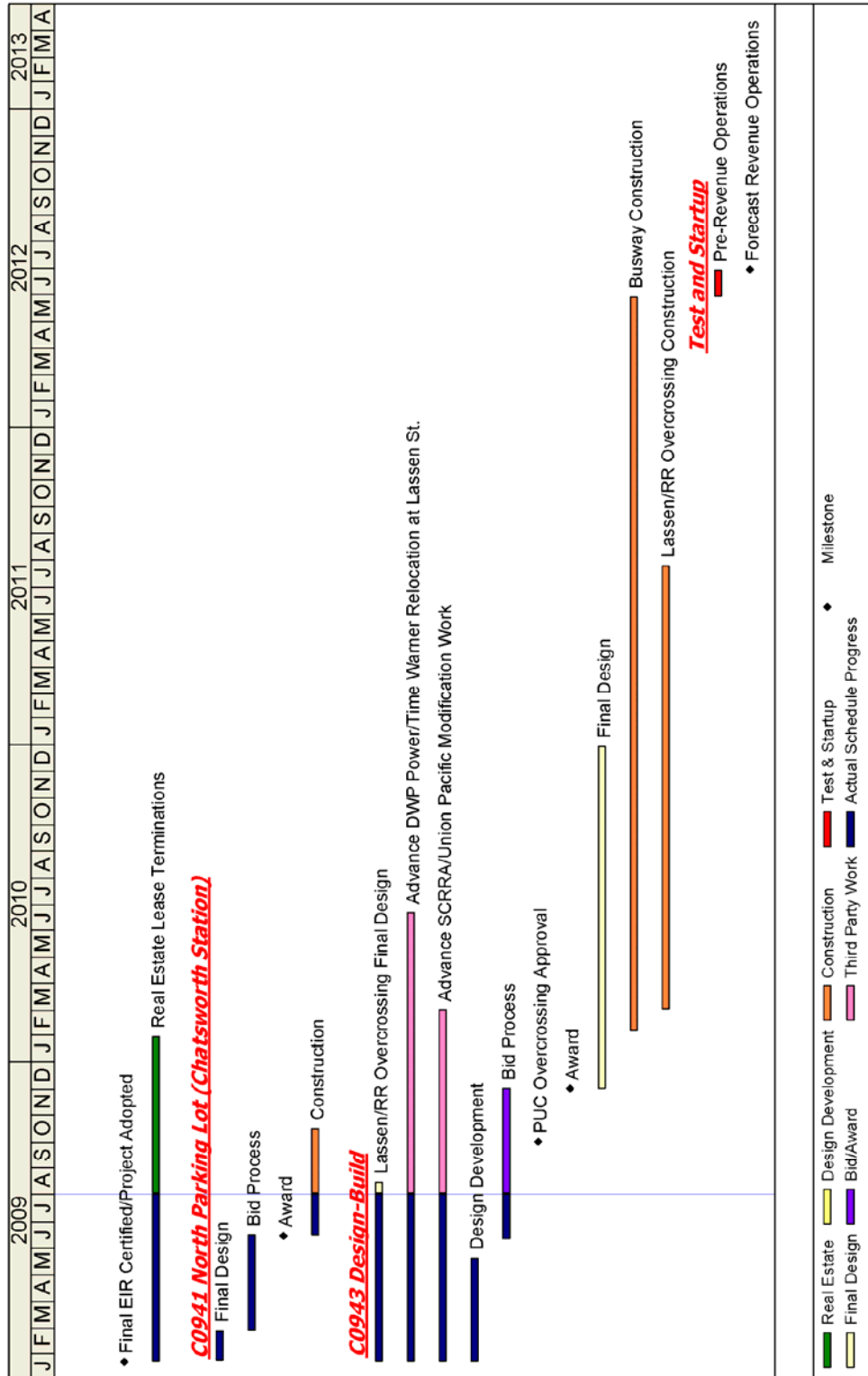
**Work Order - Advance Relocation of power, fiber optic and communication lines on Lassen Street** is to be completed by LADWP and the affected utility companies prior to the Design-Build Contractor commencing construction of a critical overcrossing column and bridge over Lassen Street.

**KEY MILESTONE SCHEDULE SIX-MONTH LOOK AHEAD**

	Milestone Date	Jul-09	Aug-09	Sep-09	Oct-09	Nov-09	Dec-09
Metrolink Order Long Lead Signal Equipment	7/27/09A	△					
(Forecast) DWP Underground Power Design on Lassen Street Complete	8/31/09		△				
(Forecast) C0943: Bid Opening	9/24/09*			◆			
(Forecast) C0944: CPUC Overcrossing Approval	9/24/09			△			
(Forecast) C0941: North Parking Lot Substantial Completion	10/16/09				◆		
(Forecast) C0943: Award	11/5/09*					◆	
(Forecast) C0943: NTP	12/1/09*						◆

	MTA Staff		MTA Design Consultant		MTA Board Action
	Other Agencies		Contractor	*	New Date

## SUMMARY SCHEDULE



## **SCHEDULE NARRATIVE**

The project critical path starts with completing the negotiations and executing an agreement with Metrolink to complete early advance work, such as removal of interfering signal equipment, realigning existing railroad track, and at-grade rail crossing safety enhancements at Lassen Street prior to construction of the Lassen/RR Overcrossing. Also critical is the concurrent relocation of the interfering LADWP and Time Warner Cable overhead power and communication lines along Lassen Street prior to construction of the Lassen/RR Overcrossing.

The critical path continues with the actual construction of the overcrossing bridge structure followed by completing the bridge approaches, installing the fiber optic cable transmission system (FOCT) and followed by systems equipment to be installed at all the stations. This and local field acceptance testing (LFAT) will mark the end of construction and the beginning of final systems integration. The critical path concludes with systemwide acceptance testing, pre-revenue operations, and the start of revenue operation.



**PROJECT COST STATUS - 800119**

**COST REPORT BY ELEMENT**  
UNITS IN MILLIONS

ELEM- MENT	DESCRIPTION	ORIGINAL BUDGET	CURRENT BUDGET		COMMITMENTS		EXPENDITURES		CURRENT FORECAST		FORECAST VARIANCE
			PERIOD	TO DATE	PERIOD	TO DATE	PERIOD	TO DATE	PERIOD	TO DATE	
C	CONSTRUCTION	137.3	-	137.3	1.6	3.3	-	-	-	137.3	-
R	RIGHT-OF-WAY	8.0	-	8.0	3.7	3.7	-	-	-	8.0	-
V	VEHICLES / BUSES	9.9	-	9.9	-	-	-	-	-	9.9	-
P	PROFESSIONAL SERVICES	38.7	-	38.7	5.3	12.6	0.9	1.7	-	38.7	-
PC	PROJECT CONTINGENCY	21.7	-	21.7	-	-	-	-	-	21.7	-
PR	PROJECT REVENUE	-	-	-	-	-	-	-	-	-	-
<b>TOTAL</b>		<b>215.6</b>	<b>-</b>	<b>215.6</b>	<b>10.6</b>	<b>19.6</b>	<b>0.9</b>	<b>1.7</b>	<b>-</b>	<b>215.6</b>	<b>-</b>

NOTE: EXPENDITURES ARE CUMULATIVE THROUGH JUNE 2009.

**PROJECT COST ANALYSIS**

**Original Budget and Current Budget:**

The Life of Project Budget for the Metro Orange Line Extension Project was adopted in January 2009 for a value of \$215.6 million.

**Current Forecast:**

The total project forecast remains the same at \$215.6 million.

**Commitments:**

The commitments increased \$10.6 million this period due to FY10 MTA Board approved budget, third party scope of work, and engineering consultant services. The Construction element increased by \$1.6 million due to third party scope of work with the City of Los Angeles and Southern California Regional Rail Authority. In the Right-Of-Way element there was an increase of \$3.7 million. In the Professional Services element there was an increase of \$3.8 for MTA Project Administration, \$0.9 million for design engineering consultant services, and \$0.6 million for specialty services. The \$19.6 million in commitments to date represents 9.1% of the Original Budget.

**Expenditures:**

Expenditures are cumulative through June 2009. The expenditures increased by \$0.9 million this period primarily for costs associated with Design Engineering Consultant, MTA Project Administration, and Construction Management Support. The \$1.7 million in expenditures to date represents less than 1% of the current budget.

**FINANCIAL/GRANT STATUS**

**Project 800119 – Metro Orange Line Extension**

**JULY 2009**

**STATUS OF FUNDS BY SOURCE**

\$ in millions

SOURCE	(A)	(B)	(C)	(D)	(D/B)	(E)	(E/B)	(F)	(F/B)
	ORIGINAL	TOTAL	TOTAL	COMMITMENTS		EXPENDITURES		BILLED to FUNDING	SOURCE
	BUDGET	FUNDS	FUNDS	\$	%	\$	%	\$	%
	(1)	ANTICIPATED	AVAILABLE						
	(2)								
PROP 1B FUNDS-PTMISEA*	68.0	68.0	8.9	19.6	29%	1.7	2%		0%
PROP 1B FUNDS-SLTPP**	73.8	73.8			0%		0%		0%
PROP C 25%	73.8	73.8			0%		0%		0%
<b>TOTAL</b>	<b>215.6</b>	<b>215.6</b>	<b>8.9</b>	<b>19.6</b>	<b>9%</b>	<b>1.7</b>	<b>1%</b>	<b>0.0</b>	<b>0%</b>

(1) Based on January 2009 MTA Board adoption of Life of Project Budget.

(2) Based on March 2009 Capital Programming Revised Financial Plan.

\* PTMISEA: Public Transportation Modernization and Improvement Surface Enhancement Account

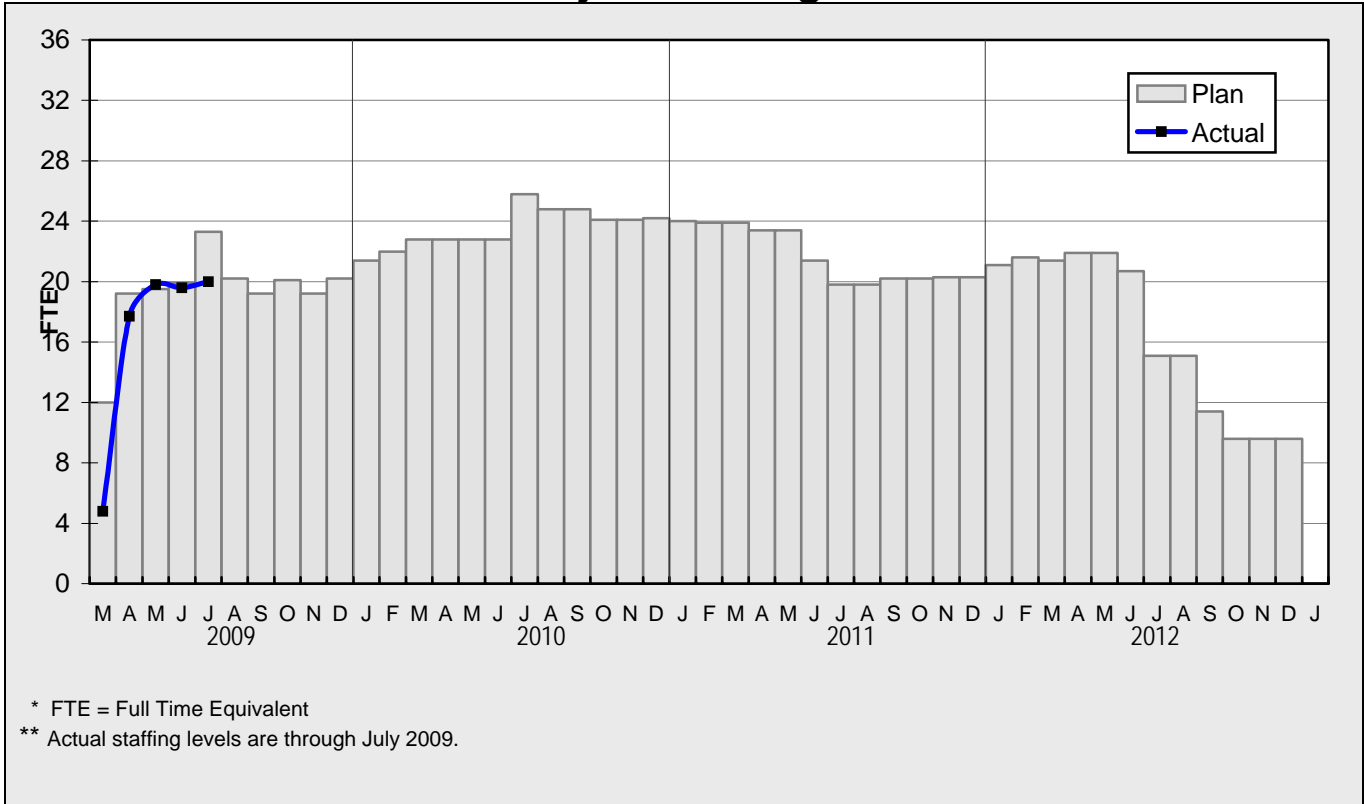
\*\* SLTPP: State - Local Transportation Partnership Program

NOTE: Expenditures are cumulative through June 2009.

**STATUS OF FUNDS ANTICIPATED**

**STATE PROP 1B – PTMISEA:** Metro submitted a state application for \$8.9 million in September 2008. The State approved the \$8.9 million application in March 2009. Funds have been received in July 2009 and are available for drawdown.

**STAFFING STATUS  
Total Project Staffing - FTES**

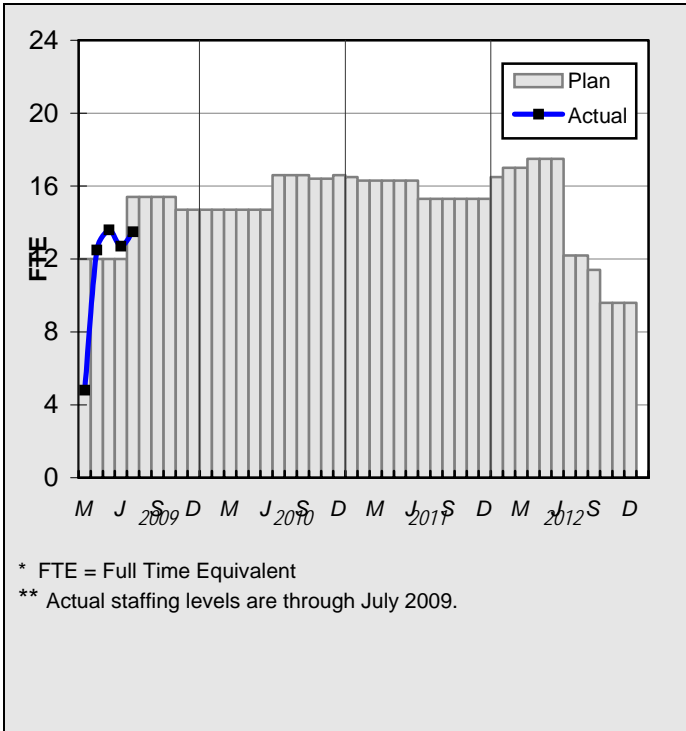


**Total Project Staffing**

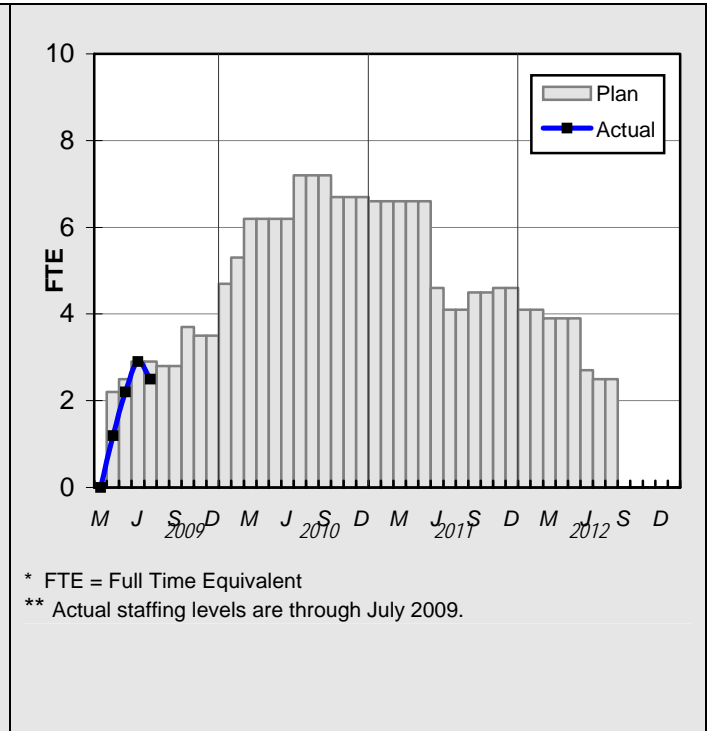
The overall FY10 Total Project Staffing plan averages 22.0 FTE's per month. For July 2009, there was a total 13.5 FTE's for MTA Project Administration staff and 6.5 FTE's for consulting staff. The total project staffing was 20.0 FTE's for July 2009.

**STAFFING STATUS**

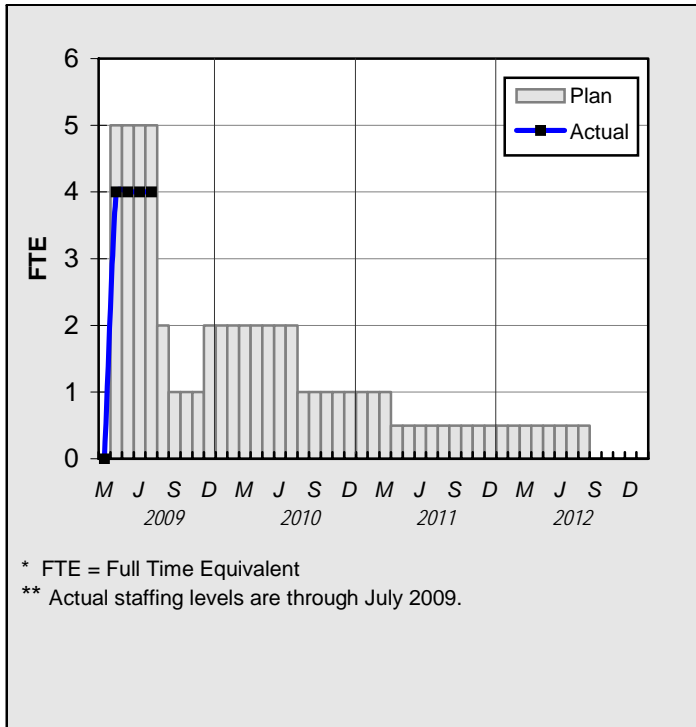
**AGENCY STAFFING**



**CONSTRUCTION MANAGEMENT  
SUPPORT SERVICES CONSULTANT**



**DESIGN CONSULTANT**



**REAL ESTATE STATUS**

- There are a total of 82 leases and 7 Licenses on the MOL Extension Project. The number of leases that will be terminated is 78 and the number of Licenses that will be relocated is 2. Four (4) tenants will be permitted to remain on the right-of-way; three tenants with amended leases which will permit them to co-exist with the busway and one under existing lease.
- The total leases to be terminated include 23 signboard leases and 55 ground leases. The change in the number of ground leases is due to a comprehensive review and count of the signboard which resulted in a reduction of 2 signboards.
- Termination Notices have been issued to 78 Tenants: The tenants are in various stages of relocating from the ROW.
- Paragon Partners was initially assigned to work with 13 pre-acquisition tenants and 13 post-acquisition tenants to provide relocation assistance to determine their business needs, relocation preferences, and eligibility for relocation benefits under state law. Subsequent investigation reduced their assignment to 8 pre-acquisition tenants. Five of the original pre-acquisition tenants were subsequently determined to be post-acquisition tenants.
- Agreement has been reached with the Chatsworth Mobile Home Park (CMHP) owners for the construction of a privacy fence along the Union Pacific Railroad (UP) right-of-way and dedication of easements for the bikeway and traffic signal. Agreement will be executed in August and construction will start after receipt of a right-of-entry from Union Pacific to the CMHP contractor.
- Discussions are underway with UP for right-of-entry and easements required for construction of facilities within UP property.
- Staff is following up with the tenants who have received termination notices to offer relocation advisory services.

**REAL ESTATE STATUS – LEASES**

	Total Leases	Total Leases to be Terminated	Received Termination Notice	Unlawful Detainer Action	Relocation Completed	Available for Demolition	Available for Construction
Leases	82	78	78	10	20	20	20

## **ENVIRONMENTAL STATUS**

- Held discussions with the Department of Toxic Substances Control concerning the conduct and criteria of removal efforts and the clearance process after contaminated and hazardous soil removal.
- Began asbestos and lead assessment of identified structures along the alignment.

## **COMMUNITY RELATIONS STATUS**

- Continued community mapping and business profiles.
- Participated in a briefing with the City of Los Angeles Board of Public Works Commission.
- Continue to respond to community comments and questions regarding project.

**QUALITY ASSURANCE STATUS**

C0941:

- Coordinated with Metrolink flagger and monitored installation of fencing between parking lot and Metrolink tracks.
- Metro Construction Material Laboratory was used for testing soils compaction and concrete.
- The following work elements were monitored during the period:
  - Storm drains
  - Light pole foundations and conduits
  - Irrigation piping and conduits
  - Excavation of biocells for storm water treatment

**QUALITY ACTION REQUEST STATUS**

Project #	QAR #	Description	Due Date	Status	Comments
C0941					
C0943					
C0944					

**SAFETY STATUS**

- Status to be reported once a construction contract has commenced.

Contractor	Project To Date										
	Work-Hours	Cases			Days Lost			Incident Rates			
		Total Cases	Total Lost Time	Retricted Duty	Current	Carry Over	Total	Total Cases	Total Lost Time	Retricted Duty	Days Lost
C0941	0	0.0	0.0	0.0	0.0	0.0	0.0	0.0	0.0	0.0	0.0
C0943	0	0.0	0.0	0.0	0.0	0.0	0.0	0.0	0.0	0.0	0.0
C0944	0	0.0	0.0	0.0	0.0	0.0	0.0	0.0	0.0	0.0	0.0
Subtotals	0	0.0	0.0	0.0	0.0	0.0	0.0	0.0	0.0	0.0	0.0
Metro Cons. Mgm	0	0.0	0.0	0.0	0.0	0.0	0.0	0.0	0.0	0.0	0.0
Totals	0	0.0	0.0	0.0	0.0	0.0	0.0	0.0	0.0	0.0	0.0

**ART DEVELOPMENT STATUS**

- Status to be reported once the design-build construction contract has commenced.

**THIRD PARTY AGREEMENT STATUS**

<b>Third Party</b>	<b>Type of Agreement</b>	<b>Forecast Execution Date</b>	<b>Required Need Date</b>	<b>Status/ Comments</b>
City of Los Angeles	Amendment	12/02	N/A	Executed December 2002. Contract Work Order was first issued in August 2008. Special Permitting Process (SPP) was drafted by City in April 2009 and was approved in July 2009.
Los Angeles County	Master	Completed	N/A	Executed April 2003.
LADWP (Water/Power)	Amendment	12/09	12/09	Work Orders for critical work issued under current MCA. Authorization received from MTA Board in June 2009 for new Work Order Agreements. An amendment is in draft form to be negotiated.
The Gas Company	Amendment	Completed	N/A	Executed May 2005.
AT&T Long Distance	Amendment	Completed	N/A	Executed May 2005. (Formerly PacBell)
TCG Los Angeles, Inc.	Agreement	Completed	N/A	Executed May 2005.
AT&T California	Amendment	Completed	N/A	Executed May 2005. Contract Work Order was first issued in February 2009.
Qwest	Agreement	Completed	N/A	Contract Work Order was first issued in February 2009. Authorization received from MTA Board in July for new Work Order Agreement.
L.A. County Department of Public Works/L.A. County Flood Control District	Agreement	Completed	N/A	Agreement executed 1991 between SCRTD and LA County Flood Control District.
MCI Worldcom	Amendment	Completed	N/A	Executed May 2005. Contract Work Order was first issued in February 2009.
Verizon Wireless (Verizon Business (MCI))	Amendment	Completed	N/A	Executed May 2005. (MCI)
SCRRA (Metrolink)	Agreement	9/09	9/09	Work Order authorized in January 2009 to accelerate Project. Authorization received from MTA Board in May 2009 for new Work Order Agreements. Agreement to be finalized and executed.
UPRR	Agreement	Completed	N/A	Executed June 1989. Work Order Authorized in February 2009.
Level 3 Communications	Agreement	Completed	N/A	Executed May 2005.



**THIRD PARTY AGREEMENT STATUS ( Contd)**

Time Warner Cable	Agreement	10/09	10/09	MTA Board authorization of new Work Order Agreements is planned in October 2009.
MWD	Agreement	Completed	N/A	Cooperative Agreement for Long Beach-LA Rail System December 1986. A May 2003 letter from MTA concurs that no additional MWD amendment is required. Both agencies will review submittals upon request without charge, unless protection, relocation and/or adjustments are required.

**CONTRACT C0941 STATUS**

<p><b>North Parking Lot Chatsworth Station</b> <b>Contractor: Sully-Miller Contracting Co.</b></p>	<p><b>Contract No.: C0941</b></p> <p><b>Status as of: July 31, 2009</b></p>					
<p><b>Progress/Work Completed:</b> Major submittals completed this period:</p> <ol style="list-style-type: none"> <li>1. Electrical lighting submittals.</li> <li>2. Chain-link fencing submittals.</li> <li>3. Site utility submittals.</li> <li>4. Landscape and irrigation submittals.</li> </ol> <p>· Completed rough grading. Began light pole procurement.</p> <p><b>Areas of Concern:</b></p>	<p><b>Major Activities (In Progress):</b></p> <ul style="list-style-type: none"> <li>· Submittal Reviews are substantially complete.</li> <li>· Chain-link fencing is nearing completion.</li> <li>· Storm drain installation is in progress.</li> </ul> <p><b>Major Activities Next Period:</b></p> <ul style="list-style-type: none"> <li>· Complete construction submittals.</li> <li>· Complete storm drain installation.</li> <li>· Complete lighting conduit installation.</li> <li>· Begin A.C. paving.</li> </ul>					
		Original Contract Dates	Time Extension	Current Contract	Forecast	Variance CDs
	Milestone 1 - Contract Completion	10/16/09	0	10/16/09	10/16/09	0
<p><b>Schedule Summary:</b></p> <p>Date of Award: 06/02/09</p> <p>Notice to Proceed: 06/18/09</p> <p>Original Contract Duration: 120</p> <p>Current Contract Duration: 120</p> <p>Elapsed Time from NTP: 43</p>	<p><b>Cost Summary:</b> <span style="float: right;"><b>\$ In 000's</b></span></p> <p>1. Award Value: 1,286.80</p> <p>2. Executed Modifications: 0.00</p> <p>3. Approved Change Orders: 0.00</p> <p>4. Current Contract Value (1 + 2 + 3): 1,286.80</p> <p>5. Pending Changes: 0.00</p> <p>6. Incurred Cost: 0.00</p>					

## **CHRONOLOGY OF EVENTS**

1990	MTA purchased abandoned railroad right-of-way.
April 1, 2003	Regionally Significant Transportation Investment Study (RSTIS) completed and approved by MTA Board.
September 28, 2006	MTA Board authorized the Chief Executive Officer to begin environmental clearance and Preliminary Engineering for a northern extension of the Metro Orange Line along the MTA-owned Canoga Avenue rail right-of-way to the Chatsworth Metrolink Station.
November 7, 2006	MTA issues RFP No. PS43701952 for Northern/Canoga Extension of the Metro Orange Line to solicit Contractor to environmentally clear and complete the Preliminary Engineering with Options for Design Development (Phase 3) and Engineering Support Services During Construction (Phase 4).
March 22, 2007	MTA Board approves Item No. 35 for staff to negotiate and execute a professional services contract with Iteris Inc. to environmentally clear and complete the preliminary engineering phase.
April 25, 2007	Limited Notice to Proceed issued to Iteris Inc authorizing Phase A - DEIR, Phase B – FEIR, Phase 1 Conceptual Engineering and Phase 2 Preliminary Engineering (18 month duration).
June 26, 2008	MTA Board selects Locally Preferred Alternative and receives Draft Environmental Impact Report.
July 17, 2008	Limited Notice to Proceed Issued to Iteris for PE bridge element only Scope of Work.
August 12, 2008	Commence Preliminary Engineering. Full Notice to Proceed Issued to Iteris.
September 10 and 15, 2008	Field meetings with City of Los Angeles staff to review field conditions and items to be included in preliminary Engineering (PE).
October 7, 2008	Field diagnostic meeting with SCRRA, CPUC and City of Los Angeles on at-grade rail crossing on Lassen Street and the bridge overcrossing.
November 7, 2008	Submitted pre-final PE drawings to third party agencies and utility companies for review and comments.

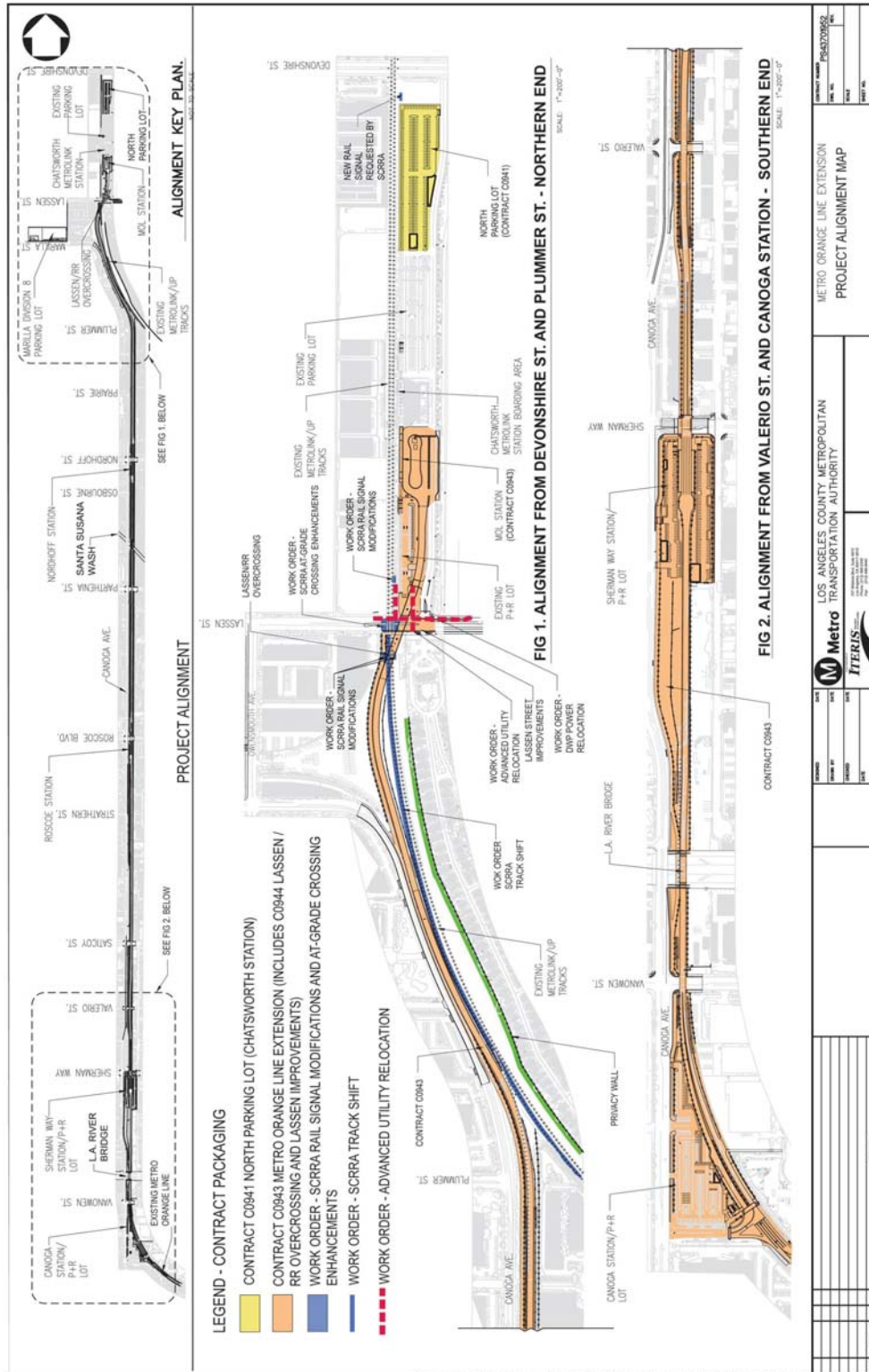
## **CHRONOLOGY OF EVENTS**

January 22, 2009	MTA Board Certifies Final EIR, Adopts Project, approves Design-Build contracting approach, and approves engineering services by Iteris, Inc.
January 23, 2009	Issue Limited Notice to Proceed to Iteris Inc. Authorizing Design Development (Phase 3), Selected Final Design and Engineering Support Services During Construction (Phase 4).
February 19, 2009	Submitted draft Design-Build Contract C0943 documents to third party agencies and utility companies for review and comments.
March 3, 2009	Submitted 65% design drawings for Lassen Street improvements to third party agencies and utility companies for review and comments.
March 5, 2009	Executed Contract Modifications to Iteris, Inc. for engineering services including final design of selected elements.
March 13, 2009	Advertised Contract C0941 North Parking Lot (Chatsworth Station).
March 25, 2009	Submitted application to CPUC for MOL Extension grade separated two lane crossing above and across the railroad tracks near Lassen Street in Chatsworth.
April 6, 2009	First commencement of work at North Parking Lot (Chatsworth Station) was advance utility protection by third party utility company Qwest.
April 10, 2009	Executed Contract Work Order 1.00 to Stantec consulting, Inc for Construction Management Support Services for the MOL Extension. MTA Board awarded Contract MC069 to Stantec Consulting, Inc on February 25, 2009.
April 13, 2009	Received seven bids for Contract C0941 North Parking Lot (Chatsworth Station).
April 24, 2009	Submitted 85% design drawings for Lassen Street improvements to third party agencies and utility companies for review and comments.
May 5, 2009	Submitted 65% design drawings for Lassen/RR Overcrossing bridge structure to SCRRRA, UP, City of Los Angeles and other affected third party agencies and utility companies for review and comments. Also, initiated independent design check of the bridge structure.

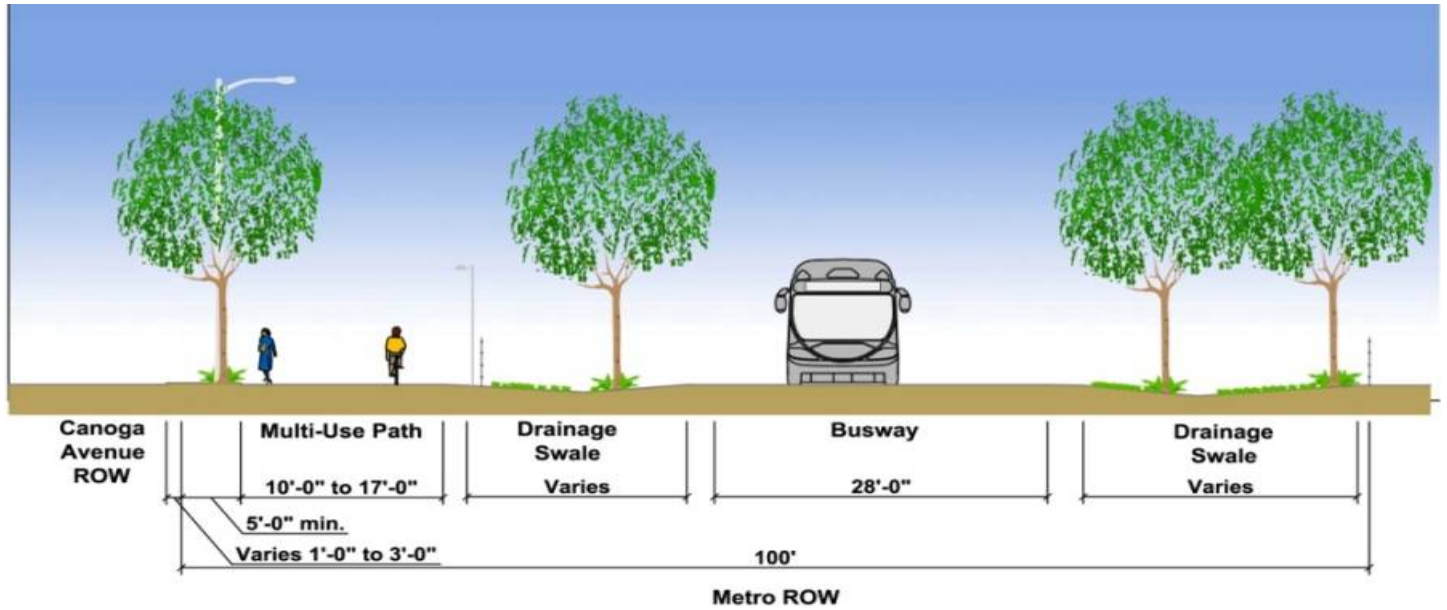
## **CHRONOLOGY OF EVENTS**

May 7, 2009	Received for second time, bids for Contract C0941 North Parking Lot due to non-responsive bids received on April 13, 2009.
June 2, 2009 and June 18, 2009	Awarded Contract C0941 North Parking Lot (Chatsworth Station) and issued notice-to-proceed to Sully-Miller Contracting Company.
June 12, 2009	Advertised Contract C0943 Design-Build.
June 24, 2009	Held MOL Extension Project ground breaking ceremony at North Parking Lot site near Chatsworth Metrolink Station.
July 1, 2009	Conducted Contract C0943 pre-bid meeting.
July 6, 2009	Iteris submitted 100% design for Lassen Street improvements to LADOT, BOE, and BSL for review.
July 20, 2009	Iteris submitted final bridge design of Lassen overcrossing to SCRRA, PUC and City of Los Angeles for review.
July 21, 2009	Issued Contract C0943 Amendment #2 to all bidders.
July 27, 2009	SCRRA ordered long lead signal equipment.

# ALIGNMENT ILLUSTRATIONS

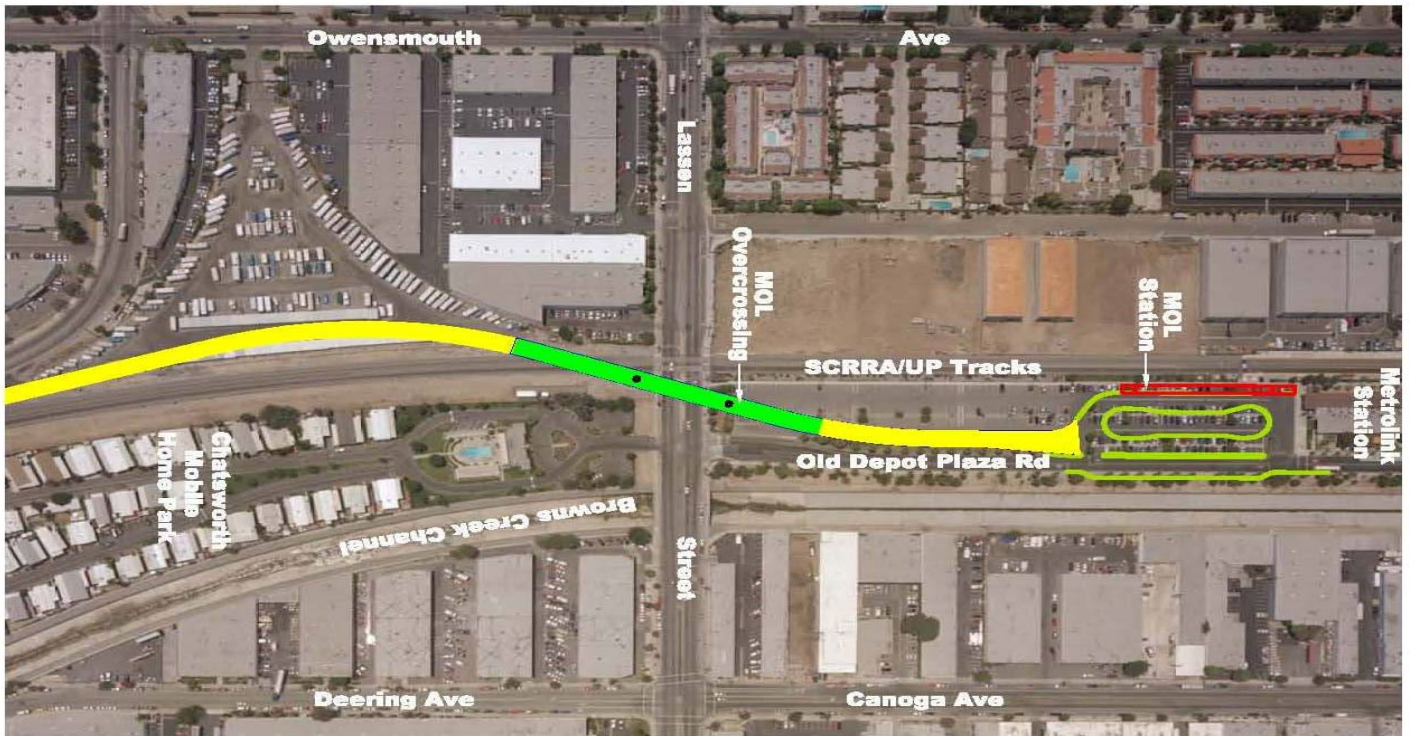


### ALIGNMENT ILLUSTRATIONS (Cont'd)



Duplicating features of operating Metro Orange Line.

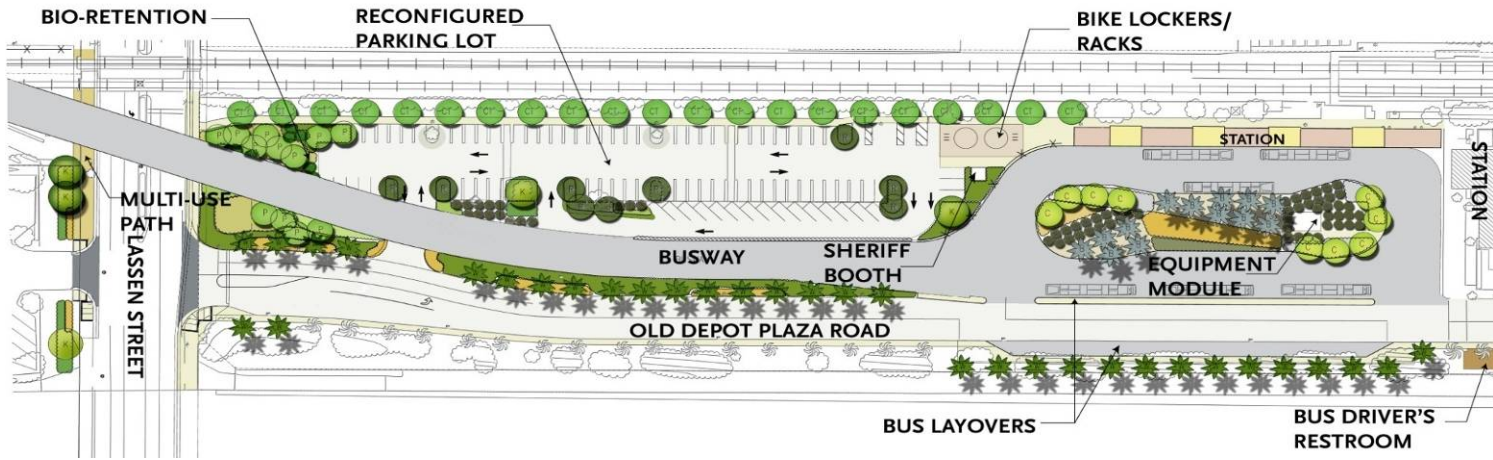
### ALIGNMENT ILLUSTRATIONS (Cont'd)



Lassen Railroad overcrossing location.



### ALIGNMENT ILLUSTRATIONS (Cont'd)



Chatsworth Station



## **CONSTRUCTION PHOTOGRAPHS**



C0941 North Parking Lot Sully-Miller Contracting Co. constructing bioinfiltration facility for water quality mitigation measures.

## **APPENDIX COST AND BUDGET TERMINOLOGY**

**COMMITMENTS:** The total of actual contract awards, executed change orders or amendments, approved work orders of Master Cooperative Agreements, offers accepted for purchase of real estate, and other Metro actions which have been spent or result in the obligation of specific expenditures at a future time.

**CONSTRUCTION:** Costs associated with Guideways, Stations, Support Facilities, Sitework/Special Conditions and Systems.

**CONTINGENCY:** A fund established at the beginning of a project to provide for anticipated but unknown additional costs that may arise during the course of the project.

**CURRENT BUDGET:** The Original Budget plus all budget amendments approved by formal Metro action. Also referred to as Approved Budget.

**CURRENT FORECAST:** Evaluation of costs to go combined with actual expenditures.

**EXPENDITURES:** The total dollar amount of funds expended by Metro for contractor or consultant invoices, third party invoices, staff salaries, real estate and other expenses that is reported in Metro's Financial Information System (FIS).

**ORIGINAL BUDGET:** The Original Project Budget as established by Metro Board of Directors at the time it authorizes Construction Project Management Division to commence full design and construction of the project (Project Adoption).

**PROFESSIONAL SERVICES:** Costs associated with General Engineering, Project Management Assistance, Construction Management Support services, Legal Counsel, Agency (Metro Staff) costs, and other Specialty Consultants.

**RIGHT-OF-WAY:** Includes purchase cost of parcels, easements, right-of-entry permits, escrow fees, and tenant relocation.

**VEHICLES:** Costs associated with the purchase of buses for project.

**APPENDIX  
LIST OF ACRONYMS**

CADD	Computer Aided Drafting and Design
CALTRANS	California Department of Transportation
CD	Calendar Day
CDFG	California Department of Fish and Game
CM	Construction Manager
CMAC	Congestion Mitigation Air Quality
CN	Change Notice
CO	Change Order
COE	Corps of Engineers
CPM	Critical Path Method
CPUC	California Public Utilities Commission
CR	Camera Ready
CTC	California Transportation Commission
CUD	Contract Unit Description
D-B	Design-Build
D-B-B	Design-Bid-Build
DD	Design Development
DEIR	Draft Environmental Impact Report
DWP	Department of Water and Power
EIR	Environmental Impact Report
EIS	Environmental Impact Statement
FD	Final Design
FEIR	Final Environmental Impact Report
FIS	Financial Information System
FOCT	Fiber Optics Cable Transmission System
FTE	Full Time Equivalent
GDSR	Geotechnical Design Summary Report
IFB	Invitation for Bid
IPO	Integrated Project Office
JV	Joint Venture
LA	Los Angeles
LABOE	Los Angeles Bureau of Engineering
LACFCD	Los Angeles County Flood Control District
LADOT	Los Angeles Department of Transportation
LADPW	Los Angeles Department of Public Works
LADWP	Los Angeles Department of Water and Power
LFAT	Local Field Acceptance Test
LNTP	Limited Notice To Proceed
LONP	Letter Of No Prejudice
LRTP	Long Range Transportation Plan
METRO	Los Angeles County Metropolitan Transportation Authority
MIS	Major Investment Study

**APPENDIX  
LIST OF ACRONYMS (Continued)**

MOL	Metro Orange Line
MOL EXT	Metro Orange Line Extension
MPSR	Monthly Project Status Report
N/A	Not Applicable
NTE	Not to Exceed
NTP	Notice To Proceed
OCIP	Owner-Controlled Insurance Program
P6	Primavera Project Planner® (scheduling software)
PC	Project Control
PE	Preliminary Engineering
PIP	Project Implementation Plan
PM	Project Manager
PMA	Project Management Assistance
PMP	Project Management Plan
P&P	Policies & Procedures
PR	Project Report
PSR	Project Study Report
QA	Quality Assurance
QAR	Quality Assurance Report
QC	Quality Control
QPSR	Quarterly Project Status Report
RFC	Request For Change
RFP	Request For Proposal
ROD	Revenue Operations Date
ROM	Rough Order of Magnitude
ROW	Right-Of-Way
RR	Railroad
RWQCB	Regional Water Quality Control Board
SCE	Southern California Edison
SCRRA	Southern California Regional Rail Authority (Metrolink)
SFV	San Fernando Valley
SIT	System Integration Testing
SOV	Schedule Of Value
SOW	Statement Of Work
SP	Special Provision
TBD	To Be Determined
UFS	Universal Fare System
VE	Value Engineering
WBS	Work Breakdown Structure
WP	Work Package