

Metro Orange Line Extension

June 2009



Metro™

TABLE OF CONTENTS

	Page No.
Project Overview.....	1-2
Management Issues.....	2-3
Project Status	
• Project Scope.....	4
• Schedule	
○ Key Milestones Six-Month Look Ahead	5
○ Summary Schedule.....	6
○ Schedule Narrative	7
• Project Cost Status and Analysis.....	8
• Financial/Grant Status.....	9
• Staffing.....	10-11
• Real Estate.....	12
• Environmental.....	13
• Community Relations.....	13
• Quality Assurance.....	14
• Safety.....	14
• Art Development.....	14
• Third Party.....	15-16
• Contract C0941 Status.....	17
Chronology of Events.....	18-20
Alignment Illustrations.....	21-24
Construction Photographs.....	25
Appendices.....	26-28

PROJECT OVERVIEW

The Metro Orange Line (MOL) Extension Project is a four-mile extension of the Metro Orange Line extending from the Canoga park-and-ride lot to the Chatsworth Metrolink Station. The Project includes: busway, new station platforms at the Canoga park-and-ride lot, new stations at Sherman Way (with park-and-ride), Roscoe Boulevard, Nordhoff Street, and the Chatsworth Metrolink Station (with park-and-ride); grade-separation structure over active railroad tracks and Lassen Street (Lassen/RR Overcrossing) providing direct access into the Chatsworth Metrolink Station; Los Angeles River and Santa Susana Wash bridge crossings; and satellite bus parking facility. The project also includes street improvements, bicycle/pedestrian path, systems equipment and landscaping similar to the MOL.

With the MTA Board adoption of the MOL Extension Project in January 2009, the Board directed staff to accelerate the completion of the Project. Staff has taken actions to complete design for the critical component of the Project, which includes the grade separated bridge over active railroad tracks and Lassen Street. This is in lieu of the design-build contractor starting final design up to eight months later and having to work out significant issues with SCRRA (Metrolink), Union Pacific Railroad (UP), California Public Utilities Commission (CPUC), City of Los Angeles and utility companies.

Iteris, Inc. continues developing the final design of Contract C0944 Lassen/RR Overcrossing and is addressing review comments from Metrolink, City of Los Angeles, UP, CPUC, MTA and utility companies.

Iteris, Inc. completed the technical documents for the design-build Contract C0943 bid package consisting of majority of the Project work, including busway, stations, two bridges, approaches for the Lassen/RR Overcrossing, bikeway, parking lots, landscaping and systems. The solicitation package was advertised on June 12, 2009.

MTA held ground breaking ceremony at North Parking Lot site near Chatsworth Metrolink Station.

Construction of Contract C0941 North Parking Lot (Chatsworth Station) commenced on June 18 and will complete in late October 2009. Metrolink patrons will then use this north parking lot while Metro closes a portion of the Metrolink Station south parking lot for use as a staging area for the Overcrossing contractor to construct the bridge and complete the Lassen Street improvements.

MTA continues to coordinate with Metrolink, CPUC and City of Los Angeles for the improvements and enhancements for the at-grade rail crossing on Lassen Street. MTA has issued a Work Order to Metrolink for track and signal facility design and relocation services, and design review of the Lassen/RR Overcrossing. Removal of the interfering signal equipment and realignment of the existing railroad track are required to be substantially completed prior to construction of the bridge.

PROJECT OVERVIEW

MTA has issued Work Orders to, and continues discussions with, Los Angeles Department of Water and Power (LADWP) and the affected utility companies for relocating interfering power, fiber optic and communication lines which are required to be completed prior to construction of the bridge. LADWP continues design of the underground relocation of power lines on Lassen Street.

MTA continues with the real estate actions required for the Project including lease terminations, right of entry/easement acquisitions in the Union Pacific property, and agreement with the Chatsworth Mobile Home Park for the privacy fence and easements.

MANAGEMENT ISSUES

Concern No. 1: Agreement with Metrolink and completion of advance rail modification work.

Status/Action Metrolink must substantially complete signal modification and track realignment work prior to construction of the bridge. MTA has issued a Work Order to Metrolink to initiate this work on January 27, 2009 and a draft Construction and Maintenance Agreement on February 20, 2009. Metrolink has advised that new rail signal control equipment with a long delivery lead time will be required to replace existing equipment which interferes with the proposed bridge column. MTA Board authorized negotiation and execution of work order agreements in May 2009.

First concern is that SCRRA has not yet provided a list of long delivery lead items so that these can be placed on order, and avoid delays in procuring the equipment and completing the rail signal relocation work prior to the start of Lassen/RR Overcrossing. Second concern is that SCRRA is suggesting additional scope as part of the Project to improve the at-grade rail crossing at Lassen Street. MTA will identify betterments after SCRRA provides clear scope of work. Third concern is the amount of time required to execute agreement - SCRRA rejected MTA's draft agreement and provided a different version on April 20, 2009.

MTA continues to coordinate with Metrolink to order the long delivery lead items and to finalize the scope, betterments, costs and schedule.

Concern No. 2: Agreement with LADWP and Time Warner and completion of advance relocation of power, fiber optic and communication lines at Lassen Street.

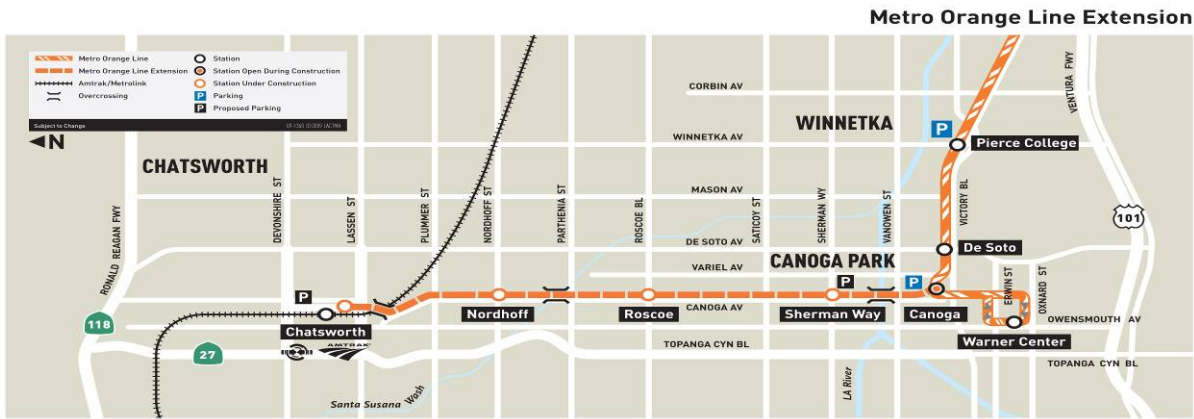
Status/Action The relocation of power lines at Lassen Street is required prior to the construction of the bridge. LADWP has provided two options, one for underground and another for overhead relocation. The underground option is preferred, however, the concern is that LADWP has significantly increased the scope of work and costs for the underground relocation and estimated one year to design and complete the relocation work. MTA

MANAGEMENT ISSUES

directed LADWP to proceed with the underground option. To expedite the relocation work, LADWP has agreed to provide the underground conduit/vault final design to Metro to include this work in the bid documents for MTA's contractor to complete so that LADWP can relocate the overhead wires and remove interfering poles prior to the start of Lassen/RR Overcrossing construction. LADWP's final design is anticipated in August 2009.

PROJECT SCOPE

C0943: Metro Orange Line Extension (MOL Ext) is a design-build contract to construct the majority of the Project scope of work. This contract will include design and construction of busway, new stations at Sherman Way (with park-and-ride), Roscoe Boulevard, Nordhoff Street, and Chatsworth Metrolink Station (with park-and-ride). The existing MOL Canoga park-and-ride lot will be modified with new station platforms. In addition, the contractor will design and construct approaches to the Lassen/RR Overcrossing, a bridge over the Los Angeles River, a smaller bridge over the Santa Susana Wash, street improvements, bicycle/pedestrian path, satellite bus parking facility, landscaping, systems equipment, and system integration and testing.



C0941: North Parking Lot (Chatsworth Station) is a construction contract for a new parking lot to be constructed north of the existing Chatsworth Metrolink Station. Completion of this lot is required before the south parking lot is modified to ensure that parking is continuously available for Metrolink patrons during construction of the MOL Extension.

C0944: Lassen/RR Overcrossing is a construction contract for a grade separation that carries the busway over active railroad tracks and Lassen Street, and descends into the north terminus of the alignment at the Chatsworth Metrolink Station site. Scope of work includes construction of a 500' long 3-span bridge (excluding approaches), improvements along Lassen Street with a new traffic signal at Old Depot Plaza Road, and improvements to the Lassen Street at-grade crossing of the railroad tracks.


Contract Work Order – Advance SCRRRA (Metrolink) Rail Signal Modification & Track Realignment is to be substantially completed by Metrolink in advance of MTA's award of construction Contract C0944 Lassen/RR Overcrossing.

Contract Work Order - Advance Relocation of power, fiber optic and communication lines on Lassen Street is to be completed by LADWP and the affected utility companies prior to Contract C0944 Lassen/RR Overcrossing contractor commencing construction over Lassen St.

* Other contracting strategies will be considered for the inclusion of C0944 work in C0943 Contract. This decision will be dependant on the progress of final design of the C0944 and progress of advance SCRRRA and LADWP work.

KEY MILESTONE SCHEDULE SIX-MONTH LOOK AHEAD

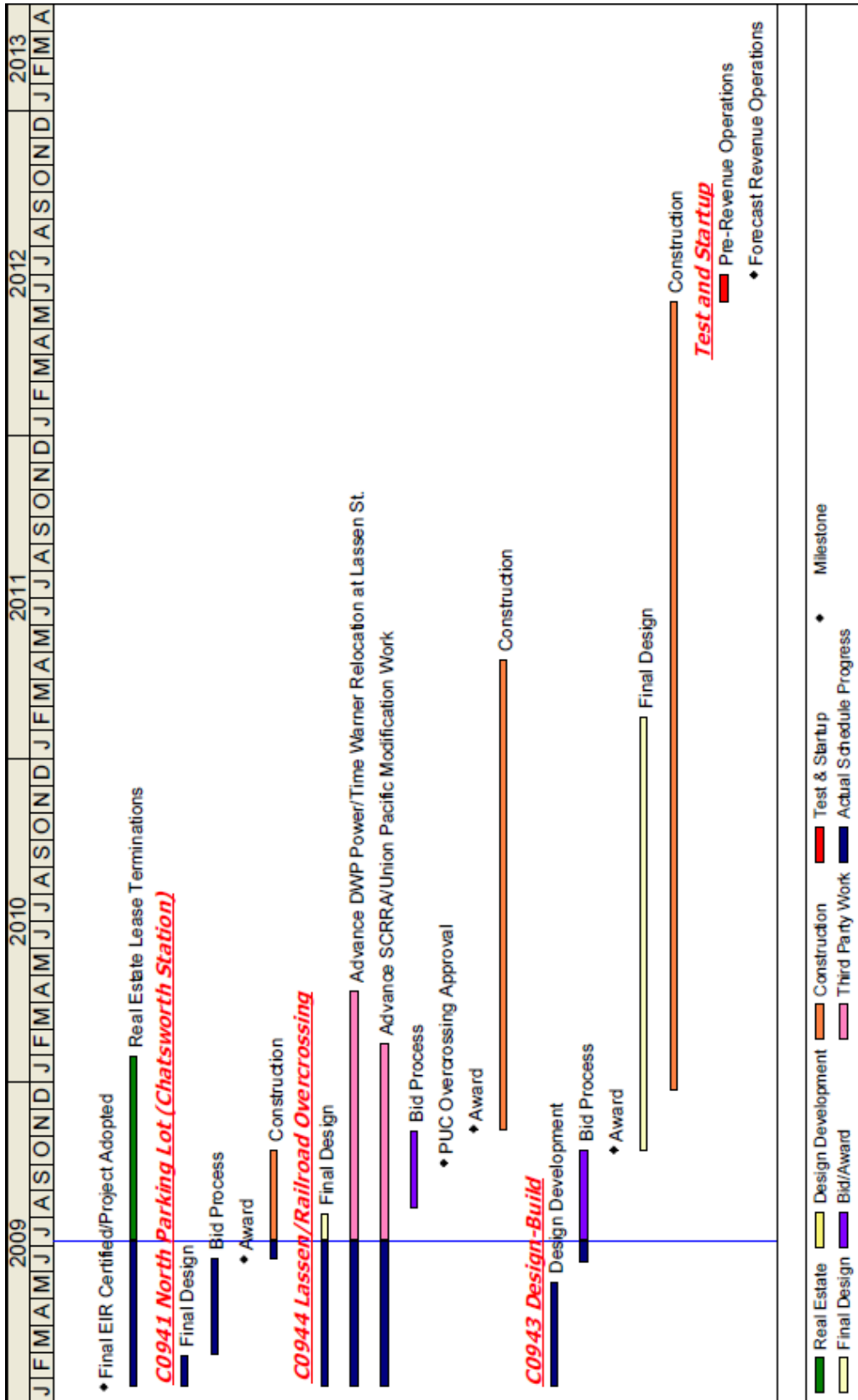
	Milestone Date	Jun-09	Jul-09	Aug-09	Sep-09	Oct-09	Nov-09
C0941: Award	6/2/09A	◆					
C0943: Advertise	6/12/09A	◆					
C0941: Issue NTP Construction	6/18/09A	◆					
C0941: Ground Breaking	6/24/09A	◆					
(Forecast) Metrolink Order Long Lead Signal Equipment	7/13/09*		△				
(Forecast) C0944: Advertise (Note A)	8/12/09*			◆			
(Forecast) C0943: Bid Opening (Note A)	8/13/09			◆			
(Forecast) DWP Underground Power Design on Lassen Street Complete	8/31/09*			△			
(Forecast) C0944: Bid Opening (Note B)	9/12/09*				◆		
(Forecast) C0944: CPUC Overcrossing Approval	9/24/09				△		
(Forecast) C0943: Award (Note B)	9/25/09				◆		
(Forecast) C0941: North Parking Lot Substantial Completion	10/16/09*					◆	
(Forecast) C0943: NTP (Note B)	10/16/09					◆	
(Forecast) C0944: NTP (Note B)	11/7/09						◆

◆	MTA Staff	○	MTA Design Consultant		MTA Board Action
△	Other Agencies	□	Contractor	*	New Date

Note A - Will be delayed if C0944 Work is included in C0943 and/or delays in advance relocation work.

Note B - May be delayed if advance relocation Work is delayed.

SUMMARY SCHEDULE



SCHEDULE NARRATIVE

The project critical path starts with completing the negotiations and executing an agreement with Metrolink to complete early advance work, such as removal of interfering signal equipment, realigning existing railroad track, and at-grade rail crossing safety enhancements at Lassen Street prior to construction of the Lassen/RR Overcrossing. Also critical is the concurrent relocation of the interfering LADWP and Time Warner Cable overhead power and communication lines along Lassen Street prior to construction of the Lassen/RR Overcrossing. All agreements to be completed and construction schedule to be agreed before the award of the Lassen/RR Overcrossing construction contract.

The critical path continues with the actual construction of the overcrossing bridge structure leading to the turnover of the structure to the design-builder to complete the remaining scope of work. The critical path switches to the design-builder completing the bridge approaches and installing the fiber optic cable transmission system (FOCT) followed by systems equipment to be installed at all the stations. This and local field acceptance testing (LFAT) will mark the end of construction and the beginning of final systems integration. The critical path concludes with systemwide acceptance testing, pre-revenue operations, and the start of revenue operation.

PROJECT COST STATUS - 800119

**COST REPORT BY ELEMENT
UNITS IN MILLIONS**

ELEM- MENT	DESCRIPTION	ORIGINAL BUDGET	CURRENT BUDGET		COMMITMENTS		EXPENDITURES		CURRENT FORECAST		FORECAST VARIANCE
			PERIOD	TO DATE	PERIOD	TO DATE	PERIOD	TO DATE	PERIOD	TO DATE	
C	CONSTRUCTION	137.3	-	137.3	-	1.7	-	-	-	137.3	-
R	RIGHT-OF-WAY	8.0	-	8.0	-	-	-	-	-	8.0	-
V	VEHICLES / BUSES	9.9	-	9.9	-	-	-	-	-	9.9	-
P	PROFESSIONAL SERVICES	38.7	-	38.7	0.1	7.3	0.6	0.8	-	38.7	-
PC	PROJECT CONTINGENCY	21.7	-	21.7	-	-	-	-	-	21.7	-
PR	PROJECT REVENUE	-	-	-	-	-	-	-	-	-	-
TOTAL		215.6	-	215.6	0.1	9.0	0.6	0.8	-	215.6	-

NOTE: EXPENDITURES ARE CUMULATIVE THROUGH MAY 2009.

PROJECT COST ANALYSIS

Original Budget and Current Budget:

The Life of Project Budget for the Metro Orange Line Extension Project was adopted in January 2009 for a value of \$215.6 million.

Current Forecast:

The total project forecast remains the same at \$215.6 million.

Commitments:

The commitments increased \$0.1 million this period due to construction lab testing scope of work and community outreach consultant services during construction. The \$9.0 million in commitments to date represents 4.2% of the Original Budget.

Expenditures:

Expenditures are cumulative through May 2009. The expenditures increased by \$0.6 million this period primarily for costs associated with project administration and the design consultant. The \$0.8 million in expenditures to date represents less than 1% of the current budget. A majority of the design consultant costs for design development and final design are not reflected in expenditures for Project 800119 as these are funded from the balance of previously authorized Planning Phase funds (Project 405513) as mentioned in the January 2009 Board Report for authorization of Iteris' work.

FINANCIAL/GRANT STATUS

Project 800119 – Metro Orange Line Extension

JUNE 2009

STATUS OF FUNDS BY SOURCE

\$ in millions

SOURCE	(A)	(B)	(C)	(D)	(D/B)	(E)	(E/B)	(F)	(F/B)
	ORIGINAL BUDGET (1)	TOTAL FUNDS ANTICIPATED (2)	TOTAL FUNDS AVAILABLE	COMMITMENTS \$	%	EXPENDITURES \$	%	BILLED to FUNDING SOURCE \$	%
PROP 1B FUNDS-PTMISEA*	68.0	68.0		9.0	13%	0.8	1%		0%
PROP 1B FUNDS-SLTPP**	73.8	73.8			0%		0%		0%
PROP C 25%	73.8	73.8			0%		0%		0%
TOTAL	215.6	215.6	0.0	9.0	4%	0.8	0.04%	0.0	0%

(1) Based on January 2009 MTA Board adoption of Life of Project Budget.

(2) Based on March 2009 Capital Programming Revised Financial Plan.

* PTMISEA: Public Transportation Modernization and Improvement Surface Enhancement Account

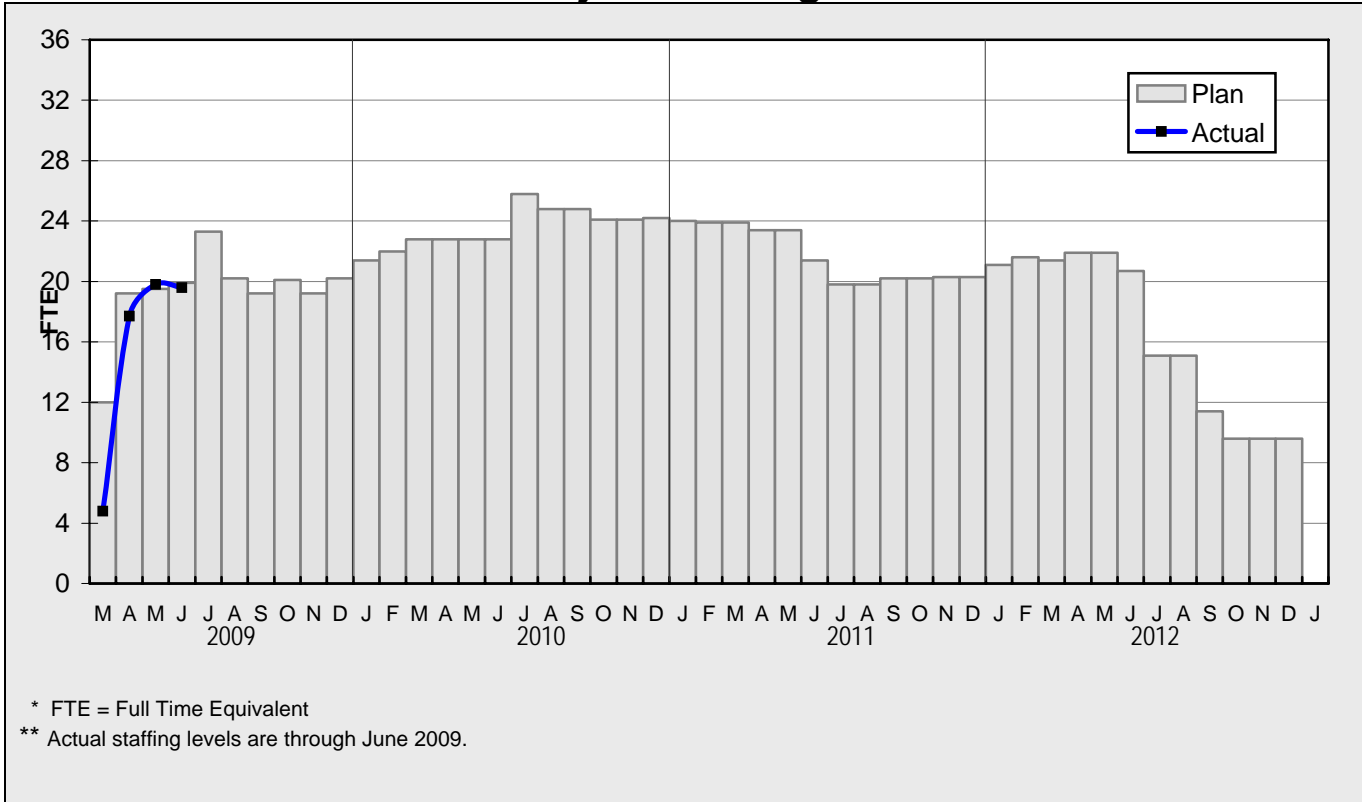
** SLTPP: State - Local Transportation Partnership Program

NOTE: Expenditures are cumulative through May 2009.

STATUS OF FUNDS ANTICIPATED

STATE PROP 1B – PTMISEA: MTA submitted a state application for \$8.6 million in September 2008. The State approved the \$8.6 million application in March 2009. However, the funds are frozen until further notice.

**STAFFING STATUS
Total Project Staffing - FTES**

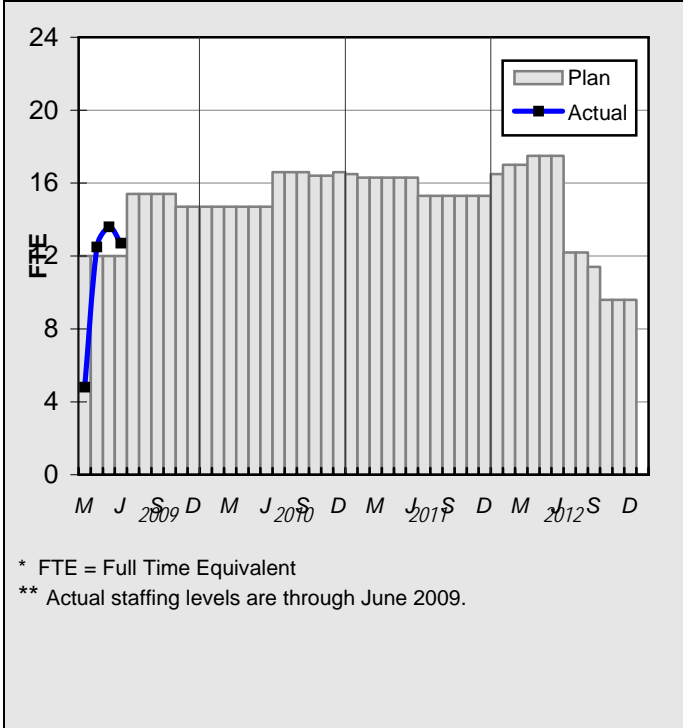


Total Project Staffing

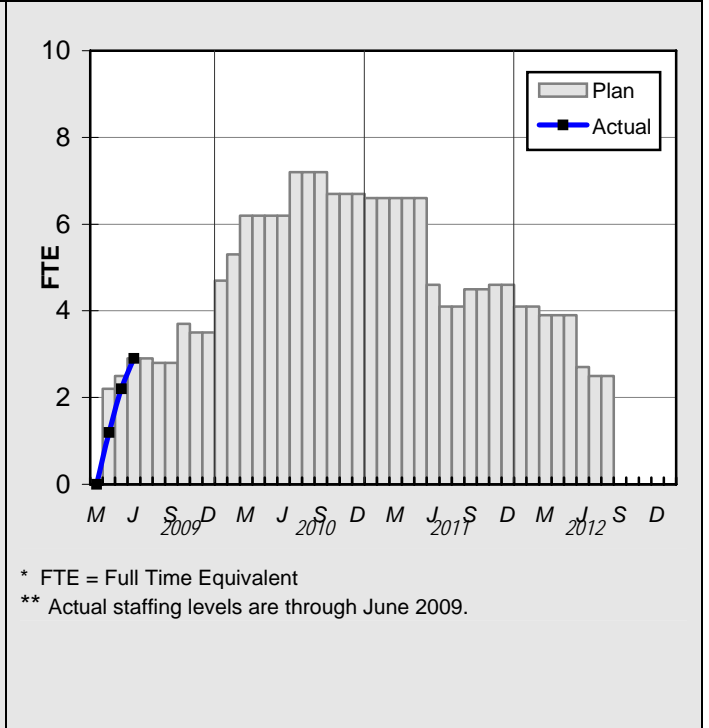
The overall FY09 Total Project Staffing plan averages 17.0 FTE's per month. For June 2009, there was a total 12.7 FTE's for MTA agency staff and 6.9 FTE's for consulting staff. The total project staffing was 19.8 FTE's for June 2009.

STAFFING STATUS

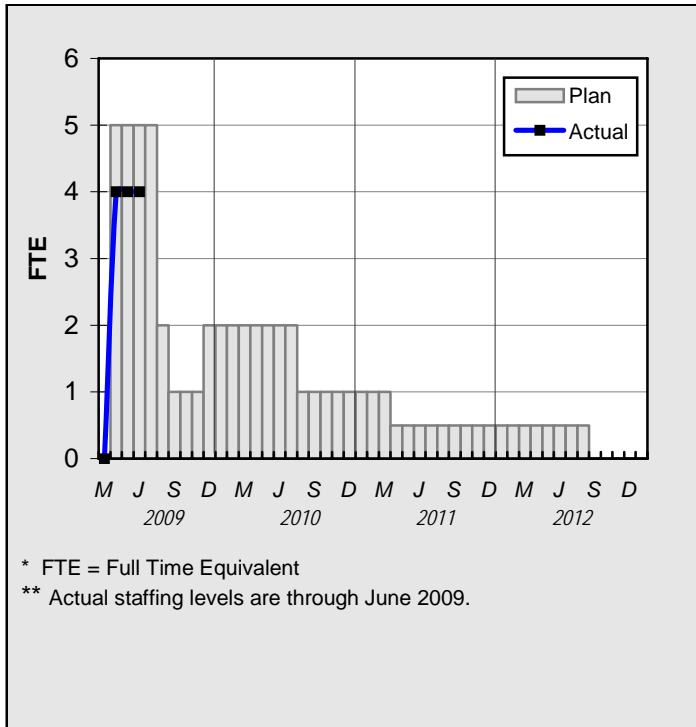
AGENCY STAFFING



**CONSTRUCTION MANAGEMENT
SUPPORT SERVICES CONSULTANT**



DESIGN CONSULTANT



REAL ESTATE STATUS

- There are a total of 84 leases and 7 Licenses on the MOL Extension Project. The number of leases that will be terminated is 80 and the number of Licenses that will be relocated is 2. Four (4) tenants will be permitted to remain on the right of way; three tenants with amended leases which will permit them to co-exist with the busway and one under existing lease.
- The total leases to be terminated include 24 signboard leases and 56 ground leases. Four leases will be permitted to remain.
- Termination Notices have been issued to 56 Tenants: 50 Notices are effective August 15, 2009 and 6 Notices are effective September 1, 2009.
- Notices were issued to the twenty-four outdoor advertising sign (24) leases in June 2009.
- Paragon Partners is working with the 13 pre-acquisition tenants and 13 post-acquisition tenants to provide relocation assistance to determine their business needs, relocation preferences, and eligibility for relocation benefits under state law.
- Discussions are underway with the Chatsworth Mobile Home Park owners for the construction of a privacy fence along the Union Pacific Railroad (UP) right of way and dedication of easements for the bikeway and traffic signal.
- Discussions are underway with UP for right-of-entry and easements required for construction of facilities within UP property.
- Staff is following up with the tenants who have received termination notices to offer relocation advisory services.

REAL ESTATE STATUS – LEASES

	Total Leases	Total Leases to be Terminated	Received Termination Notice	Unlawful Detainer Action	Relocation Completed	Available for Demolition	Available for Construction
Leases	84	80	80	0	0	0	0

ENVIRONMENTAL STATUS

- Reviewed Voluntary Clean-Up Agreement with the California Department of Toxic Substances Control regarding disposition of soils along the MOL Extension alignment.
- Procuring task orders to delineate extent of soil contamination at several severely impacted locations along the alignment.
- Developed protocols for the conduct of soil cement mixture leaching test to determine feasibility of in situ cement soil mixture treatment as a viable alternative for soil excavation, hauling and disposal option.
- Completed asbestos and lead assessments to supplement existing environmental dataset.

COMMUNITY RELATIONS STATUS

- Held Groundbreaking Ceremony.
- Briefed Supervisor Mike Antonovich's office and elected officials on upcoming lease terminations and real estate relocations.
- Participated in a briefing with Metrolink and the City of Los Angeles Department of Transportation regarding Lassen Street Improvements.
- Participated in the Valley Industry Commerce Association's San Fernando Valley Business Hall of Fame Dinner.

QUALITY ASSURANCE STATUS

- Supported project groundbreaking for C0941 North Parking Lot at Chatsworth Station.
- Monitored ongoing Contractor grading activities for North Parking Lot.
- Coordinated Ninyo and Moore Test laboratory for parking lost soils compaction testing.
- Took photographs of encroachments on the alignment at National Ready Mixed Concrete Company and Catalina Pacific Concrete.

QUALITY ACTION REQUEST STATUS

Project #	QAR #	Description	Due Date	Status	Comments
C0941					
C0943					
C0944					

SAFETY STATUS

- Status to be reported once a construction contract has commenced.

Contractor	Work-Hours	Project To Date										
		Cases			Days Lost			Incident Rates				
		Total Cases	Total Lost Time	Retricted Duty	Current	Carry Over	Total	Total Cases	Total Lost Time	Retricted Duty	Days Lost	
C0941	0	0.0	0.0	0.0	0.0	0.0	0.0	0.0	0.0	0.0	0.0	0.0
C0943	0	0.0	0.0	0.0	0.0	0.0	0.0	0.0	0.0	0.0	0.0	0.0
C0944	0	0.0	0.0	0.0	0.0	0.0	0.0	0.0	0.0	0.0	0.0	0.0
Subtotals	0	0.0	0.0	0.0	0.0	0.0	0.0	0.0	0.0	0.0	0.0	0.0
Metro Cons. Mgm	0	0.0	0.0	0.0	0.0	0.0	0.0	0.0	0.0	0.0	0.0	0.0
Totals	0	0.0	0.0	0.0	0.0	0.0	0.0	0.0	0.0	0.0	0.0	0.0

ART DEVELOPMENT STATUS

- Status to be reported once the design-build construction contract has commenced.

THIRD PARTY AGREEMENT STATUS

Third Party	Type of Agreement	Forecast Execution Date	Required Need Date	Status/ Comments
City of Los Angeles	Amendment	12/02	N/A	Executed December 2002. Contract Work Order was first issued in August 2008. Special Permitting Process (SPP) was drafted by City in April 2009 and is projected to be executed by July 2009.
Los Angeles County	Master	Completed	N/A	Executed April 2003.
LADWP (Water/Power)	Amendment	10/09	10/09	Work Orders for critical work issued under current MCA. Authorization received from MTA Board in June 2009 for new Work Order Agreements.
The Gas Company	Amendment	Completed	N/A	Executed May 2005.
AT&T Long Distance	Amendment	Completed	N/A	Executed May 2005. (Formerly PacBell)
TCG Los Angeles, Inc.	Agreement	Completed	N/A	Executed May 2005.
AT&T California	Amendment	Completed	N/A	Executed May 2005. Contract Work Order was first issued in February 2009.
Qwest	Agreement	Completed	N/A	Contract Work Order was first issued in February 2009. MTA Board authorization of new Work Order Agreement is planned in July 2009.
L.A. County Department of Public Works/L.A. County Flood Control District	Agreement	Completed	N/A	Agreement executed 1991 between SCRTD and LA County Flood Control District.
MCI Worldcom	Amendment	Completed	N/A	Executed May 2005. Contract Work Order was first issued in February 2009.
Verizon Wireless (Verizon Business (MCI))	Amendment	Completed	N/A	Executed May 2005. (MCI)
SCRRA (Metrolink)	Agreement	8/09	8/09	Work Order authorized in January 2009 to accelerate Project. Authorization received from MTA Board in May 2009 for new Work Order Agreements.
UPRR	Agreement	Completed	N/A	Executed June 1989. Work Order Authorized in February 2009.
Level 3 Communications	Agreement	Completed	N/A	Executed May 2005.
Time Warner Cable	Agreement	8/09	8/09	MTA Board authorization of new Work Order Agreements is planned in September 2009.

THIRD PARTY AGREEMENT STATUS (Contd)

MWD	Agreement	Completed	N/A	Cooperative Agreement for Long Beach-LA Rail System December 1986. A May 2003 letter from MTA concurs that no additional MWD amendment is required. Both agencies will review submittals upon request without charge, unless protection, relocation and/or adjustments are required.
-----	-----------	-----------	-----	--

CONTRACT C0941 STATUS

<p>North Parking Lot Chatsworth Station Contractor: Sully-Miller Contracting Co.</p>	<p>Contract No.: C0941</p> <p>Status as of: June 30, 2009</p>					
<p>Progress/Work Completed:</p> <ul style="list-style-type: none"> • Obtained Metrolink Right of Entry Permit. • Submitted Paving/Concrete mix design submittals. • Submitted Schedule of Values and Baseline Schedule. • Completed mobilization. • Completed site clearing. • Completed site survey. <p>Areas of Concern:</p>	<p>Major Activities (In Progress):</p> <ul style="list-style-type: none"> • Submittal Reviews are ongoing. Major submittals include: <ol style="list-style-type: none"> 1. Electrical lighting submittals. 2. Chain-Link fencing submittals. 3. Site utility submittals. 4. Landscape and irrigation submittals. • Commenced rough grading. • Soil samples taken. <p>Major Activities Next Period:</p> <ul style="list-style-type: none"> • Complete construction submittals • Complete rough grading • Install chain-link fencing • Begin storm drain Installation • Install lighting conduit. • Begin light pole procurement 					
		Original Contract Dates	Time Extension	Current Contract	Forecast	Variance CDs
	Milestone 1 - Contract Completion	10/16/09	0	10/16/09	10/16/09	0
<p>Schedule Summary:</p> <p>Date of Award: 06/02/09</p> <p>Notice to Proceed: 06/18/09</p> <p>Original Contract Duration: 120</p> <p>Current Contract Duration: 120</p> <p>Elapsed Time from NTP: 12</p>	<p>Cost Summary: \$ In 000's</p> <p>1. Award Value: 1,286.80</p> <p>2. Executed Modifications: 0.00</p> <p>3. Approved Change Orders: 0.00</p> <p>4. Current Contract Value (1 + 2 + 3): 1,286.80</p> <p>5. Pending Changes: 0.00</p> <p>6. Incurred Cost: 0.00</p>					

CHRONOLOGY OF EVENTS

1990	MTA purchased abandoned railroad right-of-way.
April 1, 2003	Regionally Significant Transportation Investment Study (RSTIS) completed and approved by MTA Board.
September 28, 2006	MTA Board authorized the Chief Executive Officer to begin environmental clearance and Preliminary Engineering for a northern extension of the Metro Orange Line along the MTA-owned Canoga Avenue rail right-of-way to the Chatsworth Metrolink Station.
November 7, 2006	MTA issues RFP No. PS43701952 for Northern/Canoga Extension of the Metro Orange Line to solicit Contractor to environmentally clear and complete the Preliminary Engineering with Options for Design Development (Phase 3) and Engineering Support Services During Construction (Phase 4).
March 22, 2007	MTA Board approves Item No. 35 for staff to negotiate and execute a professional services contract with Iteris Inc. to environmentally clear and complete the preliminary engineering phase.
April 25, 2007	Limited Notice to Proceed issued to Iteris Inc authorizing Phase A - DEIR, Phase B – FEIR, Phase 1 Conceptual Engineering and Phase 2 Preliminary Engineering (18 month duration).
June 26, 2008	MTA Board selects Locally Preferred Alternative and receives Draft Environmental Impact Report.
July 17, 2008	Limited Notice to Proceed Issued to Iteris for PE bridge element only Scope of Work.
August 12, 2008	Commence Preliminary Engineering. Full Notice to Proceed Issued to Iteris.
September 10 and 15, 2008	Field meetings with City of Los Angeles staff to review field conditions and items to be included in preliminary Engineering (PE).
October 7, 2008	Field diagnostic meeting with SCRRA, CPUC and City of Los Angeles on at-grade rail crossing on Lassen Street and the bridge overcrossing.
November 7, 2008	Submitted pre-final PE drawings to third party agencies and utility companies for review and comments.

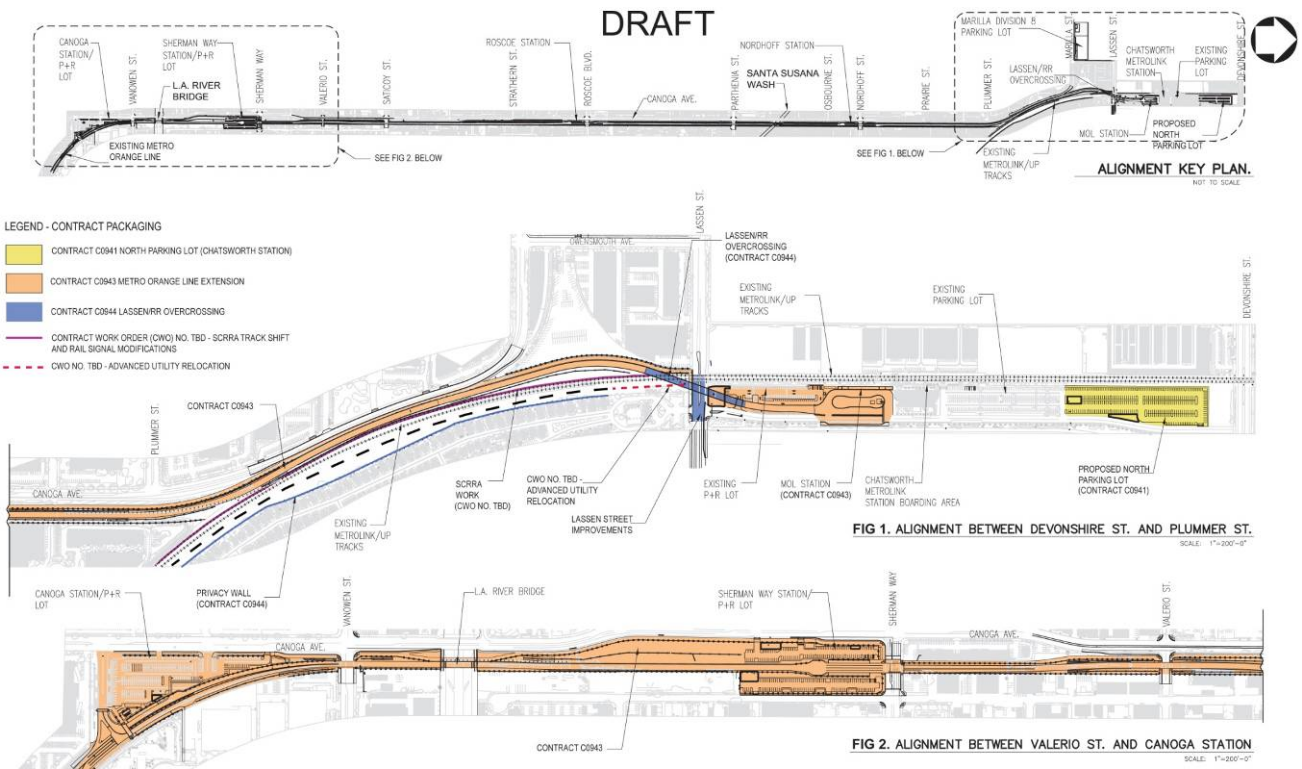
CHRONOLOGY OF EVENTS

January 22, 2009	MTA Board Certifies Final EIR, Adopts Project, approves Design-Build contracting approach, and approves engineering services by Iteris, Inc.
January 23, 2009	Issue Limited Notice to Proceed to Iteris Inc. Authorizing Design Development (Phase 3), Selected Final Design and Engineering Support Services During Construction (Phase 4).
February 19, 2009	Submitted draft Design-Build Contract C0943 documents to third party agencies and utility companies for review and comments.
March 3, 2009	Submitted 65% design drawings for Lassen Street improvements to third party agencies and utility companies for review and comments.
March 5, 2009	Executed Contract Modifications to Iteris, Inc. for engineering services including final design of selected elements.
March 13, 2009	Advertised Contract C0941 North Parking Lot (Chatsworth Station).
March 25, 2009	Submitted application to CPUC for MOL Extension grade separated two lane crossing above and across the railroad tracks near Lassen Street in Chatsworth.
April 6, 2009	First commencement of work at North Parking Lot (Chatsworth Station) was advance utility protection by third party utility company Qwest.
April 10, 2009	Executed Contract Work Order 1.00 to Stantec consulting, Inc for Construction Management Support Services for the MOL Extension. MTA Board awarded Contract MC069 to Stantec Consulting, Inc on February 25, 2009.
April 13, 2009	Received seven bids for Contract C0941 North Parking Lot (Chatsworth Station).
April 24, 2009	Submitted 85% design drawings for Lassen Street improvements to third party agencies and utility companies for review and comments.
May 5, 2009	Submitted 65% design drawings for Lassen/RR Overcrossing bridge structure to SCRRA, UP, City of Los Angeles and other affected third party agencies and utility companies for review and comments. Also, initiated independent design check of the bridge structure.

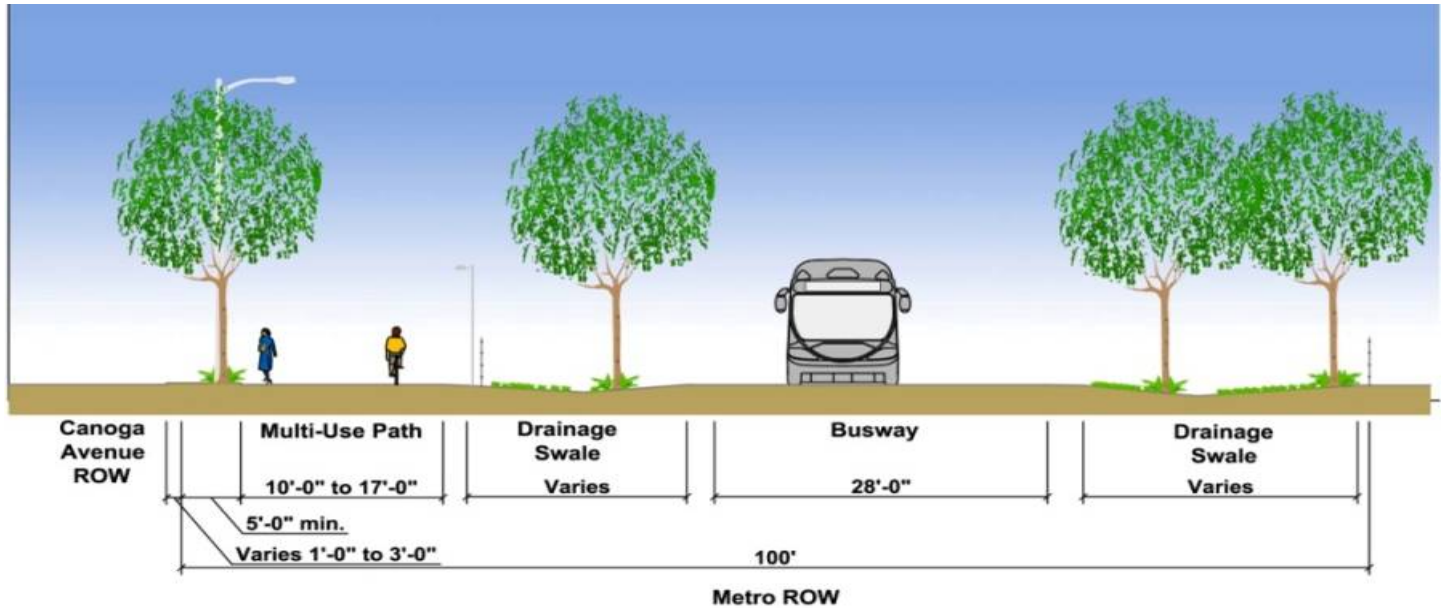
CHRONOLOGY OF EVENTS

May 7, 2009	Received for second time, bids for Contract C0941 North Parking Lot due to non-responsive bids received on April 13, 2009.
June 2, 2009 and June 18, 2009	Awarded Contract C0941 North Parking Lot (Chatsworth Station) and issued notice-to-proceed to Sully-Miller Contracting Company.
June 12, 2009	Advertised Contract C0943 Design-Build.
June 24, 2009	Held MOL Extension Project ground breaking ceremony at North Parking Lot site near Chatsworth Metrolink Station.

ALIGNMENT ILLUSTRATIONS

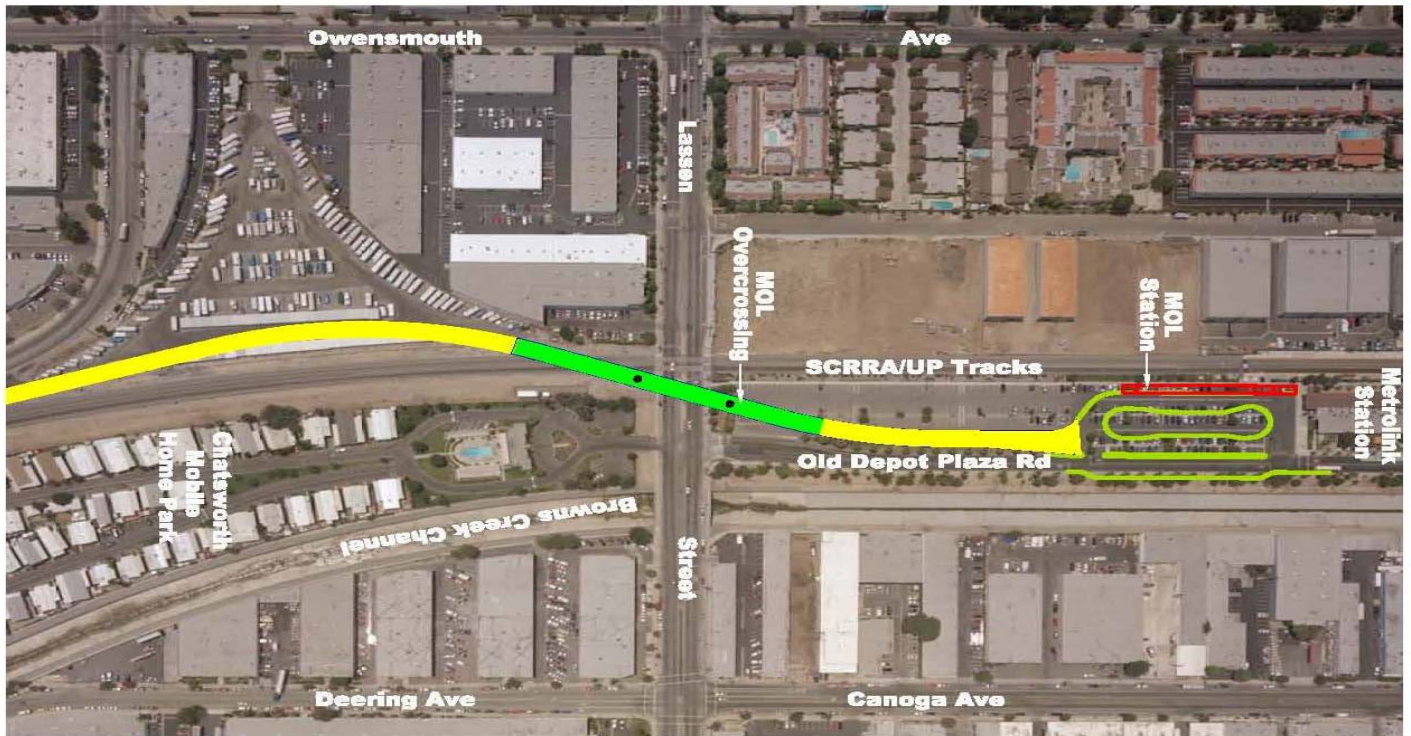


ALIGNMENT ILLUSTRATIONS (Cont'd)



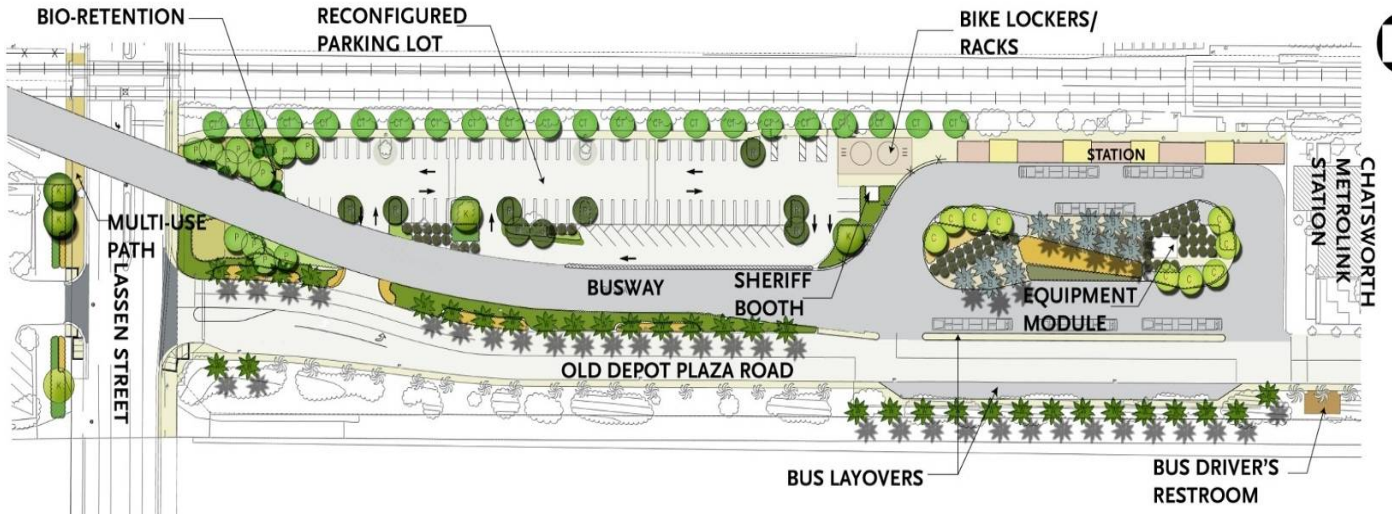
Duplicating features of operating Metro Orange Line.

ALIGNMENT ILLUSTRATIONS (Cont'd)



Lassen Railroad overcrossing location.

ALIGNMENT ILLUSTRATIONS (Cont'd)



Chatsworth Station



CONSTRUCTION PHOTOGRAPHS



Groundbreaking ceremonies at Contract C0941 North Parking Lot.



Site grading at Contract C0941 North Parking Lot (Chatsworth Station).

APPENDIX COST AND BUDGET TERMINOLOGY

COMMITMENTS: The total of actual contract awards, executed change orders or amendments, approved work orders of Master Cooperative Agreements, offers accepted for purchase of real estate, and other Metro actions which have been spent or result in the obligation of specific expenditures at a future time.

CONSTRUCTION: Costs associated with Guideways, Stations, Support Facilities, Sitework/Special Conditions and Systems.

CONTINGENCY: A fund established at the beginning of a project to provide for anticipated but unknown additional costs that may arise during the course of the project.

CURRENT BUDGET: The Original Budget plus all budget amendments approved by formal Metro action. Also referred to as Approved Budget.

CURRENT FORECAST: Evaluation of costs to go combined with actual expenditures.

EXPENDITURES: The total dollar amount of funds expended by Metro for contractor or consultant invoices, third party invoices, staff salaries, real estate and other expenses that is reported in Metro's Financial Information System (FIS).

ORIGINAL BUDGET: The Original Project Budget as established by Metro Board of Directors at the time it authorizes Construction Project Management Division to commence full design and construction of the project (Project Adoption).

PROFESSIONAL SERVICES: Costs associated with General Engineering, Project Management Assistance, Construction Management Support services, Legal Counsel, Agency (Metro Staff) costs, and other Specialty Consultants.

RIGHT-OF-WAY: Includes purchase cost of parcels, easements, right-of-entry permits, escrow fees, and tenant relocation.

VEHICLES: Costs associated with the purchase of buses for project.

APPENDIX
LIST OF ACRONYMS

CADD	Computer Aided Drafting and Design
CALTRANS	California Department of Transportation
CD	Calendar Day
CDFG	California Department of Fish and Game
CM	Construction Manager
CMAC	Congestion Mitigation Air Quality
CN	Change Notice
CO	Change Order
COE	Corps of Engineers
CPM	Critical Path Method
CPUC	California Public Utilities Commission
CR	Camera Ready
CTC	California Transportation Commission
CUD	Contract Unit Description
D-B	Design-Build
D-B-B	Design-Bid-Build
DD	Design Development
DEIR	Draft Environmental Impact Report
DWP	Department of Water and Power
EIR	Environmental Impact Report
EIS	Environmental Impact Statement
FD	Final Design
FEIR	Final Environmental Impact Report
FIS	Financial Information System
FOCT	Fiber Optics Cable Transmission System
FTE	Full Time Equivalent
GDSR	Geotechnical Design Summary Report
IFB	Invitation for Bid
IPO	Integrated Project Office
JV	Joint Venture
LA	Los Angeles
LABOE	Los Angeles Bureau of Engineering
LACFCD	Los Angeles County Flood Control District
LADOT	Los Angeles Department of Transportation
LADPW	Los Angeles Department of Public Works
LADWP	Los Angeles Department of Water and Power
LFAT	Local Field Acceptance Test
LNTP	Limited Notice To Proceed
LONP	Letter Of No Prejudice
LRTP	Long Range Transportation Plan
METRO	Los Angeles County Metropolitan Transportation Authority
MIS	Major Investment Study

APPENDIX
LIST OF ACRONYMS (Continued)

MOL	Metro Orange Line
MOL EXT	Metro Orange Line Extension
MPSR	Monthly Project Status Report
N/A	Not Applicable
NTE	Not to Exceed
NTP	Notice To Proceed
OCIP	Owner-Controlled Insurance Program
P6	Primavera Project Planner® (scheduling software)
PC	Project Control
PE	Preliminary Engineering
PIP	Project Implementation Plan
PM	Project Manager
PMA	Project Management Assistance
PMP	Project Management Plan
P&P	Policies & Procedures
PR	Project Report
PSR	Project Study Report
QA	Quality Assurance
QAR	Quality Assurance Report
QC	Quality Control
QPSR	Quarterly Project Status Report
RFC	Request For Change
RFP	Request For Proposal
ROD	Revenue Operations Date
ROM	Rough Order of Magnitude
ROW	Right-Of-Way
RR	Railroad
RWQCB	Regional Water Quality Control Board
SCE	Southern California Edison
SCRRA	Southern California Regional Rail Authority (Metrolink)
SFV	San Fernando Valley
SIT	System Integration Testing
SOV	Schedule Of Value
SOW	Statement Of Work
SP	Special Provision
TBD	To Be Determined
UFS	Universal Fare System
VE	Value Engineering
WBS	Work Breakdown Structure
WP	Work Package