

Metro Orange Line Extension

March 2009



TABLE OF CONTENTS

| | Page No. |
|---|----------|
| Project Overview..... | 1-2 |
| Management Issues..... | 2 |
| Project Status | |
| • Project Scope..... | 3 |
| • Schedule | |
| ○ Key Milestones Six-Month Look Ahead | 4 |
| ○ Summary Schedule..... | 5 |
| ○ Schedule Narrative | 6 |
| • Project Cost Status and Analysis..... | 7 |
| • Financial/Grant Status..... | 8 |
| • Real Estate..... | 9 |
| • Environmental..... | 10 |
| • Community Relations..... | 10 |
| • Quality Assurance..... | 11 |
| • Safety..... | 11 |
| • Art Development..... | 11 |
| • Third Party..... | 12 |
| Chronology of Events..... | 13-14 |
| Alignment Illustrations..... | 15-18 |
| Appendices..... | 19-21 |

PROJECT OVERVIEW

The Metro Orange Line (MOL) Extension Project is a four-mile extension of the Metro Orange Line extending from the Canoga park-and-ride lot to the Chatsworth Metrolink Station. The Project includes: busway, new station platforms at the Canoga park-and-ride lot, new stations at Sherman Way (with park-and-ride), Roscoe Boulevard, Nordhoff Street, and the Chatsworth Metrolink Station (with park-and-ride); grade-separation structure over active railroad tracks and Lassen Street (Lassen/RR Overcrossing) providing direct access into the Chatsworth Metrolink Station; Los Angeles River and Santa Susana Wash bridge crossings; and satellite bus parking facility. The project also includes street improvements, bicycle/pedestrian path, systems equipment and landscaping similar to the MOL.

Iteris, Inc., Metro's engineering consultant, has substantially completed preliminary engineering. Project staff received Metro Board approval in January 2009 to commence selected final design for schedule critical components of the project. Early completion of the final design of the new parking lot north of the Chatsworth Metrolink Station (North Parking Lot - Contract C0941) will allow a portion of the existing parking lot south of the Chatsworth Metrolink Station to be closed and construction of the Lassen/RR Overcrossing to commence sooner than originally planned. Iteris, Inc. completed the final design for inclusion in the Contract C0941 solicitation documents and the Contract was advertised on March 13, 2009.

Early completion of the final design of the Lassen/RR Overcrossing (Contract C0944) will allow construction of the bridge to commence sooner than if this work were included in a major design-build contract. Iteris, Inc. continues developing the final design and submitted the first design review package in March 2009. Final design documents will be included in the design-bid-build solicitation documents for Contract C0944 with advertisement planned this summer.

In addition to the two design-bid-build solicitation packages, Iteris, Inc. continues to develop technical documents for inclusion in the design-build Contract C0943 which includes the majority of the project work, including busway, stations, two bridges, approaches for the Lassen/RR Overcrossing, bikeway, parking lots, landscaping and systems. It is anticipated the solicitation package will be available for advertisement in June 2009.

Metro continues to coordinate closely with SCRRA (Metrolink) and has issued a Work Order to Metrolink for track and signal facility design and relocation services, and design review of the Lassen/RR Overcrossing. Removal of interfering signal equipment, realignment of the existing railroad track, modifications of the rail signals and at-grade rail crossing safety enhancements at Lassen Street are required to be substantially completed prior to Metro's award of the Lassen/RR Overcrossing (Contract C0944).

Metro has initiated discussions with LADWP and the affected utility companies for relocating interfering power, fiber optic and communication lines which are required to be completed prior to starting construction of Contract C0944 Lassen/RR Overcrossing on the north side of Lassen St.

PROJECT OVERVIEW

Metro's Real Estate Department has issued courtesy letters to lease holders with 90 day lease terms, and termination letters to lease holders with 180 days lease terms that their lease will be terminated and the right of way completely cleared of all improvements.

MANAGEMENT ISSUES

Concern No. 1: Agreement with SCRRRA (Metrolink) and completion of advance rail modification work.

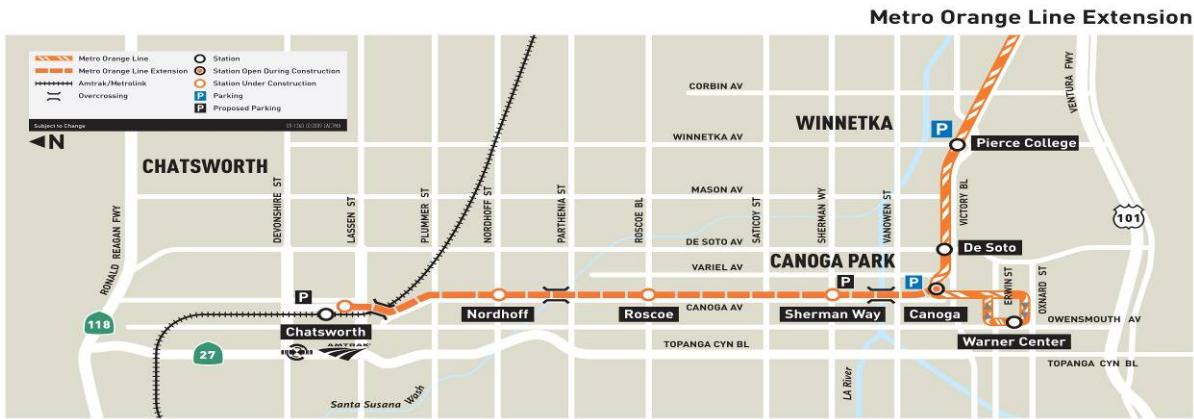
Status/Action Metrolink must substantially complete signal modification and track realignment work prior to Metro's award of Contract C0944 Lassen/RR Overcrossing. Metro has issued a draft Construction and Maintenance Agreement and a Work Order to Metrolink to initiate this work. The concern is the amount of time required to execute the Agreement and long lead time for ordering signal equipment.

Concern No. 2: Agreement with LADWP and Time Warner and completion of advance relocation of power, fiber optic and communication lines at Lassen Street.

Status/Action The relocation of power lines at Lassen Street is required prior to the C0944 Lassen/RR Overcrossing contractor commencing construction of the bridge. The concern is the amount of time required to design and then relocate power lines prior to the start of bridge construction.

PROJECT SCOPE

C0943: Metro Orange Line Extension (MOL Ext) is a design-build contract to construct the majority of the Project scope of work. This contract will include design and construction of busway, new stations at Sherman Way (with park-and-ride), Roscoe Boulevard, Nordhoff Street, and Chatsworth Metrolink Station (with park-and-ride). The existing MOL Canoga park-and-ride lot will be modified with new station platforms. In addition, the contractor will design and construct approaches to the Lassen/RR Overcrossing, a bridge over the Los Angeles River, a smaller bridge over the Santa Susana Wash, street improvements, bicycle/pedestrian path, satellite bus parking facility, landscaping, systems equipment, and system integration and testing.



C0941: North Parking Lot (Chatsworth Station) is a construction contract for a new parking lot to be constructed north of the existing Chatsworth Metrolink Station. Completion of this lot is required before the south parking lot is modified to ensure that parking is continuously available for Metrolink patrons during construction of the MOL Extension.

C0944: Lassen/RR Overcrossing is a construction contract for a grade separation that carries the busway over active railroad tracks and Lassen Street, and descends into the north terminus of the alignment at the Chatsworth Metrolink Station site. Scope of work includes construction of a 500' long 3-span bridge (excluding approaches), improvements along Lassen Street with a new traffic signal at Old Depot Plaza Road, and improvements to the Lassen Street at-grade crossing of the railroad tracks.

Contract Work Order – Advance SCRR (Metrolink) Rail Signal Modification & Track Realignment is to be substantially completed by Metrolink in advance of Metro’s award of construction Contract C0944 Lassen/RR Overcrossing.

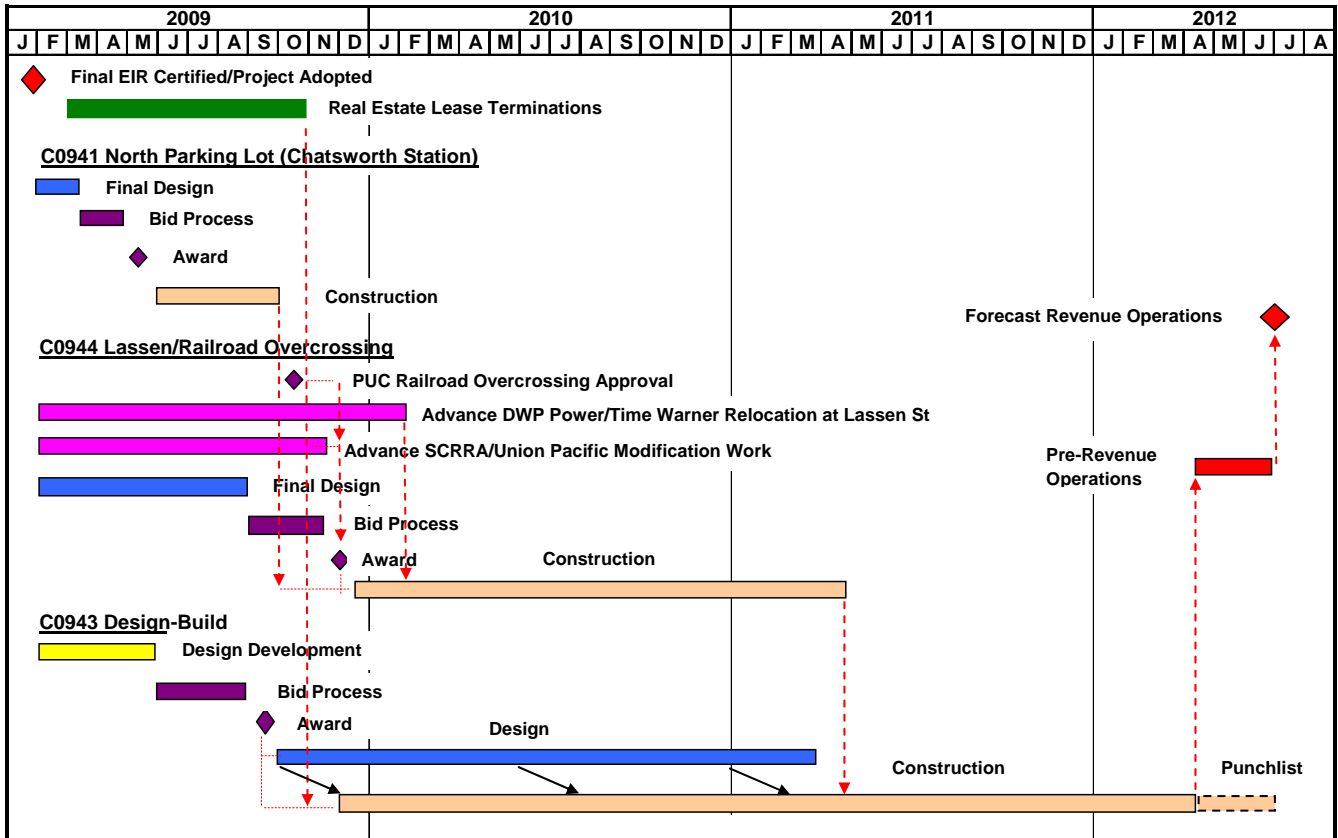
Contract Work Order - Advance Relocation of power, fiber optic and communication lines on Lassen Street is to be completed by LADWP and the affected utility companies prior to Contract C0944 Lassen/RR Overcrossing contractor commencing construction over Lassen St.

KEY MILESTONE SCHEDULE SIX-MONTH LOOK AHEAD

| | Milestone Date | Mar-09 | Apr-09 | May-09 | Jun-09 | Jul-09 | Aug-09 |
|--|----------------|--------|--------|--------|--------|--------|--------|
| C0941: Advertise | 3/13/09A | ◆ | | | | | |
| (Forecast) C0941: Award | 5/14/09 | | | ◆ | | | |
| (Forecast) C0941: Issue NTP Construction | 5/29/09 | | | ◆ | | | |
| (Forecast) C0943: Advertise | 6/1/09 | | | | ◆ | | |

| | | | | | |
|---|----------------|---|------------------------------|---|--------------------|
| ◆ | Metro Staff | ○ | Metro Engineering Consultant | | Metro Board Action |
| △ | Other Agencies | □ | Contractor | * | New Date |

SUMMARY SCHEDULE



SCHEDULE NARRATIVE

With the Metro Board adoption of the MOL Extension Project in January 2009, the Board directed staff to accelerate the completion of the project. To accomplish this directive, staff has taken action to complete design for the critical component of the project, which includes the grade separated bridge over active railroad tracks and Lassen Street. This is in lieu of the design-build contractor starting final design eight months later and having to work out significant issues with SCRRA (Metrolink), Union Pacific (UP), California Public Utilities Commission (CPUC), City of Los Angeles and utility companies, such as third party coordination, the safety work rules, design approvals, relocation of interfering utilities and permits.

Instead of only one design-build contract as originally planned, the scope of work has been broken out into two design-bid-build contracts, one design-build contract and advance railroad/utility relocation work orders to accelerate the project. The three construction contracts are described in the Project Scope section of this Report and are listed below:

Contract C0941 North Parking Lot (Chatsworth Station) – design-bid-build;
Contract C0943 Metro Orange Line – design-build; and
Contract C0944 Lassen/RR Overcrossing – design-bid-build.

Completing the North Parking Lot (Chatsworth Station) will allow the south parking lot to be used as the staging area for the Overcrossing contractor to construct the bridge and complete the Lassen Street improvements.

The project critical path starts with completing the negotiations and executing an agreement with SCRRA (Metrolink) to complete early advance work, such as removal of interfering signal equipment, realigning existing railroad track, and at-grade rail crossing safety enhancements at Lassen Street, in advance of the award of the Lassen/RR Overcrossing construction contract. Also critical is the concurrent DWP and Time Warner power and communication relocation work at Lassen Street in advance of the award of the Lassen/RR Overcrossing construction contract.

The critical path continues with the actual construction of the overcrossing bridge structure leading to the turnover of the structure to the design-builder to complete the remaining scope of work. The critical path switches to the design-builder completing the bridge approaches and installing the fiber optic cable transmission system (FOCT) followed by systems equipment to be installed at all the stations. This and local field acceptance testing (LFAT) will mark the end of construction and the beginning of final systems integration. The critical path concludes with systemwide acceptance testing, pre-revenue operations, and the start of revenue operation.

PROJECT COST STATUS

**COST REPORT BY ELEMENT
UNITS IN MILLIONS**

| ELEM- MENT | | ORIGINAL BUDGET | CURRENT BUDGET | | COMMITMENTS | | EXPENDITURES | | CURRENT FORECAST | | FORECAST VARIANCE |
|---------------|-----------------------|--------------------|----------------|--------------|-------------|------------|--------------|----------|------------------|--------------|----------------------|
| | | | PERIOD | TO DATE | PERIOD | TO DATE | PERIOD | TO DATE | PERIOD | TO DATE | |
| C | CONSTRUCTION | 137.3 | - | 137.3 | 0.3 | 0.3 | - | - | - | 137.3 | - |
| R | RIGHT-OF-WAY | 8.0 | - | 8.0 | - | - | - | - | - | 8.0 | - |
| V | VEHICLES / BUSES | 9.9 | - | 9.9 | - | - | - | - | - | 9.9 | - |
| P | PROFESSIONAL SERVICES | 38.7 | - | 38.7 | 1.3 | 2.8 | - | - | - | 38.7 | - |
| PC | PROJECT CONTINGENCY | 21.7 | - | 21.7 | - | - | - | - | - | 21.7 | - |
| PR | PROJECT REVENUE | - | - | - | - | - | - | - | - | - | - |
| TOTAL | | 215.6 | - | 215.6 | 1.6 | 3.1 | - | - | - | 215.6 | - |

NOTE: EXPENDITURES ARE CUMULATIVE THROUGH FEBRUARY 2009.

PROJECT COST ANALYSIS

Original Budget and Current Budget:

The Life of Project Budget for the Metro Orange Line Extension Project was adopted in January 2009 for a value of \$215.6 million.

Current Forecast:

The total project forecast remains the same at \$215.6 million.

Commitments:

The commitments increased \$1.6 million this period. In the Construction element there was an increase of \$0.3 million due to third party scope of work with the City of Los Angeles and private utility agencies. The Professional Services element increased \$1.3 million for contract modification issued to Iteris, Inc. for Engineering Services During Construction; Community Outreach Program; and Metro Board approved FY09 Metro Staff budget. The \$3.1 million in commitments to date represents 2% of the Original Budget.

Expenditures:

Anticipated first expenditures will be reported on in next report.

FINANCIAL/GRANT STATUS

Project 800119 – Metro Orange Line Extension

MARCH 2009

STATUS OF FUNDS BY SOURCE

\$ in millions

| SOURCE | (A) | (B) | (C) | (D) | (D/B) | (E) | (E/B) | (F) | (F/B) |
|------------------------|-------------------------------|--------------------------------------|-----------------------------|-------------------|-----------|--------------------|-----------|--------------------------------------|-----------|
| | ORIGINAL BUDGET (1) | TOTAL FUNDS ANTICIPATED (2) | TOTAL FUNDS AVAILABLE | COMMITMENTS \$ | % | EXPENDITURES \$ | % | BILLED to FUNDING SOURCE \$ | % |
| PROP 1B FUNDS-PTMISEA* | 68.0 | 30.3 | | 3.1 | 10% | | 0% | | 0% |
| PROP 1B FUNDS-SLTPP** | 73.8 | 73.8 | | | 0% | | 0% | | 0% |
| PROP C 25% | 73.8 | 111.5 | | | 0% | | 0% | | 0% |
| TOTAL | 215.6 | 215.6 | 0.0 | 3.1 | 1% | 0.0 | 0% | 0.0 | 0% |

(1) Based on January 2009 Metro Board adoption of Life of Project Budget.

(2) Based on March 2009 Capital Programming Revised Financial Plan.

* PTMISEA: Public Transportation Modernization and Improvement Surface Enhancement Account

** SLTPP: State - Local Transportation Partnership Program

NOTE: Expenditures are cumulative through February 2009.

STATUS OF FUNDS ANTICIPATED

STATE PROP 1B – PTMISEA: Funds anticipated will be lower than originally budgeted due to on-going State Budget deficit. Proposition C 25% Highway Fund will replace the remaining unfunded balance. Metro submitted a State application for \$8.6M in September 2008. The State approved the \$8.6M application in March 2009. However, the State has not yet released the funds.

REAL ESTATE STATUS

- The number of leases along the MOL Extension Project is 86. The total leases include 25 signboard leases and 61 ground leases.
- All of the tenants, except four (4) have received a Courtesy Letter informing them that their lease would be terminated for the MOL Extension Project.
- Termination notices were sent to six (6) tenants who were required to receive 180 day termination notices. Termination Notices were issued to: (1) Green Light, (2) Green Scene, Inc., (3) Northpark Industrial, LP, (4) Chatsworth Storage, (5) Dale Plaine, Inc. and (6) Steve Port & Miranda Properties, LLC.
- The following three (3) tenants who will be permitted to remain on the right of way with amended leases which allow them to co-exist with the busway: (1) Jacobi Building Supply, (2) National Ready Mix, and (3) Portland Cement.
- Letters were sent to 13 pre-acquisition tenants introducing Paragon Partners who will serve as the Relocation consultant. Paragon will commence interviews with these tenants to determine their business needs, relocation preferences, and eligibility for relocation benefits under state law.
- Discussions are underway with the Chatsworth Mobile Home Park owners for the construction of a privacy fence along the UPRR right of way, and dedication of easements for the bikeway, and traffic signal.

REAL ESTATE STATUS – LEASES

| | Total Number | Received Courtesy Letters | Received Termination Notice | Unlawful Detainer Action | Relocation Completed | Available for Demolition | Available for Construction |
|--------|--------------|---------------------------|-----------------------------|--------------------------|----------------------|--------------------------|----------------------------|
| Leases | 86 | 82 | 6 | 0 | 0 | 0 | 0 |

ENVIRONMENTAL STATUS

- Status to be reported once a construction contract has commenced.

COMMUNITY RELATIONS STATUS

- Began development of Metro Orange Line Extension Project website.
- Began community mapping and business profiles.
- Notified elected officials of real estate lease terminations.
- Coordinated agreement for privacy wall between Metro and the Chatsworth Mobile Home Park.
- Held Project briefing for the Design Review Board/Chatsworth Neighborhood Council.
- Established project information hotline for the Metro Orange Line Extension.

QUALITY ASSURANCE STATUS

- Status to be reported once a construction contract has commenced.

QUALITY ACTION REQUEST STATUS

| Project # | QAR # | Description | Due Date | Status | Comments |
|-----------|-------|-------------|----------|--------|----------|
| C0941 | | | | | |
| C0943 | | | | | |
| C0944 | | | | | |
| | | | | | |

SAFETY STATUS

- Status to be reported once a construction contract has commenced.

| Contractor | Project To Date | | | | | | | | | | |
|-----------------|-----------------|-------------|-----------------|----------------|-----------|------------|-------|----------------|-----------------|----------------|-----------|
| | Work-Hours | Cases | | | Days Lost | | | Incident Rates | | | |
| | | Total Cases | Total Lost Time | Retricted Duty | Current | Carry Over | Total | Total Cases | Total Lost Time | Retricted Duty | Days Lost |
| C0941 | 0 | 0.0 | 0.0 | 0.0 | 0.0 | 0.0 | 0.0 | 0.0 | 0.0 | 0.0 | 0.0 |
| C0943 | 0 | 0.0 | 0.0 | 0.0 | 0.0 | 0.0 | 0.0 | 0.0 | 0.0 | 0.0 | 0.0 |
| C0944 | 0 | 0.0 | 0.0 | 0.0 | 0.0 | 0.0 | 0.0 | 0.0 | 0.0 | 0.0 | 0.0 |
| Subtotals | 0 | 0.0 | 0.0 | 0.0 | 0.0 | 0.0 | 0.0 | 0.0 | 0.0 | 0.0 | 0.0 |
| | | | | | | | | | | | |
| Metro Cons. Mgm | 0 | 0.0 | 0.0 | 0.0 | 0.0 | 0.0 | 0.0 | 0.0 | 0.0 | 0.0 | 0.0 |
| | | | | | | | | | | | |
| Totals | 0 | 0.0 | 0.0 | 0.0 | 0.0 | 0.0 | 0.0 | 0.0 | 0.0 | 0.0 | 0.0 |

ART DEVELOPMENT STATUS

- Status to be reported once a construction contract has commenced.

THIRD PARTY AGREEMENT STATUS

| Third Party | Type of Agreement | Forecast Execution Date | Required Need Date | Status/ Comments |
|---|--------------------------|--------------------------------|---------------------------|--|
| City of Los Angeles | Amendment | 6/09 | N/A | Executed December 2002. Special Permitting Process (SPP) to be drafted by City in April 2009 and executed by June 2009. |
| Los Angeles County | Master | Completed | N/A | Executed April 2003. |
| LADWP (Water/Power) | Amendment | 6/09 | N/A | Work is being performed under the current MCA. Alternative language to be sent in April 2009 for proposed amendment. |
| The Gas Company | Amendment | Completed | N/A | Executed May 2005. |
| AT&T Long Distance | Amendment | Completed | N/A | Executed May 2005. (Formerly PacBell) |
| TCG Los Angeles, Inc. | Agreement | Completed | N/A | Executed May 2005. |
| AT&T California | Amendment | Completed | N/A | Executed May 2005. |
| Qwest | Agreement | Completed | N/A | Agreement executed March 2009. |
| L.A. County Department of Public Works/L.A. County Flood Control District | Agreement | Completed | N/A | Agreement executed 1991 between SCRTD and LA County Flood Control District. |
| MCI Worldcom | Amendment | Completed | N/A | Executed May 2005. |
| Verizon Wireless (Verizon Business (MCI)) | Amendment | Completed | N/A | Executed May 2005. (MCI) |
| SCRRA (Metrolink) | Agreement | 5/09 | 5/09 | Proposed Agreement going to Metro Board in May 2009. Work Order authorized in January 2009 to accelerate Project. |
| UPRR | Agreement | Completed | N/A | Executed June 1989. Work Order Authorized in January 2009. |
| Level 3 Communications | Agreement | Completed | N/A | Executed May 2005. |
| Time Warner Cable | Agreement | 6/09 | 6/09 | Staff working on Agreement with Time Warner Cable. Will need to go to Metro Board. |
| MWD | Agreement | Completed | N/A | Cooperative Agreement for Long Beach-LA Rail System December 1986. A May 2003 letter from Metro concurs that no additional MWD amendment is required. Both agencies will review submittals upon request without charge, unless protection, relocation and/or adjustments are required. |

CHRONOLOGY OF EVENTS

| | |
|--------------------|--|
| 1990 | Metro purchased abandoned railroad right-of-way. |
| April 1, 2003 | Regionally Significant Transportation Investment Study (RSTIS) completed and approved by Metro Board. |
| September 28, 2006 | Metro Board authorized the Chief Executive Officer to begin environmental clearance and Preliminary Engineering for a northern extension of the Metro Orange Line along the Metro-owned Canoga Avenue rail right-of-way to the Chatsworth Metrolink Station. |
| November 7, 2006 | Metro issues RFP No. PS43701952 for Northern/Canoga Extension of the Metro Orange Line to solicit Contractor to environmentally clear and complete the Preliminary Engineering. |
| March 22, 2007 | Metro Board approves Item No. 35 for staff to negotiate and execute a professional services contract with Iteris Inc. to environmentally clear and complete the preliminary engineering phase. |
| April 25, 2007 | Limited Notice to Proceed issued to Iteris Inc authorizing Phase A - DEIR, Phase B – FEIR, Phase 1 Conceptual Engineering and Phase 2 Preliminary Engineering (18 month duration). |
| June 26, 2008 | Metro Board selects Locally Preferred Alternative and receives Draft Environmental Impact Report. |
| July 17, 2008 | Limited Notice to Proceed Issued to Iteris for PE bridge element only Scope of Work. |
| August 12, 2008 | Commence Preliminary Engineering. Full Notice to Proceed Issued to Iteris. |
| January 22, 2009 | Metro Board Certifies Final EIR & Adopts Project. |
| January 23, 2009 | Issue Limited Notice to Proceed to Iteris Inc. Authorizing Design Development (Phase 3), Selected Final Design and Design Services During construction (Phase 4). |
| February 25, 2009 | Iteris submitted 100% Design Submittal for Contract C0941 North Parking Lot (Chatsworth Station). |
| February 27, 2009 | Iteris submitted 65% Design Submittal (Excludes Structure) for Contract C0944 Lassen RR/Overcrossing. |

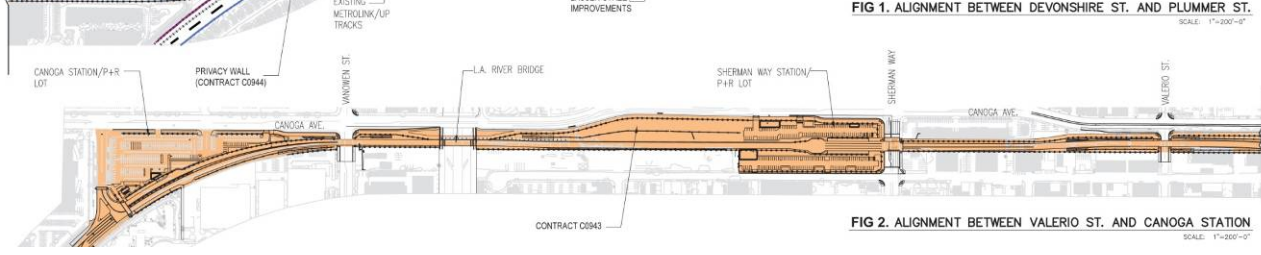
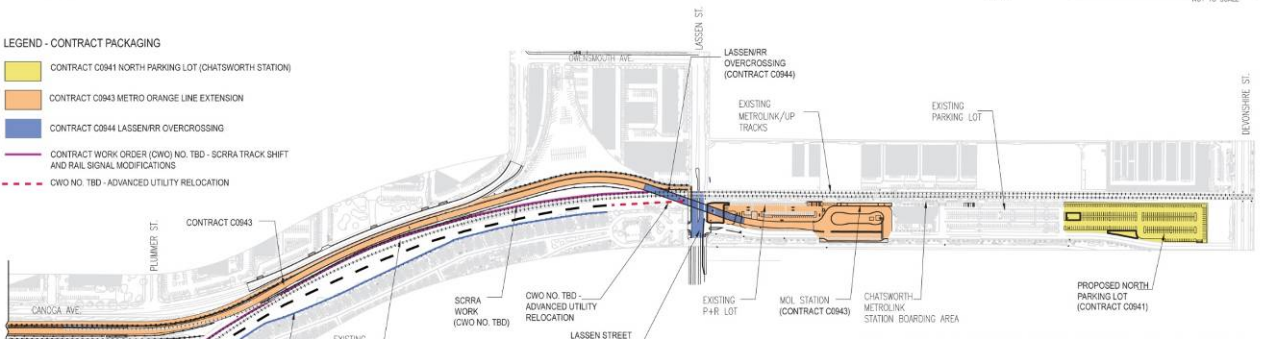
CHRONOLOGY OF EVENTS

- | | |
|----------------|--|
| March 13, 2009 | Metro advertised Contract C0941 North Parking Lot (Chatsworth Station). |
| March 25, 2009 | Submitted application for MOL Extension grade separated two lane crossing above and across the railroad tracks near Lassen Street in Chatsworth. |

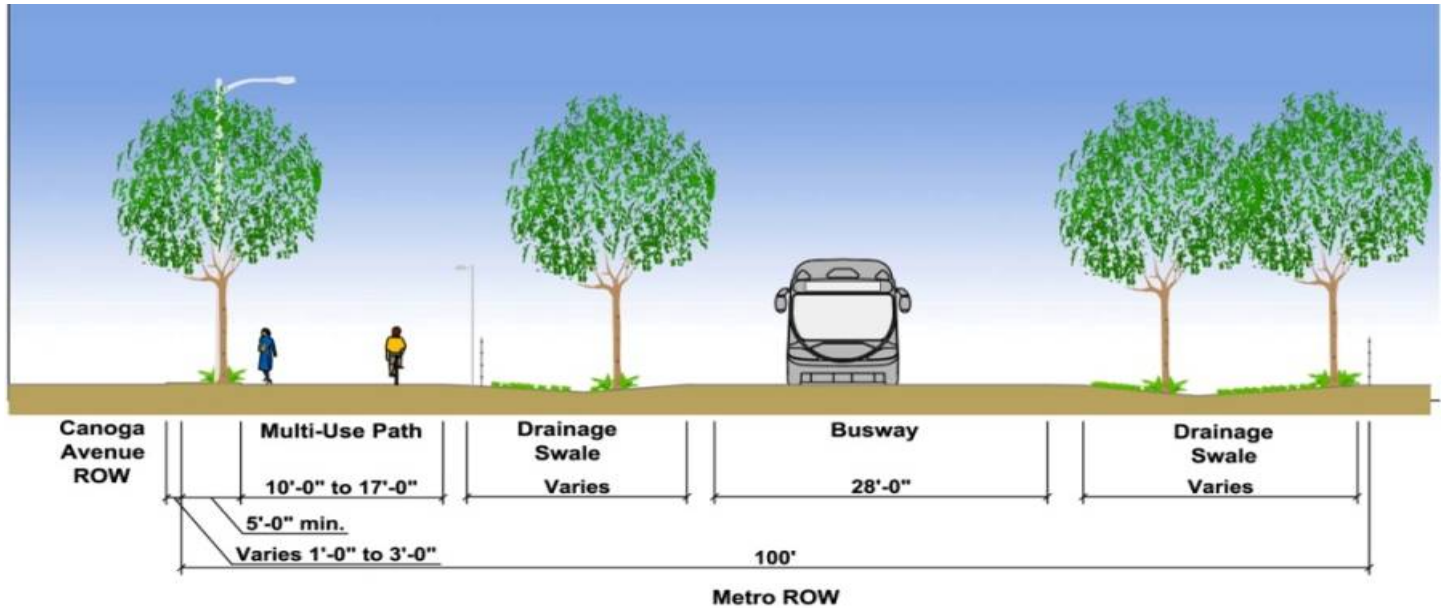
ALIGNMENT ILLUSTRATIONS



- LEGEND - CONTRACT PACKAGING**
- CONTRACT C0941 NORTH PARKING LOT (CHATSWORTH STATION)
 - CONTRACT C0943 METRO ORANGE LINE EXTENSION
 - CONTRACT C0944 LASSEN/RR OVERCROSSING
 - CONTRACT WORK ORDER (CWO) NO. TBD - SCRRRA TRACK SHIFT AND RAIL SIGNAL MODIFICATIONS
 - CWO NO. TBD - ADVANCED UTILITY RELOCATION



ALIGNMENT ILLUSTRATIONS (Cont'd)



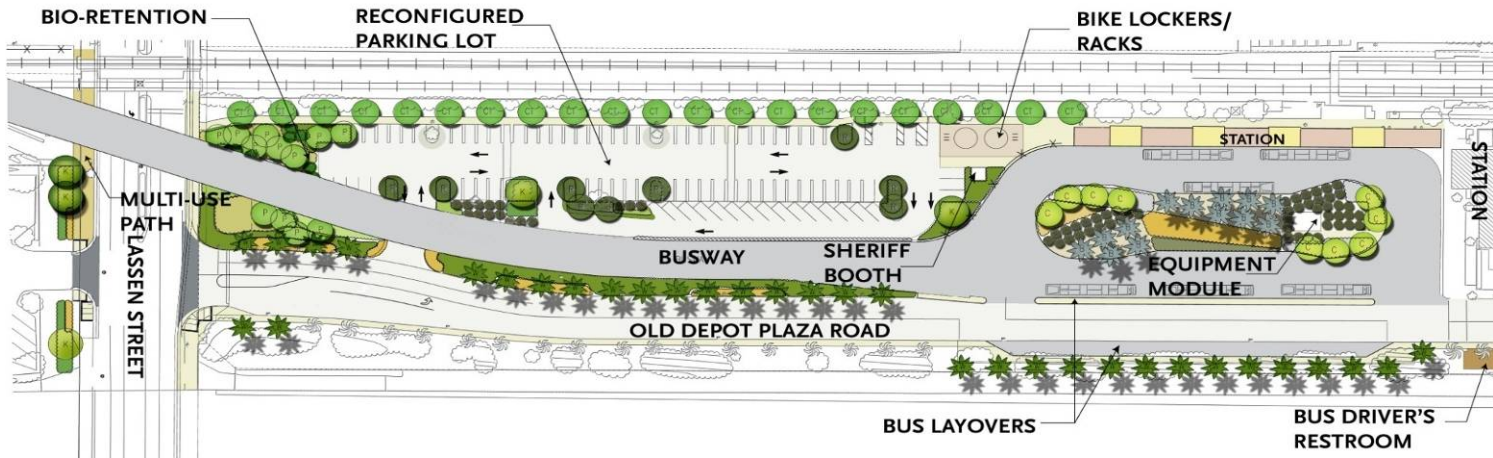
Duplicating features of operating Metro Orange Line.

ALIGNMENT ILLUSTRATIONS (Cont'd)



Lassen Railroad overcrossing location.

ALIGNMENT ILLUSTRATIONS (Cont'd)



Chatsworth Station



APPENDIX COST AND BUDGET TERMINOLOGY

COMMITMENTS: The total of actual contract awards, executed change orders or amendments, approved work orders of Master Cooperative Agreements, offers accepted for purchase of real estate, and other Metro actions which have been spent or result in the obligation of specific expenditures at a future time.

CONSTRUCTION: Costs associated with Guideways, Stations, Support Facilities, Sitework/Special Conditions and Systems.

CONTINGENCY: A fund established at the beginning of a project to provide for anticipated but unknown additional costs that may arise during the course of the project.

CURRENT BUDGET: The Original Budget plus all budget amendments approved by formal Metro action. Also referred to as Approved Budget.

CURRENT FORECAST: Evaluation of costs to go combined with actual expenditures.

EXPENDITURES: The total dollar amount of funds expended by Metro for contractor or consultant invoices, third party invoices, staff salaries, real estate and other expenses that is reported in Metro's Financial Information System (FIS).

ORIGINAL BUDGET: The Original Project Budget as established by Metro Board of Directors at the time it authorizes Construction Project Management Division to commence full design and construction of the project (Project Adoption).

PROFESSIONAL SERVICES: Costs associated with General Engineering, Project Management Assistance, Construction Management Support services, Legal Counsel, Agency (Metro Staff) costs, and other Specialty Consultants.

RIGHT-OF-WAY: Includes purchase cost of parcels, easements, right-of-entry permits, escrow fees, and tenant relocation.

VEHICLES: Costs associated with the purchase of buses for project.

**APPENDIX
LIST OF ACRONYMS**

| | |
|----------|--|
| CADD | Computer Aided Drafting and Design |
| CALTRANS | California Department of Transportation |
| CD | Calendar Day |
| CDFG | California Department of Fish and Game |
| CM | Construction Manager |
| CMAC | Congestion Mitigation Air Quality |
| CN | Change Notice |
| CO | Change Order |
| COE | Corps of Engineers |
| CPM | Critical Path Method |
| CPUC | California Public Utilities Commission |
| CR | Camera Ready |
| CTC | California Transportation Commission |
| CUD | Contract Unit Description |
| D-B | Design-Build |
| D-B-B | Design-Bid-Build |
| DD | Design Development |
| DEIR | Draft Environmental Impact Report |
| DWP | Department of Water and Power |
| EIR | Environmental Impact Report |
| EIS | Environmental Impact Statement |
| FD | Final Design |
| FEIR | Final Environmental Impact Report |
| FIS | Financial Information System |
| FOCT | Fiber Optics Cable Transmission System |
| FTE | Full Time Equivalent |
| GDSR | Geotechnical Design Summary Report |
| IFB | Invitation for Bid |
| IPO | Integrated Project Office |
| JV | Joint Venture |
| LA | Los Angeles |
| LABOE | Los Angeles Bureau of Engineering |
| LACFCD | Los Angeles County Flood Control District |
| LADOT | Los Angeles Department of Transportation |
| LADPW | Los Angeles Department of Public Works |
| LADWP | Los Angeles Department of Water and Power |
| LFAT | Local Field Acceptance Test |
| LNTP | Limited Notice To Proceed |
| LONP | Letter Of No Prejudice |
| LRTP | Long Range Transportation Plan |
| METRO | Los Angeles County Metropolitan Transportation Authority |
| MIS | Major Investment Study |

**APPENDIX
LIST OF ACRONYMS (Continued)**

| | |
|---------|---|
| MOL | Metro Orange Line |
| MOL EXT | Metro Orange Line Extension |
| MPSR | Monthly Project Status Report |
| N/A | Not Applicable |
| NTE | Not to Exceed |
| NTP | Notice To Proceed |
| OCIP | Owner-Controlled Insurance Program |
| P6 | Primavera Project Planner® (scheduling software) |
| PC | Project Control |
| PE | Preliminary Engineering |
| PIP | Project Implementation Plan |
| PM | Project Manager |
| PMA | Project Management Assistance |
| PMP | Project Management Plan |
| P&P | Policies & Procedures |
| PR | Project Report |
| PSR | Project Study Report |
| PUC | Public Utilities Commission |
| QA | Quality Assurance |
| QAR | Quality Assurance Report |
| QC | Quality Control |
| QPSR | Quarterly Project Status Report |
| RFC | Request For Change |
| RFP | Request For Proposal |
| ROD | Revenue Operations Date |
| ROM | Rough Order of Magnitude |
| ROW | Right-Of-Way |
| RR | Railroad |
| RWQCB | Regional Water Quality Control Board |
| SCE | Southern California Edison |
| SCRRA | Southern California Regional Rail Authority (Metrolink) |
| SFV | San Fernando Valley |
| SIT | System Integration Testing |
| SOV | Schedule Of Value |
| SOW | Statement Of Work |
| SP | Special Provision |
| TBD | To Be Determined |
| UFS | Universal Fare System |
| VE | Value Engineering |
| WBS | Work Breakdown Structure |
| WP | Work Package |