

May 2009

# Metro Orange Line Extension



## **TABLE OF CONTENTS**

	Page No.
Project Overview.....	1-2
Management Issues.....	2
Project Status	
• Project Scope.....	3
• Schedule	
○ Key Milestones Six-Month Look Ahead .....	4
○ Summary Schedule.....	5
○ Schedule Narrative .....	6
• Project Cost Status and Analysis.....	7
• Financial/Grant Status.....	8
• Staffing.....	9-10
• Real Estate.....	11
• Environmental.....	12
• Community Relations.....	12
• Quality Assurance.....	13
• Safety.....	13
• Art Development.....	13
• Third Party.....	14-15
Chronology of Events.....	16-18
Alignment Illustrations.....	19-22
Appendices.....	23-25

## **PROJECT OVERVIEW**

*The Metro Orange Line (MOL) Extension Project is a four-mile extension of the Metro Orange Line extending from the Canoga park-and-ride lot to the Chatsworth Metrolink Station. The Project includes: busway, new station platforms at the Canoga park-and-ride lot, new stations at Sherman Way (with park-and-ride), Roscoe Boulevard, Nordhoff Street, and the Chatsworth Metrolink Station (with park-and-ride); grade-separation structure over active railroad tracks and Lassen Street (Lassen/RR Overcrossing) providing direct access into the Chatsworth Metrolink Station; Los Angeles River and Santa Susana Wash bridge crossings; and satellite bus parking facility. The project also includes street improvements, bicycle/pedestrian path, systems equipment and landscaping similar to the MOL.*

With the Metro Board adoption of the MOL Extension Project in January 2009, the Board directed staff to accelerate the completion of the Project. Staff has taken actions to complete design for the critical component of the Project, which includes the grade separated bridge over active railroad tracks and Lassen Street. This is in lieu of the design-build contractor starting final design up to eight months later and having to work out significant issues with SCRRA (Metrolink), Union Pacific Railroad (UP), California Public Utilities Commission (CPUC), City of Los Angeles and utility companies.

Iteris, Inc. continues developing the final design of Contract C0944 Lassen/RR Overcrossing and submitted this month the 65% Bridge Structure design package and the 85% Lassen Street Improvements design package, including the at-grade rail crossing, for review by affected agencies.

Iteris, Inc. also submitted this month the preliminary design drawings and continues developing the technical documents for the design-build Contract C0943 bid package consisting of majority of the Project work, including busway, stations, two bridges, approaches for the Lassen/RR Overcrossing, bikeway, parking lots, landscaping and systems. It is anticipated that the solicitation package will be available for advertisement in mid-June 2009.

Construction of Contract C0941 North Parking Lot (Chatsworth Station) is expected to commence in mid-June 2009 with completion to follow four months later. Metrolink patrons will then use this north parking lot while Metro closes a portion of the Metrolink Station south parking lot for use as a staging area for the Overcrossing contractor to construct the bridge and complete the Lassen Street improvements.

Metro continues to coordinate with SCRRA (Metrolink), CPUC and City of Los Angeles for the improvements and enhancements for the at-grade rail crossing on Lassen Street. Metro has issued a Work Order to Metrolink for track and signal facility design and relocation services, and design review of the Lassen/RR Overcrossing. Removal of the interfering signal equipment, realignment of the existing railroad track, modifications of the rail signals and at-grade rail crossing safety enhancements at Lassen Street are required to be substantially completed prior to Metro's award of the Lassen/RR Overcrossing (Contract C0944).

## **PROJECT OVERVIEW**

Metro has issued Work Orders to, and continues discussions with, Los Angeles Department of Water and Power (LADWP) and the affected utility companies for relocating interfering power, fiber optic and communication lines which are required to be completed prior to starting construction of Contract C0944 Lassen/RR Overcrossing on the north side of Lassen Street. LADWP has started design of the underground relocation of power lines on Lassen Street.

Metro continues with the real estate actions required for the Project including lease terminations, right of entry/easement acquisitions in the Union Pacific property, and agreement with the Chatsworth Mobile Home Park for the privacy fence and easements.

## **MANAGEMENT ISSUES**

**Concern No. 1:** Agreement with SCRRRA (Metrolink) and completion of advance rail modification work.

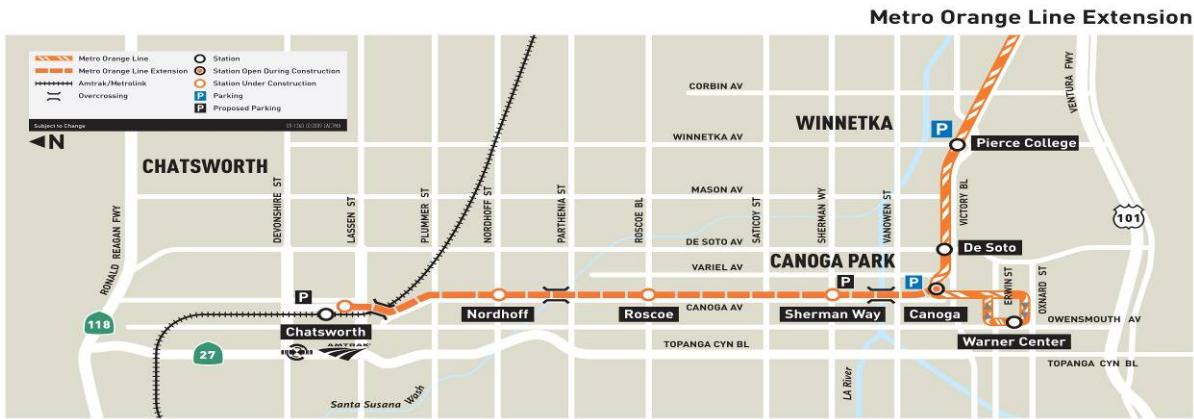
**Status/Action** Metrolink must substantially complete signal modification and track realignment work prior to Metro's award of Contract C0944 Lassen/RR Overcrossing. Metro has issued a Work Order to Metrolink to initiate this work on January 27, 2009 and a draft Construction and Maintenance Agreement on February 20, 2009. SCRRRA has advised that new rail signal control equipment with a long delivery lead time will be required to replace existing equipment which interferes with the proposed bridge column. First concern is that SCRRRA has not yet provided a list of long delivery lead items so that these can be placed on order, and avoid delays in procuring the equipment and completing the rail signal relocation work prior to the start of Lassen/RR Overcrossing. Second concern is that SCRRRA is suggesting additional scope as part of the Project to improve the at-grade rail crossing at Lassen Street. Metro will identify betterments after SCRRRA provides clear scope of work. Third concern is the amount of time required to execute agreement - SCRRRA rejected Metro's draft agreement and provided a different version on April 20, 2009.

**Concern No. 2:** Agreement with LADWP and Time Warner and completion of advance relocation of power, fiber optic and communication lines at Lassen Street.

**Status/Action** The relocation of power lines at Lassen Street is required prior to the C0944 Lassen/RR Overcrossing contractor commencing construction of the bridge. LADWP has provided two options, one for underground and another for overhead relocation. The underground option is preferred, however, the concern is that LADWP has significantly increased the scope of work and costs for the underground relocation and estimated one year to design and complete the relocation work. Metro directed LADWP to proceed with the underground option. To expedite the relocation work, LADWP has agreed to provide the underground conduit/vault design to Metro to include this work in the bid documents for Metro's contractor to complete so that LADWP can relocate the overhead wires and remove interfering poles prior to the start of Lassen/RR Overcrossing construction.

**PROJECT SCOPE**

**C0943: Metro Orange Line Extension (MOL Ext)** is a design-build contract to construct the majority of the Project scope of work. This contract will include design and construction of busway, new stations at Sherman Way (with park-and-ride), Roscoe Boulevard, Nordhoff Street, and Chatsworth Metrolink Station (with park-and-ride). The existing MOL Canoga park-and-ride lot will be modified with new station platforms. In addition, the contractor will design and construct approaches to the Lassen/RR Overcrossing, a bridge over the Los Angeles River, a smaller bridge over the Santa Susana Wash, street improvements, bicycle/pedestrian path, satellite bus parking facility, landscaping, systems equipment, and system integration and testing.



**C0941: North Parking Lot (Chatsworth Station)** is a construction contract for a new parking lot to be constructed north of the existing Chatsworth Metrolink Station. Completion of this lot is required before the south parking lot is modified to ensure that parking is continuously available for Metrolink patrons during construction of the MOL Extension.

**C0944: Lassen/RR Overcrossing** is a construction contract for a grade separation that carries the busway over active railroad tracks and Lassen Street, and descends into the north terminus of the alignment at the Chatsworth Metrolink Station site. Scope of work includes construction of a 500' long 3-span bridge (excluding approaches), improvements along Lassen Street with a new traffic signal at Old Depot Plaza Road, and improvements to the Lassen Street at-grade crossing of the railroad tracks.

**Contract Work Order – Advance SCRRRA (Metrolink) Rail Signal Modification & Track Realignment** is to be substantially completed by Metrolink in advance of Metro’s award of construction Contract C0944 Lassen/RR Overcrossing.

**Contract Work Order - Advance Relocation of power, fiber optic and communication lines on Lassen Street** is to be completed by LADWP and the affected utility companies prior to Contract C0944 Lassen/RR Overcrossing contractor commencing construction over Lassen St.

\* Other contracting strategies will be considered for the inclusion of C0944 work in C0943 Contract. This decision will be dependant on the progress of final design of the C0944 and progress of advance SCRRRA and LADWP work.

**KEY MILESTONE SCHEDULE SIX-MONTH LOOK AHEAD**

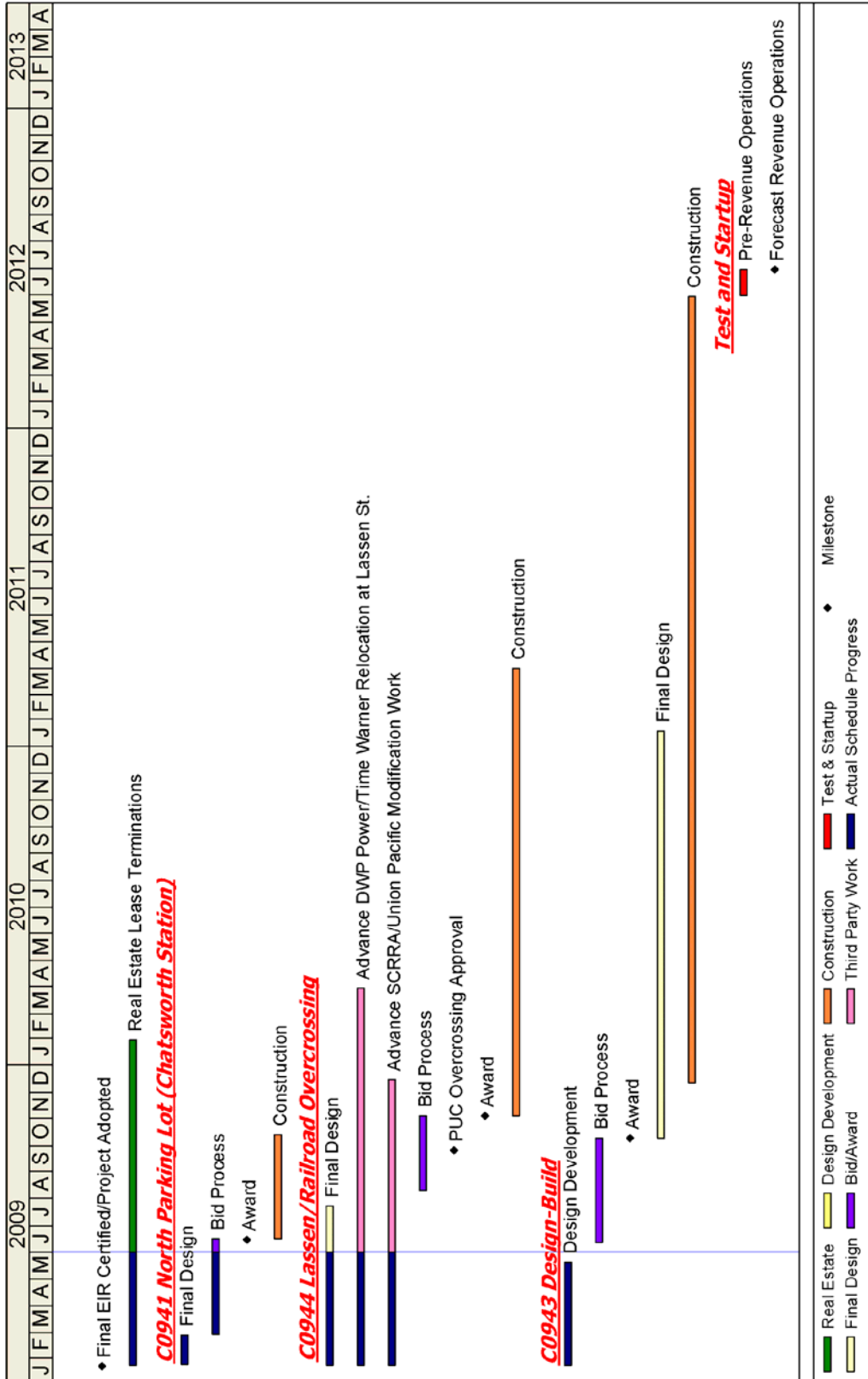
	Milestone Date	May-09	Jun-09	Jul-09	Aug-09	Sep-09	Oct-09
(Forecast) C0941: Bid Opening	5/7/09	◆					
(Forecast) Metrolink Order Long Lead Signal Equipment	6/1/09*		△				
(Forecast) C0941: Award	6/3/09*		◆				
(Forecast) C0943: Advertise	6/12/09*		◆				
(Forecast) C0941: Issue NTP Construction	6/15/09*		◆				
(Forecast) C0941: Ground Breaking	6/24/09		◆				
(Forecast) DWP Underground Power Design on Lassen Street Complete	7/15/09*			△			
(Forecast) C0944: Advertise	8/10/09				◆		
(Forecast) C0943: Bid Opening (Note A)	8/13/09				◆		
(Forecast) C0944: Bid Opening (Note B)	9/11/09					◆	
(Forecast) C0944: CPUC Overcrossing Approval	9/24/09					△	
(Forecast) C0943: Award (Note B)	9/25/09*					◆	
(Forecast) C0941: North Parking Lot Substantial Completion	10/13/09						◆
(Forecast) C0943: NTP (Note B)	10/16/09*						◆

◆	Metro Staff	○	Metro Engineering Consultant		Metro Board Action
△	Other Agencies	□	Contractor	*	New Date

Note A - May be delayed if C0944 Work is included in C0943 and/or delays in advance relocation work.

Note B - May be delayed if advance relocation Work is delayed.

## SUMMARY SCHEDULE



## **SCHEDULE NARRATIVE**

The project critical path starts with completing the negotiations and executing an agreement with SCRRA (Metrolink) to complete early advance work, such as removal of interfering signal equipment, realigning existing railroad track, and at-grade rail crossing safety enhancements at Lassen Street prior to construction of the Lassen/RR Overcrossing. Also critical is the concurrent relocation of the interfering LADWP and Time Warner Cable overhead power and communication lines along Lassen Street prior to construction of the Lassen/RR Overcrossing. All agreements to be completed and construction schedule to be agreed before the award of the Lassen/RR Overcrossing construction contract.

The critical path continues with the actual construction of the overcrossing bridge structure leading to the turnover of the structure to the design-builder to complete the remaining scope of work. The critical path switches to the design-builder completing the bridge approaches and installing the fiber optic cable transmission system (FOCT) followed by systems equipment to be installed at all the stations. This and local field acceptance testing (LFAT) will mark the end of construction and the beginning of final systems integration. The critical path concludes with systemwide acceptance testing, pre-revenue operations, and the start of revenue operation.



**PROJECT COST STATUS - 800119**

**COST REPORT BY ELEMENT  
UNITS IN MILLIONS**

ELEM- MENT	DESCRIPTION	ORIGINAL BUDGET	CURRENT BUDGET		COMMITMENTS		EXPENDITURES		CURRENT FORECAST		FORECAST VARIANCE
			PERIOD	TO DATE	PERIOD	TO DATE	PERIOD	TO DATE	PERIOD	TO DATE	
C	CONSTRUCTION	137.3	-	137.3	1.4	1.7	-	-	-	137.3	-
R	RIGHT-OF-WAY	8.0	-	8.0	-	-	-	-	-	8.0	-
V	VEHICLES / BUSES	9.9	-	9.9	-	-	-	-	-	9.9	-
P	PROFESSIONAL SERVICES	38.7	-	38.7	0.0	7.2	0.2	0.2	-	38.7	-
PC	PROJECT CONTINGENCY	21.7	-	21.7	-	-	-	-	-	21.7	-
PR	PROJECT REVENUE	-	-	-	-	-	-	-	-	-	-
<b>TOTAL</b>		<b>215.6</b>	<b>-</b>	<b>215.6</b>	<b>1.4</b>	<b>8.9</b>	<b>0.2</b>	<b>0.2</b>	<b>-</b>	<b>215.6</b>	<b>-</b>

NOTE: EXPENDITURES ARE CUMULATIVE THROUGH APRIL 2009.

**PROJECT COST ANALYSIS**

**Original Budget and Current Budget:**

The Life of Project Budget for the Metro Orange Line Extension Project was adopted in January 2009 for a value of \$215.6 million.

**Current Forecast:**

The total project forecast remains the same at \$215.6 million.

**Commitments:**

The commitments increased \$1.4 million this period primarily due to execution of Contract C0941 for North Parking Lot (Chatsworth Station) with Sully-Miller Contracting Company, environmental mitigation scope of work with TRC Solutions, and for third party scope of work with the City of Los Angeles and Southern California Regional Water Quality Board. The \$8.9 million in commitments to date represents 4% of the Original Budget.

**Expenditures:**

Expenditures are cumulative through April 2009. The expenditures increased by \$0.17 million this period primarily for costs associated with the Metro Project Administration. The \$0.2 million in expenditures to date represents less than 1% of the current budget. A majority of the engineering services consultant costs for design development and final design are not reflected in expenditures for Project 800119 as these are funded from the balance of previously authorized Planning Phase funds (Project 405513) as mentioned in the January 2009 Board Report for authorization of Iteris' work.

**FINANCIAL/GRANT STATUS**

**Project 800119 – Metro Orange Line Extension**

**MAY 2009**

**STATUS OF FUNDS BY SOURCE**

\$ in millions

SOURCE	(A)	(B)	(C)	(D)	(D/B)	(E)	(E/B)	(F)	(F/B)
	ORIGINAL BUDGET  (1)	TOTAL FUNDS ANTICIPATED (2)	TOTAL FUNDS AVAILABLE	COMMITMENTS \$	%	EXPENDITURES \$	%	BILLED to FUNDING SOURCE \$	%
PROP 1B FUNDS-PTMISEA*	68.0	68.0		8.9	13%	0.2	0%		0%
PROP 1B FUNDS-SLTPP**	73.8	73.8			0%		0%		0%
PROP C 25%	73.8	73.8			0%		0%		0%
<b>TOTAL</b>	<b>215.6</b>	<b>215.6</b>	<b>0.0</b>	<b>8.9</b>	<b>4%</b>	<b>0.0</b>	<b>0%</b>	<b>0.0</b>	<b>0%</b>

(1) Based on January 2009 Metro Board adoption of Life of Project Budget.

(2) Based on March 2009 Capital Programming Revised Financial Plan.

\* PTMISEA: Public Transportation Modernization and Improvement Surface Enhancement Account

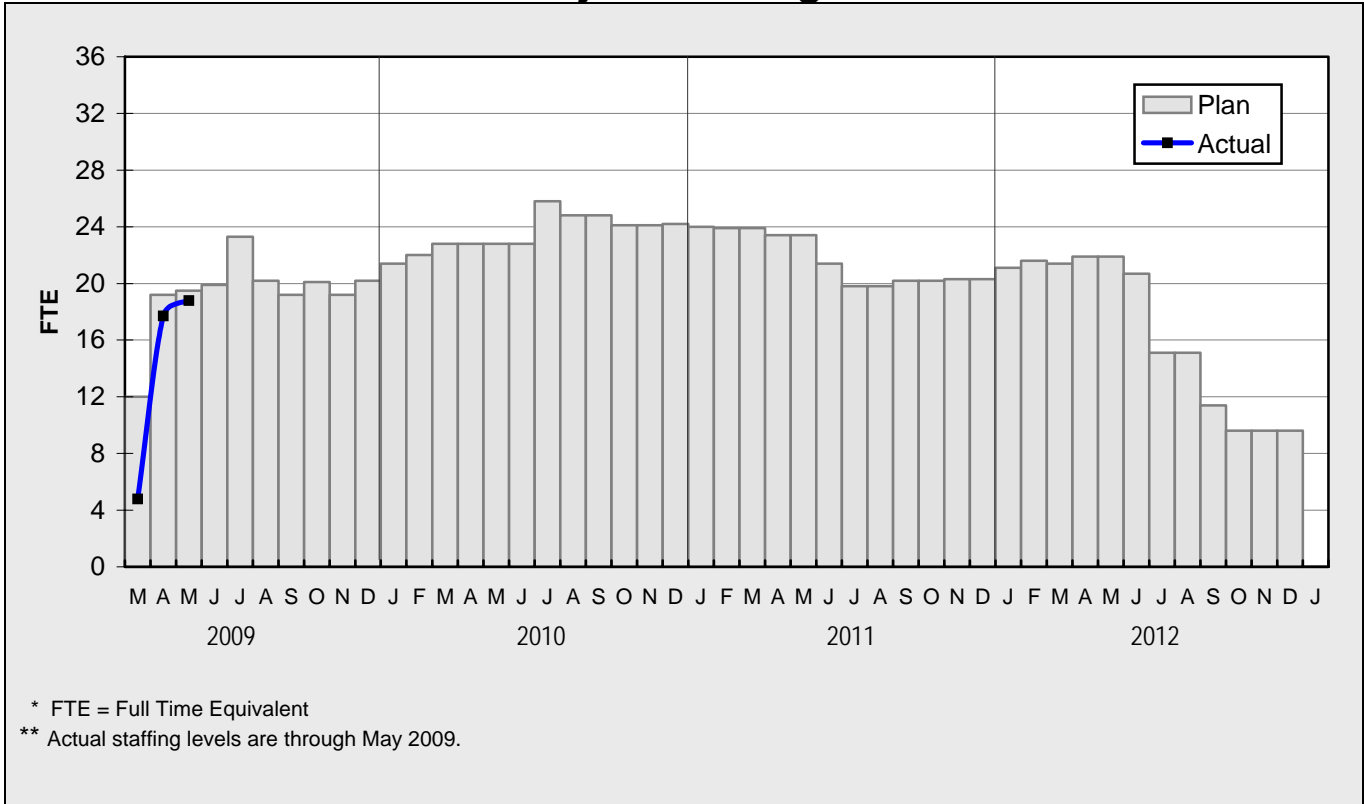
\*\* SLTPP: State - Local Transportation Partnership Program

NOTE: Expenditures are cumulative through April 2009.

**STATUS OF FUNDS ANTICIPATED**

**STATE PROP 1B – PTMISEA:** Metro submitted a state application for \$8.6M in September 2008. The State approved the \$8.6M application in March 2009. However, the funds are frozen until further notice.

**STAFFING STATUS  
Total Project Staffing - FTES**

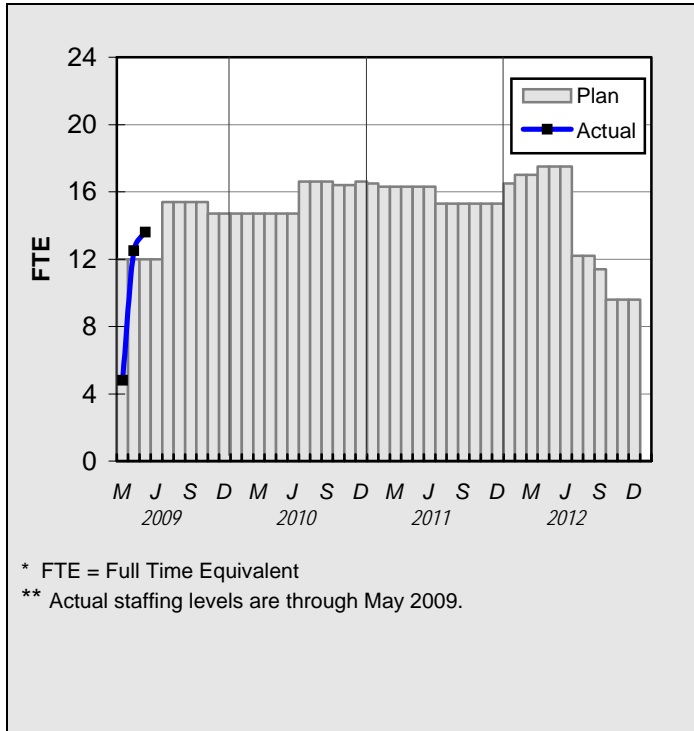


**Total Project Staffing**

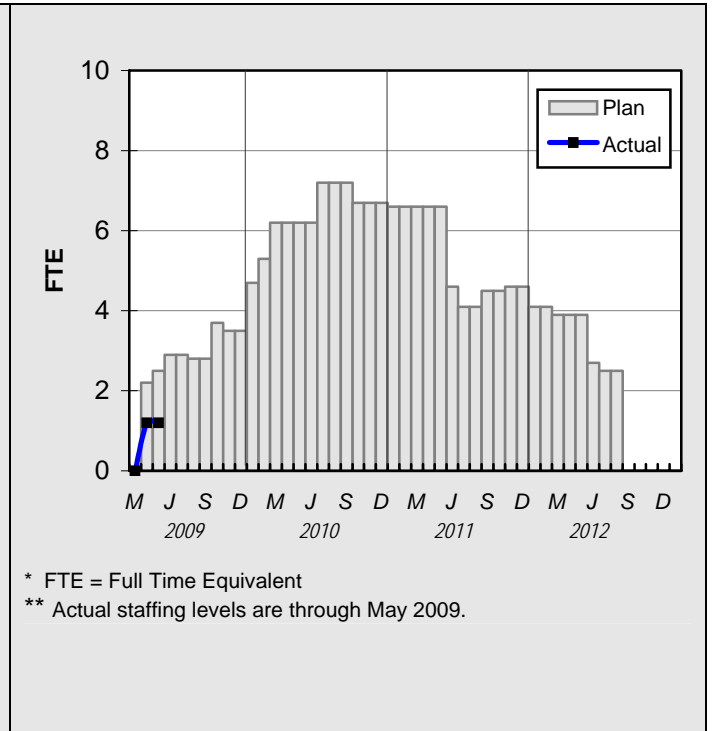
The overall FY09 Total Project Staffing plan averages 17.0 FTE's per month. For May 2009, there was a total of 13.6 FTE's FOR Metro Agency staff and 5.2 FTE's for consulting staff. The total project staffing was 18.8 FTE's for May 2009.

**STAFFING STATUS**

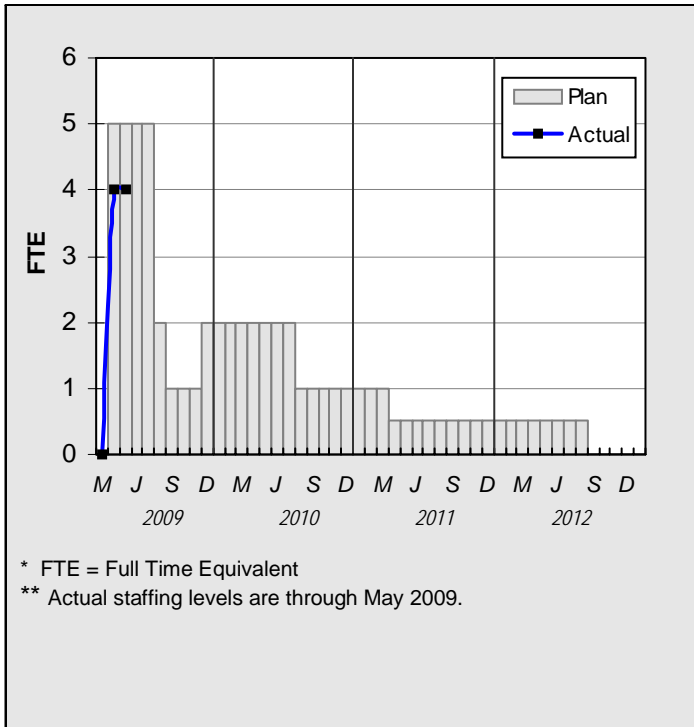
**AGENCY STAFFING**



**CONSTRUCTION MANAGEMENT  
SUPPORT SERVICES CONSULTANT**



**DESIGN CONSULTANT**



**REAL ESTATE STATUS**

- There are a total of 84 leases and 7 Licenses on the MOL Extension Project. The number of leases that will be terminated is 80 and the number of Licenses that will be relocated is 2. Four (4) tenants will be permitted to remain on the right of way; three tenants with amended leases which will permit them to co-exist with the busway and one under existing lease.
- The total leases to be terminated include 24 signboard leases and 56 ground leases. Four leases will be permitted to remain.
- Termination Notices have been issued to 56 Tenants: 50 Notices are effective August 15, 2009 and 6 Notices are effective September 1, 2009.
- Twenty-four outdoor advertising sign (24) leases remain to be terminated. The Outdoor Advertising signs notices will be issued in June 2009.
- Paragon Partners is working with the 13 pre-acquisition tenants to provide relocation assistance to determine their business needs, relocation preferences, and eligibility for relocation benefits under state law.
- Discussions are underway with the Chatsworth Mobile Home Park owners for the construction of a privacy fence along the Union Pacific Railroad (UP) right of way and dedication of easements for the bikeway and traffic signal.
- Discussions are underway with UP for right-of-entry and easements required for construction of facilities within UP property.
- Staff is following up with the tenants who have received termination notices to offer relocation advisory services.

**REAL ESTATE STATUS – LEASES**

	Total Leases	Total Leases to be Terminated	Received Termination Notice	Termination Notices Remaining	Unlawful Detainer Action	Relocation Completed	Available for Demolition	Available for Construction
Leases	84	80	56	24	0	0	0	0

## **ENVIRONMENTAL STATUS**

- Engaged initial discussions with the California Department of Toxic Substances Control regarding disposition of soils along the MOL Extension alignment.
- Commenced asbestos and lead assessments to supplement existing environmental dataset.

## **COMMUNITY RELATIONS STATUS**

- Briefed business owners and Supervisor Mike Antonovich's office on upcoming lease termination.
- Briefed Director Mark Ridley-Thomas' office on the MOL Extension.
- Continued community mapping and business profiles.

**QUALITY ASSURANCE STATUS**

- Developed photographic record and documentation of LADWP utility conflicts, such as existing LADWP power poles in conflict with the MOL extension ROW, as well as other possible encroachments adjacent to future project elements.
- Performed filed verification of project design drawings and constructability assessments.
- Assisted Metro Real Estate to verify locations of proposed fencing to be installed along the Chatsworth Mobil Home Park adjacent to the Metrolink tracks.

**QUALITY ACTION REQUEST STATUS**

Project #	QAR #	Description	Due Date	Status	Comments
C0941					
C0943					
C0944					

**SAFETY STATUS**

- Status to be reported once a construction contract has commenced.

Contractor	Project To Date										
	Work-Hours	Cases			Days Lost			Incident Rates			
		Total Cases	Total Lost Time	Retricted Duty	Current	Carry Over	Total	Total Cases	Total Lost Time	Retricted Duty	Days Lost
C0941	0	0.0	0.0	0.0	0.0	0.0	0.0	0.0	0.0	0.0	0.0
C0943	0	0.0	0.0	0.0	0.0	0.0	0.0	0.0	0.0	0.0	0.0
C0944	0	0.0	0.0	0.0	0.0	0.0	0.0	0.0	0.0	0.0	0.0
Subtotals	0	0.0	0.0	0.0	0.0	0.0	0.0	0.0	0.0	0.0	0.0
Metro Cons. Mgm	0	0.0	0.0	0.0	0.0	0.0	0.0	0.0	0.0	0.0	0.0
Totals	0	0.0	0.0	0.0	0.0	0.0	0.0	0.0	0.0	0.0	0.0

**ART DEVELOPMENT STATUS**

- Status to be reported once a construction contract has commenced.

**THIRD PARTY AGREEMENT STATUS**

<b>Third Party</b>	<b>Type of Agreement</b>	<b>Forecast Execution Date</b>	<b>Required Need Date</b>	<b>Status/ Comments</b>
City of Los Angeles	Amendment	12/02	N/A	Executed December 2002. Contract Work Order was first issued in August 2008. Special Permitting Process (SPP) was drafted by City in April 2009 and is projected to be executed by July 2009.
Los Angeles County	Master	Completed	N/A	Executed April 2003.
LADWP (Water/Power)	Amendment	6/09	6/09	Work Orders for critical work issued under current MCA. Authorization of new Work Order Agreements going to Metro Board in June 2009.
The Gas Company	Amendment	Completed	N/A	Executed May 2005.
AT&T Long Distance	Amendment	Completed	N/A	Executed May 2005. (Formerly PacBell)
TCG Los Angeles, Inc.	Agreement	Completed	N/A	Executed May 2005.
AT&T California	Amendment	Completed	N/A	Executed May 2005. Contract Work Order was first issued in February 2009.
Qwest	Agreement	Completed	N/A	Contract Work Order was first issued in February 2009. Metro Board authorization of new Work Order Agreement is planned in July 2009.
L.A. County Department of Public Works/L.A. County Flood Control District	Agreement	Completed	N/A	Agreement executed 1991 between SCRDT and LA County Flood Control District.
MCI Worldcom	Amendment	Completed	N/A	Executed May 2005. Contract Work Order was first issued in February 2009.
Verizon Wireless (Verizon Business (MCI))	Amendment	Completed	N/A	Executed May 2005. (MCI)
SCRRA (Metrolink)	Agreement	6/09	6/09	Work Order authorized in January 2009 to accelerate Project. Authorization received from Metro Board in May 2009 for new Work Order Agreements.
UPRR	Agreement	Completed	N/A	Executed June 1989. Work Order Authorized in February 2009.
Level 3 Communications	Agreement	Completed	N/A	Executed May 2005.
Time Warner Cable	Agreement	6/09	6/09	Metro Board authorization of new Work Order Agreements is planned in July 2009.



**THIRD PARTY AGREEMENT STATUS ( Contd)**

MWD	Agreement	Completed	N/A	Cooperative Agreement for Long Beach-LA Rail System December 1986. A May 2003 letter from Metro concurs that no additional MWD amendment is required. Both agencies will review submittals upon request without charge, unless protection, relocation and/or adjustments are required.
-----	-----------	-----------	-----	--

## **CHRONOLOGY OF EVENTS**

1990	Metro purchased abandoned railroad right-of-way.
April 1, 2003	Regionally Significant Transportation Investment Study (RSTIS) completed and approved by Metro Board.
September 28, 2006	Metro Board authorized the Chief Executive Officer to begin environmental clearance and Preliminary Engineering for a northern extension of the Metro Orange Line along the Metro-owned Canoga Avenue rail right-of-way to the Chatsworth Metrolink Station.
November 7, 2006	Metro issues RFP No. PS43701952 for Northern/Canoga Extension of the Metro Orange Line to solicit Contractor to environmentally clear and complete the Preliminary Engineering with Options for Design Development (Phase 3) and Engineering Support Services During Construction (Phase 4).
March 22, 2007	Metro Board approves Item No. 35 for staff to negotiate and execute a professional services contract with Iteris Inc. to environmentally clear and complete the preliminary engineering phase.
April 25, 2007	Limited Notice to Proceed issued to Iteris Inc authorizing Phase A - DEIR, Phase B – FEIR, Phase 1 Conceptual Engineering and Phase 2 Preliminary Engineering (18 month duration).
June 26, 2008	Metro Board selects Locally Preferred Alternative and receives Draft Environmental Impact Report.
July 17, 2008	Limited Notice to Proceed Issued to Iteris for PE bridge element only Scope of Work.
August 12, 2008	Commence Preliminary Engineering. Full Notice to Proceed Issued to Iteris.
September 10 and 15, 2008	Field meetings with City of Los Angeles staff to review field conditions and items to be included in preliminary Engineering (PE).
October 7, 2008	Field diagnostic meeting with SCRRA, CPUC and City of Los Angeles on at-grade rail crossing on Lassen Street and the bridge overcrossing.
November 7, 2008	Submitted pre-final PE drawings to third party agencies and utility companies for review and comments.

## **CHRONOLOGY OF EVENTS**

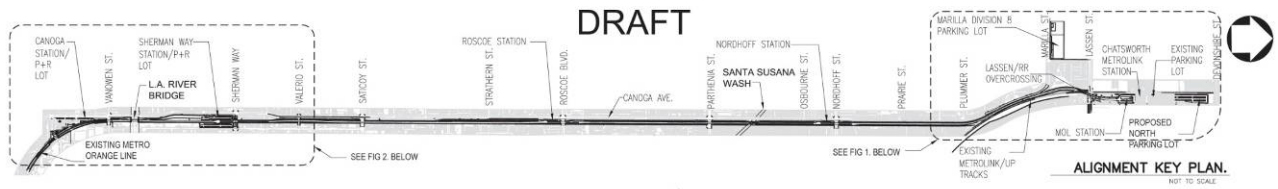
January 22, 2009	Metro Board Certifies Final EIR, Adopts Project, approves Design-Build contracting approach, and approves engineering services by Iteris, Inc.
January 23, 2009	Issue Limited Notice to Proceed to Iteris Inc. Authorizing Design Development (Phase 3), Selected Final Design and Engineering Support Services During Construction (Phase 4).
February 19, 2009	Submitted draft Design-Build Contract C0943 documents to third party agencies and utility companies for review and comments.
March 3, 2009	Submitted 65% design drawings for Lassen Street improvements to third party agencies and utility companies for review and comments.
March 5, 2009	Executed Contract Modifications to Iteris, Inc. for engineering services including final design of selected elements.
March 13, 2009	Metro advertised Contract C0941 North Parking Lot (Chatsworth Station).
March 25, 2009	Submitted application to CPUC for MOL Extension grade separated two lane crossing above and across the railroad tracks near Lassen Street in Chatsworth.
April 6, 2009	First commencement of work at North Parking Lot (Chatsworth Station) was advance utility protection by third party utility company Qwest.
April 10, 2009	Executed Contract Work Order 1.00 to Stantec consulting, Inc for Construction Management Support Services for the MOL Extension. Metro Board awarded Contract MC069 to Stantec Consulting, Inc on February 25, 2009.
April 13, 2009	Metro received seven bids for Contract C0941 North Parking Lot (Chatsworth Station).
April 24, 2009	Submitted 85% design drawings for Lassen Street improvements to third party agencies and utility companies for review and comments.
May 5, 2009	Submitted 65% design drawings for Lassen/RR Overcrossing bridge structure to SCRRRA, UP, City of Los Angeles and other affected third party agencies and utility companies for review and comments. Also, initiated independent design check of the bridge structure.

## **CHRONOLOGY OF EVENTS**

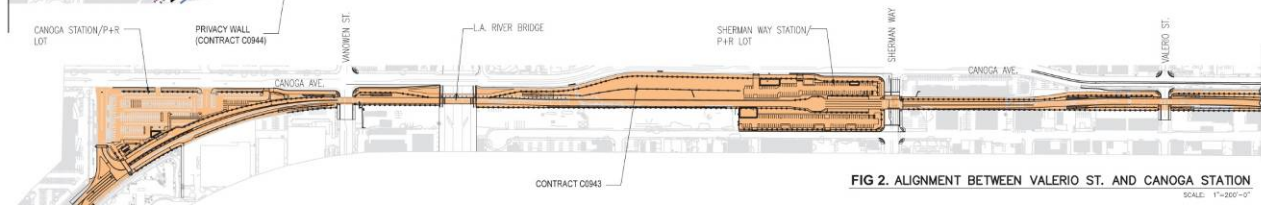
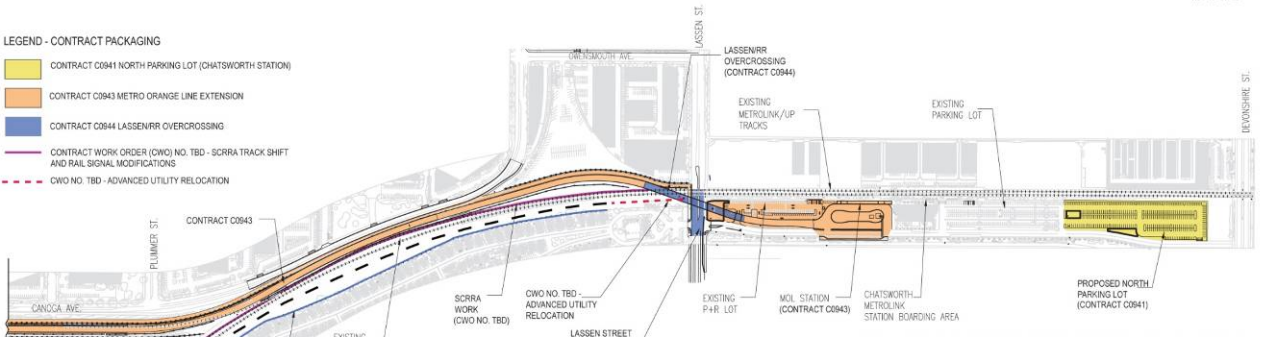
May 7, 2009

Metro received for second time, bids for Contract C0941 North Parking Lot due to non-responsive bids received on April 13, 2009.

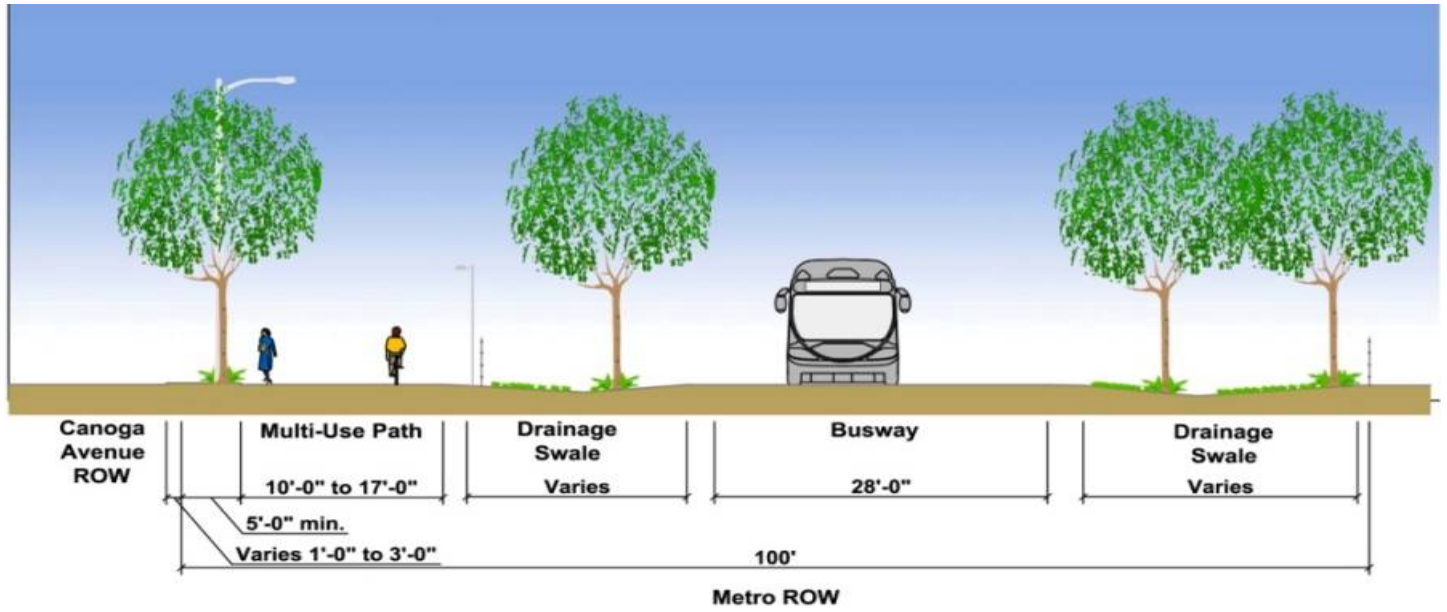
**ALIGNMENT ILLUSTRATIONS**



- LEGEND - CONTRACT PACKAGING**
- CONTRACT C0941 NORTH PARKING LOT (CHATSWORTH STATION)
  - CONTRACT C0943 METRO ORANGE LINE EXTENSION
  - CONTRACT C0944 LASSEN/RR OVERCROSSING
  - CONTRACT WORK ORDER (CWO) NO. TBD - SCRRRA TRACK SHIFT AND RAIL SIGNAL MODIFICATIONS
  - CWO NO. TBD - ADVANCED UTILITY RELOCATION

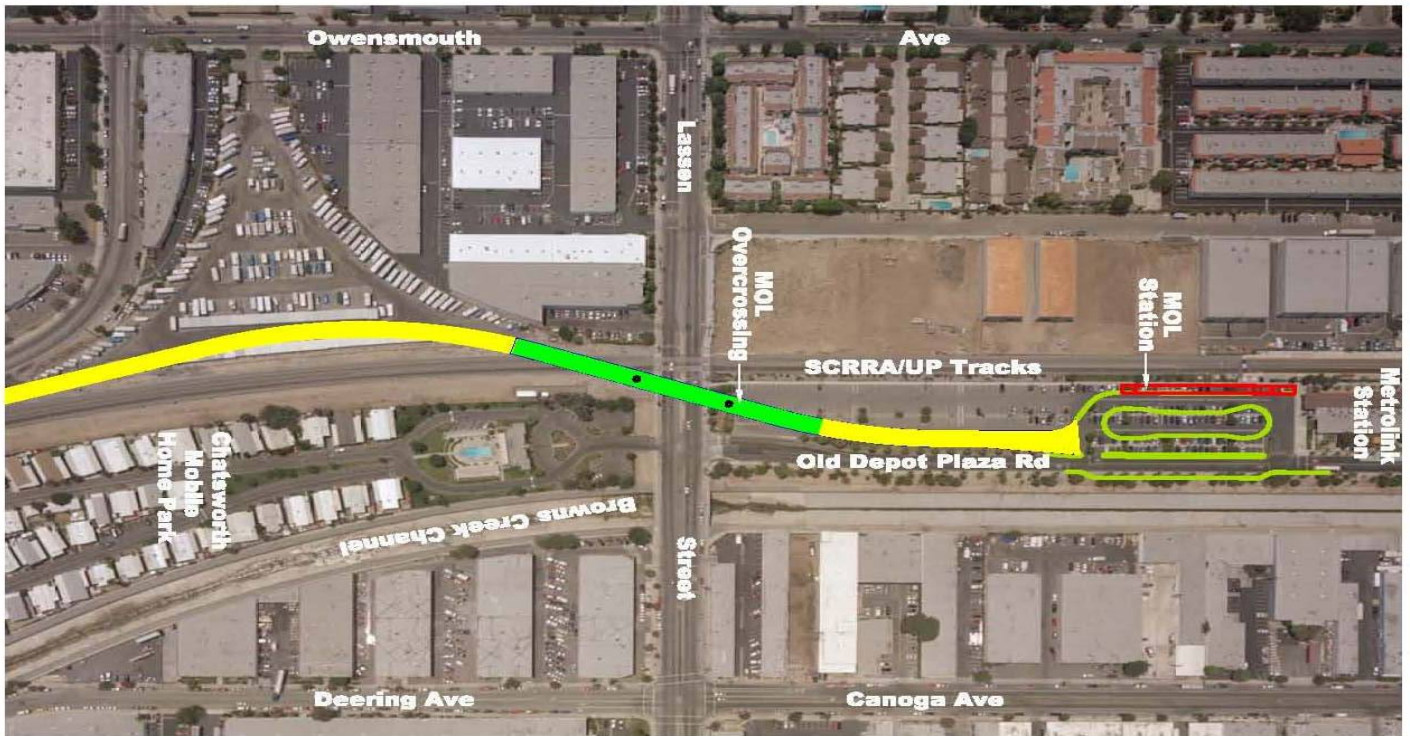


### ALIGNMENT ILLUSTRATIONS (Cont'd)



Duplicating features of operating Metro Orange Line.

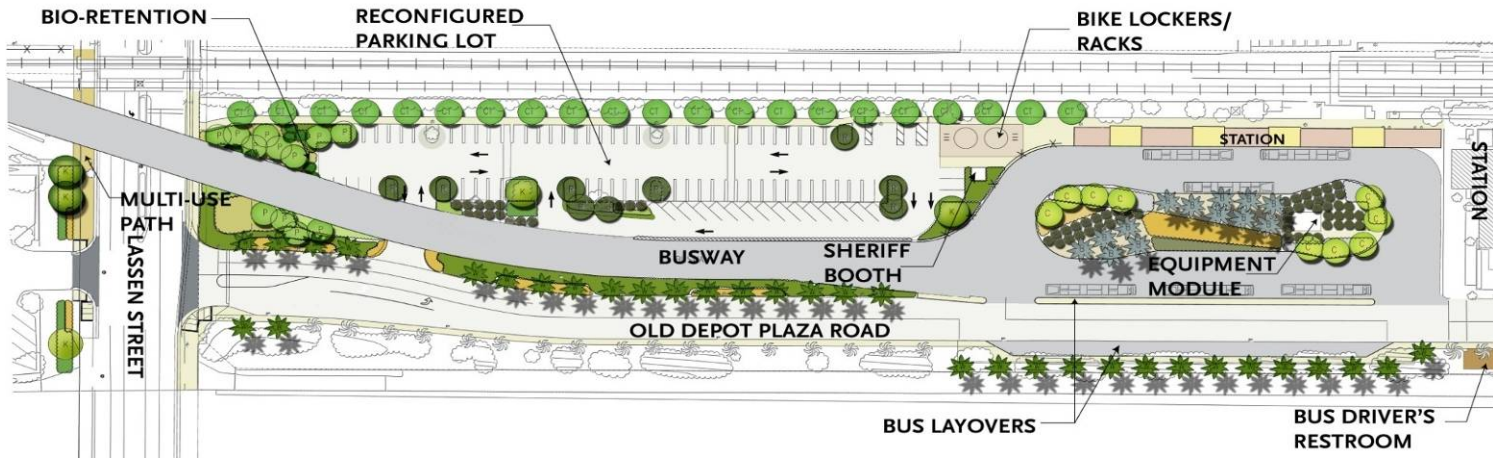
### ALIGNMENT ILLUSTRATIONS (Cont'd)



Lassen Railroad overcrossing location.



### ALIGNMENT ILLUSTRATIONS (Cont'd)



Chatsworth Station





## **APPENDIX COST AND BUDGET TERMINOLOGY**

**COMMITMENTS:** The total of actual contract awards, executed change orders or amendments, approved work orders of Master Cooperative Agreements, offers accepted for purchase of real estate, and other Metro actions which have been spent or result in the obligation of specific expenditures at a future time.

**CONSTRUCTION:** Costs associated with Guideways, Stations, Support Facilities, Sitework/Special Conditions and Systems.

**CONTINGENCY:** A fund established at the beginning of a project to provide for anticipated but unknown additional costs that may arise during the course of the project.

**CURRENT BUDGET:** The Original Budget plus all budget amendments approved by formal Metro action. Also referred to as Approved Budget.

**CURRENT FORECAST:** Evaluation of costs to go combined with actual expenditures.

**EXPENDITURES:** The total dollar amount of funds expended by Metro for contractor or consultant invoices, third party invoices, staff salaries, real estate and other expenses that is reported in Metro's Financial Information System (FIS).

**ORIGINAL BUDGET:** The Original Project Budget as established by Metro Board of Directors at the time it authorizes Construction Project Management Division to commence full design and construction of the project (Project Adoption).

**PROFESSIONAL SERVICES:** Costs associated with General Engineering, Project Management Assistance, Construction Management Support services, Legal Counsel, Agency (Metro Staff) costs, and other Specialty Consultants.

**RIGHT-OF-WAY:** Includes purchase cost of parcels, easements, right-of-entry permits, escrow fees, and tenant relocation.

**VEHICLES:** Costs associated with the purchase of buses for project.

**APPENDIX  
LIST OF ACRONYMS**

CADD	Computer Aided Drafting and Design
CALTRANS	California Department of Transportation
CD	Calendar Day
CDFG	California Department of Fish and Game
CM	Construction Manager
CMAC	Congestion Mitigation Air Quality
CN	Change Notice
CO	Change Order
COE	Corps of Engineers
CPM	Critical Path Method
CPUC	California Public Utilities Commission
CR	Camera Ready
CTC	California Transportation Commission
CUD	Contract Unit Description
D-B	Design-Build
D-B-B	Design-Bid-Build
DD	Design Development
DEIR	Draft Environmental Impact Report
DWP	Department of Water and Power
EIR	Environmental Impact Report
EIS	Environmental Impact Statement
FD	Final Design
FEIR	Final Environmental Impact Report
FIS	Financial Information System
FOCT	Fiber Optics Cable Transmission System
FTE	Full Time Equivalent
GDSR	Geotechnical Design Summary Report
IFB	Invitation for Bid
IPO	Integrated Project Office
JV	Joint Venture
LA	Los Angeles
LABOE	Los Angeles Bureau of Engineering
LACFCD	Los Angeles County Flood Control District
LADOT	Los Angeles Department of Transportation
LADPW	Los Angeles Department of Public Works
LADWP	Los Angeles Department of Water and Power
LFAT	Local Field Acceptance Test
LNTP	Limited Notice To Proceed
LONP	Letter Of No Prejudice
LRTP	Long Range Transportation Plan
METRO	Los Angeles County Metropolitan Transportation Authority
MIS	Major Investment Study

**APPENDIX  
LIST OF ACRONYMS (Continued)**

MOL	Metro Orange Line
MOL EXT	Metro Orange Line Extension
MPSR	Monthly Project Status Report
N/A	Not Applicable
NTE	Not to Exceed
NTP	Notice To Proceed
OCIP	Owner-Controlled Insurance Program
P6	Primavera Project Planner® (scheduling software)
PC	Project Control
PE	Preliminary Engineering
PIP	Project Implementation Plan
PM	Project Manager
PMA	Project Management Assistance
PMP	Project Management Plan
P&P	Policies & Procedures
PR	Project Report
PSR	Project Study Report
QA	Quality Assurance
QAR	Quality Assurance Report
QC	Quality Control
QPSR	Quarterly Project Status Report
RFC	Request For Change
RFP	Request For Proposal
ROD	Revenue Operations Date
ROM	Rough Order of Magnitude
ROW	Right-Of-Way
RR	Railroad
RWQCB	Regional Water Quality Control Board
SCE	Southern California Edison
SCRRA	Southern California Regional Rail Authority (Metrolink)
SFV	San Fernando Valley
SIT	System Integration Testing
SOV	Schedule Of Value
SOW	Statement Of Work
SP	Special Provision
TBD	To Be Determined
UFS	Universal Fare System
VE	Value Engineering
WBS	Work Breakdown Structure
WP	Work Package