

Metro Orange Line Extension

November 2009



Metro

TABLE OF CONTENTS

	Page No.
Project Overview.....	1
Management Issues.....	2
Project Status	
• Project Scope.....	3
• Schedule	
○ Key Milestones Six-Month Look Ahead	4
○ Summary Schedule.....	5
○ Schedule Narrative	6
• Project Cost Status and Analysis.....	7
• Financial/Grant Status.....	8
• Staffing.....	9-11
• Real Estate.....	12
• Environmental.....	13
• Community Relations.....	13
• Quality Assurance.....	14
• Safety.....	15
• Art Development.....	15
• Third Party.....	16-17
• Contract C0941 Status.....	18
• Contract C0943 Status.....	19
Chronology of Events.....	20-23
Alignment Illustrations.....	24-26
Appendices.....	27-29

PROJECT OVERVIEW

The Metro Orange Line (MOL) Extension Project is a four-mile extension of the Metro Orange Line extending from the Canoga park-and-ride lot to the Chatsworth Metrolink Station. The Project includes: busway, new station platforms at the Canoga park-and-ride lot, new stations at Sherman Way (with park-and-ride), Roscoe Boulevard, Nordhoff Street, and the Chatsworth Metrolink Station (with park-and-ride); grade-separation structure over active railroad tracks and Lassen Street (Lassen/RR Overcrossing) providing direct access into the Chatsworth Metrolink Station; Los Angeles River and Santa Susana Wash bridge crossings; and satellite bus parking facility. The project also includes street improvements, bicycle/pedestrian path, systems equipment and landscaping similar to the MOL.

With the MTA Board adoption of the MOL Extension Project in January 2009, the Board directed staff to accelerate the completion of the Project to summer 2012.

MTA continued Contract C0943 Design-Build bid evaluation with award anticipated in January 2010 and notice to proceed planned for February 2010. This contract is the major Design-Build contract that will construct the busway, Lassen/RR Overcrossing and Lassen Street improvements.

MTA awarded the Contract C0954 Chatsworth Mobile Home Park (CMHP) Privacy Fence in November 2009. Construction is anticipated to commence in December 2009 and completed prior to starting major Lassen/RR Overcrossing construction work.

MTA and SCRRA executed a Work Order Agreement on October 29, 2009 for all Metrolink railroad related work required for the MOL Extension and are working on a separate agreement for non-MOL project improvements to be performed concurrently by Metrolink. MTA has previously issued individual Work Orders to SCRRA for design of SCRRA work, design review of the Lassen/RR Overcrossing and other planned improvements adjacent to active tracks, and procurement of long lead signal equipment. Removal of the interfering signal equipment and realignment of the existing railroad track are required to be completed prior to construction of portions of the bridge.

MTA has issued Work Orders and continues discussions with LADWP and Time Warner for relocating interfering power, fiber optic and communication lines underground prior to construction of portions of the bridge.

MTA continues with the real estate actions required for the Project including lease terminations, lease modifications, right of entry/easement acquisitions in the Union Pacific property, and agreement with the Chatsworth Mobile Home Park for easements.

Other departments within MTA will be procuring Universal Fare System equipment as well as evaluating the articulated vehicle requirements and options.

To date, commitments are \$23.2 million or 10.8% of the Original Budget. Expenditures are \$5.8 million or 2.7% of the \$215.6 million Original Budget.

MANAGEMENT ISSUES

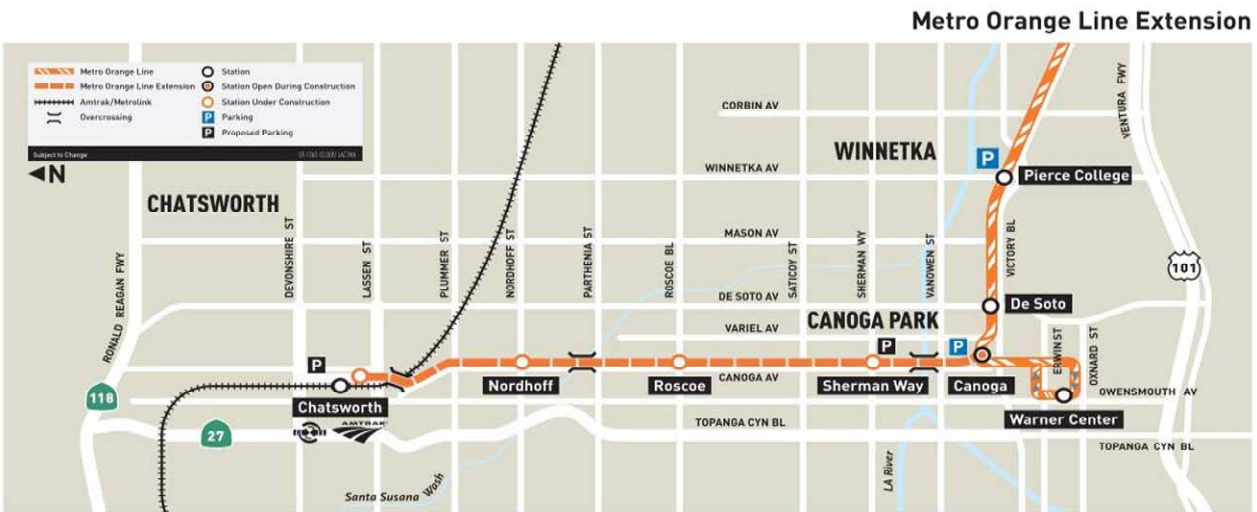
Concern No. 1: Metrolink to complete advance rail modification work.

Status/Action SCRRRA has the materials required to start track realignment work and has received the majority of the long lead signal equipment. Work will commence in December 2009. MTA is working with SCRRRA for the completion of track realignment, signal modification and at-grade Lassen Street crossing as early as possible to expedite bridge and Lassen street work.

Concern No. 2: Agreement with LADWP and Time Warner and completion of advance relocation of power, fiber optic and communication lines at Lassen Street.

Status/Action MTA is continuing to work with LADWP and Time Warner for the completion of underground relocation work on Lassen Street.

PROJECT SCOPE



C0943: Metro Orange Line Extension (MOL Ext) is a design-build contract to construct the majority of the Project scope of work. This contract will include design and construction of busway, new stations at Sherman Way (with park-and-ride), Roscoe Boulevard, Nordhoff Street, and Chatsworth Metrolink Station (with park-and-ride). The existing MOL Canoga park-and-ride lot will be modified with new station platforms. In addition, the contractor will design and construct approaches to the Lassen/RR Overcrossing, a bridge over the Los Angeles River, a smaller bridge over the Santa Susana Wash, street improvements, bicycle/pedestrian path, satellite bus parking facility, landscaping, systems equipment, and system integration and testing. In August 2009, the Lassen/RR Overcrossing (500' long 3-span bridge over active railroad tracks/Lassen Street) and Lassen Street Improvements were added to Contract C0943.


C0941: North Parking Lot (Chatsworth Station) is a construction contract for a new parking lot to be constructed north of the existing Chatsworth Metrolink Station. Completion of this lot is required before the south parking lot is modified to ensure that parking is continuously available for Metrolink patrons during construction of the MOL Extension.

Work Order – Advance Metrolink Rail Signal Modifications, Track Realignment, and At-Grade Lassen Crossing Enhancements is to be substantially completed by Metrolink in advance of the Design-Build Contractor commencing construction of portions of the bridge.

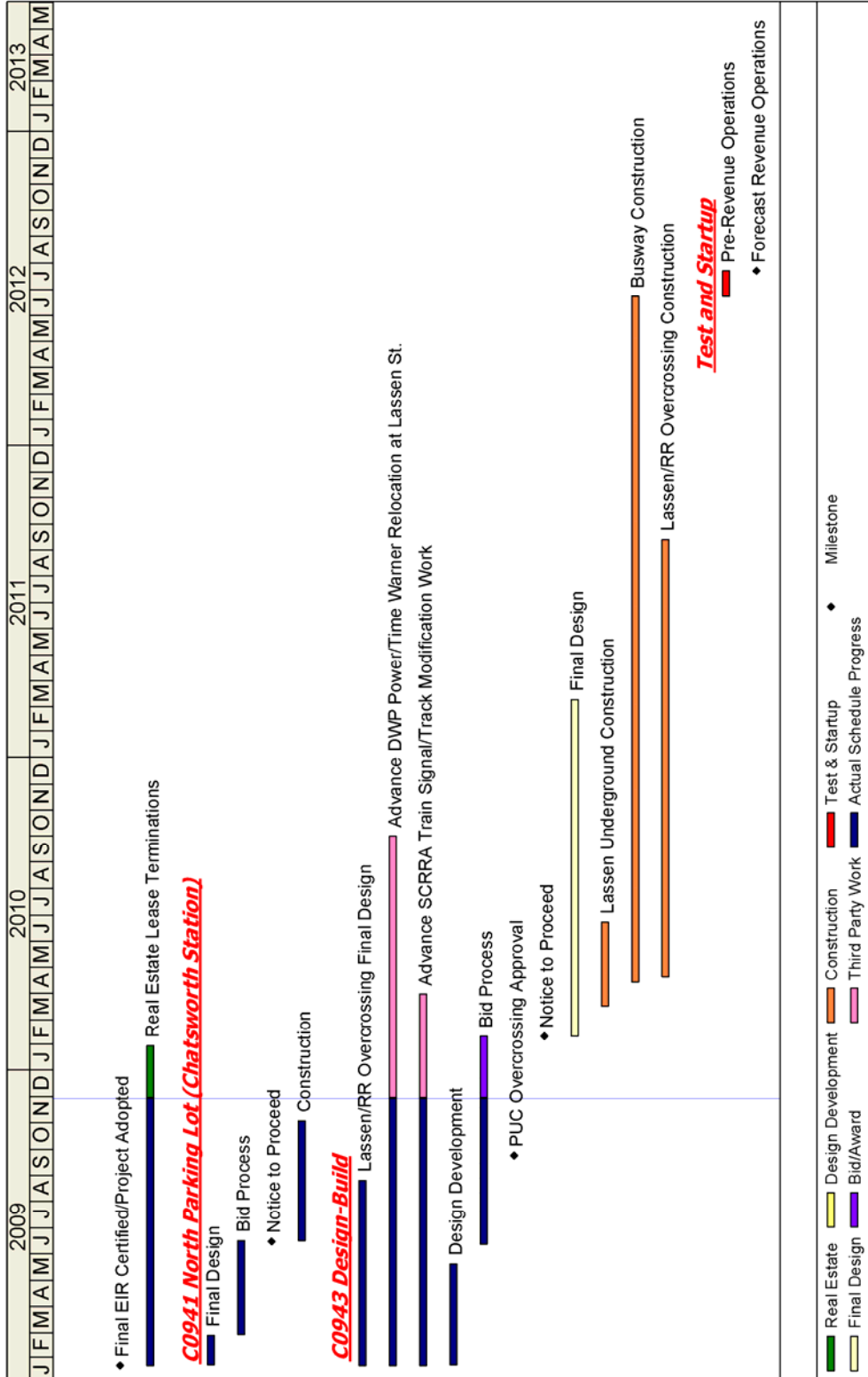
Work Order - Advance Relocation of power, fiber optic and communication lines on Lassen Street is to be completed by LADWP and the affected utility companies prior to the Design-Build Contractor commencing construction of portions of the bridge.

KEY MILESTONE SCHEDULE SIX-MONTH LOOK AHEAD

	Milestone Date	Nov-09	Dec-09	Jan-10	Feb-10	Mar-10	Apr-10
C0941: North Parking Lot Substantial Completion	11/3/09A	◆					
C0943: CPUC G088 Lassen St. Application	11/25/09A	△					
(Forecast) CTC Approve FEIR	12/10/09*		△				
(Forecast) CTC Allocate Project Funding	12/10/09*		△				
(Forecast) C0943: Award	1/19/10*			◆			
(Forecast) C0943: NTP	2/9/10*				◆		
(Forecast) Complete Real Estate Clearance	2/28/10*				◆		
(Forecast) C0943: Construction Start	4/14/10*						□

◆	MTA Staff	○	MTA Design Consultant		MTA Board Action
△	Other Agencies	□	Contractor	*	New Date

SUMMARY SCHEDULE



SCHEDULE NARRATIVE

The project critical path starts with C0943 contractor's bid preparation followed by receipt of bids and execution of contract. Next, submittal and approval of retaining wall designs is critical so that retaining wall construction for the south east and south west retaining walls can commence. Subsequently, actual construction of the retaining walls is critical so that busway construction can occur concurrently with bridge construction. The critical path continues with each successive busway reach construction including grading, storm drain installation, crushed miscellaneous base and paving of each segment.

The critical path continues installing the fiber optic cable transmission system (FOCT) and followed by systems equipment to be installed at all the stations. This and local field acceptance testing (LFAT) will mark the end of construction and the beginning of final systems integration. The critical path concludes with system wide acceptance testing, pre-revenue operations, and the start of revenue operation.

PROJECT COST STATUS - 800119

**COST REPORT BY ELEMENT
UNITS IN MILLIONS**

ELEM- MENT	DESCRIPTION	ORIGINAL BUDGET	CURRENT BUDGET		COMMITMENTS		EXPENDITURES		CURRENT FORECAST		FORECAST VARIANCE
			PERIOD	TO DATE	PERIOD	TO DATE	PERIOD	TO DATE	PERIOD	TO DATE	
C	CONSTRUCTION	137.3	-	137.3	3.5	6.8	0.6	1.5	-	141.3	4.0
R	RIGHT-OF-WAY	8.0	-	8.0	-	3.7	-	0.1	-	4.0	(4.0)
V	VEHICLES / BUSES	9.9	-	9.9	-	-	-	-	-	9.9	-
P	PROFESSIONAL SERVICES	38.7	-	38.7	-	12.8	0.8	4.2	-	38.7	-
PC	PROJECT CONTINGENCY	21.7	-	21.7	-	-	-	-	-	21.7	-
PR	PROJECT REVENUE	-	-	-	-	-	-	-	-	-	-
TOTAL		215.6	-	215.6	3.5	23.2	1.4	5.8	-	215.6	-

NOTE: EXPENDITURES ARE CUMULATIVE THROUGH OCTOBER 2009.

PROJECT COST ANALYSIS

Original Budget and Current Budget:

The Life of Project Budget for the Metro Orange Line Extension Project was adopted in January 2009 for a value of \$215.6 million.

Current Forecast:

The total project forecast remains the same at \$215.6 million.

Commitments:

The commitments increased \$3.5 million this period primarily for third party scope of work with Southern California Regional Rail Authority. The \$23.2 million in commitments to date represents 10.8% of the Original Budget.

Expenditures:

Expenditures are cumulative through October 2009. The expenditures increased by \$1.4 million this period. In the Construction element there was an increase of \$0.6 million for costs associated with contract C0941 – North Parking Lot (Chatsworth Station), environmental consultants, and third party scope of work. In Professional Services element there was an increase of \$0.8 million primarily for costs associated with engineering consultant, construction management support, project management assistance, construction lab testing, community outreach consultant services, and MTA Project Administration. The \$5.8 million in expenditures to date represents 2.7% of the current budget.

FINANCIAL/GRANT STATUS

Project 800119 – Metro Orange Line Extension

NOVEMBER 2009

STATUS OF FUNDS BY SOURCE

\$ in millions

SOURCE	(A)	(B)	(C)	(D)	(D/B)	(E)	(E/B)	(F)	(F/B)
	ORIGINAL BUDGET (1)	TOTAL FUNDS ANTICIPATED (2)	TOTAL FUNDS AVAILABLE	COMMITMENTS \$	%	EXPENDITURES \$	%	BILLED to FUNDING SOURCE \$	%
PROP 1B FUNDS-PTMISEA*	68.0	68.0	40.5	23.2	34%	5.8	9%	3.3	5%
PROP 1B FUNDS-SLTPP**	73.8	73.8			0%		0%		0%
PROP C 25%	73.8	73.8			0%		0%		0%
TOTAL	215.6	215.6	40.5	23.2	11%	5.8	3%	3.3	2%

(1) Based on January 2009 MTA Board adoption of Life of Project Budget.

(2) Based on March 2009 Capital Programming Revised Financial Plan.

* PTMISEA: Public Transportation Modernization and Improvement Surface Enhancement Account

** SLTPP: State - Local Transportation Partnership Program

NOTE: Expenditures are cumulative through October 2009.

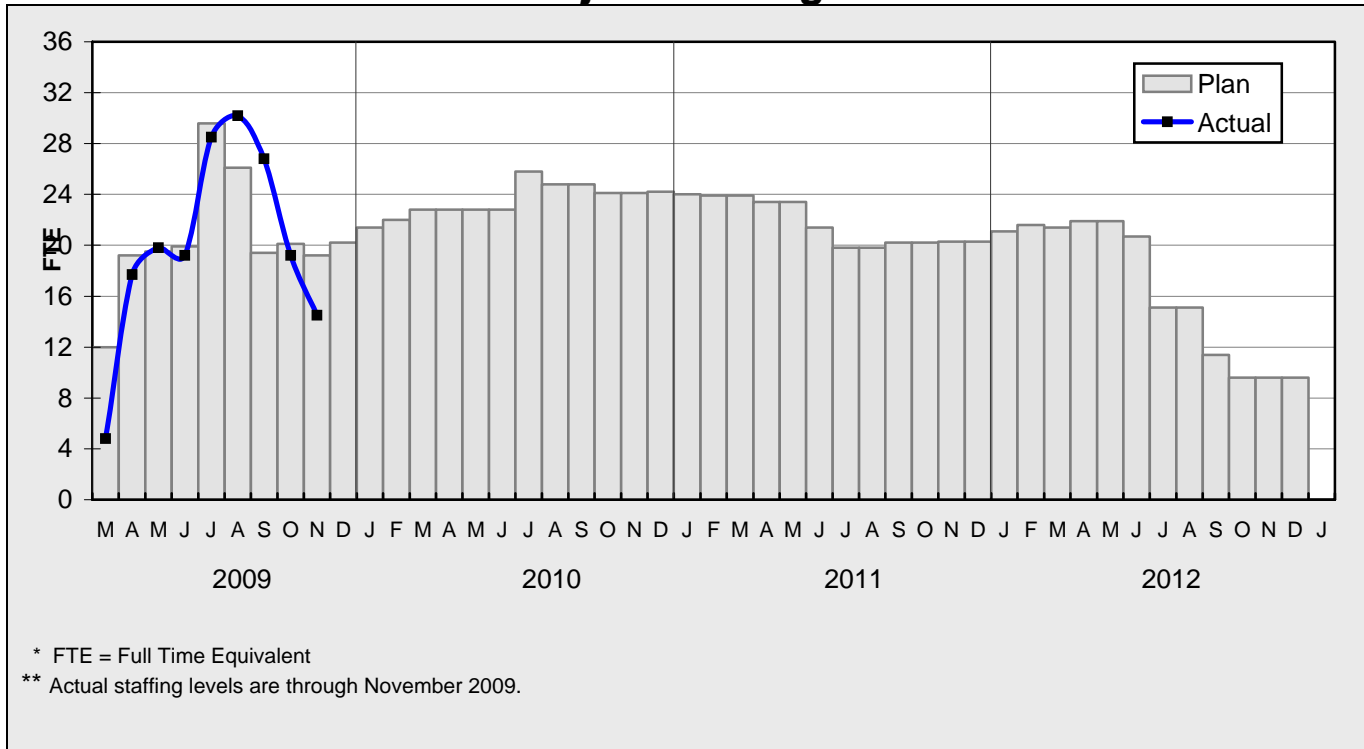
STATUS OF FUNDS ANTICIPATED

STATE PROP 1B – PTMISEA: MTA submitted a state application for \$8.9 million in September 2008. The State approved the \$8.9 million application in March 2009. Funds were received in July 2009 and are available for drawdown. MTA submitted a request to Caltrans to allocate \$31.6 million of FY09 funds to the project. The allocation was approved in November 2009 and funds have been received.

STATE PROP 1B – SLTPP: MTA to request an allocation of \$14.7 million in SLPP funds at the December 2009 CTC Meeting. If allocation is not approved, MTA will request a Letter of No Prejudice authority to award the C0943 Design-Build contract and begin construction activities in advance of receiving an allocation of SLPP funds. MTA anticipates the CTC at the December meeting will approve the FEIR and a Resolution for Future Consideration of Funding.

STAFFING STATUS

Total Project Staffing - FTES



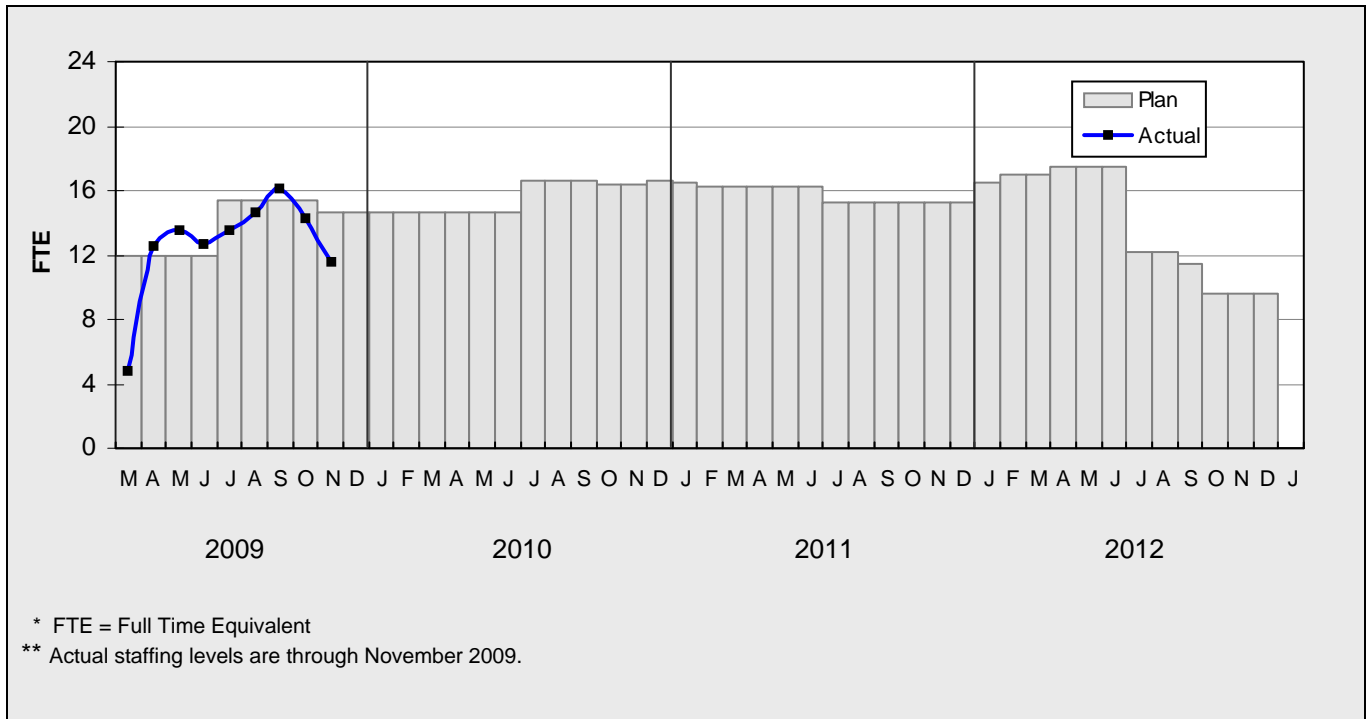
Total Project Staffing

The overall FY10 Total Project Staffing plan averages 23.1 FTE's per month.

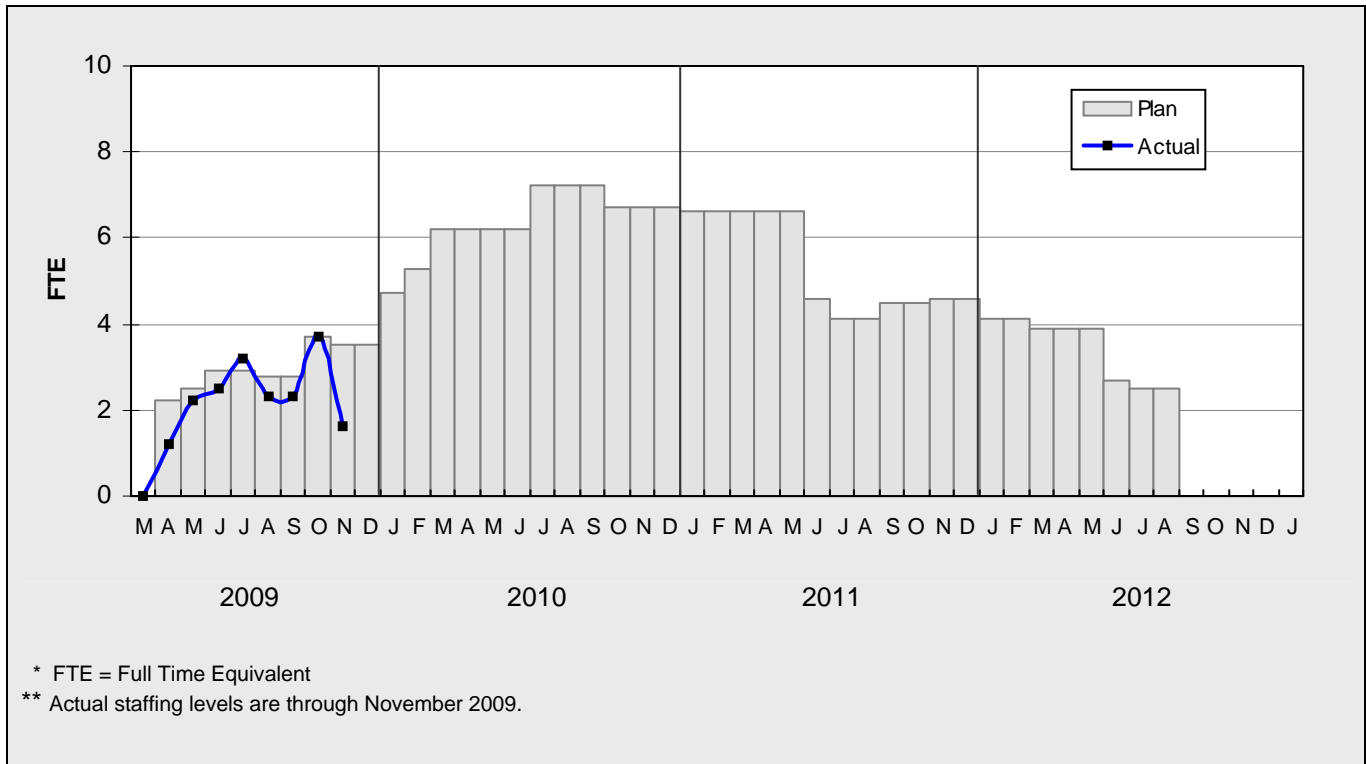
For November 2009, there was a total of 11.6 FTE's for MTA's Project Administration staff and 2.9 FTE's for consulting staff. The total project staffing was 14.5 FTE's for November 2009.

STAFFING STATUS

MTA STAFFING - FTES

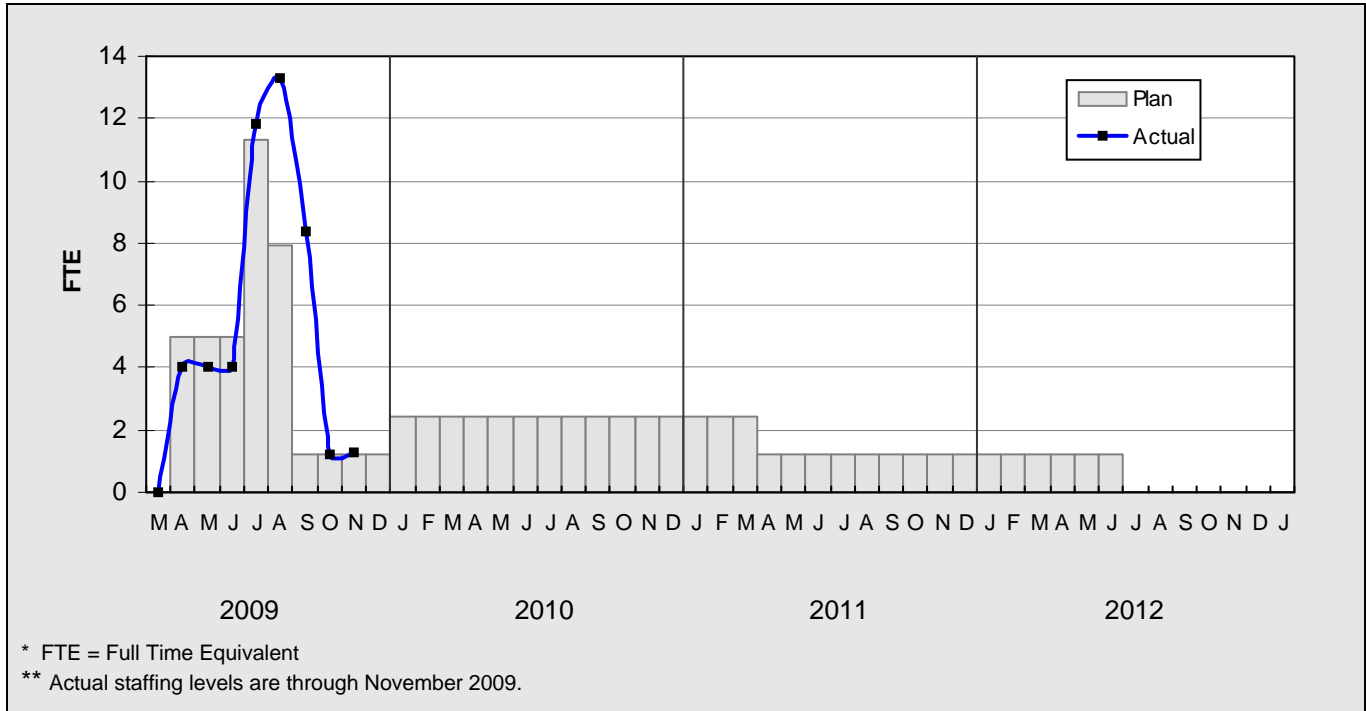


CONSTRUCTION MANAGEMENT SUPPORT SERVICES CONSULTANT - FTES



STAFFING STATUS

ENGINEERING SERVICES CONSULTANT



REAL ESTATE STATUS

- There are a total of 82 leases and 7 Licenses on the MOL Extension Project. The number of leases that will be terminated is 78 and the number of Licenses that will be relocated is 2. Four (4) tenants will be permitted to remain on the right of way; three tenants with amended leases which will permit them to co-exist with the busway and one under existing lease.
- Termination Notices have been issued to 78 Tenants which includes 23 signboards and 55 ground leases. There were a total of 52 businesses to be relocated.
- Thirteen signboards have been removed and 10 remain. CBS Outdoor vacated date extended to December 31, 2009.
- MTA awarded the Contract C0954 CMHP Privacy Fence in November 2009. CMHP owners have agreed to grant a right of entry for the construction and maintenance of the privacy fence and dedicate easements for the bikeway and traffic signal. The Agreement will be executed in December and construction will start after receipt of a Right of Entry from Union Pacific.
- UP entered into a Letter Agreement agreeing to issue a right-of-entry and the easements required for construction of facilities within UP property. Agreement reached on purchase price. Documentation of the right of entry easements is underway.
- Staff mailed reminder letters to the tenants who have received termination notices effective December 31, 2009

REAL ESTATE STATUS – LEASES

	Total Leases	Total Leases to be Terminated	Received Termination Notice	Unlawful Detainer Action	Relocation Completed	Relocations Remaining	Available for Demolition	Available for Construction
Leases	82	78	78	11	33	19	33	33

ENVIRONMENTAL STATUS

- Completed Voluntary Clean-Up Agreement for signature by Metro and the Department of Toxic Substances Control (DTSC). Agreement is expected to be signed in December 2009.

COMMUNITY RELATIONS STATUS

- Continued community mapping and business profiles.
- Provided briefings to the Offices of City and County elected officials regarding DWP power poles relocation at Lassen Street.

QUALITY ASSURANCE STATUS

- The following work elements were monitored during the period:
 - Photographed all existing sidewalks, curbs and gutters at all intersections throughout the Canoga North extension.
 - Documented existing conditions for future privacy fence at the Chatsworth Mobile Home.
 - Assembled project QC Inspection Manual for C0943 implementation.
 - Continue to access and investigate previously inaccessible areas to assess the type and quantity of structures to be demolished.

QUALITY ACTION REQUEST STATUS

Project #	QAR #	Description	Due Date	Status	Comments
C0941					
C0943					

SAFETY STATUS

- Sully-Miller and their subcontractors reported zero incidents and zero work hours for the month of November 2009. Total project-to-date work hours are 4,223.

Contractor	Project To Date										
	Work-Hours	Cases			Days Lost			Incident Rates			
		Total Cases	Total Lost Time	Retricted Duty	Current	Carry Over	Total	Total Cases	Total Lost Time	Retricted Duty	Days Lost
C0941	4,223	0.0	0.0	0.0	0.0	0.0	0.0	0.0	0.0	0.0	0.0
C0943	0	0.0	0.0	0.0	0.0	0.0	0.0	0.0	0.0	0.0	0.0
Subtotals	4,223	0.0	0.0	0.0	0.0	0.0	0.0	0.0	0.0	0.0	0.0
Metro Cons. Mgm	0	0.0	0.0	0.0	0.0	0.0	0.0	0.0	0.0	0.0	0.0
Totals	4,223	0.0	0.0	0.0	0.0	0.0	0.0	0.0	0.0	0.0	0.0

ART DEVELOPMENT STATUS

- Initiated contacts for Arts Advisory Group representatives.
- Researched locations within the project area for the Arts Advisory Group Meetings.

THIRD PARTY AGREEMENT STATUS

Third Party	Type of Agreement	Forecast Execution Date	Required Need Date	Status/ Comments
City of Los Angeles	Amendment	12/02	N/A	Master Cooperative Agreement executed December 2002. Work Order for design review services was issued in August 2008. Special Permitting Process (SPP) was approved in July 2009. Authorization received from MTA Board in September 2009 for FY10 Work Orders. Work Order for construction services issued in November 2009.
Los Angeles County	Master	Completed	N/A	Master Cooperative Agreement executed in April 2003.
LADWP (Power)	Amendment	12/09	12/09	Work Orders for critical work issued under current MCA. Authorization received from MTA Board in June 2009 for new Work Order Agreements. Contract Work Order for design review and inspection services issued in June 2009. Letter of Understanding requesting concurrence for the underground relocation of overhead power lines sent in November 2009.
The Gas Company	Amendment	Completed	N/A	Amendment to Master Cooperative Agreement executed in May 2005.
AT&T Long Distance (Formerly PacBell)	Amendment	Completed	N/A	Master Cooperative Agreement amendment executed in May 2005.
TCG Los Angeles, Inc.	Agreement	Completed	N/A	Amendment to Master Cooperative Agreement executed in May 2005.
AT&T California	Amendment	Completed	N/A	Amendment to Master Cooperative Agreement executed in May 2005. Work Order for design development services was issued in February 2009.
Qwest (Formerly Adelphia)	Agreement	Completed	N/A	Work Order for engineering design services was issued in February 2009. Work Order for utility relocation/protection at Chatsworth Metrolink Station site issued in April 2009. Authorization received from MTA Board in July for new Work Order Agreements. Amendment to Master Cooperative Agreement in process. Agreement for relocation work in process.

THIRD PARTY AGREEMENT STATUS (Contd)

L.A. County Department of Public Works/L.A. County Flood Control District	Agreement	Completed	N/A	Master Cooperative Agreement executed 1991 between SCRTD and LA County Flood Control District. Work Order for design review and permits in process.
Sprint (Formerly MCI Worldcom)	Amendment	Completed	N/A	Amendment to Master Cooperative Agreement executed in May 2005. Work Order for design development and preliminary engineering support services was issued in February 2009. Agreement for support services in process.
Verizon Wireless (Verizon Business MCI)	Amendment	Completed	N/A	Amendment to Master Cooperative Agreement executed in May 2005. Work order issued for engineering support services issued in February 2009.
SCRRA (Metrolink)	Agreement	9/09	9/09	Work Order for design services and other support to accelerate the project authorized in January 2009. Authorization received from MTA Board in May 2009 for new Work Order Agreements. Agreement was executed for design, construction and other support services in October 2009.
UPRR	Agreement	Completed	N/A	Master Cooperative Agreement executed in June 1989. Work Order Authorized for design review services in February 2009. Processing easements for Lassen Overcrossing construction.
Level 3 Communications (GTE)	Agreement	Completed	N/A	Master Cooperative Agreement executed in June 1986.
Time Warner Cable	Agreement	10/09	10/09	Amendment to Master Cooperative Agreement executed in August 2002. Agreement based on Letter of Understanding for underground relocation at Lassen Street in process.
MWD	Agreement	Completed	N/A	Cooperative Agreement for Long Beach-LA Rail System December 1986. A May 2003 letter from MTA concurs that no additional MWD amendment is required. Both agencies will review submittals upon request without charge, unless protection, relocation and/or adjustments are required.

CONTRACT C0941 STATUS

<p>North Parking Lot Chatsworth Station Contract No.: C0941 Contractor: Sully-Miller Contracting Co.</p>								
<p>Status as of: November 27, 2009</p>								
<p>Progress/Work Completed: Final cleanup and punchlist was completed.</p> <p>Areas of Concern:</p>			<p>Major Activities (In Progress): · Contract close-out in progress.</p> <p>Major Activities Next Period: · Contract close-out in process.</p>					
<p>*Note A: Contract modification is in process to revise contract duration by eighteen calendar days due to approved time extension.</p>				Original Contract Dates	Time Extension	Current Contract	Forecast	Variance CDs
			Milestone 1 - Contract Completion *See Note A	10/16/09	0	10/16/09	11/3/2009A	-18
<p><u>Schedule Summary:</u></p> <p>Date of Award: 06/02/09</p> <p>Notice to Proceed: 06/18/09</p> <p>Original Contract Duration: 120</p> <p>Current Contract Duration: 120</p> <p>Elapsed Time from NTP: 164</p>			<p>Cost Summary: \$ In 000's</p> <p>1. Award Value: 1,286.80</p> <p>2. Executed Modifications: (15.90)</p> <p>3. Approved Change Orders: 0.00</p> <p>4. Current Contract Value (1 + 2 + 3): 1,270.90</p> <p>5. Pending Changes: 19.90</p> <p>6. Incurred Cost: 1,290.80</p>					

CONTRACT C0943 STATUS

<p>Design/Build Contract Contractor: TBD</p>	<p>Contract No.: C0943 Status as of: November 27, 2009</p>					
<p>Progress/Work Completed: Continued bid evaluation.</p> <p>Areas of Concern:</p>	<p>Major Activities (In Progress): . Continued bid evaluation.</p> <p>Major Activities Next Period: .Continue bid evaluation process.</p>					
		<p>Original Contract Dates</p>	<p>Time Extension</p>	<p>Current Contract</p>	<p>Forecast</p>	<p>Variance CDs</p>
	<p>Milestone 1 - Contract Substantial Completion</p>	<p>TBD</p>	<p>0</p>	<p>TBD</p>	<p>TBD</p>	
	<p>Milestone 2 - Complete Universal Fare System Requirements</p>	<p>TBD</p>	<p>0</p>	<p>TBD</p>	<p>TBD</p>	
	<p>Milestone 3 - Elect/Communication Requirements Complete</p>	<p>TBD</p>	<p>0</p>	<p>TBD</p>	<p>TBD</p>	
	<p>Milestone 4 - Passenger Information System Testing Complete</p>	<p>TBD</p>	<p>0</p>	<p>TBD</p>	<p>TBD</p>	
	<p>Milestone 5 - Complete</p>	<p>TBD</p>	<p>0</p>	<p>TBD</p>	<p>TBD</p>	
	<p>Milestone 6 - Landscape and Planting Maintenance and Warranty</p>	<p>TBD</p>	<p>0</p>	<p>TBD</p>	<p>TBD</p>	
	<p>Milestone 7 - Complete DWP Powerline Overhead/Underground at Lassen Street</p>	<p>TBD</p>	<p>0</p>	<p>TBD</p>	<p>TBD</p>	
<p><u>Schedule Summary:</u></p> <p>Date of Award: TBD</p> <p>Notice to Proceed: TBD</p> <p>Original Contract Duration: 730</p> <p>Current Contract Duration: 730</p> <p>Elapsed Time from NTP: 0</p>	<p>Cost Summary: \$ In 000's</p> <p>1. Award Value: TBD</p> <p>2. Executed Modifications: 0.00</p> <p>3. Approved Change Orders: 0.00</p> <p>4. Current Contract Value (1 + 2 + 3): -</p> <p>5. Pending Changes: 0.00</p> <p>6. Incurred Cost: 0.00</p>					

CHRONOLOGY OF EVENTS

1990	MTA purchased abandoned railroad right-of-way.
April 1, 2003	Regionally Significant Transportation Investment Study (RSTIS) completed and approved by MTA Board.
September 28, 2006	MTA Board authorized the Chief Executive Officer to begin environmental clearance and Preliminary Engineering for a northern extension of the Metro Orange Line along the MTA-owned Canoga Avenue rail right-of-way to the Chatsworth Metrolink Station.
November 7, 2006	MTA issues RFP No. PS43701952 for Northern/Canoga Extension of the Metro Orange Line to solicit Contractor to environmentally clear and complete the Preliminary Engineering with Options for Design Development (Phase 3) and Engineering Support Services During Construction (Phase 4).
March 22, 2007	MTA Board approves Item No. 35 for staff to negotiate and execute a professional services contract with Iteris Inc. to environmentally clear and complete the preliminary engineering phase.
April 25, 2007	Limited Notice to Proceed issued to Iteris Inc authorizing Phase A - DEIR, Phase B – FEIR, Phase 1 Conceptual Engineering and Phase 2 Preliminary Engineering (18 month duration).
June 26, 2008	MTA Board selects Locally Preferred Alternative and receives Draft Environmental Impact Report.
July 17, 2008	Limited Notice to Proceed Issued to Iteris for PE bridge element only Scope of Work.
August 12, 2008	Commence Preliminary Engineering. Full Notice to Proceed Issued to Iteris.
September 10 and 15, 2008	Field meetings with City of Los Angeles staff to review field conditions and items to be included in preliminary Engineering (PE).
October 7, 2008	Field diagnostic meeting with SCRRA, CPUC and City of Los Angeles on at-grade rail crossing on Lassen Street and the bridge overcrossing.
November 7, 2008	Submitted pre-final PE drawings to third party agencies and utility companies for review and comments.

CHRONOLOGY OF EVENTS

January 22, 2009	MTA Board Certifies Final EIR, Adopts Project, approves Design-Build contracting approach, and approves engineering services by Iteris, Inc.
January 23, 2009	Issue Limited Notice to Proceed to Iteris Inc. Authorizing Design Development (Phase 3), Selected Final Design and Engineering Support Services During Construction (Phase 4).
February 19, 2009	Submitted draft Design-Build Contract C0943 documents to third party agencies and utility companies for review and comments.
March 3, 2009	Submitted 65% design drawings for Lassen Street improvements to third party agencies and utility companies for review and comments.
March 5, 2009	Executed Contract Modifications to Iteris, Inc. for engineering services including final design of selected elements.
March 13, 2009	Advertised Contract C0941 North Parking Lot (Chatsworth Station).
March 25, 2009	Submitted application to CPUC for MOL Extension grade separated two lane crossing above and across the railroad tracks near Lassen Street in Chatsworth.
April 6, 2009	First commencement of work at North Parking Lot (Chatsworth Station) was advance utility protection by third party utility company Qwest.
April 10, 2009	Executed Contract Work Order 1.00 to Stantec consulting, Inc for Construction Management Support Services for the MOL Extension. MTA Board awarded Contract MC069 to Stantec Consulting, Inc on February 25, 2009.
April 13, 2009	Received seven bids for Contract C0941 North Parking Lot (Chatsworth Station).
April 24, 2009	Submitted 85% design drawings for Lassen Street improvements to third party agencies and utility companies for review and comments.
May 5, 2009	Submitted 65% design drawings for Lassen/RR Overcrossing bridge structure to SCRRRA, UP, City of Los Angeles and other affected third party agencies and utility companies for review and comments. Also, initiated independent design check of the bridge structure.

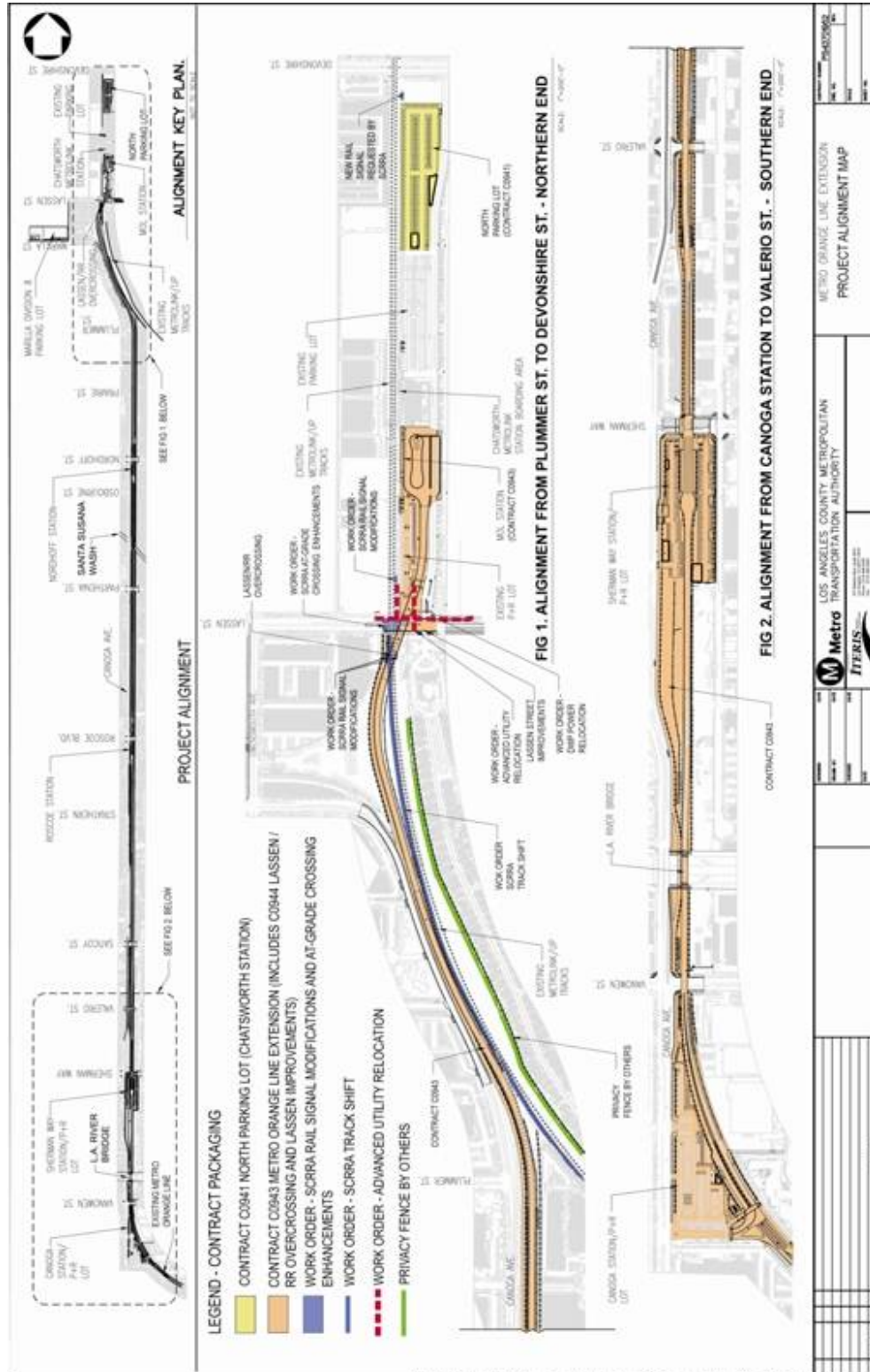
CHRONOLOGY OF EVENTS

May 7, 2009	Received for second time, bids for Contract C0941 North Parking Lot due to non-responsive bids received on April 13, 2009.
June 2, 2009 and June 18, 2009	Awarded Contract C0941 North Parking Lot (Chatsworth Station) and issued notice-to-proceed to Sully-Miller Contracting Company.
June 12, 2009	Advertised Contract C0943 Design-Build.
June 24, 2009	Held MOL Extension Project ground breaking ceremony at North Parking Lot site near Chatsworth Metrolink Station.
June 29, 2009	Issued Contract C0943 Amendment #1 to all bidders.
July 1, 2009	Conducted Contract C0943 pre-bid meeting.
July 6, 2009	Iteris submitted 100% design for Lassen Street improvements to LADOT, BOE, and BSL for review.
July 20, 2009	Iteris submitted final bridge design of Lassen overcrossing to SCRRA, PUC and City of Los Angeles for review.
July 21, 2009	Issued Contract C0943 Amendment #2 to all bidders.
July 27, 2009	SCRRA ordered long lead signal equipment.
August 7, 2009	Issued Contract C0943 Amendment #3 to all bidders.
August 28, 2009	Issued Contract C0943 Amendment #4 to all bidders.
September 3, 2009	Issued Contract C0943 Amendment #5 to all bidders.
September 30, 2009	Issued Contract C0943 Amendment #6 to all bidders.
October 2, 2009	Issued Contract C0943 Amendment #7 to all bidders.
October 15, 2009	Received four bids for Contract C0943 Design-Build.
October 21, 2009	Received eight bids for Contract C0954, Chatsworth Mobile Home Park Privacy Fence.
October 29, 2009	SCRRA executed Work Order Agreement with MTA for their railroad scope of work related to Lassen Street / RR Overcrossing.

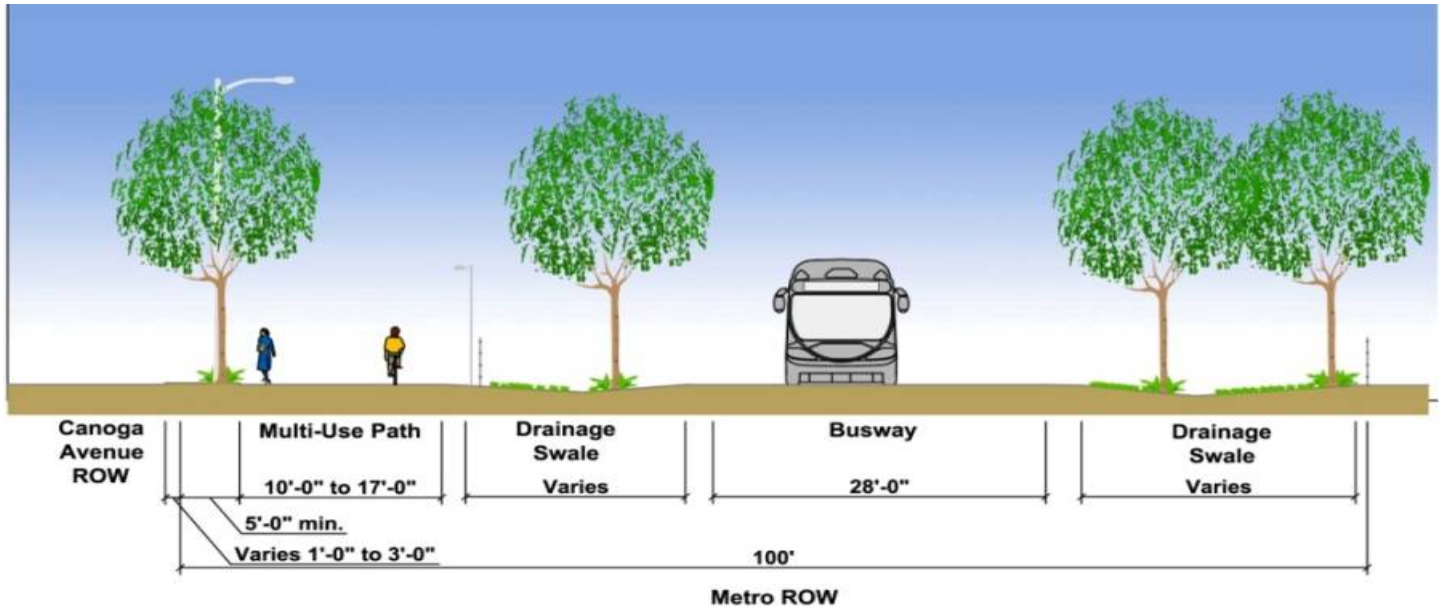
CHRONOLOGY OF EVENTS

- | | |
|-------------------|--|
| November 19, 2009 | Letter of Understanding requesting concurrence for the underground relocation of overhead power lines sent to LADWP and Time Warner Communication. |
| November 23, 2009 | Notice of Award to GMX Construction, Inc., for Contract No. C0954 Chatsworth Mobile Home Privacy Fence. |
| November 25, 2009 | Received authorization from State of California Public Utilities Commission, General Order 88, to improve and modify Lassen Street At-Grade Highway-Rail Crossing. |
| November 30, 2009 | Received from Union Pacific, letter agreement for right-of entry and easements required for construction within Union Pacific property. |

ALIGNMENT ILLUSTRATIONS



ALIGNMENT ILLUSTRATIONS (Cont'd)

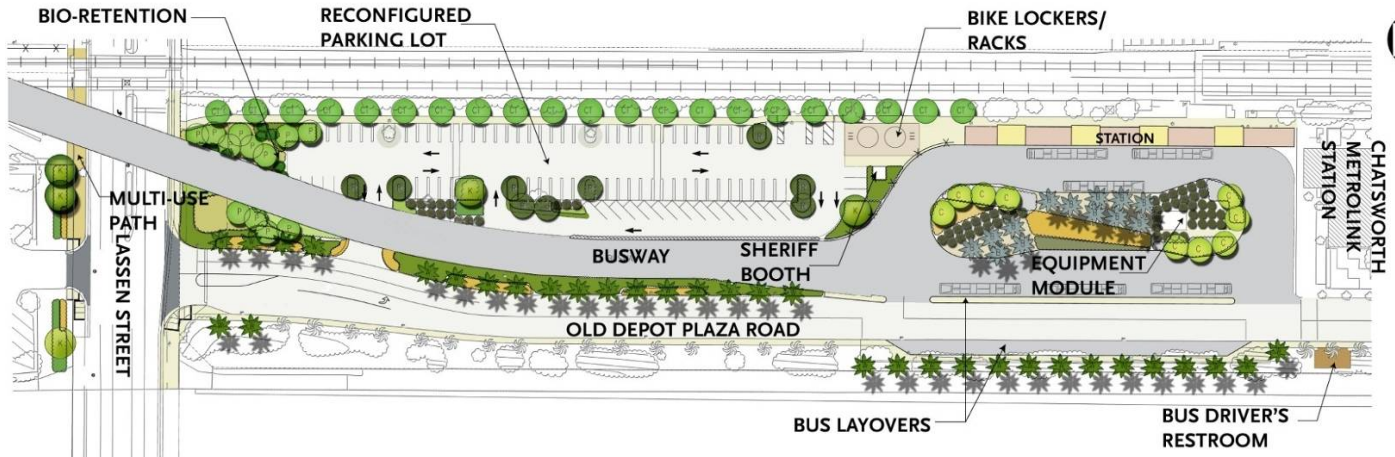


Duplicating features of operating Metro Orange Line.



Lassen Railroad overcrossing location.

ALIGNMENT ILLUSTRATIONS (Cont'd)



Rendering of MOL Chatsworth Station (proposed - not final)



APPENDIX COST AND BUDGET TERMINOLOGY

COMMITMENTS: The total of actual contract awards, executed change orders or amendments, approved work orders of Master Cooperative Agreements, offers accepted for purchase of real estate, and other Metro actions which have been spent or result in the obligation of specific expenditures at a future time.

CONSTRUCTION: Costs associated with Guideways, Stations, Support Facilities, Sitework/Special Conditions and Systems.

CONTINGENCY: A fund established at the beginning of a project to provide for anticipated but unknown additional costs that may arise during the course of the project.

CURRENT BUDGET: The Original Budget plus all budget amendments approved by formal Metro action. Also referred to as Approved Budget.

CURRENT FORECAST: Evaluation of costs to go combined with actual expenditures.

EXPENDITURES: The total dollar amount of funds expended by Metro for contractor or consultant invoices, third party invoices, staff salaries, real estate and other expenses that is reported in Metro's Financial Information System (FIS).

ORIGINAL BUDGET: The Original Project Budget as established by Metro Board of Directors at the time it authorizes Construction Project Management Division to commence full design and construction of the project (Project Adoption).

PROFESSIONAL SERVICES: Costs associated with General Engineering, Project Management Assistance, Construction Management Support services, Legal Counsel, Agency (Metro Staff) costs, and other Specialty Consultants.

RIGHT-OF-WAY: Includes purchase cost of parcels, easements, right-of-entry permits, escrow fees, and tenant relocation.

VEHICLES: Costs associated with the purchase of buses for project.

**APPENDIX
LIST OF ACRONYMS**

CADD	Computer Aided Drafting and Design
CALTRANS	California Department of Transportation
CD	Calendar Day
CDFG	California Department of Fish and Game
CM	Construction Manager
CMAC	Congestion Mitigation Air Quality
CN	Change Notice
CO	Change Order
COE	Corps of Engineers
CPM	Critical Path Method
CPUC	California Public Utilities Commission
CR	Camera Ready
CTC	California Transportation Commission
CUD	Contract Unit Description
D-B	Design-Build
D-B-B	Design-Bid-Build
DD	Design Development
DEIR	Draft Environmental Impact Report
DWP	Department of Water and Power
EIR	Environmental Impact Report
EIS	Environmental Impact Statement
FD	Final Design
FEIR	Final Environmental Impact Report
FIS	Financial Information System
FOCT	Fiber Optics Cable Transmission System
FTE	Full Time Equivalent
GDSR	Geotechnical Design Summary Report
IFB	Invitation for Bid
IPO	Integrated Project Office
JV	Joint Venture
LA	Los Angeles
LABOE	Los Angeles Bureau of Engineering
LACFCD	Los Angeles County Flood Control District
LADOT	Los Angeles Department of Transportation
LADPW	Los Angeles Department of Public Works
LADWP	Los Angeles Department of Water and Power
LFAT	Local Field Acceptance Test
LNTP	Limited Notice To Proceed
LONP	Letter Of No Prejudice
LRTP	Long Range Transportation Plan
METRO	Los Angeles County Metropolitan Transportation Authority
MIS	Major Investment Study

**APPENDIX
LIST OF ACRONYMS (Continued)**

MOL	Metro Orange Line
MOL EXT	Metro Orange Line Extension
MPSR	Monthly Project Status Report
N/A	Not Applicable
NTE	Not to Exceed
NTP	Notice To Proceed
OCIP	Owner-Controlled Insurance Program
P6	Primavera Project Planner® (scheduling software)
PC	Project Control
PE	Preliminary Engineering
PIP	Project Implementation Plan
PM	Project Manager
PMA	Project Management Assistance
PMP	Project Management Plan
P&P	Policies & Procedures
PR	Project Report
PSR	Project Study Report
QA	Quality Assurance
QAR	Quality Assurance Report
QC	Quality Control
QPSR	Quarterly Project Status Report
RFC	Request For Change
RFP	Request For Proposal
ROD	Revenue Operations Date
ROM	Rough Order of Magnitude
ROW	Right-Of-Way
RR	Railroad
RWQCB	Regional Water Quality Control Board
SCE	Southern California Edison
SCRRA	Southern California Regional Rail Authority (Metrolink)
SFV	San Fernando Valley
SIT	System Integration Testing
SOV	Schedule Of Value
SOW	Statement Of Work
SP	Special Provision
TBD	To Be Determined
UFS	Universal Fare System
VE	Value Engineering
WBS	Work Breakdown Structure
WP	Work Package