

# Metro Orange Line Extension



## **TABLE OF CONTENTS**

	Page No.
Project Overview.....	1
Management Issues.....	2
Project Status	
• Project Scope.....	3
• Schedule	
○ Key Milestones Six-Month Look Ahead .....	4
○ Summary Schedule.....	5
○ Schedule Narrative .....	6
• Project Cost Status and Analysis.....	7
• Financial/Grant Status.....	8
• Staffing.....	9-11
• Real Estate.....	12
• Environmental.....	13
• Community Relations.....	13
• Quality Assurance.....	14
• Safety.....	15
• Art Development.....	15
• Third Party.....	16-17
• Contract C0941 Status.....	18
• Contract C0943 Status.....	19
Chronology of Events.....	20-22
Alignment Illustrations.....	23-25
Construction Photographs.....	26
Appendices.....	27-29

## **PROJECT OVERVIEW**

*The Metro Orange Line (MOL) Extension Project is a four-mile extension of the Metro Orange Line extending from the Canoga park-and-ride lot to the Chatsworth Metrolink Station. The Project includes: busway, new station platforms at the Canoga park-and-ride lot, new stations at Sherman Way (with park-and-ride), Roscoe Boulevard, Nordhoff Street, and the Chatsworth Metrolink Station (with park-and-ride); grade-separation structure over active railroad tracks and Lassen Street (Lassen/RR Overcrossing) providing direct access into the Chatsworth Metrolink Station; Los Angeles River and Santa Susana Wash bridge crossings; and satellite bus parking facility. The project also includes street improvements, bicycle/pedestrian path, systems equipment and landscaping similar to the MOL.*

With the MTA Board adoption of the MOL Extension Project in January 2009, the Board directed staff to accelerate the completion of the Project to summer 2012.

In February, MTA awarded the major Design-Build Contract C0943 to Brutoco Engineering & Construction, Inc, and issued notice-to-proceed effective March 1, 2010. The Design-Build contractor will construct the majority of the Project scope of work including Lassen/RR Overcrossing and Lassen Street improvements.

Construction of the Privacy Fence at Chatsworth Mobile Home Park (CMHP) continues and will be substantially completed prior to starting major Lassen/RR Overcrossing construction work.

CPUC approved the proposed modifications affecting the at-grade Lassen Rail Crossing at Lassen Street. SCRRA to relocate interfering rail signals by April 2010.

LADWP and Time Warner have agreed with the scope and cost sharing for the relocation of interfering overhead power and communication lines to underground on Lassen Street prior to construction of portions of the bridge. Design change to increase the length of underground relocation to be issued to the Design-Build Contractor in March 2010.

MTA continues with the real estate actions required for the Project including relocations, lease terminations, lease modifications and right of entry/easement acquisitions in the Union Pacific property.

Other departments within MTA will be procuring Universal Fare System equipment as well as evaluating the articulated vehicle requirements and options.

To date, commitments are \$107.6 million or 50% of the Original Budget. Expenditures are \$8.1 million or 3.8% of the \$215.6 million Original Budget.

## **MANAGEMENT ISSUES**

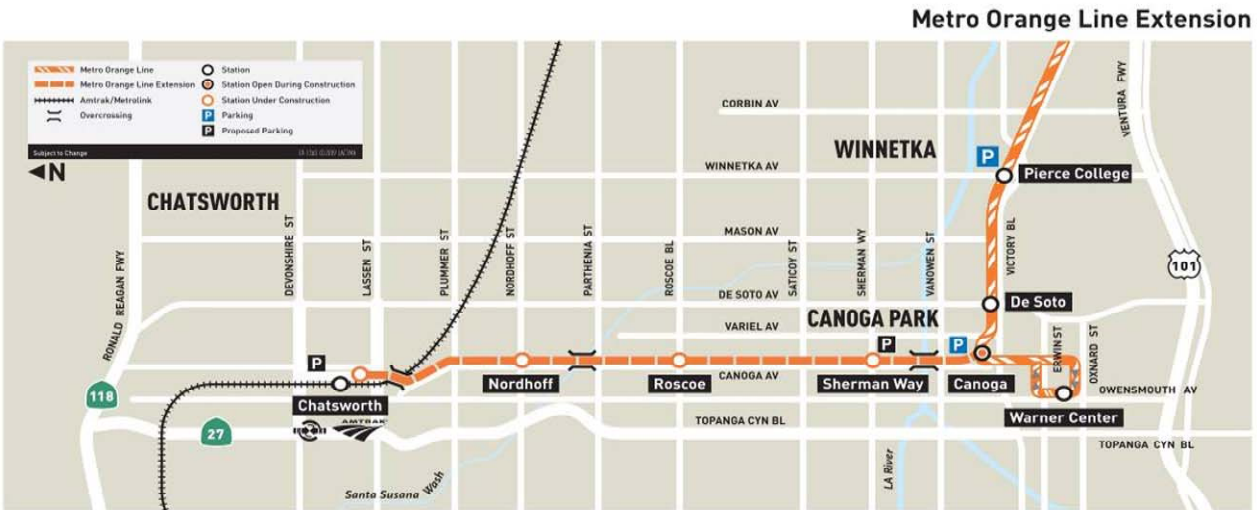
**Concern No. 1:** Metrolink to complete advance rail modification work.

**Status/Action** SCRRRA planned completion of signal modification work by March 2010 is now forecast for April 2010.

**Concern No. 2:** LADWP and Time Warner to complete relocation of power and communication lines at Lassen Street.

**Status/Action** MTA and the Design-Build Contractor are continuing to work with LADWP and Time Warner for the completion of underground relocation work on Lassen Street.

**PROJECT SCOPE**



**C0943: Metro Orange Line Extension (MOL Ext)** is a design-build contract to construct the majority of the Project scope of work. This contract will include design and construction of busway, new stations at Sherman Way (with park-and-ride), Roscoe Boulevard, Nordhoff Street, and Chatsworth Metrolink Station (with park-and-ride). The existing MOL Canoga park-and-ride lot will be modified with new station platforms. In addition, the contractor will design and construct approaches to the Lassen/RR Overcrossing, a bridge over the Los Angeles River, a smaller bridge over the Santa Susana Wash, street improvements, bicycle/pedestrian path, satellite bus parking facility, landscaping, systems equipment, and system integration and testing. In August 2009, the Lassen/RR Overcrossing (500' long 3-span bridge over active railroad tracks/Lassen Street) and Lassen Street Improvements were added to Contract C0943.

**C0941: North Parking Lot (Chatsworth Station)** is a construction contract for a new parking lot to be constructed north of the existing Chatsworth Metrolink Station. Completion of this lot is required before the south parking lot is modified to ensure that parking is continuously available for Metrolink patrons during construction of the MOL Extension.

**Work Order – Advance Metrolink Rail Signal Modifications, Track Realignment, and At-Grade Lassen Crossing Enhancements** is to be substantially completed by Metrolink in advance of the Design-Build Contractor commencing construction of portions of the bridge.

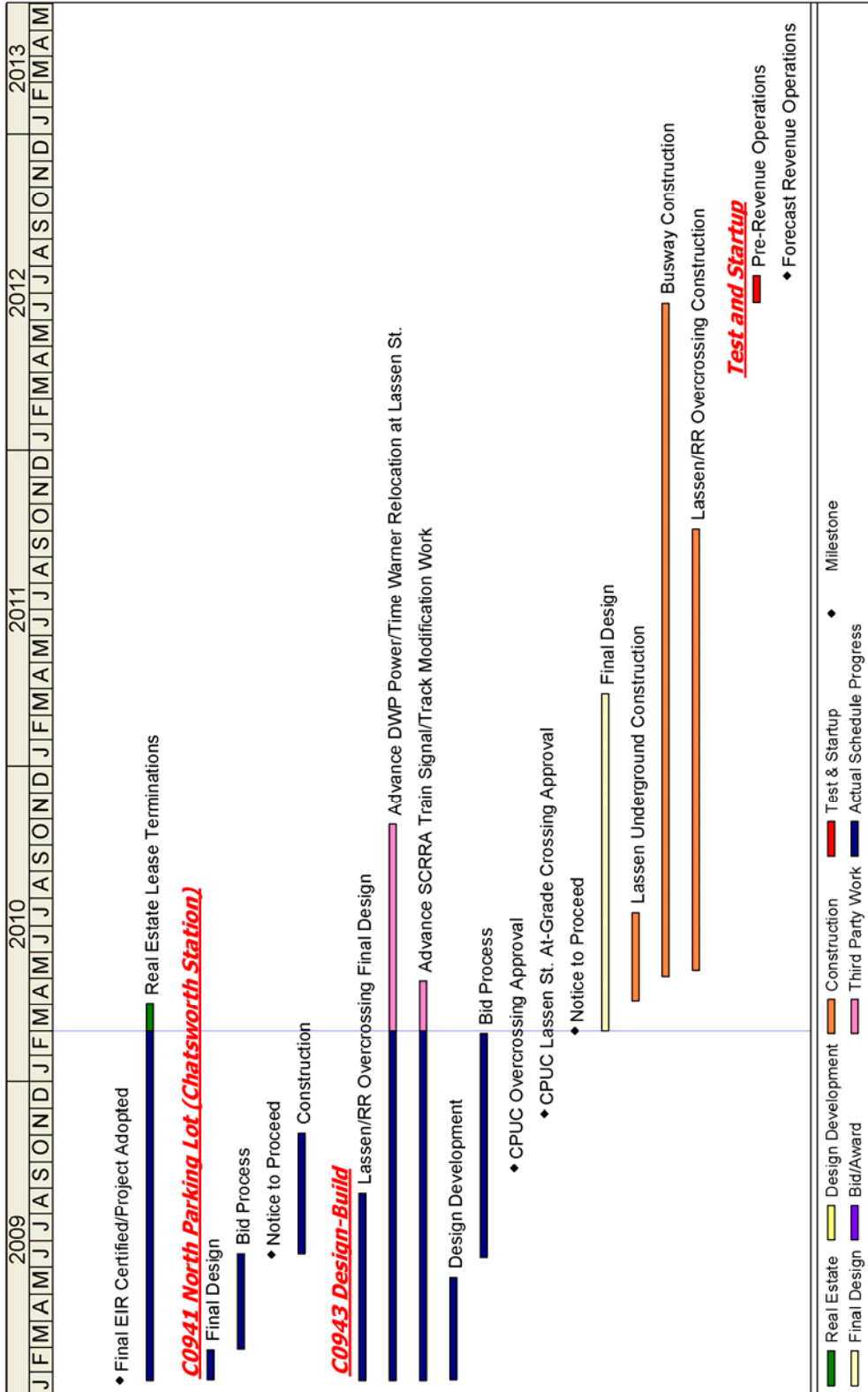
**Work Order - Advance Relocation of power, fiber optic and communication lines on Lassen Street** is to be completed by LADWP and the affected utility companies prior to the Design-Build Contractor commencing construction of portions of the bridge.

**KEY MILESTONE SCHEDULE SIX-MONTH LOOK AHEAD**

	Milestone Date	Feb-10	Mar-10	Apr-10	May-10	Jun-10	Jul-10
C0943: Award	2/10/10A	◆					
C0943: NTP	3/1/10A		◆				
(Forecast) Substantially Complete Real Estate Clearance	4/15/10			◆			
(Forecast) C0943: Commence Lassen Underground	4/2/10			■			
(Forecast) SCRRA Complete Rail Signal Modifications	4/15/10*			△			
(Forecast) C0943: MTA Board Approves UFS Modification	4/22/10*			Ⓜ			
(Forecast) C0943: Commence Demolition	5/10/10*				■		
(Forecast) LADWP Commence Underground Relocation on Lassen Street	7/1/10*						△

◆	MTA Staff	○	MTA Design Consultant	Ⓜ	MTA Board Action
△	Other Agencies	■	Contractor	*	New Date

## SUMMARY SCHEDULE



## **SCHEDULE NARRATIVE**

The project critical path starts with MTA issuing notice to proceed to Design-Build C0943 Contractor. Next, submittal and approval of retaining wall designs is critical so that retaining wall construction for the south east and south west retaining walls can commence. Subsequently, actual construction of the retaining walls is critical so that busway construction can occur concurrently with bridge construction. The critical path continues with each successive busway reach construction including grading, storm drain installation, crushed miscellaneous base and paving of each segment.

The critical path continues installing the fiber optic cable transmission system (FOCT) and followed by systems equipment to be installed at all the stations. This and local field acceptance testing (LFAT) will mark the end of construction and the beginning of final systems integration. The critical path concludes with system wide acceptance testing, pre-revenue operations, and the start of revenue operation.



**PROJECT COST STATUS - 800119**

**COST REPORT BY ELEMENT  
UNITS IN MILLIONS**

ELEM- MENT	DESCRIPTION	ORIGINAL BUDGET	CURRENT BUDGET		COMMITMENTS		EXPENDITURES		CURRENT FORECAST		FORECAST VARIANCE
			PERIOD	TO DATE	PERIOD	TO DATE	PERIOD	TO DATE	PERIOD	TO DATE	
C	CONSTRUCTION	137.3	-	137.3	77.6	84.8	-	2.6	(21.7)	119.6	(17.7)
R	RIGHT-OF-WAY	8.0	-	8.0	-	3.7	-	0.3	1.0	5.0	(3.0)
V	VEHICLES / BUSES	9.9	-	9.9	-	-	-	-	-	9.9	-
P	PROFESSIONAL SERVICES	38.7	-	38.7	6.2	19.2	0.6	5.2	(4.9)	33.8	(4.9)
PC	PROJECT CONTINGENCY	21.7	-	21.7	-	-	-	-	(3.0)	18.7	(3.0)
PB	PROJECT RESERVE	-	-	-	-	-	-	-	28.6	28.6	28.6
PR	PROJECT REVENUE	-	-	-	-	-	-	-	-	-	-
<b>TOTAL</b>		<b>215.6</b>	<b>-</b>	<b>215.6</b>	<b>83.8</b>	<b>107.7</b>	<b>0.6</b>	<b>8.1</b>	<b>-</b>	<b>215.6</b>	<b>-</b>

NOTE: EXPENDITURES ARE CUMULATIVE THROUGH JANUARY 2010.

**PROJECT COST ANALYSIS**

**Original Budget and Current Budget:**

The Life of Project Budget for the Metro Orange Line Extension Project was adopted in January 2009 for a value of \$215.6 million.

**Current Forecast:**

The total project forecast remains the same at \$215.6 million. During the period, the forecast for each cost element was re-evaluated based on the awarded value of the Design-Build Contract C0943. Also, a new element "Project Reserve" was added to the project forecast to account for the favorable bid received for the design-build portion of the project. Once construction reaches the 30% level of completion, the overall project forecast will be revaluated.

**Commitments:**

The commitments increased by \$83.8 million this period as MTA awarded the Design-Build Contract C0943 for \$82.5 million to Brutoco Engineering & Construction Inc. In addition, commitments this month included \$1.3 million for third party scope of work. The \$107.7 million in commitments to date represents 50% of the Original Budget.

**Expenditures:**

Expenditures are cumulative through January 2010. The expenditures increased by \$0.6 million this period primarily for costs associated with the design engineering consultant and MTA Project Administration. The \$8.1 million in expenditures to date represents 3.8% of the current budget.

**FINANCIAL/GRANT STATUS**

**Project 800119 – Metro Orange Line Extension**

**FEBRUARY 2010**

**STATUS OF FUNDS BY SOURCE**

\$ in millions

SOURCE	(A)	(B)	(C)	(D)	(D/B)	(E)	(E/B)	(F)	(F/B)
	ORIGINAL	TOTAL	TOTAL	COMMITMENTS		EXPENDITURES		BILLED to FUNDING	SOURCE
	BUDGET	FUNDS	FUNDS	\$	%	\$	%	\$	%
	(1)	ANTICIPATED	AVAILABLE						
	(2)								
PROP 1B FUNDS-PTMISEA*	68.0	68.0	40.5	68.0	100%	8.1	12%	4.8	7%
PROP 1B FUNDS-SLTPP**	73.8	73.8		39.6	54%		0%		0%
PROP C 25%	73.8	73.8			0%		0%		0%
<b>TOTAL</b>	<b>215.6</b>	<b>215.6</b>	<b>40.5</b>	<b>107.6</b>	<b>50%</b>	<b>8.1</b>	<b>4%</b>	<b>4.8</b>	<b>2%</b>

(1) Based on January 2009 MTA Board adoption of Life of Project Budget.

(2) Based on March 2009 Capital Programming Revised Financial Plan.

\* PTMISEA: Public Transportation Modernization and Improvement Surface Enhancement Account

\*\* SLTPP: State - Local Transportation Partnership Program

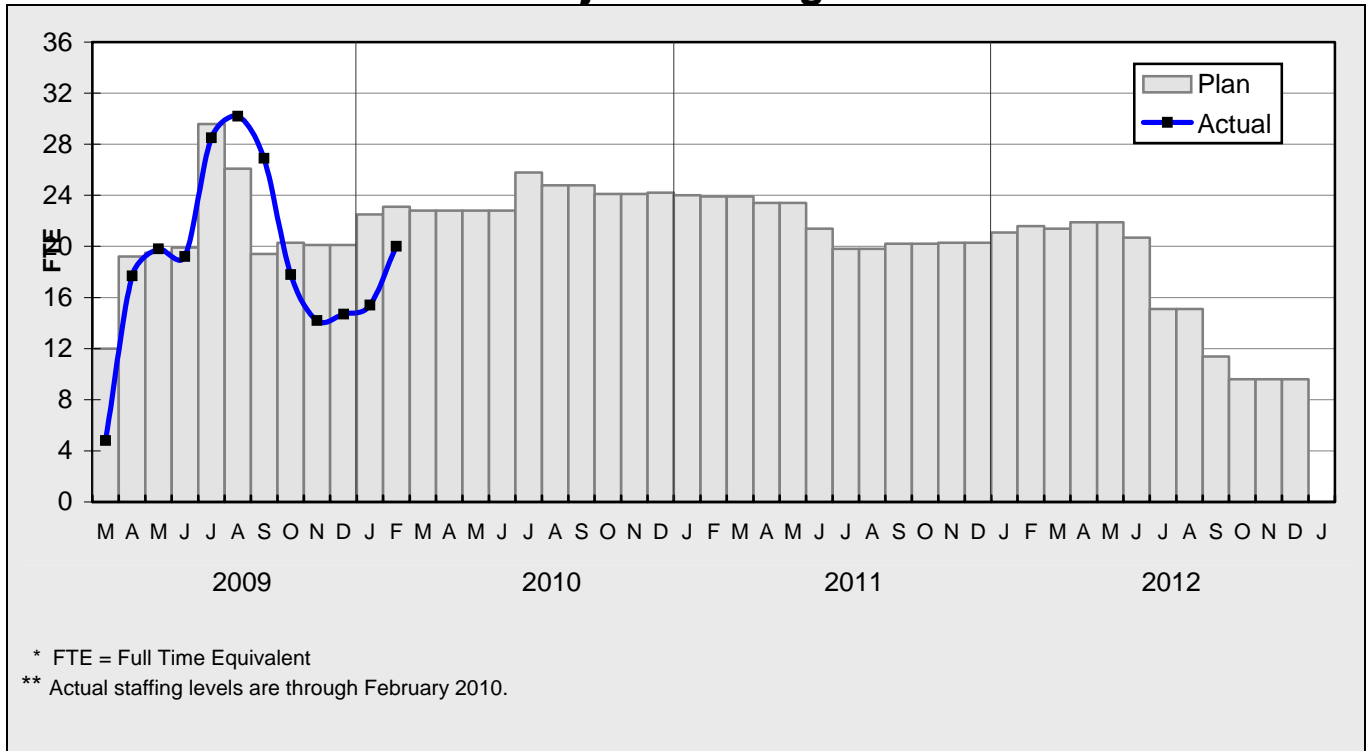
NOTE: Expenditures are cumulative through January 2010.

**STATUS OF FUNDS ANTICIPATED**

**STATE PROP 1B – PTMISEA:** MTA submitted a state application for \$8.9 million in September 2008. The State approved the \$8.9 million application in March 2009. Funds were received in July 2009 and are available for drawdown. MTA submitted a request to Caltrans to allocate \$31.6 million of FY09 funds to the project. The allocation was approved in November 2009 and funds have been received. MTA submitted a request to Caltrans to allocate \$29.5 million of FY10 funds to the Project. The allocation is expected to be approved by April 2010.

**STATE PROP 1B – SLTPP:** MTA requested an allocation of \$14.7 million in SLPP funds at the December 2009 CTC Meeting and the allocation was not approved. At the January 2010 CTC Meeting, the CTC approved a request to use \$14.7 million in Measure R Transit Capital 35% funds for a Proposition 1B Letter of No Prejudice arrangement in lieu of the FY 2010 SLTPP funds. Based on the recent passage of AB672, MTA will use the substitute funding and will seek reimbursement from the state in the future.

**STAFFING STATUS  
Total Project Staffing - FTES**



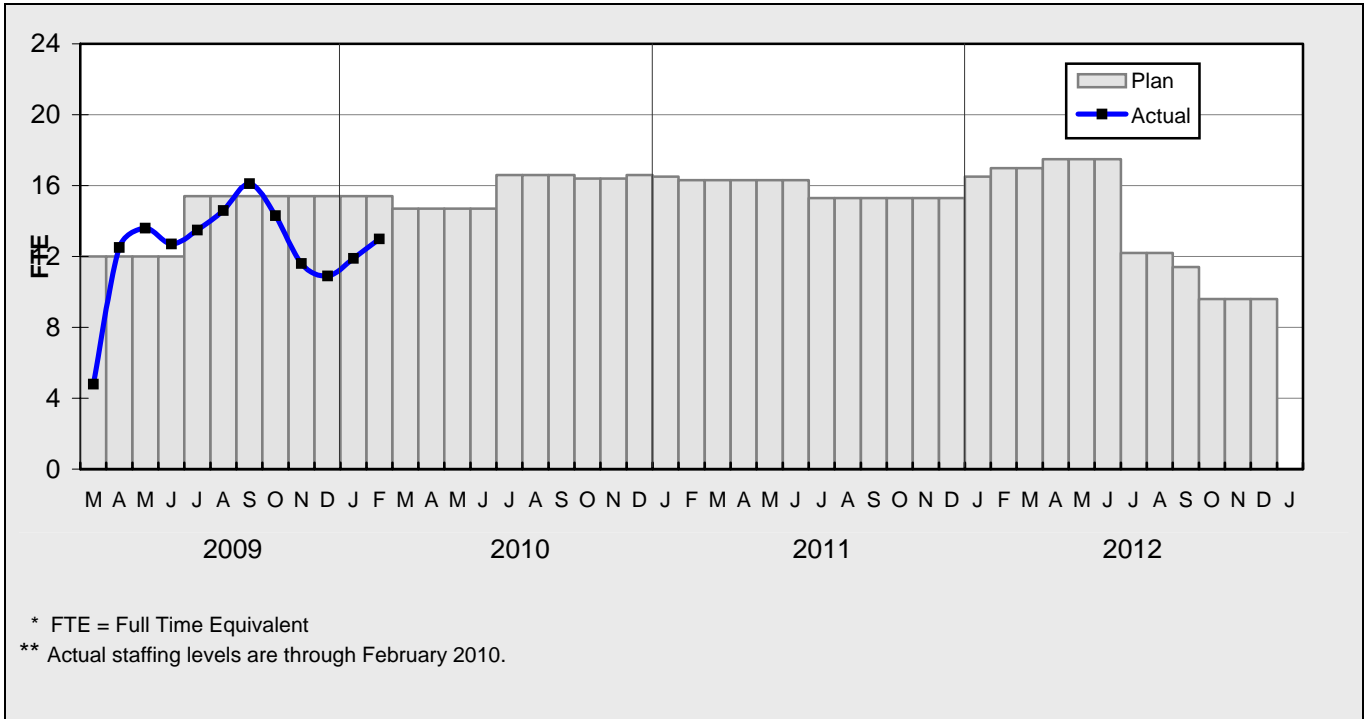
**Total Project Staffing**

The overall FY10 Total Project Staffing plan averages 23.1 FTE's per month.

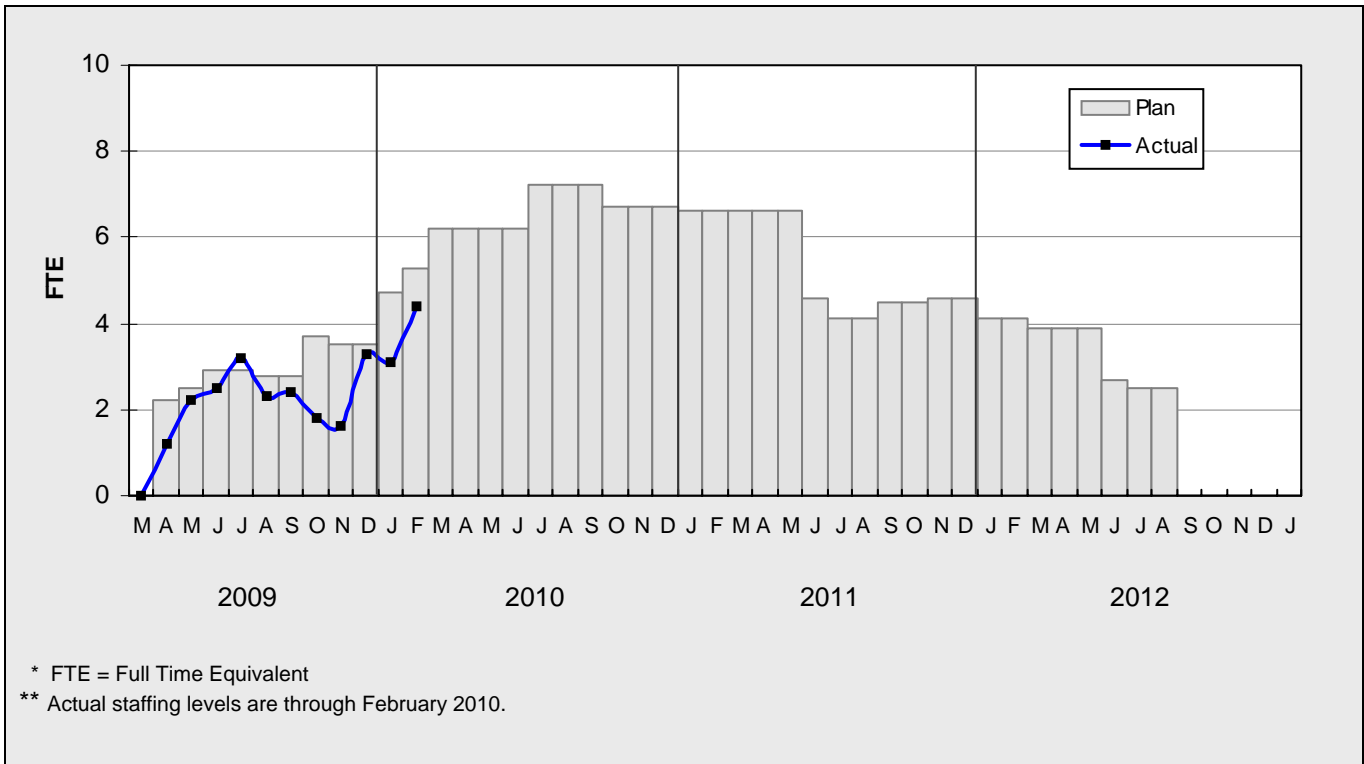
For February 2010, there were a total of 13.2 FTE's for MTA's Project Administration staff and 6.8 FTE's for consulting staff. The total project staffing was 20.0 FTE's for February 2010.

## STAFFING STATUS

### MTA STAFFING - FTES

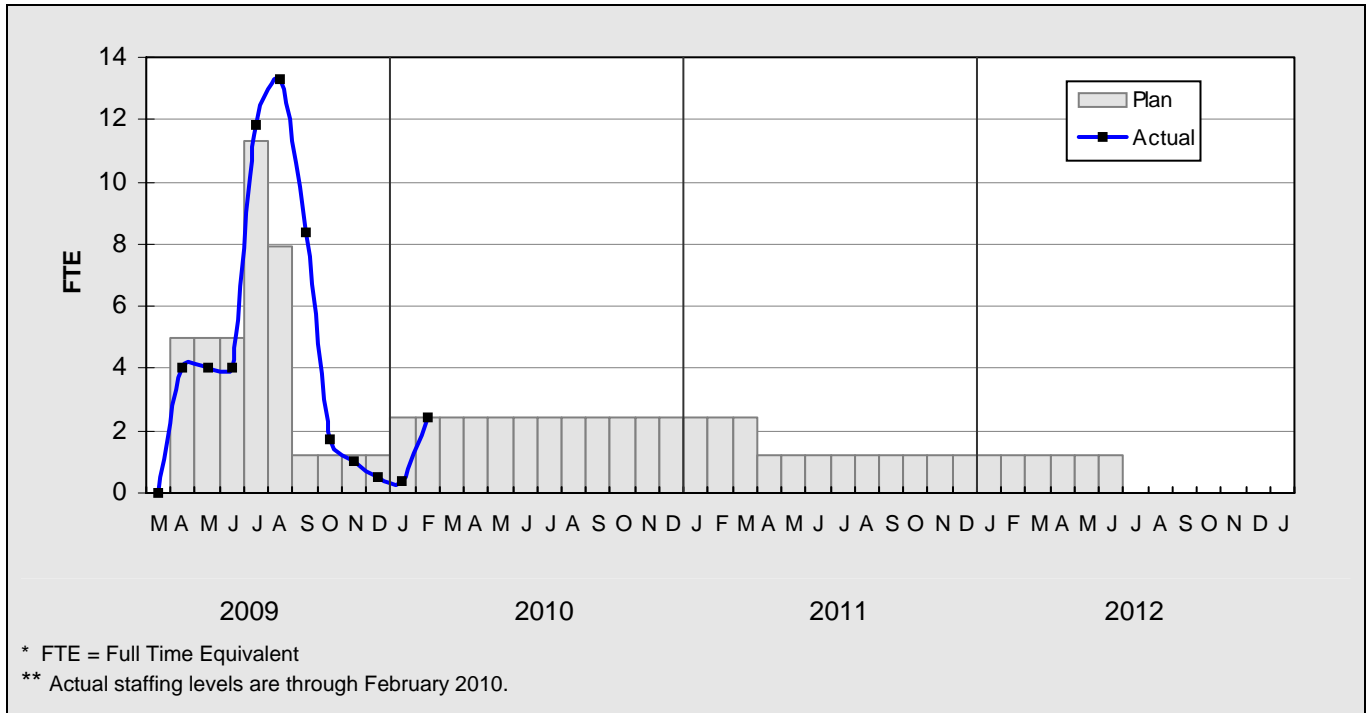


## CONSTRUCTION MANAGEMENT SUPPORT SERVICES CONSULTANT - FTES



## STAFFING STATUS

### ENGINEERING SERVICES CONSULTANT



**REAL ESTATE STATUS**

- There are a total of 82 leases and 7 Licenses on the MOL Extension Project. The number of leases that will be terminated is 78 and the number of Licenses relocated is 2. Four (4) tenants were permitted to remain on the right of way; three tenants with amended leases and one under an existing lease.
- Termination Notices have been issued to 78 Tenants which includes 26 signboards and 55 ground leases. A total of 52 businesses were to be relocated and eight remain.
- As of 2/28/10, all signboards have been removed.
- Paragon Partners continue to work with the remaining pre and post tenants.
- UP entered into a Letter Agreement agreeing to issue a right-of-entry and the easements required for construction of facilities within UP property. Agreement for right-of-entry and easements is being finalized.
- An extension was granted to the last seven (7) remaining tenants with Stipulated Judgements to remain on the right-of-way. The last tenant is expected to vacate the right of way by April 30, 2010.

**REAL ESTATE STATUS – LEASES**

	Total Leases	Total Leases to be Terminated	Received Termination Notice	Unlawful Detainer Action	Relocation Completed	Relocations Remaining	Available for Demolition	Available for Construction
Leases	82	78	78	1	44	8	44	44

## **ENVIRONMENTAL STATUS**

- Completed netting of Los Angeles River and Santa Susana Wash bridges to prevent bird nesting during the construction period.
- Enforcing actions to prevent further growth of homeless encampments and uncontrolled dumping of hazardous materials on site with Community Relations, Safety and Construction.
- Prepared the Mitigation Measures Report structure to monitor mitigation measures during construction. Completed initial responsibilities chart that will be distributed for regular updates.

## **COMMUNITY RELATIONS STATUS**

- Provided a project update to the Chatsworth Neighborhood Council.
- Managed Contractor interface with residents at the Chatsworth Mobile Home Park during preparation of privacy fence construction.
- Coordinated relocation and installation of temporary construction signs.

### **QUALITY ASSURANCE STATUS**

- The following work elements and conditions were monitored during the period:
  - Monitored demolition and moving of sheds on CMHP property.
  - Attended weekly job meetings with contractor GMX to discuss and resolve issues related to submittals, concrete mix designs and safety procedures.
  - Investigated and verified Metrolink reconstruction of track switches and cleared a path for GMX to begin fence installation.
  - Continued monitoring overall status of existing ROW for encroachments and homeless encampments.
  - Monitored the status of remaining businesses with lease terminations which are required to vacate by March 1, 2010 and those with lease extensions.

### **QUALITY ACTION REQUEST STATUS**

Project #	QAR #	Description	Due Date	Status	Comments
C0941					
C0943					



### SAFETY STATUS

- Participated in bi-weekly staff meetings to discuss safety/security related issues and construction schedule.
- Conducted security sweep with Los Angeles Sheriff's Department regarding homeless encampments.
- Reviewed and approved safety submittals such as the IIPP, JHA's and First Aid/CPR.
- The contractor reported zero work hours and no incidents for the month of February 2010.

Contractor	Project To Date										
	Work-Hours	Cases			Days Lost			Incident Rates			
		Total Cases	Total Lost Time	Retricted Duty	Current	Carry Over	Total	Total Cases	Total Lost Time	Retricted Duty	Days Lost
C0941	4,223	0.0	0.0	0.0	0.0	0.0	0.0	0.0	0.0	0.0	0.0
C0943	0	0.0	0.0	0.0	0.0	0.0	0.0	0.0	0.0	0.0	0.0
Subtotals	4,223	0.0	0.0	0.0	0.0	0.0	0.0	0.0	0.0	0.0	0.0
Metro Cons. Mgm	0	0.0	0.0	0.0	0.0	0.0	0.0	0.0	0.0	0.0	0.0
Totals	4,223	0.0	0.0	0.0	0.0	0.0	0.0	0.0	0.0	0.0	0.0

### ART DEVELOPMENT STATUS

- Held two Art Advisory Group Meetings at Canoga Park Library and Chatsworth Metrolink Depot to begin development of the Community Profile document.
- Received artist submittals and responded to inquiries about Call to Artists Requests for Qualifications.

**THIRD PARTY AGREEMENT STATUS**

Third Party	Type of Agreement	Forecast Execution Date	Required Need Date	Status/ Comments
City of Los Angeles	Amendment	12/02	N/A	Master Cooperative Agreement executed December 2002. Work Order for design review services was issued in August 2008. Special Permitting Process (SPP) was approved in July 2009. Authorization received from MTA Board in September 2009 for FY10 Work Orders. Work Order for construction services issued in November 2009.
Los Angeles County	Master	Completed	N/A	Master Cooperative Agreement executed in April 2003.
LADWP (Power)	Amendment	12/09	12/09	Work Orders for critical work issued under current MCA. Authorization received from MTA Board in June 2009 for new Work Order Agreements. Contract Work Order for design review and inspection services issued in June 2009. DWP concurred with the Letter of Understanding for the underground relocation of overhead power lines in December 2009. Work Authorization for temporary relocation signed and sent February 2, 2010.
The Gas Company	Amendment	Completed	N/A	Amendment to Master Cooperative Agreement executed in May 2005.
AT&T Long Distance (Formerly PacBell and SBC)	Amendment	Completed	N/A	Master Cooperative Agreement amendment executed in May 2005.
TCG Los Angeles, Inc.	Agreement	Completed	N/A	Amendment to Master Cooperative Agreement executed in May 2005.
AT&T California	Amendment	Completed	N/A	Amendment to Master Cooperative Agreement executed in May 2005. Work Order for design development services was issued in February 2009.
Qwest (Formerly Adelphia)	Agreement	Completed	N/A	Work Order for engineering design services was issued in February 2009. Work Order for utility relocation/protection at Chatsworth Metrolink Station site issued in April 2009. Authorization received from MTA Board in July for new Work Order Agreements. Relocation Agreement approved and signed January 28, 2010. Work Order for design/coordination services issued February 2010.

**THIRD PARTY AGREEMENT STATUS (Contd)**

L.A. County Department of Public Works/L.A. County Flood Control District	Agreement	Completed	N/A	Master Cooperative Agreement executed 1991 between SCRTD and LA County Flood Control District. Work Order for design review and permits in process.
Sprint	Amendment	Completed	N/A	Amendment to Master Cooperative Agreement executed in May 2005. Work Order for design development and preliminary engineering support services was issued in February 2009. Work Order for construction services issued in February 2010.
Verizon Wireless (Verizon Business (MCI))	Amendment	Completed	N/A	Amendment to Master Cooperative Agreement executed in May 2005. Work order issued for engineering support services issued in February 2009.
SCRRA (Metrolink)	Agreement	9/09	9/09	Work Order for design services and other support to accelerate the project authorized in January 2009. Authorization received from MTA Board in May 2009 for new Work Order Agreements. Agreement was executed for design, construction and other support services in October 2009.
UPRR	Agreement	Completed	N/A	Master Cooperative Agreement executed in June 1989. Work Order Authorized for design review services in February 2009. Processing easements for Lassen Overcrossing construction.
Level 3 Communications	Agreement	Completed	N/A	Master Cooperative Agreement executed in June 1986.
Time Warner Cable	Agreement	10/09	10/09	Amendment to Master Cooperative Agreement executed in August 2002. Agreement based on Letter of Understanding for underground relocation at Lassen Street in process.
MWD	Agreement	Completed	N/A	Cooperative Agreement for Long Beach-LA Rail System December 1986. A May 2003 letter from MTA concurs that no additional MWD amendment is required. Both agencies will review submittals upon request without charge, unless protection, relocation and/or adjustments are required.

**CONTRACT C0941 STATUS**

<p><b>North Parking Lot Chatsworth Station Contract No.: C0941</b>  <b>Contractor: Sully-Miller Contracting Co.</b></p>		<p><b>Status as of: February 26, 2010</b></p>				
<p><b>Progress/Work Completed:</b></p> <p><b>Areas of Concern:</b></p>	<p><b>Major Activities (In Progress):</b></p> <ul style="list-style-type: none"> <li>Contract close-out in progress.</li> </ul> <p><b>Major Activities Next Period:</b></p> <ul style="list-style-type: none"> <li>Contract close-out in process.</li> </ul>					
		Original Contract Dates	Time Extension	Current Contract	Forecast	Variance CDs
	Milestone 1 - Contract Completion	10/16/09	19	11/04/09	11/4/2009A	0
<p><b><u>Schedule Summary:</u></b></p> <p>Date of Award: 06/02/09</p> <p>Notice to Proceed: 06/18/09</p> <p>Original Contract Duration: 120</p> <p>Current Contract Duration: 139</p> <p>Elapsed Time from NTP: 139</p>		<p><b>Cost Summary:</b> <span style="float: right;"><b>\$ In 000's</b></span></p> <p>1. Award Value: 1,286.80</p> <p>2. Executed Modifications: 4.00</p> <p>3. Approved Change Orders: 0.00</p> <p>4. Current Contract Value (1 + 2 + 3): 1,290.80</p> <p>5. Pending Changes: 0.00</p> <p>6. Incurred Cost: 1,290.80</p>				

**CONTRACT C0943 STATUS**

<p><b>Design/Build Contract</b> <b>Contractor: Brutoco, Inc.</b></p>	<p><b>Contract No.: C0943</b> <b>Status as of: February 26, 2010</b></p>					
<p><b>Progress/Work Completed:</b> Bid evaluation completed.</p> <p><b>Areas of Concern:</b></p>	<p><b>Major Activities (In Progress):</b> - Contract Award and Notice to Proceed issued.</p> <p><b>Major Activities Next Period:</b> - Contractor mobilization in process.</p>					
		<p>Original Contract Dates</p>	<p>Time Extension</p>	<p>Current Contract</p>	<p>Forecast</p>	<p>Variance CDs</p>
	<p>Milestone 1 - Contract Substantial Completion</p>	<p>03/01/12</p>	<p>0</p>	<p>03/01/12</p>	<p>03/01/12</p>	
	<p>Milestone 2 - Complete Universal Fare System Requirements</p>	<p>11/02/11</p>	<p>0</p>	<p>11/02/11</p>	<p>11/02/11</p>	
	<p>Milestone 3 - Elect/Communication Requirements Complete</p>	<p>01/31/12</p>	<p>0</p>	<p>01/31/12</p>	<p>01/31/12</p>	
	<p>Milestone 4 - Passenger Information System Testing Complete</p>	<p>04/01/12</p>	<p>0</p>	<p>04/01/12</p>	<p>04/01/12</p>	
	<p>Milestone 5 - Complete</p>	<p>04/02/13</p>	<p>0</p>	<p>04/02/13</p>	<p>04/02/13</p>	
	<p>Milestone 6 - Landscape and Planting Maintenance and Warranty</p>	<p>03/02/14</p>	<p>0</p>	<p>03/02/14</p>	<p>03/02/14</p>	
	<p>Milestone 7 - Complete DWP Powerline Overhead/Underground at Lassen Street</p>	<p>05/31/10</p>	<p>0</p>	<p>05/31/10</p>	<p>05/31/10</p>	
<p><b><u>Schedule Summary:</u></b></p> <p>Date of Award: 02/10/10</p> <p>Notice to Proceed: 03/01/10</p> <p>Original Contract Duration: 730</p> <p>Current Contract Duration: 730</p> <p>Elapsed Time from NTP: 0</p>	<p><b>Cost Summary:</b> <span style="float: right;"><b>\$ In 000's</b></span></p> <p>1. Award Value: 82.49</p> <p>2. Executed Modifications: 0.00</p> <p>3. Approved Change Orders: 0.00</p> <p>4. Current Contract Value (1 + 2 + 3): 82.49</p> <p>5. Pending Changes: 0.00</p> <p>6. Incurred Cost: 0.00</p>					

## **CHRONOLOGY OF EVENTS**

1990	MTA purchased abandoned railroad right-of-way.
April 1, 2003	Regionally Significant Transportation Investment Study (RSTIS) completed and approved by MTA Board.
September 28, 2006	MTA Board authorized the Chief Executive Officer to begin environmental clearance and Preliminary Engineering for a northern extension of the Metro Orange Line along the MTA-owned Canoga Avenue rail right-of-way to the Chatsworth Metrolink Station.
November 7, 2006	MTA issues RFP No. PS43701952 for Northern/Canoga Extension of the Metro Orange Line to solicit Contractor to environmentally clear and complete the Preliminary Engineering with Options for Design Development (Phase 3) and Engineering Support Services During Construction (Phase 4).
March 22, 2007	MTA Board approves Item No. 35 for staff to negotiate and execute a professional services contract with Iteris Inc. to environmentally clear and complete the preliminary engineering phase.
April 25, 2007	Limited Notice to Proceed issued to Iteris Inc authorizing Phase A - DEIR, Phase B – FEIR, Phase 1 Conceptual Engineering and Phase 2 Preliminary Engineering (18 month duration).
June 26, 2008	MTA Board selects Locally Preferred Alternative and receives Draft Environmental Impact Report.
July 17, 2008	Limited Notice to Proceed Issued to Iteris for PE bridge element only Scope of Work.
August 12, 2008	Commence Preliminary Engineering. Full Notice to Proceed Issued to Iteris.
January 22, 2009	MTA Board Certifies Final EIR, Adopts Project, approves Design-Build contracting approach, and approves engineering services by Iteris, Inc.
January 23, 2009	Issue Limited Notice to Proceed to Iteris Inc. Authorizing Design Development (Phase 3), Selected Final Design and Engineering Support Services During Construction (Phase 4).
March 13, 2009	Advertised Contract C0941 North Parking Lot (Chatsworth Station).

## **CHRONOLOGY OF EVENTS**

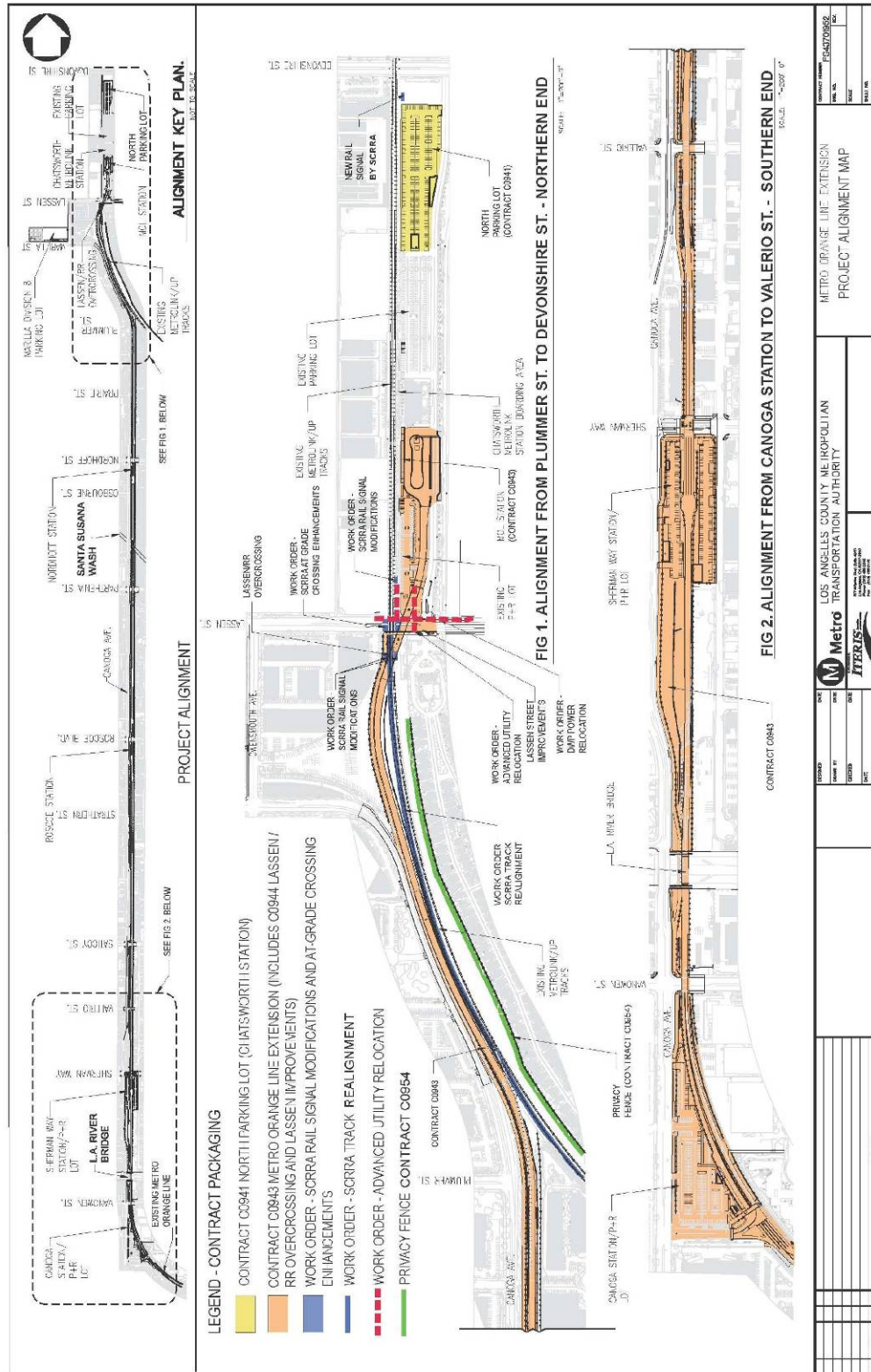
March 25, 2009	Submitted application to CPUC for MOL Extension grade separated two lane crossing above and across the railroad tracks near Lassen Street in Chatsworth.
April 6, 2009	First commencement of work at North Parking Lot (Chatsworth Station) was advance utility protection by third party utility company Qwest.
April 10, 2009	Executed Contract Work Order 1.00 to Stantec consulting, Inc for Construction Management Support Services for the MOL Extension. MTA Board awarded Contract MC069 to Stantec Consulting, Inc on February 25, 2009.
April 13, 2009	Received seven bids for Contract C0941 North Parking Lot (Chatsworth Station).
May 7, 2009	Received for second time, bids for Contract C0941 North Parking Lot due to non-responsive bids received on April 13, 2009.
June 2, 2009 and June 18, 2009	Awarded Contract C0941 North Parking Lot (Chatsworth Station) and issued notice-to-proceed to Sully-Miller Contracting Company.
June 12, 2009	Advertised Contract C0943 Design-Build.
June 24, 2009	Held MOL Extension Project ground breaking ceremony at North Parking Lot site near Chatsworth Metrolink Station.
July 1, 2009	Conducted Contract C0943 pre-bid meeting.
July 27, 2009	SCRRA ordered long lead signal equipment.
October 15, 2009	Received four bids for Contract C0943 Design-Build.
October 21, 2009	Received eight bids for Contract C0954, Chatsworth Mobile Home Park Privacy Fence.
October 29, 2009	SCRRA executed Work Order Agreement with MTA for their railroad scope of work related to Lassen Street / RR Overcrossing.
November 4, 2009	Completed and opened the North Parking Lot (Chatsworth Station).

## **CHRONOLOGY OF EVENTS**

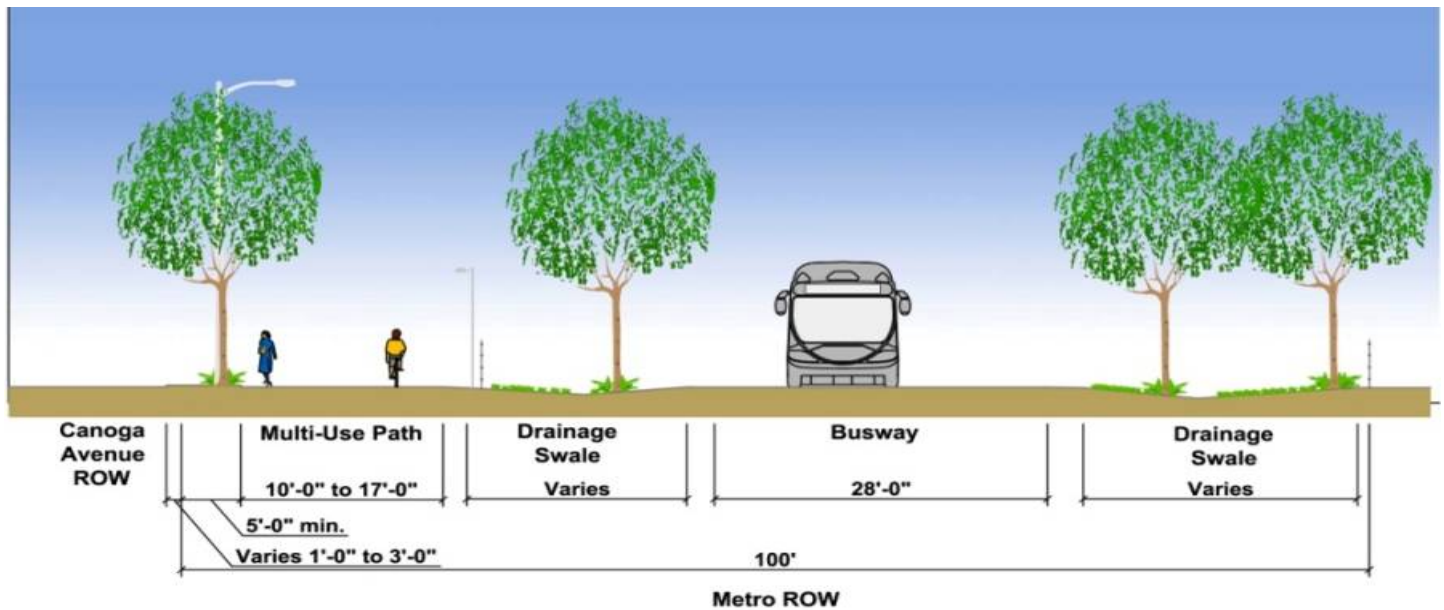
November 19, 2009	Letter of Understanding requesting concurrence for the underground relocation of overhead power lines sent to LADWP and Time Warner Communication.
November 23, 2009	Notice of Award to GMX Construction, Inc., for Contract No. C0954 Chatsworth Mobile Home Privacy Fence.
November 25, 2009	Received authorization from State of California Public Utilities Commission, General Order 88, to improve and modify Lassen Street At-Grade Highway-Rail Crossing.
November 30, 2009	Received from Union Pacific, letter agreement regarding right-of entry and easements required for construction within Union Pacific property.
December 6, 2009	SCRRA completed trackwork at Lassen Street rail crossing.
December 16, 2009	DWP concurred with Letter of Understanding for underground relocation work at Lassen Street.
January 5, 2010	Notice to proceed to GMX Construction, Inc., for Contract No. C0954 Chatsworth Mobile Home Privacy Fence.
January 13, 2010	CTC approved a request to use \$14.7 million in Measure R Transit Capital 35% funds for a Proposition 1B Letter of No Prejudice arrangement in lieu of FY2010 SLPP funds.
January 19, 2010	SCRRA completed realignment of approx. 3,300 feet of existing active track.
February 10, 2010	Issued Notice of Award to Brutoco Engineering & Construction, Inc. for Contract No. C0943 Design- Build.
February 26, 2010	Issued Notice-to-Proceed to Brutoco, effective March 1, 2010.



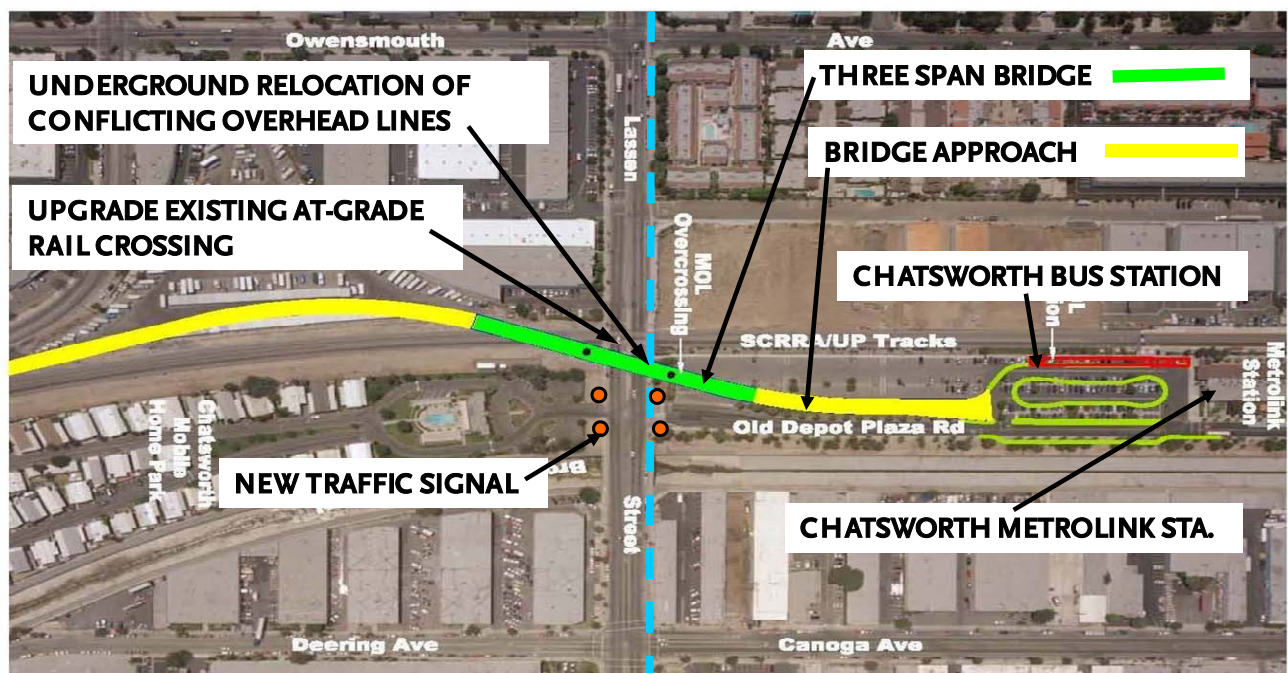
**ALIGNMENT ILLUSTRATIONS**



## ALIGNMENT ILLUSTRATIONS (Cont'd)



Duplicating features of operating Metro Orange Line.



Lassen Street /Railroad Overcrossing location.

**ALIGNMENT ILLUSTRATIONS (Cont'd)**



Current view Chatsworth Station.



Proposed view Chatsworth Station.

## **CONSTRUCTION PHOTOGRAPHS**



SCRRRA replaced track at Lassen rail crossing.



SCRRRA replaced 3,300' of tracks between Lassen Street and Brown's Creek in advance of start of construction.

## **APPENDIX COST AND BUDGET TERMINOLOGY**

**COMMITMENTS:** The total of actual contract awards, executed change orders or amendments, approved work orders of Master Cooperative Agreements, offers accepted for purchase of real estate, and other Metro actions which have been spent or result in the obligation of specific expenditures at a future time.

**CONSTRUCTION:** Costs associated with Guideways, Stations, Support Facilities, Sitework/Special Conditions and Systems.

**CONTINGENCY:** A fund established at the beginning of a project to provide for anticipated but unknown additional costs that may arise during the course of the project.

**CURRENT BUDGET:** The Original Budget plus all budget amendments approved by formal Metro action. Also referred to as Approved Budget.

**CURRENT FORECAST:** Evaluation of costs to go combined with actual expenditures.

**EXPENDITURES:** The total dollar amount of funds expended by Metro for contractor or consultant invoices, third party invoices, staff salaries, real estate and other expenses that is reported in Metro's Financial Information System (FIS).

**ORIGINAL BUDGET:** The Original Project Budget as established by Metro Board of Directors at the time it authorizes Construction Project Management Division to commence full design and construction of the project (Project Adoption).

**PROFESSIONAL SERVICES:** Costs associated with General Engineering, Project Management Assistance, Construction Management Support services, Legal Counsel, Agency (Metro Staff) costs, and other Specialty Consultants.

**RIGHT-OF-WAY:** Includes purchase cost of parcels, easements, right-of-entry permits, escrow fees, and tenant relocation.

**VEHICLES:** Costs associated with the purchase of buses for project.

**APPENDIX  
LIST OF ACRONYMS**

CADD	Computer Aided Drafting and Design
CALTRANS	California Department of Transportation
CD	Calendar Day
CDFG	California Department of Fish and Game
CM	Construction Manager
CMAC	Congestion Mitigation Air Quality
CN	Change Notice
CO	Change Order
COE	Corps of Engineers
CPM	Critical Path Method
CPUC	California Public Utilities Commission
CR	Camera Ready
CTC	California Transportation Commission
CUD	Contract Unit Description
D-B	Design-Build
D-B-B	Design-Bid-Build
DD	Design Development
DEIR	Draft Environmental Impact Report
DWP	Department of Water and Power
EIR	Environmental Impact Report
EIS	Environmental Impact Statement
FD	Final Design
FEIR	Final Environmental Impact Report
FIS	Financial Information System
FOCT	Fiber Optics Cable Transmission System
FTE	Full Time Equivalent
GDSR	Geotechnical Design Summary Report
IFB	Invitation for Bid
IPO	Integrated Project Office
JV	Joint Venture
LA	Los Angeles
LABOE	Los Angeles Bureau of Engineering
LACFCD	Los Angeles County Flood Control District
LADOT	Los Angeles Department of Transportation
LADPW	Los Angeles Department of Public Works
LADWP	Los Angeles Department of Water and Power
LFAT	Local Field Acceptance Test
LNTP	Limited Notice To Proceed
LONP	Letter Of No Prejudice
LRTP	Long Range Transportation Plan
METRO	Los Angeles County Metropolitan Transportation Authority
MIS	Major Investment Study

**APPENDIX  
LIST OF ACRONYMS (Continued)**

MOL	Metro Orange Line
MOL EXT	Metro Orange Line Extension
MPSR	Monthly Project Status Report
N/A	Not Applicable
NTE	Not to Exceed
NTP	Notice To Proceed
OCIP	Owner-Controlled Insurance Program
P6	Primavera Project Planner® (scheduling software)
PC	Project Control
PE	Preliminary Engineering
PIP	Project Implementation Plan
PM	Project Manager
PMA	Project Management Assistance
PMP	Project Management Plan
P&P	Policies & Procedures
PR	Project Report
PSR	Project Study Report
QA	Quality Assurance
QAR	Quality Assurance Report
QC	Quality Control
QPSR	Quarterly Project Status Report
RFC	Request For Change
RFP	Request For Proposal
ROD	Revenue Operations Date
ROM	Rough Order of Magnitude
ROW	Right-Of-Way
RR	Railroad
RWQCB	Regional Water Quality Control Board
SCE	Southern California Edison
SCRRA	Southern California Regional Rail Authority (Metrolink)
SFV	San Fernando Valley
SIT	System Integration Testing
SOV	Schedule Of Value
SOW	Statement Of Work
SP	Special Provision
TBD	To Be Determined
UFS	Universal Fare System
VE	Value Engineering
WBS	Work Breakdown Structure
WP	Work Package