



# Metro Orange Line Extension

## QUARTERLY PROJECT STATUS REPORT



Metro®

10-1265CMC ©2010 LACMTA

## TABLE OF CONTENTS

	Page No.
Project Overview.....	1-2
Management Issues.....	2
Project Status	
• Project Scope.....	3
• Schedule	
○ Key Milestones Six-Month Look Ahead .....	4
○ Schedule Narrative .....	4
○ Summary Schedule.....	5
• Project Cost Status and Analysis.....	6
• Financial/Grant Status.....	7
• Staffing.....	8-10
• Real Estate.....	11
• Quality Assurance.....	11
• Environmental.....	12
• Community Relations.....	12
• Art Development.....	12
• Safety.....	13
• Third Party.....	13
• Contract C0943 Status.....	14
Chronology of Events.....	15

## **PROJECT OVERVIEW**

*The Metro Orange Line (MOL) Extension Project is a four-mile extension of the Metro Orange Line extending from the Canoga park-and-ride lot to the Chatsworth Metrolink Station. The Project includes: busway, new station platforms at the Canoga park-and-ride lot, new stations at Sherman Way (with park-and-ride), Roscoe Boulevard, Nordhoff Street, and the Chatsworth Metrolink Station (with park-and-ride); grade-separation structure over active railroad tracks and Lassen Street (Lassen bridge) providing direct access into the Chatsworth Metrolink Station; Los Angeles River and Santa Susana Wash bridge crossings; and satellite bus parking facility. The project also includes street improvements, bicycle/pedestrian path, systems equipment and landscaping similar to the MOL.*

With the MTA Board adoption of the MOL Extension Project in January 2009, the Board directed staff to accelerate the completion of the Project to summer 2012.

### Major Accomplishments:

- Constructed the north parking lot at Chatsworth station,
- Completed final design and obtained approvals of Lassen bridge,
- Relocated tracks and completed new rail signals (by Metrolink),
- Completed all real estate relocations and acquired easements from UP,
- Constructed the Privacy Fence at Chatsworth Mobile Home Park (CMHP), and
- Removed known hazardous materials and demolished vacant structures.

The design builder, Brutoco Engineering & Construction, Inc, started on March 1, 2010 and is responsible for the construction of the Lassen bridge and Lassen Street improvements as well as for the design and construction of the remaining Project scope of work. The design builder has started:

- Construction of the underground utility work on Lassen Street,
- Abutment No. 1 of Lassen bridge,
- Phase 2 soil testing and potholing of utilities,
- Final design of the busway street crossings, bikeway, stations and remaining bridges.

### Other Project specific items required for revenue operations includes:

- Purchase and install fare collection equipment - issued a change notice (Contract Modification pending) in June 2010 to Cubic Transportation Systems, Inc.,
- Station Artwork – selected artists for station artwork , and
- Vehicles – complete a midlife overhaul of existing Orange Line buses and add buses to the fleet in time for a summer of 2012 opening.

To date, commitments are \$110.4 million or 51.2% of the Original Budget. Expenditures are \$29.2 million or 13.5% of the \$215.6 million Original Budget.

Design-builder's final design percent complete is 65.7% and construction physical percent complete is 3.5%.

## **MANAGEMENT ISSUES**

**Concern No. 1:** Underground work on Lassen Street and abutment foundation work for Lassen bridge is delayed due to differing site conditions, Metrolink approvals and design builder's quality control issues.

**Status/Action** MTA has issued design changes to mitigate differing site conditions. Metrolink to issue permit to LADWP and Time Warner for relocation of overhead lines. Design builder is addressing the quality issues relating to the bridge.

**PROJECT SCOPE**



**C0943: Metro Orange Line Extension (MOL Ext)** is a design-build contract to construct the majority of the Project scope of work. This contract will include design and construction of busway, new stations at Sherman Way (with park-and-ride), Roscoe Boulevard, Nordhoff Street, and Chatsworth Metrolink Station (with park-and-ride). The existing MOL Canoga park-and-ride lot will be modified with new station platforms. In addition, the contractor will design and construct approaches to the Lassen bridge, a bridge over the Los Angeles River, a smaller bridge over the Santa Susana Wash, street improvements, bicycle/pedestrian path, satellite bus parking facility, landscaping, systems equipment, and system integration and testing. In August 2009, the Lassen bridge (500' long 3-span bridge over active railroad tracks/Lassen Street) and Lassen Street Improvements were added to Contract C0943.





**C0941: North Parking Lot (Chatsworth Station)** is a construction contract for a new parking lot to be constructed north of the existing Chatsworth Metrolink Station. Completion of this lot is required before the south parking lot is modified to ensure that parking is continuously available for Metrolink patrons during construction of the MOL Extension.

**Work Order – Advance Metrolink Rail Signal Modifications, Track Realignment, and At-Grade Lassen Crossing Enhancements** is to be substantially completed by Metrolink in advance of the Design-Build Contractor commencing construction of portions of the Lassen bridge.

**Work Order - Advance Relocation of power, fiber optic and communication lines on Lassen Street** is to be completed by LADWP and the affected utility companies prior to the Design-Build Contractor commencing construction of portions of the Lassen bridge.

**KEY MILESTONE SCHEDULE SIX-MONTH LOOK AHEAD**

	Milestone Date	Sep-10	Oct-10	Nov-10	Dec-10	Jan-11	Feb-11
<b>DESIGN of C0943</b>							
Issue Approved For Construction Design Unit 4	12/14/10				■		
Issue Approved For Construction Design Unit 5	1/11/11					■	
Issue Approved For Construction Design Unit 1	1/24/11					■	
<b>CONSTRUCTION of C0943</b>							
Commence Lassen Bridge Abutment 1	9/24/10 A	■					
Option C - Complete Underground Conduit System on Lassen Street	10/1/10		■				
LADWP to commence Underground Relocation of Power Lines on Lassen Street	10/7/10*		△				
Commence Removal of contaminated soils	10/29/10*		■				
Demo Existing L.A. River and Santa Susana Bridge Portion	10/6/10*		■				
Commence Lassen Bridge Bent 2 and 3	11/4/10*			■			
Commence Rough Grade at north end of Orange Line Ext.	1/3/11					■	
Commence Lassen Bridge Falsework	2/8/11*						■

 MTA Staff    
  MTA Board Action    
 "A" following date is actual and completed  
 Other Agencies    
 Design Builder    
 \* New Date

**SCHEDULE NARRATIVE**

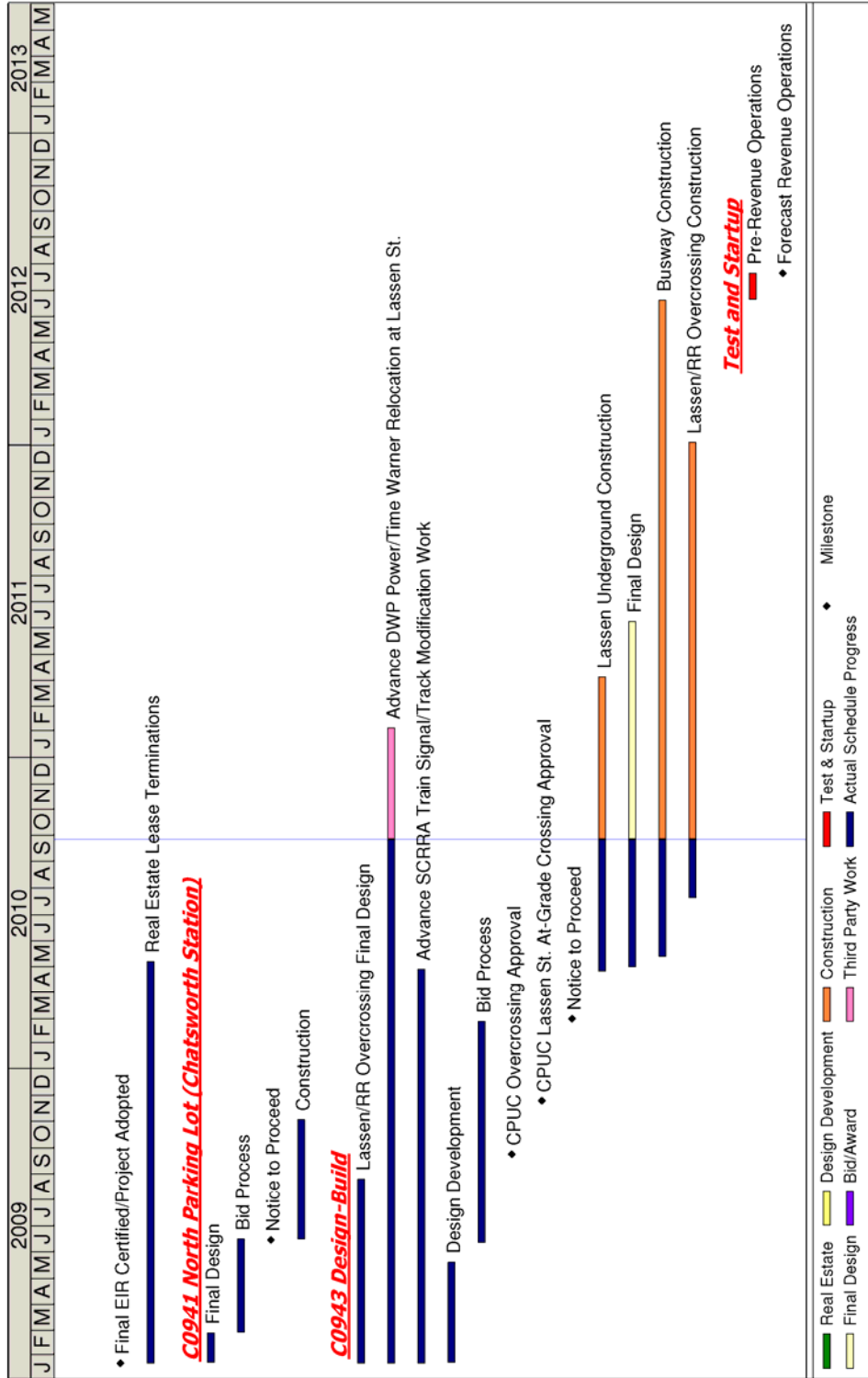
**Project Status:**

The design builder has created segment design packages and is developing the final designs. During September, the design builder completed 60% Design Unit Packages 2 and 5. Design builder continues in October with the design submittals of 85% Design Units 1 thru 5.

**Critical Path:**

Based upon the contractor's latest baseline schedule update the critical path begins with the Lassen street underground conduit relocation and underground relocation of power lines. Subsequently the critical path continues with the design of the Prairie intersection and the construction of these intersections at Prairie, Nordhoff, Valerio, and Van Owen. The critical path concludes with system wide acceptance testing, pre-revenue operations, and the start of revenue operation.

**SUMMARY SCHEDULE**



**PROJECT COST STATUS - 800119**

**COST REPORT BY ELEMENT**

UNITS IN MILLIONS

ELE- MENT	DESCRIPTION	ORIGINAL BUDGET	CURRENT BUDGET		COMMITMENTS		EXPENDITURES		CURRENT FORECAST		FORECAST VARIANCE
			PERIOD	TO DATE	PERIOD	TO DATE	PERIOD	TO DATE	PERIOD	TO DATE	
C	CONSTRUCTION	137.3	-	137.3	0.4	85.5	2.8	16.5	-	119.6	(17.7)
R	RIGHT-OF-WAY	8.0	-	8.0	-	4.2	-	1.7	-	5.0	(3.0)
V	VEHICLES / BUSES	9.9	-	9.9	-	-	-	-	-	9.9	-
P	PROFESSIONAL SERVICES	38.7	-	38.7	(1.4)	20.7	1.4	11.0	-	33.8	(4.9)
PC	PROJECT CONTINGENCY	21.7	-	21.7	-	-	-	-	-	18.7	(3.0)
PB	PROJECT RESERVE	-	-	-	-	-	-	-	-	28.6	28.6
PR	PROJECT REVENUE	-	-	-	-	-	-	-	-	-	-
<b>TOTAL</b>		<b>215.6</b>	<b>-</b>	<b>215.6</b>	<b>(1.0)</b>	<b>110.4</b>	<b>4.2</b>	<b>29.2</b>	<b>-</b>	<b>215.6</b>	<b>-</b>

NOTE: EXPENDITURES ARE CUMULATIVE THROUGH AUGUST 2010.

**PROJECT COST ANALYSIS**

**Original Budget and Current Budget:**

The Life of Project Budget for the Metro Orange Line Extension Project was adopted in January 2009 for a value of \$215.6 million.

**Current Forecast:**

The total project forecast remains the same at \$215.6 million.

**Commitments:**

The commitments decreased \$1.0 million this period. In the Construction element there was an increase of \$0.4 million for executed contract modifications associated with the Design-Build Contract C0943. In the Professional Services element there was a decrease of \$1.4 million due to the reduction of the total contract value for the Construction Management Support Services Contract MC069. The \$110.4 million in commitments to date represents 51.2% of the Original Budget.

**Expenditures:**

The expenditures are cumulative through August 2010. The expenditures increased by \$4.2 million this period. In the Construction element there was an increase of \$2.8 million primarily for costs associated with the Design-Build Contract C0943, environmental consultants, Metrolink support and third party scope of work. In the Professional Services element there was an increase of \$1.4 million for costs associated with design engineering consultant, construction management support, specialty services, and MTA project administration. The \$29.2 million in expenditures to date represents 13.5% of the current budget.



**FINANCIAL/GRANT STATUS**

**Project 800119 – Metro Orange Line Extension**

**SEPTEMBER 2010**

**STATUS OF FUNDS BY SOURCE**

\$ in millions

SOURCE	(A)	(B)	(C)	(D)	(D/B)	(E)	(E/B)	(F)	(F/B)
	ORIGINAL	TOTAL	TOTAL	COMMITMENTS		EXPENDITURES		BILLED to FUNDING	SOURCE
	BUDGET	FUNDS	FUNDS	\$	%	\$	%	\$	%
	(1)	ANTICIPATED	AVAILABLE						
	(2)								
PROP 1B FUNDS-PTMISEA*	68.0	68.0	40.5	68.0	100%	29.2	43%	24.7	36%
PROP 1B FUNDS-SLTPP**	73.8	73.8		42.4	57%		0%		0%
PROP C 25%	73.8	73.8			0%		0%		0%
<b>TOTAL</b>	<b>215.6</b>	<b>215.6</b>	<b>40.5</b>	<b>110.4</b>	<b>51%</b>	<b>29.2</b>	<b>14%</b>	<b>24.7</b>	<b>11%</b>

(1) Based on January 2009 MTA Board adoption of Life of Project Budget.

(2) Based on March 2009 Capital Programming Revised Financial Plan.

\* PTMISEA: Public Transportation Modernization and Improvement Surface Enhancement Account

\*\* SLTPP: State - Local Transportation Partnership Program

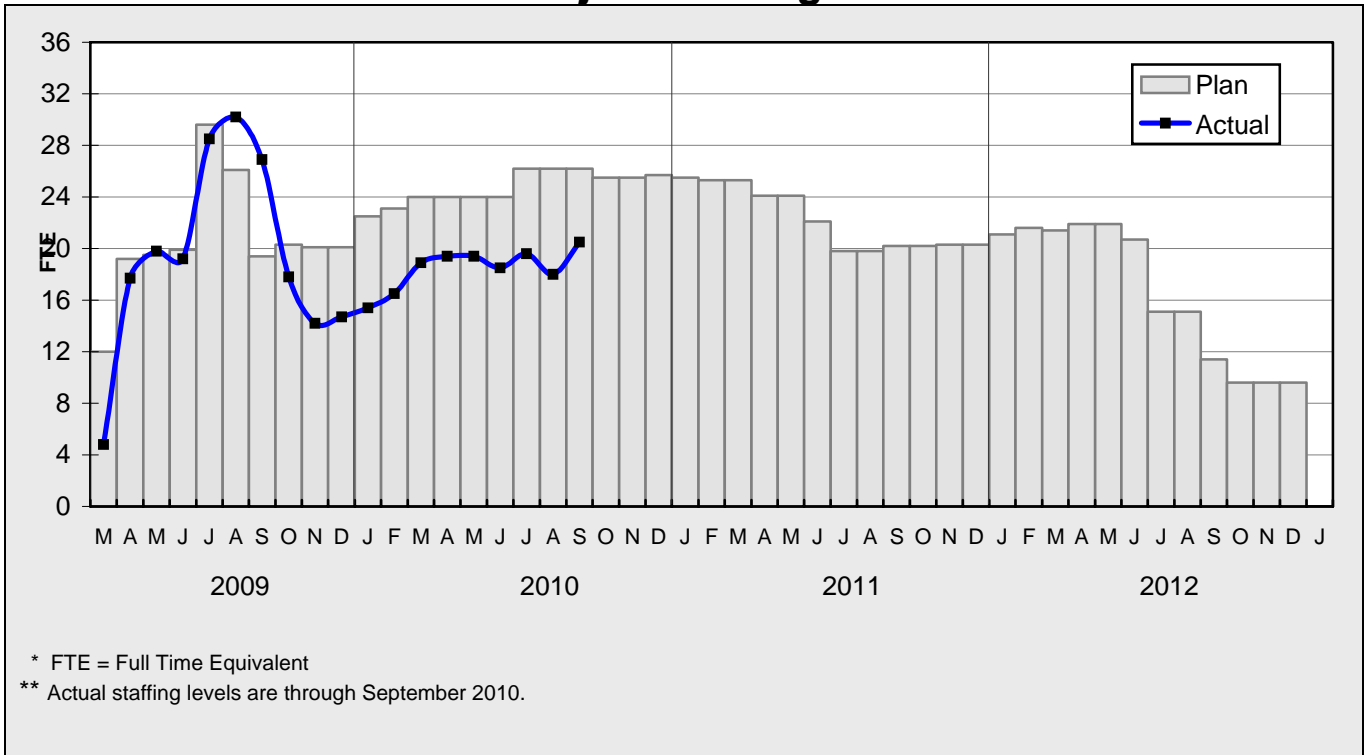
NOTE: Expenditures are cumulative through August 2010.

**STATUS OF FUNDS ANTICIPATED**

**STATE PROP 1B – PTMISEA:** MTA submitted a state application for \$8.9 million in September 2008. The State approved the \$8.9 million application in March 2009. Funds were received in July 2009 and are available for drawdown. MTA submitted a request to Caltrans to allocate \$31.6 million of FY09 funds to the project. The allocation was approved in November 2009 and funds have been received. MTA submitted a request to Caltrans to allocate \$29.5 million of FY10 funds to the Project. The allocation was expected to be approved in September 2010. However, due to the delay in approving the State Budget, this allocation request has not been approved and approval is now expected in November 2010.

**STATE PROP 1B – SLTPP:** MTA requested an allocation of \$14.7 million in SLPP funds at the December 2009 CTC Meeting and the allocation was not approved. At the January 2010 CTC Meeting, the CTC approved a request to use \$14.7 million in Measure R Transit Capital 35% funds for a Proposition 1B Letter of No Prejudice arrangement in lieu of the FY 2010 SLTPP funds. Based on the passage of AB672, MTA will use the substitute funding and will seek reimbursement from the state in the future. The CTC will again review the allocation request at their November 2010 Meeting. MTA submitted to the CTC an allocation request for \$34.1 million in SLTPP funds in May 2010. The CTC will review the allocation request at their November 2010 Meeting. No approval is expected until the State Budget is approved.

**STAFFING STATUS  
Total Project Staffing - FTES**



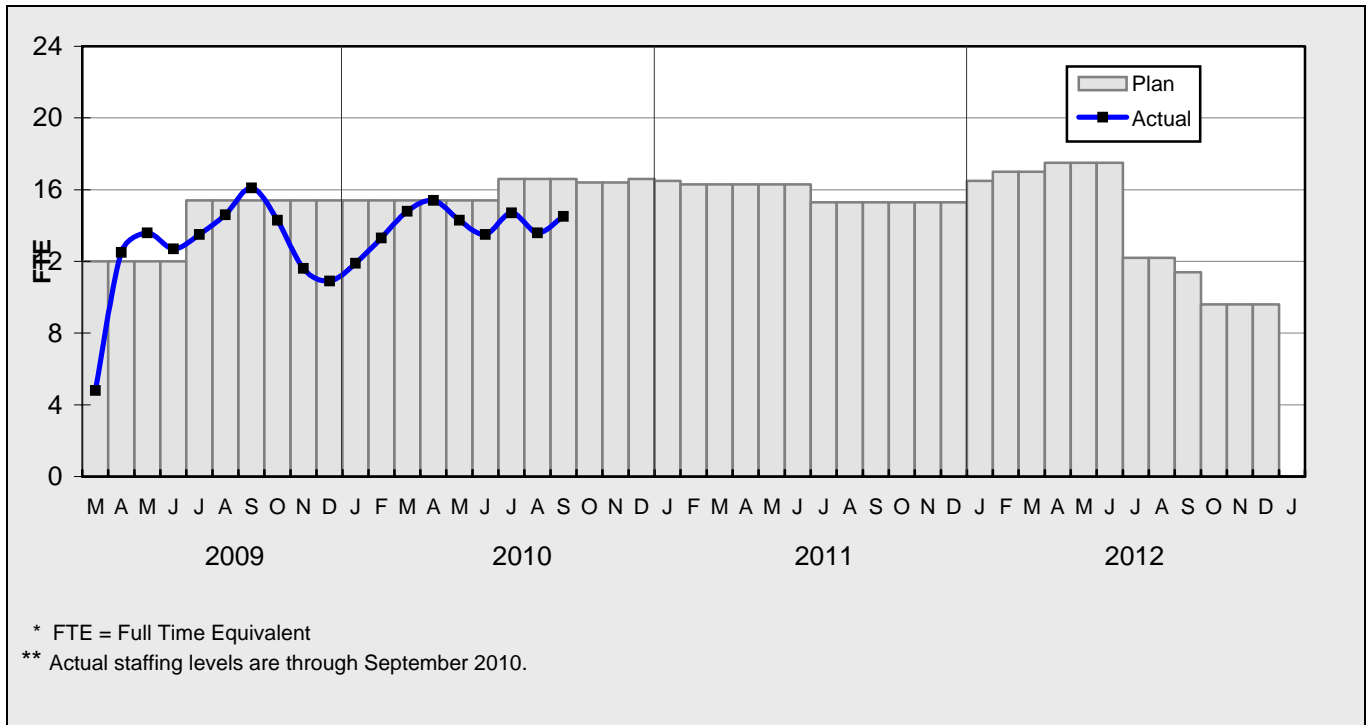
**Total Project Staffing**

The overall FY11 Total Project Staffing plan averages 25.1 FTE's per month.

For September 2010, there were a total of 14.5 FTE's for MTA's Project Administration staff and 6.0 FTE's for consulting staff. The total project staffing was 20.5 FTE's for September 2010.

## STAFFING STATUS

### MTA STAFFING - FTES

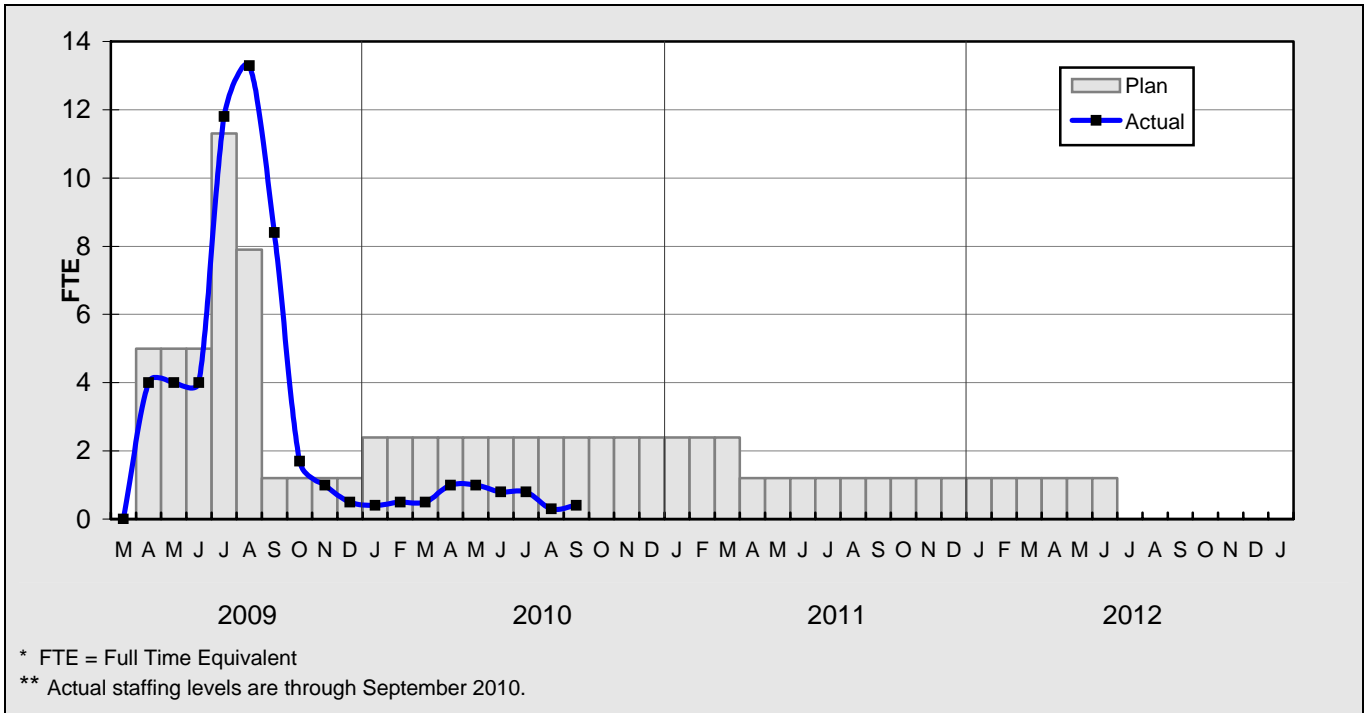


### CONSTRUCTION MANAGEMENT SUPPORT SERVICES CONSULTANT - FTES



## STAFFING STATUS

### ENGINEERING SERVICES CONSULTANT



**REAL ESTATE STATUS**

- The Street Easement over the UPRR property has been signed by the City of Los Angeles and will be recorded soon.
- UPRR sent the license to LADWP for underground utilities across UPRR property on August 25, 2010 for approval. The License is being routed for City staff approval.
- MTA license with Time Warner to install underground utilities across MTA property has been completed.
- MTA sent license to LADWP for the installation of underground utilities across MTA property. The License is being routed for City staff approval.

**LEASES**

- All Real Estate work required to clear the ROW is completed.

	Total Leases	Total Leases to be Terminated	Total Leases to Remain with Modified Lease	Leases to Remain Under Existing Lease	Relocations Completed	Total Signboards Removed
Leases	82	78	3	1	52	26

**QUALITY ASSURANCE STATUS**

- Attended weekly job and readiness review meetings with Brutoco.
- Monitored underground conduits installation on Lassen Street and other construction work along the alignment.

## **ENVIRONMENTAL STATUS**

- Coordinated Stormwater Pollution Prevention Plan documents for submittal to the State Water Resources Control Board.
- Completed removal of hazardous soils at locations along the alignment.
- Completed soil sampling activities to determine: 1) additional impacted locations and 2) chemical profile for disposal.
- Continued air sampling activities to monitor air quality during construction activities.

## **COMMUNITY RELATIONS STATUS**

- Hosted a community-wide Project Briefing and Construction Update.
- Presented Project Briefing and Construction Update to the Chatsworth Women's Club.
- Coordinated meeting between design builder and park managers of Eton Mobile Home Park and Riviera Mobile Home Park regarding inventory list of residents impacted with upcoming construction of their privacy walls.
- Coordinated meeting with business owner regarding tree replacement plan on Eton Avenue.
- Continued access coordination to businesses for pre-construction survey photos and video along the Right-Of-Way.
- Disseminated 2 construction notices:
  1. Excavation of boring pits on Lassen Street; and
  2. Traffic reconfiguration on Lassen Street.

## **ART DEVELOPMENT STATUS**

- Conducted art tour of existing Metro Orange Line for Supervisor Antonovich's staff.
- Metro Procurement is developing contracts for the selected station artists.

**SAFETY STATUS**

**CO943:**

- Participated in weekly Tool-Box Safety Meeting, progress meetings with Construction Management and Metrolink Safety Training.
- Monitored construction activities on a daily basis to ensure safety compliance with contract specifications.
- Issued Stop Work Notice (SWN) #2 for inadequate Job Hazard Analysis (JHA) for jack and boring operation. Contractor revised and resubmitted JHA and work operations resumed.
- Brutoco and their subcontractors reported zero incidents and 14,708 work hours for the month of September 2010. Total project to date work hours are 39,654 and the incident rate is zero.

**THIRD PARTY AGREEMENT STATUS**

<b>Third Party</b>	<b>Type of Agreement</b>	<b>Forecast Execution Date</b>	<b>Required Need Date</b>	<b>Status/ Comments</b>
City of Los Angeles	Licensing Agreement	12/10	N/A	Licensing agreement has been agreed upon by LADOT. The agreement is on hold pending City concurrence with exhibits due to City maintenance funding issues.
City of Los Angeles	O & M Agreement	12/10	N/A	The O&M agreement for the Chatsworth Metrolink Station site has been reviewed by MTA and transmitted to the City for their review.

**Note: For a list of all Third Party Agreements, that have been executed, please see the May 2010 Monthly Project Status Report.**

**CONTRACT C0943 STATUS**

<p><b>Design/Build Contract</b> <b>Contractor: Brutoco, Engineering and Construction, Inc.</b></p>	<p><b>Contract No.: C0943</b> <b>Status as of: October 1, 2010</b></p>					
<p><b>Progress/Work Completed:</b></p> <ul style="list-style-type: none"> <li>- Submitted 85% design of Design Unit 1, busway/bikeway segments 7 - 9.</li> <li>- Submitted 60% design of Design Unit 2, busway segments.</li> <li>- Submitted design of 85% Design Unit 3 for Canoga and Chatsworth stations.</li> <li>- Submitted 85% design of Design Unit 4, Roscoe, Parthenia, and Nordhoff Intersections.</li> <li>- Submitted 60% design of Design Unit 5, Vanowen, Sherman Way, Valerio and Saticoy.</li> <li>- Completed Phase 1 hazardous soil removal.</li> </ul> <p><b>Areas of Concern:</b></p> <ul style="list-style-type: none"> <li>- The start of the abutment foundations of Abutment No. 1 and 4 of the Lassen St. Bridge are being impacted due to differing site conditions.</li> </ul> <p>-Potential Design change at the Sherman Way station and right turn pockets may impact design completion.</p> <p>-Contractor's schedule update indicates potential delays in achieving future milestones. However, contractor has presented potential mitigation opportunities such as full street closures at the intersections, early bent construction and early power pole relocation design. Anticipate all schedule variances (shown at right) can be mitigated in the near future.</p>	<p><b>Major Activities (In Progress):</b></p> <ul style="list-style-type: none"> <li>- Underground conduit installation on Lassen Street.</li> <li>- Pile installation for Abutment No. 1 of Lassen St. bridge.</li> <li>- Phase II soil testing and potholing of utilities.</li> <li>- Busway street crossings, bikeway, stations and remaining bridges design.</li> </ul> <p><b>Major Activities Next Period:</b></p> <ul style="list-style-type: none"> <li>- Begin demolition of L.A. River and Santa Susana Bridge .</li> <li>- Tie-in Conduits &amp; vaults at Lassen St. underground relocation of power lines.</li> <li>- Commence pile installation for Abutment No. 4 of Lassen St. bridge.</li> <li>- Begin removal of non-hazardous contaminated soils.</li> </ul>					
		Original Contract Dates	Time Extension	Current Contract	Forecast	Variance CDs
	Milestone 1 - Contract Substantial Completion	02/29/12	0	02/29/12	05/25/12	-86
	Milestone 2 - Complete Universal Fare System Requirements	07/18/11	0	07/18/11	10/04/11	-78
	Milestone 3 - Elect/Communication Requirements Complete	12/13/11	0	12/13/11	02/06/12	-55
	Milestone 4 - Passenger Information System Testing Complete	01/26/12	0	01/26/12	03/19/12	-53
	Milestone 5 - Complete	02/07/13	0	02/07/13	04/01/13	-53
	Milestone 6 - Landscape and Planting Maintenance and Warranty	02/28/14	0	02/28/14	02/28/14	0
	Option C - Complete DWP Powerline Overhead at Lassen Street	05/28/10	0	05/28/10	10/01/10	-126
<p><b>Schedule Summary:</b></p> <p>Date of Award: 02/10/10</p> <p>Notice to Proceed: 03/01/10</p> <p>Original Substantial Completion Duration: 730</p> <p>Current Substantial Completion Duration: 730</p> <p>Elapsed Time from NTP: 209</p>	<p><b>Cost Summary: \$ In 000's</b></p> <p>1. Award Value: 82.49</p> <p>2. Executed Modifications: 0.18</p> <p>3. Approved Change Orders: 0.24</p> <p>4. Current Contract Value (1 + 2 + 3): 82.91</p> <p>5. Incurred Cost: 17.90</p>					



## **CHRONOLOGY OF EVENTS**

January 5, 2010	Notice to proceed to GMX Construction, Inc., for Contract No. C0954 Chatsworth Mobile Home Privacy Fence.
January 13, 2010	CTC approved a request to use \$14.7 million in Measure R Transit Capital 35% funds for a Proposition 1B Letter of No Prejudice arrangement in lieu of FY2010 SLPP funds.
January 19, 2010	Metrolink completed realignment of approx. 3,300 feet of existing active track.
February 10, 2010	Issued Notice of Award to Brutoco Engineering & Construction, Inc. for Contract No. C0943 Design- Build.
February 26, 2010	Issued Notice-to-Proceed to Brutoco Engineering & Construction, Inc. for Contract No. C0943 Design-Build, effective March 1, 2010.
March 24, 2010	Set up Integrated Project Management Office at construction site.
April 26, 2010	MTA executed agreement with Union Pacific (UP) for various easements for the Lassen bridge located in UP property.
May 3, 2010	Completed all real estate relocations.
May 7, 2010	Metrolink completed new rail signal work and removed existing signals equipment.
May 14, 2010	Completed Privacy Fence at Chatsworth Mobile Home Park (CMHP).

**Note: For Chronology of Events prior to January 2010, see the May 2010 Monthly Project Status Report.**