



Metro Orange Line Extension

QUARTERLY PROJECT STATUS REPORT



TABLE OF CONTENTS

	Page No.
Project Overview.....	1-2
Management Issues.....	2-3
Project Status	
• Project Scope.....	4
• Schedule	
○ Schedule Narrative	5
○ Summary Schedule.....	6
• Project Cost Status and Analysis.....	7
• Financial/Grant Status.....	8
• Staffing.....	9-11
• Real Estate.....	12
• Quality Assurance.....	12
• Environmental.....	13
• Community Relations.....	13
• Art Development.....	13
• Safety.....	14
• Third Party.....	14
• Contract C0943 Status.....	15
• Construction Photographs.....	16-17

PROJECT OVERVIEW

The Metro Orange Line (MOL) Extension Project is a four-mile extension of the Metro Orange Line extending from the Canoga park-and-ride lot to the Chatsworth Metrolink Station. The Project includes: busway, new station platforms at the Canoga park-and-ride lot, new stations at Sherman Way (with park-and-ride), Roscoe Boulevard, Nordhoff Street, and the Chatsworth Metrolink Station (with park-and-ride); grade-separation structure over active railroad tracks and Lassen Street (Lassen bridge) providing direct access into the Chatsworth Metrolink Station; Los Angeles River and Santa Susana Wash bridge crossings; and satellite bus parking facility. The project also includes street improvements, bicycle/pedestrian path, systems equipment and landscaping similar to the MOL.

With the MTA Board adoption of the MOL Extension Project in January 2009, the Board directed staff to accelerate the completion of the Project to summer 2012.

Major Accomplishments to date:

- Constructed the north parking lot at Chatsworth station,
- Completed final design and obtained approvals of Lassen bridge,
- Relocated tracks and completed new rail signals (by Metrolink),
- Completed all real estate relocations and acquired easements from UP,
- Constructed Privacy Fence/walls adjacent to mobile homes,
- Demolished vacant structures, removed excess vegetation and trees, and cleared the right of way,
- Removed known hazardous materials and contaminated soils,
- Constructed underground ducts on Lassen Street. DWP and Time Warner has relocated overhead lines to underground, and
- Completed construction of the substructure and deck for Lassen bridge.

The design builder, Brutoco Engineering & Construction, Inc, started on March 1, 2010 and is responsible for the construction of the Lassen bridge and Lassen Street improvements as well as for the design and construction of the remaining Project scope of work. The design builder:

- Completed 97% of the final design of the busway, street crossings, bikeway, stations and remaining bridges.
- Continued grading of the busway/bikeway, base paving of the busway, storm drain, stations, and communication ductbank installation.
- Continued construction of Lassen bridge superstructure. Commenced fabrication of LA River bridge girders, MSE wall panels and station canopy.
- Continued construction along Canoga Avenue (pinch point) and at street intersections.
- Continued coordination with utility companies for relocations of power and communication lines at pinch point and impacted intersections, and sewer encasements at Saticoy intersection.

PROJECT OVERVIEW (Contd)

Other Project specific items required for revenue operations includes:

- Purchase and install fare collection equipment – The Contractor, Cubic Transportation Systems, Inc., has completed all long lead material purchases and the material is at their Tennessee facility. Assembly will begin in 1st quarter of FY12 in anticipation of equipment delivery in 3rd quarter of FY12.
- Station Artwork – Artwork for all five stations are 100% complete. Received 20 proposals for porcelain enamel steel art panel fabrication and 15 proposals for glass/stone mosaic ellipse fabrication.
- Vehicles – Operations (Central Maintenance Department), Thirteen midlife overhauls have been completed on 9200s buses designated for the Orange Line as of June 30, 2011. Labor resources in the month of June were diverted to performing the engine installation portion on the buses designated for the Orange Line that were completed and released into revenue service prior to the parts set-up and installation process for the engine being finalized. Operations have adjusted their plan and will target four a month from July 2011 to March 2012 to complete the project on time. Operations have four buses in process scheduled to be released this month.
- Developing design packages for additional signage at existing Canoga and the Orange Line platforms.

To date, commitments are \$120.2 million or 55.8% of the Original Budget. Expenditures are \$54.7 million or 25.4% of the \$215.6 million Original Budget. Design-builder's final design percent complete is 97% and construction physical percent complete is 27%.

MANAGEMENT ISSUES

Concern No. 1: Design builder has not obtained City's design approvals, which is delaying construction of intersection and other city improvements.

Status/Action Working with the City to expedite approval of completed designs.

Concern No. 2: Design builder has not obtained DWP's approval of vertical clearance between proposed signal/street light poles and overhead wires. This is delaying ordering proposed poles with a long delivery time. DWP to relocate overhead power lines at Canoga pinch point and at impacted street intersections.

Status/Action Issued directions to the contractor to order poles and continue to work with DWP to obtain approvals and complete relocation work.

MANAGEMENT ISSUES (Cont'd)

Concern No. 3: Design builder is showing significant delays in completion milestone due to Concern No. 1 and 2 above.

Status/Action The design builder submitted a schedule mitigation plan on June 13, 2011 and was approved with a substantial completion forecast of March 6, 2012. Metro continues to reject monthly updates to the approved baseline schedule and is working with the design builder to further mitigate milestone impacts. Metro does not support delays and still anticipates a summer 2012 opening of the project.

PROJECT SCOPE



C0943: Metro Orange Line Extension (MOL Ext) is a design-build contract to construct the majority of the Project scope of work. This contract will include design and construction of busway, new stations at Sherman Way (with park-and-ride), Roscoe Boulevard, Nordhoff Street, and Chatsworth Metrolink Station (with park-and-ride). The existing MOL Canoga park-and-ride lot will be modified with new station platforms. In addition, the contractor will design and construct approaches to the Lassen bridge, a bridge over the Los Angeles River, a smaller bridge over the Santa Susana Wash, street improvements, bicycle/pedestrian path, satellite bus parking facility, landscaping, systems equipment, and system integration and testing. In August 2009, the Lassen bridge (500' long 3-span bridge over active railroad tracks/Lassen Street) and Lassen Street Improvements were added to Contract C0943.

C0941: North Parking Lot (Chatsworth Station) is a construction contract for a new parking lot to be constructed north of the existing Chatsworth Metrolink Station. Completion of this lot is required before the south parking lot is modified to ensure that parking is continuously available for Metrolink patrons during construction of the MOL Extension.

Work Order – Advance Metrolink Rail Signal Modifications, Track Realignment, and At-Grade Lassen Crossing Enhancements is to be substantially completed by Metrolink in advance of the Design-Build Contractor commencing construction of portions of the Lassen bridge.

Work Order - Advance Relocation of power, fiber optic and communication lines on Lassen Street is to be completed by LADWP and the affected utility companies prior to the Design-Build Contractor commencing construction of portions of the Lassen bridge.

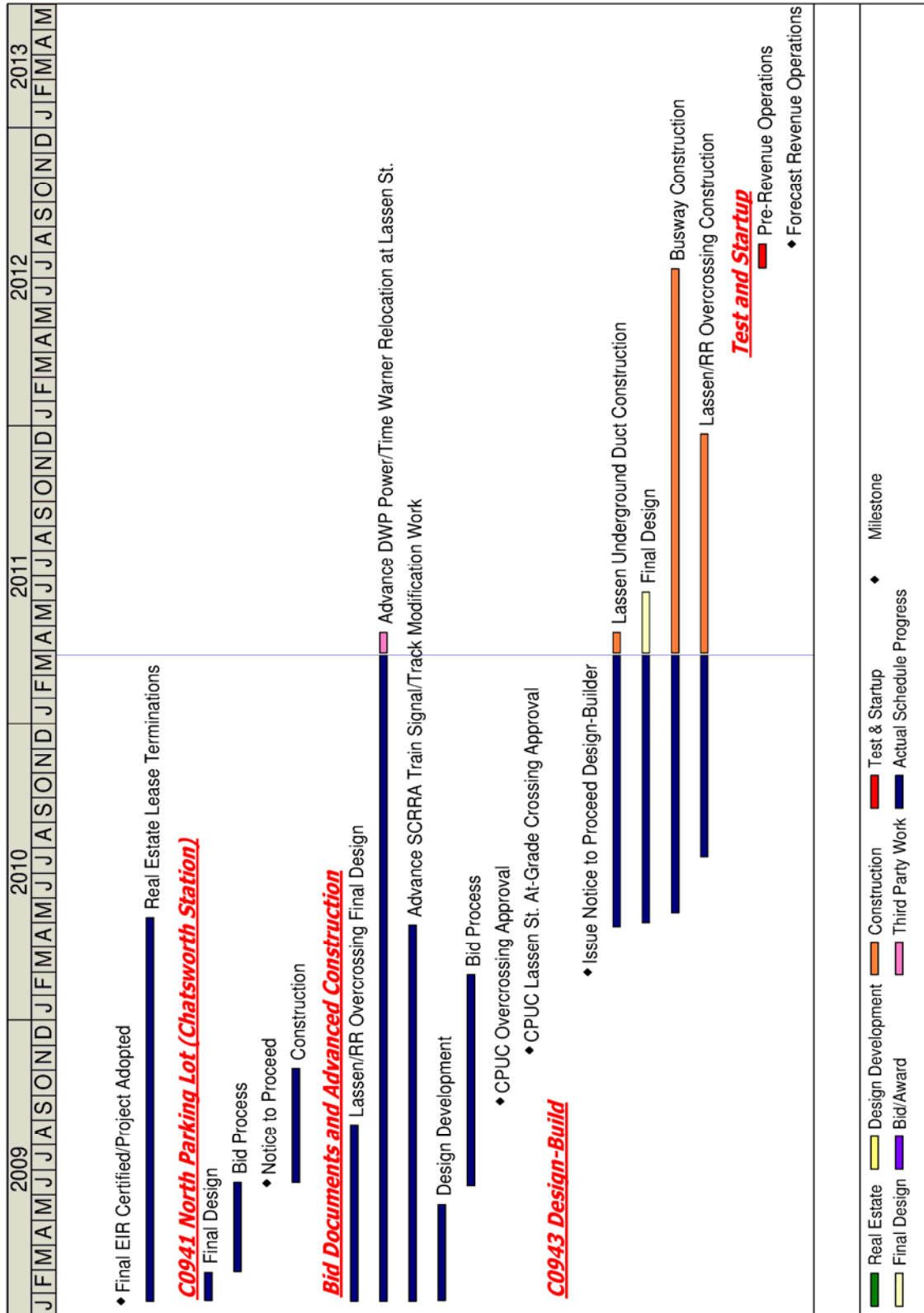
SCHEDULE NARRATIVE

Critical Path:

The Design Builder has submitted 100% design submittals and currently incorporation of City of Los Angeles comments is driving approved for construction drawings. Partial design packages have been issued for construction. However, the approval of remaining design elements, pre-construction submittals and DWP power line relocations continues to impact the longest path, including street restoration, street lighting, temporary signal/lighting and work site plans, systems design, red light photo enforcement, and 'bulk' procurement of traffic and street light poles. This impacts critical intersections starting with Roscoe, Valerio, Van Owen and continuing through Nordhoff. The critical path concludes with systems installation and testing.

The Design Builder has begun procurement of traffic and street light poles as well as the re-sequencing of intersection work to mitigate delays and reach a summer opening.

SUMMARY SCHEDULE



PROJECT COST STATUS - 800119

COST REPORT BY ELEMENT

UNITS IN MILLIONS

ELEMENT	DESCRIPTION	ORIGINAL BUDGET	CURRENT BUDGET		COMMITMENTS		EXPENDITURES		CURRENT FORECAST		FORECAST VARIANCE
			PERIOD	TO DATE	PERIOD	TO DATE	PERIOD	TO DATE	PERIOD	TO DATE	
C	CONSTRUCTION	137.3	-	137.3	0.7	91.7	1.6	31.2	-	118.5	(18.8)
R	RIGHT-OF-WAY	8.0	-	8.0	-	4.2	0.4	2.1	-	4.2	(3.8)
V	VEHICLES / BUSES	9.9	-	9.9	0.3	3.5	0.3	3.5	-	9.9	-
P	PROFESSIONAL SERVICES	38.7	-	38.7	-	20.8	0.6	17.9	-	34.0	(4.7)
PC	PROJECT CONTINGENCY	21.7	-	21.7	-	-	-	-	-	13.4	(8.3)
PB	PROJECT RESERVE	-	-	-	-	-	-	-	-	35.6	35.6
PR	PROJECT REVENUE	-	-	-	-	-	-	-	-	-	-
TOTAL		215.6	-	215.6	1.0	120.2	2.9	54.7	-	215.6	-

NOTE: EXPENDITURES ARE CUMULATIVE THROUGH MAY 2011.

PROJECT COST ANALYSIS

Original Budget and Current Budget:

The Life of Project Budget for the Metro Orange Line Extension Project construction effort was adopted in January 2009 for a value of \$215.6 million. This amount does not include the prior planning and environmental development costs of \$5.4 million. The current budget remains the same as the Original Budget.

Current Forecast: The total project forecast remains the same at \$215.6 million.

Commitments:

The commitments increased by \$1.0 million this period. In the Construction element there was an increase of \$0.7 million primarily for executed contract modifications associated with the Design-Build Contract C0943. In the Vehicle element there was an increase of \$0.3 million for midlife overhaul of existing Orange Line buses. The \$120.2 million in commitments to date represents 55.8% of the current budget.

Expenditures:

The expenditures are cumulative through May 2011. The expenditures increased by \$2.9 million this period. In the Construction element there was an increase of \$1.6 million for cost associated with the Design-Build Contract C0943, environmental consultants, and third party scope of work. In the Right-of-Way element there was an increase of \$0.4 million for costs associated with relocation for Pre-Tenants. In the Vehicle element there was an increase of \$0.3 million for midlife overhaul of existing Orange Line buses. In the Professional Services element there was an increase of \$0.6 million for costs associated with final design, construction management support, miscellaneous specialty services, and MTA project administration. The \$54.7 million in expenditures to date represents 25.4% of the current budget.

**FINANCIAL/GRANT STATUS
Project 800119 – Metro Orange Line Extension**

JUNE 2011

STATUS OF FUNDS BY SOURCE

\$ in millions

SOURCE	(A)	(B)	(C)	(D)	(D/B)	(E)	(E/B)	(F)	(F/B)
	ORIGINAL	TOTAL	TOTAL	COMMITMENTS		EXPENDITURES		BILLED to FUNDING	
	BUDGET	FUNDS	FUNDS	\$	%	\$	%	\$	%
	(1)	ANTICIPATED	AVAILABLE					SOURCE	
		(2)							
PROP 1B FUNDS-PTMISEA*	68.0	68.0	40.5	68.0	100%	40.5	60%	39.9	59%
PROP 1B FUNDS-SLTPP**	73.8	73.8	49.2	52.2	71%	14.2	19%		0%
PROP C 25%	73.8	73.8			0%		0%		0%
TOTAL	215.6	215.6	89.7	120.2	55.8%	54.7	25.4%	39.9	19%

(1) Based on January 2009 MTA Board adoption of Life of Project (LOP) Budget. This amount does not include the prior planning and development costs of \$5.4 million.

(2) Based on March 2009 Capital Programming Revised Financial Plan.

* PTMISEA: Public Transportation Modernization and Improvement Surface Enhancement Account

** SLTPP: State - Local Transportation Partnership Program

NOTE: Expenditures are cumulative through May 2011.

STATUS OF FUNDS ANTICIPATED

STATE PROP 1B – PTMISEA: MTA submitted a request to Caltrans to allocate \$27.5 million of FY10 funds to the Project. The allocation request was expected to be approved in September 2010. However, due to the delay in the State issuing new bonds, the date when these funds may be released is pending.

STATE PROP 1B – SLTPP: At the January 2011 Meeting, the CTC approved MTA's December 2009 \$14.7M and May 2010 \$34.5M allocation requests. Both Grants are available for drawdown.

STAFFING STATUS

Total Project Staffing - FTES



Total Project Staffing

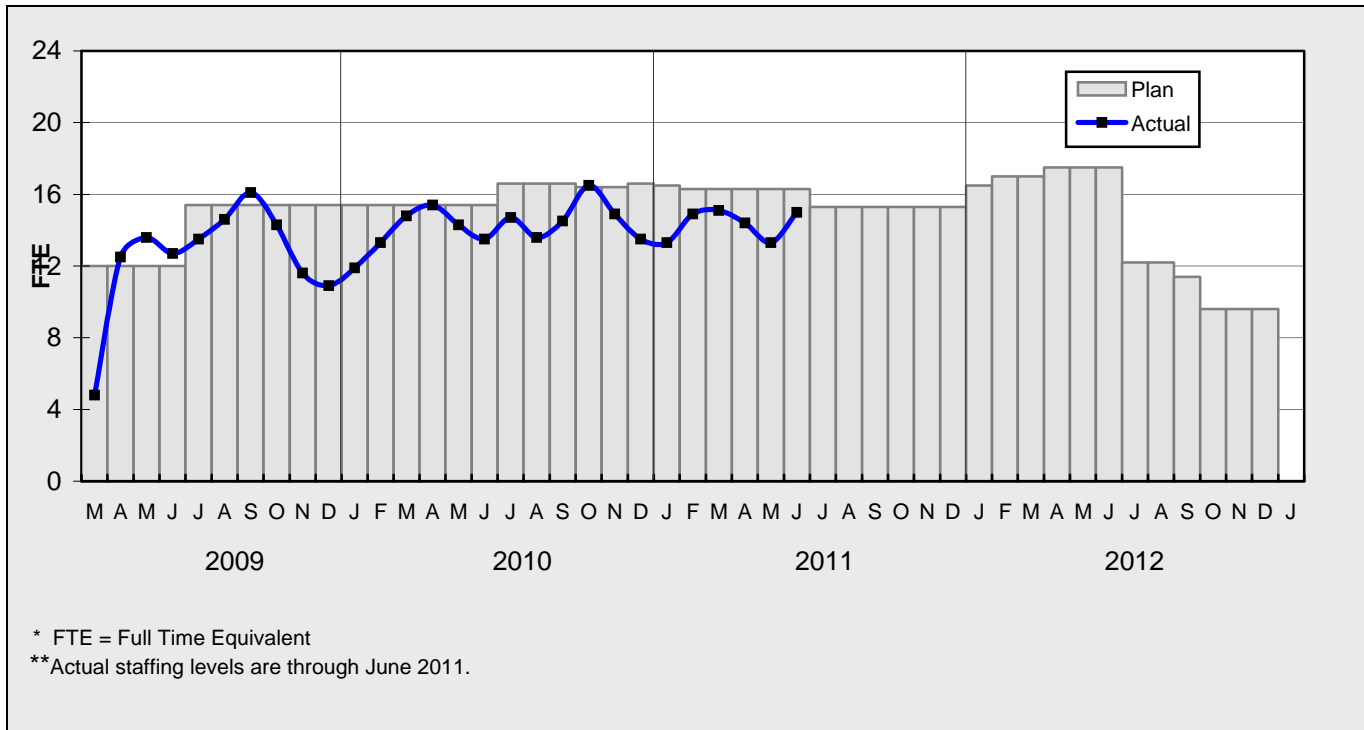
The overall FY11 Total Project Staffing plan averages 25.1 FTE's per month.

For June 2011, there were a total of 15.0 FTE's for MTA's Project Administration staff and 6.4 FTE's for consulting staff. The total project staffing was 21.4 FTE's for June 2011.

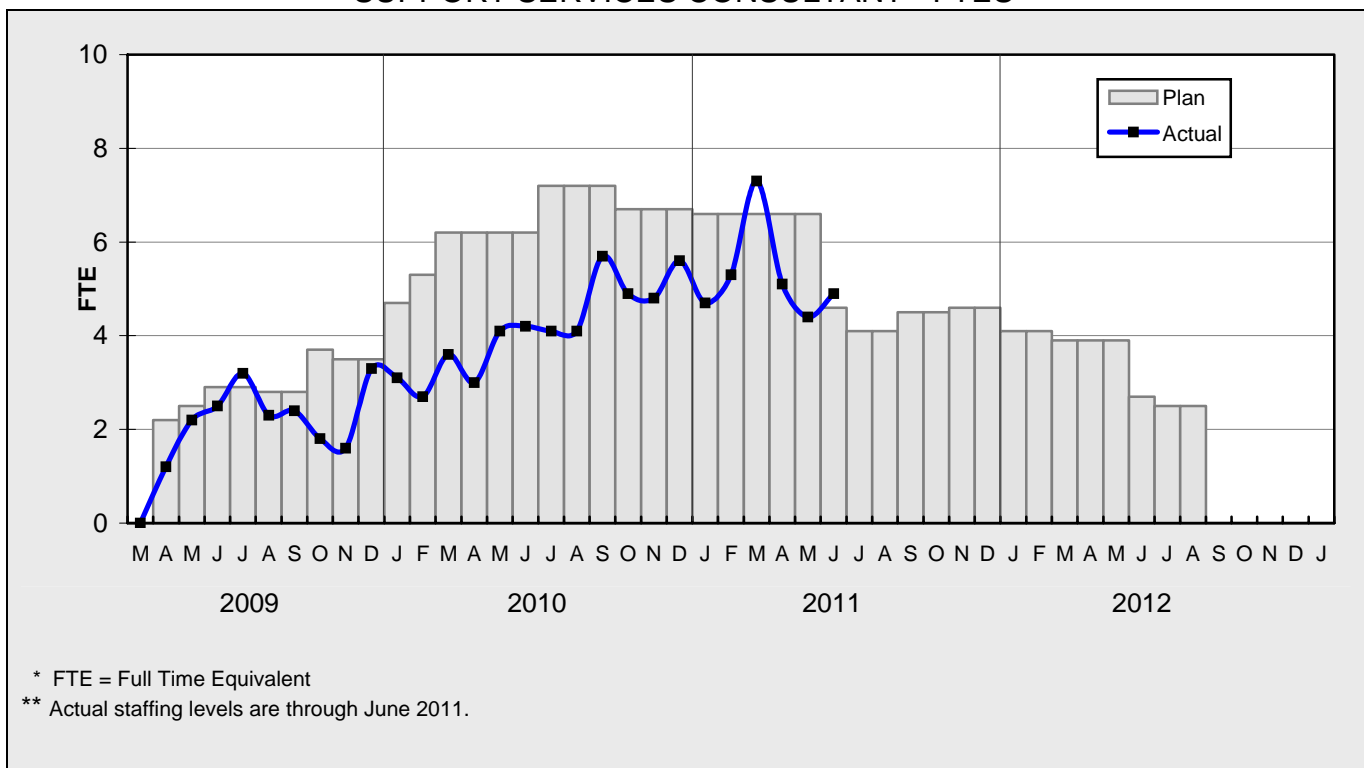
Staffing for the Central Maintenance Department's midlife overhaul of Orange Line buses are not included as an FTE but are included within the vehicle cost element (see Page 7 Element V).

STAFFING STATUS

MTA STAFFING - FTES

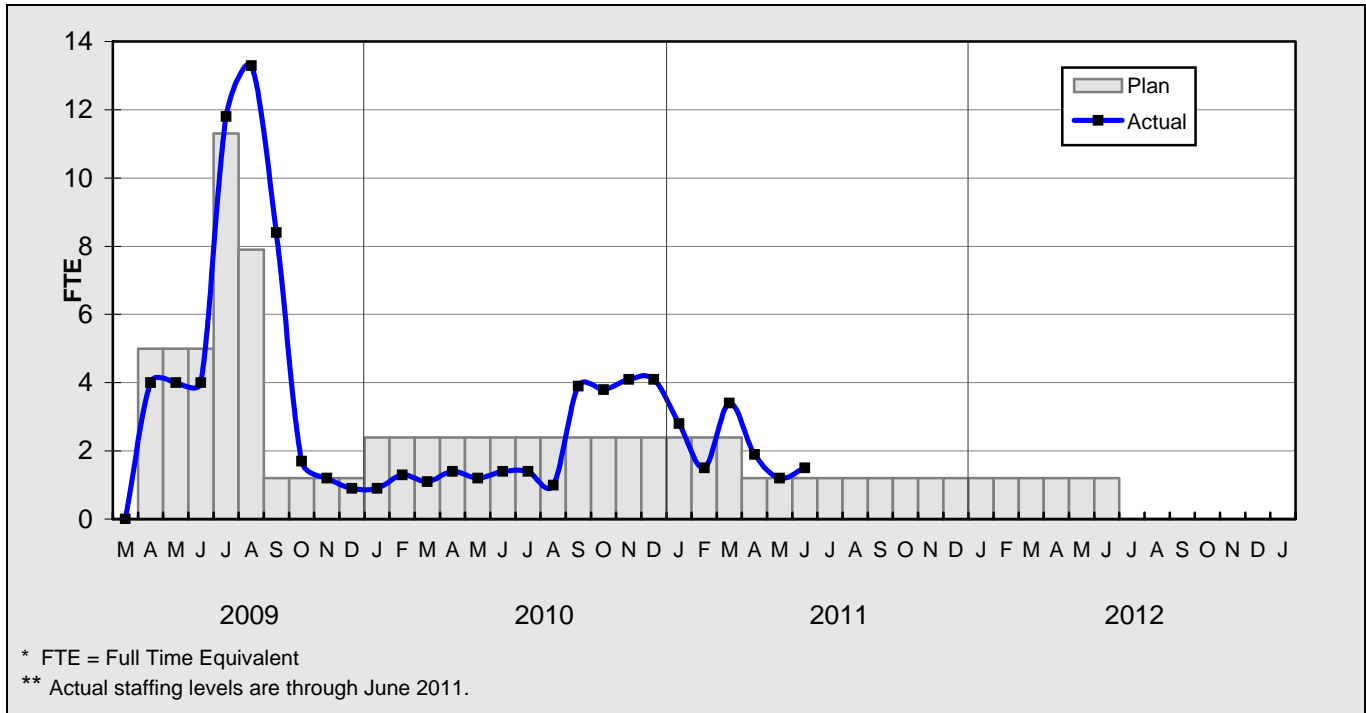


CONSTRUCTION MANAGEMENT SUPPORT SERVICES CONSULTANT - FTES



STAFFING STATUS

ENGINEERING SERVICES CONSULTANT



REAL ESTATE STATUS

- UPRR sent the license to LADWP for underground utilities across UPRR property on August 25, 2010 for approval. The License is being routed for City staff approval.
- MTA sent license to LADWP for the installation of underground utilities across MTA property. The License is being routed for City staff approval.
- Executed Road Easement Deed from Chatsworth Mobile Home Park owner has been forwarded to the City of Los Angeles for acceptance and recording.
- MTA is working with National Ready Mixed Services Company to relocate the boundry wall and reduce the size of the lease area.

LEASES

- All Real Estate work required to clear the ROW is completed.

	Total Leases	Total Leases to be Terminated	Total Leases to Remain with Modified Lease	Leases to Remain Under Existing Lease	Relocations Completed	Total Signboards Removed
Leases	82	78	3	1	52	26

QUALITY ASSURANCE STATUS

- Attended weekly job and readiness review meetings with Brutoco.
- Monitored the construction work along the alignment.

ENVIRONMENTAL STATUS

- Continued air monitoring activities to monitor air quality during construction activities.
- Continued monitoring stormwater Best Management Practices (BMP's) to control stormwater flow from going off-site.
- Reviewing Standard Urban Stormwater Mitigation Plan (SUSMP).

COMMUNITY RELATIONS STATUS

- Distributed 300 construction notices for construction safety door hangers, and 1,500 construction notices for nighttime concrete placement for the lower section of the Lassen Street Bridge.
- Coordinated field visit between Project staff, Contractor and residents at Deering.
- Coordinated work activities regarding nighttime construction work in residential zone.
- Coordinated air monitoring at Staybridge Suites.

ART DEVELOPMENT STATUS

- Received 20 proposals for porcelain enamel steel art panel fabrication.
- Received 15 proposals for glass/stone mosaic ellipse fabrication.
- Held a meeting with design build team regarding mosaic paving installation.

SAFETY STATUS

CO943:


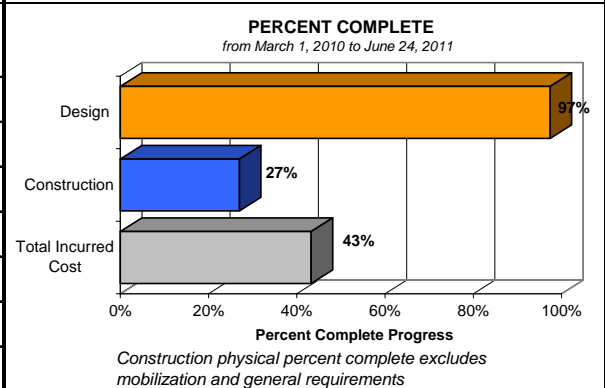
- Participated in weekly progress meetings with Construction Management and Contractor and Tool-box Safety Meetings to discuss safety and security related issues and future construction schedules.
- Participated in Contractor’s onsite monthly safety audit. Discrepancies were noted and corrected.
- Coordinated mandatory Metrolink Safety Training with MTA staff and Contractor personnel.
- Monitored construction activities on a daily basis including night-work to ensure safety compliance with contract specifications.
- Brutoco and their subcontractors reported one recordable incident and 18,956 work hours for the month of June 2011. Total project to date work hours are 134,456 and the incident rate is zero.

THIRD PARTY AGREEMENT STATUS

Third Party	Type of Agreement	Forecast Execution Date	Required Need Date	Status/ Comments
City of Los Angeles	Licensing Agreement	7/11	N/A	LADOT has agreed to continue reviewing design. In parallel, MTA shall work on identifying other options (hardscape in lieu of landscaping) that can lower the cost of maintenance for the City. Once design is agreed upon, that design will be incorporated into the agreement. Intent is to still have the City maintain the bike path and landscaping/hardscape outside the fenceline.
City of Los Angeles	O & M Agreement	7/11	N/A	MTA received comments back from LADOT that contradict the previous agreements. MTA shall meet with LADOT to resolve the issues.

Note: For a list of all Third Party Agreements, that have been executed, please see the May 2010 Monthly Project Status Report.

CONTRACT C0943 STATUS

<p>Design Builder Contractor: Brutoco, Engineering and Construction, Inc.</p>	<p>Contract No.: C0943 Status as of: July 1, 2011</p>																																									
<p>Progress/Work Completed:</p> <p>Progress in addition to progress reported on page 1.</p> <ul style="list-style-type: none"> - Issued for Construction DU 1 Retaining Walls. - Issued for Construction DU 4 Red Light Photo Enforcement. - Issued for Construction DU 5 Street Improvements Intersections. - Issued for Construction Santa Susana Bridge and Bikeway Improvements. - Issued for Construction DU 1 MSE Walls. - Setting forms for MSE Walls #3 and 4. - Excavation for Abutment 1 at Santa Susanna Bridge. - Install communication conduits at Roscoe Station. - City approved stages 3 and 4 Work Site Traffic Control Plans and Temporary Signal Plan for Nordoff, Saticoy and Valerio. - City approved Temporary Street Lighting Plan Stage 4 - Roscoe and Parthenia signed on 6/2/11. 	<p>Areas of Concern:</p> <ul style="list-style-type: none"> - See Management Issues page 2. 																																									
<p>Schedule Assessment:</p> <p>The design builder's June Schedule Update to the approved Baseline Schedule continues to indicate potential delays in achieving future Contract Milestones. The design builder submitted the MTA requested schedule mitigation plan on 6/13/11. MTA approved the mitigation plan for Milestone #1 with a substantial completion forecast of March 6, 2012 and requested further mitigation schedules to contractually late Milestones.</p> <p>Note: The forecast dates for Contract Milestones shown in the table below are based on the June Schedule Update. MTA will reject this Update and continue to work with the design builder to develop a revised schedule mitigation plan.</p>	<p>Cost Assessment:</p> <p>The current construction contract cost forecast is \$83.97 million and is within the Board authorized budget.</p> <p>The Design Builder submitted their 16th payment application in the approved amount of \$3.8 million.</p> <p>Increase in costs to the construction contract award value are a result of design enhancements and change orders.</p>																																									
<p>Schedule Summary:</p> <table border="0"> <tr> <td>1. Date of Award:</td> <td>02/10/10</td> </tr> <tr> <td>2. Notice to Proceed:</td> <td>03/01/10</td> </tr> <tr> <td>3. Original Substantial Completion Duration:</td> <td>730</td> </tr> <tr> <td>4. Current Substantial Completion Duration:</td> <td>730</td> </tr> <tr> <td>5. Elapsed Time from NTP:</td> <td>480</td> </tr> </table>	1. Date of Award:	02/10/10	2. Notice to Proceed:	03/01/10	3. Original Substantial Completion Duration:	730	4. Current Substantial Completion Duration:	730	5. Elapsed Time from NTP:	480	<p>Cost Summary: \$ In 000's</p> <table border="0"> <tr> <td>1. Award Value:</td> <td>82.49</td> </tr> <tr> <td>2. Executed Modifications:</td> <td>1.40</td> </tr> <tr> <td>3. Approved Change Orders:</td> <td>0.08</td> </tr> <tr> <td>4. Current Contract Value (1 + 2 + 3):</td> <td>83.97</td> </tr> <tr> <td>5. Incurred Cost:</td> <td>36.32</td> </tr> </table>		1. Award Value:	82.49	2. Executed Modifications:	1.40	3. Approved Change Orders:	0.08	4. Current Contract Value (1 + 2 + 3):	83.97	5. Incurred Cost:	36.32																				
1. Date of Award:	02/10/10																																									
2. Notice to Proceed:	03/01/10																																									
3. Original Substantial Completion Duration:	730																																									
4. Current Substantial Completion Duration:	730																																									
5. Elapsed Time from NTP:	480																																									
1. Award Value:	82.49																																									
2. Executed Modifications:	1.40																																									
3. Approved Change Orders:	0.08																																									
4. Current Contract Value (1 + 2 + 3):	83.97																																									
5. Incurred Cost:	36.32																																									
<table border="1"> <thead> <tr> <th>Contract Milestones</th> <th>Original Contract</th> <th>Current Contract</th> <th>Forecast (see note above)</th> <th>Calendar Day Variance</th> </tr> </thead> <tbody> <tr> <td>Milestone 1 - Contract Substantial Completion</td> <td>02/29/12</td> <td>02/29/12</td> <td>10/25/12</td> <td>-239</td> </tr> <tr> <td>Milestone 2 - Complete Universal Fare System Requirements</td> <td>11/01/11</td> <td>11/01/11</td> <td>10/19/11</td> <td>13</td> </tr> <tr> <td>Milestone 3 - Elect/Communication Requirements Complete</td> <td>01/30/12</td> <td>01/30/12</td> <td>08/30/12</td> <td>-213</td> </tr> <tr> <td>Milestone 4 - Passenger Information System Testing Complete</td> <td>02/29/12</td> <td>02/29/12</td> <td>10/12/12</td> <td>-226</td> </tr> <tr> <td>Milestone 5 - System Assurance Complete</td> <td>02/28/13</td> <td>02/28/13</td> <td>10/22/13</td> <td>-236</td> </tr> <tr> <td>Milestone 6 - Landscape and Planting Maintenance and Warranty</td> <td>02/28/14</td> <td>02/28/14</td> <td>02/28/14</td> <td>0</td> </tr> <tr> <td>Option C - Undergrounding of DWP Power line at Lassen Street</td> <td>05/30/10</td> <td>05/30/10</td> <td>12/6/2010 A</td> <td>-190</td> </tr> </tbody> </table>	Contract Milestones	Original Contract	Current Contract	Forecast (see note above)	Calendar Day Variance	Milestone 1 - Contract Substantial Completion	02/29/12	02/29/12	10/25/12	-239	Milestone 2 - Complete Universal Fare System Requirements	11/01/11	11/01/11	10/19/11	13	Milestone 3 - Elect/Communication Requirements Complete	01/30/12	01/30/12	08/30/12	-213	Milestone 4 - Passenger Information System Testing Complete	02/29/12	02/29/12	10/12/12	-226	Milestone 5 - System Assurance Complete	02/28/13	02/28/13	10/22/13	-236	Milestone 6 - Landscape and Planting Maintenance and Warranty	02/28/14	02/28/14	02/28/14	0	Option C - Undergrounding of DWP Power line at Lassen Street	05/30/10	05/30/10	12/6/2010 A	-190	<p style="text-align: center;">PERCENT COMPLETE from March 1, 2010 to June 24, 2011</p>  <p style="text-align: center;">Percent Complete Progress Construction physical percent complete excludes mobilization and general requirements</p>	
Contract Milestones	Original Contract	Current Contract	Forecast (see note above)	Calendar Day Variance																																						
Milestone 1 - Contract Substantial Completion	02/29/12	02/29/12	10/25/12	-239																																						
Milestone 2 - Complete Universal Fare System Requirements	11/01/11	11/01/11	10/19/11	13																																						
Milestone 3 - Elect/Communication Requirements Complete	01/30/12	01/30/12	08/30/12	-213																																						
Milestone 4 - Passenger Information System Testing Complete	02/29/12	02/29/12	10/12/12	-226																																						
Milestone 5 - System Assurance Complete	02/28/13	02/28/13	10/22/13	-236																																						
Milestone 6 - Landscape and Planting Maintenance and Warranty	02/28/14	02/28/14	02/28/14	0																																						
Option C - Undergrounding of DWP Power line at Lassen Street	05/30/10	05/30/10	12/6/2010 A	-190																																						

CONSTRUCTION PHOTOGRAPHS



C0943 Design Build Contractor works on mechanical stabilized earth wall leading from Lassen Bridge into Chatsworth Station .



View from on top of placed deck for Lassen Bridge looking north to Chatsworth Station.

CONSTRUCTION PHOTOGRAPHS



C0943 Design Build Contractor works on new Los Angeles River Bridge.