



# Metro Orange Line Extension

## MONTHLY PROJECT STATUS REPORT



## TABLE OF CONTENTS

	Page No.
Project Overview.....	1-2
Management Issues.....	2
Project Status	
• Project Scope.....	3
• Schedule	
○ Schedule Narrative .....	4
○ Summary Schedule.....	5
• Project Cost Status and Analysis.....	6
• Financial/Grant Status.....	7
• Staffing.....	8-10
• Real Estate.....	11
• Quality Assurance.....	11
• Environmental.....	12
• Community Relations.....	12
• Art Development.....	12
• Safety.....	13
• Third Party.....	13
• Contract C0943 Status.....	14
• Construction Photographs.....	15

## **PROJECT OVERVIEW**

*The Metro Orange Line (MOL) Extension Project is a four-mile extension of the Metro Orange Line extending from the Canoga park-and-ride lot to the Chatsworth Metrolink Station. The Project includes: busway, new station platforms at the Canoga park-and-ride lot, new stations at Sherman Way (with park-and-ride), Roscoe Boulevard, Nordhoff Street, and the Chatsworth Metrolink Station (with park-and-ride); grade-separation structure over active railroad tracks and Lassen Street (Lassen bridge) providing direct access into the Chatsworth Metrolink Station; Los Angeles River and Santa Susana Wash bridge crossings; and satellite bus parking facility. The project also includes street improvements, bicycle/pedestrian path, systems equipment and landscaping similar to the MOL.*

With the MTA Board adoption of the MOL Extension Project in January 2009, the Board directed staff to accelerate the completion of the Project to summer 2012.

Major Accomplishments to date:

- Constructed the north parking lot at Chatsworth station,
- Completed final design and obtained approvals of Lassen bridge,
- Relocated tracks and completed new rail signals (by Metrolink),
- Completed all real estate relocations and acquired easements from UP,
- Constructed Privacy Fence/walls adjacent to mobile homes,
- Demolished vacant structures, removed excess vegetation and trees, and cleared the right of way,
- Removed known hazardous materials and contaminated soils,
- Constructed underground ducts on Lassen Street. DWP and Time Warner has relocated overhead lines to underground, and
- Completed construction of the foundations for Lassen bridge.

The design builder, Brutoco Engineering & Construction, Inc, started on March 1, 2010 and is responsible for the construction of the Lassen bridge and Lassen Street improvements as well as for the design and construction of the remaining Project scope of work. The design builder:

- Completed 96% of the final design of the busway, street crossings, bikeway, stations and remaining bridges.
- Continued grading of the busway/bikeway, base paving of the busway, storm drain, and communication ductbank installation.
- Continued construction of Lassen bridge superstructure.
- Continued coordination with utility companies for powerline relocations at pinch point and impacted intersections, gas line relocation at the Nordoff intersection, and sewer encasements at Saticoy intersection.
- Commenced intersection construction starting with the right turn lanes.

## **PROJECT OVERVIEW (Contd)**

Other Project specific items required for revenue operations includes:

- Purchase and install fare collection equipment – The Contractor, Cubic Transportation Systems, Inc., has completed all long lead material purchases and the material is at their Tennessee facility. Assembly will begin in 1st quarter of FY12 in anticipation of equipment delivery in 3rd quarter of FY12.
- Station Artwork – Artwork for all five stations are 100% complete. Request for Proposals have been released and proposals are expected end of June 2011 for glass/stone mosaic paved ellipse and porcelain enamel steel art panel fabrications.
- Vehicles – Operations (Central Maintenance Department), Thirteen midlife overhauls have been completed on 9200s buses designated for the Orange Line as of May 30, 2011. Three more buses are in process. Still on track to complete four buses a month from June 2011 thru October 2011 and then three buses per month from November 2011 thru March 2012.
- Developing design packages for additional signage at existing Canoga and the Orange Line platforms.

To date, commitments are \$119.2 million or 55.3% of the Original Budget. Expenditures are \$51.8 million or 24.1% of the \$215.6 million Original Budget. Design-builder's final design percent complete is 96% and construction physical percent complete is 21%.

## **MANAGEMENT ISSUES**

**Concern No. 1:** Design builder has not obtained City's design approvals, which is delaying construction of intersection and other city improvements.

**Status/Action** Working with the City to expedite approval of completed designs.

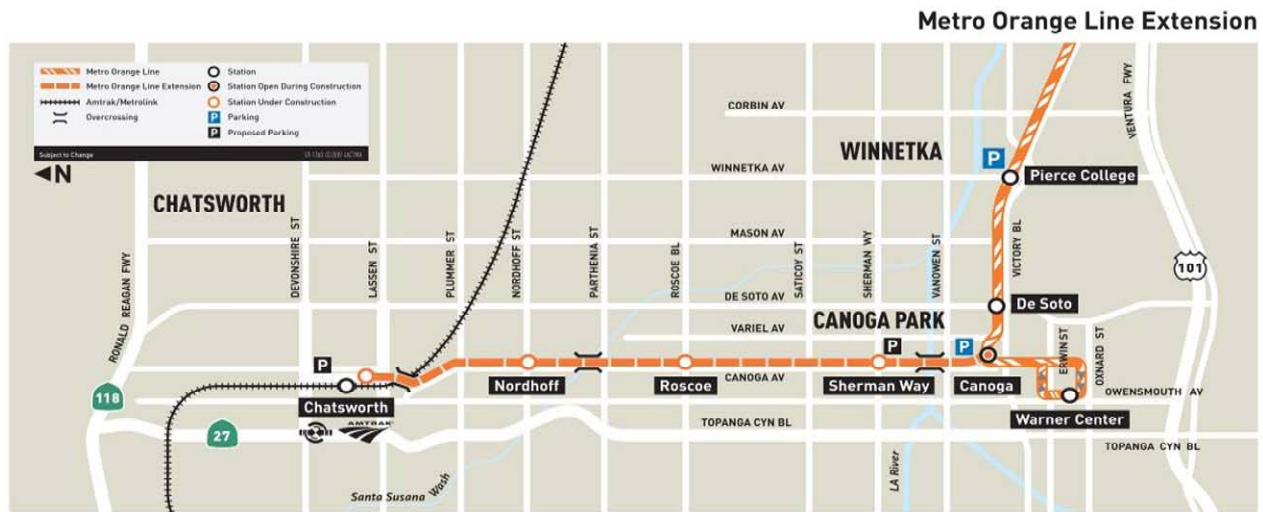
**Concern No. 2:** Design builder has not obtained DWP's approval of vertical clearance between proposed signal/street light poles and overhead wires. This is delaying ordering proposed poles with a long delivery time. DWP to relocate overhead power lines at Canoga pinch point and at impacted street intersections.

**Status/Action** Working with DWP to obtain approvals and complete relocation work.

**Concern No. 3:** Design builder is showing significant delays in completion milestone due to Concern No. 1 and 2 above.

**Status/Action** The design builder is late in providing the schedule mitigation plan and continues to fall further behind. Working with the design builder to submit a schedule mitigation plan. Metro does not support delays and still anticipates a summer 2012 opening of the project.

**PROJECT SCOPE**



**C0943: Metro Orange Line Extension (MOL Ext)** is a design-build contract to construct the majority of the Project scope of work. This contract will include design and construction of busway, new stations at Sherman Way (with park-and-ride), Roscoe Boulevard, Nordhoff Street, and Chatsworth Metrolink Station (with park-and-ride). The existing MOL Canoga park-and-ride lot will be modified with new station platforms. In addition, the contractor will design and construct approaches to the Lassen bridge, a bridge over the Los Angeles River, a smaller bridge over the Santa Susana Wash, street improvements, bicycle/pedestrian path, satellite bus parking facility, landscaping, systems equipment, and system integration and testing. In August 2009, the Lassen bridge (500' long 3-span bridge over active railroad tracks/Lassen Street) and Lassen Street Improvements were added to Contract C0943.

**C0941: North Parking Lot (Chatsworth Station)** is a construction contract for a new parking lot to be constructed north of the existing Chatsworth Metrolink Station. Completion of this lot is required before the south parking lot is modified to ensure that parking is continuously available for Metrolink patrons during construction of the MOL Extension.

**Work Order – Advance Metrolink Rail Signal Modifications, Track Realignment, and At-Grade Lassen Crossing Enhancements** is to be substantially completed by Metrolink in advance of the Design-Build Contractor commencing construction of portions of the Lassen bridge.

**Work Order - Advance Relocation of power, fiber optic and communication lines on Lassen Street** is to be completed by LADWP and the affected utility companies prior to the Design-Build Contractor commencing construction of portions of the Lassen bridge.

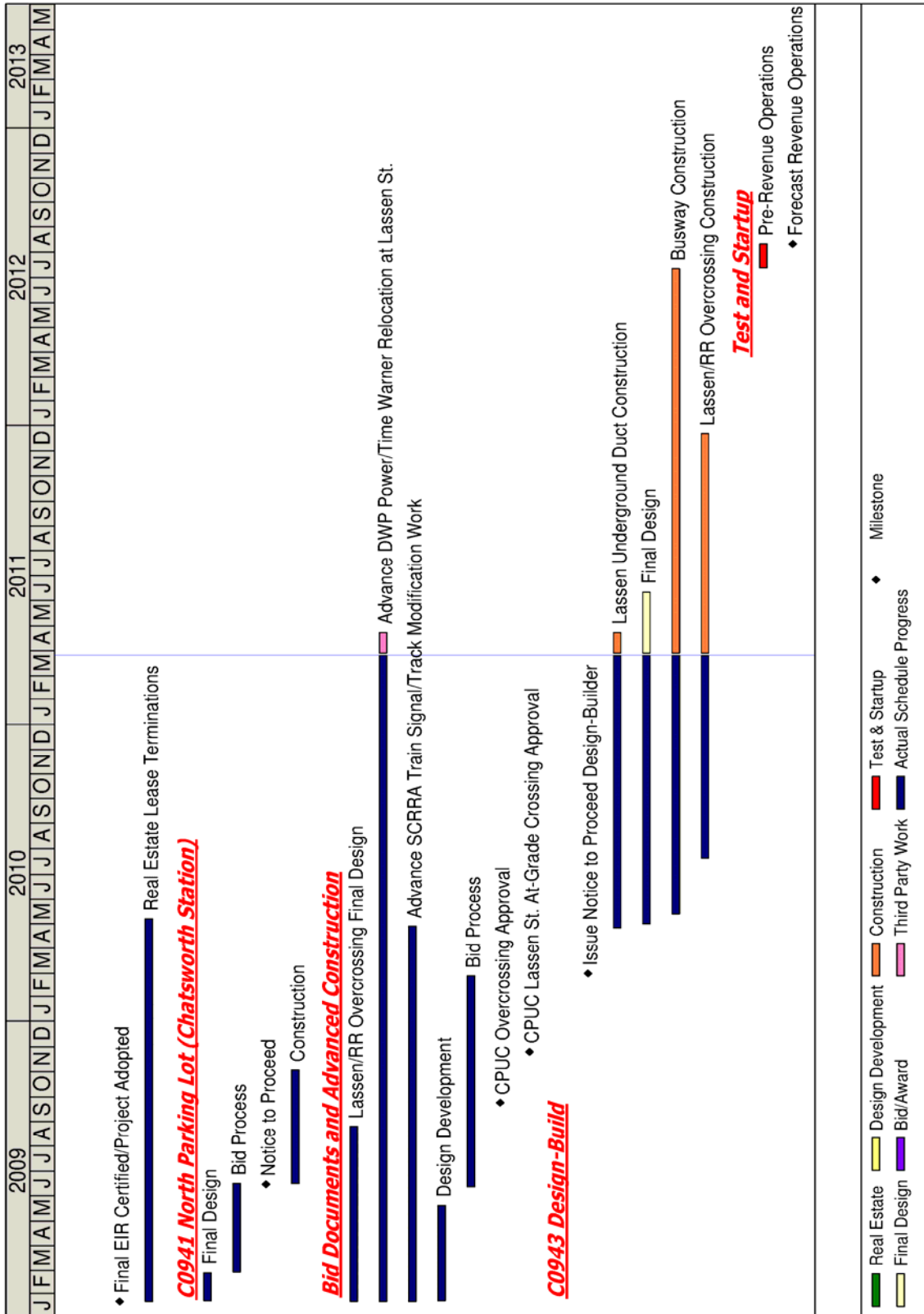
## **SCHEDULE NARRATIVE**

**Critical Path:**

The Design Builder has submitted 100% design submittals and currently incorporation of City of Los Angeles comments is driving approved for construction drawings. Partial design packages have been issued for construction. However, the approval of remaining design elements continues to impact the longest path beginning with 'bulk' procurement of traffic and street light poles. This impacts critical intersections starting with Parthenia, Roscoe, and continuing through Nordhoff. The critical path concludes with systems installation and testing.

Metro has directed the design builder to procure traffic and street light poles and is working with the design builder to mitigate delays and reach a summer opening.

**SUMMARY SCHEDULE**



**PROJECT COST STATUS - 800119**

**COST REPORT BY ELEMENT**

UNITS IN MILLIONS

ELEM- MENT	DESCRIPTION	ORIGINAL BUDGET	CURRENT BUDGET		COMMITMENTS		EXPENDITURES		CURRENT FORECAST		FORECAST VARIANCE
			PERIOD	TO DATE	PERIOD	TO DATE	PERIOD	TO DATE	PERIOD	TO DATE	
C	CONSTRUCTION	137.3	-	137.3	0.2	91.0	1.7	29.6	-	118.5	(18.8)
R	RIGHT-OF-WAY	8.0	-	8.0	-	4.2	-	1.7	-	4.2	(3.8)
V	VEHICLES / BUSES	9.9	-	9.9	0.1	3.2	0.2	3.2	-	9.9	-
P	PROFESSIONAL SERVICES	38.7	-	38.7	-	20.8	0.6	17.3	-	34.0	(4.7)
PC	PROJECT CONTINGENCY	21.7	-	21.7	-	-	-	-	-	13.4	(8.3)
PB	PROJECT RESERVE	-	-	-	-	-	-	-	-	35.6	35.6
PR	PROJECT REVENUE	-	-	-	-	-	-	-	-	-	-
<b>TOTAL</b>		<b>215.6</b>	<b>-</b>	<b>215.6</b>	<b>0.3</b>	<b>119.2</b>	<b>2.5</b>	<b>51.8</b>	<b>-</b>	<b>215.6</b>	<b>-</b>

NOTE: EXPENDITURES ARE CUMULATIVE THROUGH APRIL 2011.

**PROJECT COST ANALYSIS**

**Original Budget and Current Budget:**

The Life of Project Budget for the Metro Orange Line Extension Project construction effort was adopted in January 2009 for a value of \$215.6 million. The current budget remains the same as the Original Budget.

**Current Forecast:** The total project forecast remains the same at \$215.6 million.

**Commitments:**

The commitments increased by \$0.3 million this period. In the Construction element there was an increase of \$0.2 million primarily for executed contract modifications associated with the Design-Build Contract C0943. In the Vehicle element there was an increase of \$0.1 million for midlife overhaul of existing Orange Line buses. The \$119.2 million in commitments to date represents 55.3% of the current budget.

**Expenditures:**

The expenditures are cumulative through April 2011. The expenditures increased by \$2.5 million this period. In the Construction element there was an increase of \$1.7 million for cost associated with the Design-Build Contract C0943, environmental consultants, and third party scope of work. In the Vehicle element there was an increase of \$0.2 million for midlife overhaul of existing Orange Line buses. In the Professional Services element there was an increase of \$0.6 million for costs associated with final design, miscellaneous specialty services, and MTA project administration. The \$51.8 million in expenditures to date represents 24.1% of the current budget.



**FINANCIAL/GRANT STATUS  
Project 800119 – Metro Orange Line Extension**

**MAY 2011**

**STATUS OF FUNDS BY SOURCE**

\$ in millions

SOURCE	(A)	(B)	(C)	(D)	(D/B)	(E)	(E/B)	(F)	(F/B)
	ORIGINAL	TOTAL	TOTAL	COMMITMENTS		EXPENDITURES		BILLED to FUNDING	SOURCE
	BUDGET	FUNDS	FUNDS	\$	%	\$	%	\$	%
	(1)	ANTICIPATED	AVAILABLE						
	(2)								
PROP 1B FUNDS-PTMISEA*	68.0	68.0	40.5	68.0	100%	40.5	60%	39.9	59%
PROP 1B FUNDS-SLTPP**	73.8	73.8	49.2	51.2	69%	11.3	15%		0%
PROP C 25%	73.8	73.8			0%		0%		0%
<b>TOTAL</b>	<b>215.6</b>	<b>215.6</b>	<b>89.7</b>	<b>119.2</b>	<b>55.3%</b>	<b>51.8</b>	<b>24.1%</b>	<b>39.9</b>	<b>18%</b>

(1) Based on January 2009 MTA Board adoption of Life of Project (LOP) Budget. LOP Budget does not include planning and environmental costs.

(2) Based on March 2009 Capital Programming Revised Financial Plan.

\* PTMISEA: Public Transportation Modernization and Improvement Surface Enhancement Account

\*\* SLTPP: State - Local Transportation Partnership Program

NOTE: Expenditures are cumulative through April 2011.

**STATUS OF FUNDS ANTICIPATED**

**STATE PROP 1B – PTMISEA:** MTA submitted a request to Caltrans to allocate \$27.5 million of FY10 funds to the Project. The allocation request was expected to be approved in September 2010. However, due to the delay in the State issuing new bonds, the date when these funds may be released is pending.

**STATE PROP 1B – SLTPP:** At the January 2011 Meeting, the CTC approved MTA's December 2009 \$14.7M and May 2010 \$34.5M allocation requests. Both Grants are available for drawdown.

**STAFFING STATUS  
Total Project Staffing - FTES**



**Total Project Staffing**

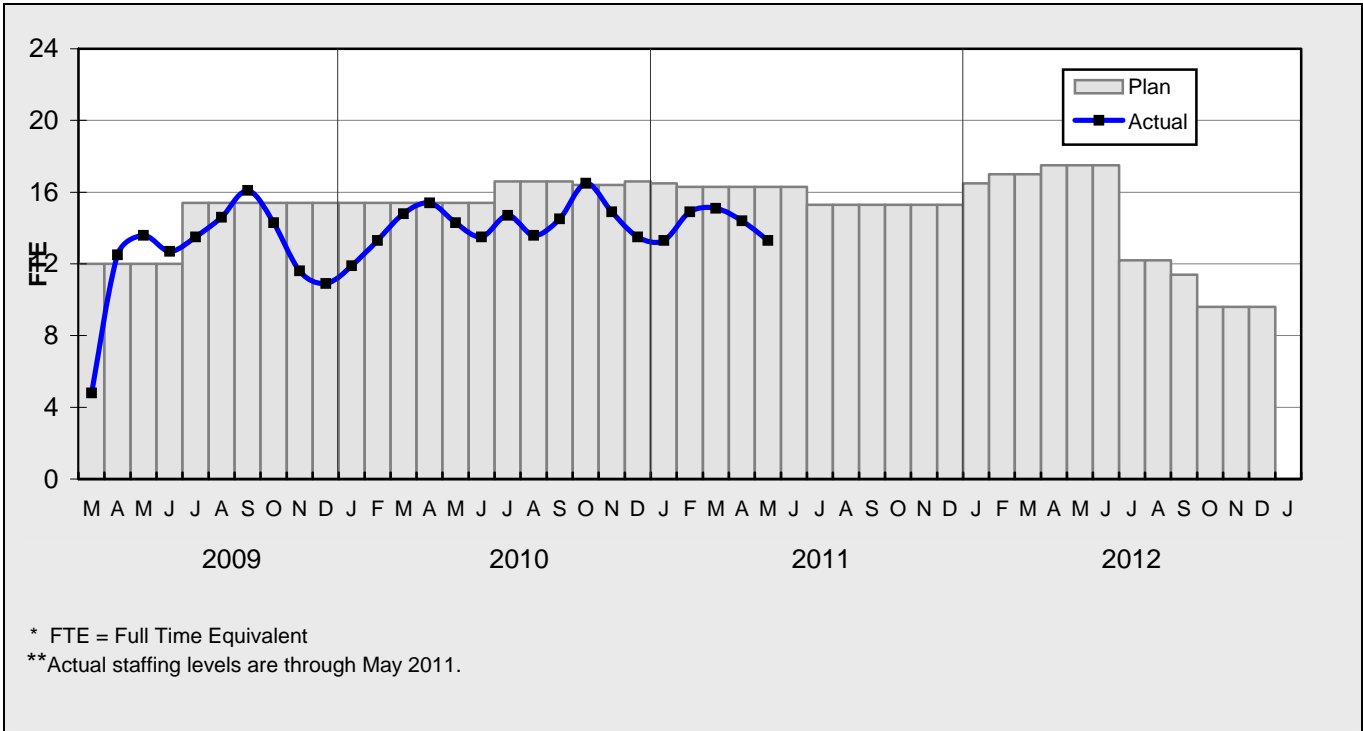
The overall FY11 Total Project Staffing plan averages 25.1 FTE's per month.

For May 2011, there were a total of 13.3 FTE's for MTA's Project Administration staff and 5.6 FTE's for consulting staff. The total project staffing was 18.9 FTE's for May 2011.

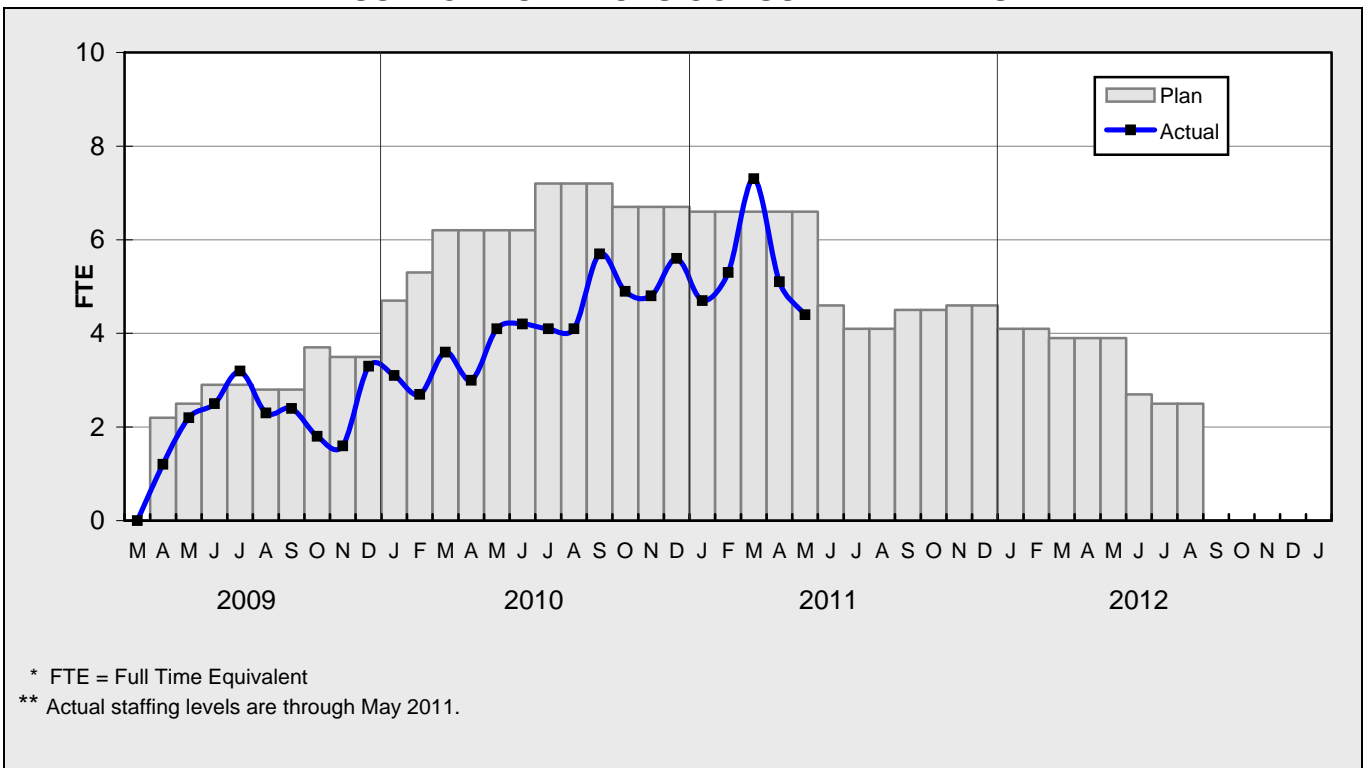
Staffing for the Central Maintenance Department's midlife overhaul of Orange Line buses are not included as an FTE but are included within the vehicle cost element (see Page 6 Element V).

**STAFFING STATUS**

MTA STAFFING - FTES

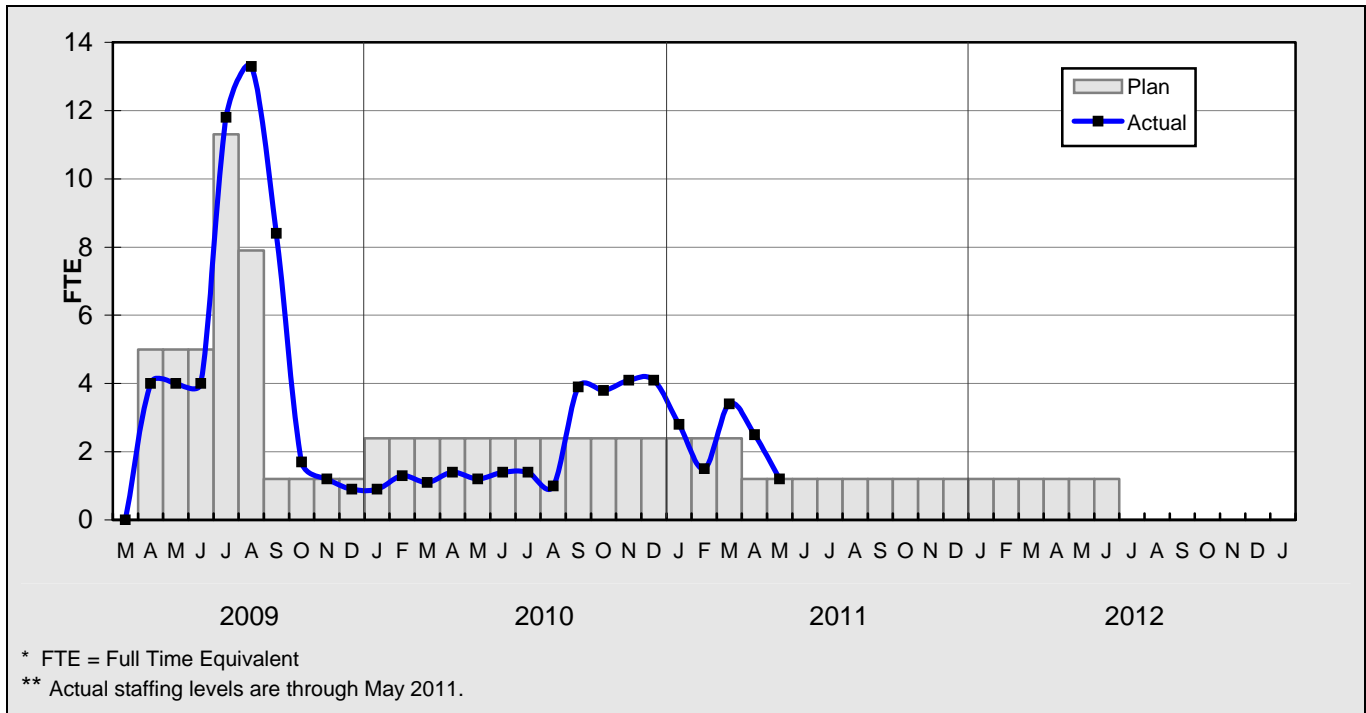


**CONSTRUCTION MANAGEMENT  
SUPPORT SERVICES CONSULTANT - FTES**



## STAFFING STATUS

### ENGINEERING SERVICES CONSULTANT



**REAL ESTATE STATUS**

- UPRR sent the license to LADWP for underground utilities across UPRR property on August 25, 2010 for approval. The License is being routed for City staff approval.
- MTA sent license to LADWP for the installation of underground utilities across MTA property. The License is being routed for City staff approval.
- Executed Road Easement Deed from Chatsworth Mobile Home Park owner has been forwarded to the City of Los Angeles for acceptance and recording.
- MTA is working with National Ready Mixed Services Company to relocate the boundry wall and reduce the size of the lease area.

**LEASES**

- All Real Estate work required to clear the ROW is completed.

	Total Leases	Total Leases to be Terminated	Total Leases to Remain with Modified Lease	Leases to Remain Under Existing Lease	Relocations Completed	Total Signboards Removed
Leases	82	78	3	1	52	26

**QUALITY ASSURANCE STATUS**

- Attended weekly job and readiness review meetings with Brutoco.
- Monitored the construction work along the alignment.

## **ENVIRONMENTAL STATUS**

- Continued air monitoring activities to monitor air quality during construction activities.
- Continued monitoring stormwater Best Management Practices (BMP's) to control stormwater flow from going off-site.
- Reviewing Standard Urban Stormwater Mitigation Plan (SUSMP).

## **COMMUNITY RELATIONS STATUS**

- Distributed 300 construction notices for construction safety door hangers, and 1,500 construction notices for nighttime concrete placement for the lower section of the Lassen Street Bridge.
- Participated in Readiness Review Meetings for CIDH piles, Busway Stations, asphalt paving along the alignment, retaining walls, installation of temporary traffic signals and temporary street lighting.
- Coordinated field visit between Project staff, Contractor and residents at Deering.
- Coordinated work activities regarding nighttime construction work in residential zone.

## **ART DEVELOPMENT STATUS**

- Released 40 RFPs for glass/stone mosaic paved ellipse fabrication.
- Released 30 RFPs for porcelain enamel steel art panel fabrication.

**SAFETY STATUS**

**CO943:**


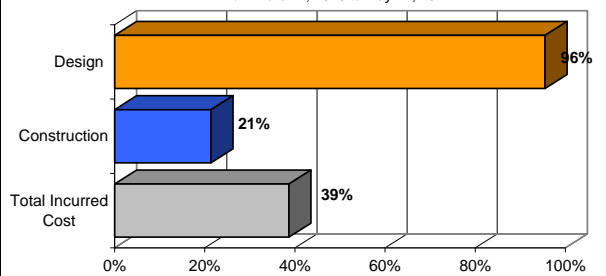
- Participated in weekly progress meetings with Construction Management and Contractor and Tool-box Safety Meetings to discuss safety and security related issues and future construction schedules.
- Participated in Contractor’s onsite monthly safety audit. Discrepancies were noted and corrected.
- Coordinated mandatory Metrolink Safety Training with MTA staff and Contractor personnel.
- Monitored construction activities on a daily basis including night-work to ensure safety compliance with contract specifications.
- Monitored night work on Lassen Street to ensure safety compliance specifications with Traffic Control Plan.
- Brutoco and their subcontractors reported one recordable incident and 15,145 work hours for the month of May 2011. Total project to date work hours are 112,945 and the incident rate is zero.

**THIRD PARTY AGREEMENT STATUS**

<b>Third Party</b>	<b>Type of Agreement</b>	<b>Forecast Execution Date</b>	<b>Required Need Date</b>	<b>Status/ Comments</b>
City of Los Angeles	Licensing Agreement	7/11	N/A	LADOT has agreed to continue reviewing design. In parallel, MTA shall work on identifying other options (hardscape in lieu of landscaping) that can lower the cost of maintenance for the City. Once design is agreed upon, that design will be incorporated into the agreement. Intent is to still have the City maintain the bike path and landscaping/hardscape outside the fenceline.
City of Los Angeles	O & M Agreement	7/11	N/A	MTA received comments back from LADOT that contradict the previous agreements. MTA shall meet with LADOT to resolve the issues.

**Note: For a list of all Third Party Agreements, that have been executed, please see the May 2010 Monthly Project Status Report.**

**CONTRACT C0943 STATUS**

<p><b>Design Builder Contractor:</b> Brutoco, Engineering and Construction, Inc.</p>	<p><b>Contract No.:</b> C0943 <b>Status as of:</b> May 27, 2011</p>																																								
<p><b>Progress/Work Completed:</b> MTA approved bikeway, LA River and Santa Susanna design, and remaining designs for the busway. City (BOE and LADOT) approved busway/bikeway design (DU-1 and DU-2). City (BOE) approved designs for seven intersections (DU-4 and DU-5). City (LADOT) approved some of the intersections design (part of DU-4). City (BSL) is reviewing bikeway/intersection lighting designs (DU-1, DU-2, DU-4 and DU-5). Design builder continues to recycle concrete and asphalt materials for use in base paving. Design builder started demo and curb and gutter work on Canoga Avenue (North of Prairie). Design builder started fabrication of MSE wall panels. Design builder started mock canopy fabrication. DWP started work on relocation of power poles at pinch point. Gas Company relocated gas line at Nordhoff Street.</p>	<p><b>Areas of Concern:</b> - See Management Issues page 2.</p>																																								
<p><b>Schedule Assessment:</b> The design builder's May Schedule Update to the approved Baseline Schedule continues to indicate potential delays in achieving future Contract Milestones. MTA has requested the design builder to submit a schedule mitigation plan and the design builder is late in providing this plan.  Note: The forecast dates for Contract Milestones shown in the table below are based on the May Schedule Update. MTA will reject this Update and will continue to work with the design builder to develop a revised schedule mitigation plan. MTA issued a change notice to delete interim milestone for Option C Scope of Work.</p>	<p><b>Cost Assessment:</b> The current construction contract cost forecast is \$83.93 million and is within the Board authorized budget.  The Design Builder submitted their 15th payment application in the approved amount of \$3.8 million.  Increase in costs to the construction contract award value are a result of design enhancements and change orders.</p>																																								
<p><b>Schedule Summary:</b></p> <table border="0"> <tr> <td>1. Date of Award:</td> <td>02/10/10</td> </tr> <tr> <td>2. Notice to Proceed:</td> <td>03/01/10</td> </tr> <tr> <td>3. Original Substantial Completion Duration:</td> <td>730</td> </tr> <tr> <td>4. Current Substantial Completion Duration:</td> <td>730</td> </tr> <tr> <td>5. Elapsed Time from NTP:</td> <td>452</td> </tr> </table>	1. Date of Award:	02/10/10	2. Notice to Proceed:	03/01/10	3. Original Substantial Completion Duration:	730	4. Current Substantial Completion Duration:	730	5. Elapsed Time from NTP:	452	<p><b>Cost Summary:</b></p> <table border="0"> <tr> <td></td> <td style="text-align: right;"><b>\$ In 000's</b></td> </tr> <tr> <td>1. Award Value:</td> <td style="text-align: right;">82.49</td> </tr> <tr> <td>2. Executed Modifications:</td> <td style="text-align: right;">1.40</td> </tr> <tr> <td>3. Approved Change Orders:</td> <td style="text-align: right;">0.04</td> </tr> <tr> <td>4. Current Contract Value (1 + 2 + 3):</td> <td style="text-align: right;">83.93</td> </tr> <tr> <td>5. Incurred Cost:</td> <td style="text-align: right;">32.45</td> </tr> </table>		<b>\$ In 000's</b>	1. Award Value:	82.49	2. Executed Modifications:	1.40	3. Approved Change Orders:	0.04	4. Current Contract Value (1 + 2 + 3):	83.93	5. Incurred Cost:	32.45																		
1. Date of Award:	02/10/10																																								
2. Notice to Proceed:	03/01/10																																								
3. Original Substantial Completion Duration:	730																																								
4. Current Substantial Completion Duration:	730																																								
5. Elapsed Time from NTP:	452																																								
	<b>\$ In 000's</b>																																								
1. Award Value:	82.49																																								
2. Executed Modifications:	1.40																																								
3. Approved Change Orders:	0.04																																								
4. Current Contract Value (1 + 2 + 3):	83.93																																								
5. Incurred Cost:	32.45																																								
<table border="1"> <thead> <tr> <th>Contract Milestones</th> <th>Original Contract</th> <th>Current Contract</th> <th>Forecast (see note above)</th> <th>Calendar Day Variance</th> </tr> </thead> <tbody> <tr> <td>Milestone 1 - Contract Substantial Completion</td> <td>02/29/12</td> <td>02/29/12</td> <td>10/03/12</td> <td>-217</td> </tr> <tr> <td>Milestone 2 - Complete Universal Fare System Requirements</td> <td>11/01/11</td> <td>11/01/11</td> <td>10/20/11</td> <td>12</td> </tr> <tr> <td>Milestone 3 - Elect/Communication Requirements Complete</td> <td>01/30/12</td> <td>01/30/12</td> <td>08/08/12</td> <td>-191</td> </tr> <tr> <td>Milestone 4 - Passenger Information System Testing Complete</td> <td>02/29/12</td> <td>02/29/12</td> <td>09/20/12</td> <td>-204</td> </tr> <tr> <td>Milestone 5 - System Assurance Complete</td> <td>02/28/13</td> <td>02/28/13</td> <td>09/30/13</td> <td>-214</td> </tr> <tr> <td>Milestone 6 - Landscape and Planting Maintenance and Warranty</td> <td>02/28/14</td> <td>02/28/14</td> <td>02/28/14</td> <td>0</td> </tr> <tr> <td>Option C - Undergrounding of DWP Power line at Lassen Street</td> <td>05/30/10</td> <td>05/30/10</td> <td>12/6/2010A</td> <td>-190</td> </tr> </tbody> </table>	Contract Milestones	Original Contract	Current Contract	Forecast (see note above)	Calendar Day Variance	Milestone 1 - Contract Substantial Completion	02/29/12	02/29/12	10/03/12	-217	Milestone 2 - Complete Universal Fare System Requirements	11/01/11	11/01/11	10/20/11	12	Milestone 3 - Elect/Communication Requirements Complete	01/30/12	01/30/12	08/08/12	-191	Milestone 4 - Passenger Information System Testing Complete	02/29/12	02/29/12	09/20/12	-204	Milestone 5 - System Assurance Complete	02/28/13	02/28/13	09/30/13	-214	Milestone 6 - Landscape and Planting Maintenance and Warranty	02/28/14	02/28/14	02/28/14	0	Option C - Undergrounding of DWP Power line at Lassen Street	05/30/10	05/30/10	12/6/2010A	-190	<p style="text-align: center;"><b>PERCENT COMPLETE</b> from March 1, 2010 to May 27, 2011</p>  <p style="text-align: center;"><b>Percent Complete Progress</b> Construction physical percent complete excludes mobilization and general requirements</p>
Contract Milestones	Original Contract	Current Contract	Forecast (see note above)	Calendar Day Variance																																					
Milestone 1 - Contract Substantial Completion	02/29/12	02/29/12	10/03/12	-217																																					
Milestone 2 - Complete Universal Fare System Requirements	11/01/11	11/01/11	10/20/11	12																																					
Milestone 3 - Elect/Communication Requirements Complete	01/30/12	01/30/12	08/08/12	-191																																					
Milestone 4 - Passenger Information System Testing Complete	02/29/12	02/29/12	09/20/12	-204																																					
Milestone 5 - System Assurance Complete	02/28/13	02/28/13	09/30/13	-214																																					
Milestone 6 - Landscape and Planting Maintenance and Warranty	02/28/14	02/28/14	02/28/14	0																																					
Option C - Undergrounding of DWP Power line at Lassen Street	05/30/10	05/30/10	12/6/2010A	-190																																					



## CONSTRUCTION PHOTOGRAPHS



C0943 Design Build Contractor works on piles and grade beams for Roscoe Station platform.