



# Metro Orange Line Extension

## MONTHLY PROJECT STATUS REPORT



## TABLE OF CONTENTS

|   | Page No. |
|---|----------|
| Project Overview.....                   | 1-2      |
| Management Issues.....                  | 2        |
| Project Status                          |          |
| • Project Scope.....                    | 3        |
| • Schedule                              |          |
| ○ Schedule Narrative .....              | 4        |
| ○ Summary Schedule.....                 | 5        |
| • Project Cost Status and Analysis..... | 6        |
| • Financial/Grant Status.....           | 7        |
| • Staffing.....                         | 8-10     |
| • Real Estate.....                      | 11       |
| • Quality Assurance.....                | 11       |
| • Environmental.....                    | 11       |
| • Community Relations.....              | 12       |
| • Art Development.....                  | 12       |
| • Safety.....                           | 13       |
| • Third Party.....                      | 13       |
| • Contract C0943 Status.....            | 14       |
| • Construction Photographs.....         | 15-17    |

## **PROJECT OVERVIEW**

*The Metro Orange Line (MOL) Extension Project is a four-mile extension of the Metro Orange Line extending from the Canoga park-and-ride lot to the Chatsworth Metrolink Station. The Project includes: busway, new station platforms at the Canoga park-and-ride lot, new stations at Sherman Way (with park-and-ride), Roscoe Boulevard, Nordhoff Street, and the Chatsworth Metrolink Station (with park-and-ride); grade-separation structure over active railroad tracks and Lassen Street (Lassen bridge) providing direct access into the Chatsworth Metrolink Station; Los Angeles River and Santa Susana Wash bridge crossings; and satellite bus parking facility. The project also includes street improvements, bicycle/pedestrian path, systems equipment and landscaping similar to the MOL.*

With the MTA Board adoption of the MOL Extension Project in January 2009, the Board directed staff to accelerate the completion of the Project to summer 2012.

Major Accomplishments to date:

- Constructed the north parking lot at Chatsworth station.
- Completed final design and obtained approvals of Lassen bridge.
- Relocated tracks and completed new rail signals (by Metrolink).
- Completed all real estate relocations and acquired easements from UP.
- Constructed Privacy Fence/walls adjacent to mobile homes.
- Demolished structures, removed vegetation, trees, and cleared the right of way.
- Removed known hazardous materials and contaminated soils.
- Substantially completed Lassen, LA River and Santa Susanna Bridges.
- Completed majority of street improvements at all busway crossings.
- Completed DWP and other utility relocations.
- Completed majority of busway, fencing and station platform/canopies.
- Commenced bus operator training and busway testing.

The design builder, Brutoco Engineering & Construction, Inc, started on March 1, 2010 and is responsible for the construction of the Lassen bridge and Lassen Street improvements as well as for the design and construction of the remaining Project scope of work. The design builder:

- Completed 99.9% of the final design.
- Continued landscape, irrigation and parking lot work, remaining station artwork, barriers and fence work.
- Commenced Lassen Street improvements and grading at Marilla bus parking lot.
- Continued remaining signal, signage and punch list work at street intersection.
- Continued rest room work at Chatsworth Station.
- Continued coordination with utility companies for relocations of power and communication lines, and other utility work at intersections.
- Continued with electrical and systems work at stations and at Busway Control Center.

## **PROJECT OVERVIEW (Contd)**

Other Project specific items required for revenue operations includes:

- Purchase and install fare collection equipment – The Contractor, Cubic Transportation Systems, Inc., has completed delivery of all equipment and commenced installation.
- Station Artwork – Continued coordination with design-builder regarding artwork installation.
- Vehicles – Metro Operations have completed forty-two 9200s buses required for the MOL Operations. Two additional back-up buses will be overhauled by the end of June and four are in queue to be finalized by August.
- Continue fabrication of additional signage at existing Canoga and Orange Line platforms.

To date, commitments are \$138.2 million or 64.1% of the Original Budget. Expenditures are \$112.6 million or 52.2% of the \$215.6 million Original Budget. Design-builder's final design percent complete is 99.9% and construction physical percent complete is 91.0%.

## **MANAGEMENT ISSUES**

**Concern No. 1:** DWP Power to complete remaining work.

**Status/Action** Working with DWP Power to complete removal of transformer which interferes with busway loop at Chatsworth. Working with the design builder and DWP to complete new power service for Chatsworth Stations, bikeway lighting and irrigation.

**Concern No. 2:** Design builder is showing delays in completion milestones.

**Status/Action** Metro continues to reject monthly updates to the approved baseline schedule and is working with the design builder to further mitigate milestone impacts. Metro is working towards an earlier opening of the busway and bikeway in June 2012.

**PROJECT SCOPE**



**C0943: Metro Orange Line Extension (MOL Ext)** is a design-build contract to construct the majority of the Project scope of work. This contract will include design and construction of busway, new stations at Sherman Way (with park-and-ride), Roscoe Boulevard, Nordhoff Street, and Chatsworth Metrolink Station (with park-and-ride). The existing MOL Canoga park-and-ride lot will be modified with new station platforms. In addition, the contractor will design and construct approaches to the Lassen bridge, a bridge over the Los Angeles River, a smaller bridge over the Santa Susana Wash, street improvements, bicycle/pedestrian path, satellite bus parking facility, landscaping, systems equipment, and system integration and testing. In August 2009, the Lassen bridge (500' long 3-span bridge over active railroad tracks/Lassen Street) and Lassen Street Improvements were added to Contract C0943.

**C0941: North Parking Lot (Chatsworth Station)** is a construction contract for a new parking lot to be constructed north of the existing Chatsworth Metrolink Station. Completion of this lot is required before the south parking lot is modified to ensure that parking is continuously available for Metrolink patrons during construction of the MOL Extension.

**Work Order – Advance Metrolink Rail Signal Modifications, Track Realignment, and At-Grade Lassen Crossing Enhancements** is to be substantially completed by Metrolink in advance of the Design-Build Contractor commencing construction of portions of the Lassen bridge.

**Work Order - Advance Relocation of power, fiber optic and communication lines on Lassen Street** is to be completed by LADWP and the affected utility companies prior to the Design-Build Contractor commencing construction of portions of the Lassen bridge.

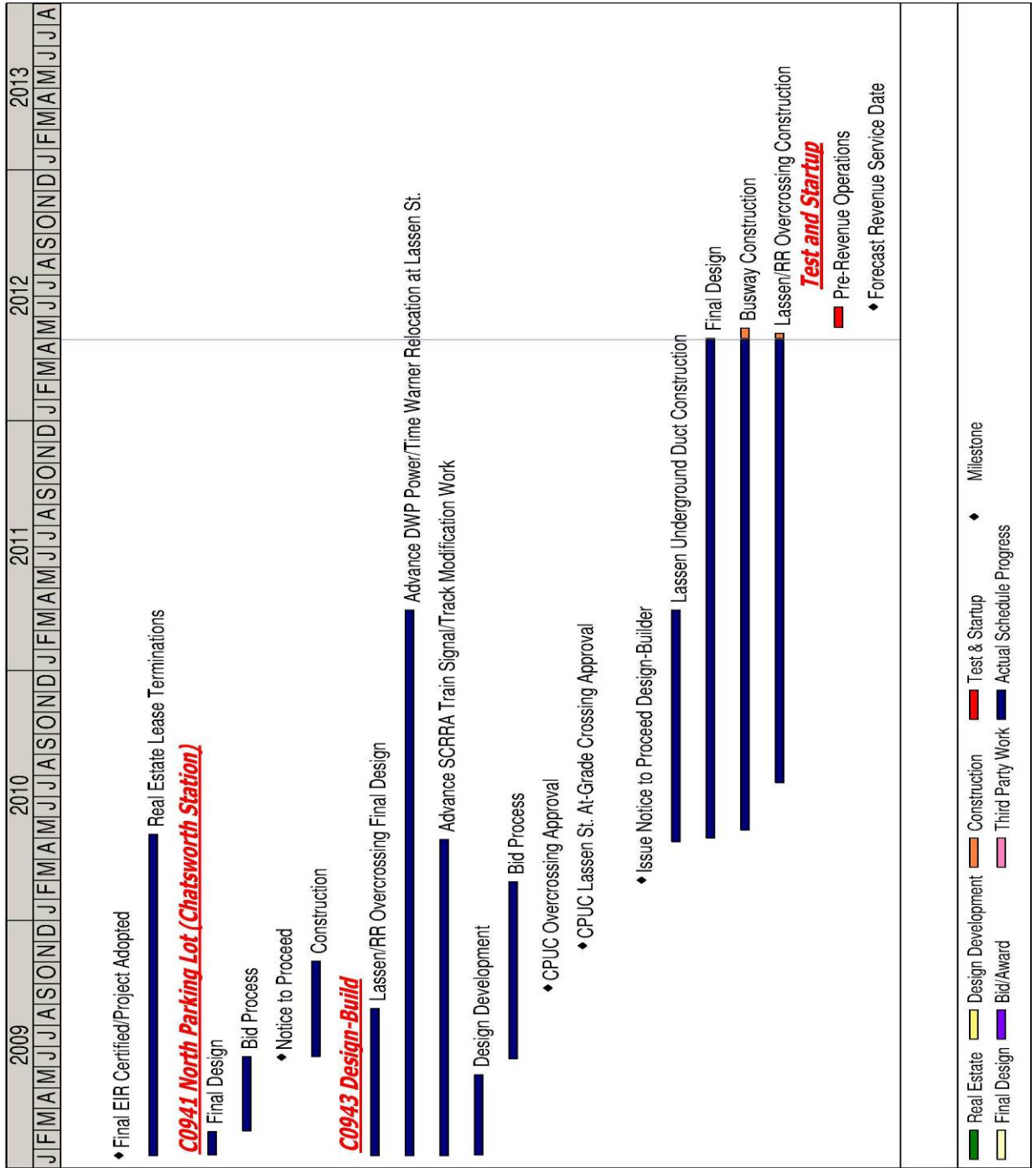
## **SCHEDULE NARRATIVE**

**Critical Path:**

The longest schedule path occurs with completing station construction, landscaping and critical systems installation and testing.

Bus testing and operator training has started and Metro is working towards a June 2012 opening.

**SUMMARY SCHEDULE**



**PROJECT COST STATUS - 800119**

**COST REPORT BY ELEMENT**

UNITS IN MILLIONS

| ELEMENT      | DESCRIPTION           | ORIGINAL BUDGET | CURRENT BUDGET |              | COMMITMENTS |              | EXPENDITURES |              | CURRENT FORECAST |              | FORECAST VARIANCE |
|--------------|-----------------------|-----------------|----------------|--------------|-------------|--------------|--------------|--------------|------------------|--------------|-------------------|
|              |                       |                 | PERIOD         | TO DATE      | PERIOD      | TO DATE      | PERIOD       | TO DATE      | PERIOD           | TO DATE      |                   |
| C            | CONSTRUCTION          | 137.3           | -              | 137.3        | 2.0         | 99.7         | 10.0         | 80.0         | -                | 109.5        | (27.8)            |
| R            | RIGHT-OF-WAY          | 8.0             | -              | 8.0          | -           | 2.2          | -            | 2.2          | -                | 3.2          | (4.8)             |
| V            | VEHICLES / BUSES      | 9.9             | -              | 9.9          | -           | 9.9          | 0.4          | 7.9          | -                | 9.9          | -                 |
| P            | PROFESSIONAL SERVICES | 38.7            | -              | 38.7         | -           | 26.4         | 0.6          | 22.5         | -                | 29.0         | (9.7)             |
| PC           | PROJECT CONTINGENCY   | 21.7            | -              | 21.7         | -           | -            | -            | -            | -                | 28.4         | 6.7               |
| PB           | PROJECT RESERVE       | -               | -              | -            | -           | -            | -            | -            | -                | -            | -                 |
| PR           | PROJECT REVENUE       | -               | -              | -            | -           | -            | -            | -            | -                | -            | -                 |
| <b>TOTAL</b> |                       | <b>215.6</b>    | <b>-</b>       | <b>215.6</b> | <b>2.0</b>  | <b>138.2</b> | <b>11.0</b>  | <b>112.6</b> | <b>-</b>         | <b>180.0</b> | <b>(35.6)</b>     |

NOTE: EXPENDITURES ARE CUMULATIVE THROUGH MARCH 2012.

**PROJECT COST ANALYSIS**

**Original Budget and Current Budget:**

The Life of Project Budget for the Metro Orange Line Extension Project construction effort was adopted in January 2009 for a value of \$215.6 million. This amount does not include the prior planning and environmental development costs of \$5.6 million. The current budget remains the same.

**Current Forecast:** The total project forecast was reduced to \$180.0 million. Will continue to evaluate overall cost exposure to ascertain if additional savings can be achieved as project nears completion.

**Commitments:**

The commitments are cumulative through April 2012. In the Construction element there was an increase of \$2.0 million primarily for executed contract modifications associated with the Design-Build Contract C0943, third party scope of work with the Los Angeles City Department of Water and Power, and Qwest. The \$138.2 million in commitments to date represents 64.1% of the current budget.

**Expenditures:**

The expenditures are cumulative through March 2012. The expenditures increased by \$11.0 million this period. In the Construction element there was an increase of \$10.0 million for cost associated with the Design-Build Contract C0943, third party scope of work with the City of Los Angeles, and Universal Fare System. In the Vehicle element there was an increase of \$0.4 million for midlife overhaul of existing Orange Line buses. In the Professional Services element there was an increase of \$0.6 million for costs associated with final design, construction management support, community outreach program, legal services, and MTA project administration. The \$112.6 million in expenditures to date represents 52.2% of the current budget. The design-builder's total incurred cost to date is \$79.9 million versus \$86.8 million authorized or 92%.



**FINANCIAL/GRANT STATUS  
Project 800119 – Metro Orange Line Extension**

**APRIL 2012**

**STATUS OF FUNDS BY SOURCE**

\$ in millions

| SOURCE                 | (A)          | (B)          | (C)          | (D)          | (D/B)        | (E)          | (E/B)        | (F)               | (F/B)      |
|------------------------|--------------|--------------|--------------|--------------|--------------|--------------|--------------|-------------------|------------|
|                        | ORIGINAL     | TOTAL        | TOTAL        | COMMITMENTS  |              | EXPENDITURES |              | BILLED to FUNDING |            |
|                        | BUDGET       | FUNDS        | FUNDS        | \$           | %            | \$           | %            | SOURCE            | %          |
|                        | (1)          | (2)          | AVAILABLE    |              |              |              |              |                   |            |
| PROP 1B FUNDS-PTMISEA* | 68.0         | 70.0         | 70.0         | 70.0         | 100%         | 70.0         | 100%         | 70.0              | 100%       |
| PROP 1B FUNDS-SLTPP**  | 73.8         | 72.8         | 62.7         | 34.1         | 47%          | 21.3         | 29%          | 14.8              | 20%        |
| PROP C 25%             | 73.8         | 72.8         | 38.0         | 34.1         | 47%          | 21.3         | 29%          | 14.8              | 20%        |
| <b>TOTAL</b>           | <b>215.6</b> | <b>215.6</b> | <b>170.7</b> | <b>138.2</b> | <b>64.1%</b> | <b>112.6</b> | <b>52.2%</b> | <b>99.6</b>       | <b>46%</b> |

(1) Based on January 2009 MTA Board adoption of Life of Project (LOP) Budget. LOP Budget doesn't include planning and environmental costs.

(2) Based on August 2011 Capital Programming Revised Financial Plan.

\* PTMISEA: Public Transportation Modernization and Improvement Surface Enhancement Account

\*\* SLTPP: State - Local Transportation Partnership Program

NOTE: Expenditures are cumulative through March 2012.

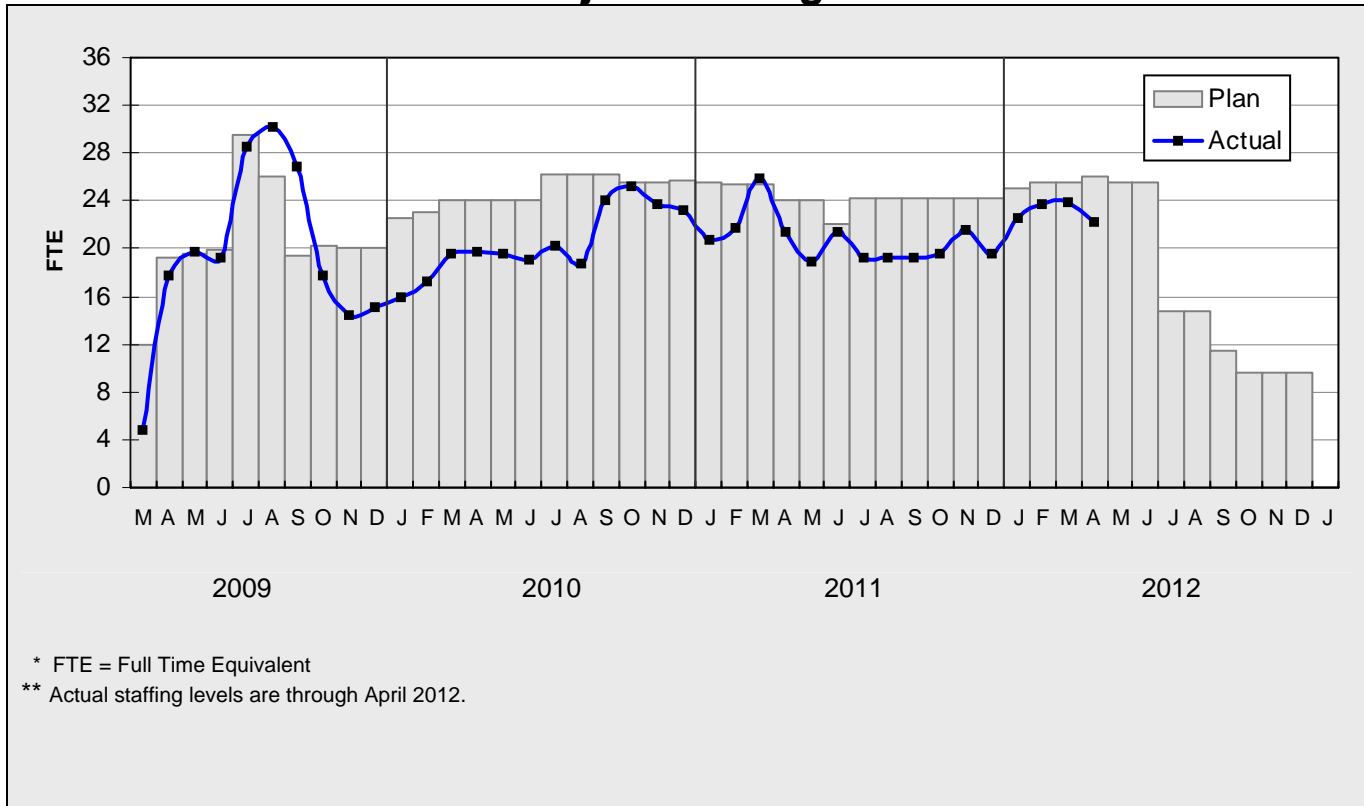
**STATUS OF FUNDS ANTICIPATED**

**STATE PROP 1B – PTMISEA:** MTA submitted a request to Caltrans to allocate \$29.5 million of FY10 funds to the Project. The allocation request was approved in October 2011. Funds are available for drawdown.

**STATE PROP 1B – SLTPP:** At the January 2011 Meeting, the CTC approved MTA's December 2009 \$14.7M and May 2010 \$34.5M allocation requests. Both Grants are available for drawdown. At the October 2011 CTC Meeting, MTA's \$13.5 million allocation request was approved. The grant is available for drawdown.

**PROP C 25%:** Metro FY11 Funding Matrix earmarks \$38M of Prop C 25% Streets and Highways Funds for this project.

**STAFFING STATUS  
Total Project Staffing - FTES**



**Total Project Staffing**

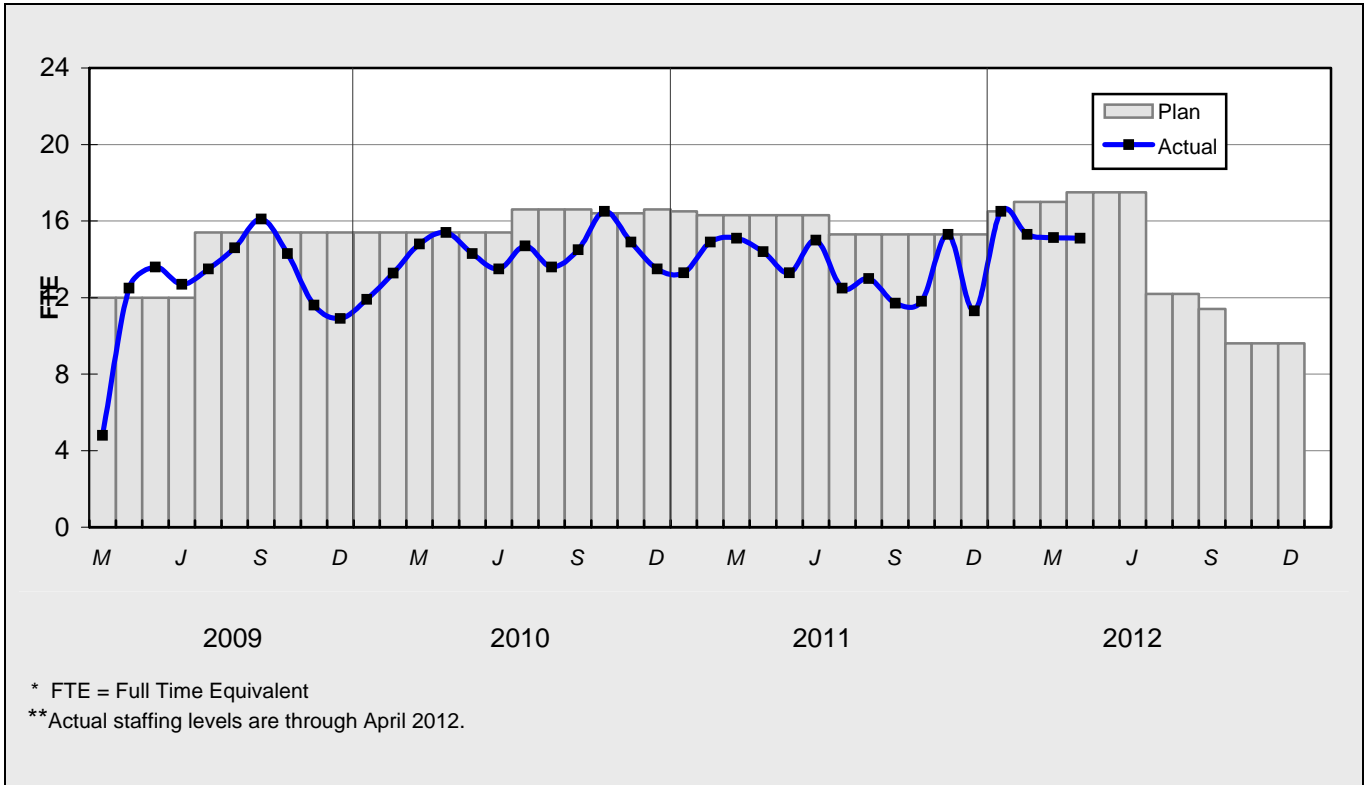
The overall FY12 Total Project Staffing plan averages 24.9 FTE's per month.

For April 2012, there were a total of 15.1 FTE's for MTA's Project Administration staff and 7.2 FTE's for consulting staff. The total project staffing was 22.3 FTE's for April 2012.

Staffing for the Central Maintenance Department's midlife overhaul of Orange Line buses are not included as an FTE but are included within the vehicle cost element (see Page 6 Element V).

**STAFFING STATUS**

**MTA STAFFING - FTES**

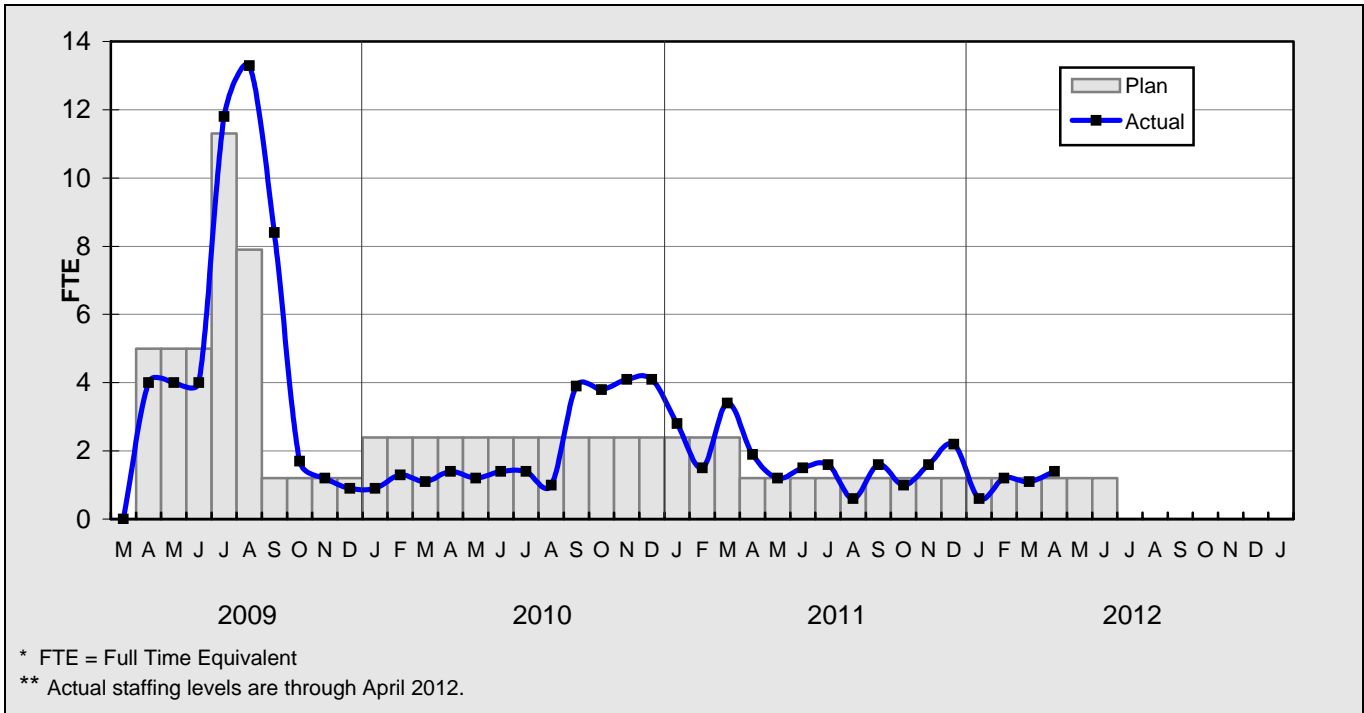


**CONSTRUCTION MANAGEMENT  
SUPPORT SERVICES CONSULTANT - FTES**



## STAFFING STATUS

### ENGINEERING SERVICES CONSULTANT



**REAL ESTATE STATUS**

**LEASES**

- Real Estate is working with Jacobi to coordinate the relocation of a portion of the boundry wall on MTA and City property.
- Jacobi is working with the City to obtain the approval to use City property and waiting for construction activities to be completed before relocating boundry wall.
- The CEO has approved a Settlement Agreement and Release with CBS Outdoor, Inc. for compensation for the termination and removal of twenty-four (24) outdoor advertising billboards.

|        | Total Leases | Total Leases to be Terminated | Total Leases to Remain with Modified Lease | Leases to Remain Under Existing Lease | Relocations Completed | Total Signboards Removed |
|--------|--------------|-------------------------------|--|---------------------------------------|-----------------------|--------------------------|
| Leases | 82           | 78                            | 3  | 1                                     | 52                    | 26                       |

**QUALITY ASSURANCE STATUS**

- Attended weekly job and readiness review meetings with Brutoco.
- Monitored the construction work along the alignment.

**ENVIRONMENTAL STATUS**

- Brutoco continues to maintain BMPs for track out control and AQMD compliance.
- Metro and Gruen Associates monitored the planting of trees and scrubs along the alignment.
- Reviewed the submittal of the SUSMP for the Marilla parking Lot.
- A Killdeer nest was discovered at the Canoga Station site. The CDFG was contacted to remove the nest as this bird is a protected species.

## **COMMUNITY RELATIONS STATUS**

- Distributed 20,500 construction notices for full street closure/grind and cap pave of Sherman Way/Canoga Avenue, 7,000 for duct bank installation on Marilla and across Owensmouth Avenue, 40,500 for busway testing and 1,500 for the paving of Canoga Avenue as part of Los Angeles Bureau of Street Services Project.
- Coordinated the power shutdown for the Chatsworth Metrolink Station.
- Coordinated graffiti abatement along the Metro right-of-way and removal of the Project fence to allow access to paint the rear of building at Central Car Sales.
- Conducted field visit with business owners/managers of the IR Cabinet Shop, Valley Electric, Canoga Park Pet Fund Adoption and MJB Precision Sheet Metal, Canoga Shell Station and ACME.

## **ART DEVELOPMENT STATUS**

- Achieved 75% completion of mosaic artwork installation at Nordhoff and Chatsworth Station.
- Achieved 25% completion of mosaic artwork installation at Canoga Station.

**SAFETY STATUS**

**CO943:**


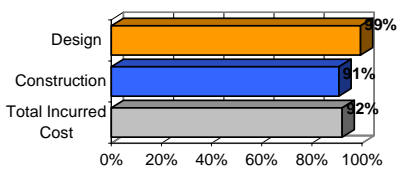
- Participated in weekly progress and Tool-box Safety Meetings and conducted onsite monthly safety audit/reviews and deficiencies were observed and corrected immediately.
- Monitored construction activities on a daily basis including weekends to ensure safety compliance with contract specifications.
- Brutoco and their subcontractors reported zero incidents and 22,417 work hours for the month of April 2012. Total project to date work hours are 392,180 and six recordable incidents. The recordable incident rate is 3.0. The National Average is 3.8.

**THIRD PARTY AGREEMENT STATUS**

| <b>Third Party</b>  | <b>Type of Agreement</b>               | <b>Forecast Execution Date</b> | <b>Required Need Date</b> | <b>Status/ Comments</b>  |
|---------------------|--|--------------------------------|---------------------------|--|
| City of Los Angeles | Licensing Agreement                    | 5/12                           | N/A                       | MTA will include a revised Exhibit showing the maintenance areas and exclusions based on approved design and submit the agreement for final review and approval. |
| City of Los Angeles | O & M Agreement For Chatsworth Station | 6/12                           | N/A                       | MTA and DOT to meet and finalize the agreement.  |

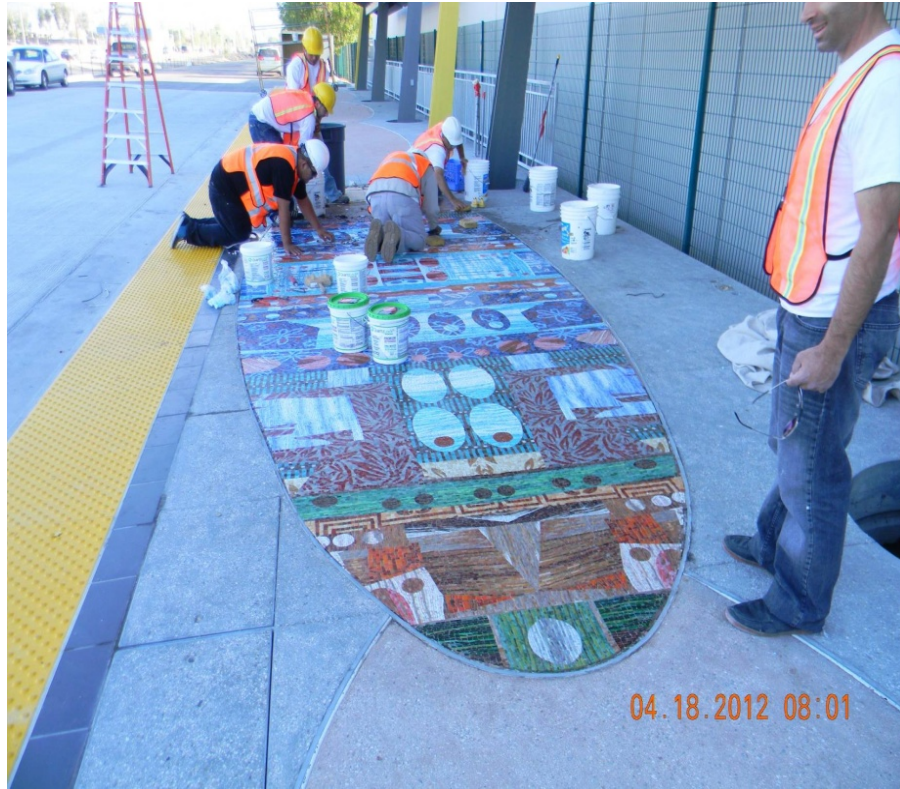
**Note: For a list of all Third Party Agreements, that have been executed, please see the May 2010 Monthly Project Status Report.**

**CONTRACT C0943 STATUS**

| <p><b>Design Builder Contractor:</b><br/>Brutoco, Engineering and Construction, Inc.</p>   | <p><b>Contract No.:</b> C0943<br/><b>Status as of:</b> April 27, 2012</p>   |  |                           |                           |  |   |   |          |                           |     |   |          |                 |             |                            |   |                            |          |  |       |   |          |          |          |    |   |          |          |          |     |   |          |          |          |     |  |          |          |             |      |   |  |
|--|---|---|---------------------------|---------------------------|--|---|---|----------|---------------------------|-----|---|----------|-----------------|-------------|----------------------------|---|----------------------------|----------|--|-------|---|----------|----------|----------|----|---|----------|----------|----------|-----|---|----------|----------|----------|-----|--|----------|----------|-------------|------|---|--|
| <p>Progress/Work Completed (in addition to progress shown on p.2):</p> <ul style="list-style-type: none"> <li>- Completed final cap paving of busway and striping.</li> <li>- Completed ornamental fencing installation in all segments.</li> <li>- Completed all station electrical and communication wire pulls.</li> </ul> <p>Issued for construction:<br/>Parthenia Temp Drawings, Sherman Transit Plaza, LA River Drainage and Roscoe Ped Walkway Lighting Plan.</p>  | <p><b>Areas of Concern:</b><br/>- See Management Issues page 2.</p>   |   |                           |                           |  |   |   |          |                           |     |   |          |                 |             |                            |   |                            |          |  |       |   |          |          |          |    |   |          |          |          |     |   |          |          |          |     |  |          |          |             |      |   |  |
| <p><b>Schedule Assessment:</b><br/>The forecast dates for Contract Milestones shown in the table below are based on the current April12 Schedule Update. MTA will reject this Update and continue to work with the design builder to develop a revised schedule mitigation plan for revenue operations to commence in June 2012.</p>   | <p><b>Cost Assessment:</b><br/>The current construction contract cost forecast is \$86.83 million and is within the Board authorized budget.</p> <p>The Design Builder submitted their 26th payment application in the approved amount of \$2.7 million.</p> <p>Increase in costs to the construction contract award value are a result of design enhancements and change orders.</p> |   |                           |                           |  |   |   |          |                           |     |   |          |                 |             |                            |   |                            |          |  |       |   |          |          |          |    |   |          |          |          |     |   |          |          |          |     |  |          |          |             |      |   |  |
| <p><b>Schedule Summary:</b></p> <table border="0"> <tr> <td>1. Date of Award:</td> <td>02/10/10</td> </tr> <tr> <td>2. Notice to Proceed:</td> <td>03/01/10</td> </tr> <tr> <td>3. Original Substantial Completion Duration:</td> <td>730</td> </tr> <tr> <td>4. Current Substantial Completion Duration:</td> <td>837</td> </tr> <tr> <td>5. Elapsed Time from NTP:</td> <td>788</td> </tr> </table>  | 1. Date of Award:   | 02/10/10  | 2. Notice to Proceed:     | 03/01/10                  | 3. Original Substantial Completion Duration: | 730   | 4. Current Substantial Completion Duration: | 837      | 5. Elapsed Time from NTP: | 788 | <p><b>Cost Summary:</b> <span style="float: right;"><b>\$ In 000's</b></span></p> <table border="0"> <tr> <td>1. Award Value:</td> <td>82.49</td> </tr> <tr> <td>2. Executed Modifications:</td> <td>3.96</td> </tr> <tr> <td>3. Approved Change Orders:</td> <td>0.38</td> </tr> <tr> <td>4. Current Contract Value (1 + 2 + 3):</td> <td>86.83</td> </tr> <tr> <td>5. Incurred Cost:</td> <td>79.87</td> </tr> </table> |          | 1. Award Value: | 82.49       | 2. Executed Modifications: | 3.96  | 3. Approved Change Orders: | 0.38     | 4. Current Contract Value (1 + 2 + 3): | 86.83 | 5. Incurred Cost:   | 79.87    |          |          |    |   |          |          |          |     |   |          |          |          |     |  |          |          |             |      |   |  |
| 1. Date of Award:  | 02/10/10  |   |                           |                           |  |   |   |          |                           |     |   |          |                 |             |                            |   |                            |          |  |       |   |          |          |          |    |   |          |          |          |     |   |          |          |          |     |  |          |          |             |      |   |  |
| 2. Notice to Proceed:  | 03/01/10  |   |                           |                           |  |   |   |          |                           |     |   |          |                 |             |                            |   |                            |          |  |       |   |          |          |          |    |   |          |          |          |     |   |          |          |          |     |  |          |          |             |      |   |  |
| 3. Original Substantial Completion Duration:   | 730   |   |                           |                           |  |   |   |          |                           |     |   |          |                 |             |                            |   |                            |          |  |       |   |          |          |          |    |   |          |          |          |     |   |          |          |          |     |  |          |          |             |      |   |  |
| 4. Current Substantial Completion Duration:  | 837   |   |                           |                           |  |   |   |          |                           |     |   |          |                 |             |                            |   |                            |          |  |       |   |          |          |          |    |   |          |          |          |     |   |          |          |          |     |  |          |          |             |      |   |  |
| 5. Elapsed Time from NTP:  | 788   |   |                           |                           |  |   |   |          |                           |     |   |          |                 |             |                            |   |                            |          |  |       |   |          |          |          |    |   |          |          |          |     |   |          |          |          |     |  |          |          |             |      |   |  |
| 1. Award Value:  | 82.49   |   |                           |                           |  |   |   |          |                           |     |   |          |                 |             |                            |   |                            |          |  |       |   |          |          |          |    |   |          |          |          |     |   |          |          |          |     |  |          |          |             |      |   |  |
| 2. Executed Modifications:   | 3.96  |   |                           |                           |  |   |   |          |                           |     |   |          |                 |             |                            |   |                            |          |  |       |   |          |          |          |    |   |          |          |          |     |   |          |          |          |     |  |          |          |             |      |   |  |
| 3. Approved Change Orders:   | 0.38  |   |                           |                           |  |   |   |          |                           |     |   |          |                 |             |                            |   |                            |          |  |       |   |          |          |          |    |   |          |          |          |     |   |          |          |          |     |  |          |          |             |      |   |  |
| 4. Current Contract Value (1 + 2 + 3):   | 86.83   |   |                           |                           |  |   |   |          |                           |     |   |          |                 |             |                            |   |                            |          |  |       |   |          |          |          |    |   |          |          |          |     |   |          |          |          |     |  |          |          |             |      |   |  |
| 5. Incurred Cost:  | 79.87   |   |                           |                           |  |   |   |          |                           |     |   |          |                 |             |                            |   |                            |          |  |       |   |          |          |          |    |   |          |          |          |     |   |          |          |          |     |  |          |          |             |      |   |  |
| <table border="1"> <thead> <tr> <th>Contract Milestones</th> <th>Original Contract</th> <th>Current Contract</th> <th>Forecast (see note above)</th> <th>Calendar Day Variance</th> </tr> </thead> <tbody> <tr> <td>Milestone 1 - Contract Substantial Completion</td> <td>02/29/12</td> <td>06/01/12</td> <td>06/22/12</td> <td>-21</td> </tr> <tr> <td>Milestone 2 - Complete Universal Fare System Requirements</td> <td>11/01/11</td> <td>04/01/12</td> <td>4/24/2012 A</td> <td>-16</td> </tr> <tr> <td>Milestone 3 - Elect/Communication Requirements Complete</td> <td>01/30/12</td> <td>05/21/12</td> <td>06/04/12</td> <td>-14</td> </tr> <tr> <td>Milestone 4 - Passenger Information System Testing Complete</td> <td>02/29/12</td> <td>05/21/12</td> <td>05/30/12</td> <td>-9</td> </tr> <tr> <td>Milestone 5 - System Assurance Complete</td> <td>02/28/13</td> <td>04/15/13</td> <td>04/30/13</td> <td>-15</td> </tr> <tr> <td>Milestone 6 - Landscape and Planting Maintenance and Warranty</td> <td>02/28/14</td> <td>04/15/14</td> <td>05/09/14</td> <td>-24</td> </tr> <tr> <td>Option C - Undergrounding of DWP Power line at Lassen Street</td> <td>05/30/10</td> <td>05/30/10</td> <td>12/6/2010 A</td> <td>-190</td> </tr> </tbody> </table> | Contract Milestones   | Original Contract   | Current Contract          | Forecast (see note above) | Calendar Day Variance                        | Milestone 1 - Contract Substantial Completion | 02/29/12                                    | 06/01/12 | 06/22/12                  | -21 | Milestone 2 - Complete Universal Fare System Requirements   | 11/01/11 | 04/01/12        | 4/24/2012 A | -16                        | Milestone 3 - Elect/Communication Requirements Complete | 01/30/12                   | 05/21/12 | 06/04/12                               | -14   | Milestone 4 - Passenger Information System Testing Complete | 02/29/12 | 05/21/12 | 05/30/12 | -9 | Milestone 5 - System Assurance Complete | 02/28/13 | 04/15/13 | 04/30/13 | -15 | Milestone 6 - Landscape and Planting Maintenance and Warranty | 02/28/14 | 04/15/14 | 05/09/14 | -24 | Option C - Undergrounding of DWP Power line at Lassen Street | 05/30/10 | 05/30/10 | 12/6/2010 A | -190 | <p><b>PERCENT COMPLETE</b><br/><i>from March 1, 2010 to April 27, 2012</i></p>  <p><b>Percent Complete Progress</b></p> <p><i>Construction physical percent complete excludes mobilization and general requirements</i></p> |  |
| Contract Milestones  | Original Contract   | Current Contract  | Forecast (see note above) | Calendar Day Variance     |  |   |   |          |                           |     |   |          |                 |             |                            |   |                            |          |  |       |   |          |          |          |    |   |          |          |          |     |   |          |          |          |     |  |          |          |             |      |   |  |
| Milestone 1 - Contract Substantial Completion  | 02/29/12  | 06/01/12  | 06/22/12                  | -21                       |  |   |   |          |                           |     |   |          |                 |             |                            |   |                            |          |  |       |   |          |          |          |    |   |          |          |          |     |   |          |          |          |     |  |          |          |             |      |   |  |
| Milestone 2 - Complete Universal Fare System Requirements  | 11/01/11  | 04/01/12  | 4/24/2012 A               | -16                       |  |   |   |          |                           |     |   |          |                 |             |                            |   |                            |          |  |       |   |          |          |          |    |   |          |          |          |     |   |          |          |          |     |  |          |          |             |      |   |  |
| Milestone 3 - Elect/Communication Requirements Complete  | 01/30/12  | 05/21/12  | 06/04/12                  | -14                       |  |   |   |          |                           |     |   |          |                 |             |                            |   |                            |          |  |       |   |          |          |          |    |   |          |          |          |     |   |          |          |          |     |  |          |          |             |      |   |  |
| Milestone 4 - Passenger Information System Testing Complete  | 02/29/12  | 05/21/12  | 05/30/12                  | -9                        |  |   |   |          |                           |     |   |          |                 |             |                            |   |                            |          |  |       |   |          |          |          |    |   |          |          |          |     |   |          |          |          |     |  |          |          |             |      |   |  |
| Milestone 5 - System Assurance Complete  | 02/28/13  | 04/15/13  | 04/30/13                  | -15                       |  |   |   |          |                           |     |   |          |                 |             |                            |   |                            |          |  |       |   |          |          |          |    |   |          |          |          |     |   |          |          |          |     |  |          |          |             |      |   |  |
| Milestone 6 - Landscape and Planting Maintenance and Warranty  | 02/28/14  | 04/15/14  | 05/09/14                  | -24                       |  |   |   |          |                           |     |   |          |                 |             |                            |   |                            |          |  |       |   |          |          |          |    |   |          |          |          |     |   |          |          |          |     |  |          |          |             |      |   |  |
| Option C - Undergrounding of DWP Power line at Lassen Street   | 05/30/10  | 05/30/10  | 12/6/2010 A               | -190                      |  |   |   |          |                           |     |   |          |                 |             |                            |   |                            |          |  |       |   |          |          |          |    |   |          |          |          |     |   |          |          |          |     |  |          |          |             |      |   |  |



**CONSTRUCTION PHOTOGRAPHS**



Mosaic at Nordoff Station.



Paving at Chatsworth Station.

**CONSTRUCTION PHOTOGRAPHS**



Bus testing over Lassen Bridge.



Bus testing from Lassen Bridge entering Chatsworth Station.

**CONSTRUCTION PHOTOGRAPHS**



Bus testing at Chatsworth Station.



Bus testing on alignment.