



# Metro Orange Line Extension

## MONTHLY PROJECT STATUS REPORT



## TABLE OF CONTENTS

	Page No.
Project Overview.....	1-2
Management Issues.....	2
Project Status	
• Project Scope.....	3
• Schedule	
○ Schedule Narrative .....	4
○ Summary Schedule.....	5
• Project Cost Status and Analysis.....	6
• Financial/Grant Status.....	7
• Staffing.....	8-10
• Real Estate.....	11
• Quality Assurance.....	11
• Environmental.....	11
• Community Relations.....	12
• Art Development.....	12
• Safety.....	13
• Third Party.....	13
• Contract C0943 Status.....	14

## **PROJECT OVERVIEW**

*The Metro Orange Line (MOL) Extension Project is a four-mile extension of the Metro Orange Line extending from the Canoga park-and-ride lot to the Chatsworth Metrolink Station. The Project includes: busway, new station platforms at the Canoga park-and-ride lot, new stations at Sherman Way (with park-and-ride), Roscoe Boulevard, Nordhoff Street, and the Chatsworth Metrolink Station (with park-and-ride); grade-separation structure over active railroad tracks and Lassen Street (Lassen bridge) providing direct access into the Chatsworth Metrolink Station; Los Angeles River and Santa Susana Wash bridge crossings; and satellite bus parking facility. The project also includes street improvements, bicycle/pedestrian path, systems equipment and landscaping similar to the MOL.*

With the MTA Board adoption of the MOL Extension Project in January 2009, the Board directed staff to accelerate the completion of the Project to summer 2012.

Major Accomplishments to date:

- Constructed the north parking lot at Chatsworth station.
- Completed final design and obtained approvals of Lassen bridge.
- Relocated tracks and completed new rail signals (by Metrolink).
- Completed all real estate relocations and acquired easements from UP.
- Constructed Privacy Fence/walls adjacent to mobile homes.
- Demolished structures, removed vegetation and trees, and cleared the right of way.
- Removed known hazardous materials and contaminated soils.
- Substantially completed Lassen Bridge, LA River Bridge and Santa Susanna Bridge. Completed MSE walls north of Lassen Bridge. Completed MSE walls and architectural feature at Lassen Bridge.
- Completed sewer encasement protection at Saticoy intersection.
- Completed DWP and other utility relocations at Lassen Street, pinch point and all intersections except Sherman Way.

The design builder, Brutoco Engineering & Construction, Inc, started on March 1, 2010 and is responsible for the construction of the Lassen bridge and Lassen Street improvements as well as for the design and construction of the remaining Project scope of work. The design builder:

- Completed 99.7% of the final design.
- Continued grading, base paving, storm drain, stations, communication ductbank, electrical, fencing and landscape irrigation work along the busway.
- Continued barrier slab on MSE walls (south approach to Lassen Bridge).
- Continued installation of canopies and other work at stations.
- Continued construction of street intersection work and bikeway.
- Continued rest room work at Chatsworth Station.
- Continued coordination with utility companies for relocations of power and communication lines, and other utility work at intersections.
- Continued with procurement of electrical, communications and other systems equipment.

## **PROJECT OVERVIEW (Contd)**

Other Project specific items required for revenue operations includes:

- Purchase and install fare collection equipment – The Contractor, Cubic Transportation Systems, Inc., has completed delivery of all equipment and is in storage pending installation in the near future.
- Station Artwork – All mosaic artwork for Canoga and Nordoff Stations delivered to jobsite.
- Vehicles – Operations (Central Maintenance Department) have completed mid-life overhauls on 35 buses designated for the Orange Line and five additional buses are scheduled to be completed by the end of March 2012. An additional eight buses are in the queue to be finalized by June 2012.
- Procure additional signage at existing Canoga and Orange Line platforms.

To date, commitments are \$136.7 million or 63.4% of the Original Budget. Expenditures are \$100.5 million or 46.6% of the \$215.6 million Original Budget. Design-builder's final design percent complete is 99.7% and construction physical percent complete is 86.7%.

## **MANAGEMENT ISSUES**

**Concern No. 1:** DWP Power to complete remaining work.

**Status/Action** Working with DWP Power to complete relocation of power poles at Sherman Way and removal of transformer which interferes with busway loop at Chatsworth. Working with the design builder and DWP to complete new power service for stations, bikeway lighting and irrigation.

**Concern No. 2:** Design builder is showing delays in completion milestones.

**Status/Action** Metro continues to reject monthly updates to the approved baseline schedule and is working with the design builder to further mitigate milestone impacts. Metro is working towards an earlier opening of the busway and bikeway in June 2012.

**PROJECT SCOPE**



**C0943: Metro Orange Line Extension (MOL Ext)** is a design-build contract to construct the majority of the Project scope of work. This contract will include design and construction of busway, new stations at Sherman Way (with park-and-ride), Roscoe Boulevard, Nordhoff Street, and Chatsworth Metrolink Station (with park-and-ride). The existing MOL Canoga park-and-ride lot will be modified with new station platforms. In addition, the contractor will design and construct approaches to the Lassen bridge, a bridge over the Los Angeles River, a smaller bridge over the Santa Susana Wash, street improvements, bicycle/pedestrian path, satellite bus parking facility, landscaping, systems equipment, and system integration and testing. In August 2009, the Lassen bridge (500' long 3-span bridge over active railroad tracks/Lassen Street) and Lassen Street Improvements were added to Contract C0943.

**C0941: North Parking Lot (Chatsworth Station)** is a construction contract for a new parking lot to be constructed north of the existing Chatsworth Metrolink Station. Completion of this lot is required before the south parking lot is modified to ensure that parking is continuously available for Metrolink patrons during construction of the MOL Extension.

**Work Order – Advance Metrolink Rail Signal Modifications, Track Realignment, and At-Grade Lassen Crossing Enhancements** is to be substantially completed by Metrolink in advance of the Design-Build Contractor commencing construction of portions of the Lassen bridge.

**Work Order - Advance Relocation of power, fiber optic and communication lines on Lassen Street** is to be completed by LADWP and the affected utility companies prior to the Design-Build Contractor commencing construction of portions of the Lassen bridge.

## **SCHEDULE NARRATIVE**

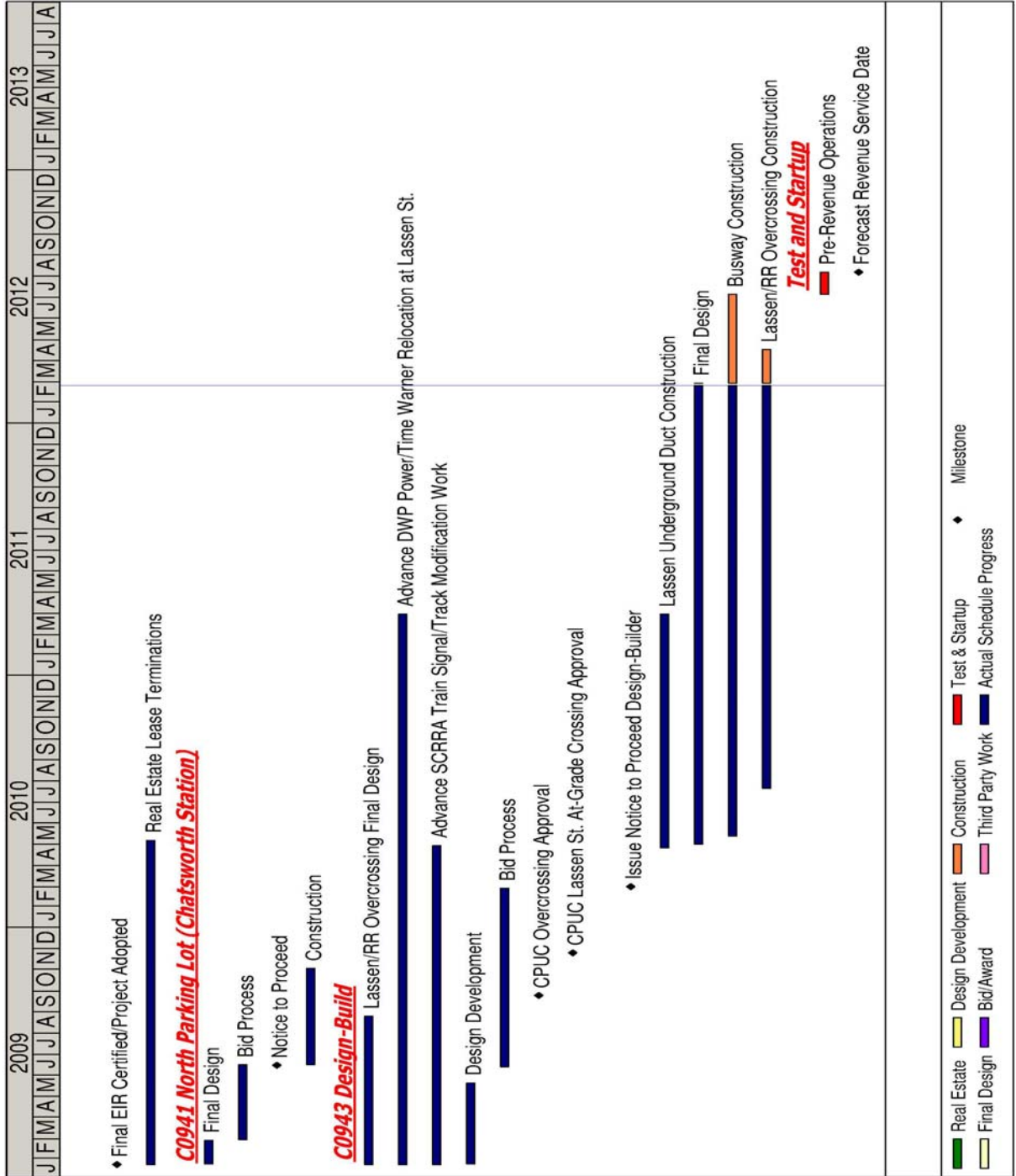
**Critical Path:**

The longest schedule path occurs with completing station construction and critical systems installation and testing.

Other critical items include completion of intersection construction, bridges, Marilla Lot and the bikeway.

Further mitigation of schedule delays to completion milestones is being explored. Metro is working towards an earlier opening of the busway and bikeway in June 2012.

**SUMMARY SCHEDULE**



**PROJECT COST STATUS - 800119**

**COST REPORT BY ELEMENT**

UNITS IN MILLIONS

ELEMENT	DESCRIPTION	ORIGINAL BUDGET	CURRENT BUDGET		COMMITMENTS		EXPENDITURES		CURRENT FORECAST		FORECAST VARIANCE
			PERIOD	TO DATE	PERIOD	TO DATE	PERIOD	TO DATE	PERIOD	TO DATE	
C	CONSTRUCTION	137.3	-	137.3	-	95.9	5.6	69.7	-	109.5	(27.8)
R	RIGHT-OF-WAY	8.0	-	8.0	-	4.5	-	2.2	-	3.2	(4.8)
V	VEHICLES / BUSES	9.9	-	9.9	-	10.0	0.4	7.0	-	9.9	-
P	PROFESSIONAL SERVICES	38.7	-	38.7	-	26.3	0.4	21.6	-	29.0	(9.7)
PC	PROJECT CONTINGENCY	21.7	-	21.7	-	-	-	-	-	28.4	6.7
PB	PROJECT RESERVE	-	-	-	-	-	-	-	-	-	-
PR	PROJECT REVENUE	-	-	-	-	-	-	-	-	-	-
TOTAL		215.6	-	215.6	-	136.7	6.4	100.5	-	180.0	(35.6)

NOTE: EXPENDITURES ARE CUMULATIVE THROUGH JANUARY 2012.

**PROJECT COST ANALYSIS**

**Original Budget and Current Budget:**

The Life of Project Budget for the Metro Orange Line Extension Project construction effort was adopted in January 2009 for a value of \$215.6 million. This amount does not include the prior planning and environmental development costs of \$5.4 million. The current budget remains the same as the Original Budget.

**Current Forecast:** The total project forecast was reduced to \$180.0 million. Will continue to evaluate overall cost exposure to ascertain if additional savings can be achieved as project nears completion.

**Commitments:**

The commitments remain the same this period. The \$136.7 million in commitments to date represents 63.4% of the current budget.

**Expenditures:**

The expenditures are cumulative through January 2012. The expenditures increased by \$6.4 million this period. In the Construction element there was an increase of \$5.6 million for cost associated with the Design-Build Contract C0943, environmental consultants, third party scope of work with the City of Los Angeles, and Metro Art Program. In the Vehicle element there was an increase of \$0.4 million for midlife overhaul of existing Orange Line buses. In the Professional Services element there was an increase of \$0.4 million for costs associated with final design, construction management support, lab testing services, community outreach program, and MTA project administration. The \$100.5 million in expenditures to date represents 46.6% of the current budget.



**FINANCIAL/GRANT STATUS  
Project 800119 – Metro Orange Line Extension**

**FEBRUARY 2012**

**STATUS OF FUNDS BY SOURCE**

\$ in millions

SOURCE	(A)	(B)	(C)	(D)	(D/B)	(E)	(E/B)	(F)	(F/B)
	ORIGINAL BUDGET	TOTAL FUNDS ANTICIPATED	TOTAL FUNDS AVAILABLE	COMMITMENTS		EXPENDITURES		BILLED to FUNDING SOURCE	
	(1)	(2)		\$	%	\$	%	\$	%
PROP 1B FUNDS-PTMISEA*	68.0	70.0	70.0	70.0	100%	70.0	100%	70.0	100%
PROP 1B FUNDS-SLTPP**	73.8	72.8	62.7	33.4	46%	15.3	21%	8.2	11%
PROP C 25%	73.8	72.8	38.0	33.4	46%	15.3	21%	8.2	11%
<b>TOTAL</b>	<b>215.6</b>	<b>215.6</b>	<b>170.7</b>	<b>136.8</b>	<b>63.4%</b>	<b>100.5</b>	<b>47.0%</b>	<b>86.4</b>	<b>40%</b>

(1) Based on January 2009 MTA Board adoption of Life of Project (LOP) Budget. LOP Budget doesn't include planning and environmental costs.

(2) Based on August 2011 Capital Programming Revised Financial Plan.

\* PTMISEA: Public Transportation Modernization and Improvement Surface Enhancement Account

\*\* SLTPP: State - Local Transportation Partnership Program

NOTE: Expenditures are cumulative through January 2012.

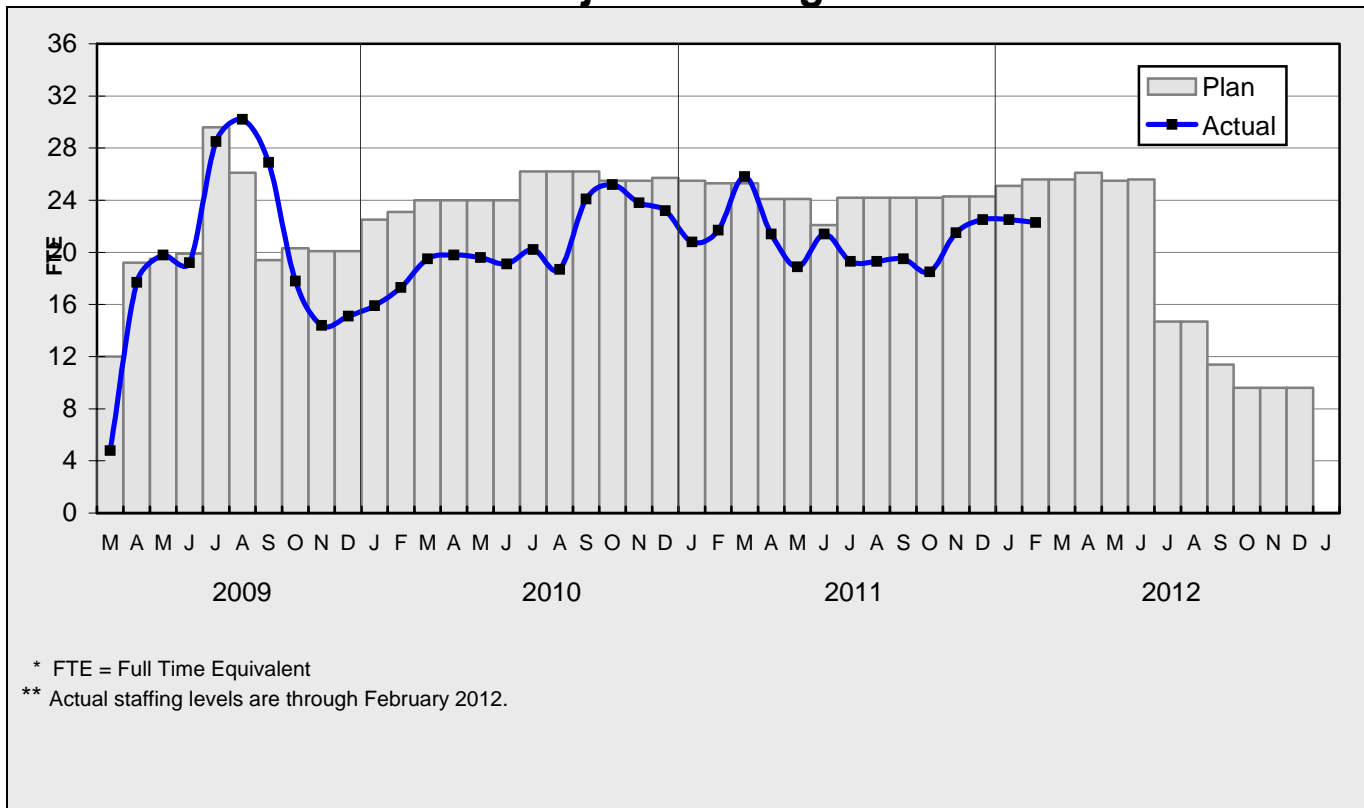
**STATUS OF FUNDS ANTICIPATED**

**STATE PROP 1B – PTMISEA:** MTA submitted a request to Caltrans to allocate \$29.5 million of FY10 funds to the Project. The allocation request was approved in October 2011. Funds are available for drawdown.

**STATE PROP 1B – SLTPP:** At the January 2011 Meeting, the CTC approved MTA's December 2009 \$14.7M and May 2010 \$34.5M allocation requests. Both Grants are available for drawdown. At the October 2011 CTC Meeting, MTA's \$13.5 million allocation request was approved. The grant is available for drawdown.

**PROP C 25%:** Metro FY11 Funding Matrix earmarks \$38M of Prop C 25% Streets and Highways Funds for this project.

**STAFFING STATUS  
Total Project Staffing - FTES**



**Total Project Staffing**

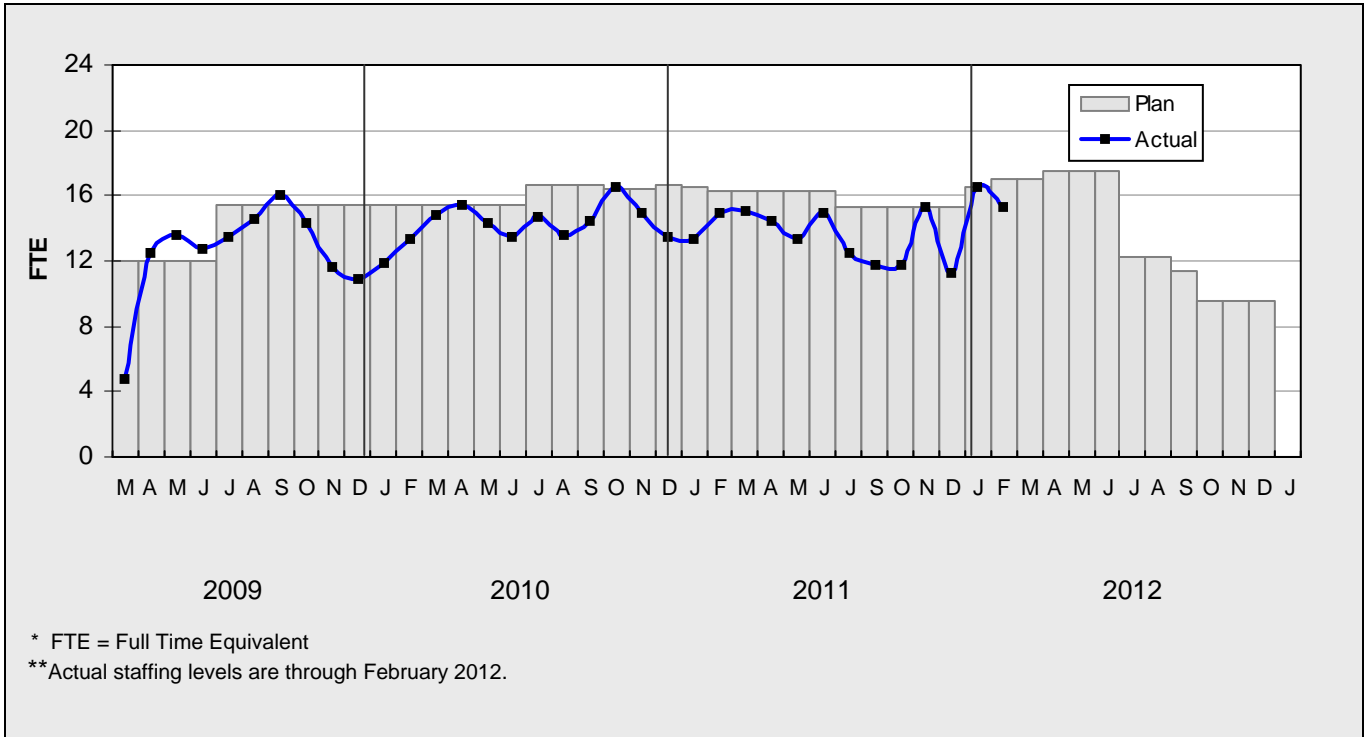
The overall FY12 Total Project Staffing plan averages 24.9 FTE's per month.

For February 2012, there were a total of 15.3 FTE's for MTA's Project Administration staff and 7.0 FTE's for consulting staff. The total project staffing was 22.3 FTE's for February 2012.

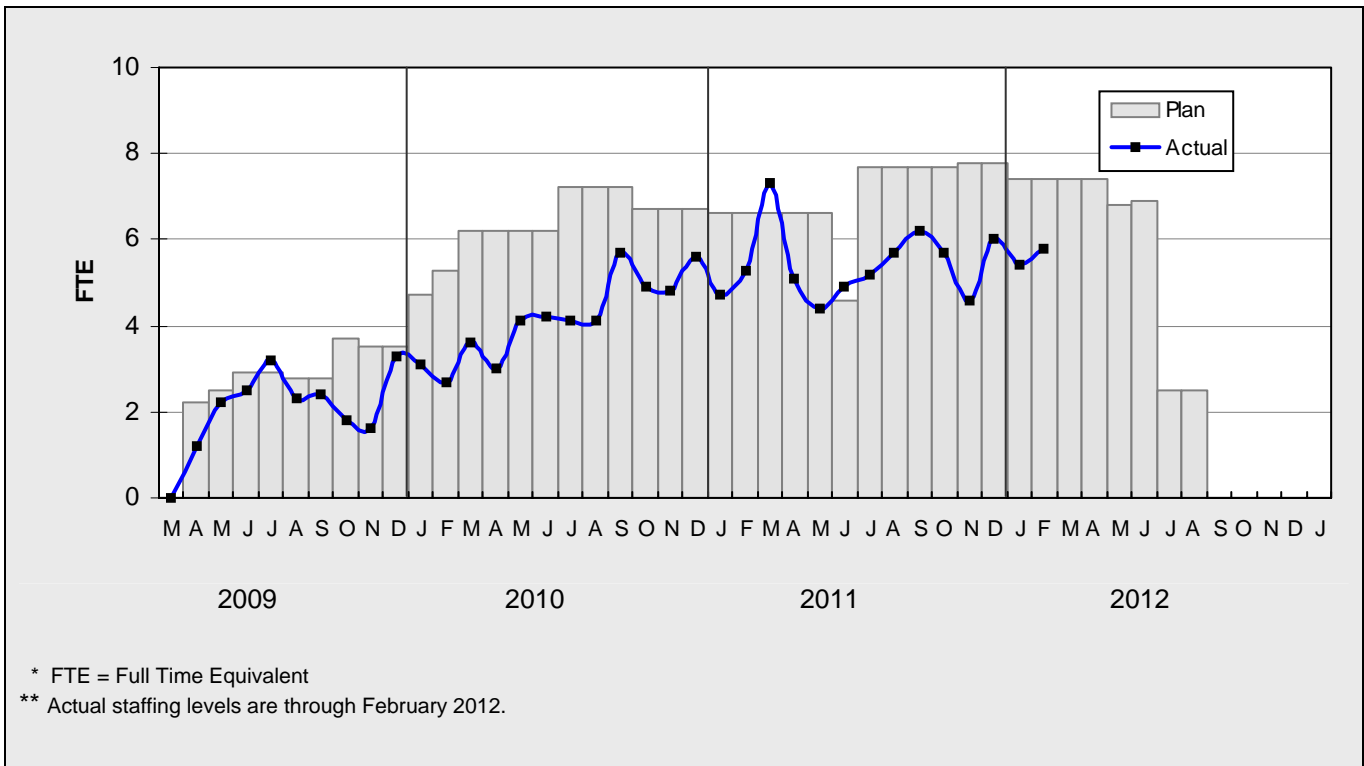
Staffing for the Central Maintenance Department's midlife overhaul of Orange Line buses are not included as an FTE but are included within the vehicle cost element (see Page 6 Element V).

**STAFFING STATUS**

**MTA STAFFING - FTES**

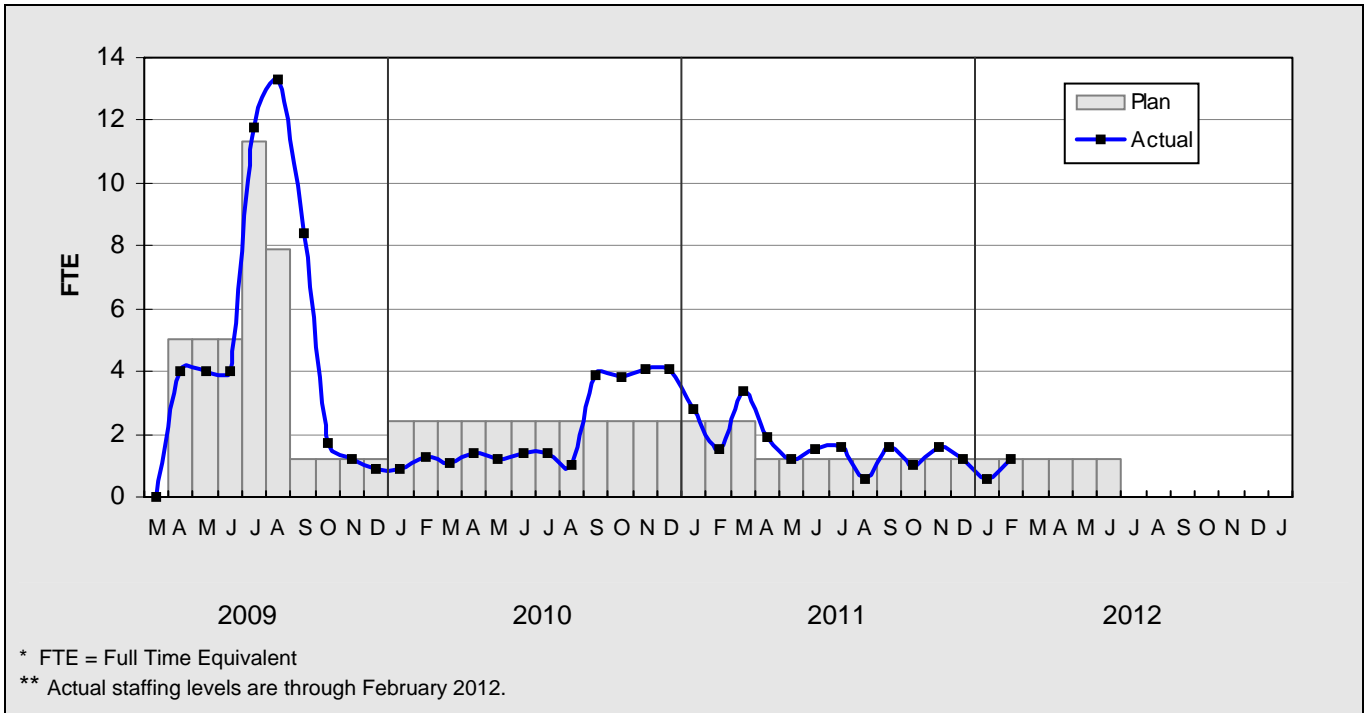


**CONSTRUCTION MANAGEMENT  
SUPPORT SERVICES CONSULTANT - FTES**



## STAFFING STATUS

### ENGINEERING SERVICES CONSULTANT



**REAL ESTATE STATUS**

**LEASES**

- Real Estate is working with Jacobi to coordinate the relocation of a portion of the boundry wall on MTA and City property. Jacobi is working with the City to obtain the approval to use City property and is waiting for MOL Extension construction activities at the property to be completed before relocating boundry wall.

	Total Leases	Total Leases to be Terminated	Total Leases to Remain with Modified Lease	Leases to Remain Under Existing Lease	Relocations Completed	Total Signboards Removed
Leases	82	78	3	1	52	26

**QUALITY ASSURANCE STATUS**

- Attended weekly job and readiness review meetings with Brutoco.
- Monitored the construction work along the alignment.

**ENVIRONMENTAL STATUS**

- Continued to monitor dust emissions along the project alignment for compliance with Rule 403.
- Continued BMP monitoring with inspections two to three times a week.
- Approved use of Slope Saver grass for planting in the bio-swales.
- Approved the planting of Desert Willow and Palo Verde as a substitute ornamental tree along the alignment.

## **COMMUNITY RELATIONS STATUS**

- Distributed 11,500 construction notices for full street closure for Vanowen Street, 20,500 construction notices for grind and cap of Parthenia and Saticoy Street and 2 Open During Construction banners to local businesses.
- Participated in tour with the California Transportation Commission.
- Coordinated field visits with business owner of Jacobi Building Materials, City of LA Council District 3, LABOE regarding the revocable permit for Jacobi Building Materials, management of TruGreen and Ferguson regarding fence encroachment on Metro ROW, Central Car Sales on Sherman Way regarding removal of sign and adjustment of security lights, tenants of Chatsworth Metrolink Station regarding upcoming Time Warner service interruptions, business owners and manager of Canoga Sheet Metal, A & J Automotive, Valley Pacific and Grand National Auto Body regarding fence encroachments, business owners of Valley Industrial Electric regarding removal of existing wall and potential reconstruction of new wall, management of Canoga Self Storage regarding fence damage allegation and management of Chatsworth Mobile Home Park regarding property damage allegation and noise complaints received from tenant.

## **ART DEVELOPMENT STATUS**

- Completed artwork installation technical specifications. Lofting and installation plans transmitted to Orange Line design build contractor.
- Ongoing coordination with design build contractor regarding artwork installation.
- Mosaic artwork for Canoga and Nordhoff Stations delivered to jobsite resulting in 100% artwork delivery.

**SAFETY STATUS**

**CO943:**


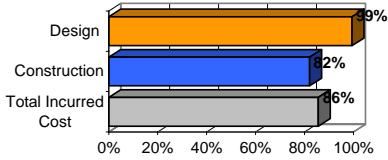
- Participated in weekly progress and Tool-box Safety Meetings to discuss safety and security related issues.
- Conducted onsite monthly safety reviews and minor conditions were observed and corrected.
- Monitored construction activities on a daily basis including weekends to ensure safety compliance with contract specifications.
- Conducted an administrative audit to review incidents/injuries to ensure accurate recordkeeping.
- Brutoco and their subcontractors reported one recordable incident and 26,939 work hours for the month of February 2012. Total project to date work hours are 322,361 and seven recordable incidents. The recordable incident rate is 4.34 and zero lost time/days away incidents were reported.

**THIRD PARTY AGREEMENT STATUS**

<b>Third Party</b>	<b>Type of Agreement</b>	<b>Forecast Execution Date</b>	<b>Required Need Date</b>	<b>Status/ Comments</b>
City of Los Angeles	Licensing Agreement	4/12	N/A	MTA will include a revised Exhibit showing the maintenance areas and exclusions based on approved design and submit the agreement for final review and approval.
City of Los Angeles	O & M Agreement For Chatsworth Station	4/12	N/A	MTA and DOT to meet and finalize the agreement.

**Note: For a list of all Third Party Agreements, that have been executed, please see the May 2010 Monthly Project Status Report.**

**CONTRACT C0943 STATUS**

<p><b>Design Builder Contractor:</b> Brutoco, Engineering and Construction, Inc.</p>	<p><b>Contract No.:</b> C0943 <b>Status as of:</b> March 2, 2012</p>																																									
<p>Progress/Work Completed (in addition to progress shown on p.2):</p> <ul style="list-style-type: none"> <li>- Completed canopy translucent panel installation at Canoga Station.</li> <li>- Completed Nordhoff Station trench drain, electrical, and comm.</li> <li>- Completed remaining utility work at Sherman Way intersection.</li> <li>- Completed grind and overlay at Parthenia and Saticoy intersections.</li> <li>- Completed LA River Bridge and Santa Susanna Bridge concrete barrier.</li> <li>- Completed Lassen Bridge wall 1 and 2 panels.</li> </ul>	<p><b>Areas of Concern:</b> - See Management Issues page 2.</p>																																									
<p><b>Schedule Assessment:</b> The design builder's February Schedule Update to the approved Baseline Schedule continues to indicate potential delays in achieving future Contract Milestones. The design builder is currently forecasting a substantial completion of July 13, 2012 to Milestone #1. MTA and the design builder are currently negotiating a change for mitigation of delays and schedule acceleration.</p> <p>Note: The forecast dates for Contract Milestones shown in the table below are based on the current Schedule Update. MTA will reject this Update and continue to work with the design builder to develop a revised schedule mitigation plan to deliver the project by contractual completion dates.</p>	<p><b>Cost Assessment:</b> The current construction contract cost forecast is \$85.60 million and is within the Board authorized budget.</p> <p>The Design Builder submitted their 24th payment application in the approved amount of \$3.1 million.</p> <p>Increase in costs to the construction contract award value are a result of design enhancements and change orders.</p>																																									
<p><b>Schedule Summary:</b></p> <table border="0"> <tr> <td>1. Date of Award:</td> <td>02/10/10</td> </tr> <tr> <td>2. Notice to Proceed:</td> <td>03/01/10</td> </tr> <tr> <td>3. Original Substantial Completion Duration:</td> <td>730</td> </tr> <tr> <td>4. Current Substantial Completion Duration:</td> <td>730</td> </tr> <tr> <td>5. Elapsed Time from NTP:</td> <td>725</td> </tr> </table>	1. Date of Award:	02/10/10	2. Notice to Proceed:	03/01/10	3. Original Substantial Completion Duration:	730	4. Current Substantial Completion Duration:	730	5. Elapsed Time from NTP:	725	<p><b>Cost Summary:</b></p> <table border="0"> <tr> <td></td> <td style="text-align: right;"><b>\$ In 000's</b></td> </tr> <tr> <td>1. Award Value:</td> <td style="text-align: right;">82.49</td> </tr> <tr> <td>2. Executed Modifications:</td> <td style="text-align: right;">2.85</td> </tr> <tr> <td>3. Approved Change Orders:</td> <td style="text-align: right;">0.26</td> </tr> <tr> <td>4. Current Contract Value (1 + 2 + 3):</td> <td style="text-align: right;">85.60</td> </tr> <tr> <td>5. Incurred Cost:</td> <td style="text-align: right;">73.31</td> </tr> </table>		<b>\$ In 000's</b>	1. Award Value:	82.49	2. Executed Modifications:	2.85	3. Approved Change Orders:	0.26	4. Current Contract Value (1 + 2 + 3):	85.60	5. Incurred Cost:	73.31																			
1. Date of Award:	02/10/10																																									
2. Notice to Proceed:	03/01/10																																									
3. Original Substantial Completion Duration:	730																																									
4. Current Substantial Completion Duration:	730																																									
5. Elapsed Time from NTP:	725																																									
	<b>\$ In 000's</b>																																									
1. Award Value:	82.49																																									
2. Executed Modifications:	2.85																																									
3. Approved Change Orders:	0.26																																									
4. Current Contract Value (1 + 2 + 3):	85.60																																									
5. Incurred Cost:	73.31																																									
<table border="1"> <thead> <tr> <th>Contract Milestones</th> <th>Original Contract</th> <th>Current Contract</th> <th>Forecast (see note above)</th> <th>Calendar Day Variance</th> </tr> </thead> <tbody> <tr> <td>Milestone 1 - Contract Substantial Completion</td> <td>02/29/12</td> <td>02/29/12</td> <td>07/13/12</td> <td>-135</td> </tr> <tr> <td>Milestone 2 - Complete Universal Fare System Requirements</td> <td>11/01/11</td> <td>11/01/11</td> <td>03/28/12</td> <td>-148</td> </tr> <tr> <td>Milestone 3 - Elect/Communication Requirements Complete</td> <td>01/30/12</td> <td>01/30/12</td> <td>06/28/12</td> <td>-150</td> </tr> <tr> <td>Milestone 4 - Passenger Information System Testing Complete</td> <td>02/29/12</td> <td>02/29/12</td> <td>08/10/12</td> <td>-163</td> </tr> <tr> <td>Milestone 5 - System Assurance Complete</td> <td>02/28/13</td> <td>02/28/13</td> <td>08/21/13</td> <td>-174</td> </tr> <tr> <td>Milestone 6 - Landscape and Planting Maintenance and Warranty</td> <td>02/28/14</td> <td>02/28/14</td> <td>07/11/14</td> <td>-133</td> </tr> <tr> <td>Option C - Undergrounding of DWP Power line at Lassen Street</td> <td>05/30/10</td> <td>05/30/10</td> <td>12/6/2010 A</td> <td>-190</td> </tr> </tbody> </table>	Contract Milestones	Original Contract	Current Contract	Forecast (see note above)	Calendar Day Variance	Milestone 1 - Contract Substantial Completion	02/29/12	02/29/12	07/13/12	-135	Milestone 2 - Complete Universal Fare System Requirements	11/01/11	11/01/11	03/28/12	-148	Milestone 3 - Elect/Communication Requirements Complete	01/30/12	01/30/12	06/28/12	-150	Milestone 4 - Passenger Information System Testing Complete	02/29/12	02/29/12	08/10/12	-163	Milestone 5 - System Assurance Complete	02/28/13	02/28/13	08/21/13	-174	Milestone 6 - Landscape and Planting Maintenance and Warranty	02/28/14	02/28/14	07/11/14	-133	Option C - Undergrounding of DWP Power line at Lassen Street	05/30/10	05/30/10	12/6/2010 A	-190		<p><b>PERCENT COMPLETE</b> from March 1, 2010 to March 2, 2012</p>  <p style="text-align: center;"><b>Percent Complete Progress</b></p> <p><i>Construction physical percent complete excludes mobilization and general requirements</i></p>
Contract Milestones	Original Contract	Current Contract	Forecast (see note above)	Calendar Day Variance																																						
Milestone 1 - Contract Substantial Completion	02/29/12	02/29/12	07/13/12	-135																																						
Milestone 2 - Complete Universal Fare System Requirements	11/01/11	11/01/11	03/28/12	-148																																						
Milestone 3 - Elect/Communication Requirements Complete	01/30/12	01/30/12	06/28/12	-150																																						
Milestone 4 - Passenger Information System Testing Complete	02/29/12	02/29/12	08/10/12	-163																																						
Milestone 5 - System Assurance Complete	02/28/13	02/28/13	08/21/13	-174																																						
Milestone 6 - Landscape and Planting Maintenance and Warranty	02/28/14	02/28/14	07/11/14	-133																																						
Option C - Undergrounding of DWP Power line at Lassen Street	05/30/10	05/30/10	12/6/2010 A	-190																																						