



Metro Orange Line Extension

MONTHLY PROJECT STATUS REPORT



10-1265CMC ©2010 LACMTA

TABLE OF CONTENTS

	Page No.
Project Overview.....	1-2
Management Issues.....	2
Project Status	
• Project Scope.....	3
• Schedule	
○ Schedule Narrative	4
○ Summary Schedule.....	5
• Project Cost Status and Analysis.....	6
• Financial/Grant Status.....	7
• Staffing.....	8-10
• Real Estate.....	11
• Quality Assurance.....	11
• Environmental.....	11
• Community Relations.....	12
• Art Development.....	12
• Safety.....	13
• Third Party.....	13
• Contract C0943 Status.....	14
• Construction Photographs.....	15

PROJECT OVERVIEW

The Metro Orange Line (MOL) Extension Project is a four-mile extension of the Metro Orange Line extending from the Canoga park-and-ride lot to the Chatsworth Metrolink Station. The Project includes: busway, new station platforms at the Canoga park-and-ride lot, new stations at Sherman Way (with park-and-ride), Roscoe Boulevard, Nordhoff Street, and the Chatsworth Metrolink Station (with park-and-ride); grade-separation structure over active railroad tracks and Lassen Street (Lassen bridge) providing direct access into the Chatsworth Metrolink Station; Los Angeles River and Santa Susana Wash bridge crossings; and satellite bus parking facility. The project also includes street improvements, bicycle/pedestrian path, systems equipment and landscaping similar to the MOL.

With the MTA Board adoption of the MOL Extension Project in January 2009, the Board directed staff to accelerate the completion of the Project to summer 2012.

Major Accomplishments to date:

- Constructed the north parking lot at Chatsworth station.
- Completed final design and obtained approvals of Lassen bridge.
- Relocated tracks and completed new rail signals (by Metrolink).
- Completed all real estate relocations and acquired easements from UP.
- Constructed Privacy Fence/walls adjacent to mobile homes.
- Demolished structures, removed vegetation and trees, and cleared the right of way.
- Removed known hazardous materials and contaminated soils.
- Completed construction of the super structure and deck for Lassen bridge, LA River bridge and Santa Susanna Bridge. Completed MSE walls north of Lassen Bridge.
- Completed sewer encasement protection at Saticoy intersection.
- Completed DWP and other utility relocations at Lassen Street, pinch point and all intersections except Sherman Way.

The design builder, Brutoco Engineering & Construction, Inc, started on March 1, 2010 and is responsible for the construction of the Lassen bridge and Lassen Street improvements as well as for the design and construction of the remaining Project scope of work. The design builder:

- Completed 99.6% of the final design.
- Continued grading, base paving, storm drain, stations, communication ductbank, electrical, fencing and landscape irrigation work along the busway.
- Continued MSE walls on south approach and architectural feature on Lassen Bridge.
- Continued work on Santa Susana and LA River Bridge barrier rail and approaches.
- Continued installation of canopies and other work at stations.
- Continued construction of street intersection work and bikeway grading.
- Continued rest room work at Chatsworth Station.
- Continued coordination with utility companies for relocations of power and communication lines, and other utility work at intersections.
- Continued with procurement of electrical, communications and other systems equipment.

PROJECT OVERVIEW (Contd)

Other Project specific items required for revenue operations includes:

- Purchase and install fare collection equipment – The Contractor, Cubic Transportation Systems, Inc., has completed delivery of all equipment and is in storage pending installation in the near future.
- Station Artwork – Achieved 100% completion of art panel fabrication for Canoga, Roscoe, Sherman Way, Nordhoff and Chatsworth Stations. Achieved 100% fabrication completion of mosaic artwork fabrication for Canoga, Roscoe, Nordhoff and Chatsworth Stations.
- Vehicles – Operations (Central Maintenance Department), Thirty-one midlife overhauls have been completed on 9200s buses designated for the Orange Line. Operations has eight buses in process that are scheduled to be released by the end of March 2012 for pre-revenue service. An additional nine buses are in the queue to be finalized by June 2012.
- Procure additional signage at existing Canoga and Orange Line platforms.

To date, commitments are \$136.7 million or 63.4% of the Original Budget. Expenditures are \$94.1 million or 43.7% of the \$215.6 million Original Budget. Design-builder's final design percent complete is 99.6% and construction physical percent complete is 77%.

MANAGEMENT ISSUES

Concern No. 1: Module B Installation

Status/Action Completing concrete pads, power pedestals and communication cabinets is affecting station completion and availability for DWP power service installation. Working with BEC to expedite completion.

Concern No. 2: Design builder is showing delays in completion milestones.

Status/Action Metro continues to reject monthly updates to the approved baseline schedule and is working with the design builder to further mitigate milestone impacts. Metro is working towards an earlier opening of the project in June 2012.

PROJECT SCOPE



C0943: Metro Orange Line Extension (MOL Ext) is a design-build contract to construct the majority of the Project scope of work. This contract will include design and construction of busway, new stations at Sherman Way (with park-and-ride), Roscoe Boulevard, Nordhoff Street, and Chatsworth Metrolink Station (with park-and-ride). The existing MOL Canoga park-and-ride lot will be modified with new station platforms. In addition, the contractor will design and construct approaches to the Lassen bridge, a bridge over the Los Angeles River, a smaller bridge over the Santa Susana Wash, street improvements, bicycle/pedestrian path, satellite bus parking facility, landscaping, systems equipment, and system integration and testing. In August 2009, the Lassen bridge (500' long 3-span bridge over active railroad tracks/Lassen Street) and Lassen Street Improvements were added to Contract C0943.

C0941: North Parking Lot (Chatsworth Station) is a construction contract for a new parking lot to be constructed north of the existing Chatsworth Metrolink Station. Completion of this lot is required before the south parking lot is modified to ensure that parking is continuously available for Metrolink patrons during construction of the MOL Extension.

Work Order – Advance Metrolink Rail Signal Modifications, Track Realignment, and At-Grade Lassen Crossing Enhancements is to be substantially completed by Metrolink in advance of the Design-Build Contractor commencing construction of portions of the Lassen bridge.

Work Order - Advance Relocation of power, fiber optic and communication lines on Lassen Street is to be completed by LADWP and the affected utility companies prior to the Design-Build Contractor commencing construction of portions of the Lassen bridge.

SCHEDULE NARRATIVE

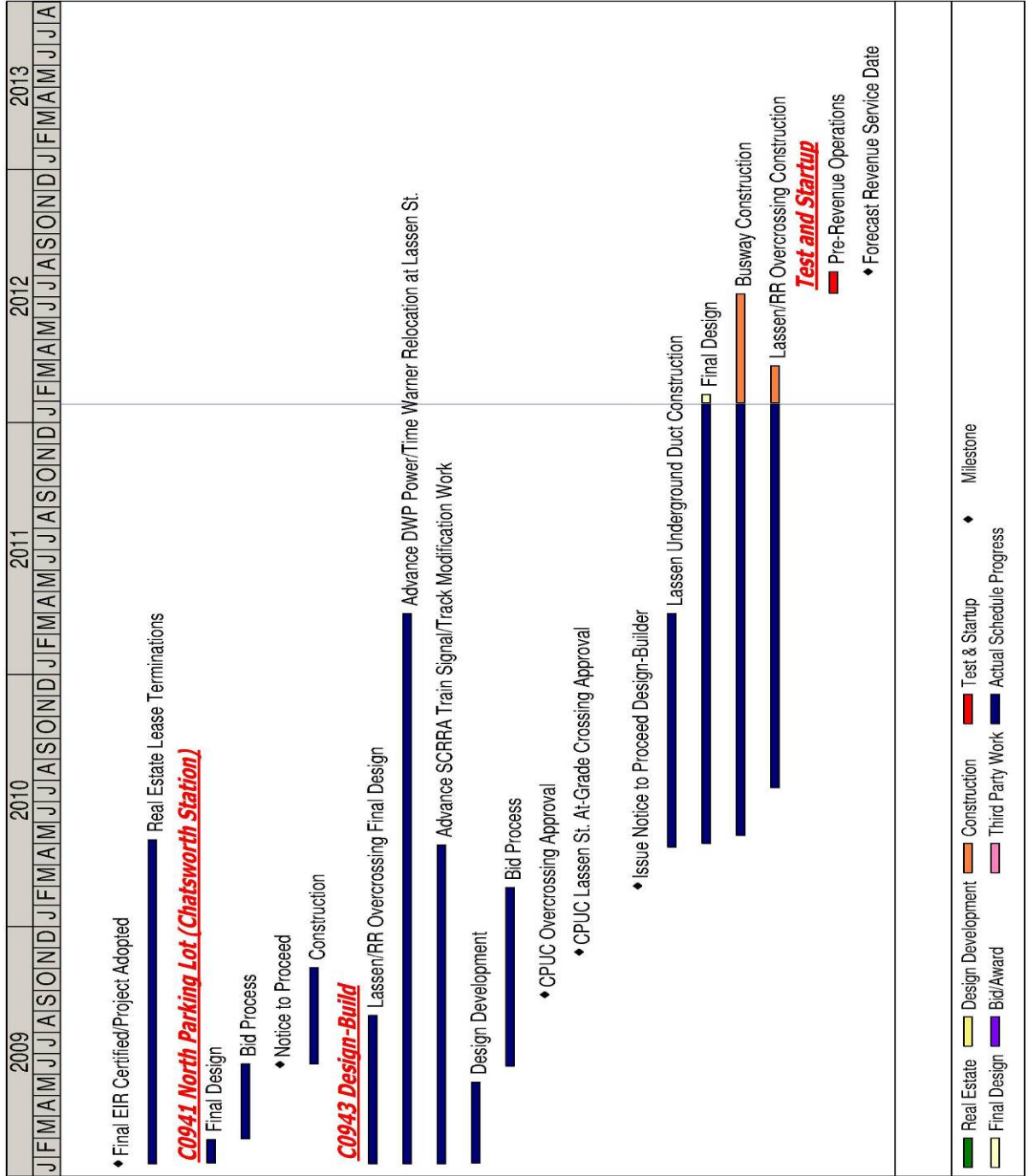
Critical Path:

The longest schedule path occurs with completing station construction and critical systems installation and testing.

Other critical items include completion of intersection construction, bridges, Marilla Lot and the bikeway.

Further mitigation of schedule delays to completion milestones is being explored. Metro is working towards an earlier opening in June 2012.

SUMMARY SCHEDULE



PROJECT COST STATUS - 800119

COST REPORT BY ELEMENT

UNITS IN MILLIONS

ELEMENT	DESCRIPTION	ORIGINAL BUDGET	CURRENT BUDGET		COMMITMENTS		EXPENDITURES		CURRENT FORECAST		FORECAST VARIANCE
			PERIOD	TO DATE	PERIOD	TO DATE	PERIOD	TO DATE	PERIOD	TO DATE	
C	CONSTRUCTION	137.3	-	137.3	0.1	95.9	4.8	64.1	(9.8)	109.5	(27.8)
R	RIGHT-OF-WAY	8.0	-	8.0	-	4.5	-	2.2	(1.0)	3.2	(4.8)
V	VEHICLES / BUSES	9.9	-	9.9	-	10.0	0.4	6.6	-	9.9	-
P	PROFESSIONAL SERVICES	38.7	-	38.7	0.1	26.3	0.4	21.2	(5.6)	29.0	(9.7)
PC	PROJECT CONTINGENCY	21.7	-	21.7	-	-	-	-	16.4	28.4	6.7
PB	PROJECT RESERVE	-	-	-	-	-	-	-	-	-	-
PR	PROJECT REVENUE	-	-	-	-	-	-	-	-	-	-
TOTAL		215.6	-	215.6	0.2	136.7	5.6	94.1	-	180.0	(35.6)

NOTE: EXPENDITURES ARE CUMULATIVE THROUGH DECEMBER 2011.

PROJECT COST ANALYSIS

Original Budget and Current Budget:

The Life of Project Budget for the Metro Orange Line Extension Project construction effort was adopted in January 2009 for a value of \$215.6 million. This amount does not include the prior planning and environmental development costs of \$5.4 million. The current budget remains the same as the Original Budget.

Current Forecast: The total project forecast remains at \$180.0 million. Will continue to evaluate overall cost exposure to ascertain if additional savings can be achieved as project nears completion.

Commitments:

The commitments increased by \$0.2 million this period. In the Construction element there was an increase of \$0.1 million primarily for executed contract modifications associated with the Design-Build Contract C0943 and third party scope of work with the City of Los Angeles. The \$136.7 million in commitments to date represents 63.4% of the current budget.

Expenditures:

The expenditures are cumulative through December 2011. The expenditures increased by \$5.6 million this period. In the Construction element there was an increase of \$4.8 million for cost associated with the Design-Build Contract C0943, third party scope of work with the City of Los Angeles, and Metro Art Program. In the Vehicle element there was an increase of \$0.4 million for midlife overhaul of existing Orange Line buses. In the Professional Services element there was an increase of \$0.4 million for costs associated with final design, construction management support, lab testing services, community outreach program, and MTA project administration. The \$94.1 million in expenditures to date represents 43.7% of the current budget.

**FINANCIAL/GRANT STATUS
Project 800119 – Metro Orange Line Extension**

JANUARY 2012

STATUS OF FUNDS BY SOURCE

\$ in millions

SOURCE	(A)	(B)	(C)	(D)	(D/B)	(E)	(E/B)	(F)	(F/B)
	ORIGINAL BUDGET	TOTAL FUNDS ANTICIPATED	TOTAL FUNDS AVAILABLE	COMMITMENTS		EXPENDITURES		BILLED to FUNDING SOURCE	
	(1)	(2)		\$ %		\$ %		\$ %	
PROP 1B FUNDS-PTMISEA*	68.0	70.0	70.0	70.0	100%	70.0	100%	70.0	100%
PROP 1B FUNDS-SLTPP**	73.8	72.8	62.7	33.3	46%	12.0	17%	8.2	11%
PROP C 25%	73.8	72.8	38.0	33.3	46%	12.0	17%	8.2	11%
TOTAL	215.6	215.6	170.7	136.5	63.4%	94.1	43.7%	86.4	40%

(1) Based on January 2009 MTA Board adoption of Life of Project (LOP) Budget. LOP Budget doesn't include planning and environmental costs.

(2) Based on August 2011 Capital Programming Revised Financial Plan.

* PTMISEA: Public Transportation Modernization and Improvement Surface Enhancement Account

** SLTPP: State - Local Transportation Partnership Program

NOTE: Expenditures are cumulative through December 2011.

STATUS OF FUNDS ANTICIPATED

STATE PROP 1B – PTMISEA: MTA submitted a request to Caltrans to allocate \$29.5 million of FY10 funds to the Project. The allocation request was approved in October 2011. Funds are available for drawdown.

STATE PROP 1B – SLTPP: At the January 2011 Meeting, the CTC approved MTA's December 2009 \$14.7M and May 2010 \$34.5M allocation requests. Both Grants are available for drawdown. At the October 2011 CTC Meeting, MTA's \$13.5 million allocation request was approved. The grant is available for drawdown.

PROP C 25%: Metro FY11 Funding Matrix earmarks \$38M of Prop C 25% Streets and Highways Funds for this project.

**STAFFING STATUS
Total Project Staffing - FTES**



Total Project Staffing

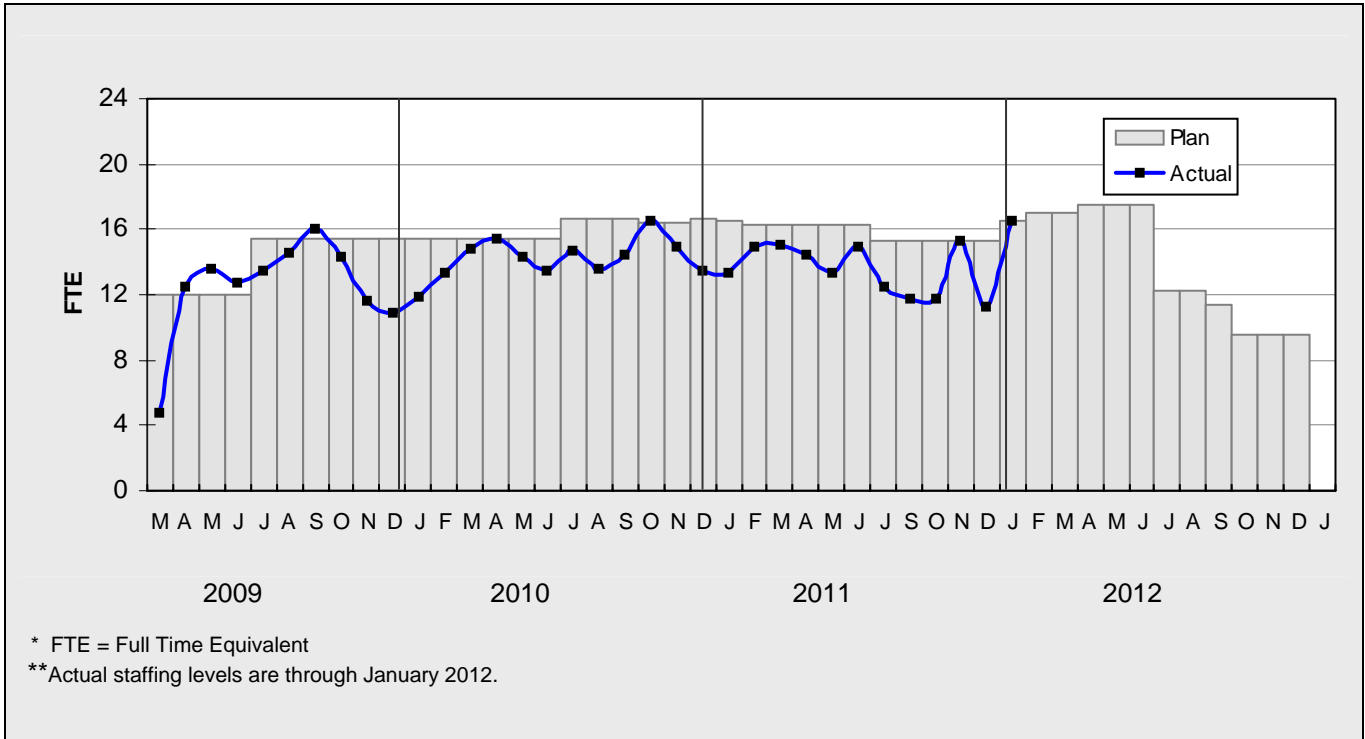
The overall FY12 Total Project Staffing plan averages 24.9 FTE's per month.

For January 2012, there were a total of 16.5 FTE's for MTA's Project Administration staff and 6.0 FTE's for consulting staff. The total project staffing was 22.5 FTE's for January 2012.

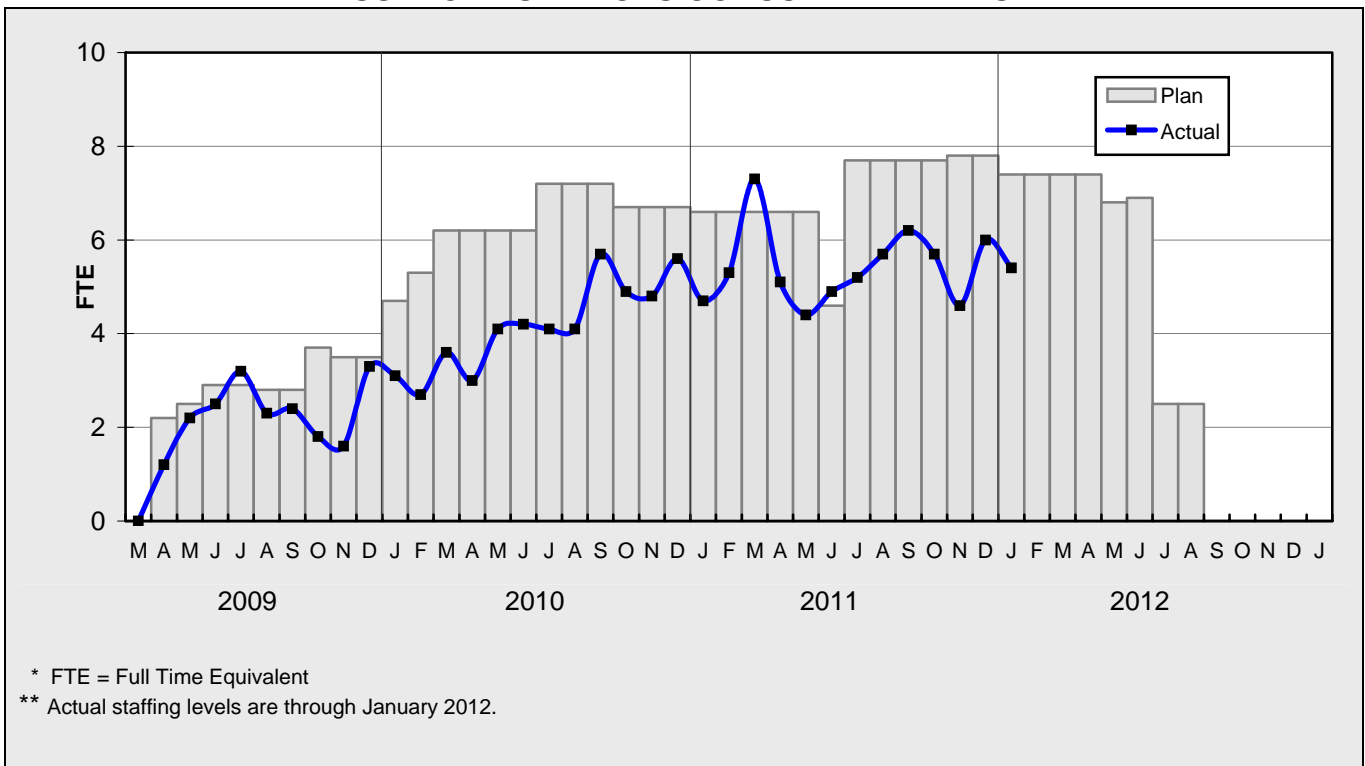
Staffing for the Central Maintenance Department's midlife overhaul of Orange Line buses are not included as an FTE but are included within the vehicle cost element (see Page 6 Element V).

STAFFING STATUS

MTA STAFFING - FTES

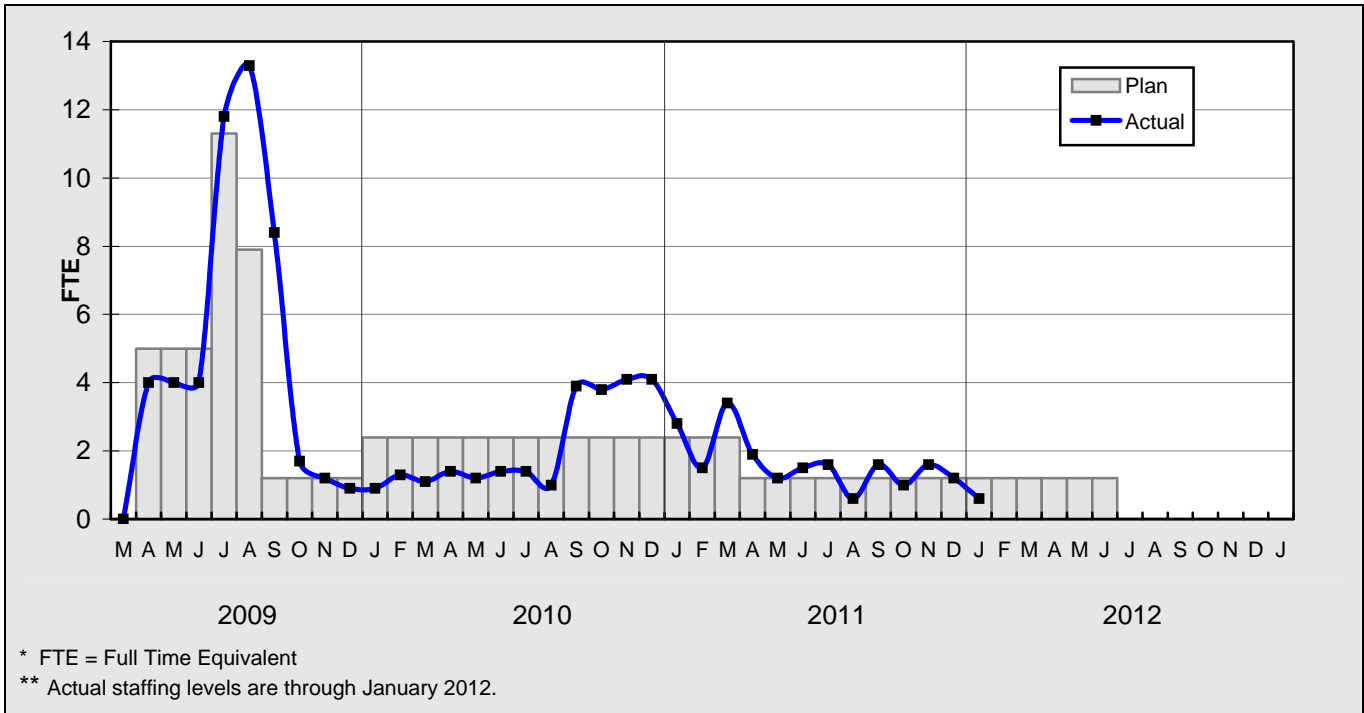


**CONSTRUCTION MANAGEMENT
SUPPORT SERVICES CONSULTANT - FTES**



STAFFING STATUS

ENGINEERING SERVICES CONSULTANT



REAL ESTATE STATUS

LEASES

- Real Estate is working with Jacobi to coordinate the relocation of a portion of the boundary wall on MTA and City property. Jacobi is working with the City to obtain the approval to use City property.

	Total Leases	Total Leases to be Terminated	Total Leases to Remain with Modified Lease	Leases to Remain Under Existing Lease	Relocations Completed	Total Signboards Removed
Leases	82	78	3	1	52	26

QUALITY ASSURANCE STATUS

- Attended weekly job and readiness review meetings with Brutoco.
- Monitored the construction work along the alignment.

ENVIRONMENTAL STATUS

- Continued to monitor dust emissions on an as needed basis.
- Continued BMP monitoring with inspections two to three times a week.
- Issued the 8th Quarterly Mitigation monitoring Report.

COMMUNITY RELATIONS STATUS

- Distributed 2,500 construction notices for the Canoga Station busway civil cutover, 1,500 construction notices for the implementation of traffic state 3 & 4 for Vanowen Street, 16,500 construction notices for the Sherman Way drainage tie-in, 1,200 take-ones for the Canoga Station cutover, 3 open during construction banners to local businesses and installed 8 banners for the Canoga Station busway civil cutover.
- Participated in various tours of the project, including the Mayor's Media Tour of the Metro Orange Line Extension, Transit Safety Outreach, Multiple Agency Exchange (MAX) and Congressional District 27.
- Participated in Readiness Review Meeting for the painting of the station canopies, Kick-off Meeting for the pre-revenue and revenue operations of the Metro Orange Line Extension.
- Coordinated two field visits with the Salvation Army regarding project water, Multiple Agency Exchange (MAX) Tour of the Metro Orange Line Extension and coordinated a project briefing and alignment tour for Congressional District 27.

ART DEVELOPMENT STATUS

- Achieved 100% fabrication of art panels at Canoga, Roscoe, Sherman Way, Nordhoff and Chatsworth Stations.
- Achieved 100% fabrication of mosaic artwork fabrication at Canoga, Roscoe, Nordoff and Chatsworth Stations.
- Art panels for Canoga, Sherman Way, Roscoe, Nordoff and Chatsworth Stations delivered to jobsite.
- Mosaic artwork for Sherman Way, Roscoe and Chatsworth Stations was delivered to jobsite.
- Mosaic artwork for Canoga and Nordhoff Stations crated for transportation to jobsite.

SAFETY STATUS

CO943:


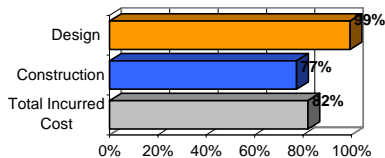
- Participated in weekly progress and Tool-box Safety Meetings to discuss safety and security related issues.
- Conducted onsite monthly safety reviews and minor conditions were observed and corrected.
- Monitored construction activities on a daily basis including weekends to ensure safety compliance with contract specifications.
- Brutoco and their subcontractors reported three recordable incidents and 32,031 work hours for the month of January 2012. Total project to date work hours are 295,422 and six recordable incidents. The recordable incident rate is 4.06 and zero lost time/days away incidents were reported.

THIRD PARTY AGREEMENT STATUS

Third Party	Type of Agreement	Forecast Execution Date	Required Need Date	Status/ Comments
City of Los Angeles	Licensing Agreement	2/12	N/A	LADOT has agreed to continue reviewing design. In parallel, MTA shall work on identifying other options (hardscape in lieu of landscaping) that can lower the cost of maintenance for the City. Once design is agreed upon, that design will be incorporated into the agreement. Intent is to still have the City maintain the bike path and landscaping/hardscape outside the fenceline.
City of Los Angeles	O & M Agreement	2/12	N/A	MTA received comments back from LADOT that contradict the previous agreements. MTA shall meet with LADOT to resolve the issues.

Note: For a list of all Third Party Agreements, that have been executed, please see the May 2010 Monthly Project Status Report.

CONTRACT C0943 STATUS

Design Builder Contractor: Brutoco, Engineering and Construction, Inc.		Contract No.: C0943 Status as of: January 27, 2012																																											
Progress/Work Completed (in addition to progress shown on p.2): <ul style="list-style-type: none"> - Completed Module B installation at Canoga and Nordhoff Stations. - Completed canopy translucent panel installation at Roscoe and Nordhoff Stations. - Completed stage 4 and 5 signal work at Roscoe intersection. - Completed LA River Bridge and Santa Susanna Bridge approach slabs. - Completed 100% of all artworks fabrication (ellipses and panel). - Completed AT&T cabinet removal at Saticoy. - Completed traffic signal controller programming (DOT). - Continued design of Marilla lot and street improvements. - Issued for Construction (IFC) Canoga (Nordhoff and Roscoe), Valerio and Sherman Way DWP service conduit. - IFC revised Vanowen, Stage 6 Workside Traffic Control Plans for Canoga. - IFC Saticoy, Valerio and Sherman Way street lights and DU2 landscape. 		Areas of Concern: - See Management Issues page 2.																																											
Schedule Assessment: The design builder's January Schedule Update to the approved Baseline Schedule continues to indicate potential delays in achieving future Contract Milestones. The design builder is currently forecasting a substantial completion of June 27, 2012 to Milestone #1. MTA has requested further mitigation schedules to contractually late Milestones and is currently awaiting submittal. Note: The forecast dates for Contract Milestones shown in the table below are based on the November Schedule Update. MTA will reject this Update and continue to work with the design builder to develop a revised schedule mitigation plan to deliver the project by contractual completion dates.		Cost Assessment: The current construction contract cost forecast is \$85.60 million and is within the Board authorized budget. The Design Builder submitted their 23rd payment application in the approved amount of \$5.2 million. Increase in costs to the construction contract award value are a result of design enhancements and change orders.																																											
Schedule Summary: 1. Date of Award: 02/10/10 2. Notice to Proceed: 03/01/10 3. Original Substantial Completion Duration: 730 4. Current Substantial Completion Duration: 730 5. Elapsed Time from NTP: 697		Cost Summary: \$ In 000's 1. Award Value: 82.49 2. Executed Modifications: 2.85 3. Approved Change Orders: 0.26 4. Current Contract Value (1 + 2 + 3): 85.60 5. Incurred Cost: 70.20																																											
<table border="1"> <thead> <tr> <th>Contract Milestones</th> <th>Original Contract</th> <th>Current Contract</th> <th>Forecast (see note above)</th> <th>Calendar Day Variance</th> </tr> </thead> <tbody> <tr> <td>Milestone 1 - Contract Substantial Completion</td> <td>02/29/12</td> <td>02/29/12</td> <td>06/27/12</td> <td>-119</td> </tr> <tr> <td>Milestone 2 - Complete Universal Fare System Requirements</td> <td>11/01/11</td> <td>11/01/11</td> <td>03/07/12</td> <td>-127</td> </tr> <tr> <td>Milestone 3 - Elect/Communication Requirements Complete</td> <td>01/30/12</td> <td>01/30/12</td> <td>06/04/12</td> <td>-126</td> </tr> <tr> <td>Milestone 4 - Passenger Information System Testing Complete</td> <td>02/29/12</td> <td>02/29/12</td> <td>07/17/12</td> <td>-139</td> </tr> <tr> <td>Milestone 5 - System Assurance Complete</td> <td>02/28/13</td> <td>02/28/13</td> <td>07/26/13</td> <td>-148</td> </tr> <tr> <td>Milestone 6 - Landscape and Planting Maintenance and Warranty</td> <td>02/28/14</td> <td>02/28/14</td> <td>06/26/14</td> <td>-118</td> </tr> <tr> <td>Option C - Undergrounding of DWP Power line at Lassen Street</td> <td>05/30/10</td> <td>05/30/10</td> <td>12/6/2010 A</td> <td>-190</td> </tr> </tbody> </table>		Contract Milestones	Original Contract	Current Contract	Forecast (see note above)	Calendar Day Variance	Milestone 1 - Contract Substantial Completion	02/29/12	02/29/12	06/27/12	-119	Milestone 2 - Complete Universal Fare System Requirements	11/01/11	11/01/11	03/07/12	-127	Milestone 3 - Elect/Communication Requirements Complete	01/30/12	01/30/12	06/04/12	-126	Milestone 4 - Passenger Information System Testing Complete	02/29/12	02/29/12	07/17/12	-139	Milestone 5 - System Assurance Complete	02/28/13	02/28/13	07/26/13	-148	Milestone 6 - Landscape and Planting Maintenance and Warranty	02/28/14	02/28/14	06/26/14	-118	Option C - Undergrounding of DWP Power line at Lassen Street	05/30/10	05/30/10	12/6/2010 A	-190	<p style="text-align: center;">PERCENT COMPLETE from March 1, 2010 to January 27, 2012</p>  <p style="text-align: center;">Percent Complete Progress</p> <p style="text-align: center;"><i>Construction physical percent complete excludes mobilization and general requirements</i></p>			
Contract Milestones	Original Contract	Current Contract	Forecast (see note above)	Calendar Day Variance																																									
Milestone 1 - Contract Substantial Completion	02/29/12	02/29/12	06/27/12	-119																																									
Milestone 2 - Complete Universal Fare System Requirements	11/01/11	11/01/11	03/07/12	-127																																									
Milestone 3 - Elect/Communication Requirements Complete	01/30/12	01/30/12	06/04/12	-126																																									
Milestone 4 - Passenger Information System Testing Complete	02/29/12	02/29/12	07/17/12	-139																																									
Milestone 5 - System Assurance Complete	02/28/13	02/28/13	07/26/13	-148																																									
Milestone 6 - Landscape and Planting Maintenance and Warranty	02/28/14	02/28/14	06/26/14	-118																																									
Option C - Undergrounding of DWP Power line at Lassen Street	05/30/10	05/30/10	12/6/2010 A	-190																																									

CONSTRUCTION PHOTOGRAPHS



New Canoga Station platforms at interface with existing Metro Orange Line.



Lassen Bridge paving.