



# Metro Orange Line Extension

## QUARTERLY PROJECT STATUS REPORT



10-1265CMC ©2010 LACMTA

## TABLE OF CONTENTS

	Page No.
Project Overview.....	1
Management Issues.....	1
Project Status	
• Project Scope.....	2
• Schedule	
○ Schedule Narrative .....	3
○ Summary Schedule.....	4
• Project Cost Status and Analysis.....	5
• Financial/Grant Status.....	6
• Staffing.....	7-9
• Real Estate.....	10
• Quality Assurance.....	10
• Environmental.....	10
• Community Relations.....	11
• Art Development.....	11
• Safety.....	12
• Third Party.....	12
• Contract C0943 Status.....	13
• Construction Photographs.....	14-16

## **PROJECT OVERVIEW**

*The Metro Orange Line (MOL) Extension Project is a four-mile extension of the Metro Orange Line extending from the Canoga park-and-ride lot to the Chatsworth Metrolink Station. The Project includes: busway, new station platforms at the Canoga park-and-ride lot, new stations at Sherman Way (with park-and-ride), Roscoe Boulevard, Nordhoff Street, and the Chatsworth Metrolink Station (with park-and-ride); grade-separation structure over active railroad tracks and Lassen Street (Lassen bridge) providing direct access into the Chatsworth Metrolink Station; Los Angeles River and Santa Susana Wash bridge crossings; and satellite bus parking facility. The project also includes street improvements, bicycle/pedestrian path, systems equipment and landscaping similar to the MOL.*

With the MTA Board adoption of the MOL Extension Project in January 2009, the Board directed staff to accelerate the completion of the Project to summer 2012. The Project opened for revenue service on June 30, 2012.

The design builder, Brutoco Engineering & Construction, Inc, is continuing to complete the following work:

- Landscaping along busway.
- Bikeway landscaping.
- Systems work.
- Modify traffic poles at three intersections.
- Marilla Street and Marilla lot improvements.

Metro Operations have completed forty-two 9200s buses required for the MOL Operations. One additional back-up bus has been completed, five are in process, to be finalized by August.

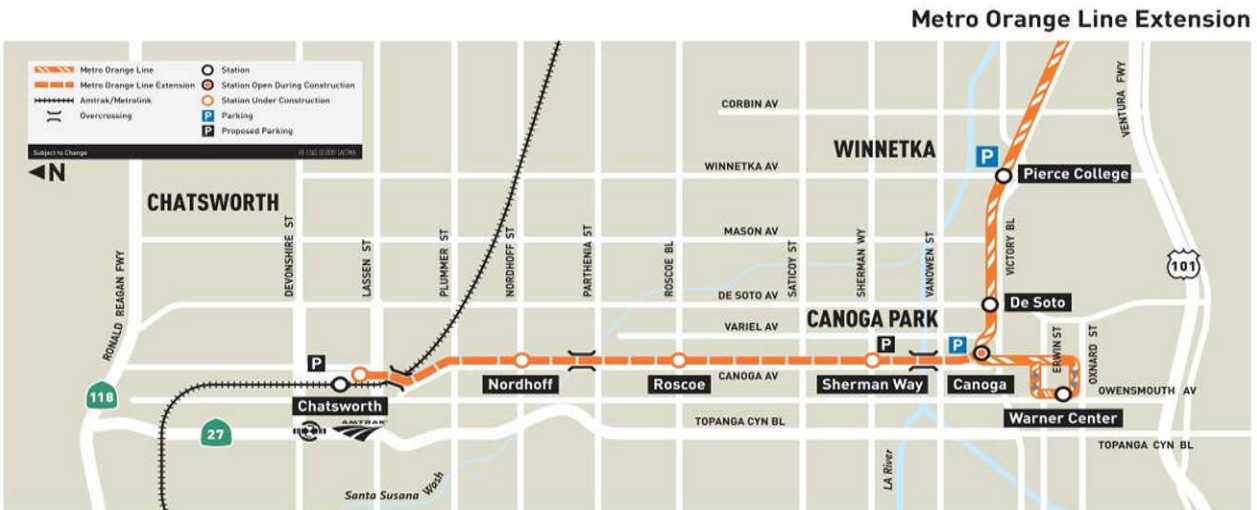
To date, commitments are \$138.8 million or 90.1% of the Current Budget. Expenditures are \$123.6 million or 80.3% of the \$154.0 million Current Budget. Design-builder's final design percent complete is 99.9% and construction physical percent complete is 96.0%.

## **MANAGEMENT ISSUES**

**Concern No. 1:** Design Builder's Contract Completion Milestones.

**Status/Action** Although Revenue Service for the Project began June 30, 2012, not all contractual scope of work has been completed by the Design Builder.

**PROJECT SCOPE**



**C0943: Metro Orange Line Extension (MOL Ext)** is a design-build contract to construct the majority of the Project scope of work. This contract will include design and construction of busway, new stations at Sherman Way (with park-and-ride), Roscoe Boulevard, Nordhoff Street, and Chatsworth Metrolink Station (with park-and-ride). The existing MOL Canoga park-and-ride lot will be modified with new station platforms. In addition, the contractor will design and construct approaches to the Lassen bridge, a bridge over the Los Angeles River, a smaller bridge over the Santa Susana Wash, street improvements, bicycle/pedestrian path, satellite bus parking facility, landscaping, systems equipment, and system integration and testing. In August 2009, the Lassen bridge (500' long 3-span bridge over active railroad tracks/Lassen Street) and Lassen Street Improvements were added to Contract C0943.

**C0941: North Parking Lot (Chatsworth Station)** is a construction contract for a new parking lot to be constructed north of the existing Chatsworth Metrolink Station. Completion of this lot is required before the south parking lot is modified to ensure that parking is continuously available for Metrolink patrons during construction of the MOL Extension.

**Work Order – Advance Metrolink Rail Signal Modifications, Track Realignment, and At-Grade Lassen Crossing Enhancements** is to be substantially completed by Metrolink in advance of the Design-Build Contractor commencing construction of portions of the Lassen bridge.

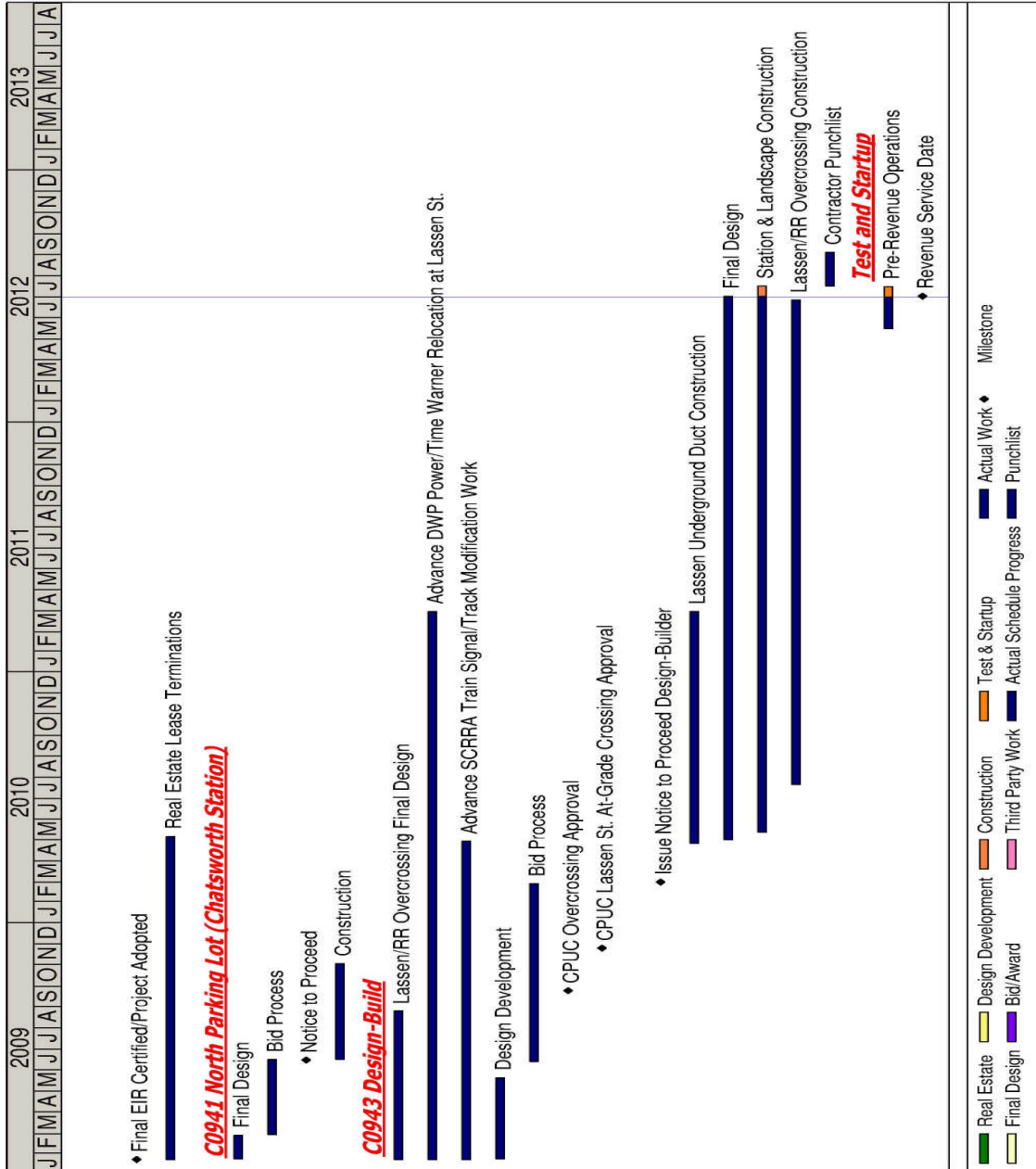
**Work Order - Advance Relocation of power, fiber optic and communication lines on Lassen Street** is to be completed by LADWP and the affected utility companies prior to the Design-Build Contractor commencing construction of portions of the Lassen bridge.

## **SCHEDULE NARRATIVE**

**Critical Path:**

With a Revenue Service Date of June 30, 2012, the longest schedule path to contract completion occurs with completing outstanding work: station systems testing, Marilla parking lot, landscaping and punchlist items.

**SUMMARY SCHEDULE**



**PROJECT COST STATUS - 800119**

**COST REPORT BY ELEMENT**

UNITS IN MILLIONS

ELEM- MENT	DESCRIPTION	ORIGINAL BUDGET	CURRENT BUDGET		COMMITMENTS		EXPENDITURES		CURRENT FORECAST			FORECAST VARIANCE
			PERIOD	TO DATE	PERIOD	TO DATE	PERIOD	TO DATE	PREVIOUS	PERIOD	TO DATE	
C	CONSTRUCTION	137.3	(27.8)	109.5	-	99.7	5.0	89.4	109.5	-	109.5	-
R	RIGHT-OF-WAY	8.0	(4.8)	3.2	0.5	2.7	0.5	2.7	3.2	-	3.2	-
V	VEHICLES / BUSES	9.9	-	9.9	-	9.9	0.2	8.3	9.9	-	9.9	-
P	PROFESSIONAL SERVICES	38.7	(9.7)	29.0	-	26.5	0.4	23.2	29.0	-	29.0	-
PC	PROJECT CONTINGENCY	21.7	(19.3)	2.4	-	-	-	-	2.4	-	2.4	-
PB	PROJECT RESERVE	-	-	-	-	-	-	-	-	-	-	-
PR	PROJECT REVENUE	-	-	-	-	-	-	-	-	-	-	-
<b>TOTAL</b>		<b>215.6</b>	<b>(61.6)</b>	<b>154.0</b>	<b>0.5</b>	<b>138.8</b>	<b>6.1</b>	<b>123.6</b>	<b>154.0</b>	<b>-</b>	<b>154.0</b>	<b>-</b>

NOTE: EXPENDITURES ARE CUMULATIVE THROUGH MAY 2012.

**PROJECT COST ANALYSIS**

**Original Budget and Current Budget:**

The Life of Project Budget for the Metro Orange Line Extension Project construction effort was adopted in January 2009 for a value of \$215.6 million. This amount does not include the prior planning and environmental development costs of \$5.6 million. The current budget has been reduced to \$154.0 million due to June 2012 Board Action approving the reprogramming of \$61.6 million in project savings to the East San Fernando Valley North/South project and other related actions.

**Current Forecast:**

The total project forecast was reduced to \$154.0 million as project nears completion.

**Commitments:**

The commitments are cumulative through June 2012. In the Right-Of-Way element there was an increase of \$0.5 million for real estate activities. The \$138.8 million in commitments to date represents 90.1% of the current budget.

**Expenditures:**

The expenditures are cumulative through May 2012. The expenditures increased by \$6.1 million this period. In the Construction element there was an increase of \$5.0 million for cost associated with the Design-Build Contract C0943, Metrolink support, third party scope of work with the City of Los Angeles and private utilities, and Metro Art Program. In the real estate element there was an increase of \$0.5 million for other real estate activities. In the Vehicle element there was an increase of \$0.2 million for midlife overhaul of existing Orange Line buses. In the Professional Services element there was an increase of \$0.4 million for costs associated with final design, construction management support, environmental consulting services, community outreach program, legal services, and MTA project administration. The \$123.6 million in expenditures to date represents 80.3% of the current budget.

**FINANCIAL/GRANT STATUS  
Project 800119 – Metro Orange Line Extension**

**JUNE 2012**

**STATUS OF FUNDS BY SOURCE**

\$ in millions

SOURCE	(A)	(B)	(C)	(D) (D/B)		(E) (E/B)		(F) (F/B)	
	ORIGINAL	TOTAL	TOTAL	COMMITMENTS		EXPENDITURES		BILLED to FUNDING	
	BUDGET	FUNDS	FUNDS	\$	%	\$	%	\$	%
	(1)	ANTICIPATED (2)	AVAILABLE					SOURCE	
PROP 1B FUNDS-PTMISEA*	68.0	70.0	70.0	70.0	100%	70.0	100%	70.0	100%
PROP 1B FUNDS-SLTPP**	73.8	40.3	40.3	34.4	85%	26.8	67%	26.2	65%
PROP C 25%	73.8	43.7	38.0	34.4	79%	26.8	61%	26.2	60%
<b>TOTAL</b>	<b>215.6</b>	<b>154.0</b>	<b>148.3</b>	<b>138.8</b>	<b>90.2%</b>	<b>123.6</b>	<b>80.3%</b>	<b>122.4</b>	<b>79.5%</b>

(1) Based on January 2009 MTA Board adoption of Life of Project (LOP) Budget. LOP Budget doesn't include planning and environmental costs.

(2) Based on June 2012 Metro Board Report.

\* PTMISEA: Public Transportation Modernization and Improvement Surface Enhancement Account

\*\* SLTPP: State - Local Transportation Partnership Program

NOTE: Expenditures are cumulative through May 2012.

**STATUS OF FUNDS ANTICIPATED**

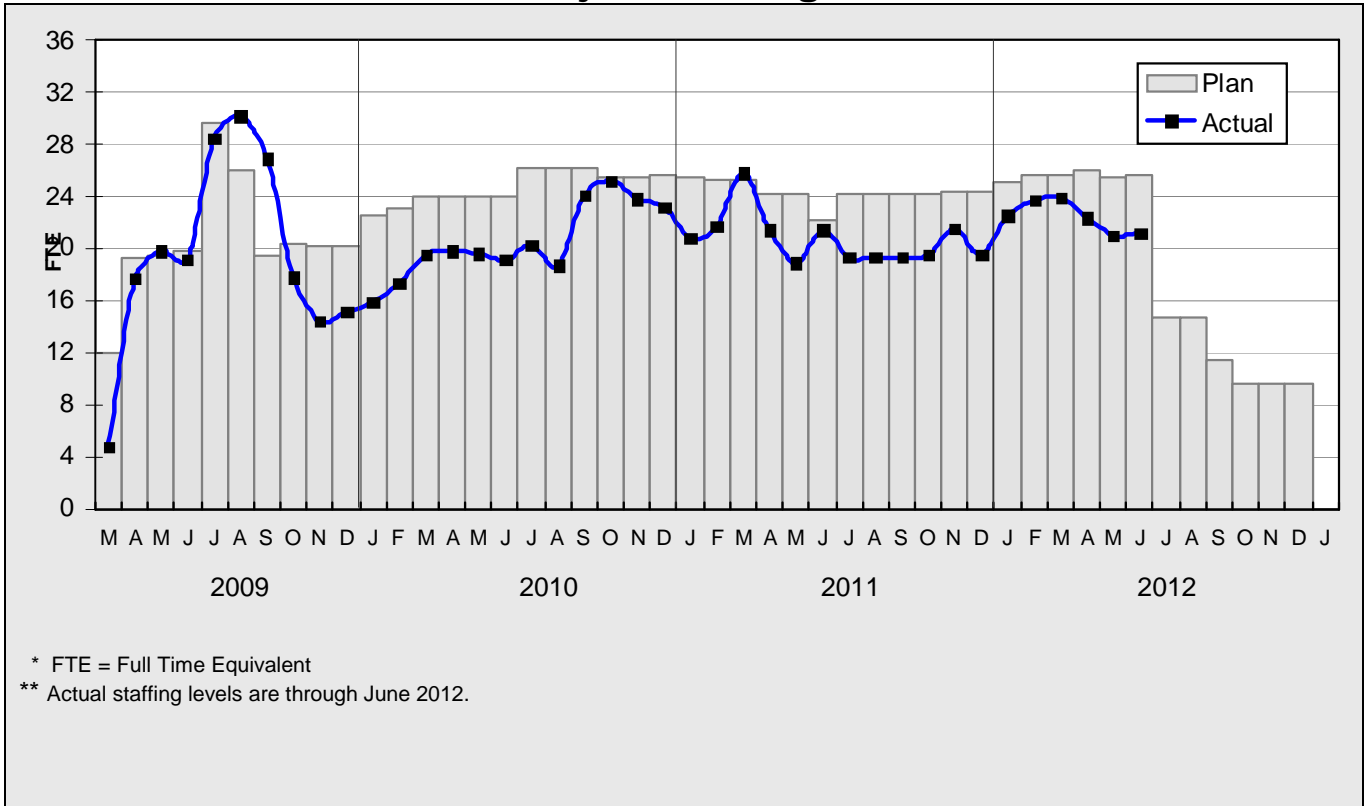
**STATE PROP 1B – PTMISEA:** MTA submitted a request to Caltrans to allocate \$29.5 million of FY10 funds to the Project. The allocation request was approved in October 2011. Funds are available for drawdown.

**STATE PROP 1B – SLTPP:** At the January 2011 Meeting, the CTC approved MTA's December 2009 \$14.7M and May 2010 \$34.5M allocation requests. Both Grants are available for drawdown. At the October 2011 CTC Meeting, MTA's \$13.5 million allocation request was approved. The grant is available for drawdown. In June 2012, the Metro Board approved the reprogramming of \$32.5 million of State Prop 1B SLTPP funds to the San Fernando Valley North/South Project.

**PROP C 25%:** Metro FY12 Funding Matrix earmarks \$38M of Prop C 25% Streets and Highways Funds for this project.



**STAFFING STATUS  
Total Project Staffing - FTES**



**Total Project Staffing**

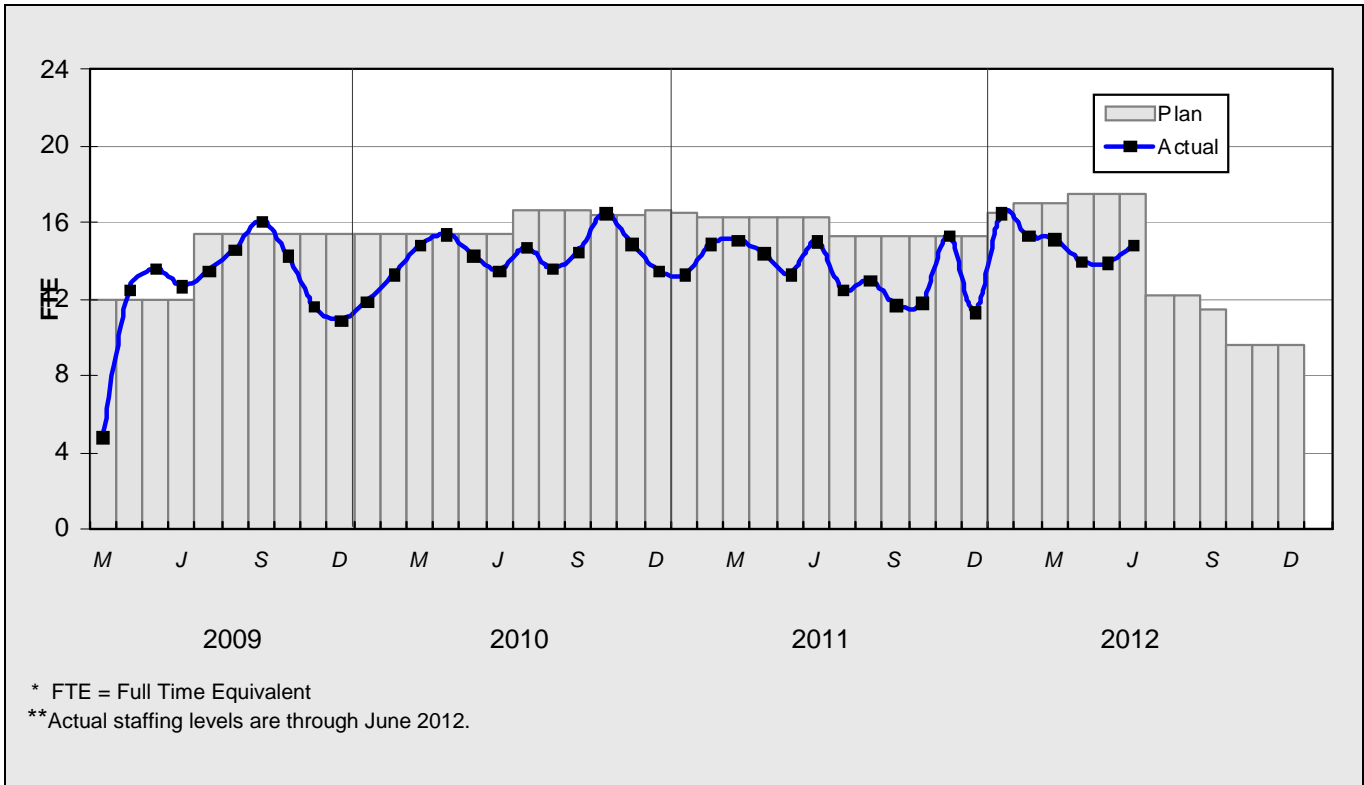
The overall FY12 Total Project Staffing plan averages 24.9 FTE's per month.

For June 2012, there were a total of 14.8 FTE's for MTA's Project Administration staff and 6.4 FTE's for consulting staff. The total project staffing was 21.2 FTE's for June 2012.

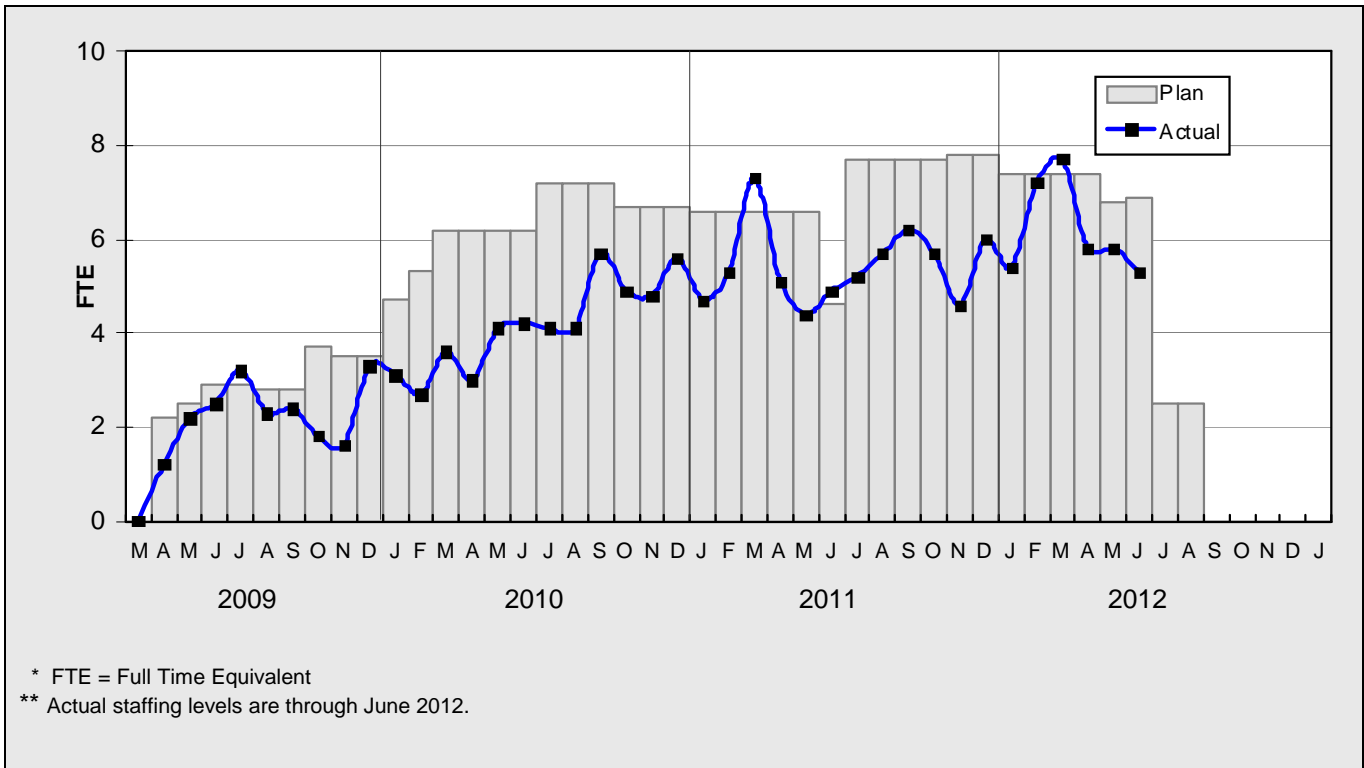
Staffing for the Central Maintenance Department's midlife overhaul of Orange Line buses are not included as an FTE but are included within the vehicle cost element (see Page 6 Element V).

**STAFFING STATUS**

**MTA STAFFING - FTES**

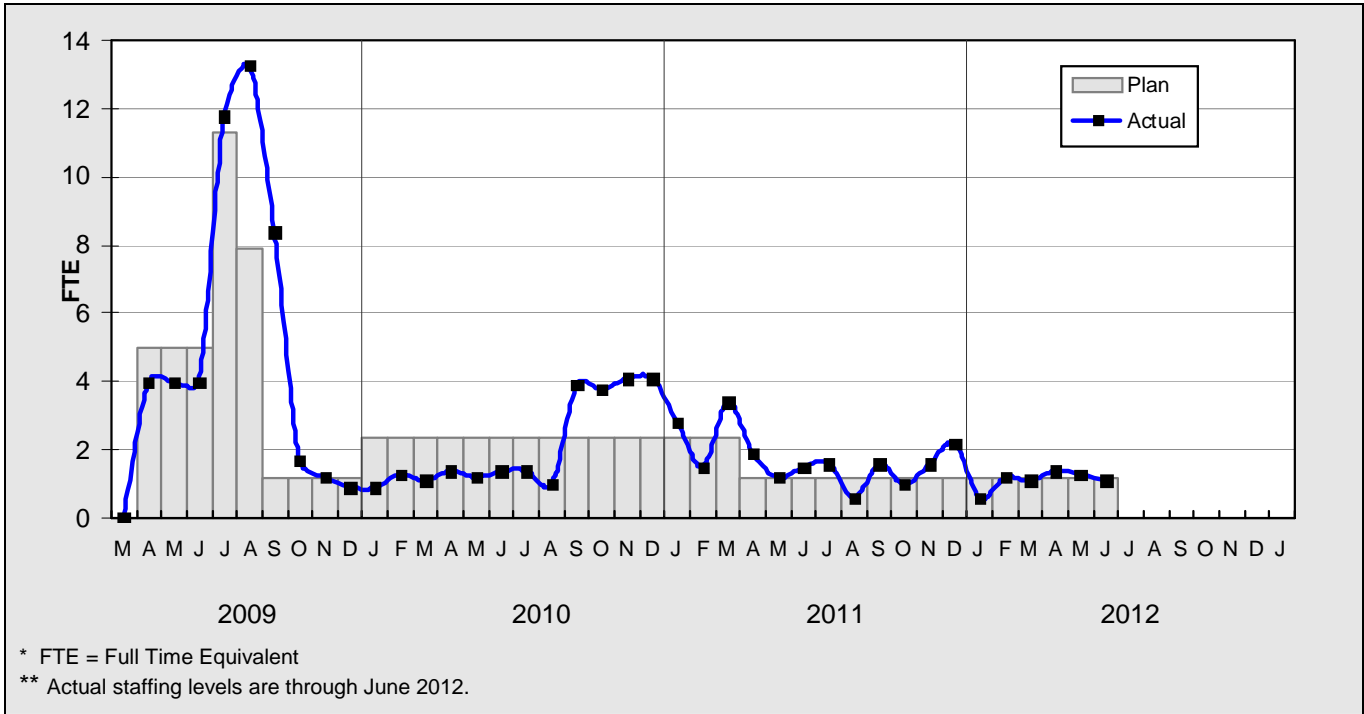


**CONSTRUCTION MANAGEMENT  
SUPPORT SERVICES CONSULTANT - FTES**



## STAFFING STATUS

### ENGINEERING SERVICES CONSULTANT



## **REAL ESTATE STATUS**

### **LEASES**

- Real Estate is working with Jacobi to coordinate the relocation of a portion of the boundry wall on MTA and City property. Working with the City to obtain permit for the wall.

	Total Leases	Total Leases to be Terminated	Total Leases to Remain with Modified Lease	Leases to Remain Under Existing Lease	Relocations Completed	Total Signboards Removed
Leases	82	78	3	1	52	26

## **QUALITY ASSURANCE STATUS**

- Attended weekly job and readiness review meetings with Brutoco.
- Monitored the construction work along the alignment.

## **ENVIRONMENTAL STATUS**

- Began to receive noise and vibration complaints from residents along the alignment. Metro issued a Task Order for Noise Monitoring at the residents location.
- Working with Diversified landscaping to target areas along the Busway that require attention for incomplete work, dead plants and removal of weeds.

## **COMMUNITY RELATIONS STATUS**

- Distributed 1,000 construction notices for Chatsworth Metrolink Station Park and Ride lot partial closure, 500 construction notices for Canoga Station Park and Ride Lot closure, and 30,000 construction notices for Lassen Street and Old Deport Road closure and grind and cap pave.
- Conducted field visit with the management of the Chatsworth Mobile Home Park regarding the repaving of Lassen Street and access to the park.
- Coordinated graffiti abatement along the Metro Right-of-Way.
- Participated in meetings with Communications, event vendors, Chatsworth Business Improvement and Chatsworth Chamber of Commerce regarding grand opening celebrations.
- Held project briefing for the Woodland Hills/Tarzana Chamber of Commerce.
- Participated in tour of the alignment for Councilman Englander's office.

## **ART DEVELOPMENT STATUS**

- Achieved 100% completion of porcelain enamel art panel installation at Canoga, Sherman Way, Roscoe, Nordoff and Chatsworth Stations.
- Achieved 100% completion of Orange Line Extension Art Guide.
- Installed 100% of artwork plaques at all stations.

**SAFETY STATUS**

**CO943:**


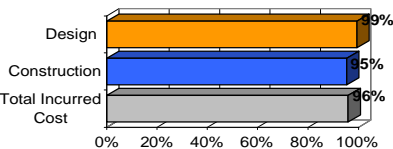
- Participated in weekly progress and Tool-box Safety Meeting and meeting with IPO and Contractor to discuss vehicular use along the Bus Way to ensure traffic safety.
- Monitored construction activities on a daily basis including weekends to ensure safety compliance with contract specifications.
- Monitored community residents to keep them from entering the construction zones.
- Held meeting with the IPO and contractor management to discuss traffic/pedestrian safety during start-up of revenue operations.
- Brutoco and their subcontractors reported zero incidents and 21,786 work hours for the month of June 2012. Total project to date work hours are 437,352 and six recordable incidents. The recordable incident rate is 2.2. The National Average is 3.8.

**THIRD PARTY AGREEMENT STATUS**

Third Party	Type of Agreement	Forecast Execution Date	Required Need Date	Status/ Comments
City of Los Angeles	Licensing Agreement	5/12	N/A	Executed agreement on May 14, 2012.
City of Los Angeles	O & M Agreement For Chatsworth Station	8/12	N/A	MTA and DOT continue to meet to resolve outstanding issues prior to execution of agreement.

**Note: For a list of all Third Party Agreements, that have been executed, please see the May 2010 Monthly Project Status Report.**

**CONTRACT C0943 STATUS**

<p><b>Design Builder Contractor:</b> Brutoco, Engineering and Construction, Inc.</p>	<p><b>Contract No.:</b> C0943 <b>Status as of:</b> June 29, 2012</p>																																									
<p><b>Progress/Work Completed:</b> - See Project Overview page 1.</p>	<p><b>Areas of Concern:</b> - See Management Issues page 1.</p>																																									
<p><b>Schedule Assessment:</b> The forecast dates for Contract Milestones shown in the table below are based on the current June12 Schedule Update. MTA rejected this Update and will continue to work with the design builder to complete outstanding contractual work.</p>	<p><b>Cost Assessment:</b> The current construction contract cost forecast is \$87.25 million and is within the Board authorized budget.  The Design Builder submitted their 28th payment application in the approved amount of \$1.3 million.  Increase in costs to the construction contract award value are a result of design enhancements and change orders.</p>																																									
<p><b>Schedule Summary:</b></p> <table border="0"> <tr><td>1. Date of Award:</td><td>02/10/10</td></tr> <tr><td>2. Notice to Proceed:</td><td>03/01/10</td></tr> <tr><td>3. Original Substantial Completion Duration:</td><td>730</td></tr> <tr><td>4. Current Substantial Completion Duration:</td><td>837</td></tr> <tr><td>5. Elapsed Time from NTP:</td><td>851</td></tr> </table>	1. Date of Award:	02/10/10	2. Notice to Proceed:	03/01/10	3. Original Substantial Completion Duration:	730	4. Current Substantial Completion Duration:	837	5. Elapsed Time from NTP:	851	<p><b>Cost Summary:</b> <span style="float: right;"><b>\$ In 000's</b></span></p> <table border="0"> <tr><td>1. Award Value:</td><td>82.49</td></tr> <tr><td>2. Executed Modifications:</td><td>4.30</td></tr> <tr><td>3. Approved Change Orders:</td><td>0.46</td></tr> <tr><td>4. Current Contract Value (1 + 2 + 3):</td><td>87.25</td></tr> <tr><td>5. Incurred Cost:</td><td>83.66</td></tr> </table>		1. Award Value:	82.49	2. Executed Modifications:	4.30	3. Approved Change Orders:	0.46	4. Current Contract Value (1 + 2 + 3):	87.25	5. Incurred Cost:	83.66																				
1. Date of Award:	02/10/10																																									
2. Notice to Proceed:	03/01/10																																									
3. Original Substantial Completion Duration:	730																																									
4. Current Substantial Completion Duration:	837																																									
5. Elapsed Time from NTP:	851																																									
1. Award Value:	82.49																																									
2. Executed Modifications:	4.30																																									
3. Approved Change Orders:	0.46																																									
4. Current Contract Value (1 + 2 + 3):	87.25																																									
5. Incurred Cost:	83.66																																									
<table border="1"> <thead> <tr> <th>Contract Milestones</th> <th>Original Contract</th> <th>Current Contract</th> <th>Forecast (see note above)</th> <th>Calendar Day Variance</th> </tr> </thead> <tbody> <tr><td>Milestone 1 - Contract Substantial Completion</td><td>02/29/12</td><td>06/01/12</td><td>08/06/12</td><td>-66</td></tr> <tr><td>Milestone 2 - Complete Universal Fare System Requirements</td><td>11/01/11</td><td>04/01/12</td><td>4/24/2012 A</td><td>-16</td></tr> <tr><td>Milestone 3 - Elect/Communication Requirements Complete</td><td>01/30/12</td><td>05/21/12</td><td>07/09/12</td><td>-49</td></tr> <tr><td>Milestone 4 - Passenger Information System Testing Complete</td><td>02/29/12</td><td>05/21/12</td><td>08/06/12</td><td>-77</td></tr> <tr><td>Milestone 5 - System Assurance Complete</td><td>02/28/13</td><td>04/15/13</td><td>07/01/13</td><td>-77</td></tr> <tr><td>Milestone 6 - Landscape and Planting Maintenance and Warranty</td><td>02/28/14</td><td>04/15/14</td><td>07/07/14</td><td>-83</td></tr> <tr><td>Option C - Undergrounding of DWP Power line at Lassen Street</td><td>05/30/10</td><td>05/30/10</td><td>12/6/2010 A</td><td>-190</td></tr> </tbody> </table>	Contract Milestones	Original Contract	Current Contract	Forecast (see note above)	Calendar Day Variance	Milestone 1 - Contract Substantial Completion	02/29/12	06/01/12	08/06/12	-66	Milestone 2 - Complete Universal Fare System Requirements	11/01/11	04/01/12	4/24/2012 A	-16	Milestone 3 - Elect/Communication Requirements Complete	01/30/12	05/21/12	07/09/12	-49	Milestone 4 - Passenger Information System Testing Complete	02/29/12	05/21/12	08/06/12	-77	Milestone 5 - System Assurance Complete	02/28/13	04/15/13	07/01/13	-77	Milestone 6 - Landscape and Planting Maintenance and Warranty	02/28/14	04/15/14	07/07/14	-83	Option C - Undergrounding of DWP Power line at Lassen Street	05/30/10	05/30/10	12/6/2010 A	-190	<p><b>PERCENT COMPLETE</b> <i>from March 1, 2010 to June 29, 2012</i></p>  <p><b>Percent Complete Progress</b></p> <p><i>Construction physical percent complete excludes mobilization and general requirements</i></p>	
Contract Milestones	Original Contract	Current Contract	Forecast (see note above)	Calendar Day Variance																																						
Milestone 1 - Contract Substantial Completion	02/29/12	06/01/12	08/06/12	-66																																						
Milestone 2 - Complete Universal Fare System Requirements	11/01/11	04/01/12	4/24/2012 A	-16																																						
Milestone 3 - Elect/Communication Requirements Complete	01/30/12	05/21/12	07/09/12	-49																																						
Milestone 4 - Passenger Information System Testing Complete	02/29/12	05/21/12	08/06/12	-77																																						
Milestone 5 - System Assurance Complete	02/28/13	04/15/13	07/01/13	-77																																						
Milestone 6 - Landscape and Planting Maintenance and Warranty	02/28/14	04/15/14	07/07/14	-83																																						
Option C - Undergrounding of DWP Power line at Lassen Street	05/30/10	05/30/10	12/6/2010 A	-190																																						

## CONSTRUCTION PHOTOGRAPHS



VIP event on June 29, 2012 – Ribbon cutting ceremony at Sherman Way Station.



VIP event on June 29, 2012 – Bus banner cutting over Lassen Bridge entering Chatsworth Station.



**CONSTRUCTION PHOTOGRAPHS**



Revenue Service commences on June 30, 2012 – Chatsworth Station.



Revenue Service commences on June 30, 2012 – Chatsworth Station.

**CONSTRUCTION PHOTOGRAPHS**



Revenue Service commences on June 30, 2012 – Canoga Station.



Revenue Service commences on June 30, 2012 - Canoga Station.