



Metro Orange Line Extension

QUARTERLY PROJECT STATUS REPORT



10-1265CMC ©2010 LACMTA

TABLE OF CONTENTS

	Page No.
Project Overview.....	1
Management Issues.....	1
Project Status	
• Project Scope.....	2
• Schedule	
○ Schedule Narrative	3
○ Summary Schedule.....	4
• Project Cost Status and Analysis.....	5
• Financial/Grant Status.....	6
• Staffing.....	7-9
• Real Estate.....	10
• Quality Assurance.....	10
• Environmental.....	10
• Community Relations.....	11
• Art Development.....	11
• Safety.....	12
• Third Party.....	12
• Contract C0943 Status.....	13
• Construction Photographs.....	14-16

PROJECT OVERVIEW

The Metro Orange Line (MOL) Extension Project is a four-mile extension of the Metro Orange Line extending from the Canoga park-and-ride lot to the Chatsworth Metrolink Station. The Project includes: busway, new station platforms at the Canoga park-and-ride lot, new stations at Sherman Way (with park-and-ride), Roscoe Boulevard, Nordhoff Street, and the Chatsworth Metrolink Station (with park-and-ride); grade-separation structure over active railroad tracks and Lassen Street (Lassen bridge) providing direct access into the Chatsworth Metrolink Station; Los Angeles River and Santa Susana Wash bridge crossings; and satellite bus parking facility. The project also includes street improvements, bicycle/pedestrian path, systems equipment and landscaping similar to the MOL.

With the MTA Board adoption of the MOL Extension Project in January 2009, the Board directed staff to accelerate the completion of the Project to summer 2012. The Project opened for revenue service on June 30, 2012.

The design builder, Brutoco Engineering & Construction, Inc, is continuing to complete the following work:

- Landscaping (busway, parking lots, bikeway, CMHP and Marilla lot).
- Systems work.
- Fencing
- Modify traffic poles at three intersections (completed).
- Marilla Street improvements.
- Marilla bus parking lot (inc. modular building and canopy).
- Signage
- Restroom and kiosk at Chatsworth Station.
- Final acceptance of city facilities.
- Roscoe pedestrian path.
- Pedestrian gates at Lassen at-grade crossing.
- Punch list items.
- Non conforming work.

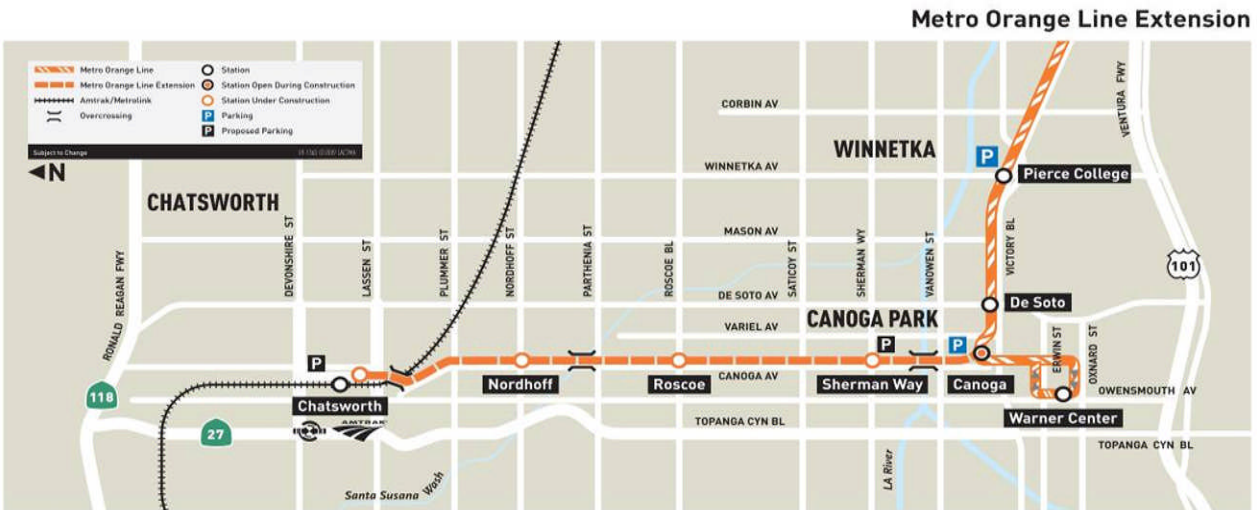
To date, commitments are \$138.4 million or 89.9% of the Current Budget. Expenditures are \$131.0 million or 85.1% of the \$154.0 million Current Budget. Design-builder's final design percent complete is 100% and construction physical percent complete is 97.4%.

MANAGEMENT ISSUES

Concern No. 1: Design Builder's Contract Completion Milestones.

Status/Action Although Revenue Service for the Project began June 30, 2012, not all contractual scope of work has been completed by the Design Builder.

PROJECT SCOPE



C0943: Metro Orange Line Extension (MOL Ext) is a design-build contract to construct the majority of the Project scope of work. This contract will include design and construction of busway, new stations at Sherman Way (with park-and-ride), Roscoe Boulevard, Nordhoff Street, and Chatsworth Metrolink Station (with park-and-ride). The existing MOL Canoga park-and-ride lot will be modified with new station platforms. In addition, the contractor will design and construct approaches to the Lassen bridge, a bridge over the Los Angeles River, a smaller bridge over the Santa Susana Wash, street improvements, bicycle/pedestrian path, satellite bus parking facility, landscaping, systems equipment, and system integration and testing. In August 2009, the Lassen bridge (500' long 3-span bridge over active railroad tracks/Lassen Street) and Lassen Street Improvements were added to Contract C0943.

C0941: North Parking Lot (Chatsworth Station) is a construction contract for a new parking lot to be constructed north of the existing Chatsworth Metrolink Station. Completion of this lot is required before the south parking lot is modified to ensure that parking is continuously available for Metrolink patrons during construction of the MOL Extension.

Work Order – Advance Metrolink Rail Signal Modifications, Track Realignment, and At-Grade Lassen Crossing Enhancements is to be substantially completed by Metrolink in advance of the Design-Build Contractor commencing construction of portions of the Lassen bridge.

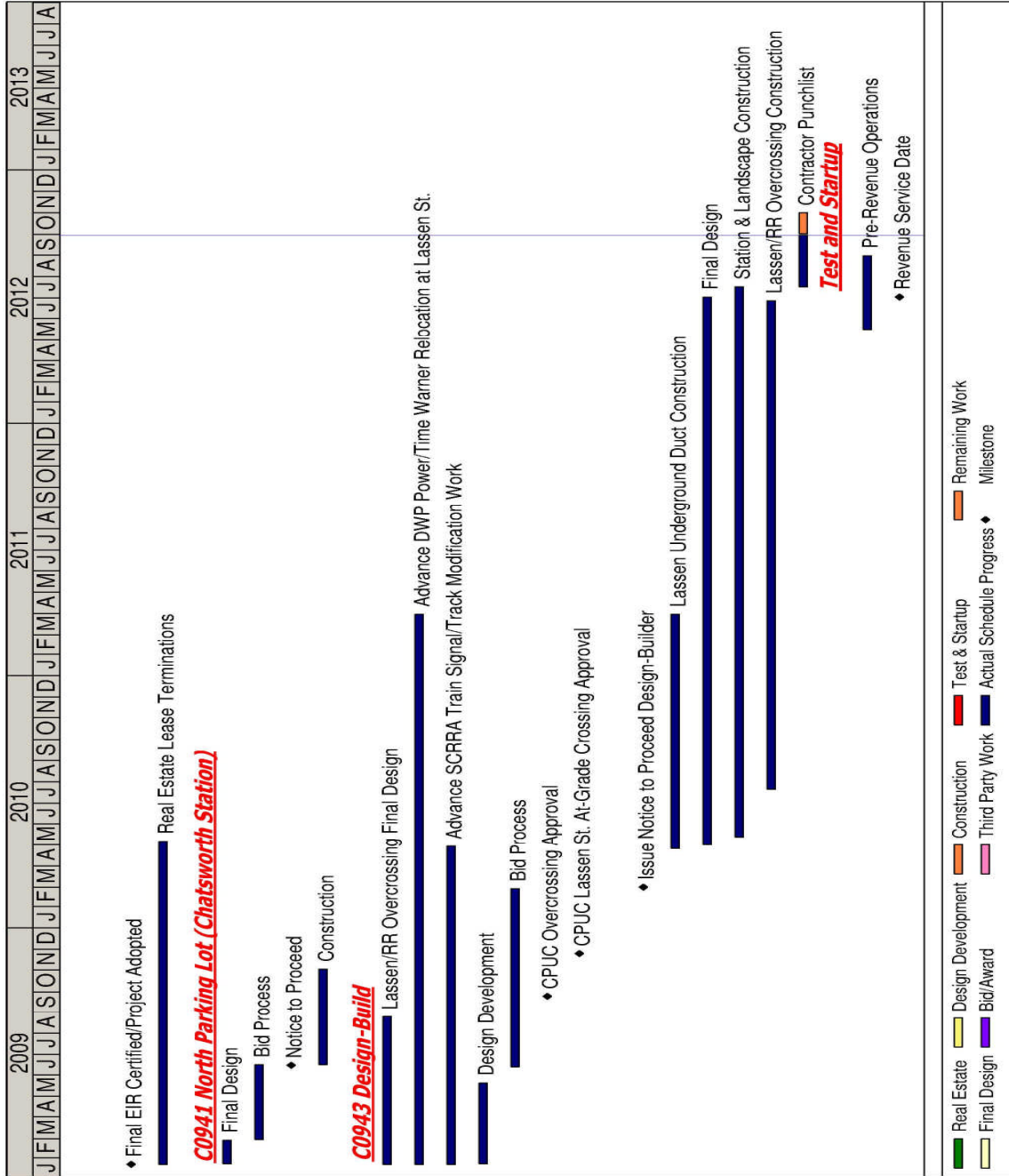
Work Order - Advance Relocation of power, fiber optic and communication lines on Lassen Street is to be completed by LADWP and the affected utility companies prior to the Design-Build Contractor commencing construction of portions of the Lassen bridge.

SCHEDULE NARRATIVE

Critical Path:

With a Revenue Service Date of June 30, 2012, the longest schedule path to contract completion occurs with completing punchlist work: systems testing, Marilla parking lot, and landscaping.

SUMMARY SCHEDULE



PROJECT COST STATUS - 800119

**COST REPORT BY ELEMENT
PERIOD ENDING: 30-SEP-2012
UNITS IN MILLIONS**

ELE- MENT	DESCRIPTION	ORIGINAL BUDGET	CURRENT BUDGET		COMMITMENTS		EXPENDITURES		CURRENT FORECAST		FORECAST VARIANCE
			PERIOD	TO DATE	PERIOD	TO DATE	PERIOD	TO DATE	PERIOD	TO DATE	
C	CONSTRUCTION	137.3	-	109.5	0.1	99.8	5.7	94.8	-	109.5	-
R	RIGHT-OF-WAY	8.0	-	3.2	-	2.7	-	2.7	(0.5)	2.7	(0.5)
V	VEHICLES / BUSES	9.9	-	9.9	-	9.9	0.5	9.0	-	9.9	-
P	PROFESSIONAL SERVICES	38.7	-	29.0	(0.5)	26.0	1.1	24.5	-	29.0	-
PC	PROJECT CONTINGENCY	21.7	-	2.4	-	-	-	-	0.5	2.9	0.5
PB	PROJECT RESERVE	-	-	-	-	-	-	-	-	-	-
PR	PROJECT REVENUE	-	-	-	-	-	-	-	-	-	-
TOTAL		215.6	-	154.0	(0.4)	138.4	7.3	131.0	-	154.0	-

NOTE: EXPENDITURES ARE CUMULATIVE THROUGH SEPTEMBER 2012.

PROJECT COST ANALYSIS

Original Budget and Current Budget:

The Life of Project Budget for the Metro Orange Line Extension Project construction effort was adopted in January 2009 for a value of \$215.6 million. This amount does not include the prior planning and environmental development costs of \$6.1 million. The current budget has been reduced to \$154.0 million due to June 2012 Board Action approving the reprogramming of \$61.6 million in project savings to the East San Fernando Valley North/South project and other related actions.

Current Forecast: The total project forecast remains the same at \$154.0 million.

Commitments:

The commitments are cumulative through September 2012. In the construction element there was an increase of \$0.1 million primarily for executed contract modifications associated with the Design-Build Contract C0943. In the professional services element there was a decrease of \$0.5 million due to adjustments for charges related to project administration. The \$138.4 million in commitments to date represents 89.9% of the current budget.

Expenditures:

The expenditures are cumulative through September 2012. The expenditures increased by \$7.3 million this period. In the Construction element there was an increase of \$5.7 million for cost associated with the Design-Build Contract C0943, third party scope of work with the City of Los Angeles and private utilities, and Metro Art Program. In the Vehicle element there was an increase of \$0.5 million for midlife overhaul of existing Orange Line buses. In the Professional Services element there was an increase of \$1.1 million for costs associated with final design, construction management support, community outreach program, miscellaneous specialty services, and MTA project administration. The \$131.0 million in expenditures to date represents 85.1% of the current budget.

**FINANCIAL/GRANT STATUS
Project 800119 – Metro Orange Line Extension**

SEPTEMBER 2012

STATUS OF FUNDS BY SOURCE

\$ in millions

SOURCE	(A)	(B)	(C)	(D)	(D/B)	(E)	(E/B)	(F)	(F/B)
	ORIGINAL BUDGET (1)	TOTAL FUNDS ANTICIPATED (2)	TOTAL FUNDS AVAILABLE	COMMITMENTS \$	%	EXPENDITURES \$	%	BILLED to \$	FUNDING SOURCE %
PROP 1B FUNDS-PTMISEA*	68.0	70.0	70.0	70.0	100%	70.0	100%	70.0	100%
PROP 1B FUNDS-SLTPP**	73.8	40.3	40.3	34.2	85%	30.5	76%	27.8	69%
PROP C 25%	73.8	43.7	38.0	34.2	78%	30.5	70%	27.8	64%
TOTAL	215.6	154.0	148.3	138.4	89.9%	131.0	85.1%	125.7	81.6%

(1) Based on January 2009 MTA Board adoption of Life of Project (LOP) Budget. LOP Budget doesn't include planning and environmental costs.

(2) Based on June 2012 Metro Board Report.

* PTMISEA: Public Transportation Modernization and Improvement Surface Enhancement Account

** SLTPP: State - Local Transportation Partnership Program

NOTE: Expenditures are cumulative through September 2012.

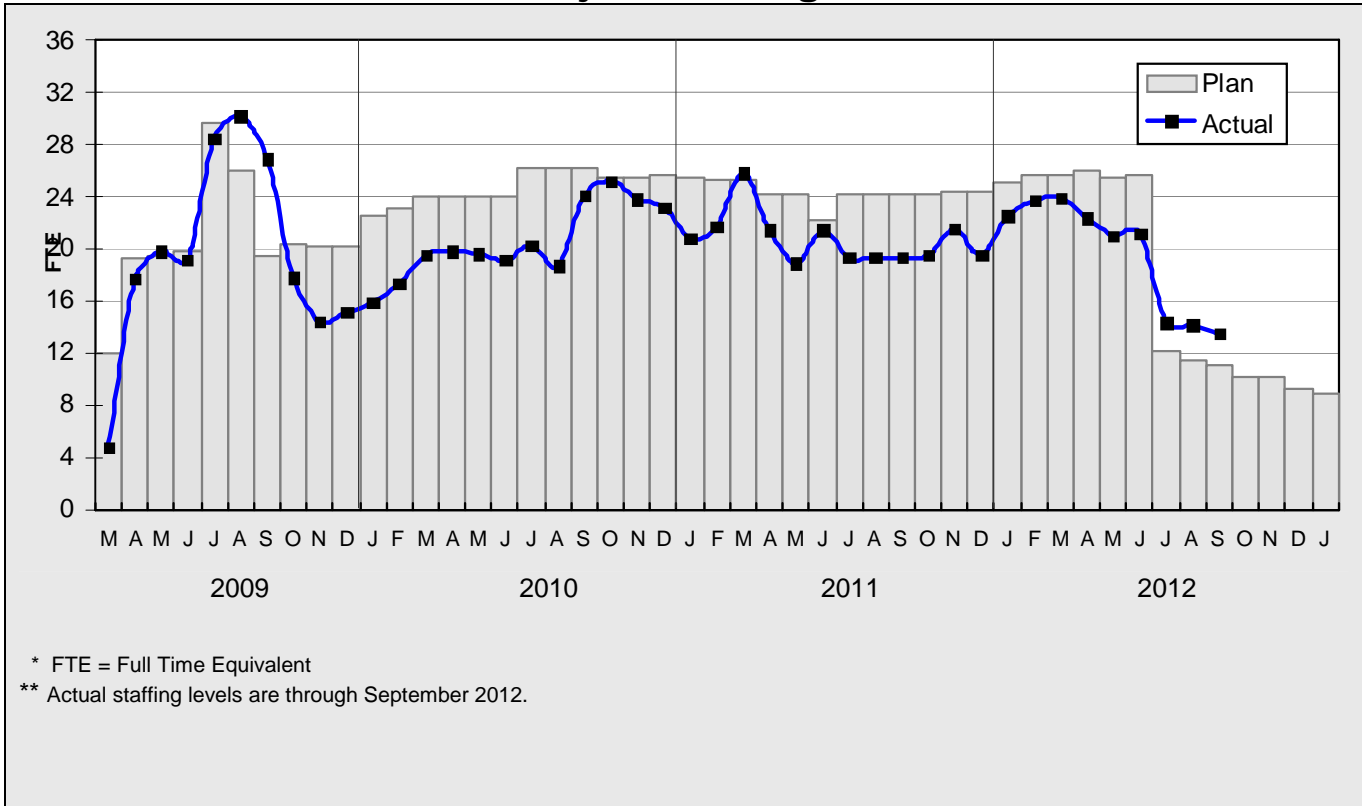
STATUS OF FUNDS ANTICIPATED

STATE PROP 1B – PTMISEA: MTA submitted a request to Caltrans to allocate \$29.5 million of FY10 funds to the Project. The allocation request was approved in October 2011. Funds are available for drawdown.

STATE PROP 1B – SLTPP: At the January 2011 Meeting, the CTC approved MTA's December 2009 \$14.7M and May 2010 \$34.5M allocation requests. Both Grants are available for drawdown. At the October 2011 CTC Meeting, MTA's \$13.5 million allocation request was approved. The grant is available for drawdown. In June 2012, the Metro Board approved the reprogramming of \$32.5 million of State Prop 1B SLTPP funds to the San Fernando Valley North/South Project.

PROP C 25%: Metro FY12 Funding Matrix earmarks \$38M of Prop C 25% Streets and Highways Funds for this project.

**STAFFING STATUS
Total Project Staffing - FTES**



Total Project Staffing

The overall FY13 Total Project Staffing plan averages 9.8 FTE's per month.

For July 2012, there were a total of 10.0 FTE's for MTA's Project Administration staff and 4.3 FTE's for consulting staff. The total project staffing was 14.3 FTE's for July 2012.

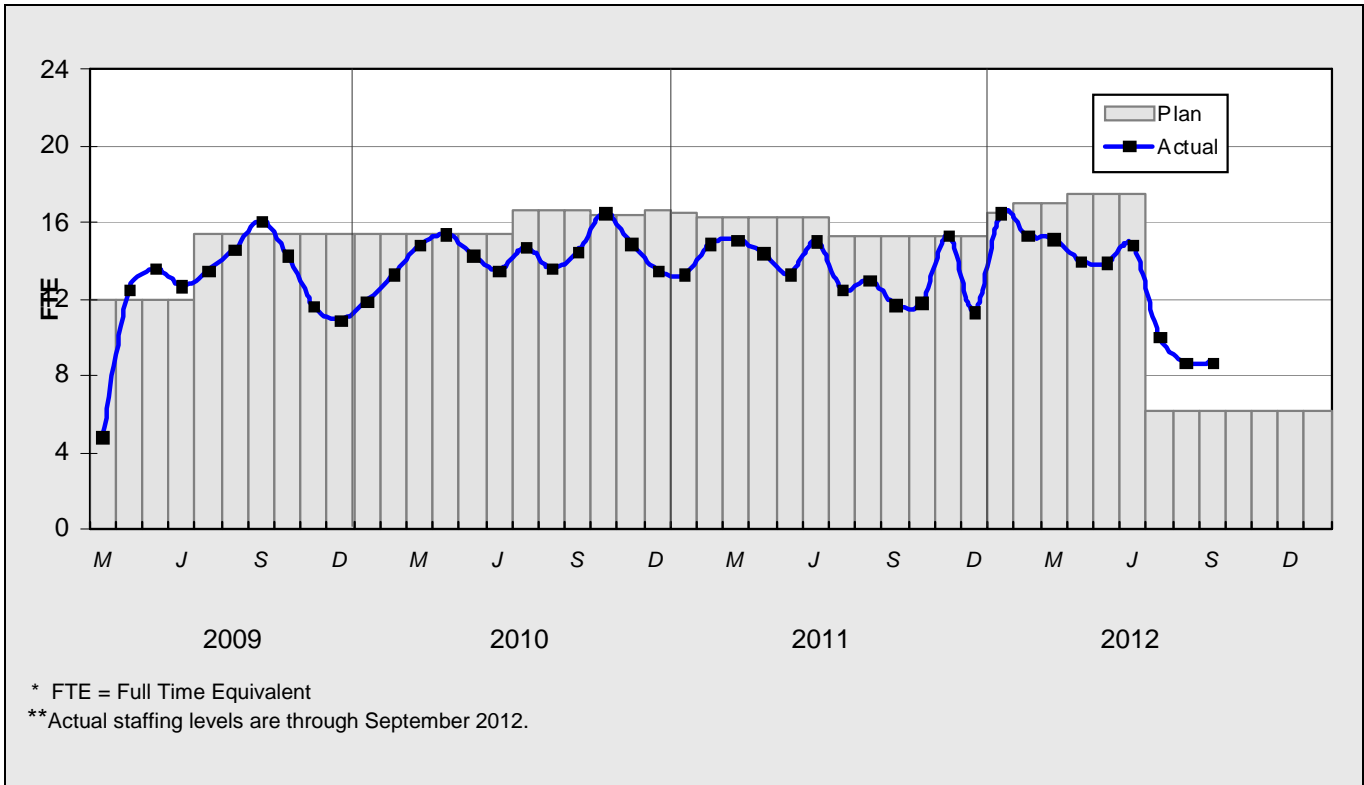
For August 2012, there were a total of 8.7 FTE's for MTA's Project Administration staff and 5.4 FTE's for consulting staff. The total project staffing was 14.1 FTE's for August 2012.

For September 2012, there were a total of 8.7 FTE's for MTA's Project Administration staff and 4.8 FTE's for consulting staff. The total project staffing was 13.5 FTE's for September 2012.

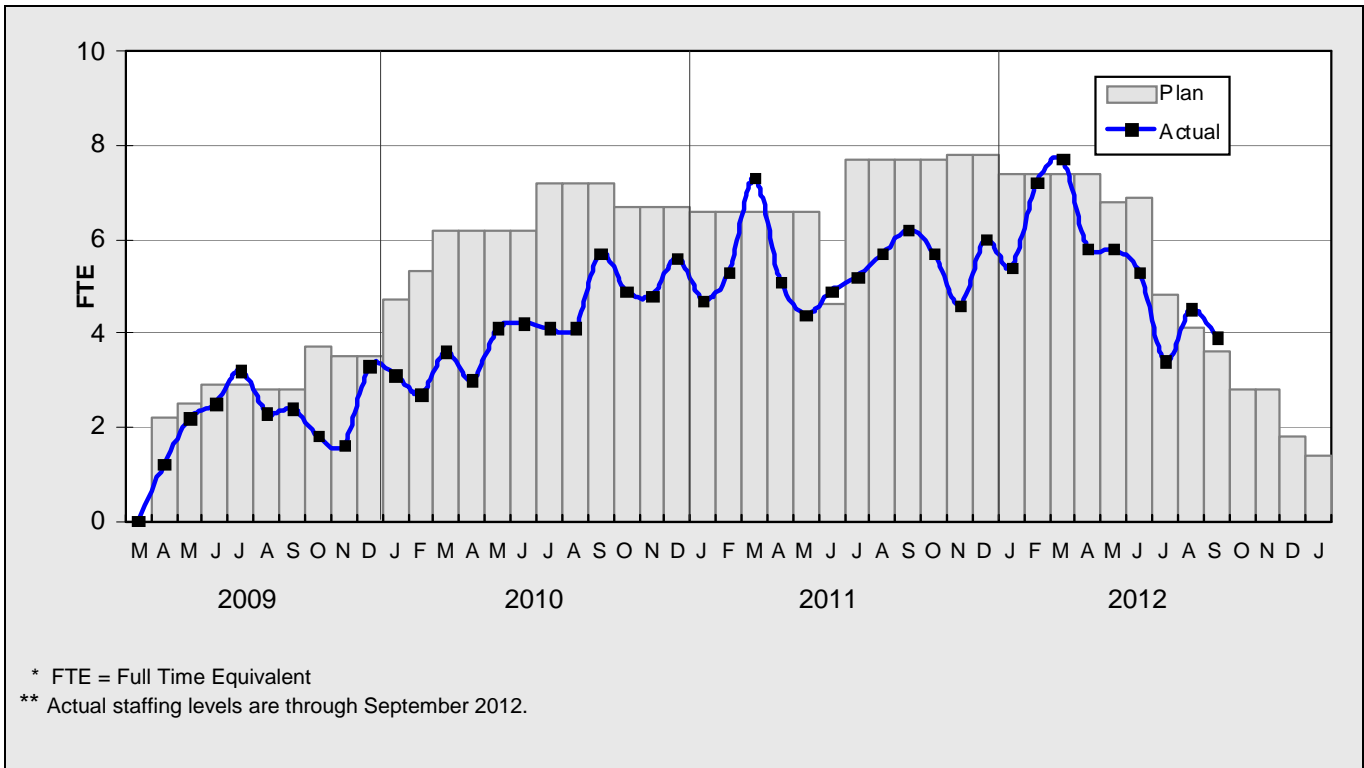
Staffing for the Central Maintenance Department's midlife overhaul of Orange Line buses are not included as an FTE but are included within the vehicle cost element (see Page 6 Element V).

STAFFING STATUS

MTA STAFFING - FTES

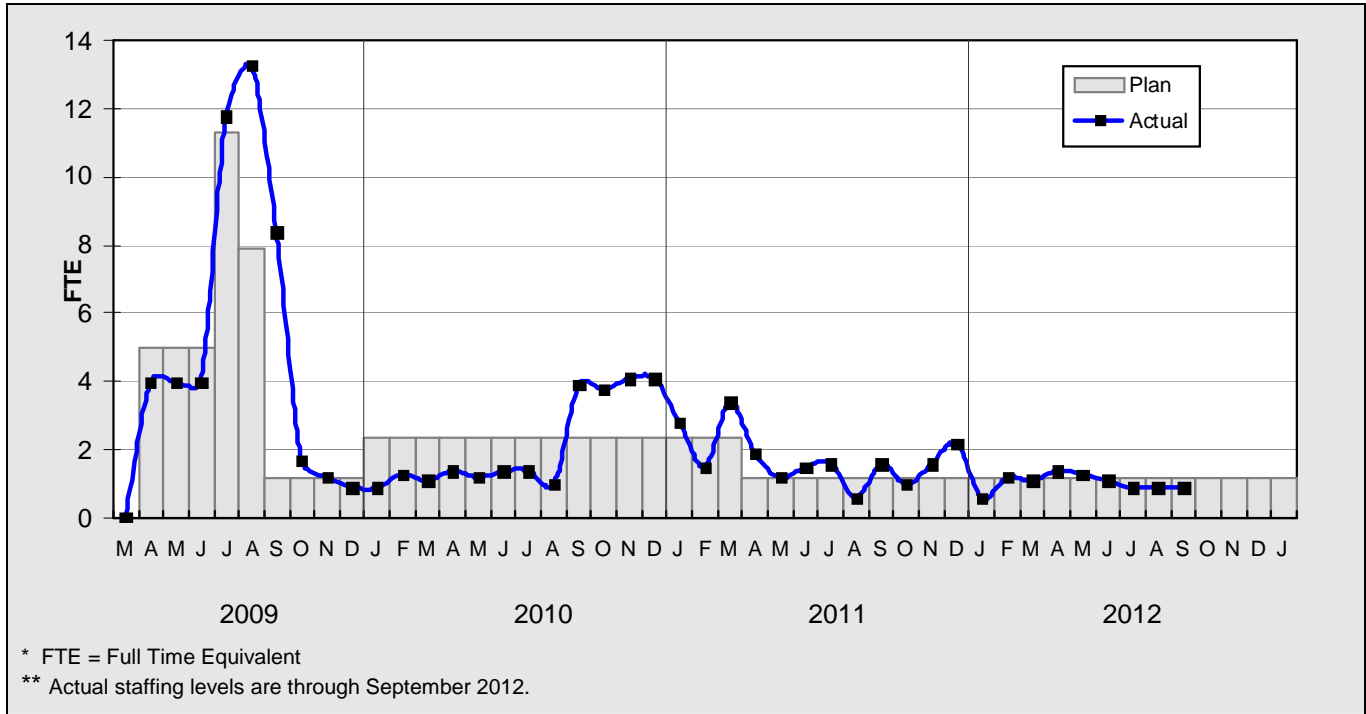


**CONSTRUCTION MANAGEMENT
SUPPORT SERVICES CONSULTANT - FTES**



STAFFING STATUS

ENGINEERING SERVICES CONSULTANT



REAL ESTATE STATUS

LEASES

- Jacobi has elected not to relocate the boundary wall and has requested Metro to construct the wall. No further action is required by the Real Estate Department on this item.
- The City of Los Angeles has requested that MTA dedicate a two-foot portion of MTA property along Marilla Street between Owensmouth Avenue and Topanga Canyon Blvd. Real Estate is processing the street easement.

	Total Leases	Total Leases to be Terminated	Total Leases to Remain with Modified Lease	Leases to Remain Under Existing Lease	Relocations Completed	Total Signboards Removed
Leases	82	78	3	1	52	26

QUALITY ASSURANCE STATUS

- Attended weekly job and readiness review meetings with Brutoco.
- Monitored the construction work along the alignment.

ENVIRONMENTAL STATUS

- There have been problems with the drainage from the bioswales. Brutoco was notified to adjust sprinklers and check on percolation at the problem areas.
- DTSC has requested that Metro commence with the preparation of a Closure Report for the Construction Phase of the Project.

COMMUNITY RELATIONS STATUS

- Participated in field meeting with Metro Environmental Department and residents of the Riviera Mobile Estates regarding vibration monitoring results.
- Coordinated field visits with Metro's Environmental Department and its vendor to discuss vibration and noise monitoring results.
- Coordinated field visit with the Salvation Army and Metro Real Estate Department to discuss damage to fence.
- Participated in Chinese Delegation presentation and tour of the Orange Line.

ART DEVELOPMENT STATUS

- Achieved 100% completion of porcelain enamel art panel installation at Canoga, Sherman Way, Roscoe, Nordoff and Chatsworth Stations.
- Achieved 100% completion of Orange Line Extension Art Guide.
- Installed 100% of artwork plaques at all stations.

SAFETY STATUS

CO943:


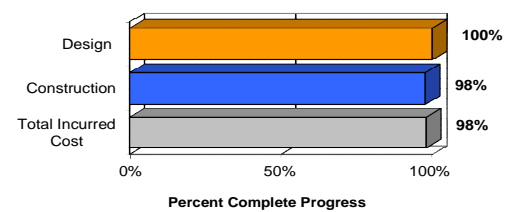
- Participated in weekly progress and Tool-box Safety Meeting and meeting with IPO and Contractor to discuss safety/security related issues, contractor schedules, traffic control and lane closures.
- Monitored punch list construction activities on a daily basis including weekends to ensure safety compliance with contract specifications.
- Brutoco and their subcontractors reported zero incidents and 22,884 work hours for the period July through September 2012. Total project to date work hours are 449,724 and six recordable incidents. The recordable incident rate is 2.2. The National Average is 3.8.

THIRD PARTY AGREEMENT STATUS

Third Party	Type of Agreement	Forecast Execution Date	Required Need Date	Status/ Comments
City of Los Angeles	Licensing Agreement	5/12	N/A	Executed agreement on May 14, 2012.
City of Los Angeles	O & M Agreement For Chatsworth Station	12/12	N/A	MTA and DOT continue to meet to resolve outstanding issues prior to execution of agreement.

Note: For a list of all Third Party Agreements, that have been executed, please see the May 2010 Monthly Project Status Report.

CONTRACT C0943 STATUS

<p>Design Builder Contractor: Brutoco, Engineering and Construction, Inc.</p>	<p>Contract No.: C0943 Status as of: Sept. 28, 2012</p>																																									
<p>Progress/Work Completed: - See Project Overview page 1.</p>	<p>Areas of Concern: - See Management Issues page 2.</p>																																									
<p>Schedule Assessment: The forecast dates for Contract Milestones shown in the table below are based on the current September 12 Schedule Update. MTA will reject this Update and continue to work with the design builder to complete outstanding punchlist work.</p>	<p>Cost Assessment: The current construction contract cost forecast is \$87.29 million and is within the Board authorized budget. The Design Builder submitted their 31th payment application in the approved amount of \$83.4 thousand. Increase in costs to the construction contract award value are a result of design enhancements and change orders.</p>																																									
<p>Schedule Summary:</p> <table border="0"> <tr><td>1. Date of Award:</td><td>02/10/10</td></tr> <tr><td>2. Notice to Proceed:</td><td>03/01/10</td></tr> <tr><td>3. Original Substantial Completion Duration:</td><td>730</td></tr> <tr><td>4. Current Substantial Completion Duration:</td><td>837</td></tr> <tr><td>5. Elapsed Time from NTP:</td><td>942</td></tr> </table>	1. Date of Award:	02/10/10	2. Notice to Proceed:	03/01/10	3. Original Substantial Completion Duration:	730	4. Current Substantial Completion Duration:	837	5. Elapsed Time from NTP:	942	<p>Cost Summary: \$ In 000's</p> <table border="0"> <tr><td>1. Award Value:</td><td>82.49</td></tr> <tr><td>2. Executed Modifications:</td><td>4.39</td></tr> <tr><td>3. Approved Change Orders:</td><td>0.41</td></tr> <tr><td>4. Current Contract Value (1 + 2 + 3):</td><td>87.29</td></tr> <tr><td>5. Incurred Cost:</td><td>85.48</td></tr> </table>		1. Award Value:	82.49	2. Executed Modifications:	4.39	3. Approved Change Orders:	0.41	4. Current Contract Value (1 + 2 + 3):	87.29	5. Incurred Cost:	85.48																				
1. Date of Award:	02/10/10																																									
2. Notice to Proceed:	03/01/10																																									
3. Original Substantial Completion Duration:	730																																									
4. Current Substantial Completion Duration:	837																																									
5. Elapsed Time from NTP:	942																																									
1. Award Value:	82.49																																									
2. Executed Modifications:	4.39																																									
3. Approved Change Orders:	0.41																																									
4. Current Contract Value (1 + 2 + 3):	87.29																																									
5. Incurred Cost:	85.48																																									
<table border="1"> <thead> <tr> <th>Contract Milestones</th> <th>Original Contract</th> <th>Current Contract</th> <th>Forecast (see note above)</th> <th>Calendar Day Variance</th> </tr> </thead> <tbody> <tr><td>Milestone 1 - Contract Substantial Completion</td><td>02/29/12</td><td>06/01/12</td><td>10/16/12</td><td>-137</td></tr> <tr><td>Milestone 2 - Complete Universal Fare System Requirements</td><td>11/01/11</td><td>04/01/12</td><td>4/24/2012 A</td><td>-16</td></tr> <tr><td>Milestone 3 - Elect/Communication Requirements Complete</td><td>01/30/12</td><td>05/21/12</td><td>6/30/2012 A</td><td>-49</td></tr> <tr><td>Milestone 4 - Passenger Information System Testing Complete</td><td>02/29/12</td><td>05/21/12</td><td>6/30/2012 A</td><td>-40</td></tr> <tr><td>Milestone 5 - System Assurance Complete</td><td>02/28/13</td><td>04/15/13</td><td>07/01/13</td><td>-77</td></tr> <tr><td>Milestone 6 - Landscape and Planting Maintenance and Warranty</td><td>02/28/14</td><td>04/15/14</td><td>09/25/14</td><td>-163</td></tr> <tr><td>Option C - Undergrounding of DWP Power line at Lassen Street</td><td>05/30/10</td><td>05/30/10</td><td>12/6/2010 A</td><td>-190</td></tr> </tbody> </table>	Contract Milestones	Original Contract	Current Contract	Forecast (see note above)	Calendar Day Variance	Milestone 1 - Contract Substantial Completion	02/29/12	06/01/12	10/16/12	-137	Milestone 2 - Complete Universal Fare System Requirements	11/01/11	04/01/12	4/24/2012 A	-16	Milestone 3 - Elect/Communication Requirements Complete	01/30/12	05/21/12	6/30/2012 A	-49	Milestone 4 - Passenger Information System Testing Complete	02/29/12	05/21/12	6/30/2012 A	-40	Milestone 5 - System Assurance Complete	02/28/13	04/15/13	07/01/13	-77	Milestone 6 - Landscape and Planting Maintenance and Warranty	02/28/14	04/15/14	09/25/14	-163	Option C - Undergrounding of DWP Power line at Lassen Street	05/30/10	05/30/10	12/6/2010 A	-190	<p style="text-align: center;">PERCENT COMPLETE <i>from March 1, 2010 to September 28, 2012</i></p>  <p style="text-align: center;">Percent Complete Progress</p> <p style="text-align: center;"><i>Construction physical percent complete excludes mobilization and general requirements</i></p>	
Contract Milestones	Original Contract	Current Contract	Forecast (see note above)	Calendar Day Variance																																						
Milestone 1 - Contract Substantial Completion	02/29/12	06/01/12	10/16/12	-137																																						
Milestone 2 - Complete Universal Fare System Requirements	11/01/11	04/01/12	4/24/2012 A	-16																																						
Milestone 3 - Elect/Communication Requirements Complete	01/30/12	05/21/12	6/30/2012 A	-49																																						
Milestone 4 - Passenger Information System Testing Complete	02/29/12	05/21/12	6/30/2012 A	-40																																						
Milestone 5 - System Assurance Complete	02/28/13	04/15/13	07/01/13	-77																																						
Milestone 6 - Landscape and Planting Maintenance and Warranty	02/28/14	04/15/14	09/25/14	-163																																						
Option C - Undergrounding of DWP Power line at Lassen Street	05/30/10	05/30/10	12/6/2010 A	-190																																						

CONSTRUCTION PHOTOGRAPHS



VIP event on June 29, 2012 – Ribbon cutting ceremony at Sherman Way Station.



VIP event on June 29, 2012 – Bus banner cutting over Lassen Bridge entering Chatsworth Station.

CONSTRUCTION PHOTOGRAPHS



Revenue Service commences on June 30, 2012 – Chatsworth Station.



Revenue Service commences on June 30, 2012 – Chatsworth Station.

CONSTRUCTION PHOTOGRAPHS



Revenue Service commences on June 30, 2012 – Canoga Station.



Revenue Service commences on June 30, 2012 - Canoga Station.