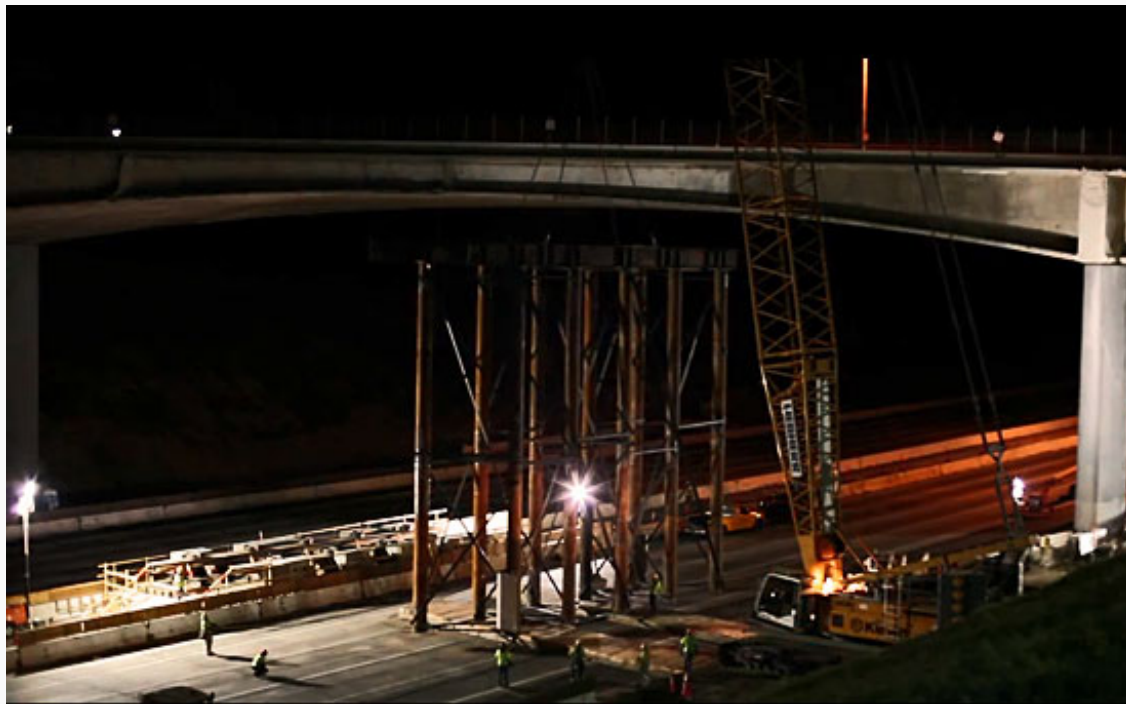


More overnight freeway closures

 zevyaroslavsky.org/405-report/more-overnight-freeway-closures

[Home](#) > [The 405 Report](#) > More overnight freeway closures

March 8, 2012



A 120,000-pound temporary support structure moves into place under the Mulholland Bridge.

Workers building temporary supports under the Mulholland Bridge will be closing the 405 Freeway for additional nights.

All lanes of the southbound freeway will be closing tonight, March 8, and again on March 12 and 13, from the 101 Freeway to Getty Center Drive. Then all northbound lanes from Getty Center Drive to the 101 will be closing on March 14 and 15.

Each night, ramps will begin closing at 7 p.m. and freeway lanes at 10 p.m. The full closure in each direction will run from midnight to 5 a.m. Details are [here](#).

A Metro video of a temporary supporting column being placed under the bridge, including a fast-paced time lapse sequence, can be viewed [here](#).

Posted 3/8/12

Read More Stories: [The 405 Report](#)