

Night bridge work closes freeway

 zevyaroslavsky.org/405-report/night-bridge-work-closes-freeway

[Home](#) > [The 405 Report](#) > Night bridge work closes freeway

June 20, 2013



The Mulholland Bridge, above, and Skirball Bridge will close on upcoming nights, along with the northbound 405.

Work this week on two overpasses across the 405 Freeway is prompting night closures of both bridges and the freeway.

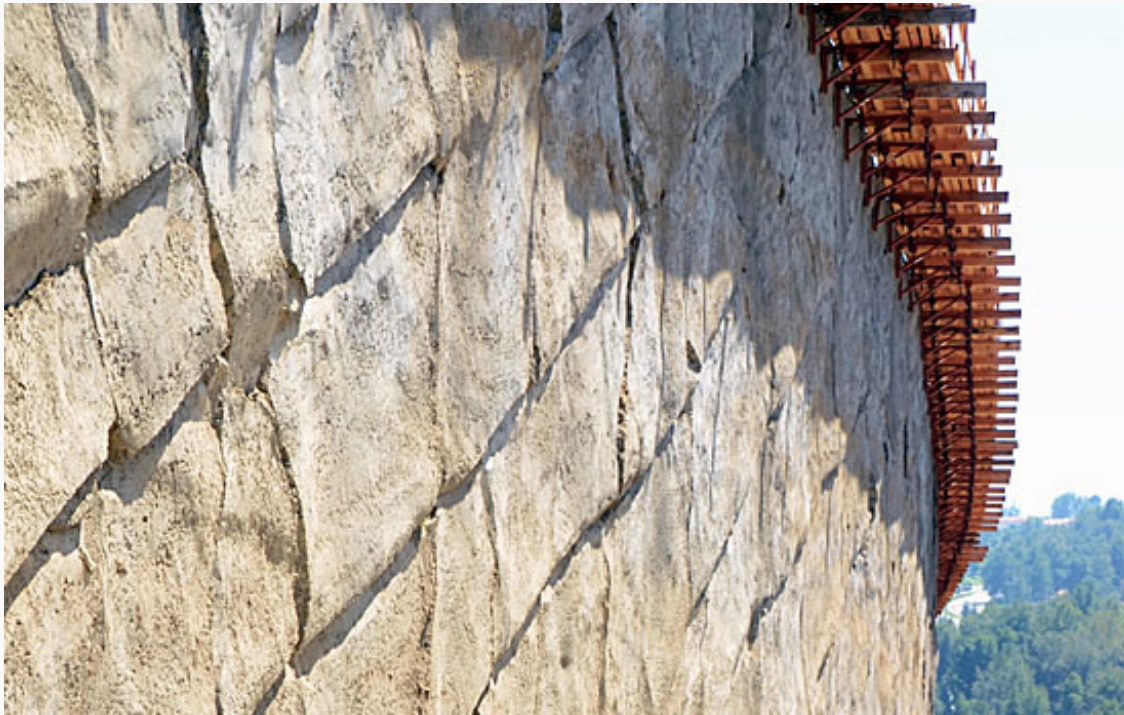
The Skirball Bridge is being closed nightly from 10 p.m. through 6 a.m. so that girders can be installed to form the bridge's deck. That work continues tonight and Friday night, and is set to conclude by Saturday morning. Because of the size of the girders—the largest weighs 128,000 pounds—the northbound freeway running from Getty Center Drive to the 101 Freeway will be closed as well so that motorists aren't endangered. Ramps in the area start closing tonight and Friday as early as 7 p.m., with lane closures beginning at 10 p.m. The entire northbound stretch will be closed from midnight each night, reopening at 5 a.m. the following day.

Also closing each night is the Mulholland Bridge, where advance work is taking place in preparation for pouring concrete to form the bridge's deck. The bridge will be closed just before midnight tonight and Friday, reopening by 6 a.m. the next day. Details of the closures are [here](#).

A [community meeting](#) is scheduled for tonight, Thursday, June 20, to look ahead at two long-running ramp closures being planned for the project. Plans currently call for the northbound Sunset Boulevard off-ramp from the 405 to close for 120 days starting August 3, and for the eastbound Wilshire onramp to the 405 to close for 90 days later in the month.

The meeting, running from 6 p.m. to 8 p.m., will be held in Room C of the Westwood Recreation Center, 1350 S. Sepulveda Boulevard.

The [project](#), to construct a 10-mile northbound carpool lane on the 405 Freeway along with other improvements, has required the demolition and rebuilding of three bridges spanning the freeway. The [Sunset Bridge](#) already has reopened. The rebuilt [Skirball](#) and [Mulholland](#) bridges are slated to reopen by year's end.



A retaining wall rises along the future Skirball off-ramp. Photo/Metro

Posted 6/21/13

Read More Stories: [The 405 Report](#)