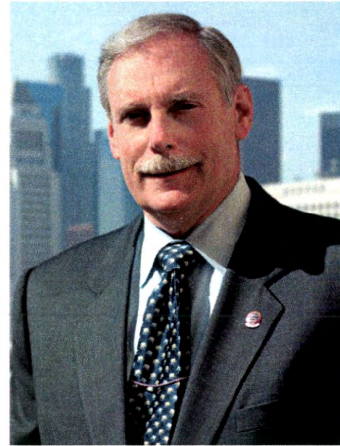




Metro CEO Roger Snoble

Los Angeles County Metropolitan Transportation Authority



Roger Snoble

Los Angeles County Metropolitan Transportation Agency Chief Executive Officer Roger Snoble led one of the nation's largest public transportation agencies from Oct. 1, 2001, through April 6, 2009. Under his leadership, the agency garnered top national awards for excellence and accomplished the construction of major transportation projects, including the Metro Orange Line, the Eastside Extension of the Metro Gold Line, the Exposition Light Rail Line and secured the passage of Measure R.



February 20, 2009: The Los Angeles County Metropolitan Transportation Authority Headquarters.
Photo by Gary Leonard.

Metro CEO Roger Snoble

Los Angeles County Metropolitan Transportation Authority (Metro) CEO Roger Snoble announced Dec. 17, 2009, he would retire once his successor is on board. Mr. Snoble, 63, has headed Metro for seven years and, under his leadership, the agency garnered top national awards for excellence. He also played a key role in securing last fall's passage of Measure R, a new half cent sales tax that will fund a comprehensive package of new rail and bus and street and highway improvements in the county over the next 30 years.

On his watch the Orange Line, Eastside Gold Line and Exposition light rail line have been or are being built. With the passage of Measure R on Nov. 4, 2008, Metro is poised to build the integrated public transit network that this region so desperately needs.

Since Oct. 1, 2001, CEO Snoble has led one of the nation's largest public transportation agencies that is responsible not only for bus and rail operations that transport more than 1.5 million boarding passengers on an average weekday but also construction of new transportation projects such as the six-mile extension of the Metro Gold Line to East Los Angeles that is nearing completion. Metro also is Los Angeles County's lead transportation planning agency and programs local, state and federal funds for transportation for the 88 cities, county, Caltrans and transit operators.

The Metro Gold Line Eastside Extension, which will open in the summer of 2009, is a project that is ahead of schedule, within budget and has maintained the best construction safety record of any public works project in modern history – nearly 4 million construction work hours without a lost time injury.

Career in public transit spans 45 years

This project's record is just one of the reasons that Metro earned the 2006 Outstanding Public Transportation System award for large transit properties given annually by the American Public Transportation Association (APTA).

CEO Snoble guided the Eastside light rail project from inception. He also oversaw development of the highly successful Metro Orange Line busway in the San Fernando Valley and expansion of the Metro Rapid system that now has 28 lines crisscrossing the county. Since Mr. Snoble joined Metro Oct. 1, 2001, the agency also has taken a lead role in expanding its green power initiatives. Today Metro operates more than 2,500 buses powered by compressed natural gas. Its El Monte transit facility earned a gold LEED (Leadership in Energy and Environmental Design) rating for sustainability, and installation of solar panels on the roofs of Metro bus divisions annually saves Metro hundreds of thousands of dollars in energy costs.

Moreover, extensive surveys show customer satisfaction for Metro continues to improve. One sign of that is the fact that Metro ridership remains high despite plunging gas prices.

Snoble's career in public transportation spans four decades. Besides heading Metro, he also was the chief executive at Dallas Area Rapid Transit (DART) for seven years (1994-2001), and he served as president and general manager of the San Diego Transit Corporation where he worked for 20 years before DART. Snoble started his career in 1965 as a planner for the TriCounty Regional Planning Commission in Akron, Ohio. He also worked for Akron Metro Transit. Snoble has earned numerous awards for his leadership. APTA named him Transit Manager of the Year in 1998. Under Snoble's leadership, DART was cited by APTA as the Transit Agency of the Year in 1997.



2001

Customer Service, Quality, Employee Development Among CEO Snoble's Top Priorities at First All-hands Meeting

(Oct. 2, 2001) "We'll have a fun ride together," the MTA's new chief executive officer, Roger Snoble, assured employees attending his first all-staff meeting.

For more than an hour, Monday, Snoble gave a standing-room-only audience – and others listening in from overflow rooms – insights into the broad themes he considers important at the outset of his administration. He was hired by the Board in June for a four-year term of office.



Veteran journalist Kitty Felde interviews CEO Roger Snoble on KPCC talk show.
PHOTO BY ED SCANNELL

Snoble Discusses Transit Topics on KPCC's 'Talk of the City'

By ED SCANNELL
(Dec. 6, 2001) In his longest broadcast interview to date, CEO Roger Snoble took to the airwaves, Tuesday, discussing a broad range of MTA-related topics, including the new transit service sector concept.

MTA Chairman, CEO Respond to Viewers on Live Cable TV Show

By GARY WOSK
Nearly 30 questions were fired in rapid succession at MTA Board Chairman John Fasana and CEO Roger Snoble, Sunday evening, during a live TV show entitled "L.A. Traffic Jam - Is There a Way Out?"

But, during the hour-long presentation, the two were quick to respond to queries about a wide range of the MTA's responsibilities in curbing traffic congestion, as well as planning, funding and operating mass transit and other transportation programs. Sept. 30, 2001

Candor was the underlying theme of the show, which aired on cable channels throughout Los Angeles County.



Television show host Lee Kanon Alpert, right, fields questions on traffic congestion to CEO Roger Snoble and MTA Board Chairman John Fasana during live broadcast of Parallax Forum on Time Warner Cable Network. PHOTO: JOSÉ UBALDO



Next Stop, Stardom! 'Hollywood & Highland' Debuts at 'Official' Premiere



MTA CEO Roger Snoble speaks at dedication ceremonies for 'Hollywood & Highland.'

Nov. 8, 2001 -- Civic leaders and MTA officials rolled out the Metro Red Line as well as the red carpet for Hollywood & Highland, a \$615 million retail and entertainment complex that sits above the Metro Red Line subway station of the same name. The complex is credited with the much anticipated renaissance of Hollywood and is hailed as the crown jewel of MTA's joint development program, said MTA CEO Roger Snoble at dedication ceremonies on Thursday. MTA has leased 1.35 acres of prime time Hollywood land to developers TrizecHahn. The lease is expected to put nearly \$500,000 annually in transportation coffers.



Clockwise from above left, the Babylon photo op portal; the new home of the Oscars; Los Angeles County Supervisor and MTA Board Member Zev Yaroslavsky at dedication ceremonies, and a view of the Renaissance Hotel. PHOTOS BY ED SCANNELL



CEO Roger Snoble signs a five-year contract with DuPont Safety Resources to officially start the MTA's new employee safety campaign. From left, seated, are Joe Megginson, DuPont safety project manager; Jim Forsman, DuPont Safety Resources president; Snoble; and John Catoe, Deputy CEO. From left, standing, are Carmen Bianco, DuPont business development manager; Richard Brumbaugh, MTA chief financial officer; Deborah Spottsville, MTA contract administrator; Allan Lipsky, Deputy CEO; Gary Spivack, MTA safety project manager; and Paul Lennon, managing director, MTA System Safety and Security. PHOTO: BILL HEARD

MTA Introducing Multi-Year Top-to-Bottom Safety Campaign





Time out: Moments



Countywide monthly pass debuts August 13, 2002

2002

It's fair to say that the year 2002 – fast-paced, productive and precedent-setting as it was – will be recorded as one of the most significant in MTA history.

The agency set a new direction with the inauguration of five service sectors charged with bringing bus service closer to the people of the communities MTA serves. Launched in July, the new sectors quickly began making improvements in customer service.

MTA also kicked off an aggressive “Safety’s First” program that touches every employee from the frontline operators and mechanics to the executive office staff. Statistics already are showing a drop in on-the-job injuries and a reduction in the number of Workers’ Compensation claims.

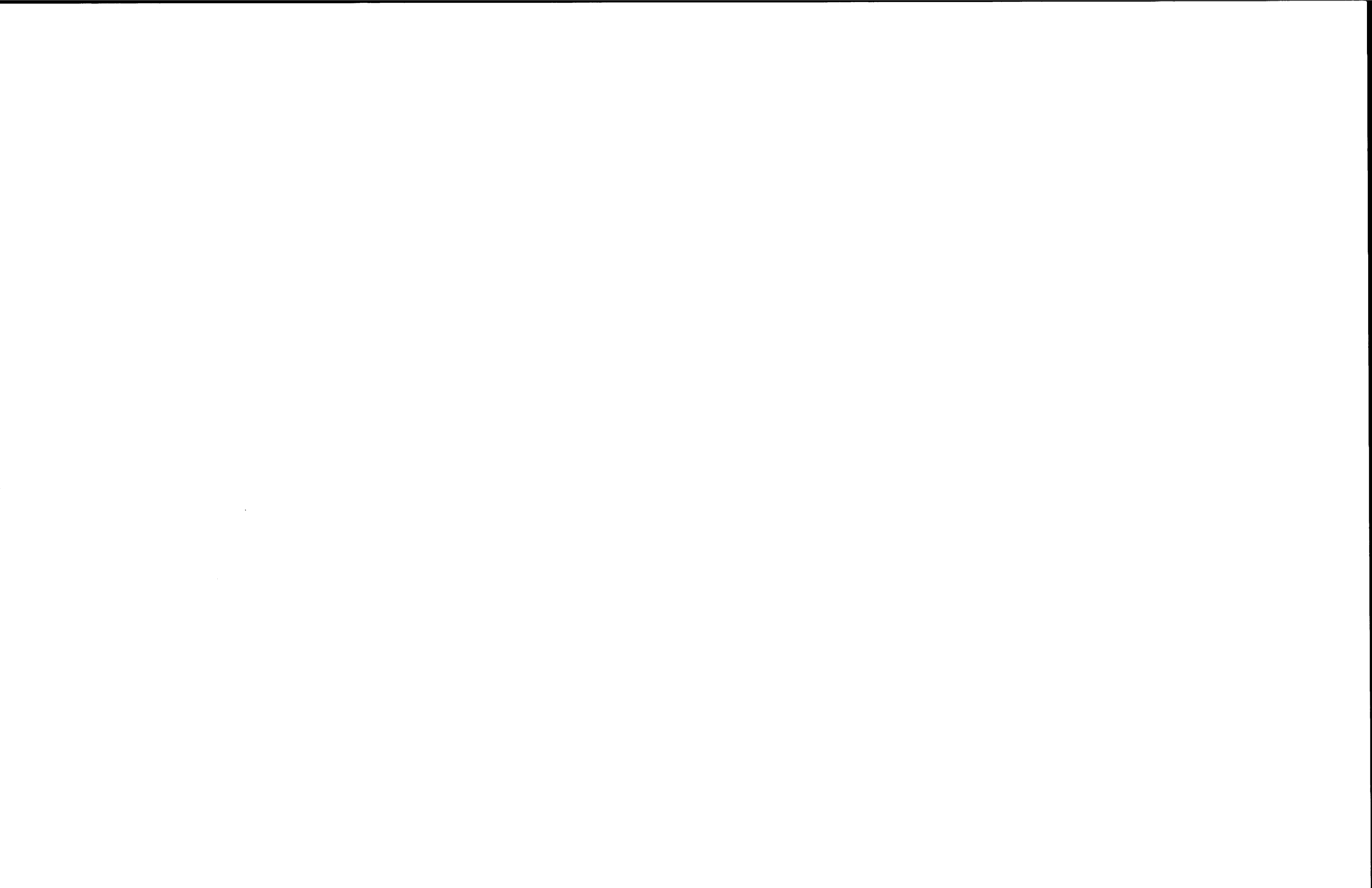
MTA played a key role in uniting local transit services to create a countywide monthly pass – EZ Transit Pass – and partnered with the LA Area Chamber of Commerce to host the county’s first-ever transportation summit. Mobility 21 participants called for Los Angeles County to get its fair share of state and federal funding.

The year also was made just a little sweeter when two Metro Rail operators – Tu Phan and Robert Rodriguez – won the 2002 International Rail Rodeo in Baltimore. It was MTA’s first victory in the prestigious competition.





Alameda Corridor Dedication April 12, 2002.







2003

The year 2003 began with great momentum as MTA moved forward in January with the beginning of construction of the San Fernando Valley Metro Rapidway – now the Metro Orange Line – and the purchase of new high-capacity buses.

It picked up steam through the spring with the introduction of new transit passes, the implementation of a countywide bus signal priority project and with the opening in July of the Metro Gold Line.

But, progress was brought to a screeching halt – a painful 35-day hiatus – when MTA’s 1,900 maintenance employees and 5,600 members of three other unions walked off the job. “Lifeline” bus service filled some of the gap for stranded customers, while employee volunteers staffed phone lines and cleaned buses and train cars.

With the end of the strike in mid-November, wheels started to turn again. The Mobility 21 transportation summit was a success; the “CompoBus” made its debut; and a key bridge on the Metro Orange Line was completed.

Despite the stop-and-go character of 2003, it’s fair to say that MTA managed to make progress and can record some significant accomplishments.



June 2, 2003: Happy Birthday - take a cruise





Metro Gold Line opens July 27, 2003

2004

The year 2004 was one of the most eventful in recent memory for Metro, with exhilarating highs and surprising setbacks that required strong action on the part of employees and management.

In July, a gala groundbreaking got the Metro Gold Line's Eastside Extension off to a good start. The next month, however, a lawsuit halted work for 24 days on another key project – the Metro Orange Line.

In January, budget problems forced cancellation of the Call for Projects, affecting countywide projects valued at \$2.3 billion. In June, Metro provided outstanding shuttle service during the three days when former President Ronald Reagan lay in state at the Reagan Library.

In November, Congress voted \$62 million for Metro Rail and Metro Bus projects. In December, the downturn in passenger revenues and other costs forced Metro to take actions – including instituting a hiring freeze and canceling capital projects – to offset a \$40 million budget deficit.

Metro played host to a number of successful events – Mobility 21, Rail-Volution and the California Transit Association convention – and also honored employees at the “Night of Stars,” as well as at the annual Raildeo and Bus Roadeo.









Photo by
John Weiskopf



2005

The year 2005 was one of the most astounding in recent memory.

It was a year in which Mother Nature played havoc with Metro construction projects and with the rail and bus systems. But, it also was a year that saw the agency shine with the opening of the Metro Orange Line and significant progress on the Eastside Extension and the Exposition Line.

Metro received new buses and new rail cars, along with a favorable report from the Special Master overseeing the Consent Decree and assurances from a panel of experts that tunneling farther along Wilshire could be done safely.

The agency responded to heightened concern over security, following the terror attacks in London, with the installation of new high-tech surveillance equipment. The agency also launched two new Metro Express lines – 450X and 577X – and a welter of new Metro Rapid lines.

As CEO Roger Snoble noted in his December column, it was “a year of beginnings.”



June 11, 2005: Train on a plane

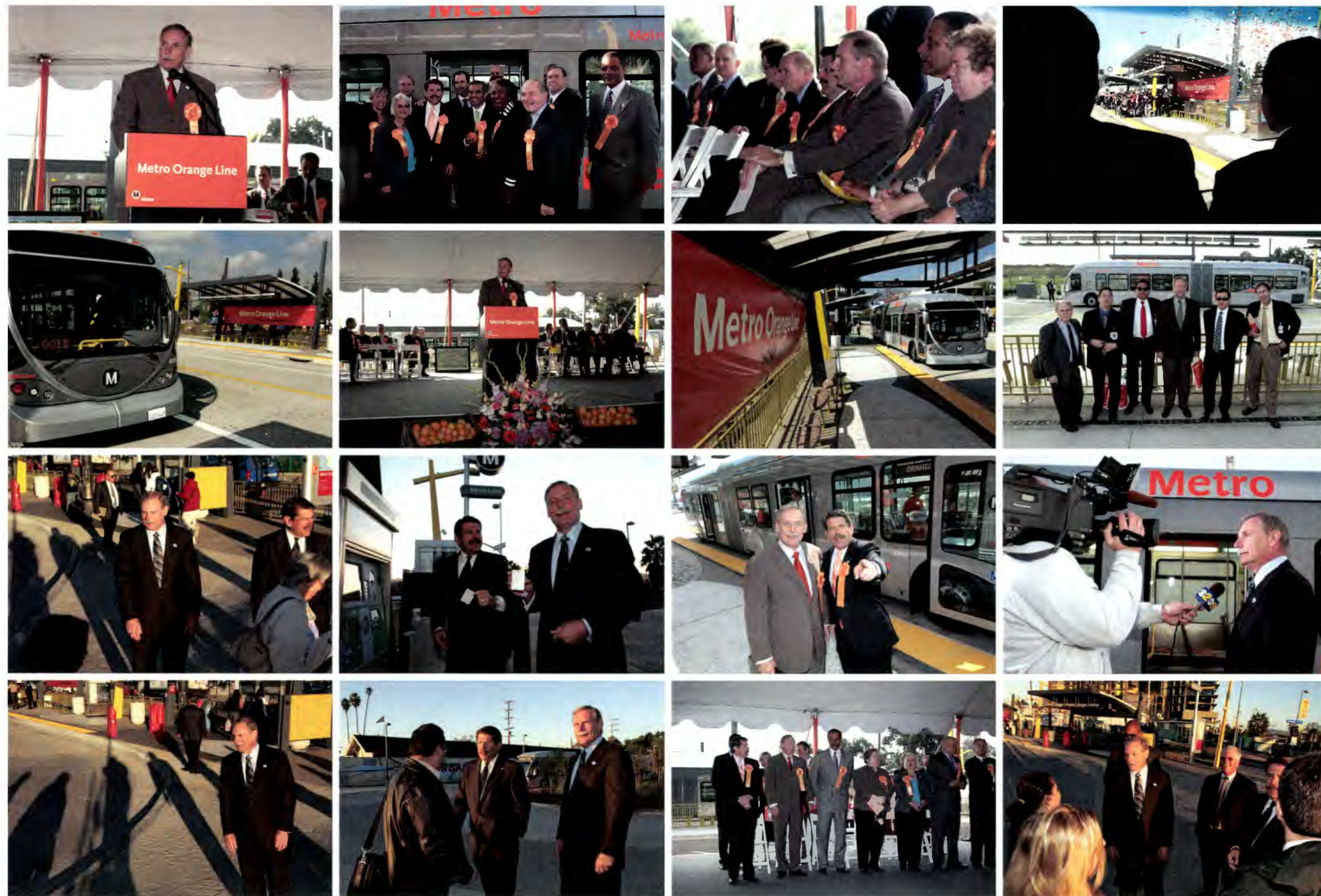




December 2005: Metro Gold Line holds Court as official Tournament of Roses train.



October 3, 2005 - Big Rig Tow



Metro Orange Line opens Oct. 27, 2005





Tunneling begins Dec. 15, 2005.



Tunnel boring machines lowered at Mariachi Plaza, Dec. 15, 2005



2006 - The Year of Industry's Highest Honor

Metro kept up a blistering pace of activity and achievement in 2006. The agency made big news on a number of fronts – increased ridership, labor relations and system expansion among them – and capped off the year by being named America's best transit agency.

The year began with a difficult, but ultimately successful Rose Parade/Rose Bowl rail and bus operation and ended with high-profile shuttle service for mourners attending former President Gerald Ford's memorial in Palm Desert.

As 2006 progressed, we saw the Expo Line begin to take shape with the selection of a CEO, approval of a construction budget and a groundbreaking. Across town, tunneling began and was completed on the Metro Gold Line's Eastside Extension, whose workers set an unprecedented safety record.

Meanwhile, bus and rail ridership saw steady increases as the public reacted to higher gasoline prices and Metro opened new service. The Metro Orange Line, in particular, achieved increased patronage from Valley riders.

Metro received the transit industry's highest honor at the APTA Annual Meeting in October when it was named Outstanding Public Transportation System for 2006.

Metro averted labor strife, thanks to a new negotiating strategy, when management and leaders of its three major unions reached agreements prior to contract expiration. The 10-year-old federal Consent Decree also came to an end, although the Bus Riders Union continued to file court appeals.

Saddening the year, however, was the death in April of Metro's venerable Arthur Winston, the 100-year-old patriarch of his namesake Division 5.









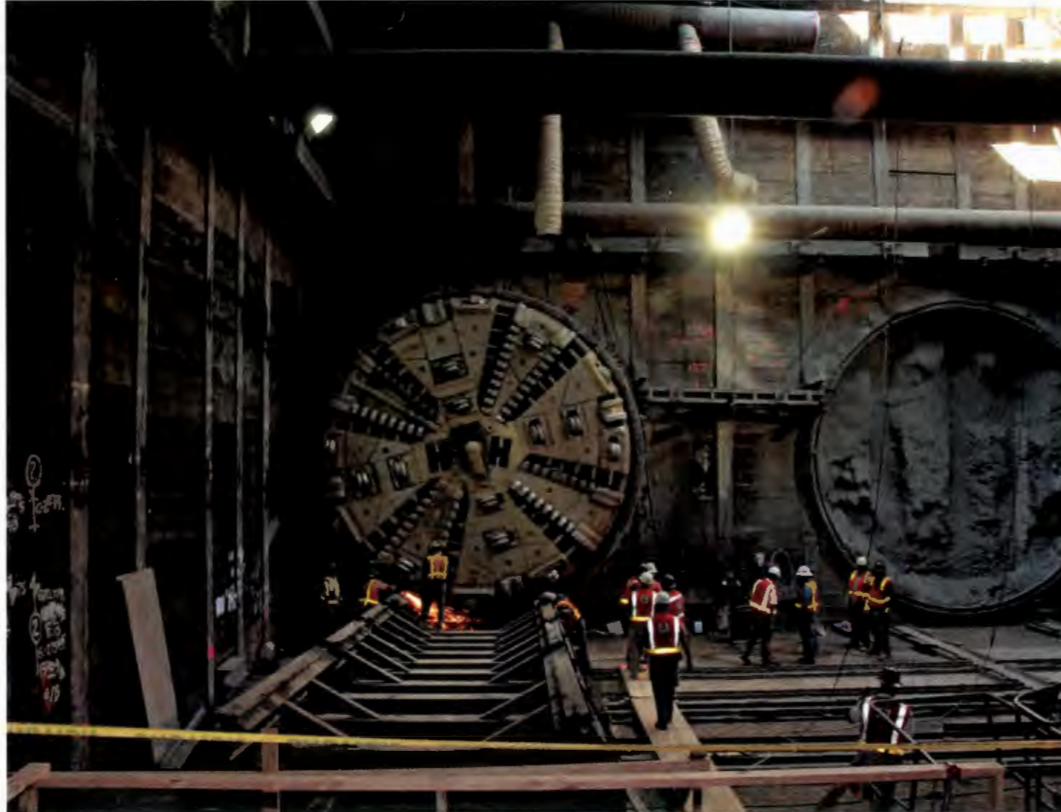
Sept. 28, 2006: Expo Line breaks ground



February 27, 2006: Compiling an unprecedented safety record



October 2006: Board Chair Gloria Molina awards five-year service pin.



Tunnel breakthrough Nov. 14, 2006







Mobility 21 was created in 2002 to bring together elected officials, transportation providers, businesses, local municipalities, labor and community leaders to develop solutions to the transportation issues facing Los Angeles County.



2007

Metro shined in all its glory in 2007, surpassing goals in ridership, moving forward on transit-oriented developments and turning 'green' into gold at the Metro San Gabriel Valley sector and division offices

A rainy day kept the guests of Metro San Gabriel Valley's eco-headquarters grand opening inside, but that didn't stop the cascade of certificates, awards, congratulations, media and official praise that accompanied the ribbon and cake cutting festivities Jan. 25. The \$13-million, three-story, 45,500-square-foot building surpasses the state's standards for energy use and water consumption and consumes 33 percent less electricity than a conventional structure

Metro joined with the KOAR Development Group, March 10, to celebrate a major construction milestone for the Solair joint development at the Wilshire/Western Metro Purple Line Station. The 22-story glass-wrapped tower will offer 186 cosmopolitan residences and penthouses, accompanied by a resort-style pool deck and many resident amenities.

Korean fan dancers in colorful traditional costumes set the tone in October at a ribbon-cutting ceremony marking the formal opening of L.A.'s latest transit-oriented development – Wilshire Vermont Station. The \$136 million, mixed-use development includes 449 apartments and more than 36,000 square feet of retail space built above the Vermont Metro Rail station.



Metro San Gabriel Valley building earns LEED Gold certification





aFebruary 20, 2008: U.S. Senator Barbara Boxer, U.S. Representative Lucille Roybal-Allerd and Metro officials inspect the construction site of Eastside Extension.

2008

Both triumph and tragedy marked 2008 as Metro made news on several fronts during the year.

Triumph as Measure "R" was passed by the electorate on November 4 authorizing a one-half cent sales tax to fund a myriad of much-needed transportation projects throughout the county, but tragedy in September, when a Metrolink train accident claimed the life of employee Donna Remata, a storekeeper at Metro Headquarters.

Remata was among the 25 passengers and train crew members killed when Metrolink's Ventura County Line 111 train collided with an oncoming Union Pacific freight train near Chatsworth on Sept. 12.

The event spurred an unprecedented remedial safety effort throughout the system.

Ridership soared on virtually all of Metro's rail lines and the Metro Orange Line reached record levels and construction was completed and continued on several major improvement projects including the Metro Gold Line's Eastside Extension and the Expo Light Rail Line.





Roger Awards April 28, 2008 honors stars of Long-Range Strategic Plan video



May 22, 2008: Construction of Eastside Extension achieves unprecedented safety record, now more than 3.8 million work-hours without an accident that requires a single day away from work.





June 12, 2008: Measure R report for League of California Cities members



Nov, 5, 2008 - News conference at Wilshire/Western Station to claim victory at the polls for Measure R





Metro Buses -- The largest Clean-Air Fleet in the Nation

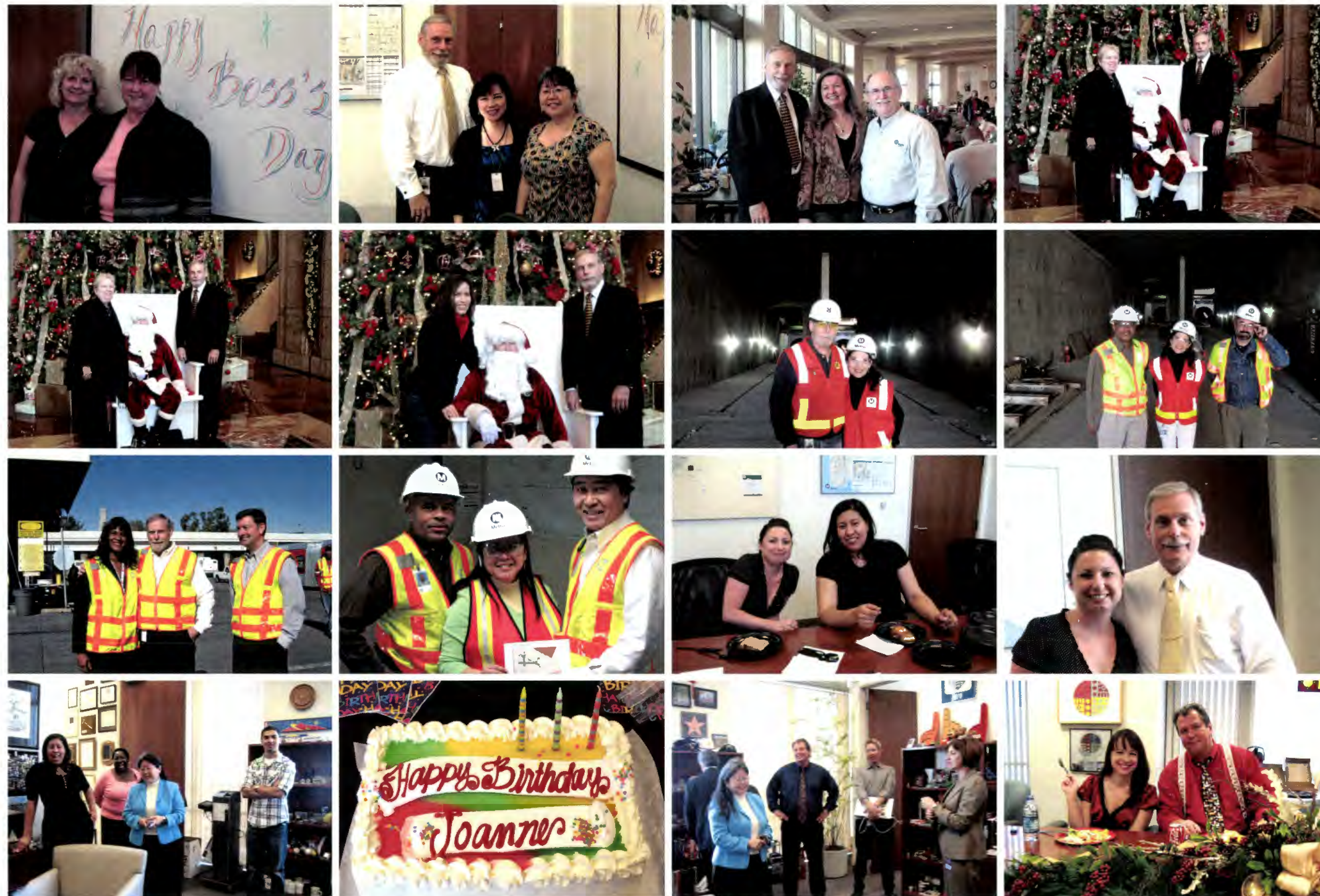


Transportation Icon Ralph Kramer schmoozes with the boss at annual "Night of Stars" event in Hollywood



OCTA Chief Art Leahy pays friendly tribute to Metro's status among transportation systems. The chairman of the House Transportation Appropriations Subcommittee, Michigan Congressman Joe Knollenberg, and wife Sanie, visit Metro.





More on the Metro family: Friends as seen through the lens of Diana Estrada

Moments







A portrait of the Office of Management and Budget:, from the gang that solved the structural deficit



January 2009: New board members Los Angeles County Supervisor Mark Ridley-Thomas, and Lakewood Councilwoman Diane Dubois join the Board as Yvonne Burke retires and Bonnie Lowenthal departs.



March 26, 2009: Last Bard meeting is first for two new Board members: Los Angeles City Councilman Jose Huizar and LADOT General Manager Rita Robinson. But, first, the official photo op with the Chief's special cake.







March 26, 2009: Employee reception gives the departing CEO the red carpet treatment.









From Metro, with Love.







Metro CEO Roger Snoble