

THE PREPARATION OF THIS DRAWING HAS BEEN FINANCED IN PART THROUGH A GRANT FROM THE U.S. DEPARTMENT OF TRANSPORTATION, FEDERAL TRANSIT ADMINISTRATION (FTA), UNDER THE FEDERAL TRANSIT ACT OF 1964, AS AMENDED, AND IN PART BY THE TAXES OF THE CITIZENS OF LOS ANGELES COUNTY AND OF THE STATE OF CALIFORNIA.

REV	DATE	BY	APP	REG NO	EXPIRES	SEAL HOLDER	DESCRIPTION

DESIGNED BY	
DRAWN BY	
CHECKED BY	
IN CHARGE	
DATE	

M Metro LOS ANGELES COUNTY METROPOLITAN TRANSPORTATION AUTHORITY
Crenshaw Transit Corridor Project

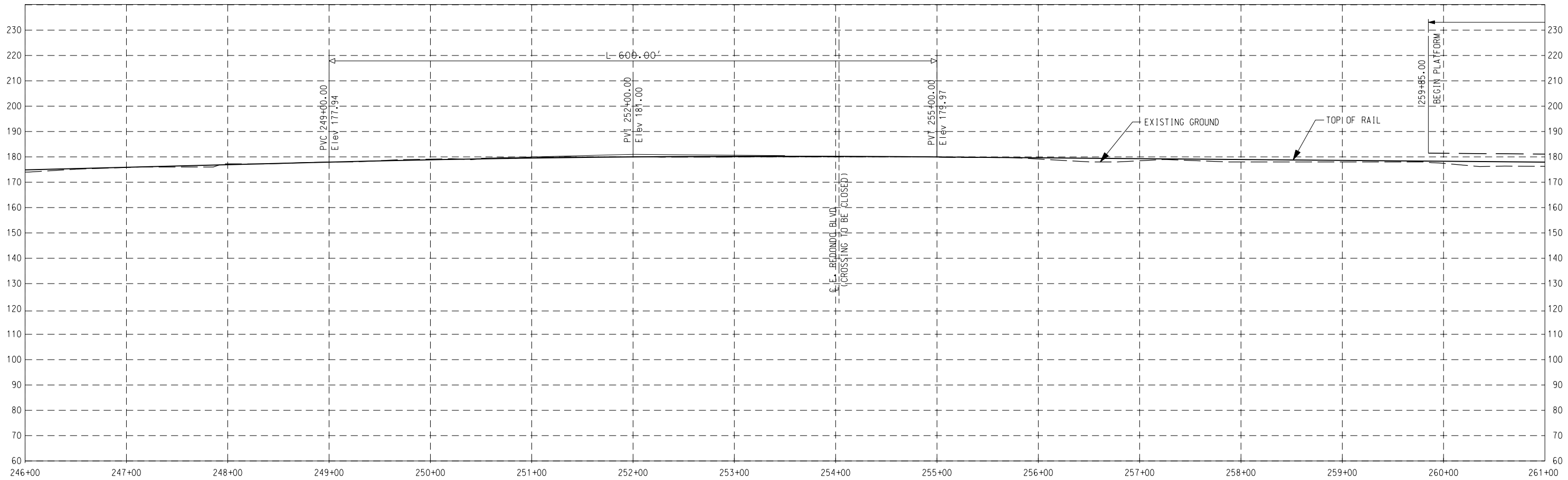
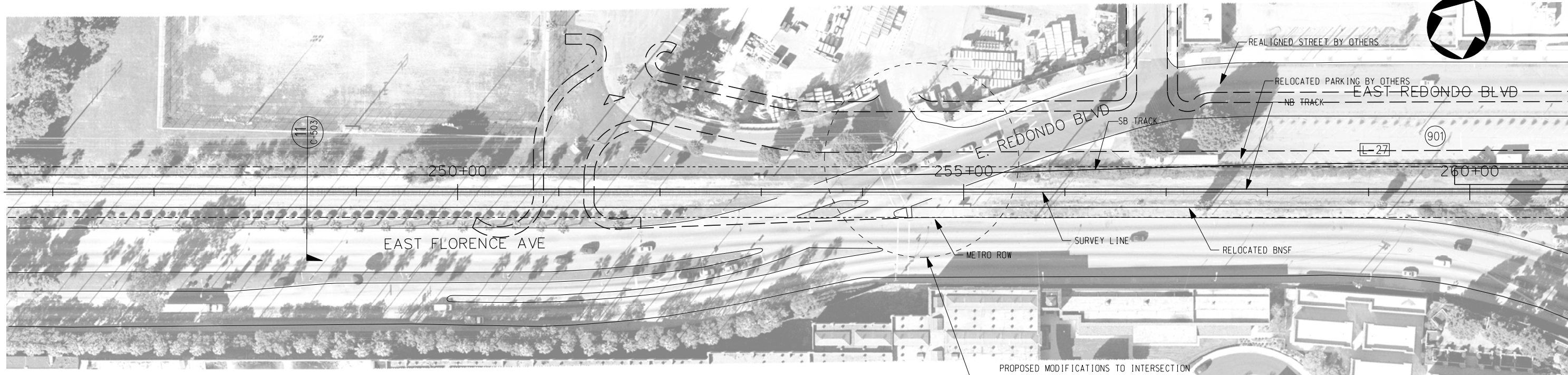
PB Parsons Brinckerhoff
In Association with Jenkins Gales Martinez, Inc.

PROJECT MANAGER

LIGHT RAIL TRANSIT

PLAN & PROFILE
STA 232+00 TO STA 246+00

CONTRACT NO	PS-4330-1968
DRAWING NO	C-418
SCALE	HORIZ: 1" = 100' VERT: 1" = 40'
SHEET NO	



THE PREPARATION OF THIS DRAWING HAS BEEN FINANCED IN PART THROUGH A GRANT FROM THE U.S. DEPARTMENT OF TRANSPORTATION, FEDERAL TRANSIT ADMINISTRATION (FTA), UNDER THE FEDERAL TRANSIT ACT OF 1964, AS AMENDED, AND IN PART BY THE TAXES OF THE CITIZENS OF LOS ANGELES COUNTY AND OF THE STATE OF CALIFORNIA.

REV	DATE	BY	APP	REG NO	EXPIRES	SEAL HOLDER	DESCRIPTION

DESIGNED BY	
DRAWN BY	
CHECKED BY	
IN CHARGE	
DATE	

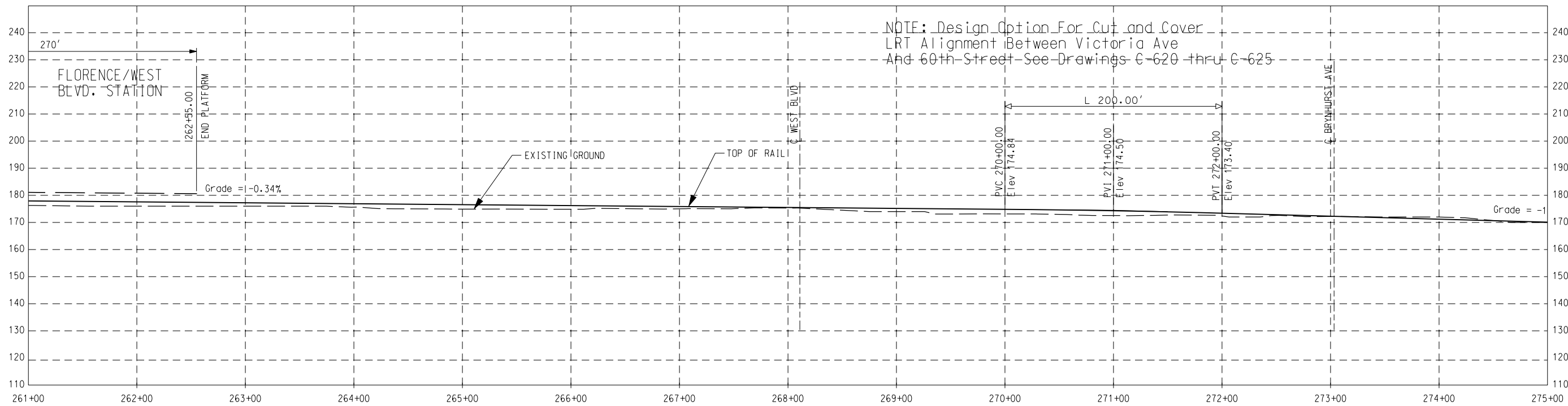
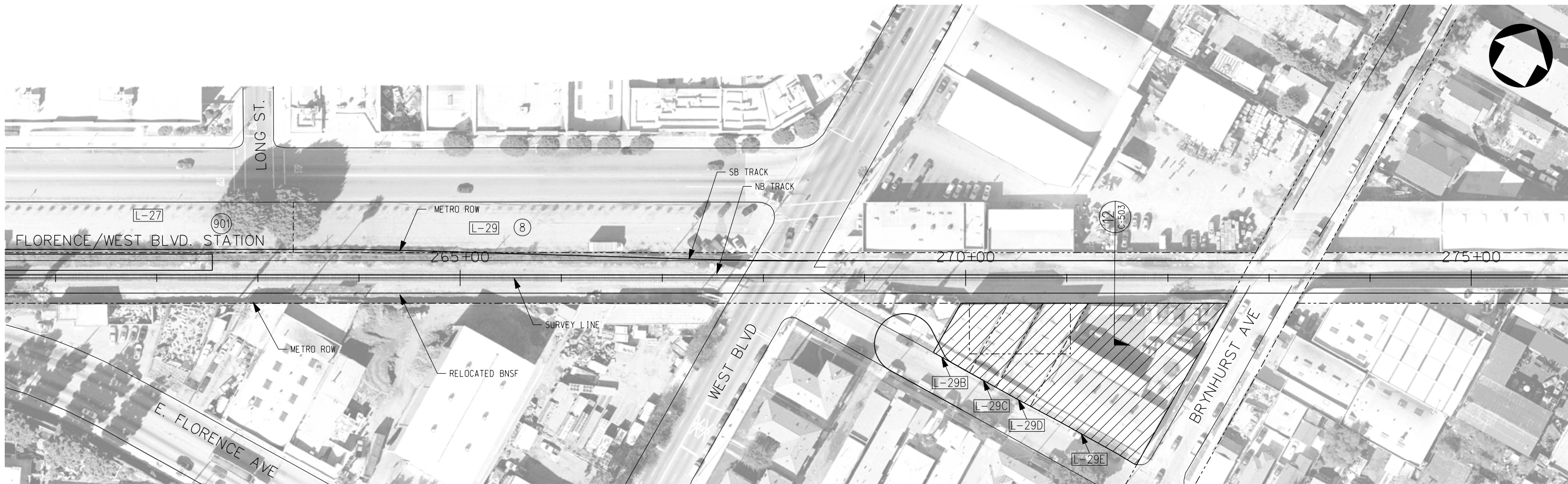
M Metro LOS ANGELES COUNTY METROPOLITAN TRANSPORTATION AUTHORITY
Crenshaw Transit Corridor Project

PB Parsons Brinckerhoff
In Association with Jenkins Gales Martinez, Inc.

PROJECT MANAGER

LIGHT RAIL TRANSIT
PLAN & PROFILE
STA 246+00 TO STA 261+00

CONTRACT NO	PS-4330-1968
DRAWING NO	C-419
SCALE	HORIZ: 1" = 100' VERT: 1" = 40'
SHEET NO	0



THE PREPARATION OF THIS DRAWING HAS BEEN FINANCED IN PART THROUGH A GRANT FROM THE U.S. DEPARTMENT OF TRANSPORTATION, FEDERAL TRANSIT ADMINISTRATION (FTA), UNDER THE FEDERAL TRANSIT ACT OF 1964, AS AMENDED, AND IN PART BY THE TAXES OF THE CITIZENS OF LOS ANGELES COUNTY AND OF THE STATE OF CALIFORNIA.

REV	DATE	BY	APP	REG NO	EXPIRES	SEAL HOLDER	DESCRIPTION

DESIGNED BY	
DRAWN BY	
CHECKED BY	
IN CHARGE	
DATE	

M Metro
LOS ANGELES COUNTY METROPOLITAN TRANSPORTATION AUTHORITY
 Crenshaw Transit Corridor Project

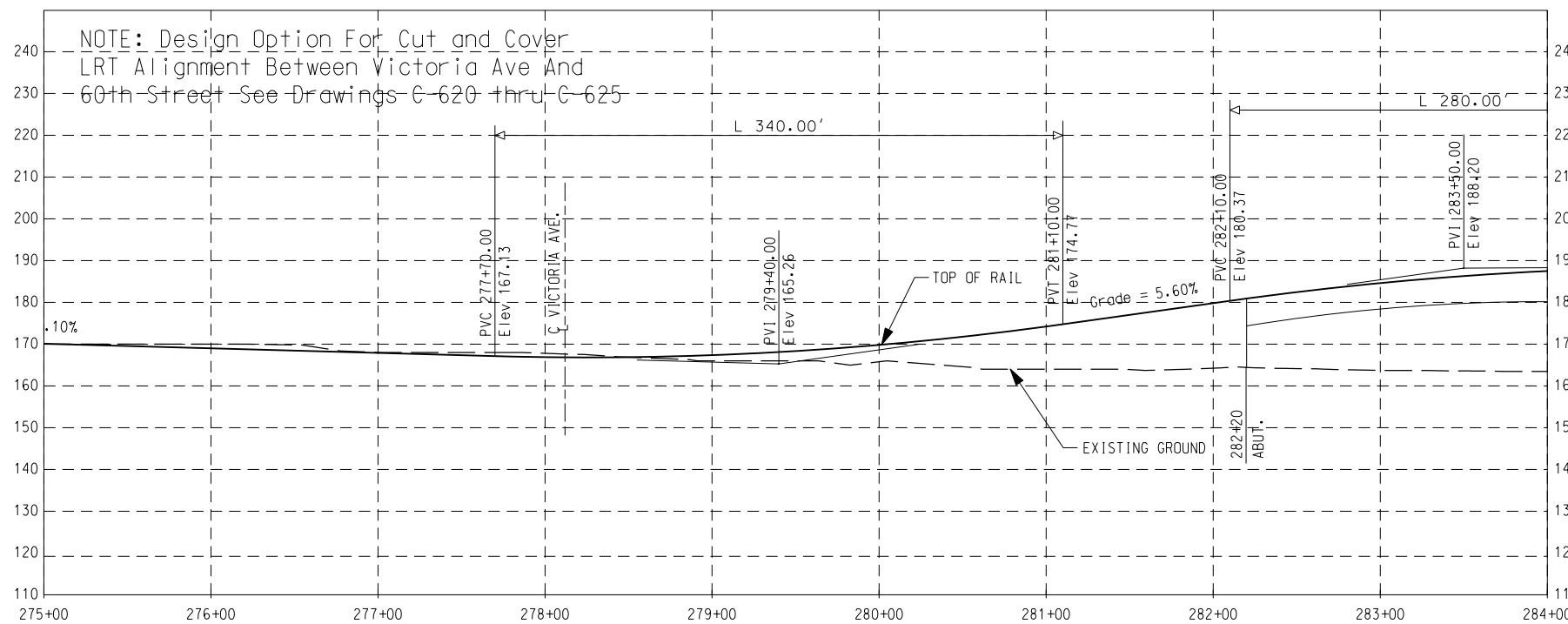
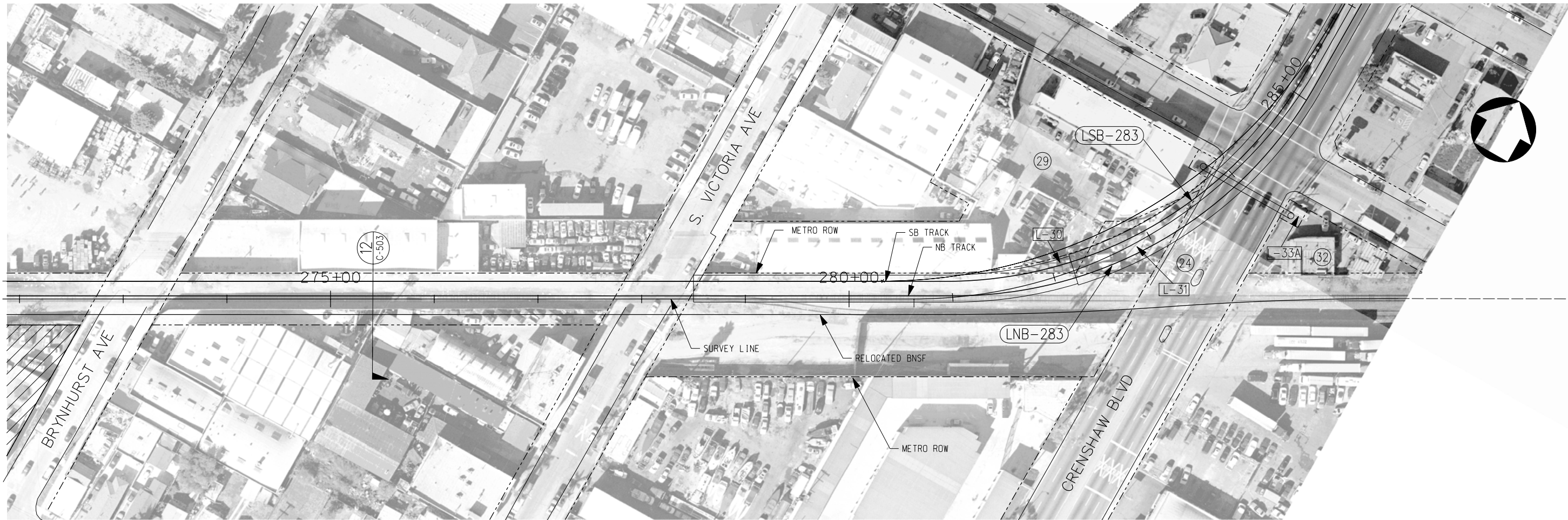
PB Parsons Brinckerhoff
 In Association with Jenkins Gales Martinez, Inc.

PROJECT MANAGER

LIGHT RAIL TRANSIT

PLAN & PROFILE
 STA 261+00 TO STA 275+00

CONTRACT NO	PS-4330-1968
DRAWING NO	C-420
SCALE	HORIZ: 1" = 100' VERT: 1" = 40'
SHEET NO	0



THE PREPARATION OF THIS DRAWING HAS BEEN FINANCED IN PART THROUGH A GRANT FROM THE U.S. DEPARTMENT OF TRANSPORTATION, FEDERAL TRANSIT ADMINISTRATION (FTA), UNDER THE FEDERAL TRANSIT ACT OF 1964, AS AMENDED, AND IN PART BY THE TAXES OF THE CITIZENS OF LOS ANGELES COUNTY AND OF THE STATE OF CALIFORNIA.

REV	DATE	BY	APP	REG NO	EXPIRES	SEAL HOLDER	DESCRIPTION

DESIGNED BY	
DRAWN BY	
CHECKED BY	
IN CHARGE	
DATE	



LOS ANGELES COUNTY METROPOLITAN TRANSPORTATION AUTHORITY
Crenshaw Transit Corridor Project

Parsons Brinckerhoff
In Association with
Jenkins Gales Martinez, Inc.

PROJECT MANAGER

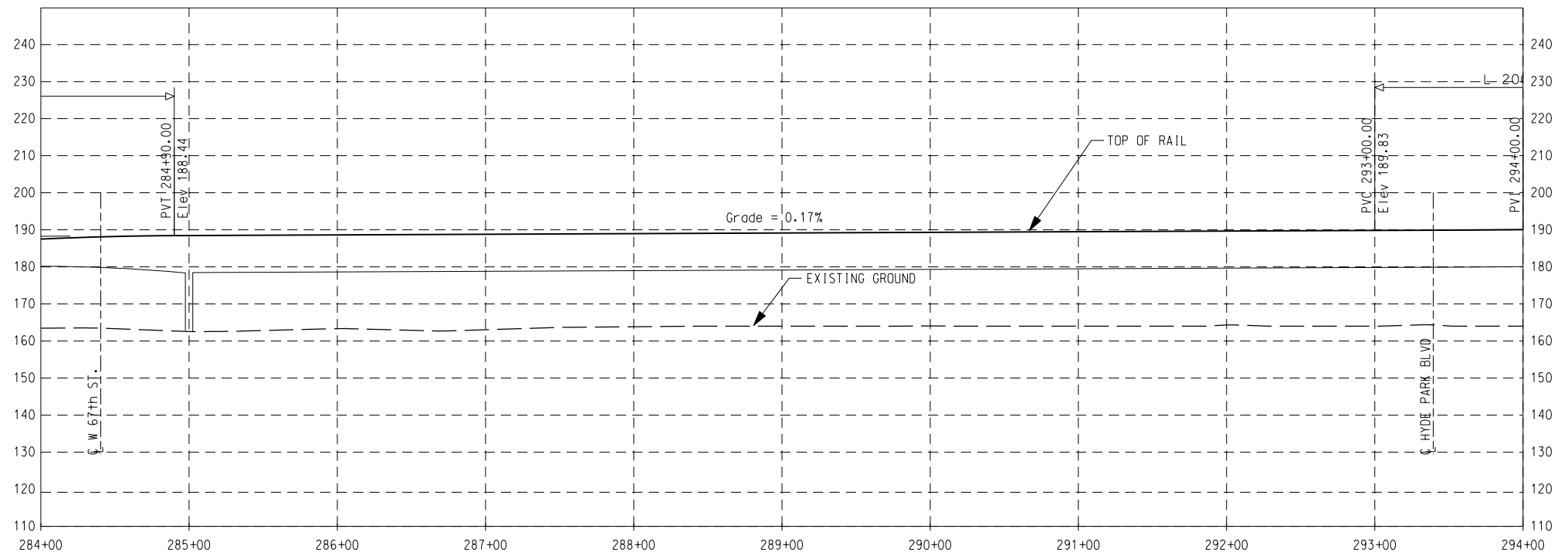
LIGHT RAIL TRANSIT

PLAN & PROFILE
STA 275+00 TO STA 284+00

CONTRACT NO	PS-4330-1968
DRAWING NO	C-421
REV	0
SCALE	HORIZ: 1" = 100' VERT: 1" = 40'
SHEET NO	



NOTE: Design Option For Cut and Cover LRT Alignment Between Victoria Ave And 60th Street See Drawings C-620 thru C-625



THE PREPARATION OF THIS DRAWING HAS BEEN FINANCED IN PART THROUGH A GRANT FROM THE U.S. DEPARTMENT OF TRANSPORTATION, FEDERAL TRANSIT ADMINISTRATION (FTA), UNDER THE FEDERAL TRANSIT ACT OF 1964, AS AMENDED, AND IN PART BY THE TAXES OF THE CITIZENS OF LOS ANGELES COUNTY AND OF THE STATE OF CALIFORNIA.

REV	DATE	BY	APP	REG NO	EXPIRES	SEAL HOLDER	DESCRIPTION

DESIGNED BY	
DRAWN BY	
CHECKED BY	
IN CHARGE	
DATE	

M Metro LOS ANGELES COUNTY METROPOLITAN TRANSPORTATION AUTHORITY
Crenshaw Transit Corridor Project

PB Parsons Brinckerhoff
 In Association with Jenkins Gales Martinez, Inc.

PROJECT MANAGER

LIGHT RAIL TRANSIT

PLAN & PROFILE
 STA 284+00 TO STA 294+00

CONTRACT NO PS-4330-1968
 DRAWING NO C-422 REV 0
 SCALE HORIZ: 1" = 100'
 VERT: 1" = 40'
 SHEET NO