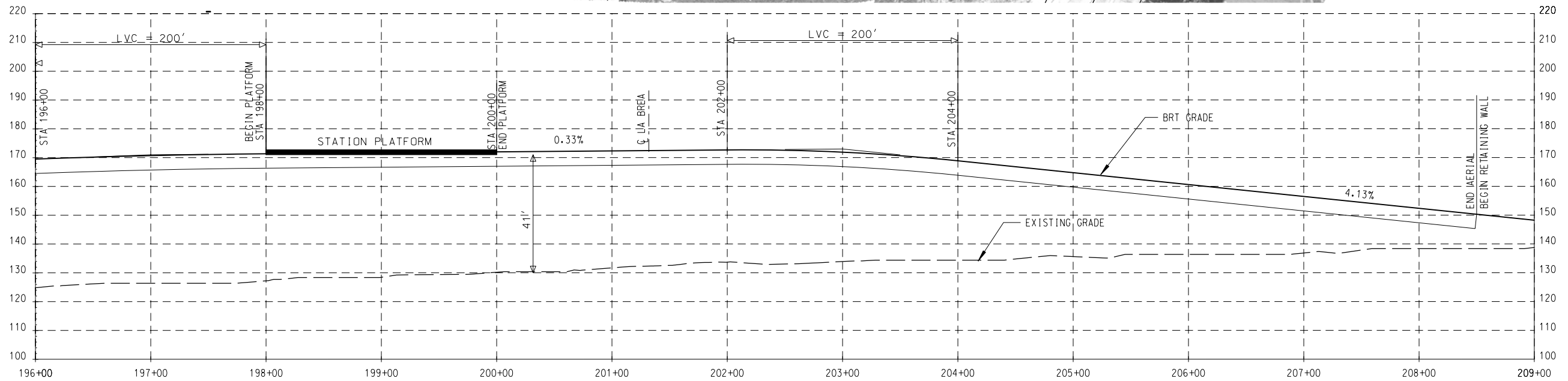
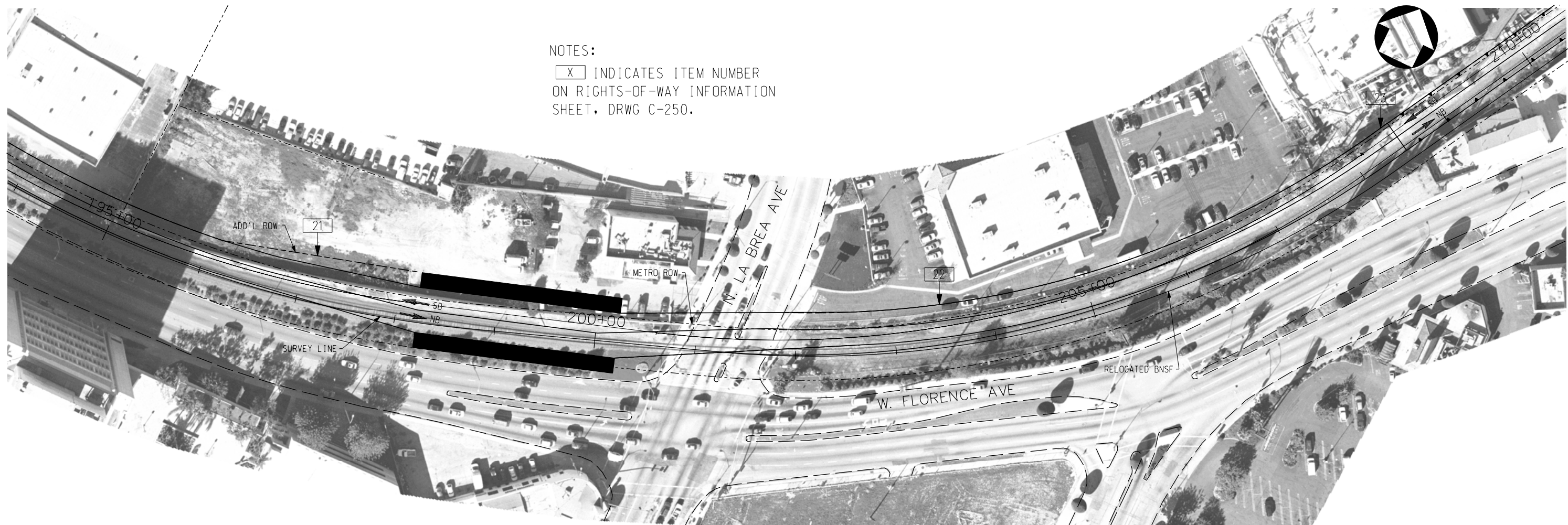


NOTES:  
 [X] INDICATES ITEM NUMBER  
 ON RIGHTS-OF-WAY INFORMATION  
 SHEET, DRWG C-250.



LEGEND  
 BRT IN EXCLUSIVE BUSWAY  
 BRT STATION AREA

THE PREPARATION OF THIS DRAWING HAS BEEN FINANCED IN PART THROUGH A GRANT FROM THE U.S. DEPARTMENT OF TRANSPORTATION, FEDERAL TRANSIT ADMINISTRATION (FTA), UNDER THE FEDERAL TRANSIT ACT OF 1964, AS AMENDED, AND IN PART BY THE TAXES OF THE CITIZENS OF LOS ANGELES COUNTY AND OF THE STATE OF CALIFORNIA.						
REV	DATE	BY	APP	REG NO	EXPIRES	SEAL HOLDER

DESIGNED BY	
DRAWN BY	
CHECKED BY	
IN CHARGE	
DATE	

**M Metro**  
**LOS ANGELES COUNTY METROPOLITAN TRANSPORTATION AUTHORITY**  
 Crenshaw Transit Corridor Project

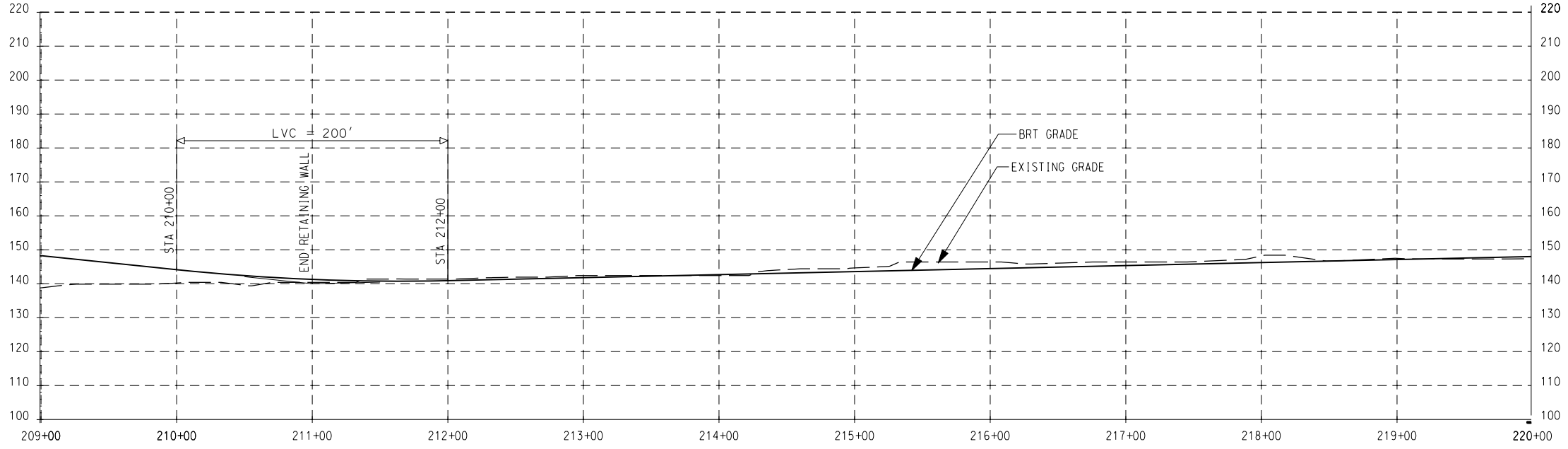
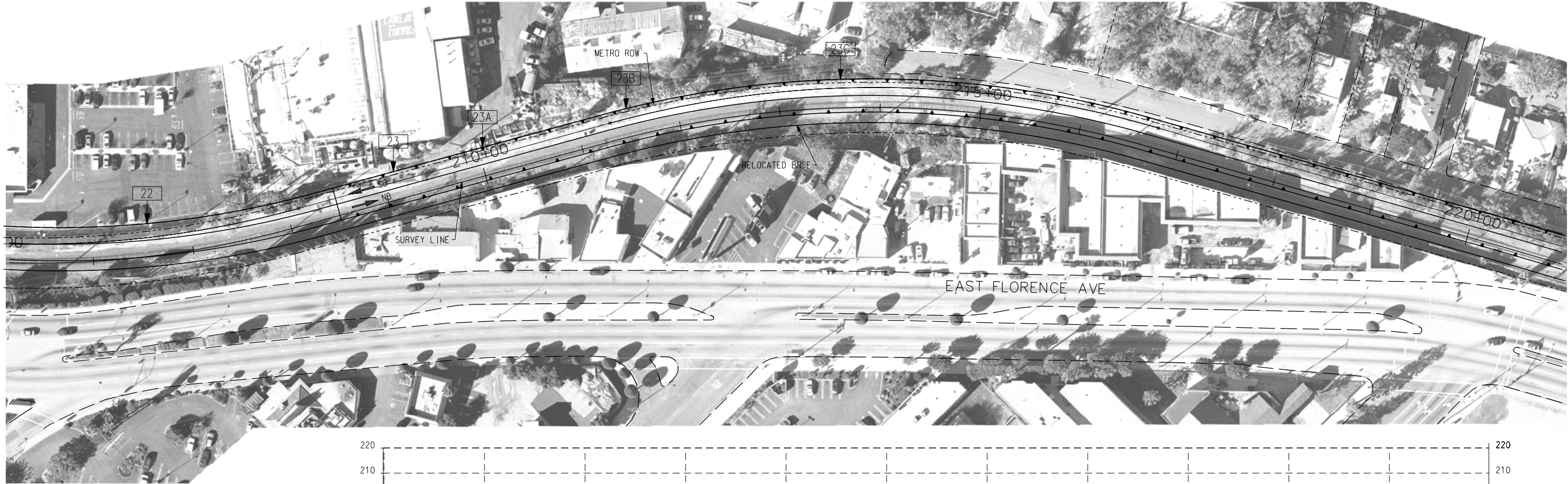
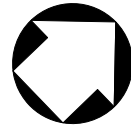
**PB Parsons Brinckerhoff**  
 In Association with Jenkins Gales Martinez, Inc.

PROJECT MANAGER

**BUS RAPID TRANSIT**

PLAN AND PROFILE  
 STA 196+00 TO STA 209+00

CONTRACT NO. PS-4330-1968  
 DRAWING NO. C-115  
 SCALE: HORIZ: 1" = 100'  
 VERT: 1" = 40'  
 SHEET NO. 0



NOTES:  
 [X] INDICATES ITEM NUMBER  
 ON RIGHTS-OF-WAY INFORMATION  
 SHEET, DRWG C-250.

LEGEND  
 ← BRT IN EXCLUSIVE BUSWAY  
 →

THE PREPARATION OF THIS DRAWING HAS BEEN FINANCED IN PART THROUGH A GRANT FROM THE U.S. DEPARTMENT OF TRANSPORTATION, FEDERAL TRANSIT ADMINISTRATION (FTA), UNDER THE FEDERAL TRANSIT ACT OF 1964, AS AMENDED, AND IN PART BY THE TAXES OF THE CITIZENS OF LOS ANGELES COUNTY AND OF THE STATE OF CALIFORNIA.							
REV	DATE	BY	APP	REG NO	EXPIRES	SEAL HOLDER	DESCRIPTION

DESIGNED BY	
DRAWN BY	
CHECKED BY	
IN CHARGE	
DATE	

**M Metro**  
**LOS ANGELES COUNTY METROPOLITAN TRANSPORTATION AUTHORITY**  
 Crenshaw Transit Corridor Project

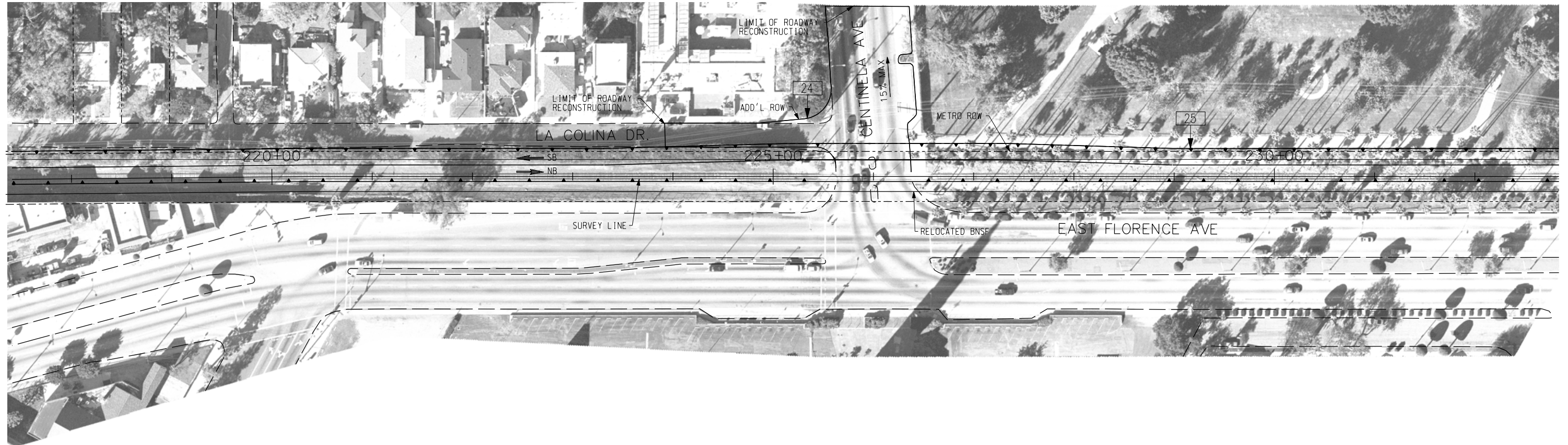
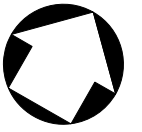
**PB Parsons Brinckerhoff**  
 In Association with  
 Jenkins Gales Martinez, Inc.

PROJECT MANAGER

**BUS RAPID TRANSIT**

PLAN AND PROFILE  
 STA 209+00 TO STA 220+00

CONTRACT NO. PS-4330-1968  
 DRAWING NO. C-116 REV 0  
 SCALE: HORIZ: 1" = 100'  
 VERT: 1" = 40'  
 SHEET NO.



NOTES:

☒ INDICATES ITEM NUMBER ON RIGHTS-OF-WAY INFORMATION SHEET, DRWG C-250.

LEGEND

↔ BRT IN EXCLUSIVE BUSWAY

THE PREPARATION OF THIS DRAWING HAS BEEN FINANCED IN PART THROUGH A GRANT FROM THE U.S. DEPARTMENT OF TRANSPORTATION, FEDERAL TRANSIT ADMINISTRATION (FTA), UNDER THE FEDERAL TRANSIT ACT OF 1964, AS AMENDED, AND IN PART BY THE TAXES OF THE CITIZENS OF LOS ANGELES COUNTY AND OF THE STATE OF CALIFORNIA.

REV	DATE	BY	APP	REG NO	EXPIRES	SEAL HOLDER	DESCRIPTION

DESIGNED BY	
DRAWN BY	
CHECKED BY	
IN CHARGE	
DATE	



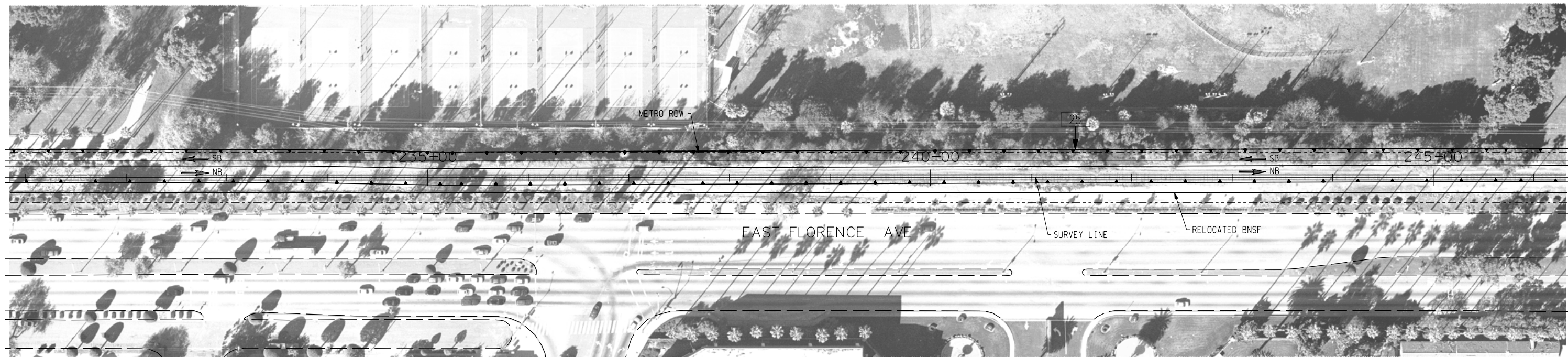
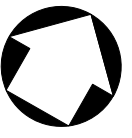
**LOS ANGELES COUNTY METROPOLITAN TRANSPORTATION AUTHORITY**  
Crenshaw Transit Corridor Project

**Parsons Brinckerhoff**  
In Association with  
Jenkins Gales Martinez, Inc.

PROJECT MANAGER

**BUS RAPID TRANSIT**  
PLAN  
STA 220+00 TO STA 232+00

CONTRACT NO PS-4330-1968	
DRAWING NO C-117	REV 0
SCALE 1"=100'	
SHEET NO	



NOTES:

[X] INDICATES ITEM NUMBER ON RIGHTS-OF-WAY INFORMATION SHEET, DRWG C-250.

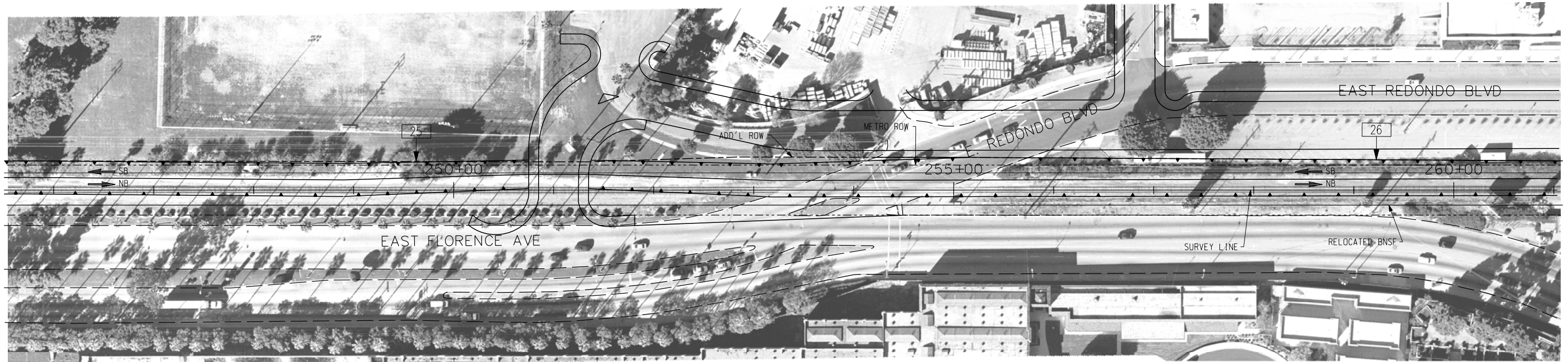
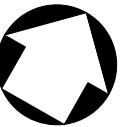
LEGEND

↔ BRT IN EXCLUSIVE BUSWAY

THE PREPARATION OF THIS DRAWING HAS BEEN FINANCED IN PART THROUGH A GRANT FROM THE U.S. DEPARTMENT OF TRANSPORTATION, FEDERAL TRANSIT ADMINISTRATION (FTA), UNDER THE FEDERAL TRANSIT ACT OF 1964, AS AMENDED, AND IN PART BY THE TAXES OF THE CITIZENS OF LOS ANGELES COUNTY AND OF THE STATE OF CALIFORNIA.	DESIGNED BY	<b>LOS ANGELES COUNTY METROPOLITAN TRANSPORTATION AUTHORITY</b> Crenshaw Transit Corridor Project	<b>BUS RAPID TRANSIT</b>  PLAN STA 232+00 TO STA 246+00	CONTRACT NO	PS-4330-1968		
	DRAWN BY			DRAWING NO	C-118	REV	0
CHECKED BY	SCALE			1"=100'	SHEET NO		
IN CHARGE	PROJECT MANAGER						
DATE							
REV	DATE	BY	APP	REG NO	EXPIRES	SEAL HOLDER	DESCRIPTION



**Parsons Brinckerhoff**  
 In Association with  
 Jenkins Gales Martinez, Inc.



NOTES:

[X] INDICATES ITEM NUMBER  
ON RIGHTS-OF-WAY INFORMATION  
SHEET, DRWG C-250.

LEGEND

↔ BRT IN EXCLUSIVE BUSWAY

THE PREPARATION OF THIS DRAWING HAS BEEN FINANCED IN PART THROUGH A GRANT FROM THE U.S. DEPARTMENT OF TRANSPORTATION, FEDERAL TRANSIT ADMINISTRATION (FTA), UNDER THE FEDERAL TRANSIT ACT OF 1964, AS AMENDED, AND IN PART BY THE TAXES OF THE CITIZENS OF LOS ANGELES COUNTY AND OF THE STATE OF CALIFORNIA.

REV	DATE	BY	APP	REG NO	EXPIRES	SEAL HOLDER	DESCRIPTION

DESIGNED BY	
DRAWN BY	
CHECKED BY	
IN CHARGE	
DATE	



**LOS ANGELES COUNTY METROPOLITAN TRANSPORTATION AUTHORITY**  
Crenshaw Transit Corridor Project

**Parsons Brinckerhoff**  
In Association with  
Jenkins Gales Martinez, Inc.

PROJECT MANAGER

**BUS RAPID TRANSIT**  
PLAN  
STA 246+00 TO STA 261+00

CONTRACT NO PS-4330-1968	
DRAWING NO C-119	REV 0
SCALE 1"=100'	
SHEET NO	