

THE PREPARATION OF THIS DRAWING HAS BEEN FINANCED IN PART THROUGH A GRANT FROM THE U.S. DEPARTMENT OF TRANSPORTATION, FEDERAL TRANSIT ADMINISTRATION (FTA), UNDER THE FEDERAL TRANSIT ACT OF 1964, AS AMENDED, AND IN PART BY THE TAXES OF THE CITIZENS OF LOS ANGELES COUNTY AND OF THE STATE OF CALIFORNIA.

REV	DATE	BY	APP	REG NO	EXPIRES	SEAL HOLDER	DESCRIPTION

DESIGNED BY	
DRAWN BY	
CHECKED BY	
IN CHARGE	
DATE	

**M** Metro  
**LOS ANGELES COUNTY METROPOLITAN TRANSPORTATION AUTHORITY**  
 Crenshaw Transit Corridor Project

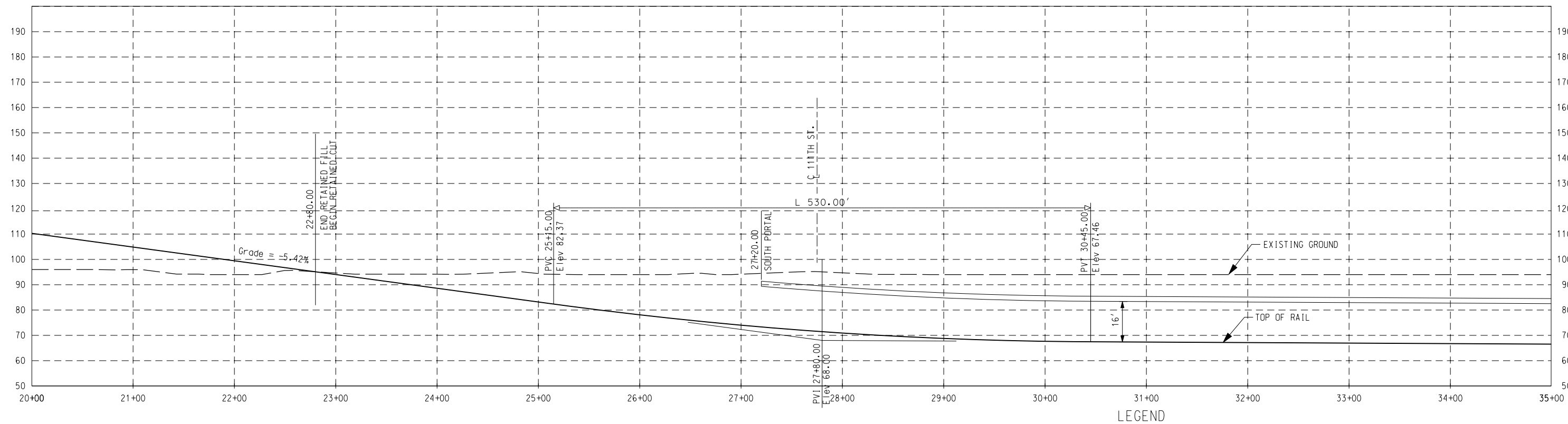
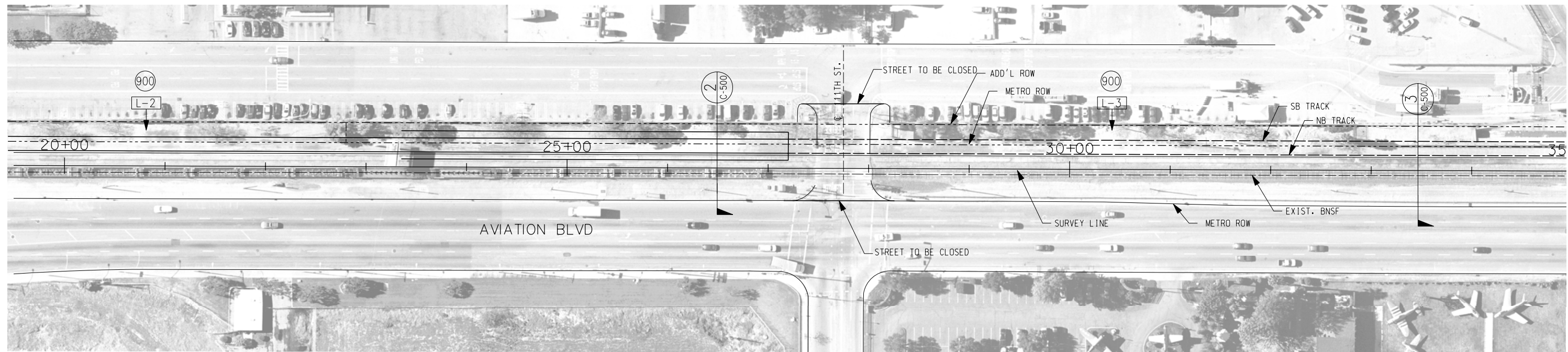
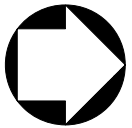
**PB** Parsons Brinckerhoff  
 In Association with  
 Jenkins Gales Martinez, Inc.

PROJECT MANAGER

**LIGHT RAIL TRANSIT**

PLAN & PROFILE  
 STA 6+60 TO STA 20+00

CONTRACT NO	PS-4330-1968
DRAWING NO	C-401
SCALE	HORIZ: 1"=100' VERT: 1"=40'
SHEET NO	0



THE PREPARATION OF THIS DRAWING HAS BEEN FINANCED IN PART THROUGH A GRANT FROM THE U.S. DEPARTMENT OF TRANSPORTATION, FEDERAL TRANSIT ADMINISTRATION (FTA), UNDER THE FEDERAL TRANSIT ACT OF 1964, AS AMENDED, AND IN PART BY THE TAXES OF THE CITIZENS OF LOS ANGELES COUNTY AND OF THE STATE OF CALIFORNIA.

REV	DATE	BY	APP	REG NO	EXPIRES	SEAL HOLDER	DESCRIPTION

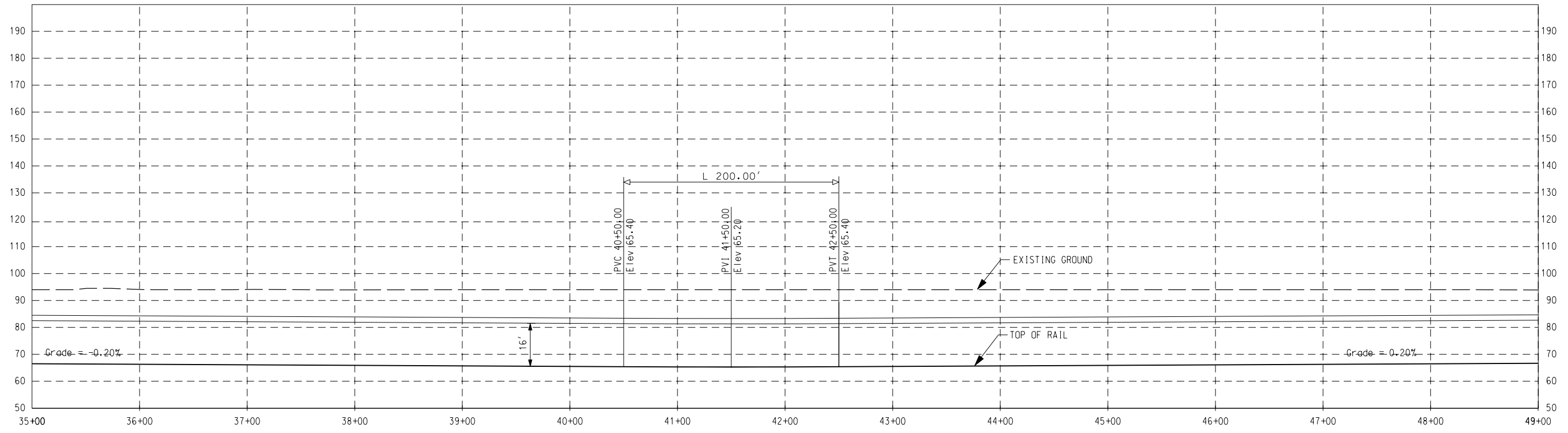
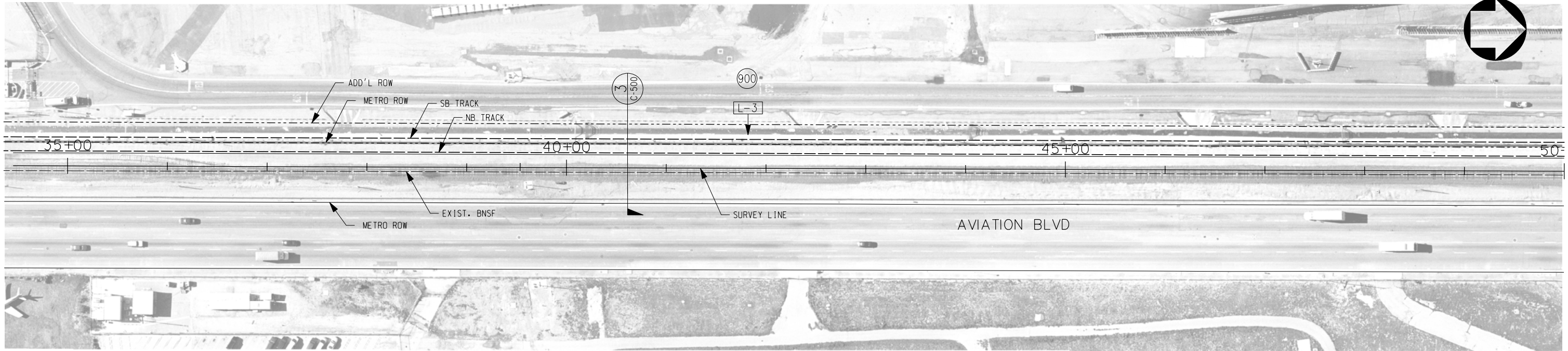
DESIGNED BY	
DRAWN BY	
CHECKED BY	
IN CHARGE	
DATE	

**M Metro** LOS ANGELES COUNTY METROPOLITAN TRANSPORTATION AUTHORITY  
**PB** Parsons Brinckerhoff  
 In Association with Jenkins Gales Martinez, Inc.

PROJECT MANAGER

LIGHT RAIL TRANSIT  
 PLAN & PROFILE  
 STA 20+00 TO STA 35+00

CONTRACT NO	PS-4330-1968
DRAWING NO	C-402
SCALE	HORIZ: 1" = 100' VERT: 1" = 40'
SHEET NO	0



THE PREPARATION OF THIS DRAWING HAS BEEN FINANCED IN PART THROUGH A GRANT FROM THE U.S. DEPARTMENT OF TRANSPORTATION, FEDERAL TRANSIT ADMINISTRATION (FTA), UNDER THE FEDERAL TRANSIT ACT OF 1964, AS AMENDED, AND IN PART BY THE TAXES OF THE CITIZENS OF LOS ANGELES COUNTY AND OF THE STATE OF CALIFORNIA.

REV	DATE	BY	APP	REG NO	EXPIRES	SEAL HOLDER	DESCRIPTION

DESIGNED BY	
DRAWN BY	
CHECKED BY	
IN CHARGE	
DATE	

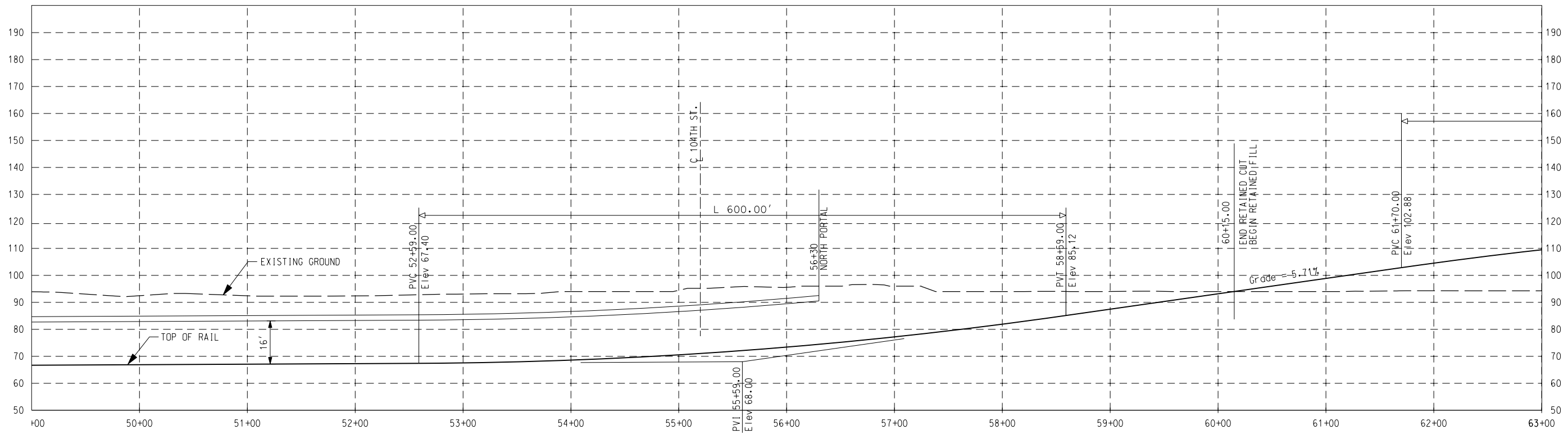
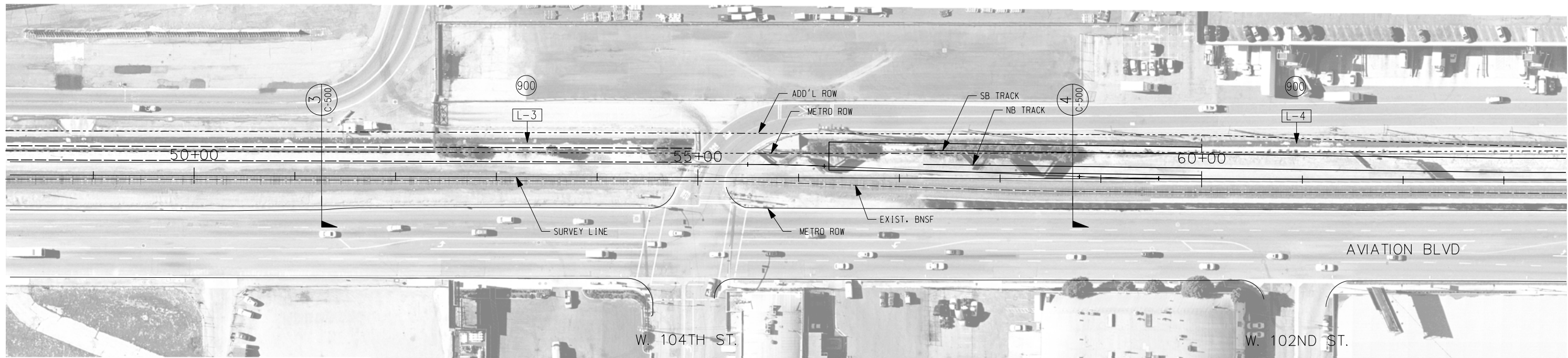
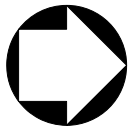
**M Metro**  
**LOS ANGELES COUNTY METROPOLITAN TRANSPORTATION AUTHORITY**  
 Crenshaw Transit Corridor Project

**PB Parsons Brinckerhoff**  
 In Association with  
 Jenkins Gales Martinez, Inc.

PROJECT MANAGER

LIGHT RAIL TRANSIT  
 PLAN & PROFILE  
 STA 35+00 TO STA 49+00

CONTRACT NO	PS-4330-1968
DRAWING NO	C-403
SCALE	HORIZ: 1" = 100' VERT: 1" = 40'
SHEET NO	0



THE PREPARATION OF THIS DRAWING HAS BEEN FINANCED IN PART THROUGH A GRANT FROM THE U.S. DEPARTMENT OF TRANSPORTATION, FEDERAL TRANSIT ADMINISTRATION (FTA), UNDER THE FEDERAL TRANSIT ACT OF 1964, AS AMENDED, AND IN PART BY THE TAXES OF THE CITIZENS OF LOS ANGELES COUNTY AND OF THE STATE OF CALIFORNIA.

REV	DATE	BY	APP	REG NO	EXPIRES	SEAL HOLDER	DESCRIPTION

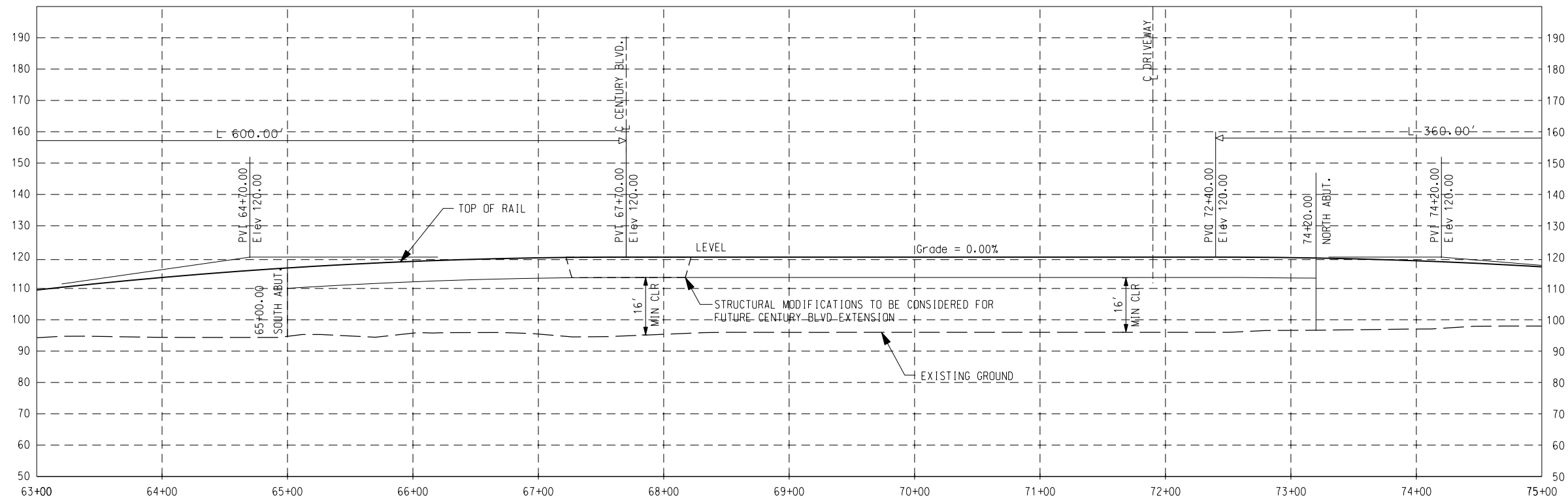
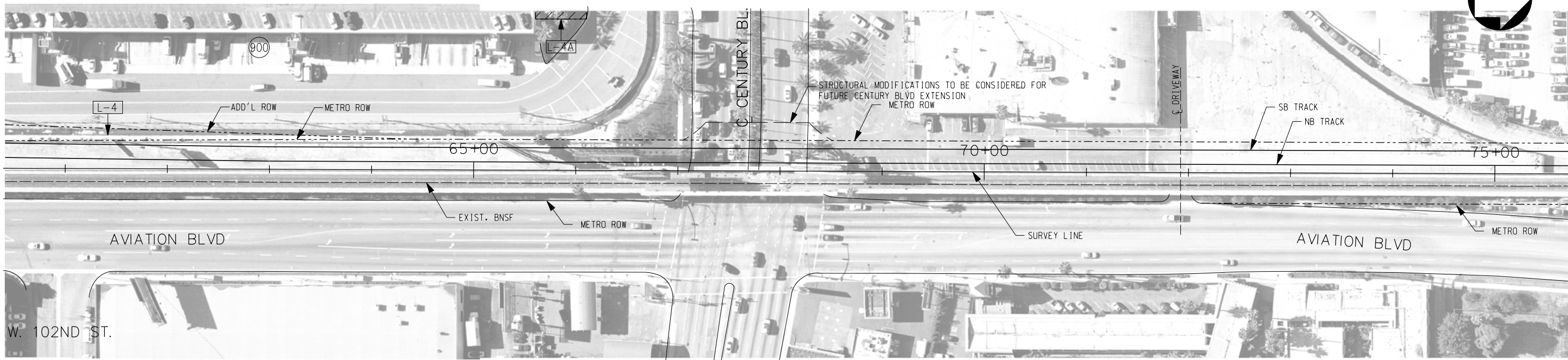
DESIGNED BY	
DRAWN BY	
CHECKED BY	
IN CHARGE	
DATE	

**M Metro** LOS ANGELES COUNTY METROPOLITAN TRANSPORTATION AUTHORITY  
**PB 100 YEARS** Crenshaw Transit Corridor Project  
**Parsons Brinckerhoff**  
 In Association with Jenkins Gales Martinez, Inc.  
 PROJECT MANAGER

LIGHT RAIL TRANSIT  
 PLAN & PROFILE  
 STA 49+00 TO STA 63+00

CONTRACT NO	PS-4330-1968
DRAWING NO	C-404
SCALE	HORIZ: 1" = 100' VERT: 1" = 40'
SHEET NO	0





THE PREPARATION OF THIS DRAWING HAS BEEN FINANCED IN PART THROUGH A GRANT FROM THE U.S. DEPARTMENT OF TRANSPORTATION, FEDERAL TRANSIT ADMINISTRATION, FEDERAL TRANSIT ADMINISTRATION ACT OF 1964, AS AMENDED, AND IN PART BY THE TAXES OF THE CITIZENS OF LOS ANGELES COUNTY AND OF THE STATE OF CALIFORNIA.

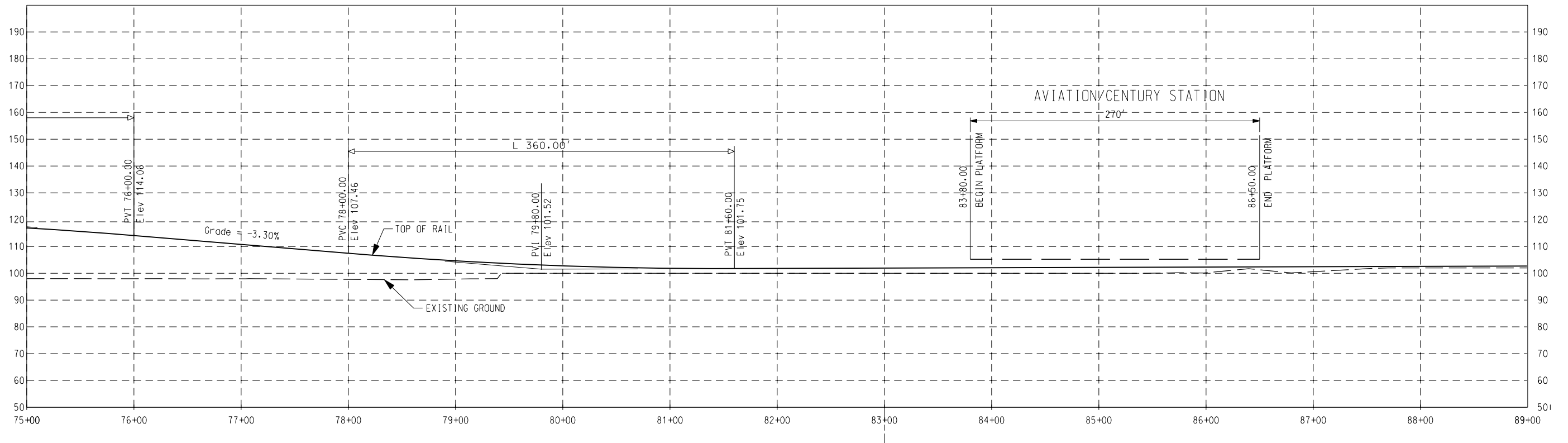
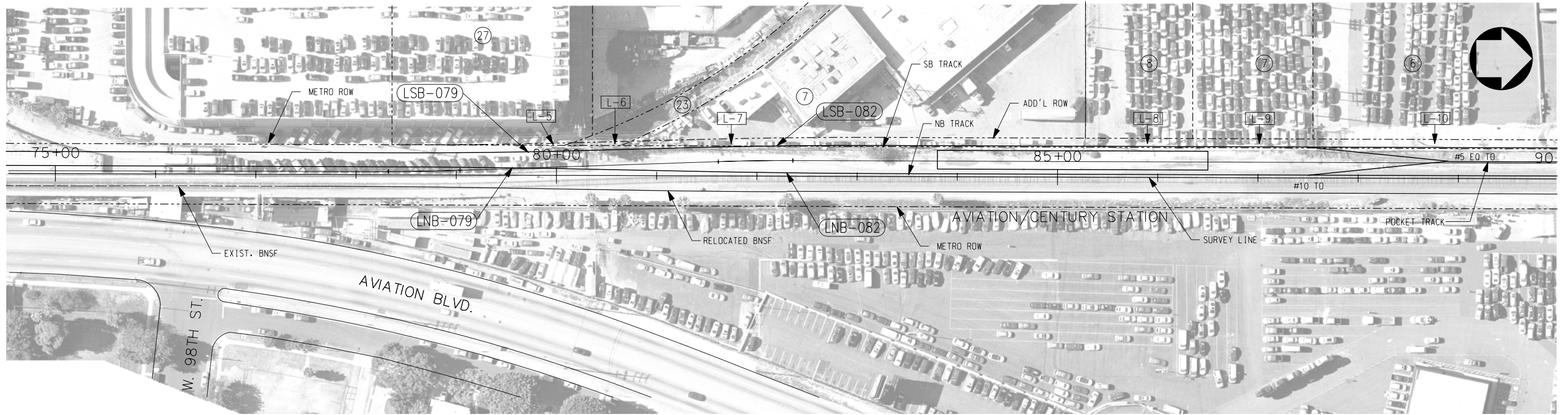
REV	DATE	BY	APP	REG NO	EXPIRES	SEAL HOLDER	DESCRIPTION

DESIGNED BY	
DRAWN BY	
CHECKED BY	
IN CHARGE	
DATE	

**M Metro** LOS ANGELES COUNTY METROPOLITAN TRANSPORTATION AUTHORITY  
**PB 100 YEARS** Crenshaw Transit Corridor Project  
**Parsons Brinckerhoff**  
 In Association with Jenkins Gales Martinez, Inc.  
 PROJECT MANAGER

LIGHT RAIL TRANSIT  
 PLAN & PROFILE  
 STA 63+00 TO STA 75+00

CONTRACT NO	PS-4330-1968
DRAWING NO	C-405
SCALE	HORIZ: 1" = 100' VERT: 1" = 40'
SHEET NO	0



THE PREPARATION OF THIS DRAWING HAS BEEN FINANCED IN PART THROUGH A GRANT FROM THE U.S. DEPARTMENT OF TRANSPORTATION, FEDERAL TRANSIT ADMINISTRATION (FTA), UNDER THE FEDERAL TRANSIT ACT OF 1964, AS AMENDED, AND IN PART BY THE TAXES OF THE CITIZENS OF LOS ANGELES COUNTY AND OF THE STATE OF CALIFORNIA.

REV	DATE	BY	APP	REG NO	EXPIRES	SEAL HOLDER	DESCRIPTION

DESIGNED BY	
DRAWN BY	
CHECKED BY	
IN CHARGE	
DATE	

**M Metro** LOS ANGELES COUNTY METROPOLITAN TRANSPORTATION AUTHORITY  
Crenshaw Transit Corridor Project

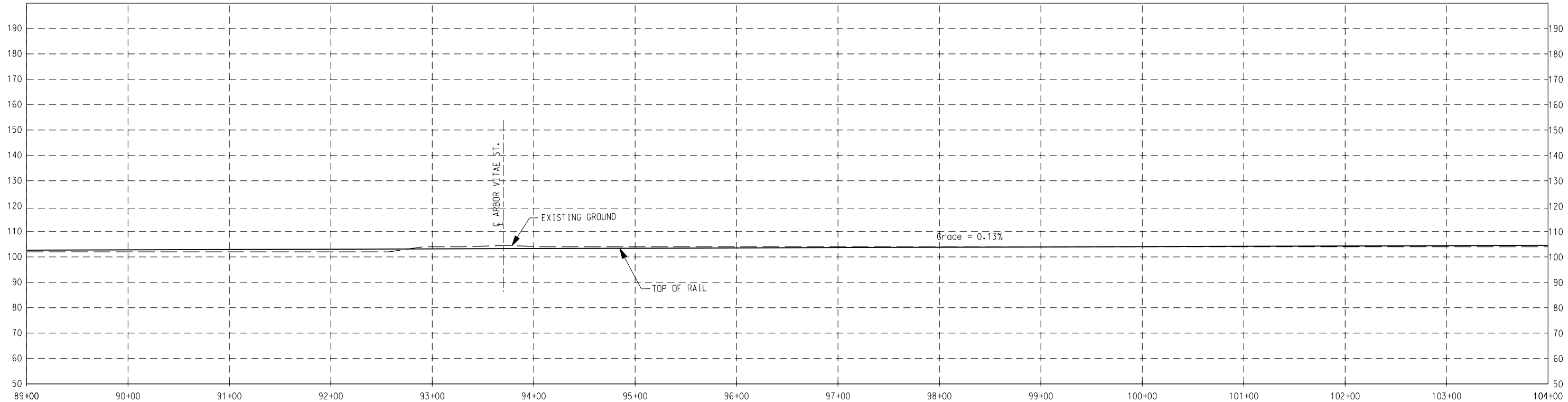
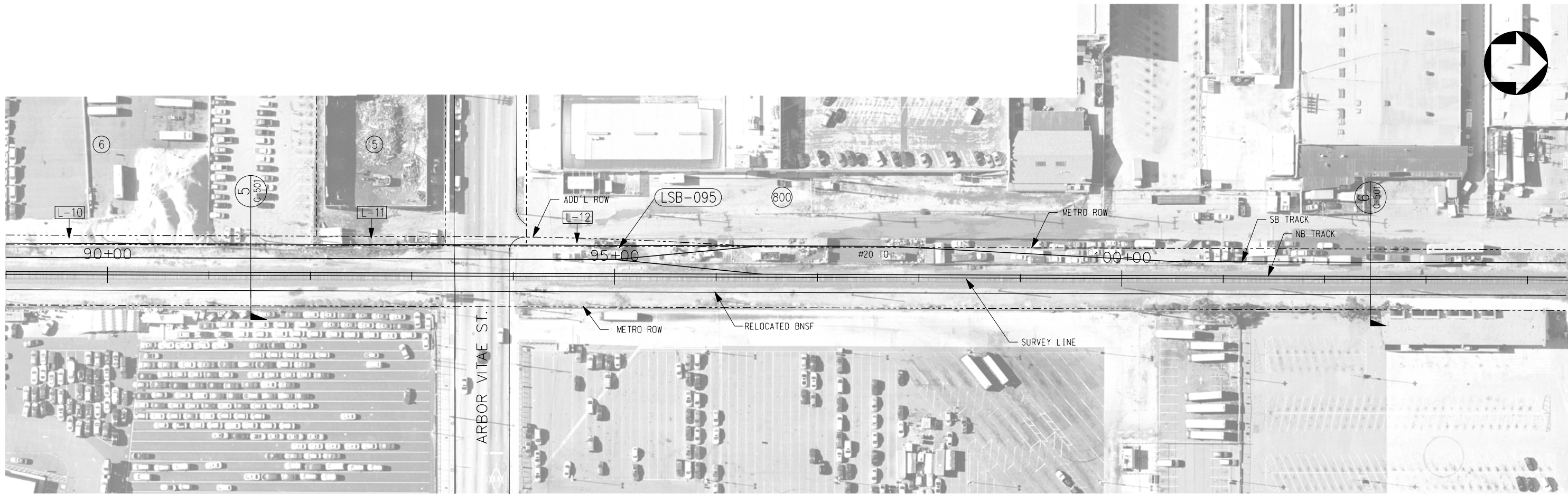
**PB** Parsons Brinckerhoff  
In Association with Jenkins Gales Martinez, Inc.

PROJECT MANAGER

LIGHT RAIL TRANSIT

PLAN & PROFILE  
STA 75+00 TO STA 89+00

CONTRACT NO	PS-4330-1968
DRAWING NO	C-406
REV	0
SCALE	HORIZ: 1" = 100' VERT: 1" = 40'
SHEET NO	



THE PREPARATION OF THIS DRAWING HAS BEEN FINANCED IN PART THROUGH A GRANT FROM THE U.S. DEPARTMENT OF TRANSPORTATION, FEDERAL TRANSIT ADMINISTRATION (FTA), UNDER THE FEDERAL TRANSIT ACT OF 1964, AS AMENDED, AND IN PART BY THE TAXES OF THE CITIZENS OF LOS ANGELES COUNTY AND OF THE STATE OF CALIFORNIA.

REV	DATE	BY	APP	REG NO	EXPIRES	SEAL HOLDER	DESCRIPTION

DESIGNED BY	
DRAWN BY	
CHECKED BY	
IN CHARGE	
DATE	

**M Metro** LOS ANGELES COUNTY METROPOLITAN TRANSPORTATION AUTHORITY  
Crenshaw Transit Corridor Project

**PB** Parsons Brinckerhoff  
In Association with Jenkins Gales Martinez, Inc.

PROJECT MANAGER

LIGHT RAIL TRANSIT

PLAN & PROFILE  
STA 89+00 TO STA 104+00

CONTRACT NO. PS-4330-1968  
DRAWING NO. C-407  
SCALE: HORIZ: 1" = 100'  
VERT: 1" = 40'

REV 0  
SHEET NO.