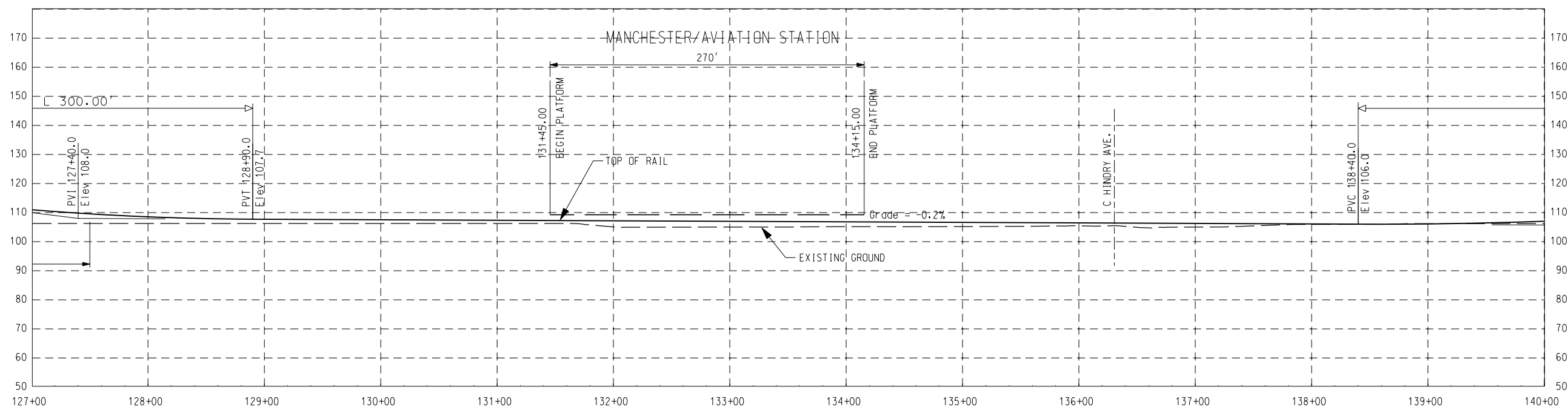


NOTE: Length Of Vertical Curves Do Not Meet Design Criteria Due To Existing Street Gradient And Shall Be Reviewed Further In PE Phase



THE PREPARATION OF THIS DRAWING HAS BEEN FINANCED IN PART THROUGH A GRANT FROM THE U.S. DEPARTMENT OF TRANSPORTATION, FEDERAL TRANSIT ADMINISTRATION (FTA), UNDER THE FEDERAL TRANSIT ACT OF 1964, AS AMENDED, AND IN PART BY THE TAXES OF THE CITIZENS OF LOS ANGELES COUNTY AND OF THE STATE OF CALIFORNIA.

REV	DATE	BY	APP	REG NO	EXPIRES	SEAL HOLDER	DESCRIPTION

DESIGNED BY	
DRAWN BY	
CHECKED BY	
IN CHARGE	
DATE	

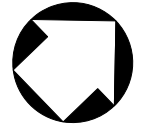
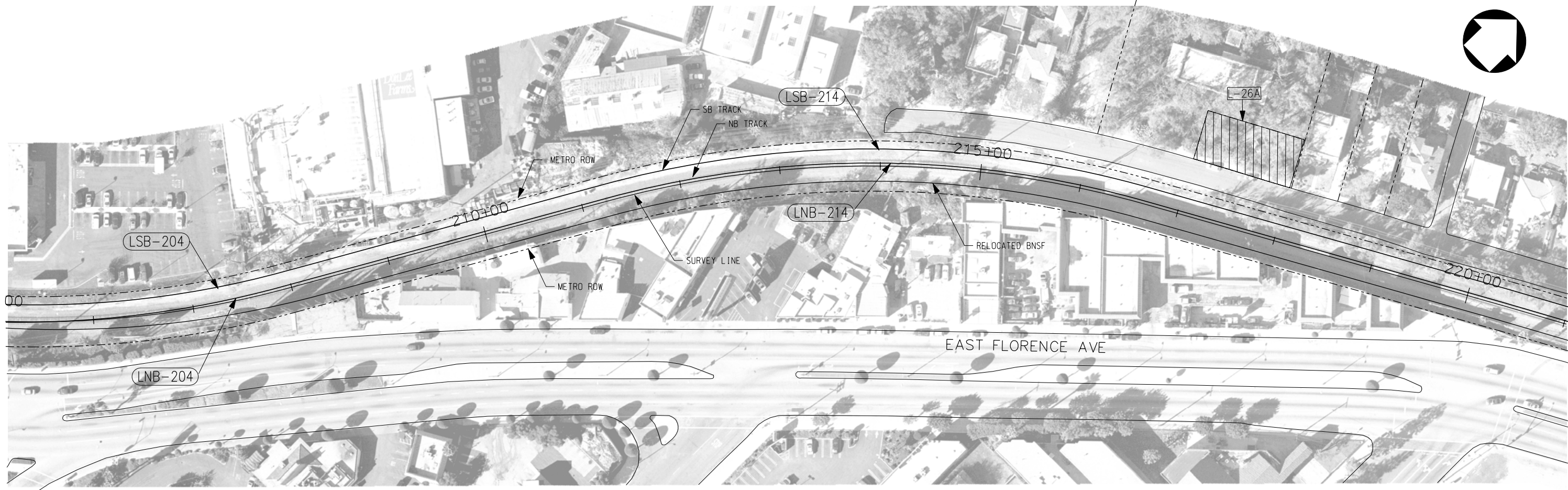
M Metro
LOS ANGELES COUNTY METROPOLITAN TRANSPORTATION AUTHORITY
Crenshaw Transit Corridor Project

PB Parsons Brinckerhoff
 In Association with
 Jenkins Gales Martinez, Inc.

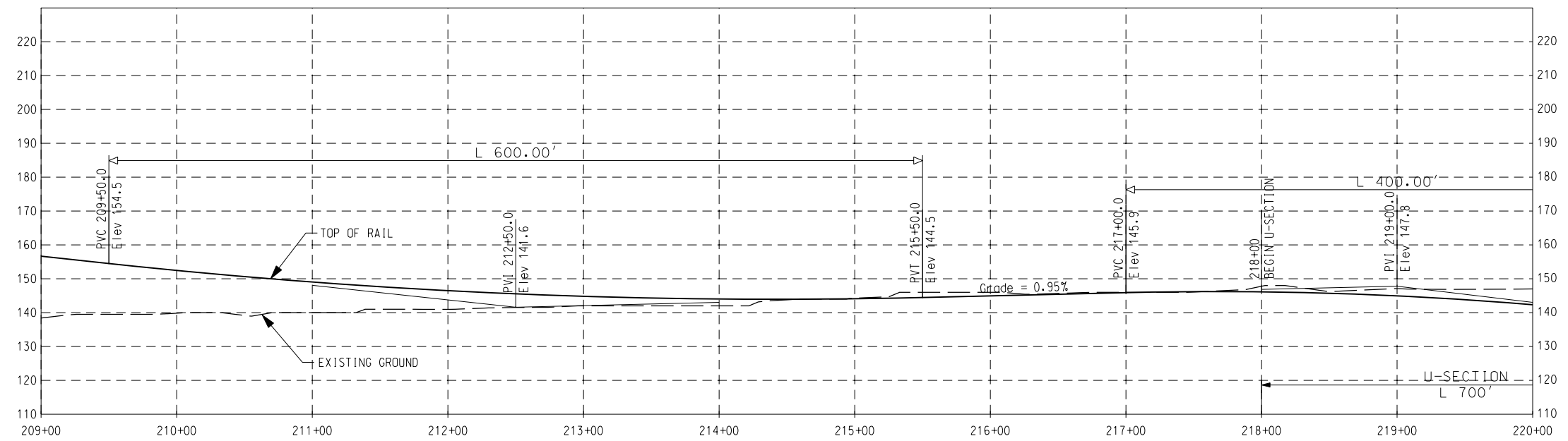
PROJECT MANAGER

LIGHT RAIL TRANSIT
MANCHESTER AVE GRADE SEPARATION
ALTERNATIVE
 PLAN & PROFILE (3 OF 3)
 STA 127+00 TO STA 140+00

CONTRACT NO	PS-4330-1968
DRAWING NO	C-610
SCALE	HORIZ: 1" = 100' VERT: 1" = 40'
SHEET NO	0



NOTE: Length Of Vertical Curves Do Not Meet Design Criteria Due To Existing Street Gradient And Shall Be Reviewed Further In PE Phase



THE PREPARATION OF THIS DRAWING HAS BEEN FINANCED IN PART THROUGH A GRANT FROM THE U.S. DEPARTMENT OF TRANSPORTATION, FEDERAL TRANSIT ADMINISTRATION (FTA), UNDER THE FEDERAL TRANSIT ACT OF 1964, AS AMENDED, AND IN PART BY THE TAXES OF THE CITIZENS OF LOS ANGELES COUNTY AND OF THE STATE OF CALIFORNIA.						
REV	DATE	BY	APP	REG NO	EXPIRES	SEAL HOLDER

DESIGNED BY	
DRAWN BY	
CHECKED BY	
IN CHARGE	
DATE	

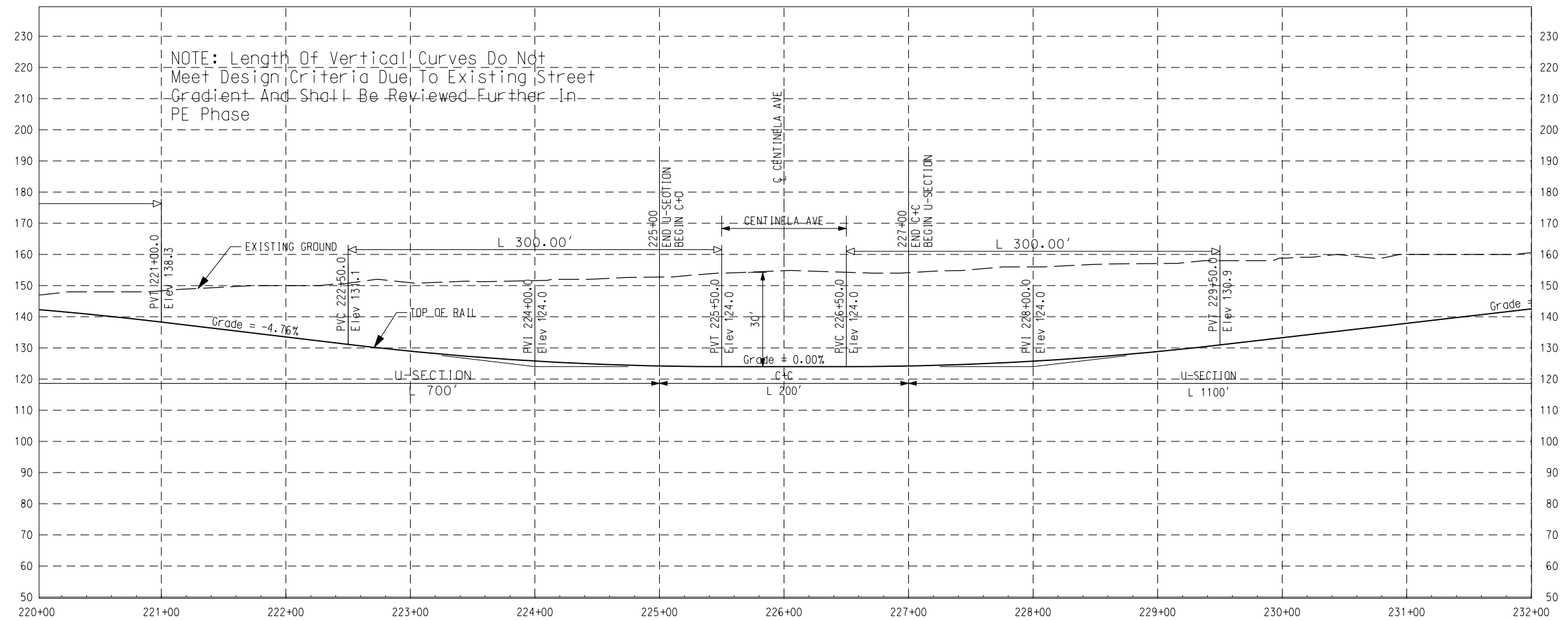
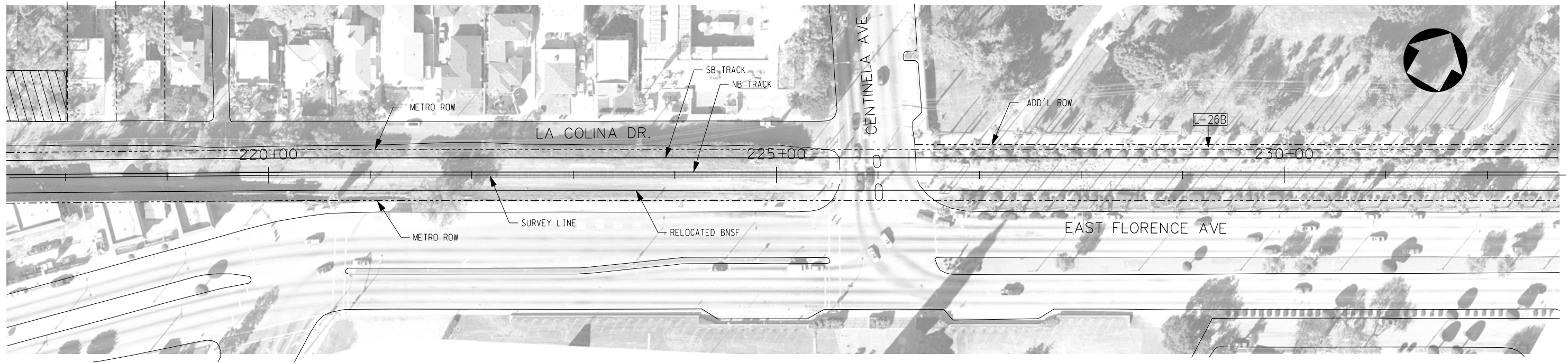
M Metro
LOS ANGELES COUNTY METROPOLITAN TRANSPORTATION AUTHORITY
 Crenshaw Transit Corridor Project

PB Parsons Brinckerhoff
 In Association with Jenkins Gales Martinez, Inc.

PROJECT MANAGER

LIGHT RAIL TRANSIT
 CENTINELA AVE C+C ALTERNATIVE
 PLAN & PROFILE (1 OF 3)
 STA 209+00 TO STA 220+00

CONTRACT NO	PS-4330-1968
DRAWING NO	C-616
REV	0
SCALE	HORIZ: 1" = 100' VERT: 1" = 40'
SHEET NO	



THE PREPARATION OF THIS DRAWING HAS BEEN FINANCED IN PART THROUGH A GRANT FROM THE U.S. DEPARTMENT OF TRANSPORTATION, FEDERAL TRANSIT ADMINISTRATION (FTA), UNDER THE FEDERAL TRANSIT ACT OF 1964, AS AMENDED, AND IN PART BY THE TAXES OF THE CITIZENS OF LOS ANGELES COUNTY AND OF THE STATE OF CALIFORNIA.

REV	DATE	BY	APP	REG NO	EXPIRES	SEAL HOLDER	DESCRIPTION

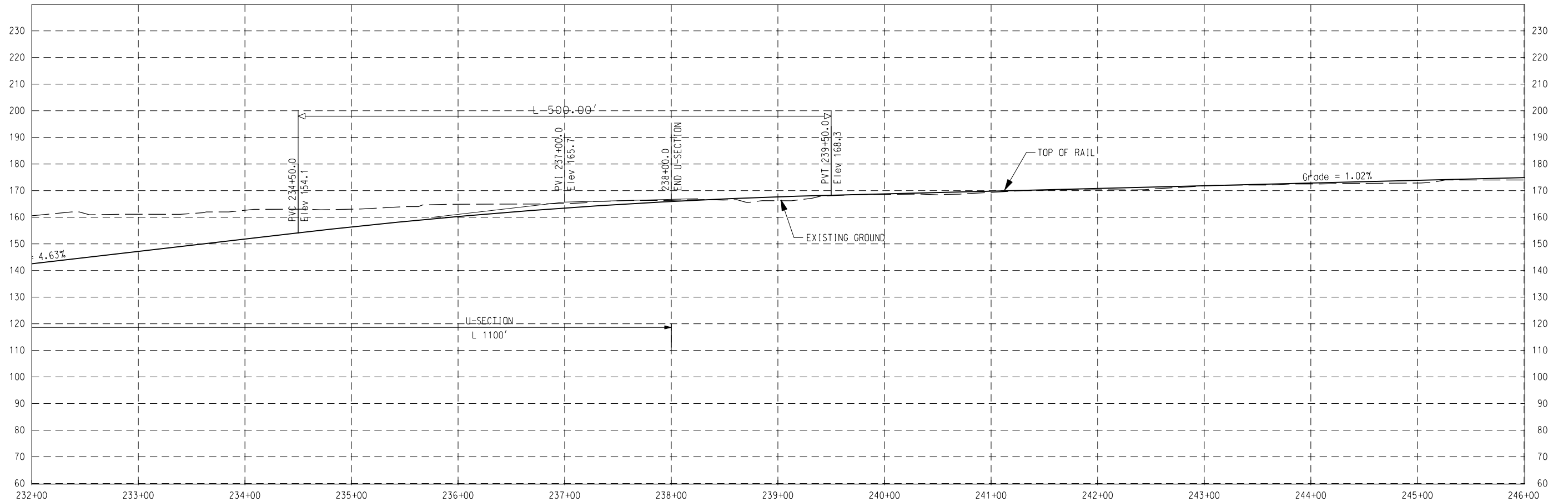
DESIGNED BY	
DRAWN BY	
CHECKED BY	
IN CHARGE	
DATE	



LOS ANGELES COUNTY METROPOLITAN TRANSPORTATION AUTHORITY
Crenshaw Transit Corridor Project
Parsons Brinckerhoff
 In Association with Jenkins Gales Martinez, Inc.

LIGHT RAIL TRANSIT
CENTINELA AVE C+C ALTERNATIVE
PLAN & PROFILE (2 OF 3)
STA 220+00 TO STA 232+00

CONTRACT NO. PS-4330-1968
 DRAWING NO. C-617 REV 0
 SCALE: HORIZ: 1" = 100'
 VERT: 1" = 40'
 SHEET NO.



THE PREPARATION OF THIS DRAWING HAS BEEN FINANCED IN PART THROUGH A GRANT FROM THE U.S. DEPARTMENT OF TRANSPORTATION, FEDERAL TRANSIT ADMINISTRATION (FTA), UNDER THE FEDERAL TRANSIT ACT OF 1964, AS AMENDED, AND IN PART BY THE TAXES OF THE CITIZENS OF LOS ANGELES COUNTY AND OF THE STATE OF CALIFORNIA.

REV	DATE	BY	APP	REG NO	EXPIRES	SEAL HOLDER	DESCRIPTION

DESIGNED BY	
DRAWN BY	
CHECKED BY	
IN CHARGE	
DATE	

M Metro
LOS ANGELES COUNTY METROPOLITAN TRANSPORTATION AUTHORITY
Crenshaw Transit Corridor Project

PB Parsons Brinckerhoff
 In Association with
 Jenkins Gales Martinez, Inc.

PROJECT MANAGER

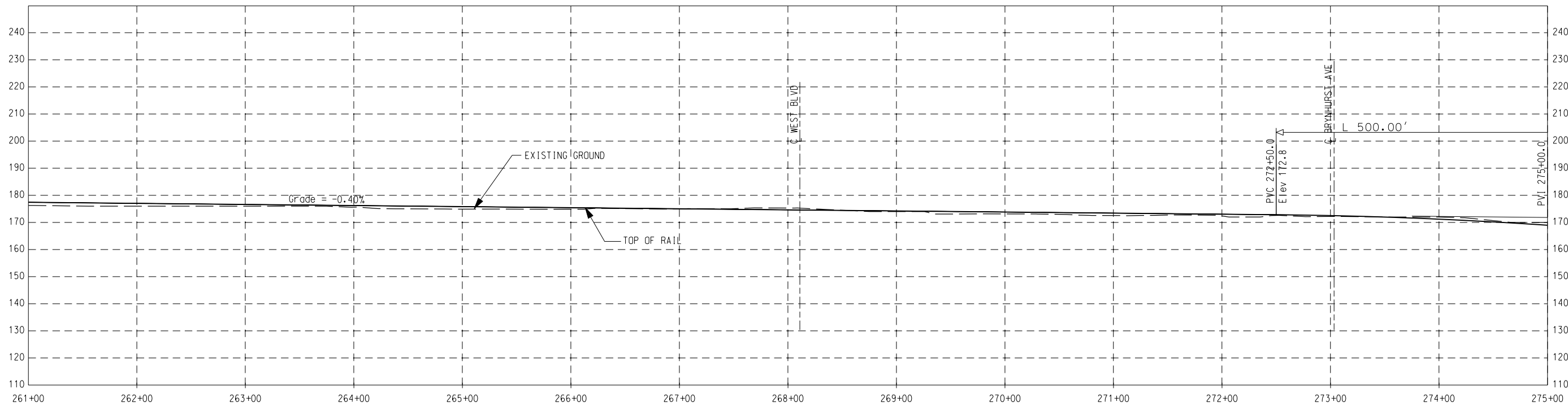
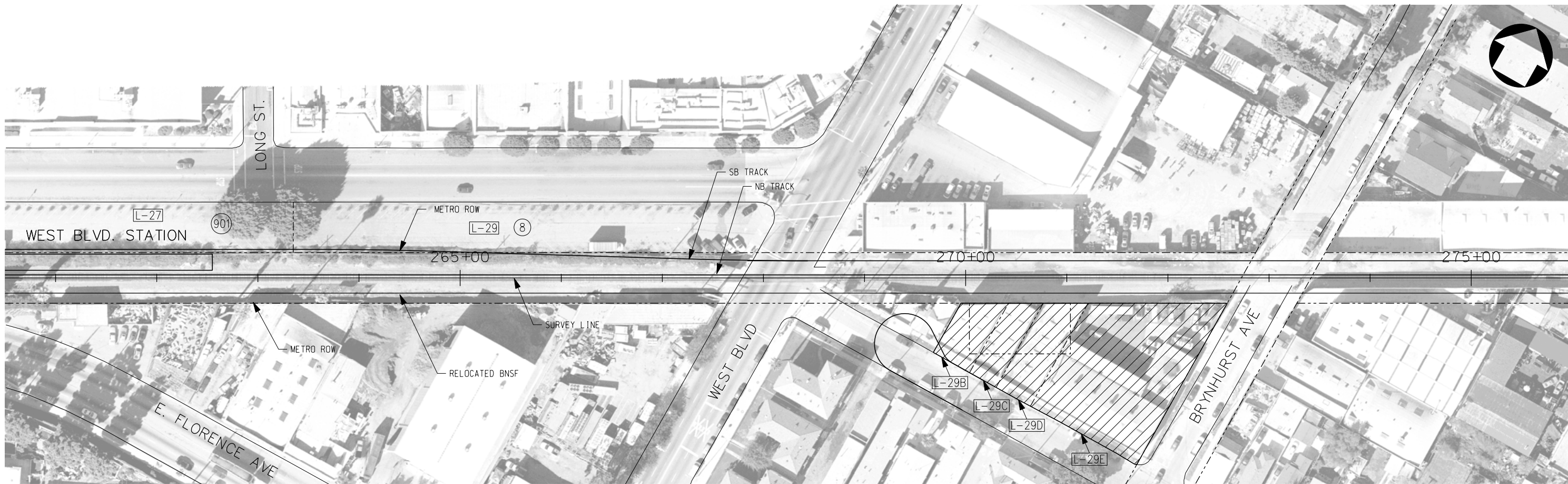
LIGHT RAIL TRANSIT
CENTINELA AVE C+C ALTERNATIVE
PLAN & PROFILE (3 OF 3)
STA 232+00 TO STA 246+00

CONTRACT NO
PS-4330-1968

DRAWING NO
C-618

SCALE
 HORIZ: 1" = 100'
 VERT: 1" = 40'

SHEET NO
0



THE PREPARATION OF THIS DRAWING HAS BEEN FINANCED IN PART THROUGH A GRANT FROM THE U.S. DEPARTMENT OF TRANSPORTATION, FEDERAL TRANSIT ADMINISTRATION (FTA), UNDER THE FEDERAL TRANSIT ACT OF 1964, AS AMENDED, AND IN PART BY THE TAXES OF THE CITIZENS OF LOS ANGELES COUNTY AND OF THE STATE OF CALIFORNIA.

REV	DATE	BY	APP	REG NO	EXPIRES	SEAL HOLDER	DESCRIPTION

DESIGNED BY	
DRAWN BY	
CHECKED BY	
IN CHARGE	
DATE	

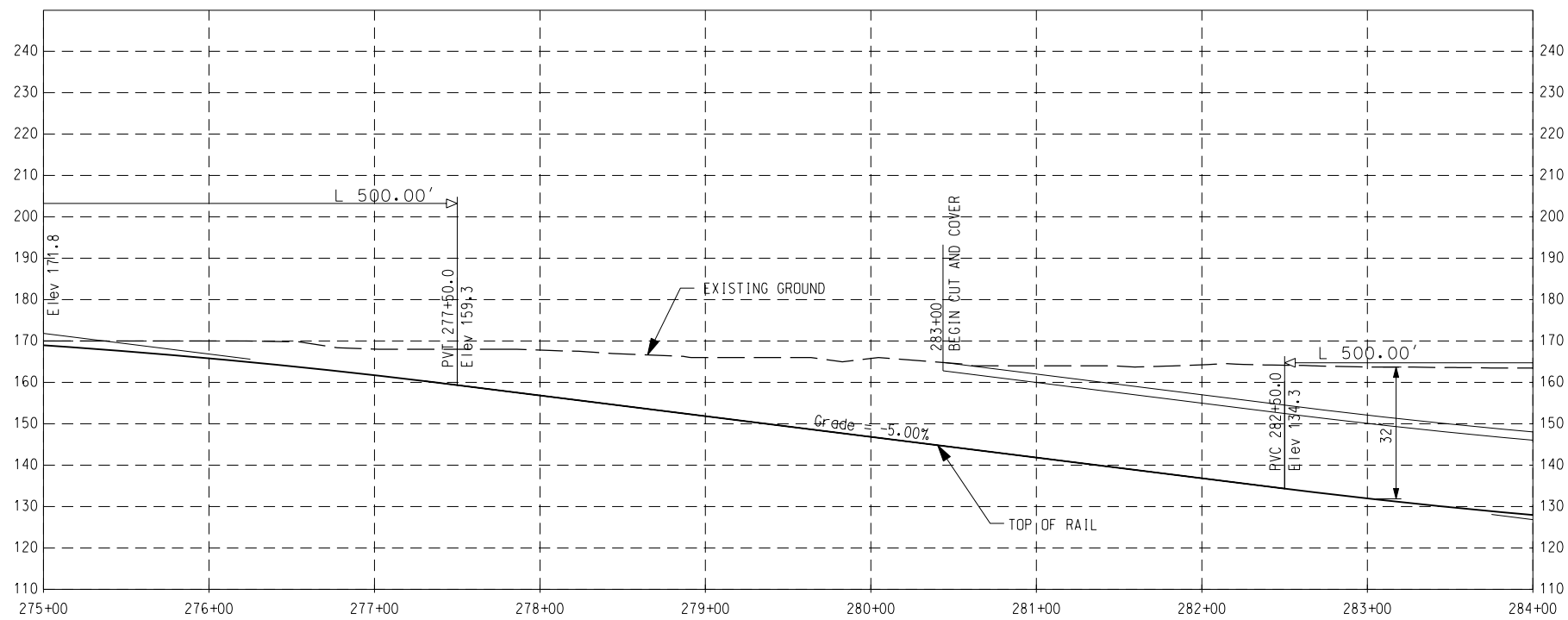
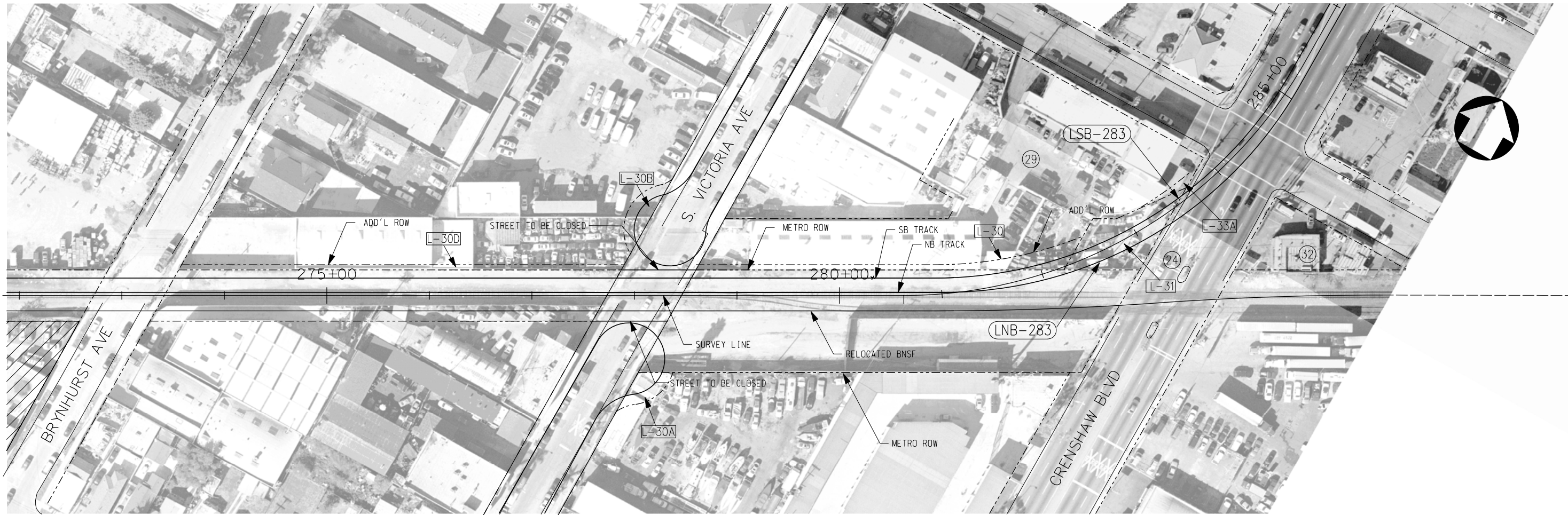
M Metro
LOS ANGELES COUNTY METROPOLITAN TRANSPORTATION AUTHORITY
Crenshaw Transit Corridor Project

PB Parsons Brinckerhoff
 In Association with
 Jenkins Gales Martinez, Inc.

PROJECT MANAGER

LIGHT RAIL TRANSIT
VICTORIA-60th STREET BELOW-GRADE
ALTERNATIVE
PLAN & PROFILE
STA 261+00 TO STA 275+00

CONTRACT NO	PS-4330-1968
DRAWING NO	C-620
SCALE	HORIZ: 1" = 100' VERT: 1" = 40'
SHEET NO	



THE PREPARATION OF THIS DRAWING HAS BEEN FINANCED IN PART THROUGH A GRANT FROM THE U.S. DEPARTMENT OF TRANSPORTATION, FEDERAL TRANSIT ADMINISTRATION (FTA), UNDER THE FEDERAL TRANSIT ACT OF 1964, AS AMENDED, AND IN PART BY THE TAXES OF THE CITIZENS OF LOS ANGELES COUNTY AND OF THE STATE OF CALIFORNIA.

REV	DATE	BY	APP	REG NO	EXPIRES	SEAL HOLDER	DESCRIPTION

DESIGNED BY	
DRAWN BY	
CHECKED BY	
IN CHARGE	
DATE	

M Metro
Los Angeles County Metropolitan Transportation Authority
Crenshaw Transit Corridor Project

PB Parsons Brinckerhoff
 In Association with
 Jenkins Gales Martinez, Inc.

PROJECT MANAGER

LIGHT RAIL TRANSIT
VICTORIA-60th STREET BELOW-GRADE
 ALTERNATIVE
 PLAN & PROFILE
 STA 275+00 TO STA 284+00

CONTRACT NO	PS-4330-1968
DRAWING NO	C-621
SCALE	HORIZ: 1" = 100' VERT: 1" = 40'
SHEET NO	0