

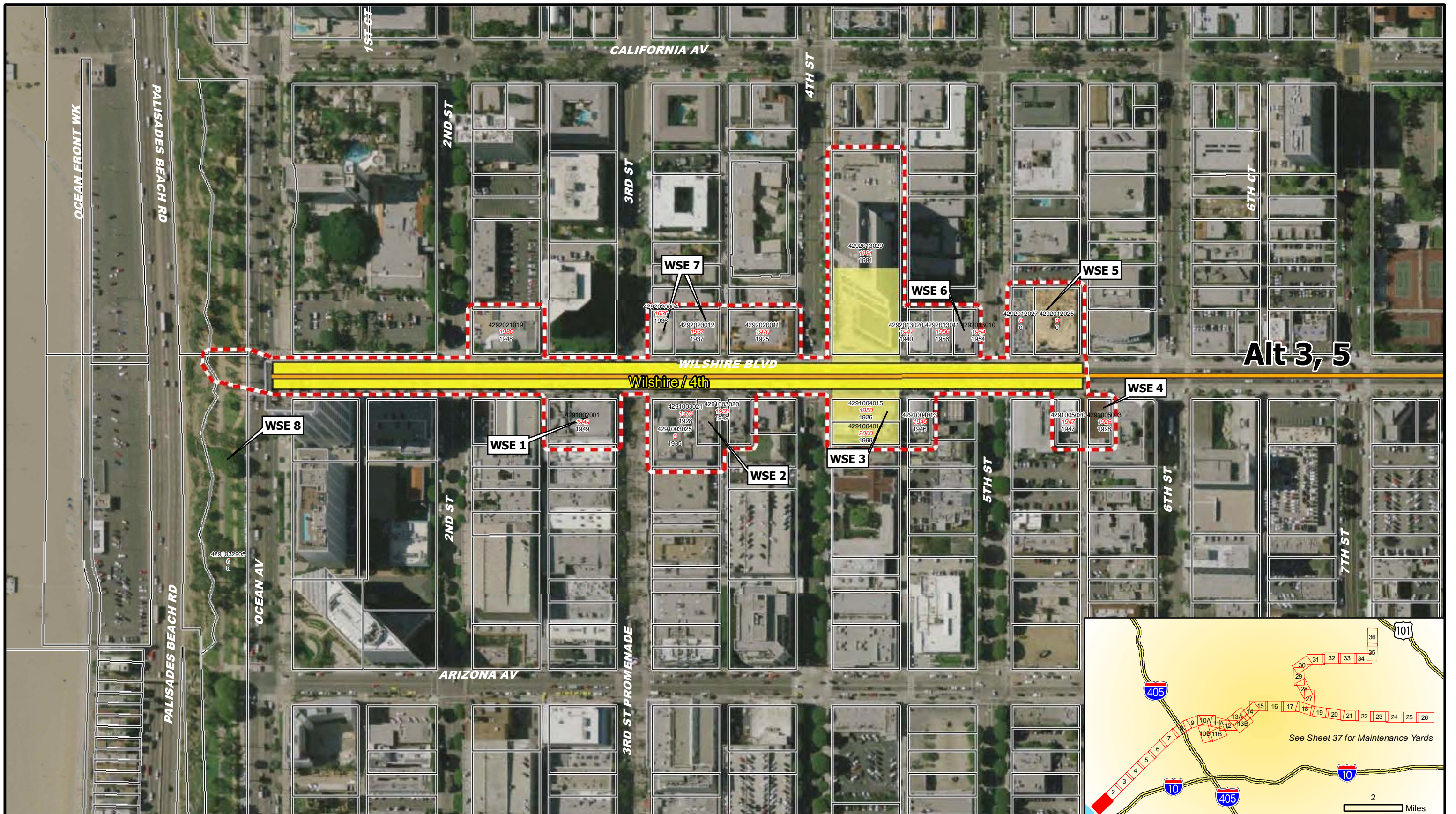


**WESTSIDE SUBWAY EXTENSION**

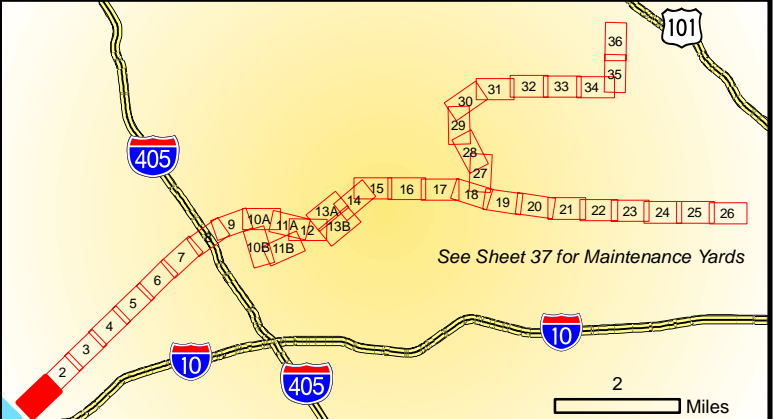
**Cultural Resources Technical Report Appendix E**



**August 2010**



Alt 3, 5

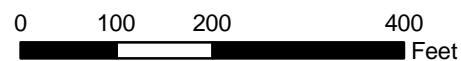


**Legend**

- Built Environment APE
- Properties Subject to Reconnaissance Survey Activities
- Contributors to Historic District

- Alignment Alternatives and Options**
- Stations
  - Alternative 1, 2, 3, 4, 5
  - Alternative 2, 3, 5
  - Alternative 3, 5
  - Alternative 4, 5
  - Options

- WSE ID** NRHP-, CRHR-, and/or locally eligible or listed properties; and/or Contributors to a Historic District
- AIN** Effective Year Built Year
- Parcels within APE
  - Project Improvements

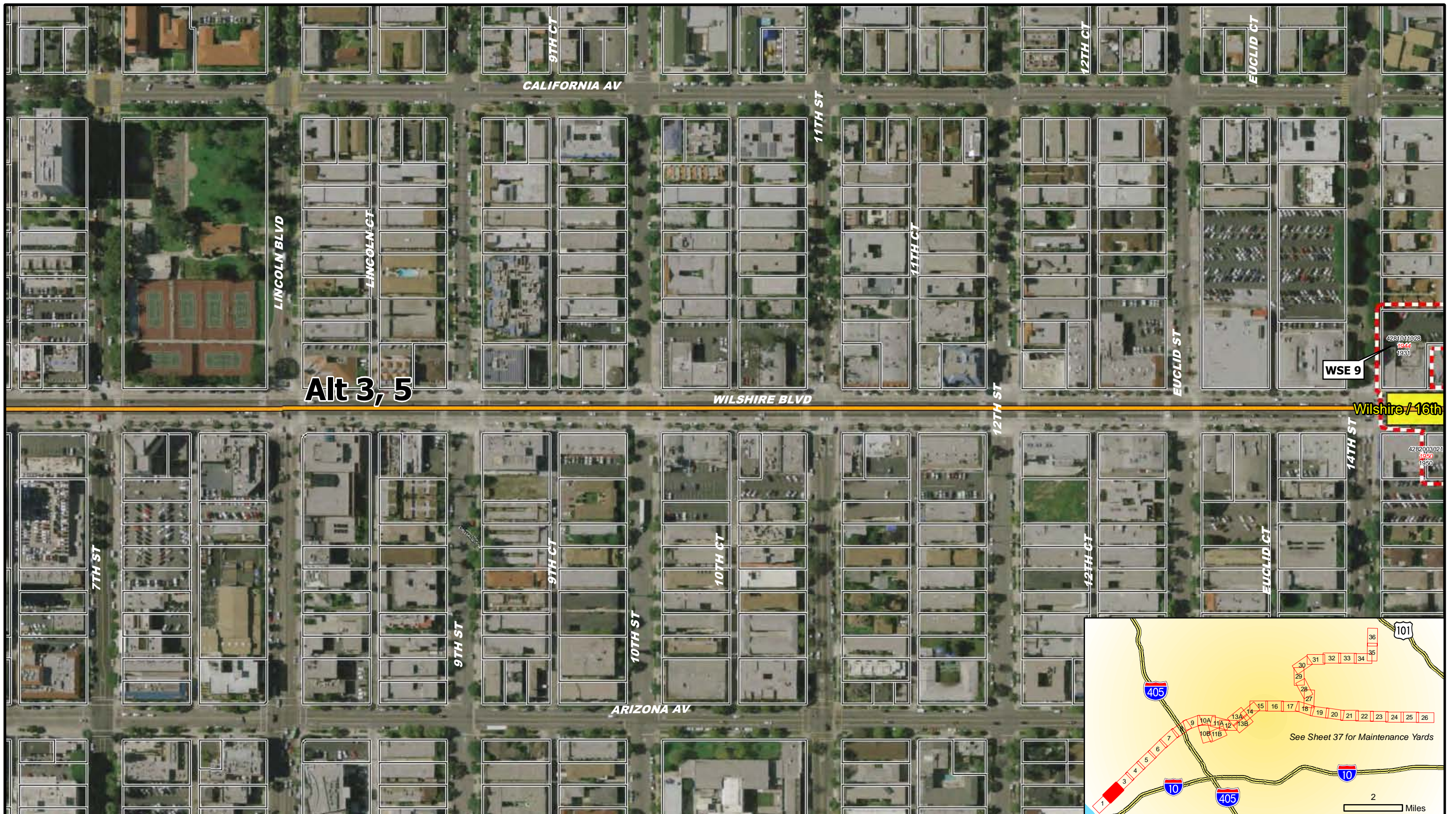


**WESTSIDE SUBWAY EXTENSION  
ARCHITECTURAL AND HISTORIC RESOURCES**




March 2010







Sheet 1 of 39

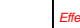
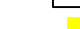


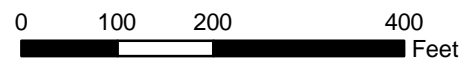


**Legend**

-  Built Environment APE
-  Properties Subject to Reconnaissance Survey Activities
-  Contributors to Historic District

- Alignment Alternatives and Options**
-  Stations
  -  Alternative 1, 2, 3, 4, 5
  -  Alternative 2, 3, 5
  -  Alternative 3, 5
  -  Alternative 4, 5
  -  Options

- WSE ID** NRHP-, CRHR-, and/or locally eligible or listed properties; and/or Contributors to a Historic District
- AIN** Effective Year Built Year
-  Parcels within APE
  -  Project Improvements

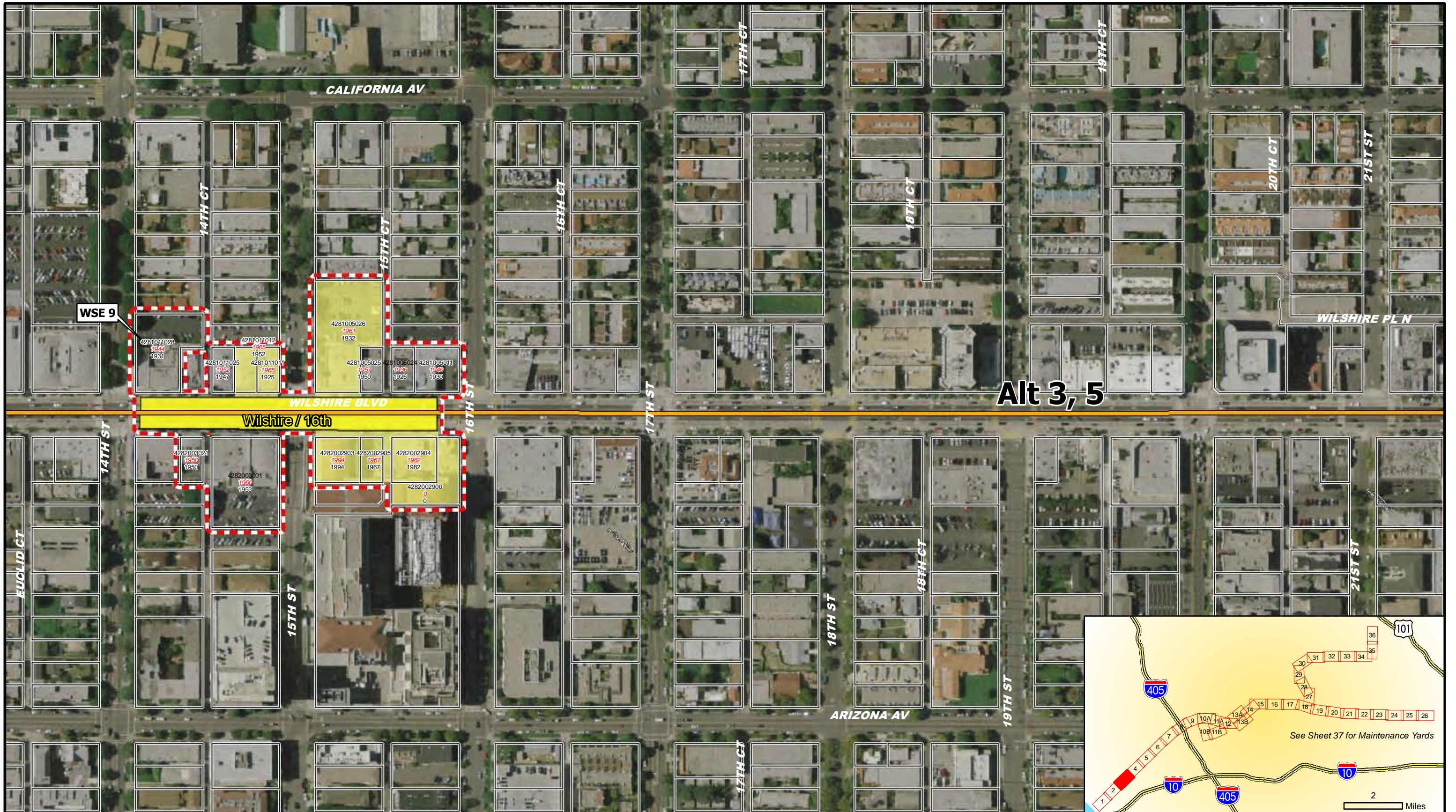


**WESTSIDE SUBWAY EXTENSION  
ARCHITECTURAL AND HISTORIC RESOURCES**

March 2010

Sheet 2 of 39





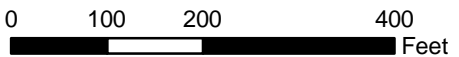
**Alt 3, 5**

**Legend**

- Built Environment APE
- Properties Subject to Reconnaissance Survey Activities
- Contributors to Historic District

- Stations**
- Stations
- Alignment Alternatives and Options**
- Alternative 1, 2, 3, 4, 5
  - Alternative 2, 3, 5
  - Alternative 3, 5
  - Alternative 4, 5
  - Options

- WSE ID** NRHP-, CRHR-, and/or locally eligible or listed properties; and/or Contributors to a Historic District
- AIN** Parcels within APE
- | Effective Year | Built Year |
|----------------|------------|
|                |            |
- Project Improvements**
- Project Improvements

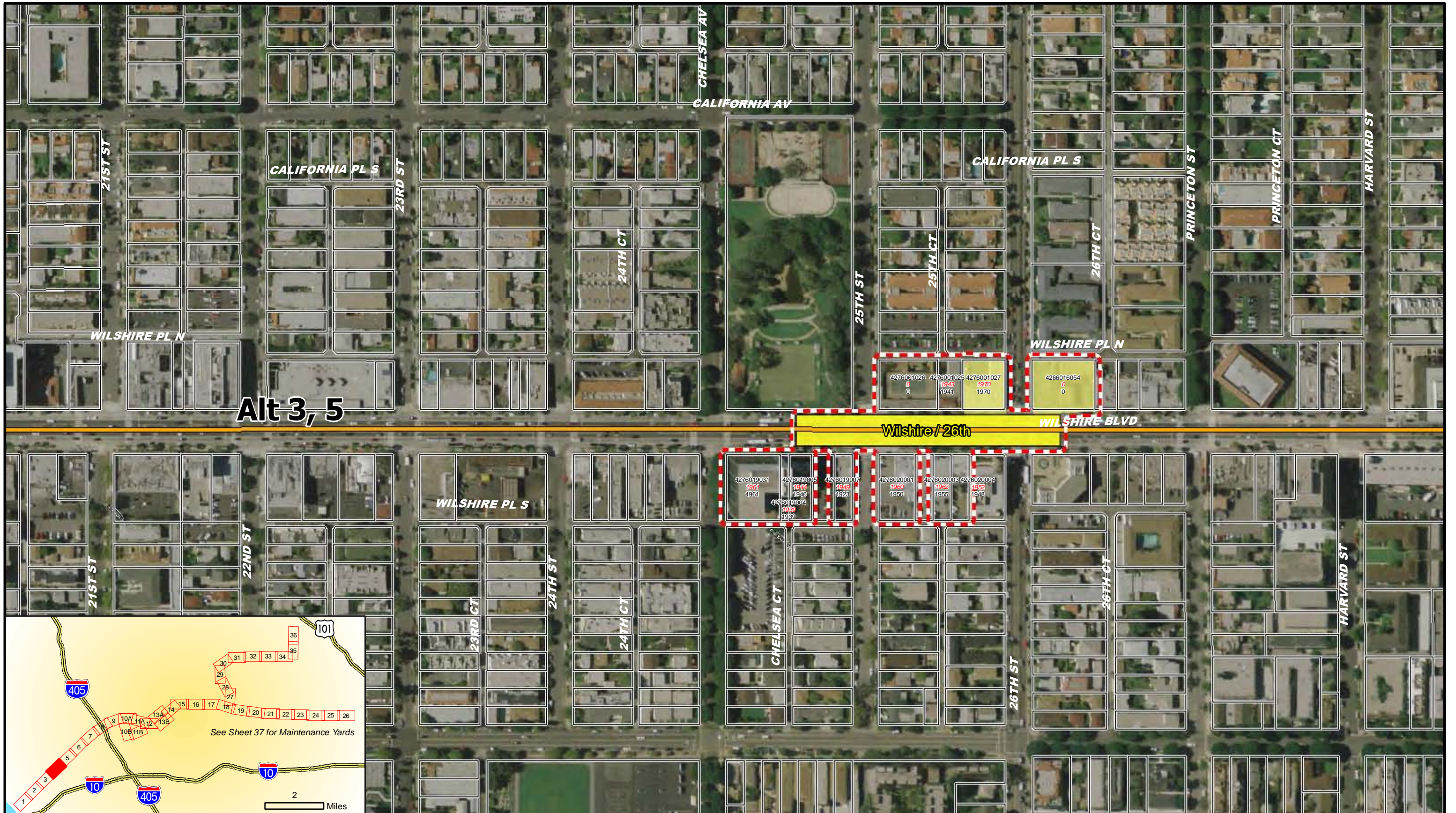


**WESTSIDE SUBWAY EXTENSION  
ARCHITECTURAL AND HISTORIC RESOURCES**

March 2010

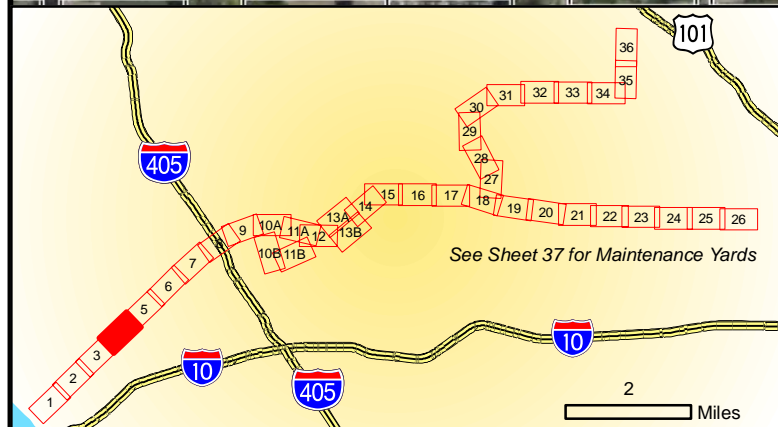
Sheet 3 of 39





**Alt 3, 5**

**Wilshire / 26th**

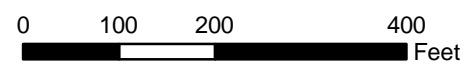


**Legend**

- Built Environment APE
- Properties Subject to Reconnaissance Survey Activities
- Contributors to Historic District

- Alignment Alternatives and Options**
- Stations
  - Alternative 1, 2, 3, 4, 5
  - Alternative 2, 3, 5
  - Alternative 3, 5
  - Alternative 4, 5
  - Options

- WSE ID** NRHP-, CRHR-, and/or locally eligible or listed properties; and/or Contributors to a Historic District
- AIN** Effective Year  
Built Year
- Parcels within APE
  - Project Improvements

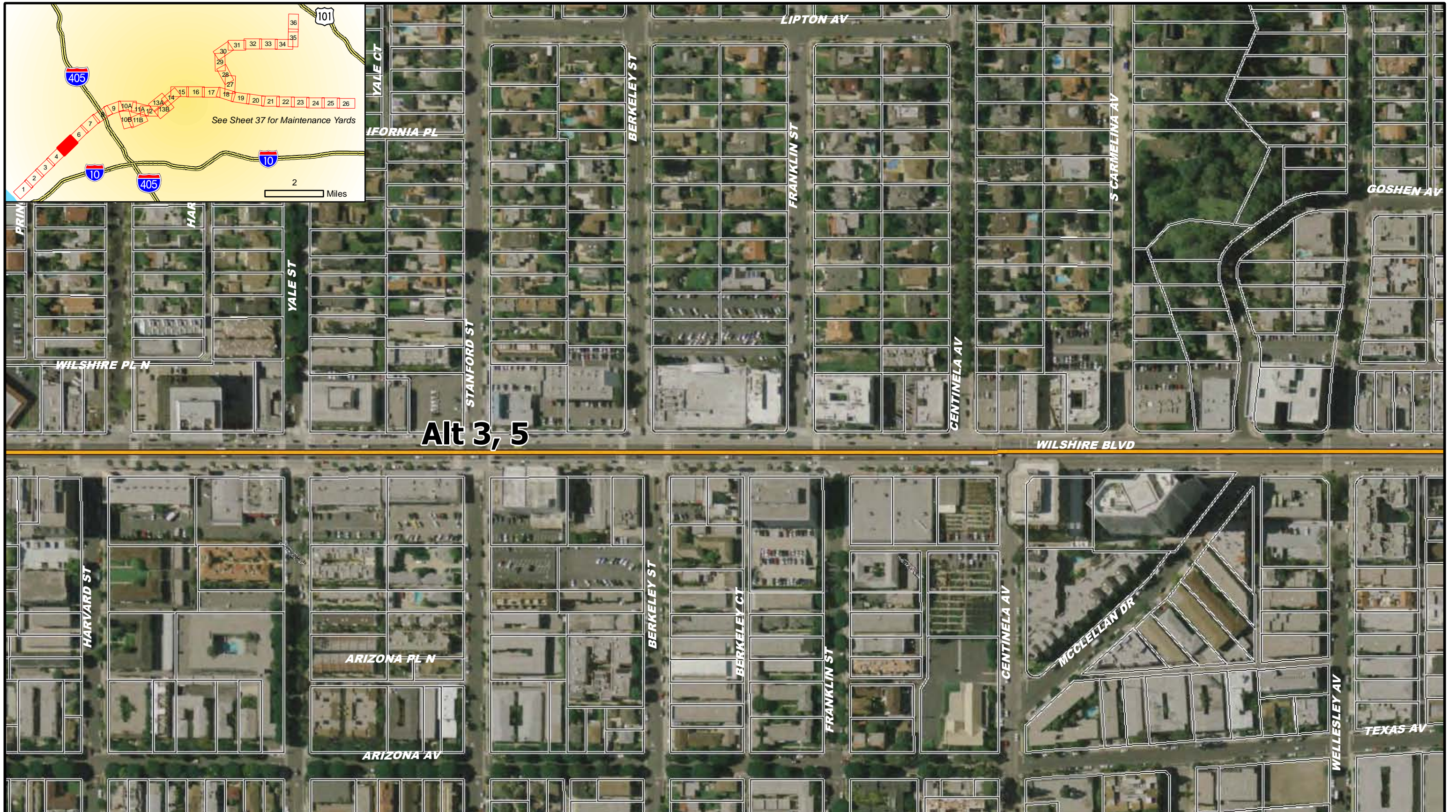


**WESTSIDE SUBWAY EXTENSION  
ARCHITECTURAL AND HISTORIC RESOURCES**

March 2010




Sheet 4 of 39













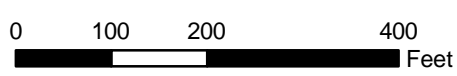
**Alt 3, 5**

**Legend**

-  Built Environment APE
-  Properties Subject to Reconnaissance Survey Activities
-  Contributors to Historic District

- Alignment Alternatives and Options**
-  Stations
  -  Alternative 1, 2, 3, 4, 5
  -  Alternative 2, 3, 5
  -  Alternative 3, 5
  -  Alternative 4, 5
  -  Options

- WSE ID** NRHP-, CRHR-, and/or locally eligible or listed properties; and/or Contributors to a Historic District
- AIN** Effective Year  
Built Year
-  Parcels within APE
  -  Project Improvements

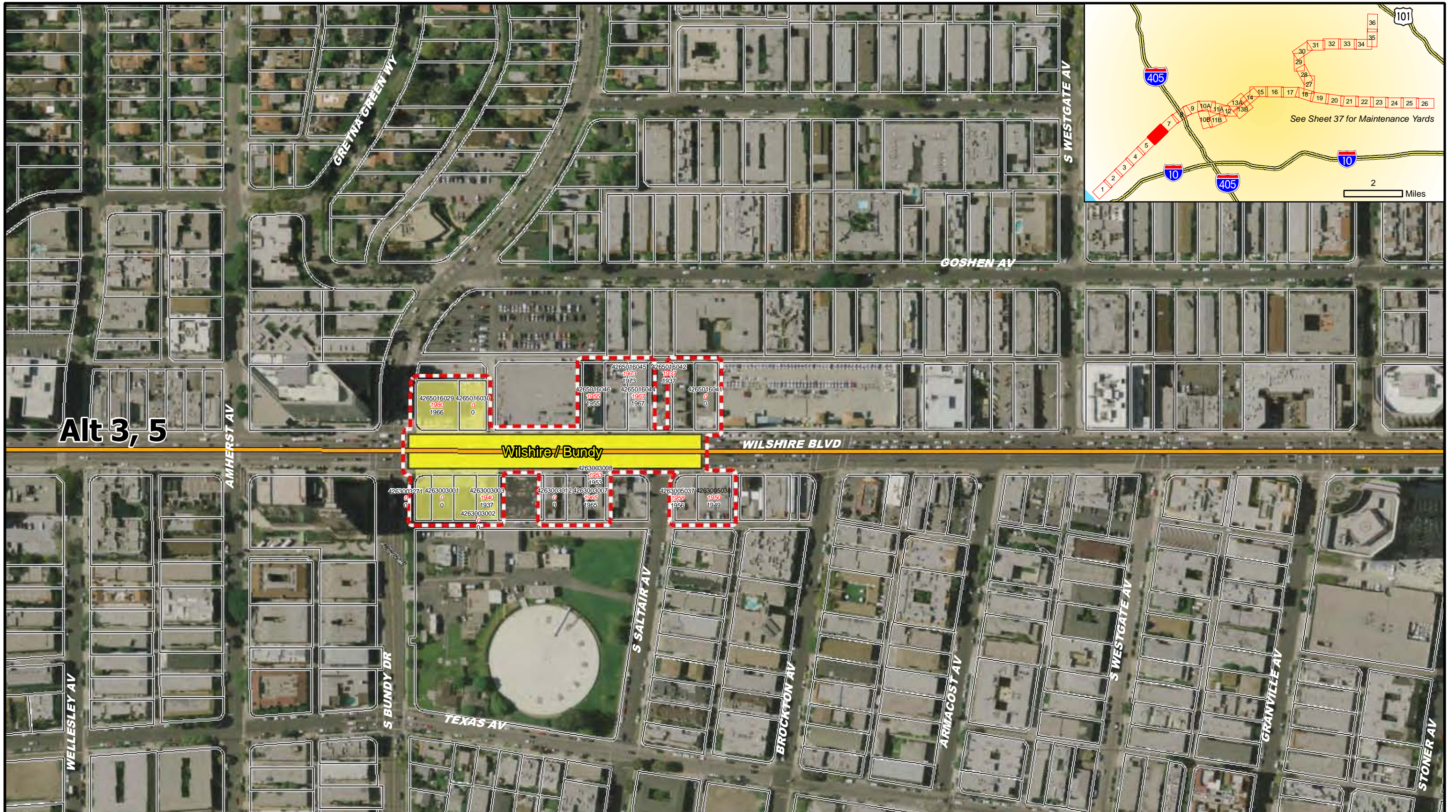


**WESTSIDE SUBWAY EXTENSION  
ARCHITECTURAL AND HISTORIC RESOURCES**

March 2010

Sheet 5 of 39





Alt 3, 5

Wishire/Bundy

WILSHIRE BLVD

TEXAS AV

S SALT AIR AV

BROCKTON AV

ARMAGOST AV

S WESTGATE AV

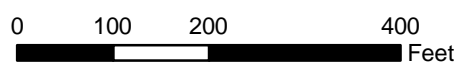
GRANVILLE AV

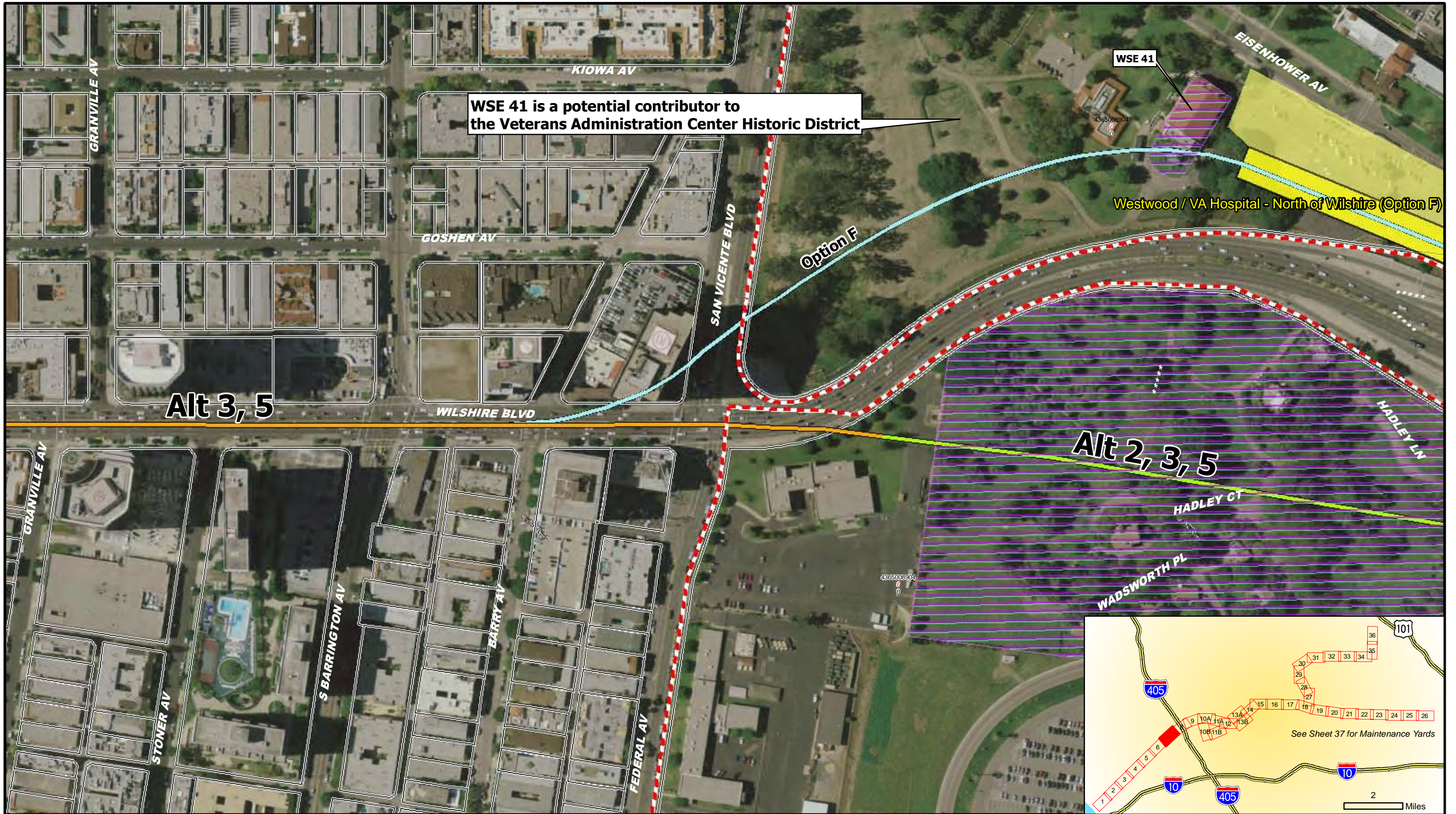
STONER AV

- Legend**
- Built Environment APE
  - Properties Subject to Reconnaissance Survey Activities
  - Contributors to Historic District

- Alignment Alternatives and Options**
- Stations
  - Alternative 1, 2, 3, 4, 5
  - Alternative 2, 3, 5
  - Alternative 3, 5
  - Alternative 4, 5
  - Options

- WSE ID** NRHP-, CRHR-, and/or locally eligible or listed properties; and/or Contributors to a Historic District
- AIN**  
Effective Year  
Built Year
- Parcels within APE
  - Project Improvements





**WSE 41 is a potential contributor to the Veterans Administration Center Historic District**

**WSE 41**

**Westwood / VA Hospital - North of Wilshire (Option F)**

**Alt 3, 5**

**Alt 2, 3, 5**

- Legend**
- Built Environment APE
  - Properties Subject to Reconnaissance Survey Activities
  - Contributors to Historic District

- Alignment Alternatives and Options**
- Alternative 1, 2, 3, 4, 5
  - Alternative 2, 3, 5
  - Alternative 3, 5
  - Alternative 4, 5
  - Options

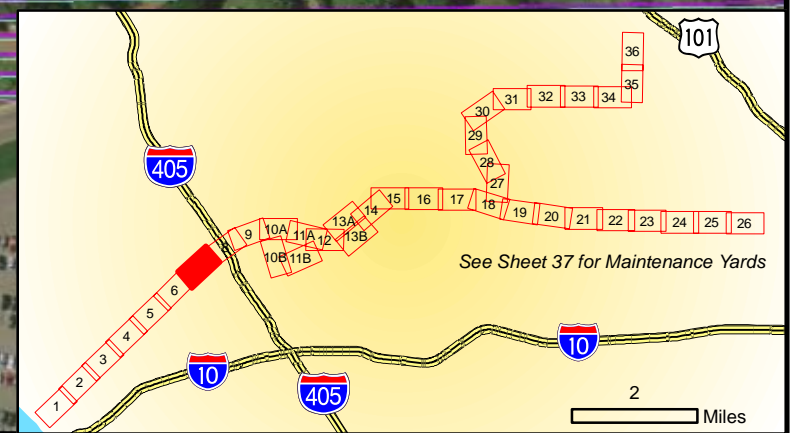
- WSE ID** NRHP-, CRHR-, and/or locally eligible or listed properties; and/or Contributors to a Historic District
- AIN** Effective Year Built Year
- Parcels within APE
  - Project Improvements



**WESTSIDE SUBWAY EXTENSION ARCHITECTURAL AND HISTORIC RESOURCES**

March 2010

Sheet 7 of 39

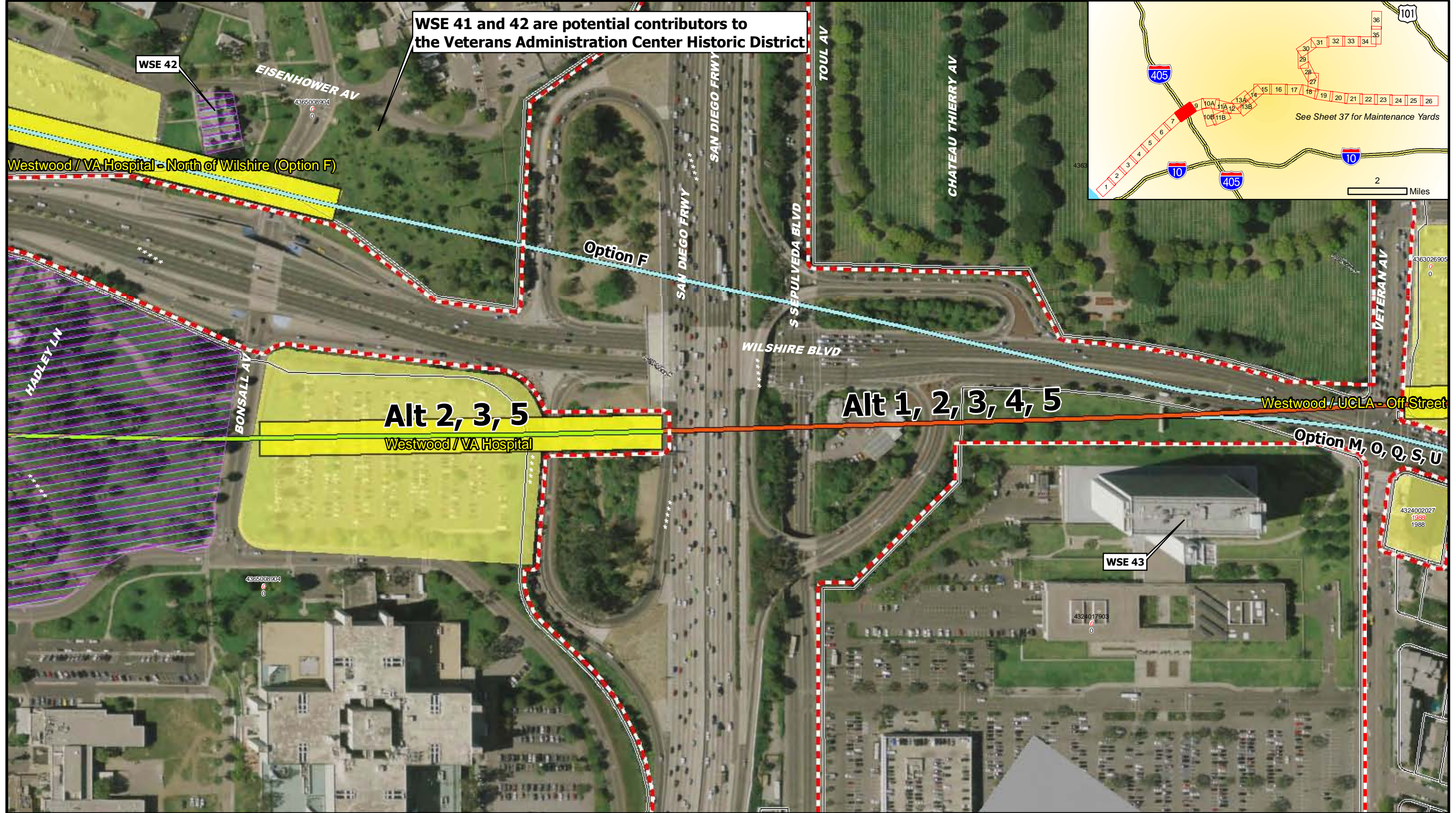
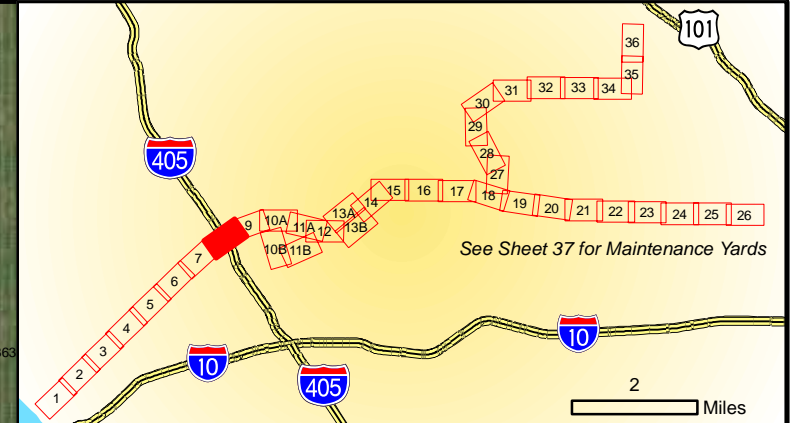




WSE 41 and 42 are potential contributors to the Veterans Administration Center Historic District

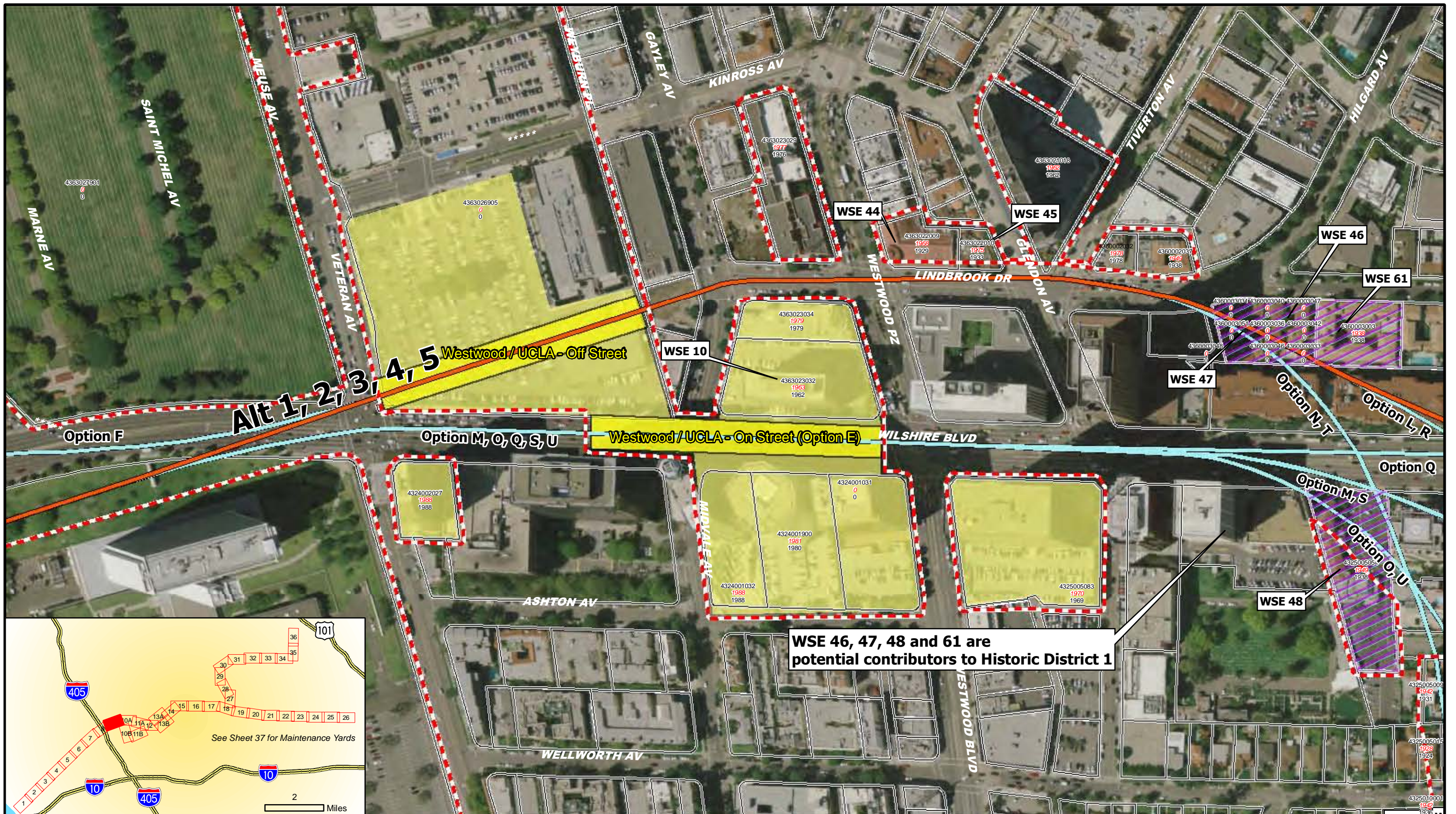
WSE 42

Westwood / VA Hospital - North of Wilshire (Option F)



WSE 43

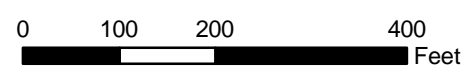
<b>Legend</b> Built Environment APE Properties Subject to Reconnaissance Survey Activities Contributors to Historic District		<b>Alignment Alternatives and Options</b> Station Alternative 1, 2, 3, 4, 5 Alternative 2, 3, 5 Alternative 3, 5 Alternative 4, 5 Options		<b>WSE ID</b> NRHP-, CRHR-, and/or locally eligible or listed properties; and/or Contributors to a Historic District Parcels within APE Project Improvements		<b>WESTSIDE SUBWAY EXTENSION ARCHITECTURAL AND HISTORIC RESOURCES</b>  	
AIN Effective Year Built Year		AIN Effective Year Built Year		March 2010		Sheet 8 of 39	



- Legend**
- Built Environment APE
  - Properties Subject to Reconnaissance Survey Activities
  - Contributors to Historic District

- Alignment Alternatives and Options**
- Alternative 1, 2, 3, 4, 5
  - Alternative 2, 3, 5
  - Alternative 3, 5
  - Alternative 4, 5
  - Options

- WSE ID** NRHP-, CRHR-, and/or locally eligible or listed properties; and/or Contributors to a Historic District
- AIN** Effective Year Built Year
- Parcels within APE
  - Project Improvements



**WESTSIDE SUBWAY EXTENSION  
ARCHITECTURAL AND HISTORIC RESOURCES**

March 2010

Sheet 9 of 39

