

- Legend**
- Built Environment APE
  - Properties Subject to Reconnaissance Survey Activities
  - Contributors to Historic District

- Alignment Alternatives and Options**
- Alternative 1, 2, 3, 4, 5
  - Alternative 2, 3, 5
  - Alternative 3, 5
  - Alternative 4, 5
  - Options

- WSE ID**
- NRHP-, CRHR-, and/or locally eligible or listed properties; and/or Contributors to a Historic District
  - Parcels within APE
  - Project Improvements
- AIN**  
Effective Year  
Built Year

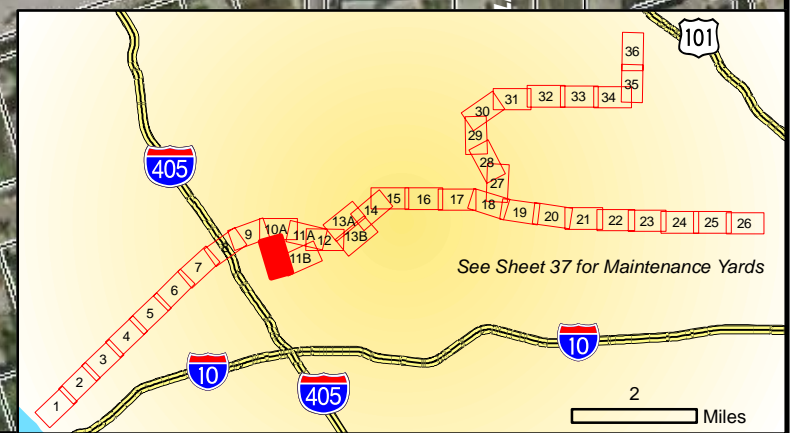
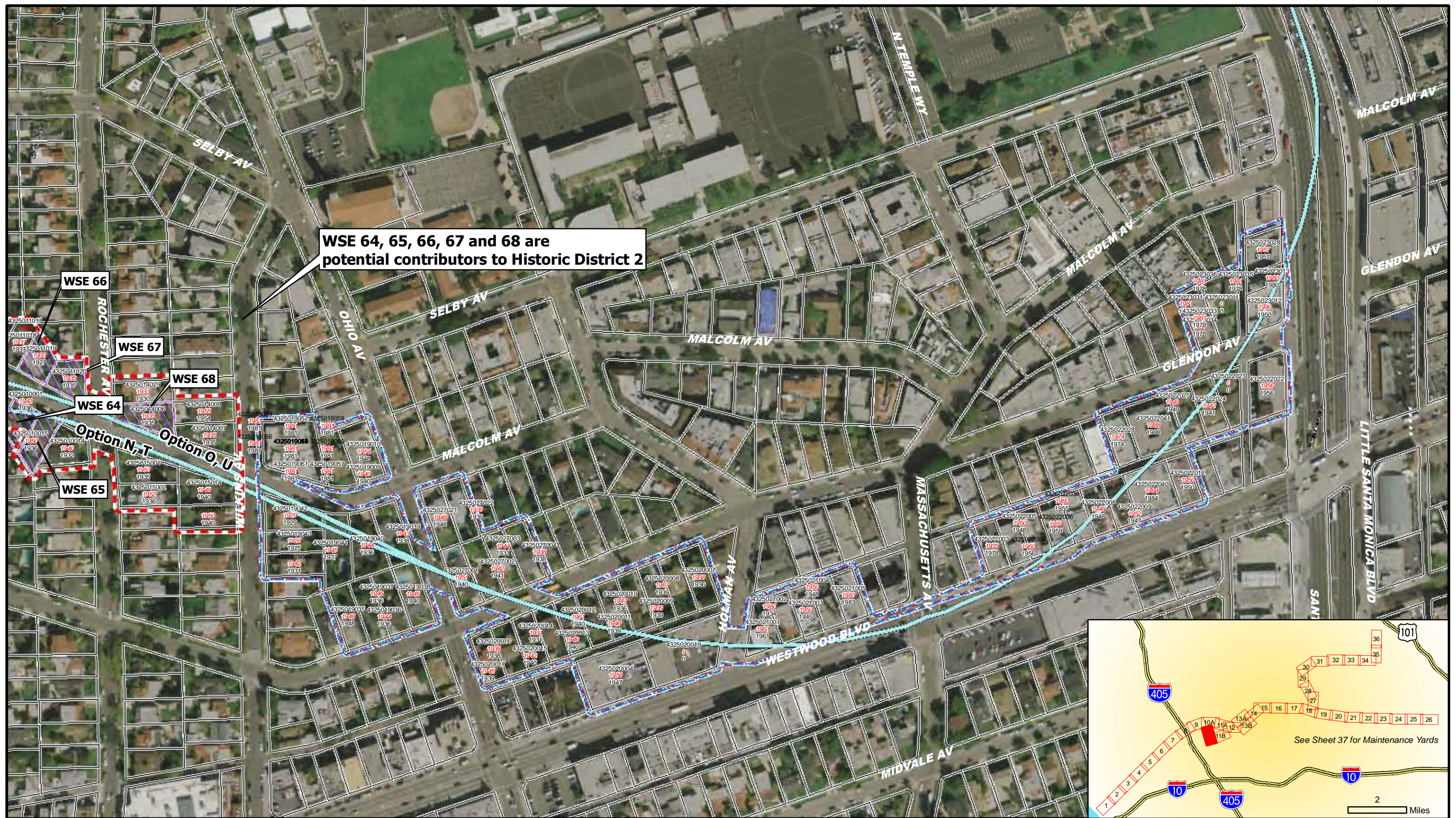


**WESTSIDE SUBWAY EXTENSION  
ARCHITECTURAL AND HISTORIC RESOURCES**

March 2010	Sheet 10A of 39	
------------	-----------------	--



**WSE 64, 65, 66, 67 and 68 are potential contributors to Historic District 2**



**Legend**

- Build Environment APE
- Properties Subject to Reconnaissance Survey Activities
- Contributors to Historic District
- Stations
- Alignment Alternatives and Options
  - Alternative 1, 2, 3, 4, 5
  - Alternative 2, 3, 5
  - Alternative 3, 5
  - Alternative 4, 5
  - Options
- WSE ID
- AIN Effective Year
- AIN Build Year
- Parcels within APE
- Project Improvements

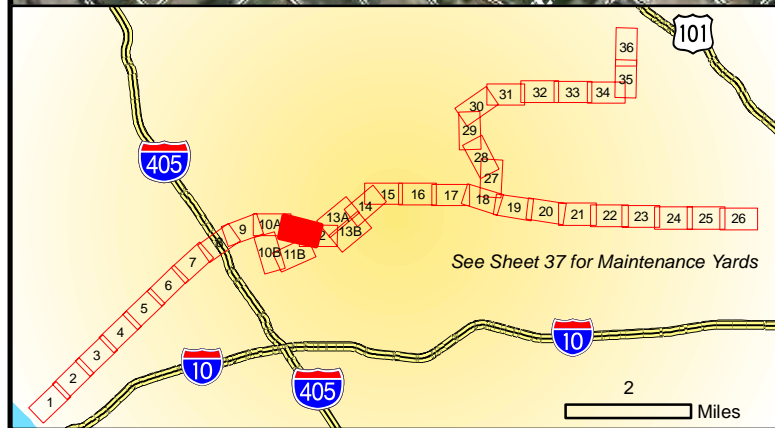
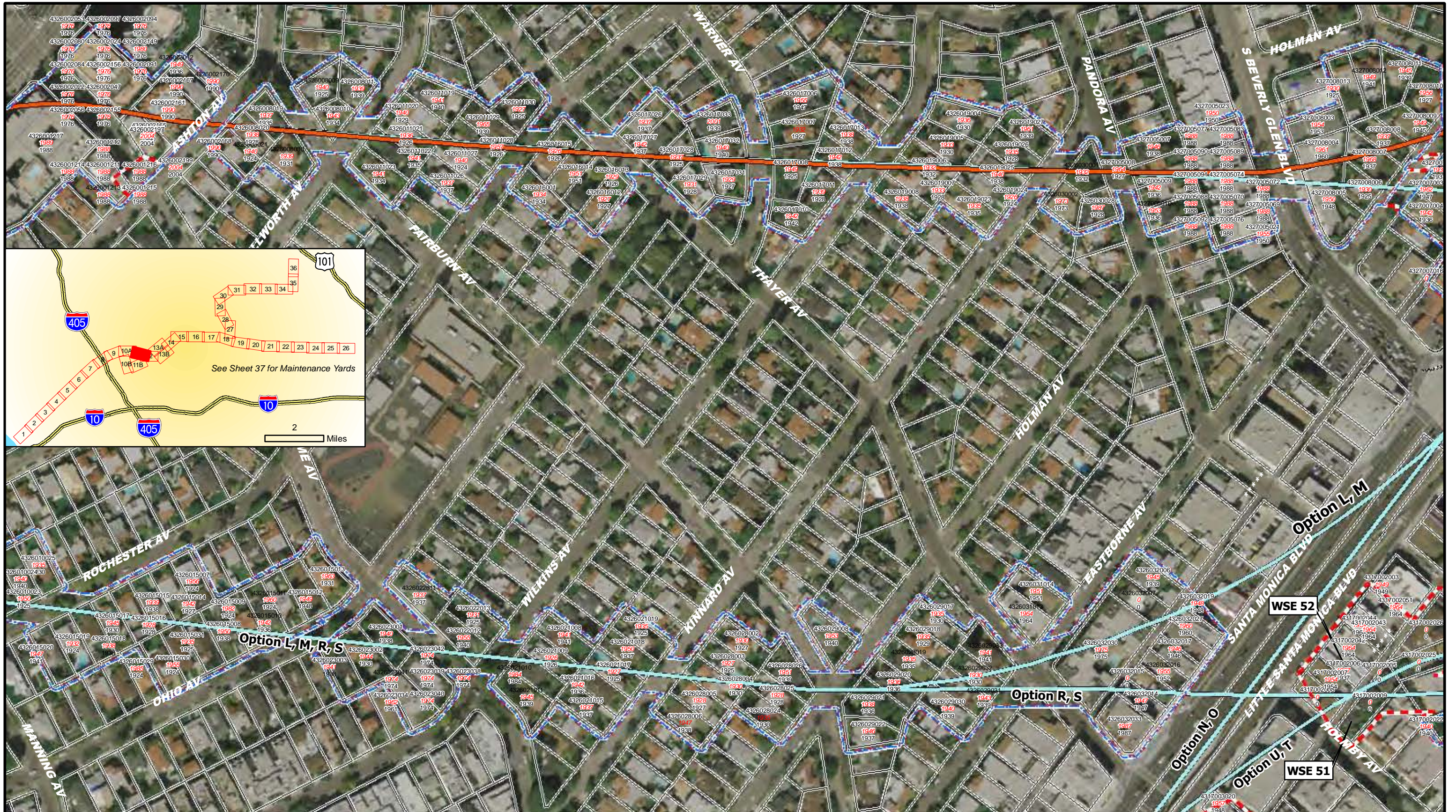
0 100 200 400 Feet

**WESTSIDE SUBWAY EXTENSION  
ARCHITECTURAL AND HISTORIC RESOURCES**

March 2010

Sheet 10B of 39

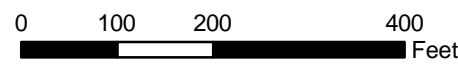




- Legend**
- Built Environment APE
  - Properties Subject to Reconnaissance Survey Activities
  - Contributors to Historic District

- Alignment Alternatives and Options**
- Alternative 1, 2, 3, 4, 5
  - Alternative 2, 3, 5
  - Alternative 3, 5
  - Alternative 4, 5
  - Options

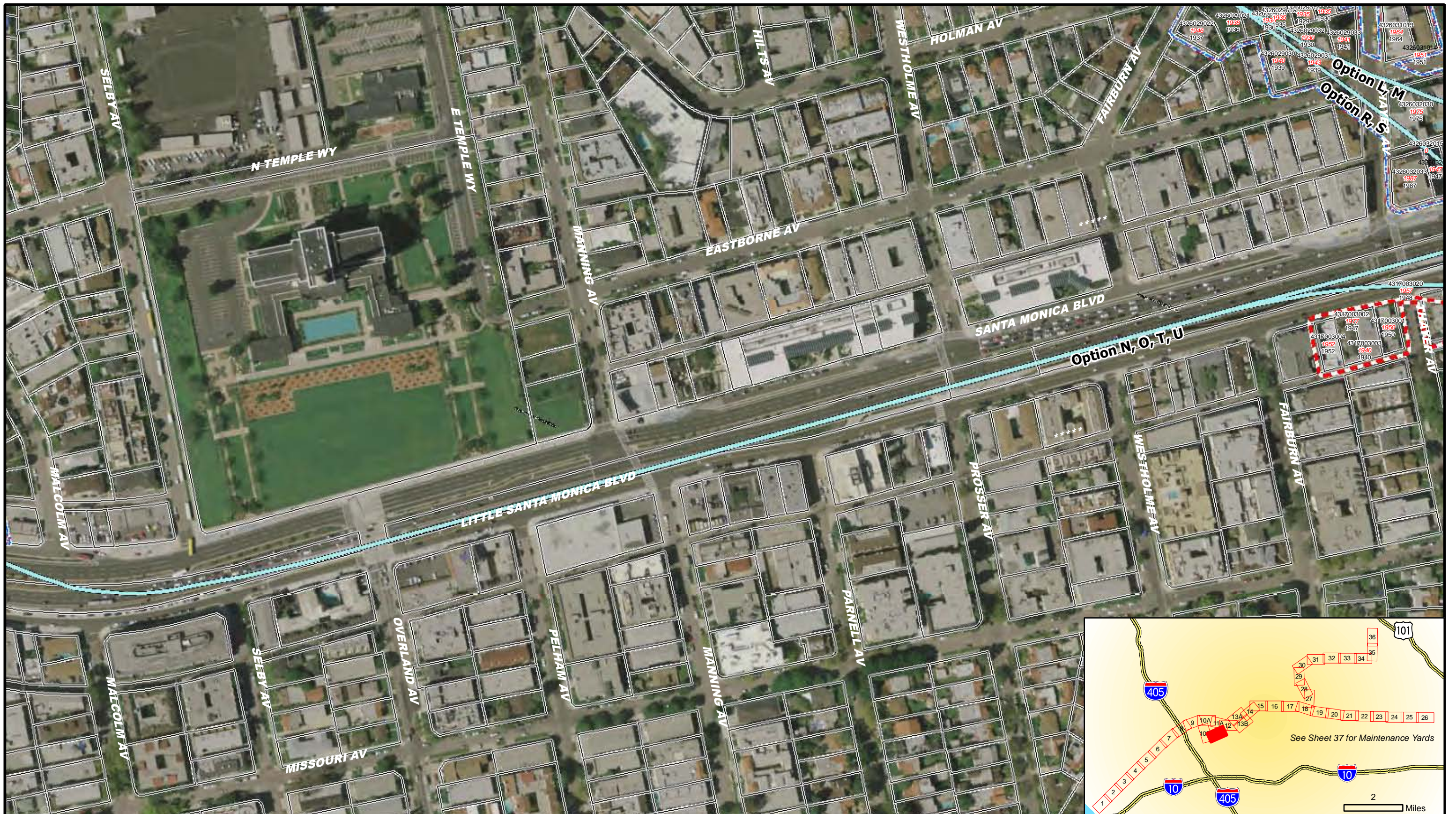
- WSE ID**
- NRHP-, CRHR-, and/or locally eligible or listed properties; and/or Contributors to a Historic District
  - Parcels within APE
  - Project Improvements
- AIN**  
Effective Year  
Built Year






**WESTSIDE SUBWAY EXTENSION  
ARCHITECTURAL AND HISTORIC RESOURCES**







March 2010	Sheet 11A of 39	
------------	-----------------	--

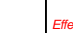



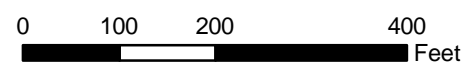


**Legend**

-  Built Environment APE
-  Properties Subject to Reconnaissance Survey Activities
-  Contributors to Historic District

- Alignment Alternatives and Options**
-  Stations
  -  Alternative 1, 2, 3, 4, 5
  -  Alternative 2, 3, 5
  -  Alternative 3, 5
  -  Alternative 4, 5
  -  Options

- WSE ID** NRHP-, CRHR-, and/or locally eligible or listed properties; and/or Contributors to a Historic District
- AIN** Effective Year Built Year
-  Parcels within APE
  -  Project Improvements



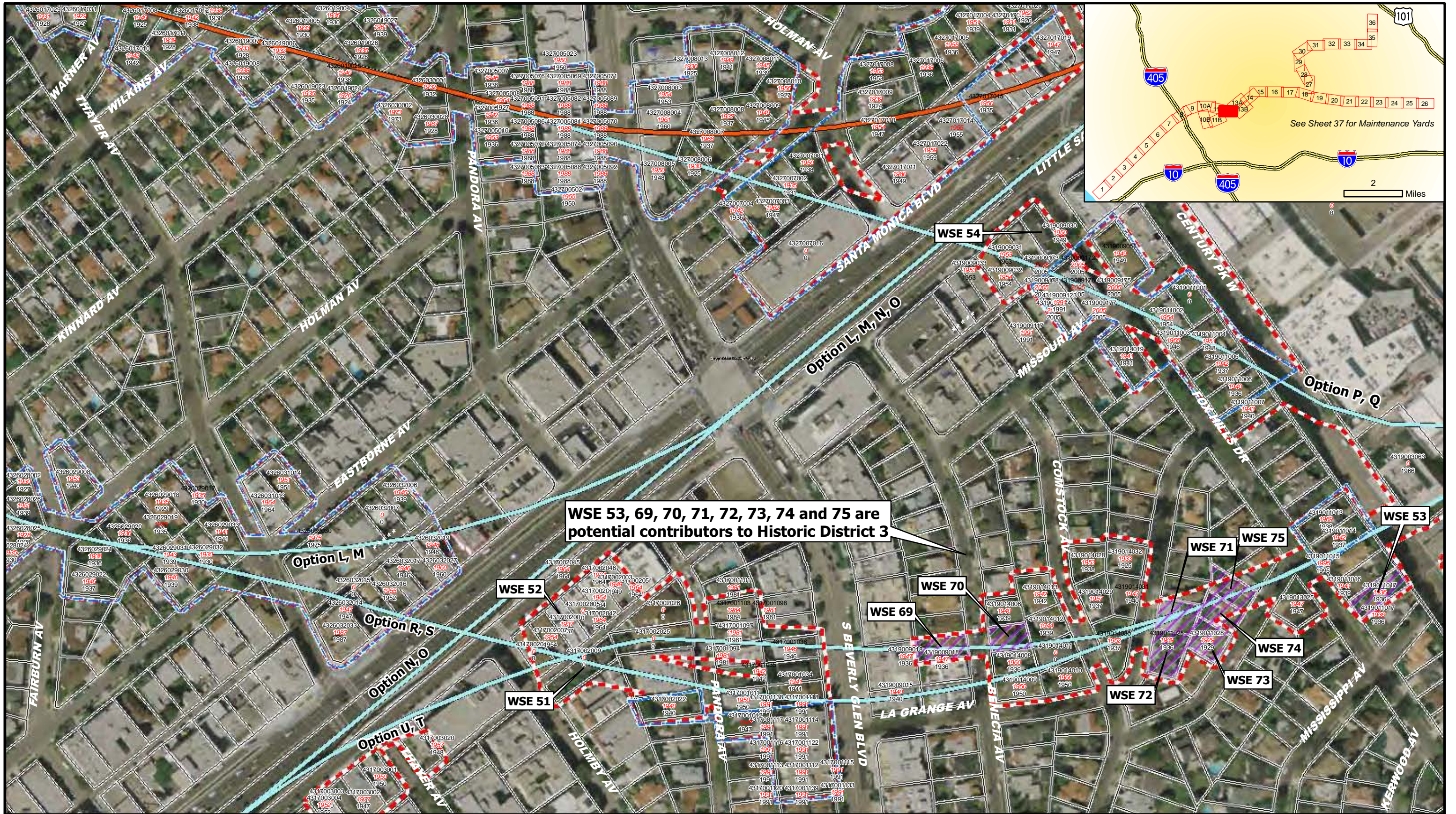
**WESTSIDE SUBWAY EXTENSION  
ARCHITECTURAL AND HISTORIC RESOURCES**

March 2010

Sheet 11B of 39





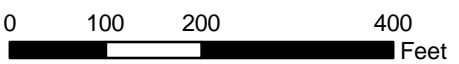


**WSE 53, 69, 70, 71, 72, 73, 74 and 75 are potential contributors to Historic District 3**

- Legend**
- Built Environment APE
  - Properties Subject to Reconnaissance Survey Activities
  - Contributors to Historic District

- Alignment Alternatives and Options**
- Stations
  - Alternative 1, 2, 3, 4, 5
  - Alternative 2, 3, 5
  - Alternative 3, 5
  - Alternative 4, 5
  - Options

- WSE ID**
- NRHP-, CRHR-, and/or locally eligible or listed properties; and/or Contributors to a Historic District
  - Parcels within APE
  - Project Improvements
- AIN**
- Effective Year
  - Built Year



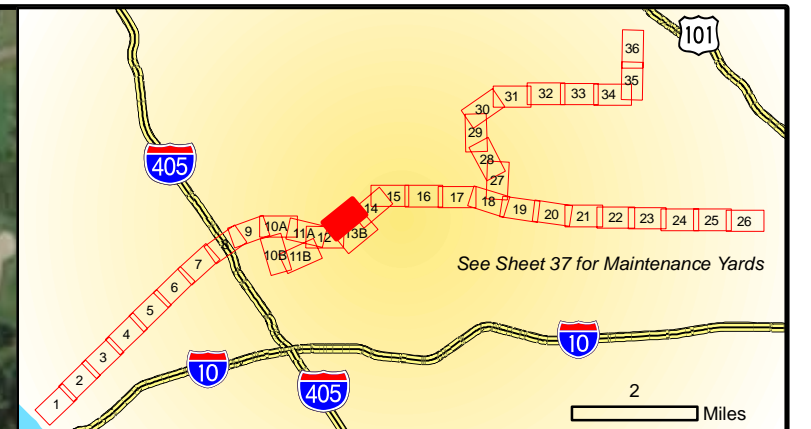
**WESTSIDE SUBWAY EXTENSION**

March 2010

Sheet 12 of 39



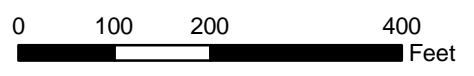




- Legend**
- Built Environment APE
  - Properties Subject to Reconnaissance Survey Activities
  - Contributors to Historic District

- Alignment Alternatives and Options**
- Stations
  - Alternative 1, 2, 3, 4, 5
  - Alternative 2, 3, 5
  - Alternative 3, 5
  - Alternative 4, 5
  - Options

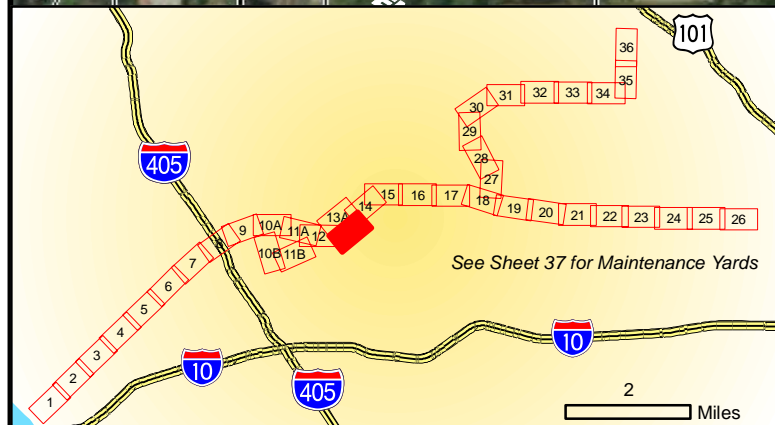
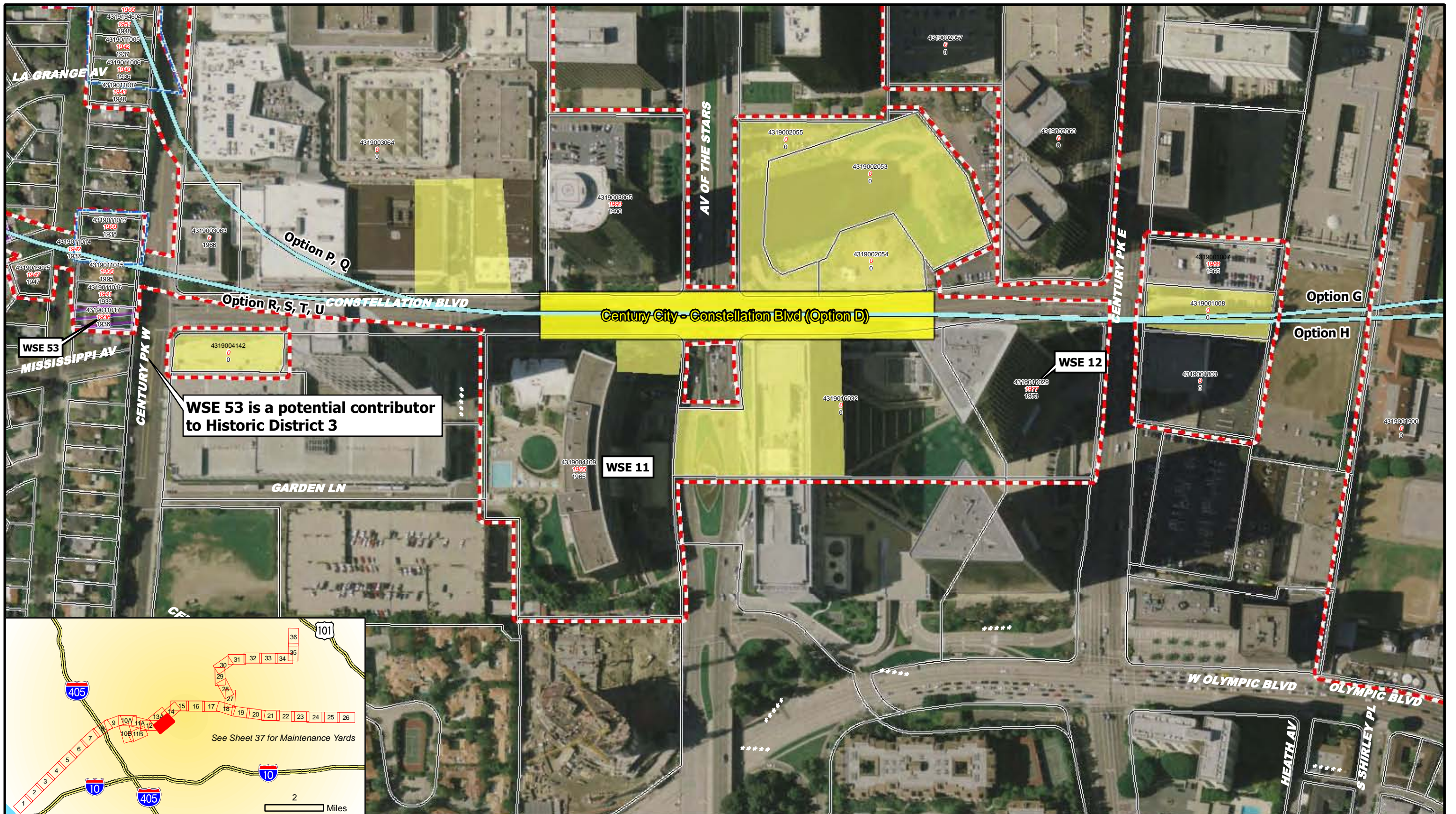
- WSE ID** NRHP-, CRHR-, and/or locally eligible or listed properties; and/or Contributors to a Historic District
- AIN** Parcels within APE
- Effective Year** Built Year
- Project Improvements



**WESTSIDE SUBWAY EXTENSION  
ARCHITECTURAL AND HISTORIC RESOURCES**

March 2010	Sheet 13A of 39	
------------	-----------------	--



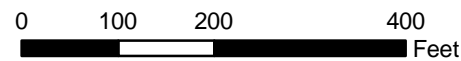


**Legend**

- Built Environment APE
- Properties Subject to Reconnaissance Survey Activities
- Contributors to Historic District

- Alignment Alternatives and Options**
- Stations
  - Alternative 1, 2, 3, 4, 5
  - Alternative 2, 3, 5
  - Alternative 3, 5
  - Alternative 4, 5
  - Options

- WSE ID** NRHP-, CRHR-, and/or locally eligible or listed properties; and/or Contributors to a Historic District
- AIN** Parcels within APE
- Effective Year**
- Built Year**
- Project Improvements



**WESTSIDE SUBWAY EXTENSION  
ARCHITECTURAL AND HISTORIC RESOURCES**

March 2010

Sheet 13B of 39

