

Legend

- Built Environment APE
- Stations
- Properties Subject to Reconnaissance Survey Activities
- Contributors to Historic District
- Alternative 1, 2, 3, 4, 5
- Alternative 2, 3, 5
- Alternative 3, 5
- Alternative 4, 5
- Options

WSE ID NRHP-, CRHR-, and/or locally eligible or listed properties; and/or Contributors to a Historic District

AIN
Effective Year
Built Year

Parcels within APE

Project Improvements

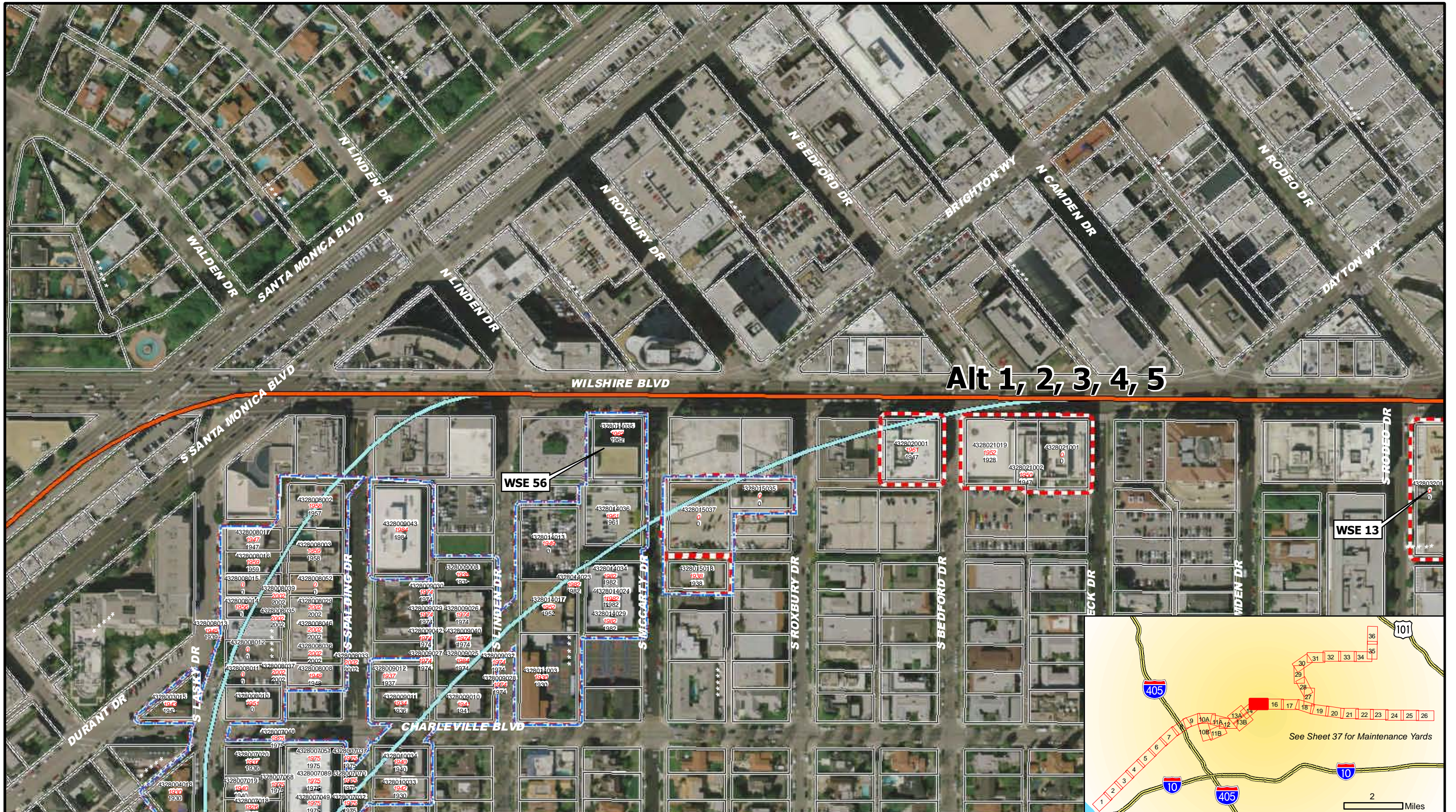
0 100 200 400 Feet

**WESTSIDE SUBWAY EXTENSION
ARCHITECTURAL AND HISTORIC RESOURCES**

March 2010

Sheet 14 of 39

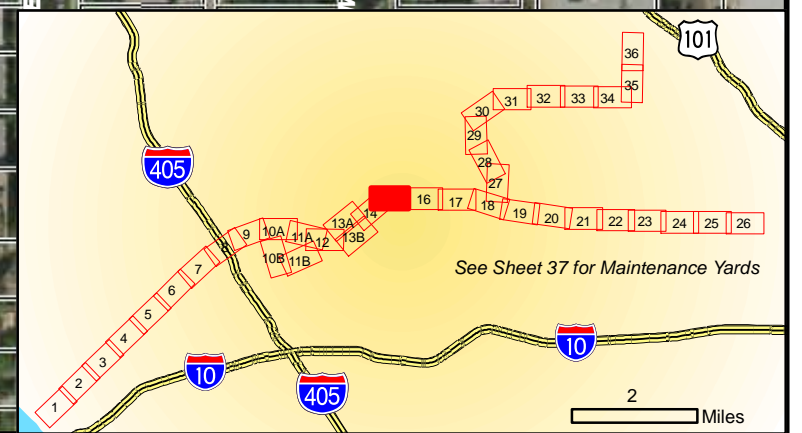
URS



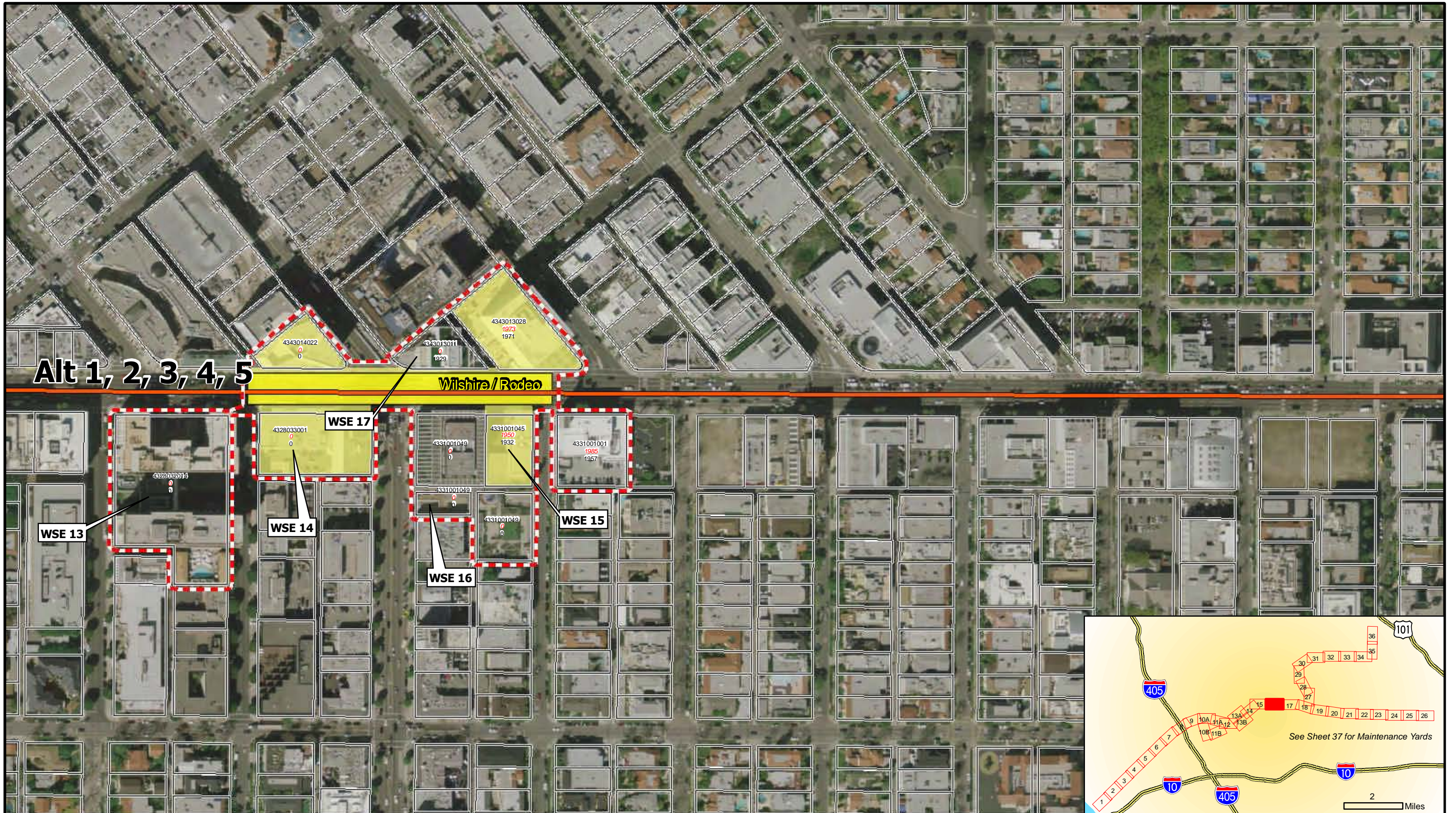
Alt 1, 2, 3, 4, 5

WSE 56

WSE 13



Legend Built Environment APE Properties Subject to Reconnaissance Survey Activities Contributors to Historic District Stations Alignment Alternatives and Options Alternative 1, 2, 3, 4, 5 Alternative 2, 3, 5 Alternative 3, 5 Alternative 4, 5 Options		WSE ID NRHP-, CRHR-, and/or locally eligible or listed properties; and/or Contributors to a Historic District AIN Effective Year Built Year Parcels within APE Project Improvements		 		WESTSIDE SUBWAY EXTENSION ARCHITECTURAL AND HISTORIC RESOURCES		
				March 2010		Sheet 15 of 39		

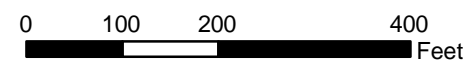


Legend

- Built Environment APE
- Properties Subject to Reconnaissance Survey Activities
- Contributors to Historic District

- Alignment Alternatives and Options**
- Alternative 1, 2, 3, 4, 5
 - Alternative 2, 3, 5
 - Alternative 3, 5
 - Alternative 4, 5
 - Options

- WSE ID** NRHP-, CRHR-, and/or locally eligible or listed properties; and/or Contributors to a Historic District
- AIN** Effective Year
Built Year
- Parcels within APE
 - Project Improvements

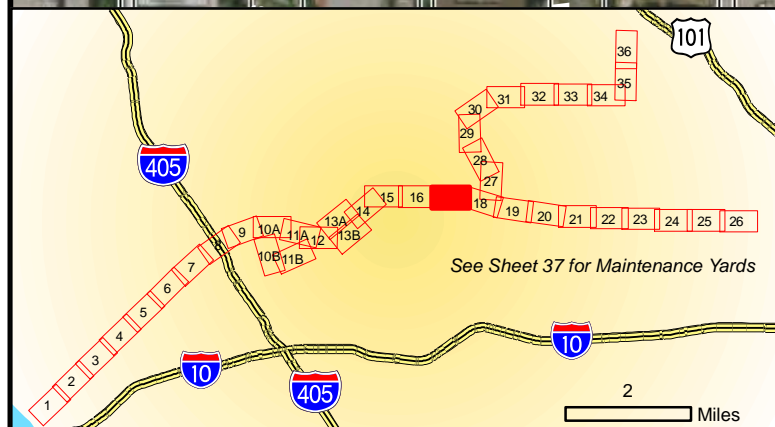
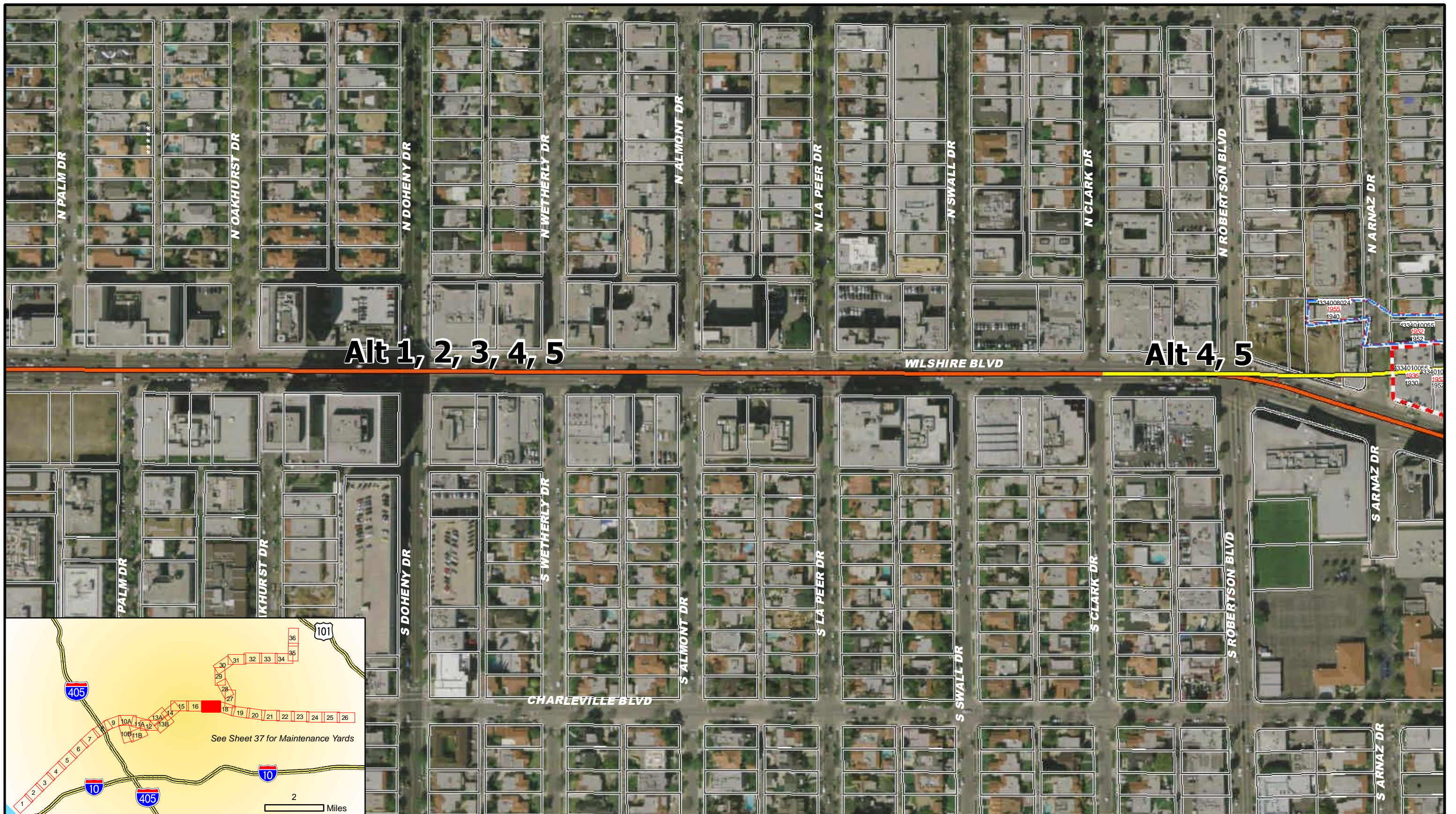


**WESTSIDE SUBWAY EXTENSION
ARCHITECTURAL AND HISTORIC RESOURCES**

March 2010

Sheet 16 of 39



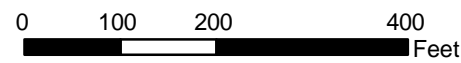


Legend

- Built Environment APE
- Properties Subject to Reconnaissance Survey Activities
- Contributors to Historic District

- Alignment Alternatives and Options**
- Stations
 - Alternative 1, 2, 3, 4, 5
 - Alternative 2, 3, 5
 - Alternative 3, 5
 - Alternative 4, 5
 - Options

- WSE ID** NRHP-, CRHR-, and/or locally eligible or listed properties; and/or Contributors to a Historic District
- AIN** Effective Year
Built Year
- Parcels within APE
 - Project Improvements



**WESTSIDE SUBWAY EXTENSION
ARCHITECTURAL AND HISTORIC RESOURCES**

March 2010

Sheet 17 of 39





Legend

- Built Environment APE
- Properties Subject to Reconnaissance Survey Activities
- Contributors to Historic District

Alignment Alternatives and Options

- Alternative 1, 2, 3, 4, 5
- Alternative 2, 3, 5
- Alternative 3, 5
- Alternative 4, 5
- Options

WSE ID NRHP-, CRHR-, and/or locally eligible or listed properties; and/or Contributors to a Historic District

AIN Effective Year Parcels within APE

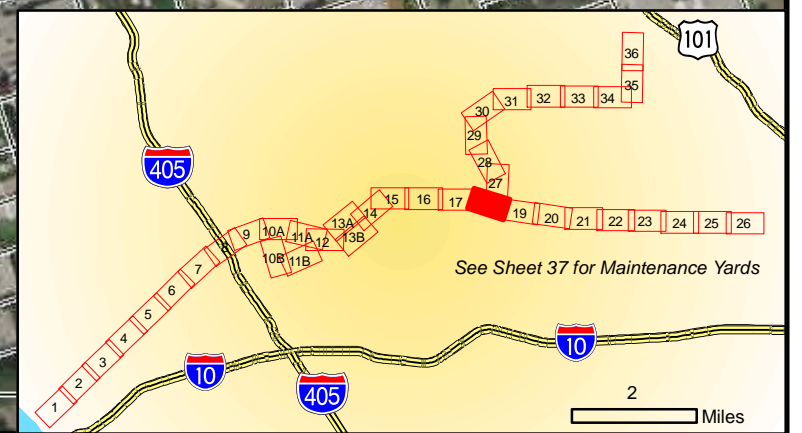
Built Year Project Improvements

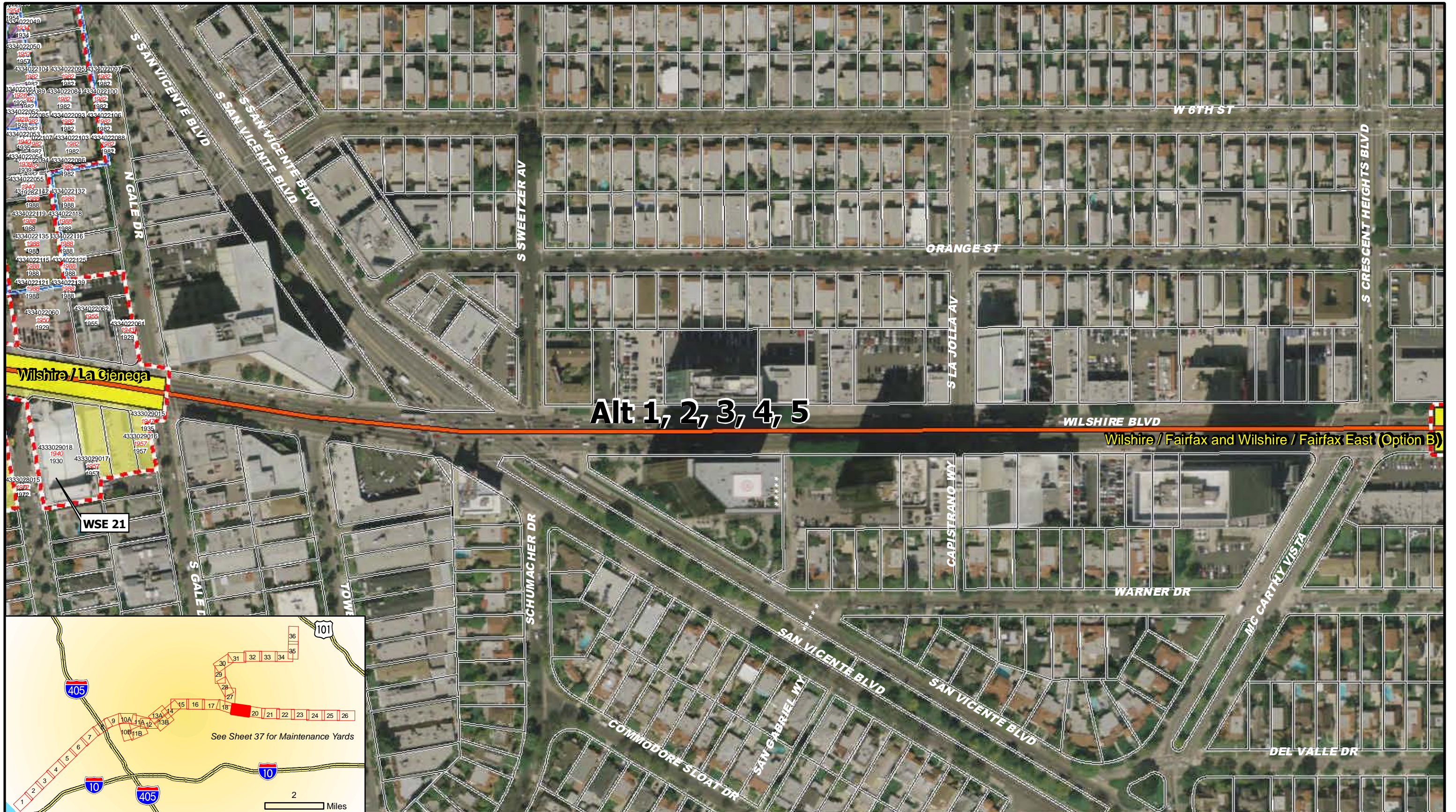


WESTSIDE SUBWAY EXTENSION ARCHITECTURAL AND HISTORIC RESOURCES

March 2010

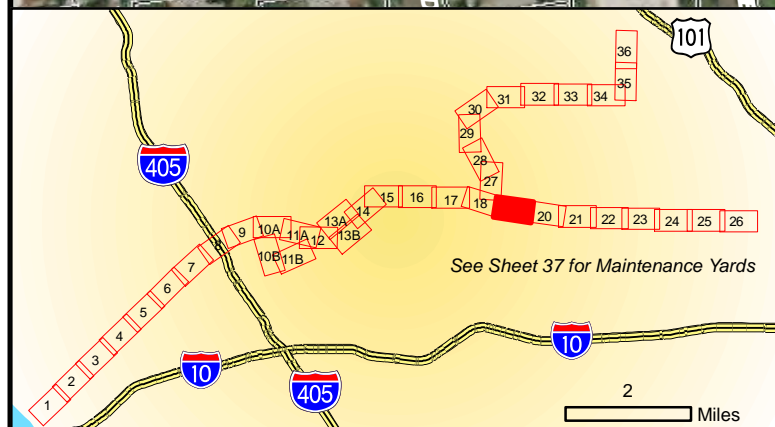
Sheet 18 of 39





Alt 1, 2, 3, 4, 5

Wilshire / Fairfax and Wilshire / Fairfax East (Option B)



Legend

- Built Environment APE
- Properties Subject to Reconnaissance Survey Activities
- Contributors to Historic District
- Stations
- Alignment Alternatives and Options**
 - Alternative 1, 2, 3, 4, 5
 - Alternative 2, 3, 5
 - Alternative 3, 5
 - Alternative 4, 5
 - Options

WSE ID NRHP-, CRHR-, and/or locally eligible or listed properties; and/or Contributors to a Historic District

AIN Effective Year Built Year

Parcels within APE

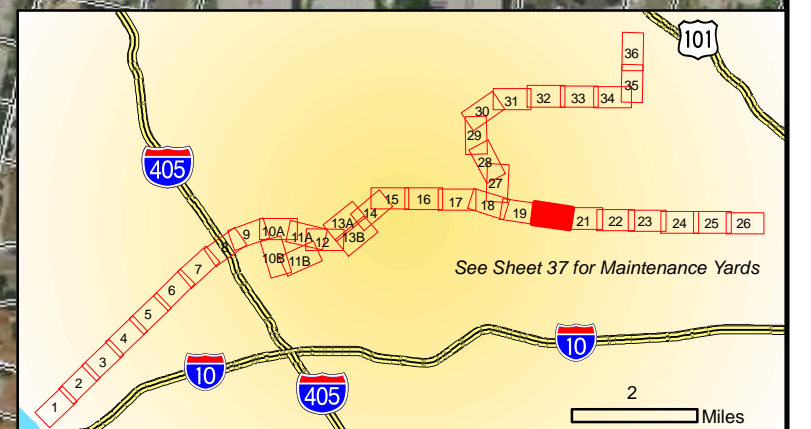
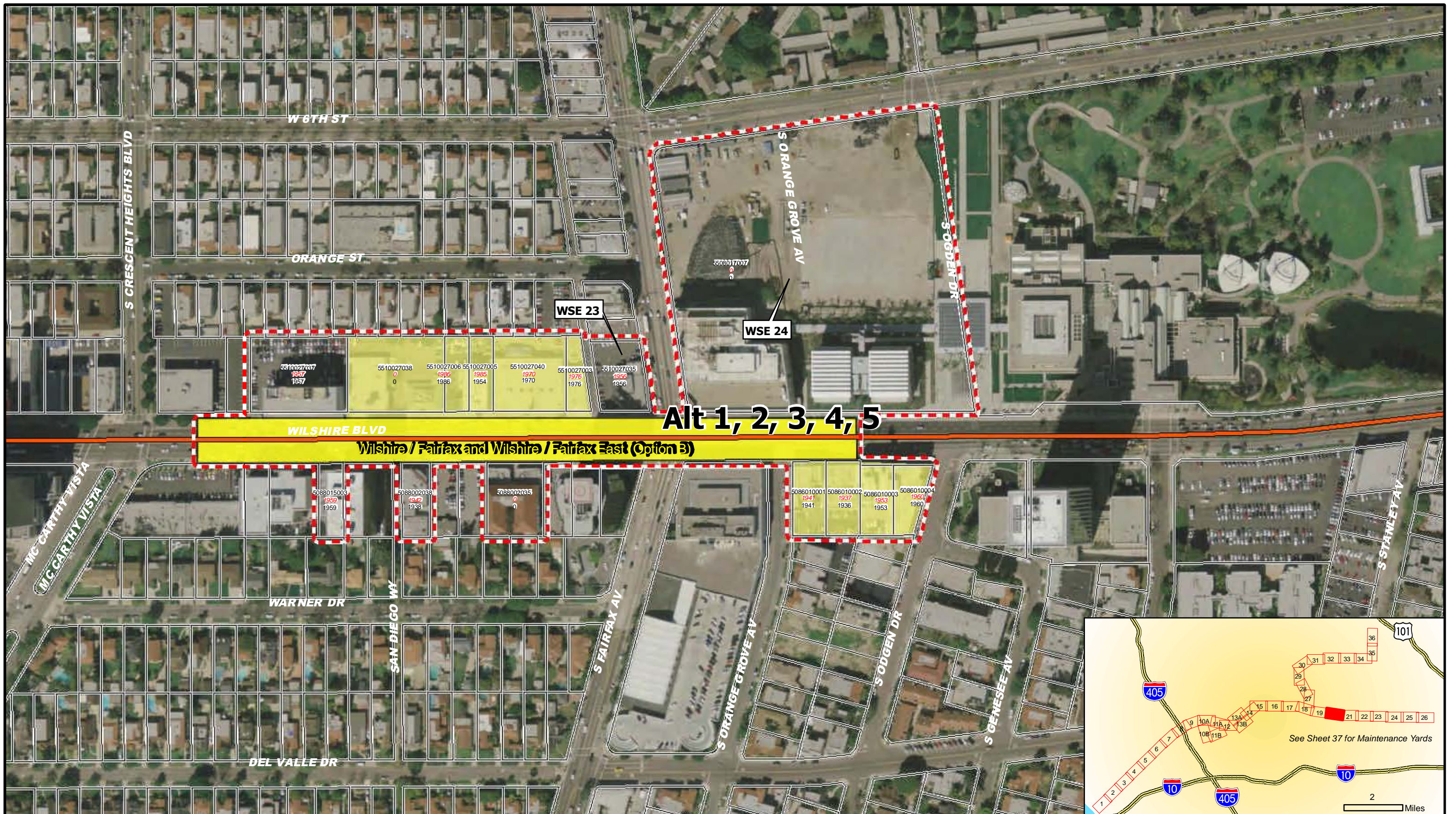
Project Improvements

0 100 200 400 Feet

WESTSIDE SUBWAY EXTENSION
ARCHITECTURAL AND HISTORIC RESOURCES

March 2010

Sheet 19 of 39



Legend

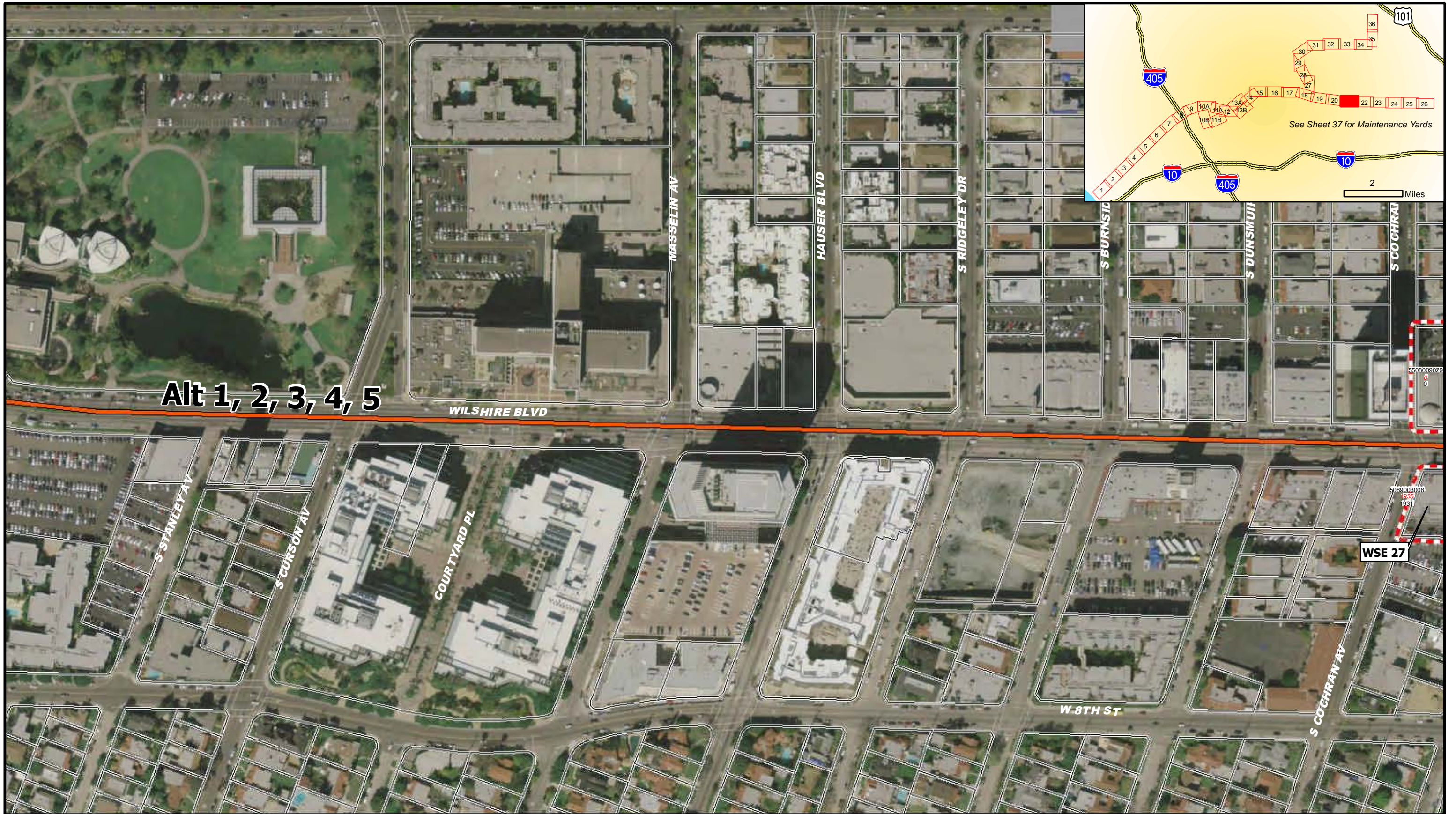
- Built Environment APE
- Properties Subject to Reconnaissance Survey Activities
- Contributors to Historic District
- Stations
- Alignment Alternatives and Options**
 - Alternative 1, 2, 3, 4, 5
 - Alternative 2, 3, 5
 - Alternative 3, 5
 - Alternative 4, 5
 - Options
- WSE ID**
 - NRHP-, CRHR-, and/or locally eligible or listed properties; and/or Contributors to a Historic District
 - Parcels within APE
 - Project Improvements

0 100 200 400 Feet

**WESTSIDE SUBWAY EXTENSION
ARCHITECTURAL AND HISTORIC RESOURCES**

March 2010

Sheet 20 of 39






Alt 1, 2, 3, 4, 5







WILSHIRE BLVD

W 8TH ST

WSE 27


Legend


-  Built Environment APE
-  Properties Subject to Reconnaissance Survey Activities
-  Contributors to Historic District

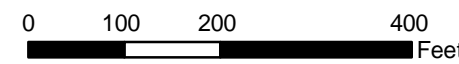
- Alignment Alternatives and Options**
-  Stations
 -  Alternative 1, 2, 3, 4, 5
 -  Alternative 2, 3, 5
 -  Alternative 3, 5
 -  Alternative 4, 5
 -  Options

WSE ID NRHP-, CRHR-, and/or locally eligible or listed properties; and/or Contributors to a Historic District

AIN Effective Year Built Year

 Parcels within APE

 Project Improvements



**WESTSIDE SUBWAY EXTENSION
ARCHITECTURAL AND HISTORICAL**

March 2010

Sheet 21 of 39

