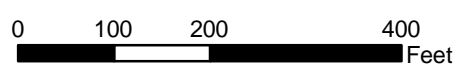
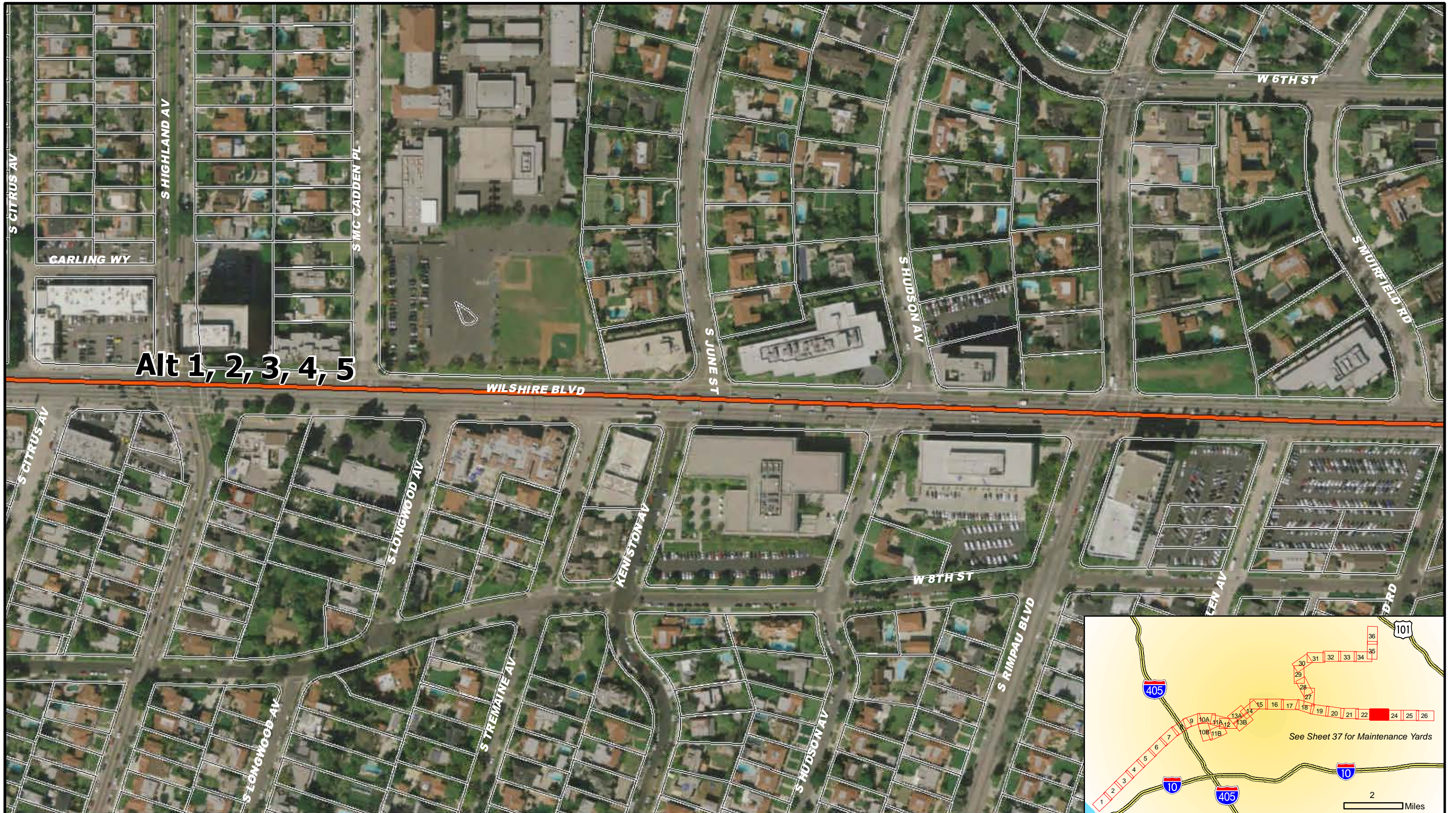


Legend












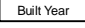


- Built Environment APE
- Properties Subject to Reconnaissance Survey Activities
- Contributors to Historic District
- Stations
- Alignment Alternatives and Options**
 - Alternative 1, 2, 3, 4, 5
 - Alternative 2, 3, 5
 - Alternative 3, 5
 - Alternative 4, 5
 - Options
- WSE ID
- AIN Effective Year Built Year
- NRHP-, CRHR-, and/or locally eligible or listed properties; and/or Contributors to a Historic District
- Parcels within APE
- Project Improvements

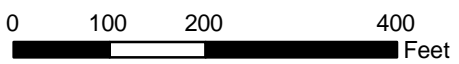


WESTSIDE SUBWAY EXTENSION ARCHITECTURAL AND HISTORIC RESOURCES		
March 2010	Sheet 22 of 39	



Legend

-  Built Environment APE
-  Properties Subject to Reconnaissance Survey Activities
-  Contributors to Historic District
-  Stations
- Alignment Alternatives and Options**
 -  Alternative 1, 2, 3, 4, 5
 -  Alternative 2, 3, 5
 -  Alternative 3, 5
 -  Alternative 4, 5
 -  Options
-  WSE ID NRHP-, CRHR-, and/or locally eligible or listed properties; and/or Contributors to a Historic District
-  AIN Effective Year
-  Built Year
-  Parcels within APE
-  Project Improvements



**WESTSIDE SUBWAY EXTENSION
ARCHITECTURAL AND HISTORIC RESOURCES**

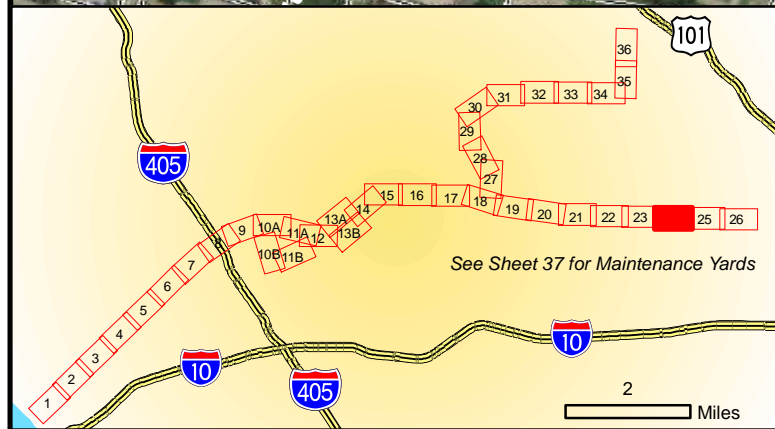
March 2010

Sheet 23 of 39





Alt 1, 2, 3, 4, 5

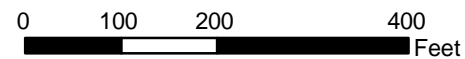


Legend

- Built Environment APE
- Properties Subject to Reconnaissance Survey Activities
- Contributors to Historic District

- Alignment Alternatives and Options**
- Stations
 - Alternative 1, 2, 3, 4, 5
 - Alternative 2, 3, 5
 - Alternative 3, 5
 - Alternative 4, 5
 - Options

- WSE ID** NRHP-, CRHR-, and/or locally eligible or listed properties; and/or Contributors to a Historic District
- AIN** Effective Year
Built Year
- Parcels within APE
 - Project Improvements

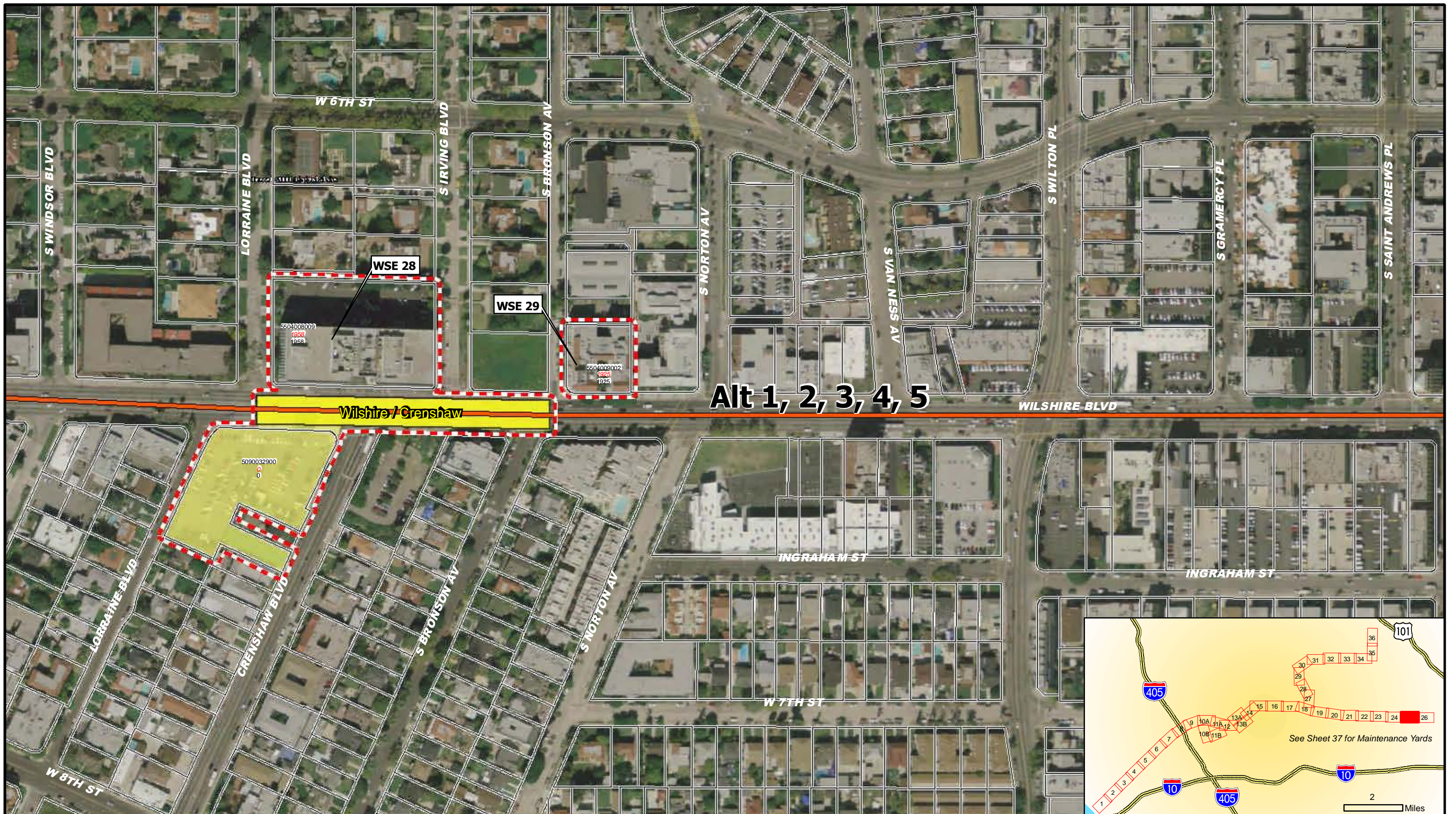


**WESTSIDE SUBWAY EXTENSION
ARCHITECTURAL AND HISTORIC RESOURCES**

March 2010

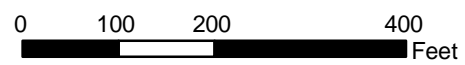
Sheet 24 of 39





Legend

- Built Environment APE
- Properties Subject to Reconnaissance Survey Activities
- Contributors to Historic District
- Stations
- Alignment Alternatives and Options**
 - Alternative 1, 2, 3, 4, 5
 - Alternative 2, 3, 5
 - Alternative 3, 5
 - Alternative 4, 5
 - Options
- WSE ID
- AIN Effective Year Built Year
- NRHP-, CRHR-, and/or locally eligible or listed properties; and/or Contributors to a Historic District
- Parcels within APE
- Project Improvements

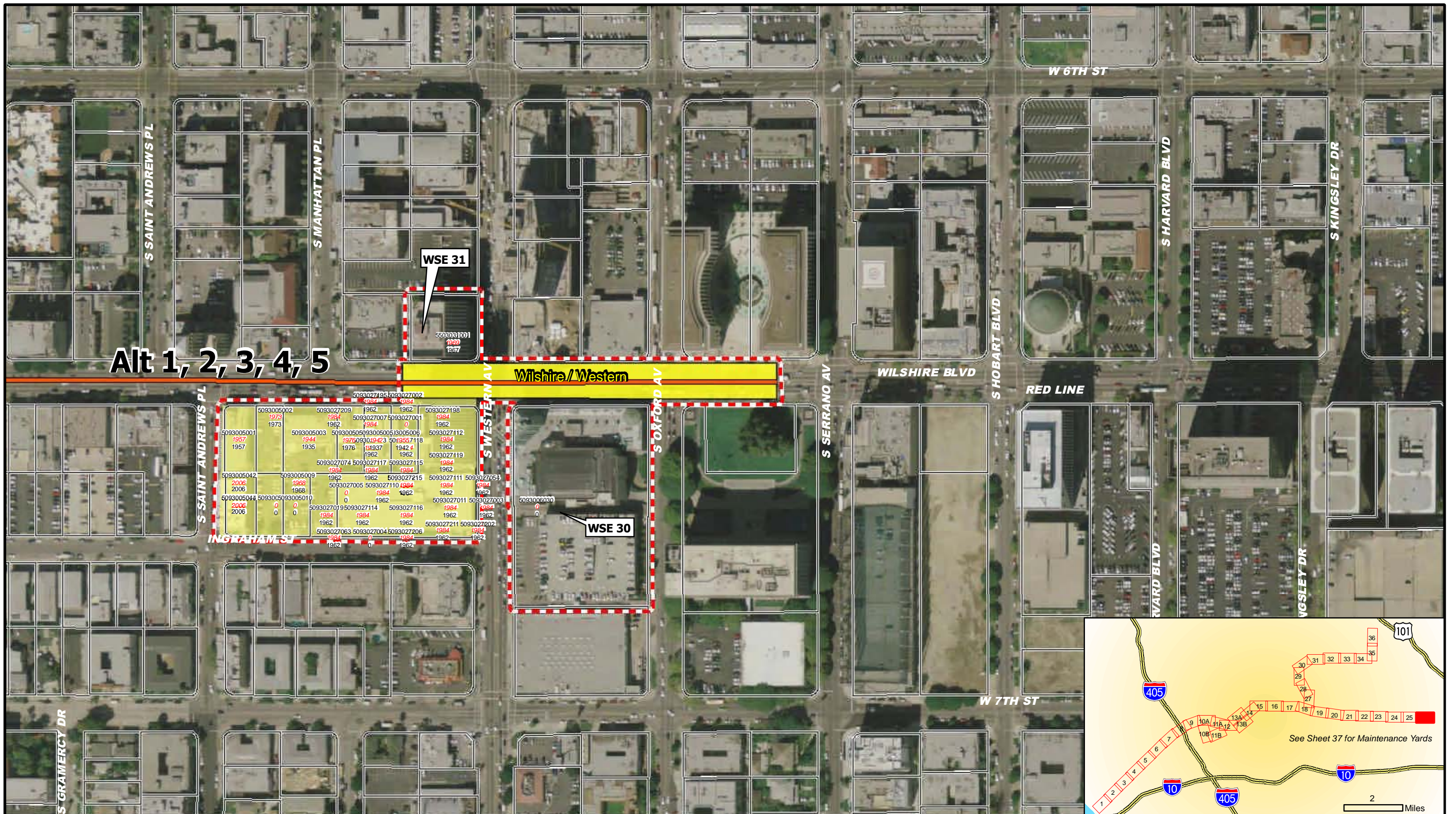


**WESTSIDE SUBWAY EXTENSION
ARCHITECTURAL AND HISTORIC RESOURCES**

March 2010

Sheet 25 of 39





Alt 1, 2, 3, 4, 5

Wishire/Western

5093005001	5093005002	5093027209	5093027007	5093027001	5093027198
1957	1973	1962	1984	1984	1984
1944	1973	1962	1984	1984	1984
5093005003	5093005009	5093005050	5093005053	5093005066	5093027112
1935	1968	1976	1984	1984	1984
1944	1968	1976	1984	1984	1984
5093027074	5093027117	5093027115	5093027119	5093027119	5093027119
1984	1984	1984	1984	1984	1984
1984	1984	1984	1984	1984	1984
5093005042	5093005009	1962	1962	5093027215	5093027111
2006	1968	1962	1962	1984	1984
2006	1968	1962	1962	1984	1984
5093005044	5093005093	5093027005	5093027110	5093027110	5093027054
2006	0	1984	1984	1984	1984
2006	0	1984	1984	1984	1984
5093027019	5093027114	5093027116	5093027011	5093027003	5093006030
1984	1984	1984	1984	1984	1984
1962	1962	1962	1962	1962	1962
5093027063	5093027004	5093027206	5093027211	5093027202	5093027202
1984	1984	1984	1984	1984	1984
1962	1962	1962	1962	1962	1962

- Legend**
- Red dashed line: Built Environment APE
 - Blue dashed line: Properties Subject to Reconnaissance Survey Activities
 - Purple hatched area: Contributors to Historic District

- Alignment Alternatives and Options**
- Green line: Alternative 1, 2, 3, 4, 5
 - Orange line: Alternative 2, 3, 5
 - Yellow line: Alternative 3, 5
 - Light blue line: Alternative 4, 5
 - Dark blue line: Options

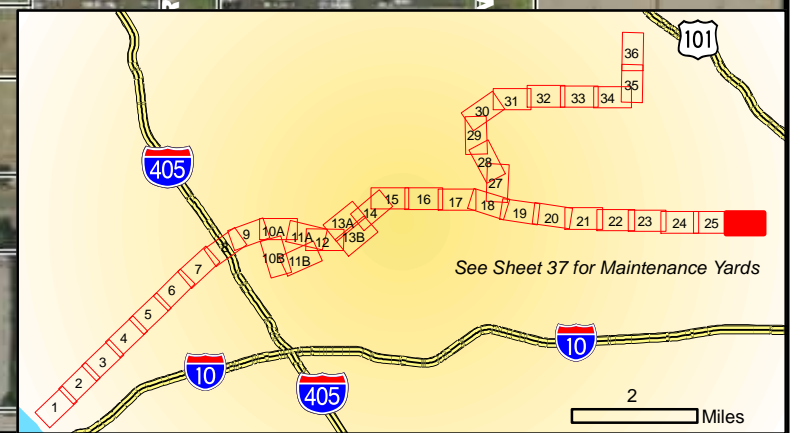
- WSE ID** NRHP-, CRHR-, and/or locally eligible or listed properties; and/or Contributors to a Historic District
- AIN** Effective Year Built Year
- Yellow box: Parcels within APE
 - Yellow box: Project Improvements



**WESTSIDE SUBWAY EXTENSION
ARCHITECTURAL AND HISTORICAL RESOURCES**

March 2010

Sheet 26 of 39





WSE 57 AND 77 - 86 are potential contributors to Historic District 4

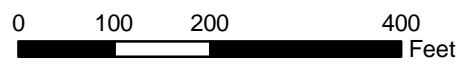
Beverly Center Area

Alt 4, 5

- Legend**
- Built Environment APE
 - Properties Subject to Reconnaissance Survey Activities
 - Contributors to Historic District

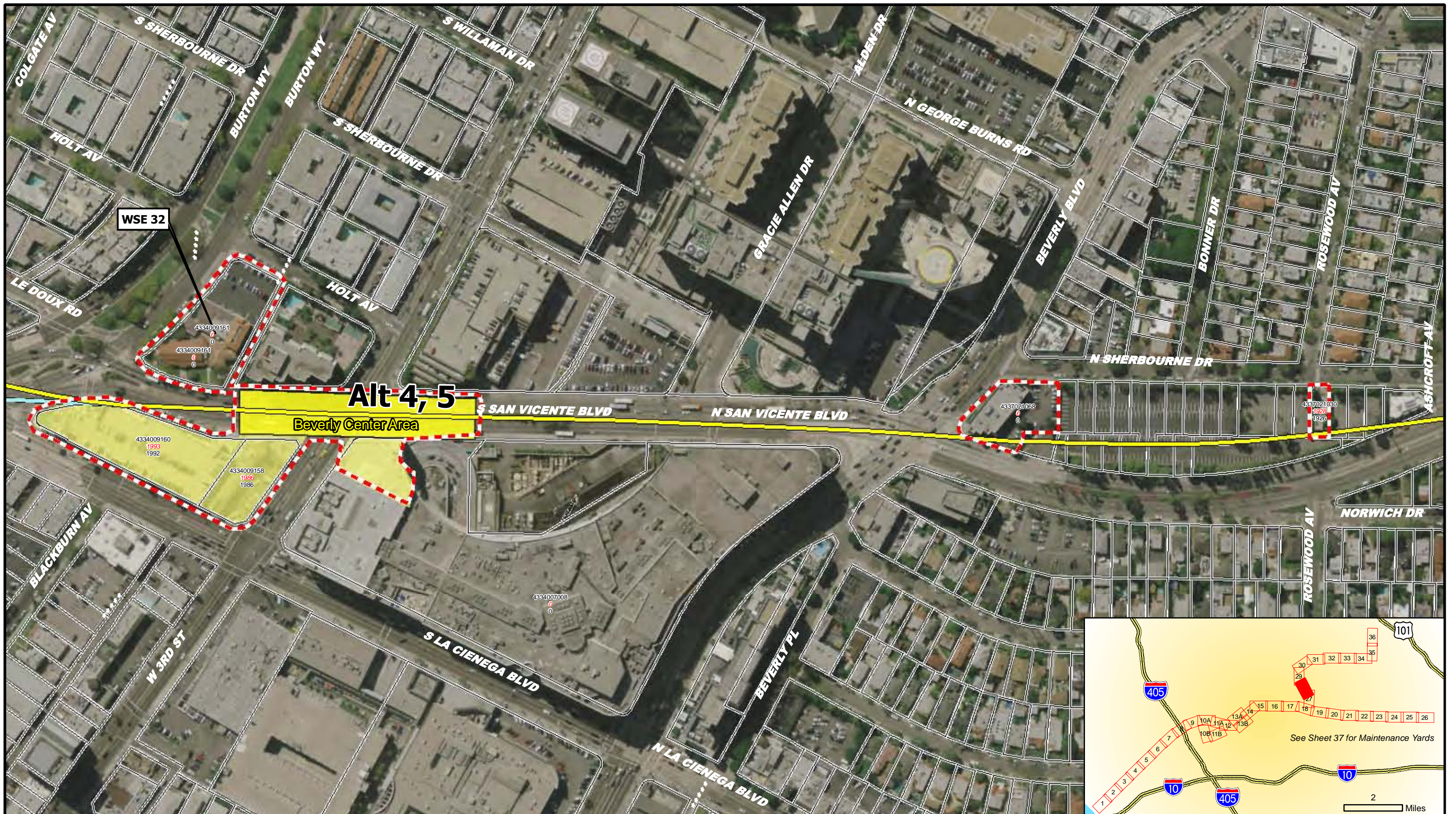
- Alignment Alternatives and Options**
- Alternative 1, 2, 3, 4, 5
 - Alternative 2, 3, 5
 - Alternative 3, 5
 - Alternative 4, 5
 - Options

- WSE ID**
- NRHP-, CRHR-, and/or locally eligible or listed properties; and/or Contributors to a Historic District
 - Parcels within APE
 - Project Improvements



**WESTSIDE SUBWAY EXTENSION
ARCHITECTURAL AND HISTORIC RESOURCES**

March 2010	Sheet 27 of 39	
------------	----------------	--



Legend

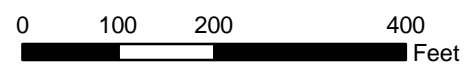
- Built Environment APE
- Properties Subject to Reconnaissance Survey Activities
- Contributors to Historic District

- Alignment Alternatives and Options**
- Stations
 - Alternative 1, 2, 3, 4, 5
 - Alternative 2, 3, 5
 - Alternative 3, 5
 - Alternative 4, 5
 - Options

WSE ID

AIN
Effective Year
Built Year

- NRHP-, CRHR-, and/or locally eligible or listed properties; and/or Contributors to a Historic District
- Parcels within APE
- Project Improvements

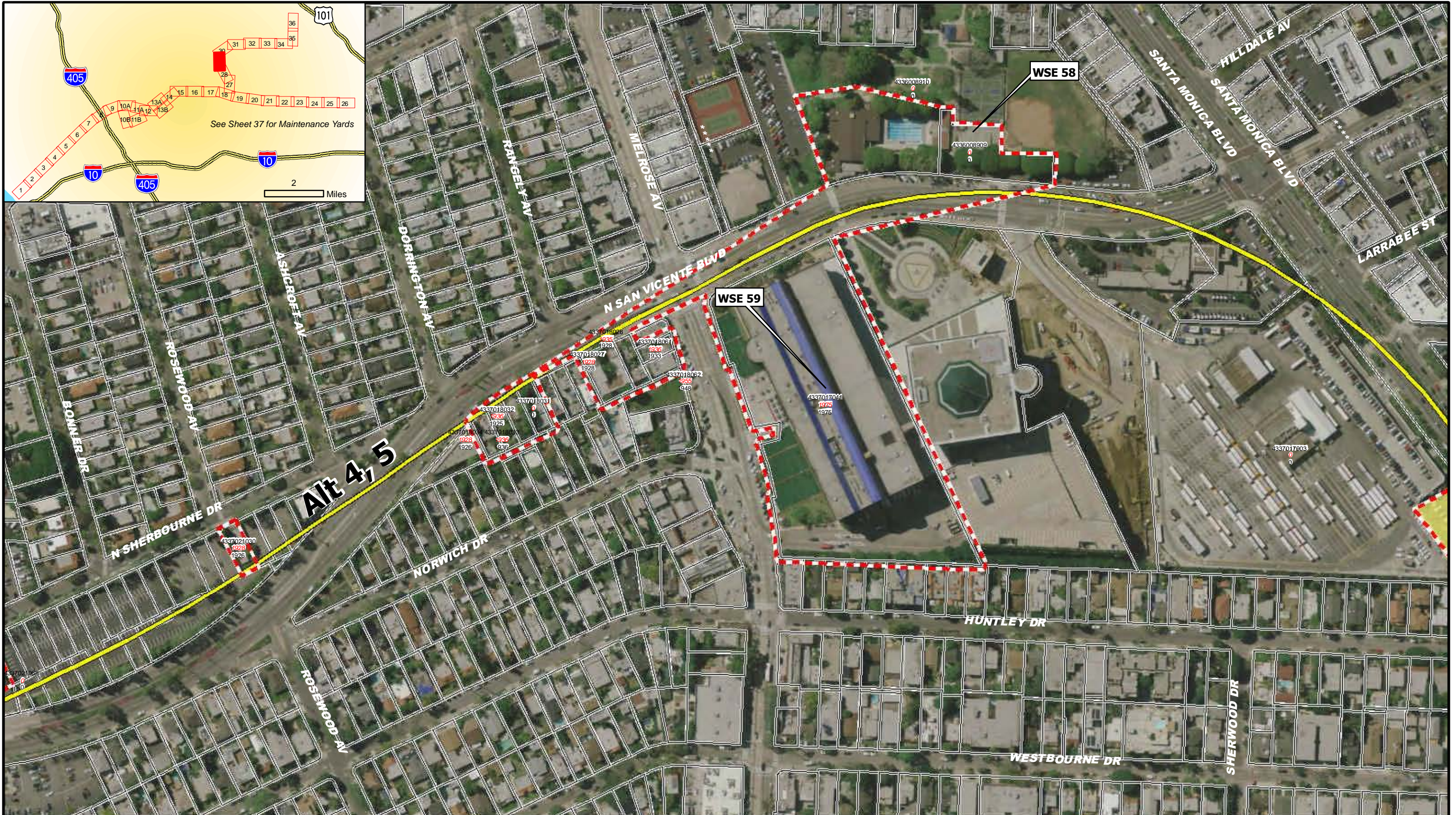
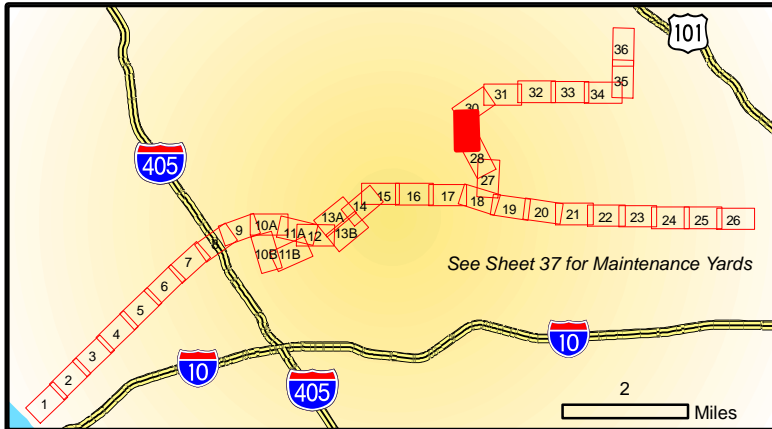


**WESTSIDE SUBWAY EXTENSION
ARCHITECTURAL AND HISTORIC RESOURCES**

March 2010

Sheet 28 of 39





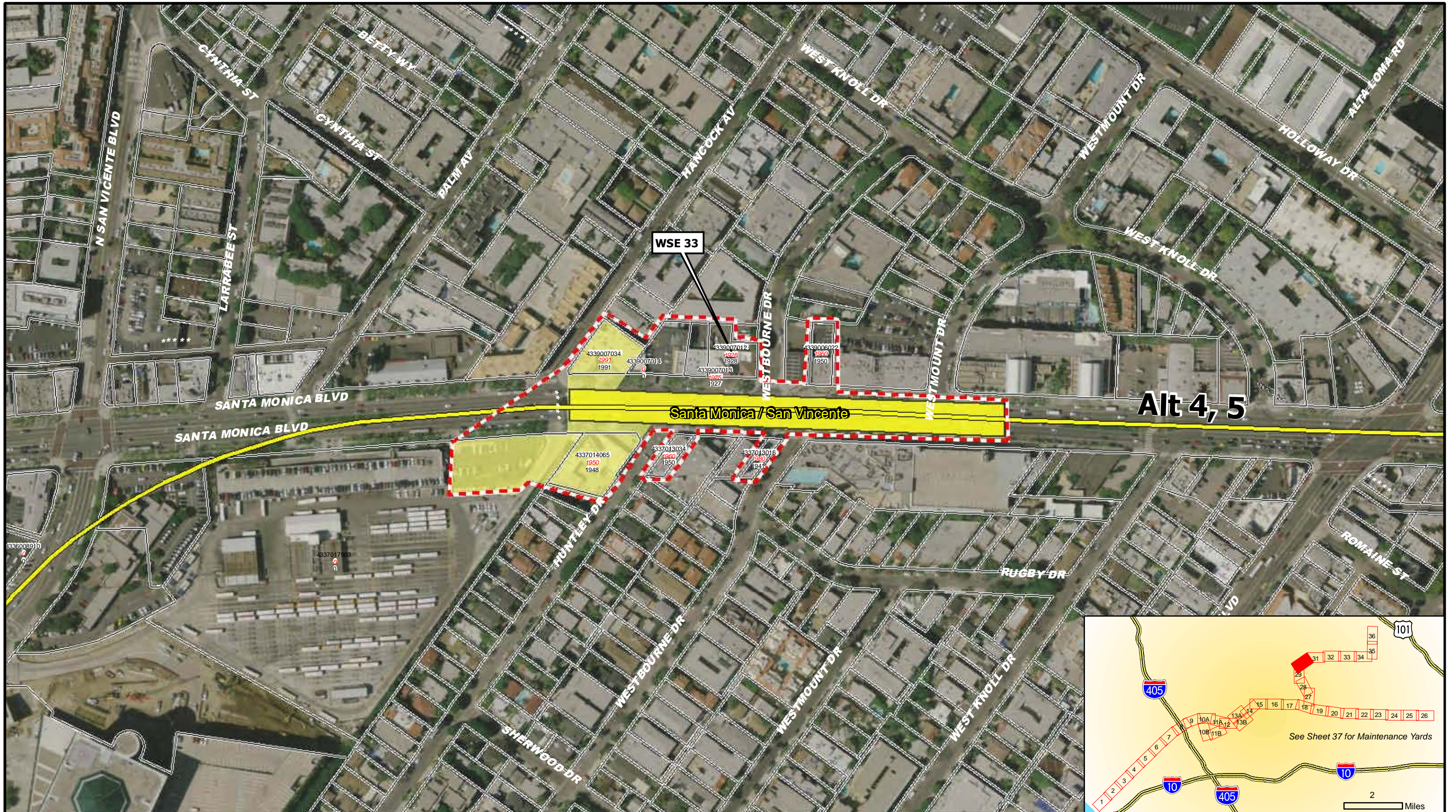
Legend

- Built Environment APE
- Properties Subject to Reconnaissance Survey Activities
- Contributors to Historic District
- Stations
- Alignment Alternatives and Options**
 - Alternative 1, 2, 3, 4, 5
 - Alternative 2, 3, 5
 - Alternative 3, 5
 - Alternative 4, 5
 - Options
- WSE ID**
 - NRHP-, CRHR-, and/or locally eligible or listed properties; and/or Contributors to a Historic District
 - Parcels within APE
 - Project Improvements
- AIN**
 - Effective Year
 - Built Year

0 100 200 400 Feet

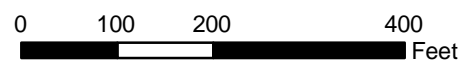
**WESTSIDE SUBWAY EXTENSION
ARCHITECTURAL AND HISTORIC RESOURCES**

March 2010	Sheet 29 of 39	
------------	----------------	--



Legend

- Built Environment APE
- Properties Subject to Reconnaissance Survey Activities
- Contributors to Historic District
- Stations
- Alignment Alternatives and Options**
 - Alternative 1, 2, 3, 4, 5
 - Alternative 2, 3, 5
 - Alternative 3, 5
 - Alternative 4, 5
 - Options
- WSE ID** NRHP-, CRHR-, and/or locally eligible or listed properties; and/or Contributors to a Historic District
- Parcels within APE
- Project Improvements



**WESTSIDE SUBWAY EXTENSION
ARCHITECTURAL AND HISTORIC RESOURCES**

March 2010

Sheet 30 of 39

