



3.0 EXISTING PARKING CONDITIONS

The availability of parking throughout the Study Area varies significantly depending on location. Below is a summary of on-street and off-street parking in the vicinity of the potential station locations.

3.1 On-Street Parking

3.1.1 Parking Restrictions

Parking restrictions were noted for every block face of each street located within a one-half mile walking distance of potential station locations. The following were the most common posted restrictions at station locations:

- Metered spaces with time-limit restrictions (Figure 3-1)
- Time-limit restrictions (Figure 3-2)
- Daily restrictions (Figure 3-3)
- Residential permit parking restrictions (Figure 3-4)
- Street-sweeping restrictions (considered unrestricted in this analysis [Figure 3-5])
- Peak-period restrictions (considered unrestricted if limited to one peak period only [Figure 3-6])

Locations with street-sweeping restrictions, and locations with peak-period restrictions limited to either the AM or PM peak period, were considered “unrestricted” for the purpose of identifying potential spillover parking. The other restrictions summarized above would prevent Westside Subway Extension riders from parking throughout the day. Parkers would be ticketed if they park their vehicle for longer than two hours, during both peak periods, or if they do not have a residential permit on their vehicle. Because of this enforcement, spillover parking would not be expected to occur in these locations.



Figure 3-1. Metered Spaces with Time-Limit Restrictions



Figure 3-2. Time-Limit Restrictions



Figure 3-3. Daily Restrictions



Figure 3-4. Residential Permit Parking Restrictions



Figure 3-5. Street-Sweeping Restrictions

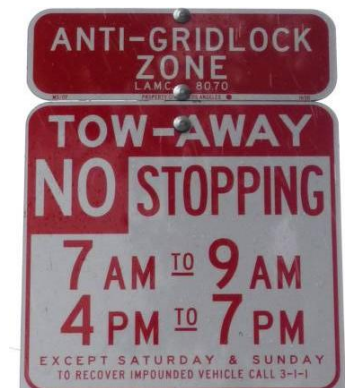


Figure 3-6. Peak-Period Restrictions



Figures 3-7 through 3-28 illustrate the locations where “unrestricted” parking is currently available around each station—locations that have the potential to attract spillover parking. The unrestricted parking supply around each station is discussed below. In general, street-sweeping restrictions apply on nearly all streets labeled as “unrestricted.”

- **Wilshire/Crenshaw Station**—As illustrated in Figure 3-7, parking is generally unrestricted on residential streets beyond one or two blocks north and south of Wilshire Boulevard. A variety of parking restrictions are in place on the majority of streets within a one-half mile walking distance of this station, including time-limit restrictions, peak-period restrictions and daily restrictions.
- **Wilshire/La Brea Station**—As illustrated in Figure 3-8, several residential streets two to three blocks north of Wilshire Boulevard and one to four blocks south of Wilshire Boulevard have unrestricted parking. A variety of parking restrictions are in place on the remaining streets within a one-half mile walking distance of this station, including time-limit restrictions, peak-period restrictions, and residential permit restrictions. Parking meters with time-limit restrictions are installed along Wilshire Boulevard and La Brea Avenue.
- **Wilshire/Fairfax Station**—As illustrated in Figure 3-9 for this station location, and Figure 3-10 for the optional station location, parking is unrestricted on a few block faces within a one-half mile walking distance of the station, but parking is restricted on most blocks. A variety of parking restrictions are in place within a one-half mile walking distance of this station, including time-limit restrictions, and peak-period restrictions. Parking meters with time-limit restrictions are installed along Wilshire Boulevard and Fairfax Avenue.
- **Wilshire/La Cienega Station**—As illustrated in Figure 3-11 for this station location, and Figure 3-12 for the optional station location, parking is generally unrestricted beyond two blocks north and south of Wilshire Boulevard. A variety of parking restrictions are in place on the remaining streets within a one-half mile walking distance of this station, including time-limit restrictions, and peak-period restrictions. Parking meters with time-limit restrictions are installed along Wilshire Boulevard and San Vicente Boulevard.

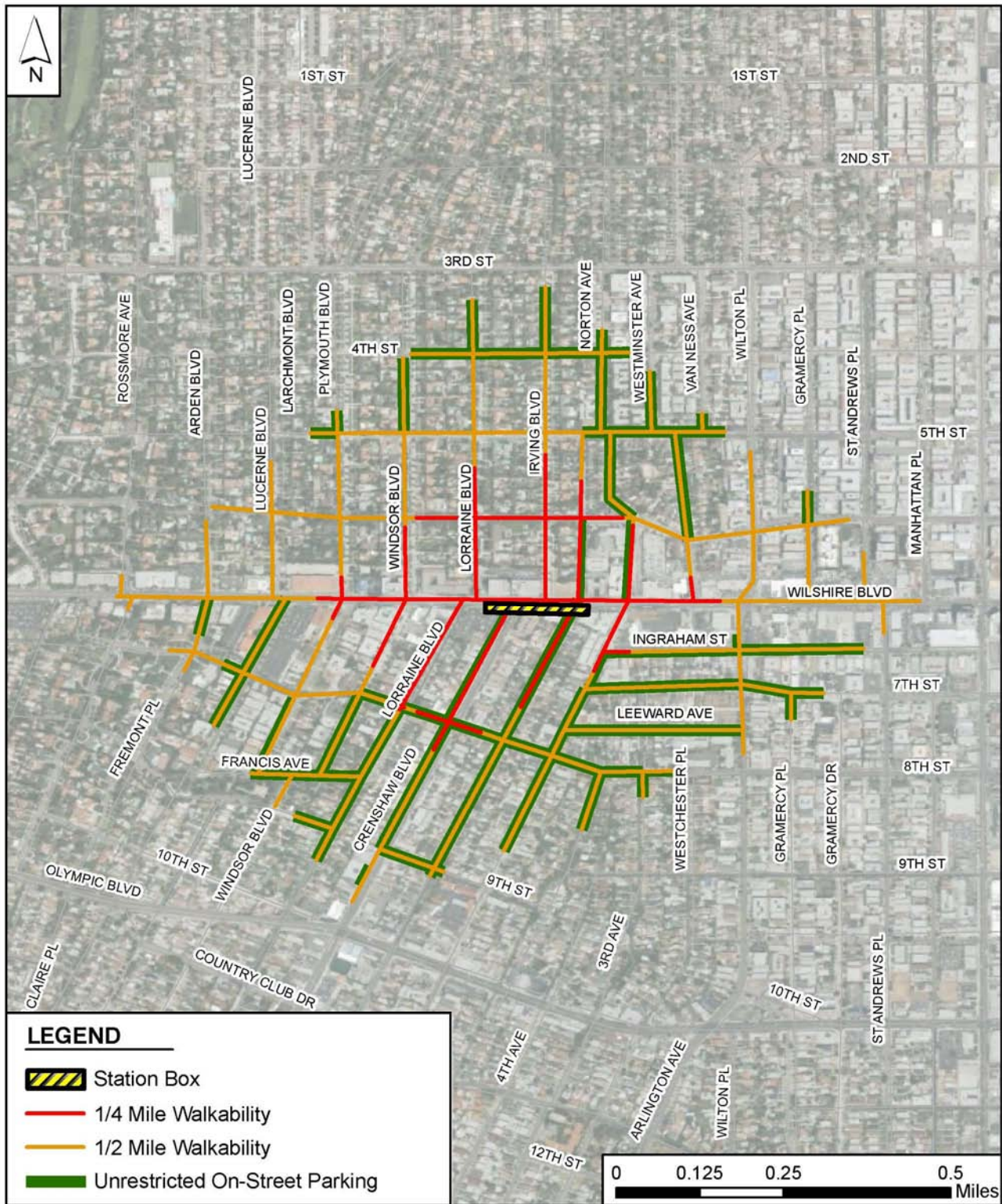


Figure 3-7. Unrestricted On-Street Parking—Wilshire/Crenshaw Station

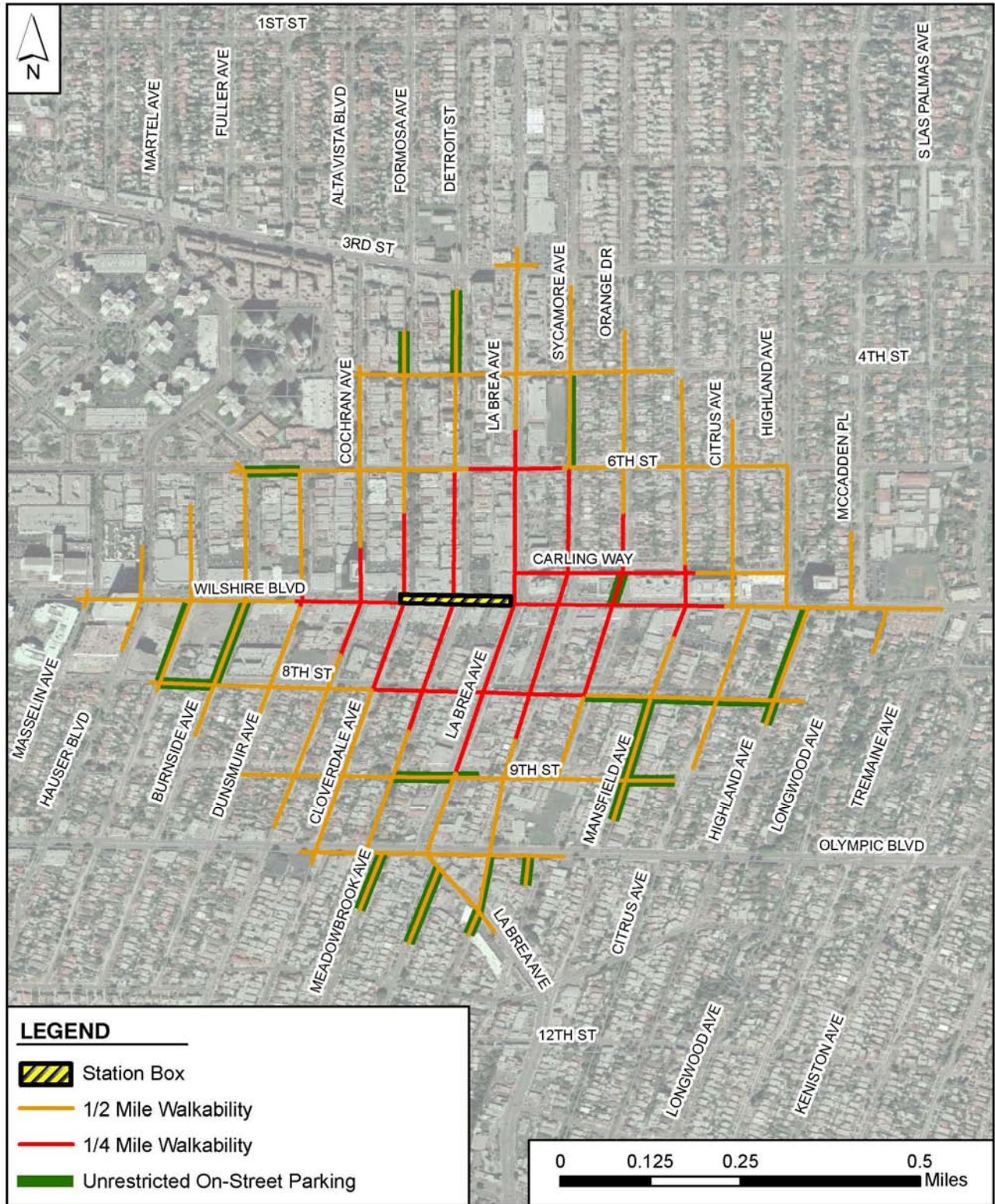


Figure 3-8. Unrestricted On-Street Parking—Wilshire/La Brea Station

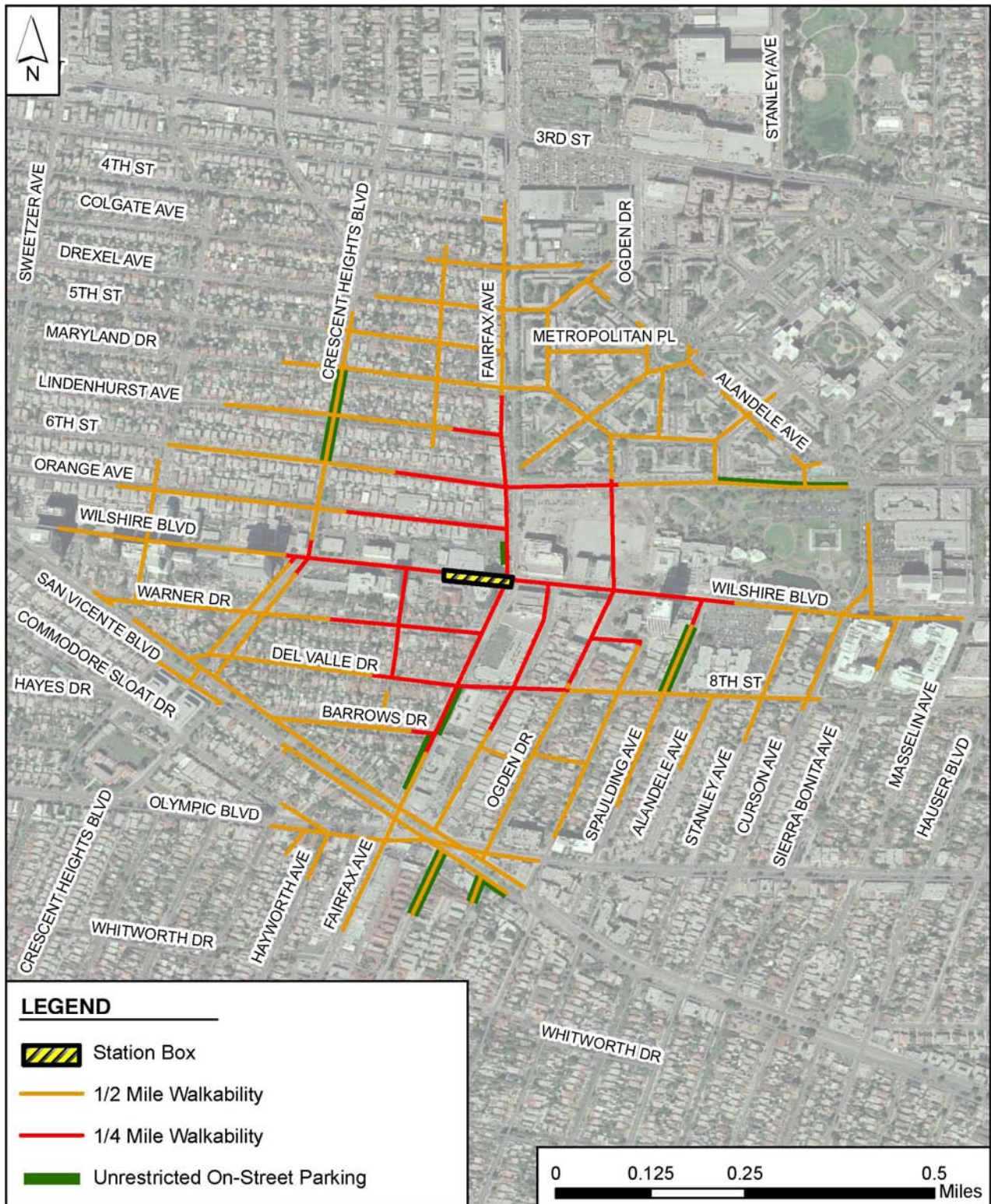


Figure 3-9. Unrestricted On-Street Parking—Wilshire/Fairfax Station

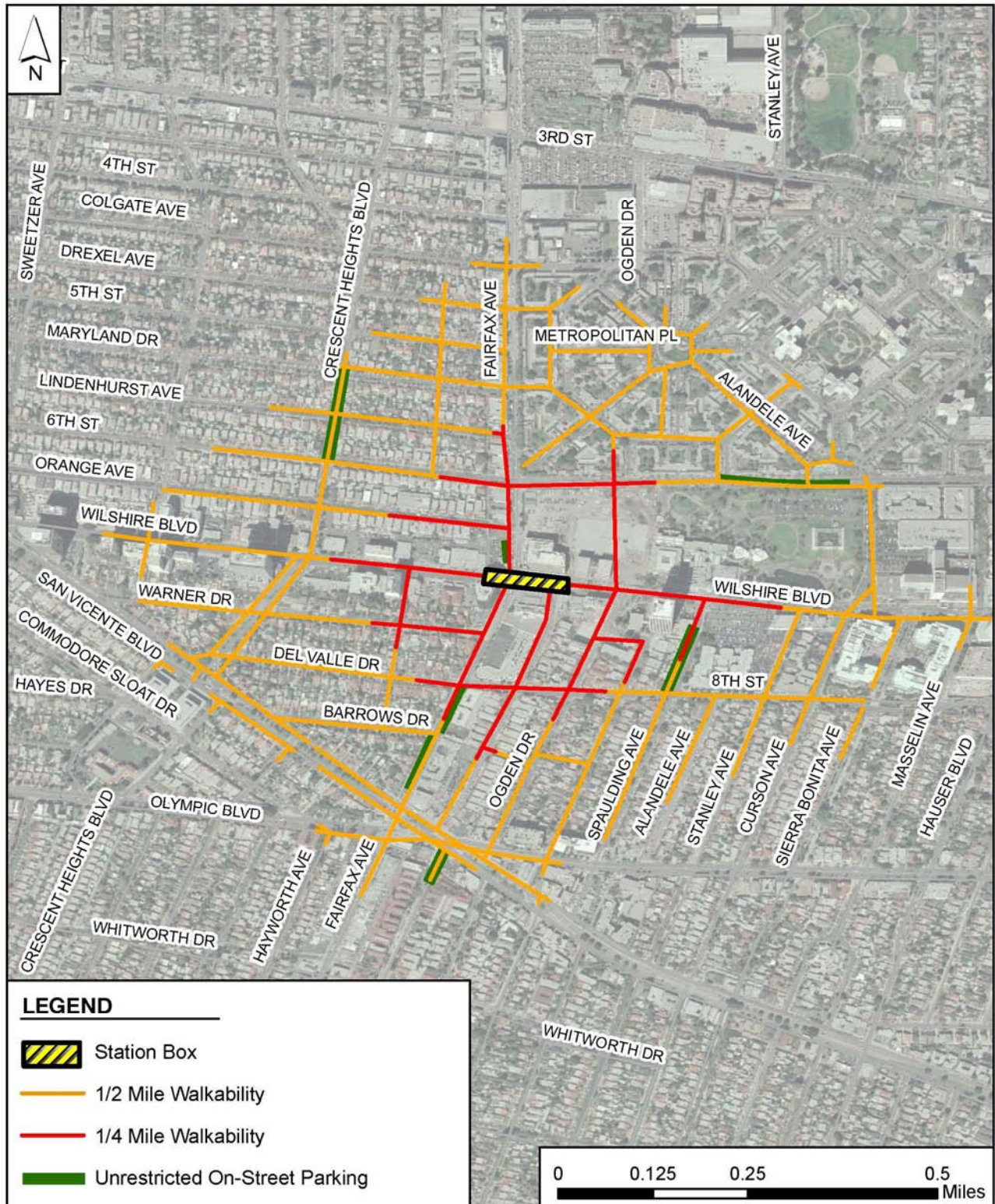


Figure 3-10. Unrestricted On-Street Parking—Wilshire/Fairfax Optional Station

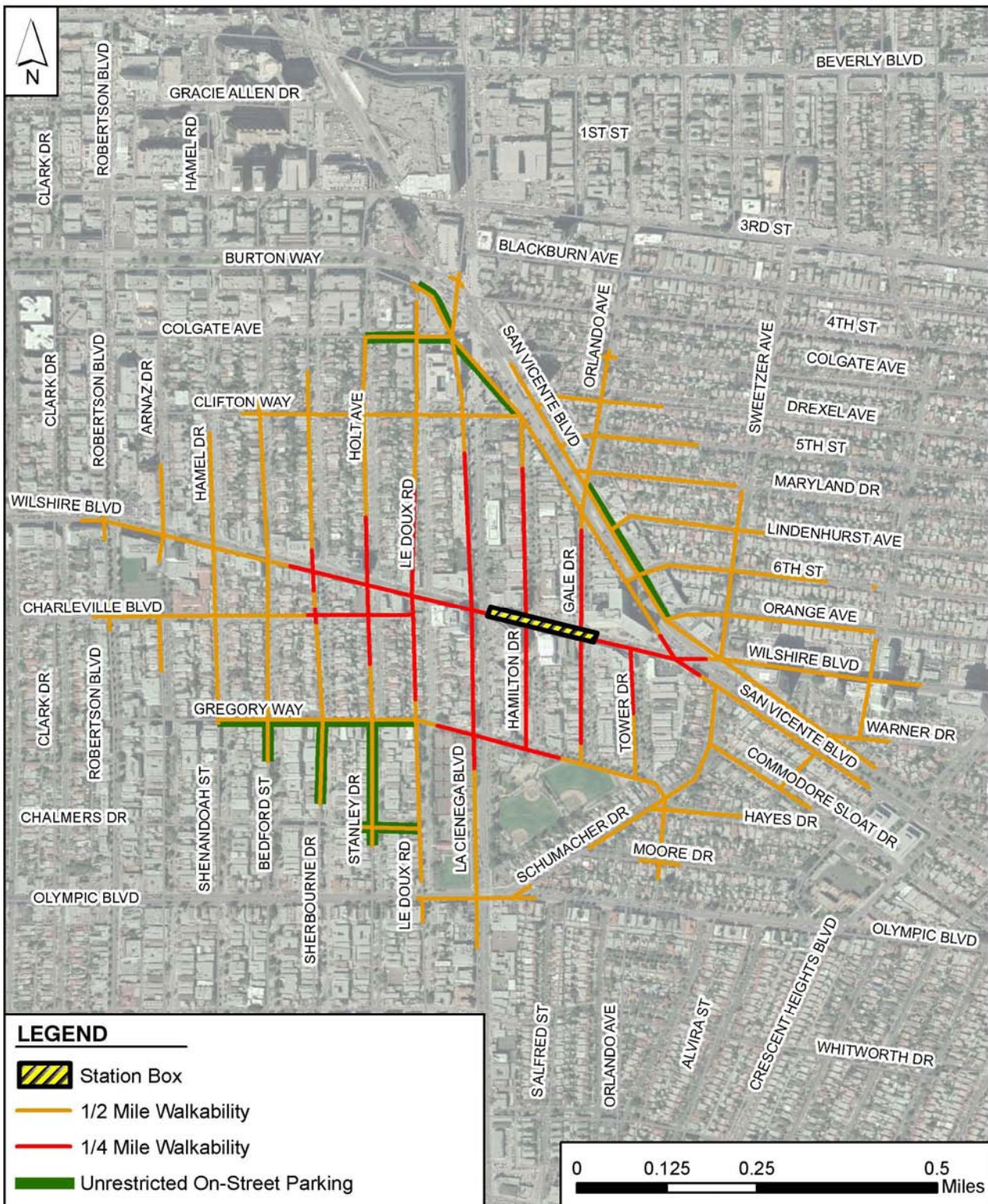


Figure 3-11. Unrestricted On-Street Parking—Wilshire/La Cienega Station