

Figure 3-12. Unrestricted On-Street Parking—Wilshire/La Cienega Optional Station



- **Wilshire/Rodeo Station**—As illustrated in Figure 3-13, no unrestricted parking spaces are available within one-half mile walking distance of this station. A variety of parking restrictions are in place, including time-limit restrictions, and residential permit-parking restrictions. Parking meters with time-limit restrictions are installed along Wilshire Boulevard and for one or two blocks north and south of Wilshire Boulevard on most streets in the station area.
- **Century City Station**—As illustrated in Figure 3-14, there is minimal unrestricted parking provided at the western edge of the one-half mile walking distance to this station location. Parking at anytime is prohibited on most streets within a one-half mile walking distance of this station, but several streets have residential daily parking restrictions. Parking meters with time-limit restrictions are installed along Santa Monica Boulevard. As illustrated in Figure 3-15, there are no unrestricted spaces provided around the optional station location.
- **Westwood/UCLA Station**—As illustrated in Figure 3-16 for this station location, and Figure 3-17 for the optional station location, parking is unrestricted on some blocks northwest, southwest, and east of each potential station. A variety of parking restrictions are in place on the remaining streets within a one-half mile walking distance of this station, including time-limit restrictions, peak-period restrictions, and residential permit-restrictions. Parking meters with time-limit restrictions are installed throughout the Westwood Village area north of Wilshire Boulevard, as well as along Westwood Boulevard south of Wilshire Boulevard.
- **Westwood/VA Hospital Station**—As illustrated in Figure 3-18 for this station location, and Figure 3-19 for the optional station location, minimal unrestricted parking is provided on Federal Avenue and Sepulveda Boulevard south of Wilshire Boulevard. Parking at anytime is prohibited on most of the remaining streets, since they are contained within the campus of the VA. However, a few blocks have time-limit parking restrictions.
- **Wilshire/Bundy Station**—As illustrated in Figure 3-20, parking is generally unrestricted on most streets within a one-half mile walking distance, with the exception of the neighborhood to the northwest of the potential station location. A variety of parking restrictions are in place to the northwest, including time-limit restrictions, peak-period restrictions, and residential permit restrictions. Parking meters with time-limit restrictions are installed along Wilshire Boulevard.
- **Wilshire/26th Station**—As illustrated in Figure 3-21, some unrestricted parking is located in the neighborhood north of Washington Avenue. A variety of parking restrictions are in place on the remaining streets within a one-half mile walking distance of this station, including time-limit restrictions, peak-period restrictions, and residential permit restrictions. Parking meters with time-limit restrictions are installed along Wilshire Boulevard, portions of the blocks closest to Wilshire Boulevard on north-south running streets, and certain blocks along Arizona Avenue.

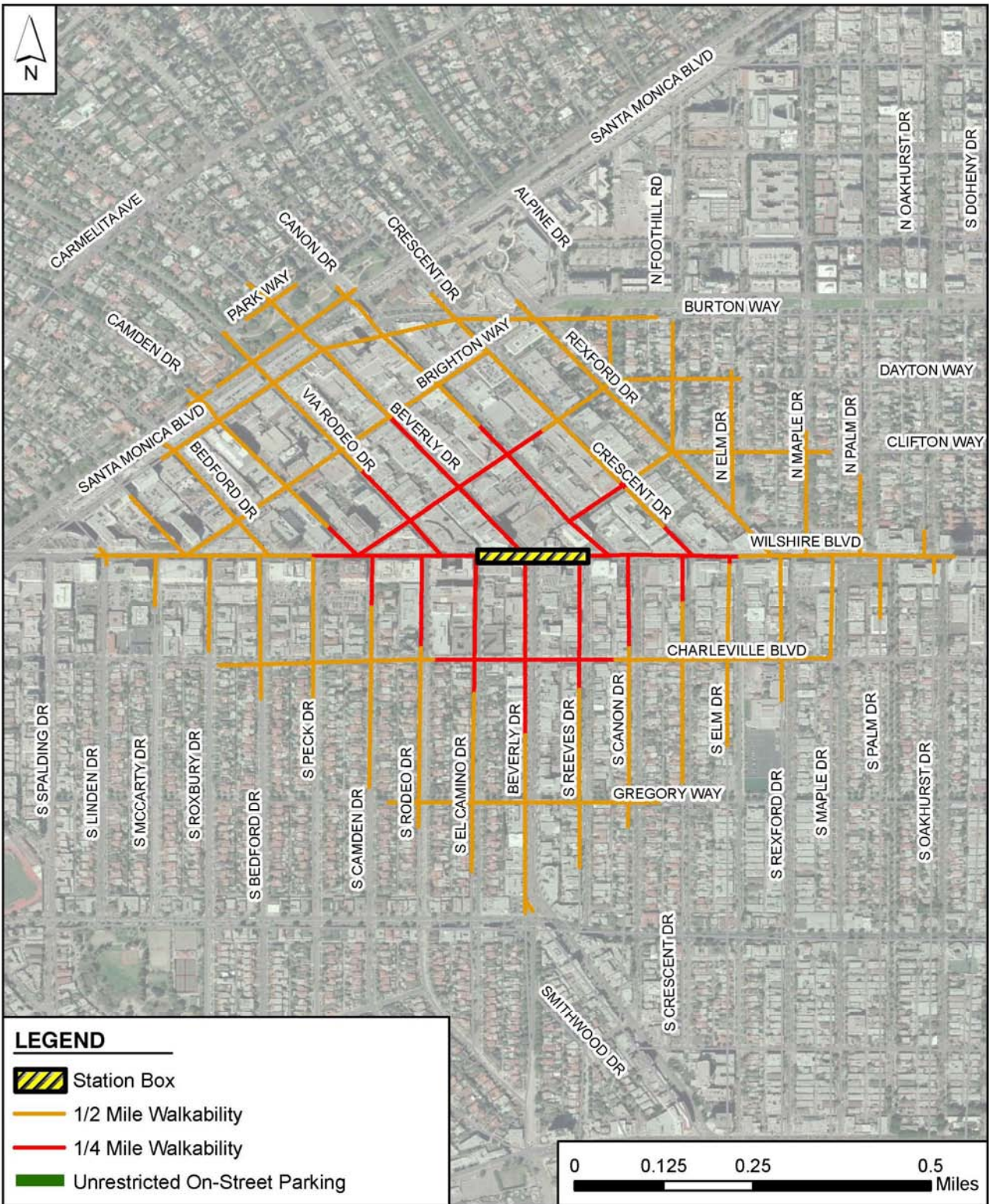


Figure 3-13. Unrestricted On-Street Parking—Wilshire/Rodeo Station

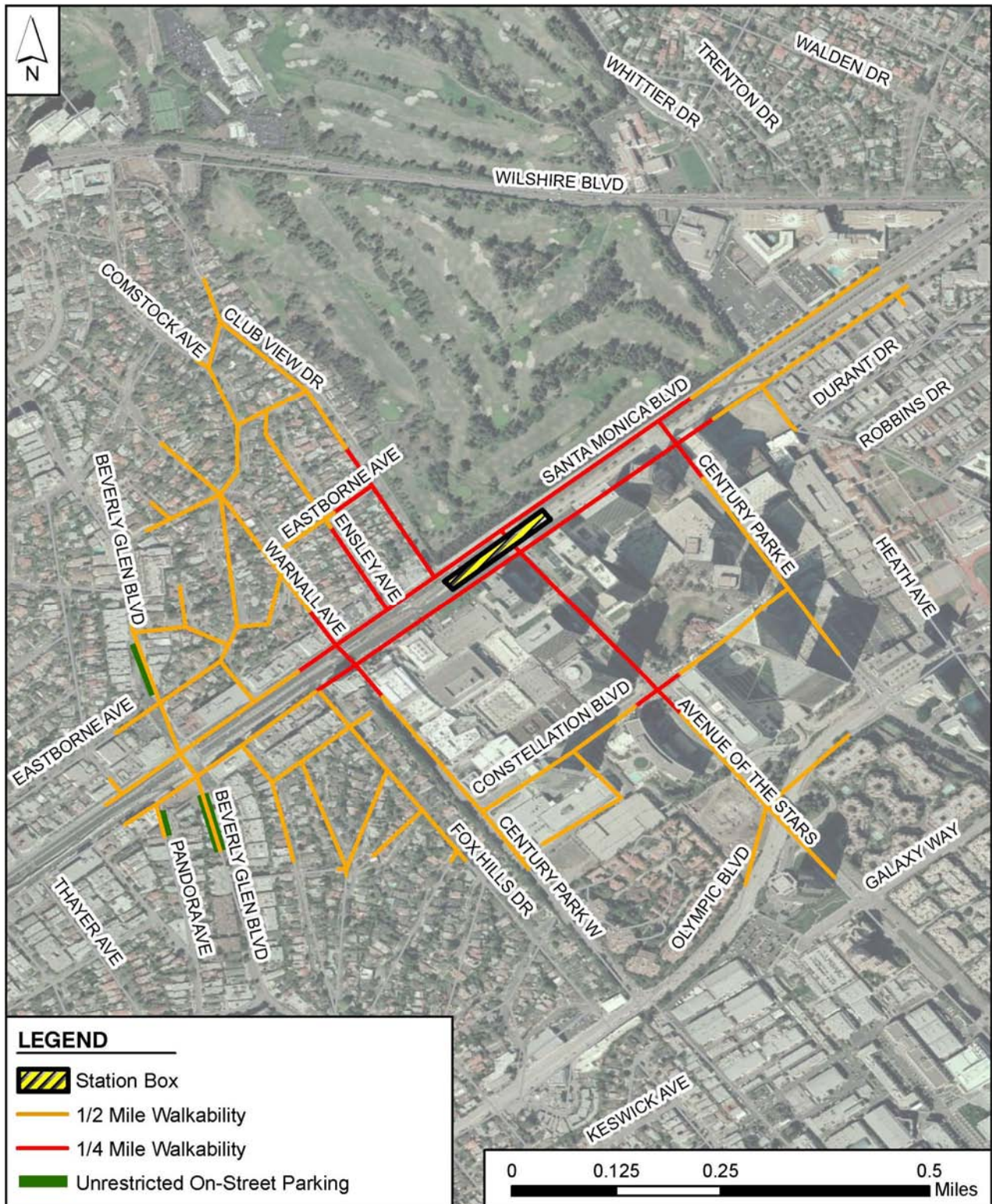


Figure 3-14. Unrestricted On-Street Parking—Century City Station

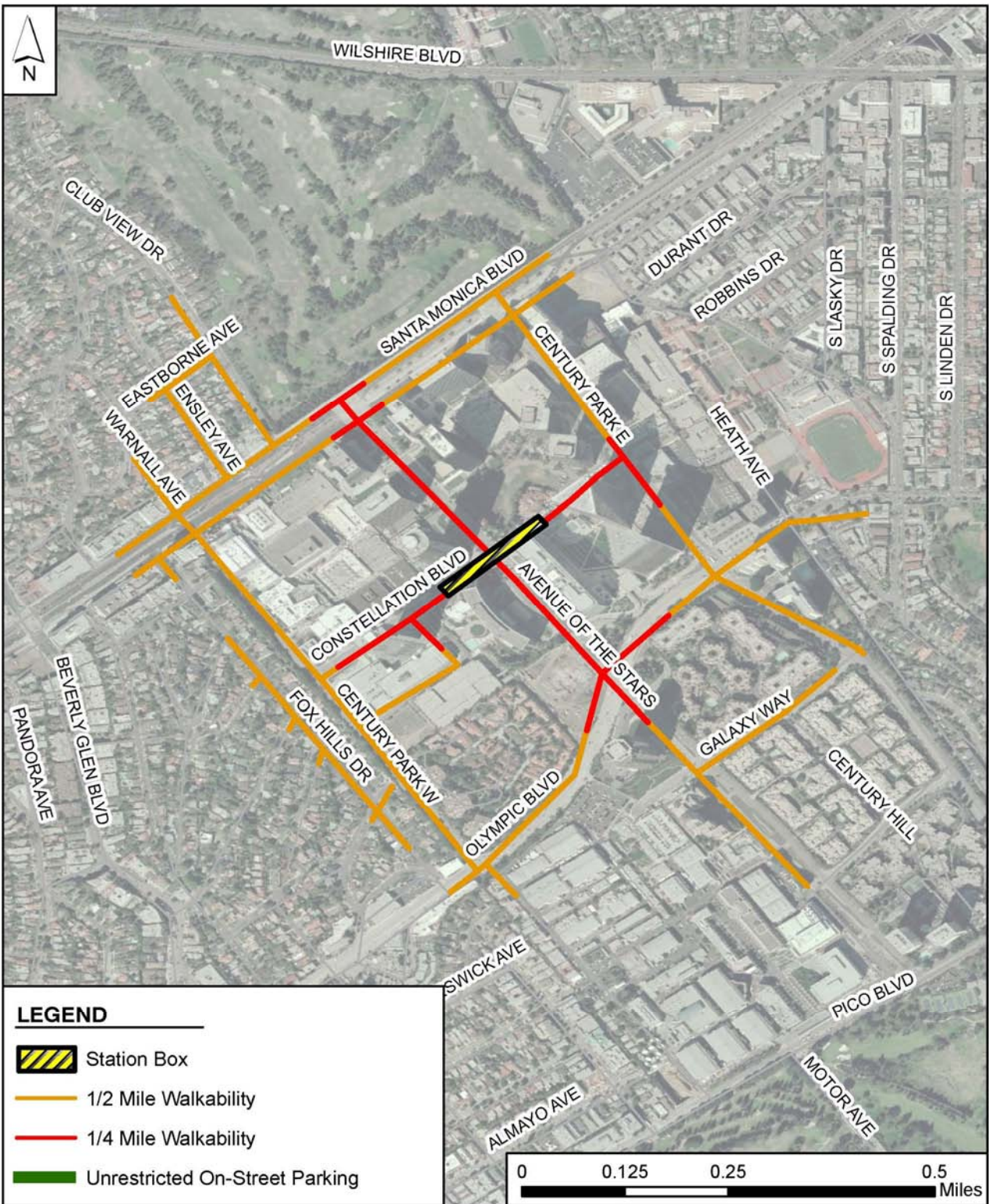


Figure 3-15. Unrestricted On-Street Parking—Century City Optional Station

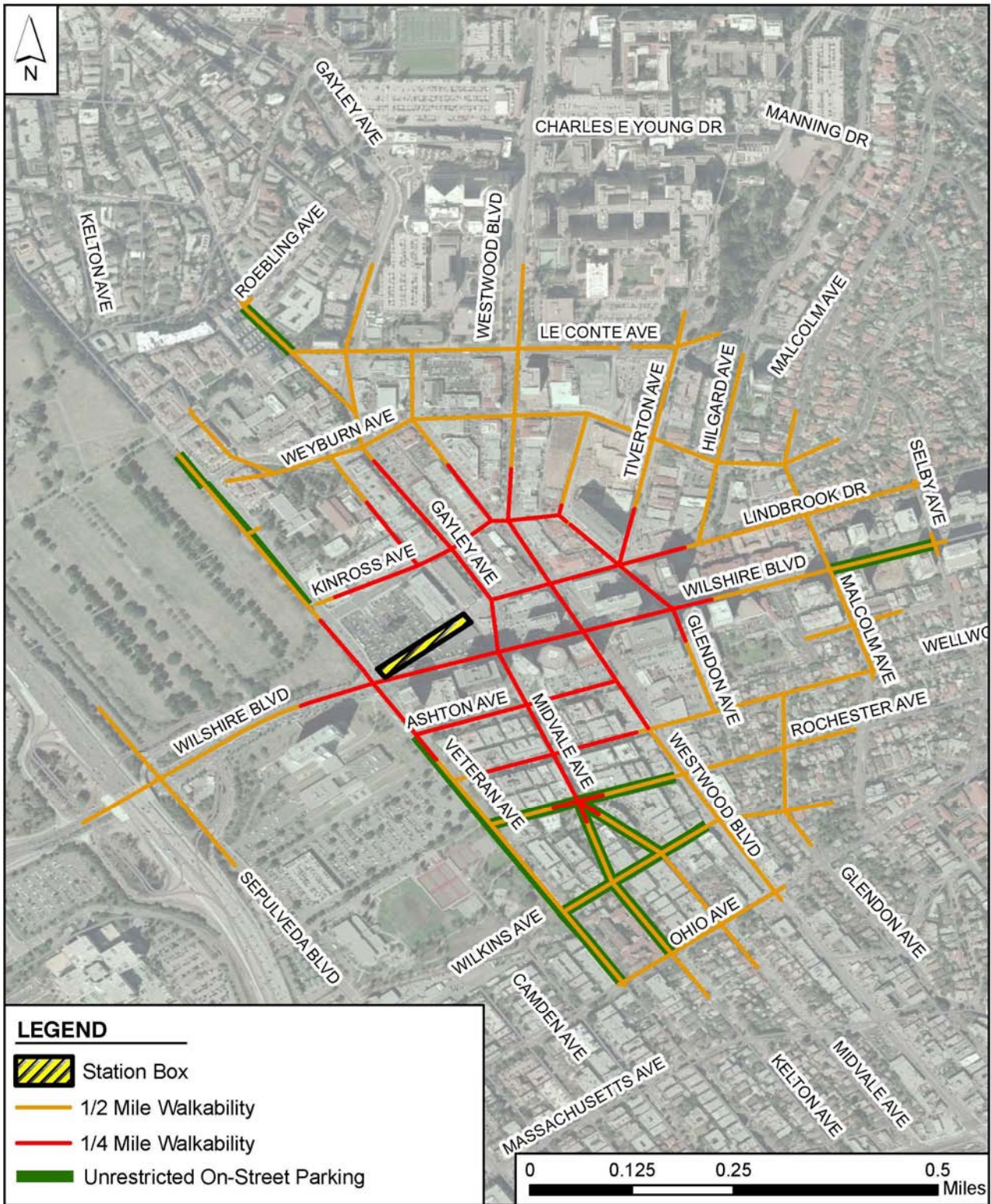


Figure 3-16. Unrestricted On-Street Parking—Westwood/UCLA Station

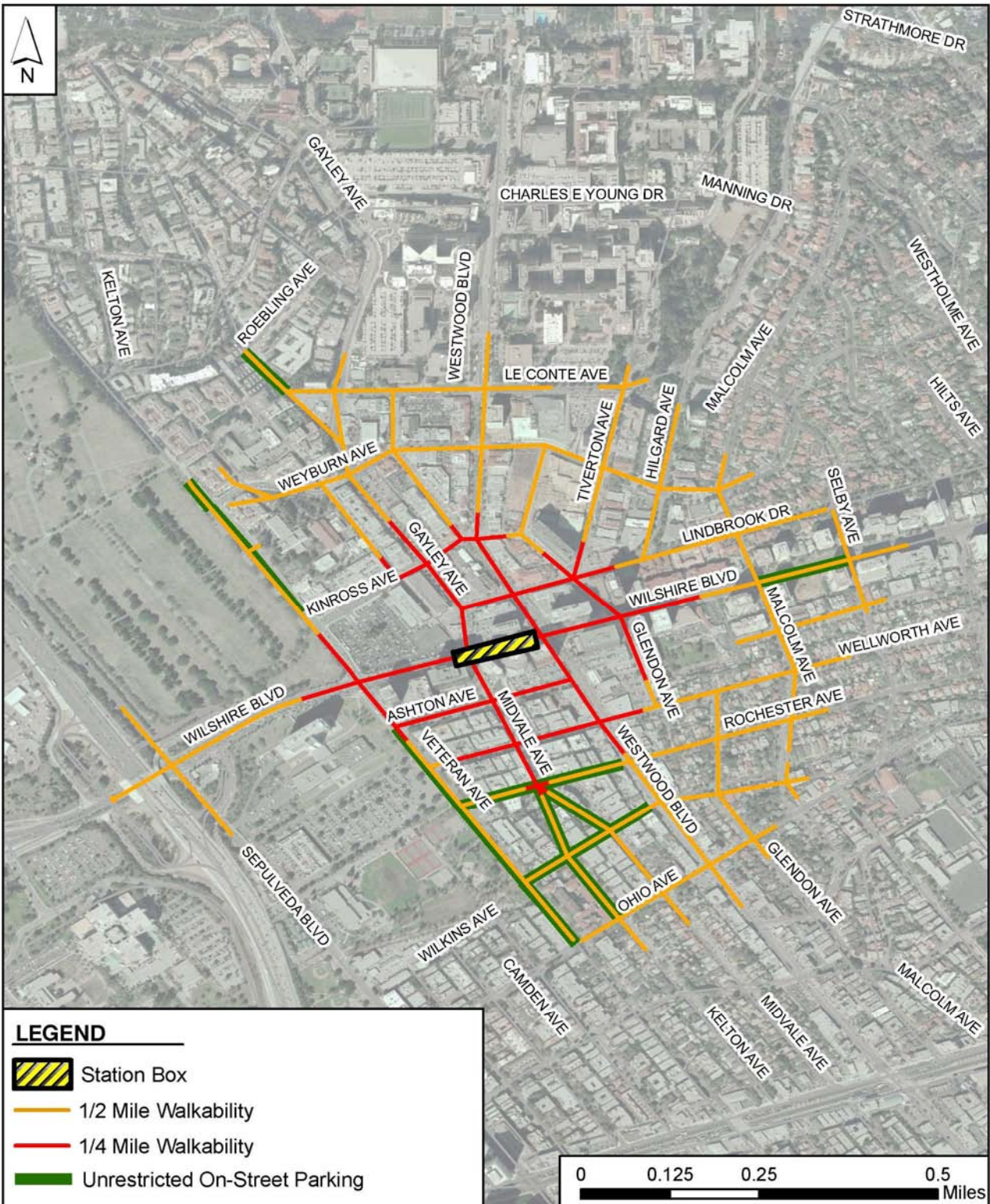


Figure 3-17 Unrestricted On-Street Parking—Westwood/UCLA Optional Station