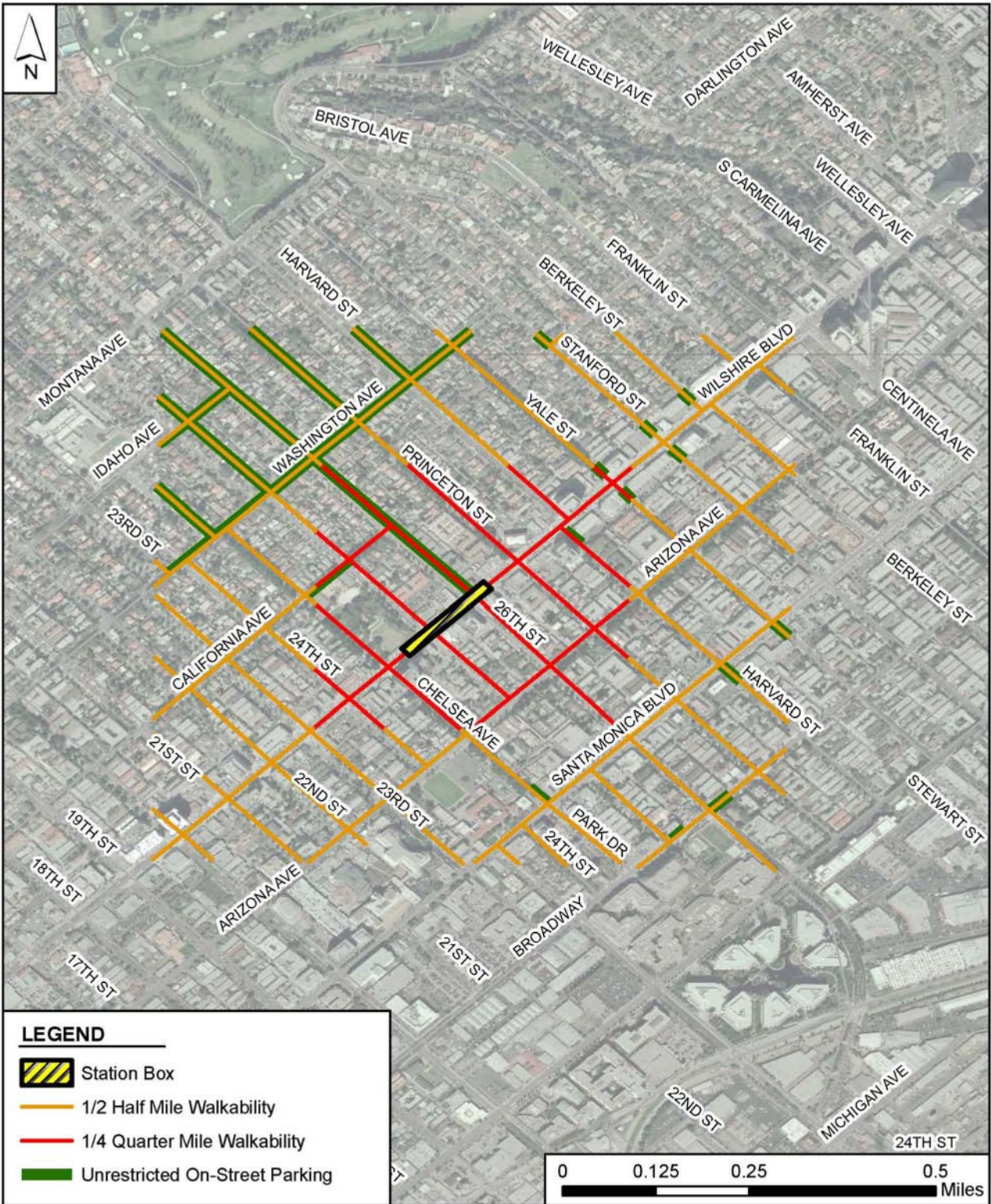




Figure 3-20. Unrestricted On-Street Parking—Wilshire/Bundy Station


 Figure 3-21. Unrestricted On-Street Parking—Wilshire/26th Station



- **Wilshire/16th Station**— As illustrated in Figure 3-22, unrestricted parking is provided on several blocks north of Wilshire Boulevard and a few blocks to the south. A variety of parking restrictions are in place on the remaining streets within a one-half mile walking distance of this station, including time-limit restrictions, peak-period restrictions, and residential permit restrictions. Parking meters with time-limit restrictions are installed along Wilshire Boulevard, the portions of the blocks closest to Wilshire Boulevard on north-south streets, and certain blocks of Arizona Avenue.
- **Wilshire/4th Station**—As illustrated in Figure 3-23, unrestricted parking is provided on some residential blocks north of California Avenue. Metered spaces with time-limit restrictions are installed on most of the remaining streets within a one-half mile walking distance of the potential station location, including Wilshire Boulevard, all blocks south of Wilshire Boulevard, and along Ocean Avenue.
- **Hollywood/Highland Station**—As illustrated in Figure 3-24, unrestricted parking is available on some blocks located between a one-quarter and one-half mile walking distance of this station. A variety of parking restrictions are in place on the remaining streets, including time-limit restrictions and peak-period restrictions. Parking meters with time-limit restrictions are installed along Hollywood Boulevard, Highland Avenue, La Brea Avenue, as well as on blocks of the smaller north-south and east-west streets adjacent to metered parking on the major streets.
- **Santa Monica/La Brea Station**—As illustrated in Figure 3-25, unrestricted parking is available on some blocks located between a one-quarter and one-half mile walking distance of this station. A variety of parking restrictions are in place on the remaining streets within a one-half mile walking distance of this station, including time-limit restrictions, and daily-restrictions. Parking meters with time-limit restrictions are installed along Santa Monica Boulevard and the portions of the blocks closest to Santa Monica Boulevard on north-south streets, and along La Brea Avenue and the portions of the blocks closest to La Brea Avenue Boulevard on east-west streets.
- **Santa Monica/Fairfax Station**—As illustrated in Figure 3-26, parking is generally unrestricted on most streets within a one-half mile walking distance of this potential station. A variety of parking restrictions are in place on the remaining streets within a one-half mile walking distance of this station, including time-limit restrictions, peak-period restrictions, and residential permit-restrictions. Parking meters with time-limit restrictions are installed along Santa Monica Boulevard and the portions of the blocks closest to Santa Monica Boulevard on north-south running streets, and Fairfax Avenue.
- **Santa Monica/San Vicente Station**—As illustrated in Figure 3-27, parking is generally unrestricted on most streets in the neighborhood to the northwest of the potential station location. A variety of parking restrictions are in place on the remaining streets within a one-half mile walking distance of this station, including time-limit restrictions, peak-period restrictions, daily restrictions, and residential permit-restrictions. Parking meters with time-limit restrictions are installed along Santa Monica Boulevard and the portions of the blocks closest to Santa Monica Boulevard on north-south running streets.

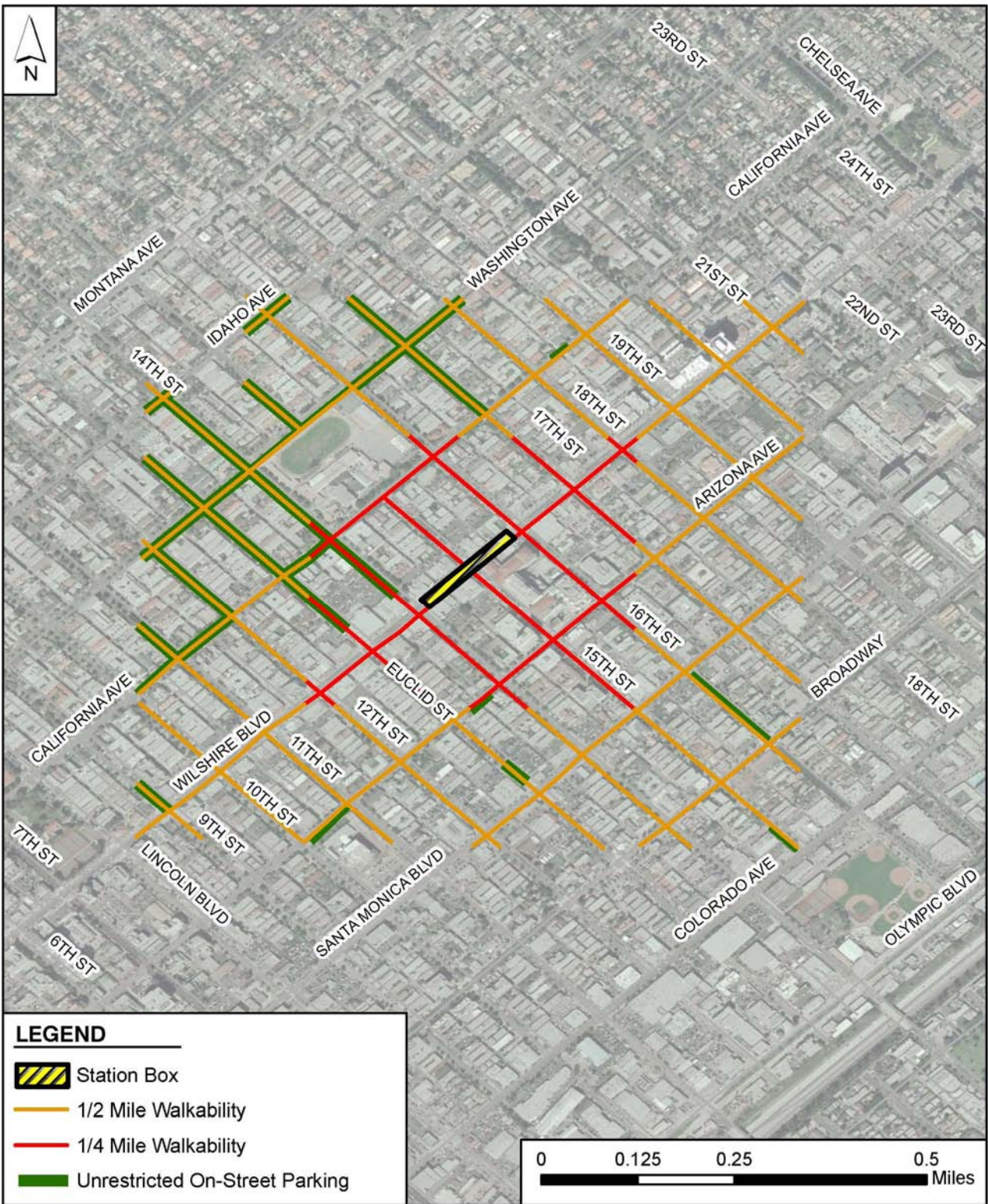

 Figure 3-22. Unrestricted On-Street Parking—Wilshire/16th Station



Figure 3-23. Unrestricted On-Street Parking—Wilshire/4th Station