



## 4.0 AFFECTED ENVIRONMENT

An inventory of parklands and other community facilities within the study area is provided in this section based on information provided in previous environmental documents, available maps and reports, direct contact with affected jurisdictions (see references), the land use (parklands, schools), community and neighborhood impacts, safety and security (police and fire), and Section 4(f) Technical Reports for this project. Data was collected from the General Plans and websites for the Cities of Los Angeles<sup>11</sup>, West Hollywood<sup>12</sup>, Beverly Hills<sup>13</sup>, Santa Monica<sup>14</sup>, as well as portions of unincorporated Los Angeles County<sup>15</sup>. In addition, spatial data and aerial maps were used to identify parklands and community facilities within the study area.

The overall project study area is located in western Los Angeles County and encompasses approximately 38 square miles. The study area is east-west oriented and includes portions of five jurisdictions: the Cities of Los Angeles, West Hollywood, Beverly Hills, Santa Monica, as well as portions of unincorporated Los Angeles County. The boundaries of the study area generally extend north to the base of the Santa Monica Mountains along Hollywood, Sunset and San Vicente Boulevards, east to the Metro Rail stations at Wilshire/Western and Hollywood/Highland, south to Pico Boulevard, and west to the Pacific Ocean.

The following is a discussion of the existing parks and community facilities. Parks and community facilities were inventoried within 0.5-mile on either side of the Build Alternative alignments (alignments) and those within 0.25-mile on either side of the alignments were further assessed to determine if any of the facilities would be directly or indirectly impacted by the proposed Build Alternatives. The inventory is shown on Figure 4-1 through Figure 4-5.

### 4.1 Parklands

Of the 16 parks and recreation facilities within 0.25-mile of the alignments, six are immediately adjacent to the alignments and are as follows:

- Hancock Park (Alternatives 1 through 5, MOS 1,2)
- Los Angeles Country Club (Alternatives 1 through 5 with Option 4 via Santa Monica)
- Douglas Park (Alternatives 3, 5)
- Reed Park (Alternatives 3, 5)
- Plummer Park (Alternatives 4, 5)
- West Hollywood Park (Alternatives 4, 5)

---

<sup>11</sup> <http://cityplanning.lacity.org>

<sup>12</sup> City of West Hollywood. 2004. General Plan, Section 1.0 Land Use and Urban Design; Section 2.0 Public Open Space Urban Design; Section 7.0 Education and Cultural; Section 8.0 Public Safety: Police and Fire; Section 9.0 Parks and Recreation.

<sup>13</sup> <http://www.beverlyhills.org>

<sup>14</sup> <http://www.shapethefuture2025.net>

<sup>15</sup> <http://planning.lacounty.gov>



## 4.2 Police Services

One police facility is within 0.25-mile of the alignments and immediately adjacent: the Los Angeles County Sheriff's Department West Hollywood Station (Alternatives 4, 5).

Per personal communication with staff at the Los Angeles County Sheriff's Department—West Hollywood Station,<sup>16</sup> typical response times are measured by following the “720 Rule” meaning that for calls the department deems priority calls, response times are no longer than 7 minutes, and for call the department deems routine calls, response times are no longer than 20 minutes. However, emergency calls are responded to between 30 seconds and 2 minutes. Per personal communication with staff at the at the Beverly Hills Police Department,<sup>17</sup> typical response times for what the department deems emergency calls are usually within 3 minutes. All other calls are responded to usually within 20 minutes. Personal communication with appropriate personnel at the Los Angeles Police Department located at 1358 Wilcox Avenue was attempted but no response was given. Therefore, response times for this police station were not obtained.

As indicated by the staff at the Los Angeles County Sheriff's Department and Beverly Hills Police Department, major road construction and/or road closures are made available to each station in advance. Therefore, if needed, alternate routes are taken to avoid major delays in response times.

## 4.3 Fire Services

Five fire stations are located within 0.25-mile of the alignments of which two are immediately adjacent to the alignments: the City of Los Angeles Fire Department Station 29 (Alternatives 1 through 5, MOS 1, 2) and Los Angeles County Fire Department Station 8 (Alternatives 4, 5).

Typical response times at these fire stations are generally between 2 minutes and 5 minutes to any point within each respective jurisdiction, depending on traffic conditions. As indicated by each Captain (see references), major road construction and/or road closures are made available to each station in advance. Therefore, if needed, alternate routes are taken to avoid major delays in response times.

---

<sup>16</sup>Personal communication between Glenn DeBerg and Sergeant Bowman at 1:25 pm on 04/09/10.

<sup>17</sup>Personal communication between Glenn DeBerg and Commander Goldman at 1:45 pm on 04/09/10.

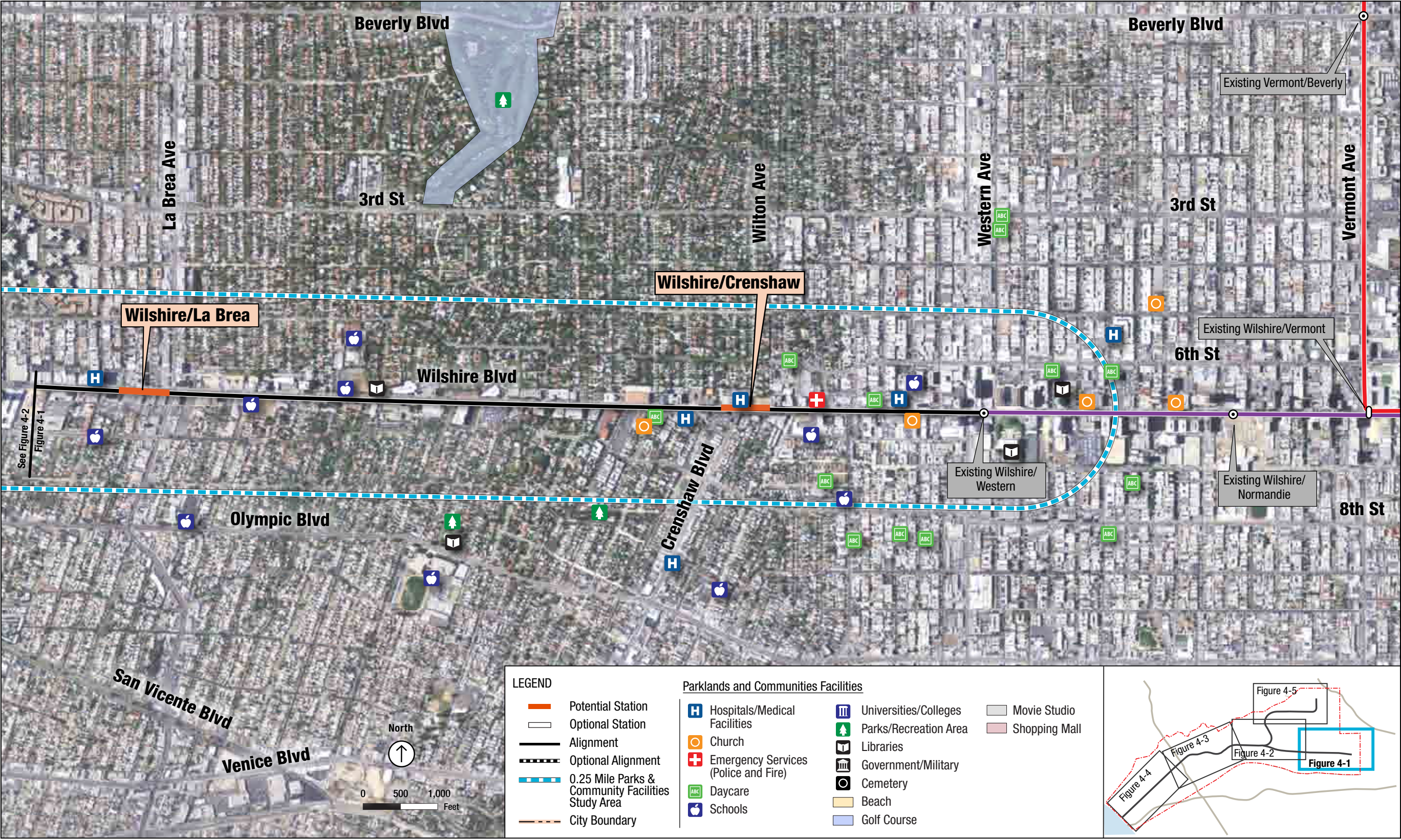


Figure 4-1. Final Parklands and Other Facilities (Wilshire/Crenshaw Station to Wilshire La Brea Station)

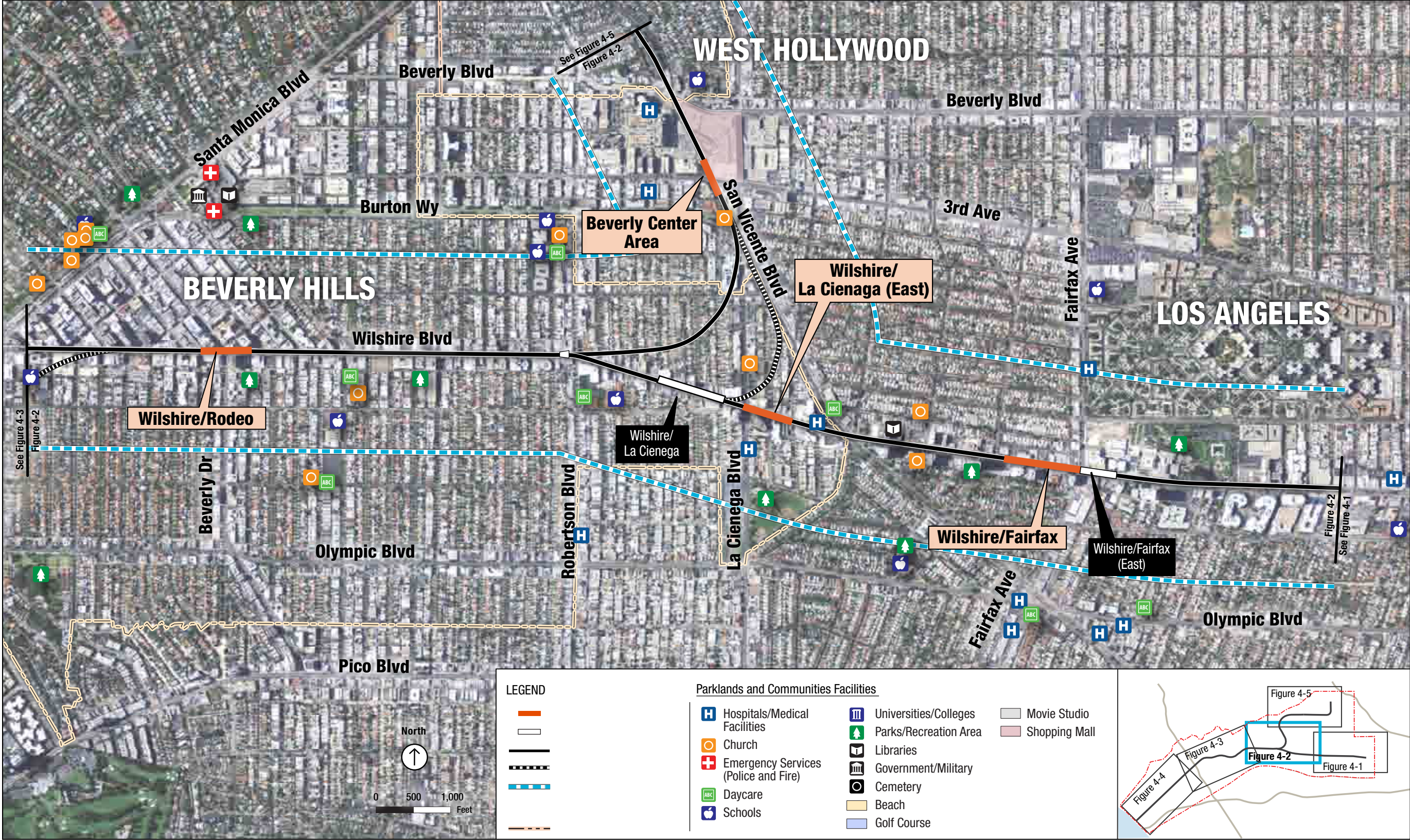


Figure 4-2. Final Parklands and Other Facilities (Wilshire/Fairfax Station to Wilshire/Rodeo Station)

WESTSIDE SUBWAY EXTENSION

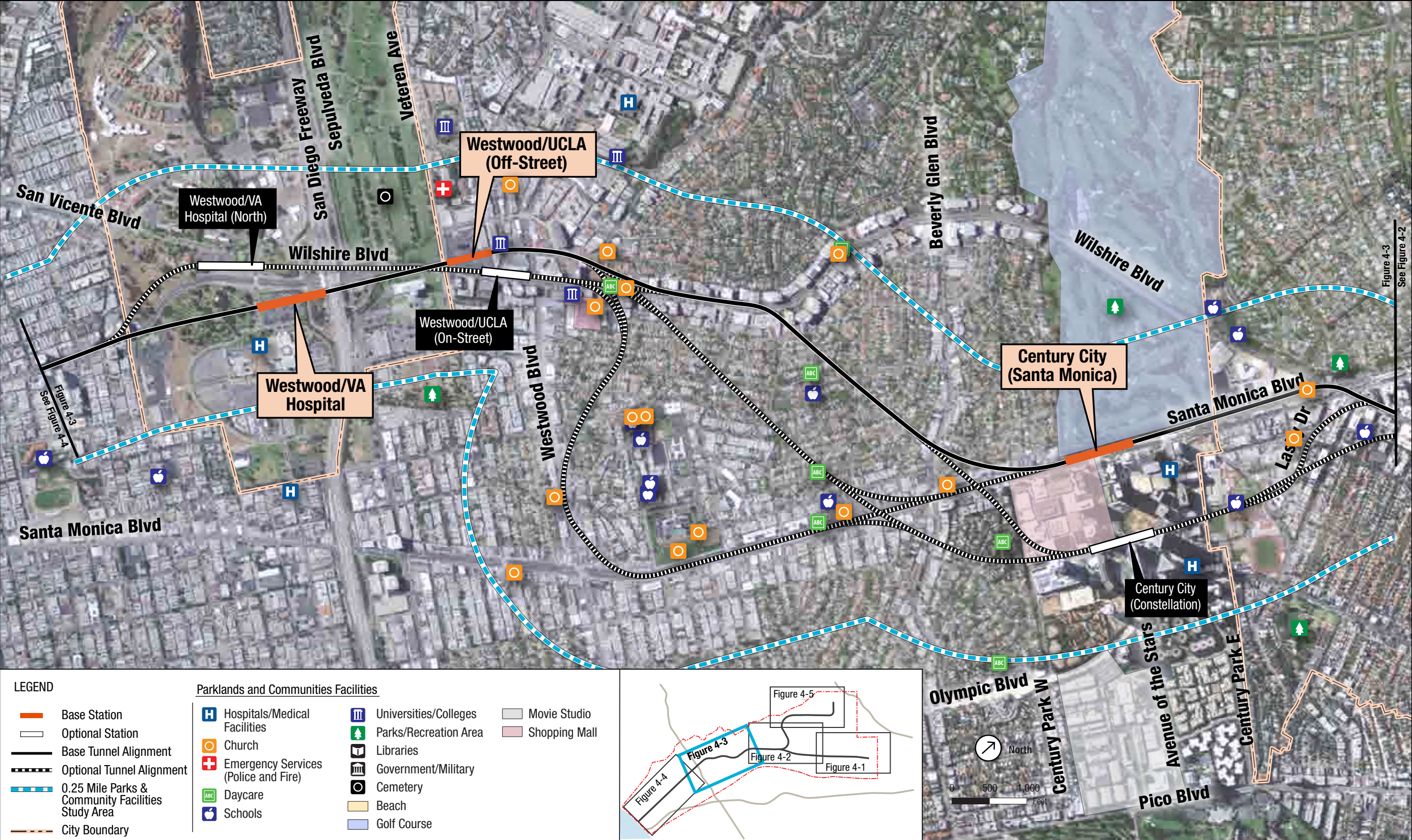


Figure 4-3. Final Parklands and Other Facilities (Century City Station to Westwood/VA Hospital Station)



Figure 4-4. Final Parklands and Other Facilities (Wilshire/Bundy Station to Wilshire/4th Station)



Figure 4-6. Final Parklands and Other Facilities (Hollywood/Highlands Station to Santa Monica/San Vicente Station)

WESTSIDE SUBWAY EXTENSION



#### **4.4 Schools (Public and Private, All Levels of Education including Pre-school through Trade and College)**

Eighty-two schools are located within 0.25-mile of the alignments. Twelve are immediately adjacent to the alignments as follows:

- Pre-school
  - ▶ Cassidy Pre-school (Alternatives 3,5)
  - ▶ Pilgrim Lutheran Pre-school (Alternatives 3,5)
  - ▶ Evergreen Child Care (Alternatives 1 through 5, MOS 1, 2)
  - ▶ Beverly Hills Montessori School (Alternatives 4,5)
  - ▶ L'Chaim Daycare (Alternatives 4,5)
  - ▶ Creative Center Pre-school (Alternatives 3, 5 with Option 4 via East Route)
- High Schools
  - ▶ Beverly Hills High School (Alternatives 1 through 5, MOS 2)
- Private Schools
  - ▶ St. James Episcopal School (Alternatives 1 through 5, MOS 1, 2)
  - ▶ New Los Angeles Charter School (Alternatives 1 through 5, MOS 1, 2)
  - ▶ Concord High School (Alternatives 3, 5)
- University or Trade Schools
  - ▶ University of California at Los Angeles (UCLA) (Alternatives 1 through 5)
  - ▶ University of Santa Monica (Alternatives 3,5)
  - ▶ The Chicago School of Professional Psychology—Westwood Campus (Alternatives 1 through 5 with Westwood/UCLA off-Street Station)
  - ▶ Emperor's College of Traditional Oriental Medicine (Alternatives 3,5)
  - ▶ Concord Law School (Alternatives 1 through 5)

#### **4.5 Libraries**

Four libraries are located within 0.25-mile of the alignments. One is immediately adjacent to the alignment: Jewish Community Library of Los Angeles (Alternatives 1 through 5, MOS 2).

#### **4.6 Medical Facilities (hospitals and health centers)**

Four hospitals and health centers are located within 0.25-mile of the alignments. Of these, three are immediately adjacent to an alignment.

- Cedars Sinai Medical Center (Alternatives 1 through 5)
- Veterans Affairs West Los Angeles Healthcare Center (Alternatives 2 through 5)
- Santa Monica UCLA Medical Center & Orthopedic Hospital (Alternatives 3, 5)





## 4.7 Religious Institutions

Eighty-seven religious facilities are located within 0.25-mile of the alignments. Twenty-six are immediately adjacent to an alignment as follows:

- Church of Saint Augustine By the Sea (Alternatives 4, 5)
- Nichiren Shoshu of America Temple (Alternatives 4, 5)
- Pilgrim Lutheran Church (Alternatives 4, 5)
- Wilshire United Methodist Church (Alternatives 1 through 5, MOS 1, 2)
- Saint James Episcopal Church (Alternatives 1 through 5, MOS 1, 2)
- Westwood Presbyterian Church (Alternatives 1 through 5)
- Soka Gakkai International (Alternatives 4, 5)
- Living Torah Center (Alternatives 4, 5)
- Kahal Joseph Congregation (Alternatives 1 through 5 with Option 4 via Central and West Routes)
- Oasis Christian Church (Alternatives 1 through 5, MOS 1, 2)
- Wilshire Boulevard Temple (Alternatives 1 through 5, MOS 1, 2)
- Grace Christian Church (Alternatives 1 through 5, MOS 1, 2)
- University Bible Church (Alternatives 1 through 5)
- Los Angeles Church of Religious Science (Alternatives 1 through 5, MOS 2)
- Korean Catholic Renewal Movement (Alternatives 1 through 5, MOS 1, 2)
- Ku In Holy Presbyterian Church (Alternatives 1 through 5, MOS 1, 2)
- LA Jesus Village Church (Alternatives 1 through 5, MOS 1, 2)
- Church of God Word (Alternatives 1 through 5, MOS 1, 2)
- California Calvary Church (Alternatives 1 through 5, MOS 1, 2)
- Ha Na Korean Wesleyan Church (Alternatives 1 through 5, MOS 1, 2)
- Song One Church (Alternatives 1 through 5, MOS 1, 2)
- The Church of Joy (Alternatives 1 through 5, MOS 1, 2)
- New Life (Alternatives 1 through 5, MOS 1, 2)
- Los Angeles International Church of Christ (Alternatives 1 through 5, MOS 1, 2)
- Vision Full Gospel (Alternatives 1 through 5, MOS 1, 2)
- Our Lady of Mt Lebanon (Alternatives 4, 5)



### 4.8 Cemeteries

Two cemeteries are located within 0.25-mile of the alignments: the Los Angeles National Cemetery (Alternatives 2 through 5) and Pierce Brothers Cemetery (Alternatives 1 through 5, MOS 1, 2) in West Los Angeles. These cemeteries are immediately adjacent to the alignment.

### 4.9 Social Services (Adult Day Care, Senior Centers, Convalescent)

Twenty-four day care and senior centers are located within 0.25-mile of the alignments. Of these, six are immediately adjacent to an alignment as follows:

- Carmelite Elder Care Management (Alternatives 1 through 5, MOS 2)
- Comfort Keepers (Alternatives 1 through 5, MOS 1, 2)
- Impact Clinical Trials (Adult Daycare) (Alternatives 1 through 5, MOS 1, 2)
- Family Home Healthcare (Alternatives 1 through 5, MOS 1, 2)
- Wilshire Adult Day Healthcare (Alternatives 1 through 5, MOS 1, 2)
- Partners Adult Day Health Center (Alternatives 4, 5)

**Table 4-1. Summary of the Number of Parklands and Community Facilities within 0.25-mile of the Westside Corridor<sup>18</sup>**

Facility	Project Alternatives				
	Alt. 1— Westwood/ UCLA Extension	Alt. 2— Westwood/VA Hospital Extension	Alt. 3—Santa Monica Extension	Alt. 4— Westwood/VA Hospital Extension plus West Hollywood Extension	Alt. 5—Santa Monica Extension plus West Hollywood Extension
Parklands and Other Recreation	5	6	10	12	16
Police Services	0	0	0	1	1
Fire Services	2	2	3	4	5
Public Elementary Schools	6	6	8	7	9
Public Middle Schools	2	2	3	2	3
Public High Schools	1	1	3	2	4
Colleges, Universities & Trade Schools	5	5	6	5	6
Private Schools	7	7	17	14	24
Libraries	2	2	3	3	4
Religious Facilities	48	48	80	59	87
Hospitals	0	1	3	2	4
Convalescent	8	8	18	14	24
Cemeteries	1	2	2	2	2
Day-Care and Pre-School	14	14	24	27	37

Beverly Hills Police Department and Los Angeles Police Department stations are not within 0.25-mile of the project and are therefore not included in this table; however, these departments serve the project area.

<sup>18</sup> See Tables 5-1 and 5-3 for facilities within 0.25 miles on either side of MOS alignments



Table 4-2. Parklands and Recreation Resources within 0.25-mile of the Westside Corridor

Sheet No., ID No.	Name	Type of Facility	Approx. Size (acres)	Location	Regulatory Agency	Proximity to Alignment (miles)
1, 189	Santa Monica State Beach	Beach	179.98	Pacific Coast Highway & Santa Monica Boulevard (Santa Monica)	California State Parks. Operated by the City of Santa Monica	.04
5, 174	Yucca Park	Park	0.90	North Las Palmas Avenue & Yucca Street (Los Angeles)	City of Los Angeles	.19
5, 175	De Longpre Park	Park	3.45	De Longpre Avenue & North Cherokee Avenue (Los Angeles)	City of Los Angeles	.19
5, 176	Plummer Park	Park	15.49	Fountain Avenue & North Vista Street (West Hollywood)	City of West Hollywood	.00
5, 177	Kings Road Park	Park	0.90	North Kings Road & Romaine Street (West Hollywood)	City of West Hollywood	.10
5, 179	West Hollywood Park	Park	8.70	Santa Monica Boulevard & North San Vicente Boulevard (West Hollywood)	City of West Hollywood	.00
3, 180	Beverly Gardens Park	Park	67.96	Wilshire Boulevard & Santa Monica Boulevard (Beverly Hills)	City of Beverly Hills	.00
3, 182	Oakhurst Park	Park	0.70	Wilshire Boulevard & Oakhurst Drive (Beverly Hills)	City of Beverly Hills	.04
2, 183	Hancock Park	Park	27.20	West 6 <sup>th</sup> Street & Curson Avenue (Mid-Wilshire, LA County)	County of Los Angeles. Maintained and operated by the County Department of Museum of Natural History	.00
2, 185	La Cienega Park	Park	22.40	Gregory Way & La Cienega Boulevard (Beverly Hills)	City of Beverly Hills	.16
2, 186	Westwood Park	Park	20.06	Wilshire Boulevard & South Sepulveda Boulevard (Los Angeles)	City of Los Angeles	.21
1, 187	Douglas Park	Park	4.5	Wilshire Boulevard & Chelsea Avenue (Santa Monica)	City of Santa Monica	.00
1, 188	Palisades Park	Park	26.04	Ocean Avenue & Santa Monica Boulevard	City of Santa Monica	.10
1, 190	Reed Park	Park	5.3	Wilshire Boulevard & 7 <sup>th</sup> Street (Santa Monica)	City of Santa Monica	.00
5, 178	Poinsettia Recreation Center	Recreation Center	6.76	North Poinsettia Place & Willoughby Avenue (Hollywood/Los Angeles)	City of Los Angeles	.12
2, 181	Los Angeles Country Club	Golf Course	16	Wilshire Boulevard & Comstock Avenue (Los Angeles)	Private Country Club	.00

**Table 4-3. Public Services Within 0.25-mile of the Westside Corridor**

Sheet No., ID No.	Station	Address	Area of Project Served	Proximity to Alignment (miles)
<b>Police Services</b>				
5, 171	Los Angeles County Sheriff's Department—West Hollywood Station	780 North San Vicente Boulevard, West Hollywood	West Hollywood	.00
<b>Fire Services</b>				
4, 108	City of Los Angeles Fire Department Station 29	4029 Wilshire Boulevard, Los Angeles	Wilshire Center and Hancock Park	.00
1, 43	Santa Monica Fire Department Fire Stations 3 & 4	1302 19 <sup>th</sup> Street, Santa Monica Boulevard	City of Santa Monica	.18
5, 137	Los Angeles County Fire Department Station 8	7643 Santa Monica Boulevard, West Hollywood	Unincorporated Los Angeles and West Hollywood	.00
5, 168	Los Angeles County Fire Department Station 7	864 San Vicente Boulevard, West Hollywood	Unincorporated Los Angeles and West Hollywood	.13
2, 63	Los Angeles Fire Department Station 37	1090 Veteran Avenue, Los Angeles, CA 90024	Westwood and the Western UCLA Campus	.18
<b>Libraries</b>				
5, 120	Los Angeles Public Library—West Hollywood Branch	715 North San Vicente Boulevard, Los Angeles, CA 90069	City of West Hollywood	.00
4, 112	Pio Pico Koreatown Branch Library	694 South Oxford Avenue, Los Angeles, CA 90005	City of Los Angeles (Mid-Wilshire Area)	.11
1, 13	Santa Monica Public Library	601 Santa Monica Boulevard, Santa Monica, CA 90401	City of Santa Monica	.23
3, 92	Jewish Community Library of Los Angeles—Peter M. Kahn Memorial	6505 Wilshire Boulevard, Los Angeles, CA 90036	County of Los Angeles	.00



Table 4-4. Other Community Facilities within 0.25-mile of the Westside Corridor

Sheet No., ID No.	Name	Location	Proximity to Alignment (miles)
<b>Educational Facilities</b>			
<b>Day Care and Pre-Schools</b>			
1, 37	Beth Shir Sholom Early Childhood Center (Pre-school)	1827 California Ave. Santa Monica, CA 90403	.13
1, 51	Cassidy Pre-school	2122 Wilshire Blvd. Santa Monica, CA 90403	.00
5, 132	Fountain Day School	1128 N Orange Grove Ave. West Hollywood, CA 90046	.04
5, 125	Holloway Pre-school	8510 Holloway Drive Los Angeles, CA 90069	.07
5, 145	Sunset Montessori Pre-school	1432 N Sycamore Ave Los Angeles, CA 90028	.22
5, 140	West Hollywood Pre-school	7377 Santa Monica Blvd. West Hollywood, CA 90046	.18
2, 76	Westwood United Methodist Pre-school	10497 Wilshire Blvd. Los Angeles CA 90024	.23
4, 167	Wilshire Pre-school	711 S. Plymouth Blvd. Los Angeles, CA 90005	.02
1, 1	First Presbyterian Nursery	1220 2nd. St. Santa Monica, CA 90401	.03
1, 10	Santa Monica YMCA Child Development	1332 6th St. Santa Monica, CA 90401	.17
1, 19	Gan Israel Pre-School	1341 9th St. Santa Monica, CA 90401	.18
1, 20	Trinity Baptist Church Pre-School	1019 California Ave. Santa Monica, CA 90403	.13
1, 30	Lincoln Child Development	1532 California Ave. Santa Monica, CA 90403	.13
1, 32	Pilgrim Lutheran Pre-School	1730 Wilshire Blvd. Santa Monica, CA 90403	.00
1, 38	Garden of Angels Pre-School	1009 18th St. Santa Monica, CA 90403	.15
1, 53	Ulrich Daycare	1305 23rd. St. Santa Monica, CA 90404	.14
2, 72	Westwood Presbyterian School	10822 Wilshire Blvd. Los Angeles, CA 90024	.00
2, 73	Montessori Discovery Garden	10551 Holman Ave. Los Angeles, CA 90024	.23
2, 77	Century City Kids Club	1908 Fox Hills Dr. Los Angeles, CA 90025	.18
3, 84	Hebrew Nessah Nursery School	142 S. Rexford Dr. Beverly Hills, CA 90212	.07
3, 86	Gan Yaffa Pre-School	177 S. Robertson Blvd. Beverly Hills, CA 90211	.11
3, 90	Montessori Children's World	650 S. San Vicente Blvd. Beverly Hills, CA 90048	.05



Table 4-4. Other Community Facilities within 0.25-mile of the Westside Corridor (continued)

Sheet No., ID No.	Name	Location	Proximity to Alignment (miles)
4, 106	Wilton Place Children's Center	4030 Leeward Ave. Los Angeles, CA 90005	.19
4, 109	St. James Pre-School	4270 W. 6th St. Los Angeles, CA 90020	.12
4, 110	Evergreen Child Care	3960 Wilshire Blvd. Los Angeles, CA 90010	.00
4, 116	Wilshire Smiling Tree Pre-School and Kindergarten	611 S. Hobart Blvd. Los Angeles, CA 90005	.14
5, 123	West Hollywood Daycare Pre-School	723 Huntley Dr. West Hollywood, CA 90069	.18
5, 127	Laurel Children's Center	8023 Willoughby Ave. West Hollywood, CA 90046	.25
5, 129	ABC Little School: West Hollywood	927 N. Fairfax Ave. West Hollywood, CA 90046	.22
5, 130	Beverly Hills Montessori School	1105 N. Laurel Ave. West Hollywood, CA 90046	.00
5, 135	L' Chaim Daycare	7636 Santa Monica Blvd. West Hollywood, CA 90046	.00
5, 138	West Hollywood Children's Academy	1030 N. Vista St. West Hollywood, CA 90046	.10
5, 142	Gardner Little School	1226 N. Gardner St. West Hollywood, CA 90046	.17
5, 143	The Walther School	1246 N. Gardner St. West Hollywood, CA 90046	.20
5, 152	The Canyon Co-OP School	1820 N. Las Palmas Ave. Los Angeles, CA 90028	.24
2, 245	Creative Center Preschool	10547 Santa Monica Blvd. Los Angeles, CA 90025	.00
3, 247	Beverly Hills Presbyterian Pre-school	505 North Rodeo Drive Beverly Hills, CA 90210	.25
<b>Elementary Schools</b>			
3, 81	Beverly Vista Elementary School	Charleville Boulevard & South Rexford Drive	.19
1, 60	Brockton Avenue Elementary School	Brockton Avenue & Texas Avenue	.23
2, 74	Fairburn Avenue Elementary School	Fairburn Avenue & Rochester Avenue	.01
3, 87	Horace Mann Elementary School	South Hamel Drive & Charleville Boulevard	.09
5, 128	Laurel Elementary School	North Laurel Avenue & Willoughby Avenue	.22
4, 153	Los Angeles Elementary School	Ingraham Street & South Norton Avenue	.07
1, 54	McKinley Elementary School	Santa Monica Boulevard & 24th Street	.23
4, 107	Wilton Place Elementary School	South Wilton Place & West 8th Street	.23
2, 246	El Rodeo Elementary School	605 North Whittier Drive Beverly Hills, CA 90210	.25
<b>Middle Schools</b>			
4, 102	Burroughs Middle School	South McCadden Place between Wilshire Boulevard & West 6 <sup>th</sup> Street	.13
1, 26	Lincoln Middle School	California Avenue & 14 <sup>th</sup> Street	.17



Table 4-4. Other Community Facilities within 0.25-mile of the Westside Corridor (continued)

Sheet No., ID No.	Name	Location	Proximity to Alignment (miles)
2, 242	Ralph Waldo Emerson Middle School	1650 Selby Avenue Los Angeles, CA 90024	.20
<b>Senior High Schools</b>			
2, 79	Beverly Hills High School	Moreno Drive & Heath Avenue	.03
1, 23	Olympic High School	721 Ocean Park Blvd. Santa Monica, CA 90405	.18
5, 147	Hollywood Senior High School	North Highland Avenue & West Sunset Boulevard	.00
1, 61	University Senior High School	Texas Avenue & South Westgate Avenue	.21
<b>Private Schools</b>			
1, 18	Saint Monica Catholic High School	Washington Avenue & Lincoln Boulevard	.21
1, 156	Pacifica Christian High School	Lincoln Avenue & California Avenue	.03
1, 157	New Roads Middle School	Lincoln Avenue between Wilshire Boulevard & Arizona Avenue	.15
3, 95	Cathedral Chapel School	South Cochran Avenue & West 8 <sup>th</sup> Street	.13
5, 133	Saint Ambrose School	North Fairfax Avenue & Fountain Avenue	.16
4, 164	Saint James Episcopal School	Wilshire Boulevard & South St. Andrews Place	.00
1, 15	Saint Monica Parochial School	California Avenue & 7th Street	.17
1, 3	Delphi Academy of Santa Monica	4th Street between Wilshire Boulevard & Arizona Avenue	.04
5, 148	Blessed Sacrament School	On Sunset Boulevard between North Las Palmas Avenue & Cassil Place	.16
1, 49	Montessori School	West Sunset Boulevard between North Highland Avenue & North Cahuenga Boulevard	.18
2, 159	Good Shepherd Catholic School	South Linden Drive & Charleville Boulevard	.04
5, 144	Hollywood Schoolhouse	North Highland Avenue & Fountain Avenue	.00
3, 118	Maimonides Academy	Huntley Drive & Rosewood Avenue	.09
5, 160	Pacific Hills School	Holloway Drive between Hancock Avenue & Westmount Drive	.17
4, 161	Wilshire Private School	Wilshire Boulevard & South Longwood Avenue	.00
5, 154	Larchmont Charter School—West Hollywood	North Fairfax Avenue & Fountain Avenue	.20
4, 155	New Los Angeles Charter School	5100 Wilshire Boulevard, Los Angeles, CA 90036	.00
1, 237	Saint Monica Elementary School	1039 7th Street, Santa Monica, CA 90403	.15
1, 238	Concord High School	1831 Wilshire Boulevard Santa Monica, CA 90403	.00
1, 240	Lighthouse Christian Academy	1424 Yale Street Santa Monica, CA 90405	.25
1, 241	Lighthouse Church School	1220 20th Street Santa Monica, CA 90404	.04
2, 243	Saint Paul the Apostle School	1536 Selby Avenue Los Angeles, CA 90024	.12
5, 250	The Oaks School	6817 Franklin Ave. Los Angeles, CA 90028	.19
5, 251	Green School of Hollywood	1547 North McCadden Place Los Angeles, CA 90028	.05



Table 4-4. Other Community Facilities within 0.25-mile of the Westside Corridor (continued)

Sheet No., ID No.	Name	Location	Proximity to Alignment (miles)
<b>College or Trade Schools</b>			
2, 162	The Chicago School of Professional Psychology—Westwood Campus	Gayley Avenue & Lindbrook Drive	.00
1, 169	University of Santa Monica	Wilshire Boulevard & 21st Street	.00
2, 170	University of California Los Angeles (UCLA)	405 Hilgard Avenue, Los Angeles	.00
1, 239	Emperor’s College of Traditional Oriental Medicine	1807 Wilshire Blvd. Santa Monica, CA 90403	.00
2, 244	Concord Law School	10866 Wilshire Blvd Los Angeles, CA 90024	.00
1, 248	Cal America Education Institute	3700 Wilshire Boulevard, Los Angeles, CA 90010	.00
<b>Religious Facilities</b>			
3, 163	All Saints Episcopal Church	Santa Monica Boulevard & North Camden Drive	.25
1, 40	Beth Sholom Temple	California Avenue & 19 <sup>th</sup> Street	.13
1, 25	Central Assembly of God Church	Arizona Avenue & 14 <sup>th</sup> Street	.16
1, 6	Church of Christ	California Avenue & 4 <sup>th</sup> Street	.16
1, 5	Church of Saint Augustine By the Sea	Wilshire Boulevard & 4 <sup>th</sup> Street	.00
3, 80	Church of the Good Shepherd	North Bedford Drive & Park Way	.17
1, 36	Church of the Nazarene	Washington Avenue & 18 <sup>th</sup> Street	.25
5, 150	First Baptist Church	North Las Palmas Avenue & Selma Avenue	.16
1, 12	First Christian Church	Arizona Avenue & 6 <sup>th</sup> Street	.12
1, 8	First Church of Christ Scientist	Arizona & 5 <sup>th</sup> Street	.11
5, 151	First United Methodist Church	Franklin Avenue & North Highland Avenue	.19
1, 24	First United Methodist Church of Santa Monica	Washington Avenue & 11 <sup>th</sup> Street	.22
1, 9	Nichiren Shoshu of America Temple	Wilshire Boulevard & 6 <sup>th</sup> Street	.00
1, 34	Pilgrim Lutheran Church	Wilshire Boulevard & 17 <sup>th</sup> Street	.00
5, 134	Saint Ambrose Catholic Church	North Fairfax Avenue & Fountain Avenue	.22
4, 115	Saint Basils Roman Catholic Church	South Kingsley Drive & Wilshire Boulevard	.17
1, 16	Saint Monica Catholic Church	California Avenue & 7 <sup>th</sup> Street	.15
1, 41	Santa Monica Seventh Day Adventist Church	Arizona Avenue & 19 <sup>th</sup> Street	.07
1, 59	The Church of Jesus Christ of Latter Day Saints	Centinela Avenue & Arizona Avenue	.12
1, 44	The Lighthouse Church	20th Street & Wilshire Boulevard	.00
1, 22	Trinity Baptist Church	California Avenue & 10 <sup>th</sup> Street	.15
1, 35	Unitarian Community Church	Arizona Avenue & 18 <sup>th</sup> Street	.13
4, 113	Wilshire Boulevard Temple of B’nai B’rith	South Hobart Boulevard between West 6 <sup>th</sup> Street & Wilshire Boulevard	.11
4, 103	Wilshire United Methodist Church	South Plymouth Boulevard & Wilshire Boulevard	.00
4, 164	Saint James Episcopal Church	Wilshire Boulevard & South St. Andrews Place	.00
3, 82	First Church of Christ Scientist	141 South Rexford Drive, Beverly Hills	.10
5, 124	Saint Victor’s Catholic Church	8634 Holloway Drive, West Hollywood	.16
2, 196	Westwood Presbyterian Church	10822 Wilshire Boulevard, Los Angeles, CA 90024	.00
1, 173	Assembly of God	14 Arizona Avenue, Santa Monica, CA 90401	.14





**Table 4-4. Other Community Facilities within 0.25-mile of the Westside Corridor (continued)**

Sheet No., ID No.	Name	Location	Proximity to Alignment (miles)
1, 174	Christian Institute	1308 2nd Street Santa Monica, CA 90401	.14
1, 175	First Presbyterian Church	1220 2nd Street Santa Monica, CA 90401	.06
1, 176	1 <sup>st</sup> Church of Santa Monica	1322 2nd Street Santa Monica, CA 90401	.19
1, 177	Breakpoint Bridge Church	On 4th Street between Wilshire Boulevard and Arizona Avenue	.07
1, 178	Metro Church Calvary Chapel	1231 4th Street Santa Monica, CA 90401	.08
1, 179	Saint Peter and Saint Paul Church	1245 4th Street Santa Monica, CA 90401	.11
1, 180	1 <sup>st</sup> Church of Christ	505 Arizona Avenue Santa Monica, CA 90401	.13
1, 181	Soka Gakkai International	606 Wilshire Boulevard Santa Monica, CA 90401	.00
1, 184	New Age Bible & Philosophy Center	1139 Lincoln Boulevard Santa Monica, CA 90403	.05
1, 185	Living Torah Center/Chabad	1130 Wilshire Boulevard Santa Monica, CA 90401	.00
1, 186	Church of the Living God	1314 17th Street Santa Monica, CA 90404	.16
1, 188	Christian Science Church	1133 South Bundy Drive Los Angeles, CA 90049	.04
2, 189	Shoreline Community Church West Los Angeles	1045 Broxton Avenue Los Angeles, CA 90024	.17
2, 190	28 <sup>th</sup> Church Christ Scientist	1018 Hilgard Avenue Los Angeles, CA 90024	.06
2, 191	Lutheran Church of the Master	10931 Santa Monica Boulevard Los Angeles, CA 90025	.18
2, 192	Southern California Jewish Center	1651 Westwood Boulevard Los Angeles, CA 90024	.00
2, 193	The Church of Jesus Christ of Latter Day Saints	10777 Santa Monica Boulevard Los Angeles, CA 90025	.00
2, 194	Saint Paul Apostle Catholic Church	10750 Ohio Avenue Los Angeles, CA 90024	.11
2, 195	Kahal Joseph Congregation	10505 Santa Monica Boulevard Los Angeles, CA 90025	.00
4, 197	Oasis Christian Church	5100 Wilshire Boulevard Los Angeles, CA 90036	.00
4, 198	Wilshire Boulevard Temple	3663 Wilshire Boulevard Los Angeles, CA 90010	.08
3, 199	Grace Christian Church	5220 Wilshire Boulevard Los Angeles, CA 90036	.00
2, 200	University Bible Church	10801 Wilshire Boulevard Los Angeles, CA 90024	.00



Table 4-4. Other Community Facilities within 0.25-mile of the Westside Corridor (continued)

Sheet No., ID No.	Name	Location	Proximity to Alignment (miles)
2, 201	Pacific Crossroads Church	10351 Santa Monica Boulevard, Los Angeles, CA 90025	.00
2, 202	Shephardic Temple Tiferet	10500 Wilshire Boulevard Los Angeles, CA 90024	.23
3, 203	Church of Scientology	9885 Charleville Boulevard, Beverly Hills, CA 90212	.04
3, 204	Beverly Hills Presbyterian Church	505 North Rodeo Drive Beverly Hills, CA 90210	.25
3, 205	Church of Religious Science	50 North La Cienega Boulevard, Beverly Hills, CA 90211	.07
3, 206	Los Angeles Church of Religious Science	6404 Wilshire Boulevard Los Angeles, CA 90048	.00
3, 207	Congregation Torah V Chesed	6407 Orange Street West Hollywood, CA 90048	.09
4, 208	Bethel Presbyterian Church	857 South La Brea Avenue Los Angeles, CA 90036	.18
4, 209	Hungarian Reformed Church	751 Crenshaw Boulevard Los Angeles, CA 90005	.16
4, 210	Korean Eastern Presbyterian Church	4270 West 6th Street Los Angeles, CA 90020	.13
4, 211	Our Savior Lutheran Church	6th Street & Bronson Avenue, Los Angeles, California 90010	.09
4, 212	Korean Catholic Renewal Movement	4055 Wilshire Boulevard Los Angeles, CA 90010	.00
4, 213	Ku In Holy Presbyterian Church	4041 Wilshire Boulevard Los Angeles, CA 90010	.00
4, 214	LA Jesus Village Church	4009 Wilshire Boulevard Los Angeles, CA 90010	.00
4, 216	Temple of Soul Truth	Wilton Place/8th Street Los Angeles, California 90005	.25
4, 217	Church of God Word	3960 Wilshire Boulevard Los Angeles, CA 90010	.00
4, 218	California Calvary Church	3921 Wilshire Boulevard Los Angeles, CA 90010	.00
4, 218	Ha Na Korean Wesleyan Church	3921 Wilshire Boulevard Los Angeles, CA 90010	.00
4, 220	Song One Church	3912 Wilshire Boulevard Los Angeles, CA 90010	.00
4, 220	The Church of Joy	3912 Wilshire Boulevard Los Angeles, CA 90010	.00
4, 221	New Life	3850 Wilshire Boulevard Los Angeles, CA 90010	.00
4, 222	Church of Christ	635 South Manhattan Place, Los Angeles, CA 90005	.03
4, 223	Mijoo Yang Kog Presbyterian	519 South Western Avenue Los Angeles, CA 90020	.18
4, 224	Iglesia de Casa De Jesucristo	3907 West 6th Street Los Angeles, CA 90020	.14



Table 4-4. Other Community Facilities within 0.25-mile of the Westside Corridor (continued)

Sheet No., ID No.	Name	Location	Proximity to Alignment (miles)
4, 225	Los Angeles International Church of Christ	3731 Wilshire Boulevard Los Angeles, CA 90010	.00
4, 226	Vision Full Gospel Church	3700 Wilshire Boulevard Los Angeles, CA 90010	.00
4, 227	Nasung Yang Moon Church	695 South Harvard Boulevard, Los Angeles, CA 90005	.17
4, 228	Korean Evangelical Church of America	691 South Harvard Boulevard, Los Angeles, CA 90005	.16
3, 230	Our Lady of Mount Lebanon Church	333 South San Vicente Boulevard, Los Angeles, CA 90048	.00
5, 231	West Hollywood Community Church	Cynthia Street & North San Vicente Boulevard	.19
5, 232	Crescent Heights Methodist Church	Fountain Avenue & North Fairfax Avenue, West Hollywood, CA 90046	.25
5, 233	Chabad Russian Synagogue	7636 Santa Monica Boulevard, West Hollywood, CA 90046	.00
5, 234	WeHo Church	916 North Formosa Avenue West Hollywood, CA 90046	.19
5, 235	Blessed Sacrament Church	6641 West Sunset Boulevard, Los Angeles, CA 90028	.23
5, 236	Living Water Christian Center	1540 North Highland Avenue, Hollywood, CA 90028	.00
<b>Cemeteries</b>			
2, 172	Los Angeles National Cemetery	950 South Sepulveda Boulevard, Los Angeles	.00
2, 70	Dignity Memorial Pierce Brothers Westwood Village Memorial Park and Mortuary	Wilshire Boulevard & Glendon	.00
<b>Hospitals</b>			
3, 117	Cedars-Sinai Medical Center	Beverly Boulevard & South San Vicente	.00
1, 52	Saint John's Hospital & Health Center	20 <sup>th</sup> Street & Santa Monica Boulevard	.05
2, 62	VA West Los Angeles Healthcare Center	Wilshire Boulevard & Federal Avenue	.00
1, 28	Santa Monica UCLA Medical Center & Orthopedic Hospital	Wilshire Boulevard & 15 <sup>th</sup> Street	.00
<b>Convalescent</b>			
1, 45	Arbor View Health Care Center	1338 20 <sup>th</sup> Street Santa Monica, CA 90404	.18
1, 48	Berkeley East Convalescent Hospital	Arizona Avenue & 20 <sup>th</sup> Street, Santa Monica, CA 90404	.12
1, 31	Berkeley West Convalescent Hospital	1623 Arizona Avenue Santa Monica, CA 92404	.12
1, 56	Brentwood Nursing & Rehabilitation	1321 Franklin Street Santa Monica, CA 90404	.15
3, 89	Carmelite Elder Care Management	8350 Wilshire Boulevard Beverly Hills, CA 90211	.00
3, 99	Comfort Keepers	5478 Wilshire Boulevard Los Angeles, CA 90036	.00
5, 131	Garden of Palms	1025 North Fairfax Avenue West Hollywood, CA 90046	.09



Table 4-4. Other Community Facilities within 0.25-mile of the Westside Corridor (continued)

Sheet No., ID No.	Name	Location	Proximity to Alignment (miles)
5, 136	Gardner Board and Care	1000 North Gardner Street West Hollywood, CA 90046	.14
1, 7	Goldstar Convalescent Hospital	1340 15 <sup>th</sup> Street Santa Monica, CA 90404	.18
1, 165	Good Shepherd Convalescent	1131 Arizona Avenue Santa Monica, CA 90401	.12
3, 166	Guardian Rehabilitation Hospital	533 South Fairfax Avenue Los Angeles, CA 90036	.24
1, 33	Pacific Convalescent Center	1323 17th St. Santa Monica, CA 90404	.16
5, 139	Raya's Paradise	1156 North Gardner Street West Hollywood, CA 90046	.09
1, 27	Sunrise Assisted Living	1312 15 <sup>th</sup> Street Santa Monica, CA 90404	.15
3, 93	Williaman Villas HOA	315 South Williaman Drive Los Angeles, CA 90048	.16
1, 58	Mariner Post-Acute	1252 Franklin St. Santa Monica, CA 90404	.07
2, 78	Elder Friends Inc.	1875 Century Park, Los Angeles, CA 90067	.09
3, 88	A and W Homecare	264 La Cienega Blvd. Beverly Hills, CA 90211	.11
4, 104	Impact Clinical Trials (Adult Daycare)	4311 Wilshire Blvd. Los Angeles, CA 90010	.00
4, 111	Wilshire Adult Day Healthcare	3921 Wilshire Blvd. Los Angeles, CA 90010	.00
5, 141	Partners Adult Day Healthcare	7362 Santa Monica Blvd. West Hollywood, CA 90046	.00
5, 146	Sunrise Adult Day Health Center	7014 W. Sunset Blvd. Los Angeles, CA 90028	.19
1, 57	Sunbridge Care Center for Santa Monica	1321 Franklin Street Santa Monica, CA 90404	.15



## **5.0 ENVIRONMENTAL IMPACTS/ENVIRONMENTAL CONSEQUENCES**

Environmental impacts are discussed in terms of both operation and construction -related effects. The operational impacts describe primarily long-term effects associated with increased transit access, while the construction-related impacts identify potential short-term impacts during the construction period. Construction-related effects are discussed for each type of facility and for specific facilities, as appropriate. This discussion is based on applicable information provided in the Task 14.1.18 Construction and Mitigation Technical Report and other analysis, as noted in Section 1 of this report. For an inventory of facilities by alternative, see Sections 4.1 through 4.9 above, as well as Tables 4-1, 5-1, 5-2 and 5-3.

### **5.1 Operational Impacts—Overview**

The degree to which parkland and other community facilities use can be affected by the system operation from noise or emissions is discussed in the following sections. Effects on parklands that are subject to Section 4(f) requirements are summarized here and described in detail in the Draft Section 4(f) Technical Report. Operation of the subway system generally would not impact parklands or other community facilities with the possible exception of facilities located near stations or maintenance and operation facilities. Direct impacts would include any areas permanently removed from existing parklands or other community facilities as a result of the Westside Subway Extension. Indirect impacts would include increased access and usage beyond their capacity of parklands and community facilities (such as churches, medical facilities, day care centers, libraries, cemeteries, and high schools) located near stations, with potential reduction in use at facilities more remote from these stations; reduction in traffic congestion which could benefit police and fire response times. Impact intensity would be highest near stations and would decrease with distance from stations.

Beneficial effects of the project are also discussed in the following sections. Improved access to transit would result in potential beneficial impacts for the community, particularly for the transit-dependent. Enhanced transit access would result in reduced travel time, and increased local and regional connectivity to community facilities and parks.

#### **5.1.1 No Build Alternative**

Because the No Build Alternative would not include new major infrastructure, except for those projects that are currently under construction or committed projects planned to be in operation by 2035 and identified in the SCAG *Regional Transportation Plan* and Metro's Long Range Transportation Plan, this alternative is not expected to result in direct or indirect impacts on parklands or community services and facilities.

#### **5.1.2 TSM Alternative**

This alternative emphasizes more frequent Metro Rapid and local bus service in the Westside Transit Corridor to reduce delay and enhance mobility. Since enhanced service frequency would increase local and regional connectivity to parklands, usage of parklands along the corridor may increase. However, this is not anticipated to have any adverse direct or indirect impact on parklands or other Section 4(f) lands, such as wildlife areas. The increased service frequency is not anticipated to have any adverse direct or indirect impact



on the following services: police, libraries, schools, medical facilities, religious institutions, cemeteries, or social services. In addition, the TSM Alternative would not involve the construction and operation of new transit facilities on or near existing fire facilities; therefore, no impacts are anticipated to occur.

### **5.1.3 Alternative 1—Westwood/UCLA Extension**

#### **5.1.3.1 Parklands**

Alternative 1, including Options 1 through 6, would not obstruct pedestrian or vehicle access to Carthay Circle Park and Hancock Park. The station portal for the Wilshire/La Cienega Station would be located less than 0.25-mile from the parks and could make them more accessible. No other parks would be affected, and no acquisition of parkland would be required. Therefore, Alternative 1 would not result in any direct or indirect adverse impacts on Section 4(f) parkland.

The Wilshire/Fairfax Station and Station Option 2, Wilshire/Fairfax East Station, also would not result in impacts to parklands. A potential station portal for the Wilshire/Fairfax Station would be located under the Los Angeles County Museum of Art West near Hancock Park.

#### **5.1.3.2 Police**

No police facilities are located along Alternative 1, including Options 1 through 6; therefore, no impacts to police facilities are anticipated. There would be some improvement in traffic flow, which could slightly improve travel times for emergency responses.

#### **5.1.3.3 Fire**

The City of Los Angeles Fire Department Station 29 is adjacent to the Alternative 1 alignment along Wilshire Boulevard/Van Ness Avenue. However, since there are no stations proposed adjacent to Station 29 and since the proposed alignment is in a subway configuration, no impacts to fire services are anticipated. There would be some slight improvement in traffic flow, (see Chapter 3) which could slightly improve travel times for emergency responses.

#### **5.1.3.4 Libraries**

The station portal for the Wilshire/Western Station would be less than 0.25-mile from the Pio Pico Koreatown Branch Library and also adjacent to the Jewish Community Library; thereby potentially increasing accessibility to both libraries.

#### **5.1.3.5 Schools**

Horace Mann Elementary is in close proximity to the Wilshire/La Cienega Station and Option 3 (Wilshire/La Cienega Station Option), UCLA is adjacent to the Westwood/UCLA Station and Option 5 (Westwood/UCLA On-Street Station), and Cathedral Chapel School is in close proximity to the Wilshire/La Brea Station. These schools could benefit from increased accessibility.

Option 4 with either Century City Station would result in a beneficial impact to Beverly Hills High School because it would provide increased accessibility.

#### **5.1.3.6 Medical Facilities**

The public would benefit from improved access to regional healthcare and medical institutions, as well as small clinics and private healthcare offices that are located throughout



the Study Area. Medical facilities in close proximity to Alternative 1 stations and their options include Century City Hospital and UCLA Medical Center.

Access to Century City Hospital would be improved through the location of Option 4 with a Century City Station at Constellation Boulevard.

**5.1.3.7 Cemeteries**

Westwood Memorial Park Cemetery and the Los Angeles National Cemetery, which are both in close proximity to the Westwood/UCLA Station and Option 5, Westwood/UCLA On-Street Station option, would benefit from improved access. However, none of the alternatives are expected to disturb any human remains, including those interred outside of formal cemeteries. Due diligence through the retention of an archaeologist and appropriate site monitors would be maintained. All of the Build Alternatives occur in the vicinity of the Los Angeles National Cemetery but would not impact the cemetery.

**5.1.3.8 Social Services (Daycare, Senior Centers)**

The public would benefit from improved access to social services, including day care and senior centers that are located in close proximity to Alternative 1 stations and their options.

**5.1.4 Alternative 2—Westwood/VA Hospital Extension**

Impacts to parklands, police and fire services, libraries, schools, religious institutions, cemeteries, and social services would be similar to Alternative 1 and Options 1 through 6. Impacts to medical facilities would also be similar to Alternative 1 with the addition of increased access to the Veterans' Affairs' **West Los Angeles Healthcare Center Alternative 2 (Westwood/VA Hospital) and Option 6 (Westwood/VA Hospital North Station), which includes the VA Hospital.**



Table 5-1. Summary of Impacts to Parklands and Recreation Resources within 0.25-mile of the Alternatives

Sheet No	Name	Location	Proximity to Alignment (miles)	Alternatives and MOS	Land Acquisition	Affect Vehicle Access	Barrier Pedestrian Access
1	Santa Monica State Beach	Pacific Coast Highway & Santa Monica Boulevard (Santa Monica)	.04	3, 5	No	No	No
5	Yucca Park	North Las Palmas Avenue & Yucca Street	.19	4, 5	No	No	No
5	De Longpre Park	De Longpre Avenue & North Cherokee Avenue	.19	4, 5	No	No	No
5	Plummer Park	Fountain Avenue & North Vista Street (West Hollywood)	.00	4, 5	No	No	No
5	Kings Road Park	North Kings Road & Romaine Street (West Hollywood)	.10	4, 5	No	No	No
5	West Hollywood Park	Santa Monica Boulevard & North San Vicente Boulevard (West Hollywood)	.00	4, 5	No	No	No
3	Beverly Gardens Park	Wilshire Boulevard & Santa Monica Boulevard (Beverly Hills)	.19	1, 2, 3, 4, 5, MOS-2	No	No	No
3	Oakhurst Park	Wilshire Boulevard & Oakhurst Drive (Beverly Hills)	.04	1, 2, 3, 4, 5, MOS-2	No	No	No
2	Hancock Park	West 6 <sup>th</sup> Street & Curson Avenue (Mid-Wilshire, LA County)	.00	1, 2, 3, 4, 5, MOS-1, MOS-2	No	No	No
2	La Cienega Park	Gregory Way & La Cienega Boulevard (Beverly Hills)	.16	1, 2, 3, 4, 5, MOS-2	No	No	No
2	Westwood Park	Wilshire Boulevard & South Sepulveda Boulevard (Los Angeles)	.21	1, 2, 3, 4, 5	No	No	No
1	Douglas Park	Wilshire Boulevard & Chelsea Avenue (Santa Monica)	.00	3, 5	No	No	No
1	Palisades Park	Ocean Avenue & Santa Monica Boulevard (Santa Monica)	.10	3, 5	No	No	No
1	Reed Park	Wilshire Boulevard & 7 <sup>th</sup> Street (Santa Monica)	.00	3, 5	No	No	No
5	Poinsettia Recreation Center	North Poinsettia Place & Willoughby Avenue (Hollywood/Los Angeles)	.12	4, 5	No	No	No
2	Los Angeles Country Club	Wilshire Boulevard & Comstock Avenue (Los Angeles)	.00	1, 2, 3, 4, 5, MOS 2	No	No	No





**5.1.5 Alternative 3—Santa Monica Extension**

Impacts to police and fire services, libraries, schools, cemeteries, and social services would be similar to Alternative 2 and Options 1 through 6.

Impacts to parklands, medical facilities, and religious institutions would be similar to Alternative 1 and 2 and Options 1 through 6 with the following exceptions:

- Three additional parks (Douglas Park, Reed Park, and Palisades Park) would be located less than one-quarter mile from the station, potentially increasing access to the parks. The station portal at the Wilshire/4th Station would increase access to these parks. No acquisition of parkland would be required.
- Three additional hospitals (Bel Air Surgical Center, Santa Monica UCLA Medical Center and Orthopedic Hospital and St. John’s Hospital Health Center) would be in close proximity to the Wilshire/Bundy, Wilshire/16th Station and the Wilshire/26th Station, respectively. Proximity to these two stations could provide increased access to the two medical facilities.
- Four additional religious facilities would be located near the proposed stations. These additional facilities are the Santa Monica Seventh Day Adventist Church, Unitarian Community Church, Church of Saint Augustine By-The-Sea, and Nichiren Shoshu of America Temple. No direct impacts are expected from the permanent loss or removal of religious facilities.

**5.1.6 Alternative 4—Westwood/VA Hospital Extension plus West Hollywood Extension**

Impacts to police, fire, cemetery, and social services would be similar to Alternative 2 and Options 1 through 6.

Impacts to parklands, libraries, schools, medical facilities, and religious institutions would be similar to Alternative 1 with the following exceptions:

- Three additional parks in West Hollywood are less than 0.25 mile from the Alternative 4 station portals. The parks are West Hollywood Park, Poinsettia Recreation Center and Plummer Park in West Hollywood. The station portal the Santa Monica/La Brea Station would increase access to these parks. No acquisition of parkland would be required.
- One additional library (West Hollywood Public Library) would be less than 0.25 mile from the Santa Monica/San Vicente Station, potentially increasing access to the library.
- Two additional schools (Hollywood Senior High School and Blessed Sacrament School) are in close proximity to the Hollywood/Highland Station and would experience increased accessibility.
- One additional regional healthcare and medical institution (Cedars Sinai Medical Center) would be in close proximity to the Beverly Center Area Station. Alternative 4 would provide increased access to this medical facility.
- One additional religious facility, Saint Victor’s Catholic Church, would be near Alternative 4. No direct impacts are expected from the permanent loss or removal of religious facilities.



**5.1.7 Alternative 5—Santa Monica Extension plus West Hollywood Extension**

Impacts to police, fire, cemetery, and social services would be similar to Alternatives 3 and 4 and Options 1 through 6.

Impacts to parklands, libraries, schools, medical facilities, and religious institutions would be similar to Alternatives 3 and 4.

**5.1.8 MOS 1**

Impacts to parklands and schools would be similar to Alternative 1 and Option 1 between the existing Wilshire/Western Station and the proposed Wilshire/Fairfax Station.

**5.1.9 MOS 2**

Impacts to parklands, police and fire services, libraries, medical facilities, religious institutions, cemeteries, and social services would be similar to Alternative 1 and Options 1 through 4 between the existing Wilshire/Western Station and the proposed Century City Station.

**5.1.10 Future Vehicle Storage and Maintenance for All Alternatives**

For all alternatives, future vehicle and storage and maintenance facilities would not result in any direct or indirect adverse impacts on parklands and community facilities and services. No direct or indirect impacts would occur because none of these resources are in close proximity to the proposed storage and maintenance facilities.



Table 5-2. Summary of Impacts to Police, Fire and Library Services Within 0.25-mile of the Westside Corridor

Sheet No	Station	Address	Area of Project Serviced	Proximity to Alignment (miles) <sup>2</sup>	Alternatives and MOS	Impact
<b>Police Services</b>						
5, 171	Los Angeles County Sheriff's Department—West Hollywood Station	780 North San Vicente Boulevard, West Hollywood	West Hollywood	.00	4, 5	None
<b>Fire Services</b>						
4, 108	City of Los Angeles Fire Department Station 29	4029 Wilshire Boulevard, Los Angeles	Wilshire Center and Hancock Park	.00	1, 2, 3, 4, 5, MOS 1, MOS 2	None
1, 43	Santa Monica Fire Department Fire Stations 3 & 4	1302 19 <sup>th</sup> Street, Santa Monica Boulevard	City of Santa Monica	.18	3, 5	None
5, 137	Los Angeles County Fire Department Station 8	7643 Santa Monica Boulevard, West Hollywood	Unincorporated Los Angeles and West Hollywood	.00	4, 5	None
5, 168	Los Angeles County Fire Department Station 7	864 San Vicente Boulevard, West Hollywood	Unincorporated Los Angeles and West Hollywood	.13	4, 5	None
2, 63	Los Angeles Fire Department Station 37	1090 Veteran Avenue, Los Angeles, CA 90024	Westwood and the Western UCLA Campus	.18	2, 3, 4, 5	None
<b>Libraries</b>						
5, 120	Los Angeles Public Library—West Hollywood Branch	715 North San Vicente Boulevard Los Angeles, CA 90069	City of West Hollywood	.00	4, 5	None
4, 112	Pio Pico Koreatown Branch Library	694 South Oxford Avenue Los Angeles, CA 90005	City of Los Angeles (Mid-Wilshire Area)	.11	1, 2, 3, 4, 5, MOS 1, MOS 2	None
1, 13	Santa Monica Public Library	601 Santa Monica Boulevard Santa Monica, CA 90401	City of Santa Monica	.23	3, 5	None
3, 92	Jewish Community Library of Los Angeles—Peter M. Kahn Memorial	6505 Wilshire Boulevard, Los Angeles, CA 90036	County of Los Angeles	.00	1, 2, 3, 4, 5, MOS 1, MOS 2	None

**Table 5-3. Summary of Impacts to Other Community Facilities within 0.25-mile of the Westside Corridor**

Sheet No.	Name	Location	Proximity to Alignment (miles)	Impacts
<b>Educational Facilities</b>				
<b>Day Care and Pre-Schools</b>				
1, 37	Beth Shir Sholom Early Childhood Center (Pre-school)	1827 California Ave. Santa Monica, CA 90403	.13	None
1, 51	Cassidy Pre-school	2122 Wilshire Blvd. Santa Monica, CA 90403	.00	None
5, 132	Fountain Day School	1128 N Orange Grove Ave. West Hollywood, CA 90046	.04	None
5, 125	Holloway Pre-school	8510 Holloway Drive Los Angeles, CA 90069	.07	None
5, 145	Sunset Montessori Pre-school	1432 N Sycamore Ave Los Angeles, CA 90028	.22	None
5, 140	West Hollywood Pre-school	7377 Santa Monica Blvd. West Hollywood, CA 90046	.18	None
2, 76	Westwood United Methodist Pre-school	10497 Wilshire Blvd. Los Angeles CA 90024	.23	None
4, 167	Wilshire Pre-school	711 S. Plymouth Blvd. Los Angeles, CA 90005	.02	None
1, 1	First Presbyterian Nursery	1220 2nd St. Santa Monica, CA 90401	.03	None
1, 10	Santa Monica YMCA Child Development	1332 6th St. Santa Monica, CA 90401	.17	None
1, 19	Gan Israel Pre-School	1341 9th St. Santa Monica, CA 90401	.18	None
1, 20	Trinity Baptist Church Pre-School	1019 California Ave. Santa Monica, CA 90403	.13	None
1, 30	Lincoln Child Development	1532 California Ave. Santa Monica, CA 90403	.13	None
1, 32	Pilgrim Lutheran Pre-School	1730 Wilshire Blvd. Santa Monica, CA 90403	.00	None
1, 38	Garden of Angels Pre-School	1009 18th St. Santa Monica, CA 90403	.15	None
1, 53	Ulrich Daycare	1305 23rd. St. Santa Monica, CA 90404	.14	None
2, 72	Westwood Presbyterian School	10822 Wilshire Blvd. Los Angeles, CA 90024	.00	None
2, 73	Montessori Discovery Garden	10551 Holman Ave. Los Angeles, CA 90024	.23	None
2, 77	Century City Kids Club	1908 Fox Hills Dr. Los Angeles, CA 90025	.18	None
3, 84	Hebrew Nessah Nursery School	142 S. Rexford Dr. Beverly Hills, CA 90212	.07	None
3, 86	Gan Yaffa Pre-School	177 S. Robertson Blvd. Beverly Hills, CA 90211	.11	None



Table 5-3. Summary of Impacts to Other Community Facilities within 0.25-mile of the Westside Corridor (continued)

Sheet No.	Name	Location	Proximity to Alignment (miles)	Impacts
3, 90	Montessori Children's World	650 S. San Vicente Blvd. Beverly Hills, CA 90048	.05	None
4, 106	Wilton Place Children's Center	4030 Leeward Ave. Los Angeles, CA 90005	.19	None
4, 109	St. James Pre-School	4270 W. 6th St. Los Angeles, CA 90020	.12	None
4, 110	Evergreen Child Care	3960 Wilshire Blvd. Los Angeles, CA 90010	.00	None
4, 116	Wilshire Smiling Tree Pre-School and Kindergarten	611 S. Hobart Blvd. Los Angeles, CA 90005	.14	None
5, 123	West Hollywood Daycare Pre-School	723 Huntley Dr. West Hollywood, CA 90069	.18	None
5, 127	Laurel Children's Center	8023 Willoughby Ave. West Hollywood, CA 90046	.25	None
5, 129	ABC Little School: West Hollywood	927 N. Fairfax Ave. West Hollywood, CA 90046	.22	None
5, 130	Beverly Hills Montessori School	1105 N. Laurel Ave. West Hollywood, CA 90046	.00	None
5, 135	L' Chaim Daycare	7636 Santa Monica Blvd. West Hollywood, CA 90046	.00	None
5, 138	West Hollywood Children's Academy	1030 N. Vista St. West Hollywood, CA 90046	.10	None
5, 142	Gardner Little School	1226 N. Gardner St. West Hollywood, CA 90046	.17	None
5, 143	The Walther School	1246 N. Gardner St. West Hollywood, CA 90046	.20	None
5, 152	The Canyon Co-OP School	1820 N. Las Palmas Ave. Los Angeles, CA 90028	.24	None
2, 245	Creative Center Preschool	10547 Santa Monica Boulevard, Los Angeles, CA 90025	.00	None
3, 247	Beverly Hills Presbyterian Pre-school	505 North Rodeo Drive Beverly Hills, CA 90210	.25	None
<b>Elementary Schools</b>				
3, 81	Beverly Vista Elementary School	Charleville Boulevard & South Rexford Drive	.19	None
1, 60	Brockton Avenue Elementary School	Brockton Avenue & Texas Avenue	.23	None
2, 74	Fairburn Avenue Elementary School	Fairburn Avenue & Rochester Avenue	.01	None
3, 87	Horace Mann Elementary School	South Hamel Drive & Charleville Boulevard	.09	None
5, 128	Laurel Elementary School	North Laurel Avenue & Willoughby Avenue	.22	None
4, 153	Los Angeles Elementary School	Ingraham Street & South Norton Avenue	.07	None

**Table 5-3. Summary of Impacts to Other Community Facilities within 0.25-mile of the Westside Corridor (continued)**

Sheet No.	Name	Location	Proximity to Alignment (miles)	Impacts
1, 54	McKinley Elementary School	Santa Monica Boulevard & 24th Street	.23	None
4, 107	Wilton Place Elementary School	South Wilton Place & West 8th Street	.23	None
2, 246	El Rodeo Elementary School	605 North Whittier Drive, Beverly Hills, CA 90210	.25	None
<b>Middle Schools</b>				
4, 102	Burroughs Middle School	South McCadden Place between Wilshire Boulevard & West 6th Street	.13	None
1, 26	Lincoln Middle School	California Avenue & 14th Street	.17	None
2, 242	Ralph Waldo Emerson Middle School	1650 Selby Avenue Los Angeles, CA 90024	.20	None
<b>Senior High Schools</b>				
2, 79	Beverly Hills High School	Moreno Drive & Heath Avenue	.03	None
1, 23	Olympic High School	721 Ocean Park Blvd. Santa Monica, CA 90405	.18	None
5, 147	Hollywood Senior High School	North Highland Avenue & West Sunset Boulevard	.00	None
1, 61	University Senior High School	Texas Avenue & South Westgate Avenue	.21	None
<b>Private Schools</b>				
1, 18	Saint Monica Catholic High School	Washington Avenue & Lincoln Boulevard	.21	None
1, 156	Pacifica Christian High School	Lincoln Avenue & California Avenue	.03	None
1, 157	New Roads Middle School	Lincoln Avenue between Wilshire Boulevard & Arizona Avenue	.15	None
3, 95	Cathedral Chapel School	South Cochran Avenue & West 8th Street	.13	None
5, 133	Saint Ambrose School	North Fairfax Avenue & Fountain Avenue	.16	None
4, 164	Saint James Episcopal School	Wilshire Boulevard & South St. Andrews Place	.00	None
1, 15	Saint Monica Parochial School	California Avenue & 7th Street	.17	None
1, 3	Delphi Academy of Santa Monica	4th Street between Wilshire Boulevard & Arizona Avenue	.04	None
5, 148	Blessed Sacrament School	North Laurel Avenue & Santa Monica Boulevard	.03	None
1, 49	Montessori School	West Sunset Boulevard between North Highland Avenue & North Cahuenga Boulevard	.18	None
2, 159	Good Shepherd Catholic School	South Linden Drive & Charleville Boulevard	.04	None



Table 5-3. Summary of Impacts to Other Community Facilities within 0.25-mile of the Westside Corridor (continued)

Sheet No.	Name	Location	Proximity to Alignment (miles)	Impacts
5, 144	Hollywood Schoolhouse	North Highland Avenue & Fountain Avenue	.00	None
3, 118	Maimonides Academy	Huntley Drive & Rosewood Avenue	.09	None
5, 160	Pacific Hills School	Holloway Drive between Hancock Avenue & Westmount Drive	.17	None
4, 161	Wilshire Private School	Wilshire Boulevard & South Longwood Avenue	.00	None
5, 154	Larchmont Charter School—West Hollywood	North Fairfax Avenue & Fountain Avenue	.20	None
4, 155	New Los Angeles Charter School	5100 Wilshire Boulevard, Los Angeles, CA 90036	.00	None
1, 237	Saint Monica Elementary School	1039 7th Street, Santa Monica, CA 90403	.15	None
1, 238	Concord High School	1831 Wilshire Boulevard, Santa Monica, CA 90403	.00	None
1, 240	Lighthouse Christian Academy	1424 Yale Street Santa Monica, CA 90405	.25	None
1, 241	Lighthouse Church School	1220 20th Street Santa Monica, CA 90404	.04	None
2, 243	Saint Paul the Apostle School	1536 Selby Avenue Los Angeles, CA 90024	.12	None
5, 250	The Oaks School	6817 Franklin Ave. Los Angeles, CA 90028	.19	None
5, 251	Green School of Hollywood	1547 North McCadden Place Los Angeles, CA 90028	.05	None
<b>College or Trade Schools</b>				
2, 162	The Chicago School of Professional Psychology—Westwood Campus Address:	Gayley Avenue & Lindbrook Drive	.00	None
1, 169	University of Santa Monica	Wilshire Boulevard & 21st Street	.00	None
2, 170	UCLA	405 Hilgard Avenue, Los Angeles	.00	None
1, 239	Emperor's College of Traditional Oriental Medicine	1807 Wilshire Blvd. Santa Monica, CA 90403	.00	None
2, 244	Concord Law School	10866 Wilshire Blvd Los Angeles, CA 90024	.00	None
1, 248	Cal America Education Institute	3700 Wilshire Boulevard, Los Angeles, CA 90010	.00	None
<b>Religious Facilities</b>				
3, 163	All Saints Episcopal Church	Santa Monica Boulevard & North Camden Drive	.25	None
1, 40	Beth Sholom Temple	California Avenue & 19th Street	.13	None
1, 25	Central Assembly of God Church	Arizona Avenue & 14th Street	.16	None
1, 6	Church of Christ	California Avenue & 4th Street	.16	None
1, 5	Church of Saint Augustine By the Sea	Wilshire Boulevard & 4th Street	.00	None

**Table 5-3. Summary of Impacts to Other Community Facilities within 0.25-mile of the Westside Corridor (continued)**

Sheet No.	Name	Location	Proximity to Alignment (miles)	Impacts
3, 80	Church of the Good Shepherd	North Bedford Drive & Park Way	.17	None
1, 36	Church of the Nazarene	Washington Avenue & 18th Street	.25	None
5, 150	First Baptist Church	North Las Palmas Avenue & Selma Avenue	.16	None
1, 12	First Christian Church	Arizona Avenue & 6th Street	.12	None
1, 8	First Church of Christ Scientist	Arizona & 5th Street	.11	None
5, 151	First United Methodist Church	Franklin Avenue & North Highland Avenue	.19	None
1, 24	First United Methodist Church of Santa Monica	Washington Avenue & 11th Street	.22	None
1, 9	Nichiren Shoshu of America Temple	Wilshire Boulevard & 6th Street	.00	None
1, 34	Pilgrim Lutheran Church	Wilshire Boulevard & 17th Street	.00	None
5, 134	Saint Ambrose Catholic Church	North Fairfax Avenue & Fountain Avenue	.22	None
4, 115	Saint Basils Roman Catholic Church	South Kingsley Drive & Wilshire Boulevard	.17	None
1, 16	Saint Monica Catholic Church	California Avenue & 7th Street	.15	None
1, 41	Santa Monica Seventh Day Adventist Church	Arizona Avenue & 19th Street	.07	None
1, 59	The Church of Jesus Christ of Latter Day Saints	Centinela Avenue & Arizona Avenue	.12	None
1, 44	The Lighthouse Church	20th Street & Wilshire Boulevard	.00	None
1, 22	Trinity Baptist Church	California Avenue & 10th Street	.15	None
1, 35	Unitarian Community Church	Arizona Avenue & 18th Street	.13	None
4, 113	Wilshire Boulevard Temple of B'nai B'rith	South Hobart Boulevard between West 6th Street & Wilshire Boulevard	.11	None
4, 103	Wilshire United Methodist Church	South Plymouth Boulevard & Wilshire Boulevard	.00	None
4, 164	Saint James Episcopal Church	Wilshire Boulevard & South St. Andrews Place	.00	None
3, 82	First Church of Christ Scientist	141 South Rexford Drive, Beverly Hills	.10	None
5, 124	Saint Victor's Catholic Church	8634 Holloway Drive, West Hollywood	.16	None
2, 196	Westwood Presbyterian Church	10822 Wilshire Boulevard, Los Angeles, CA 90024	.00	None
1, 173	Assembly of God	14 Arizona Avenue, Santa Monica, CA 90401	.14	None
1, 174	Christian Institute	1308 2nd Street Santa Monica, CA 90401	.14	None
1, 175	First Presbyterian Church	1220 2nd Street Santa Monica, CA 90401	.06	None
1, 176	1st Church of Santa Monica	1322 2nd Street Santa Monica, CA 90401	.19	None





Table 5-3. Summary of Impacts to Other Community Facilities within 0.25-mile of the Westside Corridor (continued)

Sheet No.	Name	Location	Proximity to Alignment (miles)	Impacts
1, 177	Breakpoint Bridge Church	On 4th Street between Wilshire Boulevard and Arizona Avenue	.07	None
1, 178	Metro Church Calvary Chapel	1231 4th Street Santa Monica, CA 90401	.08	None
1, 179	Saint Peter and Saint Paul Church	1245 4th Street Santa Monica, CA 90401	.11	None
1, 180	1st Church of Christ	505 Arizona Avenue Santa Monica, CA 90401	.13	None
1, 181	Soka Gakkai International	606 Wilshire Boulevard Santa Monica, CA 90401	.00	None
1, 184	New Age Bible & Philosophy Center	1139 Lincoln Boulevard Santa Monica, CA 90403	.05	None
1, 185	Living Torah Center/Chabad	1130 Wilshire Boulevard Santa Monica, CA 90401	.00	None
1, 186	Church of the Living God	1314 17th Street Santa Monica, CA 90404	.16	None
1, 188	Christian Science Church	1133 South Bundy Drive Los Angeles, CA 90049	.04	None
2, 189	Shoreline Community Church West Los Angeles	1045 Broxton Avenue Los Angeles, CA 90024	.17	None
2, 190	28th Church Christ Scientist	1018 Hilgard Avenue Los Angeles, CA 90024	.06	None
2, 191	Lutheran Church of the Master	10931 Santa Monica Boulevard Los Angeles, CA 90025	.18	None
2, 192	Southern California Jewish Center	1651 Westwood Boulevard Los Angeles, CA 90024	.00	None
2, 193	The Church of Jesus Christ of Latter Day Saints	10777 Santa Monica Blvd. Los Angeles, CA 90025	.00	None
2, 194	Saint Paul Apostle Catholic Church	10750 Ohio Avenue Los Angeles, CA 90024	.11	None
2, 195	Kahal Joseph Congregation	10505 Santa Monica Blvd. Los Angeles, CA 90025	.00	None
4, 197	Oasis Christian Church	5100 Wilshire Boulevard Los Angeles, CA 90036	.00	None
4, 198	Wilshire Boulevard Temple	3663 Wilshire Boulevard Los Angeles, CA 90010	.08	None
3, 199	Grace Christian Church	5220 Wilshire Boulevard Los Angeles, CA 90036	.00	None
2, 200	University Bible Church	10801 Wilshire Boulevard Los Angeles, CA 90024	.00	None
2, 201	Pacific Crossroads Church	10351 Santa Monica Boulevard, Los Angeles, CA 90025	.00	None
2, 202	Shephardic Temple Tiferet	10500 Wilshire Boulevard Los Angeles, CA 90024	.23	None



Table 5-3. Summary of Impacts to Other Community Facilities within 0.25-mile of the Westside Corridor (continued)

Sheet No.	Name	Location	Proximity to Alignment (miles)	Impacts
3, 203	Church of Scientology	9885 Charleville Boulevard, Beverly Hills, CA 90212	.04	None
3, 204	Beverly Hills Presbyterian Church	505 North Rodeo Drive Beverly Hills, CA 90210	.25	None
3, 205	Church of Religious Science	50 North La Cienega Boulevard, Beverly Hills, CA 90211	.07	None
3, 206	Los Angeles Church of Religious Science	6404 Wilshire Boulevard Los Angeles, CA 90048	.00	None
3, 207	Congregation Torah V Chesed	6407 Orange Street West Hollywood, CA 90048	.09	None
4, 208	Bethel Presbyterian Church	857 South La Brea Avenue Los Angeles, CA 90036	.18	None
4, 209	Hungarian Reformed Church	751 Crenshaw Boulevard Los Angeles, CA 90005	.16	None
4, 210	Korean Eastern Presbyterian Church	4270 West 6th Street Los Angeles, CA 90020	.13	None
4, 211	Our Savior Lutheran Church	6th Street & Bronson Avenue, Los Angeles, California 90010	.09	None
4, 212	Korean Catholic Renewal Movement	4055 Wilshire Boulevard Los Angeles, CA 90010	.00	None
4, 213	Ku In Holy Presbyterian Church	4041 Wilshire Boulevard Los Angeles, CA 90010	.00	None
4, 214	LA Jesus Village Church	4009 Wilshire Boulevard Los Angeles, CA 90010	.00	None
4, 216	Temple of Soul Truth	Wilton Place/8th Street Los Angeles, California 90005	.25	None
4, 217	Church of God Word	3960 Wilshire Boulevard Los Angeles, CA 90010	.00	None
4, 218	California Calvary Church	3921 Wilshire Boulevard Los Angeles, CA 90010	.00	None
4, 218	Ha Na Korean Wesleyan Church	3921 Wilshire Boulevard Los Angeles, CA 90010	.00	None
4, 220	Song One Church	3912 Wilshire Boulevard Los Angeles, CA 90010	.00	None
4, 220	The Church of Joy	3912 Wilshire Boulevard Los Angeles, CA 90010	.00	None
4, 221	New Life	3850 Wilshire Boulevard Los Angeles, CA 90010	.00	None
4, 222	Church of Christ	635 South Manhattan Place, Los Angeles, CA 90005	.03	None
4, 223	Mijoo Yang Kog Presbyterian	519 South Western Avenue Los Angeles, CA 90020	.18	None
4, 224	Iglesia de Casa De Jesucristo	3907 West 6th Street Los Angeles, CA 90020	.14	None



Table 5-3. Summary of Impacts to Other Community Facilities within 0.25-mile of the Westside Corridor (continued)

Sheet No.	Name	Location	Proximity to Alignment (miles)	Impacts
4, 225	Los Angeles International Church of Christ	3731 Wilshire Boulevard Los Angeles, CA 90010	.00	None
4, 226	Vision Full Gospel Church	3700 Wilshire Boulevard Los Angeles, CA 90010	.00	None
4, 227	Nasung Yang Moon Church	695 South Harvard Boulevard, Los Angeles, CA 90005	.17	None
4, 228	Korean Evangelical Church of America	691 South Harvard Boulevard, Los Angeles, CA 90005	.16	None
3, 230	Our Lady of Mount Lebanon Church	333 South San Vicente Boulevard, Los Angeles, CA 90048	.00	None
5, 231	West Hollywood Community Church	Cynthia Street & North San Vicente Boulevard	.19	None
5, 232	Crescent Heights Methodist Church	Fountain Avenue & North Fairfax Avenue, West Hollywood, CA 90046	.25	None
5, 233	Chabad Russian Synagogue	7636 Santa Monica Boulevard, West Hollywood, CA 90046	.00	None
5, 234	WeHo Church	916 North Formosa Avenue West Hollywood, CA 90046	.19	None
5, 235	Blessed Sacrament Church	6641 West Sunset Boulevard, Los Angeles, CA 90028	.23	None
5, 236	Living Water Christian Center	1540 North Highland Avenue, Hollywood, CA 90028	.00	None
<b>Cemeteries</b>				
2, 172	Los Angeles National Cemetery	950 South Sepulveda Boulevard, Los Angeles	.00	None
2, 70	Dignity Memorial Pierce Brothers Westwood Village Memorial Park and Mortuary	Wilshire Boulevard & Glendon	.00	None
<b>Hospitals</b>				
3, 117	Cedars-Sinai Medical Center	Beverly Boulevard & South San Vicente	.00	None
1, 52	Saint John's Hospital & Health Center	20th Street & Santa Monica Boulevard	.05	None
2, 62	VA West Los Angeles Healthcare Center	Wilshire Boulevard & Federal Avenue	.00	None
1, 28	Santa Monica UCLA Medical Center & Orthopedic Hospital	Wilshire Boulevard & 15th Street	.00	None
<b>Convalescent</b>				
1, 45	Arbor View Health Care Center	1338 20th Street Santa Monica, CA 90404	.18	None
1, 48	Berkeley East Convalescent Hospital	Arizona Avenue & 20th Street, Santa Monica, CA 90404	.12	None
1, 31	Berkeley West Convalescent Hospital	1623 Arizona Avenue Santa Monica, CA 92404	.12	None

**Table 5-3. Summary of Impacts to Other Community Facilities within 0.25-mile of the Westside Corridor (continued)**

Sheet No.	Name	Location	Proximity to Alignment (miles)	Impacts
1, 56	Brentwood Nursing & Rehabilitation	1321 Franklin Street Santa Monica, CA 90404	.15	None
3, 89	Carmelite Elder Care Management	8350 Wilshire Boulevard Beverly Hills, CA 90211	.00	None
3, 99	Comfort Keepers	5478 Wilshire Boulevard Los Angeles, CA 90036	.00	None
5, 131	Garden of Palms	1025 North Fairfax Avenue West Hollywood, CA 90046	.09	None
5, 136	Gardner Board and Care	1000 North Gardner Street West Hollywood, CA 90046	.14	None
1, 7	Goldstar Convalescent Hospital	1340 15th Street Santa Monica, CA 90404	.18	None
1, 165	Good Shepherd Convalescent	1131 Arizona Avenue Santa Monica, CA 90401	.12	None
3, 166	Guardian Rehabilitation Hospital	533 South Fairfax Avenue Los Angeles, CA 90036	.24	None
1, 33	Pacific Convalescent Center	1323 17th St Santa Monica, CA 90404	.16	None
5, 139	Raya's Paradise	1156 North Gardner Street West Hollywood, CA 90046	.09	None
1, 27	Sunrise Assisted Living	1312 15th Street Santa Monica, CA 90404	.15	None
3, 93	Williaman Villas HOA	315 South Williaman Drive Los Angeles, CA 90048	.16	None
1, 58	Mariner Post-Acute	1252 Franklin St. Santa Monica, CA 90404	.07	None
2, 78	Elder Friends Inc.	1875 Century Park, Los Angeles, CA 90067	.09	None
3, 88	A and W Homecare	264 La Cienega Blvd. Beverly Hills, CA 90211	.11	None
4, 104	Impact Clinical Trials (Adult Daycare)	4311 Wilshire Blvd. Los Angeles, CA 90010	.00	None
4, 111	Wilshire Adult Day Healthcare	3921 Wilshire Blvd. Los Angeles, CA 90010	.00	None
5, 141	Partners Adult Day Healthcare	7362 Santa Monica Blvd. West Hollywood, CA 90046	.00	None
5, 146	Sunrise Adult Day Health Center	7014 W. Sunset Blvd. Los Angeles, CA 90028	.19	None
1, 57	Sunbridge Care Center for Santa Monica	1321 Franklin Street Santa Monica, CA 90404	.15	None



## **6.0 MITIGATION MEASURES**

This section identifies mitigation measures specific to parklands and community facilities, where appropriate for the identified operational and construction-related impacts.

### **6.1 Mitigation for Operational Impacts**

Project operations would not result in adverse impacts to parks and community facilities. No mitigation is required.

### **6.2 Mitigation for Construction Impacts**

This section proposes specific mitigation measures to minimize construction impacts to parklands and community facilities. Such measures include short-term functional replacement, as well as coordination efforts between agencies, any agreements, and/or further project development effort related to mitigation.

To mitigate potential construction impacts to parklands and community facilities from Build Alternatives 1, 2, 3, 4, and 5 and MOSs 1 and 2 that could occur from short-term functional replacement, Metro will:

Inform the school districts and private school institutions along the alignment of changes to Metro bus routes, school bus routes, and pedestrian crossings prior to construction;

Work with transportation, police, fire, public works, and community services departments of jurisdictions along the alignment to implement mutually agreed upon measures, such as posting of clearly marked signs, pavement markings, lighting as well as implementing safety instructional programs to increase the safety of pedestrians, particularly in the vicinity of schools. Measures will be developed to conform to Metro Rail Transit Design Criteria and Standards, Fire/Life Safety Criteria, Volume IX;

Provide at no charge to school districts an instructional rail safety program with materials to all affected elementary and middle schools;

Contractors will be required to control traffic during construction by following the “Work Area Traffic Control” Manual (most recent edition) prepared by the City of Los Angeles; Standard Plan S-610-12, “Notice to Contractors-Comprehensive” (most recent edition), prepared by Bureau of Engineering, City of Los Angeles; and “Standard Specifications for Public Works Construction” (most recent edition). Comparable standards would be enforced for work conducted in the other jurisdictions along the alignment;

Unless unforeseen circumstances dictate, no designated major or secondary highway will be closed to vehicular or pedestrian traffic. No collector or local street or alley will be completely closed preventing local vehicular or pedestrian access to residences, businesses, or other establishments;

Provide an on-going informational program to nearby medical facilities, senior centers, and parks if requested by these facilities to increase safety. The program will be similar to that described for the schools except the information and materials provided will be geared toward senior citizens.



For additional construction mitigation measures, refer to Task 14.1.18 Construction and Mitigation Technical Report.

### **6.3 CEQA Determination**

A project would normally have a significant impact on parklands and public services if it would<sup>19</sup> result in substantial adverse physical impacts associated with the provision of new or physically altered governmental facilities, the need for new or physically altered governmental facilities, the construction of which could cause significant environmental impacts, in order to maintain acceptable service ratios, response times, or other performance objectives for any public services. The list of public services includes fire and police protection, schools, parks, and other public facilities. In addition to these impacts, a project would normally have a significant impact on parklands if it would:

- Increase the use of existing neighborhood and regional parks or other recreational facilities such that substantial physical deterioration of the facility would occur or be accelerated
- Include recreational facilities or require the construction or expansion of recreational facilities, which might have a physical effect on the environment

Likewise, a project would normally have a significant impact on public facilities if it would impair implementation of or physically interfere with an adopted emergency response plan or emergency evacuation plan.

No parklands would be displaced or pedestrian and vehicular access to parklands disrupted; therefore, no impacts would occur.

Potential construction impacts on parklands and community facilities would be less than significant after mitigation measures are implemented.

### **6.4 Impacts Remaining After Mitigation**

Potential impacts on parklands and community facilities would be less than significant after mitigation measures are implemented.

---

<sup>19</sup> See L.A. California Environmental Quality Act Thresholds Guide, which addresses impacts to public services under Section K.

## References

- City of Beverly Hills. 2008. Draft General Plan. Available at: [http://www.beverlyhills.org/services/planning\\_division/plan/2008\\_draft\\_general\\_plan.asp](http://www.beverlyhills.org/services/planning_division/plan/2008_draft_general_plan.asp)
- City of Los Angeles. 1973. General Plan—Open Space Plan. Available at: [http://cityplanning.lacity.org/Code\\_Studies/GeneralElement/openspaceelement.pdf](http://cityplanning.lacity.org/Code_Studies/GeneralElement/openspaceelement.pdf)
- City of Los Angeles. 1973. General Plan—Public Recreation Plan. Available at: [http://cityplanning.lacity.org/Code\\_Studies/GeneralElement/PublicRecreationPlan.pdf](http://cityplanning.lacity.org/Code_Studies/GeneralElement/PublicRecreationPlan.pdf)
- City of Los Angeles. 2001. General Plan Framework Land Use. Available at: <http://cityplanning.lacity.org/cwd/framwk/chapters/03/03.htm>
- City of Los Angeles. 2001. General Plan Framework Open Space and Conservation. Available at: <http://cityplanning.lacity.org/cwd/framwk/chapters/06/06.htm>
- City of Los Angeles. 2001. General Plan Framework Infrastructure and Public Services. Available at: <http://cityplanning.lacity.org/cwd/framwk/chapters/09/09.htm>
- City of Los Angeles. 2001. Wilshire Community Plan. Available at: <http://cityplanning.lacity.org/complan/pdf/wilcptxt.pdf>
- City of Los Angeles. 1999. Westwood Community Plan. Available at: <http://cityplanning.lacity.org/complan/pdf/wwdcptxt.pdf>
- City of Santa Monica. 2009. Draft General Plan Land Use and Circulation Element. Available at: <http://www.shapethefuture2025.net/>
- City of Santa Monica. 1997. General Plan Open Space Element.
- City of West Hollywood. 2004. General Plan, Section 1.0 Land Use and Urban Design; Section 2.0 Public Open Space Urban Design; Section 7.0 Education and Cultural; Section 8.0 Public Safety; Police and Fire; Section 9.0 Parks and Recreation.
- County of Los Angeles. 2008. Draft General Plan, Chapter 3 Land Use Element; Chapter 6 Conservation & Open Space Element; Chapter 9 Public Services and Facilities Element. Available at: <http://planning.lacounty.gov/generalplan#anc-download>
- Personal communication between Glenn DeBerg and Captain Tom Richards at 2:36pm on 03/10/10.
- Personal communication between Glenn DeBerg and Captain Rick McLaren at 3:40pm on 03/10/10.
- Personal communication between Glenn DeBerg and Fernando Romero at 2:26pm on 03/10/10.
- Personal communication between Glenn DeBerg and Roger Askin at 2:20pm on 03/10/10.
- Personal communication between Glenn DeBerg and Sergeant Bowman at 1:25 pm on 04/09/10.
- Personal communication between Glenn DeBerg and Commander Goldman at 1:45 pm on 04/09/10.