

## 4.0 ARCHAEOLOGICAL RESOURCES

### 4.1 Introduction

This report examines the effected archaeological resource impacts associated with the Project.

Construction activities required to implement the APE could result in disturbance or potential destruction of known or unknown archaeological resources. Disturbance and the potential for destruction to archaeological resources shall be adequately identified and appropriately mitigated.

### 4.2 Regulatory Framework

Several federal, State, and local laws apply to the identification, treatment, and protection of archaeological resources. Because the Project would receive federal funds, the following laws and regulations are applicable.

#### 4.2.1 Federal

##### 4.2.1.1 National Environmental Policy Act (NEPA)

NEPA addresses Federal government actions in relation to all aspects of the human environment, which is defined as the “natural and physical environment and the relationship of people with that environment” (40 CFR 1508.14). NEPA requires consideration of any potentially adverse environmental effects that could result from proposed federal action.

##### 4.2.1.2 National Historic Preservation Act (NHPA)

The NHPA establishes a general policy for supporting and encouraging the preservation of prehistoric and historic resources for present and future generations. Under NHPA, Section 106 requires that Federal agencies take into account the effects of their actions on historic properties, including traditional cultural properties, which refers to the beliefs, customs, and practices of a living community of people that have been passed down through the generations, usually orally or through practice. Given this perspective, a historic property’s traditional cultural significance is derived from the role it plays in a community’s historically rooted beliefs, customs, and practices (National Register Bulletin 38:1998:1).

Section 106 declared a national policy of historic preservation and encourages such preservation. It established an Advisory Council on Historic Preservation (ACHP) and provided procedures for the federal agency to follow if a federal undertaking could affect a property included or eligible for inclusion in the National Register of Historic Places (NRHP). The ACHP’s developed 36 Code of Federal Regulations (CFR) Part 800 helps define how federal agencies could meet their statutory responsibilities under the NHPA.<sup>3</sup>

---

<sup>3</sup> Advisory Council on Historic Preservation. March 24, 2006 -updated. Section 106 Regulations: 36 CFR Part 800—Protection of Historic Properties. Available at: <http://www.achp.gov/work106.html>.

#### 4.2.1.3 National Register of Historic Places (NRHP)

The NRHP is the official list of historic properties recognized for their significance and deemed worthy of preservation. The NRHP Criteria for Evaluation offers guidance for federal, state, and local governments, private groups, and citizens to identify the nation's cultural resources and to indicate what properties should be considered for protection from destruction or impairment. As established in the NHPA, to be listed in the NRHP, or to be determined eligible for listing, properties must meet certain criteria for historic or cultural significance. Qualities of significance may be found in aspects of American history, architecture (interpreted in the broadest sense to include landscape architecture and planning), archaeology, engineering, and culture.

For archeological resources, a property is eligible for the NRHP if it is significant under one or more of the following criteria:

- It is associated with events that have made a significant contribution to the broad patterns of our history.
- It is associated with the lives of persons significant in our past.
- It has yielded, or may be likely to yield, information important in prehistory or history.<sup>4</sup>

#### 4.2.2 State

##### 4.2.2.1 California Environmental Quality Act, Section 15064.5(c): “Determining the Significance of Impacts on Historical and Unique Archaeological Resources”<sup>5</sup>

CEQA applies to effects on archaeological resources:

- When a project will impact an archaeological site, a lead agency shall first determine whether the site is an historic resource,
- If a lead agency determines that the archaeological site is an historical resource, it shall refer to the provisions of Section 21084.1 of the Public Resources Code, and this section, Section 15126.4 of the Guidelines, and the limits contained in Section 21083.2 of the Public Resources Code do not apply.
- If an archaeological site does not meet the criteria defined in subdivision (a), but does meet the definition of a unique archaeological resource in Section 21083.2 of the Public Resources Code, the site shall be treated in accordance with the provisions of Section 21083.2. The time and cost limitations described in Public Resources Code Section 21083.2 (c-f) do not apply to surveys and site evaluation activities intended to determine whether the project location contains unique archaeological resources.
- If an archaeological resource is neither a unique archaeological nor an historical resource, the effects of the project on those resources shall not be considered a significant effect on the environment. It shall be sufficient that both the resource and

<sup>4</sup> National Park Service. 1998. National Register Bulletin, 15: How to Apply the National Register Criteria for Evaluation. Washington D.C.: National Park Service. Available at: <http://www.cr.nps.gov/nr/publications/bulletins/nrb15/>.

<sup>5</sup> California Resources Agency. 11 December 2003. California Environmental Quality Act, Chapter 2.6, '21084.1: "Historical Resource; Substantial Adverse Change." Available at: [http://ceres.ca.gov/ceqa/stat/Ch\\_2-6.html](http://ceres.ca.gov/ceqa/stat/Ch_2-6.html).

the effect on it are noted in the EIR, but they need not be considered further in the CEQA process.

In addition, Section 15064.5(d) addresses the process of treatment of Native American human remains and the general prohibition of disinterring, disturbing, or removing human remains from any location other than the dedicated cemetery.

#### **4.2.2.2 California Penal Code, Section 622.5**

Section 622.5 of the California Penal Code establishes a misdemeanor penalty for injuring or destroying objects of historical or archaeological interest located on public or private lands, but specifically excludes the landowner.<sup>6</sup>

#### **4.2.2.3 California Public Resources Code, Section 5097.5**

Section 5097.5 of the California PRC establishes a misdemeanor penalty for the unauthorized disturbance or removal of archaeological, historical, or paleontological resources located on public lands.<sup>7</sup>

#### **4.2.2.4 California Register of Historic Resources (CRHR)**

The CRHR is used as a guide by state and local agencies, private groups, and citizens to identify the state's cultural and historical resources, including archaeological resources, and to indicate which properties are to be protected, to the extent prudent and feasible, from substantial adverse change. The CRHR, as instituted by the California PRC, automatically includes all California properties already listed in the NRHP and those formally determined to be eligible for the NRHP. The CRHR also may include various other types of resources that meet the criteria for eligibility, including the following:

- It is associated with events that have made a significant contribution to the broad patterns of California's history and cultural heritage.
- It embodies the distinctive characteristics of a type, period, region, or method of construction, or represents the work of an important creative individual, or possesses high artistic values.
- It is associated with the lives of persons important in our past.
- It has yielded, or may be likely to yield, information important in prehistory or history.

#### **4.2.2.5 State Historic Resources Commission and the Office of Historic Preservation**

In accordance with state law (California PRC Section 5020.4), the primary responsibility of the State Historic Resources Commission (SHRC) is to review applications for listing historic and archaeological resources on the NRHP, the CRHR, and the California Historical Landmarks and California Points of Historical Interest registration programs.

The SHRC is also charged with the responsibilities of conducting a statewide inventory of historical, including archaeological, resources and maintaining comprehensive records of

<sup>6</sup> State of California. California Penal Code, Section 622.5. Available at: <http://www.leginfo.ca.gov/calaw.html>

<sup>7</sup> State of California. California Public Resources Code, Section 5097.5. Available at: <http://www.leginfo.ca.gov/cgi-bin/waisgate?WAIISdocID=60334228069+12+0+0&WAIISaction=retrieve>.

these resources; and establish policies and guidelines for a comprehensive statewide historical, including archaeological, resources plan, among others.

The Office of Historic Preservation (OHP) is the governmental agency primarily responsible for the statewide administration of the historic preservation program in California. The chief administrative officer for the OHP is the State Historic Preservation Officer (SHPO). The SHPO is also the executive secretary of the SHRC. The mission of the OHP and the SHRC, in partnership with the people of California and governmental agencies, is to preserve and enhance California’s irreplaceable historic heritage as a matter of public interest so that its vital legacy of cultural, educational, recreational, aesthetic, economic, social, and environmental benefits will be maintained and enriched for present and future generations.<sup>8</sup>

The OHP is responsible for carrying out its mission by meeting the following goals:

- Identifying, evaluating, and registering historic properties, including archeological sites
- Ensuring compliance with federal and state regulatory obligations
- Cooperating with traditional preservation partners while building new alliances with other community organizations and public agencies
- Encouraging the adoption of economic incentives programs designed to benefit property owners
- Encouraging economic revitalization by promoting a historic preservation ethic through preservation education and public awareness, and, most significantly, by demonstrating leadership and stewardship for historic preservation in California

### **4.2.3 Regional**

Archaeological resource (cultural resource) regulations are articulated in both regional and local plans. The Southern California Association of Governments (SCAG) defines cultural resources as well as principles for the treatment of identified resources.

SCAG serves as the Metropolitan Planning Organization (MPO) for the region. The SCAG Regional Transportation Plan (RTP), updated in 2008, and the Regional Comprehensive Plan and Guide (RCPG), currently being updated, are tools used for identifying the transportation priorities of the Southern California region. The policies and goals of the RTP and RCPG that focus on the need to identify and treat cultural resources within the region will be described with respect to their relation to archaeological resources.

### **4.2.4 Local**

#### **4.2.4.1 City of Los Angeles**

This section identifies cultural resource objectives and programs within the City of Los Angeles and the Office of Historic Resources (OHR). It describes the City of Los Angeles

---

<sup>8</sup> Office of Historic Preservation. 12 June 2002. “About OHP.” Available at: [http://ohp.parks.ca.gov/default.asp?page\\_id=1066](http://ohp.parks.ca.gov/default.asp?page_id=1066).

Historic Period Overlay Zones (HPOZ), and City designated Historic Cultural Monuments (HCM).

The HPOZ provision of the Los Angeles Municipal Code (LAMC) Section 12.20.3 contains procedures for the designation and protection of areas that have structures, natural features, or sites of historic, architectural, cultural, or aesthetic significance. 24 areas of the city are presently classified as HPOZs, and 16 other areas are under study.<sup>9</sup>

#### **4.2.4.2 City of West Hollywood**

The City of West Hollywood has a Commission to assist the Planning Commission in decisions that may affect historic and cultural resources. The powers and duties of the Commission are outlined in West Hollywood Municipal Code Section 2.40.100 et seq. and include periodically updating the City’s Historic Resources Survey and recommending to the Planning Commission and City Council the designation of cultural resources including structures, improvements, natural features, landmarks, sites, objects, historic districts, multiple resource or thematic groupings of structures sharing common characteristics or uses.<sup>10</sup>

#### **4.2.4.3 City of Beverly Hills**

The City of Beverly Hills General Plan Update outlines the Cities policies for identifying and protecting cultural resources within the city. 11

As defined by the Beverly Hills Municipal Code (Section 10-3-3202-Definition of Landmark), a “historical or cultural landmark” is any site (including significant trees or other plant life located thereon), building, or structure of particular historic or cultural significance to the City, such as historic structures or sites in which the broad cultural, political, economic, or social history of the nation, state, or community is reflected or exemplified, or which are identified with historic personages or with important events in the main currents of national, state, or local history, or which embody the distinguishing characteristics of an architectural type specimen, inherently valuable for a study of a period style or method of construction, or a notable work of a master builder, designer, or architect whose individual genius reflects his age.

#### **4.2.4.4 City of Santa Monica**

The City of Santa Monica’s Historic Preservation Element of the General Plan contains ordinances for the preservation of historic properties (2002). The City of Santa Monica is strongly committed to historic preservation. The commitment is reflected in the programs and policies of the City including a Landmarks and Historic Districts Ordinance, three major historic resource surveys and two survey updates conducted since 1982, an established Landmarks Commission, and the recognition of the City by the State Office of Historic Preservation as a Certified Local Government.<sup>12, 13</sup>

---

<sup>9</sup> [preservation.lacity.org/hpoz](http://preservation.lacity.org/hpoz), [preservation.lacity.org/hpoz/proposed](http://preservation.lacity.org/hpoz/proposed)

<sup>10</sup> <http://www.weho.org/index.cfm/fuseaction/nav/navid/372/>

<sup>11</sup> <http://www.parks.ca.gov/pages/1069/files/state%20plan-fd.pdf>

<sup>12</sup> [http://www01.smgov.net/planning/planningcomm/2006\\_07\\_HRI\\_Update.htm](http://www01.smgov.net/planning/planningcomm/2006_07_HRI_Update.htm)

<sup>13</sup> <http://www01.smgov.net/planning/planningcomm/historicpreserve.html>

**4.2.4.5 County of Los Angeles**

Cultural resources within Los Angeles County include historic buildings, structures, artifacts and sites. They also include districts of historic, architectural, archaeological, or paleontological significance. Recognized resources are important parts of the built and natural environments within Los Angeles County.<sup>14</sup>

Underneath the Goal C/OS 12 of the County of Los Angeles is the protection of cultural heritage resources goal. There are four key policies. The first one is Policy C/OS 12.1, it supports an inter-jurisdictional collaborative system that protects and enhances the County's cultural heritage resources. The second one is Policy C/OS 12.2; it supports initiatives that improve the effectiveness of the Los Angeles County Landmarks Commission and the preservation of historic buildings. The third policy is C/OS 12.3, and it ensures proper notification procedures to Native American tribes in accordance with Senate Bill 18 (2004). And finally Policy C/OS 12.4 promotes public awareness of the County's cultural heritage resources.<sup>15</sup>

**4.2.4.6 Specific Plans**

There are no Specific Plans within the project area that address cultural or historic resources.

**4.2.4.7 Methodology**

This section summarizes the methodology of the research efforts undertaken for the project, such as the collection and review of:

- Record search results from the South Central Coastal Archaeological Information Center (SCCIC)
- Sanborn maps
- Historic topographic maps
- Historic aerial photographs
- Previously prepared environmental documentation (Metro Library)
- Coordination with local Offices of Historic Resources.

**4.2.4.8 Field Investigation Methodology**

Prior to implementation of field efforts, an archaeological Area of Potential Effect (APE) was established for the project. An APE is defined as, "the geographic area or areas within which an undertaking (project, activity, program or practice) may cause changes in the character or use of any cultural resources present."<sup>16</sup> For the purposes of the project, a radius of 100-feet was established along the alignment, and a 500-foot radius for all station locations. The APE was determined by reviewing the project's engineering

---

<sup>14</sup> Los Angeles County. 2007. Draft General Plan Update 2007. Available at: [http://planning.lacounty.gov/assets/upl/project/gp\\_2007-draft.pdf](http://planning.lacounty.gov/assets/upl/project/gp_2007-draft.pdf), page 138

<sup>15</sup> Los Angeles County. 2007. Draft General Plan Update 2007. Available at: [http://planning.lacounty.gov/assets/upl/project/gp\\_2007-draft.pdf](http://planning.lacounty.gov/assets/upl/project/gp_2007-draft.pdf), page 140

<sup>16</sup> NRCS. 2010. Cultural Resources Training Series Part 1. Glossary of Terms. Available at: <http://elearning.sc.egov.usda.gov/courses/culturalresources/glossary.html>

drawings and ascertaining the areas to be disturbed by construction and operation activities. (See APE Map Set—Appendix A)

Archival research was conducted to determine the nature and substance of existing documentation on archaeological resources within the APE. Research was conducted at the South Central Coastal Information Center (SCCIC) housed at California State University, Fullerton (CSUF) for known archaeological sites and previously conducted surveys within a .25-mile radius of the APE. The search also included a review of the Historic Property Data File, the California Register of Historic Resources (CRHR), National Register of Historic Places (NRHP), and State and local landmarks. In addition, the Los Angeles County Tax Assessor's Office of early land ownership records was searched.

A Phase I Archaeological Survey was conducted along the proposed Archaeological Area of Potential Effect (APE) using standard 15-meter transects where feasible. The Phase I archaeological survey of the project study area was conducted to provide data about the presence, absence, distribution, surface condition and potential significance of archaeological resources. This study included an assessment of the project area for the presence of prehistoric and historic archaeological resources.

Most of the APE encompassed a built environment, which precluded the observation of the ground surface, construction methods, materials, and surface ruptures. Therefore, structural built dates were noted and used to analyze the level of subsurface disturbance and the likelihood of in-situ deposits. The staging areas were also surveyed throughout the alignment. In addition, all open-space and exposed surface soils were inspected for the presence and indication of cultural resources. Portions of the APE were not surveyed because the survey crew was not granted access to private property. Private property was observed and photographed, but only from the edge of the roadway. The survey was conducted by URS Archaeologists Laurie Solis, M.A., and Nathan Orsi, B.A. The survey was conducted from June 17 to June 18 2009; June 22 to June 25, 2009; June 30, 2009, July 2, 2009, January 13, 2010; February 10, 2010; February 17, 2010; March 18, 2010; March 25, 2010. A preliminary predictive model feasibility study was undertaken by URS Archaeologist Mark Neal, M.A. in August of 2009.

Any discovered cultural resources were mapped and recorded with the South Central Coastal Information Center (SCCIC). Previously recorded prehistoric and historic sites were revisited by the survey crew and mapped and re-recorded in a similar manner, where feasible. Surface integrity of all such resources visited during the field study was evaluated for evidence of disturbance or degradation.

Potential disturbance or damage to identified archaeological resources was determined by the relation to the project alignment alternatives and construction methods. Avoidance options were offered where appropriate. Where avoidance was not deemed possible, subsequent mitigation activities were identified, potentially including more detailed documentation (evaluation) and, in some instances, data recovery.



**4.2.4.9 Agency Coordination Efforts**

Agency coordination was undertaken with affected cities and the County. Knowledge concerning cultural resources in the respective jurisdictions was requested and coordination efforts focused on the identification of cultural resources within the project area.

**City of Los Angeles**

Coordination efforts have been undertaken with the City of Los Angeles to determine the presence of historic properties that may be affected by the APE. A letter was sent to the city in July 2009 requesting information. A meeting was held with the city on January 7, 2010 in which the city provided a list of properties that has been identified as potentially significant.

**Native American Heritage Commission**

A Sacred Lands Record Search with the California Native American Heritage Commission (NAHC) was undertaken for knowledge of sacred sites or cultural resources that may be affected by the APE. The request was sent via facsimile on May 28, 2009 by Laurie Solis, M.A., an archaeologist with the URS Corporation. The response from the NAHC in Sacramento, CA was sent on June 3, 2009 as a facsimile.

The NAHC recommends early communication with Native American tribes in order to avoid unforeseen archaeological discoveries once the project has started. Sometimes the only way to know where specific sites are located is to talk to the people in the tribe, because certain things are only recorded as oral history, so there might be no way to know where specific sites are with just a record search.

The NAHC file search indicated the presence of Native American cultural resources within one half mile of the APE. The proposed alignments were indicated to have Native American cultural resources that need to be taken into consideration.

The NAHC's main concern is that wherever possible a policy of avoidance should be instituted to preserve the fragile state of uncovered archaeological resources. If any human remains were to be found action should be taken as per CEQA regulations, Public Resources Code Section 5097.98 and Health and Safety Code Section 7050.5, unless the remains are located within an already designated cemetery. The NAHC also noted that within the environmental documents created for the project the aforementioned topics should be discussed.

Please see Appendix A for a complete record of coordination efforts, including correspondence noted above.

The NAHC provided a list of individuals who may have knowledge pertaining to the APE. The individuals identified by the NAHC are Ron Andrade, Cindi Alvitre, John Tommy Rosas, Anthony Morales, Robert Dorame, Felicia Sheerman, and Bernie Acuna. Letters requesting information regarding the presence of sacred sites or cultural resources within the study area were sent via certified mail to all of the above individuals identified by the NAHC, with the exception of John Tommy Rosas; who received an email as opposed to a letter because no address was listed for him in the NAHC response. The letters were followed up by phone-calls to the notified Native American



individuals/groups and all coordination efforts were documented. See Appendix A for complete documentation of the NAHC coordination process.

Anthony Morales, John Tommy Rosas, and Ron Andrade responded with questions and comments. Mr. Rosas wrote several emails asking procedural questions, objecting to the project and what was termed as its defective process, objecting to alleged violations to their indigenous rights, and objecting to the growth inducing negative impacts under CEQA. His first email was sent on July 27, 2009 and he continued communication through August 4, 2009. He objected to the claimed land titles by project (owners) because it is native land and thus the land claims are illegal. He wanted to see construction drawings of excavations when they become available.

On July 30, 2009 Mr. Morales had a phone conversation with Laurie Solis, (M.A., Archaeologist) about wanting to preserve archaeological resources as part of this Metro project. He also discussed the importance of a Native monitor on-site during excavations. Culturally sensitive areas near the La Brea Tar Pits and Century City were discussed because of previously identified village sites in those areas. Mr. Morales was interested in how he could stay involved, and it was agreed that he would be kept informed via email. Mr. Morales stated that he had previous negative experiences with metro.

On July 31, 2009, Mr. Andrade called Nathan Orsi, (B.A., URS Archaeologist) to inform him that he had no concerns regarding cultural resources or Native American sacred sites. Mr. Andrade said that he usually defers to the Gabrielino Tribe and that he would coordinate with Mr. Morales to see if there were any concerns.

#### **4.2.4.10 California Office of Historic Preservation**

The Office of Historic Preservation (OHP) is the governmental agency primarily responsible for the statewide administration of the historic preservation program in California. The chief administrative officer for the OHP is the State Historic Preservation Officer (SHPO). The SHPO is also the executive secretary of the SHRC. The mission of the OHP and the SHRC, in partnership with the people of California and governmental agencies, is to preserve and enhance California's irreplaceable historic heritage as a matter of public interest so that its vital legacy of cultural, educational, recreational, aesthetic, economic, social, and environmental benefits will be maintained and enriched for present and future generations.<sup>17</sup>

Coordination with the OHP was undertaken throughout the cultural resources analysis. A letter was submitted to OHP in June 2009 on behalf of FTA/MTA to initiate identification of historic properties. In addition, on August 17, 2009 URS cultural staff Laurie Solis, M. A. and Jeremy Hollins, M.A. met with OHP staff in Sacramento. Also in attendance were (PB) (Natalie Lindquist, Bill Soule, Tristan Tozer, Susan Killen) and Roger Martin (MTA). Additional efforts were concluded in January and February of 2010. Meeting minutes and OHP letters are included in the Historic Resources Report.

---

<sup>17</sup> Office of Historic Preservation. 12 June 2002. "About OHP." Available at: [http://ohp.parks.ca.gov/default.asp?page\\_id=1066](http://ohp.parks.ca.gov/default.asp?page_id=1066).

Coordination was undertaken with the OHP concerning the APE. Archaeological and Architectural APE maps depicting the proposed alignment and alternatives were submitted to the OHP along with a coordination letter describing the project.

Coordination with the OHP concerned cultural resource identification methods, the effect the project may have on cultural resources, and potential mitigation measures to avoid or reduce potential project effects to cultural resources.

### **4.3 Affected Environment**

#### **4.3.1 Natural Setting**

##### **4.3.1.1 Natural Environment**

Present day Los Angeles is most akin to a Mediterranean climate and averages approximately 320 days of sun each year. There is very little precipitation, averaging around 40 days of rainfall each year, approximately 15 inches annually. Rainfall usually happens during the spring and winter months. From November to April temperatures are much milder, and rain can be expected during that time. Average highs range from the high sixties and low seventies, with the average lows ranging from the high forties to the low fifties. Winter can bring temperatures as low as 40 degrees or as high as eighty on occasion.

Temperatures can vary significantly from the coast to inland areas, sometimes as much as eighteen degrees, and thus the Los Angeles region is comprised of microclimates. In late spring and early summer fogginess in the morning is typical, but by mid-day it usually burns off and the sun comes out.

Because of the diverse nature of Los Angeles environments, there are a wide variety of plant species. The mountains, along with the wetlands and the beaches make for a myriad of vegetation. Coastal Sage scrub is the predominant environment, made up of primarily chaparral. The California poppy, Coast Live Oak, toyon, matijila poppy, and the Giant Wildrye are some of the native plants that can be found in and around the Los Angeles area.<sup>18</sup>

The temperature in and around Rancho La Brea during the Pleistocene seems to be similar to the present day climate. There is a lack of fossilized evidence of animals from cold weather climates and desert or tropical environments, which suggests a more suitable place for a broad range of animals. There was a wide variety of fish and smaller herbivores that suggest an ecosystem that was capable of sustaining the large carnivores that have subsequently located in the tar pits. The similarity of the types of species alive today and those that have been fossilized perpetuates the theory that the climate was comparable to today. There are not many plants that have been preserved but those that were indicate that winters were most likely closely related to modern winters, and the summers were milder but possibly had a higher humidity than the dry heat that is so typical of Los Angeles today.<sup>19</sup>

<sup>18</sup> Wikipedia Online Encyclopedia. Accessed February 24, 2010. Climate and Flora. Available at: [http://en.wikipedia.org/wiki/Los\\_Angeles](http://en.wikipedia.org/wiki/Los_Angeles)

<sup>19</sup> Stock, Chester. 2001. 7<sup>th</sup> ed. Rancho La Brea, A record of Pleistocene life in California. Natural History Museum of Los Angeles County. Pages 10-13.

#### 4.3.1.2 Physiography

The Study Area is located near the northern edge of the Los Angeles Basin (Basin), a short distance southeast of the Elysian Park Hills. The Elysian Park Hills, along with the Repetto Hills to the north and east of the Study Area, comprise a group of low hills at the northern edge of the Basin. The highest point in this line of hills is Mount Washington, at an elevation of 846 feet. These hills and adjacent lowlands presently comprise a heavily populated portion of metropolitan Los Angeles.<sup>20</sup>

The Los Angeles Basin is a geologic area underlain by a thick (several thousand feet) sequence of Tertiary age sedimentary rocks. From oldest to youngest, these rocks are represented by the Topanga Formation, Puente Formation (also known as the Monterey Formation), and Fernando Formation<sup>21</sup>. Each formation is comprised of rock layers alternating between sandstone, conglomerate, and siltstone. Tertiary marine sedimentary rocks are exposed in the Elysian Park and Repetto Hills.

Younger Quaternary (Holocene) alluvial fan deposits cover the bedrock formations in many areas, such as the Study Area. These deposits consist predominantly of sand and silt, along with smaller amounts of gravel and clay. Descriptions of materials encountered in most test boreholes, for unrelated previous projects at various locations throughout the Los Angeles Quadrangle, report loose to moderately dense sand. Where saturated within 40 feet below the ground surface, these sedimentary units are considered susceptible to liquefaction. These young Quaternary units underlie the Study Area. Most soils within the Study Area have been modified and disturbed by grading and earthmoving associated with previous land uses<sup>22</sup>. Therefore, it is unlikely that undisturbed native soils are present in the Study Area. Available maps and reports suggest that most alluvial material in the Study Area is predominantly sand and silt. Smaller amounts of gravel and clay are also known, along with cobbles and boulders. The high percentage of granular material and low clay content of these deposits and associated soils are not generally suggestive of significant unstable geologic conditions.

The presence of oil sands, shale, and sandstones underneath the Pleistocene strata at Rancho La Brea is the reason that the asphalt is created. The irregularity of the landscape could have also played a role in the increased amount of the fossiliferous asphalt filling in depressions and creating pools six or seven feet square. It has also come to the attention of researchers that the asphalt played a role in forming new land, in one instance, the presence of an in situ juniper tree had become surrounded with sand, clay, and asphalt. The tree roots were in clay, so it is inferred that at one time the tree had been alive and well (Figure 4-1).

#### 4.3.2 Cultural Setting

##### 4.3.2.1 Regional Prehistory

Archaeological research in the Los Angeles County area has resulted in the development of a temporal scheme for regional prehistory. The temporal periods include: Early Man Horizon, 11,000 to 6,000 years before present (BP), the Milling Stone Horizon, ranging

<sup>20</sup> Lamar, D.L. 1970. U.S.G.S. Los Angeles Geologic Quadrangle Map.

<sup>21</sup> Dibblee, T.W. 1989. U.S.G.S. Los Angeles Geologic Quadrangle Map.

<sup>22</sup> California Department of Conservation Division of Mines and Geology [CDMG] 1998. Los Angeles.

between 6,000 and 1,000 BP, and the Late Prehistoric Horizon, AD 750 to AD 1769. Although specific dates are given, the beginning and end dates for each period are not rigid because technological innovations occurred at different times within this region.

The native ecological environment consisted of a large basin surrounded by the San Gabriel Mountains and river and stream drainages, which were prime locations for Native American food processing and village sites. Prehistoric archaeological sites are often covered by 3 or more feet of topsoil, often protecting sites even after an area has become highly urbanized, particularly in areas with shallow building foundations, parks, parking lots, and roads. However, prehistoric sites occasionally can be found on the surface in urbanized areas that have not been extensively disturbed. The following is a cultural chronology of the Native American habitation of Southern California. Various chronologies suggested for several regions of California have been published. However, all of these regional chronologies were based on William Wallace's version, with only minor changes. Wallace's 1955 chronology remains a standard cultural chronology for the prehistoric habitation of Southern California.

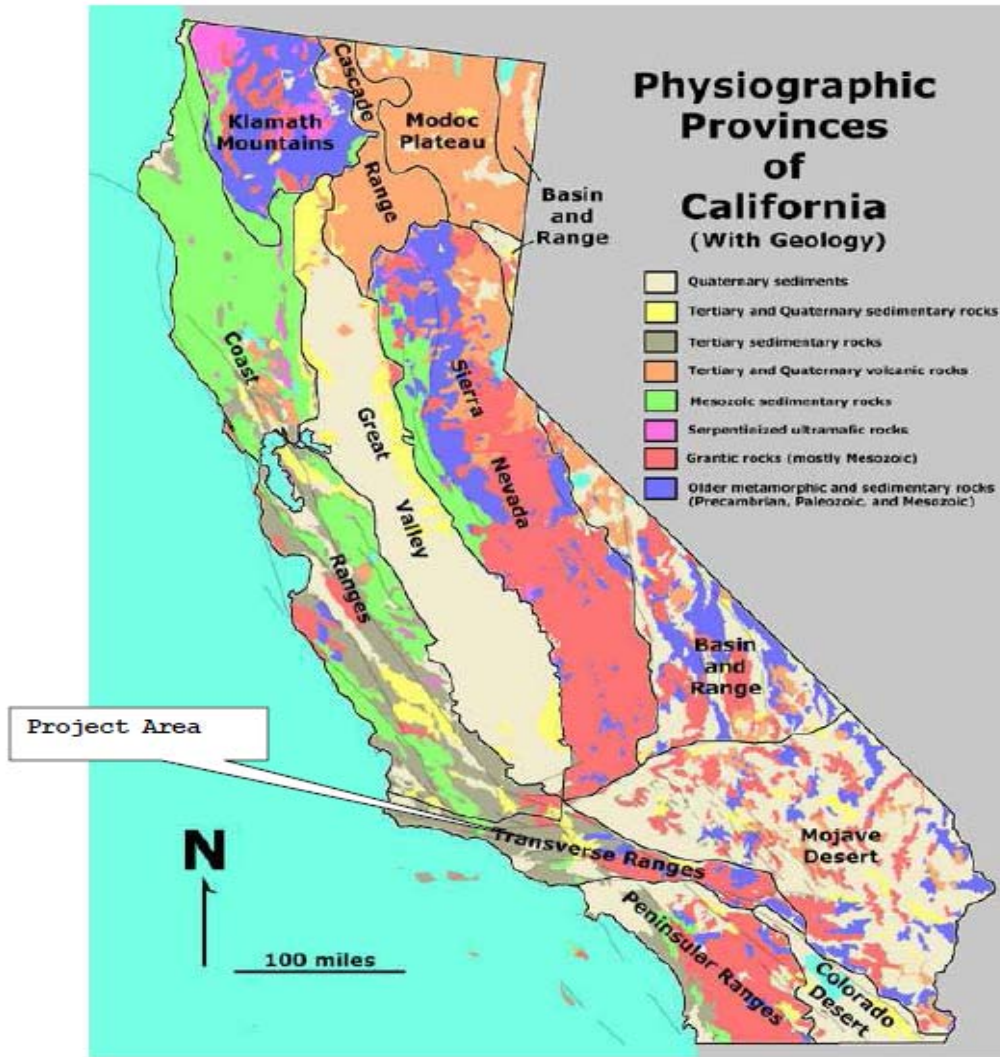


Figure 4-1  
Physiographic Map of the Project Area

Figure 4-1: Physiographic Map of the Project Area

**4.3.2.2 Early Man Horizon (ca 11,000 to 6,000 B.P.)**

From the end of the Pleistocene (approximately 11,000 years ago) to approximately 6,000 B.P., archaeological assemblages attributed to this horizon area are characterized by large projectile points and scrapers. The limited data available suggest that prehistoric populations focused on hunting and gathering, moving from region to region in small nomadic groups.

**4.3.2.3 Milling Stone Horizon (ca. 6,000 to 1,000 B.P.)**

The nature of the transition from the Early Man Horizon to the Milling Stone Horizon is unclear. This horizon is characterized by the appearance of hand-stones and milling-stones and dates between approximately 6,000 B.P. to 1,000 B.P. Artifact assemblages during the early Milling Stone period reflect an emphasis on plant foods and foraging subsistence systems. Inland populations generally exploited grass seeds, which became the primary subsistence activity. Artifact assemblages are characterized by choppers and scraper planes but generally lack projectile points. The appearance of large projectile points in the latter portion of the Milling Stone Horizon suggests a more diverse subsistence economy.

**4.3.2.4 Ethnography**

The ethnographic composition of the Study Area consists of the Tongva/Gabrielino Band of Mission Indians (Figure 4-1). This generally encompasses the time period of 1000 years B.P. to the present.

**The Tongva/Gabrielino**

The Tongva/Gabrielino are a Native American people who inhabited the area in and around Los Angeles, which they shared with the Tataviam people. *Tongva* means "people of the earth" in the Tongva language, a language in the Uto-Aztecan family. The Tongva are also often referred to as the Gabrieleño/Tongva or Gabrielino/Tongva tribe.

Following the Spanish custom of naming local tribes after nearby missions, they were called the Gabrieleño, Gabrieliño, or San Gabrieleño in reference to Mission San Gabriel Arcángel.

These Native Americans known as the Gabrieleño spoke a language that falls within the Cupan group of the Takic subfamily of the Uto-Aztecan language family. This language family is extremely large and includes the Shoshonean groups of the Great Basin. Given the geographic proximity of Tongva/Gabrieleño and Serrano bands living in the area and the linguistic similarities, ethnographers have suggested that they shared the same ethnic origins.<sup>23</sup> Correspondingly, these groups will be referred to as the Gabrieleño in this document. The Gabrieleño are considered one of the most distinctive tribes in all of California, occupying a large area that was bordered on the west by Topanga and Malibu, the San Fernando Valley, the greater Los Angeles basin, and the coastal strip south to Aliso Creek, south of San Juan Capistrano. Gabrieleño territory extended from the San Bernardino Mountains to the islands of Catalina, San Clemente, and San Nicolas and

<sup>23</sup> Kroeber, Alfred L. 1925. *Handbook of the Indians of California*. Bureau of American Ethnology Bulletin 78. Washington.



occupied most of modern day Los Angeles and Orange Counties, which is incredibly fertile land.<sup>24</sup>

Very little is known about early Tongva social organization because the band was not studied until the 1920s and had already been influenced by missionaries and settlers. Kroeber's (1925) work indicates that the Tongva were a hierarchically ordered society with a chief who oversaw social and political interactions both within the Tongva culture and with other groups. The Tongva had multiple villages ranging from seasonal satellite villages to larger more permanent villages. Resource exploitation was focused on village-centered territories and ranged from hunting deer, rabbits, birds, and other small game to sea mammals. Fishing for freshwater fish, saltwater mollusks, and crustaceans and gathering acorns and various grass seeds were also important. Fishing technology included basket fish traps, nets, bonefish hooks, harpoons, and vegetable poisons, and ocean fishing was conducted from wooden plank canoes lashed and asphalted together<sup>25</sup> (Figure 4-2).

Tongva houses were large, circular, thatched and domed structures of tulle, fern, or carrizo that were large enough to house several families.<sup>26</sup> Smaller ceremonial structures were also present in the villages and were used in a variety of ways. These structures were earth-covered, and different ones were used as sweathouses, meeting places for adult males, menstrual huts, and ceremonial enclosures (*yuva't*).

The coastal Tongva are among the few New World peoples who regularly navigated the ocean. They built seaworthy canoes, called *ti'at*, using planks that were sewn together, edge to edge, and then caulked and coated with either pine pitch or, more commonly, the tar that was available either from the La Brea Tar Pits or asphaltum that had washed up on shore from offshore oil seeps. The *ti'at* could hold as many as 12 people, their gear trade goods they were carrying, either along the coast or on one of the Channel Islands. The Tongva canoed out to greet Spanish explorer Juan Cabrillo when he arrived off the shores of San Pedro in 1542.

Modern place names with Tongva origins include: Pacoima, Tujunga, Topanga, Rancho Cucamonga, Azusa, and Cahuenga Pass. The name of their creation deity, Quaoar, has been used to name a large object in the Kuiper belt. A 2,656-foot summit in the Verdugo Mountains, in Glendale, has been named Tongva Peak. The Gabrieleno Trail is a 32-mile path through the Angeles National Forest.

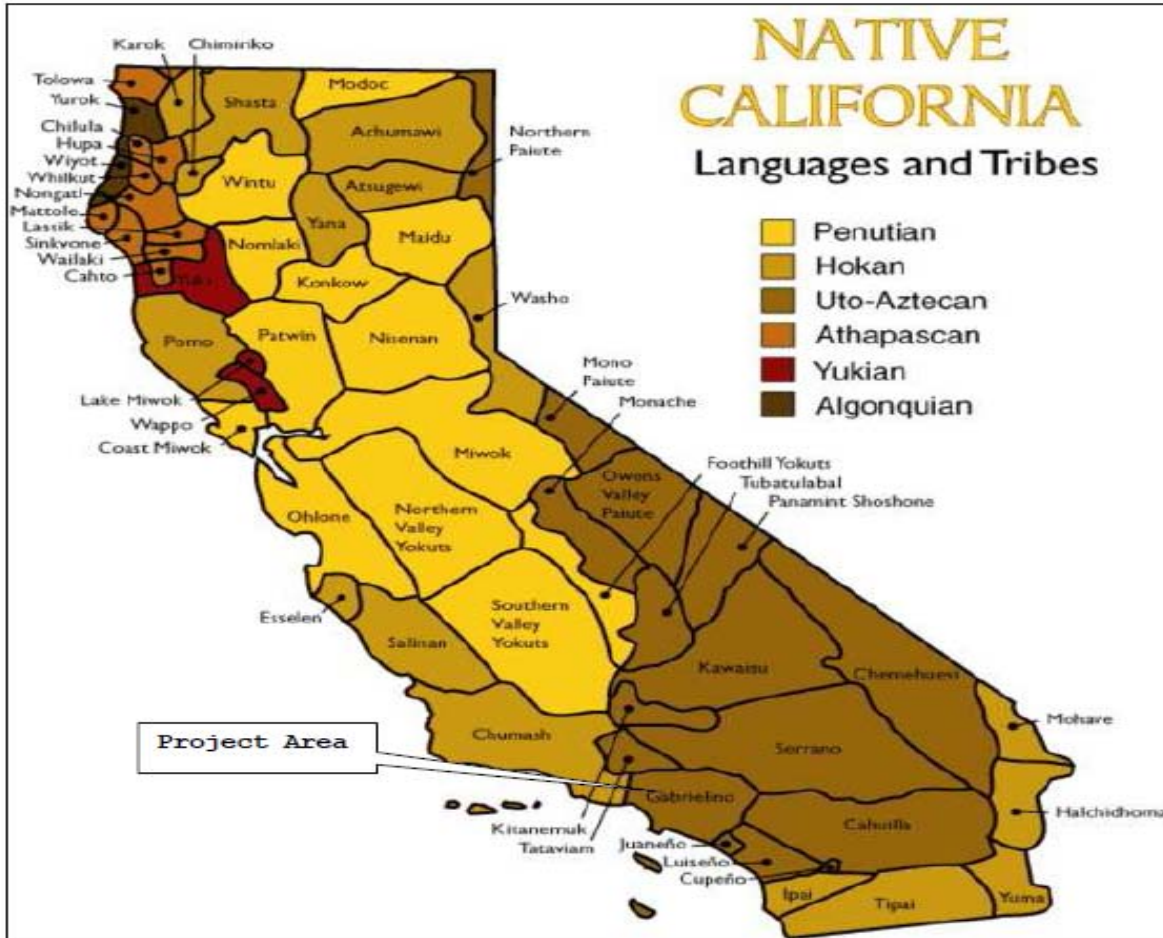
In the 1990s, Kuruvungna Springs, a natural spring located on the site of a former Tongva village on the campus of University High School in West Los Angeles, was revitalized due to the efforts of the Gabrielino/Tongva Springs Foundation. The spring, which produces 22,000 gallons of water each day, is considered by the Tongva to be one of their last remaining sacred sites and is regularly used for ceremonial events.

<sup>24</sup> Bean, L. and C. Smith. 1978. 'Gabrielino'. In *Handbook of North American Indians*, Volume 8, California. R.F. Heizer (ed.): 538—549. Washington DC: Smithsonian Institute Press.

<sup>25</sup> Blackburn, Thomas C. 1962-1963. Ethnohistoric Descriptions of Gabrielino Material Culture. *Annual Reports of the University of California Archaeological Survey* 5: 1-50. Los Angeles.

<sup>26</sup> Johnston, B.E. 1962. California's Gabrieliño Indians. Frederick Webb Hodge Anniversary Publication Fund, vol. VII. Los Angeles: Southwest Museum.





**Figure 4-2**  
Native American Culture Groups  
in relation to the Project Area

**Figure 4-2: Native American Culture Groups in Relation to the Project Area**

### 4.3.3 Historic Setting

#### 4.3.3.1 The Colonial Period (1542 to 1821)

Exploration of California first occurred in 1540 when a land expedition under the command of Hernando de Alarcon traversed inland along the Colorado River in an attempt to meet up with the party of Francisco Vasquez de Coronado, who was searching the Southwest for the legendary Seven Cities of Cibola (Gold). Two years later, Juan Rodriguez Cabrillo was commissioned by the Spanish government to investigate the

western shores of the newly acquired territory. His investigation was restricted to the southern California coast, with only brief stops onshore to gather water and supplies. The first documented description of Los Angeles County comes from Juan Rodriguez Cabrillo in 1542. Apparently, his ship made land fall at what is today San Pedro, taking on fresh water and other supplies. He did not explore the area, but sailed on.

During the early decades of the 19th century, independence groups sprang up throughout the Spanish Empire. Like the American colonists, the citizens of these Spanish colonies thought it was time for self-rule and abolition of the Viceroy system. At that time, California was considered a province of Mexico. Throughout the Spanish Period, California remained largely unsettled.

The Spanish arrival on the west coast of North America had one primary purpose: the search for the elusive “Northwest Passage” that would enable European merchants a quick route to markets of the Far East. In 1771, the San Gabriel Arcángel mission, located in the area that would later be called Los Angeles, was constructed to link the missions in Monterey, the capitol of Alta California, and San Diego.

Los Angeles started out as a small farming town in an area inhabited by friendly Native American Indians. Under the orders of King Carlos III of Spain, a “pueblo” was founded in 1781 to grow food for soldiers guarding this far off territory of Spain as well as to establish a settlement at the Tongva/Gabrielino Indian Village of Yang-na to convert the indigenous people to Catholicism. This “pueblo” was named “Nuestra Senora de la Reina de Los Angeles” meaning, Our Lady Queen of the Angeles, now known as Los Angeles. By the end of the colonial period Los Angeles had nearly 850 residents, though composed mostly of Gabrielinos, Africans, and mestizos.

By 1810, Anglo-Americans had established settlements throughout the middle of the continent and were encroaching on the Spanish colony of Mexico. In 1819, Spain and the United States opened formal negotiations to arrange delineation of their borders in the Americas. As a component of this treaty, known as the Adams-Onís Treaty, the 42<sup>nd</sup> parallel was used as a demarcation line between United States territory to the north, and Spanish territory to the south. The 42<sup>nd</sup> parallel remains the northern boundary of present day California.

#### **4.3.3.2 Mexican Independence (1821 to 1848)**

In 1821, as various Anglo-American insurgents attempted to wrest control of the Texas territory from Spain, a Spanish-Mexican officer, Agustin de Iturbide, led a successful coup over the Spanish-controlled government in New Spain. Mexico, a new independent country, spanned from Alta California to Texas and south to Guatemala. By the mid-1830s, the missions of California had been secularized and systems of land grants, known as the rancho system, were established to promote Hispano-Mexican settlement. Mexican control of Texas and California lasted for only 20 years. In 1845, the United States annexed Texas and acquired California after the successful invasion of Mexico in 1846 to 1848. Through the Treaty of Guadalupe Hidalgo, the United States also acquired all Mexican territory west of the Rio Grande and north of the Gila River, which included Alta California.

Combined, Spain and Mexico controlled California for nearly 70 years, yet the population composition of California was quite mixed at the time of annexation. Californian cities, such as Los Angeles were composed of a mixed, or mestizo, population of Native Americans (Gabrielinos), African slaves, mulattos and Spanish-Mexicans. These populations were commonly referred to as “Californios,” while native Spaniards were rarely seen in the urban areas of Alta California.

#### **4.3.3.3 Early California Period (1848 to 1880)**

In 1850, only two years after California was acquired by the United States, it was admitted as the 31<sup>st</sup> state mainly due to the discovery of gold in 1848 by the American James Marshall. Although gold had been discovered in California by 1842, Marshall’s discovery led to one of the greatest “gold rushes” in American history. Upon discovery of gold, California was transformed from a Hispanic backwoods frontier to the new Anglo-American “Golden State.” The settlement of northern California reflected this new influx of “gold-diggers,” while southern California remained sparsely settled, mostly by rural agriculturalists and herders. Along with the admittance of California to the Union, Los Angeles was incorporated as a city on April 4, 1850 and was also made the county seat of Los Angeles County.

#### **4.3.3.4 Los Angeles Urbanization (1880 to 1950)**

The period of 1880 to 1950, is probably the most formative period in Los Angeles history. It is marked by its growth from a small town to one of the largest cities in the United States. This transition can be attributed to several factors. First, the construction of a transcontinental railroad appears to have been the key for the large population movement to the west coast. The Central Pacific, later renamed the Southern Pacific, first arrived in San Francisco in 1869 and by 1876, a line had been constructed to connect with Los Angeles. The railroad, combined with an expanding orange-growing industry supported tremendous growth in the population of Los Angeles. By 1889 more than 13,000 acres were planted in citrus, which included portions of the project site. By 1900, the population of Los Angeles had jumped to 100,000 from just 2300 in 1860. As Los Angeles and the rest of California moved further away from its Spanish origins, a Hispano-revivalism took place. In fact, the population composition shifted from one dominated by “Californios” to one where Anglo-Americans were the majority. From the 1880s to the beginning of the 20<sup>th</sup> century, new architectural styles arose throughout California, particularly in southern California where so-called “Mission Revival” was becoming quite popular.

By 1900, the population in Los Angeles had grown beyond its capacity of safe drinking water. In 1904, water bureau superintendent William Mulholland devised a plan to create an aqueduct system to carry water from Owens River Valley, located 230 miles northeast of the city. In 1913, construction of the aqueduct was complete and carried nearly 26 million gallons of water per day into the city.

#### **4.3.4 Summary of Archaeological Resources by Alternative**

This section includes information based on the field survey results, archival searches, and other information.

#### 4.3.4.1 Predictive Model Feasibility Study

URS Archaeologist, Mark Neal, M.A., RPA, conducted a study utilizing GIS software to create a predictive model for the APE.

There are two types of archaeological predictive modeling, deductive and inductive. Deductive modeling is based upon theory, previous findings, and ethnographic data. This form of predictive modeling harnesses expert's knowledge concerning the cultural sensitivity of regions that are being investigated.

Inductive modeling is based on observed commonalities between geography and the location of known cultural resources. It is most effective when mass amounts of data regarding geography, known cultural resources, and sophisticated spatial statistics are used to test the significance of the model.

In order to create a plausible dataset, a number of training points is required for the model to have tangible results. At a minimum, a total of 42 points are required as per previous studies (Neal, 2007). The previous study focused on village site locations of the Chumash people in the Santa Ynez Valley. Neal describes this as follows,

*“...a cadastral dataset of land parcels within the project was used. A point data set of the centroids of each parcel attributed with the built date of the building located on each was created. Based on that layer, a surface reflecting the relative densities of historic-era structures was generated using the ArchGIS Point Density tool. The resulting raster was classified by Quantiles into five classes of relative potential for the presence of undisturbed historic era archaeological resources. That raster was converted into a vector-dataset in order to enhance its portability.”*

The map was used to see where historic cultural resources could be located. The five classifications of potential consisted of Low, Moderately Low, Moderate, Moderately High, and High<sup>27</sup> (Figure 4-3).

#### Results

The results of this feasibility study indicate that the current dataset of cultural resources within .25 miles of the archaeological APE for the project consists of four historic archaeological resources and four prehistoric resources. Therefore, there are too few known resources to support the creation of an inductive predictive probabilistic model. However, the possibility of the creation of a deductive, judgmental model is not eliminated by condition.

Due to the urbanized nature of the APE for the Metro Westside extension project, the criteria used for pinpointing site locations did not yield predictable results. The APE is situated on a broad, flat plain; one of the determining factors in predicting site location is the presence of slopes less than 15 degrees, which encompasses virtually the entire APE. In addition, the network of tributaries and streams in the region has been disrupted by the urbanization of Los Angeles, so trying to factor in proximity to water sources is difficult, particularly with limited records available. Many times village sites are

<sup>27</sup> Neal, Mark. 2009. MTA Westside Expansion Predictive Model Feasibility.

associated with ecologically diverse areas rich in food sources, but urbanization of this area has disrupted environmental diversity and identification of ecotones; thus, this aspect of research cannot be used. The fact that the APE is classified as urban environment also hinders data collection, because the original topography has long since been altered.

There are many ways to delineate cultural resources because of the wide range of material possessions and structures that humans leave behind. Additionally, the assumption that cultural resources have remained largely undisturbed for the past fifty years allows for a higher probability of finding intact historic archaeological deposits, although in this situation they would more likely be buried resources rather than intact surface manifestations.

### **Conclusions**

The current effort has succeeded in producing a dataset that can be useful in providing a geographic representation of areas expected to have higher and lower potentials for the presence of historic era archaeological resources. Whereas the strength of the resulting model cannot be statistically quantified nor can it predict prehistoric archaeological sites, it is nonetheless a useful tool. Concepts such as density of historic era structures are generally difficult to assess without maps such as the one provided herein. This modeling effort allows that data to be accessed easily and allows it to be overlaid onto other datasets, thereby enhancing the decision making tools available to planners. In addition, when further hypotheses concerning the locations of significant resources are generated and more environmental datasets are made available, they can be incorporated into this model to enhance its overall accuracy and precision. That ability to constantly build on and improve a model is one of the most powerful aspects of predictive models within the modern urban planning environment.

#### **4.3.4.2 No Build Alternative**

The No Build Alternative does not have the potential to affect archaeological resources, since no excavation will be undertaken as a result of the proposed project, no archaeological resources will be affected, and therefore, none would be directly impacted.

#### **4.3.4.3 Transportation System Management Alternative**

Under the TSM Alternative, no construction would take place. Therefore, no archaeological resources would be affected.



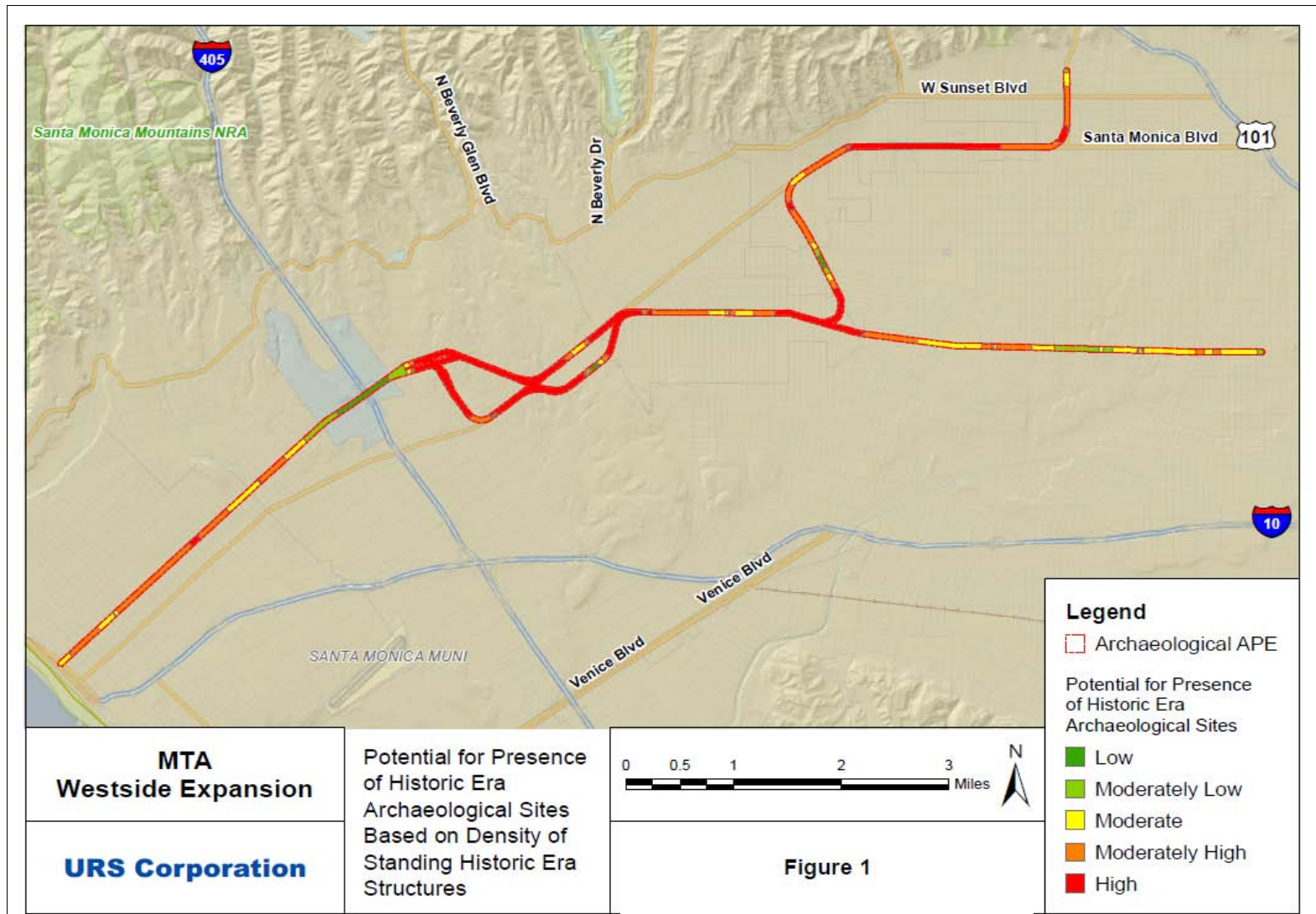


Figure 4-3: Potential for Presence of Historic Era Arch

standing Historic Era Structures

**WESTSIDE SUBWAY EXTENSION**

**4.3.4.4 Alternative 1—Westwood/UCLA Extension**

Previously recorded archaeological resources were identified within the proposed Alternative 1-Westwood/UCLA Extension APE (Table 4-1).

Previously recorded archaeological resources were identified within the 0.25-miles of the proposed Alternative 1—Westwood/UCLA Extension APE (Table 4-2).

Previously conducted archaeological surveys were identified within a 0.25-mile radius of the APE (Table 4-3).

**Table 4-1: Known Historic Properties Previously Documented Within the APE (NRHP Eligible or Listed Along Alignment)**

Primary No.	Trinomial	Site Description	USGS Quadrangle (7.5 Minute)	Recorded
19-003336	None assigned	Historic trash scatter of glass, wood, brick and porcelain underneath Barrington Avenue.	Beverly Hills	2000

**Table 4-2: Known Historic Properties Previously Documented Within 0.25-miles of the APE (NRHP Eligible or Listed Along Alignment)**

Primary No.	Trinomial	Site Description	USGS Quadrangle (7.5 Minute)	Recorded	Site Adjacent to Study Area (Yes/No)?
19-000159	CA-LAN-0159	La Brea Tar Pits	Beverly Hills	1949	Yes
19-000236	CA-LAN-0236	Shell midden	Beverly Hills	1961	No
19-000382	CA-LAN-0382	Unihi Site, a prehistoric village site (CHL-522)	Beverly Hills	1980	No
19-001063	CA-LAN-1063	A prehistoric lithic reduction site	Beverly Hills	1980	No
19-001261	CA-LAN-1261H	An historic filled-in open pit asphalt mine of the Civil War Period.	Hollywood	1986	Yes
19-000236	CA-LAN-0236	Shell midden	Beverly Hills	1961	No
19-003302	CA-LAN-3302	A historic trash pit with domestic trash	Beverly Hills	2003	No

**Table 4-3: Previous Cultural Resource Surveys Conducted Within a ¼-Mile of the Study Area**

Citation	Survey Year	Survey Number	Quadrangle(s) (7.5 Minute)	Survey Within or Adjacent to Study Area (Yes/No)?
Howard, Virginia and Mark Raab. Archaeological Monitoring of the Landmark II Project, Los Angeles, CA. On file at SCCIC.	1987	LAN-0191	Beverly Hills	Yes
CSU Northridge. Report of Archaeological Reconnaissance Survey of: The Proposed West Hollywood Civic Center ESA Project #8178 West Hollywood, CA. On file at SCCIC.	1988	LAN-0236	Beverly Hills	No
Ultra systems. Report Missing. A one acre survey with no sites recorded.	1979	LAN-0563	Beverly Hills	Yes



**Table 4-3: Previous Cultural Resource Surveys Conducted Within a ¼-Mile of the Study Area  
(continued)**

Citation	Survey Year	Survey Number	Quadrangle(s) (7.5 Minute)	Survey Within or Adjacent to Study Area (Yes/No)?
Singer, Clay. Cultural Resource Survey and Impact Assessment for Tentative Tract No. 39621 in the City and County of Los Angeles, CA. On file at SCCIC.	1980	LAN-0676	Beverly Hills	No
Clelow, William. Cultural Resource Assessment of Archaeological Site CA-LAN-382, University High School project. On file at SCCIC.	1976	LAN-0704	Beverly Hills	No
Singer, Clay. Cultural Resource Survey and Impact Assessment for Tentative Tract No. 39619, at the Corner of Goshen and Westgate Avenues, in West Los Angeles, CA. On file at SCCIC.	1980	LAN-0711	Beverly Hills	No
Leach, Melinda. Cultural Resources Survey of Tentative Tract No. 40264 Located at 11531-11539 Rochester Ave., West Los Angeles California. On file at SCCIC.	1980	LAN-0767	Beverly Hills	No
Dillon, Brian. An Archaeological Resource Survey and Impact Assessment of T. Tract #40970, Lots 17 & 15 of Block 56 of the Artesian Tract at 1431-1437 Barry Avenue, Los Angeles, CA. On file at SCCIC.	1981	LAN-0947	Beverly Hills	No
Dillon, Brian. An Archaeological Resource Survey and Impact Assessment of Tentative Tract #28355 in the City of Los Angeles, CA. On file at SCCIC.	1981	LAN-1121	Beverly Hills	Yes
Padon, Beth. An Archaeological Assessment of Lots 1 and 32 on the UCLA Campus, Los Angeles County, CA. On file at SCCIC.	1982	LAN-1139	Beverly Hills	Yes
Padon, Beth. An Archaeological Assessment of a Portion of the Long Range Development Plan 1982-83 of the UCLA Campus, Los Angeles County, CA. On file at SCCIC.	1982	LAN-1161	Beverly Hills	Yes
Brechtman, Robert. An Archaeological Resource Survey and Impact Assessment of "Lot 1, Tract 14500," Los Angeles County, CA. On file at SCCIC.	1982	LAN-1179	Beverly Hills	Yes
Wessel Richard. Letter Report: Survey of Tract 34961, 2.239 acres at 602 Masselin Avenue, Wilshire. On file at SCCIC.	1984	LAN-1330	Hollywood	No
Singer, Clay. Archaeological monitoring at 1234 Granville, W.L.A. On file at SCCIC.	1984	LAN-1371	Hollywood	No
Westec Services, Inc. Technical Report Archaeological Resources Los Angeles rail Rapid transit Project "Metro Rail". On file at SCCIC.	1983	LAN-1578	Hollywood	Yes
Van Horn, David. Archaeological Test Excavations at 1327 Westgate Avenue, Los Angeles, CA. On file at SCCIC.	1989	LAN-1721	Beverly Hills	No
Michael Brandman Associates. Park La Brea EIR No. 88-347-2C (GPA) State Clearinghouse No. 88080307. On file at SCCIC.	1989	LAN-1932	Hollywood	Yes
Bissell, Ronald. Cultural Resources Literature Review of Metro Rail Red Line Western Extension Alternatives, Los Angeles, Los Angeles County, CA. On file at SCCIC.	1989	LAN-1968	Beverly Hills	Yes
Greenwood, Roberta. Technical Report—Archaeology for the Fox Studios Environmental Impact Report. On file at SCCIC.	1990	LAN-2200	Beverly Hills	No
White, Robert. An Archaeological Assessment of the Cedars-Sinai Medical Center Located Adjacent to San Vicente Blvd. In the City of Los Angeles, Los Angeles County. On file at SCCIC.	1991	LAN-2271	Beverly Hills	No
Salls, Roy. The La Brea Cogged Stone. On file at SCCIC.	1978	LAN-2331	Hollywood	No

**Table 4-3: Previous Cultural Resource Surveys Conducted Within a ¼-Mile of the Study Area  
(continued)**

Citation	Survey Year	Survey Number	Quadrangle(s) (7.5 Minute)	Survey Within or Adjacent to Study Area (Yes/No)?
Salls, Roy. The La Brea Atlatl Foreshafts: Inferences for the Millingstone Horizon. On file at SCCIC.	1986	LAN-2360	Hollywood	No
Farnsworth, Laure, et. al. The Shinen'Kan Site: Excavations at the Historic Hancock Ranch House. On file at SCCIC.	1992	LAN-2737	Hollywood	No
Michael Brandman Associates. Park La Brea Supplemental Draft EIR No. 88-347-ZC (GPA) (SUB) (CUB) State Clearinghouse No. 88080307. On file at SCCIC.	1991	LAN-2881	Hollywood	Yes
Greenwood and Associates. Monitoring Report: 1400 Block, 7th Street, Santa Monica. On file at SCCIC.	1996	LAN-3322	Beverly Hills	No
Greenwood and Associates. Monitoring Report Addendum: 1422 Block, 6th Street, Santa Monica. On file at SCCIC.	1996	LAN-3324	Beverly Hills	No
Maki, Mary. A Phase I Cultural Resources Survey of 0.53 acre at 1151, 1155, 1201, and 1212 Detroit Street City of West Hollywood, Los Angeles County, CA. On file at SCCIC.	1995	LAN-3354	Hollywood	Yes
Demcak, Carol. Report of Archaeological Survey for L.S. Cellular Site #775, 4401 Wilshire Boulevard, Los Angeles, Los Angeles County, CA. On file at SCCIC.	1996	LAN-3438	Hollywood	Yes
Gipsman, Jacob. Special Study/Analysis: Epic Discoveries I mad at La Brea. On file at SCCIC.	1973	LAN-3465	Hollywood	Yes
Frost, David. Special Study/Analysis: A Delineation of My Experiences at Rancho La Brea. On file at SCCIC.	1973	LAN-3466	Hollywood	Yes
Gordon, Marlene. Special Study/Analysis: Epic Discoveries I mad at La Brea. On file at SCCIC.	1973	LAN-3467	Hollywood	Yes
Gilden, Eugene. Special Study/Analysis: The Rancho La Brea Project. On file at SCCIC.	1973	LAN-3468	Hollywood	Yes
Turner, Robin and Mark Selverston. Monitoring of Median Improvements, Wilshire Boulevard from Fairfax Avenue to La Brea Avenue. On file at SCCIC.	1996	LAN-3471	Hollywood	Yes
Anonymous. Draft Environmental Impact Report: Metro Rail Transit Corridor Specific Plan, Park Mile Specific Plan Amendments. On file at SCCIC.	1985	LAN-3496	Hollywood	Yes
Dillon, Brian. Archaeological Record Search and Impact Evaluation for the Los Angeles Wastewater Program Management (NOS-NCOS) Project, Los Angeles, CA. On file at SCCIC.	1990	LAN-3501	Hollywood	Yes
Westec Services, Inc. Technical Report: Archaeological Resources Los Angeles Rail Rapid Transit Project "Metro Rail". On file at SCCIC.	1983	LAN-3510	Hollywood	Yes
Buckman, Bonnie. The Los Angeles Basin and Vicinity: A Gazetteer and Compilation of Archaeological Site Information. On file at SCCIC.	1974	LAN-3583	Hollywood	Yes
ENSR. Negative Phase I Archaeological Survey of 1.2 Acre at 1401 Sepulveda Boulevard, Westwood, Los Angeles County, California. On file at SCCIC.	1997	LAN-3599	Beverly Hills	No

**Table 4-3: Previous Cultural Resource Surveys Conducted Within a ¼-Mile of the Study Area  
(continued)**

<b>Citation</b>	<b>Survey Year</b>	<b>Survey Number</b>	<b>Quadrangle(s) (7.5 Minute)</b>	<b>Survey Within or Adjacent to Study Area (Yes/No)?</b>
Strudwick, Ivan and Jay Michalsky. Cultural Resources Monitoring Report for the Crafts Building, Including a Brief History of the Movies in Relation to 20th Century-Fox Studios. City of Los Angeles, Los Angeles County, CA. On file at SCCIC.	1997	LAN-3623	Beverly Hills	No
Anonymous. Request for Determination of Eligibility for Inclusion in the National Register of Historic Places for Beverly Gardens. On file at SCCIC.	N/A	LAN-3678	Beverly Hills	Yes
Anonymous. Request for Determination of Eligibility for Inclusion in the National Register of Historic Places for Beverly Gardens. On file at SCCIC.	N/A	LAN-3679	Beverly Hills	Yes
Anonymous. Request for Determination of Eligibility for Inclusion in the National Register of Historic Places for Beverly Gardens. On file at SCCIC.	N/A	LAN-3680	Beverly Hills	Yes
Romani, Gwendolyn. Results of Phase I Archaeological Survey Located on the North Side of Yucca Street, Between North Las Palmas Avenue and North Cherokee Avenue, Hollywood, Los Angeles County, CA. On file at SCCIC.	1997	LAN-3682	Hollywood	No
City of Los Angeles. Historic Property Survey: Gayley Avenue—Veteran Avenue to Le Conte Avenue. On file at SCCIC.	1977	LAN-3728	Beverly Hills	No
City of Los Angeles. Historic Property Survey: Bundy Drive—North of Wilshire Boulevard to South of La Grange Avenue. On file at SCCIC.	1977	LAN-3729	Beverly Hills	Yes
City of Los Angeles. Historic Property Survey: 6th Street Between Gramercy Place and Bronson Avenue. On file at SCCIC.	1977	LAN-3730	Hollywood	No
City of Los Angeles. Historic Property Survey: Carrillo Drive and Crescent Heights Boulevard—Commodore Slat Drive to First Alley South of Olympic Boulevard. On file at SCCIC.	1977	LAN-3760	Hollywood	No
Webb, Lois, et. al. Historic Property Survey: 07 LA 02 P.M. 3.65/9.57 Route 405 to Fairfax Avenue, Los Angeles County, CA. On file at SCCIC.	1983	LAN-3765	Hollywood	Yes
Mellon and Associates. Historic Preservation of Landscape Resources: Analysis of UCLA's DAR Trees as Historic Resources and Study of Trees and Landscapes as Historic Resources. On file at SCCIC.	1997	LAN-4093	Beverly Hills	No
McKenna, Jeanette and Richard Shepard. Historic Documentation: The University of California, Los Angeles, Academic Health Center Westwood Campus Facility Reconstruction Project, Los Angeles County, CA. On file at SCCIC.	1997	LAN-4095	Beverly Hills	No
Maki, Mary. Phase I Archaeological Survey and Impact Assessment of Approximately 1 acre for the Santa Monica Upward Bound Senior Villa Elderly Housing Project 1011 11th Street Santa Monica, Los Angeles County, CA. On file at SCCIC.	1998	LAN-4142	Beverly Hills	No
Strudwick, Ivan. Completion of Monitoring of Construction Activities at 20th Century-Fox Studios, CA-LAN-2479H, City of Los Angeles, CA. On file at SCCIC.	1998	LAN-4175	Beverly Hills	No
ENVICOM CORPORATION. Historical Property Survey Report West Los Angeles Veloway Project. On file at SCCIC.	1989	LAN-4239	Beverly Hills	Yes

**Table 4-3: Previous Cultural Resource Surveys Conducted Within a ¼-Mile of the Study Area  
(continued)**

<b>Citation</b>	<b>Survey Year</b>	<b>Survey Number</b>	<b>Quadrangle(s) (7.5 Minute)</b>	<b>Survey Within or Adjacent to Study Area (Yes/No)?</b>
Duke, Curt. Cultural Resource Assessment for the AT&T Wireless (AT&T) Services Facility Number 331, Located at 425 South Fairfax Avenue, City and County of Los Angeles, CA. On file at SCCIC.	1999	LAN-4410	Hollywood	No
Duke, Curt. Cultural Resource Assessment for the AT&T Wireless Services Facility Number R225.1, Located at 8300 West Sunset Boulevard, City of West Hollywood, County of Los Angeles, CA. On file at SCCIC.	1999	LAN-4411	Hollywood	No
Rockey, David. The Miracle Mile of Wilshire Boulevard. On file at SCCIC.	1999	LAN-4518	Hollywood	Yes
Duke, Curt. Cultural Resource Assessment for Pacific Bell Mobile Services Facility LA 416-03, in the County of Los Angeles, CA. On file at SCCIC.	1999	LAN-4550	Beverly Hills	No
Duke, Curt. Cultural Resource Assessment for Pacific Bell Mobile Services Facility LA 618-05, in the County of Los Angeles, CA. On file at SCCIC.	1999	LAN-4551	Beverly Hills	Yes
Duke, Curt. Cultural Resource Assessment for Pacific Bell Mobile Services Facility LA 613-02, in the County of Los Angeles, CA. On file at SCCIC.	1999	LAN-4552	Beverly Hills	No
Duke, Curt. Cultural Resource Assessment for Pacific Bell Mobile Services Facility LA 619-06, in the County of Los Angeles, CA. On file at SCCIC.	1999	LAN-4553	Beverly Hills	No
Duke, Curt. Cultural Resource Assessment for Pacific Bell Mobile Services Facility LA 450-02, in the County of Los Angeles, CA. On file at SCCIC.	1999	LAN-4554	Beverly Hills	No
Duke, Curt. Cultural Resource Assessment for Pacific Bell Mobile Services Facility LA 599-02, in the County of Los Angeles, CA. On file at SCCIC.	1999	LAN-4568	Beverly Hills	No
Duke, Curt. Cultural Resource Assessment for Pacific Bell Mobile Services Facility LA 572-09, in the County of Los Angeles, CA. On file at SCCIC.	1999	LAN-4571	Beverly Hills	No
Duke, Curt. Cultural Resource Assessment for Pacific Bell Mobile Services Facility LA 454-01, in the County of Los Angeles, CA. On file at SCCIC.	1999	LAN-4574	Hollywood	Yes
Duke, Curt. Cultural Resource Assessment for Pacific Bell Mobile Services Facility LA 455-02, in the County of Los Angeles, CA. On file at SCCIC.	1999	LAN-4575	Hollywood	No
Duke, Curt. Cultural Resource Assessment for ATT&T Wireless Services Facility Number 633.2, County of Los Angeles, CA. On file at SCCIC.	1999	LAN-4580	Hollywood	No
Atchley, Sara. Cultural resources Investigation for the Nextlink Fiber Optic Project, Los Angeles and Orange Counties, CA. On file at SCCIC.	2000	LAN-4909	Hollywood	No
Lapin, Philippe. Cultural Resource Assessment for ATT&T Wireless Services Facility Number R323, County of Los Angeles, CA. On file at SCCIC.	2000	LAN-5006	Beverly Hills	Yes

**Table 4-3: Previous Cultural Resource Surveys Conducted Within a ¼-Mile of the Study Area  
(continued)**

<b>Citation</b>	<b>Survey Year</b>	<b>Survey Number</b>	<b>Quadrangle(s) (7.5 Minute)</b>	<b>Survey Within or Adjacent to Study Area (Yes/No)?</b>
Gray, Deborah. Cultural Resource Assessment for ATT&T Wireless Services Facility Number C310.2, County of Los Angeles, CA. On file at SCCIC.	1999	LAN-5013	Beverly Hills	No
Iverson, Gary. Negative Archaeological Survey Report: High Occupancy Vehicle Lane in the southbound center median area of Route 405 from Route 10/405 Interchange to Waterford Avenue. On file at SCCIC.	1999	LAN-5016	Beverly Hills	Yes
Duke, Curt. Cultural Resource Assessment for ATT&T Wireless Services Facility Number C632.1, County of Los Angeles, CA. On file at SCCIC.	2000	LAN-5028	Beverly Hills	No
Duke, Curt. Cultural Resource Assessment for ATT&T Wireless Services Facility Number R329.2, County of Los Angeles, CA. On file at SCCIC.	2000	LAN-5032	Beverly Hills	No
Duke, Curt. Cultural Resource Assessment for ATT&T Wireless Services Facility Number R352.1, County of Los Angeles, CA. On file at SCCIC.	2000	LAN-5034	Beverly Hills	Yes
Lapin, Philippe. Cultural Resource Assessment for ATT&T Wireless Services Facility Number R326.1, County of Los Angeles, CA. On file at SCCIC.	2000	LAN-5037	Beverly Hills	No
Lapin, Philippe. Cultural Resource Assessment for ATT&T Wireless Services Facility Number R325, County of Los Angeles, CA. On file at SCCIC.	2000	LAN-5038	Beverly Hills	No
Lapin, Philippe. Cultural Resource Assessment for ATT&T Wireless Services Facility Number R351, County of Los Angeles, CA. On file at SCCIC.	2000	LAN-5039	Beverly Hills	Yes
Sylvia, Barbara. Negative Archaeological Survey Report: Widen Franklin Avenue and Highland Avenue (State Route 170). On file at SCCIC.	2000	LAN-5070	Hollywood	No
Lapin, Philippe. Cultural Resource Assessment for Pacific Bell Wireless Facility LA 650-02, County of Los Angeles, CA. On file at SCCIC.	2000	LAN-5081	Hollywood	No
Duke, Curt. Cultural Resource Assessment for Pacific Bell Mobile Services Facility LA 578-11, County of Los Angeles, CA. On file at SCCIC.	1999	LAN-5082	Hollywood	No
Duke, Curt. Cultural Resource Assessment for Pacific Bell Mobile Services Facility LA 241-01, County of Los Angeles, CA. On file at SCCIC.	1999	LAN-5087	Hollywood	No
Gray, Deborah. Cultural Resource Assessment for Pacific Bell Mobile Services Facility LA 454-02, County of Los Angeles, CA. On file at SCCIC.	1999	LAN-5090	Hollywood	Yes
Holson, John. Archaeological Survey and Record Search for WorldCom 1901 Avenue of the Stars, Century City Loop Project. On file at SCCIC.	2001	LAN-5189	Beverly Hills	Yes
Duke, Curt. Cultural Resource Assessment for Pacific Bell Mobile Services Facility LA 010-02, County of Los Angeles, CA. On file at SCCIC.	2000	LAN-5326	Hollywood	No

**Table 4-3: Previous Cultural Resource Surveys Conducted Within a ¼-Mile of the Study Area  
(continued)**

<b>Citation</b>	<b>Survey Year</b>	<b>Survey Number</b>	<b>Quadrangle(s) (7.5 Minute)</b>	<b>Survey Within or Adjacent to Study Area (Yes/No)?</b>
Sylvia, Barbara. Negative Archaeological Survey Report for the Highland Avenue from Franklin Avenue to Route 101/Cahuenga Boulevard off-ramp project. On file at EIC.	2000	LAN-5329	Hollywood	No
Duke, Curt. Cultural Resource Assessment for the ATT&T Wireless Services Facility Number R137.1, County of Los Angeles, CA. On file at SCCIC.	2000	LAN-5333	Hollywood	Yes
Lapin, Philippe. Cultural Resource Assessment for Pacific Bell Wireless Facility SM 919-01, County of Los Angeles, CA. On file at SCCIC.	2000	LAN-5336	Hollywood	No
Wallock, Nicole. Cultural Resource Assessment for Cingular Wireless Facility No. SM 099-01, Los Angeles County, CA. On file at SCCIC.	2001	LAN-5337	Hollywood	No
Duke, Curt. Cultural Resource Assessment for Cingular Wireless Facility No. SM 035-01, Los Angeles County, CA. On file at SCCIC.	2001	LAN-5339	Hollywood	No
Dooley, Colleen. Cultural Resource Assessment for Cingular Wireless Facility No. SM 096-01, Los Angeles County, CA. On file at SCCIC.	2001	LAN-5343	Hollywood	No
Maki, Mary. Negative Phase I Archaeological Survey of 0.35 Acres for the Havenhurst Drive Senior Housing Project, City of West Hollywood, Los Angeles County, CA. On file at SCCIC.	2001	LAN-5355	Hollywood	No
Wlodarski, Robert. Phase I Archaeological Study for the Nicholas Canyon Beach Access Road Project, FEMA-1203-DR-CA, DSR #94701 [FEMA 01052A], County of Los Angeles, CA. On file at SCCIC.	2002	LAN-5702	Hollywood	No
Maki, Mary. Letter Report: 1517 Franklin Street Housing Project, Santa Monica, CA. On file at SCCIC.	2002	LAN-5732	Beverly Hills	No
Bonner, Wayne. Records Search Results for Sprint PCS Facility LA35XC882A (Sunset & Fairfax Site), located in Los Angeles, Los Angeles County, CA. On file at SCCIC.	1999	LAN-6000	Hollywood	No
Bonner, Wayne. Cultural Resource Monitoring for Cedar-Sinai Central Plant, 8700 Beverly Boulevard, City and County of Los Angeles County, CA. Project No. 95-084. On file at SCCIC.	2002	LAN-6115	Beverly Hills	No
Bonner, Wayne. Cultural Resource Monitoring for Cedar-Sinai S. Mark Taper Foundation Imaging Center, 8700 Beverly Boulevard, City and County of Los Angeles County, CA. Project No. 97-043. On file at SCCIC.	2000	LAN-6116	Beverly Hills	No
Duke, Curt. Cultural Resource Assessment for Cingular Wireless Facility No. SM 179-04, Los Angeles County, CA. On file at SCCIC.	2002	LAN-6122	Beverly Hills	No
Duke, Curt. Cultural Resource Assessment for Cingular Wireless Facility No. SM 235-02, Los Angeles County, CA. On file at SCCIC.	2002	LAN-6124	Beverly Hills	No
Maki, Mary. Letter Report: 2601-2615 Santa Monica Boulevard, Santa Monica, CA. On file at SCCIC.	2002	LAN-6126	Beverly Hills	No
Duke, Curt. Cultural Resource Assessment for Cingular Wireless Facility No. SM 014-01, Los Angeles County, CA. On file at SCCIC.	2001	LAN-6128	Beverly Hills	No
Bonner, Wayne. Cultural Resource Survey Report for an AT&T Wireless Services Telecommunication Facility: Cell Site La Brea/Franklin (R297.2), in the City of Hollywood, Los Angeles County, CA. On file at SCCIC.	2000	LAN-6400	Hollywood	No

**Table 4-3: Previous Cultural Resource Surveys Conducted Within a ¼-Mile of the Study Area  
(continued)**

Citation	Survey Year	Survey Number	Quadrangle(s) (7.5 Minute)	Survey Within or Adjacent to Study Area (Yes/No)?
Duke, Curt and Judith Marvin. Cultural Resource Assessment for AT&T Wireless Services Facility No. C884, Los Angeles County, CA. On file at SCCIC.	2002	LAN-6409	Hollywood	No
McKenna, Jeanette. Cultural Resource Assessment for Cingular Wireless Site LA 239-05, Los Angeles County, CA. On file at SCCIC.	2001	LAN-6411	Hollywood	No
Mason, Roger. Cultural Resource Record Search and Literature Review Report for a Verizon Wireless Telecommunications Facility: Cell Site Franklin (991100291), in the City of Los Angeles, Los Angeles County, CA. On file at SCCIC.	2001	LAN-6412	Hollywood	No
Duke, Curt and Judith Marvin. Cultural Resource Assessment for Cingular Wireless Facility No. SM 099-04, Los Angeles County, CA. On file at SCCIC.	2001	LAN-6416	Hollywood	No
Earthtouch. Nextel Communication Kingsley (CA-7841), 3727 West Sixth Street, Los Angeles, CA. On file at SCCIC.	N/A	LAN-6431	Hollywood	No
Starzak, Richard. NHPA Section 106 review, per FCC direction, of AT&T Wireless Services Wireless Communications Facility, Microcell Site R042.4, located at 6777 Hollywood Boulevard, Los Angeles, CA. On file at SCCIC.	1999	LAN-6434	Hollywood	No
McKenna, Jeanette. Los Angeles New Primary Center No. 1—Archaeological Records Check Summary. On file at SCCIC.	2002	LAN-6441	Hollywood	No
Greenwood, Roberta and Peter Messick. Archaeological Monitor Report: Three Parcels at Park La Brea, Los Angeles, CA. On file at SCCIC.	2002	LAN-6444	Hollywood	No
Mason, Roger. Proposed Verizon Wireless Facility Mid-Wilshire (99900155) in the City and County of Los Angeles, CA. On file at SCCIC.	2001	LAN-6445	Hollywood	Yes
Duke, Curt. Cultural Resource Assessment for Cingular Wireless Facility No. SM 130-01, Los Angeles County, CA. On file at SCCIC.	2002	LAN-6452	Hollywood	No
Duke, Curt and Judith Marvin. Cultural Resource Assessment for Cingular Wireless Facility No. SM 200-02, Los Angeles County, CA. On file at SCCIC.	2002	LAN-6455	Hollywood	No
Duke, Curt and Judith Marvin. Cultural Resource Assessment for Cingular Wireless Facility No. SM 130-02, Los Angeles County, CA. On file at SCCIC.	2002	LAN-6458	Hollywood	No
Duke, Curt. Cultural Resource Assessment for Pacific Bell Mobile Services Facility LA 578-11, County of Los Angeles, CA. On file at SCCIC.	1999	LAN-6462	Hollywood	No
Duke, Curt. Cultural Resource Assessment for Cingular Wireless Facility No. SM 178-03, Los Angeles County, CA. On file at SCCIC.	2003	LAN-6464	Hollywood	No
Duke, Curt. Cultural Resource Assessment for AT&T Wireless Services Facility No. C992.1, County of Los Angeles, CA. On file at SCCIC.	2000	LAN-6478	Beverly Hills	No
Duke, Curt. Cultural Resource Assessment for Pacific Bell Wireless Facility SM 009-01, County of Los Angeles, CA. On file at SCCIC.	2000	LAN-6479	Beverly Hills	No



**Table 4-3: Previous Cultural Resource Surveys Conducted Within a ¼-Mile of the Study Area  
(continued)**

<b>Citation</b>	<b>Survey Year</b>	<b>Survey Number</b>	<b>Quadrangle(s) (7.5 Minute)</b>	<b>Survey Within or Adjacent to Study Area (Yes/No)?</b>
Duke, Curt. Cultural Resource Assessment for Cingular Wireless Facility No. SM 009-04, Los Angeles County, CA. On file at SCCIC.	2001	LAN-6482	Beverly Hills	No
Duke, Curt. Cultural Resource Assessment for Cingular Wireless Facility No. SM 038-01, Los Angeles County, CA. On file at SCCIC.	2001	LAN-6484	Beverly Hills	No
Duke, Curt. Cultural Resource Assessment for Cingular Wireless Facility No. SM 053-01, Los Angeles County, CA. On file at SCCIC.	2001	LAN-6485	Beverly Hills	No
Duke, Curt. Cultural Resource Assessment for Cingular Wireless Facility No. SM 012-02, Los Angeles County, CA. On file at SCCIC.	2001	LAN-6486	Beverly Hills	Yes
Duke, Curt. Cultural Resource Assessment for Cingular Wireless Facility No. SM 094-04, Los Angeles County, CA. On file at SCCIC.	2001	LAN-6489	Beverly Hills	No
Sriro, Adam. Negative Archaeological Survey Report for Addition of a High Occupancy Vehicle (HOV) lane to the northbound Route 405 from 0.5 km south of I-10 to Ventura Boulevard, Los Angeles County, CA. On file at EIC.	2001	LAN-6491	Beverly Hills	Yes
McKenna, Jeanette. Historic Property Survey Report: Highway Project involving the upgrading of a number of intersections within the City of Santa Monica, located between San Vicente Blvd., 9th Street and 30th Street. On file at SCCIC.	2002	LAN-6498	Beverly Hills	Yes
Duke, Curt. Cultural Resource Assessment for Cingular Wireless Facility No. SM 039-01, Los Angeles County, CA. On file at SCCIC.	2001	LAN-6501	Beverly Hills	Yes
Bissell, Ronald. Environmental Assessment for Federal Emergency Management Agency (FEMA) Funding under the Seismic Hazard Mitigation Program for Hospitals (SHMP) of the Santa Monica-UCLA Medical Center Facilities Reconstruction Project, 1250 16th Street, Santa Monica, CA 90404, of the University of California, Los Angeles. On file at SCCIC.	1999	LAN-6503	Beverly Hills	Yes
Duke, Curt. Cultural Resource Assessment for Cingular Wireless Facility No. SM 129-02, Los Angeles County, CA. On file at SCCIC.	2002	LAN-6510	Beverly Hills	No
Duke, Curt. Cultural Resource Assessment for AT&T Wireless Services Facility No. C924.1, County of Los Angeles, CA. On file at SCCIC.	2001	LAN-6513	Beverly Hills	Yes
McKenna, Jeanette. Historic Property Survey Report: Findings Regarding the Properties Located at 1841 Through 1853½ Kelton Avenue in the Westwood area of the City of Los Angeles, Los Angeles County, CA. On file at SCCIC.	2003	LAN-6517	Beverly Hills	No
Bolin, David. Records Search for Site ID Number: R294—Dohney/Wilshire, Geo Trans Project Number L260-000, 911 Wilshire Blvd., Beverly Hills, Los Angeles County, CA. On file at SCCIC.	2001	LAN-6518	Beverly Hills	Yes
Billat, Lorna. Nextel Communication Proposed Wireless Telecommunications Service Facilities—Southern California. On file at SCCIC.	2001	LAN-6520	Beverly Hills	No
Cox, Brian. Nextel Communications CA-6590A / Westholme, 10850 Wilshire Blvd., Los Angeles, CA. On file at SCCIC.	2001	LAN-6525	Beverly Hills	Yes
Duke, Curt. Cultural Resource Assessment for AT&T Wireless Services Facility No. 07013A-01, Los Angeles County, CA. On file at SCCIC.	2002	LAN-6603	Beverly Hills	No

**Table 4-3: Previous Cultural Resource Surveys Conducted Within a ¼-Mile of the Study Area  
(continued)**

Citation	Survey Year	Survey Number	Quadrangle(s) (7.5 Minute)	Survey Within or Adjacent to Study Area (Yes/No)?
Duke, Curt. Cultural Resource Assessment for Cingular Wireless Facility No. SM 179-05, Los Angeles County, CA. On file at SCCIC.	2003	LAN-6713	Beverly Hills	No
Dice, Michael. Records Search Results for Bechtel Communication Facility 6LAD490 (Kodak Theatre), 6801 Hollywood Boulevard, Los Angeles, Los Angeles County, CA. On file at SCCIC.	2002	LAN-6812	Hollywood	No
Dice, Michael. Results of Historic Architecture Assessment and Visual Impact Assessment for Bechtel Communications Facility D485 (Hollywood and Orange), 7036 Hollywood Boulevard, Los Angeles, Los Angeles County, CA. On file at SCCIC.	2002	LAN-6813	Hollywood	No
Harper, Caprice. Cultural Resource Assessment for Cingular Wireless Facility No. SM 123-04, Los Angeles County, CA. On file at SCCIC.	2003	LAN-6883	Beverly Hills	Yes
Harper, Caprice. Cultural Resource Assessment for Cingular Wireless Facility No. SM 250-01, Los Angeles County, CA. On file at SCCIC.	2003	LAN-6884	Beverly Hills	No
Kyle, Carolyn. Cultural Resource Assessment for Cingular Wireless Facility No. SM 226-01, City of Los Angeles, Los Angeles County, CA. On file at SCCIC.	2002	LAN-7088	Beverly Hills	No
Demcak, Carol. Report of Archaeological Survey for Bechtel Project #950023008B, Public Storage, Santa Monica, CA. On file at SCCIC.	2003	LAN-7106	Beverly Hills	No
Allen, Kathleen. Records Search for Bechtel Project (#950023008B), Public Storage, Santa Monica, CA. On file at SCCIC.	2003	LAN-7107	Beverly Hills	No
Michalsky, Jay and Caprice Harper. Cultural Resource Assessment for Cingular Wireless Facility No. LA 396-91, Los Angeles County, CA. On file at SCCIC.	2004	LAN-7122	Beverly Hills	Yes
WSA. Report on Cultural Resources Mitigation and Monitoring Activities; Fluor/ Level (3) Los Angeles Local Loops. On file at SCCIC.	2001	LAN-7178	Hollywood	Yes
Thal, Sean. Request for SHPO Review of FCC Undertaking of Holmby Park / CA-7759A, 880 South Comstock Avenue, Los Angeles, CA. On file at SCCIC.	2005	LAN-7180	Beverly Hills	No
Foster, John. Santa Monica Boulevard Transit Parkway Project, Bone Recovery. On file at SCCIC.	2004	LAN-7246	Beverly Hills	No
Kyle, Carolyn. Cultural Resource Assessment for Cingular Wireless Facility No. SM 179-01, County of Los Angeles, CA. On file at SCCIC.	2002	LAN-7247	Beverly Hills	No
McKenna, Jeanette. A Cultural Resource Investigation and Architectural Evaluation of the Property Located at 1253 18th St., Santa Monica, Los Angeles County, CA. On file at SCCIC.	2005	LAN-7248	Beverly Hills	No
Bonner, Wayne. Records Search Results and Site Visit for Sprint Telecommunications Facility Candidate LA60X429C (Wilshire) 3921 Wilshire Boulevard, Los Angeles, Los Angeles County, CA. On file at SCCIC.	2004	LAN-7339	Hollywood	Yes
Hirsch, Jennifer. Historical Evaluation Report for the Sierra Bonita Air Treatment Facility, Los Angeles, CA. On file at SCCIC.	2005	LAN-7345	Hollywood	No
Kyle, Carolyn. Cultural Resource Assessment for Cingular Wireless Facility No. SM 178-02, City of Los Angeles, Los Angeles County, CA. On file at SCCIC.	2002	LAN-7352	Hollywood	No

**Table 4-3: Previous Cultural Resource Surveys Conducted Within a ¼-Mile of the Study Area  
(continued)**

Citation	Survey Year	Survey Number	Quadrangle(s) (7.5 Minute)	Survey Within or Adjacent to Study Area (Yes/No)?
Kyle, Carolyn. Cultural Resource Assessment for Cingular Wireless Facility No. SM 183-01, City of Los Angeles, Los Angeles County, CA. On file at SCCIC.	2002	LAN-7354	Hollywood	Yes
Gust, Sherri and Mary Hickson. Final Archaeological Mitigation Monitoring Report for the Park La Brea, Parcel B Project, Los Angeles, CA. On file at SCCIC.	2003	LAN-7359	Hollywood	No
Bonner, Wayne. Records Search Results and Site Visit for Sprint Telecommunications Facility Candidate LA60XC429C (Wilshire) 3921 Wilshire Boulevard, Los Angeles, Los Angeles County, CA. On file at SCCIC.	2004	LAN-7397	Hollywood	Yes
Bonner, Wayne. Cultural Records Search Results and Site Visit for T-Mobile Facility Candidate LA03295B (Jamison Properties, Inc.), 4201 Wilshire Boulevard, Los Angeles, Los Angeles County, CA. On file at SCCIC.	2006	LAN-7753	Hollywood	Yes
Bonner, Wayne. Direct and Indirect APE Historic Architectural Assessments for Sprint Telecommunications Facility Candidate LA60XC429C (Wilshire) 3921 Wilshire Boulevard, Los Angeles, Los Angeles County, CA. On file at SCCIC.	2004	LAN-7775	Hollywood	No
Messick, Peter and Roberta Greenwood. Archaeological Monitoring Report University High School Project Los Angeles, CA. On file at SCCIC.	2006	LAN-7953	Beverly Hills	No
Southern California Rapid Transit District. Technical Report: Cultural Resources Los Angeles rail Rapid Transit Project "Metro Rail". On file at SCCIC.	1987	LAN-8020	Hollywood	Yes
Sleepy, Robert. National Historic Preservation Act (NHPA) Section 106 Compliance for the California Department of Veterans Affairs, Proposed Veterans Homes of California—Greater Los Angeles / Ventura Counties. On file at SCCIC.	2005	LAN-8088	Beverly Hills	No
McKenna, Jeanette. Historic American Building Survey: Glendon Manor 1070 Glendon Avenue, Westwood Los Angeles, Los Angeles County, CA. On file at SCCIC.	2001	LAN-8089	Beverly Hills	No
Romani, John. University High School Amphitheater Footing Excavation, at the Gabrieleno/Tongva Springs in West Los Angeles. On file at SCCIC.	2004	LAN-8655	Beverly Hills	No
Chasteen, Carrie and Catherine Wood. Historic Property Survey Report: 7-LA-Sepulveda Boulevard Between Wilshire Boulevard and Mulholland Drive (6 miles) EA 07-4U2944L. On file at SCCIC.	2007	LAN-8710	Beverly Hills	Yes
Baker, Cindy and Mary Maniery. Cultural Resource Inventory and Evaluation of United States Army Reserve 63D Regional Readiness Command Facilities. On file at SCCIC.	2007	LAN-8898	Beverly Hills	Yes
Crawford, Kathleen. Direct APE Historic Architectural Assessment for T-Mobile Facility Candidate LA03295B (Jamison Properties, Inc.), 4201 Wilshire Boulevard, Los Angeles, Los Angeles County, CA. On file at SCCIC.	2006	LAN-9087	Hollywood	Yes

**Table 4-3: Previous Cultural Resource Surveys Conducted Within a ¼-Mile of the Study Area  
(continued)**

Citation	Survey Year	Survey Number	Quadrangle(s) (7.5 Minute)	Survey Within or Adjacent to Study Area (Yes/No)?
Bonner, Wayne. Cultural Resources Records Search and Site Visit Results for T-Mobile Candidate SV11559A (ATC Rooftop) 110 Glendon Avenue, Los Angeles, Los Angeles County, CA. On file at SCCIC.	2007	LAN-9255	Beverly Hills	No

During the Phase 1 pedestrian survey, conducted by URS archaeologists in 2010, one historic period archaeological site was identified. This site consists of all Historic Period Refuse Deposits (HPRD), comprised mostly of historic brick and glass fragments. The site has been a temporary designation of MTA-Temp-1.

#### 4.3.4.5 **Alternative 2—Westwood/VA Hospital Extension**

Since many portions of the Alternatives traverse along the same alignment, there is a duplication of identified resources. This is typically the case in regards to archaeological resources, because 1) a radius APE is utilized (in this case 100 ft along entire alternative and 500 ft around each station option 2) a .25- mile radius study area is used past each 100 ft and 500 ft APE. Therefore, a regional, as well as, study area approach is utilized; thereby resulting in the duplication of resources depending on where the resources were documented along the alignment alternatives.

Previously recorded archaeological resources identified within the proposed Alternative 2- Westwood/VA Hospital Extension APE are the same as those identified for Alternative 1 (Table 4-1).

Previously recorded archaeological resources identified within the 0.25-miles of the proposed Alternative 2 are the same as Alternative 1—Westwood/VA Hospital Extension APE (Table 4-2).

Previously conducted archaeological surveys within a 0.25-mile radius of the APE for Alternative 2 are the same as the archaeological surveys conducted for Alternative 1 (Table 4-3).

#### 4.3.4.6 **Alternative 3—Santa Monica Extension**

Previously recorded archaeological resources identified within the proposed Alternative 3- Santa Monica Extension APE are the same as those identified for Alternative 1 (Table 4-1).

Previously recorded archaeological resources identified within the 0.25-miles of the proposed Alternative 3—Santa Monica Extension APE (Table 4-2).

Previously conducted archaeological surveys within a 0.25-mile radius of the APE for Alternative 3 are the same as the archaeological surveys conducted for Alternative 1 (Table 4-3).

- 4.3.4.7 Alternative 4—Westwood/VA Hospital Extension plus West Hollywood Extension**  
Previously recorded archaeological resources identified within the proposed Alternative 4—Westwood/VA Hospital Extension plus West Hollywood Extension, are the same as those identified for Alternative 1 (Table 4-1). Previously recorded archaeological resources identified within the .25 miles of the proposed Alternative 4, Westwood/VA Hospital Extension plus West Hollywood Extension, are the same as those identified for Alternative 1 (Table 4-2).

**Table 4-4: Previous Cultural Resource Surveys Conducted Within a ¼-Mile of the Study Area**

Citation	Survey Year	Survey Number	Quadrangle(s) (7.5 Minute)	Survey Within or Adjacent to Study Area (Yes/No)?
Howard, Virginia and Mark Raab. Archaeological Monitoring of the Landmark II Project, Los Angeles, CA. On file at SCCIC.	1987	LAN-0191	Beverly Hills	Yes
CSU Northridge. Report of Archaeological Reconnaissance Survey of: The Proposed West Hollywood Civic Center ESA Project #8178 West Hollywood, CA. On file at SCCIC.	1988	LAN-0236	Beverly Hills	No
Ultra systems. A one acre survey with no sites recorded.	1979	LAN-0563	Beverly Hills	Yes
Singer, Clay. Cultural Resource Survey and Impact Assessment for Tentative Tract No. 39621 in the City and County of Los Angeles, CA. On file at SCCIC.	1980	LAN-0676	Beverly Hills	No
Clewlöw, William. Cultural Resource Assessment of Archaeological Site CA-LAN-382, University High School project. On file at SCCIC.	1976	LAN-0704	Beverly Hills	No
Singer, Clay. Cultural Resource Survey and Impact Assessment for Tentative Tract No. 39619, at the Corner of Goshen and Westgate Avenues, in West Los Angeles, CA. On file at SCCIC.	1980	LAN-0711	Beverly Hills	No
Leach, Melinda. Cultural Resources Survey of Tentative Tract No. 40264 Located at 11531-11539 Rochester Ave., West Los Angeles California. On file at SCCIC.	1980	LAN-0767	Beverly Hills	No
Dillon, Brian. An Archaeological Resource Survey and Impact Assessment of T. Tract #40970, Lots 17 & 15 of Block 56 of the Artesian Tract at 1431-1437 Barry Avenue, Los Angeles, CA. On file at SCCIC.	1981	LAN-0947	Beverly Hills	No
Dillon, Brian. An Archaeological Resource Survey and Impact Assessment of Tentative Tract #28355 in the City of Los Angeles, CA. On file at SCCIC.	1981	LAN-1121	Beverly Hills	Yes
Padon, Beth. An Archaeological Assessment of Lots 1 and 32 on the UCLA Campus, Los Angeles County, CA. On file at SCCIC.	1982	LAN-1139	Beverly Hills	Yes
Padon, Beth. An Archaeological Assessment of a Portion of the Long Range Development Plan 1982-83 of the UCLA Campus, Los Angeles County, CA. On file at SCCIC.	1982	LAN-1161	Beverly Hills	Yes
Brechtman, Robert. An Archaeological Resource Survey and Impact Assessment of "Lot 1, Tract 14500," Los Angeles County, CA. On file at SCCIC.	1982	LAN-1179	Beverly Hills	Yes
Wessel Richard. Letter Report: Survey of Tract 34961, 2.239 acres at 602 Masselin Avenue, Wilshire. On file at SCCIC.	1984	LAN-1330	Hollywood	No
Bridgwater, John. Archaeological Reconnaissance Report for Ski Sunrise—Development Plan. On file at SCCIC.	1969	LAN-1350	Hollywood	No

**Table 4-4: Previous Cultural Resource Surveys Conducted Within a ¼-Mile of the Study Area  
(continued)**

Citation	Survey Year	Survey Number	Quadrangle(s) (7.5 Minute)	Survey Within or Adjacent to Study Area (Yes/No)?
Singer, Clay. Archaeological monitoring at 1234 Granville, W.L.A. On file at SCCIC.	1984	LAN-1371	Hollywood	No
Westec Services, Inc. Technical Report Archaeological Resources Los Angeles rail Rapid transit Project "Metro Rail". On file at SCCIC.	1983	LAN-1578	Hollywood	Yes
Van Horn, David. Archaeological Test Excavations at 1327 Westgate Avenue, Los Angeles, CA. On file at SCCIC.	1989	LAN-1721	Beverly Hills	No
Michael Brandman Associates. Park La Brea EIR No. 88-347-2C (GPA) State Clearinghouse No. 88080307. On file at SCCIC.	1989	LAN-1932	Hollywood	Yes
Bissell, Ronald. Cultural Resources Literature Review of Metro Rail Red Line Western Extension Alternatives, Los Angeles, Los Angeles County, CA. On file at SCCIC.	1989	LAN-1968	Beverly Hills	Yes
Greenwood, Roberta. Technical Report—Archaeology for the Fox Studios Environmental Impact Report. On file at SCCIC.	1990	LAN-2200	Beverly Hills	No
White, Robert. An Archaeological Assessment of the Cedars-Sinai Medical Center Located Adjacent to San Vicente Blvd. In the City of Los Angeles, Los Angeles County. On file at SCCIC.	1991	LAN-2271	Beverly Hills	No
Salls, Roy. The La Brea Cogged Stone. On file at SCCIC.	1978	LAN-2331	Hollywood	No
Salls, Roy. The La Brea Atlatl Foreshafts: Inferences for the Millingstone Horizon. On file at SCCIC.	1986	LAN-2360	Hollywood	No
Farnsworth, Laure, et. al. The Shinen'Kan Site: Excavations at the Historic Hancock Ranch House. On file at SCCIC.	1992	LAN-2737	Hollywood	No
Michael Brandman Associates. Park La Brea Supplemental Draft EIR No. 88-347-ZC (GPA) (SUB) (CUB) State Clearinghouse No. 88080307. On file at SCCIC.	1991	LAN-2881	Hollywood	Yes
Foster, John and Roberta Greenwood. Archaeological Investigations at Highland/Hollywood Station (C-301)	1995	LAN-3319	Hollywood	No
Greenwood and Associates. Monitoring Report: 1400 Block, 7 <sup>th</sup> Street, Santa Monica. On file at SCCIC.	1996	LAN-3322	Beverly Hills	No
Greenwood and Associates. Monitoring Report Addendum: 1422 Block, 6 <sup>th</sup> Street, Santa Monica. On file at SCCIC.	1996	LAN-3324	Beverly Hills	No
Maki, Mary. A Phase I Cultural Resources Survey of 0.53 acre at 1151, 1155, 1201, and 1212 Detroit Street City of West Hollywood, Los Angeles County, CA. On file at SCCIC.	1995	LAN-3354	Hollywood	Yes
Demcak, Carol. Report of Archaeological Survey for L.S. Cellular Site #775, 4401 Wilshire Boulevard, Los Angeles, Los Angeles County, CA. On file at SCCIC.	1996	LAN-3438	Hollywood	Yes
Gipsman, Jacob. Special Study/Analysis: Epic Discoveries I mad at La Brea. On file at SCCIC.	1973	LAN-3465	Hollywood	Yes
Frost, David. Special Study/Analysis: A Delineation of My Experiences at Rancho La Brea. On file at SCCIC.	1973	LAN-3466	Hollywood	Yes
Gordon, Marlene. Special Study/Analysis: Epic Discoveries I mad at La Brea. On file at SCCIC.	1973	LAN-3467	Hollywood	Yes

**Table 4-4: Previous Cultural Resource Surveys Conducted Within a ¼-Mile of the Study Area  
(continued)**

<b>Citation</b>	<b>Survey Year</b>	<b>Survey Number</b>	<b>Quadrangle(s) (7.5 Minute)</b>	<b>Survey Within or Adjacent to Study Area (Yes/No)?</b>
Gilden, Eugene. Special Study/Analysis: The Rancho La Brea Project. On file at SCCIC.	1973	LAN-3468	Hollywood	Yes
Turner, Robin and Mark Selverston. Monitoring of Median Improvements, Wilshire Boulevard from Fairfax Avenue to La Brea Avenue. On file at SCCIC.	1996	LAN-3471	Hollywood	Yes
Anonymous. Draft Environmental Impact Report: Metro Rail Transit Corridor Specific Plan, Park Mile Specific Plan Amendments. On file at SCCIC.	1985	LAN-3496	Hollywood	Yes
Dillon, Brian. Archaeological Record Search and Impact Evaluation for the Los Angeles Wastewater Program Management (NOS-NCOS) Project, Los Angeles, CA. On file at SCCIC.	1990	LAN-3501	Hollywood	Yes
Westec Services, Inc. Technical Report: Archaeological Resources Los Angeles Rail Rapid Transit Project "Metro Rail". On file at SCCIC.	1983	LAN-3510	Hollywood	Yes
Buckman, Bonnie. The Los Angeles Basin and Vicinity: A Gazetteer and Compilation of Archaeological Site Information. On file at SCCIC.	1974	LAN-3583	Hollywood	Yes
ENSR. Negative Phase I Archaeological Survey of 1.2 Acre at 1401 Sepulveda Boulevard, Westwood, Los Angeles County, California. On file at SCCIC.	1997	LAN-3599	Beverly Hills	No
Strudwick, Ivan and Jay Michalsky. Cultural Resources Monitoring Report for the Crafts Building, Including a Brief History of the Movies in Relation to 20 <sup>th</sup> Century-Fox Studios. City of Los Angeles, Los Angeles County, CA. On file at SCCIC.	1997	LAN-3623	Beverly Hills	No
Anonymous. Request for Determination of Eligibility for Inclusion in the National Register of Historic Places for Beverly Gardens. On file at SCCIC.	N/A	LAN-3678	Beverly Hills	Yes
Anonymous. Request for Determination of Eligibility for Inclusion in the National Register of Historic Places for Beverly Gardens. On file at SCCIC.	N/A	LAN-3679	Beverly Hills	Yes
Anonymous. Request for Determination of Eligibility for Inclusion in the National Register of Historic Places for Beverly Gardens. On file at SCCIC.	N/A	LAN-3680	Beverly Hills	Yes
Romani, Gwendolyn. Results of Phase I Archaeological Survey Located on the North Side of Yucca Street, Between North Las Palmas Avenue and North Cherokee Avenue, Hollywood, Los Angeles County, CA. On file at SCCIC.	1997	LAN-3682	Hollywood	No
City of Los Angeles. Historic Property Survey: Gayley Avenue—Veteran Avenue to Le Conte Avenue. On file at SCCIC.	1977	LAN-3728	Beverly Hills	No
City of Los Angeles. Historic Property Survey: Bundy Drive—North of Wilshire Boulevard to South of La Grange Avenue. On file at SCCIC.	1977	LAN-3729	Beverly Hills	Yes
City of Los Angeles. Historic Property Survey: 6 <sup>th</sup> Street Between Gramercy Place and Bronson Avenue. On file at SCCIC.	1977	LAN-3730	Hollywood	No



**Table 4-4: Previous Cultural Resource Surveys Conducted Within a ¼-Mile of the Study Area  
(continued)**

<b>Citation</b>	<b>Survey Year</b>	<b>Survey Number</b>	<b>Quadrangle(s) (7.5 Minute)</b>	<b>Survey Within or Adjacent to Study Area (Yes/No)?</b>
City of Los Angeles. Historic Property Survey: Carrillo Drive and Crescent Heights Boulevard—Commodore Slat Drive to First Alley South of Olympic Boulevard. On file at SCCIC.	1977	LAN-3760	Hollywood	No
Webb, Lois, et. al. Historic Property Survey: 07 LA 02 P.M. 3.65/9.57 Route 405 to Fairfax Avenue, Los Angeles County, CA. On file at SCCIC.	1983	LAN-3765	Hollywood	Yes
Mellon and Associates. Historic Preservation of Landscape Resources: Analysis of UCLA's DAR Trees as Historic Resources and Study of Trees and Landscapes as Historic Resources. On file at SCCIC.	1997	LAN-4093	Beverly Hills	No
McKenna, Jeanette and Richard Shepard. Historic Documentation: The University of California, Los Angeles, Academic Health Center Westwood Campus Facility Reconstruction Project, Los Angeles County, CA. On file at SCCIC.	1997	LAN-4095	Beverly Hills	No
Maki, Mary. Phase I Archaeological Survey and Impact Assessment of Approximately 1 acre for the Santa Monica Upward Bound Senior Villa Elderly Housing Project 1011 11 <sup>th</sup> Street Santa Monica, Los Angeles County, CA. On file at SCCIC.	1998	LAN-4142	Beverly Hills	No
Strudwick, Ivan. Completion of Monitoring of Construction Activities at 20 <sup>th</sup> Century-Fox Studios, CA-LAN-2479H, City of Los Angeles, CA. On file at SCCIC.	1998	LAN-4175	Beverly Hills	No
ENVICOM CORPORATION. Historical Property Survey Report West Los Angeles Veloway Project. On file at SCCIC.	1989	LAN-4239	Beverly Hills	Yes
Duke, Curt. Cultural Resource Assessment for the AT&T Wireless (AT&T) Services Facility Number 331, Located at 425 South Fairfax Avenue, City and County of Los Angeles, CA. On file at SCCIC.	1999	LAN-4410	Hollywood	No
Duke, Curt. Cultural Resource Assessment for the AT&T Wireless Services Facility Number R225.1, Located at 8300 West Sunset Boulevard, City of West Hollywood, County of Los Angeles, CA. On file at SCCIC.	1999	LAN-4411	Hollywood	No
Rockey, David. The Miracle Mile of Wilshire Boulevard. On file at SCCIC.	1999	LAN-4518	Hollywood	Yes
Duke, Curt. Cultural Resource Assessment for Pacific Bell Mobile Services Facility LA 416-03, in the County of Los Angeles, CA. On file at SCCIC.	1999	LAN-4550	Beverly Hills	No
Duke, Curt. Cultural Resource Assessment for Pacific Bell Mobile Services Facility LA 618-05, in the County of Los Angeles, CA. On file at SCCIC.	1999	LAN-4551	Beverly Hills	Yes
Duke, Curt. Cultural Resource Assessment for Pacific Bell Mobile Services Facility LA 613-02, in the County of Los Angeles, CA. On file at SCCIC.	1999	LAN-4552	Beverly Hills	No
Duke, Curt. Cultural Resource Assessment for Pacific Bell Mobile Services Facility LA 619-06, in the County of Los Angeles, CA. On file at SCCIC.	1999	LAN-4553	Beverly Hills	No

**Table 4-4: Previous Cultural Resource Surveys Conducted Within a ¼-Mile of the Study Area  
(continued)**

<b>Citation</b>	<b>Survey Year</b>	<b>Survey Number</b>	<b>Quadrangle(s) (7.5 Minute)</b>	<b>Survey Within or Adjacent to Study Area (Yes/No)?</b>
Duke, Curt. Cultural Resource Assessment for Pacific Bell Mobile Services Facility LA 450-02, in the County of Los Angeles, CA. On file at SCCIC.	1999	LAN-4554	Beverly Hills	No
Duke, Curt. Cultural Resource Assessment for Pacific Bell Mobile Services Facility LA 599-02, in the County of Los Angeles, CA. On file at SCCIC.	1999	LAN-4568	Beverly Hills	No
Duke, Curt. Cultural Resource Assessment for Pacific Bell Mobile Services Facility LA 572-09, in the County of Los Angeles, CA. On file at SCCIC.	1999	LAN-4571	Beverly Hills	No
Duke, Curt. Cultural Resource Assessment for Pacific Bell Mobile Services Facility LA 454-01, in the County of Los Angeles, CA. On file at SCCIC.	1999	LAN-4574	Hollywood	Yes
Duke, Curt. Cultural Resource Assessment for Pacific Bell Mobile Services Facility LA 455-02, in the County of Los Angeles, CA. On file at SCCIC.	1999	LAN-4575	Hollywood	No
Duke, Curt. Cultural Resource Assessment for ATT&T Wireless Services Facility Number 633.2, County of Los Angeles, CA. On file at SCCIC.	1999	LAN-4580	Hollywood	No
Atchley, Sara. Cultural resources Investigation for the Nextlink Fiber Optic Project, Los Angeles and Orange Counties, CA. On file at SCCIC.	2000	LAN-4909	Hollywood	No
Lapin, Philippe. Cultural Resource Assessment for ATT&T Wireless Services Facility Number R323, County of Los Angeles, CA. On file at SCCIC.	2000	LAN-5006	Beverly Hills	Yes
Gray, Deborah. Cultural Resource Assessment for ATT&T Wireless Services Facility Number C310.2, County of Los Angeles, CA. On file at SCCIC.	1999	LAN-5013	Beverly Hills	No
Iverson, Gary. Negative Archaeological Survey Report: High Occupancy Vehicle Lane in the southbound center median area of Route 405 from Route 10/405 Interchange to Waterford Avenue. On file at SCCIC.	1999	LAN-5016	Beverly Hills	Yes
Duke, Curt. Cultural Resource Assessment for ATT&T Wireless Services Facility Number C632.1, County of Los Angeles, CA. On file at SCCIC.	2000	LAN-5028	Beverly Hills	No
Duke, Curt. Cultural Resource Assessment for ATT&T Wireless Services Facility Number R329.2, County of Los Angeles, CA. On file at SCCIC.	2000	LAN-5032	Beverly Hills	No
Duke, Curt. Cultural Resource Assessment for ATT&T Wireless Services Facility Number R352.1, County of Los Angeles, CA. On file at SCCIC.	2000	LAN-5034	Beverly Hills	Yes
Lapin, Philippe. Cultural Resource Assessment for ATT&T Wireless Services Facility Number R326.1, County of Los Angeles, CA. On file at SCCIC.	2000	LAN-5037	Beverly Hills	No
Lapin, Philippe. Cultural Resource Assessment for ATT&T Wireless Services Facility Number R325, County of Los Angeles, CA. On file at SCCIC.	2000	LAN-5038	Beverly Hills	No

**Table 4-4: Previous Cultural Resource Surveys Conducted Within a ¼-Mile of the Study Area  
(continued)**

<b>Citation</b>	<b>Survey Year</b>	<b>Survey Number</b>	<b>Quadrangle(s) (7.5 Minute)</b>	<b>Survey Within or Adjacent to Study Area (Yes/No)?</b>
Lapin, Philippe. Cultural Resource Assessment for ATT&T Wireless Services Facility Number R351, County of Los Angeles, CA. On file at SCCIC.	2000	LAN-5039	Beverly Hills	Yes
Sylvia, Barbara. Negative Archaeological Survey Report: Widen Franklin Avenue and Highland Avenue (State Route 170). On file at SCCIC.	2000	LAN-5070	Hollywood	No
Lapin, Philippe. Cultural Resource Assessment for Pacific Bell Wireless Facility LA 650-02, County of Los Angeles, CA. On file at SCCIC.	2000	LAN-5081	Hollywood	No
Duke, Curt. Cultural Resource Assessment for Pacific Bell Mobile Services Facility LA 578-11, County of Los Angeles, CA. On file at SCCIC.	1999	LAN-5082	Hollywood	No
Duke, Curt. Cultural Resource Assessment for Pacific Bell Mobile Services Facility LA 241-01, County of Los Angeles, CA. On file at SCCIC.	1999	LAN-5087	Hollywood	No
Gray, Deborah. Cultural Resource Assessment for Pacific Bell Mobile Services Facility LA 454-02, County of Los Angeles, CA. On file at SCCIC.	1999	LAN-5090	Hollywood	Yes
Holson, John. Archaeological Survey and Record Search for WorldCom 1901 Avenue of the Stars, Century City Loop Project. On file at SCCIC.	2001	LAN-5189	Beverly Hills	Yes
Duke, Curt. Cultural Resource Assessment for Pacific Bell Mobile Services Facility LA 010-02, County of Los Angeles, CA. On file at SCCIC.	2000	LAN-5326	Hollywood	No
Sylvia, Barbara. Negative Archaeological Survey Report for the Highland Avenue from Franklin Avenue to Route 101/Cahuenga Boulevard off-ramp project. On file at EIC.	2000	LAN-5329	Hollywood	No
Duke, Curt. Cultural Resource Assessment for the ATT&T Wireless Services Facility Number R137.1, County of Los Angeles, CA. On file at SCCIC.	2000	LAN-5333	Hollywood	Yes
Lapin, Philippe. Cultural Resource Assessment for Pacific Bell Wireless Facility SM 919-01, County of Los Angeles, CA. On file at SCCIC.	2000	LAN-5336	Hollywood	No
Wallock, Nicole. Cultural Resource Assessment for Cingular Wireless Facility No. SM 099-01, Los Angeles County, CA. On file at SCCIC.	2001	LAN-5337	Hollywood	No
Duke, Curt. Cultural Resource Assessment for Cingular Wireless Facility No. SM 035-01, Los Angeles County, CA. On file at SCCIC.	2001	LAN-5339	Hollywood	No
Dooley, Colleen. Cultural Resource Assessment for Cingular Wireless Facility No. SM 096-01, Los Angeles County, CA. On file at SCCIC.	2001	LAN-5343	Hollywood	No
Maki, Mary. Negative Phase I Archaeological Survey of 0.35 Acres for the Havenhurst Drive Senior Housing Project, City of West Hollywood, Los Angeles County, CA. On file at SCCIC.	2001	LAN-5355	Hollywood	No

**Table 4-4: Previous Cultural Resource Surveys Conducted Within a ¼-Mile of the Study Area  
(continued)**

<b>Citation</b>	<b>Survey Year</b>	<b>Survey Number</b>	<b>Quadrangle(s) (7.5 Minute)</b>	<b>Survey Within or Adjacent to Study Area (Yes/No)?</b>
Wlodarski, Robert. Phase I Archaeological Study for the Nicholas Canyon Beach Access Road Project, FEMA-1203-DR-CA, DSR #94701 [FEMA 01052A], County of Los Angeles, CA. On file at SCCIC.	2002	LAN-5702	Hollywood	No
Maki, Mary. Letter Report: 1517 Franklin Street Housing Project, Santa Monica, CA. On file at SCCIC.	2002	LAN-5732	Beverly Hills	No
Bonner, Wayne. Records Search Results for Sprint PCS Facility LA35XC882A (Sunset & Fairfax Site), located in Los Angeles, Los Angeles County, CA. On file at SCCIC.	1999	LAN-6000	Hollywood	No
Bonner, Wayne. Cultural Resource Monitoring for Cedar-Sinai Central Plant, 8700 Beverly Boulevard, City and County of Los Angeles County, CA. Project No. 95-084. On file at SCCIC.	2002	LAN-6115	Beverly Hills	No
Bonner, Wayne. Cultural Resource Monitoring for Cedar-Sinai S. Mark Taper Foundation Imaging Center, 8700 Beverly Boulevard, City and County of Los Angeles County, CA. Project No. 97-043. On file at SCCIC.	2000	LAN-6116	Beverly Hills	No
Duke, Curt. Cultural Resource Assessment for Cingular Wireless Facility No. SM 179-04, Los Angeles County, CA. On file at SCCIC.	2002	LAN-6122	Beverly Hills	No
Duke, Curt. Cultural Resource Assessment for Cingular Wireless Facility No. SM 235-02, Los Angeles County, CA. On file at SCCIC.	2002	LAN-6124	Beverly Hills	No
Maki, Mary. Letter Report: 2601-2615 Santa Monica Boulevard, Santa Monica, CA. On file at SCCIC.	2002	LAN-6126	Beverly Hills	No
Duke, Curt. Cultural Resource Assessment for Cingular Wireless Facility No. SM 014-01, Los Angeles County, CA. On file at SCCIC.	2001	LAN-6128	Beverly Hills	No
Bonner, Wayne. Cultural Resource Survey Report for an AT&T Wireless Services Telecommunication Facility: Cell Site La Brea/Franklin (R297.2), in the City of Hollywood, Los Angeles County, CA. On file at SCCIC.	2000	LAN-6400	Hollywood	No
Duke, Curt and Judith Marvin. Cultural Resource Assessment for AT&T Wireless Services Facility No. C884, Los Angeles County, CA. On file at SCCIC.	2002	LAN-6409	Hollywood	No
McKenna, Jeanette. Cultural Resource Assessment for Cingular Wireless Site LA 239-05, Los Angeles County, CA. On file at SCCIC.	2001	LAN-6411	Hollywood	No
Mason, Roger. Cultural Resource Record Search and Literature Review Report for a Verizon Wireless Telecommunications Facility: Cell Site Franklin (991100291), in the City of Los Angeles, Los Angeles County, CA. On file at SCCIC.	2001	LAN-6412	Hollywood	No
Duke, Curt and Judith Marvin. Cultural Resource Assessment for Cingular Wireless Facility No. SM 099-04, Los Angeles County, CA. On file at SCCIC.	2001	LAN-6416	Hollywood	No
Earthtouch. Nextel Communication Kingsley (CA-7841), 3727 West Sixth Street, Los Angeles, CA. On file at SCCIC.	N/A	LAN-6431	Hollywood	No

**Table 4-4: Previous Cultural Resource Surveys Conducted Within a ¼-Mile of the Study Area  
(continued)**

<b>Citation</b>	<b>Survey Year</b>	<b>Survey Number</b>	<b>Quadrangle(s) (7.5 Minute)</b>	<b>Survey Within or Adjacent to Study Area (Yes/No)?</b>
Starzak, Richard. NHPA Section 106 review, per FCC direction, of AT&T Wireless Services Wireless Communications Facility, Microcell Site R042.4, located at 6777 Hollywood Boulevard, Los Angeles, CA. On file at SCCIC.	1999	LAN-6434	Hollywood	No
McKenna, Jeanette. Los Angeles New Primary Center No. 1—Archaeological Records Check Summary. On file at SCCIC.	2002	LAN-6441	Hollywood	No
Greenwood, Roberta and Peter Messick. Archaeological Monitor Report: Three Parcels at Park La Brea, Los Angeles, CA. On file at SCCIC.	2002	LAN-6444	Hollywood	No
Mason, Roger. Proposed Verizon Wireless Facility Mid-Wilshire (99900155) in the City and County of Los Angeles, CA. On file at SCCIC.	2001	LAN-6445	Hollywood	Yes
Duke, Curt. Cultural Resource Assessment for Cingular Wireless Facility No. SM 130-01, Los Angeles County, CA. On file at SCCIC.	2002	LAN-6452	Hollywood	No
Duke, Curt and Judith Marvin. Cultural Resource Assessment for Cingular Wireless Facility No. SM 200-02, Los Angeles County, CA. On file at SCCIC.	2002	LAN-6455	Hollywood	No
Duke, Curt and Judith Marvin. Cultural Resource Assessment for Cingular Wireless Facility No. SM 130-02, Los Angeles County, CA. On file at SCCIC.	2002	LAN-6458	Hollywood	No
Duke, Curt. Cultural Resource Assessment for Pacific Bell Mobile Services Facility LA 578-11, County of Los Angeles, CA. On file at SCCIC.	1999	LAN-6462	Hollywood	No
Duke, Curt. Cultural Resource Assessment for Cingular Wireless Facility No. SM 178-03, Los Angeles County, CA. On file at SCCIC.	2003	LAN-6464	Hollywood	No
Duke, Curt. Cultural Resource Assessment for AT&T Wireless Services Facility No. C992.1, County of Los Angeles, CA. On file at SCCIC.	2000	LAN-6478	Beverly Hills	No
Duke, Curt. Cultural Resource Assessment for Pacific Bell Wireless Facility SM 009-01, County of Los Angeles, CA. On file at SCCIC.	2000	LAN-6479	Beverly Hills	No
Duke, Curt. Cultural Resource Assessment for Cingular Wireless Facility No. SM 009-04, Los Angeles County, CA. On file at SCCIC.	2001	LAN-6482	Beverly Hills	No
Duke, Curt. Cultural Resource Assessment for Cingular Wireless Facility No. SM 038-01, Los Angeles County, CA. On file at SCCIC.	2001	LAN-6484	Beverly Hills	No
Duke, Curt. Cultural Resource Assessment for Cingular Wireless Facility No. SM 053-01, Los Angeles County, CA. On file at SCCIC.	2001	LAN-6485	Beverly Hills	No
Duke, Curt. Cultural Resource Assessment for Cingular Wireless Facility No. SM 012-02, Los Angeles County, CA. On file at SCCIC.	2001	LAN-6486	Beverly Hills	Yes

**Table 4-4: Previous Cultural Resource Surveys Conducted Within a ¼-Mile of the Study Area  
(continued)**

<b>Citation</b>	<b>Survey Year</b>	<b>Survey Number</b>	<b>Quadrangle(s) (7.5 Minute)</b>	<b>Survey Within or Adjacent to Study Area (Yes/No)?</b>
Duke, Curt. Cultural Resource Assessment for Cingular Wireless Facility No. SM 094-04, Los Angeles County, CA. On file at SCCIC.	2001	LAN-6489	Beverly Hills	No
Sriro, Adam. Negative Archaeological Survey Report for Addition of a High Occupancy Vehicle (HOV) lane to the northbound Route 405 from 0.5 km south of I-10 to Ventura Boulevard, Los Angeles County, CA. On file at EIC.	2001	LAN-6491	Beverly Hills	Yes
McKenna, Jeanette. Historic Property Survey Report: Highway Project involving the upgrading of a number of intersections within the City of Santa Monica, located between San Vicente Blvd., 9 <sup>th</sup> Street and 30 <sup>th</sup> Street. On file at SCCIC.	2002	LAN-6498	Beverly Hills	Yes
Duke, Curt. Cultural Resource Assessment for Cingular Wireless Facility No. SM 039-01, Los Angeles County, CA. On file at SCCIC.	2001	LAN-6501	Beverly Hills	Yes
Bissell, Ronald. Environmental Assessment for Federal Emergency Management Agency (FEMA) Funding under the Seismic Hazard Mitigation Program for Hospitals (SHMP) of the Santa Monica-UCLA Medical Center Facilities Reconstruction Project, 1250 16 <sup>th</sup> Street, Santa Monica, CA 90404, of the University of California, Los Angeles. On file at SCCIC.	1999	LAN-6503	Beverly Hills	Yes
Duke, Curt. Cultural Resource Assessment for Cingular Wireless Facility No. SM 129-02, Los Angeles County, CA. On file at SCCIC.	2002	LAN-6510	Beverly Hills	No
Duke, Curt. Cultural Resource Assessment for AT&T Wireless Services Facility No. C924.1, County of Los Angeles, CA. On file at SCCIC.	2001	LAN-6513	Beverly Hills	Yes
McKenna, Jeanette. Historic Property Survey Report: Findings Regarding the Properties Located at 1841 Through 1853½ Kelton Avenue in the Westwood area of the City of Los Angeles, Los Angeles County, CA. On file at SCCIC.	2003	LAN-6517	Beverly Hills	No
Bolin, David. Records Search for Site ID Number: R294—Dohney/Wilshire, Geo Trans Project Number L260-000, 911 Wilshire Blvd., Beverly Hills, Los Angeles County, CA. On file at SCCIC.	2001	LAN-6518	Beverly Hills	Yes
Billat, Lorna. Nextel Communication Proposed Wireless Telecommunications Service Facilities—Southern California. On file at SCCIC.	2001	LAN-6520	Beverly Hills	No
Cox, Brian. Nextel Communications CA-6590A / Westholme, 10850 Wilshire Blvd., Los Angeles, CA. On file at SCCIC.	2001	LAN-6525	Beverly Hills	Yes
Duke, Curt. Cultural Resource Assessment for AT&T Wireless Services Facility No. 070I3A-01, Los Angeles County, CA. On file at SCCIC.	2002	LAN-6603	Beverly Hills	No
Duke, Curt. Cultural Resource Assessment for Cingular Wireless Facility No. SM 179-05, Los Angeles County, CA. On file at SCCIC.	2003	LAN-6713	Beverly Hills	No



**Table 4-4: Previous Cultural Resource Surveys Conducted Within a ¼-Mile of the Study Area  
(continued)**

<b>Citation</b>	<b>Survey Year</b>	<b>Survey Number</b>	<b>Quadrangle(s) (7.5 Minute)</b>	<b>Survey Within or Adjacent to Study Area (Yes/No)?</b>
Dice, Michael. Records Search Results for Bechtel Communication Facility 6LAD490 (Kodak Theatre), 6801 Hollywood Boulevard, Los Angeles, Los Angeles County, CA. On file at SCCIC.	2002	LAN-6812	Hollywood	No
Dice, Michael. Results of Historic Architecture Assessment and Visual Impact Assessment for Bechtel Communications Facility D485 (Hollywood and Orange), 7036 Hollywood Boulevard, Los Angeles, Los Angeles County, CA. On file at SCCIC.	2002	LAN-6813	Hollywood	No
Harper, Caprice. Cultural Resource Assessment for Cingular Wireless Facility No. SM 123-04, Los Angeles County, CA. On file at SCCIC.	2003	LAN-6883	Beverly Hills	Yes
Harper, Caprice. Cultural Resource Assessment for Cingular Wireless Facility No. SM 250-01, Los Angeles County, CA. On file at SCCIC.	2003	LAN-6884	Beverly Hills	No
Kyle, Carolyn. Cultural Resource Assessment for Cingular Wireless Facility No. SM 226-01, City of Los Angeles, Los Angeles County, CA. On file at SCCIC.	2002	LAN-7088	Beverly Hills	No
Demcak, Carol. Report of Archaeological Survey for Bechtel Project #950023008B, Public Storage, Santa Monica, CA. On file at SCCIC.	2003	LAN-7106	Beverly Hills	No
Allen, Kathleen. Records Search for Bechtel Project (#950023008B), Public Storage, Santa Monica, CA. On file at SCCIC.	2003	LAN-7107	Beverly Hills	No
Michalsky, Jay and Caprice Harper. Cultural Resource Assessment for Cingular Wireless Facility No. LA 396-91, Los Angeles County, CA. On file at SCCIC.	2004	LAN-7122	Beverly Hills	Yes
WSA. Report on Cultural Resources Mitigation and Monitoring Activities; Fluor/ Level (3) Los Angeles Local Loops. On file at SCCIC.	2001	LAN-7178	Hollywood	Yes
Thal, Sean. Request for SHPO Review of FCC Undertaking of Holmby Park / CA-7759A, 880 South Comstock Avenue, Los Angeles, CA. On file at SCCIC.	2005	LAN-7180	Beverly Hills	No
Foster, John. Santa Monica Boulevard Transit Parkway Project, Bone Recovery. On file at SCCIC.	2004	LAN-7246	Beverly Hills	No
Kyle, Carolyn. Cultural Resource Assessment for Cingular Wireless Facility No. SM 179-01, County of Los Angeles, CA. On file at SCCIC.	2002	LAN-7247	Beverly Hills	No
McKenna, Jeanette. A Cultural Resource Investigation and Architectural Evaluation of the Property Located at 1253 18 <sup>th</sup> St., Santa Monica, Los Angeles County, CA. On file at SCCIC.	2005	LAN-7248	Beverly Hills	No
Bonner, Wayne. Records Search Results and Site Visit for Sprint Telecommunications Facility Candidate LA60X429C (Wilshire) 3921 Wilshire Boulevard, Los Angeles, Los Angeles County, CA. On file at SCCIC.	2004	LAN-7339	Hollywood	Yes

**Table 4-4: Previous Cultural Resource Surveys Conducted Within a ¼-Mile of the Study Area  
(continued)**

Citation	Survey Year	Survey Number	Quadrangle(s) (7.5 Minute)	Survey Within or Adjacent to Study Area (Yes/No)?
Hirsch, Jennifer. Historical Evaluation Report for the Sierra Bonita Air Treatment Facility, Los Angeles, CA. On file at SCCIC.	2005	LAN-7345	Hollywood	No
Kyle, Carolyn. Cultural Resource Assessment for Cingular Wireless Facility No. SM 178-02, City of Los Angeles, Los Angeles County, CA. On file at SCCIC.	2002	LAN-7352	Hollywood	No
Kyle, Carolyn. Cultural Resource Assessment for Cingular Wireless Facility No. SM 183-01, City of Los Angeles, Los Angeles County, CA. On file at SCCIC.	2002	LAN-7354	Hollywood	Yes
Gust, Sherri and Mary Hickson. Final Archaeological Mitigation Monitoring Report for the Park La Brea, Parcel B Project, Los Angeles, CA. On file at SCCIC.	2003	LAN-7359	Hollywood	No
Bonner, Wayne. Records Search Results and Site Visit for Sprint Telecommunications Facility Candidate LA60XC429C (Wilshire) 3921 Wilshire Boulevard, Los Angeles, Los Angeles County, CA. On file at SCCIC.	2004	LAN-7397	Hollywood	Yes
Bonner, Wayne. Cultural Records Search Results and Site Visit for T-Mobile Facility Candidate LA03295B (Jamison Properties, Inc.), 4201 Wilshire Boulevard, Los Angeles, Los Angeles County, CA. On file at SCCIC.	2006	LAN-7753	Hollywood	Yes
Duke, Curt and Judith Marvin. Cultural Resource Assessment for Cingular Wireless Facility No. SM 182-02, West Hollywood, Los Angeles County, CA. On file at SCCIC.	2003	LAN-7772	Hollywood	Yes
Bonner, Wayne. Direct and Indirect APE Historic Architectural Assessments for Sprint Telecommunications Facility Candidate LA60XC429C (Wilshire) 3921 Wilshire Boulevard, Los Angeles, Los Angeles County, CA. On file at SCCIC.	2004	LAN-7775	Hollywood	No
Messick, Peter and Roberta Greenwood. Archaeological Monitoring Report University High School Project Los Angeles, CA. On file at SCCIC.	2006	LAN-7953	Beverly Hills	No
Slawson, Dana. Cultural Resources Technical Report: Land Use History and Archaeological Evaluation Metro Rail Redline, Segment 3 Hollywood/Highland Station. On file at SCCIC.	1994	LAN-8016	Hollywood	Yes
Southern California Rapid Transit District. Technical Report: Cultural Resources Los Angeles rail Rapid Transit Project "Metro Rail". On file at SCCIC.	1987	LAN-8020	Hollywood	Yes
Sleepy, Robert. National Historic Preservation Act (NHPA) Section 106 Compliance for the California Department of Veterans Affairs, Proposed Veterans Homes of California—Greater Los Angeles / Ventura Counties. On file at SCCIC.	2005	LAN-8088	Beverly Hills	No
McKenna, Jeanette. Historic American Building Survey: Glendon Manor 1070 Glendon Avenue, Westwood Los Angeles, Los Angeles County, CA. On file at SCCIC.	2001	LAN-8089	Beverly Hills	No

**Table 4-4: Previous Cultural Resource Surveys Conducted Within a ¼-Mile of the Study Area  
(continued)**

<b>Citation</b>	<b>Survey Year</b>	<b>Survey Number</b>	<b>Quadrangle(s) (7.5 Minute)</b>	<b>Survey Within or Adjacent to Study Area (Yes/No)?</b>
McKenna, Jeanette. A Phase I Cultural and Paleontological Resources Investigations for the Proposed Sunset Millennium Project Area in West Hollywood, Los Angeles County, CA. On file at SCCIC.	1999	LAN-8244	Hollywood	No
Gust, Sherri and Heather Puckett. Los Angeles Metro Red Line Project, Segments 2 and 3 Archaeological resources Impact Mitigation Program Final Report of Findings. On file at SCCIC.	2004	LAN-8251	Hollywood	Yes
Maki, Mary. Negative Archaeological Survey Report of Approximately 0.3-Acre for the Sierra Bonita Construction Project, 7530 Santa Monica Boulevard West Hollywood, Los Angeles County, CA. On file at SCCIC.	2007	LAN-8269	Hollywood	Yes
Toledo, Cessna and Beck McAvoy. Historic Property Survey Report: California Incline Bridge Replacement Project, Ocean Avenue to SR-1 within the City of Santa Monica. On file at SCCIC.	2006	LAN-8294	Topanga	No
Robinson, Mark. Archaeological Survey Report Finding of No Archaeological Resources Present for the California Incline Bridge Replacement Project City of Santa Monica, CA. On file at SCCIC.	2006	LAN-8295	Topanga	No
Romani, John. University High School Amphitheater Footing Excavation, at the Gabrieleno/Tongva Springs in West Los Angeles. On file at SCCIC.	2004	LAN-8655	Beverly Hills	No
Chasteen, Carrie and Catherine Wood. Historic Property Survey Report: 7-LA-Sepulveda Boulevard Between Wilshire Boulevard and Mulholland Drive (6 miles) EA 07-4U2944L. On file at SCCIC.	2007	LAN-8710	Beverly Hills	Yes
Baker, Cindy and Mary Manieri. Cultural Resource Inventory and Evaluation of United States Army Reserve 63D Regional Readiness Command Facilities. On file at SCCIC.	2007	LAN-8898	Beverly Hills	Yes
Crawford, Kathleen. Direct APE Historic Architectural Assessment for T-Mobile Facility Candidate LA03295B (Jamison Properties, Inc.), 4201 Wilshire Boulevard, Los Angeles, Los Angeles County, CA. On file at SCCIC.	2006	LAN-9087	Hollywood	Yes
Bonner, Wayne. Cultural Resources Records Search and Site Visit Results for T-Mobile Candidate SV11559A (ATC Rooftop) 110 Glendon Avenue, Los Angeles, Los Angeles County, CA. On file at SCCIC.	2007	LAN-9255	Beverly Hills	No
Ehringer, Candace et. al. Cultural Resources Assessment for the Proposed Formosa Specific Plan at Santa Monica Boulevard, West Hollywood, Los Angeles County, CA. On file at SCCIC.	2007	LAN-9304	Hollywood	Yes

**4.3.4.8 Alternative 5—Santa Monica Extension plus West Hollywood Extension**

Previously recorded archaeological resources identified within the .25 miles of the proposed Alternative 5—Santa Monica Extension plus West Hollywood Extension.

**Table 4-5: Previous Cultural Resource Surveys Conducted Within a ¼-Mile of the Study Area**

Citation	Survey Year	Survey Number	Quadrangle(s) (7.5 Minute)	Survey Within or Adjacent to Study Area (Yes/No)?
Foster, John and Roberta Greenwood. Archaeological Investigations at Highland/Hollywood Station (C-301)	1995	LAN-3319	Hollywood	No
Ehringer, Candace et. al. Cultural Resources Assessment for the Proposed Formosa Specific Plan at Santa Monica Boulevard, West Hollywood, Los Angeles County, CA. On file at SCCIC.	2007	LAN-9304	Hollywood	Yes
McKenna, Jeanette. A Phase I Cultural and Paleontological Resources Investigations for the Proposed Sunset Millennium Project Area in West Hollywood, Los Angeles County, CA. On file at SCCIC.	1999	LAN-8244	Hollywood	No
Gust, Sherri and Heather Puckett. Los Angeles Metro Red Line Project, Segments 2 and 3 Archaeological resources Impact Mitigation Program Final Report of Findings. On file at SCCIC.	2004	LAN-8251	Hollywood	Yes
Maki, Mary. Negative Archaeological Survey Report of Approximately 0.3-Acre for the Sierra Bonita Construction Project, 7530 Santa Monica Boulevard West Hollywood, Los Angeles County, CA. On file at SCCIC.	2007	LAN-8269	Hollywood	Yes
Slawson, Dana. Cultural Resources Technical Report: Land Use History and Archaeological Evaluation Metro Rail Redline, Segment 3 Hollywood/Highland Station. On file at SCCIC.	1994	LAN-8016	Hollywood	Yes
Duke, Curt and Judith Marvin. Cultural Resource Assessment for Cingular Wireless Facility No. SM 182-02, West Hollywood, Los Angeles County, CA. On file at SCCIC.	2003	LAN-7772	Hollywood	Yes

**4.3.4.9 MOS 1 -Fairfax Station Terminus**

There is one previously recorded archaeological resources identified within the APE for MOS 1 (Table 4-6).

**Table 4-6: MOS 1-Fairfax Station Terminus APE Known Historic Properties Previously Documented Within the APE**

Primary No.	Trinomial	Site Description	USGS Quadrangle (7.5 Minute)	Recorded
LAN-1261H		An historic filled in open pit asphalt mine of the Civil War Period.	Hollywood	1986

No additional archaeological resources have been previously recorded within a .25 mile range of the proposed MOS 1-Fairfax Station Terminus APE.

Below are the previously conducted archaeological surveys within a 0.25-mile radius of the APE for MOS 1-Fairfax Station Terminus APE.

**Table 4-7: Previous Cultural Resource Surveys Conducted Within a ¼-Mile of the APE for MOS 1-Fairfax Station Terminus**

Citation	Survey Year	Survey Number	Quadrangle(s) (7.5 Minute)	Survey Within or Adjacent to Project Area (Yes/No)?
Wessel Richard. Letter Report: Survey of Tract 34961, 2.239 acres at 602 Masselin Avenue, Wilshire. On file at SCCIC.	1984	LAN-1330	Hollywood	No
Bridgwater, John. Archaeological Reconnaissance Report for Ski Sunrise—Development Plan. On file at SCCIC.	1969	LAN-1350	Hollywood	No
Singer, Clay. Archaeological monitoring at 1234 Granville, W.L.A. On file at SCCIC.	1984	LAN-1371	Hollywood	No
Michael Brandman Associates. Park La Brea Supplemental Draft EIR No. 88-347-ZC (GPA) (SUB) (CUB) State Clearinghouse No. 88080307. On file at SCCIC.	1991	LAN-2881	Hollywood	Yes
Foster, John and Roberta Greenwood. Archaeological Investigations at Highland/Hollywood Station (C-301)	1995	LAN-3319	Hollywood	No
Maki, Mary. A Phase I Cultural Resources Survey of 0.53 acre at 1151, 1155, 1201, and 1212 Detroit Street City of West Hollywood, Los Angeles County, CA. On file at SCCIC.	1995	LAN-3354	Hollywood	Yes
Demcak, Carol. Report of Archaeological Survey for L.S. Cellular Site #775, 4401 Wilshire Boulevard, Los Angeles, Los Angeles County, CA. On file at SCCIC.	1996	LAN-3438	Hollywood	Yes
Gipsman, Jacob. Special Study/Analysis: Epic Discoveries I mad at La Brea. On file at SCCIC.	1973	LAN-3465	Hollywood	Yes
Frost, David. Special Study/Analysis: A Delineation of My Experiences at Rancho La Brea. On file at SCCIC.	1973	LAN-3466	Hollywood	Yes
Gordon, Marlene. Special Study/Analysis: Epic Discoveries I mad at La Brea. On file at SCCIC.	1973	LAN-3467	Hollywood	Yes

**Table 4-7: Previous Cultural Resource Surveys Conducted Within a ¼-Mile of the APE for MOS 1-Fairfax Station Terminus (continued)**

Citation	Survey Year	Survey Number	Quadrangle(s) (7.5 Minute)	Survey Within or Adjacent to Project Area (Yes/No)?
Gilden, Eugene. Special Study/Analysis: The Rancho La Brea Project. On file at SCCIC.	1973	LAN-3468	Hollywood	Yes
Turner, Robin and Mark Selverston. Monitoring of Median Improvements, Wilshire Boulevard from Fairfax Avenue to La Brea Avenue. On file at SCCIC.	1996	LAN-3471	Hollywood	Yes
Anonymous. Draft Environmental Impact Report: Metro Rail Transit Corridor Specific Plan, Park Mile Specific Plan Amendments. On file at SCCIC.	1985	LAN-3496	Hollywood	Yes
Dillon, Brian. Archaeological Record Search and Impact Evaluation for the Los Angeles Wastewater Program Management (NOS-NCOS) Project, Los Angeles, CA. On file at SCCIC.	1990	LAN-3501	Hollywood	Yes
Westec Services, Inc. Technical Report: Archaeological Resources Los Angeles Rail Rapid Transit Project "Metro Rail". On file at SCCIC.	1983	LAN-3510	Hollywood	Yes
Buckman, Bonnie. The Los Angeles Basin and Vicinity: A Gazetteer and Compilation of Archaeological Site Information. On file at SCCIC.	1974	LAN-3583	Hollywood	Yes
Romani, Gwendolyn. Results of Phase I Archaeological Survey Located on the North Side of Yucca Street, Between North Las Palmas Avenue and North Cherokee Avenue, Hollywood, Los Angeles County, CA. On file at SCCIC.	1997	LAN-3682	Hollywood	No
City of Los Angeles. Historic Property Survey: 6th Street Between Gramercy Place and Bronson Avenue. On file at SCCIC.	1977	LAN-3730	Hollywood	No
City of Los Angeles. Historic Property Survey: Carrillo Drive and Crescent Heights Boulevard—Commodore Slat Drive to First Alley South of Olympic Boulevard. On file at SCCIC.	1977	LAN-3760	Hollywood	No
Webb, Lois, et. al. Historic Property Survey: 07 LA 02 P.M. 3.65/9.57 Route 405 to Fairfax Avenue, Los Angeles County, CA. On file at SCCIC.	1983	LAN-3765	Hollywood	Yes
Duke, Curt. Cultural Resource Assessment for the AT&T Wireless (AT&T) Services Facility Number 331, Located at 425 South Fairfax Avenue, City and County of Los Angeles, CA. On file at SCCIC.	1999	LAN-4410	Hollywood	No
Duke, Curt. Cultural Resource Assessment for the AT&T Wireless Services Facility Number R225.1, Located at 8300 West Sunset Boulevard, City of West Hollywood, County of Los Angeles, CA. On file at SCCIC.	1999	LAN-4411	Hollywood	No
Rockey, David. The Miracle Mile of Wilshire Boulevard. On file at SCCIC.	1999	LAN-4518	Hollywood	Yes
Duke, Curt. Cultural Resource Assessment for Pacific Bell Mobile Services Facility LA 454-01, in the County of Los Angeles, CA. On file at SCCIC.	1999	LAN-4574	Hollywood	Yes



**Table 4-7: Previous Cultural Resource Surveys Conducted Within a ¼-Mile of the APE for MOS 1-Fairfax Station Terminus (continued)**

Citation	Survey Year	Survey Number	Quadrangle(s) (7.5 Minute)	Survey Within or Adjacent to Project Area (Yes/No)?
Duke, Curt. Cultural Resource Assessment for Pacific Bell Mobile Services Facility LA 455-02, in the County of Los Angeles, CA. On file at SCCIC.	1999	LAN-4575	Hollywood	No
Duke, Curt. Cultural Resource Assessment for ATT&T Wireless Services Facility Number 633.2, County of Los Angeles, CA. On file at SCCIC.	1999	LAN-4580	Hollywood	No
Atchley, Sara. Cultural resources Investigation for the Nextlink Fiber Optic Project, Los Angeles and Orange Counties, CA. On file at SCCIC.	2000	LAN-4909	Hollywood	No
Duke, Curt. Cultural Resource Assessment for Pacific Bell Mobile Services Facility LA 010-02, County of Los Angeles, CA. On file at SCCIC.	2000	LAN-5326	Hollywood	No
Sylvia, Barbara. Negative Archaeological Survey Report for the Highland Avenue from Franklin Avenue to Route 101/Cahuenga Boulevard off-ramp project. On file at EIC.	2000	LAN-5329	Hollywood	No
Duke, Curt. Cultural Resource Assessment for the ATT&T Wireless Services Facility Number R137.1, County of Los Angeles, CA. On file at SCCIC.	2000	LAN-5333	Hollywood	Yes
Lapin, Philippe. Cultural Resource Assessment for Pacific Bell Wireless Facility SM 919-01, County of Los Angeles, CA. On file at SCCIC.	2000	LAN-5336	Hollywood	No
Wallock, Nicole. Cultural Resource Assessment for Cingular Wireless Facility No. SM 099-01, Los Angeles County, CA. On file at SCCIC.	2001	LAN-5337	Hollywood	No
Duke, Curt. Cultural Resource Assessment for Cingular Wireless Facility No. SM 035-01, Los Angeles County, CA. On file at SCCIC.	2001	LAN-5339	Hollywood	No
Dooley, Colleen. Cultural Resource Assessment for Cingular Wireless Facility No. SM 096-01, Los Angeles County, CA. On file at SCCIC.	2001	LAN-5343	Hollywood	No
Maki, Mary. Negative Phase I Archaeological Survey of 0.35 Acres for the Havenhurst Drive Senior Housing Project, City of West Hollywood, Los Angeles County, CA. On file at SCCIC.	2001	LAN-5355	Hollywood	No
Wlodarski, Robert. Phase I Archaeological Study for the Nicholas Canyon Beach Access Road Project, FEMA-1203-DR-CA, DSR #94701 [FEMA 01052A], County of Los Angeles, CA. On file at SCCIC.	2002	LAN-5702	Hollywood	No
Bonner, Wayne. Records Search Results for Sprint PCS Facility LA35XC882A (Sunset & Fairfax Site), located in Los Angeles, Los Angeles County, CA. On file at SCCIC.	1999	LAN-6000	Hollywood	No
Bonner, Wayne. Cultural Resource Survey Report for an AT&T Wireless Services Telecommunication Facility: Cell Site La Brea/Franklin (R297.2), in the City of Hollywood, Los Angeles County, CA. On file at SCCIC.	2000	LAN-6400	Hollywood	No

**Table 4-7: Previous Cultural Resource Surveys Conducted Within a ¼-Mile of the APE for MOS 1-Fairfax Station Terminus (continued)**

Citation	Survey Year	Survey Number	Quadrangle(s) (7.5 Minute)	Survey Within or Adjacent to Project Area (Yes/No)?
Duke, Curt and Judith Marvin. Cultural Resource Assessment for AT&T Wireless Services Facility No. C884, Los Angeles County, CA. On file at SCCIC.	2002	LAN-6409	Hollywood	No
McKenna, Jeanette. Cultural Resource Assessment for Cingular Wireless Site LA 239-05, Los Angeles County, CA. On file at SCCIC.	2001	LAN-6411	Hollywood	No
Mason, Roger. Cultural Resource Record Search and Literature Review Report for a Verizon Wireless Telecommunications Facility: Cell Site Franklin (991100291), in the City of Los Angeles, Los Angeles County, CA. On file at SCCIC.	2001	LAN-6412	Hollywood	No
Duke, Curt and Judith Marvin. Cultural Resource Assessment for Cingular Wireless Facility No. SM 099-04, Los Angeles County, CA. On file at SCCIC.	2001	LAN-6416	Hollywood	No
Earthtouch. Nextel Communication Kingsley (CA-7841), 3727 West Sixth Street, Los Angeles, CA. On file at SCCIC.	N/A	LAN-6431	Hollywood	No
Starzak, Richard. NHPA Section 106 review, per FCC direction, of AT&T Wireless Services Wireless Communications Facility, Microcell Site R042.4, located at 6777 Hollywood Boulevard, Los Angeles, CA. On file at SCCIC.	1999	LAN-6434	Hollywood	No
McKenna, Jeanette. Los Angeles New Primary Center No. 1—Archaeological Records Check Summary. On file at SCCIC.	2002	LAN-6441	Hollywood	No
Greenwood, Roberta and Peter Messick. Archaeological Monitor Report: Three Parcels at Park La Brea, Los Angeles, CA. On file at SCCIC.	2002	LAN-6444	Hollywood	No
Mason, Roger. Proposed Verizon Wireless Facility Mid-Wilshire (99900155) in the City and County of Los Angeles, CA. On file at SCCIC.	2001	LAN-6445	Hollywood	Yes
Duke, Curt. Cultural Resource Assessment for Cingular Wireless Facility No. SM 130-01, Los Angeles County, CA. On file at SCCIC.	2002	LAN-6452	Hollywood	No
Duke, Curt and Judith Marvin. Cultural Resource Assessment for Cingular Wireless Facility No. SM 200-02, Los Angeles County, CA. On file at SCCIC.	2002	LAN-6455	Hollywood	No
Duke, Curt and Judith Marvin. Cultural Resource Assessment for Cingular Wireless Facility No. SM 130-02, Los Angeles County, CA. On file at SCCIC.	2002	LAN-6458	Hollywood	No
Duke, Curt. Cultural Resource Assessment for Pacific Bell Mobile Services Facility LA 578-11, County of Los Angeles, CA. On file at SCCIC.	1999	LAN-6462	Hollywood	No
Duke, Curt. Cultural Resource Assessment for Cingular Wireless Facility No. SM 178-03, Los Angeles County, CA. On file at SCCIC.	2003	LAN-6464	Hollywood	No

**Table 4-7: Previous Cultural Resource Surveys Conducted Within a ¼-Mile of the APE for MOS 1-Fairfax Station Terminus (continued)**

Citation	Survey Year	Survey Number	Quadrangle(s) (7.5 Minute)	Survey Within or Adjacent to Project Area (Yes/No)?
Dice, Michael. Records Search Results for Bechtel Communication Facility 6LAD490 (Kodak Theatre), 6801 Hollywood Boulevard, Los Angeles, Los Angeles County, CA. On file at SCCIC.	2002	LAN-6812	Hollywood	No
Dice, Michael. Results of Historic Architecture Assessment and Visual Impact Assessment for Bechtel Communications Facility D485 (Hollywood and Orange), 7036 Hollywood Boulevard, Los Angeles, Los Angeles County, CA. On file at SCCIC.	2002	LAN-6813	Hollywood	No
Hirsch, Jennifer. Historical Evaluation Report for the Sierra Bonita Air Treatment Facility, Los Angeles, CA. On file at SCCIC.	2005	LAN-7345	Hollywood	No
Kyle, Carolyn. Cultural Resource Assessment for Cingular Wireless Facility No. SM 178-02, City of Los Angeles, Los Angeles County, CA. On file at SCCIC.	2002	LAN-7352	Hollywood	No
Kyle, Carolyn. Cultural Resource Assessment for Cingular Wireless Facility No. SM 183-01, City of Los Angeles, Los Angeles County, CA. On file at SCCIC.	2002	LAN-7354	Hollywood	Yes
Gust, Sherri and Mary Hickson. Final Archaeological Mitigation Monitoring Report for the Park La Brea, Parcel B Project, Los Angeles, CA. On file at SCCIC.	2003	LAN-7359	Hollywood	No
Bonner, Wayne. Records Search Results and Site Visit for Sprint Telecommunications Facility Candidate LA60XC429C (Wilshire) 3921 Wilshire Boulevard, Los Angeles, Los Angeles County, CA. On file at SCCIC.	2004	LAN-7397	Hollywood	Yes
Bonner, Wayne. Cultural Records Search Results and Site Visit for T-Mobile Facility Candidate LA03295B (Jamison Properties, Inc.), 4201 Wilshire Boulevard, Los Angeles, Los Angeles County, CA. On file at SCCIC.	2006	LAN-7753	Hollywood	Yes
Duke, Curt and Judith Marvin. Cultural Resource Assessment for Cingular Wireless Facility No. SM 182-02, West Hollywood, Los Angeles County, CA. On file at SCCIC.	2003	LAN-7772	Hollywood	Yes
Bonner, Wayne. Direct and Indirect APE Historic Architectural Assessments for Sprint Telecommunications Facility Candidate LA60XC429C (Wilshire) 3921 Wilshire Boulevard, Los Angeles, Los Angeles County, CA. On file at SCCIC.	2004	LAN-7775	Hollywood	No
Duke, Curt and Judith Marvin. Cultural Resource Assessment for Cingular Wireless Facility No. SM 182-02, West Hollywood, Los Angeles County, CA. On file at SCCIC.	2003	LAN-7772	Hollywood	Yes
Bonner, Wayne. Direct and Indirect APE Historic Architectural Assessments for Sprint Telecommunications Facility Candidate LA60XC429C (Wilshire) 3921 Wilshire Boulevard, Los Angeles, Los Angeles County, CA. On file at SCCIC.	2004	LAN-7775	Hollywood	No

**Table 4-7: Previous Cultural Resource Surveys Conducted Within a ¼-Mile of the APE for MOS 1-Fairfax Station Terminus (continued)**

Citation	Survey Year	Survey Number	Quadrangle(s) (7.5 Minute)	Survey Within or Adjacent to Project Area (Yes/No)?
Slawson, Dana. Cultural Resources Technical Report: Land Use History and Archaeological Evaluation Metro Rail Redline, Segment 3 Hollywood/Highland Station. On file at SCCIC.	1994	LAN-8016	Hollywood	Yes
Southern California Rapid Transit District. Technical Report: Cultural Resources Los Angeles rail Rapid Transit Project "Metro Rail". On file at SCCIC.	1987	LAN-8020	Hollywood	Yes
McKenna, Jeanette. A Phase I Cultural and Paleontological Resources Investigations for the Proposed Sunset Millennium Project Area in West Hollywood, Los Angeles County, CA. On file at SCCIC.	1999	LAN-8244	Hollywood	No
Gust, Sherri and Heather Puckett. Los Angeles Metro Red Line Project, Segments 2 and 3 Archaeological resources Impact Mitigation Program Final Report of Findings. On file at SCCIC.	2004	LAN-8251	Hollywood	Yes
Maki, Mary. Negative Archaeological Survey Report of Approximately 0.3-Acre for the Sierra Bonita Construction Project, 7530 Santa Monica Boulevard West Hollywood, Los Angeles County, CA. On file at SCCIC.	2007	LAN-8269	Hollywood	Yes
Crawford, Kathleen. Direct APE Historic Architectural Assessment for T-Mobile Facility Candidate LA03295B (Jamison Properties, Inc.), 4201 Wilshire Boulevard, Los Angeles, Los Angeles County, CA. On file at SCCIC.	2006	LAN-9087	Hollywood	Yes
Ehringer, Candace et. al. Cultural Resources Assessment for the Proposed Formosa Specific Plan at Santa Monica Boulevard, West Hollywood, Los Angeles County, CA. On file at SCCIC.	2007	LAN-9304	Hollywood	Yes

**4.3.4.10 MOS 2—Century City Station Terminus**

There are no previously recorded archaeological resources identified within the proposed MOS 2-Century City Station Terminus.

Previously recorded archaeological resources identified within a .25 mile range of the proposed MOS 2-Century City Station Terminus APE are the same as those in MOS 1-Fairfax Station Terminus APE (Table 4-6).

Previously conducted archaeological surveys within a 0.25-mile radius of the APE for MOS 2-Century City Station Terminus are the same as those conducted in MOS 1-Fairfax Station Terminus (Table 4-7).

**4.3.4.11 Maintenance and Operation Facility Sites**

Within and adjacent to the planned maintenance and operation facilities are a number of properties within a 0.25-mile radius. Below is a list of previously identified resources.

**Table 4-8: Known Historic Properties Previously Documented Within the APE for the Maintenance and Operation Facility Sites (NRHP Eligible or Listed Along Alignment)**

Primary No.	Trinomial	Site Description	USGS Quadrangle (7.5 Minute)	Recorded
19-002563	CA-LAN-2563	Historic trash dating from 1860-1892	Los Angeles	1997
19-002610	CA-LAN-2610	Early historic cobblestone street- Little Tokyo Historic District	Los Angeles	1997
19-003169	CA-LAN-3169	Historic period abandoned railroad siding	Los Angeles	2003
19-003338	CA-LAN-3338	Late 19th/Early 20th Century historic trash dump	Los Angeles	2000
19-003339	CA-LAN-3339	Late 19th/Early 20th Century historic trash dump	Los Angeles	2000
19-003340	CA-LAN-3340	Late 19th/Early 20th Century historic trash dump	Los Angeles	2000
19-003352	CA-LAN-3352	Zanja No. 6-1 (1900) and associated historic artifacts	Los Angeles	2005
19-003353	CA-LAN-3353	Late 19th/Early 20th Century historic trash dump	Los Angeles	2005
19-003683	CA-LAN-3683	Late 19th/Early 20th Century historic trash dump	Los Angeles	2003
19-186110/30-176630	None assigned	Early portions of Union Pacific Railroad	Los Angeles	1999
19-186112	None assigned	Early portions of Union Pacific Railroad	Los Angeles	1999

## 4.4 Environmental Impacts/Environmental Consequences

If any resources are identified which are listed in or appear eligible for inclusion in the National Register of Historic Places or California Register of Historical Resources, the Criteria of Effect and Adverse Effect (36 CFR Part 800.9) will be applied. A finding of adverse effect under these criteria will also be considered a significant impact under CEQA as a substantial adverse change in the significance of an archaeological resource.

### 4.4.1 Identification of Effects, Adverse Effects, and Significant

Potential effects to archaeological resources have been assessed by proposed alternative. Given the nature of the built environment, a survey of above ground features as well as the statistical modeling was accomplished. For the archaeological analysis, areas where significant sidewalk disturbance to utility replacement or other development took place were noted and not included in the areas where the potential for deposits is indicated.

#### 4.4.1.1 No Build Alternative

The No Build Alternative does not have the potential to affect archaeological resources since no excavation will be undertaken as a result of the proposed project, no archaeological resources will be affected, and therefore, none will be impacted.

**4.4.1.2 Alternative 1—Westwood/UCLA Extension**

As a result of the previous identification of archaeological resources within and adjacent to the proposed APE for Alternative 1 this alternative has the potential to have an effect on cultural resources pertaining to intact archaeological deposits.

Given the historic period nature of the built environment, which often did not disturb more than a few feet of topsoil, there is a potential for construction to encounter subsurface prehistoric and/or historic archaeological deposits.

The Phase I Pedestrian Survey traversed the alternative on foot. While native soils were primarily obscured by the built environment, identification of the original built date for streetscapes, structures, buildings and modifications to the built environment enabled an assessment of the potential for the sub-surface disturbance thereby providing an interpretation of the potential for buried.

Figure 4-4 through Figure 4-12 show locations of areas with an increased potential for the presence of buried cultural resources. These areas include the following locations.

- Areas near the VA Hospital along Wilshire near the community of Westwood have the potential for buried historic period deposits based on a sidewalk date stamp of 1930 and the presence of a now vacant lot. The surrounding community's built environment dates from the early half of the 20<sup>th</sup> century and there is indication that little to no disturbance has occurred to the subsurface in these areas (Figure 4-4).
- Continuing east along Wilshire Boulevard, near the intersection of Wilshire Boulevard and Santa Monica Boulevard, there is a sidewalk date stamp of 1927. Therefore there is an indication that historic period deposits may be present here as well due to a lack of historic disturbance of the area (Figure 4-5).
- In the area of Beverly Hills, near Wilshire Boulevard and Rodeo Drive (Figure 4-6), there have been a number of recent street improvements. However, the combination of the historic built environment and the depth of improvements from the proposed project could reveal the presence of subsurface historic deposits.
- Continuing east along Wilshire to Robertson and Wilshire Boulevard (Figure 4-7), there have been a number of recent street improvements. However, the combination of the historic built environment and the depth of improvements from the proposed project could reveal the presence of subsurface historic deposits.
- In the area of La Cienega and Wilshire Boulevard, sidewalk date stamps range from 1926 to 1955, and there is a potential for historic period buried deposits that date from as late as 1955 to as early as 1926 or earlier in this location (Figure 4-8).
- Along Wilshire Boulevard, past San Vicente, a sidewalk date stamp indicates a modification date of 1967. While there is a potential for buried deposits, it is less likely that historic period deposits will be identified as significant (Figure 4-9).



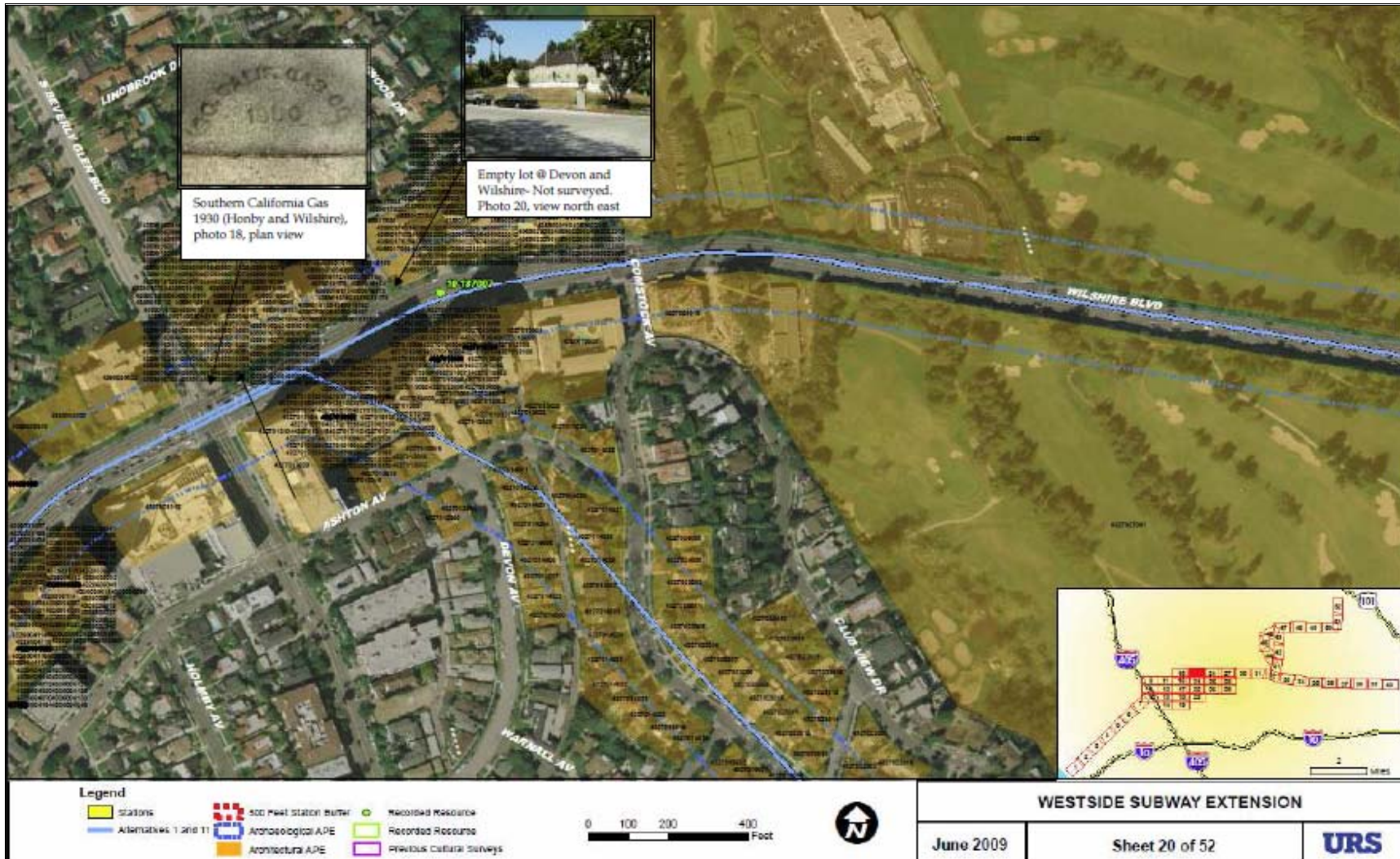


Figure 4-4: Areas with Potential Archaeological Deposits (Wilshire Blvd. between S. Beverly Glen Blvd. and Comstock Ave.)

WESTSIDE SUBWAY EXTENSION





Figure 4-5: Areas with Potential Archaeological Deposits (Wilshire Blvd. between Santa Monica Blvd. and N. Rodeo Dr.)

WESTSIDE SUBWAY EXTENSION





Figure 4-6: Areas with Potential Archaeological Deposits (Wilshire Blvd. between N. Rodeo Dr. and N. Palm Dr.)

WESTSIDE SUBWAY EXTENSION





Figure 4-7: Areas with Potential Archaeological Deposits (Wilshire Blvd. between N. Palm Dr. and N. Arnaz Dr.)

WESTSIDE SUBWAY EXTENSION





Figure 4-8: Areas with Potential Archaeological Deposits (Wilshire Blvd. between N. Arnaz Dr. and N. Gale Dr.)

WESTSIDE SUBWAY EXTENSION





Figure 4-9: Areas with Potential Archaeological Deposits (Wilshire Blvd. between San Vicente Blvd. and S. Crescent Ave.)





Figure 4-10: Areas with Potential Archaeological Deposits (Wilshire Blvd. between S. Curson Ave. and S. Cochran Ave.)