

Appendix C

Affected Parcels

Appendix C—Affected Parcels

Table C-1: Build Alternative – Parcels Affected by Temporary Construction Easements

AIN/APN	Street Address	Current Use	Partial or Full
San Dimas			
8386016034	341 W Bonita Avenue	Commercial/industrial	Partial
Montclair			
100772203	4700 Huntington Drive	Light industrial	Partial

Source: Parsons Brinkerhoff and ICF International, August 2012.

NOTE: In addition to the temporary construction easements, two construction staging areas for assembling construction materials and equipment would be needed. These staging areas (typically 1 to 1.5 acres in size) would likely be located in the general area of the flyover structures in the City of San Dimas and the City of Pomona.

Table C-2: Build Alternative – Parcels Affected by Permanent Easements

AIN/APN	Street Address	Current Use	Use
Pomona			
8371012010	N.A.	Vacant	Aerial pedestrian bridge between parking structure and station platforms

Source: Parsons Brinckerhoff, August 2012

Table C-3: Build Alternative – Acquisitions

AIN/APN	Street Address/Owner	Current Use	Use	Acquisition	Approx. Size of Acquisition
Glendora					
8649028012	N.A.	Vacant land	Traction power supply substation (TPSS) B-2	Full	3,000 - 3,500 sq ft
8639016016	410 S. Vermont Avenue	Commercial/industrial	Parking structure (Option 1)	Partial	9,000 - 9,800 sq ft
8639016016	410 S. Vermont Avenue	Commercial/industrial	Parking structure (Option 2)	Full	1.9 acres
8655019017	N.A.	Vacant land	Route 66 bridge construction	Partial	5,800 - 6,300 sq ft
N.A.	Public right-of-way	I-210 Freeway	TPSS B-3	Partial	1,500 - 2,000 sq ft
San Dimas					
8386008030	N.A.	Vacant land	TPSS B-4	Partial	3,200 - 3,800 sq ft
8390022908	301 S. Walnut Avenue	City maintenance facility	Parking structure	Full	1.56 acres
8390018907	N.A.	City maintenance facility	Parking structure	Full	0.07 acres
8390018909	N.A.	City maintenance facility	Parking structure	Full	0.65 acres
La Verne					
8378011014	1374 Palomares Street	Commercial/industrial	TPSS B-6	Full	1,800 - 2,200 sq ft
8377028005	1943 North White Avenue	Commercial/industrial	Parking structure and TPSS B-7	Full	3.3 acres
Pomona					
8371011008	2707 North Garey Avenue	Commercial/industrial	Parking structure ¹	Full	2.1 acres
Claremont					
8313021007	250 West 1 st Street	Commercial/industrial	Right-of-way	Partial	600 - 650 sq ft
8313021010	150 West 1 st Street	Commercial/industrial	Right-of-way	Partial	400 - 500 sq ft
8313021011	100 West 1 st Street	Commercial/industrial	Right-of-way	Partial	800 - 900 sq ft
8313023022	N.A.	Vacant Lot	Right-of-way	Partial	4,500 - 5,000 sq ft
8313023025	N.A.	N.A. (Parcel creation completed 07/29/2012)	Right-of-way	Partial	4,000 - 4,500 sq ft
8314017900	N.A.	Existing Metrolink parking lot	Parking structure and TPSS	Full	6.25 acres

¹ One-half of the structure for this business would be required to provide space to construct the proposed Parking structure. It is likely that the existing businesses occupying this building would not be able to operate during or following construction. Accordingly, this acquisition is considered a full take to be conservative.

AIN/APN	Street Address/Owner	Current Use	Use	Acquisition	Approx. Size of Acquisition
			B-10		
8314018800	N.A.	Commercial/industrial	Right-of-way	Partial	900 - 1,100 sq ft
Montclair					
1007722030000	4700 Huntington Drive	Light industrial	Right-of-way	Partial	1,700 - 2,100 sq ft
1007722070000	City of Montclair	Vacant lot	Right-of-way	Partial	5,500 - 6,000 sq ft
1007691050000	State of California	Montclair Transcenter/ parking lot	Right-of-way and TPSS B-11	Partial	1.0 acre

Source: Compiled by Parsons Brinckerhoff and ICF International, August 2012

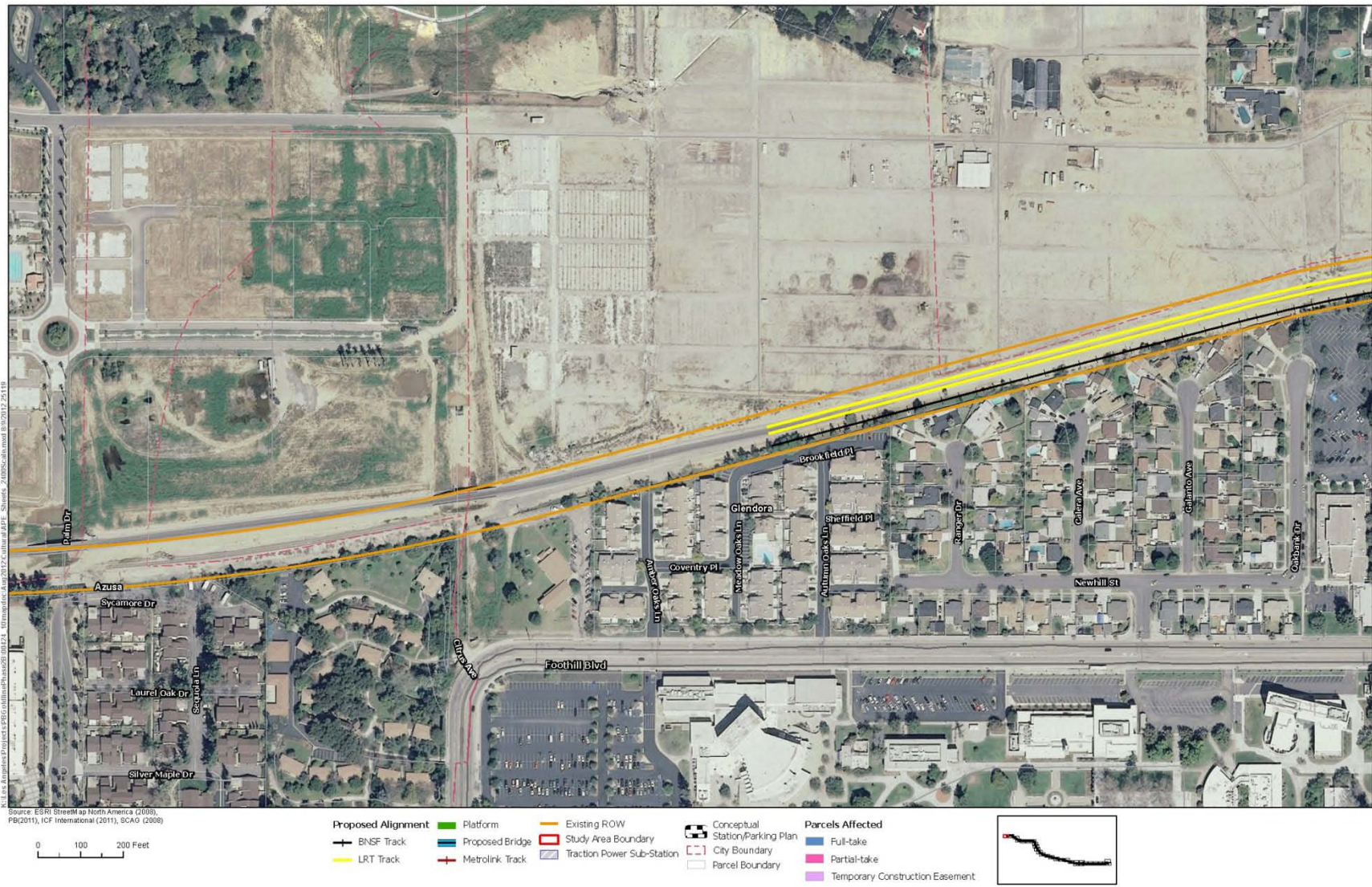


Figure C-1. Parcels Affected - City of Glendora

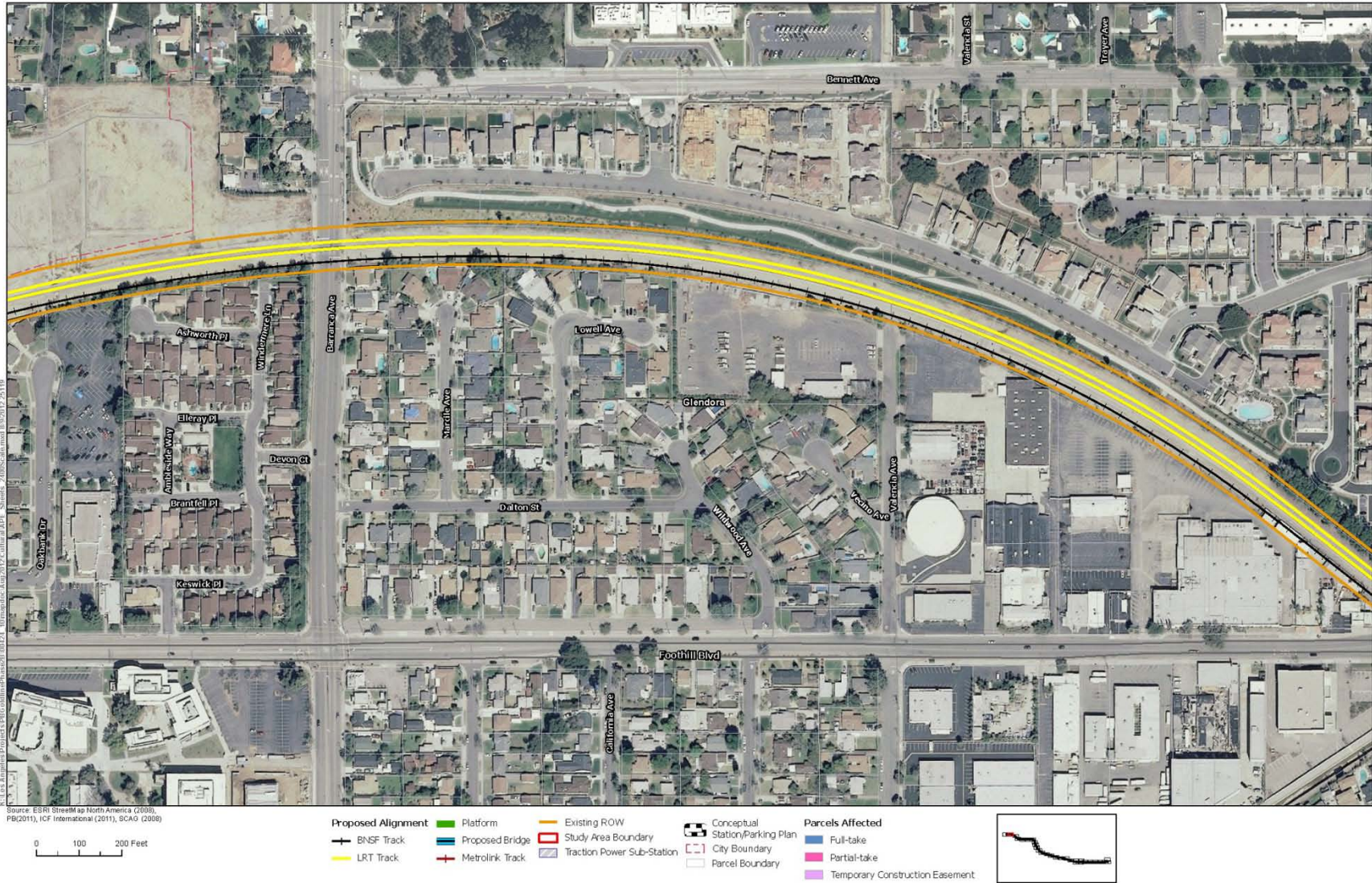


Figure C-2. Parcels Affected - City of Glendora

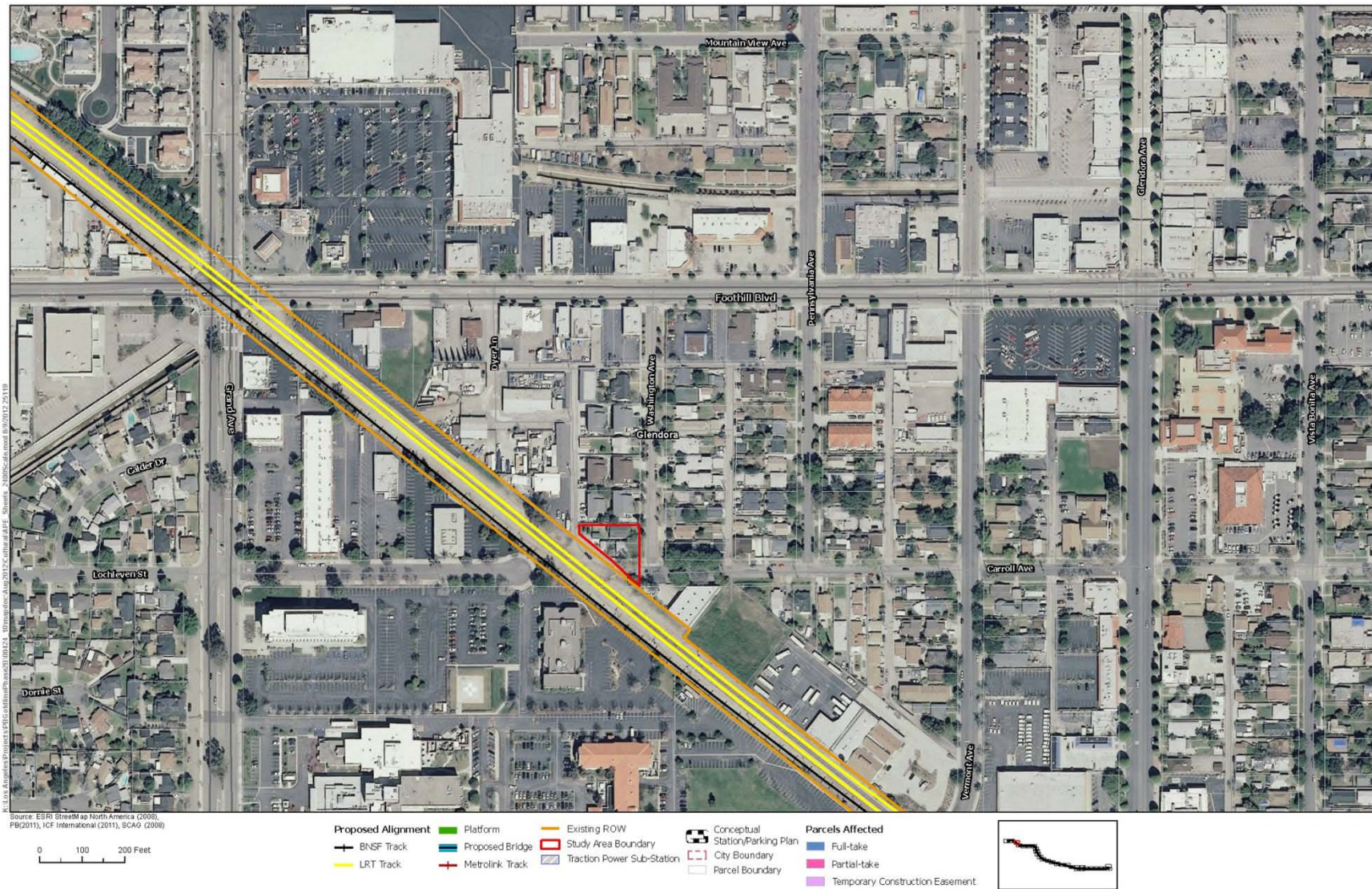


Figure C-3. Parcels Affected - City of Glendora

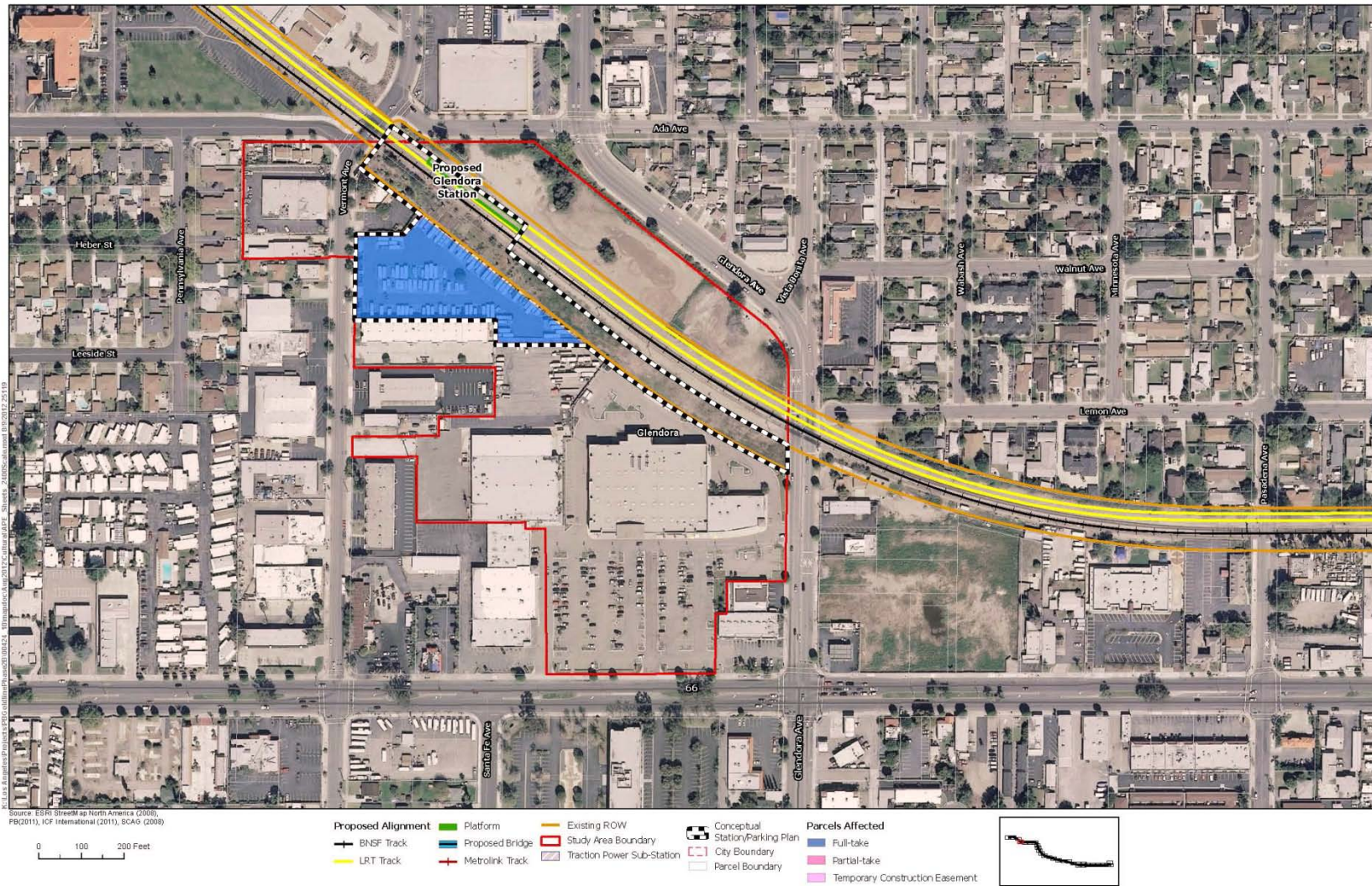


Figure C-5. Parcels Affected - City of Glendora (Option 2 Parking Structure)



Figure C-6. Parcels Affected - City of Glendora

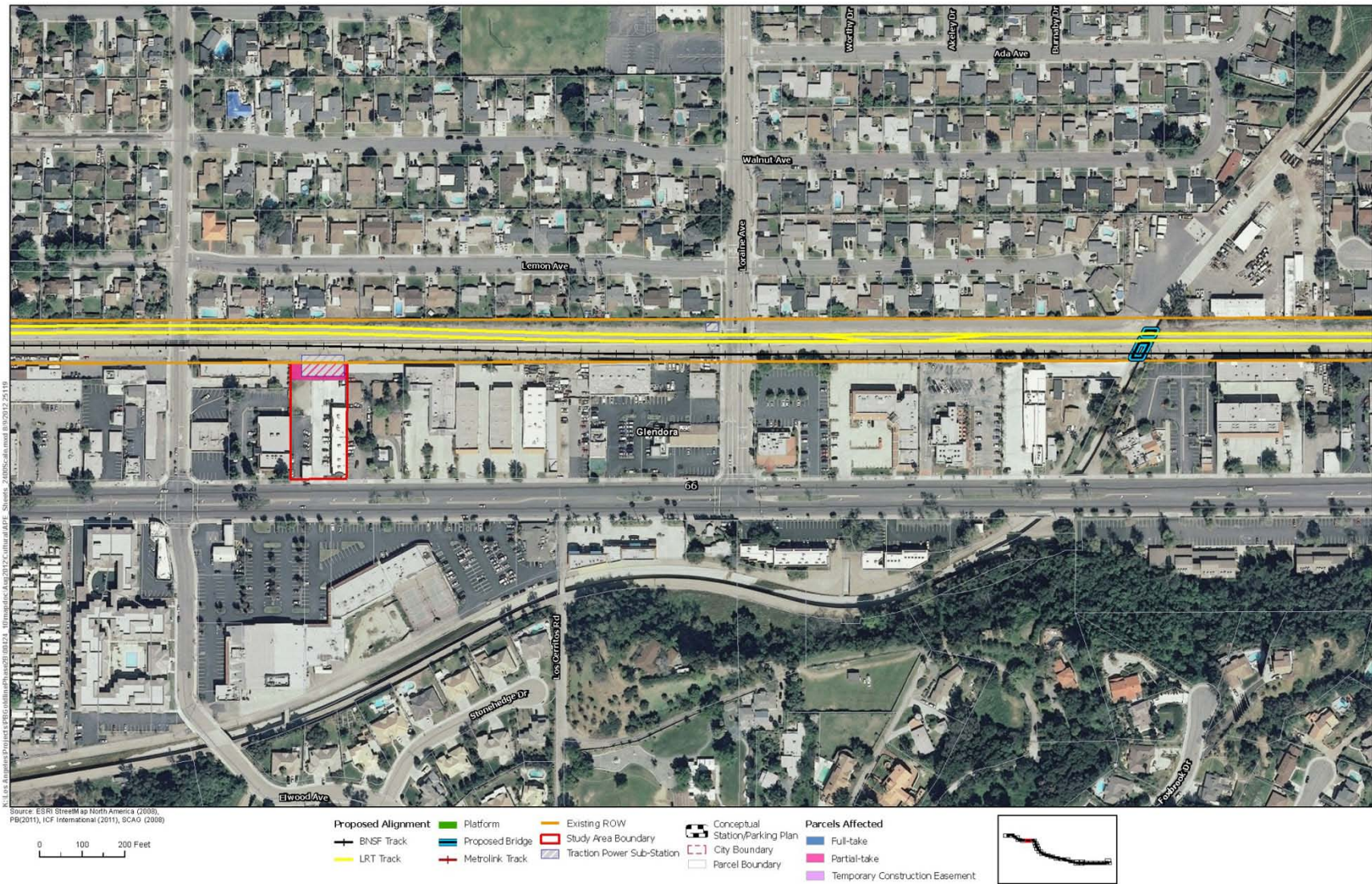


Figure C-7. Parcels Affected - City of Glendora

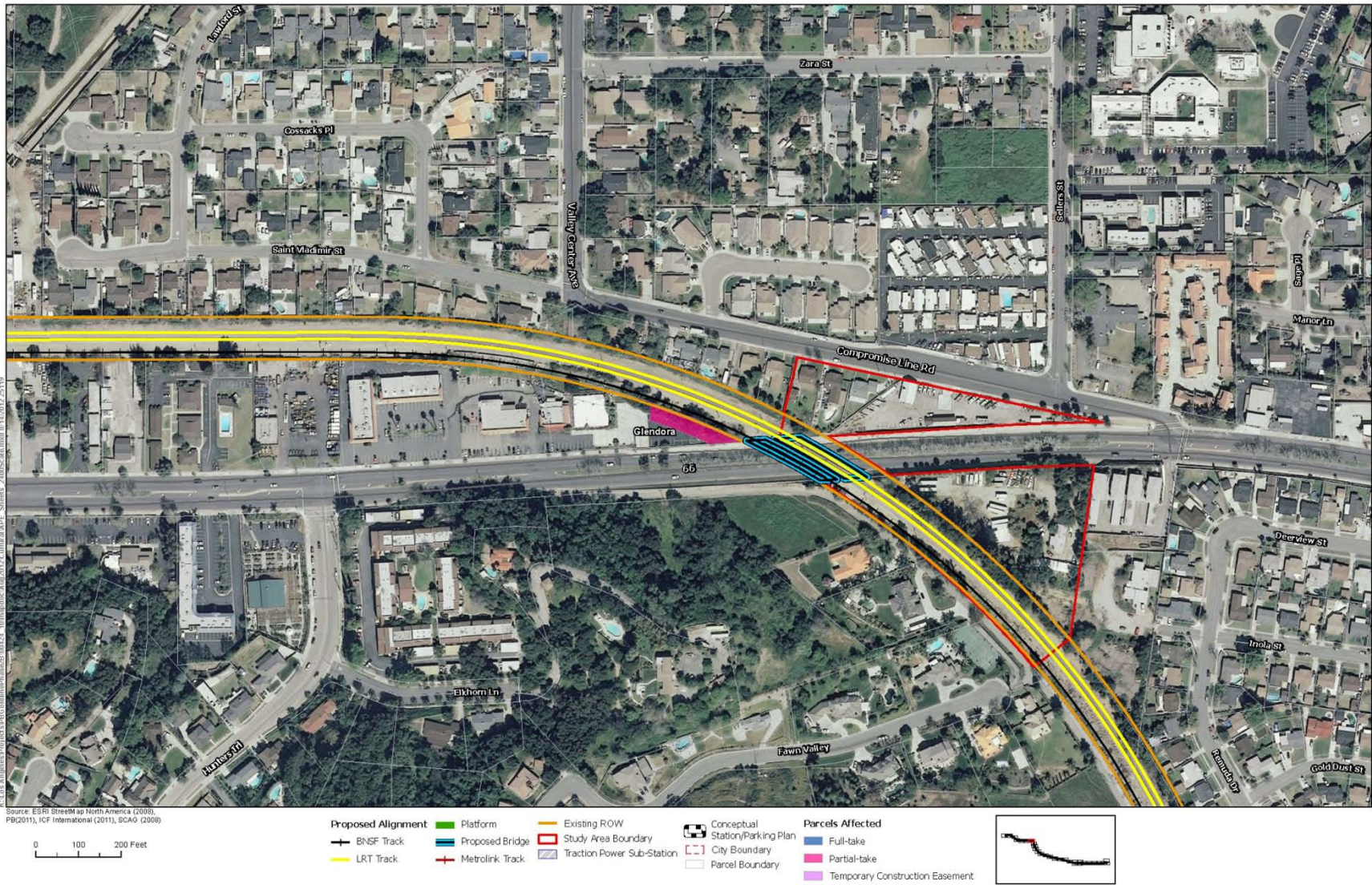


Figure C-8. Parcels Affected - City of Glendora



Figure C-9. Parcels Affected - City of Glendora

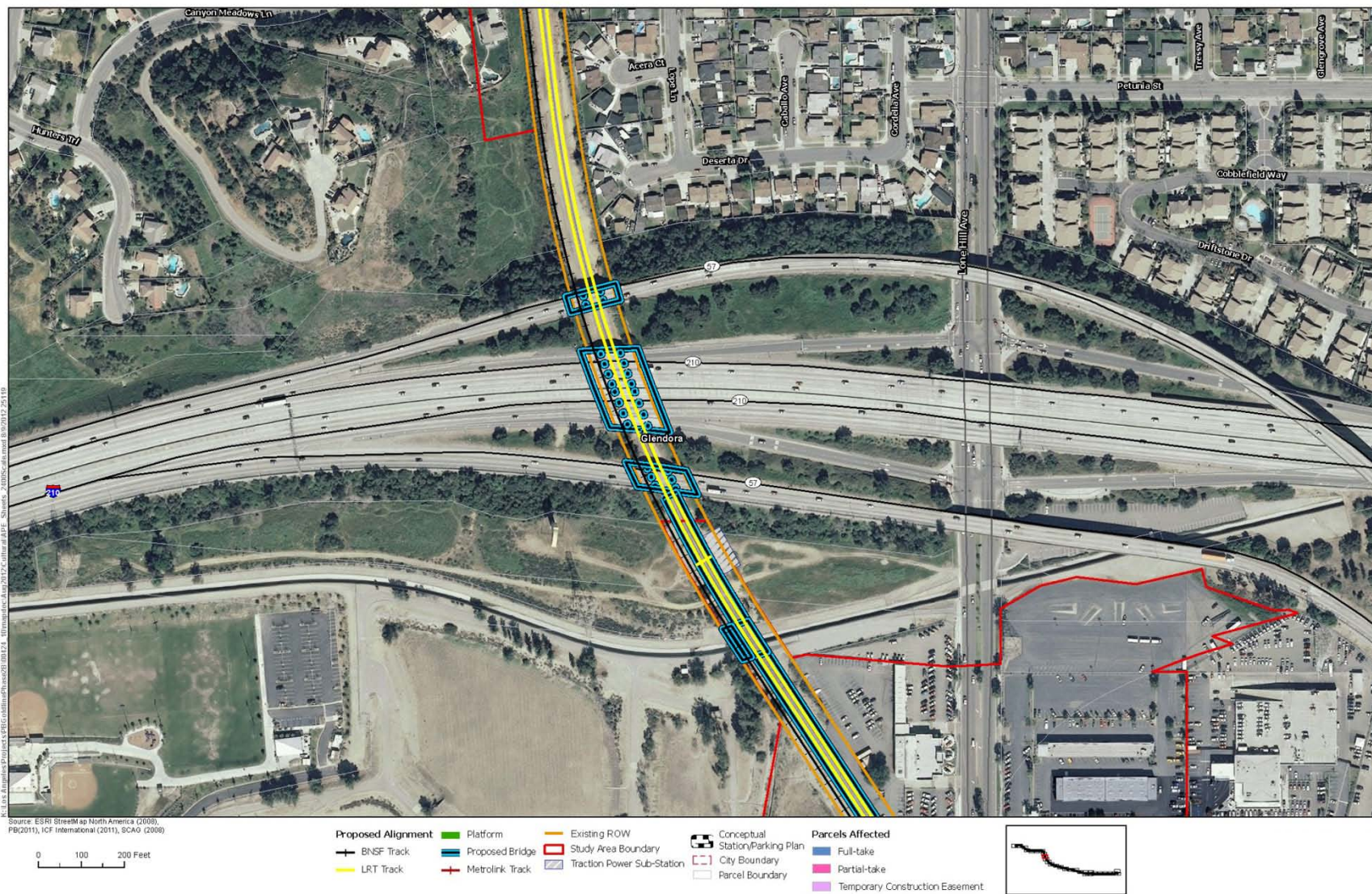


Figure C-10. Parcels Affected - City of Glendora

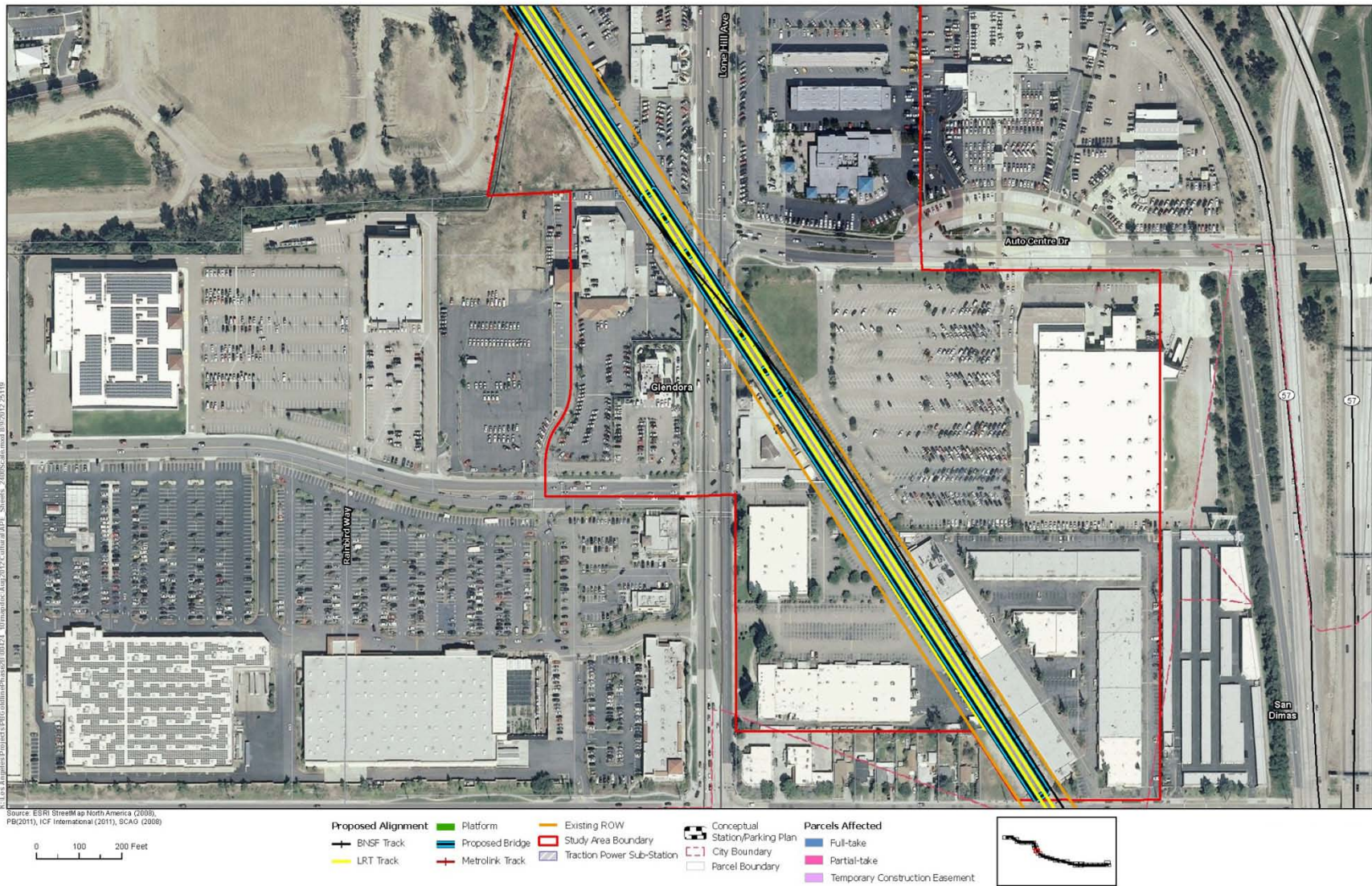


Figure C-11. Parcels Affected - City of Glendora

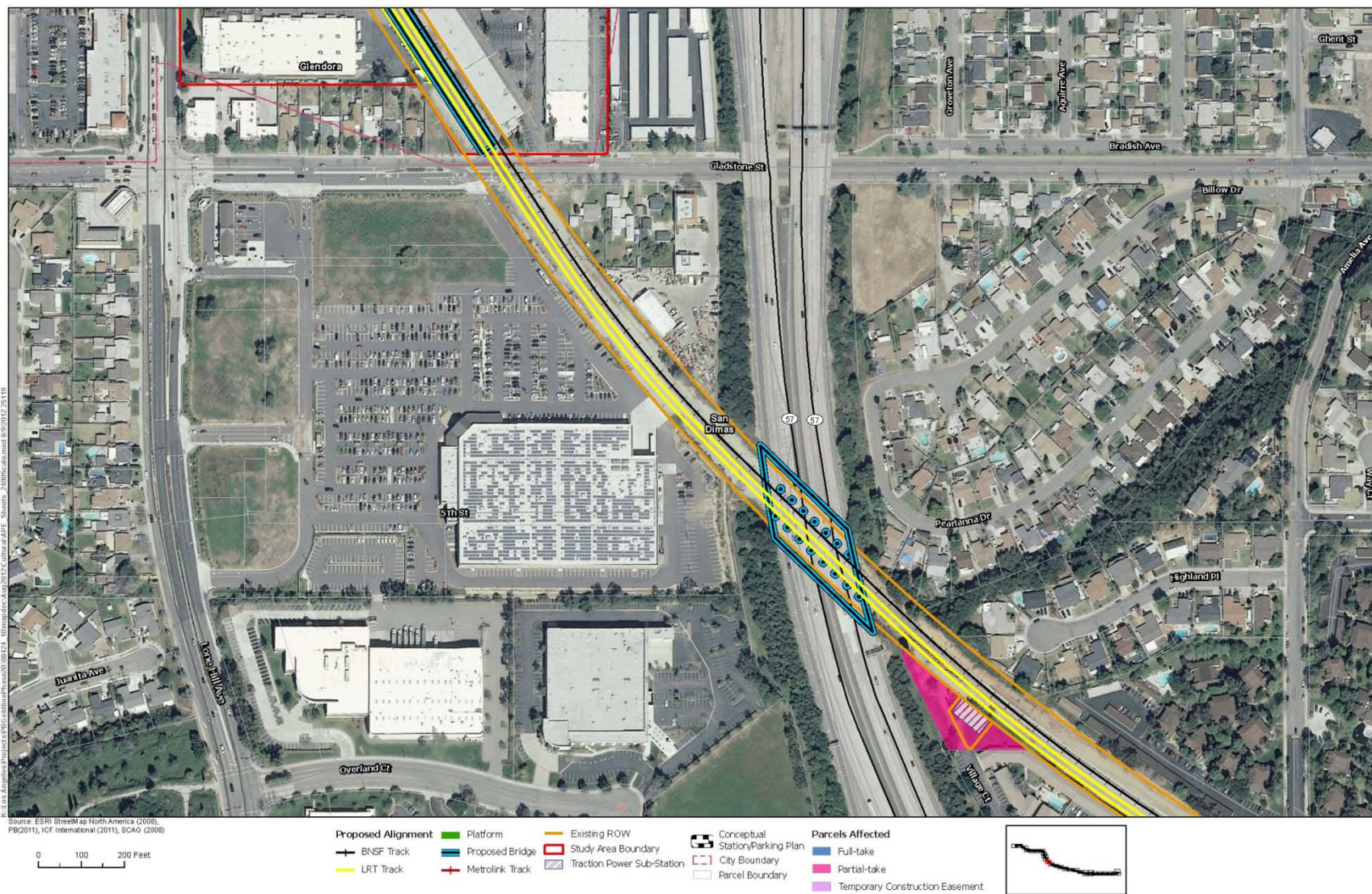


Figure C-12. Parcels Affected - City of San Dimas

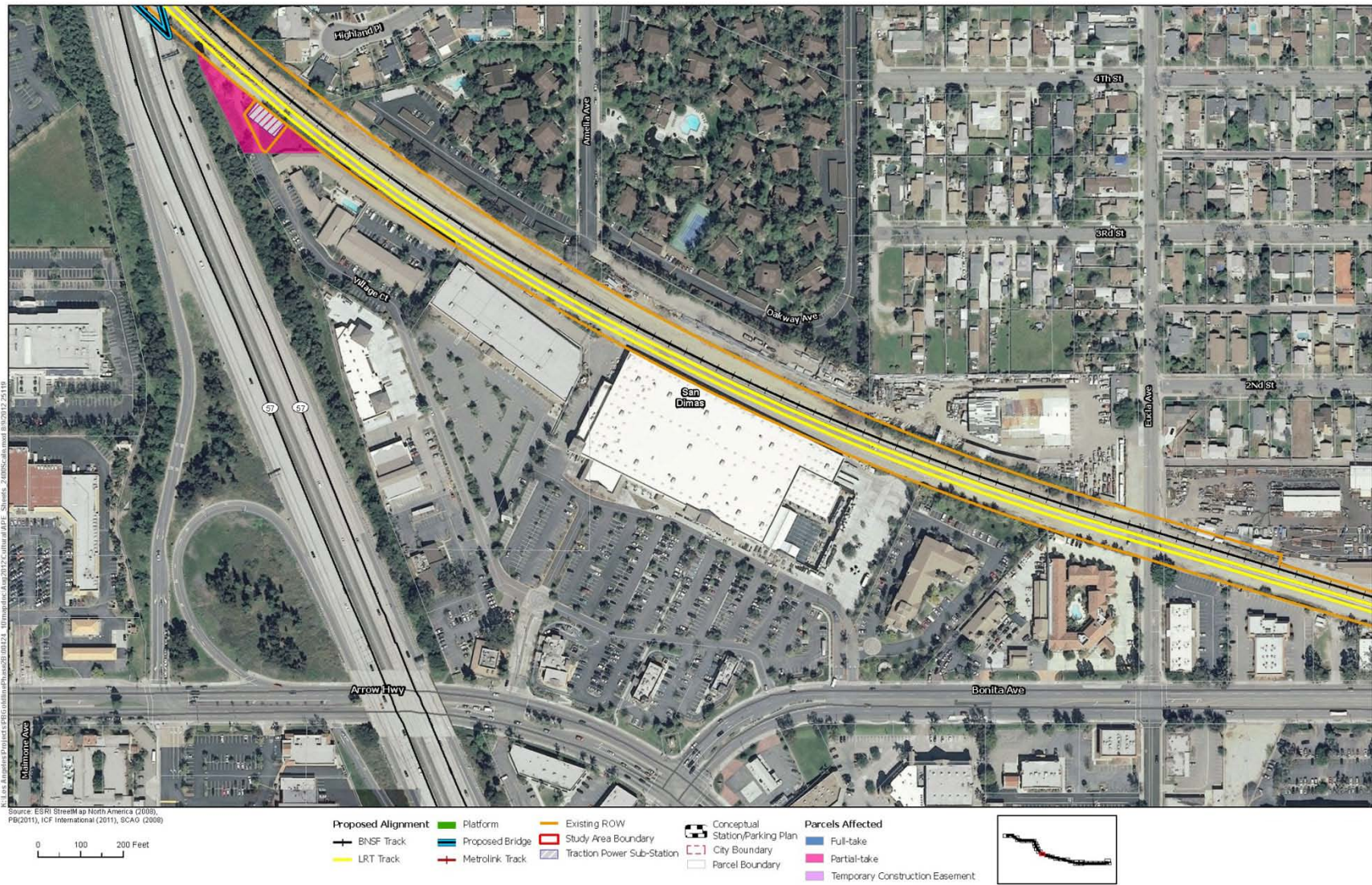


Figure C-13. Parcels Affected - City of San Dimas

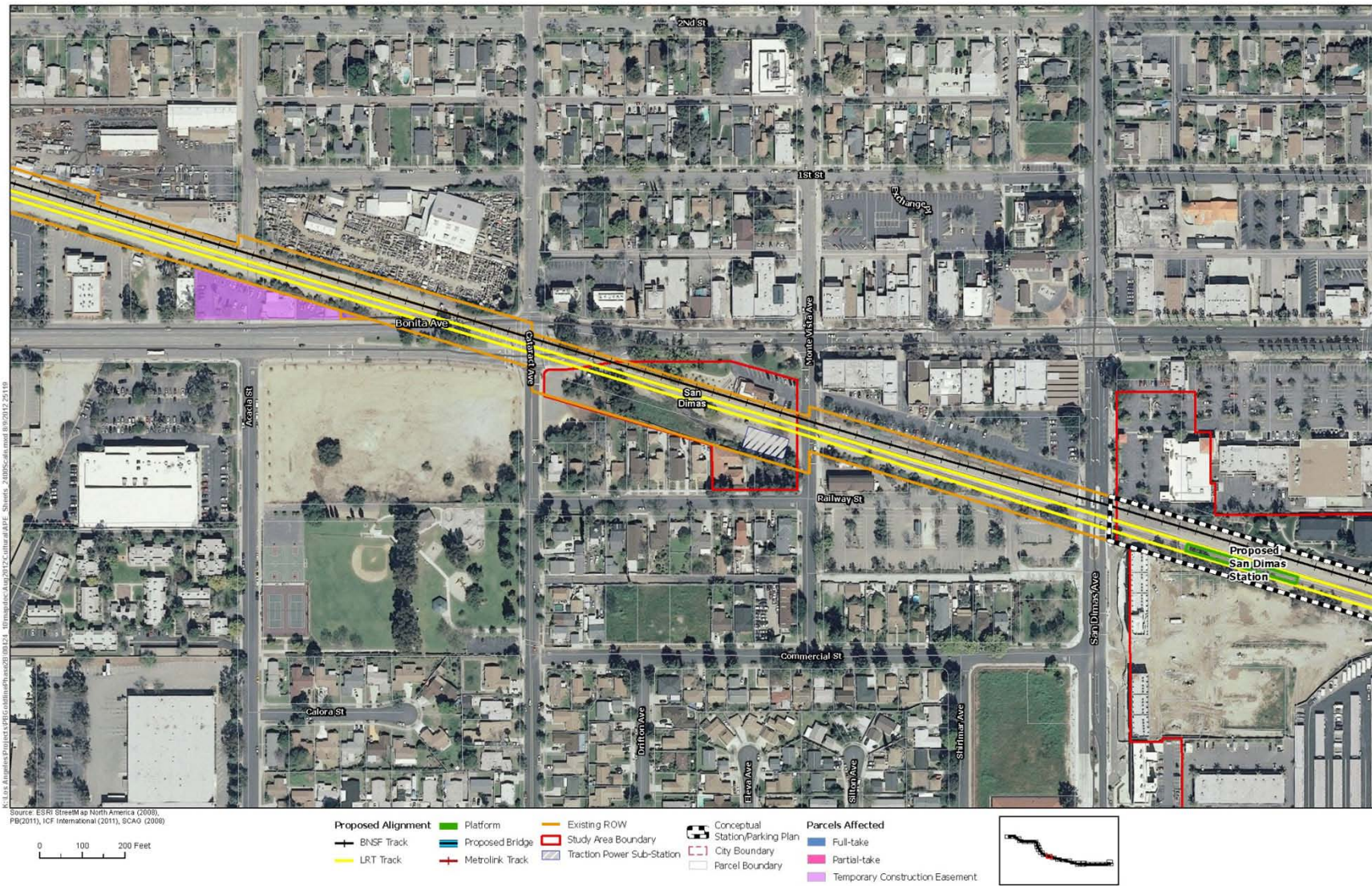


Figure C-14. Parcels Affected - City of San Dimas

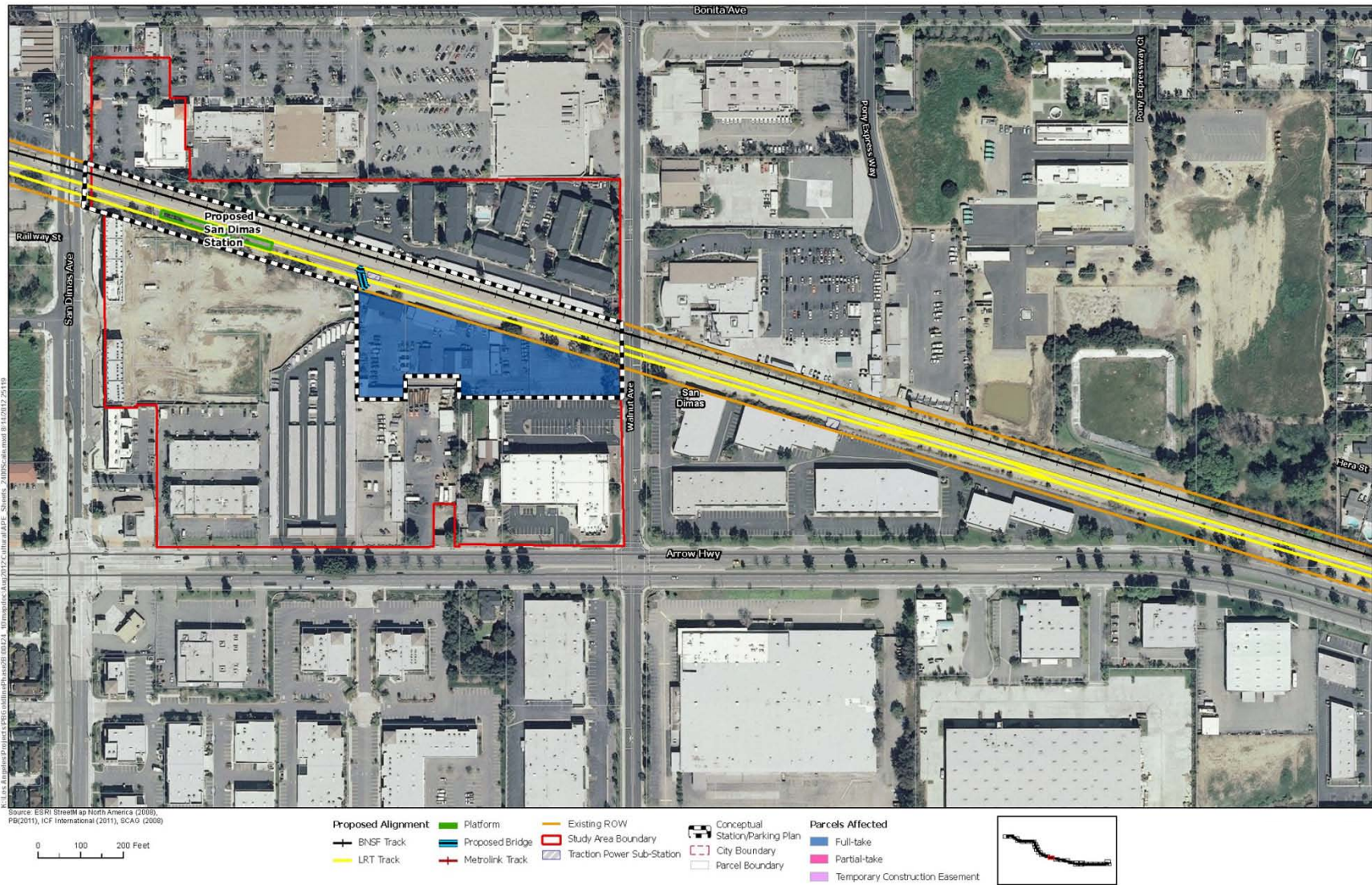


Figure C-15. Parcels Affected - City of San Dimas



Figure C-16. Parcels Affected - City of La Verne



Figure C-17. Parcels Affected - City of La Verne

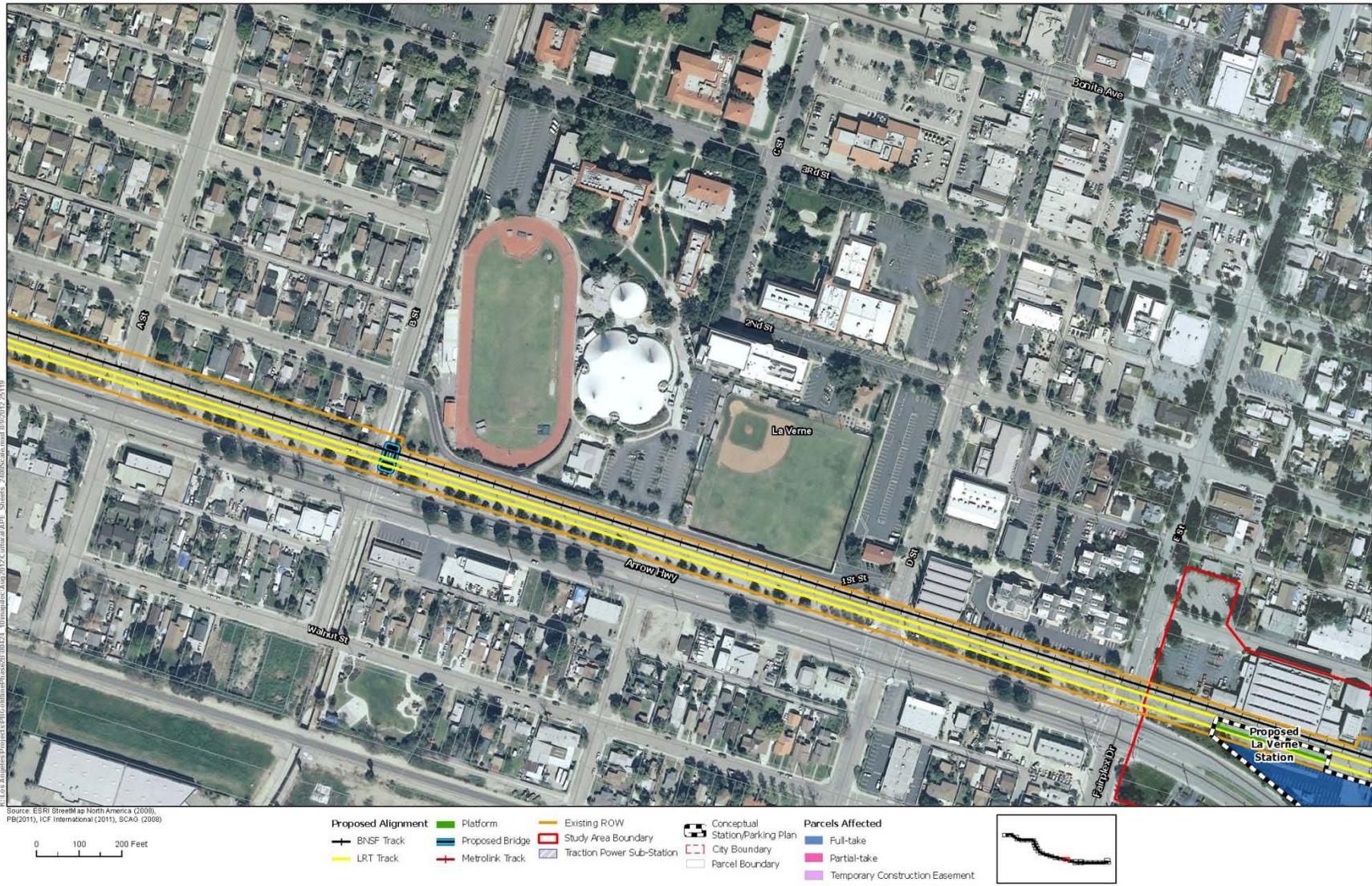


Figure C-18. Parcels Affected - City of La Verne

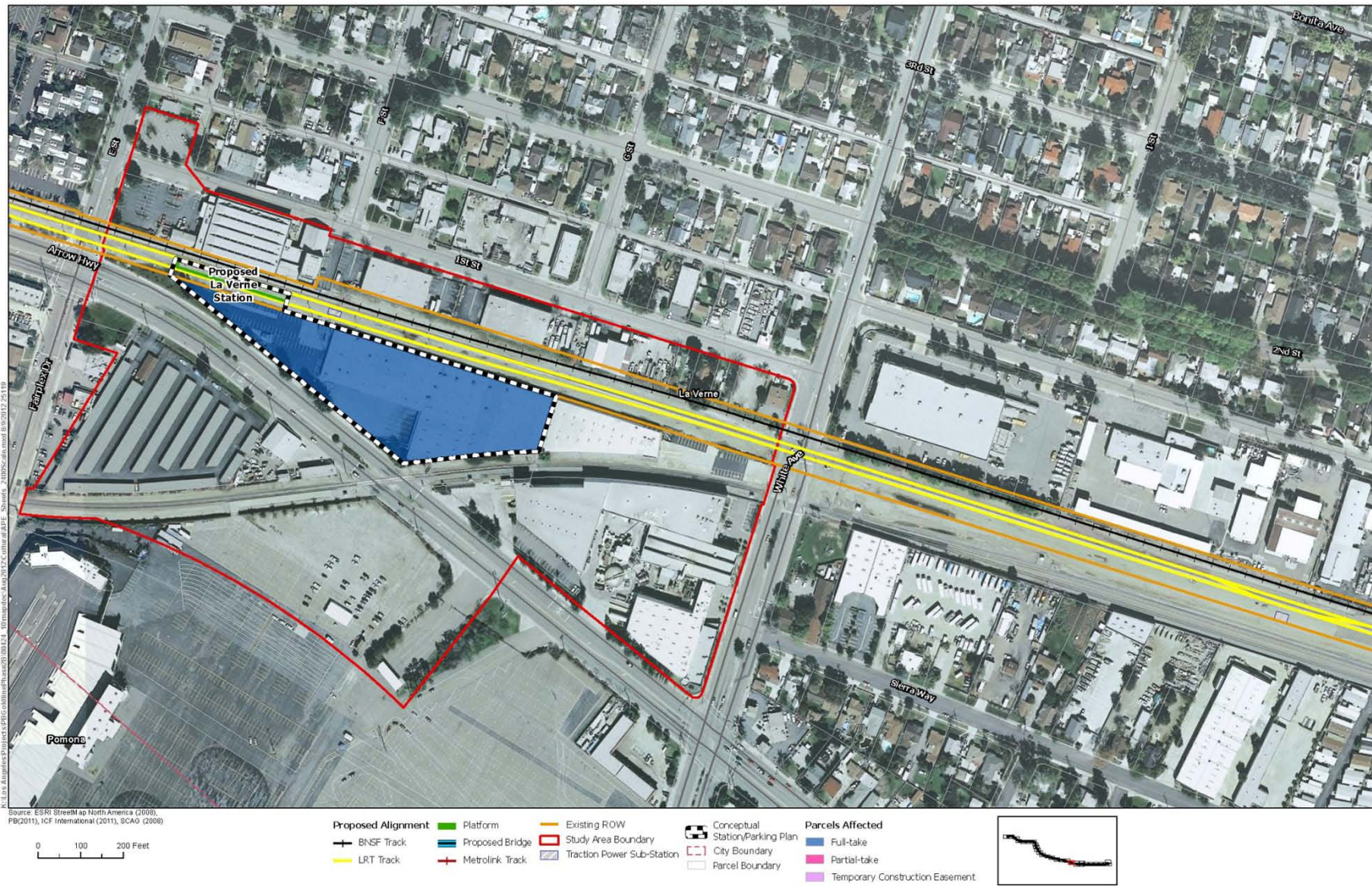


Figure C-19. Parcels Affected - City of La Verne

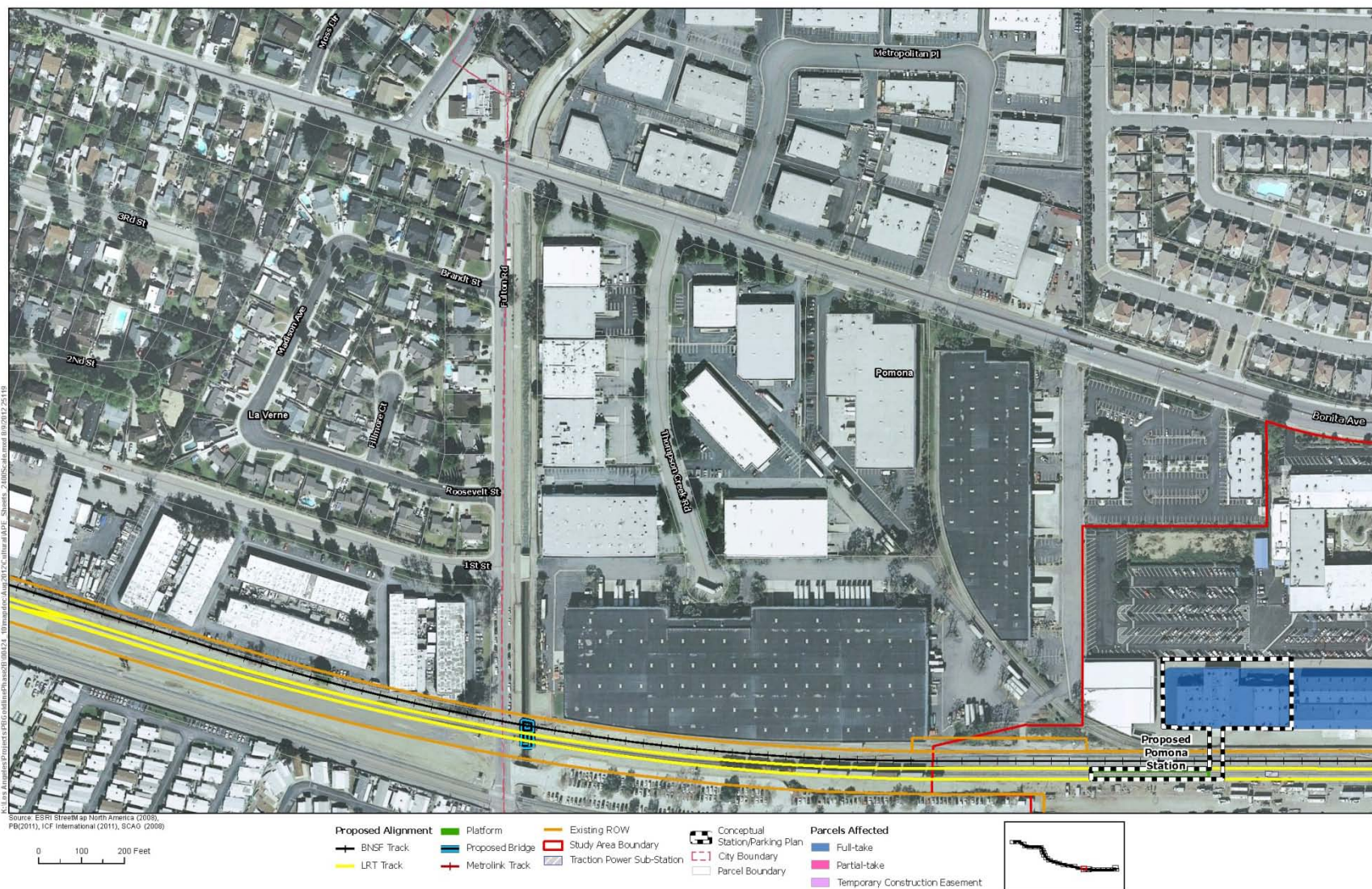


Figure C-20. Parcels Affected - City of La Verne/City of Pomona

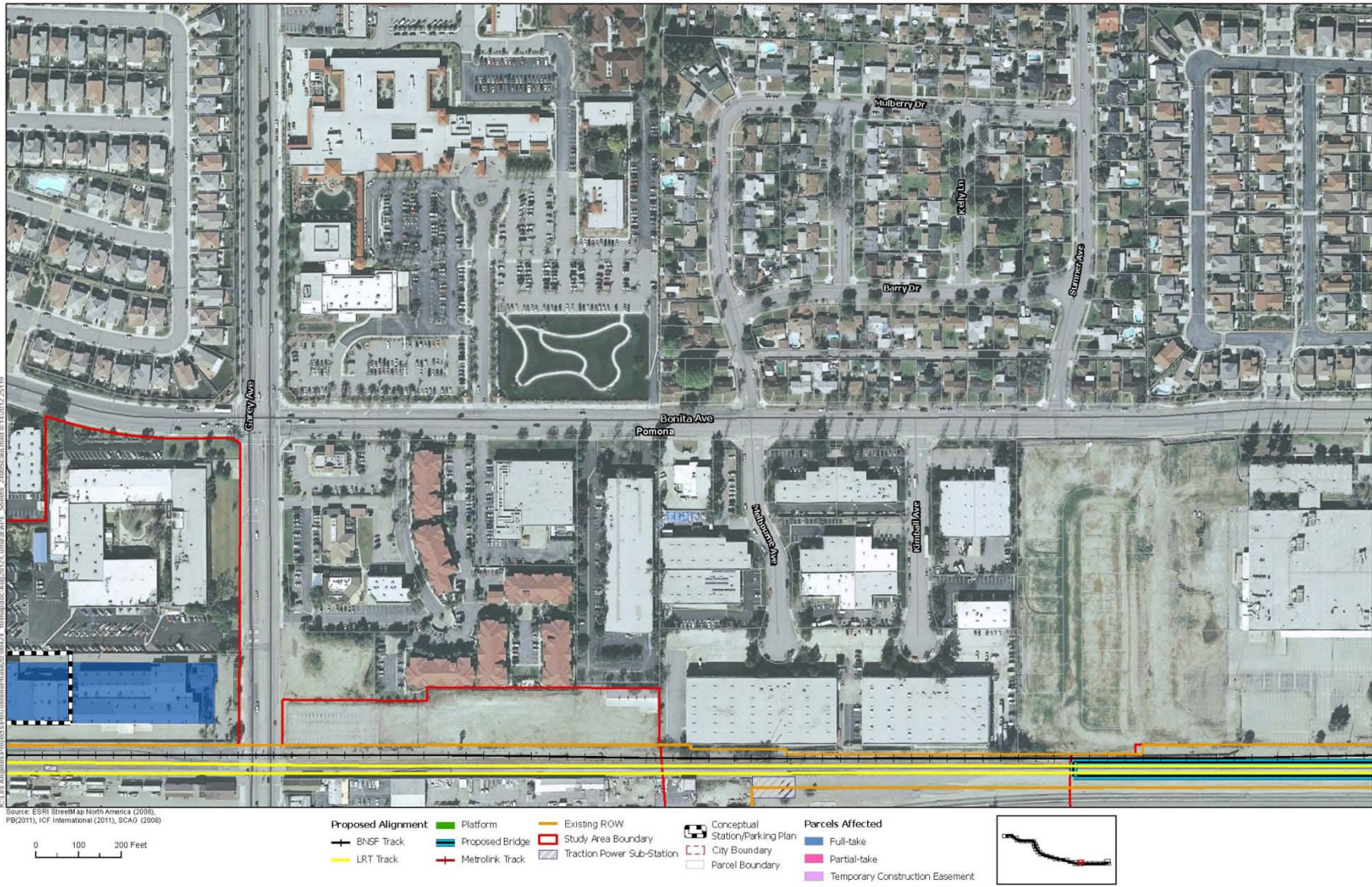


Figure C-22. Parcels Affected - City of Pomona

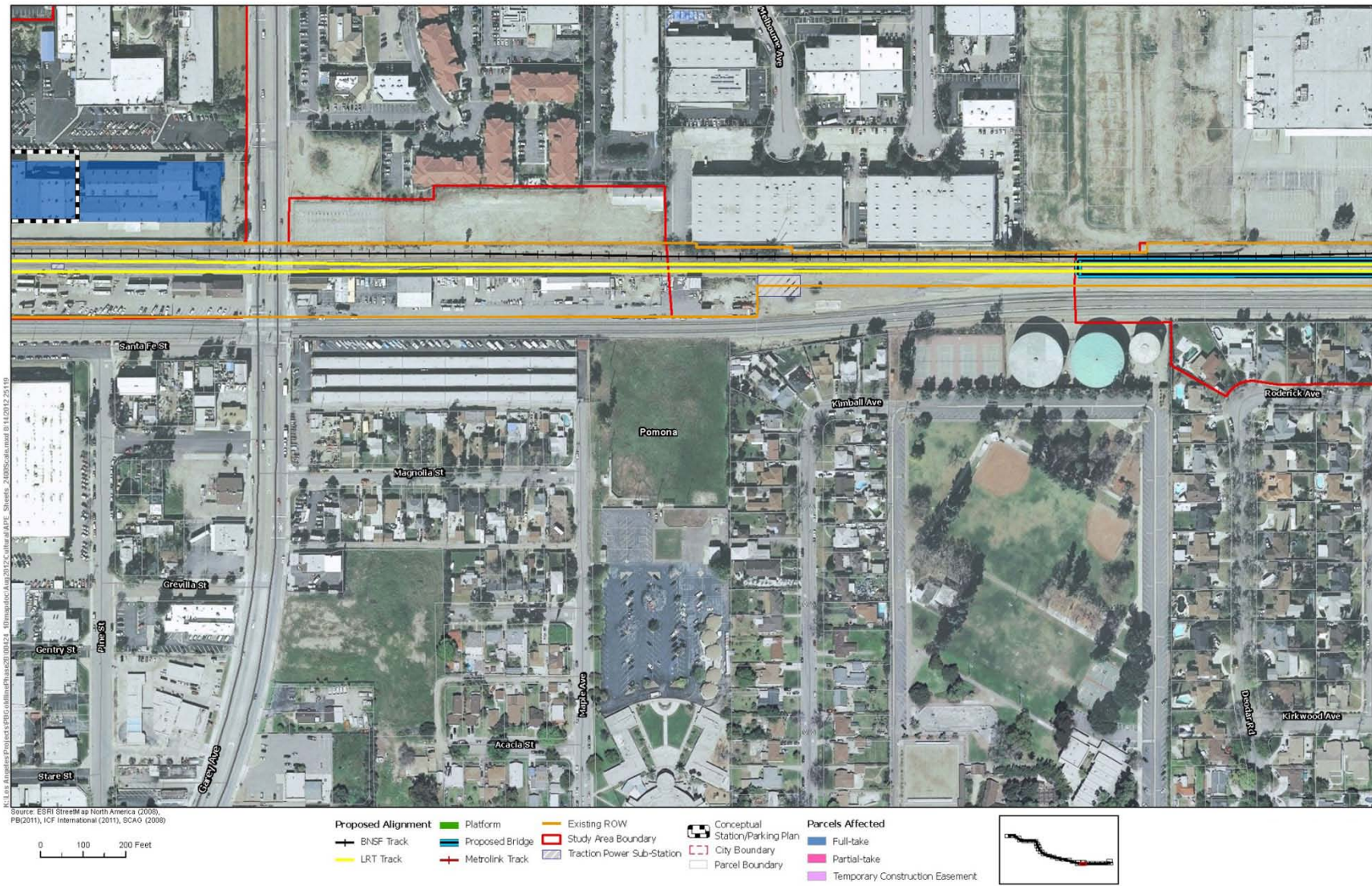


Figure C-23. Parcels Affected - City of Pomona

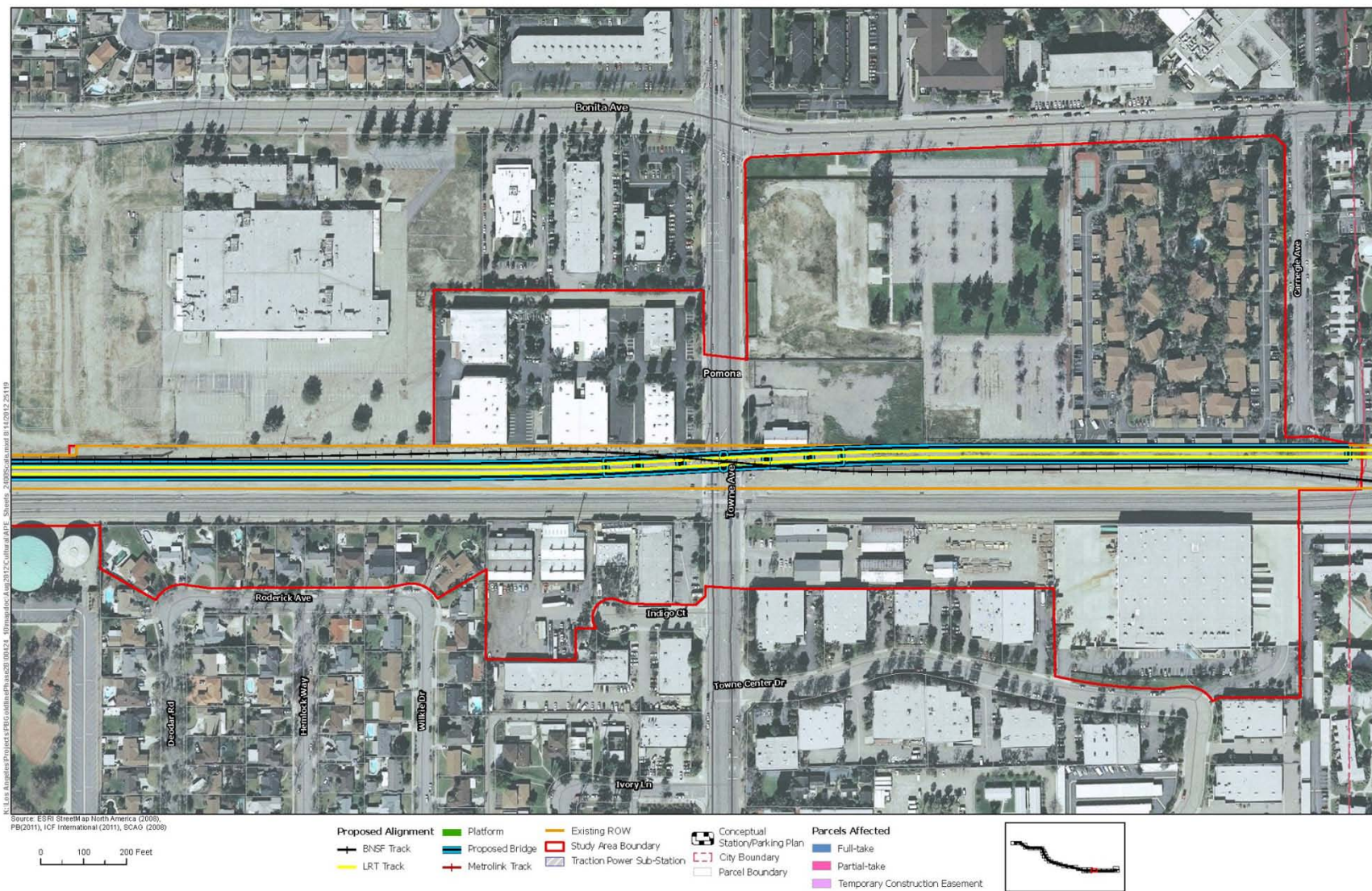


Figure C-24. Parcels Affected - City of Pomona

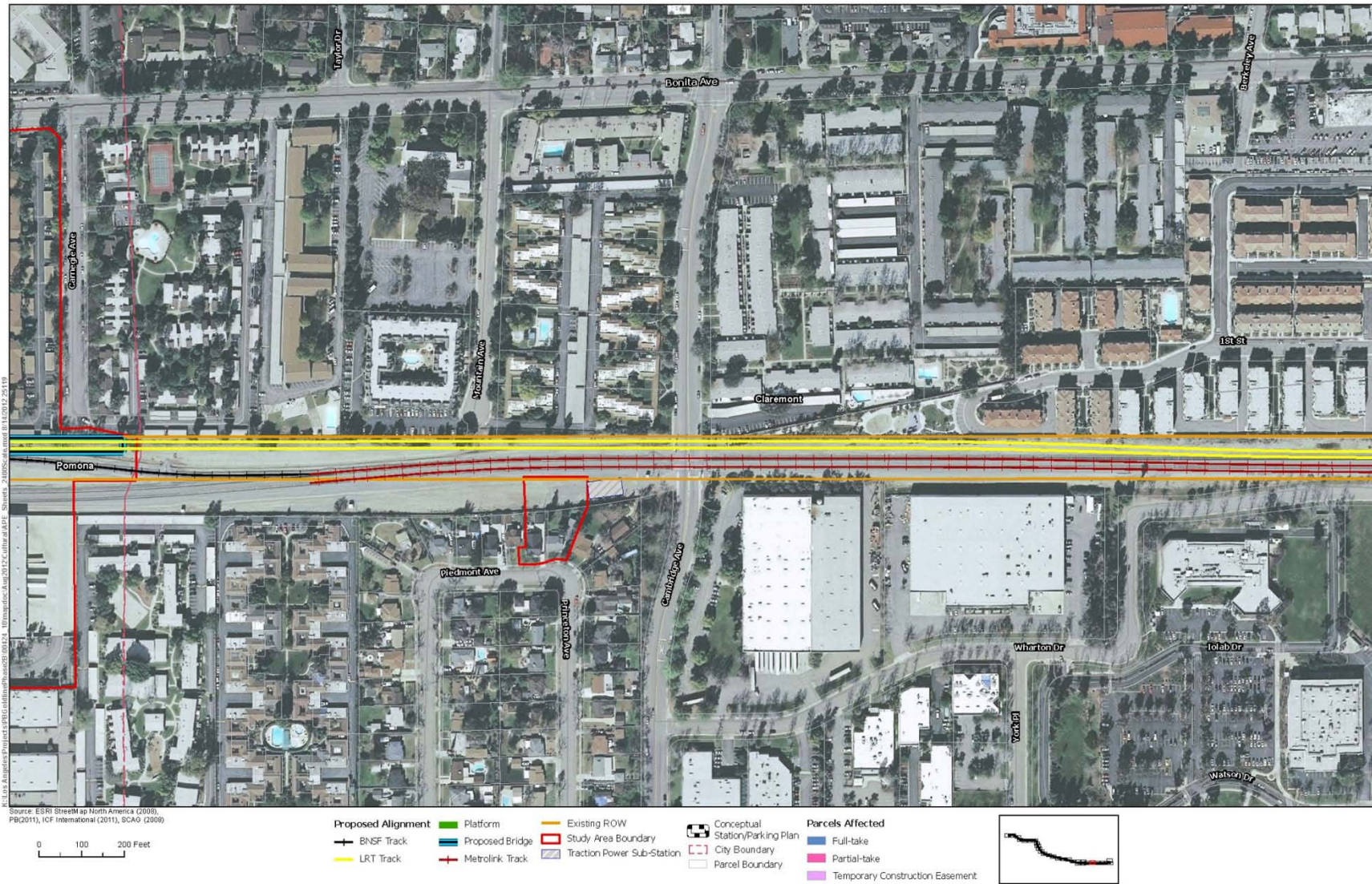


Figure C-25. Parcels Affected - City of Claremont

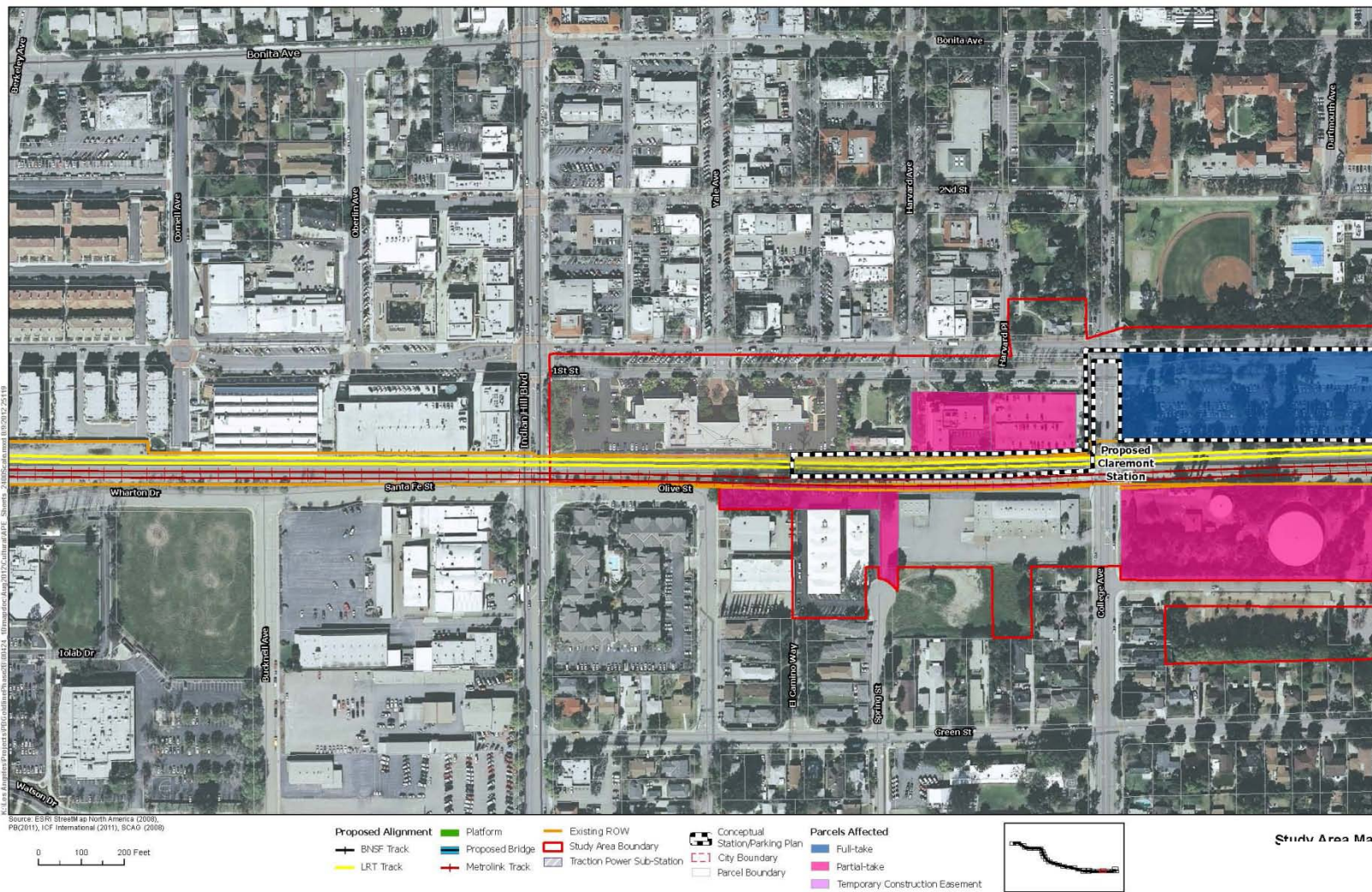


Figure C-26. Parcels Affected - City of Claremont



Figure C-27. Parcels Affected - City of Claremont

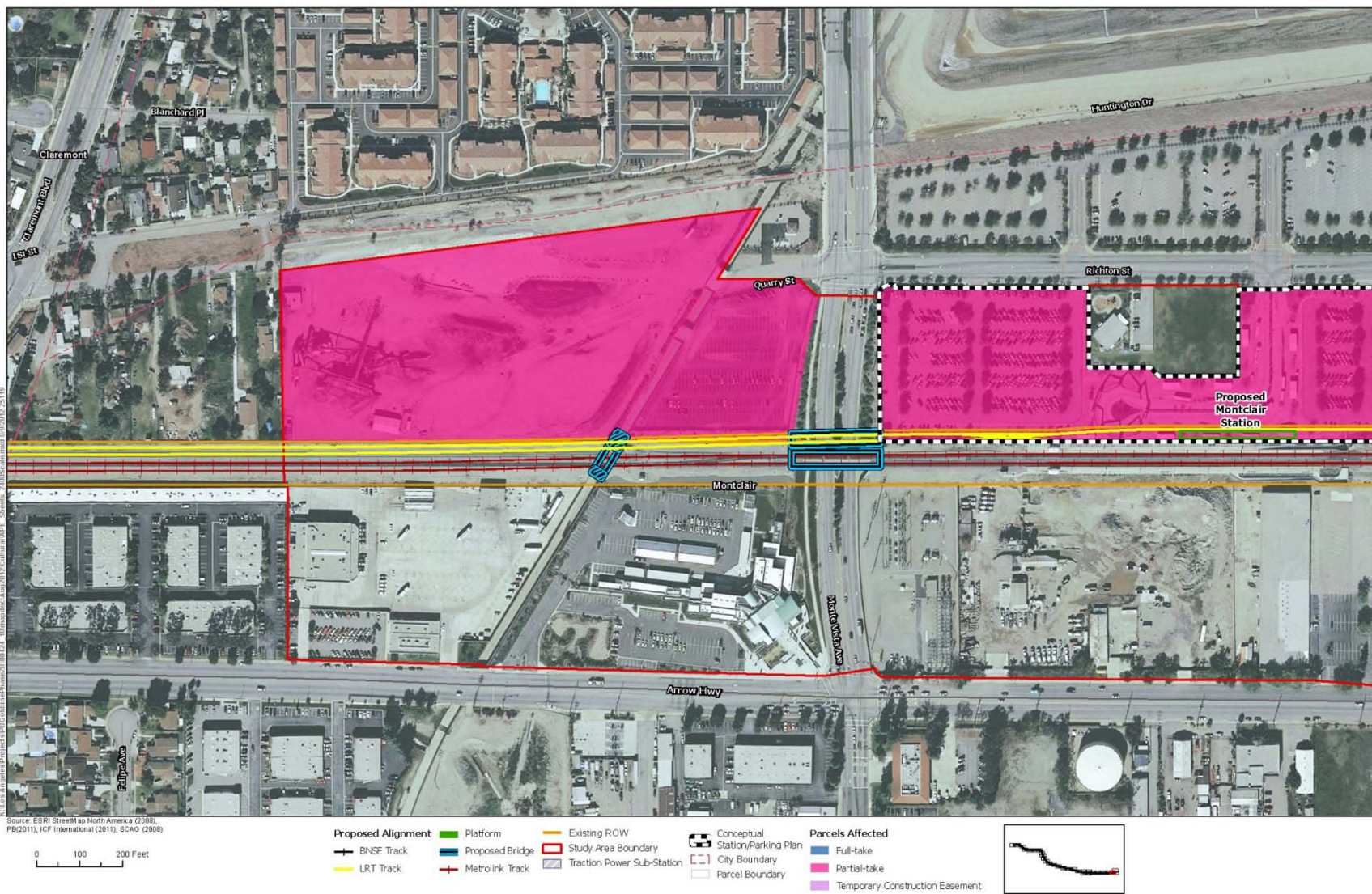


Figure C-28. Parcels Affected - City of Montclair



Figure C-29. Parcels Affected - City of Montclair

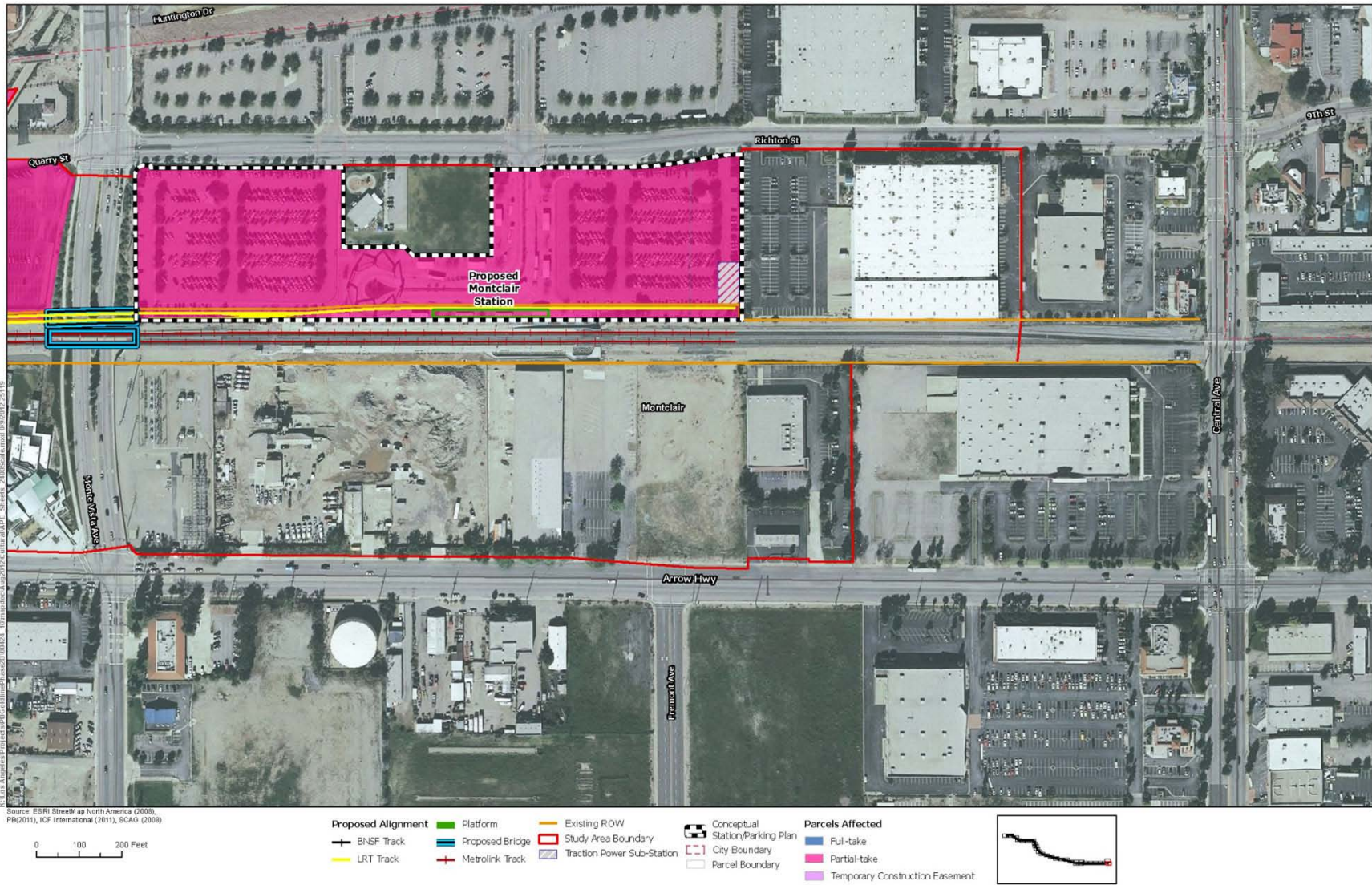


Figure C-30. Parcels Affected - City of Montclair

