

**ATTACHMENT F:**

**RECORDS SEARCH RESULTS**

Street #	Direction	Street	City	PrimaryString	ResourceName	Xrefs	Attribs	RecordingEvents
				P-19-150041	East Wynyate		HP02 (Single family property)	1993 (Anne Schield, Cal Trans)
				P-19-150042	Otake/Nambu House		HP02 (Single family property)	1994 (Anne Schield, Caltrans)
				P-19-150043	Residence for Mrs T I O'Connor	See also 19-185077	HP02 (Single family property)	1994 (F. Smith, L. Zier, Myra L. Frank & Associates)
				P-19-150044	Residence for J F Torrance	See also 19-185076	HP02 (Single family property)	1994 (F. Smith, L. Zier, Myra L. Frank & Associates)
				P-19-150045	Residence for George H Mcllvaine	See also 19-185075	HP02 (Single family property)	1994 (F. Smith, L. Zier, Myra L. Frank & Associates)
				P-19-150046	Mr & Mrs Phillip Burton Residence	See also 19-185073	HP02 (Single family property)	1994 (Francesca Smith & Lora Zier, Myra L. Frank & Associates)
				P-19-150048	212 Wigmore Dr	See also 19-185072	HP02 (Single family property)	1994 (F. Smith, L. Zier, Myra L. Frank & Associates)
				P-19-150049	230 Wigmore Dr	See also 19-185125	HP02 (Single family property)	1994 (F. Smith, L. Zier, Myra L. Frank & Associates)
				P-19-150050	F J Millbank House	See also 19-185079	HP02 (Single family property)	1994 (F. Smith, L. Zier, Myra L. Frank & Associates)
				P-19-150053	House for Ethel Thompson	See also 19-185035	HP02 (Single family property)	1994 (F. Smith, L. Zier, Myra L. Frank & Associates)
				P-19-150054	Mrs D Hagan House	See also 19-180386	HP02 (Single family property)	1993 (D. Kane, Caltrans)
				P-19-150055	James & Fannie Hale House	See also 19-180387	HP02 (Single family property)	1993 (D. Kane, Caltrans)
				P-19-150056	Richard Kuler House (#1)	See also 19-184988	HP02 (Single family property)	1994 (F. Smith, L. Zier, Myra L. Frank & Associates)
				P-19-150057	House for Cathrine & Mary Bryce	See also 19-185058	HP02 (Single family property)	1994 (F. Smith, L. Zier, Myra L. Frank & Associates)
				P-19-150058	Richard Kumler House (#2)	See also 19-185020	HP02 (Single family property)	1994 (F. Smith, L. Zier, Myra L. Frank & Associates)
				P-19-150059	House for Dr Louise Wagner	See also 19-185022	HP02 (Single family property)	1994 (F. Smith, L. Zier, Myra L. Frank & Associates)
				P-19-150060	House for Miss L D Wagner	See also 19-185024	HP02 (Single family property)	1994 (F. Smith, L. Zier, Myra L. Frank & Associates)
				P-19-150061	Charles S Conner House	See also 19-185023	HP02 (Single family property)	1994 (F. Smith, L. Zier, Myra L. Frank & Associates)
				P-19-150062	Cottage for G Sutter & William C Burns	See also 19-185021	HP02 (Single family property)	1994 (F. Smith, L. Zier, Myra L. Frank & Associates)
				P-19-150063	Lemuel Raymond Freer House	See also 19-185018	HP02 (Single family property)	1994 (F. Smith, L. Zier, Myra L Frank & Associates)
				P-19-150064	State Street Historic District	Is a district with element 19-150065; Is a district with element 19-150066; Is a district with element 19-150067; Is a district with element 19-150068; Is a district with element 19-150069; Is a district with element 19-150070; See also 19-185127	HP02 (Single family property); HP39 (Other)	1994 (Diane Kane, Caltrans)
				P-19-150065	Dr Francis Rowland House	Is an element of district 19-150064; See also 19-185000; See also 19-185066	HP02 (Single family property)	1994 (D. Kane, Caltrans)
				P-19-150066	Armstrong House	Is an element of district 19-150064; See also 19-180402; See also 19-185067	HP02 (Single family property)	1994 (D. Kane, Caltrans)

P-19-150070	Hartshorn Houses	Is an element of district 19-150064; See also 19-180403; See also 19-180404; See also 19-185064; See also 19-185065	HP03 (Multiple family property)	1994 (D. Kane, Caltrans)
P-19-150073	Willard L Hartshorn House	See also 19-180381; See also 19-185063	HP02 (Single family property)	1994 (D. Kane, Caltrans)
P-19-150074	House for John Erickson	See also 19-185014	HP02 (Single family property)	1994 (F. Smith, L. Zier, Myra L. Farnk & Associates)
P-19-150075	Stimson Historic District	Is a district with element 19-150076; Is a district with element 19-150077; Is a district with element 19-150078; Is a district with element 19-150079; Is a district with element 19-150080; Is a district with element 19-150082; Is a district with element	HP02 (Single family property); HP39 (Other)	1994 (D. Kane, Caltrans)
P-19-150076	A G Simonds House	Is an element of district 19-150075; See also 19-185015	HP02 (Single family property)	1994 (D. Kane, Caltrans)
P-19-150077	Henry M Thompson House	Is an element of district 19-150075; See also 19-185047	HP02 (Single family property)	1993 (D. Kane, Caltrans)
P-19-150078	Stone/Brooks House	Is an element of district 19-150075; See also 19-179611	HP02 (Single family property)	1993 (A. Scheid, Caltrans)
P-19-150079	Henry Stephen Boice House	Is an element of district 19-150075; See also 19-179612	HP02 (Single family property)	1993 (A. Scheid, Caltrans)
P-19-150080	Frank P O'Connor House	Is an element of district 19-150075; See also 19-179613	HP02 (Single family property)	1994 (A. Scheid, Caltrans)
P-19-150081	J W Meehan House	See also 19-150075; See also 19-185034	HP02 (Single family property)	1994 (D. Kane, Caltrans)
P-19-150082	Rose Werner House	Is an element of district 19-150075; See also 19-180398	HP02 (Single family property)	1994 (D. Kane, Caltrans)
P-19-150083	Dr W D Dilworth House	Is an element of district 19-150075; Physically overlaps or intersects 19-180397	HP02 (Single family property)	1994 (D. Kane, Caltrans)
P-19-150084	Mrs J S Torrance House	See also 19-150075; See also 19-185016	HP02 (Single family property)	1994 (D. Kane, Caltrans)
P-19-150085	Mary Werner House	Is an element of district 19-150075; See also 19-180396	HP02 (Single family property)	1994 (D. Kane, Caltrans)
P-19-150086	M E Turner House	Is an element of district 19-150075; See also 19-185013	HP02 (Single family property)	1994 (D. Kane, Caltrans)
P-19-150089	Mrs M Werner House	See also 19-150075; See also 19-185031	HP02 (Single family property)	1994 (D. Kane, Caltrans)
P-19-150090	M J Quimby House	Is an element of district 19-150075; Physically overlaps or intersects 19-185032	HP02 (Single family property)	1994 (D. Kane, Caltrans)
P-19-150091	C B & W Rowley House	Is an element of district 19-150075; See also 19-185033	HP02 (Single family property)	1994 (D. Kane, Caltrans)
P-19-150095	House for Rider H Myers	See also 19-185050	HP02 (Single family property)	1994 (F. Smith, L. Zier, Myra L Frank & Associates)
P-19-150096	E H Rose House	See also 19-185051	HP02 (Single family property)	1994 (D. Kane, Caltrans)
P-19-150111	Henrietta Hough House	See also 19-185062	HP02 (Single family property)	1994 (F. Smith, L. Zier, Myra L Frank & Associates)
P-19-150112	House for Mrs Wilbur E Cook	See also 19-185012	HP02 (Single family property)	1994 (F. Smith, L. Zier, Myra L Frank & Associates)
P-19-150113	House for R Sturges Cook		HP02 (Single family property)	1994 (F. Smith, L. Zier, Myra L Frank & Associates)
P-19-150114	Sarah S Guest House	See also 19-185009	HP02 (Single family property)	1994 (D. Kane, Caltrans)
P-19-150115	J W Jones & M W Weir House	See also 19-185007	HP02 (Single family property)	1994 (D. Kane, Caltrans)

P-19-150116	E L Erdman House	See also 19-185005	HP02 (Single family property)	1994 (D. Kane, Caltrans)
P-19-150117	A G Vedder House	See also 19-184994	HP02 (Single family property)	1994 (D. Kane, Caltrans)
P-19-150118	W W Phelps House	See also 19-184993	HP02 (Single family property)	1994 (D. Kane, Caltrans)
P-19-150119	W E Musgrave House	See also 19-184992	HP02 (Single family property)	1994 (D. Kane, Caltrans)
P-19-150120	L H Tolhurst	See also 19-184991	HP02 (Single family property)	1994 (D. Kane, Caltrans)
P-19-150121	Nero & H D Packard House	See also 19-184990	HP02 (Single family property)	1994 (D. Kane, Caltrans)
P-19-150122	Avoca Avenue Historic District	Is a district with element 19-150123; Is a district with element 19-150124; Is a district with element 19-150125; Is a district with element 19-150126; Is a district with element 19-150127; Is a district with element 19-150128	HP02 (Single family property); HP39 (Other)	1994 (D. Kane, Caltrans)
P-19-150128	The Sophia Durant/Roland Sisson House	Is an element of district 19-150122; See also 19-185045	HP02 (Single family property)	1994 (D. Kane, Caltrans)
P-19-150129	Victoria Thompson House	See also 19-185055	HP02 (Single family property)	1994 (D. Kane, Caltrans)
P-19-150133	F J Kennett	See also 19-180407	HP02 (Single family property)	1994 (D. Kane, Caltrans)
P-19-150134	J Durand Kennett	See also 19-180406	HP02 (Single family property)	1994 (D. Kane, Caltrans)
P-19-150135	Edward Krug House	See also 19-185037	HP02 (Single family property)	1994 (D. Kane, Caltrans)
P-19-150138	Anna M Taylor House	See also 19-185057	HP02 (Single family property)	1994 (D. Kane, Caltrans)
P-19-150139	Hurlbut St Fire Station #5	See also 19-185059	HP02 (Single family property)	1994 (D. Kane, Caltrans)
P-19-150140	Albert Zimmerman House	See also 19-184982	HP02 (Single family property)	1994 (D. Kane, Caltrans)
P-19-150141	JS Mason	See also 19-184981	HP02 (Single family property)	1994 (D. Kane, Caltrans)
P-19-150142	Varick D Martin House	See also 19-184980	HP02 (Single family property)	1994 (D. Kane, Caltrans)
P-19-150143	Rev Hiram Hill/ Alonzo Beal House	See also 19-180388	HP02 (Single family property)	1994 (D. Kane, Caltrans)
P-19-155933	Romero-Glass House		HP02 (Single family property)	1994 (Carson Anderson, Greenwood & Associates)
P-19-155935	Hoagland House		HP02 (Single family property)	1994 (Carson Anderson, Greenwood & Associates)
P-19-155936	Armstrong House		HP02 (Single family property)	1994 (Carson Anderson, Greenwood & Associates)
P-19-155937	Packard House		HP02 (Single family property)	1994 (Carson Anderson, Greenwood & Associates)
P-19-155938	Christianer House		HP02 (Single family property)	1994 (Carson Anderson, Greenwood & Associates)
P-19-155939	Ralph Price House		HP02 (Single family property)	1994 (Carson Anderson, Greenwood & Associates)
P-19-155940	Charles Price House		HP03 (Multiple family property)	1994 (Carson Anderson, Greenwood & Associates)
P-19-175731	Eleanor Dicey House		HP02 (Single family property)	1994 (Carson Anderson, Greenwood & Associates)
P-19-175734	Mary Dicey House		HP02 (Single family property)	1994 (Carson Anderson, Greenwood & Associates)



P-19-175736	Pickering House		HP02 (Single family property)	1994 (Carson Anderson, Greenwood & Associates)
P-19-176524	Golden Gate Theater		HP10 (Theater)	1979 (GLEA Cultural Heritage Survey, TELACU/CRG); 1980 (GELA Cultural Heritage Survey, TELACU/CRG); 1994 (Starzak, Myra L Franck & Associates)
P-19-179476	Raymond Hill Waiting Station		HP02 (Single family property)	1977 (T Sitton, Natural History Museum)
P-19-179483	Howard Longley House	Is an element of district 19-179484	HP02 (Single family property)	1973 (M L Fey, South Pasadena Cultural Heritage Commission)
P-19-179484	Buean Vista District	Is a district with element 19-179479; Is a district with element 19-179480; Is a district with element 19-179481; Is a district with element 19-179482; Is a district with element 19-179483	HP02 (Single family property); HP39 (Other)	
P-19-179486	Oaklawn Bridge & Waiting Station	Is an element of district 19-179499	HP04 (Ancillary building); HP19 (Bridge)	1972 (M L Fey, South Pasadena Cultural Heritage Commission); 2000 (Daniel Abeyta, OHP); 2001 (Dan Peterson, Avila Tom Architects); 2001 (Glen Duncan, S. Pasadena Cultural Heritage Commission)
P-19-179499	Oaklawn District	Is a district with element 19-179485; Is a district with element 19-179486; Is a district with element 19-179487; Is a district with element 19-179488; Is a district with element 19-179489; Is a district with element 19-179490; Is a district with element	HP02 (Single family property); HP39 (Other)	1976 (L Webb, CA Department of Transportation)
P-19-179502	Alexander Block	Is an element of district 19-179518	HP06 (1-3 story commercial building)	1977 (T Sitton, Natural History Museum)
P-19-179503	Graham Block	Is an element of district 19-179518	HP06 (1-3 story commercial building)	1977 (T Sitton, Natural History Museum)
P-19-179505	Shapiro Block	Is an element of district 19-179518	HP06 (1-3 story commercial building)	1977 (T Sitton, Natural History Museum)
P-19-179506	Edwards & Faw Block	Is an element of district 19-179518	HP06 (1-3 story commercial building)	1977 (T Sitton, Natural History Museum)
P-19-179509	Herlihy Block	Is an element of district 19-179518	HP06 (1-3 story commercial building)	1977 (T Sitton, Natural History Museum)
P-19-179518	South Pasadena Historic District	Is a district with element 19-179502; Is a district with element 19-179503; Is a district with element 19-179504; Is a district with element 19-179505; Is a district with element 19-179506; Is a district with element 19-179508; Is a district with element	HP02 (Single family property); HP39 (Other)	1976 (L Webb, CA Department of Transportation); 1977 (T Sitton, Natural History Museum)
P-19-179521	Rialto Theater		HP10 (Theater)	1977 (R Hatheway, Natural History Museum); 1977 (R Shryock)
P-19-179522	War Memorial Bldg		HP06 (1-3 story commercial building)	1977 (T Sitton, Natural History Museum)
P-19-179523	South Pasadena High School Administration Bldg		HP15 (Educational building)	1977 (T Sitton, Natural History Museum)
P-19-179530	Kenneth W Joy House		HP02 (Single family property)	1982 (J Snyder, DOTP Caltrans)
P-19-179561	North of Mission District	Is a district with element 19-179532; Is a district with element 19-179533; Is a district with element 19-179534; Is a district with element 19-179535; Is a district with element 19-179536; Is a district with element 19-179537; Is a district with element	HP02 (Single family property); HP39 (Other)	1982 (J Snyder, DOTP Caltrans)
P-19-179610	South of Mission District	Is a district with element 19-179562; Is a district with element 19-179563; Is a district with element 19-179564; Is a district with element 19-179565; Is a district with element 19-179566; Is a district with element 19-179567; Is a district with element	HP02 (Single family property); HP39 (Other)	1982 (J Snyder, DOTP Caltrans)
P-19-179614	J G Pierce House		HP02 (Single family property)	1982 (J Snyder, DOTP Caltrans)
P-19-179617	Wynate		HP02 (Single family property)	1973 (Margaret Leslie Fay, S. Pasadena Cultural Heritage Commission)
P-19-179645	Arroyo Seco Parkway	Is a district with element 19-179619; Is a district with element 19-179620; Is a district with element 19-179621; Is a district with element 19-179622; Is a district with element 19-179623; Is a district with element 19-179624; Is a district with element	HP37 (Highway/trail)	1982 (Snyder, John W., Cal Trans); 2003 (David Greenwood, Myra L. Frank & Assoc.); 2008 (Janice Calpo, Cal Trans)
P-19-179994	Camphor Tree	Is an element of district 19-184771	HP30 (Trees/vegetation)	1979 (Ann Scheid, Cultural Heritage Program)

P-19-180049	Colonial Court	Is an element of district 19-190680	HP03 (Multiple family property); HP30 (Trees/vegetation)	1979 (A. Scheid, B. Drachlis)
P-19-180097	Meeker House		HP02 (Single family property)	
P-19-180098	Jane E Meeker House		HP02 (Single family property)	
P-19-180119	396 N Summit		HP02 (Single family property)	1993 (C. McAvoy, HRG)
P-19-180130	397 N Summit		HP02 (Single family property)	1993 (C. McAvoy, HRG)
P-19-180142	First Advent Christian Church		HP16 (Religious building)	1993 (C. McAvoy, HRG)
P-19-180207	453 Cypress		HP02 (Single family property)	1993 (C. McAvoy, HRG)
P-19-180221	John S Hartwell House		HP02 (Single family property)	1993 (C. McAvoy, HRG)
P-19-180268	206 W California Blvd	Is an element of district 19-180320	HP03 (Multiple family property)	2002 (P. Moruzzi, HRC)
P-19-180320	Markham Place Historic District	Is a district with element 19-180254; Is a district with element 19-180255; Is a district with element 19-180256; Is a district with element 19-180257; Is a district with element 19-180258; Is a district with element 19-180259; Is a district with element	HP01 (Unknown)	2013
P-19-180321	Neighborhood House	Is an element of district 19-180326	HP15 (Educational building); HP16 (Religious building)	1989 (C. Anderson, Urban Conservation)
P-19-180326	Sequoyah School Complex	Is a district with element 19-180321; Is a district with element 19-180322; Is a district with element 19-180323; Is a district with element 19-180324; Is a district with element 19-180325	HP15 (Educational building); HP16 (Religious building); HP29 (Landscape architecture)	1976 (L. Webb, California Department of Transportation); 2010 (Kelly Ewing-Toledo, Caltrans)
P-19-180418	Throop Memorial Universalist Church		HP13 (Community center/social hall); HP15 (Educational building); HP16 (Religious building)	1979 (E. Pomeroy, Cultural Heritage Program)
P-19-180637	Cascades Park & Jardin Del Encanto		HP14 (Government building); HP29 (Landscape architecture)	1998 (L. Bow, City of Monterey Park)
P-19-180733	Howard Motor Co	Is an element of district 19-183128; See also 19-183136	HP06 (1-3 story commercial building)	1995 (B. Goeken, City of Pasadena, Planning and Permitting Committee); 2000 (Teresa Grimes)
P-19-180736	Kindel Bldg	Is an element of district 19-183128; See also 19-183134	HP06 (1-3 story commercial building)	1995 (B. Goeken, City of Pasadena, Planning and Permitting Department); 2000 (Teresa Grimes)
P-19-180759	Bullock's Pasadena	See also 19-182293	HP06 (1-3 story commercial building)	1996 (A. Hess, Pasadena Heritage)
P-19-181879	McKinley Junior High School / Rose City High School		HP15 (Educational building)	1999 (Teresa Grimes, Leslie Heumann, PCR); 2011 (Jeanette A. McKenna, McKenna)
P-19-183125	Memorial Flagstaff		HP26 (Monument/mural/gravestone)	1991 (J. Correia)
P-19-183126	Pasadena Art Museum		HP15 (Educational building)	1987 (N. Impastato, Urban Conservation)
P-19-183128	Automobile Showroom Thematic Grouping	Is a district with element 19-180733; Is a district with element 19-180736; Is a district with element 19-183129; Is a district with element 19-183130; Is a district with element 19-183131; Is a district with element 19-183132; Is a district with element	HP06 (1-3 story commercial building)	1987 (N. Impastato, Urban Conservation)
P-19-183129	Lindley Motor Co	Is an element of district 19-183128	HP06 (1-3 story commercial building)	
P-19-183130	Keller Brothers	Is an element of district 19-183128	HP06 (1-3 story commercial building)	
P-19-183131	Hewson Motor Co	Is an element of district 19-183128	HP06 (1-3 story commercial building)	
P-19-183132	Walter M Murphy Co	Is an element of district 19-183128	HP06 (1-3 story commercial building)	
P-19-183137	H G Loud Autos	Is an element of district 19-183128	HP06 (1-3 story commercial building)	2000 (Teresa Grimes)
P-19-183139	Lieberg Bldg		HP06 (1-3 story commercial building)	1987 (N. Impastato, Urban Conservation)
P-19-183140	Hotel Constance		HP05 (Hotel/motel)	1987 (N. Impastato, Urban Conservation)
P-19-183410	Union Garage Co	Is an element of district 19-184771	HP06 (1-3 story commercial building)	1989 (J. Draeger & C. Anderson, Urban Conservation)
P-19-183411	330 S Fair Oaks Ave		HP06 (1-3 story commercial building)	1989 (J. Draeger & C. Anderson, Urban Conservation)
P-19-183412	Vitalait Laboratories		HP06 (1-3 story commercial building)	1989 (J. Draeger & C. Anderson, Urban Conservation)
P-19-183413	445 S Fair Oaks Ave		HP06 (1-3 story commercial building)	1989 (J. Draeger & C. Anderson, Urban Conservation)
P-19-183414	Pasadena Transfer & Storage		HP06 (1-3 story commercial building)	1989 (J. Draeger & C. Anderson, Urban Conservation)
P-19-183415	488-490 S Fair Oaks Ave		HP06 (1-3 story commercial building)	1989 (J. Draeger & C. Anderson, Urban Conservation)

P-19-183416	Pasadena Awning & Linoleum		HP06 (1-3 story commercial building)	1989 (J. Dareger & C. Anderson, Urban Conservation)
P-19-183417	Pasadena Biscuit Co		HP06 (1-3 story commercial building)	1989 (J. Drager & C. Anderson, Urban Conservation)
P-19-183418	Nishi Auto Parts		HP06 (1-3 story commercial building)	1989 (J. Drager & C. Anderson, Urban Conservation)
P-19-183419	Sugano Grocery Store		HP06 (1-3 story commercial building)	1989 (J. Draeger & C. Anderson, Urban Conservation)
P-19-183421	542-544 S Fair Oaks Ave		HP02 (Single family property)	1989 (J. Draeger & C. Anderson, Urban Conservation)
P-19-183423	Sanders House of Lights		HP06 (1-3 story commercial building)	1989 (J. Drager & C. Anderson, Urban Conservation)
P-19-183424	1 W California Blvd		HP06 (1-3 story commercial building)	1989 (C. Anderson, Urban Conservation)
P-19-184234				
P-19-184416	Ramond - Summit Historic District		HP02 (Single family property); HP39 (Other)	
P-19-184417			HP02 (Single family property)	1993 (C. McAvoy, HRG)
P-19-184423			HP02 (Single family property)	1993 (C. McAvoy, HRG)
P-19-184718	Sanitary Family Laundry		HP06 (1-3 story commercial building)	1990 (D. Richey, Urban Conservation)
P-19-184719	Fair Oaks Auto Body/Doggone Grooming		HP06 (1-3 story commercial building)	1990 (D. Richey, Urban Conservation Dept.); 2003 (David Greenwood, Myra L. Frank & Associates)
P-19-184720	Pacific Electric Railway Co, Substation #2		HP06 (1-3 story commercial building)	1990 (D. Richey, Urban Conservation)
P-19-184721	Crown City Orthopedic		HP06 (1-3 story commercial building)	1990 (D. Richey, Urban Conservation)
P-19-184722	Precision Components		HP06 (1-3 story commercial building)	1990 (D. Richey, Urban Conservation)
P-19-184723	Gerlach's Drive-In Liquor		HP06 (1-3 story commercial building)	1990 (D. Richey, Urban Conservation Dept); 2003 (David Greenwood, Myra L. Frank & Assoc.)
P-19-184771	Old Pasadena Historic District	Is a district with element 19-179848; Is a district with element 19-179849; Is a district with element 19-179850; Is a district with element 19-179851; Is a district with element 19-179852; Is a district with element 19-179853; Is a district with element	HP02 (Single family property); HP39 (Other)	1983 (Pasadena Heritage)
P-19-184977	Bekins Storage Co Roof Sign		HP06 (1-3 story commercial building)	2004 (J. Michalsky)
P-19-184979	Pasadena Ave District		HP02 (Single family property); HP39 (Other)	1983 (S. Mikesell); 1994 (Diane Kane, Caltrans)
P-19-186112	Union Pacific RR, Southern Pacific R R Los Angeles Division	Physically overlaps or intersects 19-188480; See also 19-004202	AH07 (Roads/trails/railroad grades); HP11 (Engineering structure); HP39 (Other) - railroad grade	1999 (S. Ashkar, Jones & Stokes); 2002 (Rand F. Herbert, JPR Historical Consulting Services); 2009 (R. Ramirez and F. Smith, SWCA Environmental Consultants); 2009 (F. Smith and J. Steely, SWCA Environmental Consultants)
P-19-187014	C F Braun Co			1999 (L. Heumann, PCR)
P-19-187085	The Mojave Rd		HP37 (Highway/trail)	1989 (S. Elder)
P-19-188193	Food To Go		HP06 (1-3 story commercial building)	2004 (C. Taniguchi, MBA)
P-19-188194			HP06 (1-3 story commercial building); HP08 (Industrial building)	2004 (C. Taniguchi, MBA)

P-19-188719	Pasadena Light & Power Dispatching Center		HP11 (Engineering structure)	1996 (Lauren Weiss Bricker); 2003 (David Greenwood, Myra L. Frank & Assoc.)
P-19-188766	Glenarm Power Plant	See also 19-176197	HP08 (Industrial building); HP09 (Public utility building)	1995 (Christy J. McAvoy, Historic Resources Group); 2003 (David Greenwood, Myra L. Frank & Associates, Inc.)
P-19-188767	Broadway Steam Plant		HP11 (Engineering structure)	1996 (Lauren Weise Bricker); 2003 (David Greenwood, Myra L. Frank & Associates)
P-19-189222	Church of Scientology		HP06 (1-3 story commercial building)	2000 (Teresa Grimes)
P-19-189428	San Gabriel Valley Bldg		HP06 (1-3 story commercial building)	2008 (Dana E Supernowicz, Historic Resource Associates)
P-19-189957	Stein Rooftop		HP06 (1-3 story commercial building)	2011 (K.A. Crawford, Crawford Historic Services)
P-19-189997	Bristol--Cypress Historic District		HP02 (Single family property); HP39 (Other)	
P-19-190332	Gossett Residence		HP02 (Single family property)	2013 (Carrie Chasteen, Parsons)
P-19-190502	SCE Mesa-Anita-Eaton 66kV Transmission Line		HP11 (Engineering structure)	2010 (Wendy L. Tinsley Becker, Urbana Preservation & Planning)
P-19-190632	Medical Offices		HP07 (3+ story commercial building)	2013 (K.A. Crawford, Michael Brandman Associates)

Type of Forms	Reports	Maps	Address	NR status	APE(s)
Caltrans Architectural Inventory form	LA-03440, LA-12060, LA-12221	LOS ANGELES	909 Lyndon Ave South Pasadena 91030 (APN 5314-023-007)	Eligible/3S?	LRT
Caltrans Architectural Inventory form	LA-03440, LA-12060, LA-12221	LOS ANGELES	857 Bank St South Pasadena 91030 (APN 5314-017-001)	Eligible/3S?	LRT
Caltrans Architectural Inventory form	LA-03440	PASADENA	261 Wigmore Dr Pasadena (APN 5719-007-007)	Not Eligible/6Z?	LRT
Caltrans Architectural Inventory form	LA-03440	PASADENA	245 Wigmore Dr Pasadena (APN CT#49584-001)	Not Eligible/6Z?	LRT
Caltrans Architectural Inventory form	LA-03440	PASADENA	231 Wigmore Dr Pasadena (APN CT# 48212-001)	Not Eligible/6Z?	LRT
Caltrans Architectural Inventory form	LA-03440	PASADENA	215 Wigmore Dr Pasadena (APN CT# 48213-001)	Not Eligible/6Z?	LRT
Caltrans Architectural Inventory form	LA-03440	PASADENA	212 Wigmore Dr Pasadena (APN CT# 48211-001)	Not Eligible/6Z?	LRT
Caltrans Architectural Inventory form	LA-03440	PASADENA	230 Wigmore Dr Pasadena (APN CT#48210-001)	Not Eligible/6Z?	LRT
Caltrans Architectural Inventory form	LA-03440	PASADENA	250 Wigmore Dr Pasadena (APN CT# 480204-001)	Not Eligible/6Z?	LRT
Caltrans Architectural Inventory form	LA-03440	PASADENA	216 Arlington Dr Pasadena (APN CT# 48193-001)	Not Eligible/6Z?	LRT
Caltrans Architectural Inventory form	LA-03440	PASADENA	1041 S Pasadena Ave Pasadena (APN CT# 048191)	Eligible/3S?	LRT
Caltrans Architectural Inventory form	LA-03440	PASADENA	1051 S Pasadena Ave Pasadena (APN CT# 048190)	Eligible/3S?	LRT
Caltrans Architectural Inventory form	LA-03440	PASADENA	1059 S Pasadena Ave Pasadena (APN CT# 48189-001)	Not Eligible/6Z?	LRT
Caltrans Architectural Inventory form	LA-03440	PASADENA	205 Madeline Dr Pasadena (APN CT# 47445-001)	Not Eligible/6Z?	LRT
Caltrans Architectural Inventory form	LA-03440, LA-10186	PASADENA	215 Madeline Dr Pasadena (APN 5719-010-013)	Not Eligible/6Z?	LRT
Caltrans Architectural Inventory form	LA-03440	PASADENA	225 Madeline Dr Pasadena (APN CT# 48188-001)	Not Eligible/6Z?	LRT
Caltrans Architectural Inventory form	LA-03440	PASADENA	235 Madeline Dr Pasadena (APN 5719-010-010)	Not Eligible/6Z?	LRT
Caltrans Architectural Inventory form	LA-03440	PASADENA	230 Madeline Dr Pasadena (APN CT# 48084-001)	Not Eligible/6Z?	LRT
Caltrans Architectural Inventory form	LA-03440	PASADENA	218 Madeline Dr Pasadena (APN CT# 04573-001)	Not Eligible/6Z?	LRT
Caltrans Architectural Inventory form	LA-03440	PASADENA	202 Madeline Dr Pasadena (APN CT# 48185-001)	Not Eligible/6Z?	LRT
Caltrans Architectural Inventory form	LA-03440	PASADENA	200 Block State St Pasadena	Eligible/3?	LRT
Caltrans Architectural Inventory form	LA-03440	PASADENA	225 State St Pasadena (APN CT# 48181); 225 W State St Pasadena	Eligible/3B?	LRT
Caltrans Architectural Inventory form	LA-03440	PASADENA	237 State St Pasadena; 237 W State St Pasadena	Eligible/3B?	LRT

Caltrans Architectural Inventory form	LA-03440	PASADENA	224 State St Pasadena (APN CT# 041598-0001); 232 State St Pasadena (APN CT# 041598-0002); 224 and 232 W State St Pasadena	Eligible/3D?	LRT
Caltrans Architectural Inventory form	LA-03440	PASADENA	214 State St Pasadena (APN CT# 048161); 214 W State St Pasadena	Not Eligible/6Z?	LRT
Caltrans Architectural Inventory form	LA-03440	PASADENA	1191 S Pasadena Ave Pasadena (APN CT#44816-001)	Not Eligible/6Z?	LRT
Caltrans Architectural Inventory form	LA-03440	LOS ANGELES, PASADENA	Columbia St Pasadena; South Pasadena Ave Pasadena; Columbia Ave Pasadena; Avoca Ave Pasadena	Eligible/3?	LRT
Caltrans Architectural Inventory form	LA-03440	LOS ANGELES, PASADENA	1199 S Pasadena Ave Pasadena (APN CT# 48159)	Eligible/3D?	LRT
Caltrans Architectural Inventory form	LA-03440	LOS ANGELES	203 Columbia St Pasadena (APN 5317-004-011)	Eligible/3D?	LRT
Caltrans Architectural Inventory form	LA-03440	LOS ANGELES	1109 Coulmbia St South Pasadena (APN CT# 061338)	Eligible/3D?	LRT
Caltrans Architectural Inventory form	LA-03440	LOS ANGELES	1127 Columbis St South Pasadena (APN CT# 067902)	Eligible/3D?	LRT
Caltrans Architectural Inventory form	LA-03440	LOS ANGELES	1131 Columbia St South Pasadena (APN CT# 068598)	Eligible/3D?	LRT
Caltrans Architectural Inventory form	LA-03440	LOS ANGELES	181 Columbia St Pasadena (APN CT# 048163)	Not Eligible/6Z?	LRT
Caltrans Architectural Inventory form	LA-03440	LOS ANGELES	161 Columbia St Pasadena (APN CT#048164)	Eligible/3D?	LRT
Caltrans Architectural Inventory form	LA-03440	LOS ANGELES	1220 S Pasadena Ave Pasadena (APN CT#048165)	Eligible/3D?	LRT
Caltrans Architectural Inventory form	LA-03440	LOS ANGELES	1210 S Pasadena Ave Pasadena (APN CT#048167)	Not Eligible/6Z?	LRT
Caltrans Architectural Inventory form	LA-03440	PASADENA	1200 S Pasadena Ave Pasadena (APN CT#048168)	Eligible/3B?	LRT
Caltrans Architectural Inventory form	LA-03440	PASADENA	1190 S Pasadena Ave Pasadena (APN CT#047776)	Eligible/3D?	LRT
Caltrans Architectural Inventory form	LA-03440	LOS ANGELES	1211 Avoca Ave Pasadena (APN 5317-003-006)	Not Eligible/6Z?	LRT
Caltrans Architectural Inventory form	LA-03440	LOS ANGELES	1221& 1223 Avoca Ave Pasadena (APN 5317-003-005)	Eligible/3S?	LRT
Caltrans Architectural Inventory form	LA-03440	LOS ANGELES	145 Columbia St Pasadena (APN 5317-003-019)	Eligible/3D?	LRT
Caltrans Architectural Inventory form	LA-03440	LOS ANGELES	231 E Columbia St Pasadena (APN 5317-004-012)	Not Eligible/6Z?	LRT
Caltrans Architectural Inventory form	LA-03440	LOS ANGELES	233 Columbia St Pasadena (APN 5317-004-012)	Eligible/3S?	LRT
Caltrans Architectural Inventory form	LA-03440	PASADENA	160 State St Pasadena (APN CT# 48186-001)	Not Eligible/6Z?	LRT
Caltrans Architectural Inventory form	LA-03440	PASADENA	1180 S Pasadena Ave Pasadena (APN CT# 48169-001)	Not Eligible/6Z?	LRT
Caltrans Architectural Inventory form	LA-03440	PASADENA	1170 S Pasadena Ave Pasadena (APN CT#48170-001)	Not Eligible/6Z?	LRT
Caltrans Architectural Inventory form	LA-03440	PASADENA	1150 S Pasadena Ave Pasadena (APN CT#48171)	Not Eligible/6Z?	LRT
Caltrans Architectural Inventory form	LA-03440	PASADENA	1140 & 1142 S Pasadena Ave Pasadena (APN CT# 48172)	Not Eligible/6Z?	LRT

Caltrans Architectural Inventory form	LA-03440	PASADENA	1128 S Pasadena Ave Pasadena (APN CT# 48173)	Not Eligible/6Z?	LRT
Caltrans Architectural Inventory form	LA-03440	PASADENA	1120 S Pasadena Ave Pasadena (APN CT# 048174)	Not Eligible/6Z?	LRT
Caltrans Architectural Inventory form	LA-03440	PASADENA	1112 S Pasadena Ave Pasadena (APN CT#048175)	Eligible/3S?	LRT
Caltrans Architectural Inventory form	LA-03440	PASADENA	1100 Pasadena Ave Pasadena (APN CT#048176)	Not Eligible/6Z?	LRT
Caltrans Architectural Inventory form	LA-03440	PASADENA	1090 S Pasadena Ave Pasadena (APN CT#048177)	Not Eligible/6Z?	LRT
Caltrans Architectural Inventory form	LA-03440	PASADENA	1080 S Pasadena Ave Pasadena (APN CT#048178)	Not Eligible/6Z?	LRT
Caltrans Architectural Inventory form	LA-03440	PASADENA	1061-1135 Avoca Ave Pasadena	Eligible/3?	LRT
Caltrans Architectural Inventory form	LA-03440	PASADENA	1135 Avoca Ave Pasadena (APN 5719-012-019)	Eligible/3D?	LRT
Caltrans Architectural Inventory form	LA-03440	PASADENA	185 W Glenarm St Pasadena (APN CT# 048195)	Not Eligible/6Z?	LRT
Caltrans Architectural Inventory form	LA-03440	PASADENA	1030 S Pasadena Ave Pasadena (APN CT#048194)	Eligible/3B?	LRT
Caltrans Architectural Inventory form	LA-03440	PASADENA	1000 S Pasadena Ave Pasadena (APN CT#048198)	Eligible/3B?	LRT
Caltrans Architectural Inventory form	LA-03440	PASADENA	181 Arlington Dr Pasadena (APN CT# 048199)	Not Eligible/6Z?	LRT
Caltrans Architectural Inventory form	LA-03440	PASADENA	177 Hurlbut St Pasadena 91105	Not Eligible/6Z?	LRT
Caltrans Architectural Inventory form	LA-03440	PASADENA	900 S Pasadena Ave Pasadena 91105	Eligible/3B?	LRT
Caltrans Architectural Inventory form	LA-03440	PASADENA	888 S Pasadena Ave Pasadena 91105	Not Eligible/6Z?	LRT
Caltrans Architectural Inventory form	LA-03440	PASADENA	866 S Pasadena Ave. Pasadena 91105	Not Eligible/6Z?	LRT
Caltrans Architectural Inventory form	LA-03440	PASADENA	169 Arlington Dr Pasadena 91105	Not Eligible/6Z?	LRT
Caltrans Architectural Inventory form	LA-03440	PASADENA	169 Arlington Dr Pasadena 91105	Eligible/3B?	LRT
Caltrans Architectural Inventory form	LA-03440	LOS ANGELES	4531 Atlas St Los Angeles (APN 5309-021-001)	Not Eligible/6Z?	LRT
Caltrans Architectural Inventory form	LA-03440	LOS ANGELES	4517 Alpha St Los Angeles (APN 5309-021-004)	Not Eligible/6Z?	LRT
Caltrans Architectural Inventory form	LA-03440	LOS ANGELES	4511 Alpha St Los Angeles (APN 5309-021-005)	Not Eligible/6Z?	LRT
Caltrans Architectural Inventory form	LA-03440	LOS ANGELES	4507 Alpha St Los Angeles (APN C48143-001-05)	Not Eligible/6Z?	LRT
Caltrans Architectural Inventory form	LA-03440	LOS ANGELES	4423 Alpha St Los Angeles (APN 5309-021-014)	Not Eligible/6Z?	LRT
Caltrans Architectural Inventory form	LA-03440	LOS ANGELES	4417 Alpha St Los Angeles (APN C48134-001-01)	Not Eligible/6Z?	LRT
Caltrans Architectural Inventory form	LA-03440	LOS ANGELES	4411 Alpha St Los Angeles (APN C47417-003-04)	Not Eligible/6Z?	LRT
Caltrans Architectural Inventory form	LA-03440	LOS ANGELES	4431 Alpha St Los Angeles (APN 5309-021-012)	Not Eligible/6Z?	LRT
Caltrans Architectural Inventory form	LA-03440	LOS ANGELES	4437 Alpha St Los Angeles (APN 5309-021-011)	Not Eligible/6Z?	LRT

Caltrans Architectural Inventory form	LA-03440	LOS ANGELES	4451 Alpha St Los Angeles (APN C48141-001-10)	Not Eligible/6Z?	LRT
Historic Property file, NR nomination form, HRI form	LA-04448, LA-12021	LOS ANGELES	5170 E Whittier Blvd Los Angeles (APN 5245-001-019)	Listed	BRT
HRI form		LOS ANGELES	Fair Oaks Ave South Pasadena	Eligible/3?	BRT, LRT
NR listing announcement/form		LOS ANGELES	1005 Buena Vista St South Pasadena	Listed/3S	LRT
Caltrans request for NR eligibilty determination	LA-04451, LA-10866	LOS ANGELES	917-1005 Buena Vista St South Pasadena	Eligible/3?	LRT
NR nomination & registration form, SHPO correspondence	LA-11554	LOS ANGELES	Oaklawn Ave South Pasadena	Listed/2D2?	BRT, LRT, TSM
Caltrans request for NR eligibilty determination		LOS ANGELES	Oaklawn Ave South Pasadena	Eligible/3?	BRT, LRT, TSM
HRI form		LOS ANGELES	1001-1005 Mission St South Pasadena	Eligible/3	LRT
HRI form		LOS ANGELES	1011-1017 Mission St South Pasadena	Eligible/4CM	LRT
HRI form		LOS ANGELES	1002-1006 Mission St South Pasadena	Eligible/4CM	LRT
HRI form		LOS ANGELES	1008-1010 Mission St South Pasadena	Eligible/4CM	LRT
HRI form		LOS ANGELES	1024 Mission St South Pasadena	Not Eligible/5?	LRT
HBI, NR nomination forms, Caltrans request for NR eligibilty determination	LA-04451	LOS ANGELES	Mission St South Pasadena	Eligible/3?	LRT
HRI form, NR listing announcement/form		LOS ANGELES	1023 Fair Oaks Ave South Pasadena	Elgible/3S/3CS?	BRT, LRT, TSM
HRI form		LOS ANGELES	435 Fair Oaks Ave South Pasadena	Eligible/3	BRT
HRI form	LA-12221	LOS ANGELES	1327 Diamond Ave South Pasadena	Eligible/3	LRT
HRI form	LA-04451, LA-12060, LA-12221	LOS ANGELES	921 Monterey Rd South Pasadena (APN 5314-022-005)	Eligible/3S?	LRT
HRI form	LA-04451	LOS ANGELES	Meridian Ave, N of Mission District South Pasadena	Eligible/3	LRT
HRI form	LA-04451, LA-12060	LOS ANGELES	Meridian Ave, S of Mission District South Pasadena	Eligible/3	LRT
HRI form	LA-04451, LA-12060	LOS ANGELES	911 Monterey Rd South Pasadena	Eligible/3S?	LRT
NR nomination form, listing announcement, correspondence	LA-12060, LA-12221	LOS ANGELES	851 Lyndon St South Pasadena	Listed/3S?	LRT
Architectural evaluation, NR nomination, partial DPR form	LA-09489, LA-10576, LA-10866, LA-11404, LA-12526, VN-03153	LOS ANGELES, PASADENA	SR-110 Pasadena Freeway Pasadena; Arroyo Seco Parkway Pasadena	Eligible/?	BRT, LRT, TSM
HRI form		PASADENA	251 S Fair Oaks Ave Pasadena	Eligible/4	BRT

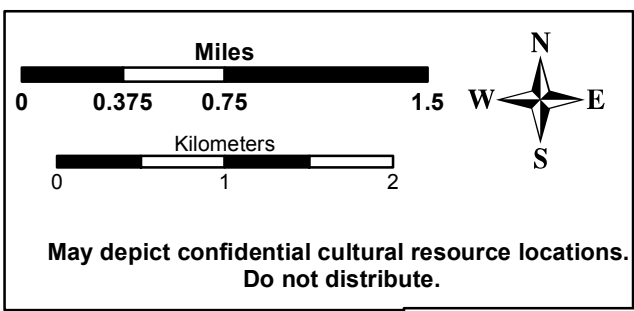


HRI form	LA-07459, LA-08817, LA-09681, LA-10711, LA-10846	PASADENA	291 N Garfield Ave Pasadena 91101	Listed?/3B?	LRT
HBI listing excerpt		PASADENA	397 N Raymond Pasadena	Not evaluated?	LRT
HBI listing excerpt		PASADENA	407-409 N Raymond Pasadena	Not evaluated?	LRT
HRI form		PASADENA	396 N Summit Pasadena (APN 5725-023-037)	Eligible/3D	LRT
HRI form		PASADENA	397 N Summit Pasadena (APN 5725-016-034)	Eligible/3D	LRT
Historic Property file, HRI form	LA-08817, LA-10846	PASADENA	394 N Marengo Ave Pasadena 91101 (APN 5725-027-033)	Eligible/3S	LRT
HRI form		PASADENA	453 Cypress Pasadena (APN 5726-012-049)	Eligible/3D	LRT
HRI form		PASADENA	423 Lincoln Ave Pasadena (APN 5726-012-017)	Eligible/3S?	LRT
Historic Property file, DPR form	LA-12511	PASADENA	206-216 W California Blvd Pasadena (APN 5719-004-000)	Eligible/3D/3S	LRT
NR listing announcement		PASADENA	276-366 Markham Pl Pasadena; 595-801 S Pasadena Ave Pasadena; 584-762 St John Ave Pasadena; 202-206 W California Blvd Pasadena; 235-345 Bellefontaine St Pasadena; 285-360 Congress Pl Pasadena	Listed/2D/various codes	LRT, TSM
Historic Property file, HRI form	LA-12511	PASADENA	535 S Pasadena Ave Pasadena	Not Eligible/5D2/7J	LRT
Caltrans request for NR eligibilty determination, Historic Property file, DPR form	LA-11801	PASADENA	535 S Pasadena Ave Pasadena	Eligible/4CM	LRT, TSM
Historic Property file, City architectural inventory form	LA-08817, LA-09163, LA-09681, LA-10846, LA-11958, LA-12196	PASADENA	300 S Los Robles Ave Pasadena 91101	Eligible/3S	BRT
DPR form, City correspondence	LA-04529, LA-08737	LOS ANGELES	700 El Mercado Public Right of Way Monterey Park 91754	Not evaluated	BRT
NR registration form	LA-10991, LA-12513	MT WILSON	1285 E Colorado Blvd Pasadena	Eligible/3S?	BRT
NR registration form	LA-10991	PASADENA	1095 E Colorado Blvd Pasadena	Eligible/3S?	BRT
NR registration form	LA-11420, LA-12196	PASADENA	401 S Lake Ave Pasadena	Eligible/3S?	BRT
HRI, DPR forms	LA-11420, LA-12196	PASADENA	325 S Oak Knoll Ave Pasadena	Eligible/3S	BRT
Historic Property file, cont. sheet		PASADENA	W Colorado Blvd Pasadena 91105	Eligible/3S	LRT
HRI form (incomplete)		PASADENA	411 W Colorado Blvd Pasadena	Not evaluated?/5	LRT
HRI form	LA-10991, LA-12347	MT WILSON, PASADENA	Colorado Blvd Pasadena	Eligible/3D	BRT, LRT
HRI form cont. sheet?		PASADENA	335-37 W Colorado Blvd Pasadena	Eligible/3D	LRT
HRI form cont. sheet?		PASADENA	325 W Colorado Blvd Pasadena	Eligible/3D	LRT
HRI form cont. sheet?		PASADENA	297 W Colorado Blvd Pasadena	Eligible/3D	LRT
HRI form cont. sheet?		PASADENA	275-85 W Colorado Blvd Pasadena	Eligible/3D	LRT
HRI form cont. sheet?	LA-12347	MT WILSON	1355 E Colorado Blvd Pasadena	Eligible/3D	BRT
HRI form		PASADENA	919-11 E Colorado Blvd Pasadena	Not Eligible/5	BRT
HRI form		PASADENA	940 E Colorado Blvd Pasadena	Not Eligible/6	BRT
HRI form		PASADENA	300 S Fair Oaks Ave Pasadena	Not Eligible/6	BRT
HRI form		PASADENA	330 S Fair Oaks Ave Pasadena	Not Eligible/6	BRT
HRI form		PASADENA	333-335 S Fair Oaks Ave Pasadena	Eligible/4S2	BRT
HRI form		PASADENA	445 S Fair Oaks Ave Pasadena	Not Eligible/6	BRT
HRI form		PASADENA	474-480 S Fair Oaks Ave Pasadena	Eligible/4S3	BRT
HRI form		PASADENA	488-490 S Fair Oaks Ave Pasadena	Not Eligible/6	BRT

HRI form		PASADENA	496 S Fair Oaks Ave Pasadena	Not Eligible/6	BRT
HRI form		PASADENA	511 S Fair Oaks Ave Pasadena	Not Eligible/5	BRT
HRI form		PASADENA	512-514 S Fair Oaks Ave Pasadena	Not Eligible/6	BRT
HRI form		PASADENA	527 S Fair Oaks Ave Pasadena	Not Eligible/6	BRT
HRI form		PASADENA	542-544 S Fair Oaks Ave Pasadena	Eligible/4S2	BRT
HRI form		PASADENA	574-76 S Fair Oaks Ave Pasadena	Not Eligible/6	BRT
HRI form		PASADENA	567-571 S Fair Oaks Ave Pasadena	Not Eligible/6	BRT
HRI form		PASADENA	409 N Fair Oaks Blvd Pasadena	Not Eligible/6Z?	LRT
NR listing announcement		PASADENA	N Raymond Ave, E Villa St, Summit Ave, & E Maple St Pasadena	Listed/1?	LRT
HRI form		PASADENA	396 N Raymond Pasadena (APN 5725-016-035)	Eligible/3D	LRT
HRI form	LA-08817, LA-10846	PASADENA	397 Townsend Pl Pasadena (APN 5725-023-037)	Eligible/3D	LRT
HRI form		PASADENA	860 S Fair Oaks Ave Pasadena	Eligible/4S3	BRT
HRI, DPR forms	LA-10576	PASADENA	1039-1055 S Fair Oaks Ave Pasadena (APN 5719-021-031)	Not Eligible/5S3	BRT
HRI form		PASADENA	1154 S Fair Oaks Ave Pasadena	Eligible/4S3	BRT, LRT
HRI form		PASADENA	1165-1169 S Fair Oaks Ave Pasadena	Eligible/4S2	BRT, LRT
HRI form		PASADENA	965 S Fair Oaks Pasadena	Not Eligible/6	BRT
HRI, DPR forms	LA-10576	PASADENA	1075 S Fair Oaks Pasadena (APN 5719-018-001)	Not Eligible/6	BRT
NR nomination form, listing announcement	LA-07459, LA-08817, LA-09681, LA-10590, LA-10846, LA-12511	PASADENA	Roughly bounded by, Fair Oaks, Raymond Aves, Arroyo Pkwy, Del Mar Blvd, & Corson St, Green St Pasadena	Listed/1?	BRT, LRT
NR registration form	LA-12511	PASADENA	511 S Fair Oaks Ave Pasadena	Listed/1?	BRT
Caltrans request for NR eligibility determination, Historic Property file	LA-03440, LA-10713	LOS ANGELES, PASADENA	S Pasadena Ave Pasadena 91109	Eligible/2S2/3S	BRT, LRT
DPR form and updates	LA-04835, LA-05125, LA-05501, LA-07528, LA-07834, LA-07943, LA-07954, LA-08231, LA-08249, LA-08298, LA-08299, LA-08517, LA-08635, LA-08667, LA-08671, LA-08701, LA-08703, LA-08733, LA-08744, LA-08821, LA-08822, LA-08826, LA-08827, LA-08911, LA-09156, LA-09	BALDWIN PARK, EL MONTE, LA HABRA, LOS ANGELES, ONTARIO, SAN DIMAS, YORBA LINDA	(APN 8760-005-800); (APN 8760-005-809); (APN 8760-005-810); (APN 8264-021-801)	Eligible segments/6	BRT, LRT, TSM
DPR form and updates	LA-07859, LA-12220	LOS ANGELES	1000 S Fremont Ave Alhambra (APN 5342-001-014)	Eligible/3S	LRT, TSM
Historical Lnadmark Application		BALDWIN PARK, EL MONTE, LONG BEACH, LOS ANGELES, ONTARIO, SAN DIMAS, SOUTH GATE		Not evaluated?	BRT, LRT
DPR form	LA-09313	LOS ANGELES	4374 Eagle Rock Blvd Los Angeles 90041 (APN 5474-021-008)	Not Eligible/6Y	TSM
DPR form	LA-09313	LOS ANGELES	4364-4372 Eagle Rock Blvd Los Angeles 90041 (APN 5474-021-009)	Not Eligible/6Y	TSM

DPR form	LA-10576, LA-11743	PASADENA	45 E Glenarm St Pasadena (APN 5720-006-901)	Not Eligible/5S3	LRT
DPR form and updates	LA-10576	PASADENA	72 E Glenarm St Pasadena (APN 5317-030-901)	Eligible/2S2	BRT, LRT
DPR form and updates	LA-10576	PASADENA	72 E Glenarm St Pasadena (APN 5317-030-902)	Not Eligible/5S3	TSM
DPR form	LA-10991, LA-12347	MT WILSON	1271 E Colorado Blvd Pasadena (APN 5738-021-010)	Not Eligible/6Z	BRT
DPR form	LA-11117, LA-12135	EL MONTE	2299-2311 Huntington Dr San Marino (APN 5331-028-029)	Not Eligible/6Y2	TSM
DPR form	LA-11650, LA-12384	LOS ANGELES	1959 W Huntington Dr Alhambra (APN 5321-038-019)	Not Eligible/6Z?	BRT, LRT
NR listing announcement	LA-12284	PASADENA	438-516 Cypress Ave Pasadena	Listed/1S/3S	LRT
DPR form	LA-12284	PASADENA	634 N Pasadena Ave Pasadena (APN 5711-015-039); (APN 5711-015-045)	Not Eligible/6Z	LRT
DPR form		EL MONTE, MT WILSON		Not Eligible/6Z	TSM
DPR form	LA-12423	LOS ANGELES	1499 Huntington Dr S Pasadena (APN 5319-009-036)	Not Eligible/6Z	BRT, LRT, TSM

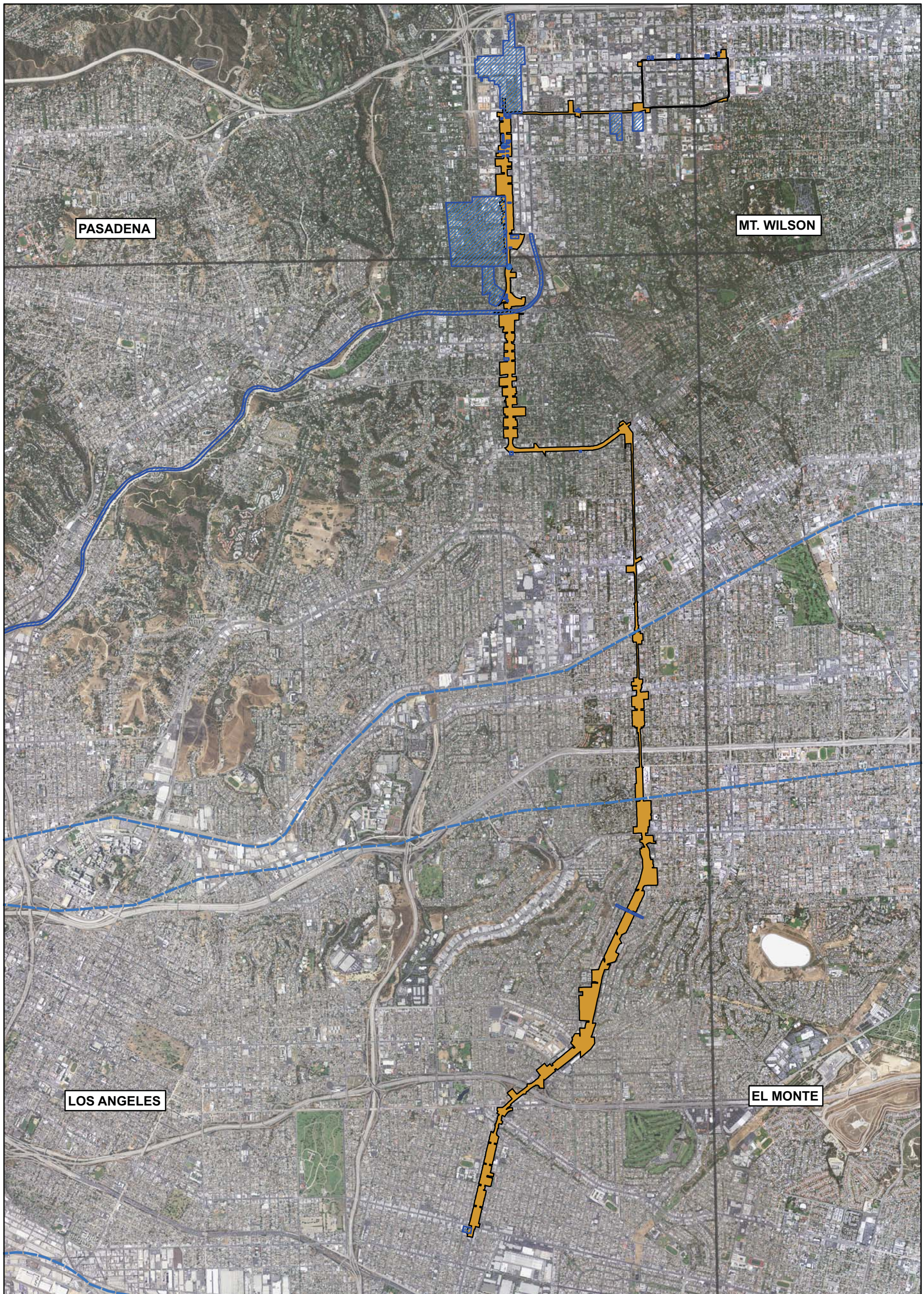




**131 Resources in APE.  
See Resources list and records.**

**F7\_LRT\_05212014  
PASADENA,  
MT. WILSON,  
LOS ANGELES,  
EL MONTE  
1:45,000**



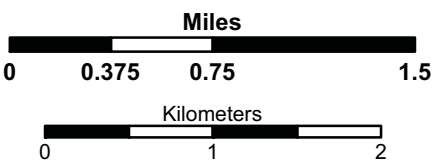


PASADENA

MT. WILSON

LOS ANGELES

EL MONTE

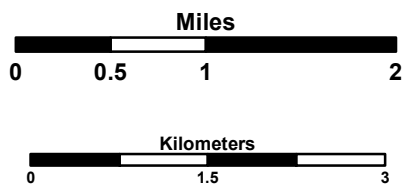
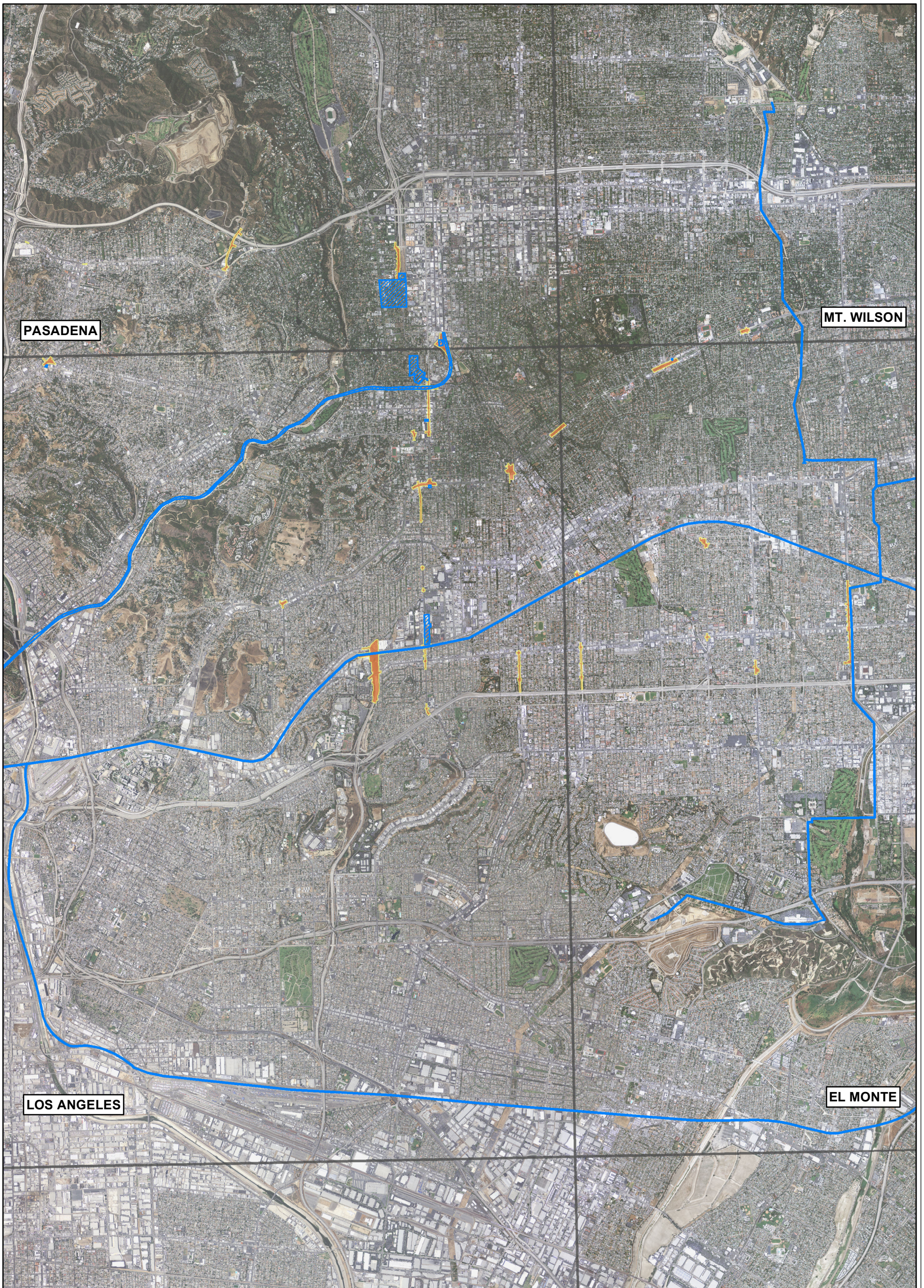


May depict confidential cultural resource locations.  
Do not distribute.

46 Resources: P-19-176524, P-19-179476, P-19-179486, P-19-179499, P-19-179521, P-19-179522, P-19-179645, P-19-179994, P-19-180418, P-19-180637, P-19-180733, P-19-180736, P-19-180759, P-19-181879, P-19-183128, P-19-183137, P-19-183139, P-19-183140, P-19-183410, P-19-183411, P-19-183412, P-19-183413, P-19-183414, P-19-183415, P-19-183416, P-19-183417, P-19-183418, P-19-183419, P-19-183421, P-19-183423, P-19-183424, P-19-184718, P-19-184719, P-19-184720, P-19-184721, P-19-184722, P-19-184723, P-19-184771, P-19-184977, P-19-184979, P-19-186112, P-19-187085, P-19-188766, P-19-189222, P-19-189957, P-19-190632

**BRT\_05212014**  
**PASADENA,**  
**MT. WILSON,**  
**LOS ANGELES,**  
**EL MONTE**  
**1:45,000**





May depict confidential cultural resource locations.  
Do not distribute.

14 Resources: P-19-179486, P-19-179499,  
P-19-179521, P-19-179645, P-19-180320,  
P-19-180326, P-19-186112, P-19-187014,  
P-19-188193, P-19-188194, P-19-188767,  
P-19-189428, P-19-190502, P-19-190632

**TSM\_TDM\_05202014**  
**PASADENA,**  
**MT. WILSON,**  
**LOS ANGELES,**  
**EL MONTE**  
**1:64,000**