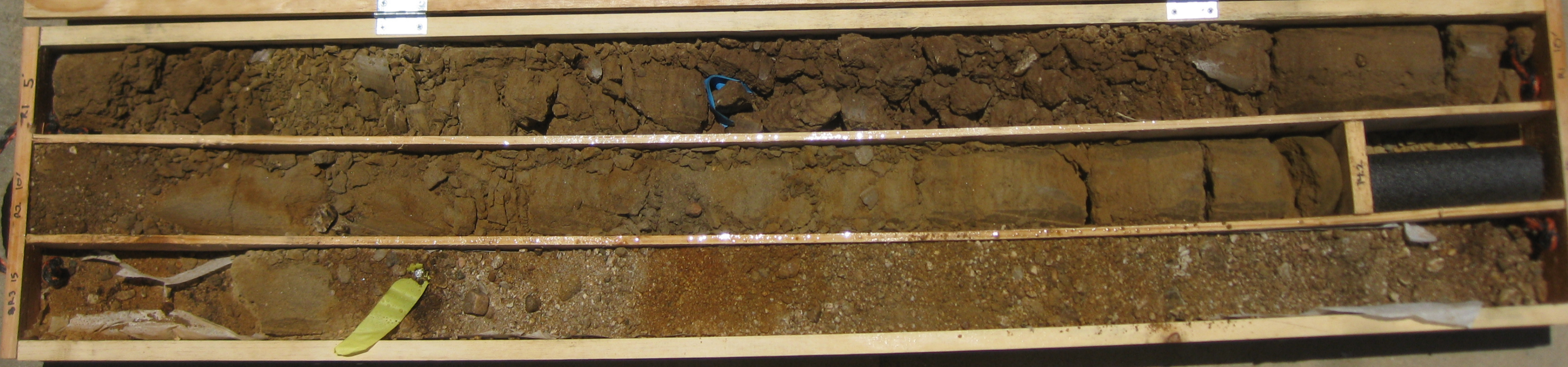


RUN	DEPTH	REC	ROE
1	5-10	100%	
2	10-15	~84%	
3	15-20	100%	

SR-710 North Study
A-13-017
5'-20'



RUN	DEPTH	REC
4	20-25	82%
5	25-30	86%
6	30-35	88%

SR-710 North Study
A-13-017
20-35



02 03
50 50
04 00

24.1

RUN	DEPTH	REC
7	35-40	80%
8	40-45	70%
9	45-50	90%

SR-710 North Study
 A-B-017
 35-50'



SR 710
 A-B-017
 35-50'

34.0'

43.5'

49.5'

RUN	DEPTH	REC
10	50-55	34%
11	55-60	82%
12	60-65	54%

SR-710 North Study
A-13-017
50'-65'



RUN	DEPTH	REC	
13	65-70	24%	65-66.2
14	70-75	40%	70-72.0
15	75-80	92%	75-79.6

SR-710 North Study
 A-13-017
 65-80'



RUN	DEPTH	REC	
16	80-85	86%	80-84.3
17	85- 89 90	44%	85-89.7
18	90-95	94%	90-94.7

SR-710 North Study
 A-13-017
 80' 95'

R16-80
 R17-85
 R18-90

84.3

89.7

94.7



RUN	DEPTH	REC
19	95-100	100%

SR-710 North Study
A-13-017
95- 100'

SR-710

