



Emblem

76-91

MAY, 1962



(Cover story, page 15)

- Division 2 (picture story)
- First Baseball Special Operator Tells Story
- Division 11 in Safety Lead at Halfway Point



DIVISION 2, as seen by camera pointed northeast from a point just south of the new Santa Monica Freeway and west of San Pedro St. The freeway at this point had not at the time been opened to traffic. Numbered buildings are: (1) transportation building; (2) service

KNOW YOUR MTA LOCATIONS

Tenth of a series

Division 2

A picture story, pp. 2-10

LOCATED in Los Angeles alongside the new Santa Monica Freeway, and entered on 15th St. at a point just east of San Pedro St., Division 2 is, for the most part, a typical MTA division.

It's typical in that, on the transportation side, the work of 289 Operators on some 17 local lines is handled by a Division Superintendent, J. M. McKevitt, with the help of an Assistant Division Superintendent, Kenneth E. Parker, a Stenographer, seven regular and three extra Clerks, and from two or three Instructors, depending on need.

It's typical in that, on the maintenance side, repair and utility crews under a Division Superintendent, Clarence J. Hatzler, keep up some 185 buses running approximately 550,000 miles a month.

But it's different from other divisions in that it's headquarters for:

1. The General Superintendent of Equipment, George H. Powell, and the Equipment Maintenance Department general offices and staff. As such, Division 2 is the nerve center of system maintenance operations.



station; (3) inspection and repair shop; (4) steam-cleaning and tire shop; (5) body shop. Upstairs in the east end of the repair shop building are the general offices of the Equipment Maintenance Department. East of the shops is a large section of storage yard.

2. Five Mail Carriers, who are assigned from Division 2 maintenance to MTA mail routes.

3. Maintenance, by Radio Technician D. J. Sullivan, under Division 2 jurisdiction, of all radio equipment.

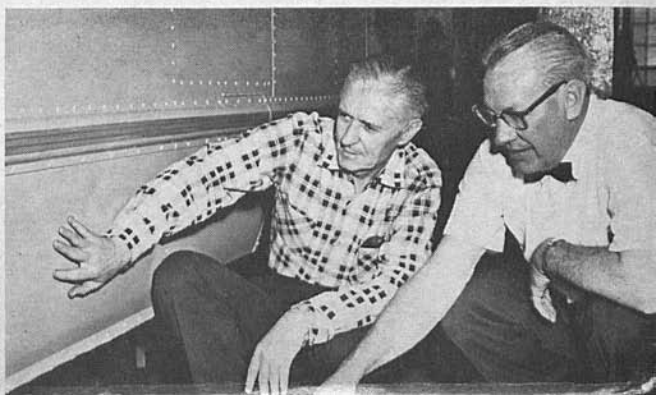
4. Maintenance of all (approximately 250) company cars, trucks, and miscellaneous motorized equipment used by all departments. Minor repairs for Way and Structures Department and Electrical Department equipment are made at Macy

Yard by Leadman Bob Falvey, two Mechanics, and a Utilityman under Division 2 jurisdiction. Also under Division 2 supervision is a parking garage on Main St. near the Transit Authority Building, for MTA automobiles. Henry J. Foote is the Utilityman assigned at this point.

For all the regular and special maintenance work, Division Superintendent Hatzler requires the services of a General Foreman (Jack Carmichael), three Foremen, and a

(Continued on Page 5)

DIVISION 2 SUPERINTENDENTS in one of their frequent conferences: left, Clarence J. Hatzler, maintenance; right, J. M. McKevitt, transportation.





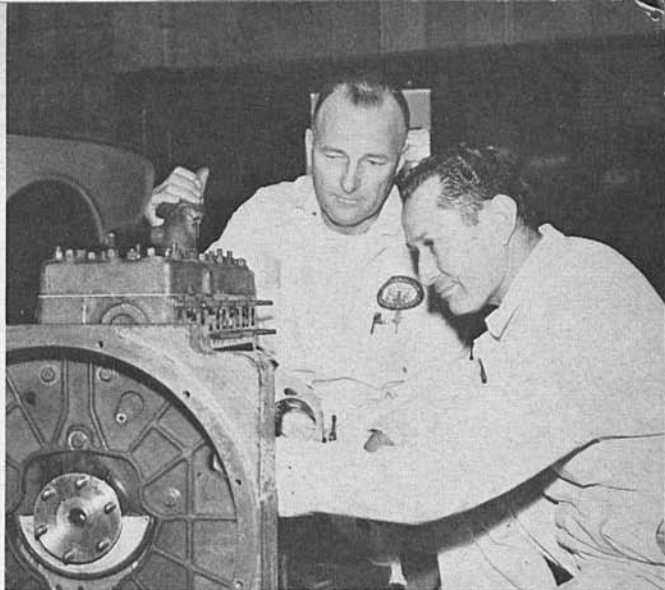
TOP MEN in Equipment Maintenance Department. Reading from right to left: George H. Powell, General Superintendent of Equipment; Fred Yenour, Assistant General Superintendent; Andrew W. Seyferth and George H. Wells, Assistants to General Superintendent; and Fred L. Bader, Chief Clerk. With the exception of Mr. Bader, who helps keep the office going, these men are constantly on the go from division to division coordinating work.

Division 2

GENERAL OFFICE, EQUIPMENT MAINTENANCE—Shelby T. Brown, Office Supervisor, standing at right, and his office force. Reading from front to back in the row of desks at left: General Clerks Mona Downs, Jeanne Dorrington, Ellen Headlund; at right: General Clerk Laura Hinze, Stenographer Evelyn Jones, General Clerk Marion Schneider. The office was recently remodeled and given air conditioning, new lighting fixtures, forced air heat, and a new lounge for the women. Remodeling of space adjacent to this office resulted in a suite of new offices now occupied by Messrs. Yenour, Seyferth, Wells, and Bader.



GENERAL FOREMAN Jack Carmichael, left, inspects work being done by Mechanic Herbert Alejandro on air compressor engine Bert is rebuilding.



Division 2

(Continued from Page 3)

force of more than 100, including Leadmen, Mechanics, Utilitymen, and Clerks.

One other respect in which Division 2 is different: It's one of three divisions (the others being 3 and 10) handling Baseball Specials.

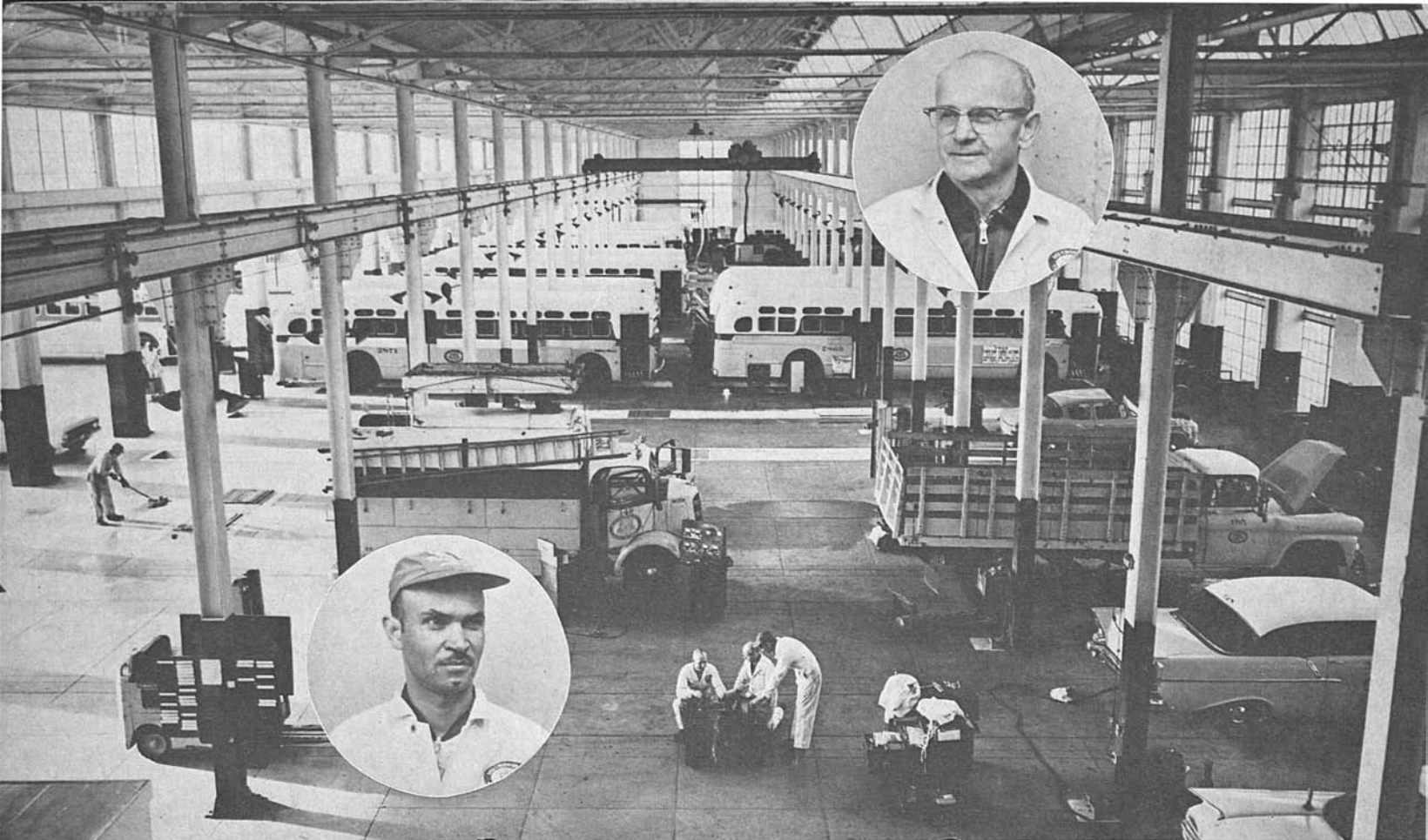
"For the good work of its em-

ployees, and for the fine spirit of cooperation existing there among both employees and departments, Division 2 is another of the 12 MTA divisions of which I am very proud," said Assistant General Manager M. Edwin Wright.

(More Pictures on Next Five Pages)

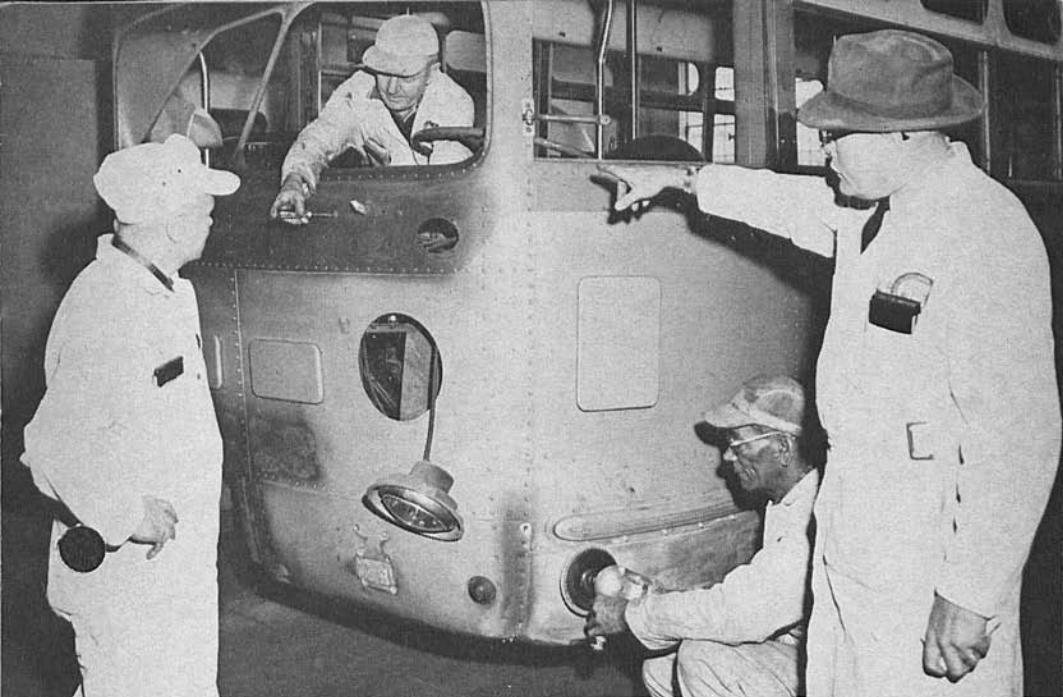
SHOP CLERKS Jim Upton, left, and Roland Johnson in their office. They keep track of the assignments and mileage of all MTA cars, trucks, and miscellaneous motorized equipment, as well as assignments and mileage of all Division 2 buses; and call equipment in for inspection and service when due, as determined by the records of accumulated mileage.





INSPECTION AND RUNNING REPAIRS SHOP for Division 2's 185 buses and for all (approximately 250) MTA automobiles, trucks,

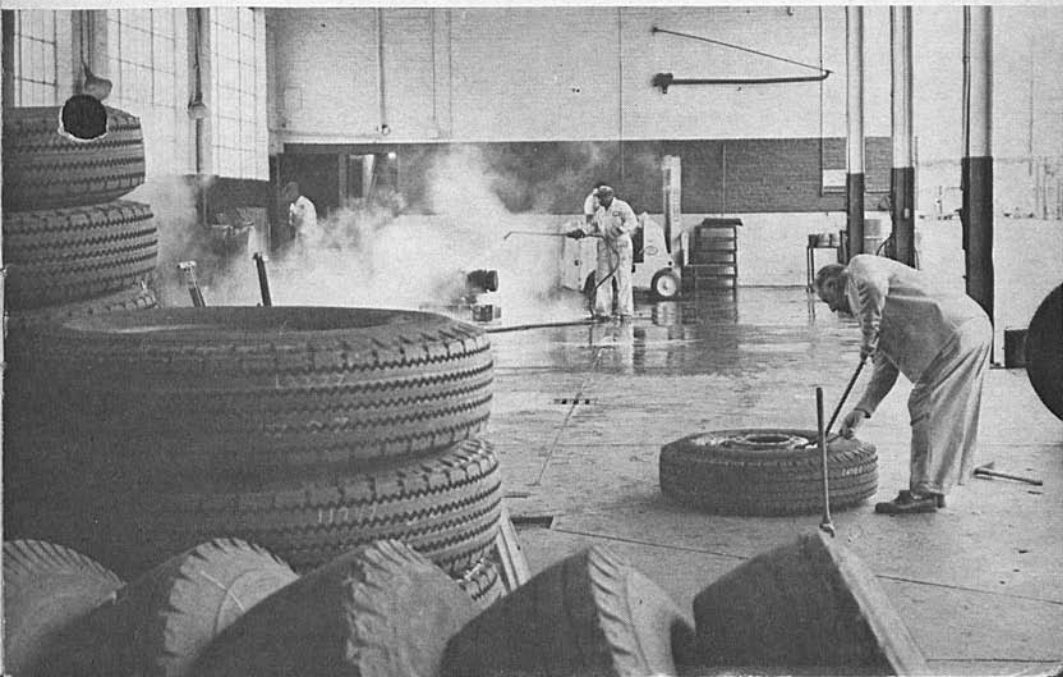
and miscellaneous equipment. Inset are Leadmen: at top, Hobart Robinson, for buses, days; below Jules Gauthier, for autos, trucks, etc.

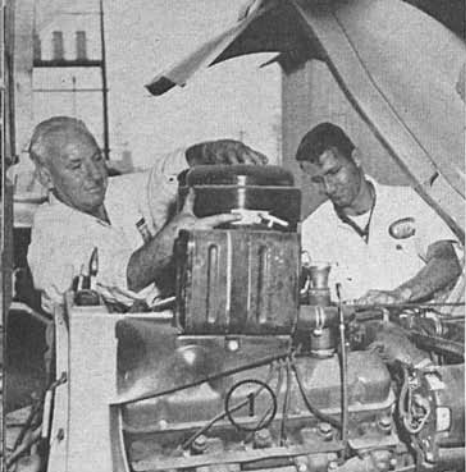


AT WORK IN THE BODY AND PAINT SHOP—Foreman Louis L. Myers, standing, right, assisted by Leadman William McCrae, standing, left, directs complete body overhaul of bus. Inside bus is Mechanic Carl Hoffman, Sanding panel is Mechanic Jim Williams.

Division 2

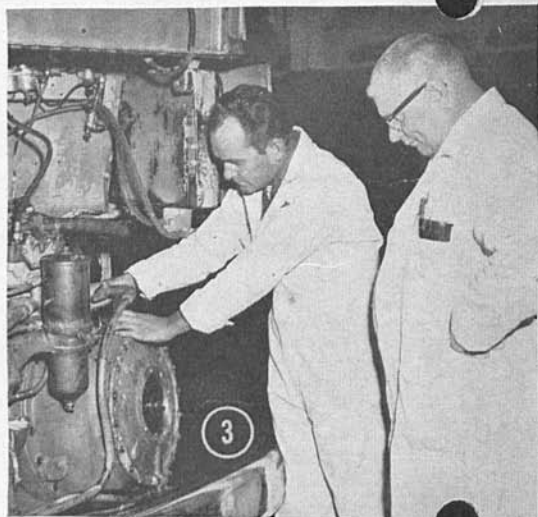
IN THE TIRE AND STEAM-CLEANING SHOP—Elmer ("Busch") Buschkowsky, works on tire, while, in background, Randolph Dickens, Utility "A," steam-cleans some bus parts.

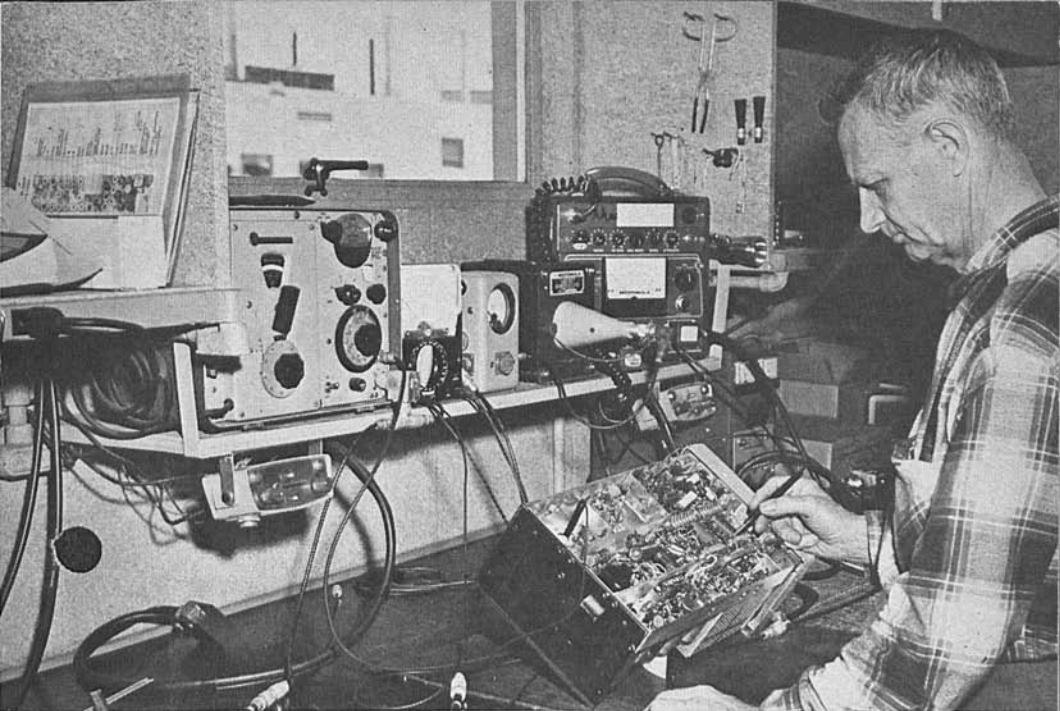




Division 2

(1) At Macy Yard, Mechanic "A" Carl McAlpine, left, and Leadman Bob Falvey make minor repairs on tilt-cab dump truck for Way and Structures. With one other Mechanic and a Utilityman, they are assigned from Division 2 to maintain some 75 units—trucks, tractors, cranes, motorcycles, weeders, compressors, pumps, sprayers, etc.—used by W&S and the Electrical Department. (2) Mel Taylor is one of five Mail Carriers under Division 2 maintenance supervision. (3) On second shift at Division 2, Foreman Lawrence Johnson, right, inspects the work of Leadman Bill Boyett, who is installing a transmission. (4) On third shift, Foreman Harry Hoegeman, right, inspects as Leadman Jack Walker completes bus tune-up. (5) Sylvester Hnorey, Utility Leadman on third shift, drives bus around to automatic washer.





RADIO SHOP, with Radio Technician D. J. Sullivan checking out a set. He maintains 86 two-way radios for Supervisors' cars, other cars, and trucks. He also maintains two dispatching transmitters, one with telephone link and one with microwave link to Dispatchers' control stations. He also keeps up these control stations, which are at Division 20.

Division 2

DIVISION 2 STORE, with Storekeeper Charles Whitehurst (inset), Shipping and Receiving Clerk Carroll Farris at desk, Junior Stock Clerk Harold Whitney at shelves, and Stock Clerk and Parts Pick-Up Driver Walter Fritzsche working at files (behind Mr. Farris). In addition to bus parts for the division, the store stocks a few automobile and truck parts and tires. Moreover, hand tools, shop tools, and other maintenance equipment for all divisions are sent in to the Division 2 Store for repair or replacement, under the direction of the Division 2 Superintendent, who consults with the General Superintendent on such matters.





OPERATORS' ROOM—A typical scene.

Division 2 — Transportation



DIVISION STENO Johnnie Miles helps Relief Assistant Superintendent Frank Matzner check the extra board list for the day. Kenneth E. Parker, regular assistant (inset) was acting in the stead of Division Superintendent J. M. McKeivitt at the time. The latter was away on vacation.

IN THE CLERKS' OFFICE—Clerks are A. W. Styffe, left, taking operator's turn-in, and George Marsala.



INSTRUCTION—Class listens to Instructor H. C. Rozendal, at blackboard, as he explains tariff, using a zone map. Also standing: Instructor Bill Packard, visiting from Division 3.



Baseball Special

Bobby Joe Tillman, First Operator to Bring Busload Of Fans Into Dodger Stadium, Tells First Day Impressions

BOBBY JOE TILLMAN, of Division 2, was the first Operator to pilot a Baseball Special loaded with fans into the parking lot at the new Dodger Stadium on the opening day, Apr. 10.

Although every effort had been made to foresee and solve problems in advance, there had been no previous experience at Dodger Stadium, and, according to Mr. Tillman, "we had to play it by ear." With him were Instructor J. P. Wood and Senior Transportation Engineer D. D. Canning, to act as troubleshooter.

"Lucky for me they were along," commented the Operator. "When we reached 8th and Spring, a full load of fans boarded. I had brought along \$13 in change, which lasted for just about the first 13 passengers. Instructor Wood helped by getting change out of the farebox



BOBBY JOE TILLMAN

and passing it to me so I could hand it out and get the people seated.

"It was easy to keep on the route to the Stadium. I had a map, and there was a Supervisor at almost every corner to help.

"Mr. Canning arranged with the parking attendants that each Operator coming in should merely sign parking tickets.

"A problem came up when I had to make an extra complete circle around the Stadium to get out because oncoming traffic prevented me from getting into the outbound lane.

"I made three trips in and two out, and I was also the first to take a load from the Stadium."

"Most problems have been solved since the first day," said Mr. Canning later. "But it would help prevent confusion if Operators would

(Continued on Page 12)

Commendations

116 Operators Honored In April for Courtesy

CONGRATULATIONS to the following 116 Operators who received commendations during the month of April:

W. A. Altemeir, Division 3; H. E. Anderson, 5; Albert Armelin, 5; Roscoe Baker, 2; H. M. Baldrige, 20; Duane Berry, 7; N. B. Brooks, 7; A. R. Brown, 7; C. T. Burris, 7; C. L. Cabrera, 1; W. C. Calhoun, 2; R. A. Coble, 2; J. H. Cockburn, 11; J. D. Coleman, 8; D. A. Coltz, 20; C. F. Conrad, 11; B. F. Cooper, 1.

F. E. Dahlstrom, 3; H. E. Daniels, 20; Herbert Darlington, 3; G. W. Demarest, 6; B. D. Dickerson, 1; E. F. Dietz, 10; J. A. Donovan, 5; A. P. Drazin, 11; J. D. Dufort, 6; J. F. Edmondson, 9; J. H. Edwards, 20; D. W. Eley, 6; O. N. Ellies, 1; M. H. Epperson, 7; E. A. Evans, 7; Leo Fanchin, 7; S. P. Forrester, 6; Harold Foster, 9; John Franks, Jr., 7.

T. J. Galloway, 5; A. J. Geis, 5; Del Gould, 6; D. C. Grayson, 12; W. J. Green, 9; W. R. Hardie, 6; C. C. Harris, 2; L. G. Herman, 11; George Herrera, 7; Ezra Hill, 7; C. F. Hinricksen, 20; B. R. Hobbs, 12; W. K. Holsberry, 12; D. W. Houghtaling, 5; J. W. Howard, 9; B. P. Holliday, 5; C. L. Hurst, 7; J. R. Jenkins, 5; H. M. Jones, 7; W. B. Jones, 5.

Ray Kornell, 20; Odd Kristofferson, 5; V. L. La France, 10; Oscar Langdale, 12; T. P. Lee, 7; F. V. Lemaster, 6; G. H. LeMaster, 2; N. T. Lewis, 7; R. D. Martin, 5; Wendell Merritt, 7; M. A. Michael, 8; Irving Modell, 8; H. A. Naughton, 8; J. A. Owens, 3; S. O. Parker, 2; R. A. Perry, 5; A. R. Peterson, 3; E. A. Pietropaolo, 6; S. J. Pollock, 9; V. D. Powell, 7.

Alfred Rappaport, 3; AunFrance Reed, Jr., 7; M. D. Rogers, 20; R. C. Rutherford, 5; W. D. Saffell, 10; J. D. Savill, 8; Leonard Sellick, 5; J. B. Sholander, 5; W. P. Shumake, 5; Adolphus Sills, 5; W. R. Small, 9; R. E. Smith, 7; L. T. Staten, 10; R. W. Steedman, 5; A. E. Stowe, 8; F. M. Strong, 7; U. T. Strong, 7; Earl Sullivan, 5; Stanley Swanson, 7.

C. R. Taliaferro, 9; F. W. Taylor, 9; F. V. Thomas, 10; J. C. Thompson, 20; A. E. Tooley, 7; C. H. Trautman, 5; J. E. Trower, 7; D. S. Varela, 9; G. F. Vogel, 2; J. A. Warren, 8; B. F. Williams, 7; L. E. Williams, 7; H. L. Woodford, 11; M. R. Wright, 5; R. D. Yahne, 10.

Glottone Wins Courtesy Award for Second Time

FOR THE SECOND TIME in less than four years, his courtesy toward his passengers, combined with his excellent operating record, won for Carl G. Glottone, of Division 2, the title of Operator of the Month. The first title was for June, 1958; the second, for April, 1962.



Carl G. Glottone

A passenger who had traveled on Mr. Glottone's Maywood-Bell Line 77 schedules for over four years wrote MTA a letter commending the Operator as "outstanding," because, she said,

"I have never seen him become abusive or raise his voice to anyone. Every question is answered in a decisive tone, and quiet, but answered to completion, so a person can understand the directions asked for . . . He has the patience of a saint, waiting for the oldsters to climb aboard . . ." etc.

Employed by MTA since 1946, Mr. Glottone wears a pin for 12 years of safe operation.

Baseball Special

(Continued from Page 11)

announce, as they reach the first unloading point in the Stadium: 'Holders of general admission tickets should alight here'; at the second stop: 'Holders of even-numbered reserved seat tickets and bleacher tickets should alight here'; at the third stop: 'Holders of odd-numbered reserved seat tickets and bleacher tickets should alight here.'"

Division Superintendents Temporarily Reassigned

TEMPORARY CHANGES effective May 9 in transportation division superintendencies were necessitated by the illness of Division 8 Superintendent Earl Jardell and the illness—and planned June 1 retirement—of Division 1 Superintendent D. B. Kohl.

Pending Mr. Jardell's recovery, Thomas Arnott, Superintendent at 11, has gone to 8. Division 3 Assistant Superintendent K. E. Funk is Acting Superintendent at 11.

C. A. Schulz, Superintendent at 6, has transferred to 1. Division 5 Assistant Superintendent V. A. Wetmore is Acting Superintendent at 6.



EAGLE SCOUT AWARD, highest in Scouting, was presented to Dennis Kissick, center, 13-year-old son of Mr. and Mrs. R. K. Kissick (also in photo), at a recent ceremony in Long Beach, where Dennis's father, Secretary to MTA's General Manager, is Scoutmaster of Dennis's troop, No. 34. Dennis followed tradition: his elder brother, Jerry, and Dad won their Eagle awards in 1958.

Division 11 Leads in Impruv-Ur-Record Contest

AT THE HALFWAY POINT in the current Impruv-Ur-Record contest (January, February, and March), Division 11, with a total of 1020 points, is in first place. Division 20, with 755 points, is second.

For the month of March, Division 11 also took first place. Division 10 came in second.

For February, Division 20 was in first place and Division 6 in second place.

NEW SANTA ANA STATION at W. 2nd and N. Sycamore Sts., with (photo at left) Dale Williams, Commission Agent, left, and T. N. Bristow, MTA Supervisor of Stations and Agencies. With an open house, refreshments, and a ribbon cutting attended by civic leaders of Santa Ana, officials of Greyhound and MTA, and the general public, a grand opening was held last April 6. Buses of both Greyhound and MTA will use the depot.



New Faces

A HEARTY WELCOME to the following new employees, who joined MTA between Mar. 19 and Apr. 16:

OFFICE OF CHIEF ENGINEER

Secretary I: Dorothy Mitchel.

PURCHASING AND STORES DEPARTMENT

Junior Stock Clerk: M. A. Mueler.

REAL PROPERTY MANAGEMENT

Information Clerk: Beatrice Bell, Shirley A. Carbine, Rose A. Holland.
Janitor: J.L. Green.

On Their Way Up

CONGRATULATIONS to the following employees, who took a step up the ladder in recent weeks:

M. H. Harris from Mechanic "B" to Mechanic "A," South Park, Mar. 25. Employed Jan. 11, 1954.

A. J. Mayes from Mechanic "C" to Mechanic "B," Division 2, Apr. 8. Employed Sept. 16, 1960.

Flora V. Shelton from Assistant Insurance Clerk to Pension and Insurance Clerk, Personnel Department, Mar. 21. Employed July 28, 1960.

Milton Spencer from Mechanic "B" to Mechanic "A" Leadman, Division 7, Feb. 25. Employed Oct. 29, 1945. (His appointment was inadvertently omitted in an earlier issue.)

Masao Tengan from Mechanic "B" to Mechanic "A," Division 1, Mar. 25. Employed Jan. 6, 1959.

Retirements

BEST WISHES to the following employees who have recently retired:

James B. Dunn, Operator, Division 9, who retired Apr. 1 after more than 33 years of service. He had been on indefinite leave since July, 1961.

Thomas W. Higgin, Mechanic "A," South Park Shops, who retired Mar. 30 after more than 42 years of service.

Paul E. Holmes, Operator, Division 7, who retired Mar. 20 after 23 years of service.

Matthew Laakson, Mechanic "A," South Park Shops, who retired Apr. 5 after more than 39 years of service. He had been on indefinite leave since August, 1961.

Jack H. Stanford, Operator, Division 11, who retired Apr. 10 after more than 39 years of service. He had been on indefinite leave since July, 1961.

In Memoriam

THE EMBLEM reports with regret the death of the following:

Murrie W. Cook, 65, retired Supervisor, Transportation Department; Mar. 28; service from 1926 to 1951. Survived by his wife, Hazel, of Redondo Beach.

Mary Kacy, 69, retired Cleaner, Division 11; Apr. 4; service from 1943 to 1960. Survived by her children, Ralph E. Kacy, of San Fernando; Homer S.

Kacy, of La Puente; and Mrs. Helen Martin, of Lombard, Ill.

David L. Laird, 65, Flagman; Apr. 16; service from 1926. Survived by his wife, Mildred, of Inglewood.

Chester L. Underhill, 57, Operator, Division 20; Apr. 15; service from 1945. Survived by his wife, Pauline, of Norwalk.

E. Pearl Wheeler, wife of retired Operator Chester A. Wheeler; Mar. 30. Survived by her husband, of Temple City.

**It's Top Hat and Tails
For FashionLiner Drivers**

RESPLENDENT in top hat and tails, Operator Louis S. Warner, of Division 8, bows low as Verna Felton, honorary Mayor of North Hollywood and TV star, steps off his "FashionLiner."

The occasion was an April 27 preview of MTA service to a new shopping center, Fashion Square, located on Riverside Dr. between Woodman and Hazeltine Aves., Sherman Oaks. The grand opening of Bullock's was slated for Monday, Apr. 30.

Mr. Warner was one of two Van Nuys Operators—the other being Mel Van Veen—who, attired in formal garb for the occasion, brought civic leaders from San Fernando Valley points to the new bus stop in front of Fashion Square. Guests were welcomed here by MTA Board member Martin Pollard and Walter W. Candy, Jr., President of Bullock's.

In our cover picture, the men in line at left are, from left, C. W. Tracy, President, Studio City Merchants Association; William Wesley, Vice-President, Studio City Chamber of Commerce; and Jack T. Elliott, President, North Hollywood Chamber of Commerce.

**ACME Funds Totaling \$8,350
Sent to Five Charities**

CONTRIBUTIONS totaling \$8,350 have been sent by the ACME Committee on behalf of ACME members to five major charitable organizations thus far in 1962:

The American National Red Cross, \$3,000.

The American Cancer Society, \$2,000.

The Los Angeles County Heart Association, \$2,000.

IN THIS ISSUE

Division 2 in Pix..... 2
 Headquarters for Equipment
 Maintenance Department;
 Center for Automobile,
 Truck, and Radio Upkeep;
 Handles Baseball Specials

**First Baseball Special
 Operator Tells His Story**.....11

Commendations12

News in Brief.....13

New Faces.....14

On Their Way Up.....14

Retirements14

In Memoriam.....14

Published monthly by:
 Los Angeles
 Metropolitan Transit Authority
 1060 S. Broadway
 Los Angeles 15, California
 EDMUND G. BROWN
 Governor of California

MEMBERS OF THE AUTHORITY

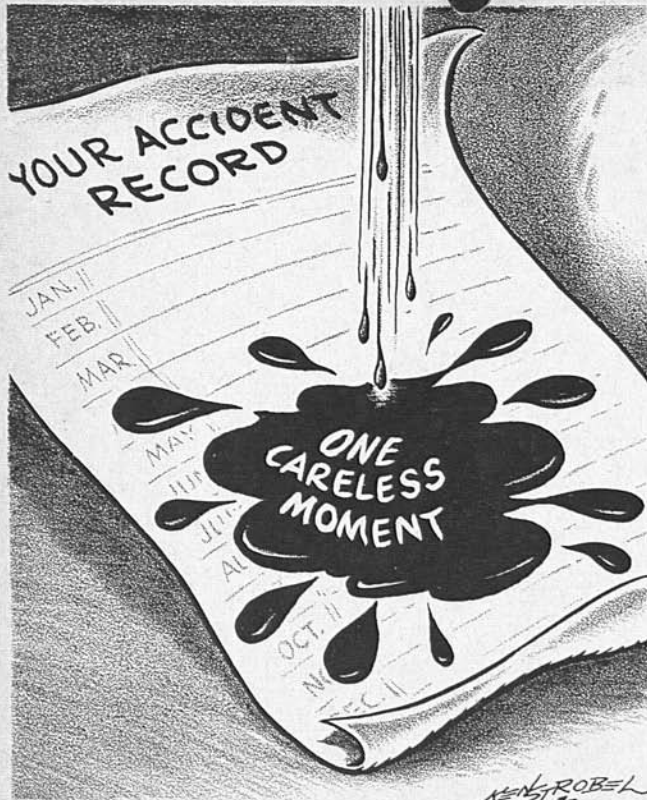
- A. J. EYRAUD
Chairman
- FRED S. DEAN
Vice-Chairman
- WALTER M. BRIGGS
- N. R. DUMONT
- MORTIMER W. HALL
- CARL P. MILLER
- MARTIN POLLARD
- * * *
- C. M. GILLISS
Executive Director

W. Warren Silliman, Editor

The March of Dimes, \$1,200.
 The Arthritis and Rheumatism
 Foundation, \$150.

All gifts were for the year 1962. Acknowledgments in appreciation have been received from the Red Cross, the Cancer Society, and the Arthritis and Rheumatism Foundation.

These contributions were made possible by employees participating in ACME.—Have you signed your pledge?



Spoiled!

THE MTA EMBLEM
1060 S. Broadway
Los Angeles 15, Calif.

BULK RATE
U. S. POSTAGE
PAID
Los Angeles, Calif.
Permit No. 21231

(READERS—Please keep your department informed of any change in your address.)