



HEADWAY



Southern California Rapid Transit District

Volume 2 Number 3 May 9, 1975

Grid Buses Wearing New Signs

Buses operating in the Grid areas are sporting special signs identifying them as part of the RTD's two new grid systems.

The metal signs, attached to the front of the bus, will simply read "GRID" in stenciled letters and will be used when the buses operate on lines within the grid areas. The signs will remain in that position throughout the day, even though part of the line may operate outside the grid areas. When the buses are assigned to lines which are not part of the grid areas, the signs will be turned over to display the blank side. According to RTD's transportation department, the signs will remain on the buses to which they are mounted.

The signs used in the South Central Los Angeles Grid are yellow, with GRID stenciled in black letters. In the San Fernando Valley, the signs are white with GRID in red letters.

The purpose of the signs, according to Howard Beardsley, is to help the public identify those lines which operate in the true grid system in the South Central Los Angeles area. Beardsley explains that certain lines in the South Central grid areas run along streets which also serve non-grid lines.

In the Valley, buses will also bear Grid signs to inform Valley residents of the existence of a grid network of RTD bus service.

The following lines will display these special signs:

DIVISION ONE
Lines 2, 9 and 26

DIVISION TWO
Lines 7, 12, 18, 44 and 49

DIVISION THREE
Lines 7 and 75

DIVISION FOUR
Lines 54, 73, 84, 85, 352 and 354

DIVISION FIVE
Lines 9, 46 and 50

DIVISION SIX
Line 75

DIVISION SEVEN
Line 44

DIVISION EIGHT
Lines 35, 81, 86, 93, 151, 153, 156, 157 and 158

DIVISION TEN
Lines 26 and 50

DIVISION ELEVEN
Line 92

DIVISION FIFTEEN
Lines 24, 152, 154, 155, 159, 160, 161, 162, 163, 164, 165, 166, 167, 168 and 169

DIVISION EIGHTEEN
Lines 100, 115, 137, 351, 353, 355, 356, 357, 358, 359, 360, 361, 362, 363 and 364

Like Baseball?

SCHOOL INFORMATION PROGRAM

"Operation Teamwork" Begins



L.A. Rams members Phil Olsen, left, and Ken Geddes, right, are pictured with the fifth and sixth graders of Ambler Avenue Elementary School in Carson. "Operation Teamwork," RTD's school information program, was kicked off at the school on Tuesday, April 9. The youngsters were shown a special film about the RTD and then had a question and answer session with the athletes about football and the RTD.



Geddes, left and Olsen, right, get close-up view of an RTD bus engine.



James R. Shelter, glass cutter at South Park Shops, demonstrates his skill to Geddes and Olsen at their recent tour of RTD facilities.

"RTD Story" Will Go to L.A. Schools

A special school information program called "Operation Teamwork" is being implemented to take the RTD story to the classrooms of the schools throughout Los Angeles County.

According to Byron C. Cook, RTD president, "Operation Teamwork" was established to inform elementary school students about RTD and what it takes to run its 2200-bus fleet. "Through classroom encounters with these outstanding athletes, we hope to earn the youngsters' respect for our operation, and eventually help cut down acts of vandalism against our equipment as the children get older."

Featured in "Operation Teamwork" will be Phil Olsen, defensive end and Ken Geddes, defensive linebacker, for the Los Angeles Rams. The two football players were chosen because of their expressed interest in working with youth, especially from minority and disadvantaged groups. Geddes holds a degree in elementary education from the University of Nebraska, and is a graduate of Father Flannigan's Boys-town in Nebraska. Olsen graduated from the Utah State University and has worked extensively with youth groups on a volunteer basis.

Commenting on the choice of football athletes, Cook noted that "The presence of Geddes at 6-3, 235, and Olsen at 6-5, 265, will immediately command the children's attention, and help create a receptive atmosphere for RTD's story."

Geddes says "Kids all over the country have great respect for football players in their hometown. By visiting with these students, we can not only inform them about L.A.'s pro-football scene, but also about the L.A. transit scene."

Olsen shares Geddes' enthusiasm for the program. "Both Ken and I really enjoy working closely with youngsters. This program will certainly open their eyes to RTD's operation, and at the same time, provide them with an awareness of the consequences of occasional acts of mischief."

Every year, graffiti and other acts of vandalism such as cutting seats and breaking windows, account for a large portion of RTD's operating budget. In the last fiscal year, vandalism related repairs cost nearly \$250,000.

The program's format will be aimed at the fifth and sixth grades in schools throughout L.A. County. Each school visit will consist of a 15-minute film showing RTD's operation, with the players illustrating the basic function performed by District personnel. Then Geddes and Olsen will make brief presentations of their own, and open up the session to questions.

To implement this program, the District is working closely with the office of Los Angeles Superintendent of Schools to compile a list of schools and classrooms in which to take the program.

RTD's Division Six: "Venice by the Sea"



A view of Division Six from Main St. in Venice.

This is the first of a series of articles profiling major RTD operating units. A major unit will be described in each forthcoming issue of *Headway* to inform readers of the interdependence among parts of RTD's total operation.

RTD's Division Six is the smallest and among the oldest of RTD divisions, dating back to the old Pacific Electric days. Division Six personnel agree, by and large, that it is a friendly division, with a relaxed atmosphere and "some of the best lines in the District."

Sometimes known as "Venice by the Sea," or "Ocean Park," the division is located at Sunset and Main in Venice, less than 400 yards from the ocean. Eight lines operate out of the division serving the western part of the Los Angeles Basin and the Santa Monica beach areas.

Buses running out of the division go as far north as Trancas in Malibu on the Pacific Coast Highway (Line 175), and as far south as Long Beach via Line 150. Line 128 is the freeway flyer to Marina Del Rey and Line 76 travels from Beverly Hills along Sunset Boulevard to Bel Air Estates and the Pacific Palisades area. Line 75 goes from Santa Monica to Ocean Park, Venice, Mar Vista and Culver City, while Line 13 serves the El Segundo-Culver City-L.A. route. Lines 83 and 4, two of the most heavily-used lines in the District, carry passengers into the downtown Los Angeles Central Business District.

Division Six houses 154 operators, four division dispatchers and a stenographer. A staff of 17 mechanics and utility men under Maintenance Division Manager Vernon Rose maintain a fleet of 93 buses. 85 regulars operate out of the division and there are 69 men on the extra board. Buses operate out of the division from 4:22 a.m. to 2:23 a.m. The division is manned 24 hours.

The size and the location of Division Six is one of its biggest advantages, according to the men who work there. For most of them—about 90 percent—it is near their home. Another fringe benefit to the workers is the division's nearness to the beach.

The man with the most seniority at Division Six is Gurson Levitt, who has been with RTD since 1942. According to Levitt, the division hasn't changed very much. "More people use the lines and a few more lines have been added," he says, "but we always had a nice bunch of guys here. It's very relaxed—one of the most relaxed divisions." James Stevens, another longtime

operator at Division Six, adds "It's still businesslike, but it is more of a family affair. We try to take care of each other, and all the drivers stick together."

Charles Curran, who has been at the division a year, says "It's a well-managed division. The supervisors are good, the clerks are swell people and we have great instructors. I think it's one of the better divisions as far as people and personnel go."

Wilfred D. Smith, in his second year at the Division, says he came to Division Six "because I heard it was a good place to work. All the men here are friends." Moses Lewis has been at Division Six for about a year, and plans to move into the area in order to live closer to the division. "I've made a lot of friends here, and because of that, I'd hate to leave the division."

Division Six's small size also has other advantages. P. O. Powers, chief instructor there, says that, because of its size, it's easier to get acquainted with everyone in the division.

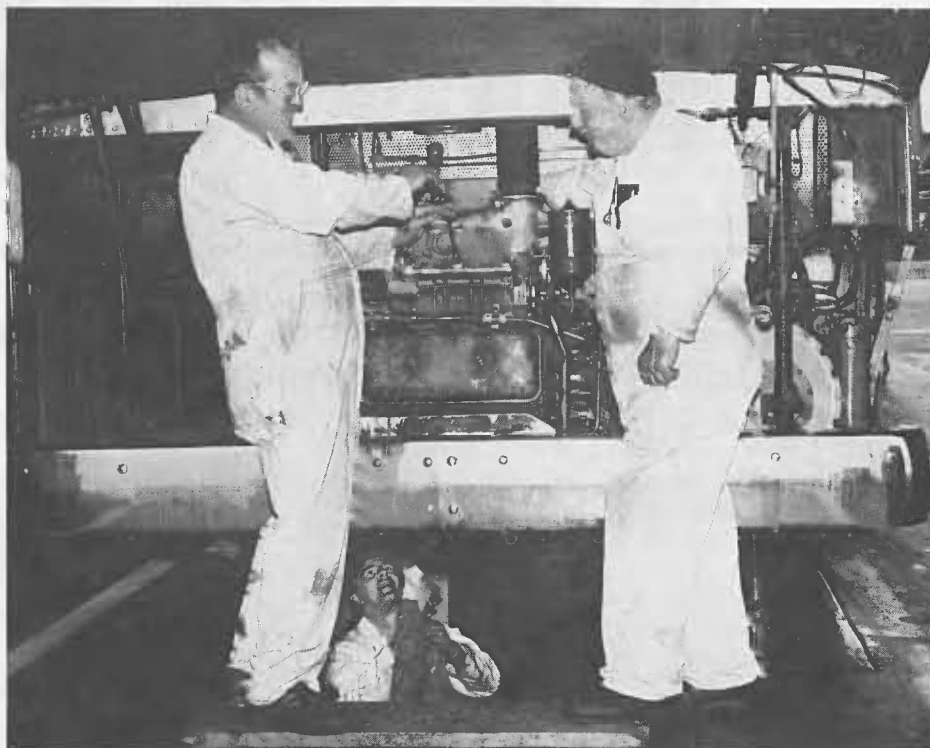
Eugene Schaeffer became manager of Division Six last November after serving as assistant manager. Schaeffer has been with RTD since 1954 and during that time served in every division in the District in several capacities, including division clerk and supervising service director. Schaeffer says that Division Six is "ideal" from a manager's point of view.

"Because of the small size, a manager can achieve closer contact with the operators."

Part of the more relaxed atmosphere at Division Six is due to its closeness to the beach. During the summer, many of the operators go to the beach during their splits and some operators ride their bikes to work. Stenographer Patricia Keck, who has been at the division eight years, sums up the general feeling: "It's nice to have the ocean so close, and the weather is so nice here in the summer."

Another unique feature of Division Six is its pool table. The only RTD facility to have one, Division Six has made the table the central feature in the trainroom. Division Six operators bought it several years ago and maintain it themselves. Operator Al Gray, another longtime employee at Division Six, built the trainroom ping pong table.

Like all other RTD divisions, however, Division Six grew during past year. Since the flat fare subsidy went into effect last year, 20 new operators have been hired and just recently, 18 more men who had been at the Division were transferred to Valley divisions. There are also plans to upgrade the Division Six facilities—the present facility was built in 1951—and add several new buses.



One of Division Six's buses gets a routine inspection from Ted Hustava, left, and John Pantera, right. Hustava has been at the District 20 years, while Pantera is a 34-year veteran. Gary Larsen, down in the pit, is a newcomer to RTD and Division Six.



Division Six bus operator Donald Barnes gets ready for his run on Line 175. Barnes, shown with one of RTD's summer street fleet buses, has been at Division Six 3½ years.

Scheduling Move

The RTD schedule department was moved to the new Transit headquarters at 425 So. Main St. on April 14. Mail to the schedule department, however, should still be sent to RTD location 31 mail address. Since only the schedule department will be relocated at this time, the mail room at the new location will not be in operation.

Due to the move, new telephone numbers have also been assigned temporarily to the schedule department personnel. The following section of the schedule department can be contacted by phone at the following numbers:

K. W. Webster, Supt. of Schedules	.624-0003
J. H. Taylor, Supv. of Schedules	.624-0085
R. A. Holland, Asst. Supv. of Schedules	.624-0060
Schedule Checking Sect.	.624-0065; .624-0066
Material Control Section	.624-0070
Mileage Section	.624-0083
All others	.624-0095; .624-0096; .624-0097; .624-0098; .624-0099



Edward Delmar, who retired from RTD on March 3 after 39 years service, was given a farewell party by his fellow operators at Division Six on Friday, March 21. Delmar, chosen Operator of the Month for January, 1972, was also presented with a retirement check as a present from his fellow workers.

On hand for the party were several former RTD Division 6 operators, including Wesley Burrill, John Whalen and Joe Krietzman.

Delmar, center, receives the retirement check from operator James Stevens. With Delmar is his wife, Diane. Operator Wally Melander's wife, Kathryn, baked the two cakes.

Sch leg.

Promotions and Transfers

Name	Classification	Div./ Dept.	Date Employed	Date Effective	Name	Classification	Div./ Dept.	Date Employed	Date Effective
Smith, Curtis H.	From: Operator-Extra Supervisor of V.O. To: Supervisor of V.O.	3296	3-18-66	12-1-74	Wick, Robert G.	From: Asst. to Gen. Super. of Maint. To: Super. of Shops & Auto Equipment	3399	7-17-40	12-3-74
Dancy, Eddie (NMN)	From: Operator-Extra Supervisor of V.O. To: Supervisor of V.O.	3296	5-4-68	12-1-74	Grayson, Don C.	From: Operator-Extra Div. Dispatcher To: Rel. Div. Dispatcher	3299	9-28-43	12-22-74
Feickert, Paul R.	From: Operator-Extra Supervisor of V.O. To: Supervisor of V.O.	3296	6-21-69	12-1-74	Giaquinto, Ernest C.	From: Asst. Division Trans. Manager To: Acting Asst. Div. Trans. Manager	3215	3-23-56	12-22-74
Mendoza, Harvey R.	From: Operator-Extra Supervisor of V.O. To: Supervisor of V.O.	3296	6-20-70	12-1-74	Pairis, Dorothy M.	From: Revenue Clerk To: Payroll Clerk	7100	12-14-70	12-22-74
Reyes, Antonio M.	From: Operator-Extra Supervisor of V.O. To: Supervisor of V.O.	3296	8-29-70	12-1-74	Sage, George E.	From: Operator-Extra Schedule Checker To: Schedule Checker	3500	8-21-45	1-19-75
Barry, Patrick	From: Editor Employee Publication To: Editor Writer	4400	11-26-73	12-3-74	Balolong, Archimedes D.	From: Operator To: Operator-Extra Schedule Checker	3207	2-9-73	12-24-74
Salido, Paula	From: Secretary II To: Secretary III	9000	9-3-74	12-12-74	Solomon, Oscar	From: Operator To: Operator-Extra Schedule Checker	3202	8-10-73	12-24-74
Kauffmann, Alan H.	From: Operator To: Operator-Extra Schedule Checker	3208	1-15-59	12-15-74	O'Neill, Richard F.	From: Operator-Extra Schedule Checker	3208	10-30-59	12-29-74
Capoccia, Janina A.	From: Typist Clerk To: Pension & Insurance Clerk	6200	4-9-74	12-16-74	Hawkes, James E.	From: Operator-Extra Schedule Checker To: Operator	3208	10-2-71	12-29-71
Ortega, Cruz J.	From: Temp. Multilith To: Print Shop Clerk	3100	7-27-73	12-9-74	Morris, Lawrence	From: Operator-Extra Schedule Checker To: Schedule Checker	3500	9-29-72	12-29-74
Laue, George G.	From: Operator-Extra Schedule Checker To: Schedule Checker	3500	1-16-71	12-22-74	Romero, Sara E.	From: Secretary II To: Secretary III	5000	5-17-71	1-1-75
Harris, Richard D.	From: Utility "A" To: Laborer "A"	3334	6-4-68	12-22-74	Gordon, Frank E.	From: Operator-Extra Div. Dispatcher To: Div. Dispatcher	3208	7-16-46	12-22-74
Hepp, William F.	From: Operator-Extra Schedule Checker To: Schedule Checker	3500	7-28-72	12-23-74	Bables Jr., Walter	From: Operator-Extra Div. Dispatcher To: Div. Dispatcher	3205	8-10-59	12-22-74
Kovach, William A.	From: Jr. Stock Clk. To: Truck Driver Clk.	7300	11-29-71	12-16-74	Brunswick, Ernest N.	From: Operator-Extra To: Div. Dispatcher	3212	1-27-60	12-22-74
Cerqua, Laurence E.	From: Storekeeper To: Shipping Clerk	7300	11-29-61	12-19-74	Bojorquez, Hugo G.	From: Mechanic "C" To: Mechanic "B"	3303	7-12-73	12-29-74
Shibata, Kenneth W.	From: Jr. Stock Clk. To: Storekeeper	7300	5-26-69	12-19-74	Banuelos, Rigoberto M.	From: Mechanic "C" To: Mechanic "B"	3303	10-12-73	12-29-74
Brown, Don L.	From: Jr. Stock Clk. To: Shop Clerk	3301	5-22-69	12-20-74	Webb, Farrell D.	From: Equip. Foreman I To: Electrical Foreman II	3302	10-3-46	12-3-74
Miley, Jesse L.	From: Truck Driver Clk. To: Storekeeper	7300	7-3-70	12-23-74	Maguire, Harry O.	From: Staff Asst. I To: Staff Asst. II	3299	10-25-46	12-3-74
Reed, Charles R.	From: Stock Clerk To: Shipping Clerk	7300	2-4-71	12-23-74	Lohman, Walter E.	From: Mgr. of Stations & Agencies To: Super. of Passenger Facilities	3216	5-16-47	12-3-74
Huffer, Raymond G.	From: Shipping Clerk To: Stock Clerk	7300	7-12-71	12-23-71	Wilson, Ralph	From: Staff Asst. I To: Staff Asst. II	3299	8-19-67	12-3-74
Litsey, Robert M.	From: Stock Clerk To: Shipping Clerk	7300	11-22-71	12-23-74	Spencer, Milton	From: Staff Asst. II To: Maint & Equipment Specialist	3399	10-29-74	12-3-74
Gillis, Eugene D.	From: Operator-Extra Schedule Checker To: Schedule Checker	3500	10-3-70	12-29-74	Hicks, William H.	From: Operator-Extra Div. Dispatcher To: Div. Dispatcher	3205	11-20-58	12-22-74
Rollins, Jr., Earl	From: Operator-Extra Div. Disp. To: Division Dispatcher	3208	6-18-66	12-22-74	Lowe, Wayne D.	From: Operator-Extra Div. Dispatcher To: Div. Dispatcher	3215	4-20-59	12-22-74
Tincher, John A.	From: Operator-Extra Div. Disp. To: Division Dispatcher	3209	7-22-67	12-22-74	Sims, Eugene H.	From: Operator-Extra Div. Dispatcher To: Div. Dispatcher	3205	8-29-60	12-22-74
Perry, James L.	From: Operator-Extra Div. Disp. To: Division Dispatcher	3203	9-23-67	12-22-74	Johnson, Marcus C.	From: Operator-Extra Div. Dispatcher To: Div. Dispatcher	3202	3-7-64	12-22-74
Namatame, Teichi	From: Staff Asst. I To: Sr. Staff Assistant	3299	12-2-54	12-3-74	Rollins, Earl	From: Operator-Extra Div. Dispatcher To: Div. Dispatcher	3208	6-18-66	12-22-74
Rose, Vernon R.	From: Foreman II/Rel. Mgr. To: Div. Maint. Mgr.	3306	3-3-42	12-22-74	Tincher, John A.	From: Operator-Extra Div. Dispatcher To: Div. Dispatcher	3209	7-22-67	12-22-74
Whittington, Benjamin D.	From: Ex. Rel. Asst. Div. Manager To: Acting Asst. Div. Trans. Manager	3209	3-18-57	12-22-74	Perry, James L.	From: Operator-Extra Div. Dispatcher To: Div. Dispatcher	3203	9-23-67	12-22-74
Mays, Rose M.	From: Information Clk. To: Extra Supervisor Information Clk.	5000	11-19-73	12-22-74	Mullins, Lawrence R.	From: Operator-Extra Div. Dispatcher To: Div. Dispatcher	3203	11-29-69	12-22-74
Long, Loralee M.	From: Accounts Clerk To: Revenue Clerk	7100	10-25-72	12-22-74	Thomas, Larry R.	From: Operator-Extra Div. Dispatcher To: Div. Dispatcher	3215	1-10-70	12-22-74
Lighon, Vera G.	From: (Vac. Rel.) Div. Steno To: Div. Steno	3208	5-30-74	12-22-74	Castaneda, Carlos	From: Supervisor V.O. To: Supervisor V.O. Extra Radio Dispatcher	3296	9-10-66	12-29-74
DuVernay, Sheila M.	From: Payroll Clerk To: Cash Clerk	7100	11-18-74	1-5-74					
Ellison, Sandra J.	From: Typist Clerk To: Temp. Payroll Clk.	7100	11-11-74	1-2-75					



Promotions and Transfers

Name	Classification	Div./ Dept.	Date Employed	Date Effective	Name	Classification	Div./ Dept.	Date Employed	Date Effective
Holliday, Blanton P.	From: Operator To: Trafficman	3221	12-1-56	12-29-74	Anderson, J. C.	From: Mechanic "C" To: Mechanic "B"	3302	6-10-70	1-12-75
Albert, Lester J.	From: Operator To: Operator-Extra Div. Dispatcher	3209	7-8-57	12-29-74	Zevely, James A.	From: Mechanic "B" To: Mechanic "A"	3312	7-24-70	1-12-75
Williams, Willard D.	From: Supervisor V.O. To: Supervisor V.O. Extra Dispatcher	3296	6-23-47	12-30-74	Huizzar, Alfredo	From: Mechanic "C" To: Mechanic "B"	3314	4-24-71	1-12-75
Rayford, Jimmy	From: Operator To: Operator-Extra Div. Dispatcher	3202	3-18-67	12-30-74	David, Edgar G.	From: Mechanic "C" To: Mechanic "B"	3302	5-6-71	1-12-75
Wilson, Clarence	From: Supervisor V.O. To: Extra Radio Dispatcher	3296	12-28-59	12-31-74	Schiratti, Enrique L.	From: Mechanic "B" To: Mechanic "A" Leadman	3307	11-21-73	1-12-75
Taylor, Alvin J.	From: Operator To: Operator-Extra Div. Dispatcher	3210	4-17-71	1-1-75	Hawkins, Gerald M.	From: Mopper-Waxer (Temp.) To: Jr. Stock Clerk	7300	7-15-74	1-12-75
Lensch Jr., Martin G.	From: Operator To: Operator-Extra Div. Dispatcher	3212	10-6-72	1-3-75	Olivas, Michael A.	From: Labor Rel. Assoc. To: Deputy Adm.-Equal Emp. Opportunities	2300	1-10-72	1-13-75
Haynes, Tommy L.	From: Supervisor V.O. To: Supervisor V.O. Extra Dispatcher	3296	12-2-67	1-2-75	Heywood, A. B.	From: Operator To: Operator-Extra Schedule Checker	3211	6-29-73	1-13-75
Kells, John C.	From: Operator To: Operator-Extra Div. Dispatcher	3202	9-22-72	1-2-75	McCormick, T. L.	From: Operator To: Operator-Extra Schedule Checker	3210	4-17-71	1-14-73
Beals, Michael E.	From: Supervisor V.O. To: Supervisor V.O. Extra Dispatcher	3296	10-25-69	1-3-74	Taylor, Peggy J.	From: Surface Planner I To: Trans. Planning Analyst I	4200	3-6-63	1-6-75
Echternach, Mary L.	From: Extra Supervisor Information Clk. To: Community Rep I	9000	6-9-71	1-6-75	Davis, William R.	From: Supervisor- Extra Dispatcher To: Radio Dispatcher	3298	9-28-63	12-29-74
Caronna, Paul J.	From: Operator To: Sr. Passenger Service	5000	9-15-72	1-6-75	Jenkins, Charles R.	From: Supervisor V.O. To: Supervisor V.O. Extra Dispatcher	3296	7-15-67	1-1-75
Wilson, A. L. H.	From: Operator To: Operator-Extra Schedule Checker	3202	8-9-69	1-6-75	Retired				
Seiler III, Walter G. W.	From: Operator To: Operator-Extra Schedule Checker	3207	3-23-73	1-6-75	Butler, Jesse R.	Former Trafficman Trans. to Ind. Leave 7-21-74	3221	11-23-36	11-24-74
Senior, W. C.	From: Operator To: Operator-Extra Schedule Checker	3204	4-13-73	1-6-75	Cummings, Leonard H.	Plumber	3334	2-28-49	11-29-74
Patton, C. N.	From: Operator To: Operator-Extra Schedule Checker	3204	1-15-66	1-7-75	Shaw, Hobart W.	Former Operator Trans. to Ind. Leave 8-14-73	3801	8-19-53	12-1-74
Bailey, Joseph	From: Operator To: Operator-Extra Schedule Checker	3210	6-7-69	1-7-75	Adair, Harry L.	Operator	3209	11-20-74	12-1-74
Brooks, D.	From: Operator To: Operator-Extra Schedule Checker	3205	11-6-69	1-8-75	Neal, John J.	Operator	3206	10-26-50	12-1-74
Winfield, A. A.	From: Operator To: Operator-Extra Schedule Checker	3201	9-18-71	1-9-75	Reinink, Lois M.	Operator	3208	7-25-51	12-1-74
Torres, J. D.	From: Operator To: Operator-Extra Schedule Checker	3202	1-21-72	1-9-75	Fugit, David F.	Operator	3209	5-6-42	12-10-74
Contarino, Alfred J.	From: Operator To: Operator-Extra Schedule Checker	3201	6-29-73	1-9-75	Stroh, Elmer G.	Former Trafficman Trans. to Ind. Leave 11-17-74	3221	1-8-46	11-29-74
Walling, R. N.	From: Operator To: Operator-Extra Schedule Checker	3210	5-20-67	1-10-75	Houghtaling, Donald W.	Operator	3204	11-19-46	12-11-74
Edmonson, Luther E.	From: Asst. Division Trans. Manager To: Division Trans. Manager	3215	1-3-47	12-22-74	Hatfield, Charles	Operator	3209	8-12-41	12-12-74
Owen, Lyle H.	From: Mechanic "A" To: Mechanic "A" Leadman	3315	12-28-66	12-29-74	Phillips, Leroy	Former Mechanic "A" Trans. to Ind. Leave 1-27-74	6201	1-18-46	12-15-74
Diehl, Geoffrey L.	From: Staff Analyst To: Super. Trans. Svcs.	3296	8-2-48	1-6-75	Wheeler, Olin J.	Operator	3209	9-5-45	12-14-74
Ige, Seichi Charles	From: Mechanic "A" To: Mechanic "A" Leadman	3305	10-1-56	12-29-74	Kennett Jr., Edwin	Mechanic "A"	3314	11-16-33	12-19-74
Ritch, Horace	From: Oper-Ext. Sch. Checker To: Schedule Checker	3500	10-30-65	1-22-75	Wright, Marvin R.	Former Operator	6201	11-19-46	12-29-74
Spizzirri, Anthony J.	From: Operator-Extra Special Agent To: Special Agent	3900	7-15-61	1-12-75	Elmore, Lonard	Operator	3208	9-5-46	12-23-74
Rodriguez, Everett J.	From: Operator-Extra Special Agent To: Special Agent	3900	6-27-70	1-12-75	Schuman, Willard V.	Operator	3209	1-30-45	12-29-74
Leahy, Arthur T.	From: Customer Info. Rep. To: Community Rep. I	9000	7-31-71	1-12-75	Reed, Douglas P.	Mechanic "B"	3303	10-24-45	12-26-74
Barta, V.	From: Operator-Extra Div. Dispatcher To: Operator-Extra Schedule Checker	3209	8-22-68	1-12-75	Latvala, Albert (NMN)	Supervisor of Printing	3100	3-21-49	1-3-75
					Addison, Isaiah David	Operator	3211	6-11-47	1-7-75
					Bliss, Alfred Ernest	Operator	3206	2-14-46	12-20-74
					Sims, Thomas R.	Service Director	3216	6-20-44	12-27-74
					Thorne, Edgar D.	Operator	3212	3-13-36	1-7-75
					Deceased				
					Huntoon, William	Former Operator Retired 7-1-49	3205	8-30-19	1-5-75
					Headlund, Ellen Duncan	General Clerk 2	3399	3-10-47	1-6-75
					Hedge, Oliver H.	Former Operator Retired 8-31-72	3210	3-10-45	1-9-75
					Brown, Leary (NMN)	Operator	3202	8-26-58	1-11-75
					Munsford, James E.	Operator	3203	4-15-74	12-28-74
					Sederholm, Bernard J.	Former Mechanic "B" Retired 6-6-75	3314	10-1-59	12-20-74
					Green, Earl E.	Former Operator Retired 12-13-74	3208	1-7-43	12-26-74
					Salgado, Jose	Former Laborer "B" Retired 6-1-58	3334	10-18-26	10-19-74
					Greene, Jess W.	Former Operator Retired 11-1-66	3212	4-1-43	12-20-74



District Facilities Toured by Employees at 1060

Employees at RTD headquarters, who sometimes tend to feel isolated from the far-flung RTD divisions, recently got a closer look at what it takes to keep RTD rolling. During the week of March 16, employees at 1060 So. Broadway were given the opportunity to pick any day of that week for a day-long tour of transit facilities.

For many employees, it was their first close-up look at RTD operation and maintenance facilities. The tour started with a ride on the El Monte Busway via the Spring St. Contraflow lane. On the busway the bus stopped at the County/SC, Cal State and El Monte stations, to allow employees a closer look at these structures. While at El Monte, the tour stopped at Division 9 where Elmo Douglass, RTD field engineer gave a detailed description of the construction going on at Division 9.

Then it was back to Los Angeles, where the next stop was at South Park Shops. Here the tour was divided into smaller groups. Each group visited all the shops and maintenance specialists explained the function of each shop.

After lunch it was on to Division Two, where the tourists were treated to first-hand looks at the Cash Accounting room and the dispatch center. Division 2 manager Earl Wetmore gave a talk describing the operation.

The tour returned to 1060 So. Broadway, and although it had been a full and exhausting day, everyone agreed that the tour had been a worthwhile and informative experience.



Lunch time was also picnic time at the South Park Shops during the week of March 16. Each noontime during the week, a group of RTD employees from headquarters who were making the RTD facilities tour and a group of employees at South Park Shops got a chance to meet each other and enjoy a specially catered buffet luncheon.



Michael DeGhetto, supervisory clerk at the South Park Shops explains the work in one of the shops to Jan Miller, left, key punch operator at the Shops, and Edith Power, center, assistant customer information representative. Art Rahmani, with the dark glasses, labor relations associate, listens attentively in the background.

Musicians Wanted

Do you have an instrument gathering dust in the closet while you're willing to play somewhere? Are you tired of practicing alone because you can't find a group? Are your vocal chords rusting with inactivity?

If your answer is yes to one or more of the above questions you may be just what we're looking for. With almost 5,300 employees within the ranks it has to be possible to gather enough interest to form some type of vocal and instrumental groups. The possibilities are endless. Besides gathering for a musical experience, employees will have a chance to meet people from other departments, and from different areas within Southern California.

If you can sing or play a musical instrument we would like to hear from you. Please fill out this form and send it via District mail to Rick Wilson, Transportation Department at Location 31 by March 15. This will give us time to examine the response and plan various groups.

Further information will appear in future issues of "Headway". Meanwhile, get your instrument out and polished, or test your vocal chords in the shower.

Please complete and return to Rick Wilson, Room 305, Location 31 by May 23, 1975.

Name _____ Badge No. _____

Instruments _____

Vocal Group _____

Do you have your own instrument? _____

Read music? _____

Additional information/Comments _____

KUDOS

Roxanne Carpenter was selected RTD Information Operator of the Month for February. Roxanne, who is information operator four, has been with RTD since 1973. She has received numerous commendations for her "courteous, patient and efficient attitude."

Roxanne was to have been presented with her Certificate of Merit and a savings bond at the March 19 Board of Directors meeting, but was unable to accept her award because of illness.

Peter F. Welsh, who works out of Division 4, was named Operator of the Month for February. Welsh, who drives Line 105 in South Central Los Angeles, has been with the RTD since 1937 and holds a 27-year safe driving award. He has never been reported late for work, and is a member of the RTD Courtesy Club.

Welsh received his Certificate of merit at the March 19 Board of Director's meeting. In the picture above, he is shown receiving



the award from RTD Board Director Baxter Ward while J. J. McCullough, right, Division 4 manager, looks on.

Frances Ryan Honored at Reception

More than 130 RTD employees and retirees were on hand Thursday, March 27, for a reception honoring Frances Gertrude Ryan who retired as secretary to RTD District Secretary Richard K. Kissick.

Frances began at RTD in April, 1945, and during her 30 years at the RTD, worked with several top RTD managers.

She started as office manager under Guy Gifford in the public information department, and worked as secretary to general managers Samuel Nelson and Dale W. Barrett before becoming Kissick's secretary.

Her former bosses, Guy Gifford and Sam Nelson, turned out to pay tribute to Frances, and John Wilkens, manager of employee relations, recounted Frances' career at the RTD. Wilkens also presented her with a framed picture of herself taken shortly after she started at RTD. Richard Kissick read a poem he had composed for her entitled "Frances Gertrude Ryan."

In addition to her many friends, on hand was her sisters, May Ryan who retired from the RTD schedule department in 1972, and Mrs. Teresa Bumstead, who worked for the District from 1945-51.



Frances Ryan

Please Corps Winners Announced

Eleven lucky RTD employees left for Hawaii April 22.

They are winners of the March 27 RTD Please Corp Grand Prize Drawing.

The lucky names were chosen from more than 2,440 names entered in the drawing. The winning names were drawn by RTD general manager Jack R. Gilstrap at the office of RTD president Byron C. Cook.

To be eligible for the drawing, a bus operator, information operator and ticket clerk had to receive one card or letter of commendation during the six-month Please Corp program. According to Bill Wiemer, manager of special projects, nearly 65,000 such cards or letters were received. An employee's name, however, could only be entered once.

The winners left by jet April 22 for Hawaii, where they will stay at the White Sand Hotel on the island of Oahu near Waikiki Beach. Everything except meals is covered, and the winners will also be compensated for time off from work.

The winners are: W. N. Williams, Div. 12; R. E. Wesling, Div. 7; J. D. Green, Info operator; Reggie Palmer, Div. 18; A. T. Natale, Div. 3; C. M. Foxworth, Div. 10; S. R. Archuleta, Div. 2; David Barragan, Div. 7; M. Starks, Div. 4; F. O. Rider, Div. 7 and L. L. Herrera, Jr., Div. 11.



RTD President Byron C. Cook, left, smiles as he picks the name of one of the eleven RTD employees who were winners of the Please Corp Grand Prize Drawing. The lucky 11 won Hawaiian vacations for two on the Island of Oahu. RTD general manager Jack R. Gilstrap, center, and Bill Wiemer, right, manager of special projects, hold the drum which contained the names of the 2,440 employees who were eligible for the drawing.

Operator J. C. Smith Has A "Star" In His Family

John T. Smith, an operator out of Division 1, reports that his baby daughter Carletta, who was born on December 29, became a television actress at the ripe old age of two weeks.

Carletta recently starred in a Polaroid commercial.

Smith's daughter was chosen by an advertising agency to play a character pretty much like herself: a recently-born baby.

The commercial shows a woman being wheeled out of the hospital after having a baby. The proud "father" snaps a picture of the event, and then the developed print is shown.

The commercial took twenty minutes of Carletta's time and earned her well over \$200. About a fourth of it went for agency fees and taxes, and the rest was put in a trust fund established for Carletta. The Smiths don't know yet when the commercial will be aired, but every 13 weeks they will receive residuals to the tune of \$20 a showing.

According to Mrs. Smith, Carletta slept through the entire filming, un-bothered by the cameras, lights, reflectors, or studio noises. Mrs. Smith says, "She was treated as if she were already a star."

Complicated Business

Working in the entertainment industry, however, is a complicated business—even for a two-week old. Little Carletta had to become an official member of the Screen Actors' Guild. She also had to get a social security number, and a permit to work in the entertainment industry: Carletta is now eligible to work in any studio in town.

On hand for the actual shooting, was a social worker from the state welfare department and a nurse. Their presence while infants are working is required by law.

Whether Carletta is destined to become a renowned actress is not yet known. There is a good chance, however, that she might work for RTD when she grows up. In that

Rose Garden On Display

The Los Angeles Recreation and Parks Department reports that the Exposition Park Rose Gardens are now in full bloom, and can be seen daily from 8 a.m. to 5 p.m. free of charge. More than 16,000 roses in 165 varieties can be viewed during April and May, the prime rose-blooming months in Southern California.

The Rose Gardens are located in a seven-acre sunken garden at 701 State Drive. For more information about the gardens, call the Department of Parks and Recreation, 748-5884.

National Reunion of Veterans Slated

Former Division Nine operator Harry Soberg, who retired from the District in 1973, would like to hear from other District personnel who served in the 1st Armored Division during World War II. Soberg is ac-



Carletta Smith

way, she would be following a family tradition: Her brother Johnny Kyser and two uncles Calvin W. Smith and Richard L. Smith, are all operators at Division 4. Then there is her great-uncle James Huey, an operator at Division 18 and two second cousins: operators Jerald Huey at Division 4 and Samuel McReynolds at El Monte, and on her mother's side "RC" Williams, a mechanic at Division 1.

Carletta's commercial was aired on national television for the first time on Saturday, April 19 at the National Basketball Association Play Off Game on CBS(2) and the Saturday Nite Movie on ABC at 9:00 p.m. The following Saturday, April 26, the commercial was aired on American Bandstand, 11:30 a.m. on NBC (7) and the Bob Newhart Show at 9:30 p.m. on Channel 2. The next day, Sunday, April 27, the commercial was shown on the "Cher" Show at 7:30 p.m. on Channel 2.

Hike in Payroll Plan for Work-Watches

The RTD employee payroll deduction plan for watch purchases has been increased from \$100 to \$125. The increase, effective immediately, enables employees to purchase watches required for their work through payroll deduction over a repayment period of six months. The watches may be purchased at the following stores: Merit Watch Shop, 610 So. Main St., L.A.; Pico Watch Shop, 908 W. Pico Blvd., L.A.; J. J. Tholt, 598 W. Avenue 28, L.A.; Ted's Jewel Box, 110 N. Brand Blvd., Glendale.

tive in the Western Chapter of the National Armored Division Association and told Headway the Association is making plans for its national reunion which will be held this August in Los Angeles at the L.A. Hilton Hotel.

Soberg may be contacted at his home at 12734 Hensel, Baldwin Park. His telephone number is ED 8-4908.

RTD's Dr. Ellerbeck Writes Novel

Dr. W. P. Ellerbeck, better known as one of RTD's staff physicians, is also the co-author of a best-selling novel entitled "The Surgeons."

The novel, published by David Mackay and Co. of New York, is now in its second printing and is available in area book stores. The first edition was sold out in January.

According to Dr. Ellerbeck, the novel is about "medicine and the men who practice medicine." Ellerbeck says, "Writing the novel gave me a chance to air some pet peeves. I especially had fun writing about the politics involved between hospital physicians and their jockeying for positions of power within the hospital. The book lets the reader see how a hospital is run."

The book takes the reader through a week in a large metropolitan hospital and each day is a chapter in the novel. The characters are three surgeons and several patients, and the focus of the novel is on their activities, and the behind the scenes intrigues of a large metropolitan hospital. The book also examines several existing medical problems.

Touch of Hollywood

Dr. Ellerbeck's co-author was Shirley Hartman, who has been a secretary to motion picture producer Ross Hunter. Ellerbeck says that he wrote the book from a medical viewpoint and Miss Hartman contributed material from the patient's viewpoint. According to Ellerbeck, he would describe the situations while Miss Hartman would play "word magician." Considering her background, it is not surprising that one of the main characters in the novel is a



RTD's Dr. W. P. Ellerbeck, co-author of "The Surgeons."

motion picture executive.

The authors would eventually like to see the novel developed into a motion picture. Dr. Ellerbeck and Miss Hartman have just completed another novel, also medically oriented.

Jessie Varrie Re-Elected to Board of Directors of L.A. Jr. Chamber of Commerce



Jessie Varrie, salvage agent, has been re-elected to the Board of Directors of the Los Angeles Junior Chamber of Commerce. As a board member, Varrie will head up the Watts Summer Games Committee this Summer. The W. S. G. is the largest project put on by the L.A. Junior Chamber of Commerce.

In the picture, above, Varrie, left, is shown introducing RTD general manager Jack R. Gilstrap to Richard Moos, Chamber president, at the Chamber's Presidential Ball held last March.

HEADWAY

Volume 2

Number 3

Published by and for the employees of the Southern California Rapid Transit District. Send stories, photos, or just the facts to Editor, Marketing and Communications department, 1060 S. Broadway, Los Angeles, Calif. 90015.

Southern California Rapid Transit District
1060 South Broadway, Los Angeles 90015

U.S. POSTAGE
paid

FIRST CLASS
Los Angeles, Calif.
Permit No. 28201