

# Weekly **LOS ANGELES** *Topics*

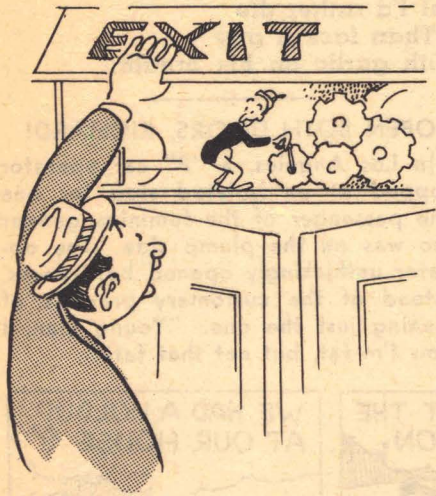


Published weekly by the Public Relations Department, Los Angeles Transit Lines, 1060 South Broadway, Zone 15

VOLUME 8

MAY 12, 1947

NUMBER 19



## MAYBE IT'S MAGIC

hidden switch when he hears you touch the latch.

And, who turns the gas under the water heater on and off? Who pushes the toast up in the toaster? Who opens the exit doors of streetcars and coaches when people want to get off?

This last question so intrigued us that we decided to investigate. We discovered that there is no little man opening the exit doors of our vehicles. Nor is it done by magic. The exit door is operated automatically by air pressure from the car's air tanks. This action of the air locks the brakes of the vehicles. Here's the way it works:

When you come to your destination, you rise from your seat and proceed to the proper exit on your car or coach. You will probably meet other folks hurrying toward the front end who

still think that is the only exit. But you are smart. You have discovered it is foolish to swim up stream. You pull the buzzer cord to notify the operator that you want off, and you step on the treadle. The vehicle rolls to a stop and the operator presses a little red button. This activates a valve, thus locking the brakes. The vehicle is in your control until you step off, for the car or coach cannot move with the automatic door standing open.

As you can see, this makes it much safer than if there were a little man hidden somewhere in the door engines, waiting to be notified by the pull of the buzzer cord that you want off.

The automatic door control has been making transit operations safe in Los Angeles since 1932, when J. R. Brittain, then a

**W**HO turns on the light in the refrigerator when the door is opened?

That question has confounded many thinkers. Treatises, theories, and papers have been written on the subject. There seem to be two sides to the controversy. There are those who believe that the light always stays on, and there are others who claim a little man pulls a

mechanical engineer for the company, modified the development of the National Pneumatic Company. Mr. Brittain applied their safety type exit door, entirely automatic in action, to many Los Angeles vehicles. Since then the majority of our vehicles have been equipped with these treadle doors.

Of course, after your foot leaves the treadle, the door automatically closes. So be careful not to leave your arms behind you when you alight, although the air filled rubber guards act as a protection. However, should an umbrella or purse be caught between the doors, a loud warning bell advises the operator of the car or coach of the situation.

So, make it a habit to leave by

the proper exit on the streetcars and coaches. You won't risk the chance of bumping into a boarding passenger, and it is nice to feel that you have control of the vehicle when you step from it to the safety zone or curb.

### LET'S GO PLACES

**EXHIBIT, MAY 15**—Visit the Eighth Annual Exhibition of Painting and Sculpture by artists of Los Angeles and vicinity. This exhibit will be presented, starting May 15, on the main floor of the Los Angeles County Museum in Exposition Park.

**TAKE CARS 5, 9, F, U, OR V, AND COACHES 18 OR 49.**

**JAZZ CONCERT**—Music lovers—hear your favorite jazz artists at a two-hour concert Monday night, May 12, 8:00 P.M. in the main auditorium, Los Angeles City College.

**TAKE "V" CAR TO MONROE AND VERMONT.**

**"SONG OF NORWAY" AT PHILHARMONIC**—The Los Angeles Civic Light Opera Association presents the first light opera of the season, "Song of Norway," at the Philharmonic Auditorium. Most cars and coaches serve the Philharmonic Auditorium, located at Fifth and Olive Streets. Travel to the opera the fashionable way—by Transitliner.

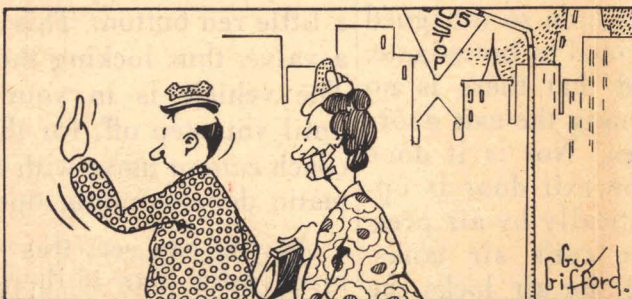
### FATE WORSE THAN DEATH

I'd gladly be shot at sunrise  
For I have no fear of death  
But I'd rather die  
Than face a guy  
With garlic on his breath.

### OPEN BOTH DOORS, RICHARD!

In Los Angeles, a "P" car operator stopped at an isolated stop for one lone passenger of the feminine gender who was on the plump side. The operator unthinkingly opened both doors, instead of the customary practice of opening just the one. "Young man, I know I'm fat, but not that fat!"

J  
O  
E



W  
O  
E

