



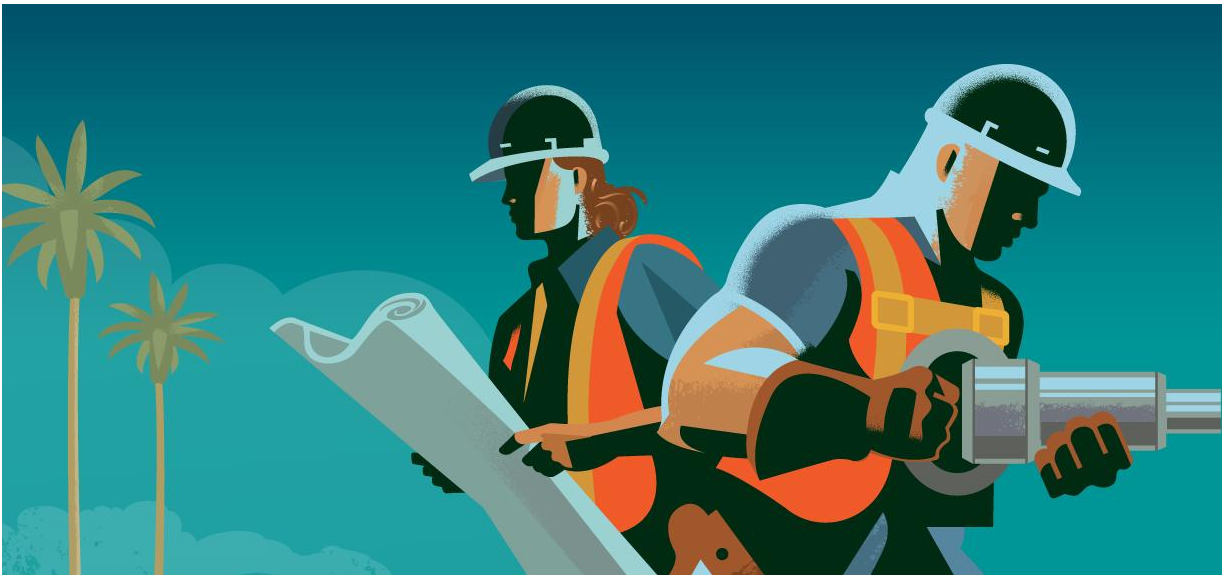
If you're like us, you get to work each day excited and inspired by the world of extraordinary transportation innovations happening all around us. Technologies emerge and evolve. Mobility platforms grow and connect us in new ways. Groundbreaking partnership models are developed to address some of the most challenging mobility problems in America.

This is a space to focus on these innovations, the impact they could have, and how they might be used here in Los Angeles County. We want to move the conversation forward, amplify the ideas that excite us the most, and highlight what our Office is doing to take advantage of what the world has to offer.

January 2017

Share this email:





MEASURE M IS A GAME CHANGER. INNOVATION CAN CHANGE THE GAME

What does an innovation agenda look like in a Measure M world?

With the passage of Measure M, Los Angeles County made a bold choice for the future of transportation in the region. To deliver results, Metro must adapt to find more innovative new ways to deliver projects, optimize existing services, expand our toolkit, and enhance our customers' experiences. [Read more...](#)

BETTER TRANSIT ACCESS, ON DEMAND

With a major federal transit grant for on-demand service, Metro will seek to redefine transit access.

In the Office of Extraordinary Innovation it is our job to test the transportation of the future today. OEI is excited to announce a new federal transit grant for \$1.3 million to help us deliver on that idea by testing on-demand transportation solutions. [Read more...](#)

SMARTER TRANSIT MAKES FOR SMARTER CITIES

Can the world's biggest tech firm and a leading transportation non-profit help to bring smarter transit to Los Angeles?

Orville and Wilbur, Charles and Ray, Page and Brin: The best innovations often result from collaboration. OEI is excited to join the Smart Cities Collaborative, a

[Subscribe](#) to our email list

be working alongside 16 other cities to design and test innovative new transit solutions to support smarter cities. [Read more...](#)



RIDING IS BELIEVING: OEI KICKS OFF RIDEALONG PROGRAM

Can a simple bus ride change our perspective on how to solve transit's toughest problems?

"Design thinking" is a methodology that can help us understand and develop creative ways to solve specific issues. Key to this process is the principle of empathizing with the user. OEI has launched a ridealong program to help Metro staff to help identify new solutions to old problems. [Read more...](#)

OEI LAUNCHES INNOVATION ADVISORY BOARD

Transportation experts from around region and the state will help to chart Metro's innovation course.

Innovation doesn't happen in a vacuum, and it doesn't happen without broad support. That's why we're fortunate to have the advice and support of our Innovation Advisory Board. Here are five take-aways from our first meeting. [Read more...](#)

INNOVATION SHOUT OUTS

Who's Innovating at L.A. Metro?

A roundup of the Metro colleagues we'd be lost without!

Charles Adams

Cal Hollis

Therese McMillan

Mauro Arteaga

Bernard Jackson

Donna Mills

Debra Avila

Tom Kefalas

Dennis Mori

Martin Batistelli

Greg Kildare

Dan Nguyen

Rick Clarke

Lan-Chi Lam

Robin O'Hara

Mario Del Rosio

Randy Lamm

Ivan Page

John Drayton

Dan Levy

Scott Page

Jim Gallagher

Jacob Lieb

Gary Spivack

Joni Goheen

Denise Longley

Cary Stevens

Jon Hillmer

Israel Marin

Quinn Tang

Bob Holland

Al Martinez

Share this email:



You have subscribed to receive Metro information, [edit your preferences](#) or [unsubscribe](#).
Your privacy is important to us, please review the [Privacy Policy](#).
Was this email forwarded to you? [Sign up](#) to receive our future emails.
View this email [online](#).

© 2017 Metro (LACMTA) One Gateway Plaza, Los Angeles, CA 90012-2952

This email was sent to .
To continue receiving our emails, add us to your address book.

Bus & Rail Transit information
323.GO.METRO (323.466.3876)
6:30am - 7pm (Monday - Friday)
8:00am - 4:30pm (Saturday/Sunday)



[Subscribe](#) to our email list