

MAR. - APR. 1949
PACIFIC ELECTRIC
Magazine



*Mr. & Mrs. Gus Gundersen
749 Athens Blvd.
Los Angeles 44, Calif.*

how

THE AUDITOR AUDITED

Railroad Accounting Procedures Are Prescribed by Law, and Federal, State, and City Financial and Engineering Experts Continually Check the Accuracy of Pacific Electric Books

By Jno. J. Suman, Auditor

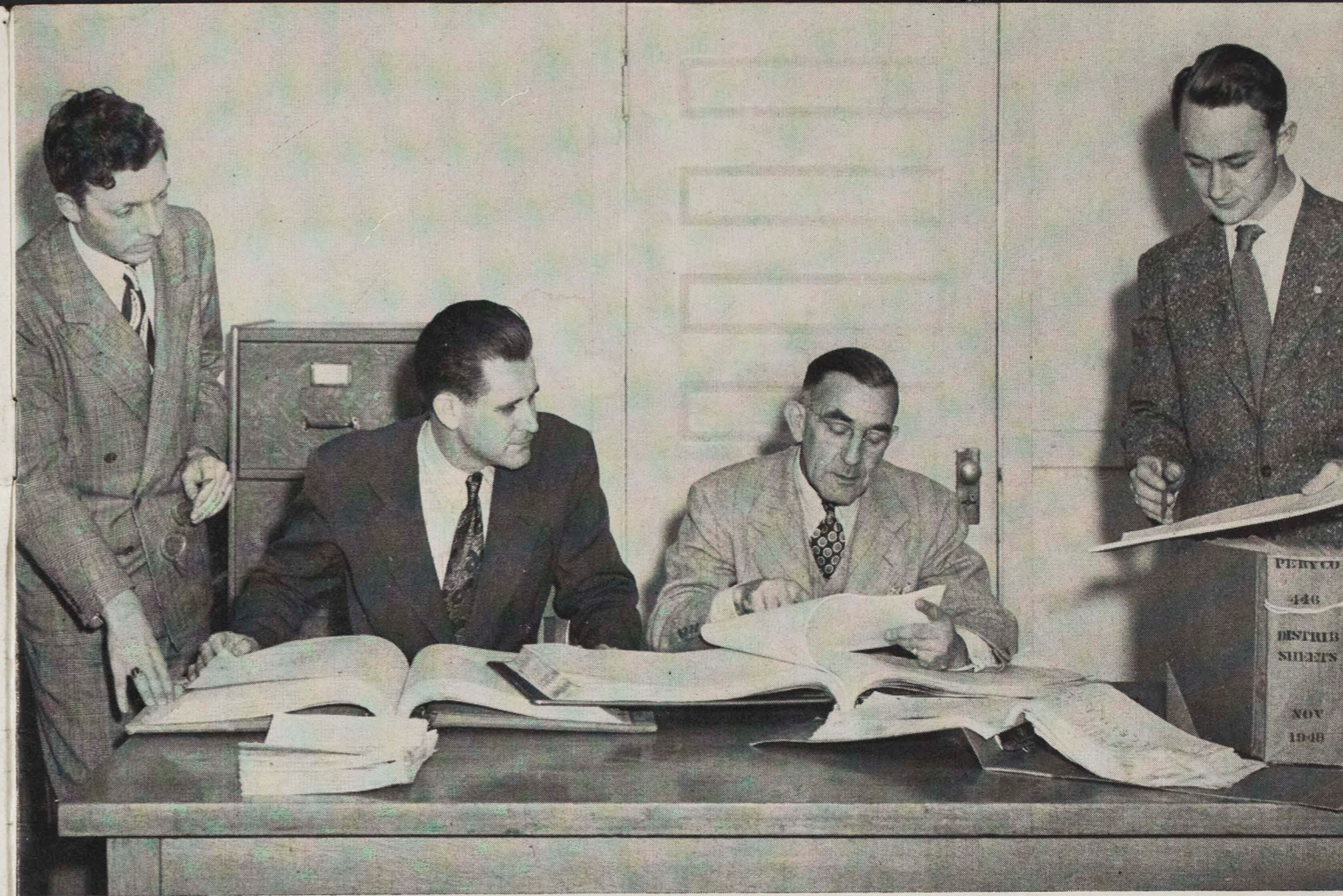
FEW PEOPLE REALIZE the extent of control exercised by governmental bodies over the accounting practices of railroads. Pacific Electric is no exception to the rule. The present writer and his corps of 232 Accounting Department employes are by law required to follow in great detail the regulations prescribed for electric railroads by federal, state, and city authorities.

The principal governing influence is that which might be termed the Accounting Department's textbook: the "Uniform System of Accounts for Electric Railways," prescribed by the Interstate Commerce Commission

and adopted by the State of California Public Utilities Commission. (See cut below.) This booklet is the foundation of Pacific Electric's accounting procedures.

There are, however, other regulatory bodies whose requirements do not in all instances agree with those of the ICC. Consequently, it is necessary for the company to maintain appropriate additional records to reconcile the ICC-prescribed accounting with the requirements of other government agencies.

Examiners for the ICC usually make annual review of the general books of the Pacific Electric Railway



INSPECTING PE BOOKS—Accountants from Public Utilities Commission of the State of California on one of their unannounced visits to Pacific Electric's Accounting Department. Theodore Stein, third from left, is Principal Accountant for CPUC. He is being assisted by R. R. Entwistle, Senior Accountant, second from left, and by A. L. Gielegem, right, and R. H. Shirley, left, Assistants. From time to time these men review the accounts, records, and general books of the company. Mr. Stein, a recognized authority on pub-

lic utilities accounting, personally supervised and devoted much time to development of PE Railway Co. formula governing the separation of railway operating revenues, railway operating expenses, taxes assignable to railway operations between freight (including mail and express) and passenger rail service. Accounting bodies such as the Interstate Commerce Commission and the U. S. Maritime Commission commented very favorably upon this formula, for which PE is greatly indebted to Mr. Stein. Books here are only a few of those inspected.

UNIFORM SYSTEM OF ACCOUNTS

FOR

ELECTRIC RAILWAYS

ISSUE OF 1947

PRESCRIBED BY THE
INTERSTATE COMMERCE COMMISSION

EFFECTIVE JANUARY 1, 1947



26

OPERATING EXPENSES

19. MISCELLANEOUS WAY EXPENSES.

This account shall include all expenses in connection with maintenance of way not properly chargeable to other accounts.

22. DISTRIBUTION SYSTEM.

This account shall include the cost of labor and material used in repairing the distribution system, as follows:

(a) Overhead feeders for transmitting low-tension power from power stations and substations, including insulators and connections.

(b) Underground feeders for transmitting low-tension power from power stations and substations, including insulators and connections.

(c) Track bonding, including track bonds, cost of punching and drilling rails for track bonds, and testing for defective bonding.

(d) Overhead trolley, including cost of trolley, guard, span, strain, supplementary, and other wires, and all catenary construction used in connection with the overhead trolley system.

(e) Trackless trolley overhead systems.

(f) Third rail, including cost of third rail, braces and supports for same, insulating devices, material used for covering and protecting same, and all fixtures and appliances connected with third-rail construction.

(g) Underground contact rails, including cost of contact rails and appliances in underground contact systems, and appurtenant braces, supports, and insulating devices.

(h) Poles and fixtures for supporting overhead electric construction.

(i) Conduits for underground wire and cables, including manholes, sewer connections, etc.

To this account shall be credited the value of material removed. When a company does an incidental power, light, or heat business, the cost of repairing transformers, meters, and wiring used in connection with the delivery of power sold shall be included in this account.

NOTE.—When the electric current generated or received is changed by means of rotary converters, motor generator sets, or static transformers (substation apparatus), that portion of the line or outside conductor system carrying current of other than the operating kind or voltage shall be classed as transmission system. When the electric current is generated or received and used substantially unchanged in voltage and kind, the line or outside conductor system, including feeders, trolley wire, booster circuits, and supplementary return, if any, shall be classed wholly as distribution system. The lines between generating stations and substations shall follow the same rule as other lines.

COVER AND TYPICAL PAGE of Interstate Commerce Commission booklet of 135 pages. This manual prescribes with great exactitude how accounting procedures of electric railroads, including Pacific Elec-

tric, shall be set up, and under what head every item of expense or income shall be placed. ICC experts in accounting of all kinds come unannounced any time they wish to see if rules are being followed.

Company. The Bureau of Internal Revenue also periodically sends agents and examiners to audit income tax returns and to check underlying records of the company in connection with miscellaneous taxes, transportation taxes, alcohol control, and various special matters. In addition to these two major audits, the company's books and reports are frequently inspected by specialized accountants, examiners, and tax experts working out of other government agencies. From the California Board of Equalization come auditors to scrutinize records in connection with taxes on motor vehicles, fuel, and sales. State Tax Commissioner auditors investigate income tax returns. The State Public Utilities Commission sends its engineers to look into costs of operation, its accountants to see that state bookkeeping requirements are met. Then there's the City of Los Angeles, to which the Pacific Electric Railway pays a sizable chunk of taxes: the City Board of Public Utilities accountants also check the records to insure the accuracy of PE's accounts.

It can readily be seen from the above facts that auditing the Auditor is a never-ending program. The wonder of it all is that none of the various classes of experts has ever filed a complaint criticizing PE's ac-

counting practices. On the other hand, all have frequently complimented the writer and his staff for the precise manner in which regulations are met, for the co-operation they have received, and for the "open book" policy which has assisted them in performing their duties.

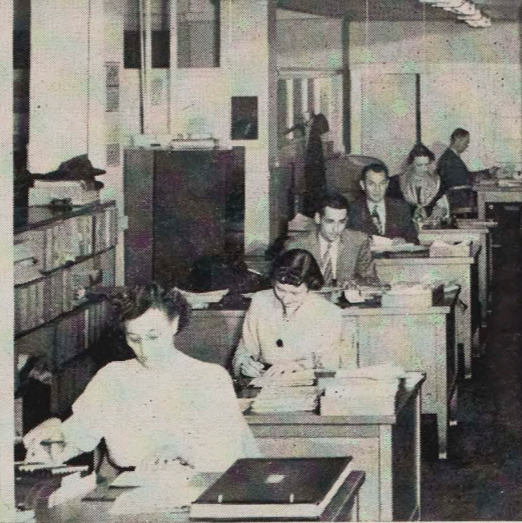
Then what about that mysterious "second set of books" one occasionally hears referred to by suspicious-minded individuals who take the attitude that all published figures are mere blinds carefully arranged to show losses and conceal the "enormous profits"? "If the real figures were published," say these wiseacres, with a knowing nod, "you'd soon see that the transportation business is a gold mine."

Bunk! Play a new tune, brother! That one's worn out. With the allocation of every item of income and expense exactly prescribed by law, and with many regulatory bodies continually checking—independently of each other—the records of the company, one might suppose that their experts, *sometime*, would discover the deception. After all, the federal, state, and local governments are interested in seeing that the proper

(Continued on Page 7)



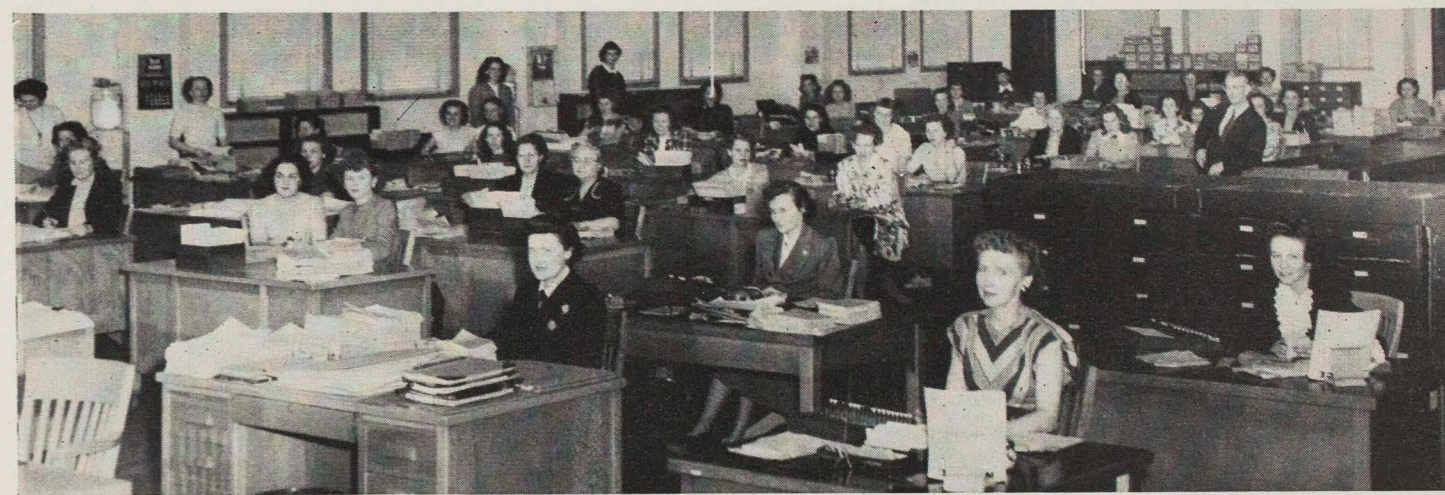
MISCELLANEOUS AND DISBURSEMENTS ACCOUNTS ARE IN ROOM 240



MISCELLANEOUS ACCOUNTS IS THE SECTION SHOWN IN THIRD PICTURE AT RIGHT



FREIGHT ACCOUNTS BUREAU IS IN ROOM 273



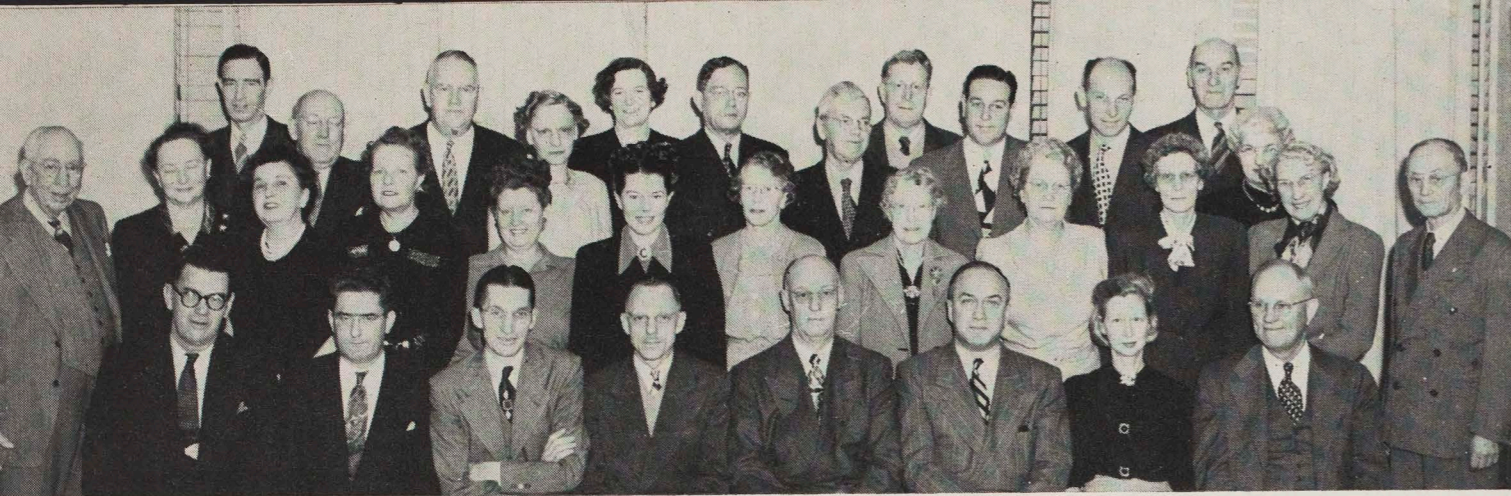
PASSENGER ACCOUNTS BUREAU IS IN ROOM 399

MAIN OFFICES OF PACIFIC ELECTRIC'S ACCOUNTING DEPARTMENT

PAY ROLL ACCOUNTS BUREAU IS IN ROOM 299

IT HAD TO BE PHOTOGRAPHED IN TWO SECTIONS





25 YEARS OR MORE IN THE ACCOUNTING DEPARTMENT

FRED B. EGGEMAN (rear row, extreme right), who started Jan. 18, 1906, tops the seniority list of Accounting Department employees still in active service in the department. All others, however, have 25 or more years of service. Front row, left to right: W. H. Alexander, Head Clerk, Freight and Car Service Accounts; A. T. Sharp, Head Clerk, Disbursements Accounts; G. S. Watson and E. H. Uecker, Assistants to Auditor; J. J. Suman, Auditor; L. M. Becker, Assistant to Auditor; Florence B. Haldeman, Head Clerk, Passenger Accounts; C. W. Knight, Special Accountant. Second row: J. K. Hubbard, Clerk, Be'lva Dale, Head Typist, Sarah E. Gorrell, Head Calculator Operator, and Ellen E. Sparks, Clerk, Freight and Car Service Accounts; Anna F. Beseman, Head File and Mail Clerk, and Gladys I. O'Connor, Assis-

ant Head Clerk, Disbursements Accounts; Marion Snowden, Assistant Head Clerk, Fannie C. Jones, Grace Shreeves, and Amelia Grenke, Clerks, Psgr. Accts.; Madelyn M. Mathews, Walter W. Morrison (latter now retired), Clerks, PR Accts. Back row: W. E. Keelin, Special Accountant; A. F. Manhart, Clerk, Disbursements Accounts; F. J. Ogden, Clerk, Miscellaneous Accounts; Beulah B. Williams, Clerk, Pay Roll Accounts; Irene F. Falconer, Assistant Head Clerk, Miscellaneous Accounts; J. A. Owen, Assistant Head Clerk, Pay Roll Accounts; James Gould, Assistant Head Clerk, Freight and Car Service Accounts; R. T. Knowlton, Special Accountant; J. B. Thatcher and G. B. Lamm, Clerks, Freight and Car Service Accounts; Mr. Eggeman, Special Accountant; and Jessie E. Kremer, Clerk, Freight and Car Service Accounts.



HEAD CLERKS, ACCOUNTING DEPARTMENT—Left to right are L. T. Tighe, Disbursements; G. E. Henley, Recheck Head Clerk, Freight and Car Service; A. E. Hanna, Pay Roll; J. L. Pujol, Miscellaneous; P. M. Still, Head Clerk, Freight and Car Service; Miss Florence B. Haldeman, Passenger; W. H. Alexander, Senior Head Clerk, Freight and Car Service; and A. T. Sharp, Disbursements. These eight people handle about 200 Accounting employees.

INGABORG JOHNSON, in a corner of the Miscellaneous-Disbursements Accounts office, operates the big bookkeeping machine, through which funnel almost all accounting records. When she finishes a record, it is posted in the general ledger, most important of books.



MISS JEANNE M. PRATT
Secretary to the Auditor



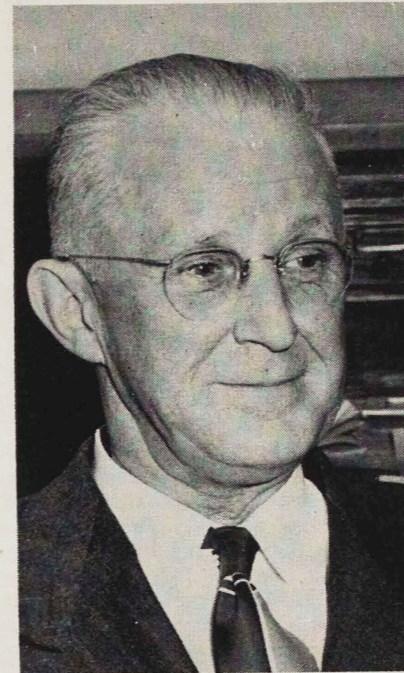
COVER PICTURE—Phyllis Henderson busy on a typical machine job in Accounting—that of Comptometer Operator, pencil in hand.

THE AUDITOR AUDITED

(Continued from Page 8)

amount of taxes is paid, and that investment accounts are properly kept to establish a basis for a rate of return not in excess of that considered reasonable by the

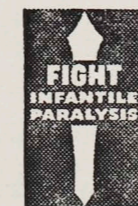
public commissions. Basically, that is the reason for the continual inspections they make of the company's books. Furthermore, sworn statements of the company's financial condition are filed yearly with federal, state, and city commissions, and are available for public inspection.



L. B. McNELLY
Special Accountant to Auditor.

Polio Precautions Parents Should Follow

WARNING that the 1949 polio season is "just around the corner," the National Foundation for Infantile Paralysis has issued a list of precautionary measures to be observed by those in charge of children during the epidemic danger period which usually runs from May through October, reaching its peak during the hot, mid-summer months. The five easy-to-follow health rules for children are:



1. Avoid crowds and places where close contact with other persons is likely.
2. Avoid over-fatigue caused by too active play or exercise, or irregular hours.
3. Avoid swimming in polluted water. Use only beaches or public pools declared safe by local health authorities.
4. Avoid sudden chilling. Remove wet shoes and clothing at once and keep extra blankets and heavier clothing handy for sudden weather changes.
5. Observe the golden rule of personal cleanliness. Keep food tightly covered and safe from flies or other

New-Type Camera For Horace F. Brenton

MASTER SERGEANT Perry S. Brenton, USMC, saw an unusual camera on a store window in Massachusetts. It looked like a large-size Kodak, but it was in reality a self-contained photographic laboratory, capable of taking a picture, developing the negative, and producing a finished print all within 60 seconds.

So Sergeant Brenton bought one and sent it to his father, Horace F. Brenton, of PE's Freight Traffic Department. When Mr. Brenton received it March 15, he was the first person on the Pacific Coast to own the new Polaroid Land camera.

After snapping the picture, the operator pushes a film release button and pulls out a paper tab from the camera to remove the negative of the last picture taken. This procedure sets into operation the developing, fixing, and printing process, so that within one minute the back of the camera may be opened and a finished 3 in. by 4 in. sepia print, complete with deckle edges, is ready for use. Closing the back of the camera, the operator may then snap another picture.

Needless to say, Mr. Brenton is mighty proud of his portable photographic studio and laboratory, and of the honor of being the first owner of such an instrument on the Pacific Coast. West Coast dealers will not have them in stock for another month, he says.

insects. Garbage should be tightly covered and, if other disposal facilities are lacking, it should be buried or burned.

The National Foundation also listed the following symptoms of infantile paralysis: headache, nausea or upset stomach, muscle soreness or stiffness, and unexplained fever. Should polio strike in your family, call a doctor immediately. Early diagnosis and prompt treatment by qualified medical personnel often prevent serious crippling, the National Foundation pointed out.

If polio is actually diagnosed, contact the chapter of the National Foundation for Infantile Paralysis serving your community. The chapter will pay that part of the cost of care and treatment which patient or family cannot meet.

Cut out and keep for reference.

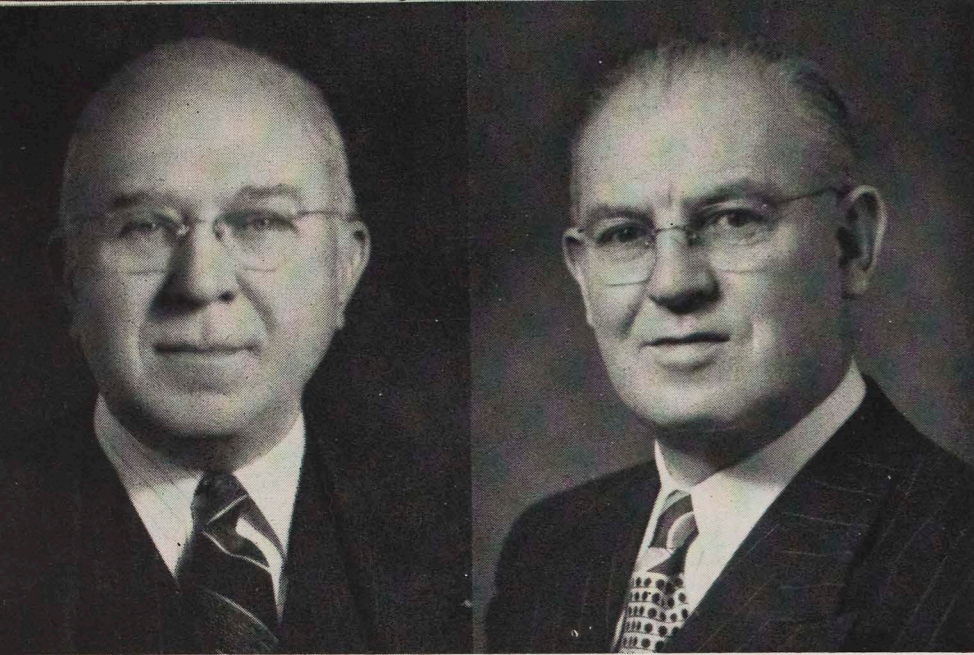


HORACE F. BRENTON, of Freight Traffic, with his new Polaroid Land camera and a print of a picture he made with the camera. It took only 60 seconds from the wink of the shutter to the finished product. This photo of Mr. Brenton was taken by the Long Beach Press-Telegram for its magazine section because this PE employe is the first person to own this camera on the Pacific Coast.

Ceremony Inaugurates Watts Restroom Project

WATTS RESIDENTS are currently rejoicing over work in progress on the new rest rooms at the Watts station. A joint project of Pacific Electric and the City of Los Angeles for the benefit of the public and of PE passengers, the rest rooms were begun on Monday, March 28, when General Manager T. L. Wagenbach, Watts Agent Eldon L. Rea, and a number of Los Angeles and Watts civic leaders attended the ceremony of turning the first shovelful of earth. George H. Moore, Los Angeles City Councilman, W. R. Blakely, Supt. of Building Construction for the City of Los Angeles, E. J. Edman, President, Watts Chamber of Commerce, and Mrs. Fannie Rembert, President, Watts Women's Association, were among the more prominent leaders in attendance.

Construction is by the City, and the anticipated completion date is approximately July 1.



F. E. GEIBEL

E. A. STEVENS

F. E. Geibel, Supt. of Equipment, Retires; Succeeded by Stevens

FRED E. GEIBEL, Superintendent of Equipment, retired from service April 1 after 27 years with the system. Since 1937 he had been in charge of maintenance and repair of all Pacific Electric rail and automotive equipment.

Born in Alabama, and a graduate of Alabama Polytechnic College in electrical engineering, he paid his college expenses by working for the Central of Georgia Railroad. In 1906 he entered the General Electric Test Course at Schenectady, spent a short time in GE's power and mining engineering department, went to Chattanooga, Tenn., with an engineering firm, and in 1908 went west to join the Southern Pacific Co. in the electrical engineer's office on the work of electrifying the Oakland, Alameda, and Berkeley East Bay Suburban Lines. In 1914 he was appointed assistant electrical engineer for Southern Pacific at San Francisco.

He moved to Southern California in 1921, served briefly with the Pacific Fruit Express electrifying steam ice plants, was employed as special engineer with the California Railroad Commission, and entered PE service as special engineer in January, 1922. By November he had become Assistant Superintendent of Equipment.

"Mr. Geibel's services have been outstanding during his entire career with the Company," commented President O. A. Smith. "His executive ability, resourcefulness, and ingenuity were of special value during the war, when, in spite of material and parts shortages, unprecedented volumes of war freight and war workers had to

be moved with maximum speed and with a minimum of delay from equipment breakdowns."

The retiring Superintendent took a keen interest in employe welfare. He is a Past President of the Pacific Electric Club and the Pacific Electric Masonic Club, and advocated numerous educational programs. He is also a Past President of the Pacific Railway Club and a member of the Los Angeles Rotary Club.

STEVENS HISTORY

E. A. Stevens, who succeeds Mr. Geibel as Superintendent of Equip-

ment, is no newcomer to Pacific Electric employes. Assistant to the Superintendent of Equipment since November 1, 1937, he started as Junior Draftsman in the Mechanical Department, December, 1906.

During the consolidation he worked at the West Hollywood Shops in 1911, and in 1912 and 1913 helped broad-gauge the Redondo Beach Rail Line of the Los Angeles-Redondo Railway Co. In 1918 he was appointed Assistant Chief Draftsman, and in 1920 became Chief Draftsman, actively engaged in designing the 1100-class cars. From 1924 to 1937 he was Special Engineer.

Mr. Stevens is a native of Colorado, where his father was Assistant State Geologist. Born in Central City, young Ernie went through grammar school in Denver and Loveland, and then went to England for five years, during which time he finished his education at a private academy. He then successfully passed the entrance examinations at the College of Preceptors in that country, but the necessity for his family to return to the U.S. in 1905 prevented him from matriculating at that college. He came to California and went to work for Pacific Electric the following year.

Mr. Stevens is a member and Past Master of the only French-speaking Masonic Lodge in Los Angeles—Vallee De France—and is also a member of the PE Masonic Club. He belongs to the Pacific Railway Club and the Locomotive Maintenance Officers' Association.

Collecting rare and antique clocks is one of his hobbies. He has about

March-April, 1949

March-April, 1949

PACIFIC ELECTRIC MAGAZINE

9

30 of various designs. A lover of the out-of-doors, he enjoys camping and living in the mountains. Inspecting old railroads in remote places also fascinates him, and he makes occasional trips, usually accompanied by Mrs. Stevens, to see them for historical research purposes.

The Stevenses have one son, Jean, a lieutenant commander and aeronautical engineer in the U.S. Navy.

Employes extend their best wishes to Mr. Geibel in his retirement and to Mr. Stevens in his new position.

President's Secretary, K. L. Salmon, Retires

Kenneth L. Salmon, Secretary to the President, retired April 1 after 28 years of service with the Pacific Electric Railway Co.

He was first employed as a Clerk in the General Superintendent's Office, Transportation Department, in 1921, and rose to the position of Assistant Chief Clerk. Later he was chosen to be Executive Secretary to Vice President A. T. Mercier, and continued in that capacity when O. A. Smith succeeded Mr. Mercier. Since 1937, when Mr. Smith became resident, Mr. Salmon had been his Secretary.

Before coming to PE Mr. Salmon worked for Western Union as a Steno-Clerk in San Francisco, 1909-1920, and from 1920 to 1921 was associated with the Ryan Fruit Co., Los Angeles.

His wife, Katherine, works as Pass Clerk-Receptionist in the Transportation Department.

Mr. Salmon's many friends extend their best wishes for his happiness.

ASK IF YOU DON'T UNDERSTAND

WE WANT TO HELP YOU DO YOUR JOB RIGHT.

— Copyright Kelly-Read & Co., Inc., Rochester, N.Y.

LET'S DO IT RIGHT!

THERE IS no greater satisfaction that a person can have than to know that what he is doing he is doing right.

All of us folks take pride in doing our jobs well — doing them RIGHT!

Still, no matter what our job may be, there always are changes coming up, new systems, new plans, new ideas — which mean that we may have to do our jobs a little differently.

At such times, any of us may find ourselves not knowing just how to do the job the right way.

Under those conditions, it's just a normal human reaction to go ahead to try to do the job anyhow even though we're not absolutely sure we know how.

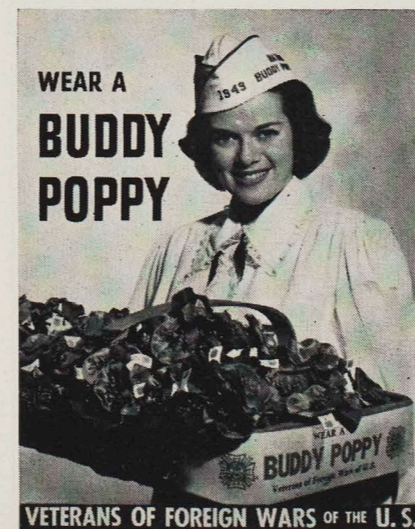
Don't follow that plan! Whenever you don't understand something about your work, ask your boss about it to make sure you're doing it correctly.

It's part of our job to help you do your work right. But, we can only help you if you come to us with your questions.

Retirements

VERY BEST WISHES for many more years of peaceful, happy living to the following employes, who retired, according to the Treasurer's office, during the months of February and March. May their years of loyal service bring their just rewards, and may their memories of PE be always pleasant ones.

NAME	Occupation	Department	Years of Service
Thomas M. Aikin	Substation Operator	Engineering	33
Henry Bell	Carpenter	Mechanical	25
Fred E. Geibel	Supt. of Equipment	Mechanical	27
Ogle B. Glanden	Conductor, West	Transportation	26
John Hozman	Upholsterer	Mechanical	20
William D. Jensen	Pipe Fitter	Mechanical	20
Christopher Johnson	Towerman	Transportation	29
Ynocencio Martinez	Track Laborer	Engineering	6
Newton E. Potter	Clerk	Transportation	13
Charles A. Shook	Chief Instructor	Transportation	35
Vaughn W. Smith	Blacksmith	Mechanical	3
William Staudigel	Conductor, West	Transportation	28
William M. Sutherland	Sheet Metal Worker	Mechanical	26
Carl J. Thorin	Frt. Car Inspector	Mechanical	24
Arthur D. Woodbridge	Guard	Special Agents	29
Eustace L. Young	Mgr. Land & Tax	Land & Tax	38



HONOR THE DEAD by helping the living through your purchase of a poppy to wear on Memorial Day.



FLOYD W. COX, West Hollywood Trainman, originator of the Golden Rule Club. The idea seems to be catching on rapidly on the West.

West Hwd. Man Forms 'Golden Rule' Club

By Bill Newman

FROM A FISHING TRIP, West Hollywood Trainman Floyd W. Cox conceived an idea.

His car broke down on the way home, and he had to call a tow truck to bring it back. Tow trucks cost money.

"Why not," he mused, "have friends you can call on to tow you if your car breaks down? Why shouldn't the Trainmen help each other out in such emergencies as an auto break-down on the way to work? Why shouldn't a fellow have in his pocket some telephone numbers of Trainmen with cars who could tow his stalled automobile and get him to work without a miss-out?"

"Why not," he thought, "form a Golden Rule Club?"

So he did.

As of April 6, 106 West Hollywood Trainmen who own autos had joined the club. They agree to carry a tow-rope or cable in their cars at all times, and to come to the rescue at once if a fellow member telephones that he is having trouble with his car. Their reward? Just the sense of good comradeship resulting from helping the other fellow out. Chances are that some day he'll help them out, too.

To save the cost of printing a special membership list, the Magazine herewith prints the names, addresses, and telephone numbers of the "charter members." Changes and supplements will be made as necessary.

The idea is catching on, and it is anticipated that the Club will expand so that when trouble arises help can be located in outlying areas such as Santa Monica, Beverly Hills, and the San Fernando Valley.

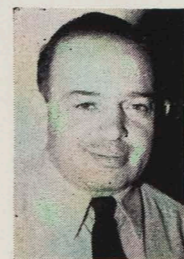
Why not a Golden Rule Club for every district?

GOLDEN RULE CLUB

Membership List

Arnold, R. E., 844 Clark St., West Hollywood.....	CR 6-2642	Hearn, J. C., 1527 Screenland Ave., Burbank.....	CH 6-2665
Ashley, H. E., 849 So. Gramercy Dr., Los Angeles.....	FA 5572	Hill, Paul, 671 N. Mariposa, Los Angeles.....	NO 6205
Ashley, M. L., 538 1/4 No. San Vicente, West Hollywood.....	BR 2-3063	Hopkins, Geo. R., 833 Elwood, West Hollywood.....	CR 1-5923
Banta, Glenn, 737 Huntley Dr., West Hollywood.....	CR 1-8375	James, G. M., 2770 Knox St., Los Angeles.....	NO 8484
Biehl, M., 815 W. 59th Pl., Los Angeles.....	CR 6-6412	Jeffus, J. W., 1523 W. 59th Pl., Los Angeles.....	PL 2-3538
Birchfiel, Robert L., 4215 Laurel Grove, Studio City.....	SU 2-0438	Kidd, Charles D., 4157 Vantage Ave., North Hollywood.....	SU 2-6901
Bogartz, A. B., 17903 Horst Ave., Artesia.....	TO 5-3369	Koeper, T. G., 955 1/2 Palm Ave., Los Angeles.....	CR 1-0463
Boswell, T. E., 1056 Riata Ave., Venice.....	Sta. Mon. 6-5291	Lamb, J. G., 2006 Parnell Ave., Los Angeles.....	AR 3-2471
Brown, D. A., 1608 W. 38th Pl., Los Angeles.....	AX 9877	Loewing, R., 1445 N. Gardner, Los Angeles.....	CR 6-6412
Buda, R. L., 8956 Vista Grande, West Hollywood.....	CR 6-0309	Lomba, R. S., 919 N. Poinsettia Ave., Compton.....	NEwmark 2-7575
Burk, Frank A., 830 1/2 Elwood St., Los Angeles.....	CR 5-3240	Low, E. R., 6571 Fountain Ave., Hollywood.....	HE 3676
Burr, G. W., 1259 Montecito, Los Angeles.....	CR 6-6412	Marshall, A. B., 9008 Norma Pl., West Hollywood.....	CR 1-2908
Burton, J. S., 2614 Kenwood Ave., Los Angeles.....	RE 2-9236	McAnn, J. H., 8940 Dick St., West Hollywood.....	CR 6-7200
Butcher, R., 4644 Vineland Ave., North Hollywood.....	SU 3-6779	McGowan, W. F., 1404 S. Andrews Pl., Los Angeles.....	RE 2-3981
Camatser, Earl F., 3500 E. Colorado St., Pasadena.....	CR 6-6412	Miller, Geo. A., 318 Concert St., El Monte.....	CR 6-6412
Campos, Louis A., 5645 1/2 Fair Ave., North Hollywood.....	SU 1-9491	Moore, E. L., 3401 Arland, San Gabriel.....	AT 0-2585
Capps, L. W., 9020 Dick St., West Hollywood.....	CR 5-6597	Mullins, S., 545 Norwich, West Hollywood.....	CR 5-0578
Casey, H. L., 3633 Effie St., Los Angeles.....	CR 6-6412	Neel, C. W., 833 Elwood St., West Hollywood.....	CR 6-0785
Clark, E. R., 6950 Etiwanda, Reseda.....	CR 6-6412	Newman, W., 2401 Burnside Ave., Los Angeles.....	WH 8858
Cleek, G. C., 6861 Alta Loma Terrace, Hollywood.....	HI 8581	Noggle, D. C., 18841 Topham, Reseda.....	CR 6-6412
Coker, B., P.O. Box 9843 - Sta. 3, Los Angeles.....	FA 5953	Osti, Rudy, 2450 Fairmount, E., Los Angeles.....	AN 4631
Colton, R. W., 1450 1/2 Barry Ave., West Los Angeles.....	AR 7-2373	Parker, F. J., 3633 Effie St., Los Angeles.....	CR 6-6412
Cooper, R. M., 8965 Lloyd, West Hollywood.....	CR 1-0911	Pennington, C. W., 9014 Harratt St., West Hollywood.....	CR 6-6412
Cox, Floyd W., 870 Larrabee St., West Hollywood.....	CR 5-4992	Perry, W. R., 837 Huntley Dr., West Hollywood.....	CR 1-4618
Cox, R. P., 713 N. Doheny Dr., Beverly Hills.....	CR 1-3653	Pusateri, A. J., 1822 Lucile, Los Angeles.....	NO 1-3632
Craft, James, 1922 Montrose St., Los Angeles.....	EX 5256	Rodgers, W. K., 2900 Walton St., Los Angeles.....	RE 1-1392
Cranford, Johnny P., 919 1/2 Westbourn St., Los Angeles.....	CR 5-1998	Schmitt, John H., 1822 Lucile, Los Angeles.....	NO 1-3632
Dalsell, C. C., 1442 Mahawk, Los Angeles.....	FE 3841	Schupback, R. V., 356 N. Gardner, Los Angeles.....	WY 9767
Davis, H. P., 843 Palm Dr., West Hollywood.....	CR 6-6412	Scott, R. R., 971 Palm Ave., Los Angeles.....	CR 6-6412
Davis, M. C., 520 So. Western Ave., Apt. 10, Los Angeles.....	FA 7498	Seide, R. G., 13902 Valerio St., Van Nuys.....	ST 0-1343
Dawson, M. W., 834 Larrabee St., West Hollywood.....	CR 5-5614	Servranckx, W. F., 5417 Pickford St., Los Angeles.....	WH 6140
Day, A. W., 1096 Superba Ave., Venice.....	Sta. Mon. 6-1070	Sharp, W. H., 2538 Eastlake Ave., Los Angeles.....	CA 0361
Deak, Theodore, 948 No. Western Ave., Los Angeles.....	HO 9-3851	Shea, A. J., 11480 Cumpsta St., North Hollywood.....	SU 1-0705
Dearborn, H. R., 848 No. Laurel Ave., Los Angeles.....	WY 4219	Silvey, E. J., 8804 Cranford Ave., Sun Valley.....	CR 6-6412
Dodge, Leonard, 9014 Harratt St., West Hollywood.....	CR 6-6412	Smith, S. B., 9014 Lloyd Pl., West Hollywood.....	CR 1-8340
Donnelly, O. J., 5453 Elmly St., Van Nuys.....	ST 5-1367	Sparkman, W. L., 854 W. 9th St., Los Angeles.....	VA 7782
Eaton, M. L., 8824 Yates St., Sunland.....	Florida 3-1743	Squires, L. R., 1017 So. Kingsley Dr., Los Angeles.....	DU 8-5474
Fippin, Don M., 404 N. San Vicente, Los Angeles.....	CR 1-0312	Stevens, L. N., 336-A W. Lexington, Glendale.....	CR 6-6412
Gabbard, James E., 18333 Gail St., Artesia.....	TORrey 5-1538	Storer, Jack, 8974 Norma Pl., West Hollywood.....	CR 1-7659
Gazeley, G. L., 1524 N. Lima St., Burbank.....	CH 8-6959	Sullivan, C. W., 1017 So. Kingsley Dr., Los Angeles.....	DR 0045
George, R. L., 10539 San Jose St., South Gate.....	LA 4069	Sweett, Fred T., 955 1/2 Larrabee St., West Hollywood.....	CR 1-6703
Giesegh, Carl, 9004 Dick St., West Hollywood.....	WE 5574	Thompson, J. R., 911 Westbourne Dr., West Hollywood.....	CR 5-8263
Gillette, J. B., 1329 Crenshaw Ave., Los Angeles.....	WA 3420	Triebwasser, J., 1429 W. 58th Pl., Los Angeles.....	TH 5538
Goldberg, Aleck, 857 1/2 N. Hayworth Ave., Los Angeles.....	CR 6-6412	Venable, A. D., 849 Clark St., West Hollywood.....	CR 5-1625
Griffin, A. L., 911 Wonderland Ave., Los Angeles.....	CR 5-4734	Wardy, W. A., 1742 No. Kingsley Dr., Los Angeles.....	NO 9592
Griffin, E. R., 8911 Cynthia, West Hollywood.....	EM 1-5475	Warnock, H. J., 1241 N. Sycamore, Los Angeles.....	HO 9-4944
Gravett, J. M., 833 Elwood, West Hollywood.....	CR 1-5923	Waseloff, James J., 321 So. Olive St., Los Angeles.....	CR 6-6412
Hagle, Glenn, 833 Elwood, West Hollywood.....	CR 1-5923	Weems, D. J., 316 E. 61st St., Los Angeles.....	AD 6175
Hallbrook, T. E., 839 Elwood, West Hollywood.....	CR 6-3445	Wendling, G. G., 15112 Huston St., Sherman Oaks.....	ST 4-8881
Hall, Roy L., 944 Hancock Ave., Los Angeles.....	CR 1-4625	Werner, Clarence C., 42443 Tujunga, North Hollywood.....	SU 1-8547
Hartley, A. J., 1608 W. 38th Pl., Los Angeles.....	AX 9877	Whitted, P. N., 5337 Willowcrest, North Hollywood.....	CR 6-6412
Hathaway, J. R., 528 N. San Vicente, West Hollywood.....	CR 6-6412	Wolff, Geo., 14011 Doventry St., Pacoima.....	CR 6-6412
		Yarbrough, P. D., 9018 Hargis St., Los Angeles.....	VE 8-4431

SUBWAY TERMINAL and WEST HOLLYWOOD



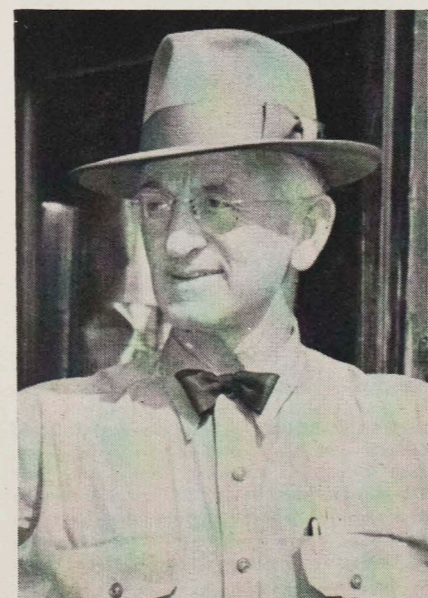
By Bill Newman

ON APRIL 1, Switchman Carl Giesegh of Gardner Junction en-trained for New York City to board a TWA Constellation for his former home in Stade, Germany, to visit his folks whom he has not been in 39 years.

Carl came to the U.S. on Jan., 1910, and took the oath of allegiance on March 6, 1918. He came to work for PE on April 20, 1920, as a Motorman. Since then he has worked as a Conductor and Motor Coach Operator, and for the past two years he has held the job as Switchman. He has great responsibility in keeping the Hollywood Line running smoothly.

Wedding bells rang on Sunday, April 3, at the West Hollywood Congregational Church, when Conductor R. E. Arnold and his bride, Barbara Anne Ackerman, walked to the altar to be joined in holy matrimony. The boys at West Hollywood join in wishing them a long and happy life together.

The boys at the Subway are wishing Subway Stationmaster Floyd L.



VISITS NATIVE LAND — Gardner Junction Switchman Carl Giesegh, who left April 1 for his home town of Stade, Germany, to visit relatives he hasn't seen in 39 years.

The Public Appreciates

NORTHERN DISTRICT

Conductors: R. L. Ellison, obliging and helpful; C. H. Jones, superlatively kind and polite; T. Montgomery, helping woman with two suitcases through traffic; J. Rice, "very fine and obliging always."

Operators: J. V. Garrett, smooth in starts and stops, careful, courteous; C. W. Knight, exceptionally courteous and pleasant; R. J. Miller, tactful and pleasant in the face of belligerency; J. W. Van Sickle, for returning a briefcase.

SOUTHERN DISTRICT

Conductors: A. D. Fortna, courteous in assisting with baggage; J. E. Harper, always polite and cheerful; C. B. Huscroft, commended in Matt Weinstock's column for his "good morning" and his "thanks"; W. P. Nutter, courteous and helpful; B. F. Thompson, courteous and helpful.

Operators: E. C. Giffin, gives "favorable impression of PE service"; V. C. Prettyman, courteous.

WESTERN DISTRICT

Conductors: J. N. Bellone, courteous despite passenger's belligerency; W. G. Burnham, superlatively courteous and competent; R. L. Birchfield, courteous, kind, exceptionally able, particularly helpful to elderly sick lady; E. H. Dickerson, courteous, efficient; H. L. Miller, calling streets distinctly, courteous, modest; L. F. Monday, helpful in recovering purse; E. D. Sale, alert and careful to avoid accidents, and courteous; B. F. Thompson, helping two elderly ladies onto his bus; E. P. Verret, never too busy to be courteous to all.

Nuzum a lot of luck with the brand new home he purchased in the small town of Puente. The place is off Valley Blvd. near Five Points. Any of the boys are invited to drop in at any time. The writer is glad that Nuzum finally got his wish. Now we won't have to listen to him squawk about how rotten it is to live in a big city.

To study commerce at the University of Queensland for three years, Conductor David Slatkin of West Hollywood sailed from Vancouver for Australia on March 24 with his family — including his wife, Joyce, daughter, Diane, 4, and David, Jr., 1 1/2.

They also took a new washing machine, because such articles are scarce in the land down under.

Motorman D. C. Noggle, unusually courteous to LATL Operator at 2nd and Hill Sts.

Operators: N. J. Besser, thoughtful in returning purse; O. M. Blanks, for returning a lost envelope; C. R. Childs, courteous and efficient; Harry Daigle, always pleasant in answering inquiries and obliging in waiting for latecomers; E. H. Dickerson, valuably assisting out-of-town passengers; Walter Goldman, waiting for lady running for bus; I. V. Hoobler, unusually courteous to LATL Operator; H. L. Ophus, outstandingly courteous to all; S. Rona, courteously assisting passenger without funds; W. F. Smith, assisting in recovering purses on two occasions; T. R. Sparkman, always courteous and helpful, careful to announce stops; J. M. Turchin, "a pleasure to ride with."

MOTOR TRANSIT DISTRICT

Operators: D. L. Anderson, courteous, congenial, smooth in starting and stopping; J. A. Bradley, "A-1 Operator," courteous to passengers; E. W. Byrd, for alertness which prevented an accident; W. I. Collette, cheerful even under unpleasant conditions; R. H. Cruson, courteous to lady who boarded wrong coach; S. F. Dispennette, kind and helpful in assisting elderly gentleman to his destination; V. E. Durden, pleasant in answering inquiries; C. C. Paden, unusually thoughtful and considerate; G. E. Serres, courteous and efficient; F. J. Widman, cheerful, patient, polite; E. L. Worsham, courteous and efficient, according to letter signed by six passengers.

It's a homecoming for Mrs. Slatkin, whom Dave met and married in Australia after a three-week courtship. She's a native of Twodgoolagah, (you pronounce it!) Queensland. The couple met during Dave's three-year stint in the Navy. He saw service in the Solomons, New Guinea, the Caroline Islands, and Okinawa.

A native of Gastoria, N. C., Dave leaves PE after two years of service, but he expects to return to the States after his studies are completed at the University of Queensland. West Hollywood men wish him the best of luck.

With regret we report the passing on Feb. 18 of the wife of Conductor J. W. Saunders.

MACY STREET TERMINAL

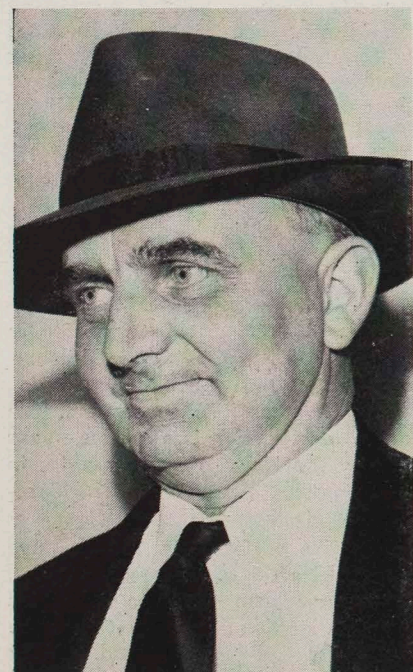


By
**Ted
Harrison**

Well, folks, Spring is here again and it seems like all Macy talks about is bumps but why bore you with that, because by the time you get to read it all the bumpees will be bumped again. Why even the Terminal Foreman hardly knows where to find half his men!

Here is some real news; in fact, there are two items of interest that Conductor Archie Bryson figures in. Some time ago Archie and his wife went to an auction, and first thing they knew they were high bidders on something rather unusual. In fact, they were on their way home with a live PIG! Guess that's "bringing home the bacon."

Item Number 2: Archie was driving up San Pedro St. when he heard a woman shouting "Stop that man." Getting out of his car, he was in time to stop a man carrying a brief case. The man immediately passed the brief case to another man who ap-



HERO—Archie Bryson, Macy Conductor who by simulating a gun with his ticket punch held a would-be robber at bay till police came.

peared to be a companion. Archie turned his attention to the second man. Putting his hand in his pocket, Archie simulated a gun and ordered the man to give up the brief case. By this time the police had arrived. They arrested one man and later caught the other. After the dust had settled it was discovered that our hero Archie had stopped a holdup and had been instrumental in catching two badly wanted men. He was congratulated by the police as well as by the woman who had been saved the loss of cash collections totaling more than \$1500.

We are going to miss "Myrt" and Lillian, operators of the Macy St. Cafe, which has had a change of ownership. We all wish the new owner lots of luck as he takes over. It seems he has been in the restaurant game for 35 years. We trust he'll keep us all supplied with good coffee.

Conductor and Mrs. Don Edmunds started the new year with the arrival of Judith Allen, who weighed nine pounds and ten ounces when she was born at 6:10 a.m., Jan. 2. Congratulations from the Macy St. bunch.

Crowley Lake Opens For Fishing May 1

CROWLEY LAKE, California's great trout-fishing spot, home of the state's biggest trout, opens May 1 and will provide top sport for anglers. Located in the High Sierras, 300 miles from Los Angeles, the 10-mile-long reservoir is operated by the Los Angeles City Recreation and Park Department.

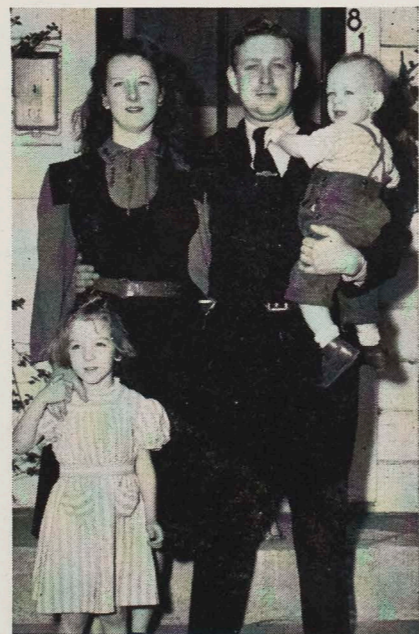
Acceding to requests of sportsmen and the Los Angeles City Recreation and Park Department, the California State Fish and Game Commission has extended the fishing season to July 31 this year, instead of closing the lake on July 15 as in other years.

The popularity of Crowley Lake with anglers was strikingly shown by the way in which all reservations for rental of city-owned inboard motor-boats and rowboats for opening days of the season were snapped up by eager fishermen within a few hours after the Recreation and Park Department opened its reservation office on Marsh 14.

To give all fishermen an equal chance on a "first-come, first-served" basis, the Recreation and Park Department required that reservations for boats for the first week of the Crowley season be made in person. Reservations for subsequent dates



FATHER, SON, FISH—West Hollywood Trainman A. B. Bogartz, his son Stewart, and the horseshoe kelp (that's what they said it was) they caught off San Pedro last Feb. 4.



AUSTRALIA-BOUND—West Conductor David Slatkin, with his Australian-born wife, Joyce, their 4-year-old daughter, Diane, and their 1½-year-old son, David, Jr., snapped by the photographer shortly before they left for Australia, where Slatkin will study commerce at University of Queensland for three years.

may now be made by mail as well as in person, at the Recreation and Park Department, Room 225, Los Angeles City Hall, telephone MI-5211.

Courtesy of Drivers on Riverside-Arlington Line Hits Front Page

THE COURTESY of the Riverside-Arlington Motor Coach Operators made the front page of the Magnolia Center News, of Riverside, on Thursday, April 7. Under the title, "Courtesy Springs from a Kind Heart," appears the following:

"Let's begin this story with the Riverside-Arlington bus drivers. Their constant cheerful courtesy to their bus riders is outstanding. One day the bus I was on stopped at an unmarked corner. The driver had stopped for an elderly colored couple, the man badly crippled. He helped the new passengers up the steps, then waited until they had found seats before he started the bus.

"Another morning the bus stopped in the middle of the road and the driver got out to pick up a baby pigeon that had fallen out of the big pepper tree. He put it carefully on the lawn where it would be safe from the traffic surging along Magnolia Avenue.

"For the regular bus riders, there's always a cheerful greeting and they are especially kind to little children who are traveling alone."

WHO AM I?

YOU HAD BETTER take good care of me.

Perhaps you don't think much of me at times. . . .

But, if you were to wake up some morning and realize you didn't have me, you would start that day with an uneasy feeling.

From me you get clothes, food, shelter and such luxuries as you enjoy.

If you want me to, I'll get you an eight-cylinder automobile and a fine home, but I am exacting.

I am a jealous mistress.

Sometimes you appear to scarcely appreciate me at all.

You make slighting remarks about me and neglect me. Considering the fact that you not only need me for the material things of life, but spiritually as well, I wonder that you slight me as you do at times.

What if I should get away from you? Your happiness would flee, for a time at least.

Your friends and your wife, depending on what sort of fellow you are, would worry . . . and your bank account would dwindle.



DOWN AROUND THE HARBOR

AT FAIRBANKS GARAGE—Upper picture, left to right are Norman Holcomb, Long Beach-Riverside Line; Loren E. Wise, Long Beach-Huntington Park Line; Robert E. Dreyer, Long Beach-Riverside Line; and Charles Mitchell, Foreman, Fairbanks Garage, Long Beach. Lower picture, Luceil Howard, left, and Lillie Abernathy wash one of the buses used on the Long Beach-San Pedro Motor Coach Line, which replaced the rail line Jan. 2.

So, after all, I am pretty important to you.

Cherish me . . . take good care of me and I will take good care of you.

You ask who I am?

I AM YOUR JOB!

—Voice of Century
Century Metalcraft Corp.

AT SAN PEDRO STATION, Agent J. M. McQuigg and Operator H. H. Morris discuss approvingly the improvement in passenger business since the Long Beach-San Pedro Line was converted from rail to bus. They report that people seem to like the buses better than the cars.



PACIFIC ELECTRIC ACCOUNTING DEPARTMENT ORGANIZATION CHART

PACIFIC ELECTRIC RY. CO.

JOHN J. SUMAN



AUDITOR

IMMEDIATE BUREAU
6

ASSISTANT TO AUDITOR

ASSISTANT TO AUDITOR

ASSISTANT TO AUDITOR

ASSISTANT TO AUDITOR



L. M. BECKER



G. S. WATSON



E. H. UECKER



R. C. HOLLINGER

FREIGHT AND CAR SERVICE ACCOUNTS BUREAU
70

DISBURSEMENTS ACCOUNTS BUREAU
29

SPECIAL ACCOUNTANT TO AUDITOR
1

MISCELLANEOUS ACCOUNTS BUREAU
18

AUDITOR'S SECRETARY
1

PASSENGER ACCOUNTS BUREAU
53

PAY ROLL ACCOUNTS BUREAU
56

SUPERVISORY
4

SPECIAL ACCOUNTANT
1

INTERLINE FREIGHT SETTLEMENTS
9

GOVERNMENT FREIGHT ACCOUNTS
2

AGENTS FREIGHT REPORTS
4

FREIGHT CLAIM ACCOUNTS
3

REFRIGERATION ACCOUNTS
1

UNCOLLECTED ACCOUNTS
2

RATES AND DIVISIONS
11

FREIGHT STATISTICS
1

CAR SERVICE ACCOUNTS
6

SORTING, FILING AND MAIL
4

TYPING
11

CALCULATING
11

SUPERVISORY
3

TAX ACCOUNTANT
1

SPECIAL ACCOUNTANTS
2

PROPERTY AND EQUIPMENT
2

MATERIAL ACCOUNTS
3

STATISTICAL
3

ACCOUNTS PAYABLE
3

BILLING
1

TYPING
3

CALCULATING
4

DOCUMENT REGISTRATION
1

FILING AND MAIL
3

SUPERVISORY
3

SPECIAL ACCOUNTANT
1

CHIEF TRAVELING AUDITOR & TRAVELING AUDITORS
4

BOOKKEEPING
1

CONTRACTS AND AGREEMENTS
2

BILLS COLLECTIBLE
3

STATION AGENTS ACCOUNTS
1

PAID DOCUMENTS
1

ACCOUNTS ANALYSIS
1

GENERAL
1

SUPERVISORY
3

CONDUCTORS ACCOUNTS
27

AGENTS ACCOUNTS
2

TICKET STOCK
3

PASSENGER MILEAGE
3

SORTING
2

CALCULATING
9

PAY ROLL
1

TYPING
2

FILING
1

SUPERVISORY
4

SPECIAL ACCOUNTANTS
2

TIMEKEEPING
22

DEDUCTIONS
3

GROUP INSURANCE
1

STATISTICAL
3

TYPING
5

CALCULATING
10

PART TIME CALCULATING
4

SORTING, FILING AND MAIL
2

ACCOUNTS OF THE FOLLOWING NAMED COMPANIES ARE MAINTAINED IN THIS OFFICE

Pacific Electric Railway Company
Pacific Electric Land Company
Los Angeles Union Terminal, Inc.
Los Angeles Public Market Company
Union Terminal Warehouse

JNO. J. SUMAN
AUDITOR

January 1, 1949

RECAPITULATION	
BUREAU	NUMBER OF EMPLOYEES
Immediate (Including Auditor)	7
Freight and Car Service Accounts	70
Disbursements Accounts	29
Miscellaneous Accounts	18
Passenger Accounts	53
Pay Roll Accounts	56
	233

LONG BEACH FREIGHT HOUSE



By
Jack
DeLaney

WE ARE PLEASED to submit picture of little Kay Frances Licata, 18-month-old daughter of Mr. and Mrs. V. J. Licata. Quite a fine-looking girl. Father Si says she wants to be a movie actress. The proud daddy is employed here as Yard Clerk and is an old-time railroader.

Bill Lawrence, Revising Clerk, has been passing out cigars for the past week all on account of his brand-new baby boy who arrived March 13. Bill says he can say Choo Choo now, so expects him to be a railroad man when he grows up.

Allen Taylor, Freight Clerk, is with the Naval Reserve, taking thirty days leave to see the Islands. From cards we have received, "The General" says he is having a grand trip.

Fay Stirn, Mr. Clark's Secretary here, just can't lose. If there are any prizes in circulation, she will win one. She won a beautiful bouquet of flowers few nites back at the Long Beach Traffic Meeting.

Madeline ("Midge") Sheffield is back to work as Freight Clerk after an absence of three months. Midge says she is all right now. Just bring on the work, and she will do it.

Chuck and Mrs. Baldwin, who operate the auto unloading service here, just returned from an extended vacation (and in their new car too) taken in Florida. They say old California looked mighty good to them when they got back.

Mr. and Mrs. Eddie Shaffer had their twin daughters, Eileen Sue and Maureen Sue, nine months old, down to the station few days ago. Two of the prettiest little girls you will ever see. Eddie is an Engineer operating one of our diesel engines here.

Brakeman M. W. ("Mike") Long has just returned to work from his vacation. Mike had a grand vacation, he says. While his wife was attending a convention in Los Angeles, he had to stay home and take care of their dog. A regular dog-sitter, says Mike.

Trolleyman R. C. ("Specks") Dyson is on a diet, trying to lose some weight, but his appetite gets the best

of him. Speck says he has to have his regular course of ice cream and apple pie every day.

Brakeman C. T. ("Chicken") Miller is open for suggestions on building a high wall around his home at Sunset Beach to prevent it from sliding into the ocean. Piling and cement has been suggested, but a dollar and a half is too much for that kind of construction, says Chicken.

Dorothy Hecox is now working on our telephone switchboard relieving Wayne Downing, who has resigned. Dorothy hails from St. Louis.

May McKane left April 10, to be gone until May 10, for Pittsburgh, Pa., to be with her new granddaughter.

Fred Boren, General Ticket Clerk, has bid in a night ticket job. Jack Frost bid in Fred's job. Jerry Ferris has left Long Beach Ticket Office and is now selling tickets at Bellflower. Harold Fuqua also has left Long Beach and is now working at the Compton Station. Norval Knox is taking over Harold's Long Beach job.

Lydia Sheldon, Ticket Clerk, says things are humming around the ticket office. She and Norval are kept busy all the time passing out the tickets and looking after the general welfare of the customers.

More Power to You

Safety begins in the head
Where knowledge is power,
Teaching how men can be led
To protection every hour,
So if you are charged with the chore
Of ensuring that none will be dead,
Keep repeating o'er and o'er
That SAFETY begins in the head.

— Canadian Pacific On Guard



FUTURE MOVIE ACTRESS — Kay Frances Licata, daughter of Yard Clerk V. J. Licata of the Long Beach Freight Station.

LOS ANGELES TERMINAL FREIGHT STATION



By
Suzanne J.
Smith

WEDDING BELLS rang for Bellen Bernal, Loran Ice, Preston Jones (who married Marvel Millhouse of Western Freight Assoc.), and Russell Fawley (who married Eleanor Ahumada, daughter of Enrique M. Ahumada, Foreman at State Street). The LATFS girls gave Eleanor a shower and she received numerous gifts, including an iron, toaster, and set of dishes. . . . Our esteemed retired Station Supervisor, H. E. Foskett, is the new manager of the Terminal Club (effective February 1, 1949), and is very happy in his daily meetings with his railroad friends. . . . Raymond Smith bid in a Service Director job, and Conrad Heath is doing claim work now. . . . Seymour Lipschultz and Arthur Tellechea are fighting the battle of the "bow tie vs. windsor knots". . . . John W. Boehme was hospitalized due to an injury. . . . Frederick Leininger blows out the "fluorescent" lights at the end of his job each day. . . . Preston Jones works in El Segundo. . . . Loran Ice has a "place" for his bride in Artesia. . . . Leonard Hampton is working the routine office job while Ray Krafft works in San Bernardino. . . . Vacation time has rolled around for Lester Clark, Kenneth Tweston (who will fix his car), and Marvin Coutts (who is spending his vacation with his mother who came from back east to visit him). . . . Russell Peterson has double trouble since his two sons have the chicken pox and keep him awake nights. . . . Harold Phillips is on leave since his sick spell when he was confined at St. Vincent's. . . . Ara M. Beekman visited us from the Harbor at Wilmington and says he still likes the "ocean breezes" instead of the "smog". . . . Charmaine Gauthier really looks sharp in her pair of modern-type glasses. . . . Reba Weathers has an up-sweep hairdo one day and a "shortie" the next. . . . Ruth Wilson displaced to Hollywood and Clarence Quigley displaced to L. A. Freight, with Wm. Hostetter going to El Monte. . . . Alice Fairbanks and Barbara Uecker are current "newcomers" to L. A. Freight also. . . . Mary Breese is all a-glitter in a white rhinestone blouse. . . . John J. Stanton

bid in a Yard Clerk job at El Segundo Yard. . . . Rudell Fugate was assigned a job as Rental Clerk in the Land and Tax Department. . . . Eleanor Fawley says she had no morning coffee account of the pipes being frozen and no orange juice account of the refrigerator being too cold. . . . We extend Elmo Hall our sympathies on the death of his mother. . . . Bea Leavitt nursed a sore leg when she accidentally fell off the back porch. . . . Miguel Escoto made a trip to San Francisco due to a death in the family. . . . Ruth Fuerstenau and Dorothy Hill are on leaves of absence. . . . Jack Green gives us the news from the "Village" (namely 6th and Main), as he delivers the mail. . . . Fred Fluss looks good in his Army uniform. . . . Seymour Lipschultz attended the Credit Union Convention in Sacramento. . . . Margaret Seymour returned from her sick leave. . . . Barbara Jean Buszek was born on Feb. 13 to Joe Buszek and the Missus, and though Joe works elsewhere now, he had to tell us the Big News. . . . Theresa Engstrom is very active in the Women's Traffic Club of Los Angeles. . . . Jim Boswell, Joyce Wagoner, and Mary Breese are the first from the Freight House to join the PE Glee Club. Who'll be next?

HOW TO LIFT

WHEN LIFTING heavy shipments of material, employes should always keep the following in mind:

1. Stand close to the object to be lifted.
2. Set feet firmly in order to have solid footing.
3. Bend knees in a crouched position.
4. Keep back perfectly straight.
5. Have a firm hand grip.
6. Raise slowly by straightening the legs, thereby placing the weight on the strong leg muscles, rather than the weaker back muscles.
7. When two or more employes are lifting a heavy load, all concerned should have a clear understanding of the moves to be made.

When lifting, as in everything else, the right way is always the best and the safest way. The human back was not intended for use as a derrick, and by following the suggestions shown above, painful back strains can be prevented.

'Miss Wilmington' Title Won by HB Man's Baby

JESSE O. GAYER, Assistant General Yardmaster on the night shift, Harbor Belt Line, has a double claim to fame.

He's winner of a Diaper Derby, and he's the father of "Miss Wilmington," — his ten-months-old daughter, Annie Frances, whose diaper he can change faster than you can swing a brake club.

In a baby contest sponsored by the Pythian Sisters of Harbor Temple No. 62 for babies from seven weeks to 5½ years of age, blue-eyed, happily gurgling little Annie, one of 256 contestants, won more applause from the audience of several hundred than did any other baby. The applause won her the "Miss Wilmington" title.

To become eligible for the contest, Annie and the other entrants had to take part in a beauty and health contest, also sponsored by the Pythian Sisters. In the beauty show she won first place for her age group, and in the health contest, the examining physician gave her a 100 per cent rating.

SUPREME QUEEN

As the result of her showing in the beauty and health contest, she received the title of Supreme Queen. (There was also a Supreme King.) She was dressed in royal purple trimmed with ermine for the coronation ceremony on the occasion of her queenship, and was presented a fine trophy.

She's also the possessor of an equally fine trophy for winning the title of "Miss Wilmington," an honor of which her parents are especially proud.

Father Gayer has been with the Harbor Belt Line for 12 years, and started his Pacific Electric service May 3, 1929. For the past two years he has held the post of Assistant General Yardmaster, and works nights at Pier "A," East San Pedro, and Long Beach.

Annie hasn't been brought up strictly according to rule. She has ice cream and cake when she's in the mood, and her mother doesn't believe in canned baby food, which Annie doesn't like anyway. Instead, Annie likes steak and chop bones. She eats only when she's hungry — and she's never had any illness except a slight cold. Pediatricians will undoubtedly shudder to learn that there are two dogs, several cats, a canary, and half a dozen other pets in the house — with all of which Annie Frances has an intimate acquaintance.

The Gayers live at 1261 Island Ave., Wilmington.



CHAMPS — Harbor Belt Assistant General Yardmaster Jesse O. Gayer, winner of a Diaper Derby, and his 10-month-old daughter, Annie Frances, winner of "Miss Wilmington" and "Supreme Queen" titles in Wilmington baby contest. In the upper picture Annie's in her coronation robes; in the lower, she's just — irresistibly — Annie.

The Magic of America

QUARTS OF MILK ONE HOURS WORK WILL BUY

1/2 Qt. 3 Qts. 6 Qts.

in RUSSIA with Communism in ENGLAND with Socialism in UNITED STATES with Free Enterprise

Recall "Aunt Michael"? She Remembers You!

REMEMBER "AUNT MICHAEL"? She's the lady who, with her little nieces, Judy and Nora, and her even smaller nephew, Michael, wrote such a nice letter commending PE Trainmen last year that we put a picture of the four of them, boarding a train at Compton, on the cover of the July-August, 1948, cover, along with Conductor J. D. Blake.

We've heard from her again — this time from Norfolk, Virginia. And again she sends her deep appreciation for the happiness brought her and the children by helpful PE employes. The letter, dated March 7, and addressed to the Editor, reads in part as follows:

"Almost a year has passed since you kind folks of the Pacific Electric Railway honored my little nieces and nephew, Judy, Nora, and Michael Sage Davis and myself, "Aunt Michael" (Sara G. Shriner), with our pictures in your July and August Pacific Electric Magazine. . . .

"Your magazine and the pictures have traveled with me everywhere I have been since last July, and have been exclaimed over and admired by many in crossing the continent and up and down the east coast. I cannot tell you how grateful I was to receive the copies which I shared with the children's mother. Each time I have shown them, I have lived again the happy hours of riding to beaches, parks and places of interest with the little ones on the P. E. Lines. The magazine is a fine production, and the pictures were beautifully done. I thank you again for the kindnesses, the comforts, and the many courtesies



AUNT MICHAEL (Miss Sara G. Shriner), the children, and Conductor J. D. Blake. Children, left to right, are Judy, Michael, and Nora.

which were extended to Judy, Nora, Michael and me when we went ajaunting. You just cannot know how much it meant to me. . . .

"Thank you and Mr. Marler again for your charming letters. I received all three forwarded from Compton. May I apologize for not answering them, and say that my intentions were to do so each day, for they made me very happy. I plea work, travel, new scenes and adjustments, which occasioned delay in many, many letters to both old and new friends. Will you please extend my greetings and good wishes to Mr. Marler and Mr. Rommel*. It was very easy to see why the spirit among your employes is so generous in thoughtfulness and

*Photographer who took the pictures.

Vital Statistics

DEATHS

February 21, 1949, to March 20, 1949

NAME	OCCUPATION	Died	Group	
			Insurance	Mortuary
Clark, Herbert	Retired Trainman	2-23-49	No**	Yes
Sharpe, Fred H.	Retired Lineman	2-28-49	Yes	No
Collins, Sam E.	Janitor	3- 1-49	Yes	No
Burgess, Harry L.	Motorman	3- 4-49	Yes	Yes
Santoscoy, Joseph	Retired Car Cleaner	3- 5-49	Yes	No
Roberts, William G.	Retired Car Repairer	3- 5-49	Yes	Yes
Carlsen, Louis	Motorman	3-17-49	Yes	Yes
Sanchez, Bonifacio	Retired Laborer	3-19-49	Yes	No

EMPLOYEES' WIVES' DEATH BENEFIT FUND

NAME	Died	Wife of	Department
Bagby, Helen	3-17-49	Victor Bagby	Transportation

**Employee declined to accept Group Insurance.

friendliness. They have such fine men with whom to work and to use as examples.

"With all my best wishes to you and my deepest appreciation for the happiness you brought to us all, and the friendliest of feeling for the Pacific Electric,

"Sincerely,
"SARA G. SHRINER
"(Aunt Michael)"

Mecca Gives \$1,500 For Cancer Control

BY PRESIDENTIAL, Congressional, and local proclamation, April of each year is National Cancer Control Month. Sponsored by the American Cancer Society, the only national cancer group so organized as to conduct its program of cancer control on a national, state, and local level, this month is a time when PE employes as well as all other loyal U.S. citizens are asked to donate money to help in the fight against cancer.

Ranking as the No. 2 killer in the nation, and causing the death of 15 Los Angeles County residents every day, cancer must be controlled. Experience proves that it can be controlled and cured if caught in time, and the American Cancer Society is spending millions for education and service to the public, and for research.

Funds raised within Los Angeles County support the following activities and services:

Seminars and refresher courses for physicians and dentists.

A mobile cancer educational unit—a 22-foot house-type trailer, which visits communities, fairs, expositions, schools and colleges and civic gatherings.

Speakers, films, industrial bulletin board material, educational literature—all of which presents the "seven danger signals" of cancer and the value of early detection.

Research—currently being conducted at the Los Angeles County General Hospital, UCLA, USC, Cal Tech, and the College of Medical Evangelists on funds provided by the American Cancer Society.

Diagnostic tumor boards, composed of panels of Cancer Specialists who serve without compensation. Sixteen of the Boards have been formed at the major hospitals of the County, and they function free of charge.

Visiting Nurse Service, which last year made over 3,000 home calls upon victims of cancer, free of charge.

Bandages, drugs and other types of medication used in cancer treatment.

Financial assistance for those ineligible for County care and yet unable to meet the expenses of cancer care and treatment.

In 1948, \$241,000 was raised in the County, at a cost of \$9,997.19 — THE LOWEST COST FOR ANY CAMPAIGN OF THIS SIZE AND MAGNITUDE IN THE HISTORY OF THE COUNTY, ACCORDING TO

Claim Agent Doherty Weds Alice Kadisch

IN THE APPROPRIATE SETTING of the Wee Kirk o' the Heather, Forest Lawn, the wedding of Claim Agent B. F. Doherty and Alice B. Kadisch, a native of Scotland, was celebrated on Saturday, April 2, at 5:30 p.m.

As is well known, the Wee Kirk is an exact replica of the little church where Annie Laurie used to worship in Scotland. The stained glass windows of the Wee Kirk picture the story of the Scottish lass whose beauty is extolled in the song which bears her name as its title. It was Mrs. Doherty's wish to be married in this church.

After a honeymoon at Laguna, Mr. and Mrs. Doherty returned to make their home at 317 1/4 Columbia Ave., Los Angeles.

Mr. Doherty has been in PE service for four years. Mrs. Doherty is the assistant manager of the Ambassador Hotel Coffee Shop.



FOR GOOD FORTUNE, Mr. and Mrs. B. F. Doherty sit in the Wishing Chair at the Wee Kirk o' the Heather just after their wedding.

SPRING FEVER

By Frank O. Haymond, Jr.
Supervisor of Instruction and Safety

SOUTHERN CALIFORNIANS this year welcome Spring — that time of the year when the sun rises earlier and sets later, when the grass becomes greener, and the flowers begin to bloom. It is the time of the year when some adults feel a greater urge toward activities like painting their houses or planting their gardens.

There are individuals who go along month after month, year after year, undisturbed by changes. And then there are others who are afflicted by a let-down feeling we call spring fever. Spring fever encourages daydreaming, which has no place on the railway. No matter what job it is, as Operator, Motorman, Engineer, Conductor, Brakeman, Machinist, Car Repairer, Painter or Freight Clerk, no one can afford to let down or daydream while on the job. Dreams last but seconds but accidents occur in seconds. No one can spare the time.

When on the job it is necessary to devote attention

to the work at hand. Alertness is the word. Whether operating a coach or car, moving about cars, or in the vicinity of tracks where moving equipment can be expected at any time, alertness is vital to the preservation of life, health, and property.

Home is no exception to this recognition of proper protection. It is a known fact that more accidents occur in and about the homes of America than in any other surroundings. Ladders, steps, slippery floors, electrical appliances, washing machine wringers, cleaning fluids, improperly placed drugs and insecticides, to name a few, should all be given due respect for their accident potentialities. When an employe suffers injury and loss of time by reason of an accident occurring at home or off the job, it is as much a matter of concern as when the employe is injured on the job. There can be no relaxation of safety.



Don't let the dreamy signs of Spring
Make you a lazy, droopy thing.
You can't afford to get Spring fever!
Pep up, now! Be an eager beaver!



MACY UPHOLSTERER HONORED—John Hozman, who has been with PE since 1928 as an Upholsterer, received some beautiful gifts from his colleagues at Macy St. Saturday noon, April 2, a day marking not only his 70th birthday but also his retirement. General Foreman R. L. Mankins spoke briefly and appreciatively of Mr. Hozman's rec-

ord of long and faithful service before presenting him his gifts, which included an electric razor, two sport shirts, a Stetson hat, socks, and a pair of hedge shears. Car Repairer Vernon B. Williams also spoke briefly. Mr. Hozman plans to rest awhile and work on his home. Many employes crowded around to admire gifts, bid farewell.

MECHANICAL DEPARTMENT North and South Districts



By
R. P.
Murphy

SAFETY AND GOOD HOUSEKEEPING go hand in hand to make the day's work safer, more pleasant and more enduring. The Safety Committee: F. Phlaf, San Pedro; J. Giberson, 6th & LA Yard; W. Strouse, Long Beach; R. Taylor, Watts Car House; E. Champagne, Macy Repair Shop; E. Feldstein, Pasadena Car House; J. Nunn, Macy Car House. The Good Housekeeping Committee: At Macy Repair Shop: Arthur P. Groftholdt, Andrew J. Campbell, Albert A. Carter, John W. Grudziadz, Daniel Madrigal, Jr., and Dave A. LeFlores; at Macy Car House: L. Otterstedt, R. John, S. Beck, G. Romo, T. Garelli, M. Boyd, and V. Nelons. The work they are doing is greatly appreciated by our General Foreman, R. L. Mankins, who takes a great deal of interest in all things, especially safety.

J. L. Santoscoy, retired Car Re-



CLOSE-UP—Mr. Hozman, left center, admiring his new Shavemaster. Surrounding in front row are, left to right, Vernon B. Williams, Frances Grady, Tony Margiotta, Avery Andrews, Alfred Penwell, Alberta Williams, and General Foreman Roy L. Mankins.

pairer, Watts Car House, passed away the latter part of February. He was well known at Macy Car House, Macy Repair Shop and Watts Car House.

Appreciation to W. G. Wooton for the work combating delinquency that he is doing through his show productions where he uses only young people. More power to his efforts, and hope for continued success. (See page 22.)

Television is beginning to take hold in a big way among our fellow employes. A. J. Andrews, Wm. R. Tingler, and Irvin E. Mankins have

installed sets and all of them just can't say enough for them. Irvin says that at any time anyone who may wish to join him in his hobby of watching plenty of good shows can do so. He says he might throw away his guns and stay at home. Wouldn't that be something!

Harry Pearson and Gus Downing have gone into the big shiny automobile business in a big way. A Studebaker is the pride and joy of Harry and his wife. Gus has a Pontiac and one of these days he will bring it around and give us a look.

Vacation time is fast approaching and with these new cars plenty of country should be covered this summer.

MACY REPAIR SHOP

Enterprising horticulturists of Macy followed Geo. Washington's example of good farming. They spent his birth date in their gardens. Feb. 22 also had special significance in the M. C. Hernandez family: it was the birthday of Mrs. Hernandez.

Car Repairer Frank Bickley had an early vacation beginning Feb. 7.

Car Repairer and Mrs. Emil Schmelzle had the misfortune to have a vacation trip interrupted by Mrs. Schmelzle's sudden illness.

During March, Pipe Fitter Martin F. Whalen spent one of the annual two weeks attending to business interests.

Ask John W. Grudziadz about his playtime trip to Palm Springs.

The smart new Packard at Macy belongs to Machinist Dick Young, while Electrician Guy Fess has recently acquired a Buick.

Spring home improvements noted—new exterior painting by Bill Sadler and new interior decoration by Richard Humphrey.

Congratulations to Gracie, daughter of Mr. and Mrs. Clifford Martin, on her graduation from Alhambra High School and her entry to L.A. City College.

Norma, daughter of the Arthur P. Groftholdts, is the happy owner of a new flute.

Joyous wishes to Mr. and Mrs. Albin Danek. Wed 30 years on March 9, this couple reports that their romance retains all of its early sparkle.

Jimmie Butcher completed five years of PE service March 22.

Fortunate to receive television sets on their birthdays Feb. 28 and March 19, respectively, were Mrs. Huemerich, wife of Leader John J.; and Mrs. Courtney, wife of Thomas F.

The impressive safety button is worn by E. L. Champagne.

In the interest of "good taste" we mention country style chicken cooked in a new pressure cooker for Husband Abe by Mrs. A. E. Gregory.

FRIENDLY SPIRIT

Everywhere you go around the West Hollywood premises, a noticeably friendly and cooperative spirit prevails. Morale is high, and one clear evidence of this fact is the pride with which employes in the Repair Shop point to a sign telling the world that they are 100 per cent members of MECCA.

MECHANICAL DEPARTMENT Western District



By
Milton R.
Clark

F. E. GEIBEL, Superintendent of Equipment, retired April 1. Our sincere best wishes for many happy, healthful years of retirement.

E. A. Stevens succeeds Mr. Geibel. We all extend to him our hearty congratulations and our loyal best wishes.

Tom Green reports that there were no personal accidents on the Western District during the months of January, February and March. This is a splendid record for the start of the new year. Both the Safety Committee men and employes are to be commended. Let us all try to keep this good record for the rest of the year.

Roy C. Helliwell retired Jan. 10 after 23 years of service in the Mechanical Department on the Western District. Before going to work for PE Roy worked as a salesman, farmer, and motion picture extra. In 1915 he joined the Canadian Army, went overseas with the 204th Battalion as a 2nd lieutenant, and was discharged in 1919. Roy was given a two-suitcase as a retirement present by his many friends, who wish him many happy years of rest and pleasure.

We extend our deepest sympathy to Joe Wilcomb, whose brother passed away Feb. 21; to William Richard, whose wife passed away Feb. 11, and to Edward Bray, whose father passed away March 8.

Frank Noel has returned to work after being off for three months on account of illness.

Lillian Fuller is confined to the Santa Fe Hospital on account of illness.

V. E. Connell recently made a trip back to Oklahoma to see about his property there.

A. F. Cash is sporting a new pair of horn-rimmed glasses.

Bob Byrd and Walter Benson are both having dental work done and are restricted to soup for a while.

Art McCauley says everything is quiet now that "Mutt" McGinnis has bid in a job at the shop.

Harry Broersma says that he is the best Painter at West Hollywood. If you don't believe it, just ask him.

Shrine to Build Local Hospital; Your Gift Of Money Is Needed

VERNON B. WILLIAMS, President, Pacific Electric Masonic Club, announces that contributions of money toward the erection of a hospital by Al Malaikah Temple, Los Angeles, will be welcomed and will be used for a worthy cause.

All employes are aware of the current and increasing shortage of hospital facilities in Los Angeles. The proposed hospital, open to those of any race or creed who are unable to pay for services rendered, is an important step toward the fulfillment of the need for more hospitals in this locality.

Make your check or money order out to Al Malaikah Temple and send to Mr. Williams at Macy Car House. You will receive a receipt and your name will be placed on the Shrine's roll of honor, listing those who have helped build the hospital.

SYSTEM GARAGES

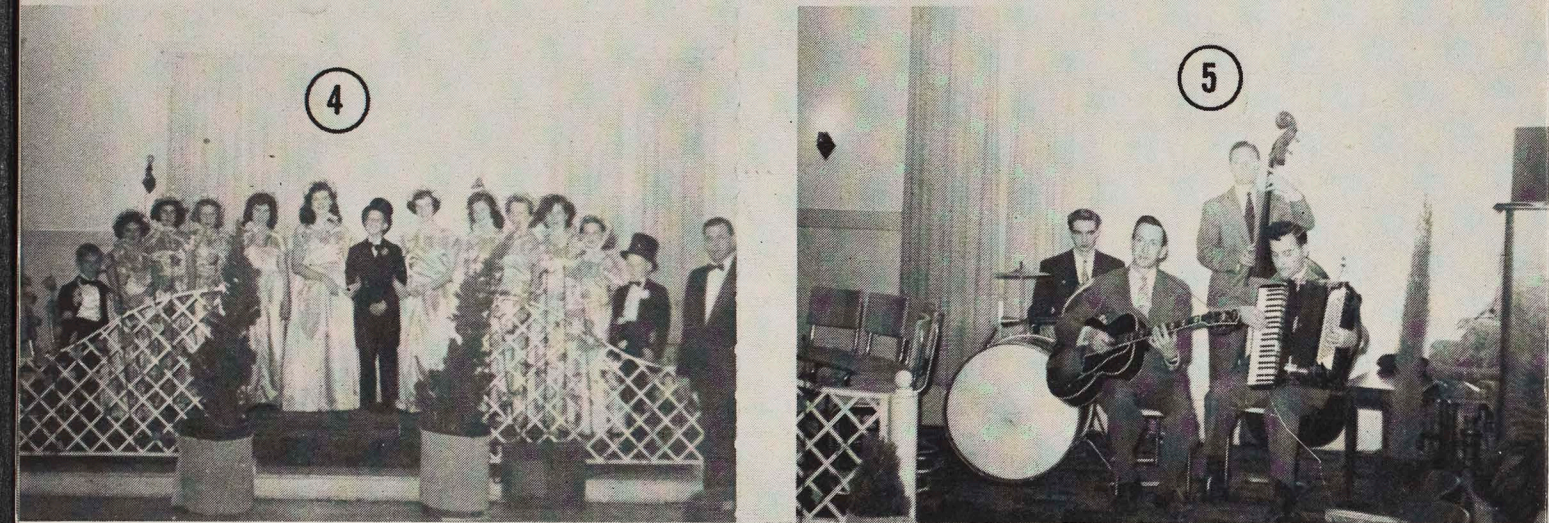
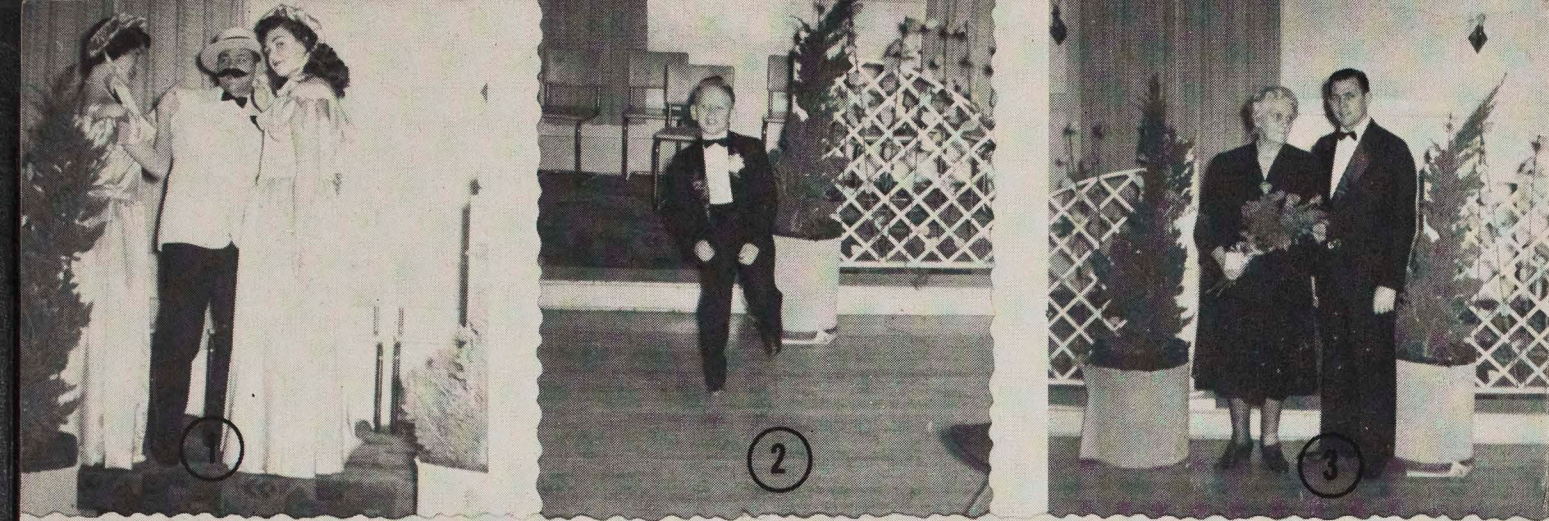
By A. L. Bristow

WHEN ANYTHING HAPPENS, it happens to Bill "(Little Chum)" Richards. He was driving through Hollywood one evening when some young hoodlums jumped on his rear bumper. The "Little Chum" got out to chase them away but they chased him instead. However, he got back in his car and sped away before any blood was shed.

We have a new name at the Mechanical offices. Arreen Lochemes decided to simplify things by changing her last name to Locke. However, she is still the same "Smiling Arreen" to those who work with her and the same cheerful voice the outside points hear when they call in the 8 A.M.'s.

The Martins, Otto and Nellie, celebrated their 25th wedding anniversary on April 20. Best wishes to them from their many friends, and we'll be looking forward to wishing them the same on their Golden anniversary.

Walter and Mrs. White were visited by their daughter and son-in-law, who, with their three children, were on their way from Washington, D.C., to Anchorage, Alaska, by auto in the middle of February. Walter was a little nervous until he heard that they had arrived safely at Anchorage ten days after leaving Sunny(?) California. Although they encountered blizzards and cold weather, 42 degrees below zero at times, and traveled for days through snow piled on each side of the road higher than the car, the trip was made without mishap.



SCENES FROM CHILD TALENT SHOW built up by Car Repairer Winn Wooton of Macy St. Car House. It's the "Alice Blue Gown Revue." (1) "Gimme a Little Kiss," with Winn as Jerry Colonna and two 13-year olds, Katherine Esterly, left, and Winn's niece, Shirley Wooton. He's taught both the girls to act and sing. (2) Johnny Downs, 6, doing a Fred Astaire rhythm in the revue. He and Winn are part-

ners in an Al Jolson act, where Winn plays Al, and Johnny plays Sonny Boy. (3) Winn and his mother, Mrs. James E. Wooton, who makes all costumes, which the two of them design together. (4) Cast of revue, with Producer Wooton at right. (5) The "Whispering Vagabonds, another venture of Wooton's, is a dance orchestra for which he acts as manager and publicity agent.—Want a dance orchestra?

MACY CAR REPAIRER IS SHOW IMPRESARIO

CAR REPAIRER Winn G. Wooton of Macy St. Car House has no trouble finding something to do in his spare time. This 35-year-old mechanic writes, produces, directs, and acts in his own variety shows.

But his shows are different—he makes use of child talent, first, because he's fond of children; second, because he likes to see them giving as well as getting; and third, because he says they're easier to train than grown-ups.

PUTS TOTS IN REVUE

His chief interest at the present time is the "Alice Blue Gown Revue," a group of Glendale boys and girls between the ages of four and 16 who dance, sing, and act under his training and encouragement. It got started about a year ago, when Winn, through a crippled news vendor in Glendale, became interested in a youth movement in that city. He rehearsed the children of some of his friends and

put on the revue in the Glendale Odd Fellows Hall as a means of interesting Glendale people in the youth movement. It had the desired effect, and as a result, the youth program is going strong, with, says Winn, the unofficial assistance of the Glendale police and city officials. Radio Station KIEV has given them time for spot announcements regarding the youth program, in which Winn, besides his revue, runs a bowling league and teaches the young folks how to bowl. Whether it's a matter of cause and effect or not, he isn't sure, but he says juvenile delinquency has lessened considerably since the program started.

MAKES OWN COSTUMES

He and his mother together design and make all their own costumes for the revue, and his wife, the former Betty Posner, whom he married last June, is the pianist. In order to make money for buying costume material, as well as for other expenses con-

nected with the production, Winn and six-year-old Johnny Downs have been appearing at civic and fraternal organization meetings all over the county in a black-and-white act in which Winn plays Al Jolson, and Johnny, an accomplished dancer, plays Sonny Boy.

Winn has always been interested in dramatics. His father was a minstrel, and his great-uncle is the famed playwright, Guy Bates Post. Winn has been producing his own shows since he was 19. His first was at Camden, New Jersey, where he produced a show with children, aged four to ten, in his church. It was so successful that a local radio station gave him a six-weeks contract to put it over the air.

LOVES DRAMATICS

He was earlier active in his high school dramatic club in Camden, where—in addition to winning letters in football, baseball, basketball,

and track—he was assistant director of "Blossom Time." At the age of 20, he began playing bit parts. He toured New Jersey for 14 months in "Peg o' My Heart," a production sponsored by a Catholic organization to raise funds to build a church and school.

When illness in the family made it necessary for him to add to the family income, he went to work for the Edward G. Budd Manufacturing Co. helping build streamlined trains in Philadelphia, 1936-1941. While there he wrote and produced a minstrel show in which he was end man.

After a stint in the merchant marine he wound up at San Diego working as a car repairer for the Santa Fe, and later for the San Diego Electric Railway. He came to work for PE in 1946 as Car Repairer at Macy St. After joining the Odd Fellows in Glendale, he found a golden opportunity to resume with enthusiasm his activities in training children to sing, dance, and bowl. Winn himself is an ardent bowler.

"With enthusiasm," says Winn, "you can do almost anything you want to do with kids." Enthusiasm—he sacrificed nearly a month's pay to outfit his revue with costumes!

AMERICAN LEGION PE POST 321



By
**John L.
Morris**

A HEARTY WELCOME is extended to Arthur H. Westerveld, Harold A. Wilks, Sylvester Hobbs and Richard J. Williams, who became members of this post and organization during recent weeks.

Comrade A. W. Bone, Sr., reports that his son, Comrade A. W. Bone, Jr., is now employed in Kern County as County Assistant Farm Adviser and 4H Club Leader. Incidentally, Comrade A. W. Bone, Jr., is a member of Post No. 321. He was a member of the Sons of the American in the unit sponsored by Post No. 321 before the recent war. Before going to Kern County he served as Agriculture Inspector in Los Angeles County. He graduated from Alhambra High School, did post-graduate work at Mark Keppel High School in Alhambra, and attended the University of California Agricultural School at

Davis in 1941 and 1942. He then served in the Army in the Pacific Theater of operations. He has been a member of the 4H Club for 7 years. We wish to extend our best regards to our dear comrade, and may his career be a successful one.

Guests that we have had the privilege of having at our meetings recently are Charles Lillywhite of Post No. 516, 23rd District Adjutant; Comrade George Stueder, Post No. 612; Comrade Blackstock, Aqueduct Post; Comrade Tom Bassett, Post No. 177; Jack Benson; our good friend Comrade Al Poggi of Post No. 516. Welcome, Comrades.

School awards were presented to students of Robert Louis Stevenson School in January. The Award winners were: First Place Girl: Ann King; First Place Boy: Alex Padillo; Second Place Girl: Hortensia Nedina; Second Place Boy: Kasper Chitjian. Presentations of awards and certificates was made by Comrade Charles Lewis, Chief of Staff of Calif. Dept., D.A.V., and his wife, Nila Lewis, Senior Vice Commander of Calif. Dept., D.A.V. Auxiliary. Our Auxiliary Unit is sponsoring Gladys Whitehurst of Los Angeles as candidate for Girls' State. The post is sponsoring a Boys' State candidate, but the boy has not been chosen yet. We will be expecting a good report from these candidates upon their return from Sacramento.

An anniversary dinner was held March 22 in honor of the 30th anniversary of the organization of the American Legion. Five members of the Gardena Valley Boys' Band were present to provide music after the dinner was consumed. Several of the Past Commanders of the Post were present.

Comrades, if you desire information on State Aid to Veterans, contact the Farm and Home District Office, 110 State Building, Los Angeles, or telephone MADison 1271 for information on Farm or Home Loans. For



**WILLIAM
STAUDIGEL**, West
Conductor who re-
tired Feb. 19, as he
looked during
World War I. He
served nine months
in France on the
Meuse-Argonne and
Verdun fronts in
the 52nd RR Artillery
as Sergeant 1/c. He
had 28 years of
service with PE.



LEGION AWARD WINNERS—Upper picture, left to right: Hortensia Nedina, second place girl; Kasper Chitjian, second place boy; A. W. Bone, Sr., PE Post 321 Representative; Ann King, first place girl; Alex Padillo, first place boy. Lower picture: the winners and, left to right, Nila Lewis, Senior Vice Commander, Calif. Dept., DAV Auxiliary; and Charles Lewis, Chief of Staff, Calif. Dept., DAV.

educational assistance write Educational Assistance and Service and Coordination, 357 S. Hill St. Los Angeles, or phone Madison 1271.

ATTENTION, Veterans of World War I: you are eligible for Government Insurance whether you ever applied for it before or not. You have your choice of term insurance or any of the six permanent plans. See your service officer.

Best wishes to all and here is hoping that you old-timers, yes, and you young fellows, too, will take a greater interest in the affairs of the organization and post, and get in the habit of attending the meetings more regularly.

HERE AND THERE WITH THE WOMEN'S CLUB By Florence N. Gramling

GOING BACK to Feb. 24, we had a potluck luncheon in the Tea Room to honor Mrs. Martha Huelsman ("Aunt Martha," as she is affectionately called) the occasion being her 82nd birthday. N. B. Vickrey joined us and extended felicitations. A birthday card signed by all was given to Aunt Martha. Following the luncheon, a motion picture, "Behind the Red Shield," was presented by Edgar L. Harris, of the Salvation Army, Men's Social Service Dept.

March 10 we celebrated the 21st birthday of the PEWC. "The Golden Key of Friendship" was the theme of the program. While Mrs. Ruby Gallacher rendered a musical selection on the piano, Mrs. Carl J. Gramling, Program Chairman, presented each one with a token—a miniature gold-



WOMEN'S CLUB HAS 21ST BIRTHDAY MARCH 10

SEATED—Mesdames C. O. Leatherman, H. Bell, Harry Pierce, J. B. Green, Chas. Dyer, Frank Palmer, Martha Huelsman. SECOND ROW—Mesdames Newby, C. Brearley, E. J. Hasenyager, Carl J. Gramling, Sarah Davidson, Ralph Howe, W. A. Bishop, Frank Miller, A. J. Andrews, Lloyd E. Murphy, R. R. Crunk, W. A. Hasty, W. E. Smart.

THIRD ROW—Mesdames Lydia Heller, Geo. H. Webster, Hazel Brown, Harry Thomas, Ruby Gallacher, Fred Hendricks J. T. Ashcroft, Chas. Chaplin, B. F. Moore, Chas. Glick, M. E. Childs, Wm. Thomas, H. A. Green, H. Fenwick, Bernice Armstrong, John Columbus. FOURTH ROW—Mesdames A. Hornbuckle, M. Steward, Eleanore Winter, J. Adams.

en key on a green ribbon, fastened with a white sequin. A card, "Friendship is the Golden Key," etc. was read and presented to Mrs. J. B. Green, President Emeritus, and one to Mrs. C. O. Leatherman, President. One was also sent to Fred E. Geibel, "Daddy of the Club."

Being in a reminiscent mood the Past Presidents and Charter Members carried us back through the years to March 8, 1929, when some 25 ladies held the initial meeting.

Mrs. Hazel Brown, sister of Mrs. Frank Miller, favored us with two vocal numbers—"A Little Bit of Ireland," and "Love's Old Sweet Song."

The cake was cut by Mrs. John Columbus and served by Mesdames Eleanor Winter, Ralph Howe, Wm. Thomas, Joseph Adams, Katherine Moore, A. J. Andrews, and Fred Hendricks.

The reading of a short poem, "I Know Something Good About You," by the Program Chairman was followed by presenting and pinning a scatter pin (golden key with chain and heart pendant attached) to Mrs. J. B. Green, President Emeritus.

Led by Mrs. Hazel Brown, accompanied by Mrs. Ruby Gallacher, the group sang "Silver Threads Among the Gold," which brought the program to a close.

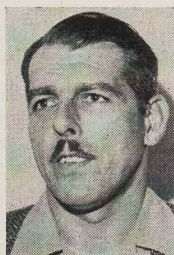
Four large baskets of golden acacia were effectively arranged in the Club Room—a bowl of jonquils centered the officers' table. In the Tea Room, Club colors, green and white, formed the color scheme for table decorations and refreshments, with a bit of gold for the centennial year. Low

bowls of jonquils centered each table. A key cut from gold paper, holding four pins, one for each flower, was placed for each guest. Individually wrapped white ice cream; gold cake, iced in white and decorated in green; and coffee were served. Favors were miniature "ships of friendship" in green and white, filled with green and white candies and topped with orange slices, small white candleholders, and green candles.

The officers' table was laid with a lace cloth, two large keys cut from gold paper marking the places of Mrs. C. O. Leatherman, President, and Mrs. J. B. Green, President Emeritus.

PACIFIC ELECTRIC MASONIC CLUB

By
Lloyd T.
Leary



THE FIRST MEETING of 1949 was held on Wednesday, March 23, in the Pacific Electric Club Rooms. After a very snappy business meeting, we were presented with a Technicolor picture of the Shrine Annual East-West football game that is held in San Francisco's Kersarge Stadium each January 1, and those that had the privilege of witnessing this picture were certainly well pleased.

At this meeting it was decided to

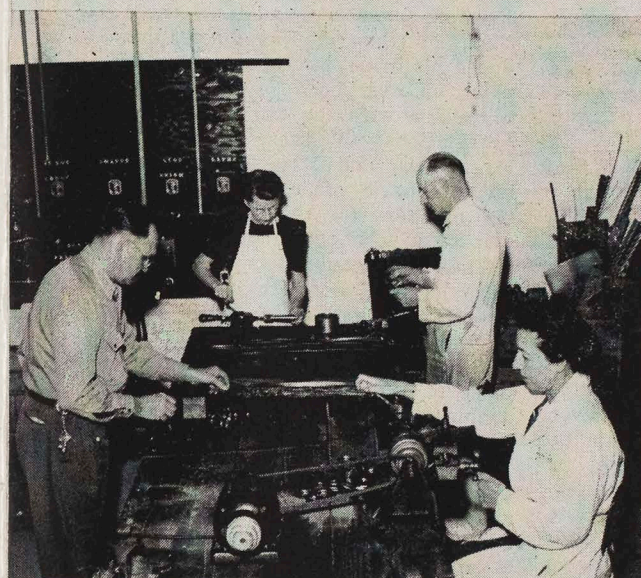
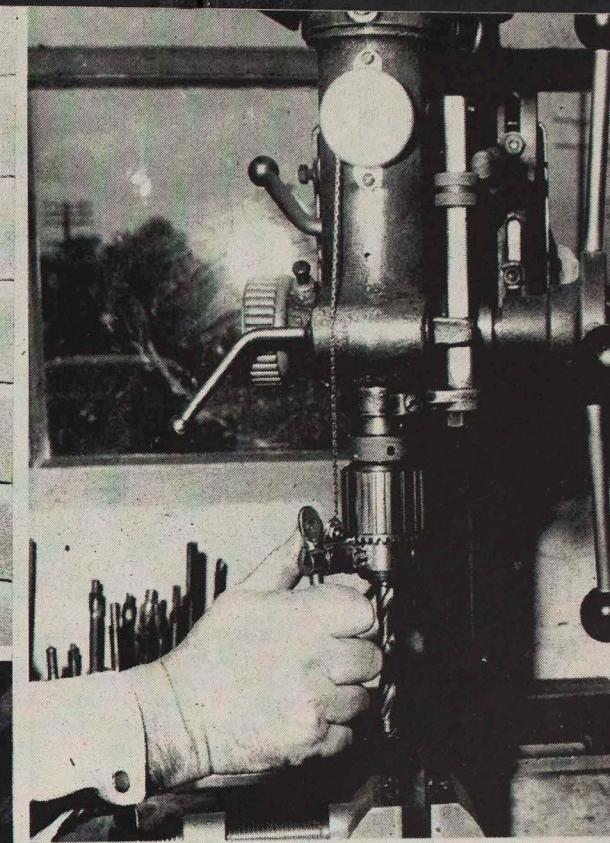
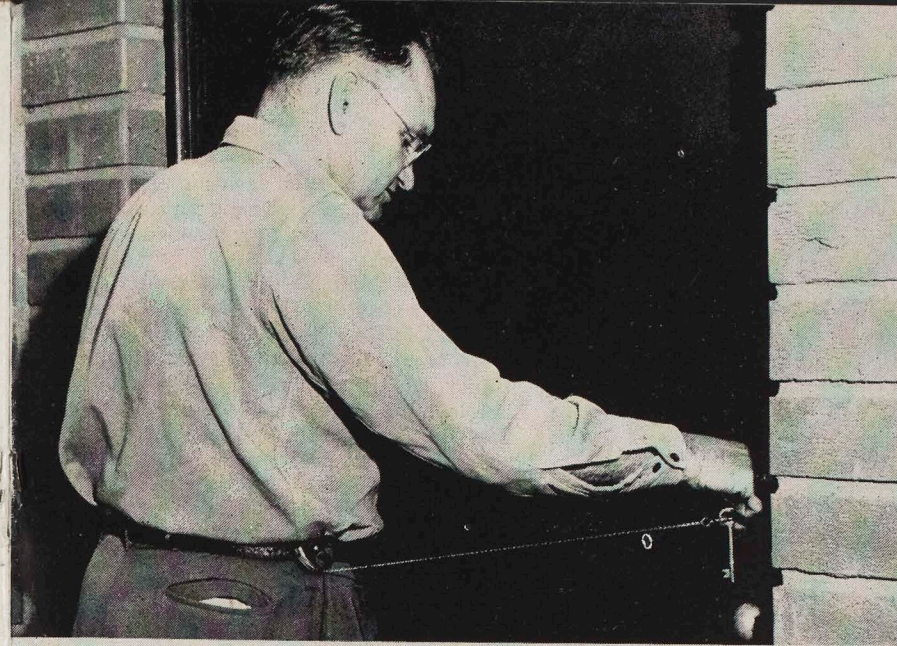
hold our annual Ladies' Night the latter part of May, a definite date to be arranged by the Entertainment Committee and announced.

It has been brought to the attention of your correspondent that a few of our members never receive notices or their membership cards. Will these members therefore take just one minute to drop me a card or call EX-position 9361 and give me their correct address so that this oversight may be corrected and our mailing list corrected to date.

The April 27 meeting has been canceled because of Public School Week. Special Attention: All members wishing to try out for the Degree Team contact the following:

W. C. Kennedy, Terminal Foreman, Ocean Park; A. B. Marshall, Terminal Foreman, West Hollywood; Gordon Jackson, c/o Terminal Foreman, Pasadena; Clarence Newman, c/o Dispatcher's Office, Los Angeles.

LLOYD T. LEARY, Lineman, has been designated as correspondent for the Masonic Club for the new year, succeeding M. J. DAVISON, who for the past several years has been a faithful contributor. Lloyd now captains the Masonic degree team, and is officially called Publicity Director for the Masonic Club. He began his PE service in 1926 as General Station Clerk at Wingfoot in the boxcar office, worked in the Santa Monica, West Hollywood, and Torrance agencies, and in 1927 became a Clerk in Freight Traffic. In 1931 he entered train service as Conductor on the West, resigned late that year to enter business for himself, and after 10 "lost" years, came back as Lineman. Enthusiastic Rod and Gun Clubber, he won first prize for largest trout caught in 1948. Girls, his wife's name is Mary.—Welcome, Lloyd, and much appreciation for your past work, Mervin Davison.



TOP LEFT—Conductor W. R. Lummis demonstrates use of "Jiffy Key-Bak" key retriever as he unlocks a door. When finished, he just lets go and key is automatically drawn back to retriever case on belt. TOP RIGHT—Use of key retriever for chuck key on drill press is illustrated. Retriever is screwed to machine and keeps key handy. LOWER LEFT—Margasons and Lummises at work making "Key-Baks" in their shop, 1980 E. Walnut St., Pasadena. Left to right are Motor-

man Lummis riveting chain, spring, and drum together; Mrs. Nora Margason winding springs; Conductor O. E. Margason forming end of spring to fit spring post; Mrs. Dorothy Lummis machining the cases. LOWER RIGHT—The two families at work assembling key retrievers in the Margason garage, after parts are all made and ready to fit. Mrs. Margason, left, packs retrievers in boxes ready for shipment to distributors. When pushed, the four can assemble 1000 units a week.

"Key-Bak" Retriever, Made by Trainmen, Keeps Your Keys Handy

USEFUL FOR TRAINMEN who carry keys, for Machinists who have trouble keeping track of their drill press chuck key, for Welders who carry lighters for their acetylene torches, and for many other purposes, is a key retriever devised and manufactured in their spare time by W. R. Lummis, Sierra Madre Motorman, and O. E. Margason, Monrovia Conductor.

It's a small, round chrome-plated or enameled gadget, resembling a six-foot flexible steel rule case, which can be attached to your belt or

screwed to a wall or a machine for handy reference. A 25-inch chain, with swivel to which keys may be attached, pulls out and retrieves itself by means of a spring arrangement. Tension can be adjusted according to the load carried.

It took courage for these two men, both with a quarter century of PE service, to decide to invest most of their life savings in a patent on an invention which at first was not completely satisfactory in operation. But they saw possibilities in it, and, by devoting their thought and energy to further experiment, made it a highly efficient retriever which is attractive, durable, dependable, and guaranteed.

On the market for the past year

and a half, the "Jiffy Key-Bak" retriever may be obtained from the PE Uniform Department, from some stores, or from the makers, who maintain an office at the Margason home, 2288 Casa Grande, Pasadena — SYca-more 44007.

The Magic of America

SQUARE FEET OF HOUSING SPACE PER PERSON

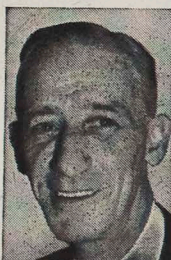
40 sq. ft.	125 sq. ft.	400 sq. ft.
RUSSIA with Communism	ENGLAND with Socialism	UNITED STATES with Free Enterprise



March-April, 1949

STEAMSHIP LEAGUE TROPHY—Jux Schnatmeier, left center, Vice President, Steamship Bowling League and member of the Executive Board of the Los Angeles Bowling Association, presents Capt. Charles P. Hill of the PE team the trophy for second place honors in the League. Others, left to right, are Johnny Hubener, Ray Jones, Ollie Steuernagel, and Preston Jones. Presentation was made at the Steamship League Bowling Banquet March 28, 1949. — A Tommy Box photo

PACIFIC ELECTRIC BOWLING NEWS



By **Charlie Hill**

THE 1948-49 SEASON of the PE Bowling League came to a close on April 8. The News Service team nosed out the BRC Railettes by one point, winning the Six O'Clock Branch with 68 wins and 40 losses, while in the Eight O'Clock Branch the Macy Garage won by one point over the De Spares, another quintet of ladies, 65 wins and 43 losses. The PE Club, of the Six O'Clock Squad, and the BRC Aces and Woodpeckers, of the Eight O'Clock Branch, were contenders for first place honors in their

respective squads up to the last night, but folded up in the wind-up. The play-off between the News Service and Macy Garage teams was to take place on the night of April 22, and President O. A. Smith's perpetual trophy was to be awarded to the new champions at the annual banquet, scheduled for April 23. The race in each branch has been the most closely contested in several years, and at least seven teams had chances to win or tie up the contests on the last night of schedule.

Congratulations are extended to Captains Johnny Hubener of the Macy Garage and Carl Hill of the News Service, and all of the other members of their respective teams, and may the best team win the final play-off. Results of the championship match, as well as of the sweepstakes to be held April 15 and 22, will be announced in the next issue of PE MAGAZINE. The annual banquet will also be covered at that time. The dinner was again to be held at Scully's and our General Manager, T. L. Wagenebach, was to be master of cere-

monies. Weekly and season prizes were to be awarded at that time, and a great evening was programmed for this big event.

The Steamship League finished its 21st season on March 15th. The Pacific Electric team was awarded second place trophy at the League's annual dinner on March 28. The American President Lines team, captained by Ron De Long, took the lead on the opening night, and never relinquished their lead, although they were threatened throughout the last half by the PE aggregation, which team went into second place on November 9 and held that spot during the balance of the time, but was never able to overtake the winners. At the annual dinner, Preston Jones, a member of the PE team, and son of Ray Jones, introduced his bride, having sprung a surprise on everybody by taking unto himself a wife the day before. Congratulations to these newly-weds. Mrs. Jones and Mrs. George Elder, another bride of a few days, drew the numbers for the several special prizes given at the dinner.

The tournament between the Pacific Electric and Los Angeles Transit Lines Leagues will take place at the Sunset Bowling Center, in Hollywood, on May 15. Team events will take place at 10:00 a.m., followed by the doubles and singles events about 12:30 o'clock. Several trophies, one a large "perpetual" by the Sunset Bowling Center, and cash prizes will be awarded. Twelve PE men's teams have signed up for this event, which is open to all employees who have bowled this past season in an ABC sanctioned league. It is hoped that this will be a preliminary to an Annual Transportation Tournament, in which all of the transportation lines operating into Los Angeles will be represented.

Special meeting was called for April 20 for the purpose of organizing a PE Summer League, which will probably be a mixed handicap set-up.

WEEKLY HIGHLIGHTS OF PACIFIC ELECTRIC BOWLERS

SIX O'CLOCK BRANCH								
Date	High Team Game	High Team Series	*High Individual Game	High Individual Series				
Mar. 11	News Service	962	Rod & Gun Club	2761	J. B. Rogers	236	J. Stewart	629
Mar. 18	Rod & Gun Club	933	Field Engineers	2701	K. A. Olson	233	C. F. Hill	572
Mar. 25	Rod & Gun Club	1012	Rod & Gun Club	2751	L. Wedl	267	L. Wedl	610
Apr. 1	News Service	955	News Service	2691	B. F. Manley	241	J. Stewart	592
Apr. 8	Keglerettes	994	Keglerettes	2837	J. Stewart	216	J. Stewart	564
EIGHT O'CLOCK BRANCH								
Mar. 11	Woodpeckers	1007	Woodpeckers	2872	O. Steuernagel	243	O. Steuernagel	614
Mar. 18	Macy Garage	937	Macy Garage	2687	J. Hubener	226	J. Hubener	612
Mar. 25	Magnetics	938	Woodpeckers	2676	W. Hanratty	*218		
					G. M. Bisbee	*218	D. Newman	574
Apr. 1	Motor Transit	910	B.R.C. Aces	2607	L. Seaman	246	D. P. Nelson	584
Apr. 8	DeSpares	970	Magnetics	2674	R. Disney	228	O. Steuernagel	595

x—Does not include individual handicap
*—Tied

March-April, 1949

Pacific Electric Club Bulletin

- SATURDAY, APRIL 23:**
PE Bowling League Annual Banquet and Distribution of Prizes—Scully's Restaurant—4601 Crenshaw Blvd.—Dinner promptly at 7:00 p.m.
- TUESDAY, APRIL 26:**
American Legion Post No. 321
Semimonthly Meeting—8:00 p.m.
American Legion Auxiliary Unit 321
Semimonthly Meeting—8:00 p.m.
- THURSDAY, APRIL 28:**
PE Women's Club Social Gathering.
- TUESDAY, MAY 3:**
PE Glee Club Rehearsal—4:30 to 7:00 p.m.
Veterans of Foreign Wars Post 3956
Semimonthly Meeting—8:00 p.m.
- THURSDAY, MAY 5:**
PE Women's Club Afternoon Card Party 500 and Bridge—Prizes to winners—1:00 p.m.
- TUESDAY, MAY 10:**
PE Glee Club Rehearsal—4:30 to 7:00 p.m.
American Legion Post No. 321
Semimonthly Meeting—8:00 p.m.
American Legion Auxiliary Unit 321
Semimonthly Meeting—8:00 p.m.
- WEDNESDAY, MAY 11:**
PE Rod & Gun Club Monthly Meeting—Picnic and Refreshments—7:30 p.m.
- THURSDAY, MAY 12:**
PE Women's Club Afternoon Business Meeting and Program—Election of officers—1:00 p.m.
- FRIDAY, MAY 13:**
PE Agents' Association Monthly Meeting—7:30 p.m.
- TUESDAY, MAY 17:**
PE Glee Club Rehearsal—4:30 to 7:00 p.m.
Veterans of Foreign Wars Post 3956
Semimonthly Meeting—8:00 p.m.
- WEDNESDAY, MAY 18:**
PE Camera Club Monthly Meeting—Interesting Pictures and Refreshments—7:30 p.m.
- THURSDAY, MAY 19:**
PE Women's Club Afternoon Card Party Bridge and 500—Prizes to winners—1:00 p.m.
- TUESDAY, MAY 24:**
PE Glee Club Rehearsal—4:30 to 7:00 p.m.
American Legion Post No. 321
Semimonthly Meeting—8:00 p.m.
American Legion Auxiliary Unit 321
Semimonthly Meeting—8:00 p.m.
- WEDNESDAY, MAY 25:**
PE Masonic Club Monthly Meeting—7:30 p.m.
- THURSDAY, MAY 26:**
PE Women's Club Social Gathering.
- MONDAY, MAY 30:**
Memorial Day—Legal Holiday—Club Rooms Closed.
- TUESDAY, MAY 31:**
PE Glee Club Rehearsal—4:30 to 7:00 p.m.
- THURSDAY, JUNE 2:**
PE Women's Club Afternoon Card Party 500 and Bridge—Prizes to winners—1:00 p.m.
- TUESDAY, JUNE 7:**
PE Glee Club Rehearsal—4:30 to 7:00 p.m.
Veterans of Foreign Wars Post 3956
Semimonthly Meeting—8:00 p.m.
- WEDNESDAY, JUNE 8:**
PE Rod & Gun Monthly Meeting—Sporting Pictures and Refreshments—7:30 p.m.
- TUESDAY, JUNE 14:**
PE Glee Club Rehearsal—4:30 to 7:00 p.m.
American Legion Post No. 321
Semimonthly Meeting—8:00 p.m.
American Legion Auxiliary Unit 321
Semimonthly Meeting—8:00 p.m.
- WEDNESDAY, JUNE 15:**
PE Camera Club Monthly Meeting—Colored Pictures and Refreshments—7:30 p.m.
- THURSDAY, JUNE 16:**
PE Women's Club Afternoon Card Party Bridge and 500—Prizes to winners—1:00 p.m.

CORRECTION

Blame your Editor, not Charlie, for wrongly crediting Phyllis Chubbic, instead of Phyllis Giles, with the (then) top bowling score of 169 for the ladies, in the last issue. Changed Charlie's copy, didn't check. Red-faced mutterings of apology to all concerned.

— WARREN SILLIMAN

PACIFIC ELECTRIC MAGAZINE

Concert to Be Given By PE Glee Club at Beverly Hills Lodge

THE FIRST CONCERT of the Pacific Electric Glee Club was to be presented at the Beverly Hills Masonic Temple, 289 N. Robertson Blvd., at 8:00 p.m., Monday, April 25. That night is Ladies' Night, and Mervin J. Davison, PE Traveling Auditor and master of John Marshall Lodge, estimated that some 250 people, including the PE Masonic Club and families, would be present.

Featured soloists were to be Evelyn Baker, soprano, and Harry Shea, tenor. The Glee Club, the men's chorus, and the women's chorus, all sing under the direction of Warren Silliman. Maxine Eaton is the accompanist.

The program:

I
"Prayer of Thanksgiving," ancient Netherlands folk tune
"All in the April Evening," by Robertson
"Gently, Johnny," English folk song
By the Glee Club

II
"Spirit Flower," by Campbell-Tipton
"A Kiss in the Dark," by Herbert Evelyn Baker, soprano

III
"On Wings of Song," by Mendelssohn
"Bonnie Doon," by Miller
By the Women's Chorus

IV
"Will You Remember?" (from "Maytime") by Romberg
"Make Believe" (from "Showboat"), by Kern
Duet by Evelyn Baker, soprano, and Harry Shea, tenor

V
"Stars of the Summer Night," by Woodbury
"Who Did?" spiritual
By the Men's Chorus

VI
"I'll Take You Home Again, Kathleen," by Westendorf
"A Little Bit of Heaven," by Ball
Harry Shea, tenor

VII
"If I Could Tell You," by Firestone
"Tea for Two" (from "No, No, Nanette"), by Youmans
"Couldn't Hear Nobody Pray," spiritual
By the Glee Club

Glee Club performances in the near future include a quartet to be presented at the April 28 meeting of the Southern California Industrial Editors Association, and a complete chorus program, in conjunction with the Southern Pacific Band, at the Southern Pacific picnic in June.



JACK RABBIT HUNTERS—Left to right are Sanford Whiting, former Armature Winder; K. L. Oefinger, Leader, Winding Room; Russ Nolan, friend of Oefinger; and Harry Pierce, Leader, Wood Mill. They took this picture in Carbon Canyon, where they stopped to dress 30-odd rabbits they shot on a rabbit drive in the vineyards between Chino and Mira Loma, Sunday, Feb. 6. A somewhat similar picture was published in NATIONAL NEWS, employe publication of the National Supply Co., Torrance, where Whiting now works and where he is Junior Past President of the National's Rod and Gun Club.



Vol. 29, No. 5 March-April, 1949

Published bimonthly by
PACIFIC ELECTRIC RAILWAY COMPANY
O. A. SMITH, President
610 South Main St.
Los Angeles 14, California

EDITORIAL SUPERVISION

Glenn E. Collins
Assistant to President

EDITOR

W. Warren Silliman, Jr.
695 P. E. Building
TU 7272, Ext. 2195

ASSISTANTS

Fred B. Hopkins, Charles P. Hill, Arlie Skelton, Deane H. Koch, Suzanne M. J. Smith, Ted Harrison, Jack DeLaney, M. J. Davison, Milton R. Clark, A. L. Bristow, Robert F. Burns, John L. Morris, Earl O. Miller, H. L. Woodford, Marge Zimmer, Della Pinkerton, Bill Newman, Ralph P. Murphy, Floyd Hamel, Dakin Boardman, Frances Moore, Florence N. Gramling, Nelson Fetterleigh, Don Hileman.

PHOTOGRAPHY
Harley B. Talbott

Copy deadline for the May-June issue will be May 23.

The bride was a poor cook. In the evening after dinner, she and her unfortunate spouse were watching the moon.

She: "Look, dear; the moon is full tonight."

He: "Lucky guy! That's more than I can say."



"So I sez to the Trainmaster, 'what safety rule?'"