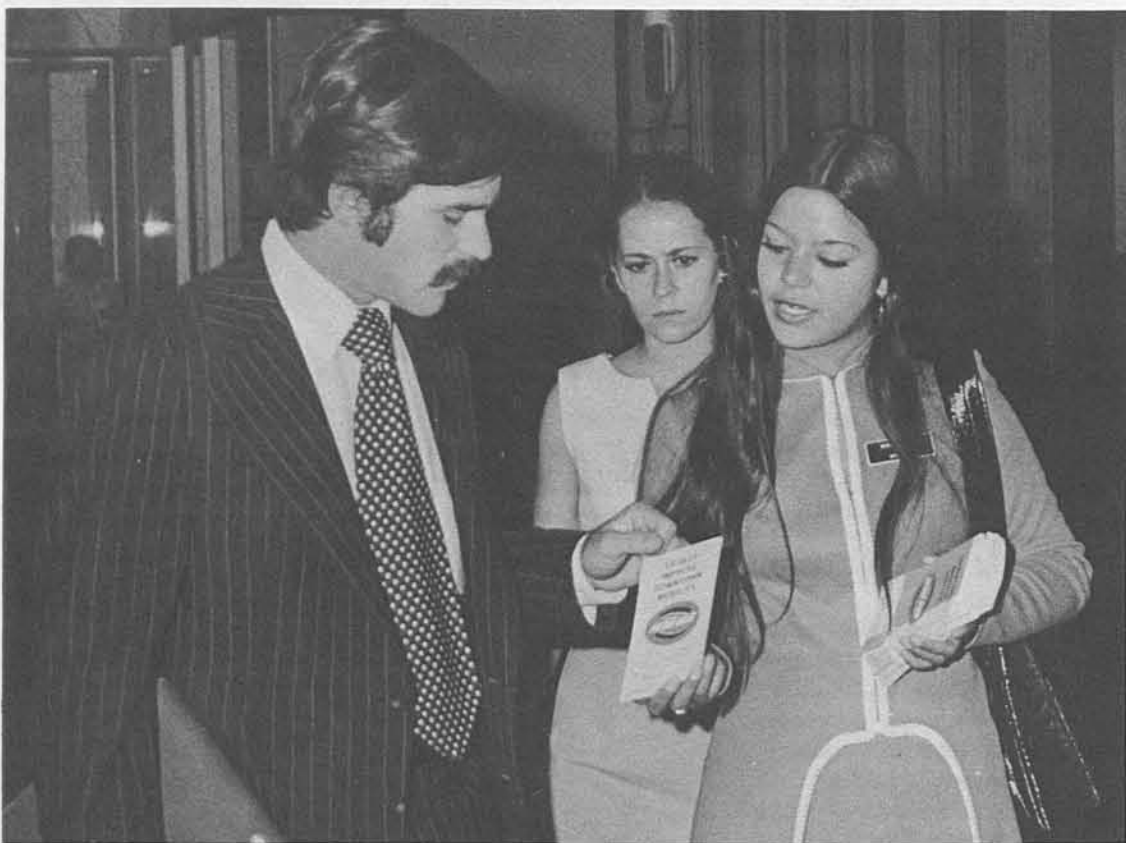




# SOUTHERN CALIFORNIA RAPID TRANSIT DISTRICT

64-1409 1865629

## Mini-buses Previewed October 13 Through 15 In Downtown L.A.



MINI-MAIDS HAND OUT INFORMATION BROCHURES IN CENTRAL BUSINESS DISTRICT—As part of the District's program to inform potential users of the District's new Mini-bus service, Mini-maids hand out information brochures in the Central Business District. Mini-maid Marie Alvarado gives a prospective customer a brochure containing information on how to use the new bus system and a map of its route.

### New Service Goals: Less Traffic Congestion and Smog; People Circulation

Hundreds of curious Angelenos boarded two Mini-buses on display at Pershing Square and City Hall October 13, 14 and 15. The Mini's made their first appearance to more-than-audible public approval.

Parked imposingly at two downtown locations—in the center of Pershing Square and beside the water fountain at City Hall—the Mini's were the center of attraction between the hours of 10 a.m. and 2 p.m. during the three banner days.

Hundreds of people climbed aboard, tried the seats (operators' included), honked the horn and asked questions. Lots of questions.

Lovely Mini-maids Rina Alvarado and Marie Torres handed out information brochures concerning the service, complete with maps of the Mini-bus route. Each bus was also manned by an RTD representatives who answered questions regarding the Mini's upcoming operations and service.

Dr. Norman Topping, RTD president and Jack P. Gilstrap, RTD general manager, headed up a press conference Friday at 12:15 at City Hall. Mayor Sam Yorty, Supervisor Warren Dorn, Congressmen Edward R. Roybal and members of the Community Redevelopment Agency and the Central City Association were also on hand for the press conference.

Following the press conference a motorcade over part of the Mini-bus route got underway using six Mini-buses. Five of the buses carried RTD Directors and District officials; business, city and government officials; and representatives of the organizations helping fund the Mini-bus system — City Council, County Supervisors and the Community Redevelopment Agency. The sixth bus had a band aboard.

RTD president Dr. Norman Topping pointed up the urgency of the new Mini-bus program, saying that improved means of circulation for people within the Central Business District has been a pressing need for years. He believes that the new Mini-bus program will deliver substantial benefits to the downtown area in the form of increased retail sales and in a measurable decrease in the number of cars in operation and attendant air pollution.

Continued on Page 4

### Senate Bill 325 Goes To Assembly Floor For Vote

The broadest and most widely supported transit finance measure in many years — Senate Bill 325 — has been approved by the Ways and Means Committee in Sacramento. It is now ready for a vote on the Assembly floor.

If passed this bill will provide a regular source of operating funds for the RTD and all the other publicly-owned transit systems in the state of California. The measure will provide local matching funds to qualify for federal funds and will provide cities and counties with additional new revenue for general government purposes.

SB 325 calls for the removal of the present sales tax exemption on gasoline and a decrease of state sales tax from 4% to 3.75%, while increasing local sales tax from 1% to 1.25%. The additional ¼% in local taxes would be used for improved transit.

Senate President pro tem James Mills, D-San Diego co-authored the bill with Senator Alfred E. Alquist, D-San Jose and Assemblyman Wadie P. Deddah, D-Chula Vista.

### Student Coupon Books Available For Former Blue & White Patrons

Responding to numerous requests from students, parents and school officials in the areas of Watts, South Central Los Angeles and Compton, RTD is now selling "Student Coupon Books" for routes formerly served by the Blue and White Bus Company.

These "Student Coupon Books" permit students to ride RTD emergency lines 303 (Compton via Avalon Boulevard); 304 (Compton via Central Avenue); 305 (Huntington Park); 306 (Manchester and Central to Imperial); and 308 (Compton Avenue) for half the regular fare. The books have 40 pages and cost \$5.60 which means each student ride is only 14 cents.

"Student Coupon Books" are available at the following locations: House of Maisha—Tropical Fish, Record and Gift Shop, 12021 South Central Avenue, Los Angeles; Centennial High School, 2606 North Central Avenue, Compton; Jordan High School, 325 East 103rd Street, Los Angeles; Locke High School, 325 East 111th Street, Los Angeles; Henry Clay Junior High School, 12226 South Western Avenue, Los Angeles; and Washington High School, 10860 South Denker Avenue, Los Angeles.

These special coupon books will be accepted for student transportation only on those bus routes previously served by the Blue and White Bus Company and not on regular RTD lines. The regular "Student Discount Card" will not be accepted on the five RTD emergency lines at this time.

### Division 6 Wins Safety Trophy

Division 6 topped the Drive With Pride contest for the month of August with a 51.4% reduction in accidents for that period.

Running a close second were Divisions 9 and 13 with a reduction of 48.3%. Division 7 placed third with a 36% reduction.

Johnny Johnston, assistant general superintendent of transportation, was on hand to host the presentation ceremonies and talked briefly about the exclusive express busway and the new Mini-bus service for downtown Los Angeles which starts October 18.

After the presentation ceremonies Johnston held an impromptu question and answer period, throwing the floor open to answer questions regarding transportation and the District.

### RTD Employees Commended For ACME Donations

The District has received a letter from Harold J. Ostly, president of the Los Angeles Hospital Charity Fund, Inc., expressing the Fund's appreciation to RTD personnel for their participation in the District's ACME Club.

The letter read, in part: "With your help and with the cooperation of doctors and member hospitals, the Fund has had another very successful year in providing hospital care for people experiencing medically created financial problems, far beyond the limits of their personal resources.

"Thank you for sharing the concern for patients who have told us, 'It is difficult to find words to express our appreciation for your help.'"

### Share-A-Ride-Day In Los Angeles

Fifteen hundred District buses, including three "ecology specials" participated in Share-A-Ride-Day in Los Angeles.

The three "ecology specials" consisted of three buses picking up passengers at three points in the Los Angeles area and taking them to downtown Los Angeles and returning them that night.

According to RTD officials RTD's participation in Share-A-Ride-Day showed the District's concern for Southern California's environment and was another opportunity to bring additional attention to the critical issue of smog and traffic congestion in Los Angeles.

## Schedule Affecting Events

### Monday, October 25

Veterans Day. Special schedules will be operated as follows: Lines 7, 26, 44 and 50. These schedules will be printed on pink paper and should be discarded after this date. Public and parochial schools will be closed.

### Saturday, October 30

Last day of Oak Tree Meet racing at Santa Anita.

### Sunday, October 31

Pacific Standard Time will be in effect. Schedule letters will be issued for necessary adjustments in service.

### Tuesday, November 2

Election Day. City, County and State offices will be closed. Federal offices, banks, department stores, etc., will be open. Schedule letters will be issued for necessary adjustments in service.

### Wednesday, November 24

Santa Claus Lane Parade in Hollywood commencing at 6:45 p.m. Extra service will be provided for those lines operating in the Hollywood area.

### Thursday, November 25

Thanksgiving Day. Sunday schedules will be operated on all lines with the following exceptions:

- A. Line 31 — Legal Holiday Schedule No. 68053.
- B. Line 54 — Legal Holiday Schedule No. 68014.
- C. No service will be provided on Lines 105, 107, 108, 109 or 110.
- D. Day harness racing at Hollywood Park, post time will be at noon. (No night racing on this date.) Schedule letters will be issued for this event.

### Friday, November 26

School holiday for public and parochial schools. School holiday, race day schedule will be operated.

### Friday, November 26 to Thursday, December 23, Inclusive

Christmas shopping season. Most stores in downtown Los Angeles will remain open evenings until 9:00 p.m. All lines operating in downtown Los Angeles will operate Monday schedules, Monday through Friday, during this period, except Line 95 which will operate Monday or Except Monday schedules as indicated in paddles and work runs.

### Saturdays, December 4, 11 and 18

Special pre-Christmas schedules will be operated on Lines 5, 6, 7, 26, 28, 29 and 44.

### Wednesday, December 8

Immaculate Conception. Catholic schools closed.

### Saturday, December 11

Last night of Western harness racing at Hollywood Park.

### Sunday, December 12

Our Lady of Guadalupe Parade, East Los Angeles.

### December 20 through December 31

Los Angeles City School Christmas Vacation.

### December 22 through December 31

Catholic School Christmas Vacation. (Some Catholic schools will close December 20 through December 31.)

### Saturday, December 25

Christmas Day. Sunday schedules will be operated on all lines with the following exceptions:

- A. Line 31 — Legal Holiday Schedule No. 68053.
- B. Line 54 — Legal Holiday Schedule No. 68014.
- C. No service will be provided on Lines 105, 107, 108, 109 or 110.
- D. Line 95 — Griffith Park Observatory closed.

### Sunday, December 26

Tentative effective date of division shake-ups.

## What's Happening At The California Museum Of Science And Industry

**MORE THAN WORDS** — Children's Book Fair dramatizes for youngsters the role books can play in the life of every person who wishes to discover himself, his fellow human beings and the world around him. Publishers booths, manned by experts who will discuss and illustrate new techniques of reading, and a table display of all previous Caldecott and Newberry Award-winning children's books are planned.

Exhibit will include original illustrations by Lillian Hoban, the illustrator of a score of picture books for children, including best-selling stories about Frances, America's most popular badger; and Leo Politi, author and illustrator of such endearing books as "The Song of the Swallows," "Little Pancho," "Pedro," "The Angel of Olvera Street," and others. Open October 31 thru January 16.

**PHOTOGRAPHY WEST** — Professional photographers throughout the Western States vie each year to have their portraits, commercial, industrial and illustrative photographs shown in this exhibit. Open November 6 thru December 19.

**THE WORLD OF SID AND MARTY KROFT**—The imaginative creators of "H. R. Pufnstuf," "The Bugaloos," and the puppet show, "Les Poupees de Paris," unwrap their sketches, animated characters, sets and costumes for a fanciful show designed to delight members of every generation in a special holiday show. Opens November 17 thru March 5, 1972.

**BILL OF RIGHTS POSTERS**—Exhibit results from poster contest throughout high schools on the Bill of Rights theme. Sponsored by Bill of Rights Commission. Opens November 19 thru January 2, 1972.

### Line 49 Change

The route of buses on Line 49 has been changed to better serve the new Los Angeles Convention Center.

Line 49 buses will now operate north and south along Figueroa Street between 5th Street and 23rd Street instead of traveling along Flower Street.

## Scribes Needed For RTD Flyer

The eighth edition of the RTD Flyer is now off the press and for the last three issues there has been a different format—the RTD Flyer is now a newspaper.

As a newspaper there is even a greater need for news—news that can only come from District employees. Many things are happening every day on transit property throughout the District that would be of interest to RTD Flyer readers. Some are humorous and unusual; some are personal, births and marriages, but items that fellow employees would like to know and see in their newspaper. An employee might have solved a problem that may still be bothering others—or found an easy way of doing something, he can share his findings through the RTD Flyer.

Those interested in writing for the new RTD Flyer should contact the District's Public Information Office in Room 500 and ask for Bill Reason. He can also be reached by telephone on extension 431.



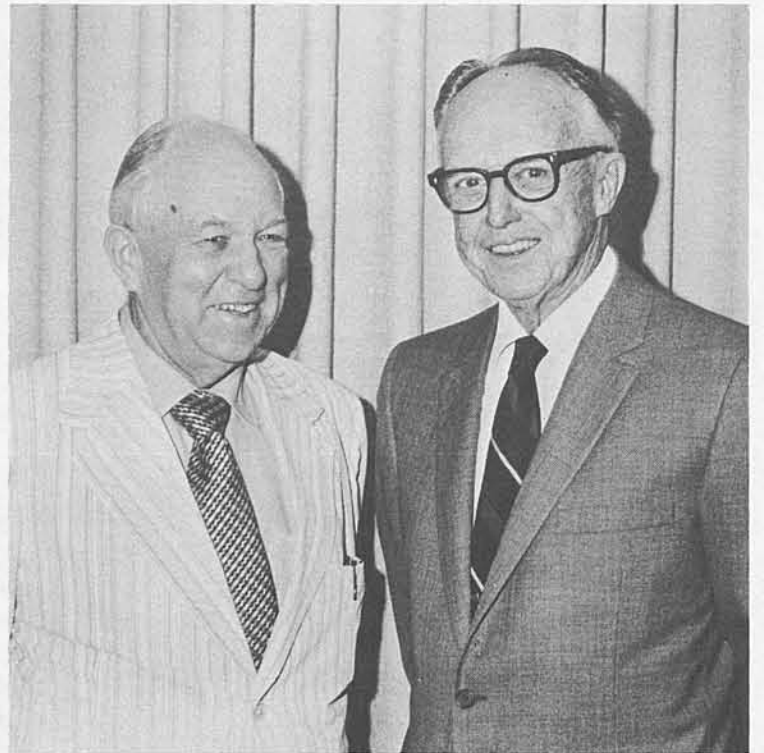
**GLENDALE RESIDENT JOINS RTD**—Joe B. Scatchard (left) is welcomed to RTD by general manager Jack R. Gilstrap following Scatchard's appointment as the District's new comptroller-treasurer-auditor.

Joe B. Scatchard, a financial management executive for the past 16 years, is the District's new Controller-Treasurer-Auditor.

In this position he will administer the District's financial affairs and participate as a member of the Executive Staff.

Prior to his appointment

## Directors Newcomb, Compton Active In Community and Transit Service



**PRE-MEETING CONFERENCE**—Directors Charles E. Compton (left) and Douglas A. Newcomb discuss personnel matters prior to attending a meeting of the Board's Personnel Committee.

RTD Directors Douglas A. Newcomb and Charles E. Compton are two of eleven men comprising a governing board responsive to local community needs and desires.

These eleven men were appointed by four separate local bodies: the City Selection Committee, 4 seats; the City of Los Angeles, 2 seats; and the Los Angeles County Board of Supervisors, 5 seats. This Board has been vested with all executive and administrative authority over District operations.

Director Douglas A. Newcomb, retired superintendent of the Long Beach Unified School District, was appointed to his post by Burton W. Chase, Los Angeles County Su-

pervisor.

He is one of five County representatives on the transit agency board and his appointment was concurred in by the Board of Supervisors. He previously served as a member of the Board of the Los Angeles Metropolitan Transit Authority, predecessor agency to the RTD.

A member of the RTD Board since the District was formed in 1964, Newcomb has long been active as an educator and civic leader. While rising from teacher to superintendent in the Long Beach school system, Newcomb rendered service to a variety of professional and service organizations. He was president of the Long Beach Rotary Club, vice president of the Board of Directors of the Memorial Hospital of Long Beach, and vice president of the Board of Directors of the Long Beach Public Transportation Company.

He is presently vice-chairman of the Board's Personnel Committee and a member of the Finance Committee.

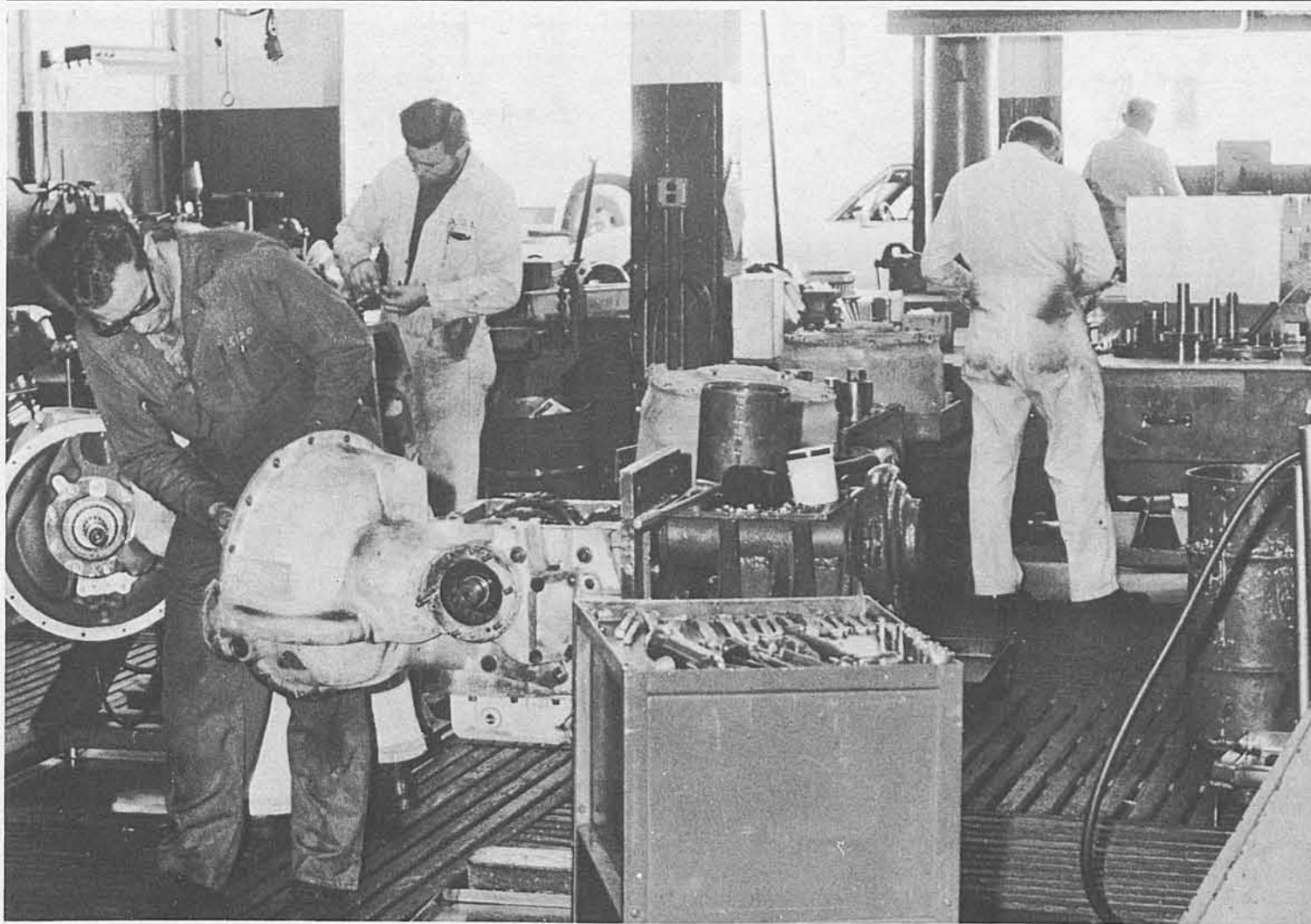
Director Charles E. Compton, former mayor and city councilman of Burbank, was appointed to the District's Board of Directors by the City Selection Committee. As one of this group's four members, he represents the Northwest Corridor which encompasses the cities of Burbank, Glendale, Hidden Hills and San Fernando.

A past president of the League of Independent Cities, Compton served on the Burbank City Council from 1961 to 1969, holding the post of Mayor for two terms. A realtor, he has been active in a number of civic and charitable activities, including the Optimists, Loyal Order of Moose, Shrine, High Twelve, Elks, and the Young Men's Christian Association.

On the District's Board of Directors Compton is a member of the Personnel Committee and the Surface Operations Committee.

Scatchard was affiliated with the System Development Corporation in Santa Monica as a Vice President-Controller and held financial positions with the Sundstrand Corporation and Richfield Oil Company.

A Southern California resident for many years, he and his wife reside in Glendale.



Overall view of South Park transmission repair section.



Norse C. Click, Mechanic "A", checks a rotor ring sleeve for wear.



John B. Barber, Mechanic "B", ins'talls an idler gear in a 5100 class transmission.



Charles J. Murrell, Mechanic "A", picks up a bevel gear from the parts shelf for use in a transmission he's working on.

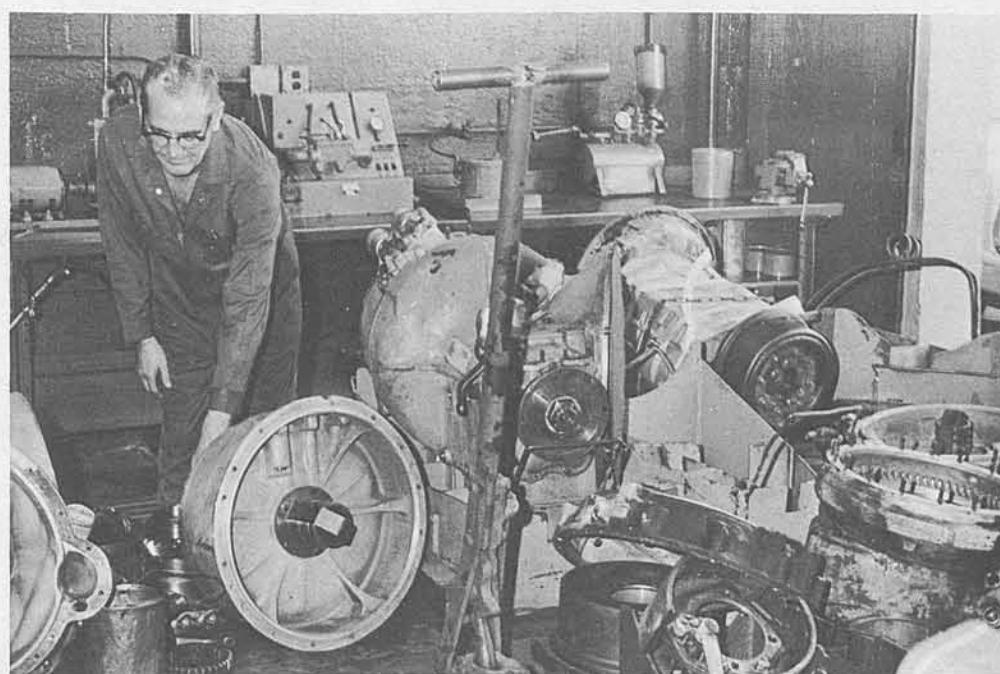
**Transmission Section  
-South Park-**

There isn't any kind of transmission work the District's South Park transmission repair section can't do. It is one of the best equipped in the nation and manned by men who can hold their own with any in the country.

The section is headed by Otto Dravener, general foreman with five men under him. These men: Leadman Charley W. Bauman; Charles J. Murrell; Norse Click; Dwayne F. Chisholm; and John B. Barber can repair between two and three transmissions a day. More if the repairs are minor.



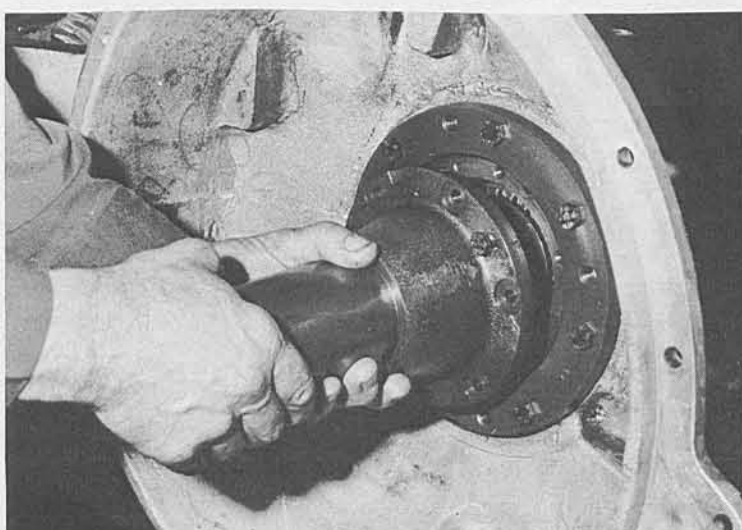
Removing the studs from the output end of a transmission.



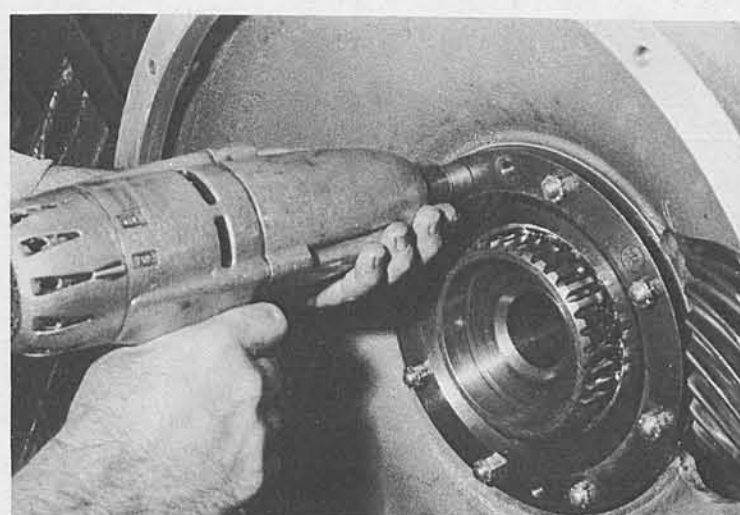
Norse C. Click, Mechanic "A", separates incoming transmission parts that need repairing.



Dwayne F. Chisholm, Mechanic "A", removes a flange off a 5500 class transmission.



Assembling a nose piece into a 5500 type transmission.



Disassembling bearing retainer of a VS-2 transmission.



Charley W. Bauman, Mechanic "A" Leadman, checking a lined clutch disc on a 6200 class transmission.

# Mini-bus

Continued from Page 1

Conceived as a public service project, the Mini-bus programs primary reason for being is to increase people-circulation and reduce congestion and air pollution in the Los Angeles Central Business District.

## PROMOTIONS

In recognition of their achievement and capabilities the following employees were recently promoted:

- RUBEN A. BAEZ**  
Utility "A" to Mechanic "C"
- MAUREEN F. ESQUIROZ**  
Temporary Division Stenographer Sick Relief to Division Stenographer Vacation Relief
- WILLIAM J. ESTERS**  
Operator-Extra Special Agent to Assistant Special Agent
- CHARLES M. FULKMAN**  
Print Shop Clerk to Multilith Operator
- FRANKLIN C. JACK**  
Utility "A" to Mechanic "C"
- TERRY S. KAMAKURA**  
Mechanic "B" to Mechanic "A"
- DIANE A. KRAFT**  
Temporary Schedule Typist to Temporary Division Stenographer Sick Relief
- JONAH LEIBOWITZ**  
Temporary Shop Clerk to Shop Clerk
- KENNA E. LEWIS**  
Mechanic "B" to Mechanic "A"
- KAREN J. MARTIN**  
Key Punch Operator to Kardex Clerk
- JUNIOR H. MCFARLAND**  
Mechanic "B" to Mechanic "A"
- ROLAND E. MELLON**  
Mechanic "A" to Mechanic "A" Leadman
- PHILIP F. PODRASKY**  
Multilith Operator to Print Shop Assistant Supervisor
- JESSIE H. RAMSEY**  
Utility "A" to Mechanic "C"
- RUTH H. ROGERS**  
Temporary Ticket Clerk to Information Clerk
- JOSEPH SALAZAR**  
Utility "A" to Electrician
- KATHLEEN N. SUTHERLAND**  
Mesenger Clerk to Temporary Payroll Clerk
- J. H. THOMASON, JR.**  
Junior Stock Clerk to Shop Clerk
- GAYLE R. ULBRICH**  
Secretary II to Accountant

### RTD Directors

- DR. NORMAN TOPPING,  
President
- THOMAS G. NEUSOM,  
Vice President
- Charles E. Compton
- A. J. Eyraud, Jr.
- Leonard S. Gleckman
- David K. Hayward
- Herbert H. Krauch
- Michael E. Macke
- Don. C. McMillan
- Douglas A. Newcomb
- Jay B. Price
- Virginia Rees, Secretary

Published by and for the employees of the Southern California Transit District.

- JACK R. GILSTRAP  
General Manager
- GEORGE F. GOEHLER  
Manager of Operations
- ROBERT R. SCHOLL  
Director of Public Information
- WILLIAM A. REASON  
Editor

- JESSE A. VARRIE**  
Shop Clerk to Supervisor of Reclamation & Surplus Material Equipment
- BONNIE L. WILLIAMSON**  
Addressograph Operator to Key Punch Operator
- WILLIAM G. WOODS**  
Mechanic "B" to Mechanic "A"

## RETIREMENTS

Climaxing many years of work in the field of public transportation, the following District employees recently retired:

- ALFRED BLADEL**  
Mechanic "A" Leadman  
Emp. 2-11-41/RETIRED: 9-17-71  
Years of Service: 30
- SHELBY M. COLLINS**  
Operator  
Emp. 11-19-42/RETIRED: 9-3-71  
Years of Service: 28
- NAPOLEON J. DIONNE**  
Operator  
Emp. 10-2-45/RETIRED: 10-1-71  
Years of Service: 26
- HENRY L. EMBREE**  
Supervisor  
Emp. 1-7-35 / RETIRED: 10-6-71  
Years of Service: 36
- ALFRED W. GHEZZI**  
Mechanic "A"  
Emp. 8-9-26/RETIRED: 9-24-71  
Years of Service: 45
- WILLIAM F. HAVILAND**  
Mechanic "A"  
Emp. 9-4-36/RETIRED: 9-30-71  
Years of Service: 35
- MOISES C. HERNANDEZ**  
Mechanic "A"  
Emp. 4-10-45/RETIRED: 9-14-71  
Years of Service: 25
- LUDWIG HERZ**  
Mechanic "A"  
Emp. 12-7-44/RETIRED: 9-25-71  
Years of Service: 26
- KENNETH T. HICKS**  
Operator  
Emp. 11-12-42/RETIRED: 9-30-71  
Years of Service: 28
- ALTON JONES**  
Utility "A"  
Emp. 2-5-47/RETIRED: 9-14-71  
Years of Service: 24
- VICTOR LACROUTS**  
Mechanic "A"  
Emp. 6-5-56/RETIRED: 10-1-71  
Years of Service: 15
- WILLIAM A. LAIRD**  
Trafficman  
Emp. 4-17-45/RETIRED: 9-21-71  
Years of Service: 26
- GEORGE S. LEROY**  
Information Clerk  
Emp. 6-24-52/RETIRED: 9-30-71  
Years of Service: 19
- EMIL A. McCURDY**  
Manager of Stores  
Emp. 3-21-44/RETIRED: 9-30-71  
Years of Service: 27
- JOSEPH METOYER**  
Mechanic "A"  
Emp. 12-12-35/RETIRED: 9-24-71  
Years of Service: 35
- DOROTHY M. NYE**  
Stenographer  
Emp. 6-19-52/RETIRED: 9-19-71  
Years of Service: 19

## Discount Tickets

Discount tickets are currently available in the District's Industrial Relations Office at 1060 S. Broadway on a first come first serve basis.

Information on the tickets can be obtained by calling 749-6977, ext. 269 or 288.

Regularly available are:

- KNOTTS BERRY FARM  
Buena Park
- DISNEYLAND 1971  
Anaheim
- MARINELAND  
Palos Verdes Estates
- MOVIELAND WAX  
MUSEUM
- PALACE OF LIVING ART  
Buena Park



RETIREES HONORED—(TOP LEFT) Manager of stores Emile A. McCurdy shows off 1944 employment photo during retirement ceremonies at South Park. (TOP RIGHT) Operator Edith Swanson makes her last trip down the aisle before retiring. (BOTTOM LEFT) Operator Leslie B. Wright receives retirement scroll from division manager Lloyd H. Brughmann. (BOTTOM RIGHT) Assistant print shop supervisor Harold E. Whitney (center), chats with Margaret Carr and Al Latvalla during his retirement ceremonies in the District's print shop.

- ROBINSON PAGEL**  
Cash Clerk  
Emp. 5-45-4/RETIRED: 9-16-71  
Years of Service: 26
- JAMES C. POE**  
Operator  
Emp. 9-24-53/RETIRED: 9-30-71  
Years of Service: 18
- ROBERT C. RUPE**  
Operator  
Emp. 9-19-42/RETIRED: 9-18-71  
Years of Service: 29
- EDITH P. SWANSON**  
Operator  
Emp. 7-18-45/RETIRED: 9-15-71  
Years of Service: 26
- HAROLD E. WHITNEY**  
Assistant Supervisor Print Shop  
Emp. 5-27-43/RETIRED: 9-30-71  
Years of Service: 28
- RAYMOND A. WINER**  
Operator  
Emp. 6-28-38/RETIRED: 9-30-71  
Years of Service: 33

## VITAL STATISTICS

In memoriam to employees who have devoted much of their lifetime in a profession designed to move people.

- FREDERICK A. ANDERSON**  
Operator  
9-25-71/INDEFINITE LEAVE: 7-1-70  
Years of Service: 18
- ROYAL J. CAVE**  
Operator  
9-13-71/RETIRED: 6-1-53  
Years of Service: 26
- HOWARD MORRIS**  
Conductor  
9-30-71/RETIRED: 6-1-61  
Years of Service: 27



NEW SIGNS SHOW MINI-BUS STOPS AND ROUTE — Special signs, the same color as the Mini-buses, complete with a map of the bus route, have been installed along the Central Business District route of the new Mini-buses. Herbert Johnson and Pedro M. Lugan (left to right) were members of District crews who installed the new signs.

Southern California Rapid Transit District  
1060 South Broadway, Los Angeles 90015

U. S. POSTAGE  
paid  
BULK RATE  
Los Angeles, Calif.  
Permit No. 28201