

SOUTHERN CALIFORNIA RAPID TRANSIT DISTRICT

RTD Acts To Continue Rapid Transit Corridor Selection

RTD's Board of Directors acted May 2 to insure continued orderly programming for additional rapid transit development in the Los Angeles area.

Members of the RTD Board authorized the monitoring and evaluating, required by the federal government, of the El Monte-Los Angeles Busway operation once service commences in the fall.

At the same time the public agency officials approved the formal filing of a federal grant application for the monies necessary to complete the coordinated rapid transit effort being undertaken jointly by the RTD and the City and County of Los Angeles.

Required by the Urban Mass Transportation Administration before federal participation in transit projects becomes a reality, the immediate effort will lead to the selection of a corridor, or corridors for initial high-speed rapid transit construction.

Dr. Norman Topping, RTD president, said the analysis to be undertaken with the grant funds will provide the following data:

—An analysis of the specific available transit financing resources at the local, state and federal levels.

—A description of the kind of rapid transit system most suitable for the area.

—A determination as to where the rapid transit routes should be built—and the priorities.

In addition, a clear picture of the effect of rapid transit development on the citizenry will be obtained, along the details on the environmental impact of rapid transit on the various areas selected for development.

"Were it not for the information developed for the 1968 rapid transit proposal submitted area voters," noted Jack R. Gilstrap, RTD's general manager, "a much more exhaustive and expensive undertaking would be necessary at this time."

Completion of the action program, transit agency officials explained, will make it possible to file an application for construction monies.

The use of existing railroad facilities for commuter service, along with the development of an expanded bus system, also will be examined.

Another element of the activity will be the programming to insure the ability of Southern California to meet 1974 transit grant standards being established by UMTA for both bus and rapid transit services.

Continued on Page 2

Busway Generates Estimated 550 New Jobs Locally

The State-RTD 11-mile El Monte-Los Angeles Busway now under construction in the median of the San Bernardino Freeway is of prime importance to local labor and business in Southern California.

It is estimated that some 550 men will be employed during the peak periods of construction.

Seven miles of the 11 miles of busway lanes are expected to be in operation by the Fall of 1972 with construction continuing through most of 1973 on the busway stations.

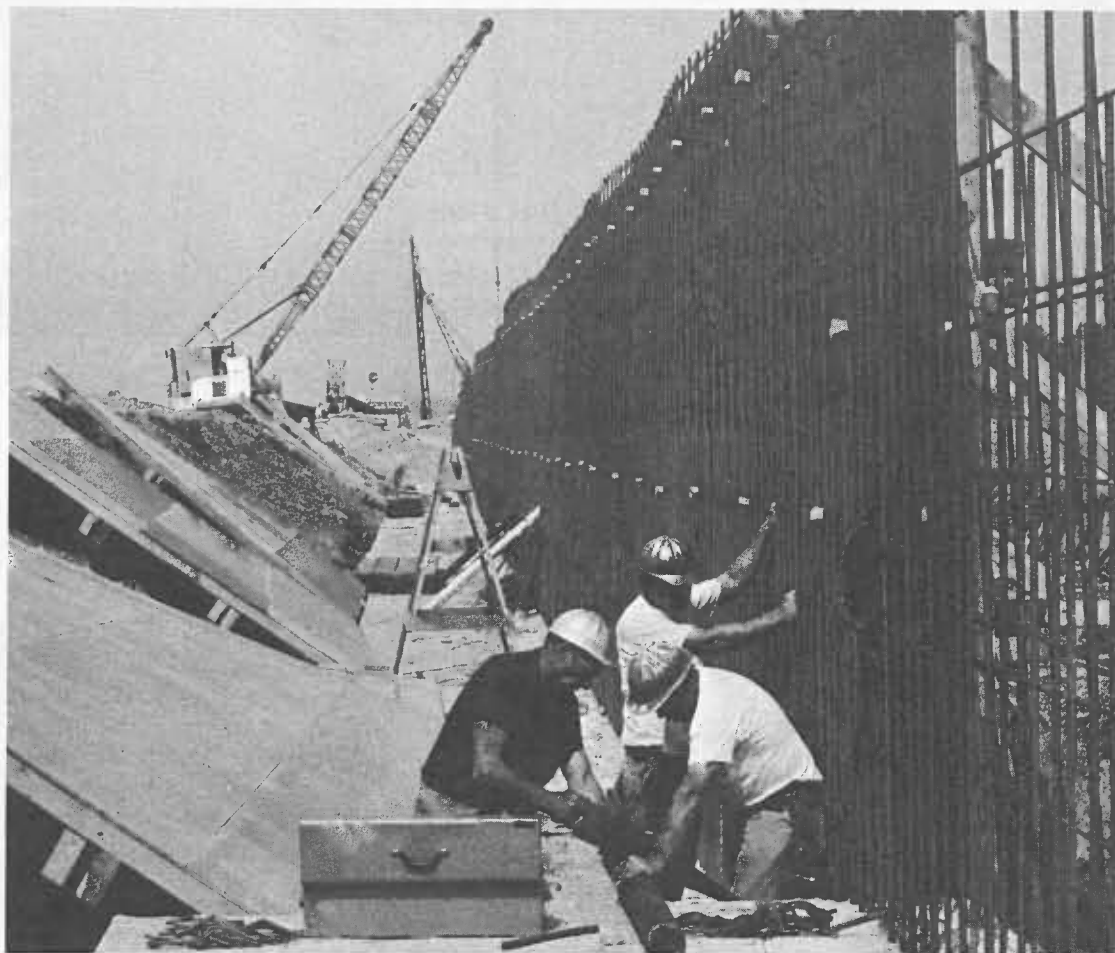
Construction figures covering the busway lanes are: man hours (labor, during construction) 900,000; structure and miscellaneous steel 475 tons; reinforced steel 1,600 tons; concrete 22,000 cubic yards; excavation 142,000 cubic yards; and timber one million board feet.

Many different types of materials produced by the labor force employed by local business and industry will also be required. Materials such as rock and sand, traffic signal equipment, asphalt pavement material, road oils, buses and bus servicing equipment.

Line 133 to Serve Senior Citizen Housing Facility

A route change has been made on Line 133 enabling District buses to serve a senior citizen housing facility at Orange and Franciscuito Avenues in West Covina.

Buses will no longer operate along Amar Road between Orange and Sunset Avenues. The changeover will not inconvenience anyone as there are no bus stops on Amar Road between the two avenues.



STATE ASSISTS — A State contracted firm puts in a retaining wall to reinforce the Busway access road along the northern portion of the Busway. Workers tie off steel reinforcing bars and prepare to lay forms for the concrete walls.

Preliminary Busway Station Construction Begins

First phase construction of the El Monte-Los Angeles Busway Station is underway. Excavation started May 1 with Larry Jacoby General Engineering Contractor receiving the contract to remove unsuitable material from the site

and to place suitable fill needed for the Station foundation. Contracts for the construction of the Station will go up for bidding shortly with construction expected to begin on or before August 1.

(More photos on Page 2)

ACME Supports Foundation For The Junior Blind

Norman Kaplan, Executive Director of the Foundation for the junior blind thanks RTD's ACME Club members for their contributions to the foundation.

Kaplan noted in his letter, "... because of your contributions, together with the dollars given us by many others, is making it possible for over 700 blind children to take part in activities that would otherwise be denied to them because of their sightlessness.

"Our youngsters," he continued, "are having the time of their lives while learning to cook, operate their own 'ham' radio, play a musical instrument, plant their own garden, reading the latest issues of

Continued on Page 2

RTD Urges Defeat of Watson Amendment and Proposition 9

The defeat of Proposition 9 and the Watson Amendment on the June and November ballots is urged by RTD's Board of Directors. They declare that either issue could seriously affect Los Angeles area public transit operations if passed.

In a unanimously adopted resolution, the RTD board said approval by the voters of Proposition 9 would bring an immediate and almost total elimination of bus services within the District.

In a second resolution, the transit agency directors said that should the voters pass the Watson Amendment in November, the District would be forced to drastically increase bus fares.

In unanimously approving the Proposition 9 resolution, the RTD board said:

"Proposition 9 would seriously impair the District's operations because the requirement it places on diesel fuel, used in District buses, is unrealistic in view of the present state of the art, and cannot be met by the District's petroleum suppliers."

"The imposition of these diesel fuel requirements would result in an immediate and almost total elimination of bus service within the District."

The Watson amendment resolution declared:

"The District has the responsibility of carrying 700,000 riders daily, a great

Continued on Page 2

Donald Gardner Joins RTD's Engineering Staff

Donald M. Gardner has been appointed senior engineer in the District's Engineering Department.

Gardner will be involved in mass transit system development and design under the District's Chief Engineer.

A registered electrical engineer, Gardner comes to the District with an extensive engineering background dating back to 1937 following graduation from Los Angeles City College with a degree in electrical engineering.

Continued on Page 2

**SIGN UP FOR
A
SAVINGS
BOND
NOW**



ABOVE: RTD engineers Neil Richards and Elmo Douglass talk with State engineer Jim Needham about the Busway Station beside the newly erected sign announcing the project. **RIGHT:** Crane lowers forms for retaining wall.



ABOVE: Overall view of the excavation work underway at the El Monte - Los Angeles Busway Station at El Monte. **LEFT:** Unsuitable material is removed from the building site to prepare a suitable foundation for the two-story station. The station is expected to be operational in 1973.



RTD Acts

Continued from Page 1

Dr. Topping said the combined projects have been made possible by the pending availability — for the first time — of public fund support for transit development on a continuing basis.

Gasoline will become subject to the general sales tax next July 1, providing the monies which will make it possible to qualify for federal matching funds to place rapid transit on the construction track at an accelerated pace, Dr. Topping noted, providing sufficient federal matching support can be obtained.

Members of the District Board, in a resolution, said "the District is committed to an action program culminating in the operation of a major rapid transit system in the Los Angeles region.

Projects to be undertaken, Gilstrap said, will be coordinated by the Southern California Association of Governments, the agency designated by UMTA to oversee regional transportation planning in the Los Angeles area.

The RTD Board authorized the budgeting for \$629,666 for the effort with additional funds to be forthcoming from the federal government once the grant applications are approved.

RTD Urges Defeat

Continued from Page 1

many of these passengers consist of school children, elderly, the blind, the infirm, and the economically disadvantaged."

"Substantially increased fares would tend to deny educational, employment, health care, cultural and recreational opportunities to many citizens."

Proposition 9 provides for the imposition of stringent standards with respect to the content of sulphur in any form in diesel fuel, at the same time imposing other regulations concerning the petroleum and related fields.

The Watson Amendment would place a ceiling on property taxes at 1.75 per cent of market value. The amendment would also alter the distribution of the sales tax, as presently constituted, including receipts scheduled to be collected from the sales tax of gasoline commencing July 1, 1972. Accordingly, public transit agencies would not be able to draw on the additional sales tax revenues resulting from the lifting of the exemption now enjoyed by gasoline.

ACME

Continued from Page 1

Wee Wisdom, Boy's Life, Seventeen, Reader's Digest or a new book. Just as they have fun during these 'learning' activities, they learn during our 'fun' activities — such as playing baseball and archery by sound and joining in all the sports and games at the Foundation.

"If you could see these happy blind children riding a bike, roller skating or delightedly learning to dance; if you could watch them in action as they take advantage of the many of activities that are a part of our regular program — you would know why we're so grateful to you."

Gardner

Continued from Page 1

Prior to coming to RTD he was affiliated with WED Enterprises, a division of Walt Disney Productions, and was in charge of their Disneyland California and Florida transportation system design and construction.

April Operator of The Month



BEEN THERE BEFORE—For a remarkable third time, Jacob B. Yarnell has received "Operator of the Month" honors. District Director Leonard Gleckman of West Covina is shown bestowing the plaque at the board's May 2 meeting. The April winner has been delivering friendly service for 31 years, and is a recipient of a 25-year safety award. Yarnell is known for his special courtesy to senior citizens. He resides in South Pasadena.



PARK/RIDE PIONEERS—Downtown Los Angeles businessmen celebrate success of Park/Ride service established by RTD's board of directors. The program offers easy access to Convention Center parking with a quick Mini-bus trip to the Central Business District. Spaces are available for individuals or groups on a limited first come, first serve basis. Now operating from 7 a.m. to 7 p.m., the service will commence at 6:30 a.m. starting June 1. Joining Jack R. Gilstrap, RTD general manager, in calling attention to the Park/Ride operation are (left to right) Ted Wootton, vice president, Bank of America; G. M. Mumford, manager, employee relations, Atlantic Richfield Co.; Robert Dunn, controller, Peat, Marwick, Mitchell & Co.; M. D. McDermott, vice president-deputy controller, Bank of America; Guy Bennett, personnel manager, Latham & Watkins; Byron Trimble, director, Los Angeles Convention Center; and Ray Lawson, assistant vice president, Bank of America.



Overall view of the key punch area of the 9th floor data processing section of the District's Comptroller-Treasurer-Auditor Department.



Juan Castell, relief tab operator, operates the 514 reproducer.



Helena Bates, supervisor, EDP Accounting of Data Processing and assistant Shirley A. Crise, look over a new computer program to be set.

Electronic Data Processing

EDP Accounting, a segment of the District's Comptroller-Treasurer-Auditor Department, is under the supervision of Helena Bates.

Twenty trained specialists make up the work force whose District function is "service." Everything from payroll, elaborate reports to envelope addressing is done in this computer oriented section.

Information is retained on computer tapes or IBM cards for future reference or comparison.



Gloria Fabiano, key punch operator, punches payroll adjustments on the 029 keypunch.



Steve Gordon (standing) and Dene Rachuy, systems analysts, write a program for a Mini-bus survey.



Margie Elkin, data processing operator, sets up the 1403 computer printer for a printout of employee names and addresses.



Alma Potter, data processing operator, uses the 088 collator to merge payroll.



Sato Kurahashi, data processing operator, runs the 084 sorter.



Wanda Amburgey, key punch operator, types Operation Fund checks on a keypunch typewriter.

RETIREMENTS

Climaxing many years of work in the field of public transportation, the following District employees recently retired:

ARISTIDE F. BETTAREL
Operator
Emp. 3-1-48/RETIRED: 5-4-72
Years of Service: 24

ADOLPHE O. DRAVINER
Equipment Foreman II
Emp. 10-1-25/RETIRED: 4-26-72
Years of Service: 46

BERNARD M. ULMEN
Operator
Emp. 6-10-42/RETIRED: 5-8-72
Years of Service: 29

VITAL STATISTICS

In memorium to employees who have devoted much of their lifetime in a profession designed to move people.

GEORGE G. KIRSTEIN
Junior Stock Clerk
7-11-71/RETIRED: 6-1-59
Years of Service: 13

W. E. WITHERSPOON
Operator
4-27-72/INDEF. LEAVE: 2-8-72
Years of Service: 29

PROMOTIONS AND REASSIGNMENTS

In recognition of their achievement and capabilities the following employees were recently reassigned.

CHARLES W. BAUMAN
Mechanic "A" Leadman to Equipment Foreman II

MICHAEL E. BEALS
Operator-Extra Schedule Checker to Schedule Checker

C. H. CANTRELL
Operator-Extra Division Clerk to Division Clerk

ROGER L. CARTER
Draftsman I to Draftsman II

HARVEY R. COLLINS
Utility "A" to Maintainer "C"

JACK M. ENSIGN
Supervisor-Extra Dispatcher to Dispatcher

BOB L. FALVEY
Equipment Foreman II to Equipment Superintendent I

WALTER R. FRANKLIN
Operator-Extra Division Clerk to Division Clerk

GEORGE R. SYLVA
Operator-Extra Schedule Checker to Schedule Checker

JAMES K. WHITE
Operator-Extra Division Clerk to Division Clerk

RALPH WILSON
Operator-Extra Division Clerk to Staff Assistant I

GEORGE R. SYLVA
Operator-Extra Schedule Checker to Schedule Checker

JAMES K. WHITE
Operator-Extra Division Clerk to Division Clerk

RALPH WILSON
Operator-Extra Division Clerk to Staff Assistant I

JAMES K. WHITE
Operator-Extra Division Clerk to Division Clerk

RALPH WILSON
Operator-Extra Division Clerk to Staff Assistant I

RALPH WILSON
Operator-Extra Division Clerk to Staff Assistant I

RALPH WILSON
Operator-Extra Division Clerk to Staff Assistant I

RTD Directors
DR. NORMAN TOPPING, President
THOMAS G. NEUSOM, Vice President
Charles E. Compton
A. J. Eyraud, Jr.
Leonard S. Gleckman
David K. Hayward
Herbert H. Krauch
Michael E. Macke
Don. C. McMillan
Douglas A. Newcomb
Jay B. Price
Virginia Rees, Secretary

Published by and for the employees of the Southern California Transit District.

JACK R. GILSTRAP
General Manager
GEORGE F. GOEHLER
Manager of Operations
ROBERT R. SCHOLL
Director of Public Information
WILLIAM A. REASON
Editor

Six New Stops Added to Line 125's Local Service

The District has bolstered Palos Verdes Peninsula bus service with the addition of six local stops on Line 125 between Rolling Hills Estates and Marineland of the Pacific.

The stops were installed to accommodate employees and residents in the area, according to Jack Gilstrap, RTD general manager.

Southbound on Hawthorne Boulevard from Grayslake Road (Rolling Hills Estates), the new stops are Gravia, Altamira, Eddinghill, Indian Valley, Crest Road, and Los Verdes. Northbound the stops are Los Verdes, Crest Road, Indian Valley, Seamount, Altamira, and Gravia.

Line 125 services Marineland three times every day, including Freeway Flyer departures from the Sixth and Los Angeles Street downtown terminal at 11:59 a.m. and 12:40 p.m. The freeway trip takes 63 minutes.

Scribes Needed For RTD Flyer

Many things are happening every day on transit property that would be of interest to RTD Flyer readers.

Some are humorous and unusual and fellow employees would like to know and see them in their newspaper. An employee might have solved a problem that may still be bothering others — or found an easy way of doing something, he can share his findings through the RTD Flyer.

Those interested in writing for the RTD Flyer should contact the District's Public Information Office in Room 500 and ask for Bill Reason. He can also be reached by telephone on extension 431.

Discount Tickets

Discount tickets are currently available in the District's Industrial Relations Office at 1060 S. Broadway on a first come first basis.

Information on the tickets can be obtained by calling 749-6977, ext. 269 or 288.

- Regularly available are:
- KNOTTS BERRY FARM Buena Park
 - DISNEYLAND 1971 Anaheim
 - MARINELAND Palos Verdes Estates
 - MOVIELAND WAX MUSEUM Buena Park
 - MAGIC MOUNTAIN Valencia
 - LION COUNTRY SAFARI Irvine Ranch

Friends Say Goodbye . . .

Hundreds of RTD employees said goodbye to Max Rise Thursday, May 4 at retirement ceremonies in the District's downtown Board Room.

During brief farewell speeches, George Goehler, manager of operations and John Wilkens, newly appointed General Superintendent of Transportation, commended Max Rise's dedication to the needs of public transportation in the District's four-county operating area. Wilkens succeeds Rise as General Superintendent of Transportation.

All wished him a happy retirement and pleasant journey on his camping trips.



IT'S BEEN GREAT — Max Rise tells long-time friends George Goehler (right) and John Wilkens (center) "it's been great, but now I want to get out and see some country."

(IMPRINT OR TYPE EMPLOYEE'S NAME HERE) (Check or Badge Number) (Dept. or Section)

I hereby authorize my employer _____ (Name of company or organization) to save \$_____ from my pay each payday, beginning _____, 19____.

When these savings equal the cost of the bond I check here, have bond issued to me registered as shown below.

\$50 Bond Cost \$37.50 \$75 Bond Cost \$56.25 \$100 Bond Cost \$75.00 _____ (Other size bond) \$500 Bond Cost \$375

Please register my bonds in this manner:

OWNER
Mr. _____
Mrs. _____
Miss. _____ (First) (Middle) (Last) (Social Security No.)
Address _____ (Street) _____ (City) _____ (State) _____ (Zip)

CO-OWNER OR **BENEFICIARY** (Check only one, if either is desired)
Mr. _____
Mrs. _____
Miss. _____ (First) (Middle) (Last) (Social Security No.)

NOTE: The Purchaser may, if desired, designate an individual as co-owner or beneficiary to be named on the Bond—but not both. Married women should use given name. (Mrs. Mary L. Smith, not Mrs. John A. Smith.)

This authorization will continue until I advise you to change or cancel it.

(Date) (Signature of Employee-Purchaser)



RTD RECOMMENDS BUS STOP CHANGES IN MANHATTAN BEACH — Vic Muniz and Frank Lonning, stops and zones section of the Transportation Department, met with members of the Manhattan Beach traffic safety committee to recommend bus stop changes in Manhattan Beach. The changes were recommended at the Committee's May 5 meeting and would improve safety conditions at 34 intersections as well as improved passenger loading and unloading. The committee approved the change and sent a recommendation to the City Council to approve the changes.

Southern California Rapid Transit District
1060 South Broadway, Los Angeles 90015

U. S. POSTAGE
paid
BULK RATE
Los Angeles, Calif.
Permit No. 28201