

Photos: Gold Line Foothill Extension's opening day

BY [STEVE HYMON](#) , MARCH 5, 2016

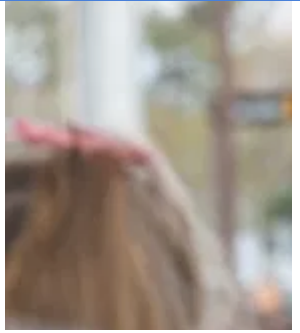
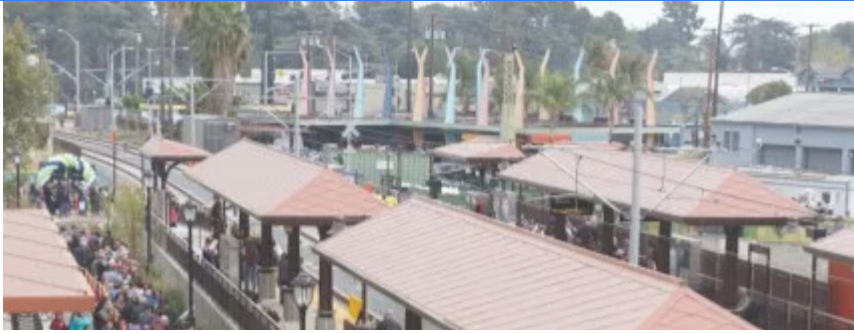


Howard Sears, of Arcadia, was on the last streetcar to run in the Foothill Cities in 1951 as a young newspaper reporter — reporting the Pacific Electric's demise. At 86, he's back on the rails in the San Gabriel Valley. Welcome aboard, Howard. Welcome aboard, everyone.



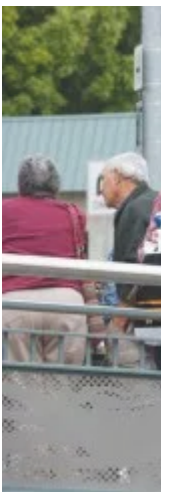
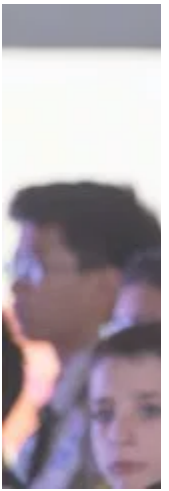
The big ribbon cutting at Duarte/City of Hope Station before trains started running.

More photos below. [Click to see larger versions](#) — you may be in one of them.

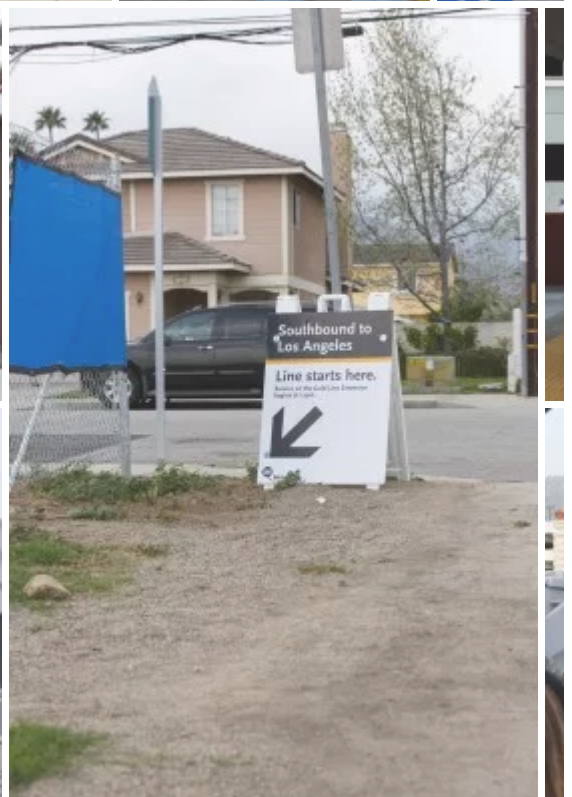


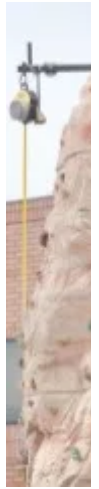


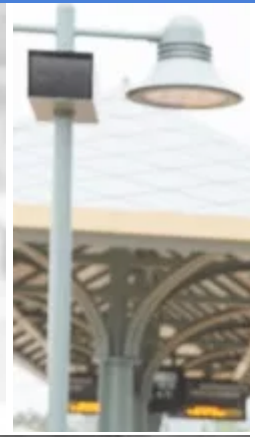














The morning was devoted to the speeches and platitudes. And then, shortly before noon, the big ribbon cutting finally happened at Duarte/City of Hope Station.

Yes, there were lines at the stations and a few bumps in the service because of the crowds on Saturday. But everything seemed to work out by later in the afternoon — and most people I spoke to seemed pleased that Metro Rail was extending deeper into the San Gabriel Valley.

The turnout was BIG. Metro estimates at least 20,000 boardings will have taken place at the six new stations on Saturday.

A huge THANK YOU to the taxpayers whose sales taxes built this project — the first to be funded by the Measure R sales tax increase approved by Los Angeles County voters in 2008. We hope that you can use and enjoy the Gold Line for many years and decades to come.

A huge congratulations and thank you to my friends at the [Gold Line Foothill Extension Construction Authority \(//foothillgoldline.org/\)](http://foothillgoldline.org/), whose

hard work and doggedness got the project built — and finished on time and on budget. CEO Habib Balian and my cohorts in communication, Lisa Levy Buch and Albert Ho (he's the 'I' in [I Will Ride](https://twitter.com/IWillRide) ([//twitter.com/IWillRide](https://twitter.com/IWillRide))), have been awesome in terms of keeping the public informed as the extension took shape these past few years.

Also, a nod to many colleagues at Metro in Rail Operations, Community Relations, Communications, Marketing, Creative Services and Government Relations — and anyone else I'm forgetting — who had a hand in getting service up and running and planning today's events.

Finally, for those not attendance today at the opening ceremony, more than a few elected officials said they want to see the Gold Line extended to Claremont and Montclair. The Construction Authority is already deep into the planning and design of that segment. The funding may not yet be secured, but the desire and political will sure seems to be there. Check out [the Authority's website](http://www.foothillgoldline.org/construction_phases/glendora_to_montclair/) ([//www.foothillgoldline.org/construction_phases/glendora_to_montclair/](http://www.foothillgoldline.org/construction_phases/glendora_to_montclair/)) for more info.

Other posts about the Gold Line extension:

[Everything you need to know about riding the new Gold Line extension to Azusa](https://thesource.metro.net/2016/03/02/qa-everything-you-need-to-know-about-the-gold-line-extension-to-azusa/) ([//thesource.metro.net/2016/03/02/qa-everything-you-need-to-know-about-the-gold-line-extension-to-azusa/](https://thesource.metro.net/2016/03/02/qa-everything-you-need-to-know-about-the-gold-line-extension-to-azusa/)).

[Photo essay: the cities and people of the Gold Line Foothill Extension](https://thesource.metro.net/2016/03/04/photo-essay-the-cities-of-the-gold-line-foothill-extension/) ([//thesource.metro.net/2016/03/04/photo-essay-the-cities-of-the-gold-line-foothill-extension/](https://thesource.metro.net/2016/03/04/photo-essay-the-cities-of-the-gold-line-foothill-extension/))

[Video: Gold Line to Azusa from the operator's cab](https://thesource.metro.net/2016/02/17/video-go-for-a-ride-on-the-gold-line-extension-to-azusa/) ([//thesource.metro.net/2016/02/17/video-go-for-a-ride-on-the-gold-line-extension-to-azusa/](https://thesource.metro.net/2016/02/17/video-go-for-a-ride-on-the-gold-line-extension-to-azusa/))

Gold Line extension photography:

Opening day rides, riders and

events: <https://www.flickr.com/photos/metrola/albums/72157665483448436> ([//www.flickr.com/photos/metrola/albums/72157665483448436](https://www.flickr.com/photos/metrola/albums/72157665483448436))

Opening day breakfast and opening ceremony (elected officials, etc): <https://www.flickr.com/photos/metrola/albums/72157663201775544> ([//www.flickr.com/photos/metrola/albums/72157663201775544](https://www.flickr.com/photos/metrola/albums/72157663201775544))

Gold Line Extension train testing

pics: <https://www.flickr.com/photos/metrola/albums/72157664599541670> ([//www.flickr.com/photos/metrola/albums/72157664599541670](https://www.flickr.com/photos/metrola/albums/72157664599541670))

Photos of Foothill Cities, businesses, residents, attractions, offbeat

pics: <https://www.flickr.com/photos/metrola/albums/72157665300408681> ([//www.flickr.com/photos/metrola/albums/72157665300408681](https://www.flickr.com/photos/metrola/albums/72157665300408681))

To download from Flickr, click on an image and then click on down facing arrow at bottom right of image and select size needed.

Related



Gold Line to Azusa opens March 5; 10 things to know
October 22, 2015
In "Policy & Funding"



A brief overview of rail history in the Foothill Cities
February 23, 2016
In "Transportation News"



A Gold Line Foothill Extension Q&A

A Gold Line Foothill Extension Q&A
June 25, 2010
In "Projects"

📁 CATEGORIES: [Go Metro](https://thesource.metro.net/category/lifestyle/go-metro-lifestyle/) ([//thesource.metro.net/category/lifestyle/go-metro-lifestyle/](https://thesource.metro.net/category/lifestyle/go-metro-lifestyle/)), [Policy & Funding](https://thesource.metro.net/category/policy_funding/) ([//thesource.metro.net/category/policy_funding/](https://thesource.metro.net/category/policy_funding/)), [Projects](https://thesource.metro.net/category/projects/) ([//thesource.metro.net/category/projects/](https://thesource.metro.net/category/projects/))

🏷️ TAGGED AS: [Arcadia](https://thesource.metro.net/tag/arcadia/) ([//thesource.metro.net/tag/arcadia/](https://thesource.metro.net/tag/arcadia/)), [AZUSA](https://thesource.metro.net/tag/azusa/) ([//thesource.metro.net/tag/azusa/](https://thesource.metro.net/tag/azusa/)), [Claremont](https://thesource.metro.net/tag/claremont/) ([//thesource.metro.net/tag/claremont/](https://thesource.metro.net/tag/claremont/)), [Duarte/City of Hope](https://thesource.metro.net/tag/duartecity-of-hope/) ([//thesource.metro.net/tag/duartecity-of-hope/](https://thesource.metro.net/tag/duartecity-of-hope/)), [Eric Garcetti](https://thesource.metro.net/tag/eric-garcetti/) ([//thesource.metro.net/tag/eric-garcetti/](https://thesource.metro.net/tag/eric-garcetti/)), [gold line extension](https://thesource.metro.net/tag/gold-line-extension/) ([//thesource.metro.net/tag/gold-line-extension/](https://thesource.metro.net/tag/gold-line-extension/)), [Gold Line Foothill Extension Construction Authority](https://thesource.metro.net/tag/gold-line-foothill-extension-construction-authority/) ([//thesource.metro.net/tag/gold-line-foothill-extension-construction-authority/](https://thesource.metro.net/tag/gold-line-foothill-extension-construction-authority/)), [Gold Line opening day](https://thesource.metro.net/tag/gold-line-opening-day/)

[Gold mine opening 2017](https://thesource.metro.net/tag/gold-mine-opening-2017/) ([//thesource.metro.net/tag/gold-mine-opening-2017/](https://thesource.metro.net/tag/gold-mine-opening-2017/)), [Hilda Solis](https://thesource.metro.net/tag/hilda-solis/) ([//thesource.metro.net/tag/hilda-solis/](https://thesource.metro.net/tag/hilda-solis/)), [Irwindale](https://thesource.metro.net/tag/irwindale/) ([//thesource.metro.net/tag/irwindale/](https://thesource.metro.net/tag/irwindale/)), [John Fasana](https://thesource.metro.net/tag/john-fasana/) ([//thesource.metro.net/tag/john-fasana/](https://thesource.metro.net/tag/john-fasana/)), [Mark Ridley-Thomas](https://thesource.metro.net/tag/mark-ridley-thomas/) ([//thesource.metro.net/tag/mark-ridley-thomas/](https://thesource.metro.net/tag/mark-ridley-thomas/)), [Measure R](https://thesource.metro.net/tag/measure-r/) ([//thesource.metro.net/tag/measure-r/](https://thesource.metro.net/tag/measure-r/)), [Monrovia](https://thesource.metro.net/tag/monrovia/) ([//thesource.metro.net/tag/monrovia/](https://thesource.metro.net/tag/monrovia/)), [photos](https://thesource.metro.net/tag/photos/) ([//thesource.metro.net/tag/photos/](https://thesource.metro.net/tag/photos/)), [San Gabriel Valley](https://thesource.metro.net/tag/san-gabriel-valley/) ([//thesource.metro.net/tag/san-gabriel-valley/](https://thesource.metro.net/tag/san-gabriel-valley/))

 15 replies >

Woo hoo! On to Cucamonga!

You mean cacamonga 😬

Hi Steve — nice chatting with you on board today. Your photo of Loyal Reader Larry was the big finish to an exciting day. Thanks!

You're welcome and great to meet you! Hope you enjoyed the rides today!

Steve Hymon
Editor, The Source

ROFL! Some great photos, Steve!

Seriously, it reminds me of several other Metro opening days I've been to (say, crush loads) and why I did Not attend today!

I need an excuse to visit one of the new stations after the next few days of Rain blow through

I hope Metro learned a lesson today and will have the supplementary shuttle buses back for the opening of Expo Phase 2 and any future openings.

Thanks for helping to create and publicize a great event, Steve! Everyone I talked to onboard was excited and happy

to be a part of such a great day, even if the three cars trains were packed for the majority of the day. One question, do you know if metro will be giving away or selling those gold hats staff were wearing yesterday? They would definitely be a great free-advertiser for the extension and I sure want one...

Hey Xander;

On behalf of my colleagues who did the heavy lifting, you're welcome!

Good question on the hats. I'll ask and see if they have any plans to sell. I know they ordered enough for staff working the event and barely had enough or ran out (I had to grovel for mine). But I'll let my colleagues know people are probably interested.

Thanks for coming out and riding yesterday!

Steve Hymon
Editor, The Source

Those weren't "streetcars" in Monrovia in 1951– they were electric interurban cars. Bigger, heavier, faster...
Oh well, I suppose no one really cares.

📍

[...] Gold Line Is Open (LAT, Hoff the Beaten Path, The Source) ...First/Last Mile Choices (Pasadena Star News) [um... bike?] ...Then Freeway Truck [...]

I wanted to take the gold line to work today, but parking lot at APU/Citrus was already full by 7:30am. Also passed at least 8 cars looking for parking as well during the 2 minutes I was in the parking structure. I may try again tomorrow, but don't have high hopes of this being a regular commute option for me if this is the way it's going to be.

I was there around 7:40am and no parking, I had to drive to LA 😞

This is why light rail is a poor option for the San Gabriel Valley. Not everyone is going to be able to drive to the station. For light rail to work, it needs to get people to and from the stations in other ways. If you want local parking for each station, Metrolink is a better option.

Maybe drive down to the one on Azusa Ave.

📍

[...] here to see the full photo gallery and [...]