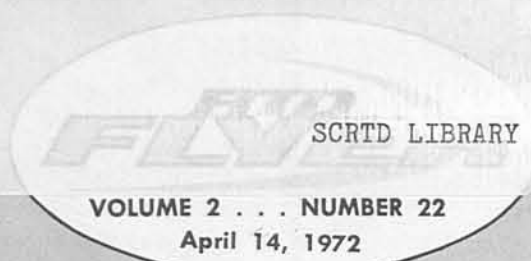


64-1418

1865658



SOUTHERN CALIFORNIA RAPID TRANSIT DISTRICT

"DRIVE WITH PRIDE"

Division 10 First In Final Judging Of RTD Safety Contest

Division 10 Operators were awarded permanent retention of the "Drive With Pride" contest's first place trophy April 6. They also received a fried chicken dinner courtesy of RTD with Transit Casualty safety supervisors catering the affair.

The contest period was from April 1, 1971 to January 31, 1972 and Division 10 completed the year with an overall reduction in operational accidents of 25.13% as compared to the contest year of 1970-71.

On April 7 permanent retention of the second place trophy was awarded to Division 2 with a reduction of 19.37% and Division 9-13 received the third place trophy with a reduction of 17.57%.

Following brief talks at the dinner from management, and representatives of local law enforcement agencies, and Transit Casualty, Division 10 operator Dave White was presented the first place trophy in behalf of his division by acting United Transportation Union division representative Robert D. Moore.

Among RTD officials present for the occasion were George Goehler, manager of operations; Max Rise, superintendent of transportation; John Wilkens, director of industrial relations; and Jack Stubbs, administrative assistant-director of governmental affairs and special projects.

The "Drive With Pride" contest was established in 1969 through the combined efforts of RTD, UTU and Transit Casualty to encourage transit operators to drive more defensively.

The result is evidenced in the significant reduction of accidents. Reduction of 6.3% was reported in traffic and passenger accidents for 1971.

"This could only be achieved," remarked Goehler, "by the safety consciousness of RTD Operators — and the men and women who support them."

Long Beach Ticket Office Moves To Ocean View Site

RTD's ticket agency in Long Beach has moved to one of Long Beach's most historic landmarks, the Breaker's Hotel Building at 210 East Ocean Boulevard.

The new site, a convenient central location, will serve all RTD bus lines entering or leaving the Long Beach area.

Transportation Department Notices have been issued for Lines 36, 38, 59, 61,

Continued on page 2

Mini-bus Service To Include Olvera St. & Chinatown June 5

The RTD's Mini-bus service will be soon expanded to serve the Chinatown and Olvera Street areas under a plan approved by the agencies sponsoring Mini-bus operations.

"On or about June 5, the Mini-bus route will be extended North on Hill and Broadway Streets from Temple Street," said Jack R. Gilstrap, RTD general manager.

The present four-minute headway will be extended to five minutes to accommodate the changes. Alternate trips will operate to Chinatown.

On the route to Chinatown, the small, colorful transit vehicles will operate North on Hill Street to Bernard Street, returning via Broadway.

Continued on page 2

28 Employees Donate Blood To SCRTD Blood Bank; More Needed

Many employees and their families needed blood last year and the blood was available.

One family needed 19 pints. It was there. Already this year a family has needed 25 pints. It was there.

But, according to Bill Kendall, who heads the District's blood donation program this year, the bank's almost busted. More blood is needed right now if any kind of emergency requiring quantities of blood occurs.

Twenty-eight employees responded to Kendall's call for blood on March 27. Donors included: Delia Almaraz, Edwin Anderson, Hoy Bilyeu

Continued on page 2



Overpasses For Busway Modified Everything On Schedule

Existing grade separation structure had to be modified for the busway.

Strecker Construction Company is working on the Atlantic Boulevard overpass (above) and Peterson and Rados

Construction Company the San Gabriel Boulevard overpass (below).

Last report on the busway at press time — everything is right on schedule.



Chicken Dinner For Division 10



FINGER LICKIN' GOOD — Division 10 operator Charles J. Porter was one of the first to sample the fried chicken following the District's "Drive With Pride" first place award ceremonies. Division 10 topped the District's 13 operating divisions to win the first place trophy and a "finger lickin' good" chicken dinner. Transit Casualty Safety Supervisor Gary D. MacIntyre helped serve the chicken.

March Operator Of The Month



TRANSIT PROFESSIONAL HONORED — Joseph J. Lafond (right) has been honored as RTD's March "Operator of the Month." The Long Beach resident receives his award plaque from Douglas A. Newcomb, an RTD director and retired superintendent of the Long Beach Unified School District.

Lafond, a veteran of 29 years in Los Angeles area public transit service, was nominated for Rapid Transit District courtesy honors by 36 passengers who have observed the way Lafond provides a "little extra" in the way of courtesy and public service. The commuters praising the operator took particular note of the way Lafond assists senior citizens encountering difficulty in board and alighting from the bus.

Agency Moves

Continued from page 1
66 and 124 showing route changes and bus stops necessary to service the new station.

The telephone number remains the same — 437-3551. The agency was previously in the Continental Trailways depot.

Mini-bus

Continued from page 1
Five minute extension service to Olvera Street follows a route along Los Angeles Street, via Arcadia, Main, Macy and Alameda to Los Angeles Street at the Plaza, where a Mini-buses stop will be posted for alighting and boarding.

Sponsors of the program include the City and County of Los Angeles, the Community Redevelopment Agency and RTD.

Blood

- Continued from page 1
- Veronica Byrd
 - Roger Carter
 - Pat Coen
 - Joe Cooper
 - Jeanne Day
 - Ralph Dela Cruz
 - Gary Evans
 - Curtis Hart Jr.
 - Sylvia Jackson
 - Jerry Long
 - Mel Marquardt
 - Vincent McDermott
 - Sam Olivito
 - Bill Packard
 - Raquel Reyes
 - Edward Sheperd
 - Jeannette Sprowls
 - Marvin Stewart
 - Kathy Sutherland
 - Harold Sweeney
 - Betty Turner
 - Manuel Valenzuela
 - Frank Varela
 - Susanna Whitney
 - Charles Yarbrough

In a few weeks Kendall will be making another call for donors. "It'll be an opportunity for those who weren't able to donate on March 27," Kendall noted. "The Red Cross has been rather unhappy with us in the past because of our lack of participation — they may just cancel our bank.

"Now is the time," he continued, "to think of your fellow employees and also make a deposit in your own behalf if you or your family might need blood. I'll announce the place and time of the next program in the RTD Flyer and on our bulletin boards throughout the District.

"I realize that giving blood at work might be inconvenient for some," Kendall added. "If so, why not give at a local Red Cross Blood Bank Center near your home. When donating though, be it here or at home, tell the Red Cross representative that you are a member of a participating group — the SCRDT Blood Bank, and the blood will be properly credited to the District's Blood Bank."

Give Blood

PRINT SHOP



Over 11 million pieces of printed material are run off each year in the District's print shop.

The print shop was started in 1956 when the Schedule Division of the Metropolitan Coach Lines was given notice by Southern Pacific that they would no longer print MCL timetables. Al Latvala, who worked for SP at that time, transferred to MCL and set up their shop.

Latvala heads the District's

print shop today as supervisor of printing and has a six-man crew — four printers and two shop clerks.

Today the shop is located in the basement of RTD's downtown headquarters. In 1956 it was in the Pacific Electric Building at 610 S. Main Street, moving from that location in 1961, three years after the Schedule Division left the PE building and moved to 1060 S. Broadway.

(Shop Clerk Jonah Leibowitz was on vacation when photos were taken.)

What's Happening At The California Museum Of Science And Industry

SECOND WORLD EXHIBIT OF PHOTOS: "ESSAY ON WOMEN" — Women, all shapes, sizes and hair dyes, rich and poor, plain and beautiful, young and old are celebrated in this international photo-essay which focuses on the art of photography. On display to May 3.

LULU — Sponsored by Los Angeles Advertising Women, LULU presents the best work being done by women in their field and results from a nationwide competition. Creative talents of women in the copywriting, advertising, television, motion pictures, filmstrips and slides, campaigns and radio areas are put to the "Lulu" test. On display April 20 to June 11.

22nd ANNUAL COUNTY SCIENCE FAIR — Scientists of tomorrow, junior and senior high schoolers throughout L.A. County, exhibit their unique and visual science projects in this exhibit sponsored by Southern California Industry-Educational Council. On display May 11 to May 21.

13th ANNUAL STATE SCIENCE FAIR — Seventh through twelfth graders show off science experiments, judged as best throughout California, in health, physiology, biology and electronics. The top ten winners in the L.A. County Science Fair are included in this show sponsored by Southern California Industry-Education Council. On display May 27 to June 4.

15th ANNUAL BONSAI EXHIBIT — Specimens from the Japanese Imperial Collection are included for the first time when, for the 15th consecutive year, California Bonsai Society presents this artistic and beautiful form of horticulture. Bonsai (trees in miniature) are grown and cared for in the ancient Japanese tradition and are part of an Oriental art form that is centuries old. Demonstrations in bonsai art are given daily at 2 p.m. throughout the duration of the exhibit. On display May 24 to June 4.

DECLARATION OF INDEPENDENCE EXHIBIT — One of the original versions of the Declaration of Independence is the focal point of this patriotic exhibit. On display June 1 to July 15.

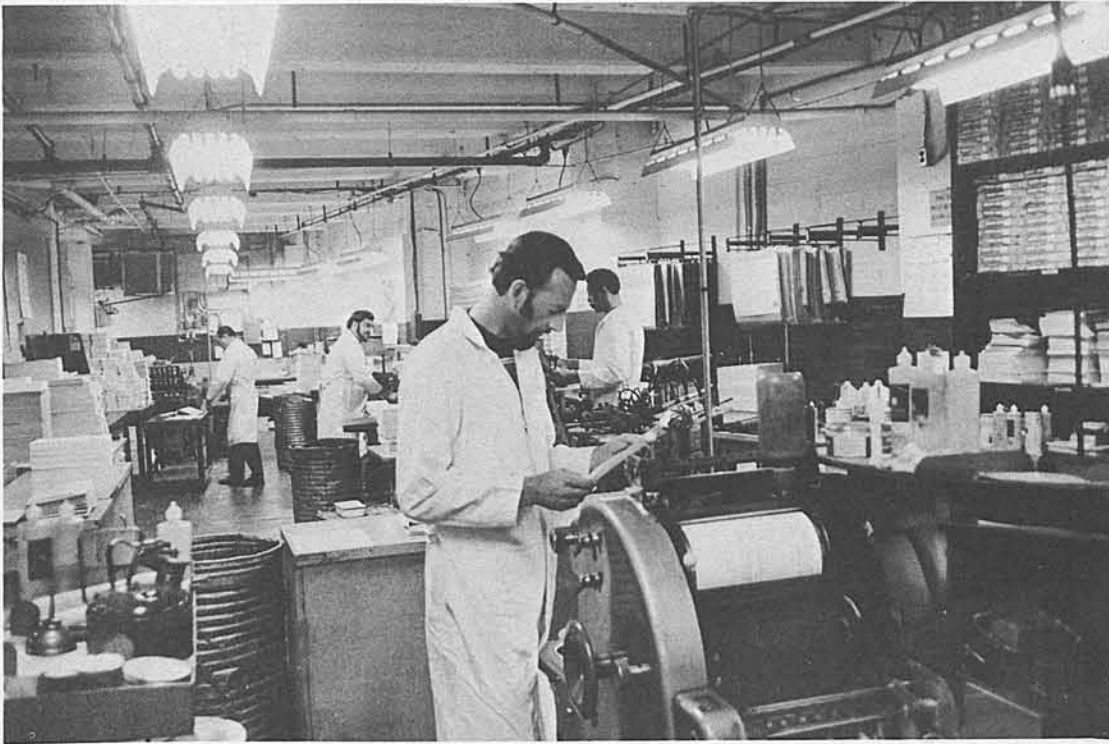
Scribes Needed For RTD Flyer

Many things are happening every day on transit property that would be of interest to RTD Flyer readers.

Some are humorous and unusual and fellow employees would like to know and see them in their newspaper. An employee might have solved a problem that may still be bothering others — or found an easy way of doing something, he can share his findings through the RTD Flyer.

Those interested in writing for the RTD Flyer should contact the District's Public Information Office in Room 500 and ask for Bill Reason. He can also be reached by telephone on extension 431.

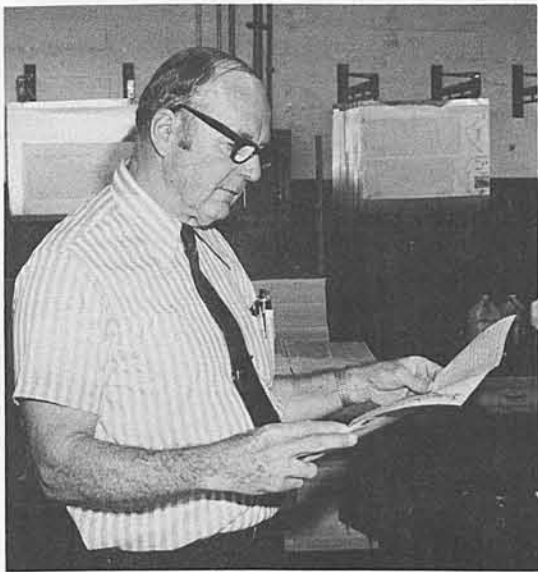
WATCH YOUR RTD FLYER FOR STEAM BUS STORY



Overall view of the District's basement print shop at 1060 S. Broadway.



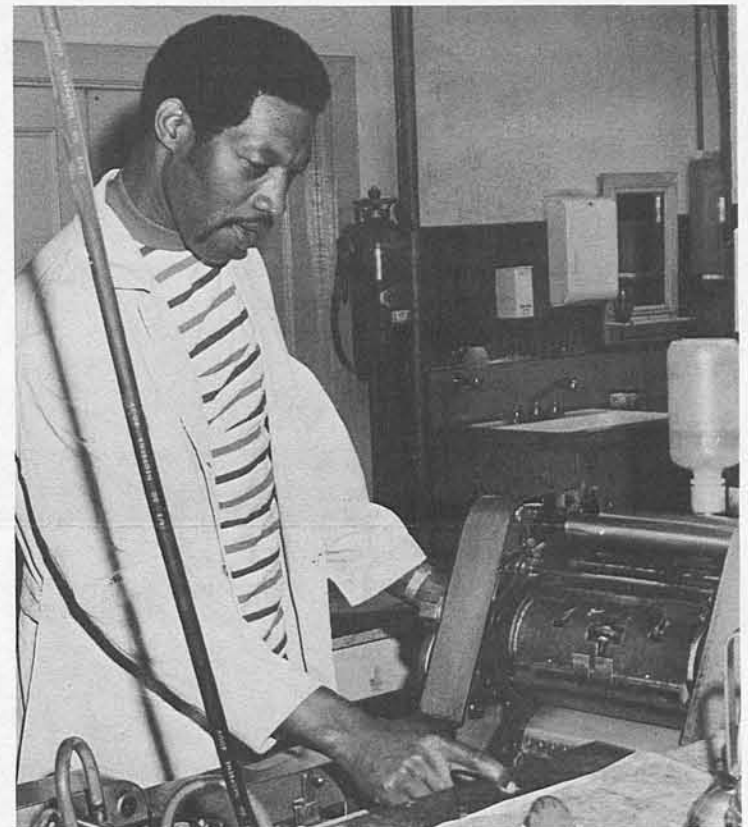
Leroy Hethcoat, shop clerk, folds timetables.



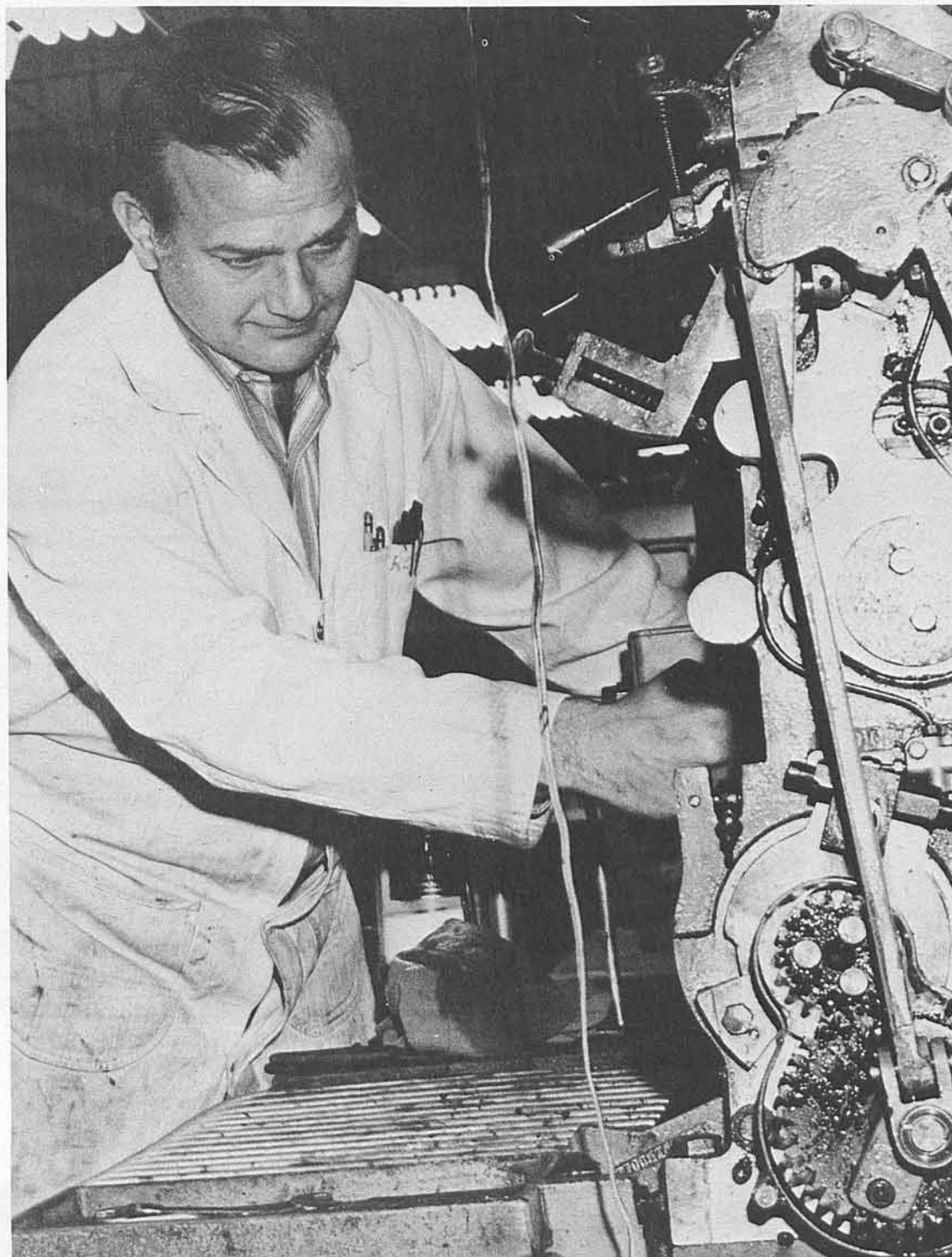
Al Latvala, supervisor of printing, checks over a run of timetables.



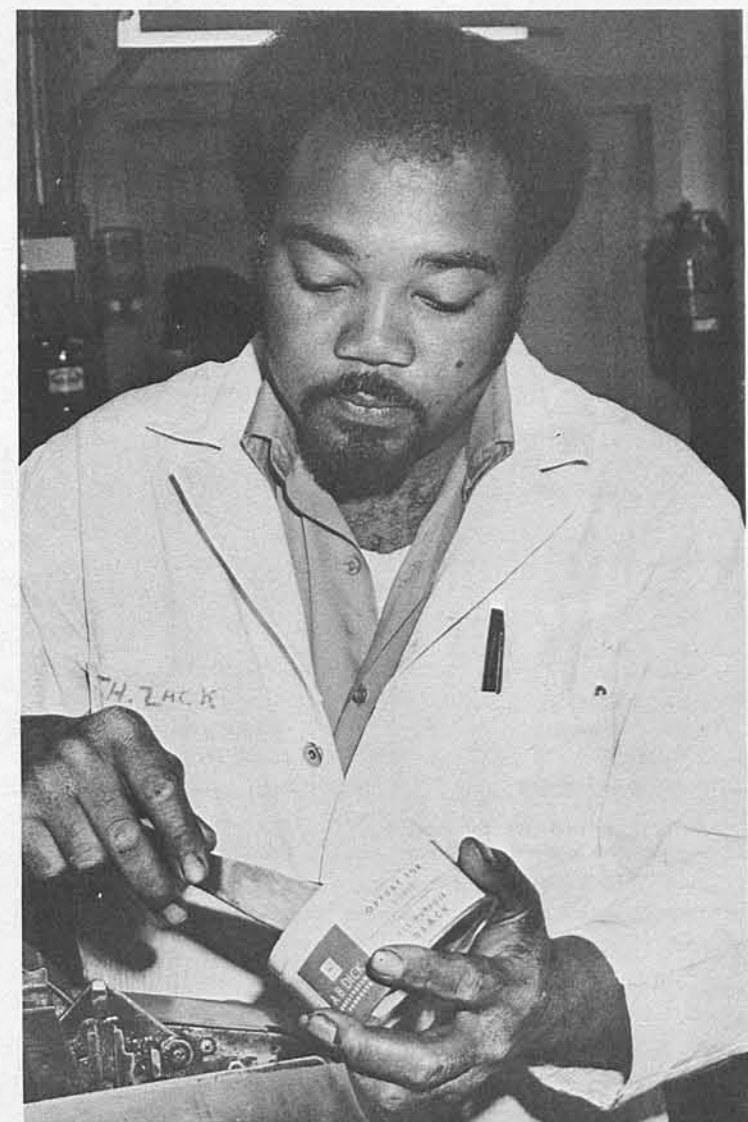
Chuck Fulkmen, multilith operator, runs the 350 AB Dick Offset Press.



Bill Ryan, multilith operator runs a Chief 15 Offset Press.



Mickey Podrasky, assistant supervisor runs the Chief 1722 Offset Press.



Jonah Zackery, printer, inks up one of the presses.

PROMOTIONS AND REASSIGNMENTS

In recognition of their achievement and capabilities the following employees were recently reassigned.

- CHARLES H. BEATTY**
Schedule Maker II to
Schedule Analyst II
- JOSEPHINE DAHLSTROM**
Secretary II to
Secretary III
- DONALD R. DURFEE**
Shipping Clerk to
Utility "A"
- ARTHUR D. FLEMING**
Operator to Architectural
Draftsman
- JIMMIE J. JIMINEZ**
Junior Stock Clerk to
Shipping Clerk
- DOROTHY M. PAIRIS**
Information Clerk to
Information Clerk-Temporary
Supervisor
- MANUEL RANKIN, JR.**
Relief Janitor to
Utility "A"
- ARTHUR L. RODRIGUEZ**
Janitor to Utility "A"
- CARL W. SEEHOFFER**
Utility "A" to Mechanic "C"
- GEORGE R. SYLVA**
Operator to Operator-Extra
Schedule Checker
- HOMER TURNER**
Janitor-Mail Carrier to
Mail Carrier
- NORMA L. VESTER**
Schedule Typist to Schedule
Clerk
- JAMES A. WALKER**
Mechanic "B" to Mechanic "A"

Discount Tickets

Discount tickets are currently available in the District's Industrial Relations Office at 1060 S. Broadway on a first come first basis.

Information on the tickets can be obtained by calling 749-6977, ext. 269 or 288.

- Regularly available are:
- KNOTTS BERRY FARM**
Buena Park
- DISNEYLAND 1972**
Anaheim
- MARINELAND**
Palos Verdes Estates
- MOVIELAND WAX MUSEUM**
Buena Park
- PALACE OF LIVING ART**
Buena Park
- MAGIC MOUNTAIN**
Valencia

RTD Directors

- DR. NORMAN TOPPING,**
President
- THOMAS G. NEUSOM,**
Vice President
- Charles E. Compton
- A. J. Eyraud, Jr.
- Leonard S. Gleckman
- David K. Hayward
- Herbert H. Krauch
- Michael E. Macke
- Don. C. McMillan
- Douglas A. Newcomb
- Jay B. Price
- Virginia Rees, Secretary

Published by and for the employees of the Southern California Transit District.

- JACK R. GILSTRAP**
General Manager
- GEORGE F. GOEHLER**
Manager of Operations
- ROBERT R. SCHOLL**
Director of Public Information
- WILLIAM A. REASON**
Editor

VITAL STATISTICS

In memorium to employees who have devoted much of their lifetime in a profession designed to move people.

- IGNAZIO GASPARRO**
Flagman
2-1-72/RETIRED: 3-1-55
Years of Service: 35
- LUCIAN GRANT**
Operator
3-6-72/RETIRED: 11-1-71
Years of Service: 15
- WILLIAM H. HARRIS**
Operator
3-22-72/RETIRED: 5-11-66
Years of Service: 29
- DONALD T. HARTER**
Operator
3-26-72/RETIRED: 10-15-71
Years of Service: 26
- JOHN A. HAWKS**
Mechanic Leadman
2-23-72/RETIRED: 6-11-59
Years of Service: 39
- COLLIS HOLLADAY**
Treasurer
1-7-72/RETIRED: 3-16-47
Years of Service: 14
- DOROTHY L. KALDE**
Service Inspector
1-28-72/RETIRED: 3-1-63
Years of Service: 20
- DAMON KING**
Utility "A"
3-28-72/RETIRED: 6-1-71
Years of Service: 24
- CHESTER W. LEBCHER**
Operator
2-21-72/RETIRED: 12-5-58
Years of Service: 41
- JAMES C. POE**
Operator
3-1-72/RETIRED: 10-1-71
Years of Service: 18
- EDWARD H. SCHLICHTMAN**
Division Clerk
3-7-72/RETIRED: 6-1-62
Years of Service: 19
- IVAN L. STEWART**
Operator
1-30-72/RETIRED: 6-1-69
Years of Service: 39

RETIREMENTS

Climaxing many years of work in the field of public transportation, the following District employees recently retired:

- KENNETH C. CAMPBELL**
Division Manager
Emp. 8-14-41/RETIRED: 4-1-72
Years of Service: 30
- DOROTHY E. DELP**
Secretary III
Emp. 6-25-47/RETIRED: 3-26-72
Years of Service: 24
- EDWARD S. FITZGERALD**
Operator
Emp. 7-6-55/RETIRED: 4-5-72
Years of Service: 28
- CLARENCE A. SCHULZ**
Division Manager
Emp. 3-16-37/RETIRED: 3-23-72
Years of Service: 35

Ray Singley Joins Staff As Labor Relation Rep

Ramon "Ray" Singley has joined the District's Industrial Relations Department as Labor Relations Representative.

Singley has over four years' labor relations experience, including negotiations and grievance handling with Chrysler Corporation, Douglas Aircraft, and Metro-Goldwyn-Mayer.

His responsibilities will be to serve as a member of the negotiation teams, assist in the handling of first, second and third step grievances and coordinate the uniform interpretation of union contract provisions.

150 Years Of Transit Story



GOLDEN ANNIVERSARIES — Three South Park employees (left to right) Tommy Rocha, Raymond Shollin and Geronimo Gutierrez will have 50 years' service in public transportation by September 16. During break times they sometimes gather at one of the benches outside to talk about the "old days" and how things were in transportation back in the 20's.

A century and a half of transit service has been compiled by three men at RTD's South Park Shops.

Geronimo Gutierrez, age 67, hit his golden anniversary in March. Raymond Shollin, age 70, will reach his in July and Tommy Rocha, age 65, in September.

All three men started with the Los Angeles Railway in 1922 and during their transit career worked many jobs. Gutierrez and Rocha had

similar careers. Both are mechanics today and both first started as construction workers. Gutierrez is in the South Park body shop and Rocha is leadman in the brake shop. Shollin, presently a pattern maker, has spent his career working with wood.

When asked when they plan to retire, each said "someday." Each man looks younger than his years and according to Gus Gundersen at South Park, "If they were to retire now, they'd be awfully hard to replace."

Managers of Division 6, 9-13 Retire

Clarence (Jimmie) Schulz, who had dedicated 35 years to public transportation, retired as manager of Division 6 on March 23. Kenneth Campbell, division manager of 9-13, followed eight days later, retiring on April 1.

Schulz joined the District in 1937 as a motorman and steadily moved up the promotional ladder to become a division manager in 1956 of what used to be the old LATL Vineyard Division at Pico Boulevard east of La Brea Boulevard. He managed four other divisions before his retirement in March.

Campbell joined the District in 1967, transferring from the Pasadena City Lines when

the District took over that transit system in that year.

"Men of this calibre are hard to come by," noted Jack R. Gilstrap, RTD general manager. "They will be missed."

ACME Club Helps Fight Sickle Cell Research

District employees have been lauded in a letter from Lonzie L. Jones, President of the Sickle Cell Disease Research Foundation.

In the letter Jones says, "May we take this opportunity to thank — the employees of the Southern California Rapid Transit District for your contribution. (Made through ACME.) We are more than pleased that you have chosen the Foundation

to be the recipient of your gratuities.

"Contributions like yours enable the Foundation to continue to make grants for medical research and continue its community service of education, mass screening and counseling and sponsorship of a summer camp program for sickle cell victims."

Safe Driving Award Pins Presented March 27-31

National Safety Council Safe Driver Awards were presented to 1225 operators at a series of presentations at all divisions during the period March 27th through 31st.

Awards ranged from one year to 27 years, the maximum number of years possible since the beginning of the program in 1945.

**Southern California Rapid Transit District
1060 South Broadway, Los Angeles 90015**

U. S. POSTAGE
paid
BULK RATE
Los Angeles, Calif.
Permit No. 28201

4 7082 4200
BARNES F C
5126 NOBLE AVE
SHERMAN OAKS, CALIF 91403