

SOUTHERN CALIFORNIA RAPID TRANSIT DISTRICT

\$44.5 MILLION CLAIM FILED BY RTD



EXTENSION CEREMONIES FOR NEWHALL-SAUGUS-VALENCIA LINES — New bus service in the growing Newhall-Saugus-Valencia area came as a result of cooperation between RTD, legislators and members of the local community. Celebrating the expansion of service are (from left) Jack R. Gilstrap, RTD general manager; Veronica Gray,

representing Congressman Barry M. Goldwater, Jr.; Daniel Hon, of the Newhall-Saugus-Valencia Chamber of Commerce; Assemblyman Newton R. Russell; Senator John V. Tunney; Caroline Phillips, also of Congressman Goldwater's staff; and Supervisor Warren M. Dorn.

RTD Bus Service Extended To Newhall-Saugus-Valencia Area

Long awaited RTD Valencia Valley bus service was inaugurated Saturday (July 8) at the Valley's new Civic Center County Courthouse.

Representatives of government at the federal, state and local levels joined community leaders and RTD officials for the Valencia ceremonies.

U.S. Senator John Tunney, Assemblyman Newton Russell and County Supervisor Warren M. Dorn headed the list of dignitaries participating in the program heralding the commencement of service on two new RTD bus lines last Monday (July 10).

The guests were welcomed by the Rapid Transit District's General Manager Jack R. Gilstrap and Charles E. Compton, Northwest Corridor representative on the RTD board of Directors.

Also present were members of local Chambers of Commerce, service organizations, and local news media, all of whom worked very hard for the extension of service to the rapidly growing area.

Following the dedication speeches, dignitaries and guests were invited to an air-conditioned bus tour of the new route.

The two new bus lines, designated 182 and 183, will be in operation on a six-month experimental basis.

Line 182 is designed to serve the major commercial and business sections of surrounding areas while Line 183 services College of the Canyons and California Institute of the Arts (see map page 2).

Both lines service the area's modern civic center with its complete county facilities.

Service on Line 182 is operating on weekdays from approximately 8:00 a.m. to 5:50 p.m., and Line 183 from approximately 7:15 a.m. to 4:40 p.m.

Service is scheduled at 80-minute intervals, with 40-minute service in the area of dual operation along San Fernando Road. Approximately 40 bus stops are being installed.

Special Courses Granted Funding By RTD Board

RTD's Board of Directors has authorized funding for the continuance of the management training program.

The approval of re-funding the project, according to RTD General Manager Jack R. Gilstrap, came in view of the overall employee enthusiasm and successful evaluation of the program.

In the same decision, the board voted to implement a comprehensive in-house training program to focus on the up-grading of on-the-job skills not included in the existing programs.

The areas of training of this program will be determined by the respective department heads in view of the individual employee's needs of special techniques.

Designed to improve current operational efficiency, the training involved in these small seminar type courses will include Labor Relations; Planning for Top and Middle Management; Supervision for Division Clerks, Supervisors

ACME Club Assisting In Cure of MS

RTD's ACME Club members received recognition by the National Multiple Sclerosis Society for their assistance in helping find a cure for Multiple Sclerosis.

Carl T. Crabb, executive director for the Society noted in a letter to the ACME Club members, "Twenty-five years ago the general public was only vaguely aware of multiple sclerosis and little, if any, significant research was being done. Now, we are on the threshold of solving the problem because people like yourselves have become aware of the gravity of this disease and you want a cure found."

"If, indeed, we are on the threshold of finding the answer," he continued, "it is because of continuing support from people such as you."

For Information On Joining ACME Club, See Your Supervisor.

District Files For Share Of Sales Tax Receipts

A claim for local transportation funds in the amount of \$44,565,000 for the fiscal year ending June 30, 1973, is being filed with the Southern California Association of Governments by the Southern California Rapid Transit District.

The money will come from sales tax receipts as a result of the extension of the general sales tax to gasoline sales, which began July 1.

The claim is \$6,565,000 greater than the projected claim incorporated into the District's recently adopted fiscal year 1973 budget.

"It now appears that more tax will be collected than was previously estimated, due to improved business conditions," said Thomas G. Neusom, District vice president.

A major effect of the increased claim, Neusom said, will be the set aside of \$12 million for rapid transit development in 1973 rather than the \$7½ million previously budgeted.

The District's technical grant application to aid in the selection of a corridor, or corridors, for initial construction was recently approved by the U.S. Department of Transportation. The study is required before DOT will consider the award of a grant for engineering and construction of a system.

Some \$8,405,000 of the claim will be used by the District as local matching funds for a bus system capital improvement program, with the Urban Mass Transportation Administration being asked to supply double that amount.

The planned program includes the purchase of 219 new 51-passenger air-conditioned buses to replace worn-out coaches that have been in service for more than 15 years.

"Throughout the area we serve," explained Jack R. Gilstrap, RTD general manager, "customers have requested that we provide air-conditioned buses. Some 441 of our 1,597 buses are now so equipped. We are hopeful of eventually having a complete fleet of such vehicles and this purchase is a step in that direction."

Another capital expenditure would add 20 Mini-buses to the 19 now used by the District in providing a special low-fare circulation system in



Residents of the Friendly Valley Country Club, a senior citizens housing development, check RTD timetables for the new bus service that will start July 10 in their area. Looking over the timetables are Jerry Beck, club secretary; Bernice Hannick, acting activity director; and Arthur Christian, president of the clubs recreation association.



The realization of a dream for his community comes to life as Bill Born (left), vice president of Greer Enterprises in Newhall check over a poster heralding new service for the Newhall-Saugus-Valencia area. With Bond are Jim Wilcox (center), Treasurer, Canyon Country Chamber of Commerce and Don Hon (right), chairman of the transportation committee of the Canyon Country and Newhall-Saugus Chambers of Commerce.

District Files Claim

Continued from Page 1

downtown Los Angeles. Purchase of these buses, Gilstrap said, hinges on the extension of the demonstration Mini-bus program, which is receiving financial support from the City and County of Los Angeles and the Community Redevelopment Agency, and which is due to end in December. The new buses would not necessarily all be used in the downtown service, Gilstrap advised, but might be used in similar demonstrations in other areas.

Other projects under the capital improvement program include the reconstruction or replacement of a number of maintenance and service buildings at various District operating divisions, some of which were severely damaged in the 1971 earthquake.

Debt service will require \$3,090,000 of the claim.

The balance — \$21,070,000 — will be used to make up the deficit in the cost of operating the existing bus service in fiscal year 1973, Gilstrap said.

“Our projected revenues for the period are \$51,795,000, and the cost of fuel, tires, wage, and fringe benefits for our operators and mechanics, and similar items is expected to be \$72,865,000.

“Normally, the solution would be either to increase fares or reduce service or both,” he added. “Fortunately, the use of the sales tax funds made available as the result of passage last year of Senate Bill 325, along with the assistance we anticipate from the Federal government in the form of matching funds for capital expenditures, will

allow the District to operate through the year without resorting to either of these negative moves.

“It is important to remember,” he said, “that District fares have not increased since 1967, while at the same time, the cost of doing business has risen proportionate to the general inflation of the economy. Particularly significant are the increased costs of wages and salaries which account for more than 75 percent of our operating costs, as they do in all transit organizations.

“Additionally, of course, we recently reduced the basic fare for senior citizens from 20 cents to 10 cents; we provide five cent fares to the blind, and we carry students at reduced rates.”

“The type of assistance we will receive from the sales tax funds, therefore, is not just something nice to have but a necessity if we are to continue to provide service to our customers,” Gilstrap continued.

“Enabling the District to avoid fare increases and schedule cuts, with their resultant adverse effect on the 193 million passengers we carry annually, is probably the most important benefit of the tax funds.”

“The District provides approximately 80 percent of all public transportation in Los Angeles, Orange, Riverside, and San Bernardino Counties,” Gilstrap said. “Thousands of non-drivers — the aged, the young, the handicapped, the poor — are almost totally dependent on the District for transportation and it is essential that we maintain at least our present

level of service — and our present rates — as long as possible in order that we might meet their very real needs.”

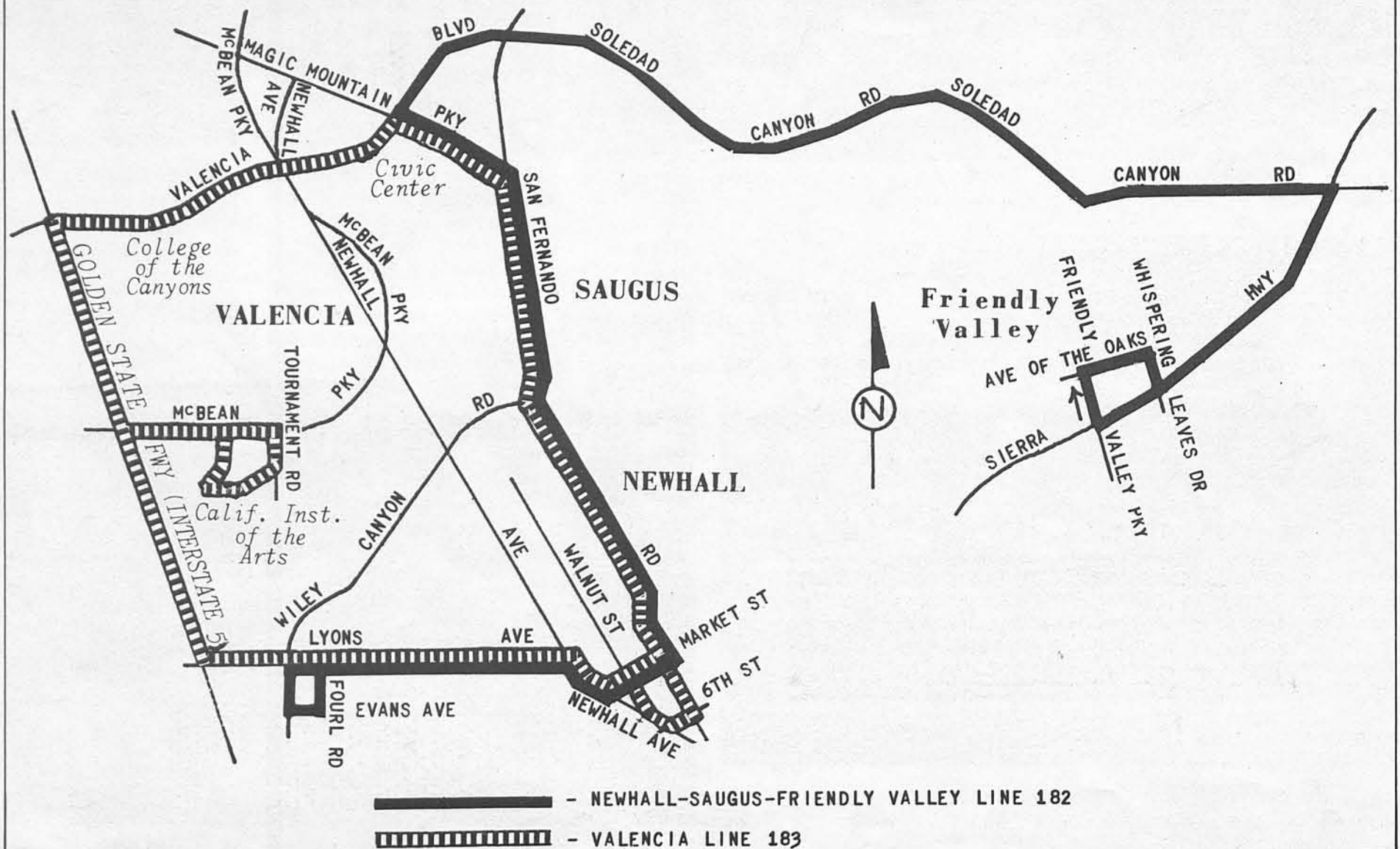
“In addition,” he said, “there are many areas without service or where service is limited. We hope that through the use of SB 325 funds we can establish new routes and new schedules, on an experimental basis, in some of these areas.”

“Senate Bill 325 provides that 75 percent of the claimed funds will be used for bus system and rapid transit capital expenditures,” Gilstrap explained. “However, this requirement is reduced by the amount of capital grant money received by the District from the Federal government. As a result of this provision in the law, the District is able to present this claim which calls for 47 percent of the funds to be used to support bus operations.”

Of the \$44,565,000 in the claim, \$43,916,000 is being requested from funds accumulated in Los Angeles County; \$312,000 is being asked from Orange County, \$182,000 from San Bernardino County, and \$155,000 from Riverside County funds. In addition to the increase in rapid transit set-aside, items that increase the claim over the previously budgeted \$38 million include an increase of \$329,000 in the District’s liability insurance requirements, \$616,000 for increased Social Security and unemployment compensation costs, \$120,000 for the purchase of equipment for Eastern Cities Lines, and the exclusion from revenue of \$1 million in funds received by

Continued on Page 4

Map Of New Route Service In Newhall-Saugus-Valencia





Lloyd H. Brugmann, a transportation veteran since 1935 manages Division 4 & 5. He started in public transportation as an operator.



Division 4 & 5, known locally as the 54th Arlington Division, is situated in Southwest Los Angeles strategically located to serve the residents of that area.



Assistant Division 5 Manager Thomas Walker (right) works with Division Clerk James Cenderelli on daily operations.

DIVISION 4 & 5

Located in Southwest Los Angeles at 2300 W. 54th Street Division 4 & 5 serves community residents from Redondo Beach, Watts, downtown Los Angeles and Hollywood.

Floyd Brugmann heads the division with 36 years' experience in public transportation. Ed Fox, equipment superintendent I, is in charge of the maintenance section of Division 4 & 5.

As Division Manager, Brugmann is in charge of 427 operators and office personnel and the operating procedure of 250 buses. Ed Fox is in charge of 76 maintenance employees who care for and repair the buses.



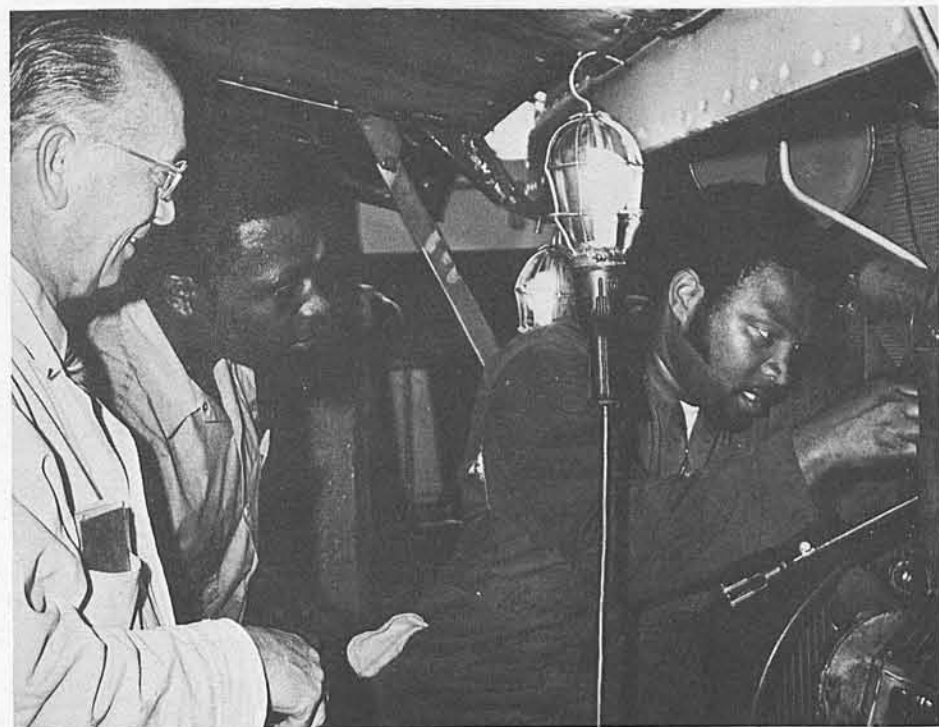
Ben Logan, mechanic "A" cleans carbon from the main air line of air compressor on bus behind him.



Division Stenographer Wanda Schmidt types operator seniority lists for the August Division Shake-up.



Laurence Johnson, division clerk, gives operator necessary material for operations, such as dated transfers, etc.



Ed Fox, (left) equipment superintendent I, watches Johnny Howard, (center) mechanic "A" and James Gatewood, (right) mechanic "B," put in new head seal on a VG GMC engine.



Fletcher Earles, mechanic "B," rewires power box on Bus 5463.

Training

Continued from Page 1

and Instructors; Public Speaking; Telephone Training Usage; Technical Writing; Data Processing; Secretarial Techniques Package; and Interviewing and Evaluating Techniques.

The programs already in full operation are the Transportation Administration Certificate Program; Special Courses Program; and Tuition Reimbursement Program.

The Transportation Administration Certificate Program is a special two-year course of study aimed in providing outstanding employees with an opportunity to prepare for managerial positions.

Enrollment for another group of qualified employees begins this summer for initiation in the fall. The current group has completed six of the designated eight courses needed to receive the certificate.

The Special Courses Program offers specific courses for both non-contract and contract employees in order to improve their work capabilities in areas of immediate demand.

RTD Tuition Reimbursement Program is designed for technical, supervisory and managerial employees who desire specialized classes to increase their ability to carry out their current duties and responsibilities.

Bulletins concerning enrollment information for the continuing training programs will be posted in the near future.

District Files Claim

Continued from Page 2

the District as a result of the half-cent special sales tax applied for six months in 1970 to support public transportation.

The District will not receive any actual revenue from the claim until October or later, Gilstrap said.

Give Blood

RTD Directors

- DR. NORMAN TOPPING,
President
- THOMAS G. NEUSOM,
Vice President
- Charles E. Compton
- A. J. Eyraud, Jr.
- Leonard S. Gleckman
- David K. Hayward
- Herbert H. Krauch
- Michael E. Macke
- Don. C. McMillan
- Douglas A. Newcomb
- Jay B. Price
- Virginia Rees, Secretary

Published by and for the employees of the Southern California Transit District.

- JACK R. GILSTRAP
General Manager
- GEORGE F. GOEHLER
Manager of Operations
- ROBERT R. SCHOLL
Director of Public Information
- WILLIAM A. REASON
Editor

PROMOTIONS AND REASSIGNMENTS

In recognition of their achievement and capabilities the following employees were recently reassigned.

HARRY P. MAGUIRE
Operator-Extra Instructor to Instructor

ROSALIE F. McDUFFIE
Ticket Clerk to Ticket Office & Reports Clerk

ALBERT J. MURRELLO
Temporary Vacation Relief Ticket Clerk to Ticket Clerk

CHESTER W. RAUCH
Mechanic "B" to Mechanic "A"

JOSEPH H. REEVES
Supervisor-Extra Dispatcher to Dispatcher

MELBA J. SARRIS
Information Clerk to Vacation Relief Ticket Clerk

MARION L. SCHNEIDER
General Clerk II to Pension and Insurance Clerk

RAYMOND V. THOMAS
Operator-Extra Special Agent to Assistant Special Agent

FRANCES G. WALKER
Typist Clerk to General Clerk II

B. D. WHITTINGTON
Operator-Extra Division Clerk to Relief Division Clerk

EARL WILLIAMS
Assistant Special Agent to Special Agent

FRANCES BATEMAN
Order Typist to Typist-Clerk

EDDIE BROWN, JR.
Mechanic "C" to Mechanic "B"

GEORGE H. BROWN
Mechanic "B" to Mechanic "A"

DAVID M. CHAVEZ
Utility "A" to Laborer "A"

RICCI G. DAVIS
Junior Stock Clerk to Stock Clerk

EDDIE O. FENTROY
Mechanic "C" to Mechanic "B"

JACK H. HALL
Operator-Extra Division Clerk to Division Clerk

STEVE HEARN
Mechanic "C" to Mechanic "B"

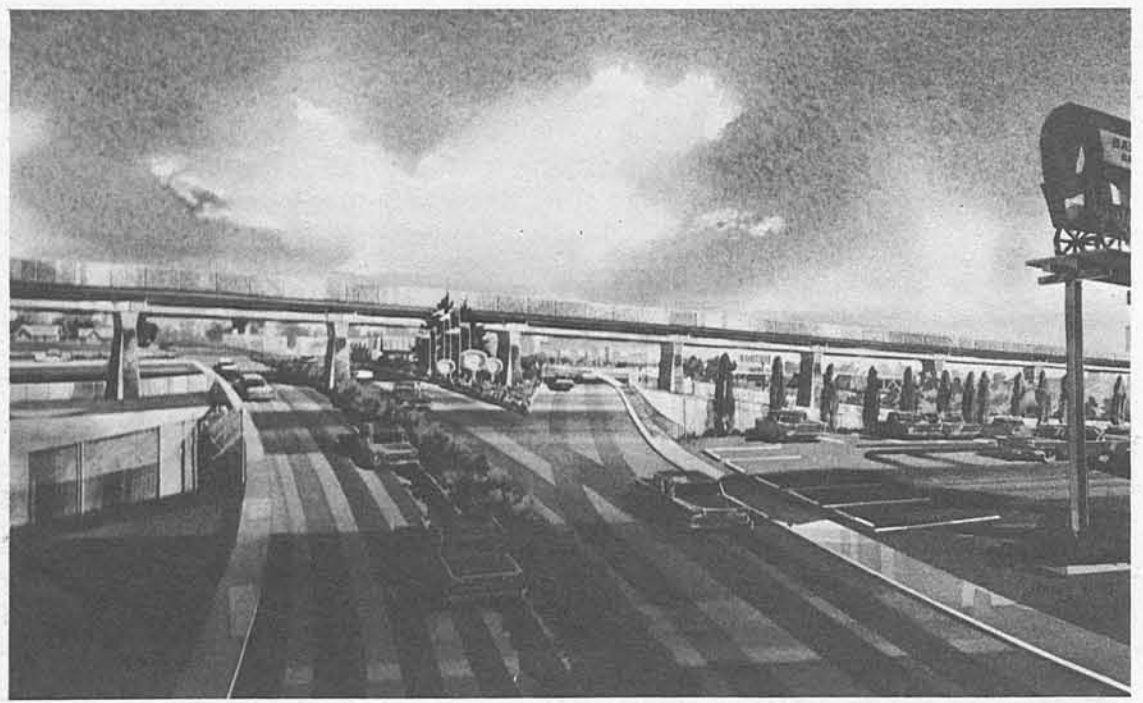
EMORY J. HESS
Ticket Clerk to General & Ticket Clerk

Discount Tickets

Discount tickets are currently available in the District's Personnel Office at 1060 S. Broadway on a first come first basis.

Information on the tickets can be obtained by calling 749-6977, ext. 269 or 288.

- Regularly available are:
- KNOTTS BERRY FARM
Buena Park
 - DISNEYLAND 1972
Anaheim
 - MARINELAND
Palos Verdes Estates
 - MOVIELAND WAX MUSEUM
 - PALACE OF LIVING ART
Buena Park
 - MAGIC MOUNTAIN
Valencia
 - LION COUNTRY SAFARI
Irvine Ranch
 - BUSCH GARDENS
Van Nuys
 - UNIVERSAL STUDIOS
Hollywood



RIO HONDO RAILROAD CONNECTION — Construction of RTD's new Busway Station at El Monte has necessitated the moving of the existing Southern Pacific railroad tracks in that area. The new track alignment will be elevated and carry trains to a connecting line about a mile from the intersection of Valley and Santa Anita Boulevards. The new alignment will eliminate several railroad crossings within El Monte. Because of this the State Grade Crossing Fund is partially funding the project. Peter Kiewit Sons' Co. has been awarded the contract to build the new railroad bridge and construction began the first week in July.

RETIREMENTS

Climaxing many years of work in the field of public transportation, the following District employees recently retired:

RICHARD G. CORL
Operator
Emp. 9-16-46/RETIRED: 6-3-72
Years of Service: 25

RILEY C. RUTHERFORD
Operator
Emp. 2-10-44/RETIRED: 6-28-72
Years of Service: 28

RAYMOND C. VAUBEL
Mechanic "A"
Emp. 5-19-43/RETIRED: 7-1-72
Years of Service: 29

DAVID E. WALSH
Operator
Emp. 8-10-45/RETIRED: 6-24-72
Years of Service: 26

SAM WILLIAMS
Operator
Emp. 11-26-56/RETIRED: 7-7-72
Years of Service: 15

VITAL STATISTICS

In memorium to employees who have devoted much of their lifetime in a profession designed to move people.

THOMAS W. HOUSER
Operator
6-16-72/RETIRED: 2-9-62
Years of Service: 19

HOMER M. PORCHER
Mechanic "A"
6-24-72
Years of Service: 28

ROBERT C. RUPE
Operator
7-2-72/RETIRED: 9-19-71
Years of Service: 29

LEE E. SIRES
Instructor
6-27-72/RETIRED: 6-1-71
Years of Service: 36



SERVICE TO MARINELAND—Lovely Minnie, who works as a sea lion at world-famous Marineland, prepares to board bus for crosstown trip. Eyeing his sleek customer is driver Leo Birdwell of Paramount, a 12-year veteran. Minnie knows the easy way to travel, use an RTD extra car.

Southern California Rapid Transit District
1060 South Broadway, Los Angeles 90015

U. S. POSTAGE
paid
BULK RATE
Los Angeles, Calif.
Permit No. 28201

4 7082 4200
BARNES F C
5126 NOBLE AVE
SHERMAN OAKS, CALIF 91403