



## SOUTHERN CALIFORNIA RAPID TRANSIT DISTRICT

### Mini-bus Promotion Started June 5 In Chinatown and Olvera Street



**CHINATOWN SERVICE**—Thriving Chinatown has been added to the loop of the city's popular, dime-fare Mini-buses. Celebrating the northern extension of service (effective June 12) are Ida Gin (left) and Yolanda Velarde, "Mimi-Maids" of the Southern California Rapid Transit District. They will be distributing information on the new Chinatown and Olvera Street service throughout the downtown area. They are joined (from left) by David Chow, Wallace Lee Coon, and Bill Hong, executives of the Chinatown Chamber of Commerce. The Mini-bus loop will be extended north from Temple Street, with the colorful 20-seat buses operating every other trip north on Hill Street to Bernard Street and returning by way of Broadway.



**SERVING 'OLD MEXICO'**—A tiny part of "Old Mexico"—Olvera Street—will be served by the colorful Mini-buses of the Southern California Rapid Transit District. Yolanda Velarde (left) and Ida Gin, RTD "Mini-Maids," celebrate the extension of the loop (effective June 12) to Olvera Street and Chinatown with Mario Valadez, Olvera Street managing director. The girls will be distributing information on the new service throughout the downtown area. In traveling to Olvera Street, the Mini-buses proceed along Los Angeles Street via Arcadia, Main, Macy and Alameda Streets, terminating at the plaza.

### Mini-bus Caravan Heralds Service To Chinatown and Olvera Street

RTD Mini-buses went "international" Monday (June 12) when service was extended to Olvera Street and the Chinatown area.

To commemorate the occasion two appropriately decorated Mini-buses stopped on the First Street side of City Hall for brief ceremonies that included the music of a mariachi band. The caravan then moved to the Temple Street side of the Hall of Administration and picked up County passengers and proceeded to the Olvera entrance of Olvera Street. After brief welcoming ceremonies the buses reloaded and proceeded to Chinatown.

### RTD Adopts Fiscal Year Calendar July 1

Southern California Rapid Transit District directors have adopted a \$107,165,000 budget for the 1972-73 fiscal year.

The action places the public transit agency on a fiscal year instead of a calendar year basis, conforming to the practice in most governmental agencies.

Effective July 1, the new fiscal year budget approved by the RTD Board compares to a \$93,640,000 budget adopted last December for the current calendar year.

The new budget provides for \$71,920,000 in operating expense, capital expenditures of \$24,655,000, debt service costs of \$3,090,000, and a set aside of \$7,500,000 for rapid transit development. "The new budget reflects some previously unanticipated increases in the cost of our retirement program and in other operating costs," explained RTD's General Manager Jack R. Gilstrap. "At the same time, it includes some items previously scheduled for 1973."

"We have also increased our capital budget for the year, reflecting changes in our five-year capital improvement program which will provide us with more than 200 new buses, as well as accomplishing much-needed repairs and renovation in some of our operating divisions."

Gilstrap noted that the only change in the fare structure under the terms of the new

Continued on Page 4

At the corner of Alpine and Hill the caravan was met by the Lion Dancers, who led the caravan into Chinatown for brief ceremonies there.

Jack R. Gilstrap, RTD's general manager, noted that the expanding routing—at the same 10-cent fare—will link the cultural, recreational and tourist attractions at Olvera Street and Chinatown with the civic center, the Bunker Hill high-rise area and the Central City's retail and commercial complex.

The natural gas Mini-buses operating to Olvera Street followed a route along Los Angeles, Arcadia, Main, Macy and Alameda Streets to the Plaza, returning via Los Angeles Street.

Every other trip will service Chinatown, traveling north on Hill Street to Bernard Street, returning via Broadway.

The present four-minute service will be extended to five minutes to accommodate the expansion in service for the colorful, small buses, which operate from 9 a.m. to 4 p.m.,

Continued on Page 4

### Cystic Fibrosis Research Backed By ACME Members

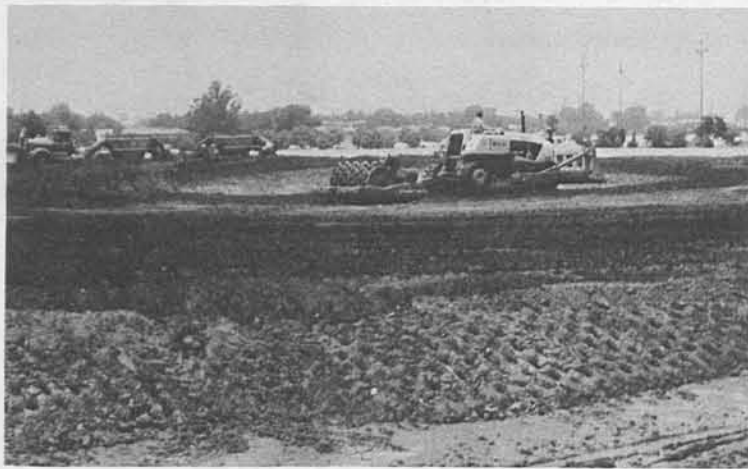
Mrs. Toddy David, president of the National Cystic Fibrosis Research Foundation, Los Angeles Chapter, thanked RTD's ACME Club members for their contributions to the Foundation.

In her letter to the ACME club members she noted, "Your awareness and thoughtfulness provide a most meaningful assist toward the efforts of the Foundation to make breathing easier for more than 5,000,000 children with serious lung-damaging diseases in America today.

"On behalf of our CF children and their families," she continued, "please accept our heartfelt thanks for contributing to our cause."

**SIGN UP FOR  
A  
SAVINGS  
BOND  
NOW**

# On Schedule . . .



Earthwork nears completion at the site of the District's El Monte Busway Station. Unsuitable material has been removed and suitable fill placed and compacted.



Construction of an overpass for Southern Pacific Railroad tracks is underway west of the El Monte Busway Station. Busway buses will travel under the tracks entering and leaving the Station.



Sub-grade work on this portion of the Busway has been completed. Soon a section of Southern Pacific Railroad tracks will be laid between the concrete barriers with busway lanes on the outside of the barriers.

## Budget

Continued from Page 1

budget is the reduction—now in effect—in senior citizen fares from 20 cents to 10 cents. "Our projected revenues are fundamentally the same as we would have projected at the first of the year," he said. "This includes annual passenger or farebox revenues of approximately \$47,900,000, tax revenues of approximately \$39,000,000 including funds still being derived from the special 1970 sales tax levy, federal grants of some \$17,307,000 and subsidies, advertising revenues, interest earnings, and other revenues totaling \$2,958,000."

## Route Change

Commencing June 18, Line 141 route in the vicinity of First Street and Rowan Avenue will be changed as follows: southbound from First Street and Rowan Avenue via east on First Street, south on Gage Avenue, east on Third Street and then assuming the regular route. Return service will be via the present route to Third Street and Gage Avenue then via north on Gage Avenue, west on First Street, north on Rowan Avenue and assuming the present route. Service along Rowan Avenue from First Street to Third Street and along Third Street from Rowan Avenue to Gage Avenue will be discontinued. Line 140 and 142 turnaround loop will be as follows: via present route southbound on Rowan Avenue then via Michigan Avenue, Eastman Avenue, First Street and Rowan Avenue. Layover will be taken in new layover zone on First Street just east of Rowan Avenue. The present turnaround loop via First Street, Eastman Avenue, Third Street and Rowan Avenue will be discontinued.

## 24 German Public Transportation Officials Visit Transit District



The 24 visiting German transit officials met in the District's Boardroom for a briefing from RTD's General Manager Jack R. Gilstrap. The visitors were particularly interested in the District's plans regarding the Busway and Rapid Transit System. They termed the District's plans as "excellent." As part of their tour of the District they traveled by RTD bus along the Busway construction site in the median of the San Bernardino Freeway.

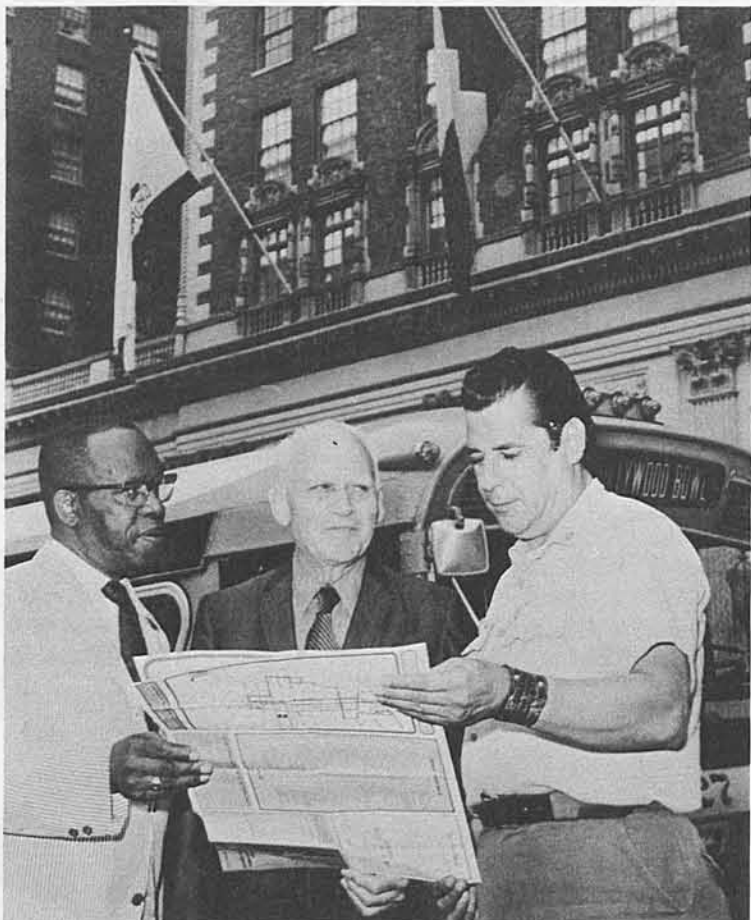


German visitors take a Mini-bus ride over the District's original 6.9 mile Mini-bus route. Henry Beier (standing in aisle) RTD schedule maker and fluent in German, acted as interpreter for the District.

## RTD Operator Receives Student Award At L.A. City College



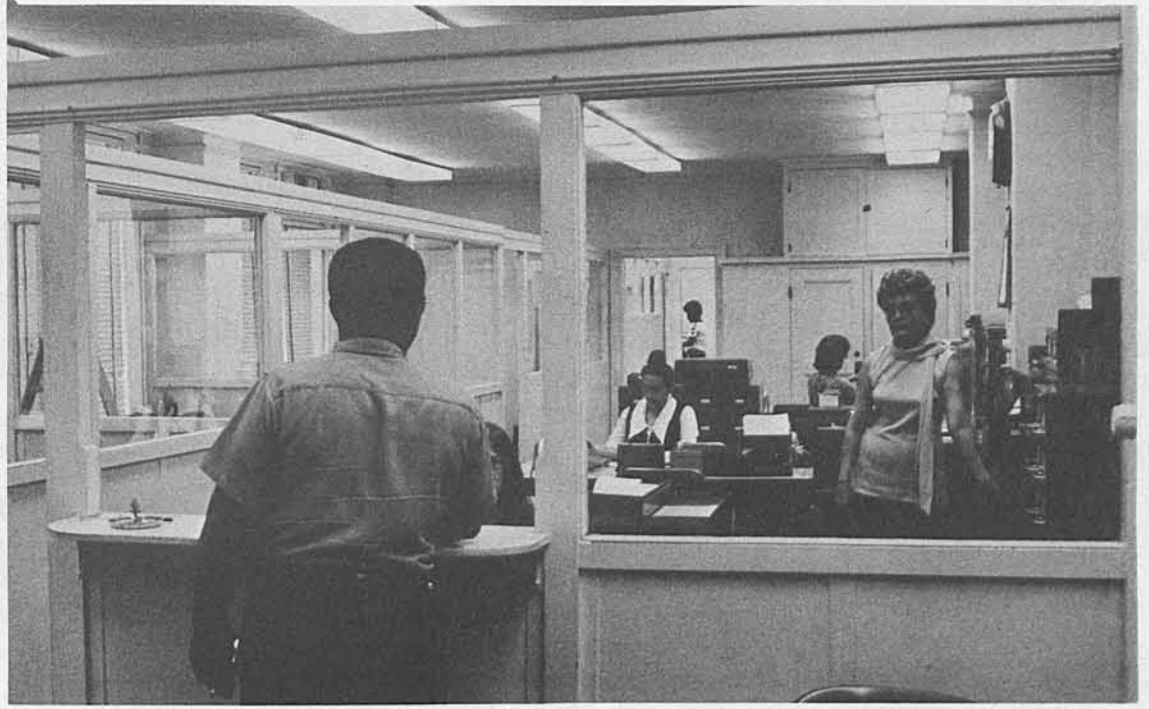
LACC HONORS RTD DRIVER—Robert L. Lane of Los Angeles (center) receives honors as top male student in the Transportation Department at Los Angeles City College. In the other half of his life, Lane is a bus driver with RTD, where he has maintained an excellent safety record. At left is John Tonkovich, chairman of LACC's Transportation Department. Presenting the citation is Louis F. Hilleary, director of instructions.



LOWER FARES FOR SENIORS—Noted senior citizens examine thousands of regional points of interest accessible on buses of the Southern California Rapid Transit District. A 10-cent bus fare—just reduced from 20 cents—is now available for senior citizens with identification cards. The fare is effective from 9 a.m. to 3 p.m. and 7 p.m. to midnight on weekdays, and from 5 a.m. to midnight on Saturday, Sunday and holidays. Marking the event in Pershing Square, downtown Los Angeles, are (from left) George Hamilton of the newly-formed Older American's Social Action Council; Larry Chrisco, president of Allied Senior Citizens Clubs of California and member of the County Commission on Aging; and RTD driver Alfonso Serrano.



John Wilkens, general superintendent of transportation, with responsibility for the Transportation and Personnel Departments, discusses personnel matter with Byron Lewis, director of personnel.



The personnel office is always open to help employees whether it be information about the District's fringe benefit programs and personnel policies, filling out insurance or other personal papers or simply to pick up a couple of discount tickets.

## Personnel Department

Training and Development . . . Non-Contract Performance Evaluation . . . Non-Contract Salary and Classification . . . Recruitment . . . Promotional Procedures . . . Student Internships . . . Emergency Employment Program . . . Centralized Personnel Records . . . Fringe Benefits (Pension, Insurance, Vacation, etc.) . . . Counseling



Mel Marquardt, deputy administrator for employee welfare programs, goes over employee file with his secretary Patricia Hannan, secretary II.



Rose Showers, salary process recorder, handles all District salary information.



Jean Unger, secretary III, is secretary to the General Superintendent of Transportation.



Muriel Small, secretary II, is secretary to the Director of Personnel.



Bill Chaney, acting employment supervisor, (left) goes over employment form with (left to right) Dennis Fillmore, clerk; Dorothy Langlois, interviewer; and Donna Hockenbury, interviewer.



Gloria Kutchai, personnel technician, checks over an emergency employment program report.



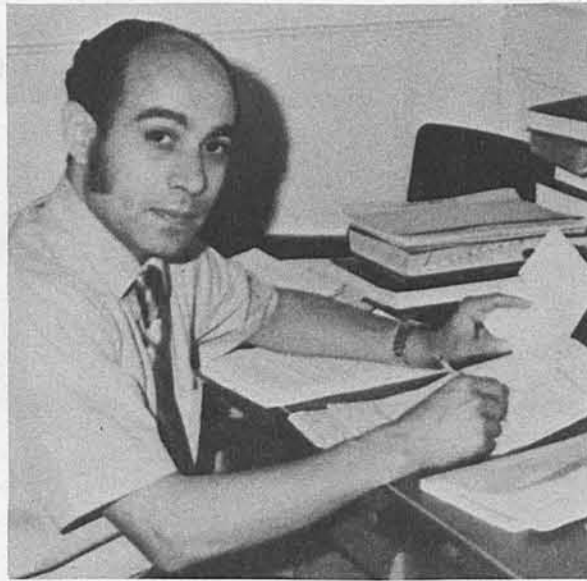
Elsie McIlwain, chief clerk, is in charge of personnel records and also helps employees with personal paper work.



Sherry Gray, typist clerk, handles credit information on employees, checking names, departments and employment



Bill Kendall, shown reviewing blood drive results, also handles employment insurance claims and special studies.



Mike Olivas, personnel analyst I, develops and coordinates various personnel programs, including non-contract classifications.



Palmira Nieves, clerk, (standing) checks records with Carrie Okimoto, employee welfare technician.

**Mini-bus** Continued from Page 1  
Monday through Saturday.

Sponsors of the program include the City, the County, the Community Redevelopment Agency and the Rapid Transit District.

**RETIREMENTS**

Climaxing many years of work in the field of public transportation, the following District employees recently retired:

**WALES R. ANDERSON**  
Operator  
Emp. 8-30-46/RETIRED: 6-4-72  
Years of Service: 25

**RICHARD BURKE**  
Operator  
Emp. 4-20-54/DISABILITY RETIREMENT: 6-1-72  
Years of Service: 18

**GERTRUDE CARTER**  
Ticket Office and Reports Clerk  
Emp. 8-19-28/RETIRED: 6-2-72  
Years of Service: 43

**RICHARD G. CORL**  
Operator  
Emp. 9-16-46/DISABILITY RETIREMENT: 6-3-72  
Years of Service: 25

**WILLIAM S. DENT**  
Operator  
Emp. 11-27-34/RETIRED: 6-3-72  
Years of Service: 37

**WILLIE H. GOINS**  
Utility "A"  
Emp. 3-23-46/RETIRED: 6-3-72  
Years of Service: 26

**ALBERT H. JONES**  
Utility "A"  
Emp. 11-28-45/RETIRED: 6-1-72  
Years of Service: 26

**WILLIAM H. LEMMERT**  
Operator  
Emp. 10-7-53/DISABILITY RETIREMENT: 6-3-72  
Years of Service: 18

**HELEN MCDOUGALL**  
Payroll Clerk  
Emp. 2-12-43/RETIRED: 6-10-72  
Years of Service: 29

**HARRY W. MCTAGGART**  
Foreman I  
Emp. 11-8-39/RETIRED: 6-1-72  
Years of Service: 32

**LEONARD F. MADER**  
Operator  
Emp. 7-20-60/RETIRED: 6-1-72  
Years of Service: 11

**DOUGLAS G. PHELPS**  
Mechanic "B"  
Emp. 11-26-45/RETIRED: 6-3-72  
Years of Service: 26

**MAX L. RISE**  
General Superintendent of Transportation  
Emp. 4-27-37/RETIRED: 6-4-72  
Years of Service: 35

**RUSSELL C. STEVENS**  
Operator  
Emp. 4-15-58/DISABILITY RETIREMENT: 6-3-72  
Years of Service: 14

**FRED L. THOMPSON**  
Mechanic "A"  
Emp. 9-11-36/DISABILITY RETIREMENT: 6-11-72  
Years of Service: 35

**RTD Directors**

- DR. NORMAN TOPPING, President
- THOMAS G. NEUSOM, Vice President
- Charles E. Compton
- A. J. Eyraud, Jr.
- Leonard S. Gleckman
- David K. Hayward
- Herbert H. Krauch
- Michael E. Macke
- Don. C. McMillan
- Douglas A. Newcomb
- Jay B. Price
- Virginia Rees, Secretary

Published by and for the employees of the Southern California Transit District.

- JACK R. GILSTRAP, General Manager
- GEORGE F. GOEHLER, Manager of Operations
- ROBERT R. SCHOLL, Director of Public Information
- WILLIAM A. REASON, Editor

**PROMOTIONS AND REASSIGNMENTS**

In recognition of their achievement and capabilities the following employees were recently reassigned.

**ARTHUR F. BEGG**  
Division Clerk to Division Clerk-Extra Relief Assistant Division Manager

**HOMER BLAIR**  
Operator to Operator-Extra Supervisor

**CARLOS CASTANEDA**  
Operator to Operator-Extra Supervisor

**DAVID L. CHAMNESS**  
Stock Clerk to Ticket Clerk

**ARNOLD CIACHETTI**  
Mechanic "B" to Electrician

**JOSE C. DELGADO**  
Laborer "A" to Road Janitor

**CLAYTON FLOURNOY**  
Operator to Operator-Extra Supervisor

**EMORY GREENE**  
Operator to Operator-Extra Supervisor

**THEODORE D. GREENE**  
Operator to Operator-Extra Supervisor

**MILDRED HENDERSON**  
Information Clerk to Temporary Addressograph Operator

**JERRY R. HERNANDEZ**  
Operator to Operator-Extra Supervisor

**LAWRENCE D. HOCOM**  
Information Clerk to Draftsman I

**ALBERT JOHNSON**  
Operator to Operator-Extra Supervisor

**HERMAN K. MARKWELL**  
Operator to Operator-Extra Supervisor

**RALPH RUIZ**  
Operator to Operator-Extra Schedule Checker

**ROOSEVELT WHITE**  
Operator to Operator-Extra Supervisor

**ROBERT P. WILLIAMS**  
Operator to Operator-Extra Supervisor



RETIREES HONORED—TOP LEFT: Gertrude "Odessa" Carter, ticket office and reports clerk, cuts a retirement cake honoring her 43 years with RTD. TOP RIGHT: Mary "Mae" Ryan, varitype operator, receives a retirement certificate signed by her friends from Art Issoglio. BOTTOM: Six Division 8 Operators were honored recently during special retirement ceremonies. Operators, left to right, are: John Brown, Walter Churchill, Charley Raven, Bob Melton, Sandy Gee and Wales Anderson.

**Give Blood**

**Discount Tickets**

Discount tickets are currently available in the District's Industrial Relations Office at 1060 S. Broadway on a first come first basis.

Information on the tickets can be obtained by calling 749-6977, ext. 269 or 288.

Regularly available are:

- KNOTTS BERRY FARM  
Buena Park
- DISNEYLAND 1971  
Anaheim
- MARINELAND  
Palos Verdes Estates
- MOVIELAND WAX MUSEUM
- PALACE OF LIVING ART  
Buena Park
- MAGIC MOUNTAIN  
Valencia
- LION COUNTRY SAFARI  
Irvine Ranch
- BUSCH GARDENS  
Van Nuys
- UNIVERSAL STUDIOS  
Hollywood

**GOODWILL AMBASSADOR**—Oliver A. (Carlos) Ortega of Venice (right) has been selected RTD's June "Operator of the Month." Now in his 27th year of public transit service, Ortega's reputation for courtesy to his passengers is matched only by his outstanding safety record. He is known in his own community as a popular operatic tenor. Presenting a certificate of merit to the courtesy honoree is David Hayward, Redondo Beach city councilman, who represents Central and Southwest corridor cities as a member of the RTD Board of Directors.



**Southern California Rapid Transit District**  
1060 South Broadway, Los Angeles 90015

U. S. POSTAGE  
**paid**  
BULK RATE  
Los Angeles, Calif.  
Permit No. 28201