

# SOUTHERN CALIFORNIA RAPID TRANSIT DISTRICT

## SPECIAL

### Avid Sports Fan Travels RTD To All Local Games

The 4:40 p.m. bus pulls into the RTD bus terminal at Bailey and Comstock Streets in Whittier. A white-haired man grabs his two newspapers, his transistor radio and a small bag of peanuts.

"I come here a lot, yes I do," says Louis Hammerton, a 63-year old retired railroad worker who is well known at local sports events as Laker Louie, Ram Louie and Dodger Louie. Hammerton might also be appropriately known as RTD Louie as well.

Buses are as important to Louis as are his beloved Lakers, Rams and Dodgers. Without the buses he couldn't get to the games. He has never driven a car—buses are his only means of transportation. "Only two or three times," he says, "has anyone offered me a ride."  
"Weekdays, I take the 4:40 afternoon bus, transfer to the No. 5 downtown and get there at 6:30," he says. For Sunday games, (one hour earlier), he leaves Whittier at 4:05. Homeward-bound, it take Louis 10 minutes to walk to Manchester and Market for his No. 5 bus to Sixth and Broadway and eventually, the 11:51 to Whittier."

How many people would use eight hours to enjoy an average of 1½ hours entertainment at a Laker basketball game?

"This is all I've got," Hammerton says. "I've always loved sports and I've got something to do year-round. Basketball is my favorite, by far. You can't beat the Lakers."

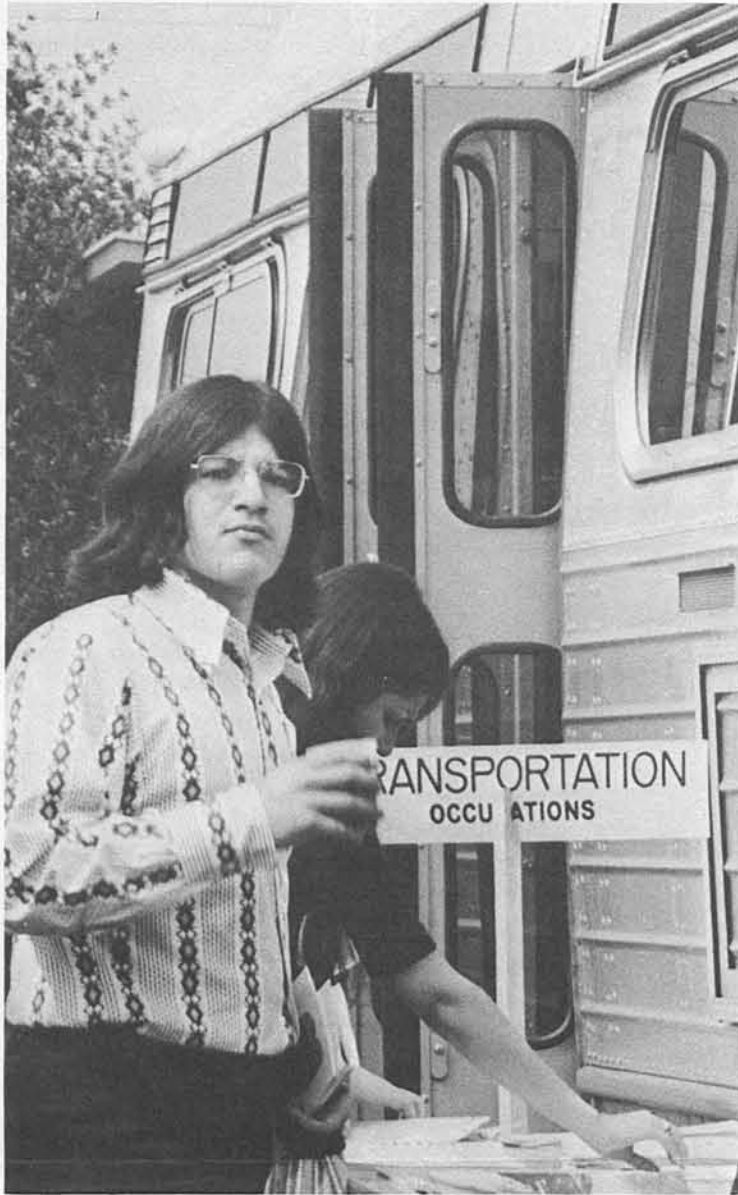
"I spend a lot of time riding buses," he reflects. "But I don't mind. I have time to go over the statistics from the game I've just watched. The sports reporters give me lots of information sheets they use during the game and I go over them while riding home."

"I've been coming to these games for a long time," Hammerton added. "I've followed the Lakers ever since we got them from Minneapolis." He has attended almost every Rams game for 20-odd years and Dodger games since 1958.

His favorites among the players are Jerry West, Sandy Koufax, Don Sutton and Bill Sharman. "I saw Sandy Koufax's perfect game, Bill Singer's no hitter, Jerry West's 60-foot shot two years ago in the playoffs, everything."

Hammerton is something of

Continued on Page 4



A CAREER IN PUBLIC TRANSPORTATION — Many students, interested in the field of public transportation availed themselves of District information pamphlets and brochures. Many students like the one at left were interested in the operator requirements for RTD.

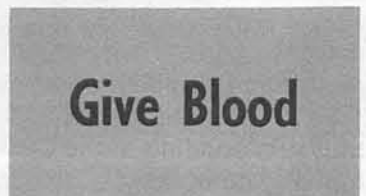
### Division II First In "Drive With Pride" Contest

Division 11 topped the District's "Drive With Pride" contest for the month of January with Division 4 second and Division 3 third. The January presentations brought to a close the 1971 contest.

Division 11 was first with a 46.4% reduction in accidents with Division 4 a strong second at 37.8% and Division 3 third with 34.5%.

Presentation ceremonies were hosted by Johnnie Johnston, assistant general superintendent of transportation. Johnston discussed current projects underway in the District and held an impromptu question and answer period.

Permanent retention of the trophies is presently being computed and the winners will be announced soon by Max L. Rise, general superintendent of transportation.



Give Blood

## RTD Participates In San Fernando High's Career Week March 13

A 7100 Class bus went to school recently.

March 13 one of RTD's 7100 Class buses took part in San Fernando High School's Career Week—a week during which students focused attention on selecting a career.

Many top companies and agencies in the L.A. area participated in the activities, companies such as Prudential Insurance Co., Prockedyne, L.A. Police Dept., U.S. Army, Navy and Marine Corps., L.A. City Fire Dept., L.A. Recreation & Parks, Carnation Co., Transworld Airlines, U.S. Forest Service, and many more.

RTD's Transportation Department provided the bus for the occasion and the Public Information Department supplied pamphlets, brochures, busway renderings, and the most popular give-away advertising item—the miniature cardboard replica of a Mini-bus. At the end of the two hour opening

day activity, almost every student on campus had a Mini-bus replica in his or her hand.

Notwithstanding the fact that RTD shared the school mall with at least 15 other companies displaying equipment, RTD's prime workhorse, the 51-passenger ExtraCar, drew the bulk of the 2,000 or so participants at the Career Week Activities.

Continued on Page 4

### Division 18 & 20 Lines Reassigned

"For some time now RTD employees have known that Division 18 and 20 were going to be discontinued," reports George Goehler manager of operations.

"On April 9, Division 18 Lines 31, 71, 107, 109, 110 and 119 will be reassigned to Division 10. On that same day Division 20 Lines 140, 141 and 142 will be moved to Division 2.

## RTD Operator Says It With Candy In Farewell To His "Regulars"



Arthur Freas and his wife Winifred relax at home and look over the many retirement cards received from passengers and friends. Meow, the family pet, thinks retirements great too.

Passengers on RTD's Line 13 found themselves the unexpected recipient of one pound gift boxes of candy March 14.

It was veteran Operator Arthur Freas' way of saying goodbye on his retirement day.

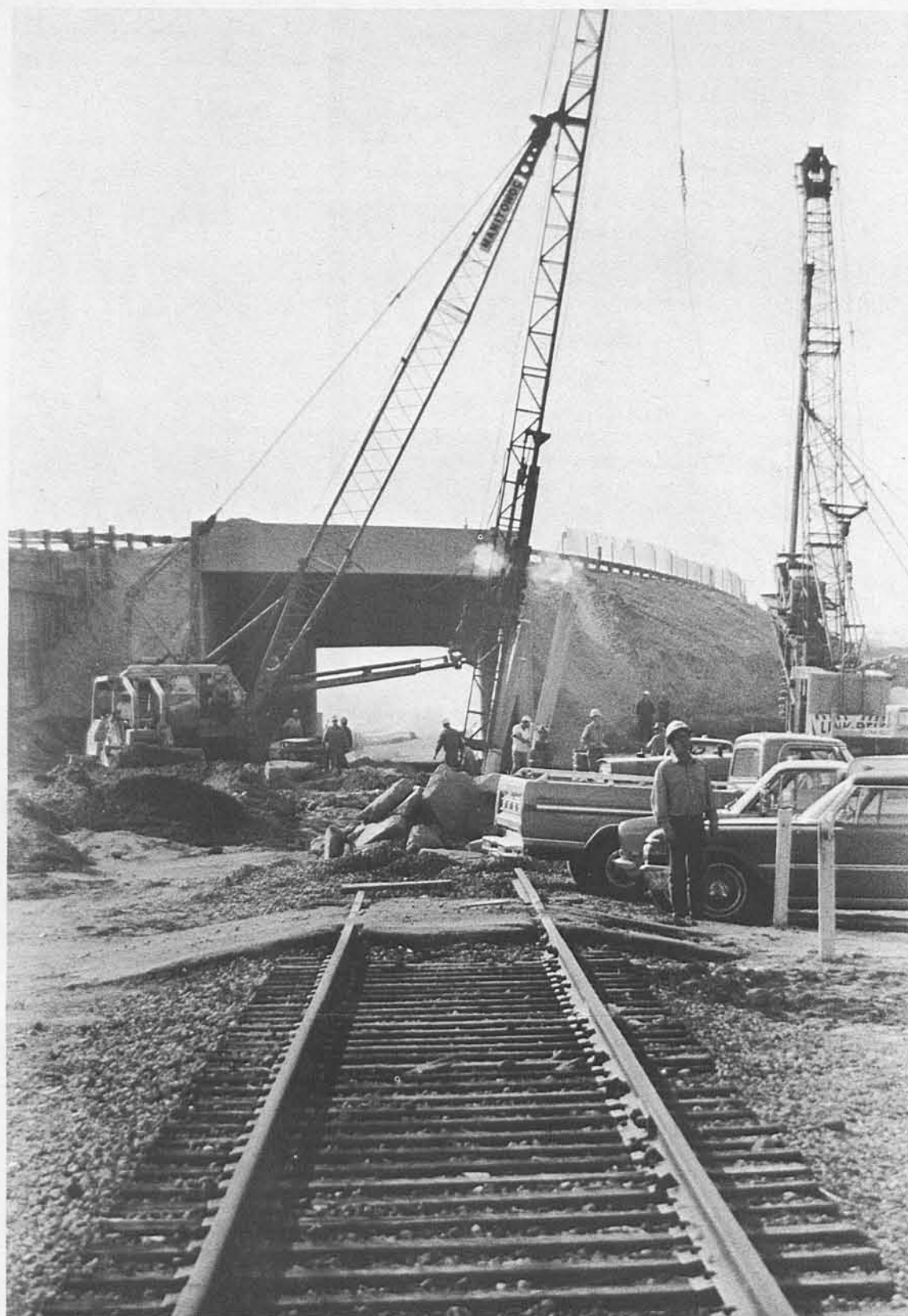
Freas, who has been operating Los Angeles area public transit vehicles for 42 years, distributed nearly 100 boxes of candy to his Culver City area commuters.

"I've been working this line since 1945," reflected Freas, "and my passengers have been wonderful. I didn't want to leave without showing my appreciation and let them know I'll really miss 'em."

The passengers likewise showed their appreciation, flooding Freas with cards and gifts. A blue tie, (its donor said it could be returned if it didn't fit), a bottle of bubbly, a couple bottles of snake bit remedy, a bank, and some "treasury etchings."



## Construction Of El Monte-Los Angeles Busway Rapidly Moving Forward



**BUSWAY CONSTRUCTION MOVES RIGHT ALONG** — RTD's El Monte-Los Angeles Busway is right on schedule according to RTD's Chief Engineer Richard Gallagher. Site above shows the underpass under the San Bernardino Freeway at El Monte. State contractors for the busway are Dan Peterson and Rados Constructors who are working on the busway from the Alhambra Wash to the Gibson overhead, and Strecker who is doing the lane work from the Long Beach Freeway to the Alhambra wash. "With everything moving on schedule," added Gallagher, "we will most assuredly maintain our October operation schedule for the first 7.2 miles of the busway. Contracts for the construction of the Busway Stations will be let out for bid later in the year. As you look at the photos above you are looking from the area that will later become Division 9's yard.

## SCHEDULE AFFECTING EVENTS

*Saturday, March 11, 1972 to Saturday May 13, 1972, Inclusive*

The Southern California Harness Racing Association will conduct Night Harness Racing at Los Alamitos. Race schedules will be operated Monday through Saturday. Post Time will be 7:45 p.m. on all nights.

There will be racing on Good Friday, March 31, 1972.

*Saturday, April 1, 1972*

Baweball—Exhibition Game at Anaheim Stadium, Angels vs Dodgers.

*Sunday, April 2, 1972*

Baseball—Exhibition Game at Dodger Stadium, Dodgers vs Angels.

*Sunday, April 2, 1972*

Easter Sunday—Extra service will be operated to Hollywood Bowl for Easter Sunrise Service.

*Friday, April 7, 1972*

Baseball—National League opening game at Dodger Stadium, Dodgers vs Cincinnati.

*Saturday, April 8, 1972*

Last day of racing at Santa Anita.

*Sunday, April 9, 1972*

System Shake-Up will become effective.

*Wednesday, April 12 to Monday, July 24, 1972, Inclusive*  
Thoroughbred Racing at Hollywood Park. Race schedules will be operated Tuesday through Saturday with the following exceptions. There will be racing on Memorial Day, Monday, May 29 and no racing on Tuesday, May 30, 1972.

*Friday, April 14, 1972*

Baseball—American League opening game at Anaheim Stadium. Angels vs Texas Rangers (formerly Washington Senators).

*Sunday, April 30, 1972*

Daylight Savings Time becomes effective. Schedule Letters will be issued for those lines which provide Owl Service.

*Thursday, May 11, 1972*

Parochial School Holiday—Ascension Thursday, School Day Schedules will be operated except as noted by Schedule Letters.

*Saturday, May 13, 1972*

Last night of Harness Racing at Los Alamitos.

*Monday, May 29, 1972*

Memorial Day—Legal Holiday. Sunday schedules will be operated on all lines with the following exceptions:

- A. Line 5—Special Race Schedule No. 72047.
- B. Line 31—Legal Holiday Schedule No. 72025.
- C. Line 54—Legal Holiday Schedule No. 68014.
- D. Line 57-54—Special Race Schedule No. 72053.
- E. Line 57-“21”—Special Race Schedule No. 72050.
- F. Line 57-“60”—Special Race Schedule No. 72056.
- G. Line 57-“85”—Special Race Schedule No. 72059.
- H. No service operated on this date on Lines 105, 107, 108, 109 or 110.

There will be thoroughbred Racing at Hollywood Park.

*Tuesday, May 30, 1972*

There will be no racing at Hollywood Park. Non-Race schedules will be operated.

*Friday, June 9, 1972*

Last Day of School for most Parochial Schools.

*Thursday, June 15, 1972*

Last Day of School for Pasadena and Riverside Unified School Districts.

## What's Happening At The California Museum Of Science And Industry

**FREDERICK DOUGLASS YEARS**—The life and times of Frederick Douglass, who fled the bonds of slavery and aided the Abolitionist movement by publishing the "Frederick Douglass Paper" which became the "North Star," are described in four chronological areas. Exhibition subjects include background information on slavery, the Civil War, the new life of the Negro after generations of slavery and his struggle in finding a life of freedom. On display to April 9.

**"VIENNA GLORIOSA" AND "CREATIVE AUSTRIA"**—Austria, the home of more than half the world's master composers, the cross roads of Central Europe and a warm and vital center for the arts and sciences, could never be fully described in one, or even two exhibits. However, "Vienna Gloriosa" and "Creative Austria," two separate but complementary exhibits, are combined to form a vivid portrait of the essence of that country, contrasting the colorful past with the productive, technically modern Austria of today. Presented in cooperation with the Austrian Trade Delegate, the exhibits occupy the entire Space Museum building of the California Museum of Science and Industry complex. On display to April 23.





Joe Lara, Mechanic "A", removes rear axle shaft nuts. Axle must be pulled to remove rear wheels.



Ed Kennet, Mechanic "A", makes final brake inspection and adjustment before 7049 is given a road test. When 7049 passes its brake test it'll go back to its division.



Joe Curtis, Mechanic "B", removes rear brake shoes.

### Brake Shop

All major brake repair work on RTD vehicles is done at the District's South Park Shops, 5413 Avalon in South Los Angeles.

Tommy Rocha, a veteran of 49 years, is the brake shop leadman under the supervision of Gus Gunderson. With a crew of 22 men—average seniority is 19½ years per man—the shop turns out an average

of eight to ten brake repair jobs each working day.

At least 14 buses are in various stages of reline at any given time. When a bus arrives at South Park for a brake job, all parts affected are steam cleaned first. A repair estimate is made by Rocha and work gets underway. In some cases a bus can come in at 7:00 a.m. and go out that same day.



Tommy Rocha, brake shop leadman, watches Mathew Harris, Mechanic "A", change brake shoes.



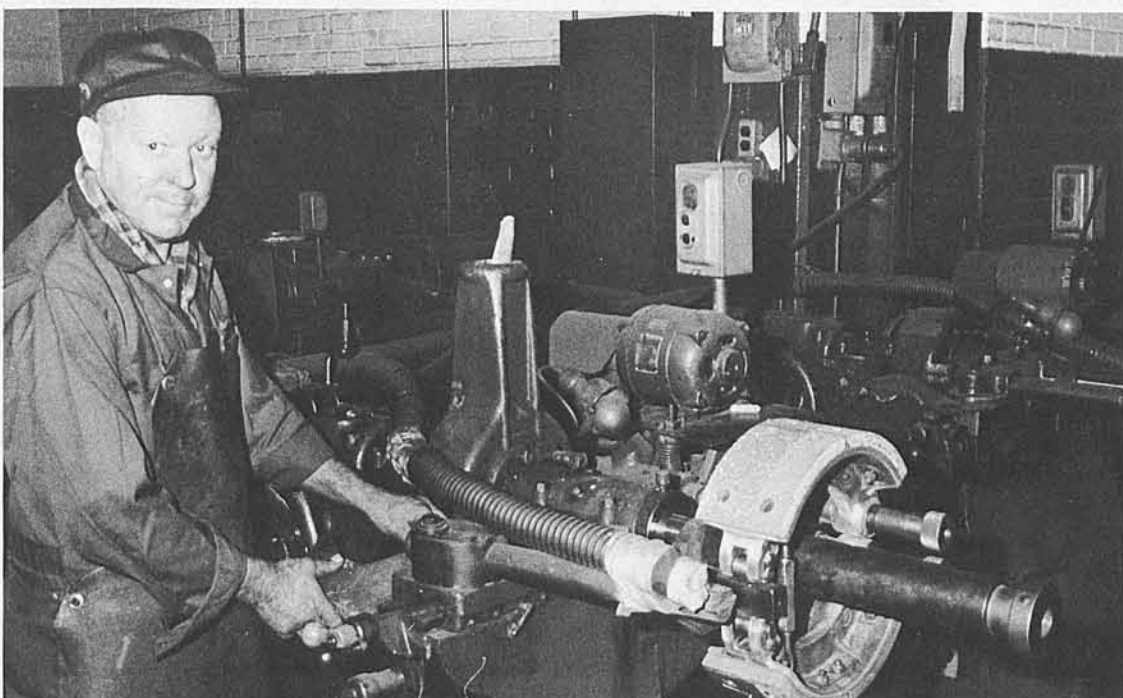
Bobby Bray, Mechanic "B", installs new brake shoes on rear axle.



LeRoy Brown, Mechanic "A", replaces defective grease fitting on front brake assembly.



After new brake shoes have been installed, Harold Mouton, Mechanic "A", puts rear wheels back on.



Jim Davis, Mechanic "A", trims front brake shoe blocks on drum lathe at South Park.



Everett Hunter, Mechanic "A", turns rear brake drum.



**PROMOTIONS AND REASSIGNMENTS**

In recognition of their achievement and capabilities the following employees were recently reassigned.

- MICHAEL E. BEALS**  
Operator to Operator-Extra Schedule Checker
- WINNIFRED L. DAVIS**  
Secretary II to Secretary III
- MAUREEN F. ESQUIROZ**  
Division Stenographer to Schedule Typist
- BOB L. FALVEY**  
Equipment Foreman I to Equipment Foreman II
- BYRAN E. FORREST**  
Mechanic "B" to Mechanic "A"
- JAMES GATEWOOD**  
Mechanic "C" to Mechanic "B"
- DIANE A. KRAFT**  
Division Stenographer (Vacation Relief) to Division Stenographer
- ELMER C. MARKLES**  
Schedule Analyst II to Assistant Transportation Planner
- CAROL A. MILLS**  
Cash Clerk to Information Clerk
- MONNIE MOORE**  
Schedule Checker to Temporary Schedule Maker
- EARL R. MOREY**  
Mechanic "AA" to Equipment Foreman I
- WILLIAM MYLES, JR.**  
Janitor to Utility "A"
- PALMIRA NIEVES**  
Typist-Clerk-EEA TO Pension and Insurance Clerk
- CAROLEE-ANN C. OKIMOTO**  
Pension and Insurance Clerk to Employee Welfare Technician
- PATRICIA L. POTTER**  
Information Clerk to Cash Clerk

**RETIREMENTS**

Climaxing many years of work in the field of public transportation, the following District employees recently retired:

- HARRY W. BLUNDELL**  
Operator  
Emp: 8-16-57/RETIRED: 2-25-72  
Years of Service: 14
- BASIL BOLTON**  
Ticket Clerk  
Emp: 2-24-53/RETIRED: 2-2-72  
Years of Service: 19
- JAMES C. BOSWELL**  
Operator  
Emp: 9-18-57/RETIRED: 3-8-72  
Years of Service: 14

**RTD Directors**

- DR. NORMAN TOPPING,  
President
- THOMAS G. NEUSOM,  
Vice President
- Charles E. Compton
- A. J. Eyraud, Jr.
- Leonard S. Gleckman
- David K. Hayward
- Herbert H. Krauch
- Michael E. Macke
- Don. C. McMillan
- Douglas A. Newcomb
- Jay B. Price
- Virginia Rees, Secretary

Published by and for the employees of the Southern California Transit District.

- JACK R. GILSTRAP  
General Manager
- GEORGE F. GOEHLER  
Manager of Operations
- ROBERT R. SCHOLL  
Director of Public Information
- WILLIAM A. REASON  
Editor

- CARLTON CHRISTENSEN**  
Operator  
Emp: 11-4-53/RETIRED: 3-3-72  
Years of Service: 18
- ARTHUR W. FREAS**  
Operator  
Emp: 8-23-29/RETIRED: 3-14-72  
Years of Service: 42
- ELMER E. HOOVER**  
Operator  
Emp: 4-16-46/RETIRED: 1-30-72  
Years of Service: 25
- JOHN L. JACKSON**  
Operator  
Emp: 4-2-46/RETIRED: 2-2-72  
Years of Service: 25
- ALBERT E. MCGOWN**  
Supervisor  
Emp: 10-9-33/RETIRED: 2-12-72  
Years of Service: 38
- PAUL MILINKOVICH**  
Schedule Checker  
Emp: 10-28-46/RETIRED: 2-9-72  
Years of Service: 25
- CHARLES J. MORRISSEY**  
Operator  
Emp: 2-10-36/RETIRED: 2-2-72  
Years of Service: 36
- CHARLES A. RAVENS**  
Operator  
Emp: 1-24-47/RETIRED: 2-13-72  
Years of Service: 25
- AMADOR M. RODRIGUEZ**  
Operator  
Emp: 2-8-61/RETIRED: 3-10-72  
Years of Service: 11
- ROBERT W. STEEDMAN**  
Operator  
Emp: 6-15-34/RETIRED: 3-6-72  
Years of Service: 37
- MURRAY SVONKIN**  
Operator  
Emp: 4-5-60/RETIRED: 1-31-72  
Years of Service: 11
- CURTIS P. TRIBBLE**  
Information Clerk  
Emp: 2-13-63/RETIRED: 2-12-72  
Years of Service: 9
- MARSHALL E. VACHER**  
Operator  
Emp: 9-9-41/RETIRED: 3-1-72  
Years of Service: 30
- DAVID S. VARELA**  
Operator  
Emp: 3-14-44/RETIRED: 3-8-72  
Years of Service: 28
- FREDERICK R. WHITE**  
Operator  
Emp: 8-20-45/RETIRED: 3-1-72  
Years of Service: 26
- HUBERT C. WOODIE**  
Operator  
Emp: 4-23-43/RETIRED: 3-3-72  
Years of Service: 28
- MORRIS S. ZEID**  
Trafficman  
Emp: 2-12-47/RETIRED: 3-2-72  
Years of Service: 25

**VITAL STATISTICS**

In memorium to employees who have devoted much of their lifetime in a profession designed to move people.

- FRED R. BROWN**  
Flagman  
3-1-72/Retired: 4-1-64  
Years of Service: 35
- ERNEST L. DENSON**  
Operator  
1-29-72/  
Years of Service: 2

**Discount Tickets**

Discount tickets are currently available in the District's Industrial Relations Office at 1060 S. Broadway on a first come first basis.

Information on the tickets can be obtained by calling 749-6977, ext. 269 or 288.

- Regularly available are:
- KNOTTS BERRY FARM**  
Buena Park
  - DISNEYLAND 1972**  
Anaheim
  - MARINELAND**  
Palos Verdes Estates
  - MOVIELAND WAX MUSEUM**
  - PALACE OF LIVING ART**  
Buena Park
  - MAGIC MOUNTAIN**  
Valencia



Busway renderings proved a point of interest to San Fernando High School students as they toured one of RTD's newest buses during Career Week.



Nearly 2,000 students went through the District's 7100 Class bus at San Fernando High School's mall during Career Week.

**RTD Participates Sports Fan**

*Continued from Page 1*  
Aboard the ExtraCar, students asked District representatives Bill Chaney and Michael A. Olivas about job opportunities with the District. Both men stressed the importance of advanced education and training to meet the challenge of the highly technical era that RTD is entering, especially in relation to the proposed Rapid Transit System for L.A. County.

**RAYMOND M. KELLY**  
Flagman  
2-26-72/RETIRED: 4-1-63  
Years of Service: 29

**EDWARD L. MOORE**  
Mechanic "A"  
2-9-72/RETIRED: 12-1-71  
Years of Service: 30

*Continued from Page 1*  
a legend in Whittier. He is a regular at high school, junior college and college games.

He was born in Downey and has lived in the same house now for 52 years.

Hammerton follows each of "his" teams both at home and on the road. His spare time is spent listening to light opera on the radio and watching television.

He has a 20-year collection

**COLLIS HOLLADAY**  
Treasurer  
1-7-72/RETIRED: 3-16-47  
Years of Service: 14

**DOROTHY L. KALDE**  
Service Inspector  
1-28-72/RETIRED: 3-1-63  
Years of Service: 20

of scorecards, programs, newspapers and whatever.

Hammerton is active in church work and supporter of the Fellowship of Christian Athletes.

Young in heart this 63-year old man can spout statistics on the Lakers, Rams and Dodgers with the experts. He has boxes and boxes of information about each team.

The hours may be long, but he doesn't mind. To be on hand for the game is everything—the trip is well worth it to Louis.

**Give Blood**

U. S. POSTAGE  
paid  
BULK RATE  
Los Angeles, Calif.  
Permit No. 28201

**Southern California Rapid Transit District**  
1060 South Broadway, Los Angeles 90015